

# V&V Reference Report

## L2 ASCDS Version : 7.6.7.1

Observation 59615 - L2 Version 002  
Chandra X-Ray Center

L2 Processing Date : Mar 10 2006

## Contents

<b>1</b>	<b>Front</b>	<b>2</b>
<b>2</b>	<b>OBI</b>	<b>3</b>
2.1	OBI . . . . .	3
2.1.1	Images . . . . .	3
2.1.2	Bias . . . . .	3
2.1.3	Parameters . . . . .	4
2.1.4	Events . . . . .	4
2.2	Compared Parameters . . . . .	5
2.3	Aspect . . . . .	6
2.4	Star Slots . . . . .	8
2.5	FID Slots . . . . .	8
<b>A</b>	<b>Summary</b>	<b>9</b>
A.1	Status . . . . .	9
A.2	Comments . . . . .	9

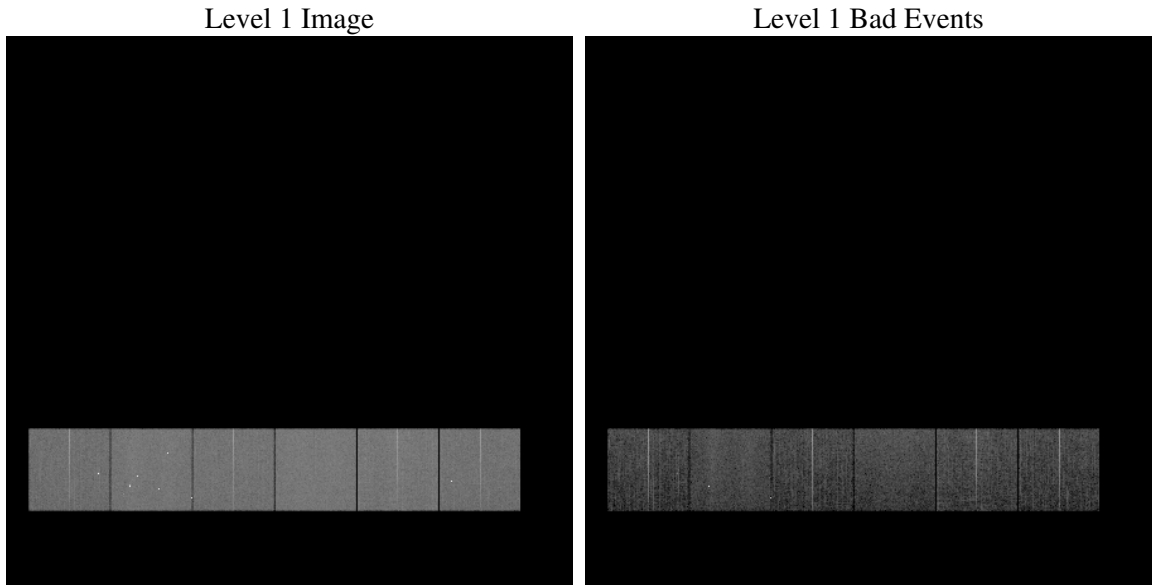
# 1 Front

seq_num	&#160
obs_id	59615
title	ACIS-456789 diagnostics
observer	CHANDRA engineering request/realtime commanding
object	&#160
dtcycle	0
cycle	P
ra_targ	0.0
dec_targ	0.0
ra_nom	237.00634471826
dec_nom	-16.028049792485
roll_nom	249.21971820227
revision	2
ontime	8281.5999691486
livetime	8176.7333637585
ontime4	7054.8468489647
ontime5	8281.5999691486
ontime6	7560.3981945515
ontime7	8281.5999691486
ontime8	7827.8633671403
ontime9	7424.154022783
l2events	1041659

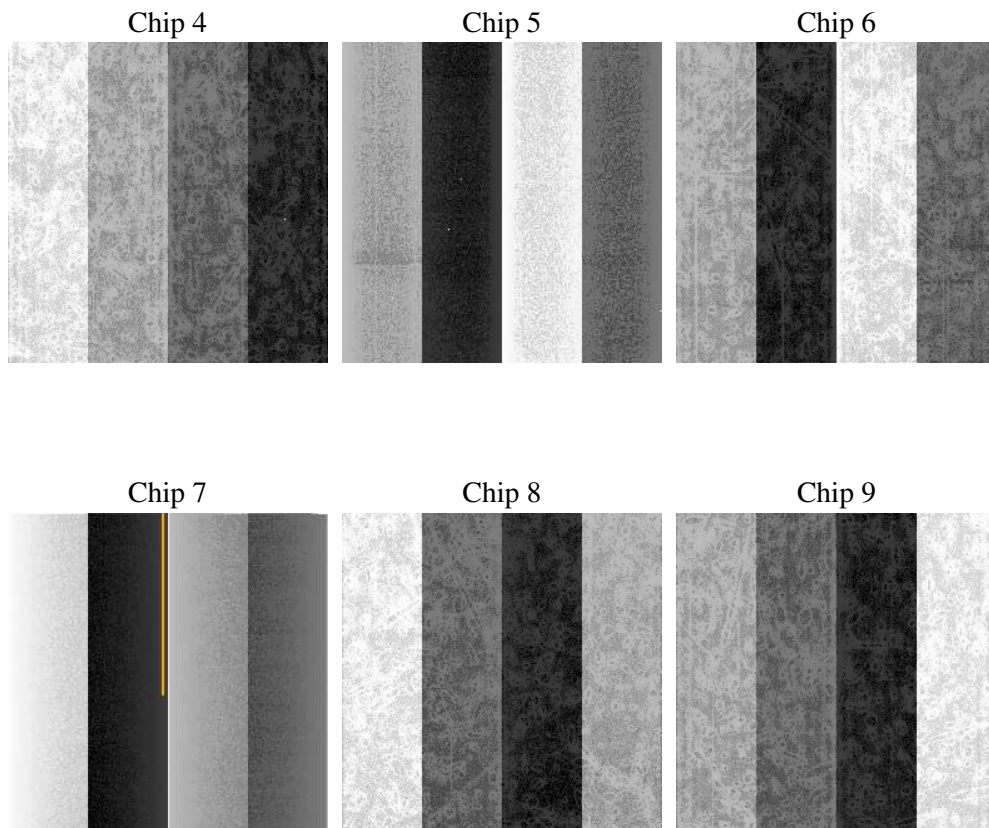
## 2 OBI

### 2.1 OBI

#### 2.1.1 Images



#### 2.1.2 Bias



### 2.1.3 Parameters

obi_num	0
ascdsver	7.6.7.1
caldbver	3.2.1
date	2006-03-10T19:52:44
revision	2

sched_exp_time	0.0
ontime	8284.0141978264
ontime4	7055.6841253936
ontime5	8284.0141978264
ontime6	7561.2765109837
ontime7	8284.0141978264
ontime8	7830.277595818
ontime9	7425.1554592252
l1events	1489290

### 2.1.4 Events

	ccd 4	ccd 5	ccd 6	ccd 7	ccd 8	ccd 9
level 1 events	217895	266269	240990	269395	262641	232100
rejected events	57631	69350	58015	62635	65408	56491
rejected %	26%	26%	24%	23%	24%	24%

	ccd 4	ccd 5	ccd 6	ccd 7	ccd 8	ccd 9
grade 0 events	95158	21670	97600	31407	106711	98289
	43%	8%	40%	11%	40%	42%
grade 1 events	716	237	436	99	550	542
	0%	0%	0%	0%	0%	0%
grade 2 events	23580	88133	33129	64790	35280	29083
	10%	33%	13%	24%	13%	12%
grade 3 events	10767	5358	11105	13562	12672	11021
	4%	2%	4%	5%	4%	4%
grade 4 events	10489	5691	11156	13243	12796	11059
	4%	2%	4%	4%	4%	4%
grade 5 events	3174	6853	3473	6837	4398	3618
	1%	2%	1%	2%	1%	1%
grade 6 events	20270	76067	29985	83758	29774	26157
	9%	28%	12%	31%	11%	11%
grade 7 events	53741	62260	54106	55699	60460	52331
	24%	23%	22%	20%	23%	22%

## 2.2 Compared Parameters

Parameter	Planned	Actual	Parameter	Planned	Actual
Instrument	ACIS	ACIS	Obspar format version number	6	6
Detector	ACIS-456789	ACIS-456789	Obspar file type	PREDICTED	ACTUAL
Grating	NONE	NONE	Obspar update status	NONE	UPDATED
Data mode	FAINT	FAINT	On-chip summing requested	N	N
Observation mode	SECONDARY	SECONDARY	Subarray requested	NONE	NONE
Pointing RA	0	237.0063447182586	Alternating exposures requested	N	N
Pointing Dec	0	-16.02804979248548	Primary exposure time	3.2	3.2
Pointing Roll	0.0	249.2197182022679			
SIM focus pos (mm)	-0.684267	-0.7809083437167272			
SIM defocus (mm)	0	0.7524282956875696			
SIM translation stage pos (mm)	-190.132523	250.466033080201			
SIM translation stage offset (mm)	0	-0.01005468664627074			
Observation start time	235120062.13105	235120061.10605			
Observation start date	2005-06-14T07:07:42	2005-06-14T07:07:41			
Observation end time	235143651.482127	235143650.45712			
Observation end date	2005-06-14T13:40:51	2005-06-14T13:40:50			
Read mode	TIMED	TIMED			

## 2.3 Aspect



**2.4 Star Slots**

**2.5 FID Slots**

# A Summary

## A.1 Status

V&V Scientist	Jen Lauer
V&V Date (YYYY-MM-DD)	2006.03.10
V&V Edition	1
V&V Disposition and Status	OK
V&V Charge Time	8.28159996

## A.2 Comments

The ACIS focal plane temperature was above the calibration limits for the entire length of the observation.