

# V&V Reference Report

## L2 ASCDS Version : 7.6.7

Observation 59655 - L2 Version 002  
Chandra X-Ray Center

L2 Processing Date: Mar 4 2006

## Contents

<b>1</b>	<b>Front</b>	<b>2</b>
<b>2</b>	<b>OBI</b>	<b>3</b>
2.1	OBI . . . . .	3
2.1.1	Images . . . . .	3
2.1.2	Bias . . . . .	3
2.1.3	Parameters . . . . .	4
2.1.4	Events . . . . .	4
2.2	Compared Parameters . . . . .	5
2.3	Aspect . . . . .	6
2.4	Star Slots . . . . .	8
2.5	FID Slots . . . . .	8
<b>A</b>	<b>Summary</b>	<b>9</b>
A.1	Status . . . . .	9
A.2	Comments . . . . .	9

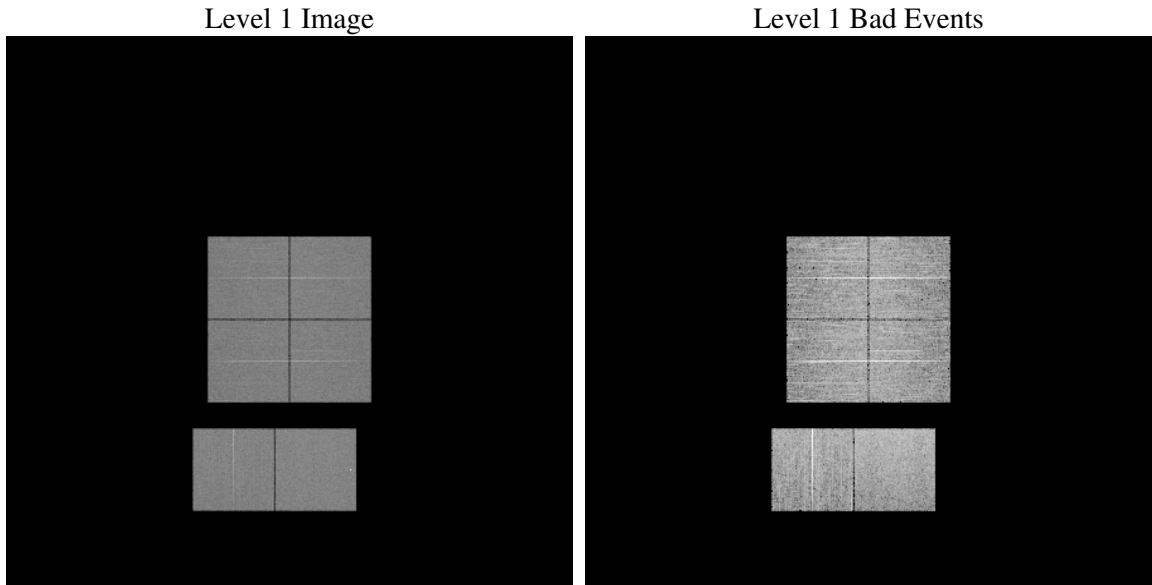
# 1 Front

seq_num	&#160
obs_id	59655
title	ACIS-012367 diagnostics
observer	CHANDRA engineering request/realtime commanding
object	&#160
dtcycle	0
cycle	P
ra_targ	0.0
dec_targ	0.0
ra_nom	230.03747233594
dec_nom	-44.290073676299
roll_nom	347.47844634156
revision	2
ontime	8092.799969852
livetime	7990.3240637346
ontime0	7758.9791895449
ontime1	7914.5461933911
ontime2	7434.8812005222
ontime3	7639.062918961
ontime6	7940.4740158617
ontime7	8092.799969852
l2events	1085621

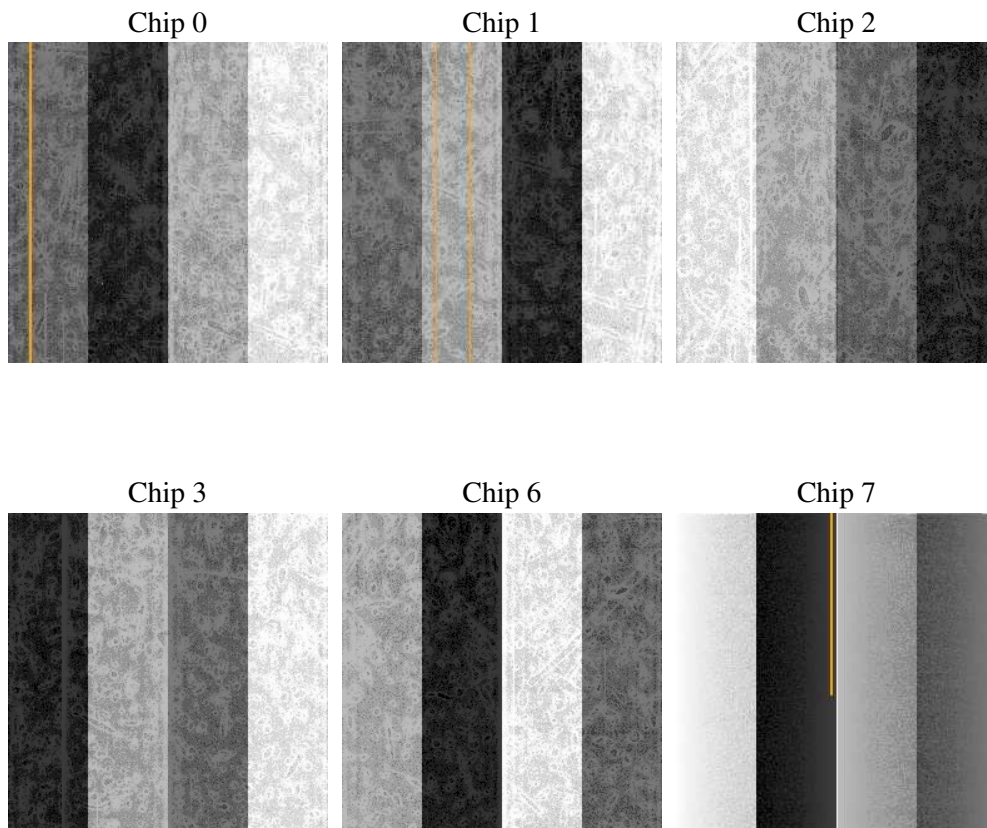
## 2 OBI

### 2.1 OBI

#### 2.1.1 Images



#### 2.1.2 Bias



### 2.1.3 Parameters

obi_num	1
ascdsver	7.6.7
caldbver	3.2.1
date	2006-03-04T07:03:56
revision	2

sched_exp_time	0.0
ontime	8102.5195690095
ontime0	7768.6987887025
ontime1	7924.2657925487
ontime2	7444.6007996798
ontime3	7648.7825181186
ontime6	7950.1936150193
ontime7	8102.5195690095
l1events	1456399

### 2.1.4 Events

	ccd 0	ccd 1	ccd 2	ccd 3	ccd 6	ccd 7
level 1 events	234095	240569	230812	234945	252346	263632
rejected events	49493	50714	51085	50566	54548	56123
rejected %	21%	21%	22%	21%	21%	21%

	ccd 0	ccd 1	ccd 2	ccd 3	ccd 6	ccd 7
grade 0 events	101633	103767	101110	103528	107228	34640
	43%	43%	43%	44%	42%	13%
grade 1 events	525	490	593	624	518	106
	0%	0%	0%	0%	0%	0%
grade 2 events	32384	34341	30054	31409	34072	63827
	13%	14%	13%	13%	13%	24%
grade 3 events	11980	11970	11665	12157	12358	13945
	5%	4%	5%	5%	4%	5%
grade 4 events	11996	12151	11664	11963	12268	13757
	5%	5%	5%	5%	4%	5%
grade 5 events	3126	3168	2889	3179	3416	6340
	1%	1%	1%	1%	1%	2%
grade 6 events	26842	27852	25487	25570	32098	81584
	11%	11%	11%	10%	12%	30%
grade 7 events	45609	46830	47350	46515	50388	49433
	19%	19%	20%	19%	19%	18%

## 2.2 Compared Parameters

Parameter	Planned	Actual	Parameter	Planned	Actual
Instrument	ACIS	ACIS	Obspar format version number	6	6
Detector	ACIS-012367	ACIS-012367	Obspar file type	PREDICTED	ACTUAL
Grating	NONE	NONE	Obspar update status	NONE	UPDATED
Data mode	FAINT	FAINT	On-chip summing requested	N	N
Observation mode	SECONDARY	SECONDARY	Subarray requested	NONE	NONE
Pointing RA	0	230.0374723359372	Alternating exposures requested	N	N
Pointing Dec	0	-44.29007367629906	Primary exposure time	3.2	3.2
Pointing Roll	0.0	347.4784463415566			
SIM focus pos (mm)	-0.782348	-0.6828225247311905			
SIM defocus (mm)	0	0.8505141146731063			
SIM translation stage pos (mm)	-233.592463	250.466033080201			
SIM translation stage offset (mm)	0	-0.01005468664627074			
Observation start time	232832214.87667	232832213.8517			
Observation start date	2005-05-18T19:36:55	2005-05-18T19:36:53			
Observation end time	232855090.82771	232855089.80274			
Observation end date	2005-05-19T01:58:11	2005-05-19T01:58:09			
Read mode	TIMED	TIMED			

## 2.3 Aspect



**2.4 Star Slots**

**2.5 FID Slots**

# A Summary

## A.1 Status

V&V Scientist	Beth Sundheim
V&V Date (YYYY-MM-DD)	2006.03.05
V&V Edition	1
V&V Disposition and Status	OK
V&V Charge Time	8.09279996

## A.2 Comments

Focal plane temperature is elevated during initial ~1 ksec of observation.