

V&V Reference Report

L2 ASCDS Version : 8.4.5

Observation 60215 - L2 Version 3
Chandra X-Ray Center

L2 Processing Date : Dec 1 2012

Contents

1	Front	2
2	OBI Primary	3
2.1	OBI	3
2.1.1	Images	3
2.1.2	Bias	3
2.1.3	Parameters	4
2.1.4	Events	4
2.2	Compared Parameters	5
2.3	Star Slots	6
2.4	FID Slots	6
3	OBI Secondary	6
3.1	OBI	6
3.1.1	Images	6
3.1.2	Bias	6
3.1.3	Parameters	7
3.1.4	Events	7
A	Summary	8
A.1	Status	8
A.2	Comments	8

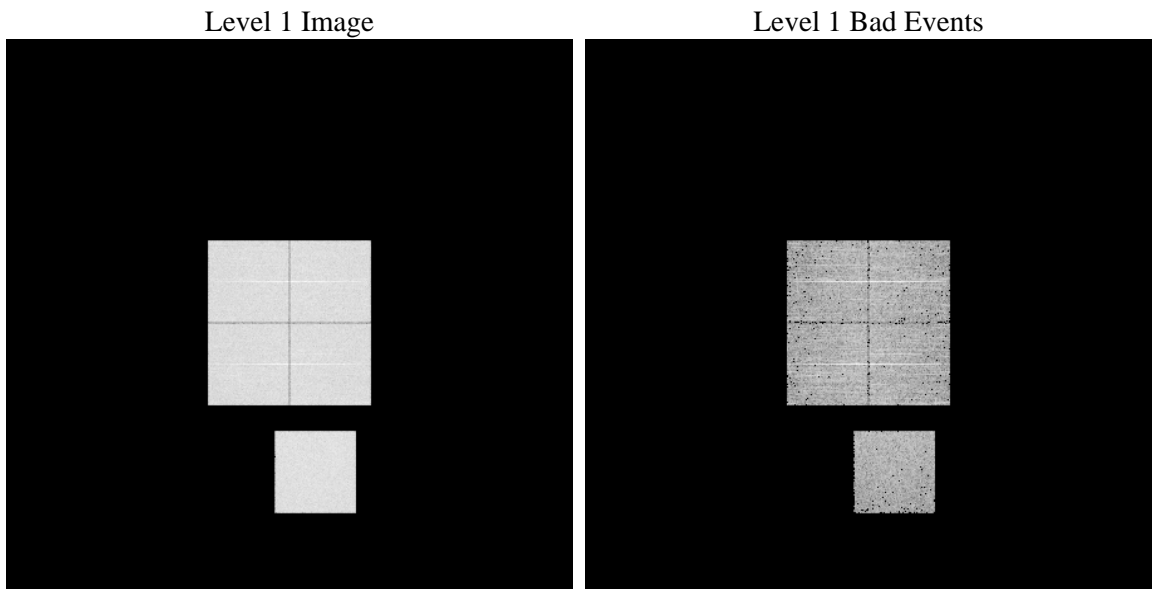
1 Front

seq_num	 	Sequence number
obs_id	60215	Observation id
title	ACIS-01237 diagnostics	Proposal title
observer	CHANDRA engineering request/realtime commanding	Principal investig
object	 	Source name
dtycycle	0	
cycle	P	events are from which exps? P[rimary] S[econdar
ra_targ	0.0	Observer's specified target RA [deg]
dec_targ	0.0	Observer's specified target Dec [deg]
ra_nom	114.00279298564	Nominal RA [deg]
dec_nom	-18.029071539949	Nominal Dec [deg]
roll_nom	231.41424343677	Nominal Roll [deg]
revision	3	Processing version of data
ontime	4399.2363321483	Sum of GTIs [s]
livetime	4348.2499950633	Livetime [s]
ontime0	4289.464092046	Sum of GTIs [s]
ontime1	4289.464092046	Sum of GTIs [s]
ontime2	4084.0837718546	Sum of GTIs [s]
ontime3	4169.0687319338	Sum of GTIs [s]
ontime7	4399.2363321483	Sum of GTIs [s]
l2events	624690	Number of level 2 events

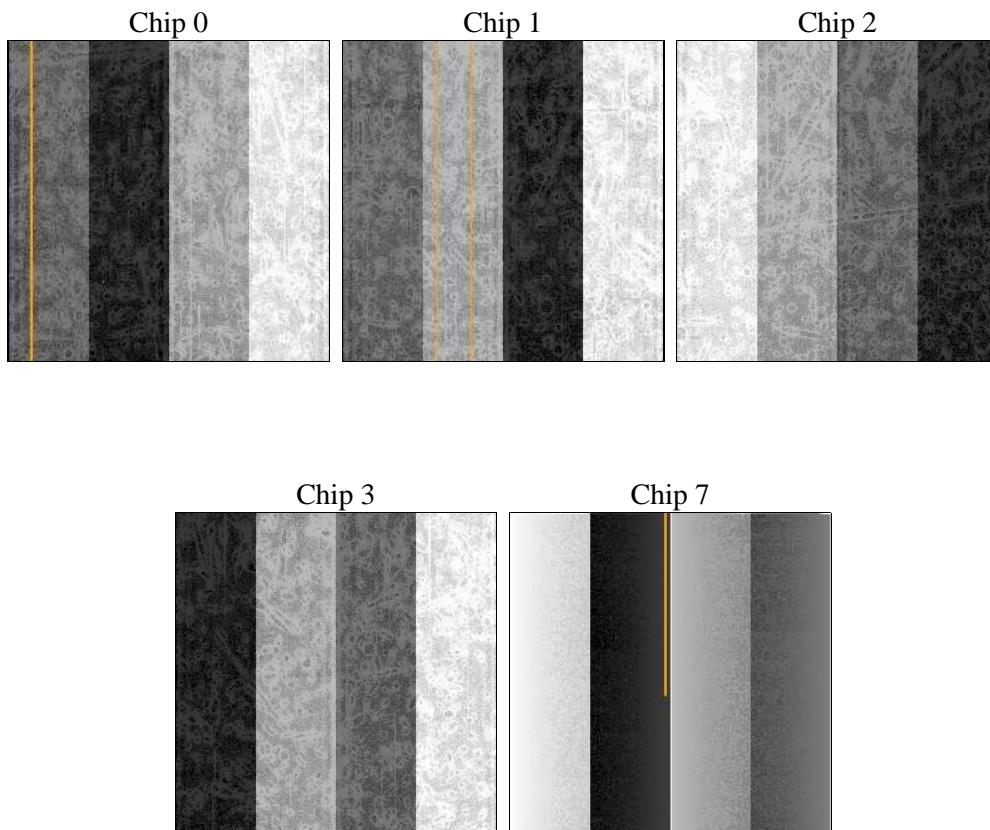
2 OBI Primary

2.1 OBI

2.1.1 Images



2.1.2 Bias



2.1.3 Parameters

obi_num	0	Obi number	sched_exp_time	0.0	[s] Scheduled observation exposure time
ascdsver	8.4.5	Processing system revision	ontime	4399.2363321483	Sum of GTIs [s]
caldbver	4.5.2	 	ontime0	4289.464092046	Sum of GTIs [s]
date	2012-12-02T00:39:57	Date and time of file creation	ontime1	4289.464092046	Sum of GTIs [s]
revision	3	Processing version of data	ontime2	4084.0837718546	Sum of GTIs [s]
			ontime3	4169.0687319338	Sum of GTIs [s]
			ontime7	4399.2363321483	Sum of GTIs [s]
			l1events	797911	Number of level 1 events

2.1.4 Events

	ccd 0	ccd 1	ccd 2	ccd 3	ccd 7
level 1 events	156061	159193	154370	157074	171213
rejected events	27432	28808	30285	29673	25243
rejected %	17%	18%	19%	18%	14%

	ccd 0	ccd 1	ccd 2	ccd 3	ccd 7
grade 0 events	70612	71360	69452	71701	35471
	45%	44%	44%	45%	20%
grade 1 events	440	397	483	453	108
	0%	0%	0%	0%	0%
grade 2 events	22613	23124	20751	21911	32163
	14%	14%	13%	13%	18%
grade 3 events	8449	8262	8157	8274	14820
	5%	5%	5%	5%	8%
grade 4 events	8305	8384	8109	8209	14561
	5%	5%	5%	5%	8%
grade 5 events	1877	1900	1782	1985	4750
	1%	1%	1%	1%	2%
grade 6 events	18757	19374	17721	17415	49088
	12%	12%	11%	11%	28%
grade 7 events	25008	26392	27915	27126	20252
	16%	16%	18%	17%	11%

2.2 Compared Parameters

Parameter	Planned	Actual	Parameter	Planned	Actual
Instrument	ACIS	ACIS	Obspar format version number	7	7
Detector	ACIS-01237	ACIS-01237	Obspar file type	PREDICTED	ACTUAL
Grating	NONE	NONE	Obspar update status	NONE	UPDATED
Data mode	FAINT	FAINT	On-chip summing requested	N	N
Observation mode	SECONDARY	SECONDARY	Subarray requested	NONE	NONE
[deg] Pointing RA	0	114.0027929856396	Alternating exposures requested	N	Y
[deg] Pointing Dec	0	-18.02907153994873	[s] Primary exposure time	0.000000	3.5
[deg] Pointing Roll	0.0	231.4142434367695	[s] Secondary exposure time	N/A	3.2
[mm] SIM focus pos	-0.782348	-0.6828225247311905	Duty cycle	N/A	1
[mm] SIM defocus	0	0.8505141146731063			
[mm] SIM translation stage pos	-233.592463	250.4635187648994			
[mm] SIM translation stage offset	0	-0.007540371344731511			
[s] Observation start time (MET)	202219053.052163	202219052.02718			
Observation start date	2004-05-29T11:57:33	2004-05-29T11:57:32			
[s] Observation end time (MET)	202242162.703182	202242161.6782			
Observation end date	2004-05-29T18:22:43	2004-05-29T18:22:41			
Read mode	TIMED	TIMED			

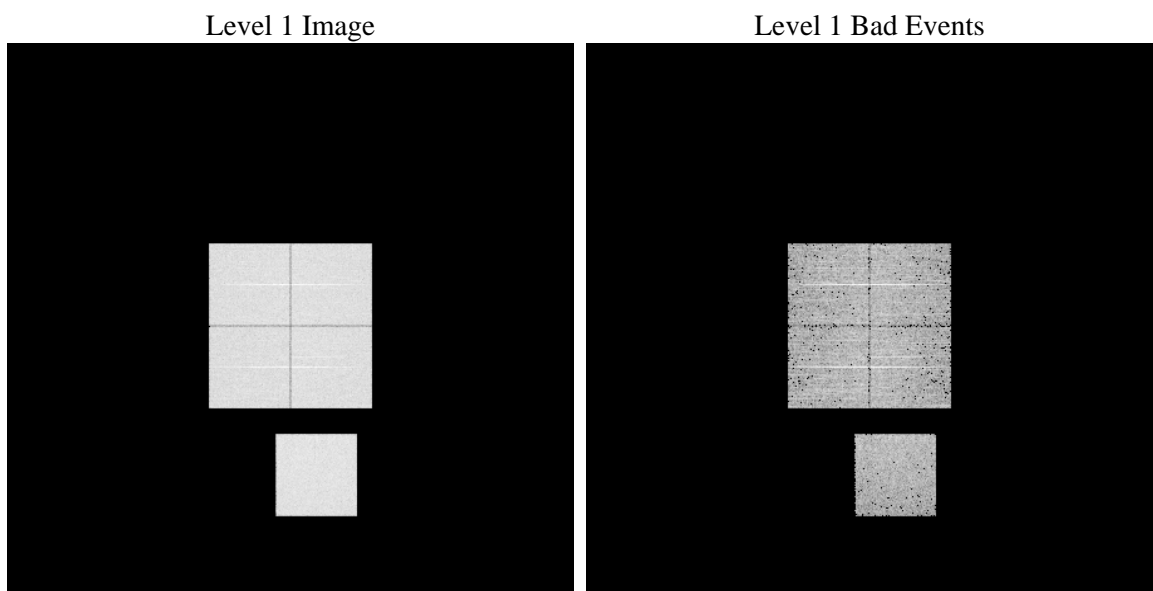
2.3 Star Slots

2.4 FID Slots

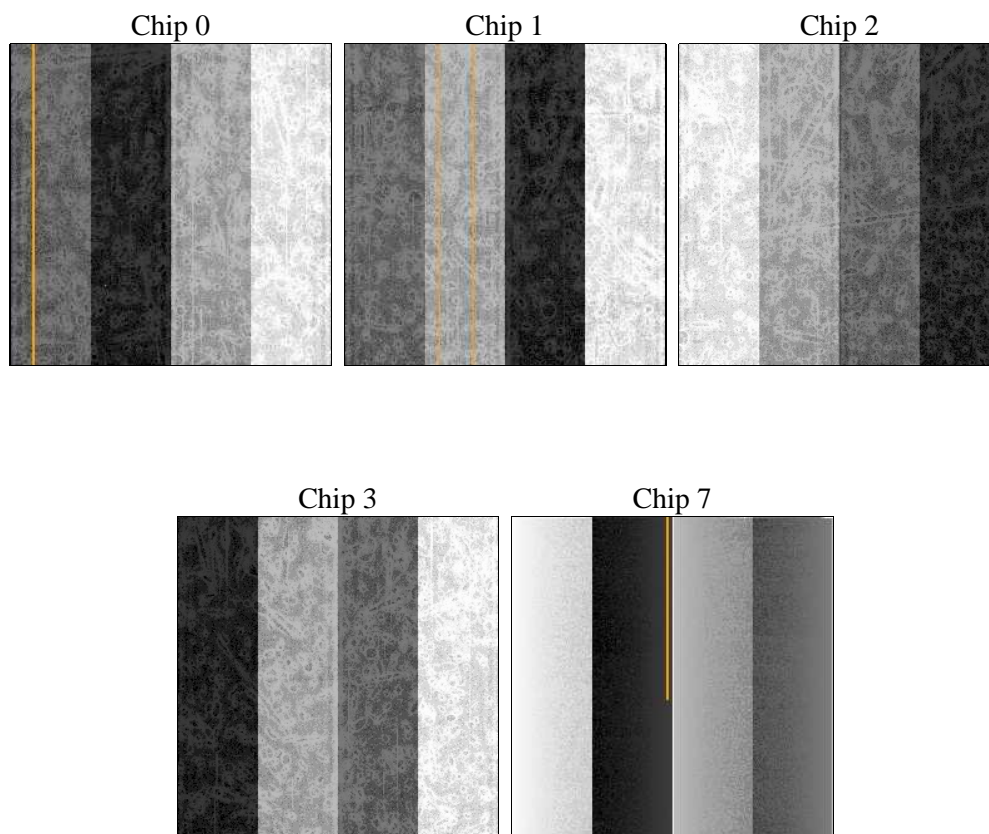
3 OBI Secondary

3.1 OBI

3.1.1 Images



3.1.2 Bias



3.1.3 Parameters

obi_num	0	Obi number	sched_exp_time	0.0	[s] Scheduled observation exposure time
ascdsver	8.4.5	Processing system revision	ontime	4026.6363472342	Sum of GTIs [s]
caldbver	4.5.2	 	ontime0	3887.271627605	Sum of GTIs [s]
date	2012-12-02T00:39:33	Date and time of file creation	ontime1	3874.3074676394	Sum of GTIs [s]
revision	3	Processing version of data	ontime2	3627.9884282947	Sum of GTIs [s]
			ontime3	3796.5225078464	Sum of GTIs [s]
			ontime7	4026.6363472342	Sum of GTIs [s]
			l1events	727334	Number of level 1 events

3.1.4 Events

	ccd 0	ccd 1	ccd 2	ccd 3	ccd 7
level 1 events	143177	144122	137701	143751	158583
rejected events	26299	26458	27319	27083	24151
rejected %	18%	18%	19%	18%	15%

	ccd 0	ccd 1	ccd 2	ccd 3	ccd 7
grade 0 events	64415	64296	62196	65700	32394
	44%	44%	45%	45%	20%
grade 1 events	366	303	402	414	112
	0%	0%	0%	0%	0%
grade 2 events	20311	20944	18498	19677	29574
	14%	14%	13%	13%	18%
grade 3 events	7516	7511	7335	7616	13543
	5%	5%	5%	5%	8%
grade 4 events	7547	7439	7084	7703	13434
	5%	5%	5%	5%	8%
grade 5 events	1641	1764	1646	1827	4364
	1%	1%	1%	1%	2%
grade 6 events	17177	17576	15368	16072	45601
	11%	12%	11%	11%	28%
grade 7 events	24204	24289	25172	24742	19561
	16%	16%	18%	17%	12%

A Summary

A.1 Status

V&V Scientist	Beth Sundheim
V&V Date (YYYY-MM-DD)	2012.12.13
V&V Edition	1
V&V Disposition and Status	OK
V&V Charge Time	8.4258726793825

A.2 Comments