

V&V Reference Report

L2 ASCDS Version : 7.6.9

Observation 60905 - L2 Version 001
Chandra X-Ray Center

L2 Processing Date : Oct 16 2006

Contents

1	Front	2
2	OBI	3
2.1	OBI	3
2.1.1	Images	3
2.1.2	Bias	3
2.1.3	Parameters	4
2.1.4	Events	4
2.2	Compared Parameters	5
2.3	Aspect	6
2.4	Star Slots	8
2.5	FID Slots	8
A	Summary	9
A.1	Status	9
A.2	Comments	9

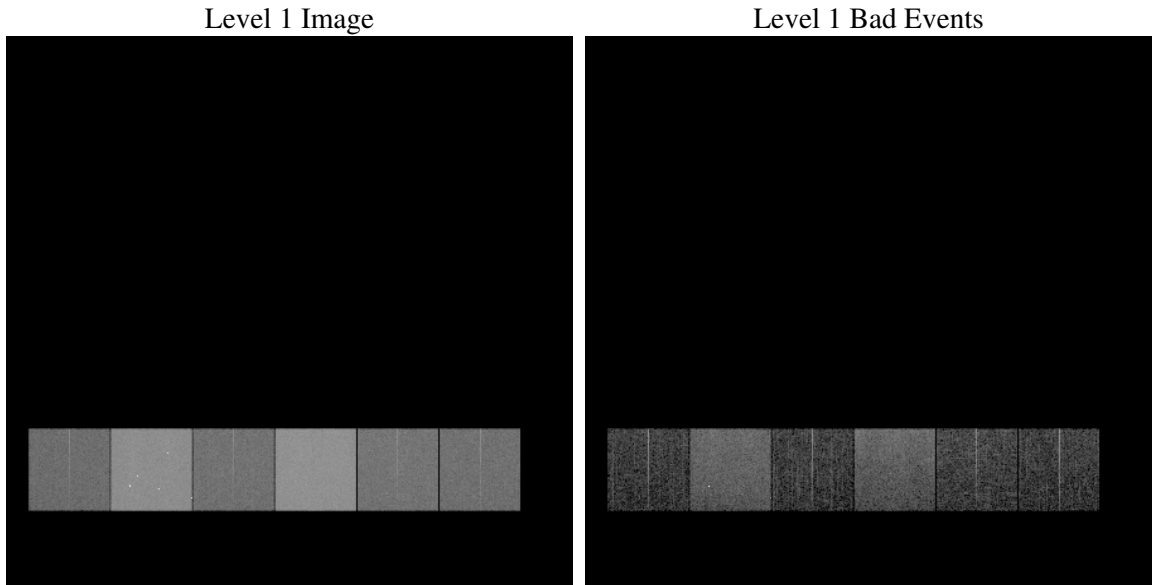
1 Front

seq_num	
obs_id	60905
title	ACIS-456789 diagnostics
observer	CHANDRA engineering request/realtime commanding
object	
dtcycle	0
cycle	P
ra_targ	0.0
dec_targ	0.0
ra_nom	94.165388907803
dec_nom	49.582264105598
roll_nom	185.4236667566
revision	2
ontime	8393.5999687314
livetime	8287.3151519082
ontime4	3240.6577173173
ontime5	8393.5999687314
ontime6	3493.4161630273
ontime7	8393.5999687314
ontime8	3687.9592085779
ontime9	3483.5703513324
l2events	1253545

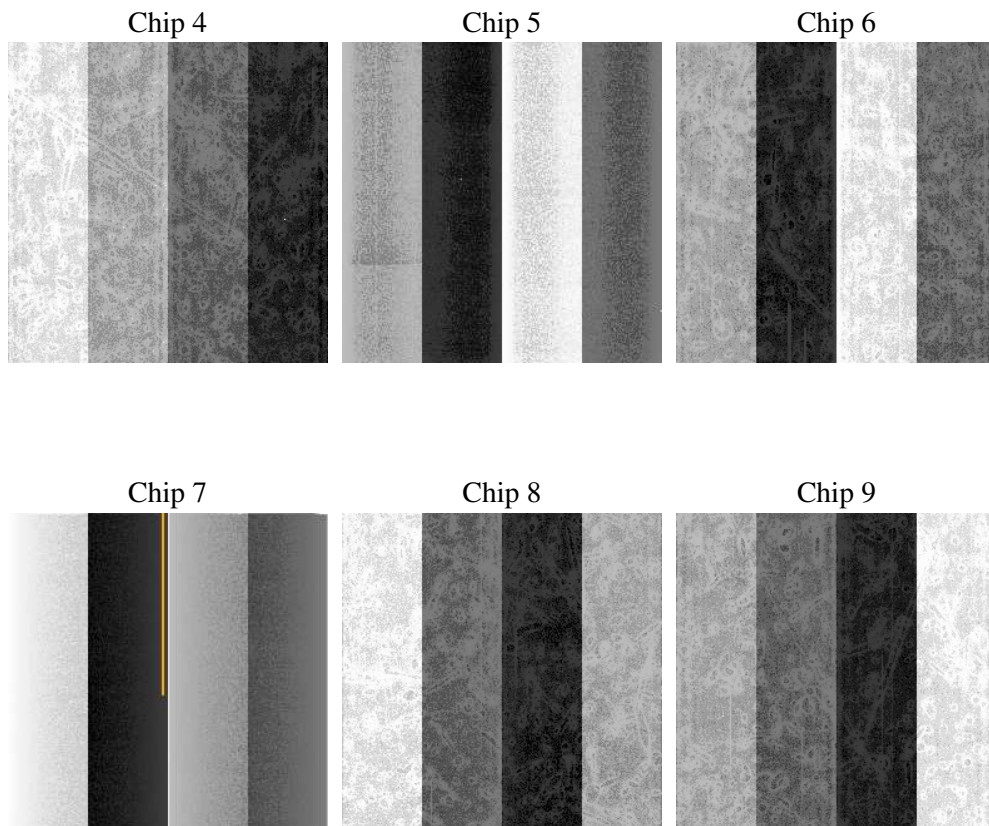
2 OBI

2.1 OBI

2.1.1 Images



2.1.2 Bias



2.1.3 Parameters

obi_num	1
ascdsver	7.6.9
caldbver	3.2.3
date	2006-10-16T09:00:03
revision	2

sched_exp_time	0.0
ontime	8465.5021135807
ontime4	3266.9633407593
ontime5	8465.5021135807
ontime6	3526.2449064553
ontime7	8465.5021135807
ontime8	3720.7058023214
ontime9	3506.7990947962
l1events	1546154

2.1.4 Events

	ccd 4	ccd 5	ccd 6	ccd 7	ccd 8	ccd 9
level 1 events	161325	396725	184479	428793	197950	176882
rejected events	24938	68236	25665	59074	29058	25094
rejected %	15%	17%	13%	13%	14%	14%

	ccd 4	ccd 5	ccd 6	ccd 7	ccd 8	ccd 9
grade 0 events	79721	41708	87226	69334	93723	84243
	49%	10%	47%	16%	47%	47%
grade 1 events	542	191	463	155	466	403
	0%	0%	0%	0%	0%	0%
grade 2 events	21962	157026	27633	111372	29913	26037
	13%	39%	14%	25%	15%	14%
grade 3 events	9133	11070	9945	28439	10902	9741
	5%	2%	5%	6%	5%	5%
grade 4 events	9168	11055	9765	27749	10906	9869
	5%	2%	5%	6%	5%	5%
grade 5 events	1598	7412	1756	7551	2088	1771
	0%	1%	0%	1%	1%	1%
grade 6 events	17497	110359	25750	136099	24933	22845
	10%	27%	13%	31%	12%	12%
grade 7 events	21704	57904	21941	48094	25019	21973
	13%	14%	11%	11%	12%	12%

2.2 Compared Parameters

Parameter	Planned	Actual	Parameter	Planned	Actual
Instrument	ACIS	ACIS	Obspar format version number	6	6
Detector	ACIS-456789	ACIS-456789	Obspar file type	PREDICTED	ACTUAL
Grating	NONE	NONE	Obspar update status	NONE	UPDATED
Data mode	FAINT	FAINT	On-chip summing requested	N	N
Observation mode	SECONDARY	SECONDARY	Subarray requested	NONE	NONE
Pointing RA	0	94.16538890780299	Alternating exposures requested	N	N
Pointing Dec	0	49.58226410559841	Primary exposure time	3.2	3.2
Pointing Roll	0.0	185.4236667566042			
SIM focus pos (mm)	-0.684267	-0.6828225247311905			
SIM defocus (mm)	0	0.8505141146731063			
SIM translation stage pos (mm)	-190.132523	250.4635187648994			
SIM translation stage offset (mm)	0	-0.007540371344731511			
Observation start time	157435880.67818	157435879.65347			
Observation start date	2002-12-28T04:11:21	2002-12-28T04:11:19			
Observation end time	157458254.379114	157458253.35441			
Observation end date	2002-12-28T10:24:14	2002-12-28T10:24:13			
Read mode	TIMED	TIMED			

2.3 Aspect

2.4 Star Slots

2.5 FID Slots

A Summary

A.1 Status

V&V Scientist	Jen Lauer
V&V Date (YYYY-MM-DD)	2006.10.16
V&V Edition	1
V&V Disposition and Status	OK
V&V Charge Time	8.39359996

A.2 Comments