

V&V Reference Report

L2 ASCDS Version : 8.4.3

Observation 6095 - L2 Version 5
Chandra X-Ray Center

L2 Processing Date : Aug 10 2012

Contents

1	Front	2
2	OBI	3
2.1	OBI	3
2.1.1	Images	3
2.1.2	Parameters	4
2.1.3	Events	4
2.2	Compared Parameters	5
2.3	Aspect	6
2.4	Star Slots	9
2.4.1	Slot 3	9
2.4.2	Slot 4	10
2.4.3	Slot 5	11
2.4.4	Slot 6	12
2.4.5	Slot 7	13
2.5	FID Slots	14
2.5.1	Slot 0	14
2.5.2	Slot 1	15
A	Summary	16
A.1	Status	16
A.2	Comments	16

1 Front

seq_num	990006	Sequence number
obs_id	6095	Observation id
title	AO6 Calibration Observations of the ACIS charged particle background	
observer	Dr. CXC Calibration	Principal investigator
object	RXJ1856.5-3754	Source name
ra_targ	284.147083	Observer's specified target RA [deg]
dec_targ	-37.909611	Observer's specified target Dec [deg]
ra_nom	283.40997539875	Nominal RA [deg]
dec_nom	-37.848745893718	Nominal Dec [deg]
roll_nom	263.32585281293	Nominal Roll [deg]
revision	5	Processing version of data
ontime	47920.67408976	[s]
livetime	46782.474419161	Ontime multiplied by DTCOR
l2events	126086	Number of level 2 events



2 OBI

2.1 OBI

2.1.1 Images



2.1.2 Parameters

obi_num	0	Obi number	sched_exp_time	48000.000000	[s] Scheduled observation exposure time
ascdsver	8.4.5	Processing system revision	ontime	47953.60221386	[s]
caldbver	4.5.1.1	 	l1events	168138	Number of level 1 events
date	2012-08-10T18:05:53	Date and time of file creation			
revision	5	Processing version of data			

2.1.3 Events

Level 1 Events

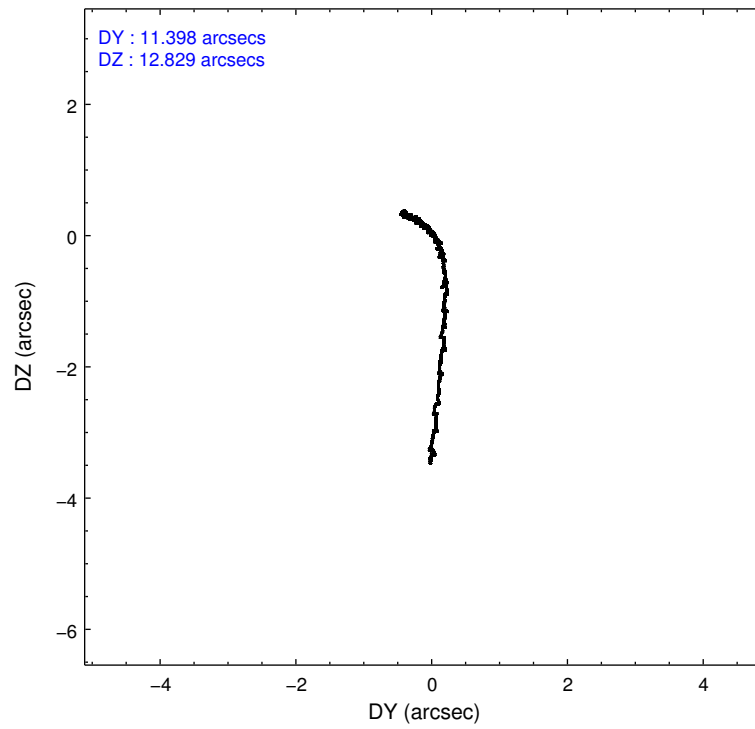
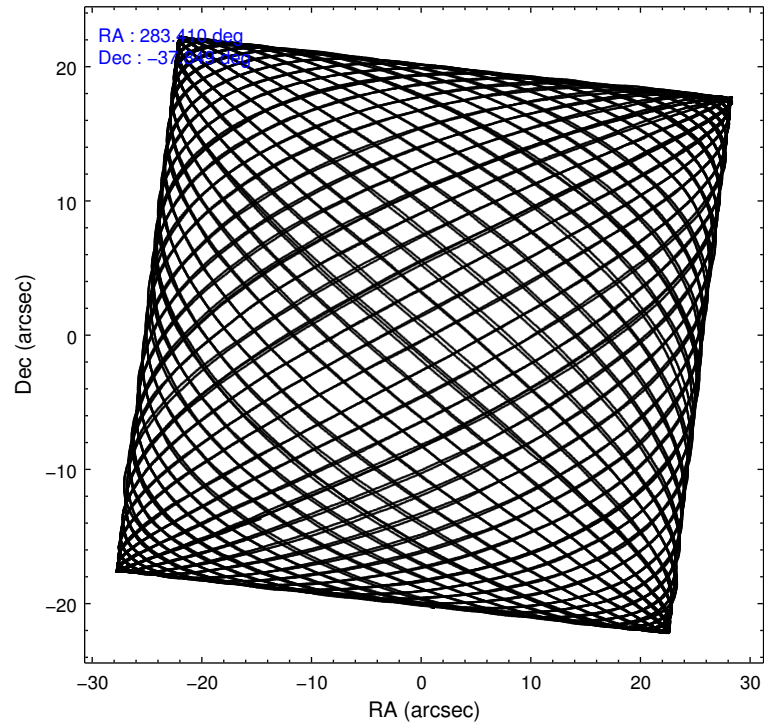
	segment 0
level 1 events	168138
rejected events	112
rejected %	0%

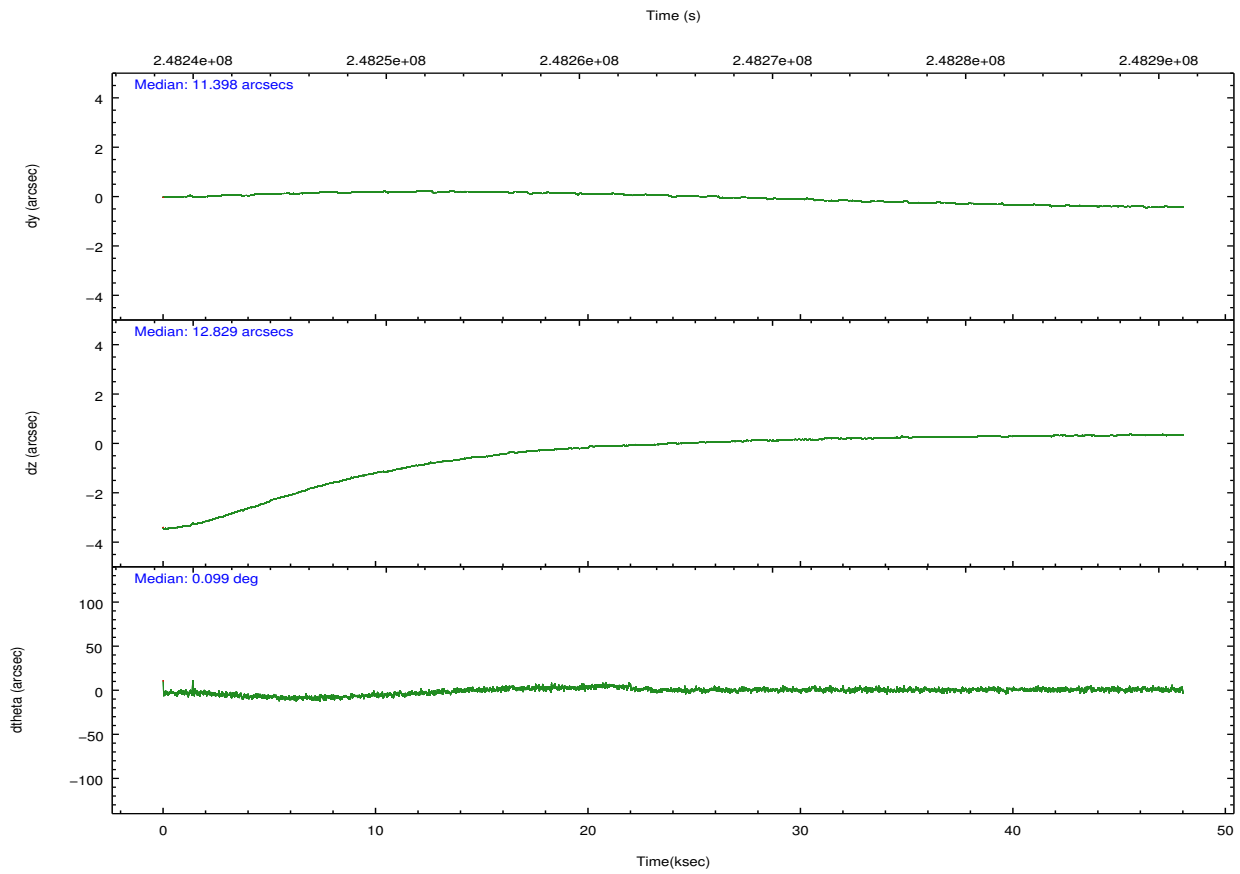
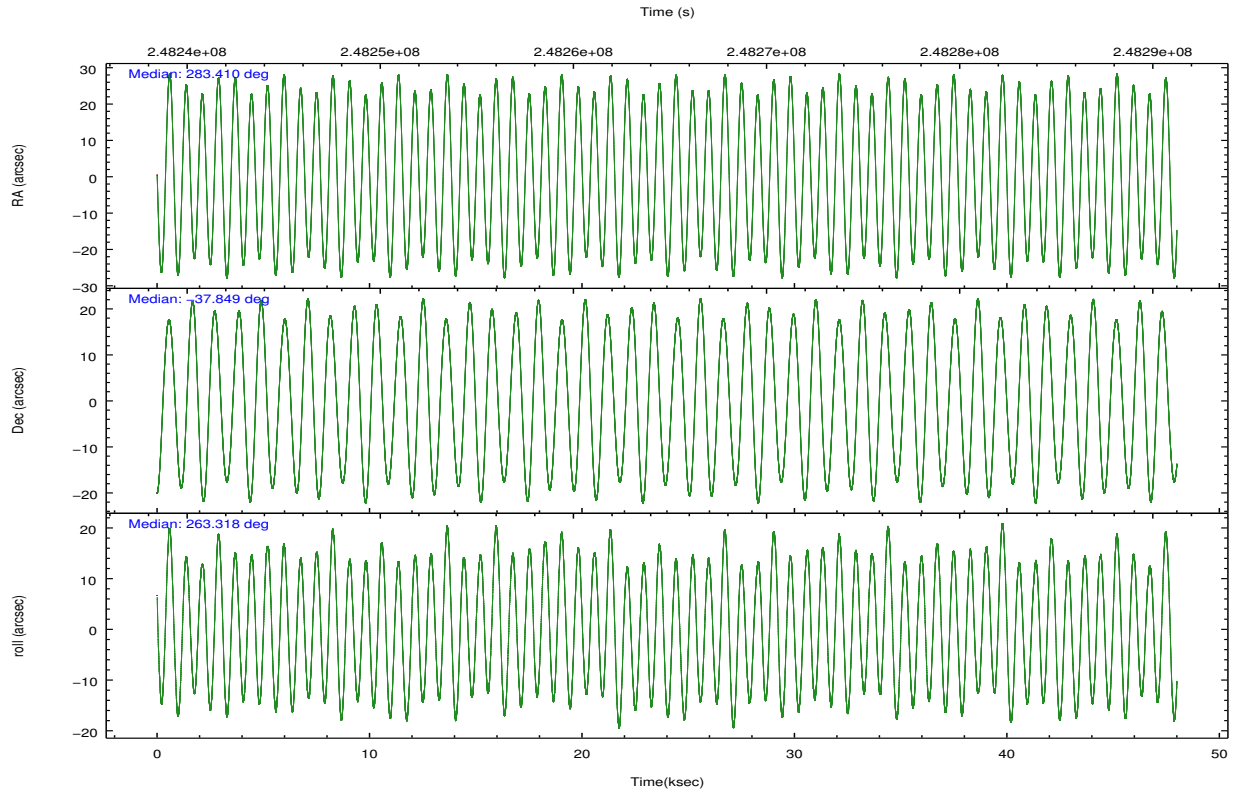
2.2 Compared Parameters

Parameter	Planned	Actual
Instrument	HRC	HRC
Detector	HRC-I	HRC-I
Grating	NONE	NONE
Data mode	NEXT_IN_LINE	NEXT_IN_LINE
Observation mode	POINTING	POINTING
[deg] Pointing RA	283.4099797235825	283.4099753987497
[deg] Pointing Dec	-37.84871834108044	-37.84874589371814
[deg] Pointing Roll	263.3258554512857	263.3258528129255
[s] Window start time (MET)	247190464.184000	247190464.184000
[s] Window stop time (MET)	249696064.184000	249696064.184000
[mm] SIM focus pos	-1.038866356238299	-1.038866356238299
[mm] SIM defocus	0.00142623211714632	0.00142623211714632
[mm] SIM translation stage pos	51.9960404362608	51.9960404362608
[mm] SIM translation stage offset	74.989453869027	74.989453869027
[s] Observation start time (MET)	248240852.184	248240852.184
Observation start date	2005-11-13T03:46:28	2005-11-13T03:47:32
[s] Observation end time (MET)	248288854.785552	248288854.785552
Observation end date	2005-11-13T17:06:28	2005-11-13T17:07:34

Parameter	Planned	Actual
Obspar format version number	7	7
Obspar file type	PREDICTED	ACTUAL
Obspar update status	OVERRIDE	OVERRIDE

2.3 Aspect



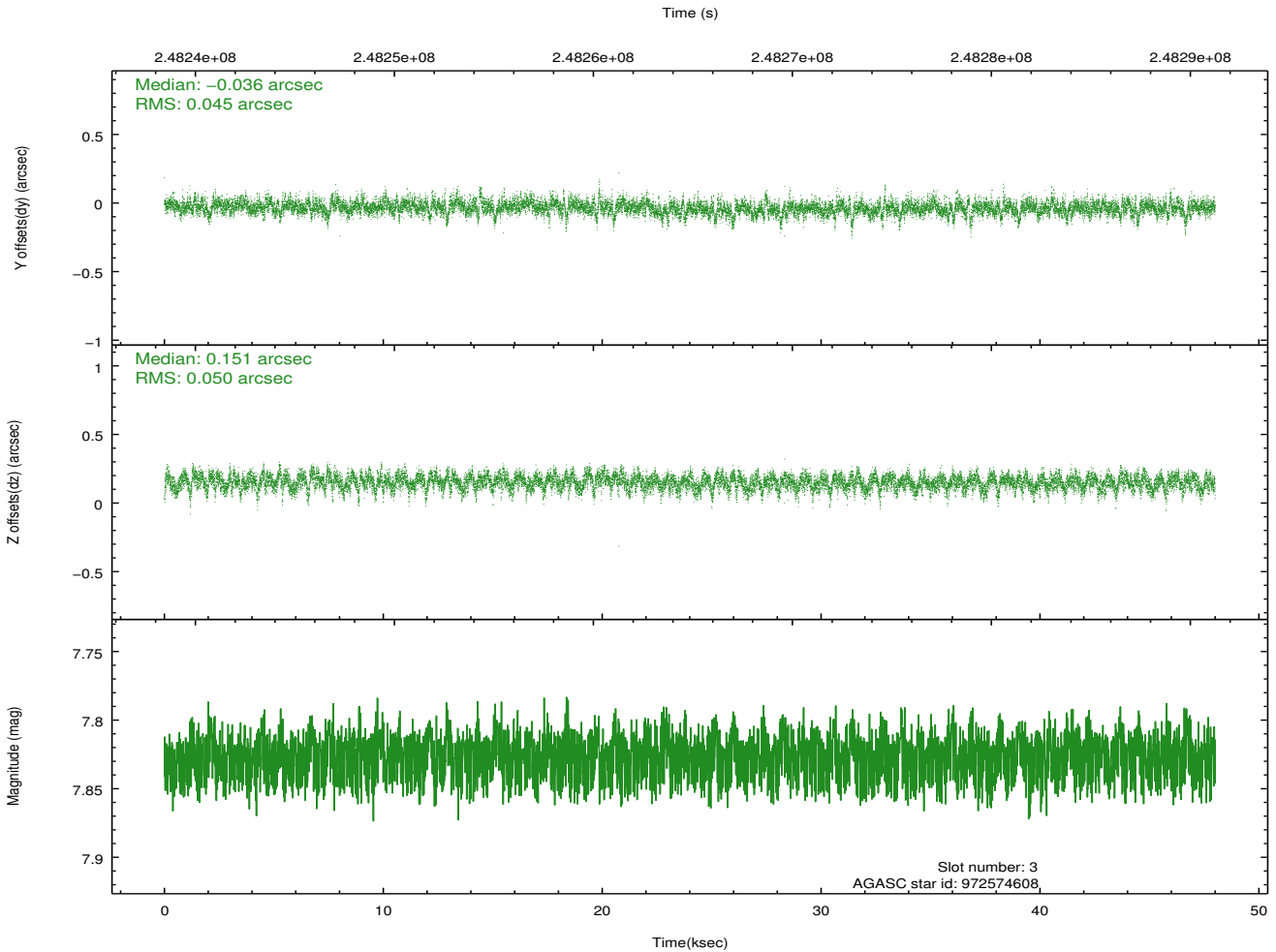
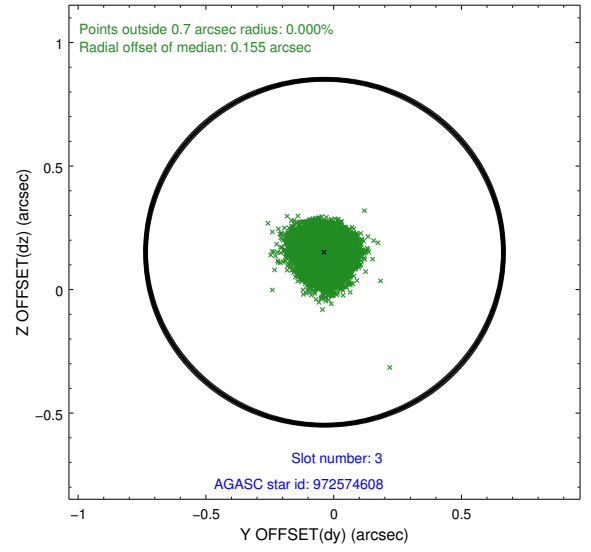
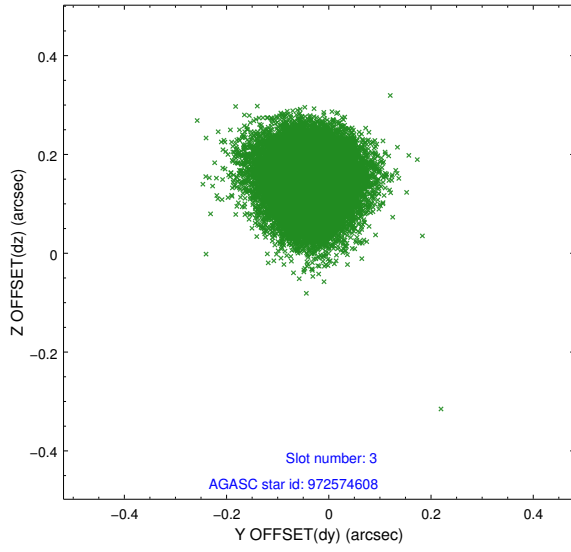


Slot Statistics

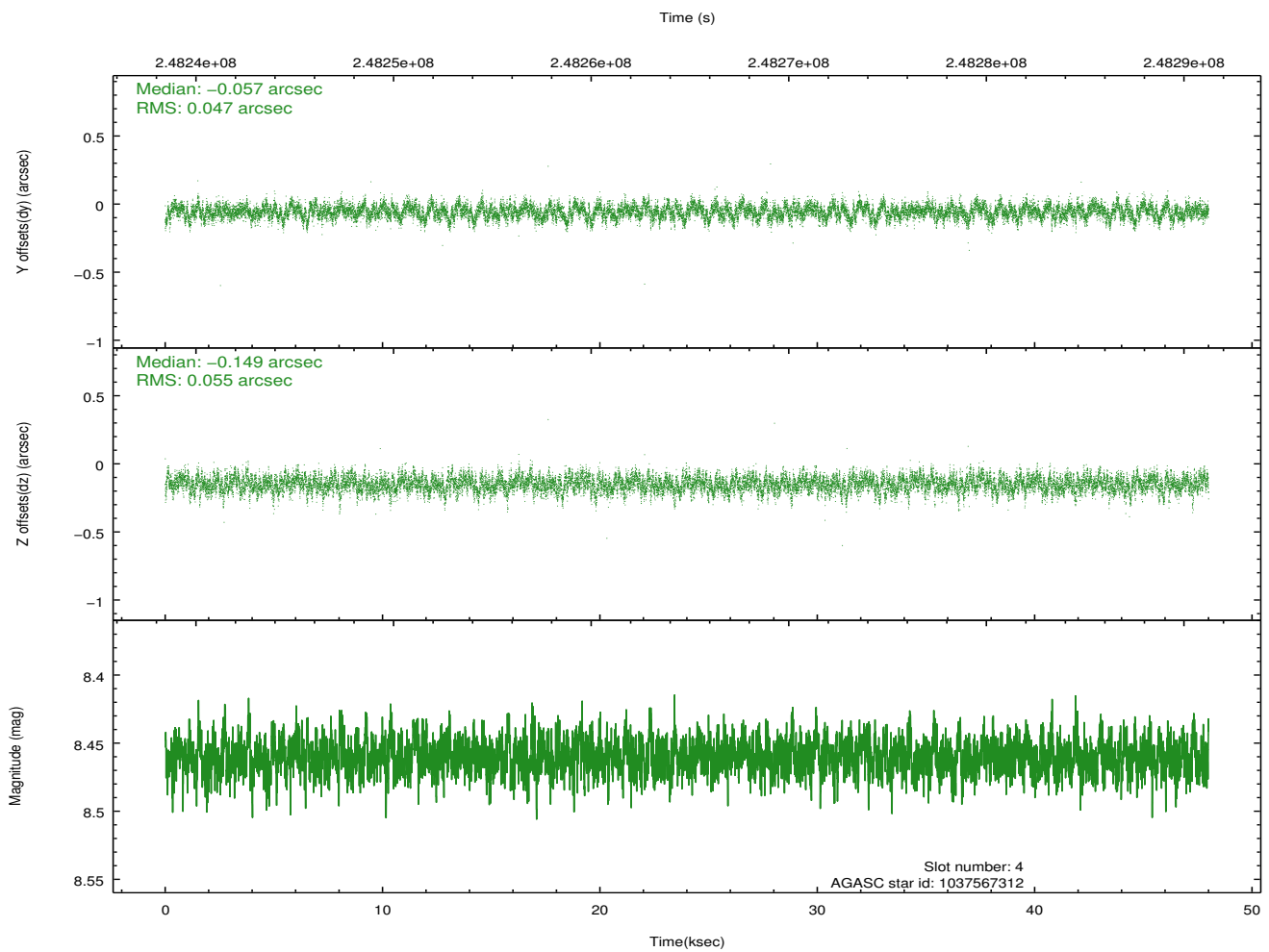
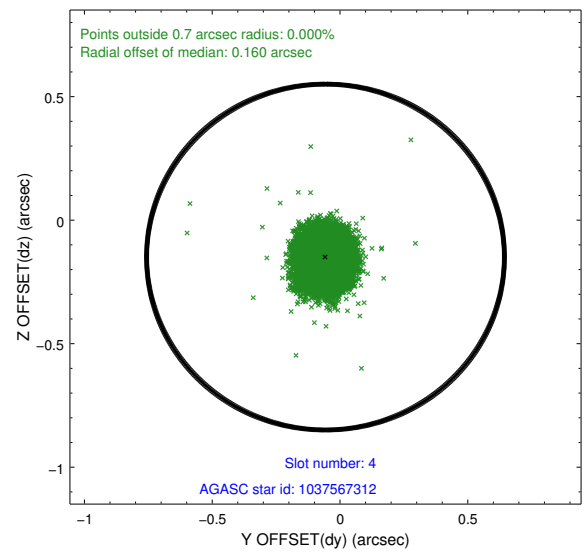
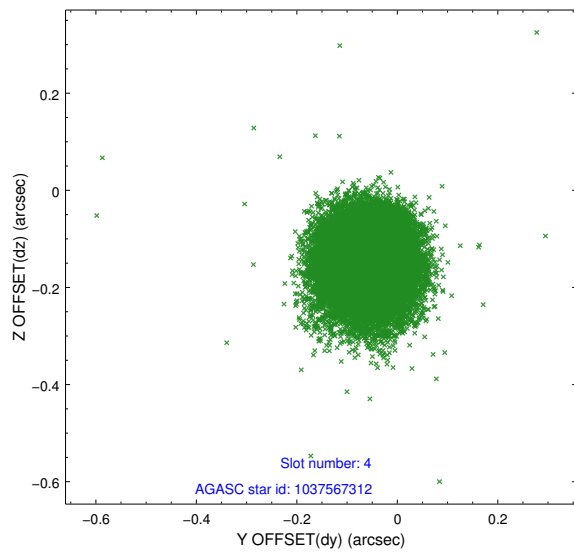
slot	status	id	mag	n_pts	med_dy	med_dz	dr1	dr2	ra	dec	mean_y	mean_z
0	FID	HRC-I-1	6.90	11706	-0.621	-0.028	0.009	0.015	0.000000	0.000000	-765.72	237.53
1	FID	HRC-I-2	7.03	11703	0.700	-0.026	0.009	0.015	0.000000	0.000000	845.09	238.58
2	UNUSED		0.00	0	0.000	0.000	0.000	0.000	0.000000	0.000000	0.00	0.00
3	GUIDE	972574608	7.83	23403	-0.036	0.151	0.071	0.117	283.352847	-37.274388	-1951.44	-348.88
4	GUIDE	1037567312	8.46	23411	-0.057	-0.149	0.076	0.123	283.456056	-37.976515	525.64	233.22
5	GUIDE	1037567328	8.85	23320	-0.087	-0.012	0.083	0.135	284.052016	-37.647288	-840.41	1786.29
6	GUIDE	1037587688	9.31	23373	0.166	-0.038	0.125	0.235	282.777537	-38.312745	1954.29	-1531.63
7	GUIDE	1037576824	8.72	23405	0.019	0.047	0.085	0.137	284.177029	-38.323536	1542.33	2399.90

2.4 Star Slots

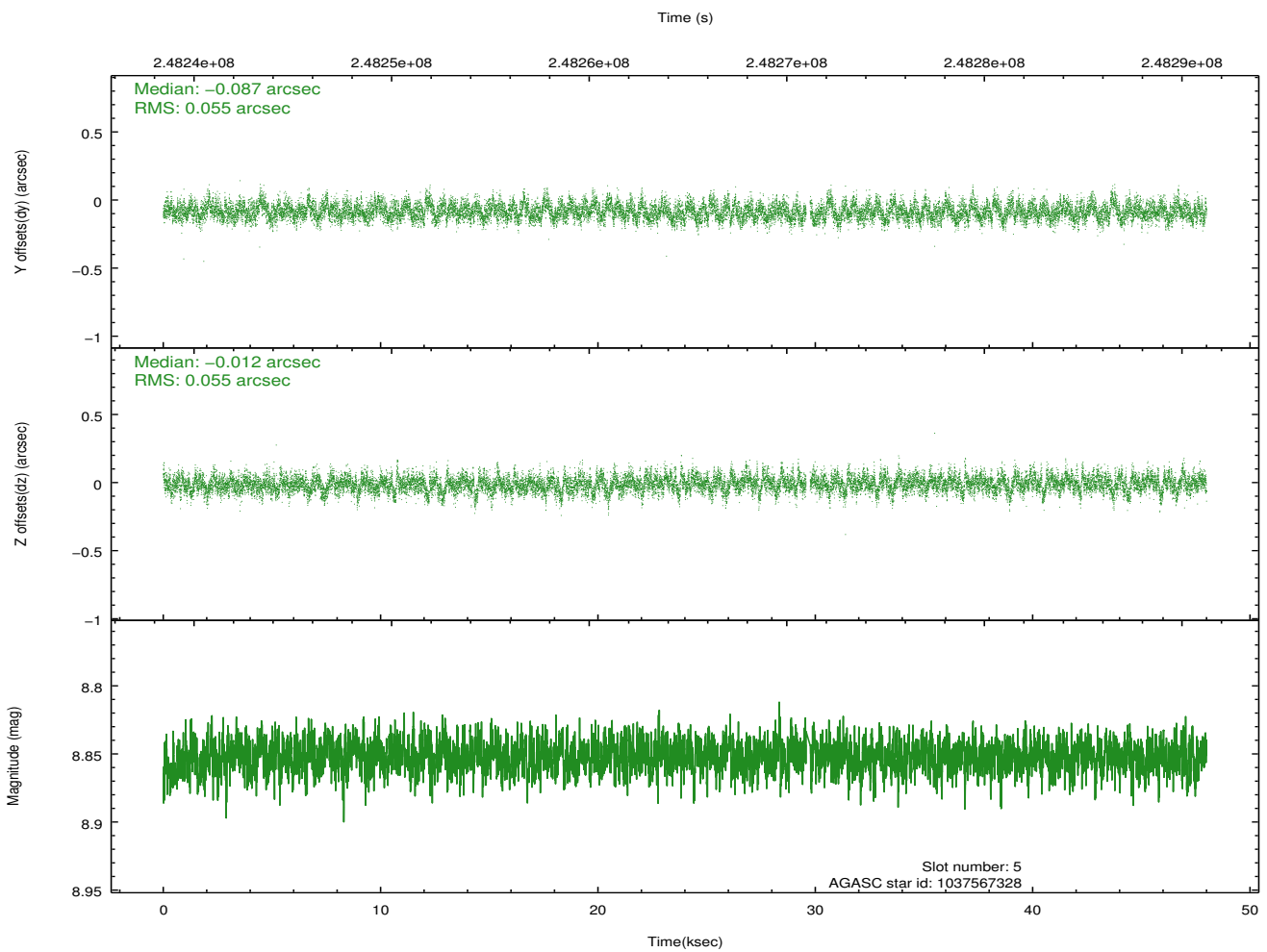
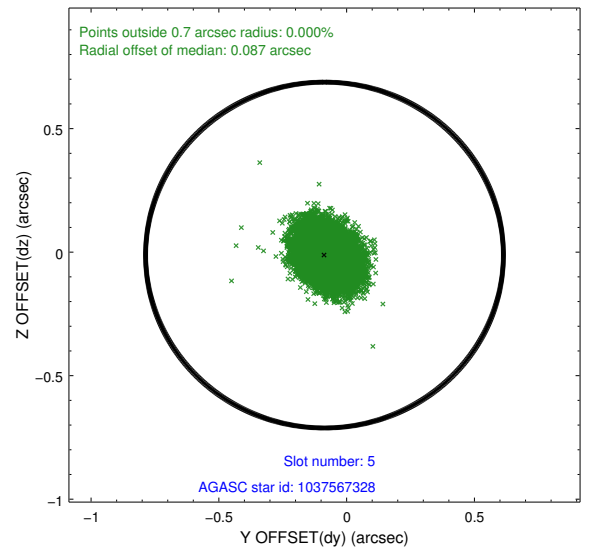
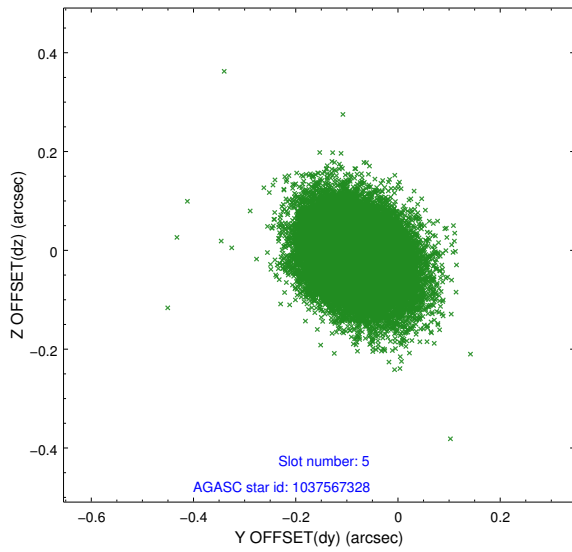
2.4.1 Slot 3



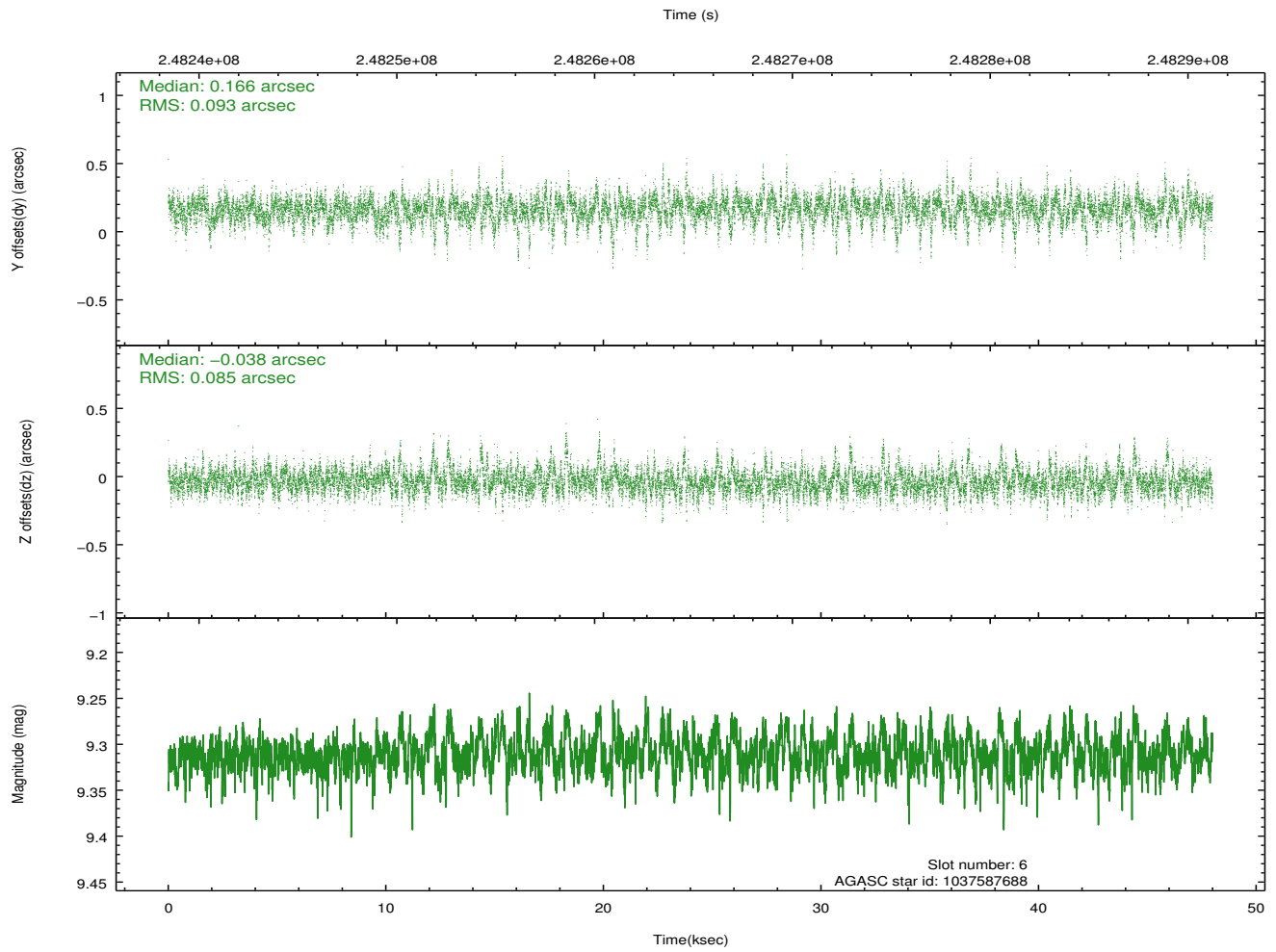
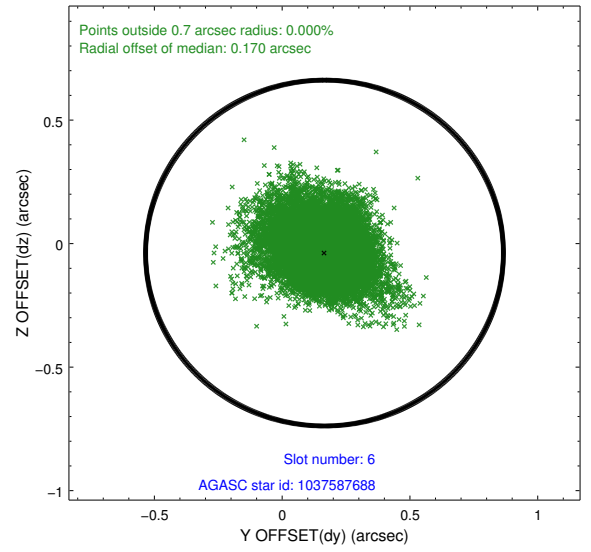
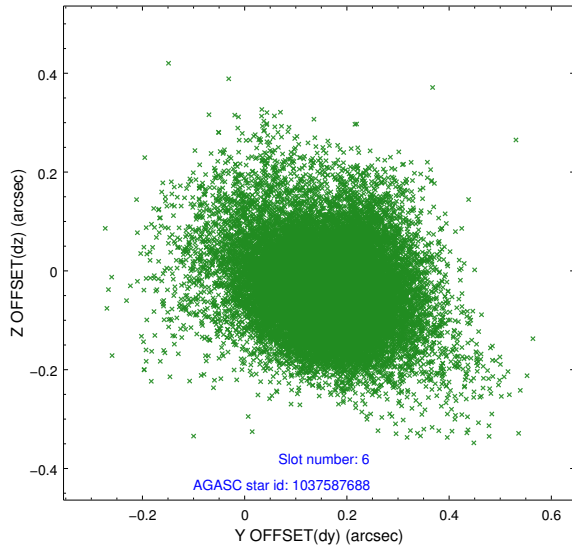
2.4.2 Slot 4



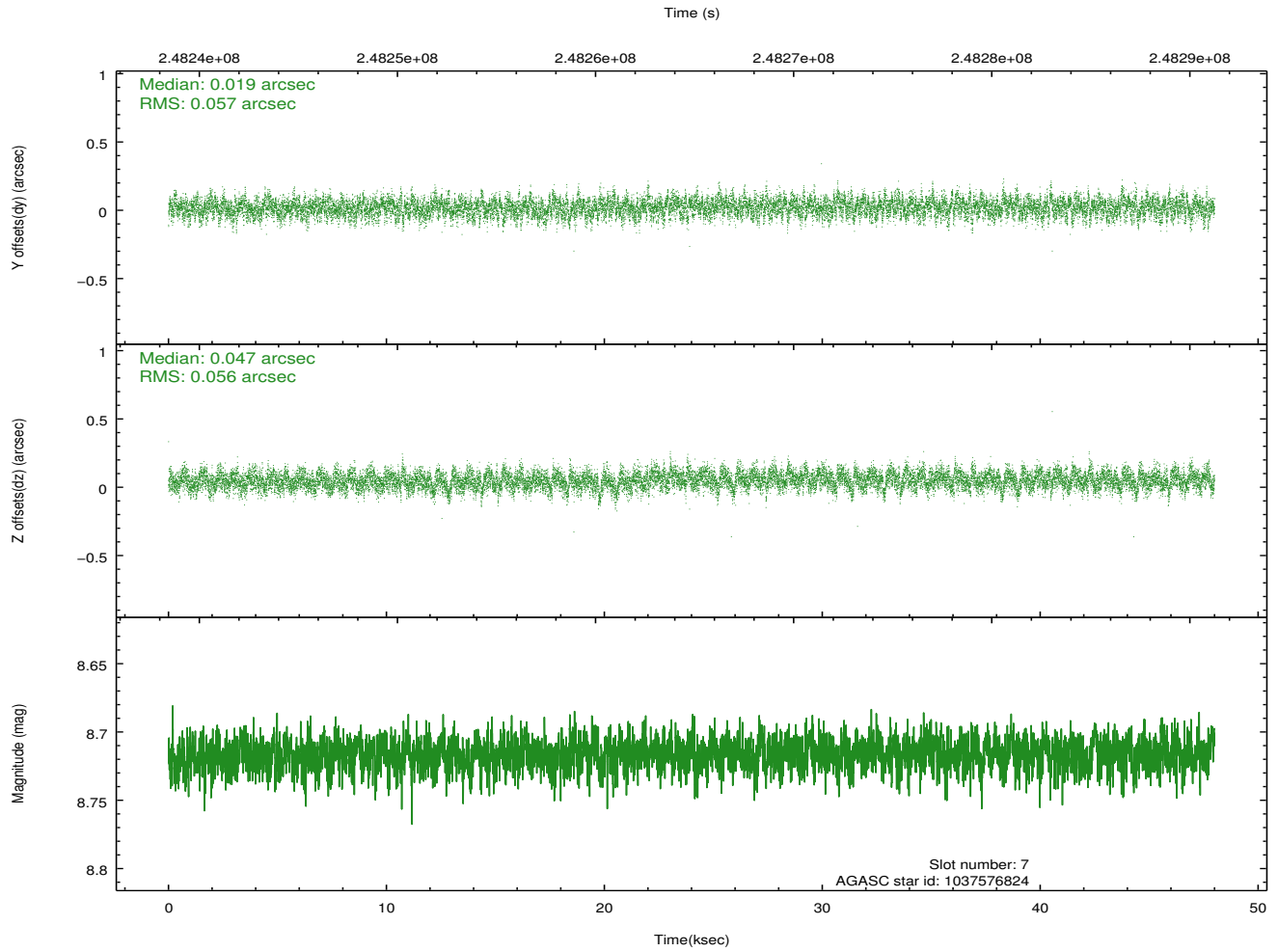
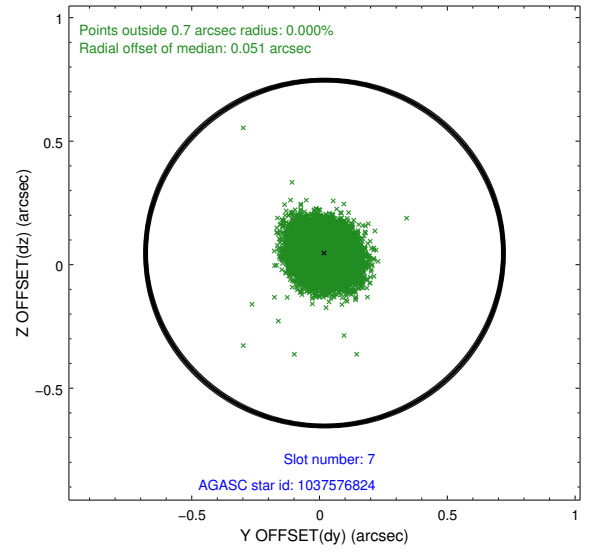
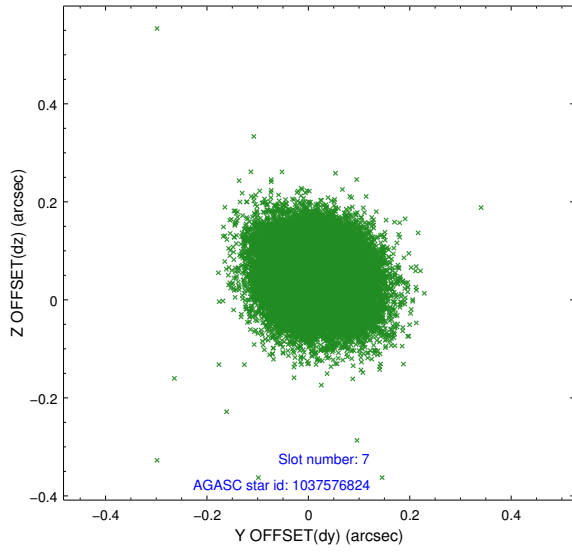
2.4.3 Slot 5



2.4.4 Slot 6

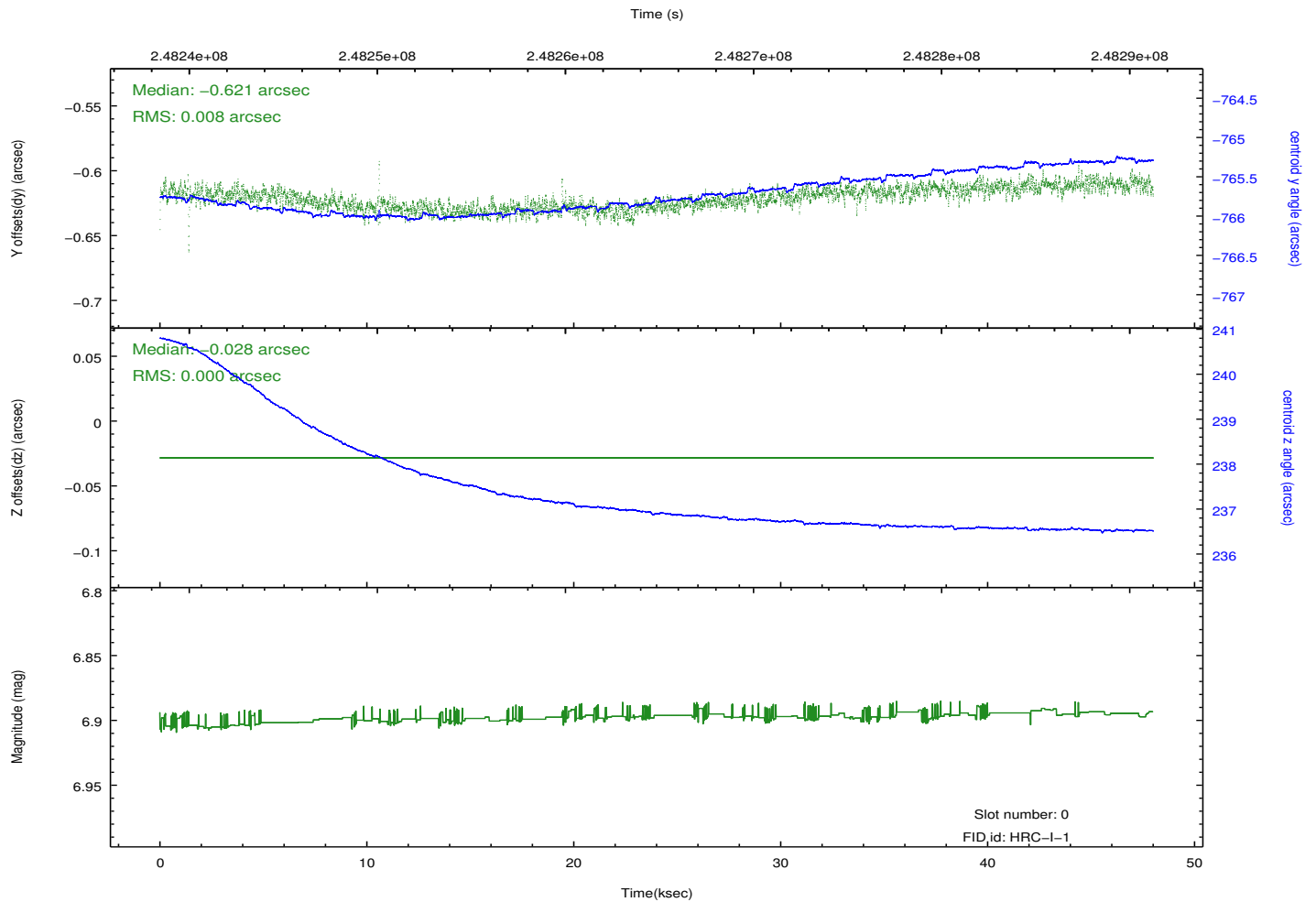
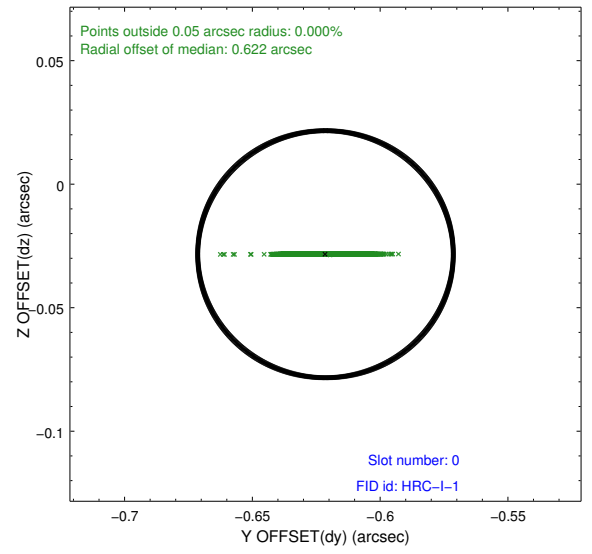
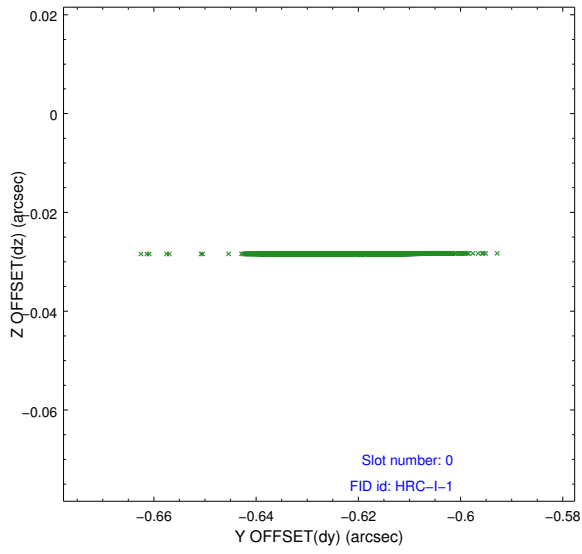


2.4.5 Slot 7

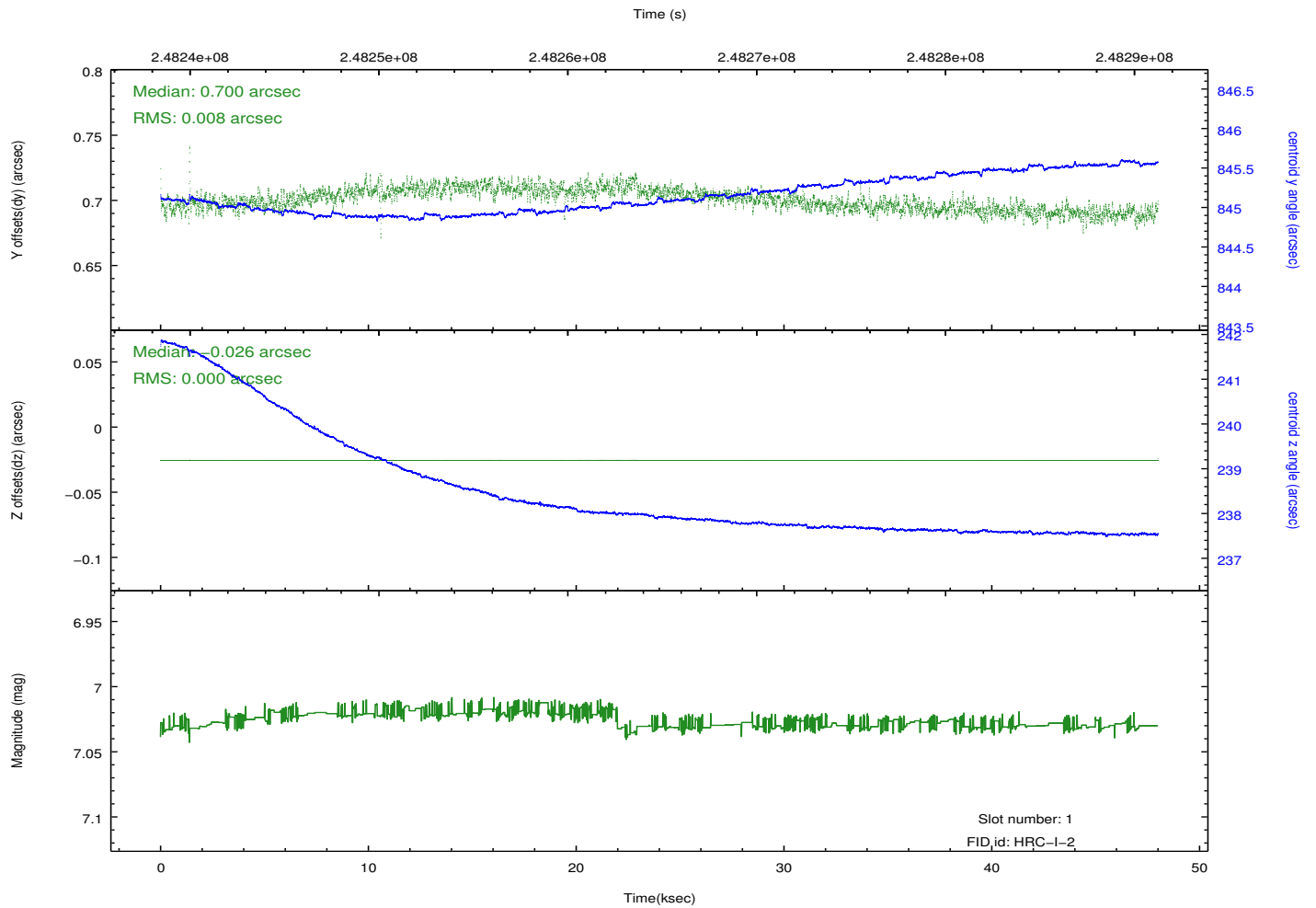
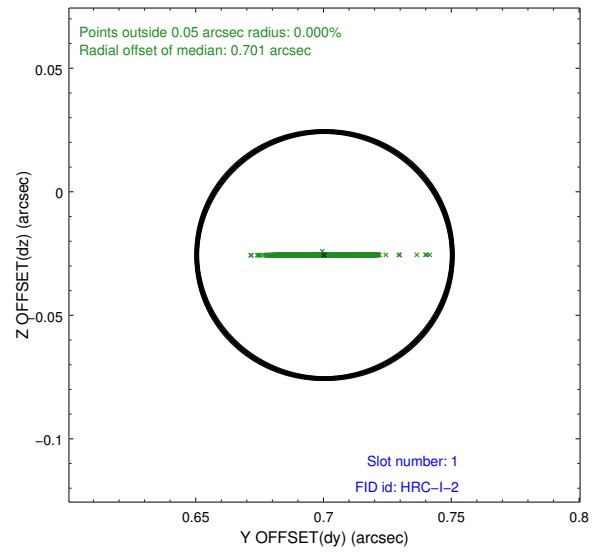
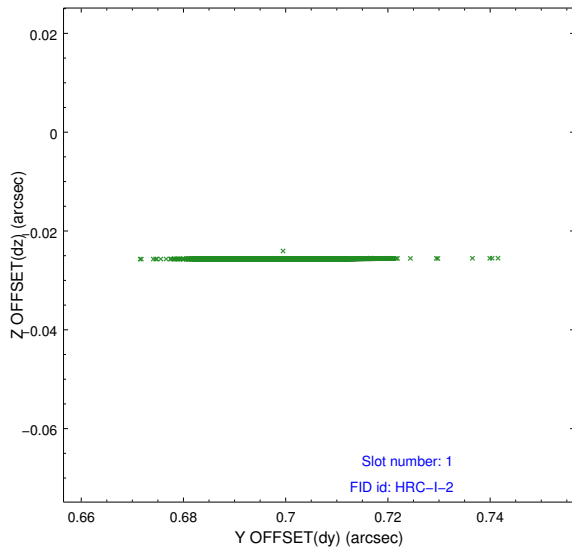


2.5 FID Slots

2.5.1 Slot 0



2.5.2 Slot 1



A Summary

A.1 Status

V&V Scientist	Jen Lauer
V&V Date (YYYY-MM-DD)	2012.08.12
V&V Edition	1
V&V Disposition and Status	OK
V&V Charge Time	47.91977

A.2 Comments

Slot 2 was not used in this observation. This observation was performed with a large SIM offset, per PI request. As a result, the fid light positions are offset beyond normally expected ranges, but the fid light position correction has compensated for this offset. Window constraint met.