

# V&V Reference Report

## L2 ASCDS Version : 8.4.5

Observation 61355 - L2 Version 3  
Chandra X-Ray Center

L2 Processing Date : Sep 30 2012

## Contents

<b>1</b>	<b>Front</b>	<b>2</b>
<b>2</b>	<b>OBI</b>	<b>3</b>
2.1	OBI . . . . .	3
2.1.1	Images . . . . .	3
2.1.2	Bias . . . . .	3
2.1.3	Parameters . . . . .	4
2.1.4	Events . . . . .	4
2.2	Compared Parameters . . . . .	5
2.3	Star Slots . . . . .	6
2.4	FID Slots . . . . .	6
<b>A</b>	<b>Summary</b>	<b>7</b>
A.1	Status . . . . .	7
A.2	Comments . . . . .	7

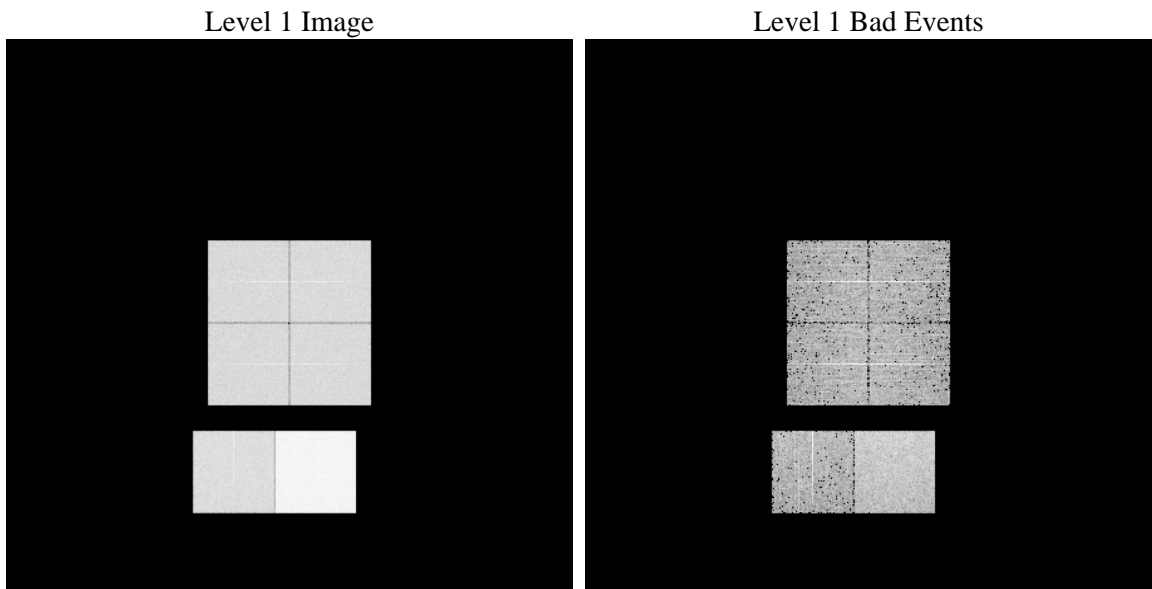
# 1 Front

seq_num	&#160	Sequence number
obs_id	61355	Observation id
title	ACIS-012367 diagnostics	Proposal title
observer	CHANDRA engineering request/realtime commanding	Principal investig
object	&#160	Source name
dtycle	0	&#160
cycle	P	events from which exps? Prim/Second/Both
ra_targ	0.0	Observer's specified target RA [deg]
dec_targ	0.0	Observer's specified target Dec [deg]
ra_nom	352.02295712544	Nominal RA [deg]
dec_nom	-11.517734916221	Nominal Dec [deg]
roll_nom	288.96292940273	Nominal Roll [deg]
revision	3	Processing version of data
ontime	7622.400007084	Sum of GTIs [s]
livetime	7525.8805885361	Livetime [s]
ontime0	2958.6335768998	Sum of GTIs [s]
ontime1	3062.138887316	Sum of GTIs [s]
ontime2	2841.7904930413	Sum of GTIs [s]
ontime3	2903.2056545764	Sum of GTIs [s]
ontime6	3185.5053298175	Sum of GTIs [s]
ontime7	7622.400007084	Sum of GTIs [s]
l2events	1213080	Number of level 2 events

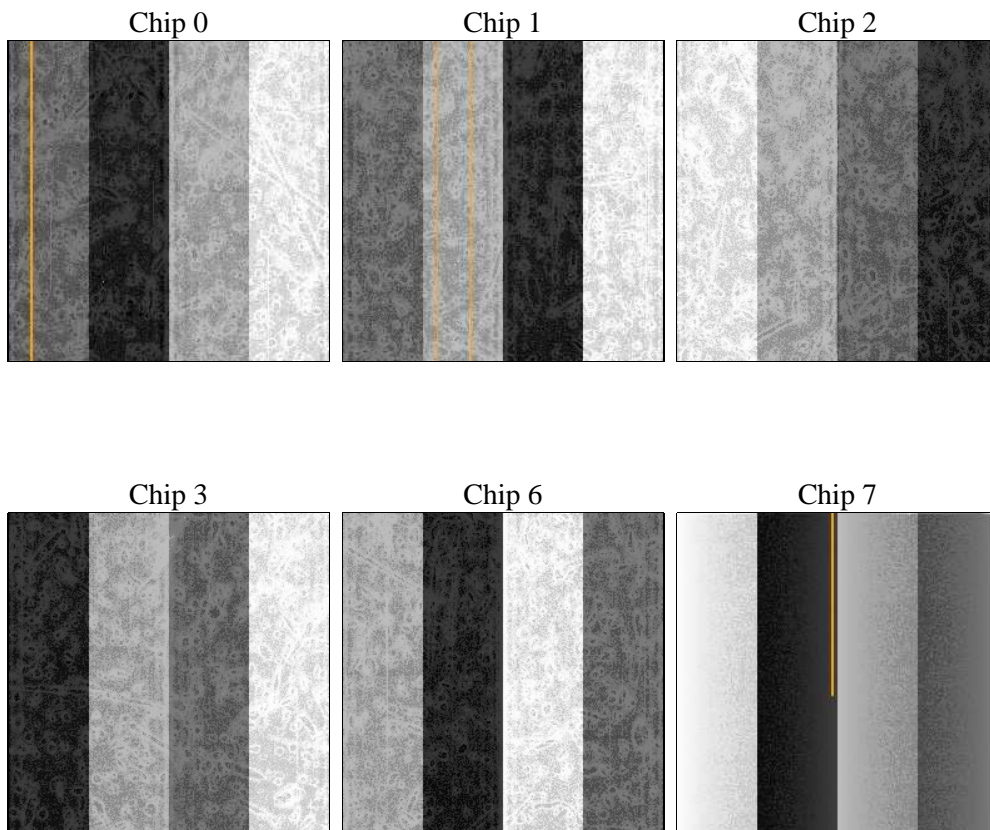
## 2 OBI

### 2.1 OBI

#### 2.1.1 Images



#### 2.1.2 Bias



### 2.1.3 Parameters

obi_num	0	Obi number	sched_exp_time	0.0	[s] Scheduled observation exposure time
ascdsver	8.4.5	Processing system revision	ontime	7622.400007084	Sum of GTIs [s]
caldbver	4.5.2	&#160	ontime0	2958.6335768998	Sum of GTIs [s]
date	2012-09-30T06:06:41	Date and time of file creation	ontime1	3062.138887316	Sum of GTIs [s]
revision	3	Processing version of data	ontime2	2841.7904930413	Sum of GTIs [s]
			ontime3	2903.2056545764	Sum of GTIs [s]
			ontime6	3185.5053298175	Sum of GTIs [s]
			ontime7	7622.400007084	Sum of GTIs [s]
			l1events	1415057	Number of level 1 events

### 2.1.4 Events

	ccd 0	ccd 1	ccd 2	ccd 3	ccd 6	ccd 7		ccd 0	ccd 1	ccd 2	ccd 3	ccd 6	ccd 7
level 1 events	183429	188190	180250	183614	205648	473926	grade 0 events	89171	92284	88023	90040	100222	110809
rejected events	21302	21548	22783	22799	23134	39672		48%	49%	48%	49%	48%	23%
rejected %	11%	11%	12%	12%	11%	8%	grade 1 events	454	428	418	468	450	301
								0%	0%	0%	0%	0%	0%
							grade 2 events	28782	29479	27657	28317	31536	96706
								15%	15%	15%	15%	15%	20%
							grade 3 events	10182	10375	9769	10159	11193	43937
								5%	5%	5%	5%	5%	9%
							grade 4 events	10323	10500	9660	10050	11167	43504
								5%	5%	5%	5%	5%	9%
							grade 5 events	1446	1521	1469	1627	1661	8141
								0%	0%	0%	0%	0%	1%
							grade 6 events	23833	24004	22358	22249	28607	139480
								12%	12%	12%	12%	13%	29%
							grade 7 events	19238	19599	20896	20704	20812	31048
								10%	10%	11%	11%	10%	6%

## 2.2 Compared Parameters

Parameter	Planned	Actual	Parameter	Planned	Actual
Instrument	ACIS	ACIS	Obspar format version number	7	7
Detector	ACIS-012367	ACIS-012367	Obspar file type	PREDICTED	ACTUAL
Grating	NONE	NONE	Obspar update status	NONE	UPDATED
Data mode	FAINT	FAINT	On-chip summing requested	N	N
Observation mode	SECONDARY	SECONDARY	Subarray requested	NONE	NONE
[deg] Pointing RA	0	352.0229571254381	Alternating exposures requested	N	N
[deg] Pointing Dec	0	-11.51773491622116	[s] Primary exposure time	0.000000	3.2
[deg] Pointing Roll	0.0	288.9629294027266			
[mm] SIM focus pos	-0.782348	-0.6828225247311905			
[mm] SIM defocus	0	0.8505141146731063			
[mm] SIM translation stage pos	-233.592463	250.466033080201			
[mm] SIM translation stage offset	0	-0.01005468664627074			
[s] Observation start time (MET)	127020625.725	127020624.9561			
Observation start date	2002-01-10T03:30:26	2002-01-10T03:30:24			
[s] Observation end time (MET)	127041519.325	127041518.55694			
Observation end date	2002-01-10T09:18:39	2002-01-10T09:18:38			
Read mode	TIMED	TIMED			

**2.3 Star Slots**

**2.4 FID Slots**

# A Summary

## A.1 Status

V&V Scientist	Jen Lauer
V&V Date (YYYY-MM-DD)	2012.10.02
V&V Edition	1
V&V Disposition and Status	OK
V&V Charge Time	7.622400007084

## A.2 Comments