

V&V Reference Report

L2 ASCDS Version : 8.5.1.1

Observation 6165 - L2 Version 3
Chandra X-Ray Center

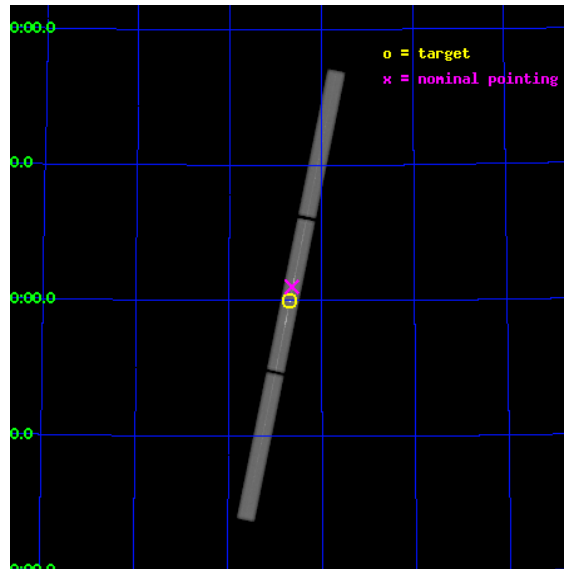
L2 Processing Date : Dec 30 2012

Contents

1	Front	2
2	OBI	3
2.1	OBI	3
2.1.1	Images	3
2.1.2	Parameters	4
2.1.3	Events	4
2.2	Compared Parameters	5
2.3	Aspect	6
2.4	Star Slots	9
2.4.1	Slot 3	9
2.4.2	Slot 4	10
2.4.3	Slot 5	11
2.4.4	Slot 6	12
2.4.5	Slot 7	13
2.5	FID Slots	14
2.5.1	Slot 0	14
2.5.2	Slot 1	15
2.5.3	Slot 2	16
3	Gratings	17
3.1	LETG Arm	17
A	Summary	19
A.1	Status	19
A.2	Comments	19

1 Front

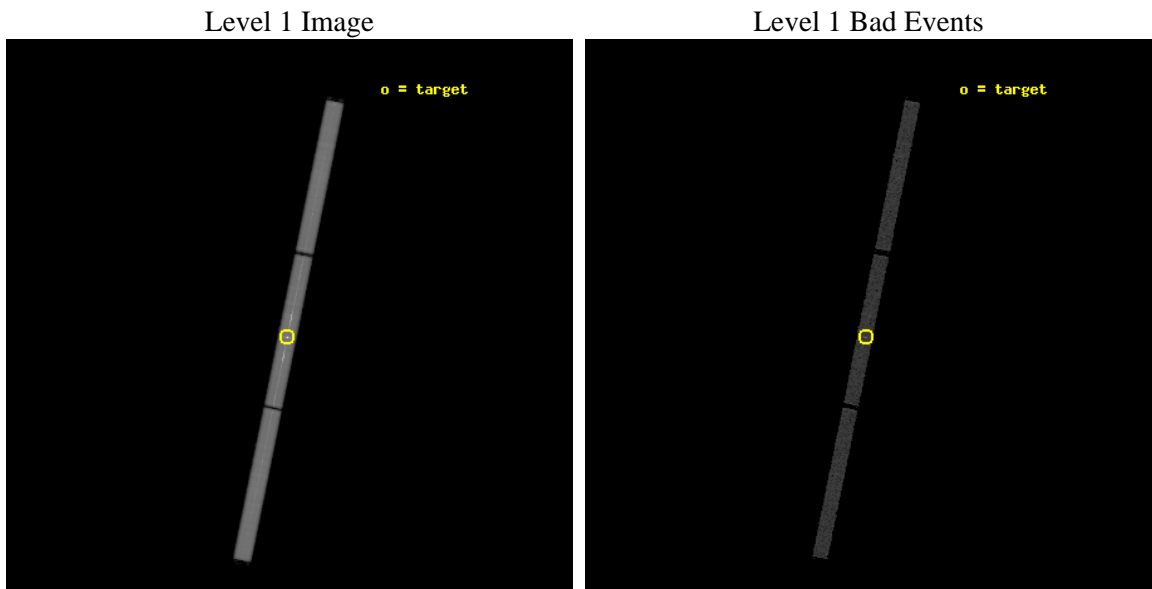
seq_num	290537	Sequence number
obs_id	6165	Observation id
title	AO6 Calibration Observations of Capella	Proposal title
observer	Dr. CXC Calibration	Principal investigator
object	Capella	Source name
ra_targ	79.17625	Observer's specified target RA [deg]
dec_targ	45.997889	Observer's specified target Dec [deg]
ra_nom	79.160766966844	Nominal RA [deg]
dec_nom	46.051471763749	Nominal Dec [deg]
roll_nom	101.53126795322	Nominal Roll [deg]
revision	3	Processing version of data
ontime	29172.782592446	[s]
livedtime	28936.419901637	Ontime multiplied by DTCOR
l2events	2091016	Number of level 2 events



2 OBI

2.1 OBI

2.1.1 Images



2.1.2 Parameters

obi_num	0	Obi number	sched_exp_time	29000.000000	[s] Scheduled observation exposure time
ascdsver	8.5.1.1	Processing system revision	ontime	29172.782592446	[s]
caldbver	4.5.5	 	l1events	2794110	Number of level 1 events
date	2012-12-30T04:07:58	Date and time of file creation			
revision	3	Processing version of data			

2.1.3 Events

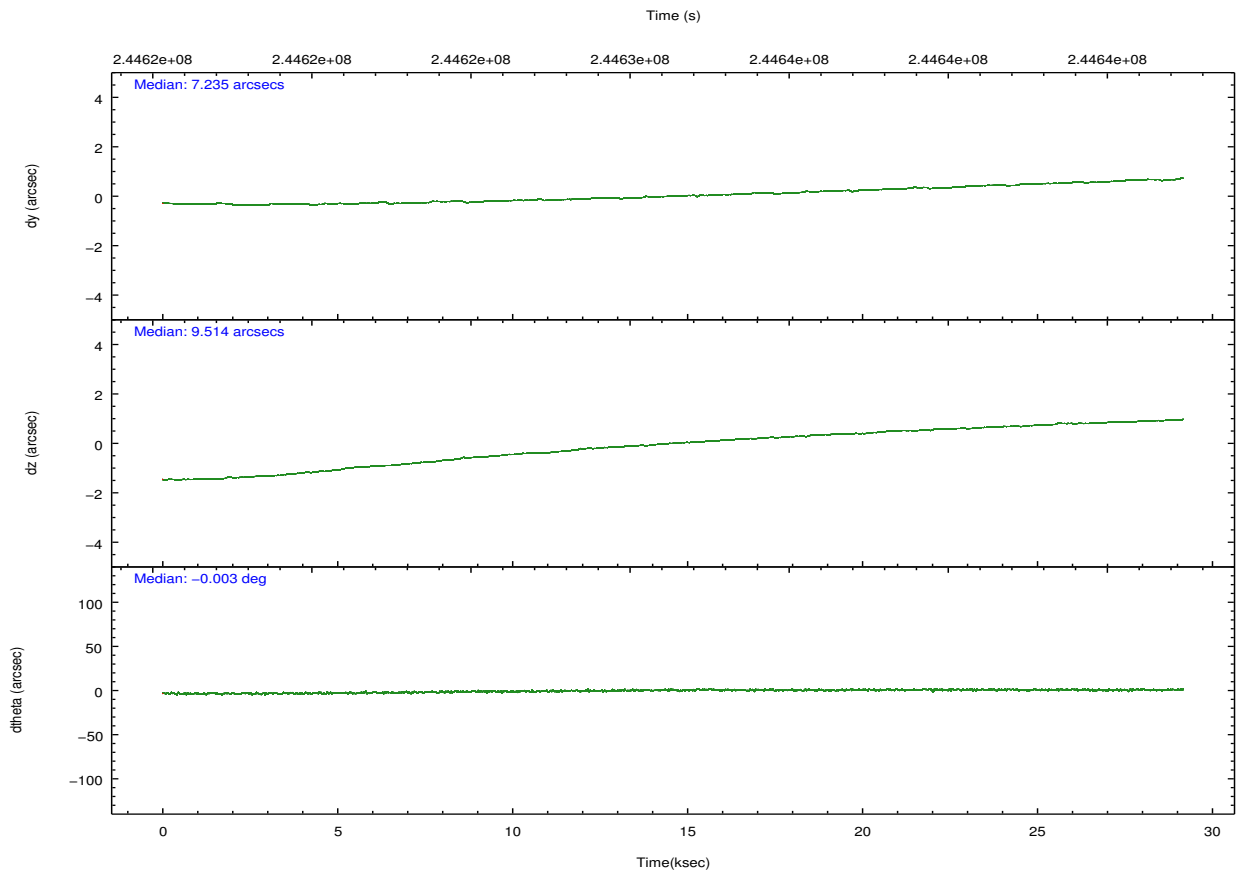
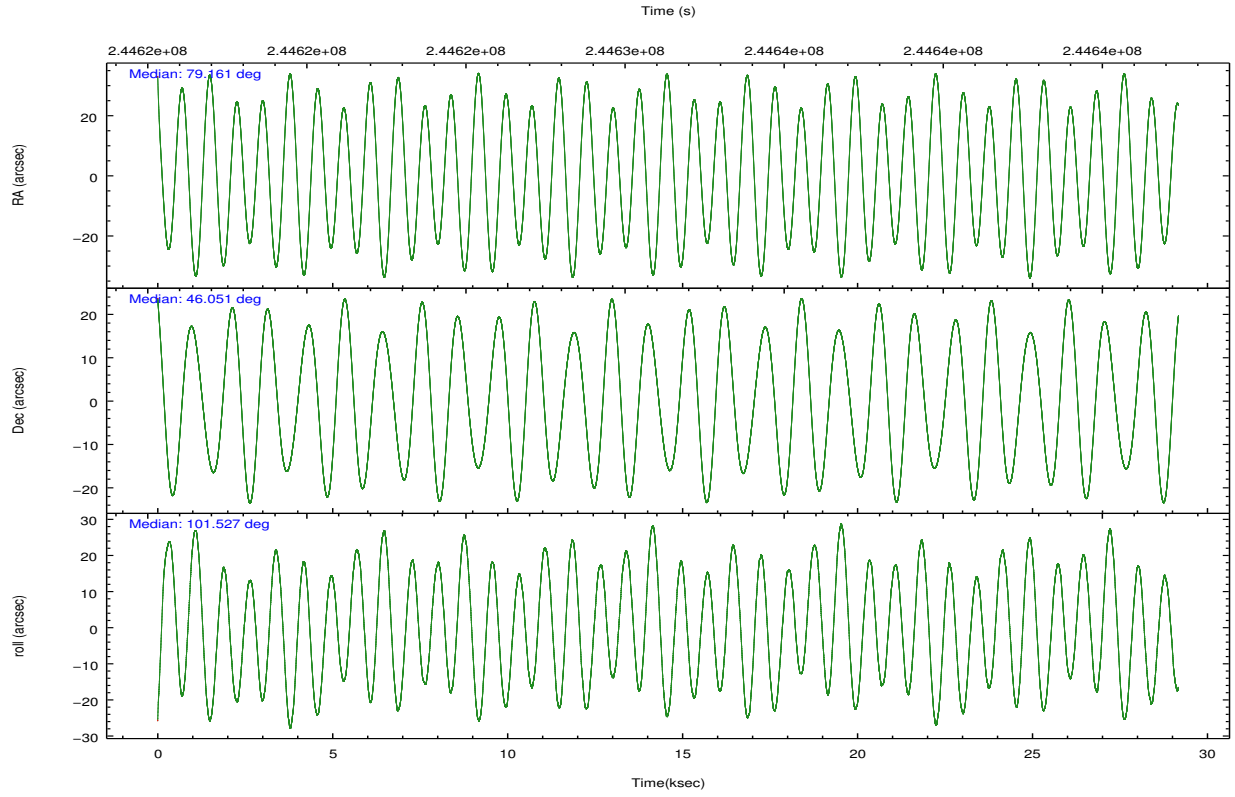
Level 1 Events

	segment 1	segment 2	segment 3
level 1 events	882891	1045948	865271
rejected events	37809	38117	37186
rejected %	4%	3%	4%

2.2 Compared Parameters

Parameter	Planned	Actual	Parameter	Planned	Actual
Instrument	HRC	HRC	Obspar format version number	7	7
Detector	HRC-S	HRC-S	Obspar file type	PREDICTED	ACTUAL
Grating	LETG	LETG	Obspar update status	NONE	UPDATED
Data mode	OBSERVING	OBSERVING			
Observation mode	POINTING	POINTING			
[deg] Pointing RA	79.189603	79.16076696684409			
[deg] Pointing Dec	46.031056	46.05147176374864			
[deg] Pointing Roll	101.443171	101.5312679532201			
[s] Window start time (MET)	244512064.184000	244512064.184000			
[s] Window stop time (MET)	257472065.184000	257472065.184000			
[mm] SIM focus pos	-1.429586	-1.428180813131781			
[mm] SIM defocus	0.1037507710433287	0.1051558262725154			
[mm] SIM translation stage pos	250.455976	250.4635187648994			
[mm] SIM translation stage offset	0	-0.007540371344731511			
[s] Observation start time (MET)	244616940.184000	244616046.42878			
Observation start date	2005-10-02T05:07:56	2005-10-02T04:54:06			
[s] Observation end time (MET)	244645940.184000	244646661.64268			
Observation end date	2005-10-02T13:11:16	2005-10-02T13:24:21			

2.3 Aspect

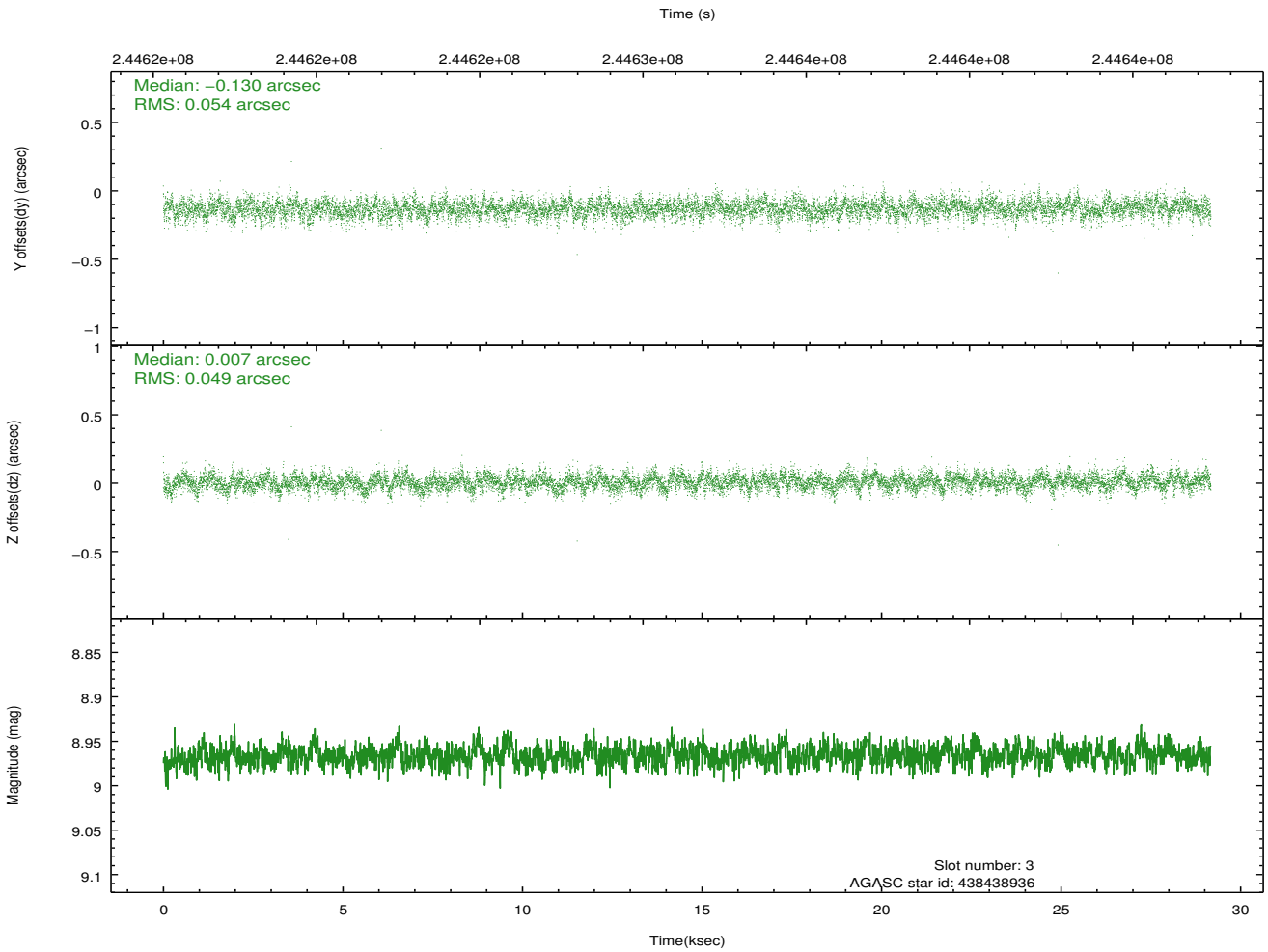
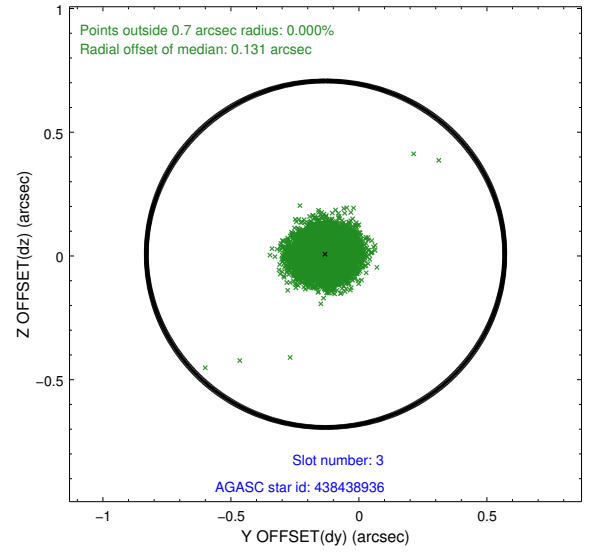
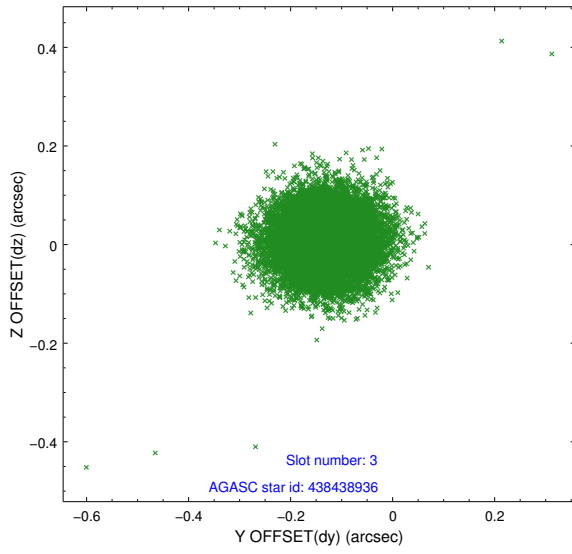


Slot Statistics

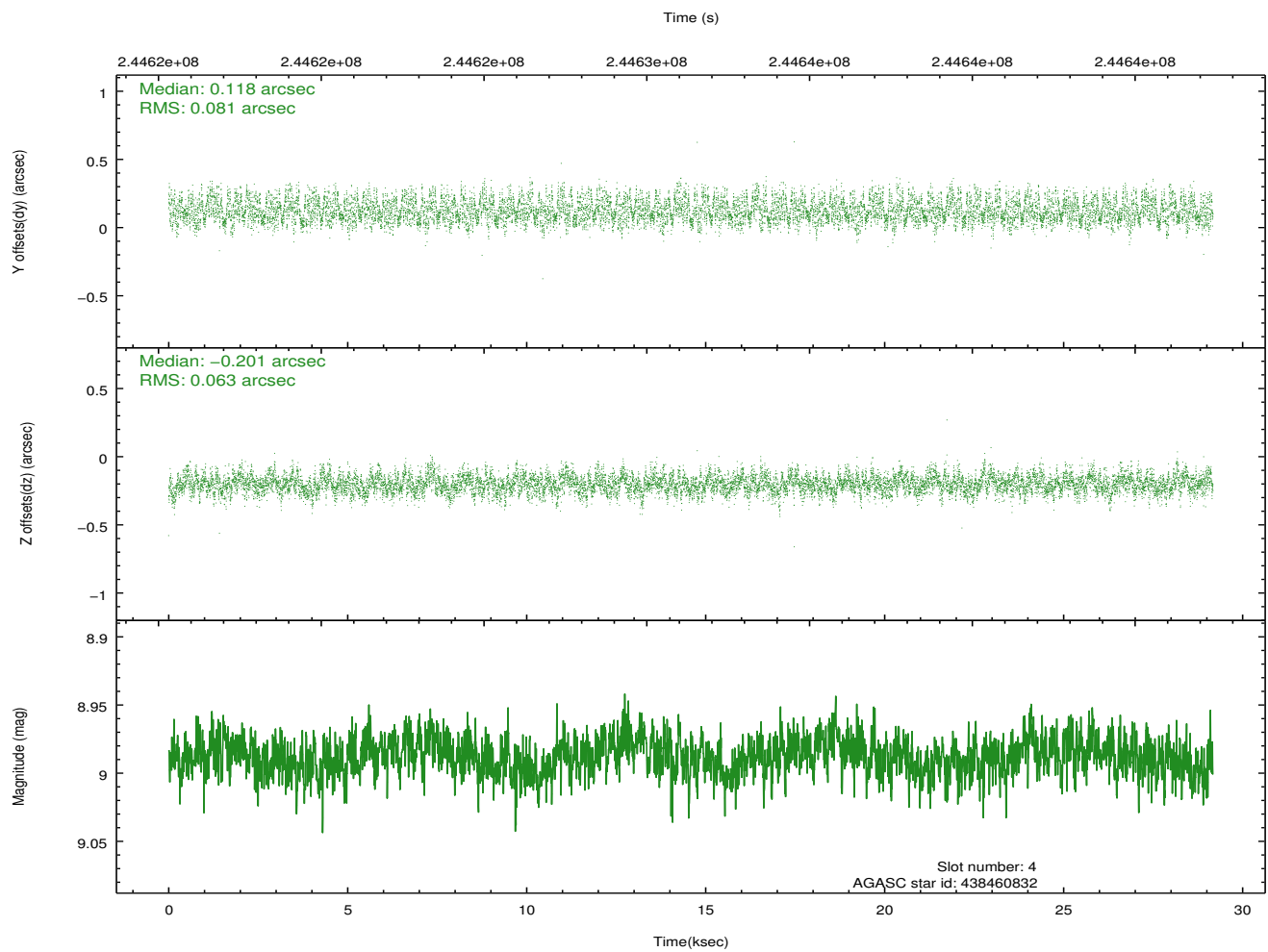
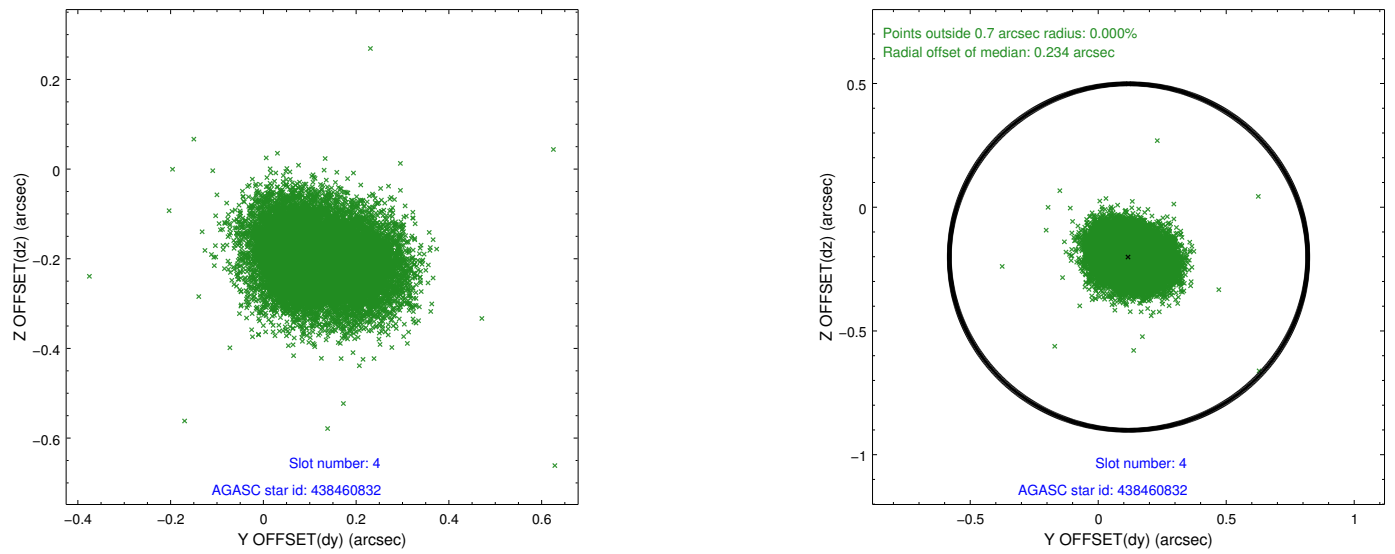
slot	status	id	mag	n_pts	med_dy	med_dz	dr1	dr2	ra	dec	mean_y	mean_z
0	FID	HRC-S-1	7.03	7115	0.130	-0.188	0.024	0.061	0.000000	0.000000	-1161.45	-458.01
1	FID	HRC-S-2	7.03	7116	0.177	-0.121	0.007	0.010	0.000000	0.000000	1238.11	-450.67
2	FID	HRC-S-3	7.04	7116	0.083	0.007	0.026	0.067	0.000000	0.000000	-1164.04	571.63
3	GUIDE	438438936	8.97	14230	-0.130	0.007	0.076	0.125	78.241026	46.550197	2311.47	1928.49
4	GUIDE	438460832	8.99	14224	0.118	-0.201	0.109	0.174	78.414614	45.554782	-1283.49	2252.90
5	GUIDE	440149808	8.47	14225	-0.057	-0.019	0.068	0.109	78.873930	46.405955	1479.87	500.25
6	GUIDE	440163960	8.89	14223	0.055	0.286	0.085	0.141	79.298370	45.827072	-773.21	-121.60
7	GUIDE	440164960	8.29	14192	0.008	-0.069	0.072	0.119	79.132526	46.140947	415.96	61.00

2.4 Star Slots

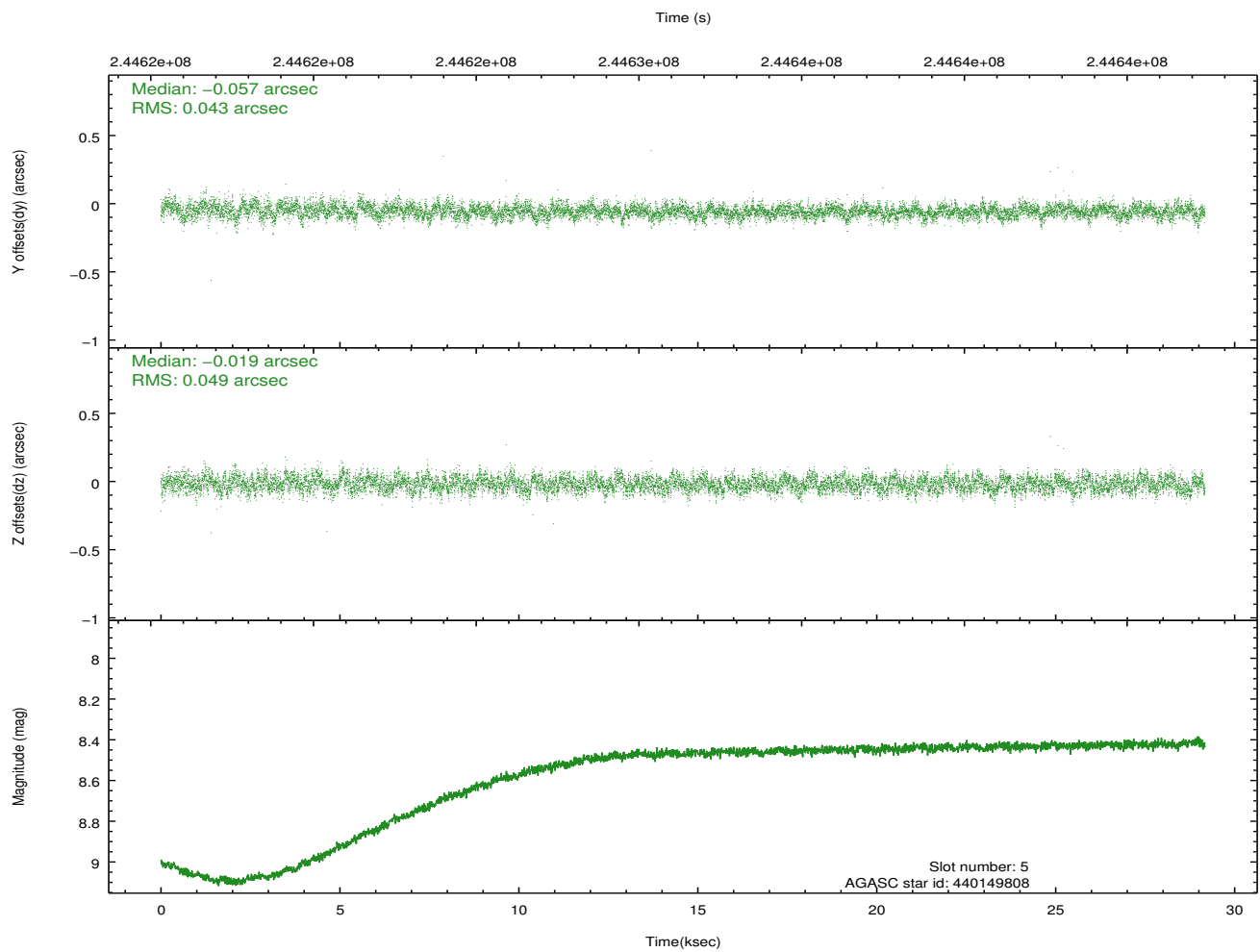
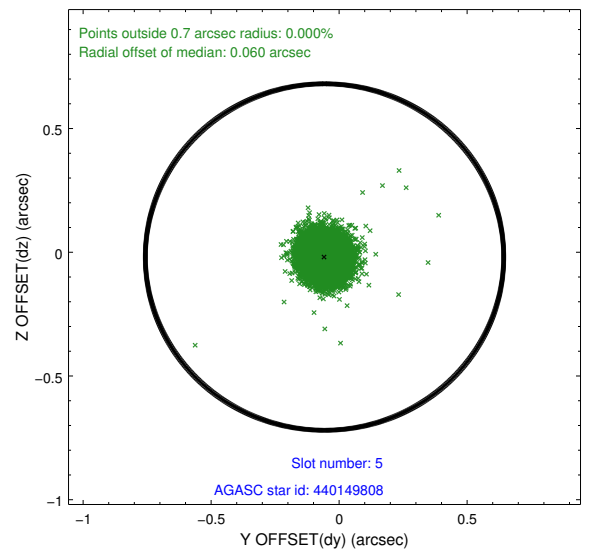
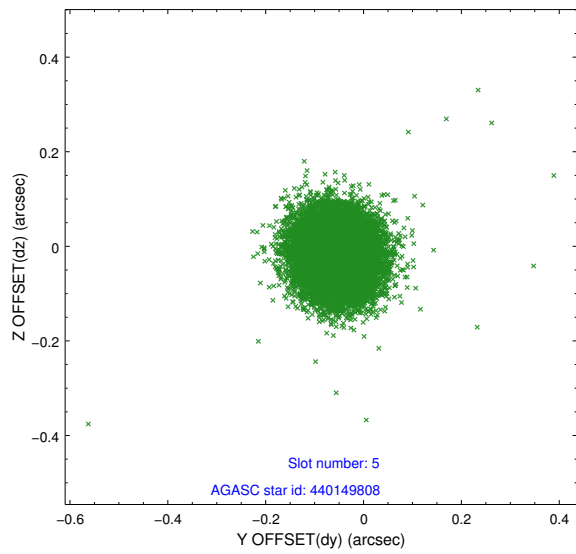
2.4.1 Slot 3



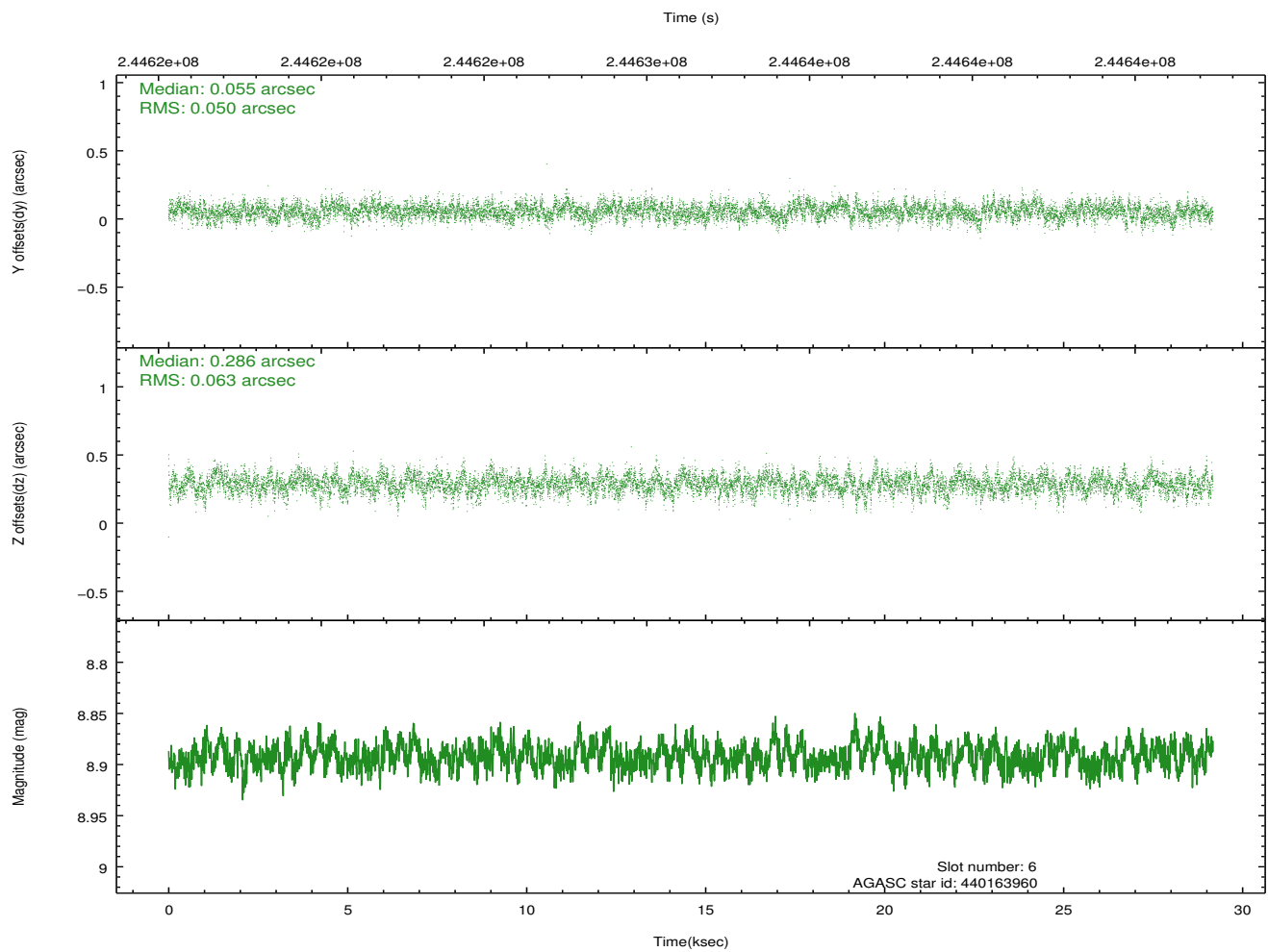
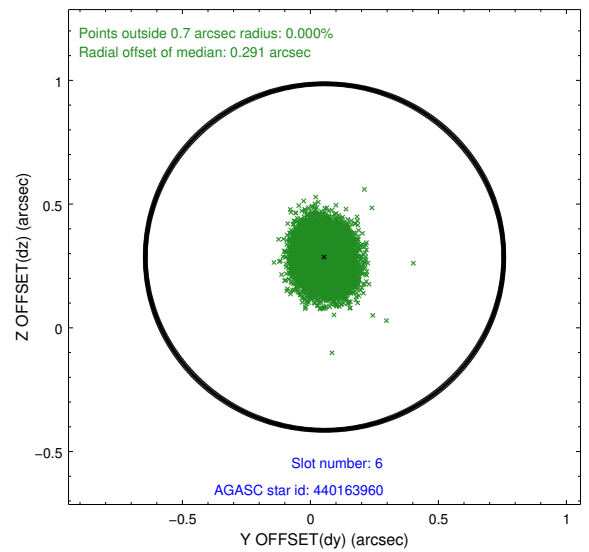
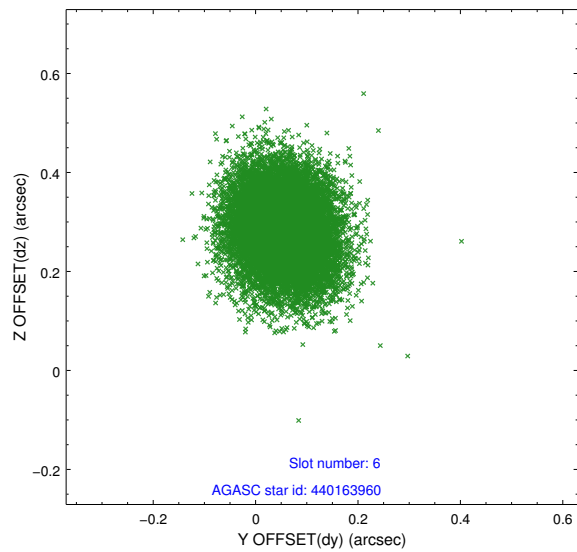
2.4.2 Slot 4



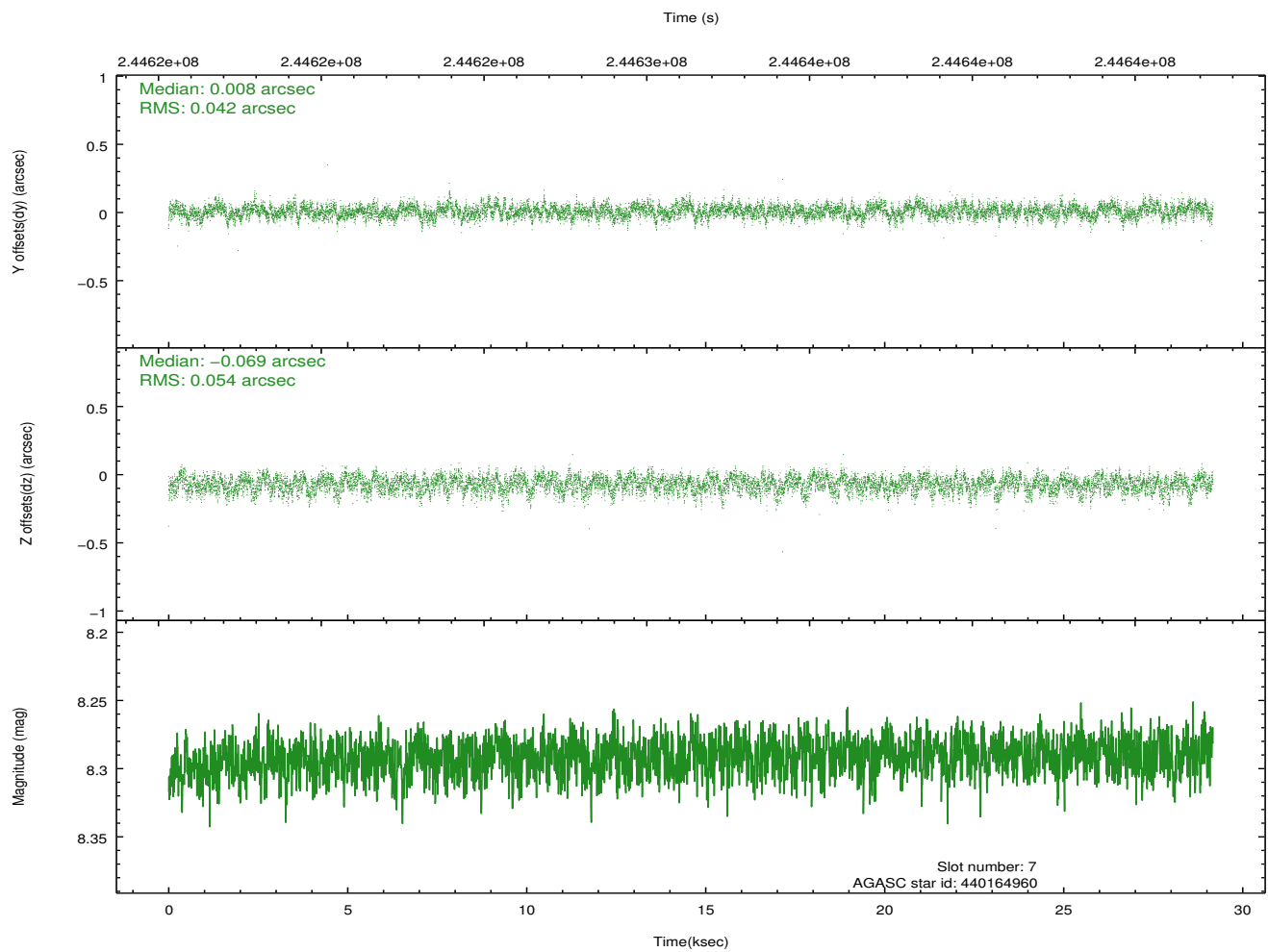
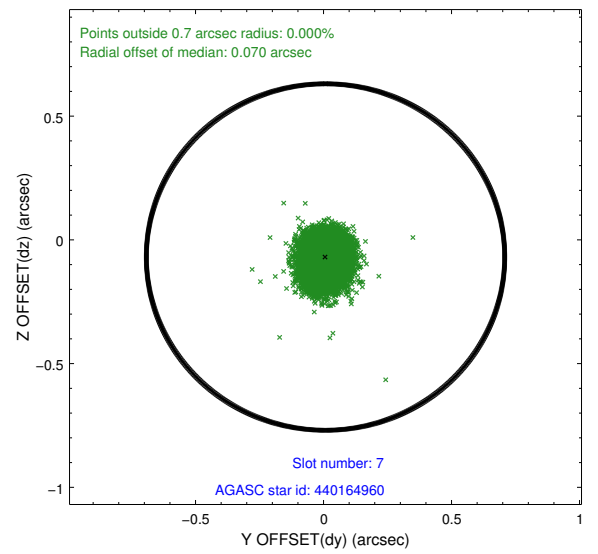
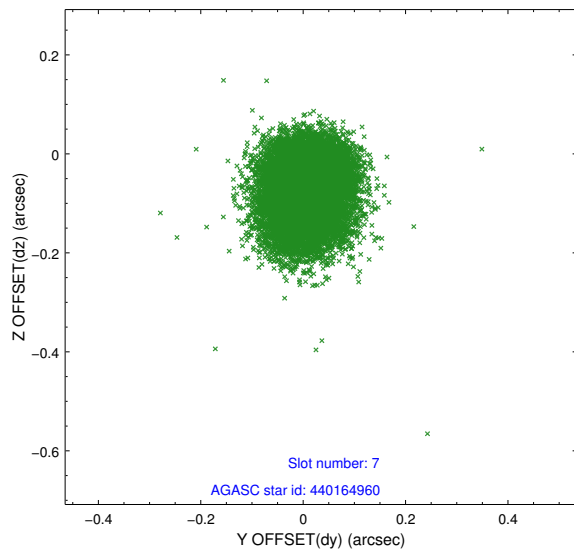
2.4.3 Slot 5



2.4.4 Slot 6

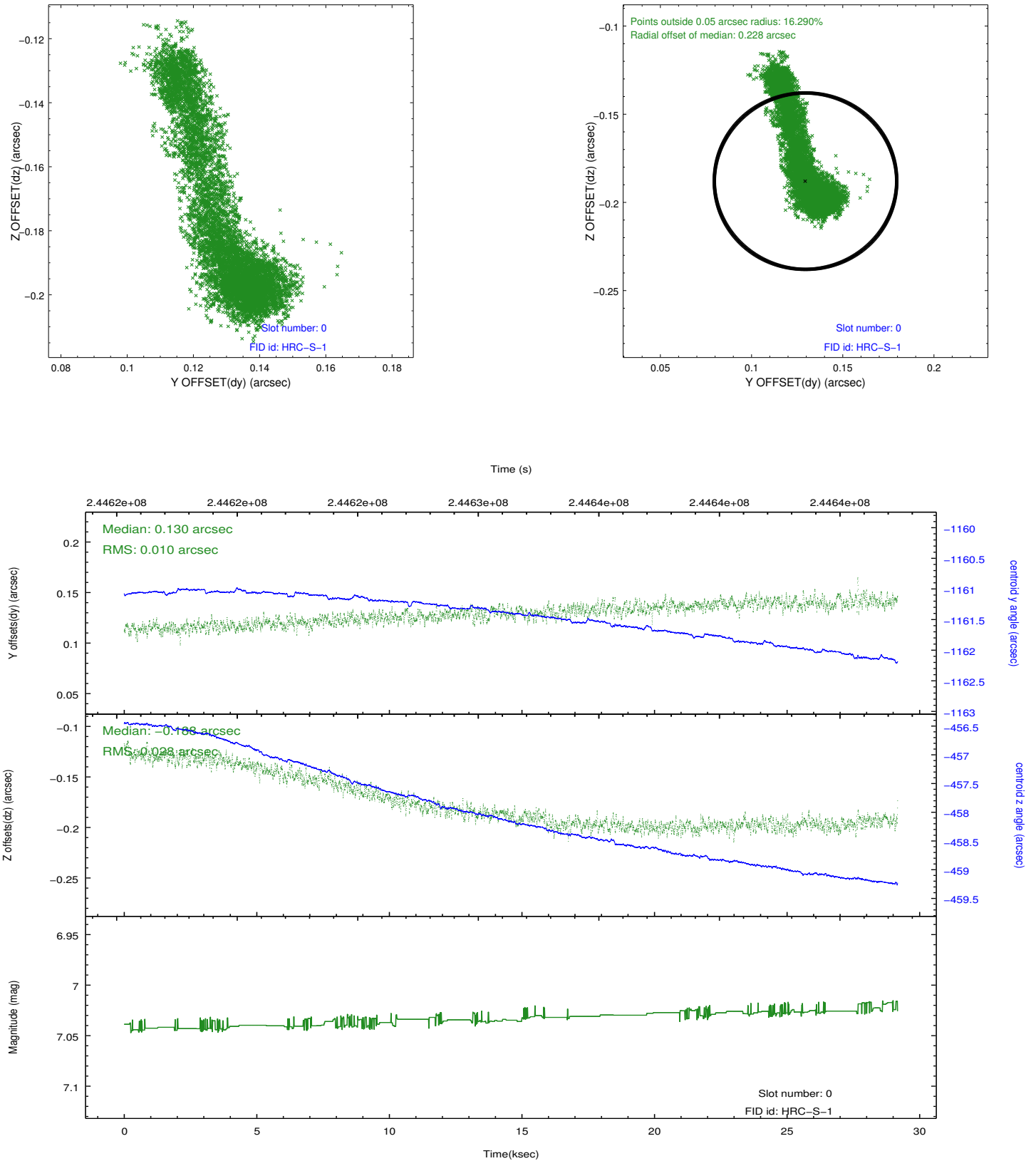


2.4.5 Slot 7

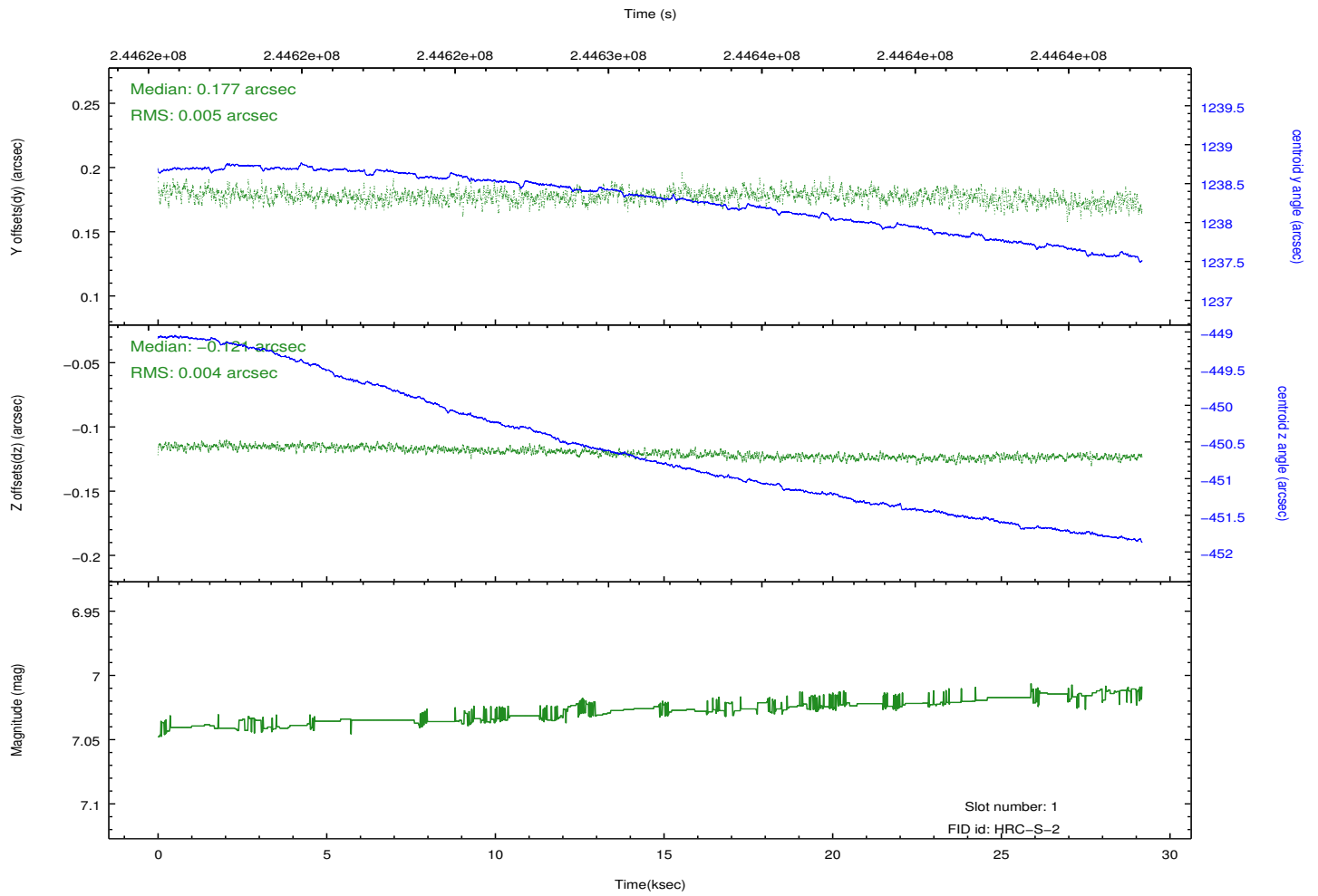
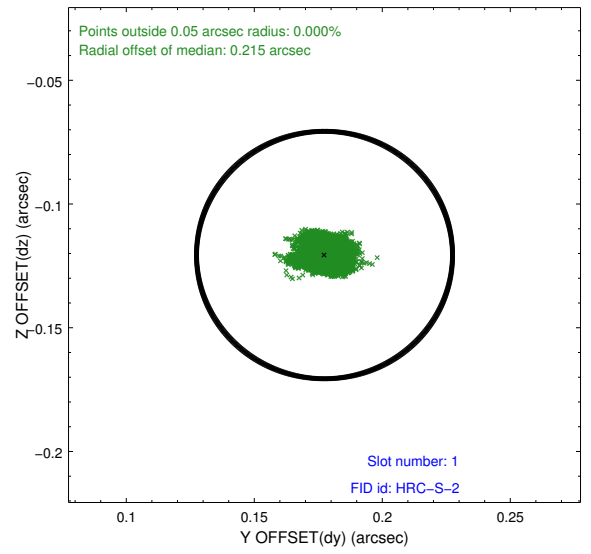
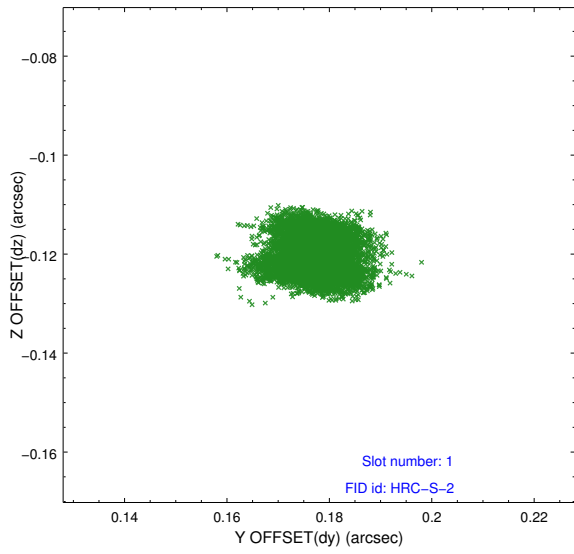


2.5 FID Slots

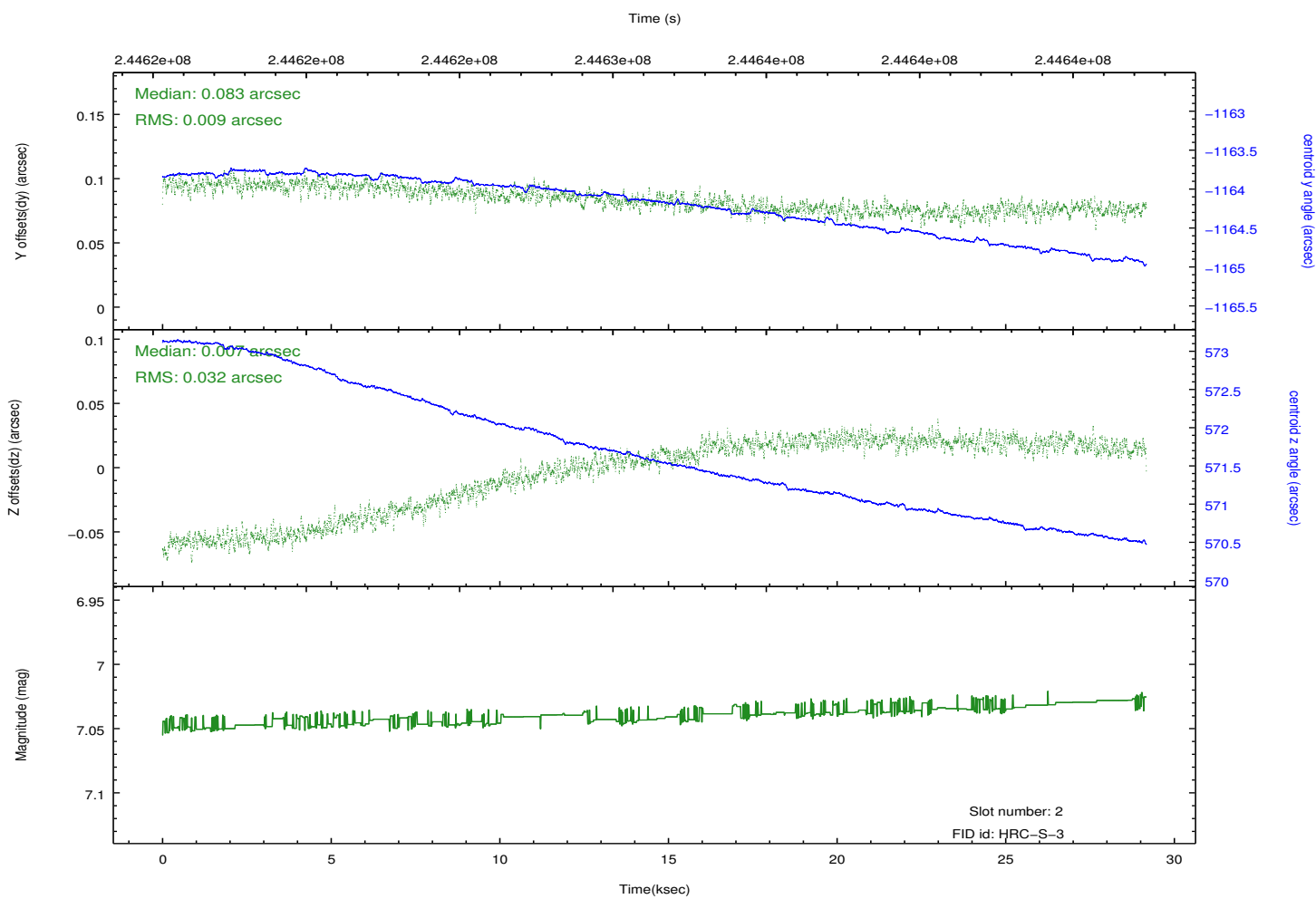
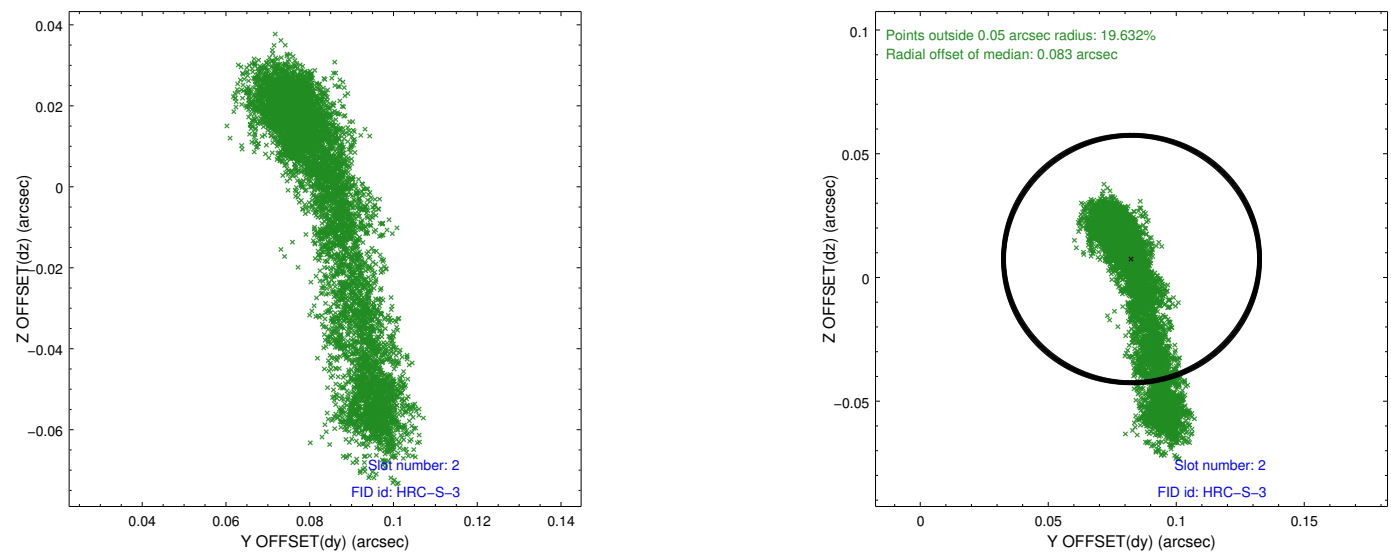
2.5.1 Slot 0



2.5.2 Slot 1

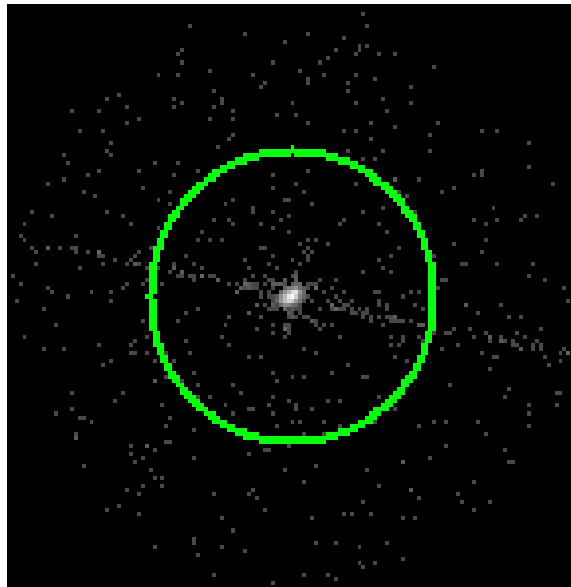


2.5.3 Slot 2

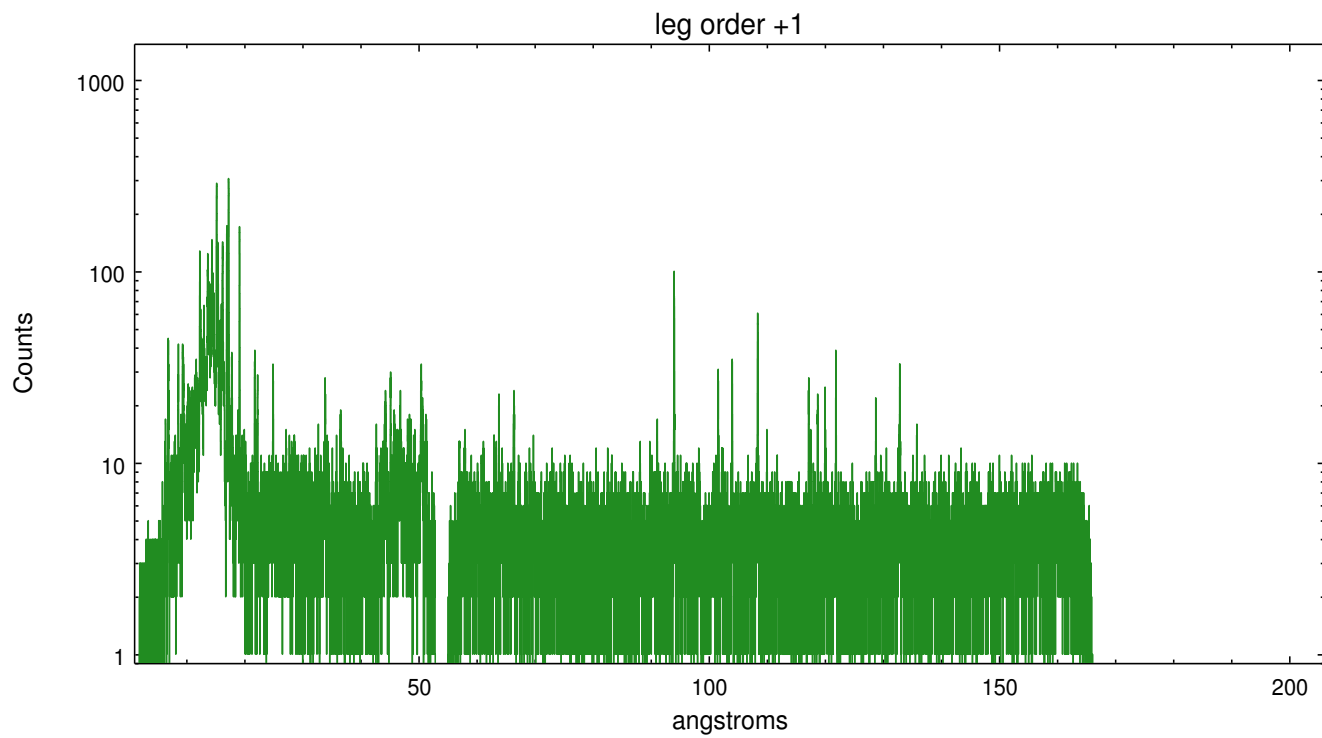
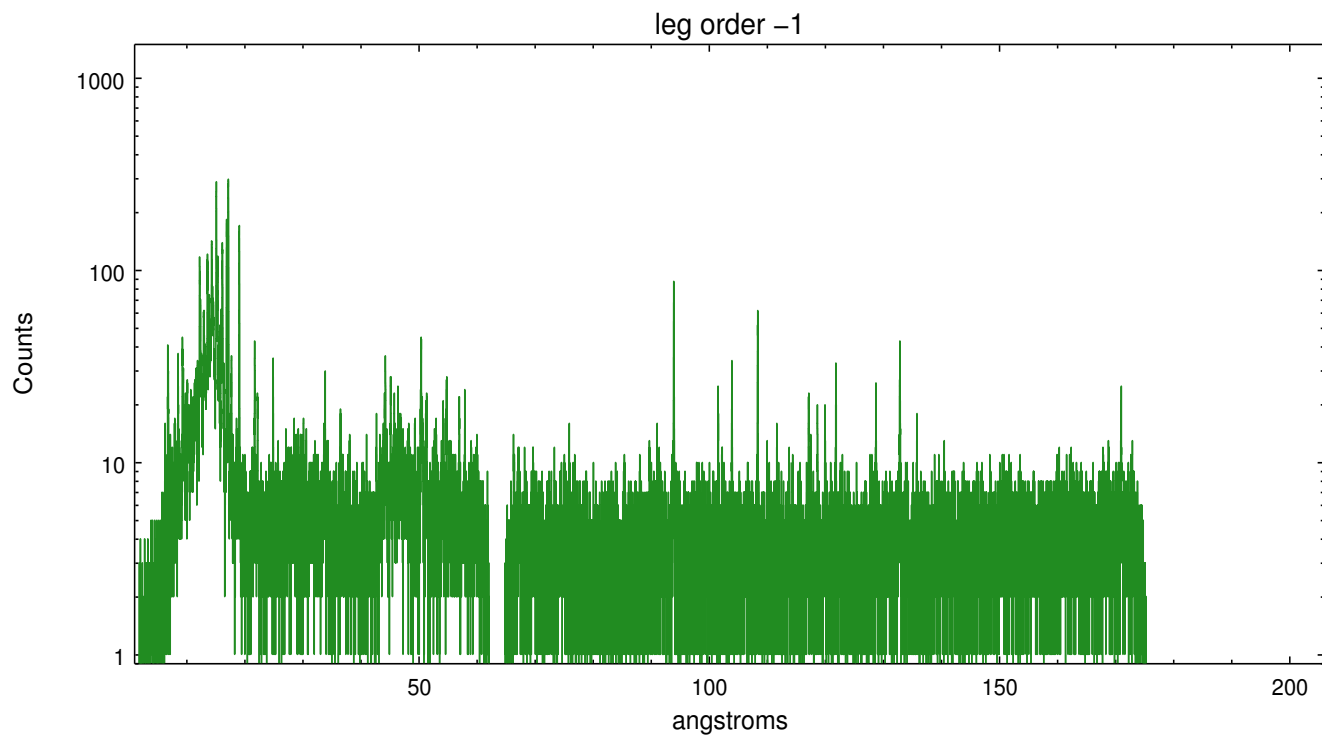


3 Gratings

3.1 LETG Arm



LETG Zero Order



A Summary

A.1 Status

V&V Scientist	Joy Nichols
V&V Date (YYYY-MM-DD)	2013.01.24
V&V Edition	1
V&V Disposition and Status	OK
V&V Charge Time	29.17278

A.2 Comments