

V&V Reference Report

L2 ASCDS Version : 8.5.1

Observation 6225 - L2 Version 3
Chandra X-Ray Center

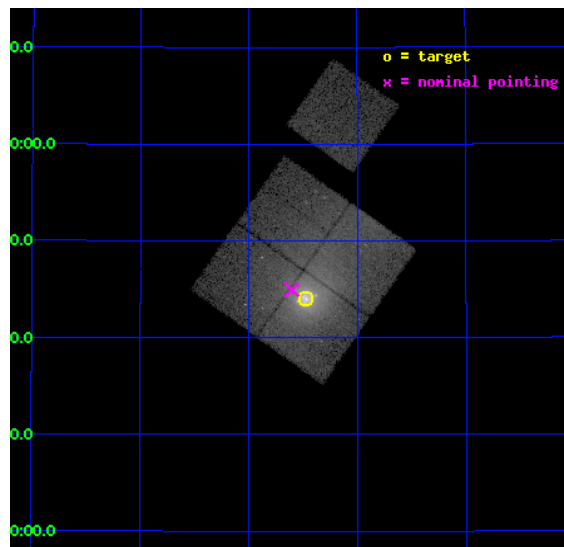
L2 Processing Date : Dec 17 2012

Contents

1	Front	2
2	OBI	3
2.1	OBI	3
2.1.1	Images	3
2.1.2	Bias	3
2.1.3	Parameters	4
2.1.4	Events	4
2.2	Compared Parameters	5
2.3	Aspect	6
2.4	Star Slots	9
2.4.1	Slot 3	9
2.4.2	Slot 4	10
2.4.3	Slot 5	11
2.4.4	Slot 6	12
2.4.5	Slot 7	13
2.5	FID Slots	14
2.5.1	Slot 0	14
2.5.2	Slot 1	15
2.5.3	Slot 2	16
A	Summary	17
A.1	Status	17
A.2	Comments	17

1 Front

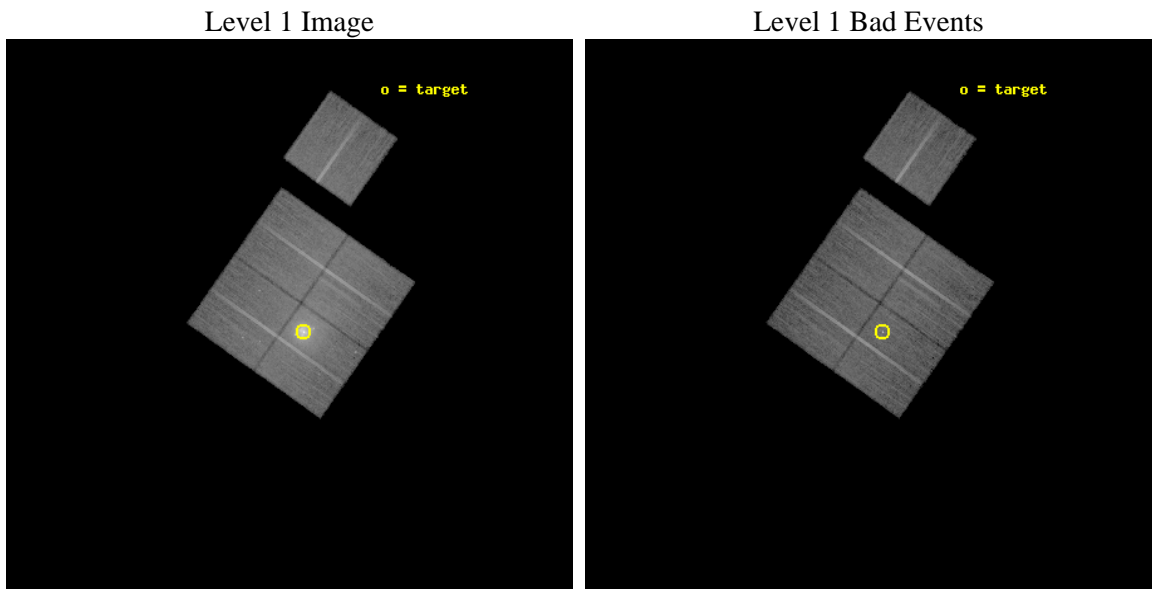
seq_num	800540	Sequence number
obs_id	6225	Observation id
title	Cygnus A --- Shock Heating of the Intra-Cluster Medium	Proposal ti
observer	Dr Andrew Young	Principal investigator
object	Cygnus A	Source name
dtcycle	0	
cycle	P	events from which exps? Prim/Second/Both
ra_targ	299.867917	Observer's specified target RA [deg]
dec_targ	40.733889	Observer's specified target Dec [deg]
ra_nom	299.90093489396	Nominal RA [deg]
dec_nom	40.749197828643	Nominal Dec [deg]
roll_nom	35.18714216533	Nominal Roll [deg]
revision	3	Processing version of data
ontime	24629.37705183	Sum of GTIs [s]
livetime	24307.576108765	Livetime [s]
ontime0	24635.658982366	Sum of GTIs [s]
ontime1	24629.37705183	Sum of GTIs [s]
ontime2	24638.799952596	Sum of GTIs [s]
ontime3	24635.658962429	Sum of GTIs [s]
ontime6	24632.518002182	Sum of GTIs [s]
l2events	223873	Number of level 2 events



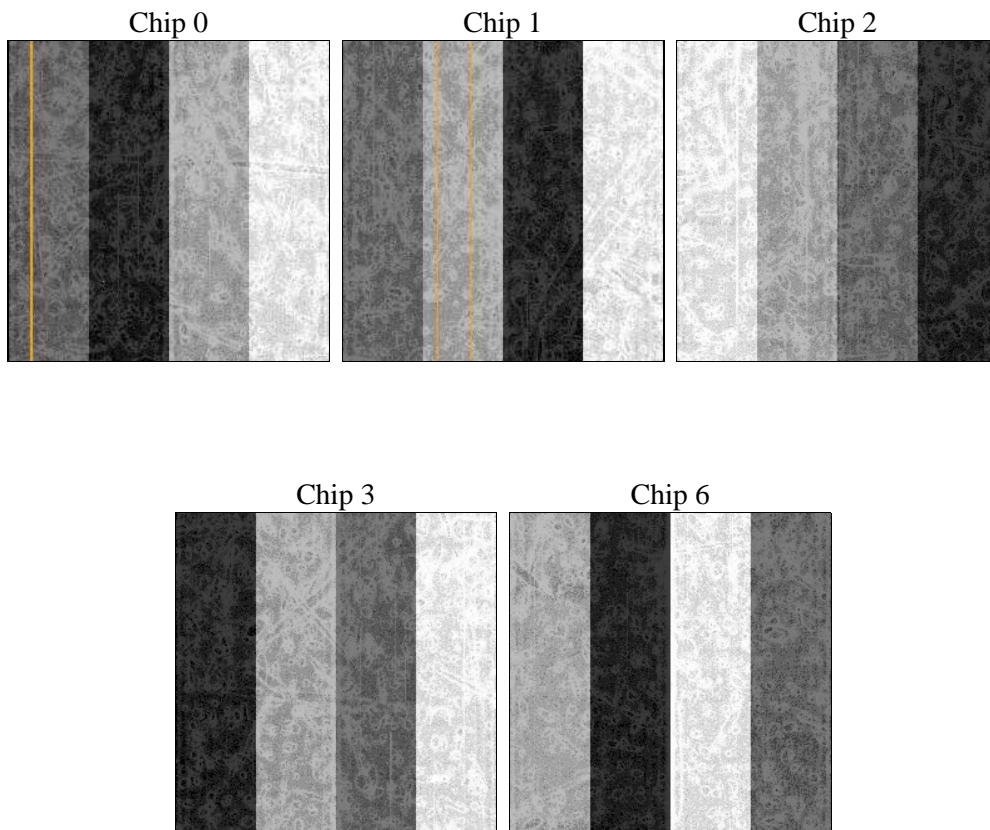
2 OBI

2.1 OBI

2.1.1 Images



2.1.2 Bias



2.1.3 Parameters

obi_num	0	Obi number	sched_exp_time	24500.000000	[s] Scheduled observation exposure time
ascdsver	8.5.1	Processing system revision	ontime	24629.37705183	Sum of GTIs [s]
caldbver	4.5.5	 	ontime0	24635.658982366	Sum of GTIs [s]
date	2012-12-17T17:13:43	Date and time of file creation	ontime1	24629.37705183	Sum of GTIs [s]
revision	3	Processing version of data	ontime2	24638.799952596	Sum of GTIs [s]
			ontime3	24635.658962429	Sum of GTIs [s]
			ontime6	24632.518002182	Sum of GTIs [s]
			l1events	963353	Number of level 1 events

2.1.4 Events

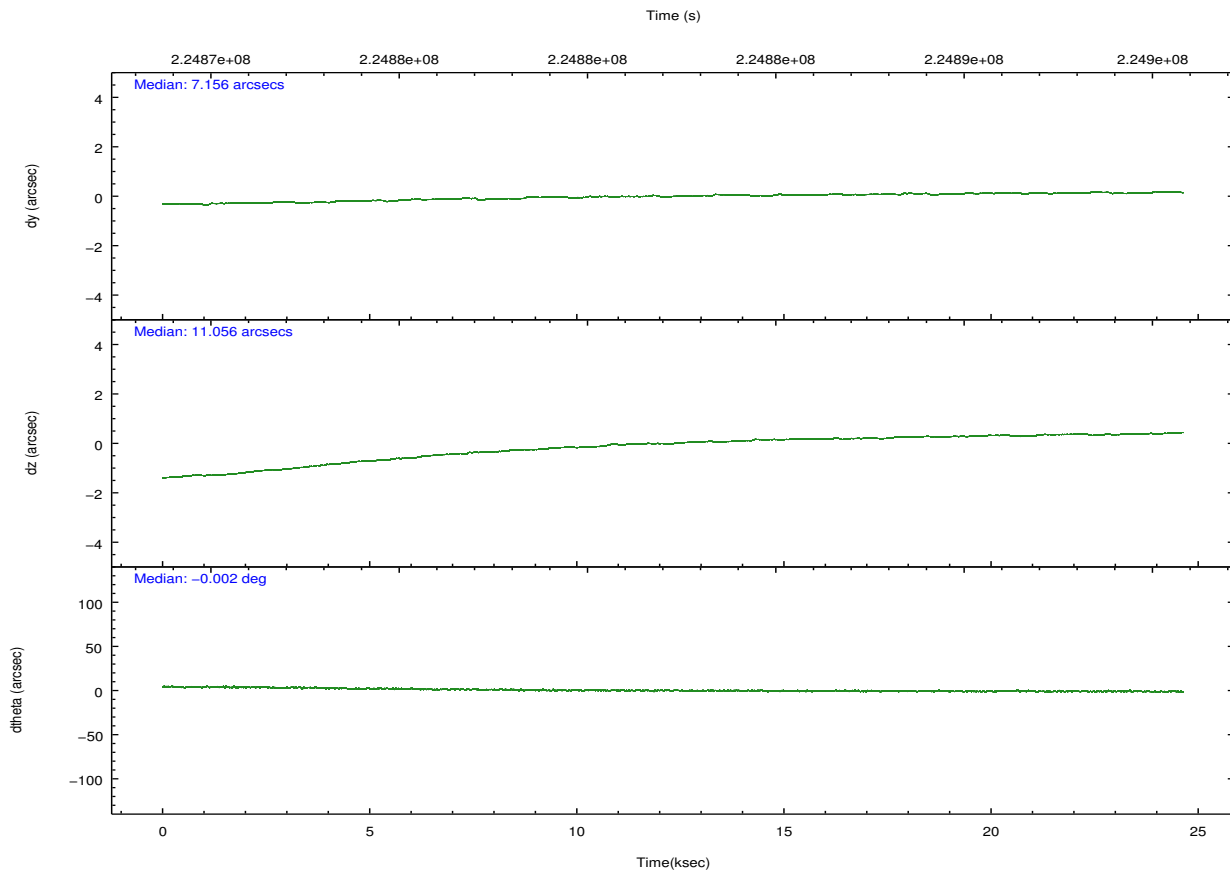
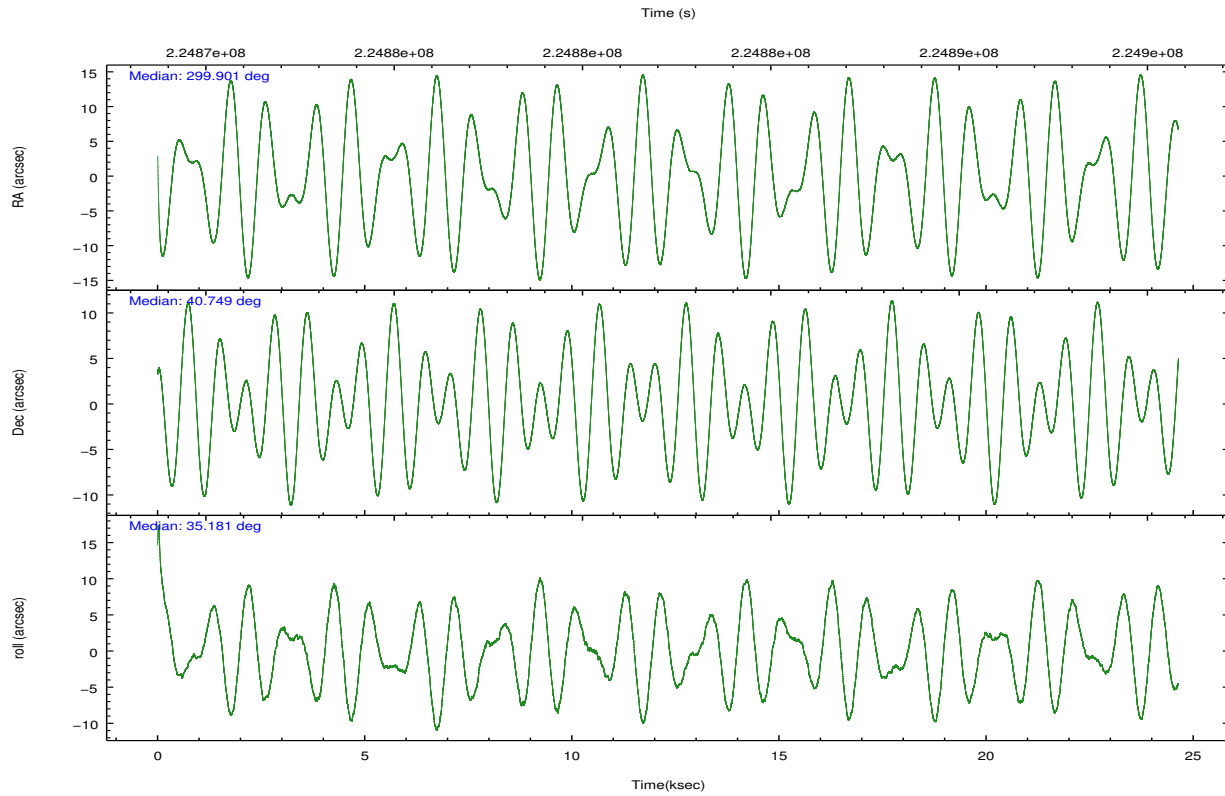
	ccd 0	ccd 1	ccd 2	ccd 3	ccd 6
level 1 events	163853	269308	180486	188058	161648
rejected events	134346	140310	151509	146274	144619
rejected %	81%	52%	83%	77%	89%

	ccd 0	ccd 1	ccd 2	ccd 3	ccd 6
grade 0 events	17150	94369	16997	27555	7103
	10%	35%	9%	14%	4%
grade 1 events	146	822	144	228	77
	0%	0%	0%	0%	0%
grade 2 events	5386	16776	5269	6229	3637
	3%	6%	2%	3%	2%
grade 3 events	2311	5810	2172	2625	1812
	1%	2%	1%	1%	1%
grade 4 events	2219	5904	2197	2598	1879
	1%	2%	1%	1%	1%
grade 5 events	5850	6928	5419	6450	6232
	3%	2%	3%	3%	3%
grade 6 events	3690	8020	3428	3820	3587
	2%	2%	1%	2%	2%
grade 7 events	127101	130679	144860	138553	137321
	77%	48%	80%	73%	84%

2.2 Compared Parameters

Parameter	Planned	Actual	Parameter	Planned	Actual
Instrument	ACIS	ACIS	Obspar format version number	7	7
Detector	ACIS-01236	ACIS-01236	Obspar file type	PREDICTED	ACTUAL
Grating	NONE	NONE	Obspar update status	NONE	UPDATED
Data mode	VFAINT	VFAINT	Number of optional ACIS chips dropped	0	0
Observation mode	POINTING	POINTING	On-chip summing requested	N	N
[deg] Pointing RA	299.885900	299.9009348939607	Subarray requested	NONE	NONE
[deg] Pointing Dec	40.724309	40.74919782864333	Alternating exposures requested	N	N
[deg] Pointing Roll	34.988265	35.18714216532992	[s] Primary exposure time	0.000000	3.1
[mm] SIM focus pos	-0.782348	-0.7809083437167272			
[mm] SIM defocus	0	0.001439871863259334			
[mm] SIM translation stage pos	-242.392463	-242.3975952774949			
[mm] SIM translation stage offset	8.800000000000001	8.805142274565242			
[s] Observation start time (MET)	224870098.184000	224868369.39007			
Observation start date	2005-02-15T15:53:54	2005-02-15T15:26:09			
[s] Observation end time (MET)	224894598.184000	224895271.54129			
Observation end date	2005-02-15T22:42:14	2005-02-15T22:54:31			
Read mode	TIMED	TIMED			

2.3 Aspect

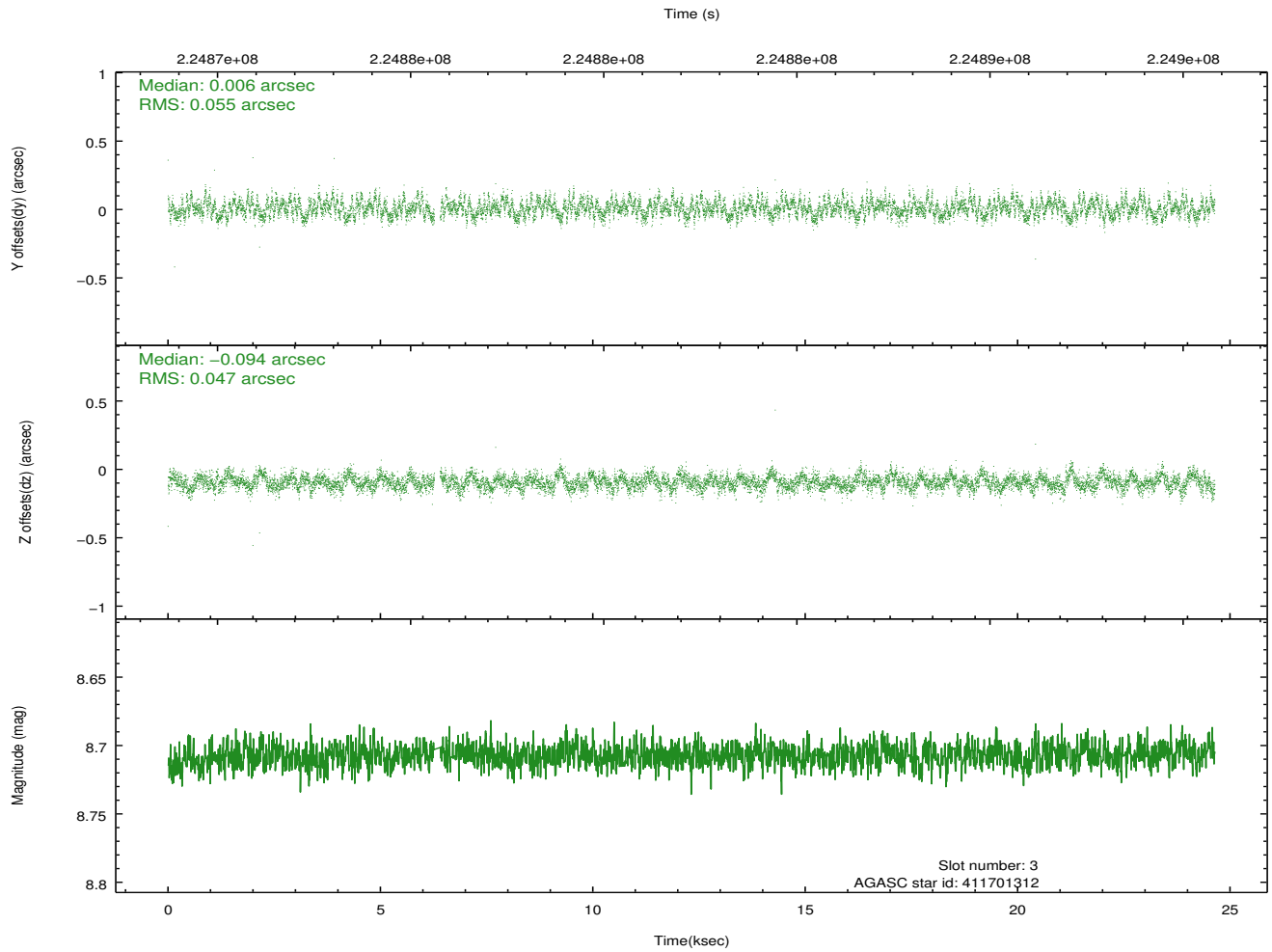
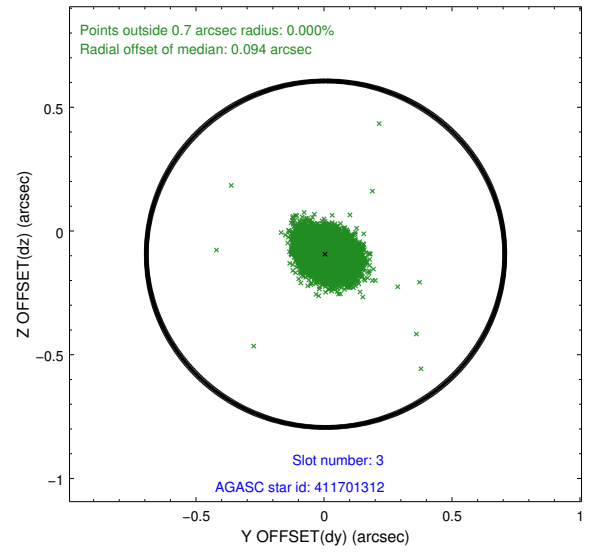
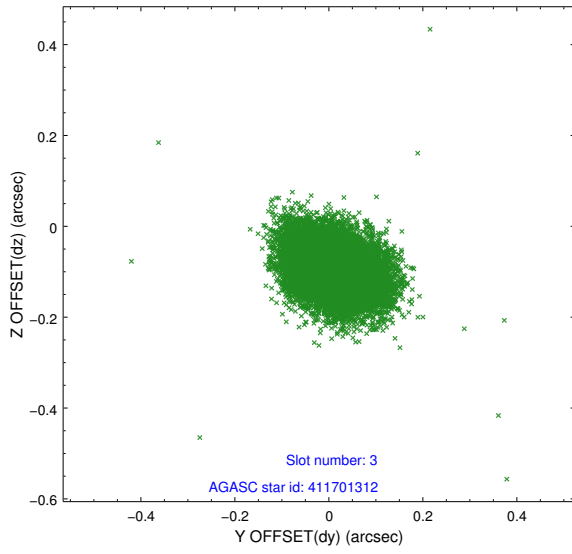


Slot Statistics

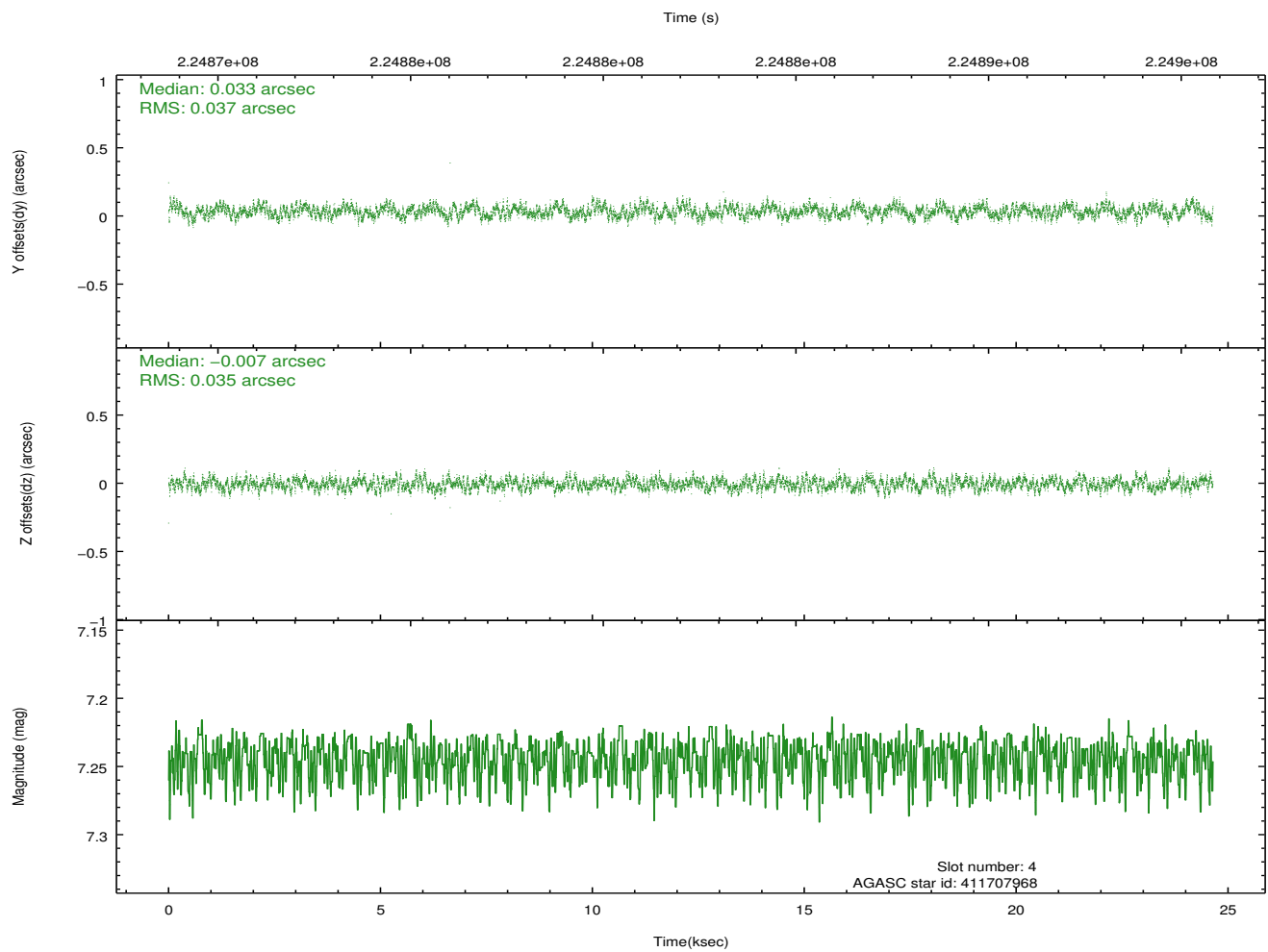
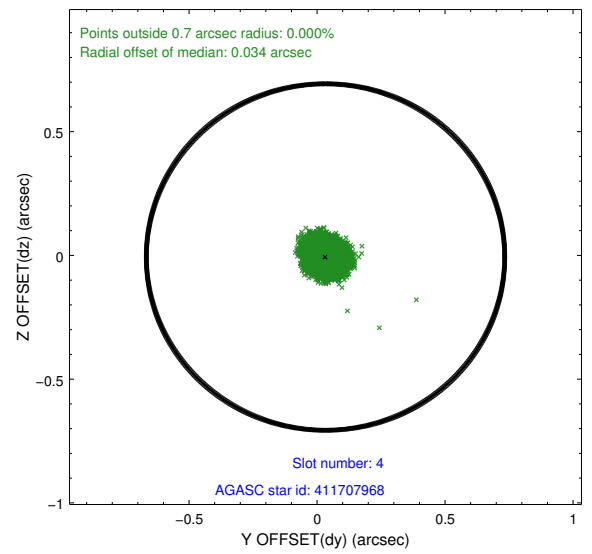
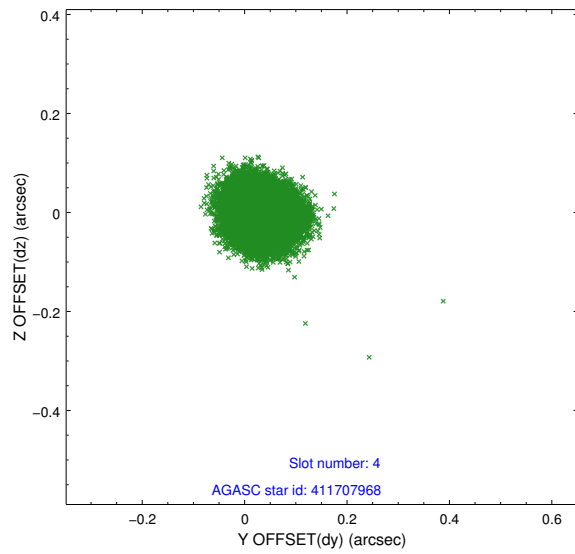
slot	status	id	mag	n_pts	med_dy	med_dz	dr1	dr2	ra	dec	mean_y	mean_z
0	FID	ACIS-I-1	7.28	6010	-0.048	0.115	0.012	0.052	0.000000	0.000000	932.68	-653.27
1	FID	ACIS-I-5	7.24	6011	-0.098	0.007	0.009	0.018	0.000000	0.000000	-1815.43	1244.07
2	FID	ACIS-I-6	7.24	6010	0.054	-0.050	0.011	0.041	0.000000	0.000000	398.17	1888.66
3	GUIDE	411701312	8.71	11955	0.006	-0.094	0.076	0.124	298.889956	40.820220	-2015.97	1851.31
4	GUIDE	411707968	7.24	12021	0.033	-0.007	0.056	0.085	299.509933	40.926839	-418.36	1185.86
5	GUIDE	413421016	8.70	12018	-0.096	0.142	0.062	0.101	300.612426	40.446254	1061.73	-1954.16
6	GUIDE	413405352	8.36	12019	0.038	-0.135	0.067	0.107	300.290830	41.091941	1660.80	456.44
7	GUIDE	413421624	8.71	12017	0.014	0.095	0.059	0.095	300.399768	40.893051	1496.89	-300.33

2.4 Star Slots

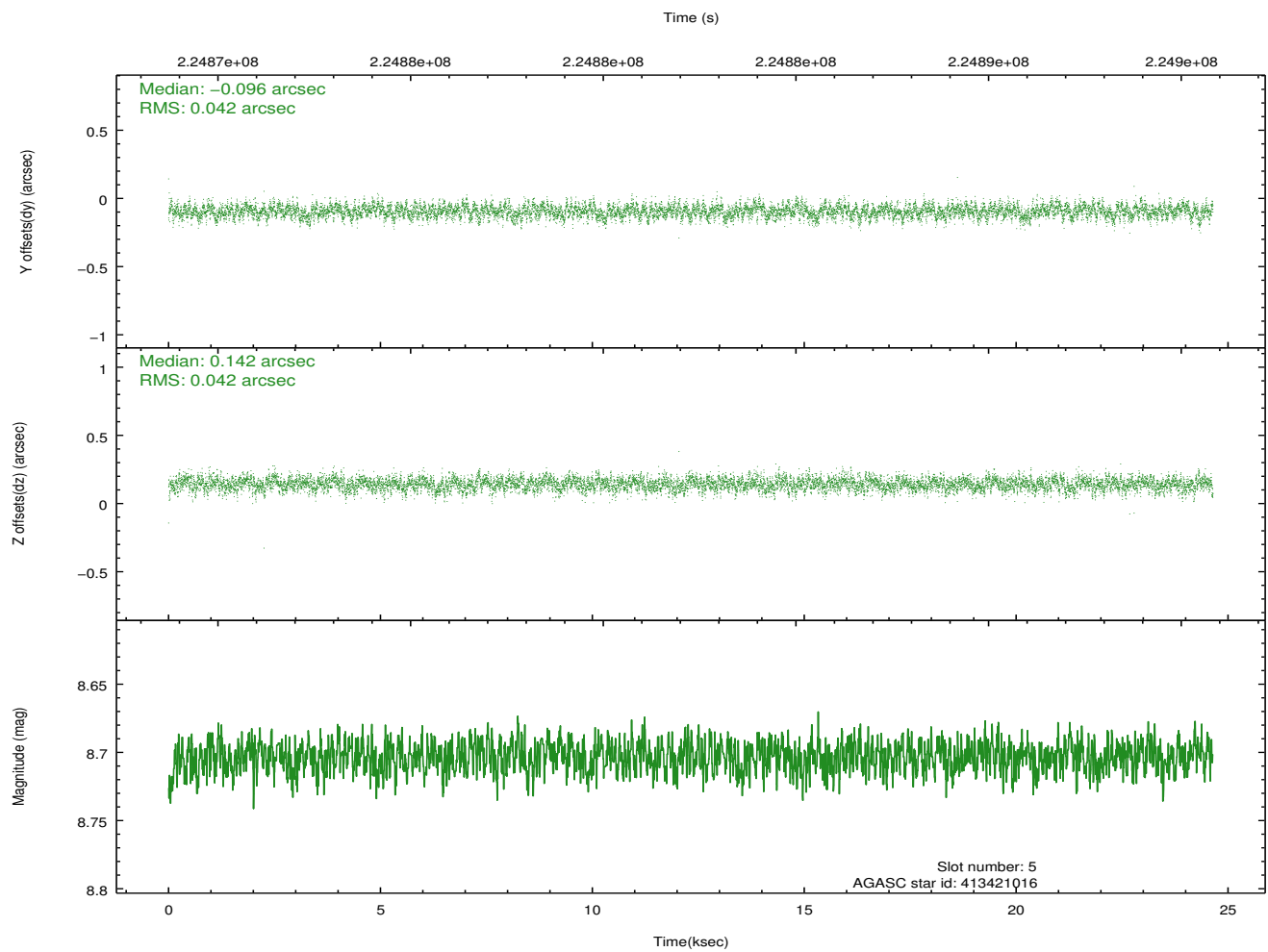
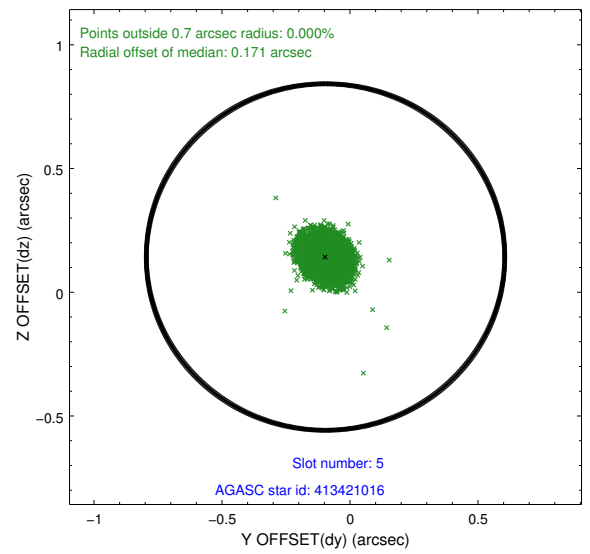
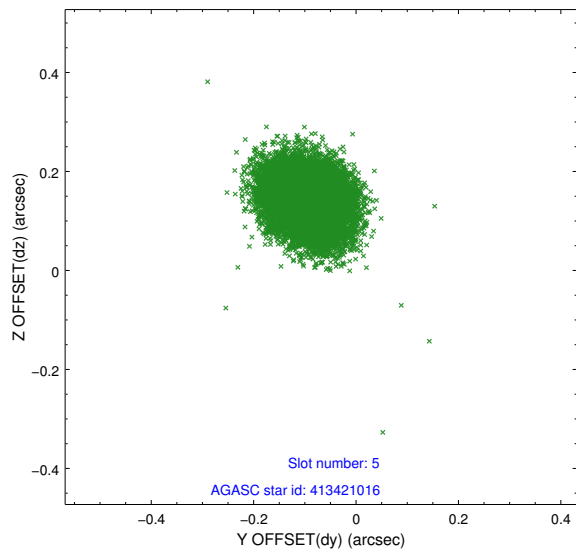
2.4.1 Slot 3



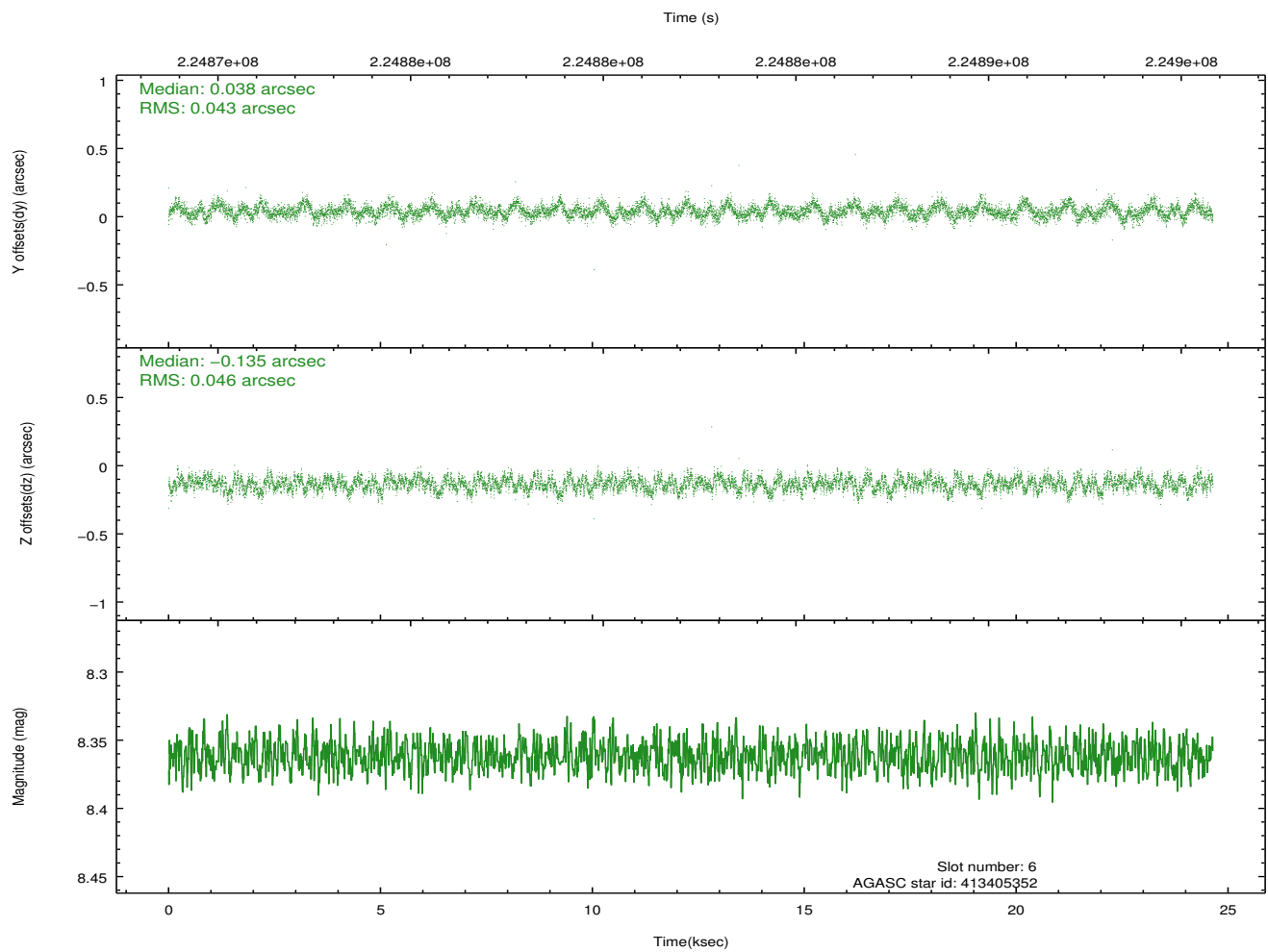
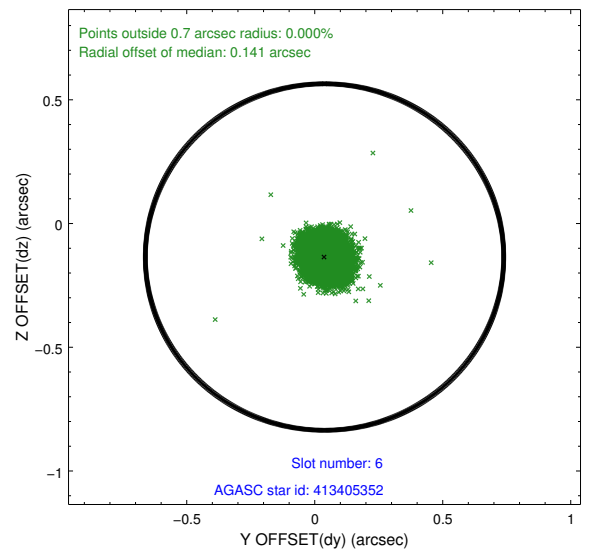
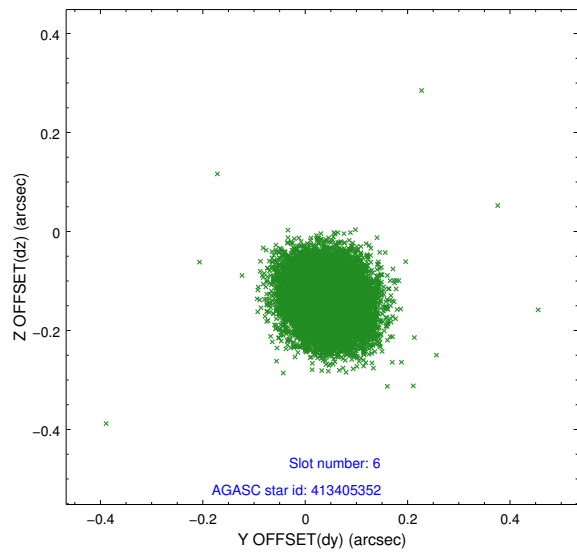
2.4.2 Slot 4



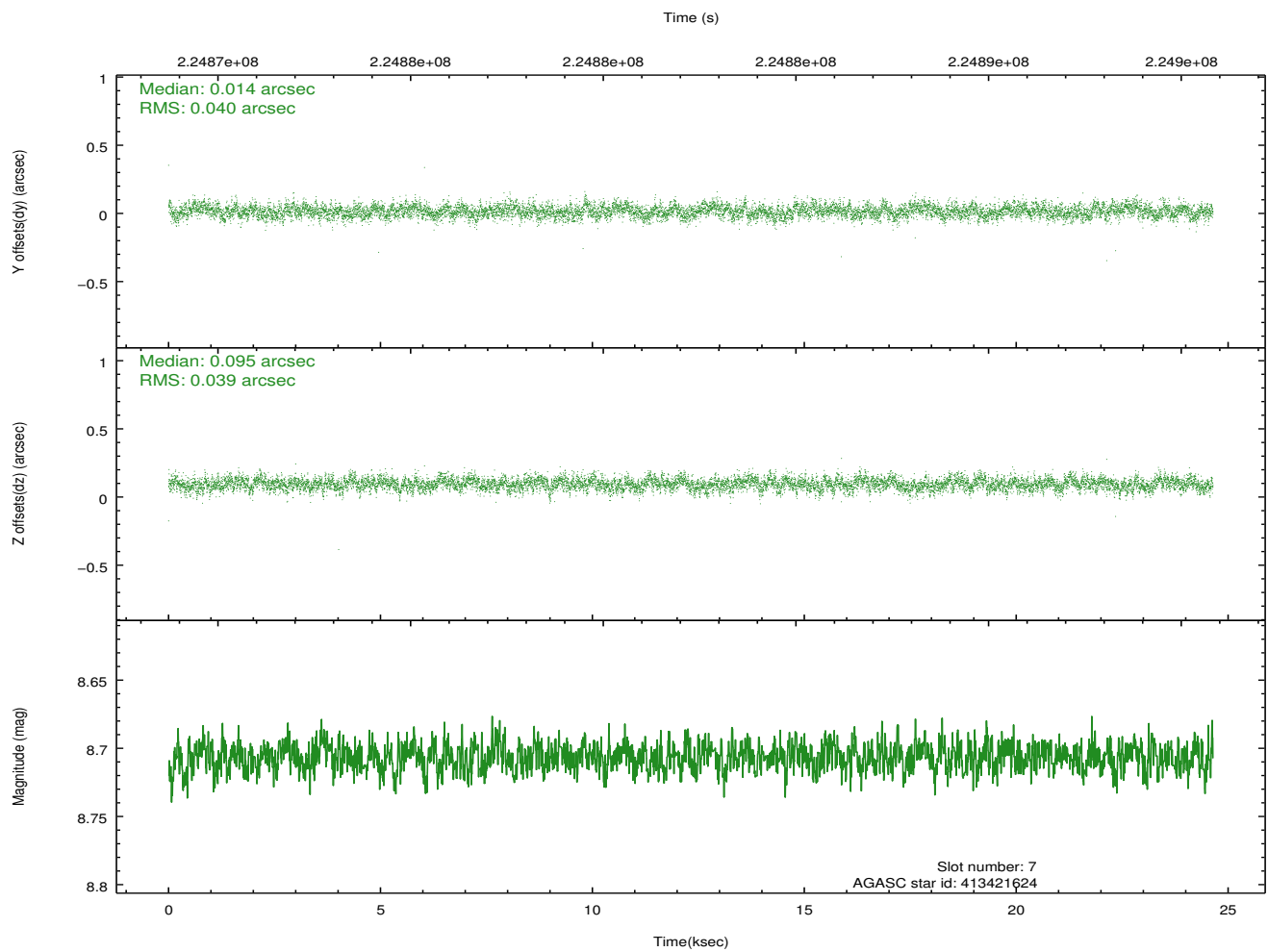
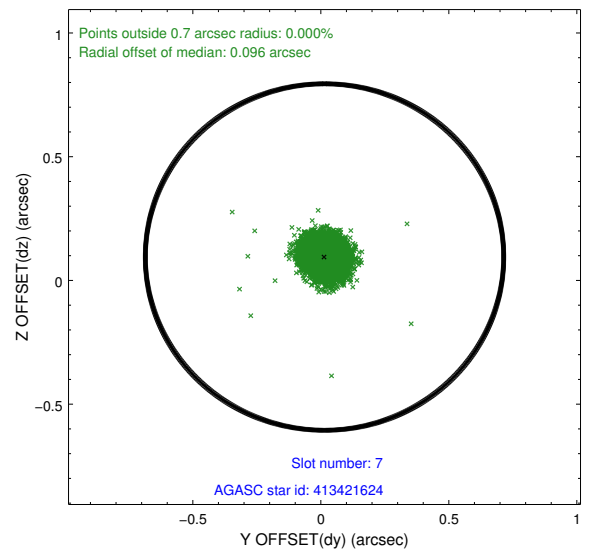
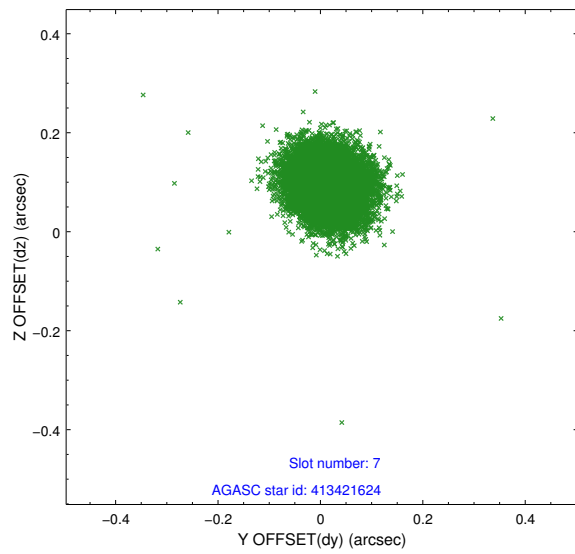
2.4.3 Slot 5



2.4.4 Slot 6

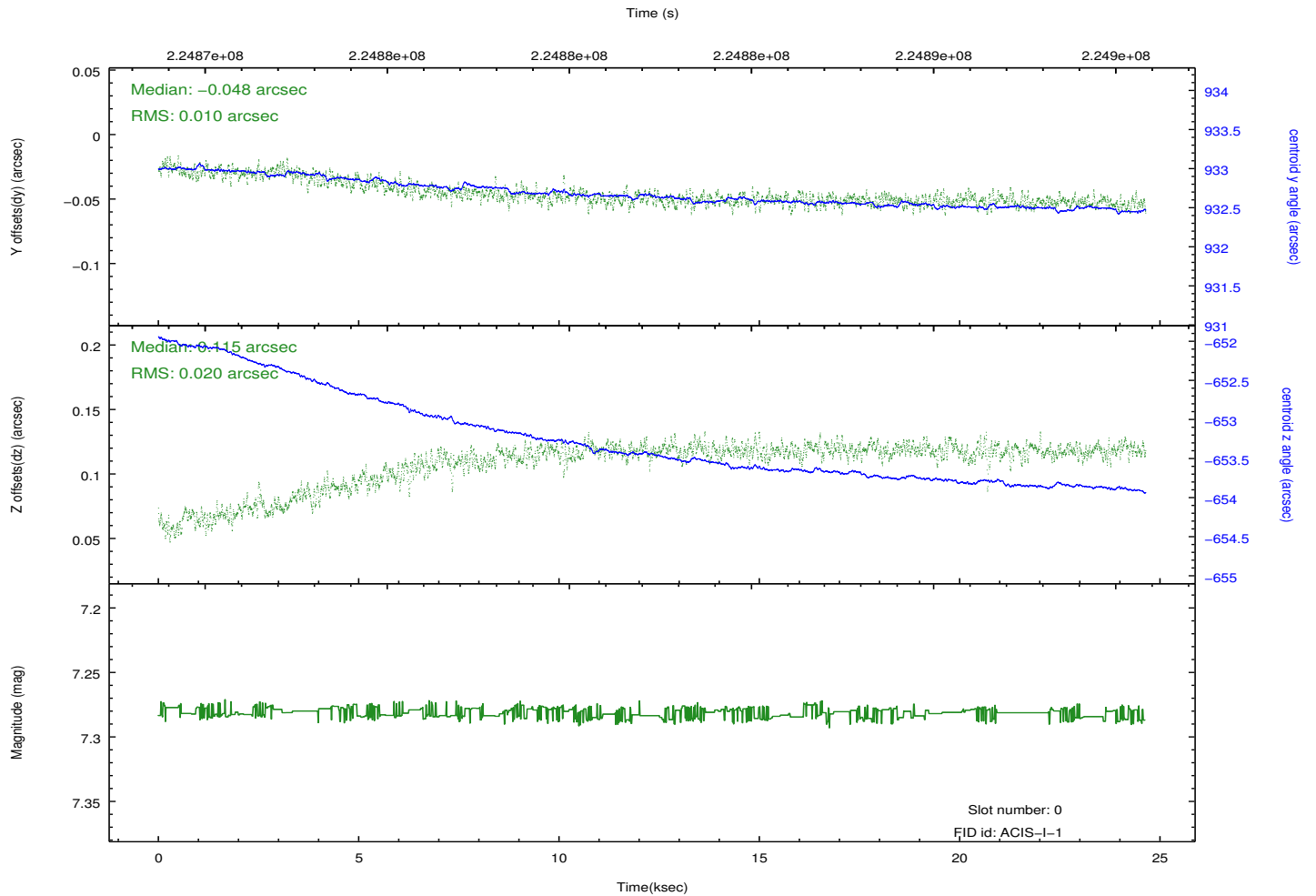
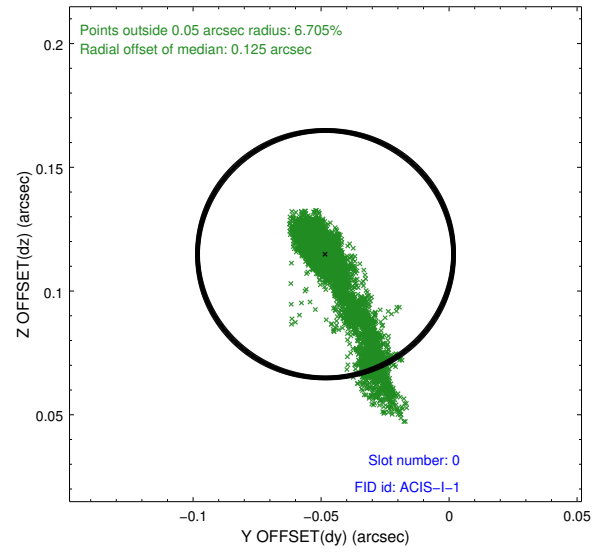
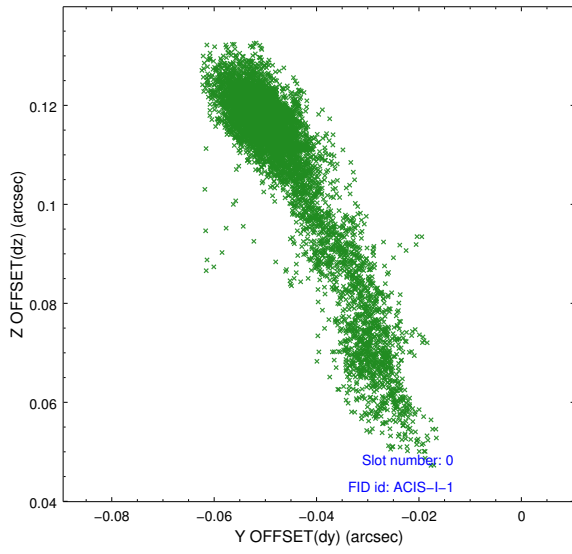


2.4.5 Slot 7

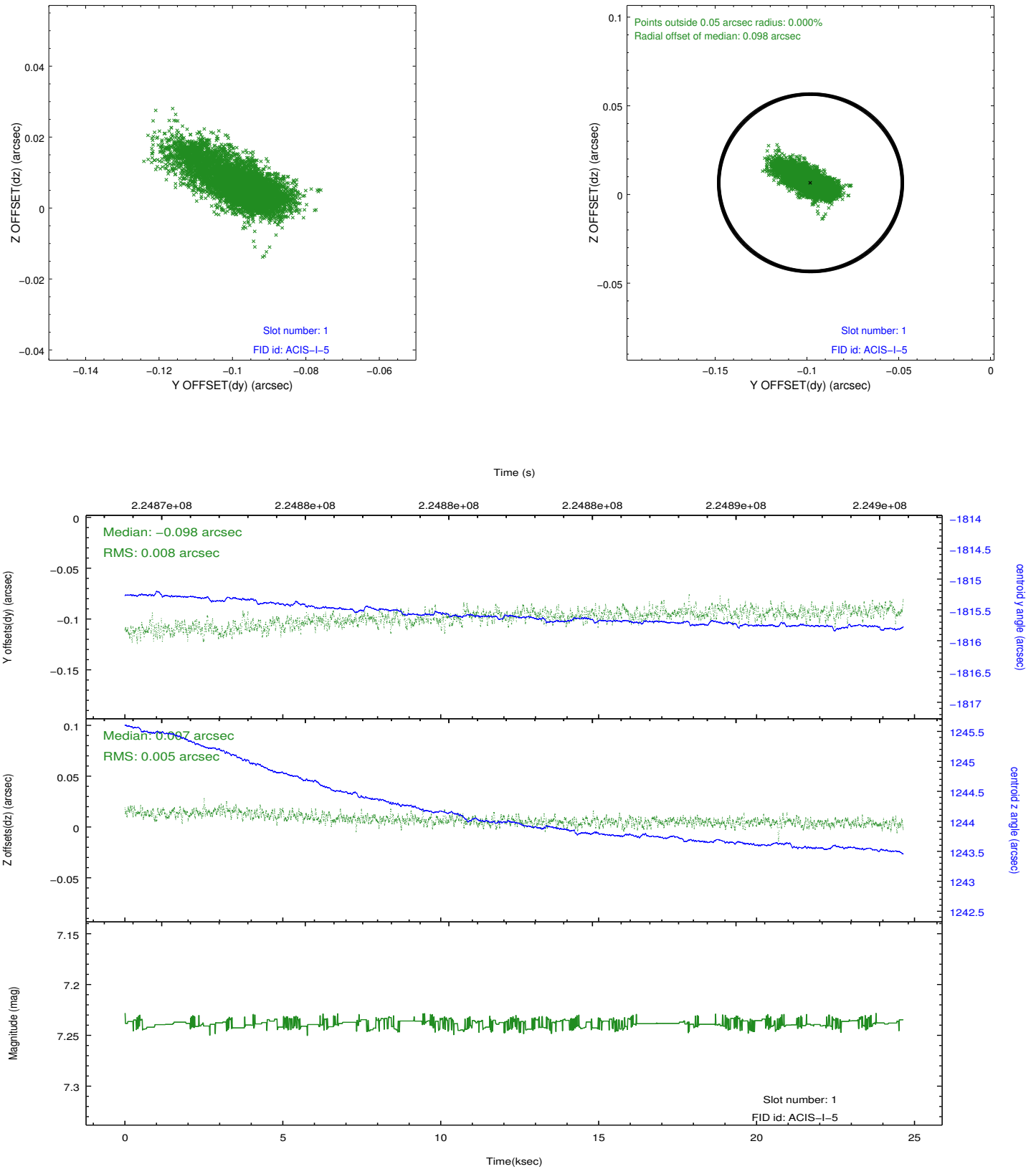


2.5 FID Slots

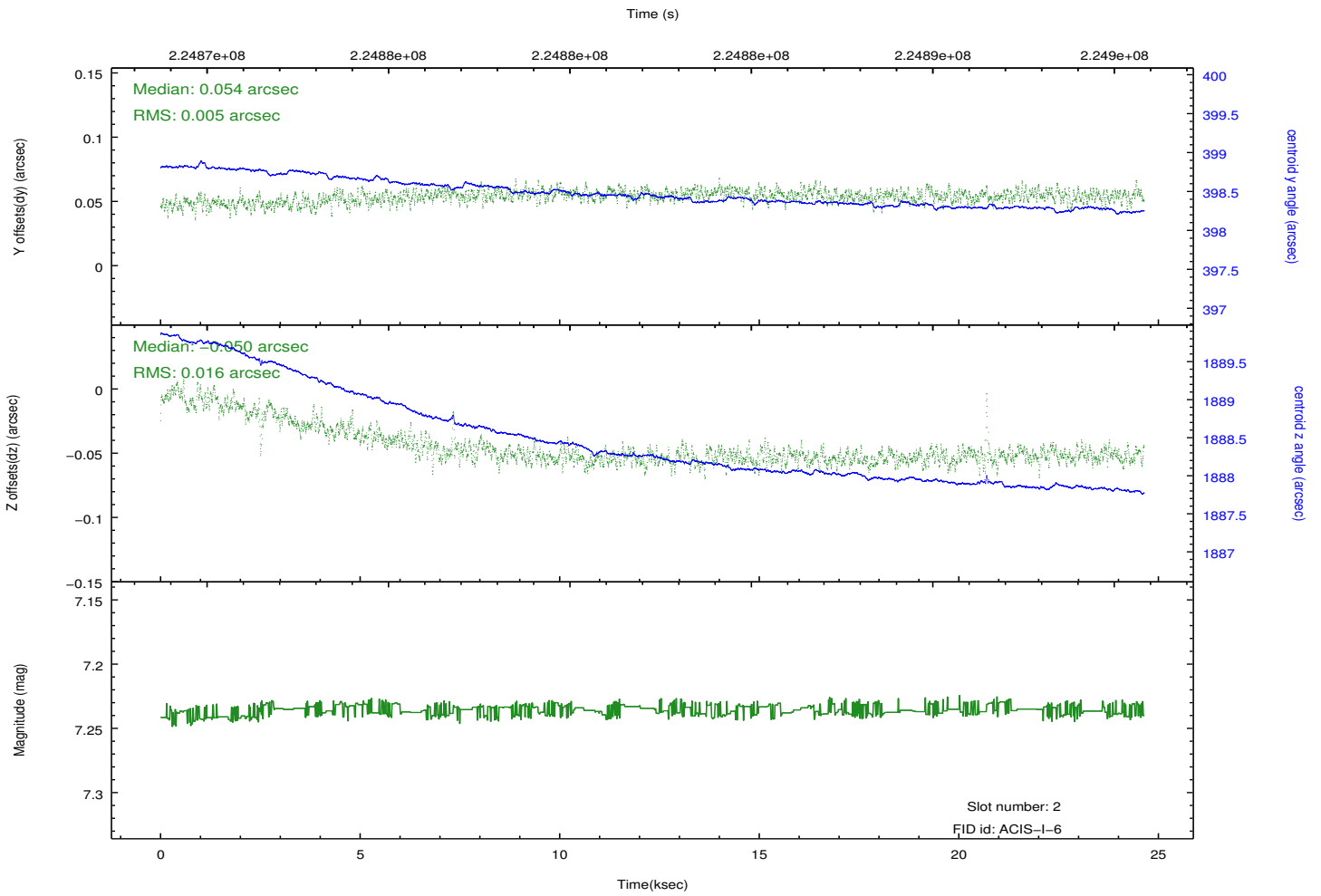
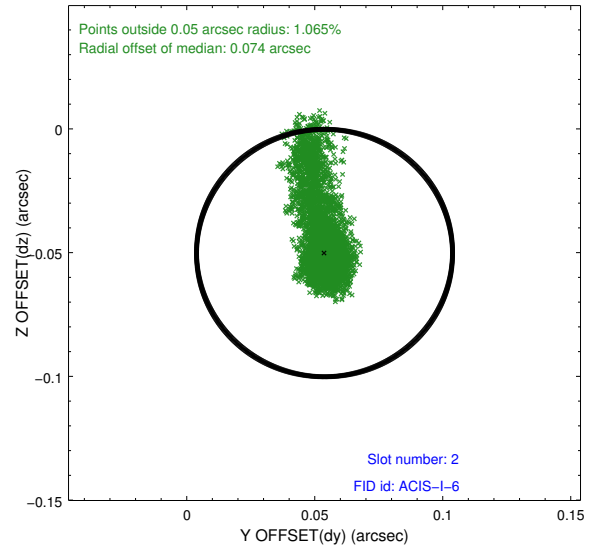
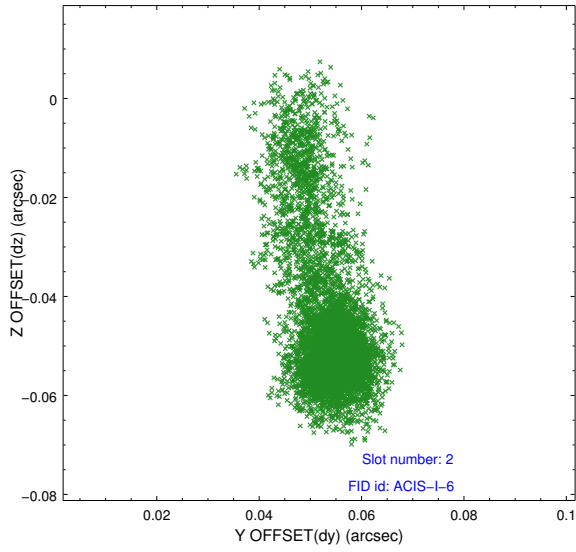
2.5.1 Slot 0



2.5.2 Slot 1



2.5.3 Slot 2



A Summary

A.1 Status

V&V Scientist	Jen Lauer
V&V Date (YYYY-MM-DD)	2013.01.10
V&V Edition	1
V&V Disposition and Status	OK
V&V Charge Time	24.62937

A.2 Comments