

# V&V Reference Report

## L2 ASCDS Version : 8.4.3

Observation 6235 - L2 Version 4  
Chandra X-Ray Center

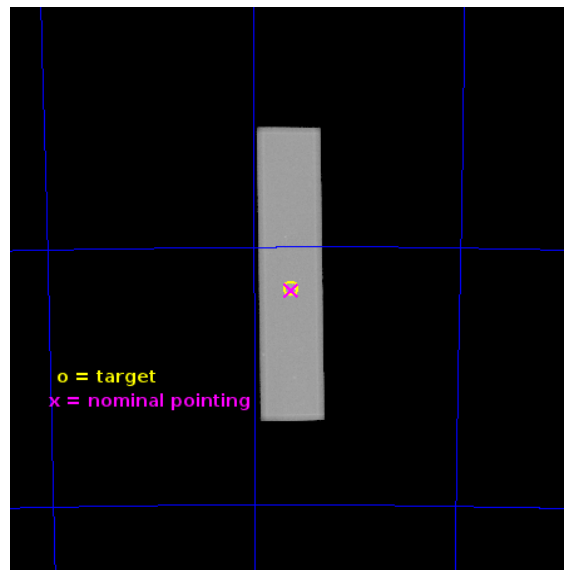
L2 Processing Date : Jun 29 2013

## Contents

<b>1</b>	<b>Front</b>	<b>2</b>
<b>2</b>	<b>OBI</b>	<b>3</b>
2.1	OBI . . . . .	3
2.1.1	Images . . . . .	3
2.1.2	Parameters . . . . .	4
2.1.3	Events . . . . .	4
2.2	Compared Parameters . . . . .	5
2.3	Aspect . . . . .	6
2.4	Star Slots . . . . .	9
2.4.1	Slot 3 . . . . .	9
2.4.2	Slot 4 . . . . .	10
2.4.3	Slot 5 . . . . .	11
2.4.4	Slot 6 . . . . .	12
2.4.5	Slot 7 . . . . .	13
2.5	FID Slots . . . . .	14
2.5.1	Slot 0 . . . . .	14
2.5.2	Slot 1 . . . . .	15
2.5.3	Slot 2 . . . . .	16
<b>A</b>	<b>Summary</b>	<b>17</b>
A.1	Status . . . . .	17
A.2	Comments . . . . .	17

# 1 Front

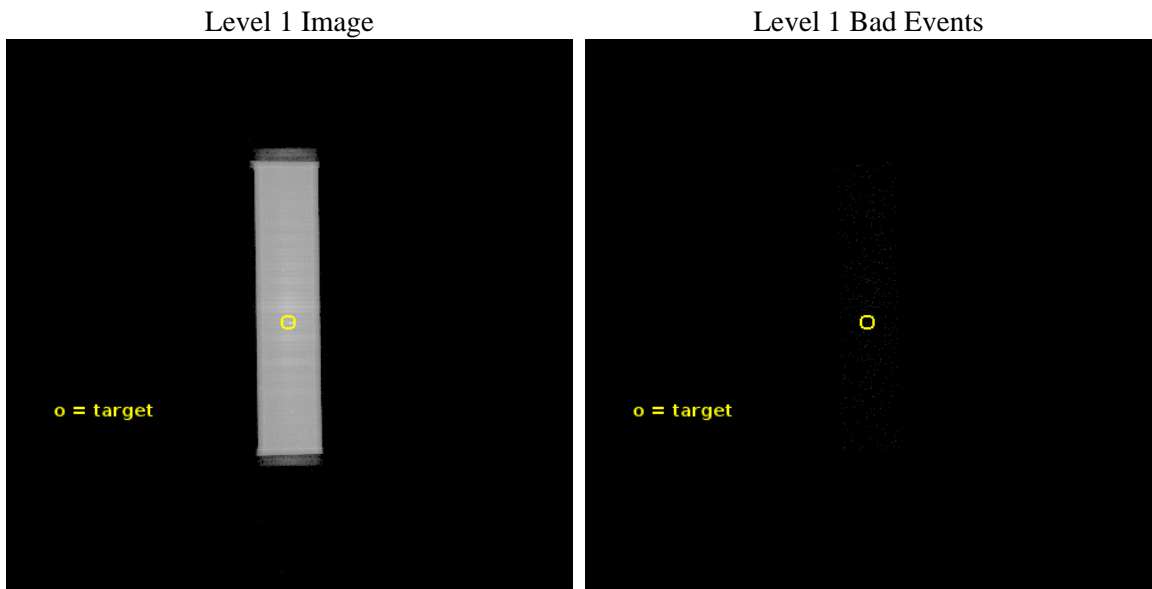
seq_num	500535	Sequence number
obs_id	6235	Observation id
title	Search for Sub-Millisecond Pulsars in 47 Tuc	Proposal title
observer	Prof. Robert Rutledge	Principal investigator
object	47 Tuc	Source name
ra_targ	6.021667	Observer's specified target RA [deg]
dec_targ	-72.080528	Observer's specified target Dec [deg]
ra_nom	6.021072730777	Nominal RA [deg]
dec_nom	-72.085195399056	Nominal Dec [deg]
roll_nom	269.19281692903	Nominal Roll [deg]
revision	4	Processing version of data
ontime	50134.033572733	[s]
livetime	49930.099149451	Ontime multiplied by DTCOR
l2events	2057965	Number of level 2 events



## 2 OBI

### 2.1 OBI

#### 2.1.1 Images



### 2.1.2 Parameters

obi_num	0	Obi number	sched_exp_time	50000.000000	[s] Scheduled observation exposure time
ascdsver	10	Processing system revision	ontime	50134.033572733	[s]
caldsver	4.5.7	&#160	l1events	3040414	Number of level 1 events
date	2013-06-29T04:08:21	Date and time of file creation			
revision	4	Processing version of data			

### 2.1.3 Events

Level 1 Events

	<b>segment 1</b>	<b>segment 2</b>	<b>segment 3</b>
level 1 events	3767	3036639	8
rejected events	84	63307	4
rejected %	2%	2%	50%

## 2.2 Compared Parameters

Parameter	Planned	Actual
Instrument	HRC	HRC
Detector	HRC-S	HRC-S
Grating	NONE	NONE
Data mode	OBSERVING	OBSERVING
Observation mode	POINTING	POINTING
[deg] Pointing RA	5.971756	6.021072730776972
[deg] Pointing Dec	-72.060939	-72.08519539905632
[deg] Pointing Roll	269.078560	269.1928169290314
[mm] SIM focus pos	-1.533336	-1.526339935833849
[mm] SIM defocus	7.710433287538843e-07	0.006996703570447904
[mm] SIM translation stage pos	250.455976	250.4635187648994
[mm] SIM translation stage offset	0	-0.007540371344731511
[s] Observation start time (MET)	252735910.184000	252734762.25364
Observation start date	2006-01-04T04:24:05	2006-01-04T04:06:02
[s] Observation end time (MET)	252785910.184000	252786794.33105
Observation end date	2006-01-04T18:17:25	2006-01-04T18:33:14

Parameter	Planned	Actual
Obspar format version number	7	7
Obspar file type	PREDICTED	ACTUAL
Obspar update status	NONE	UPDATED

## 2.3 Aspect

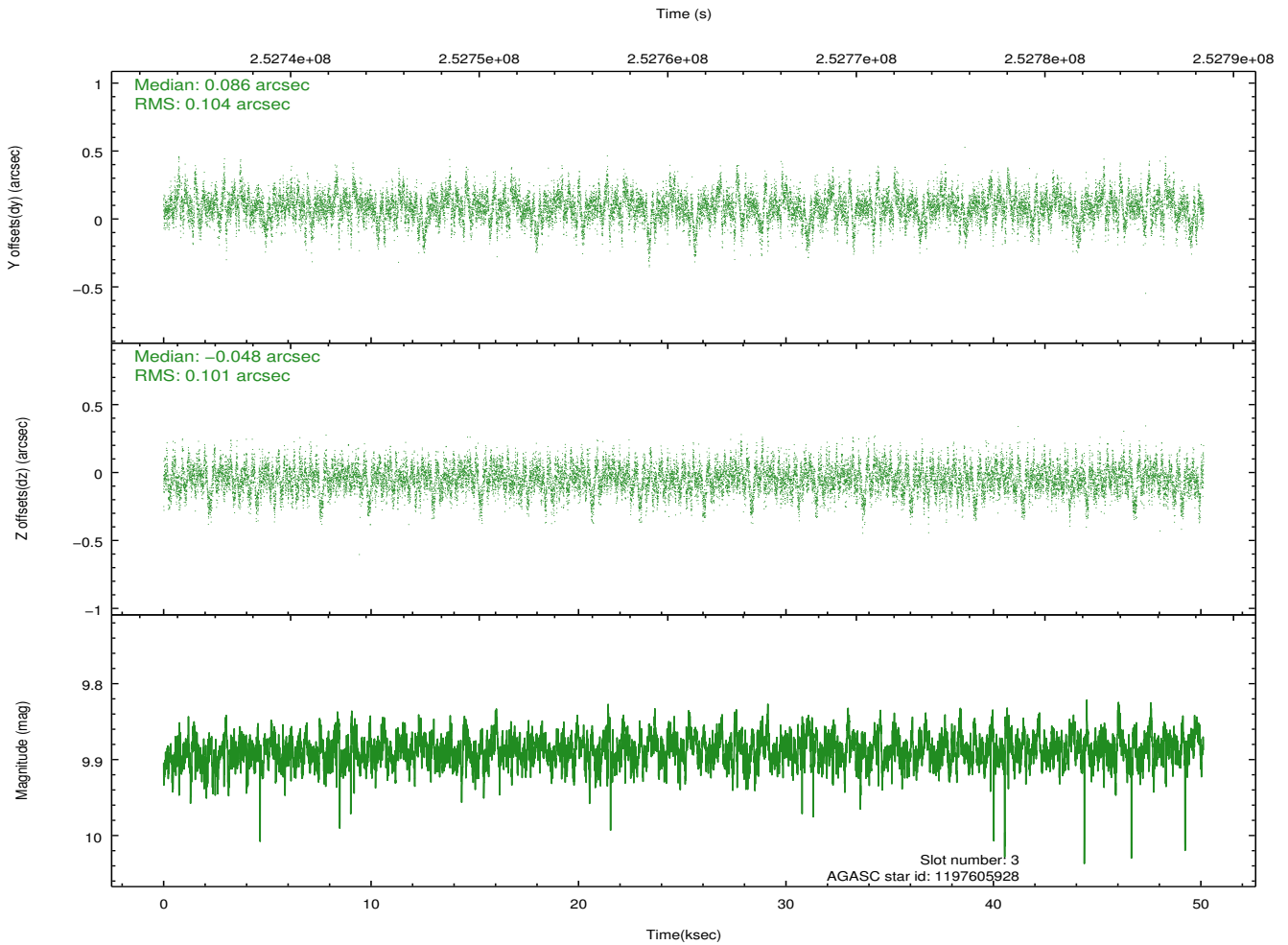
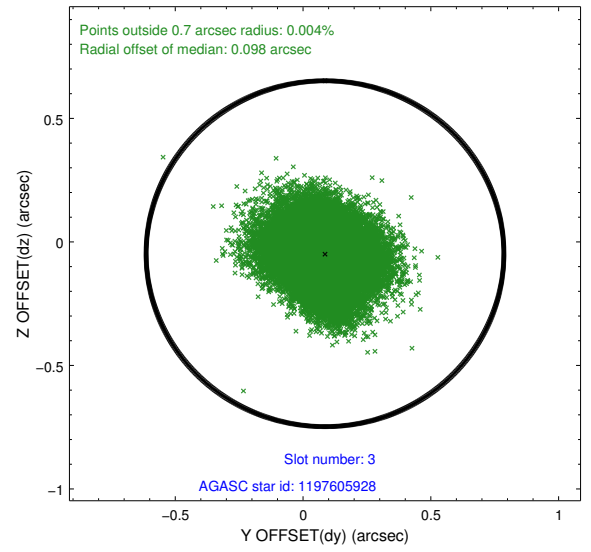
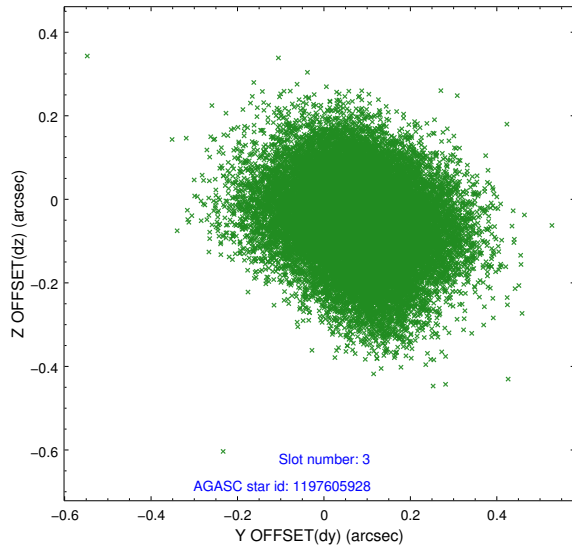


### Slot Statistics

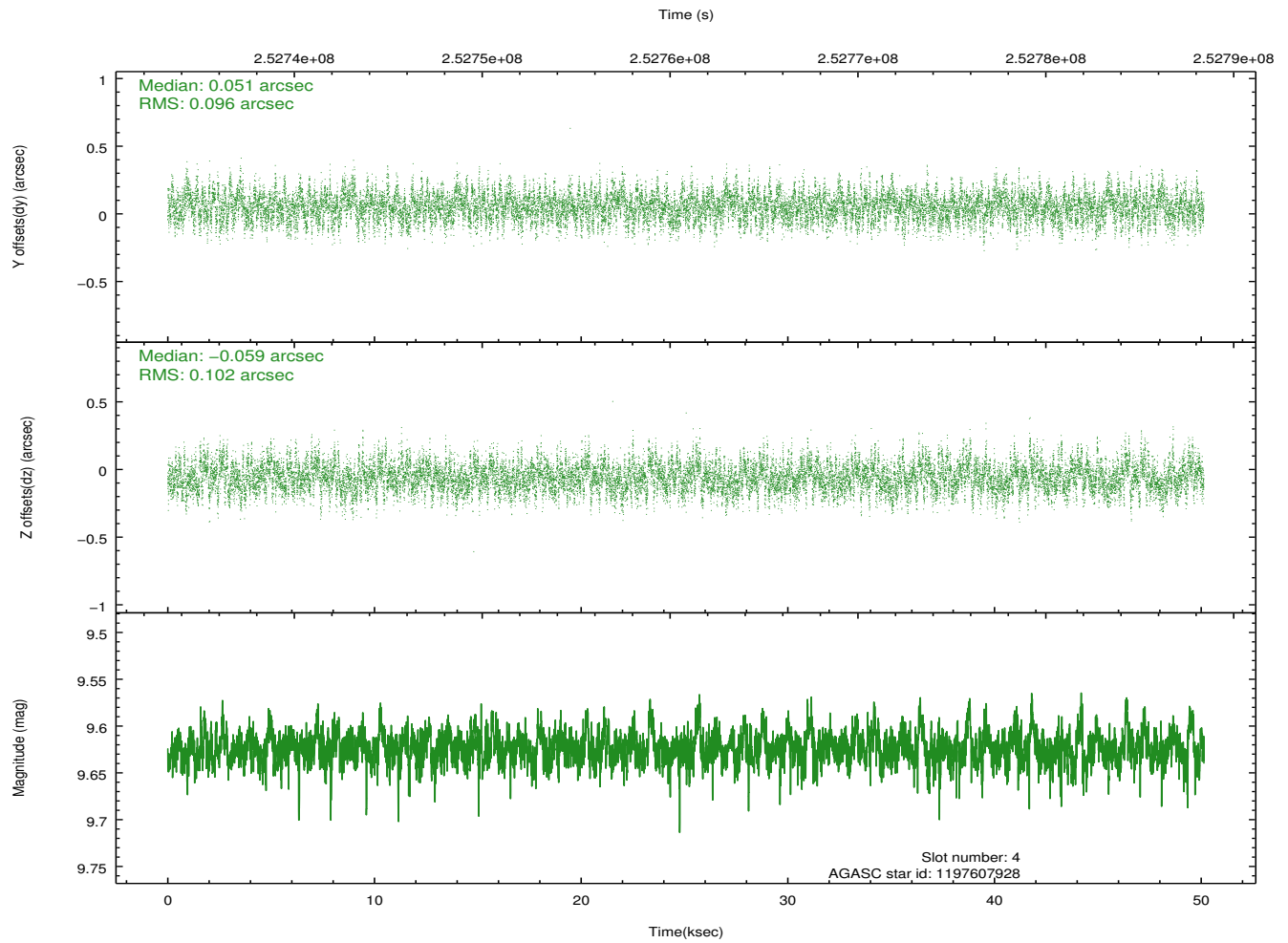
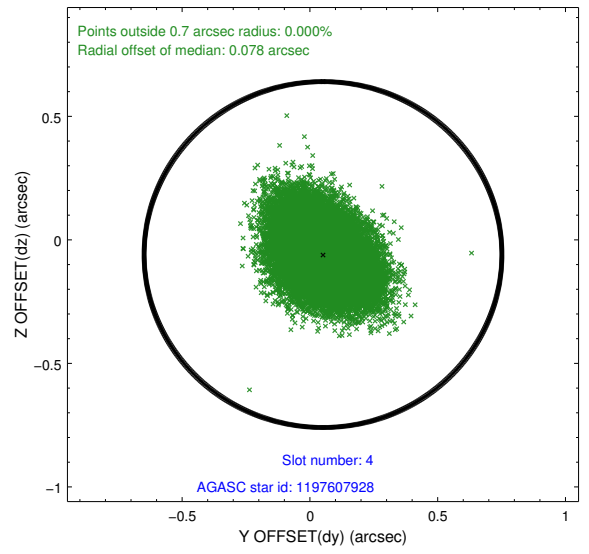
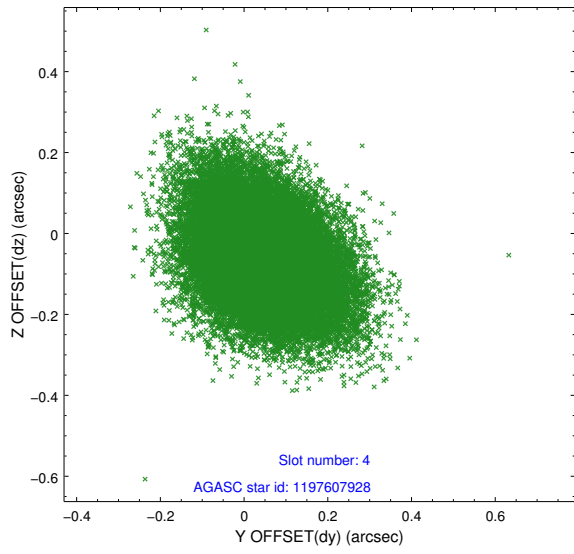
slot	status	id	mag	n_pts	med_dy	med_dz	dr1	dr2	ra	dec	mean_y	mean_z
0	FID	HRC-S-1	7.01	12227	0.142	-0.127	0.013	0.058	0.000000	0.000000	-1162.78	-461.09
1	FID	HRC-S-2	7.00	12229	0.134	-0.108	0.010	0.023	0.000000	0.000000	1236.77	-453.73
2	FID	HRC-S-3	7.02	12229	0.114	-0.068	0.014	0.071	0.000000	0.000000	-1165.44	568.46
3	GUIDE	1197605928	9.89	24410	0.086	-0.048	0.155	0.253	4.361277	-72.423732	1358.37	-1728.74
4	GUIDE	1197607928	9.62	24434	0.051	-0.059	0.148	0.243	7.837743	-72.165759	376.32	2063.46
5	GUIDE	1197617752	10.27	24424	0.096	0.243	0.202	0.361	4.480632	-72.284129	850.65	-1619.39
6	GUIDE	1197625128	8.59	24449	-0.208	-0.110	0.096	0.151	3.920586	-71.426112	-2206.79	-2387.98
7	GUIDE	1197621088	9.91	24374	-0.011	-0.030	0.179	0.317	3.823480	-72.180366	510.83	-2357.20

## 2.4 Star Slots

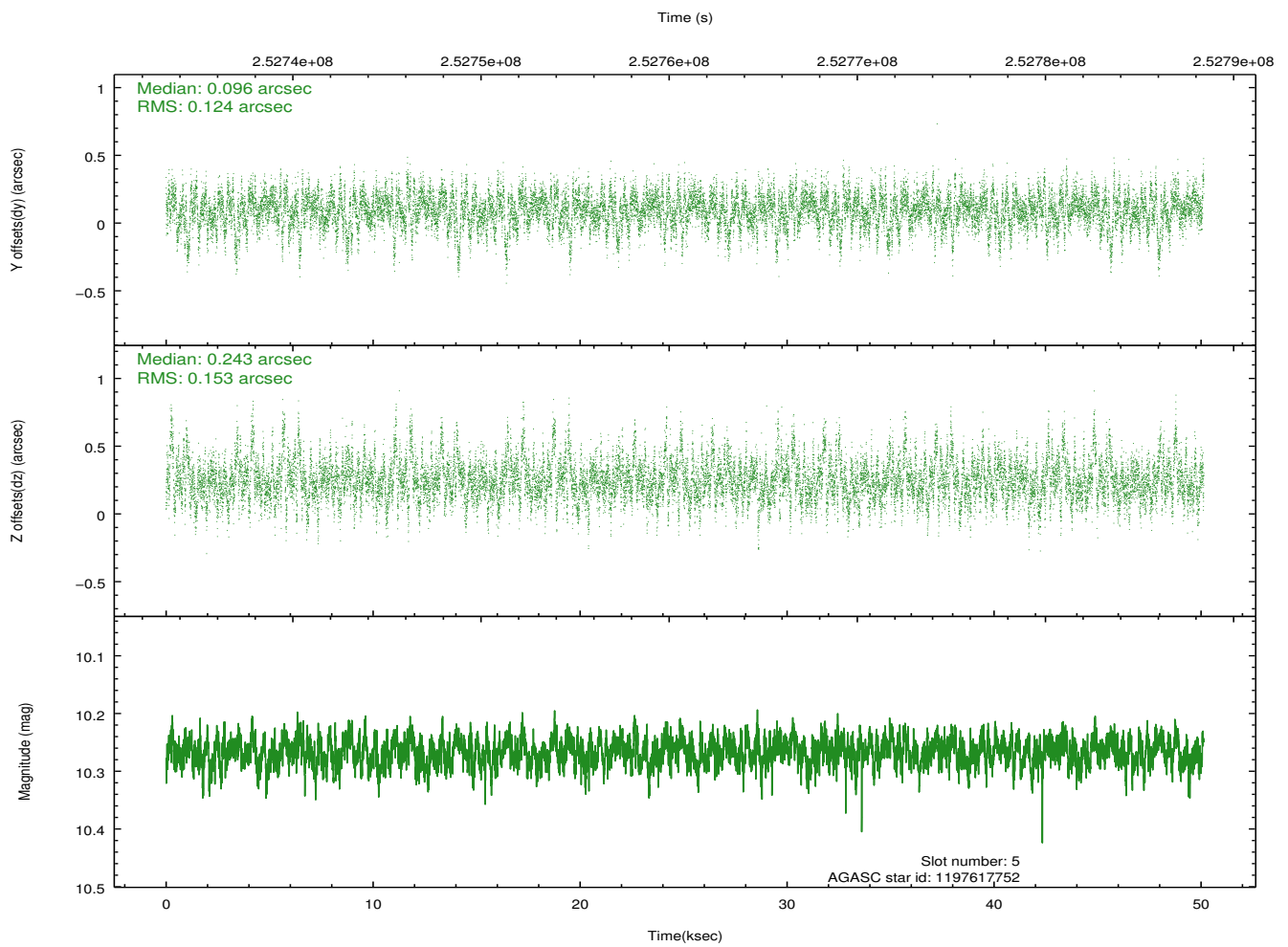
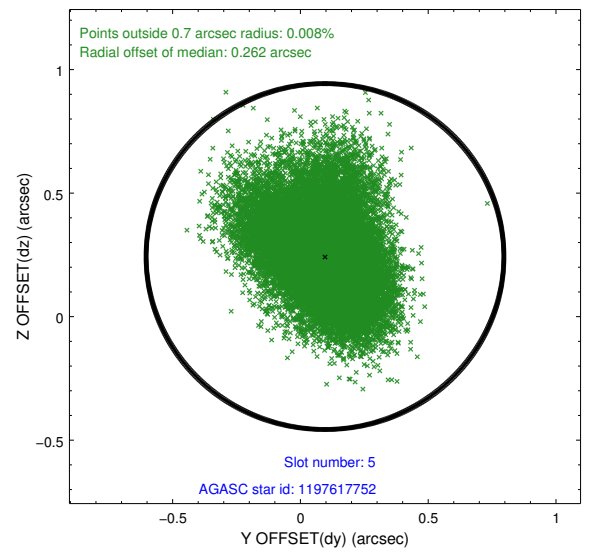
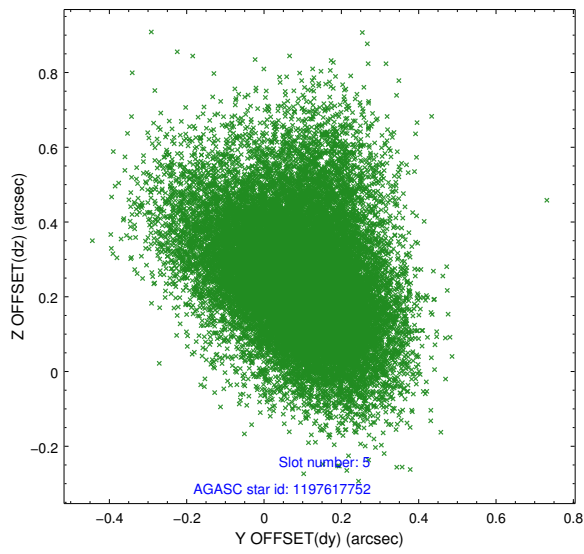
### 2.4.1 Slot 3



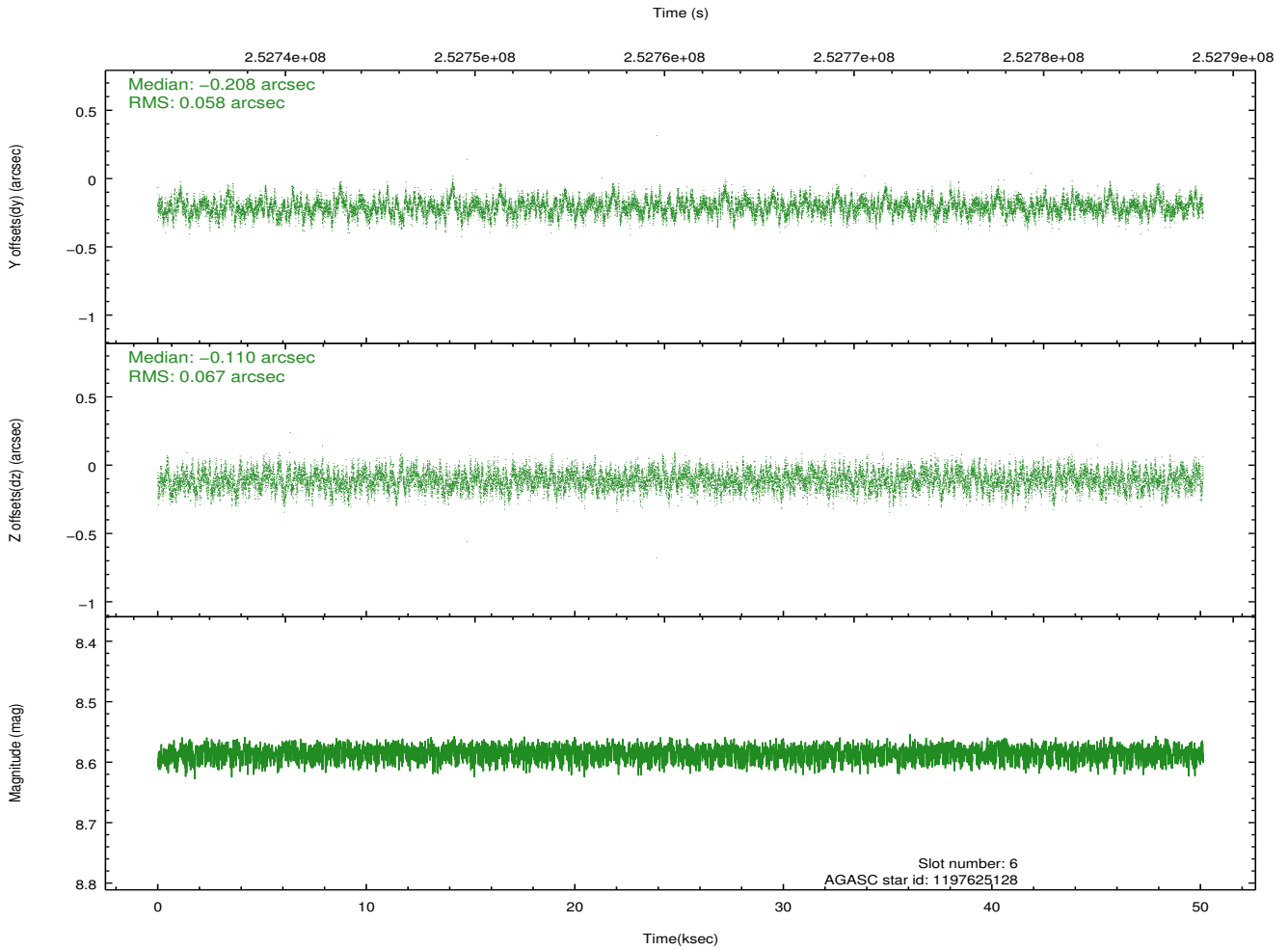
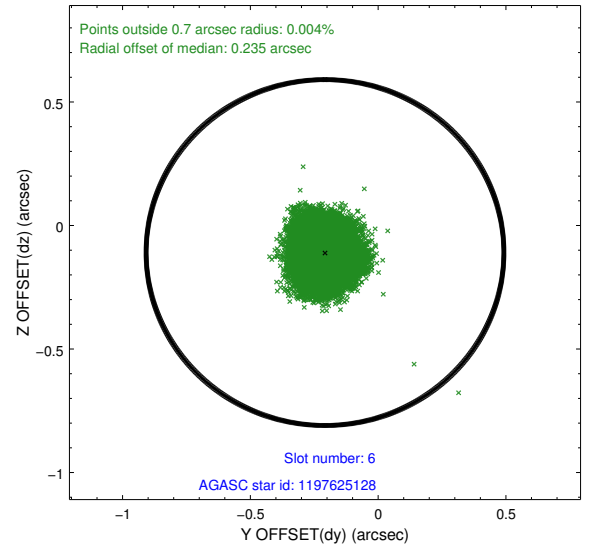
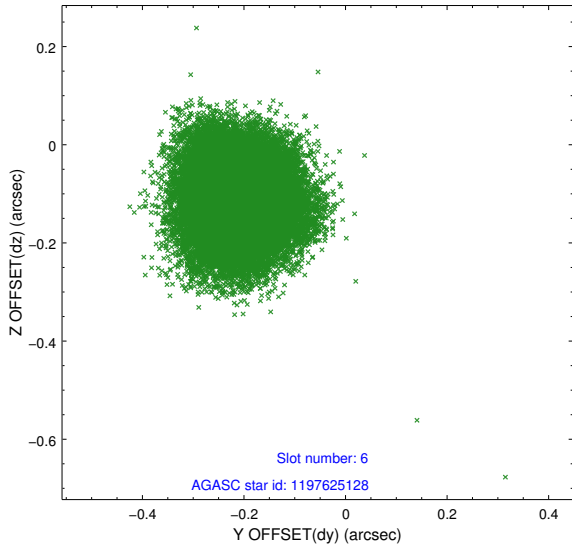
## 2.4.2 Slot 4



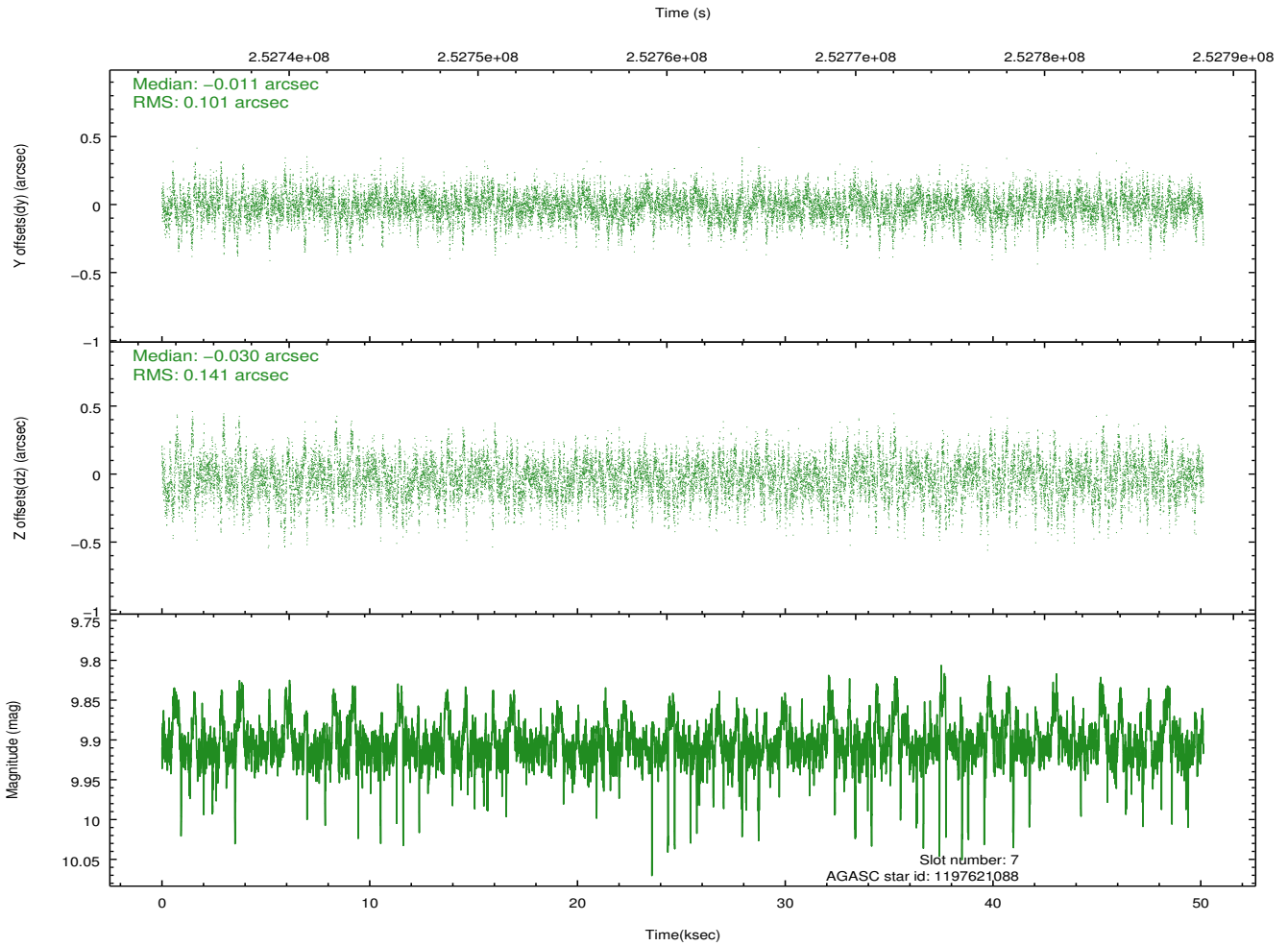
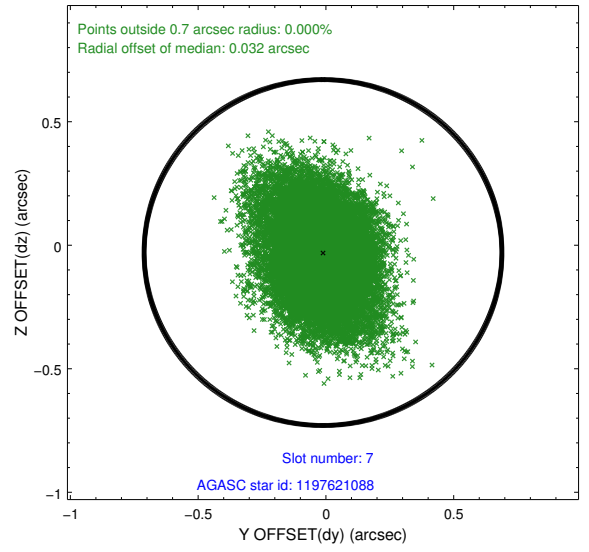
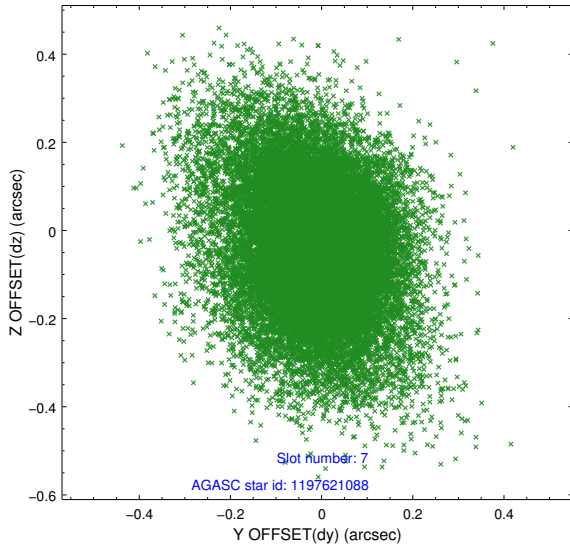
### 2.4.3 Slot 5



### 2.4.4 Slot 6

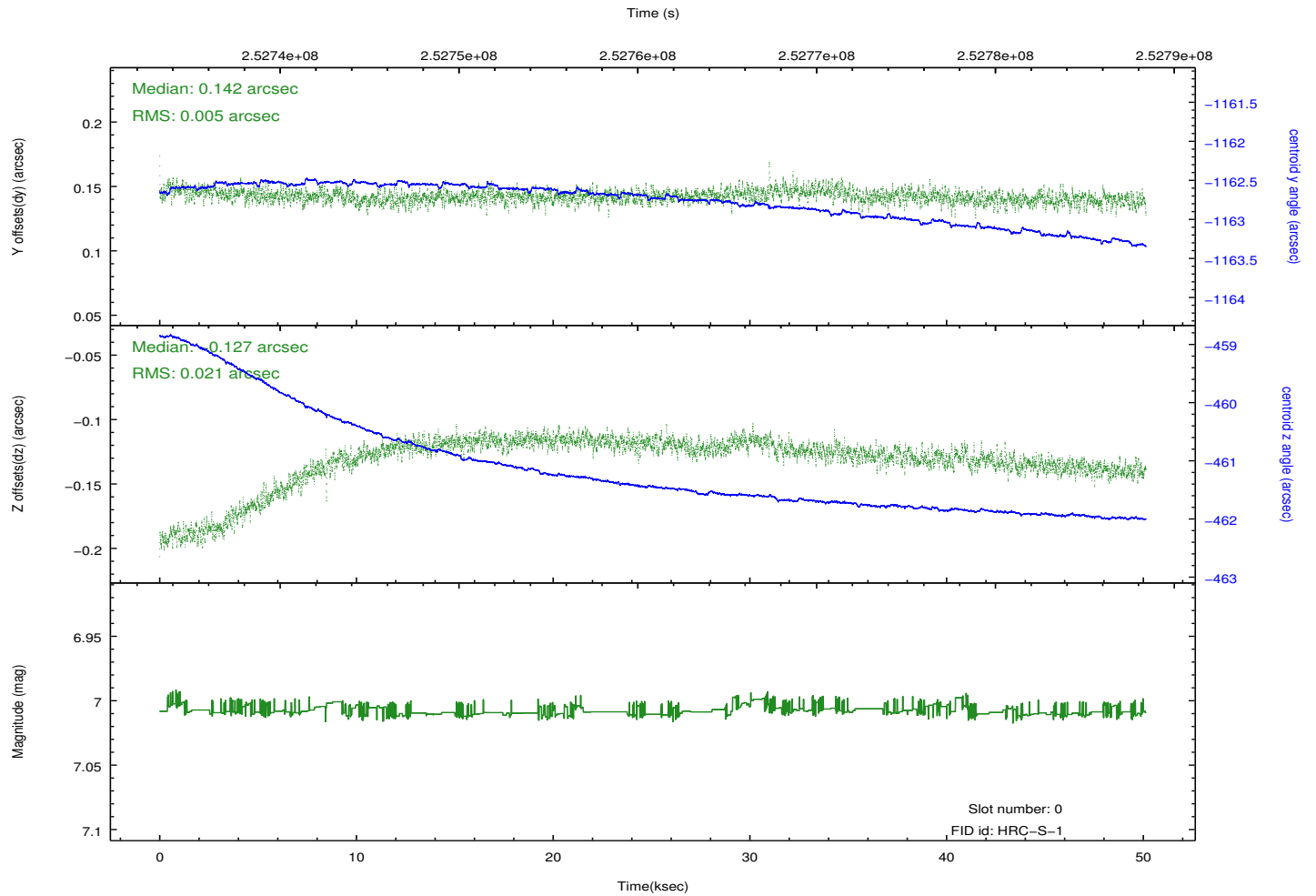
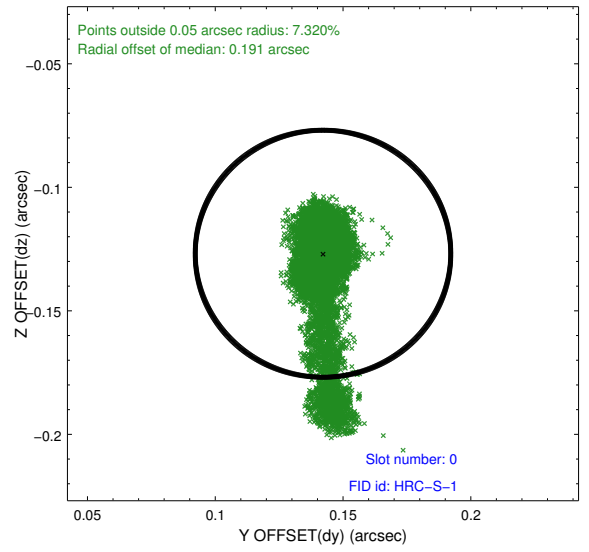
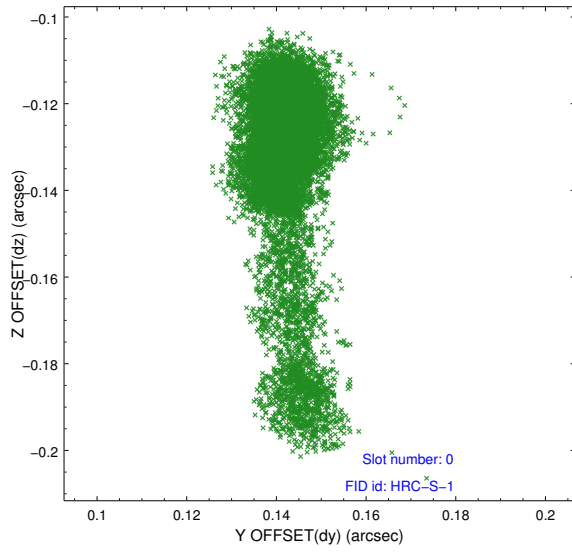


## 2.4.5 Slot 7

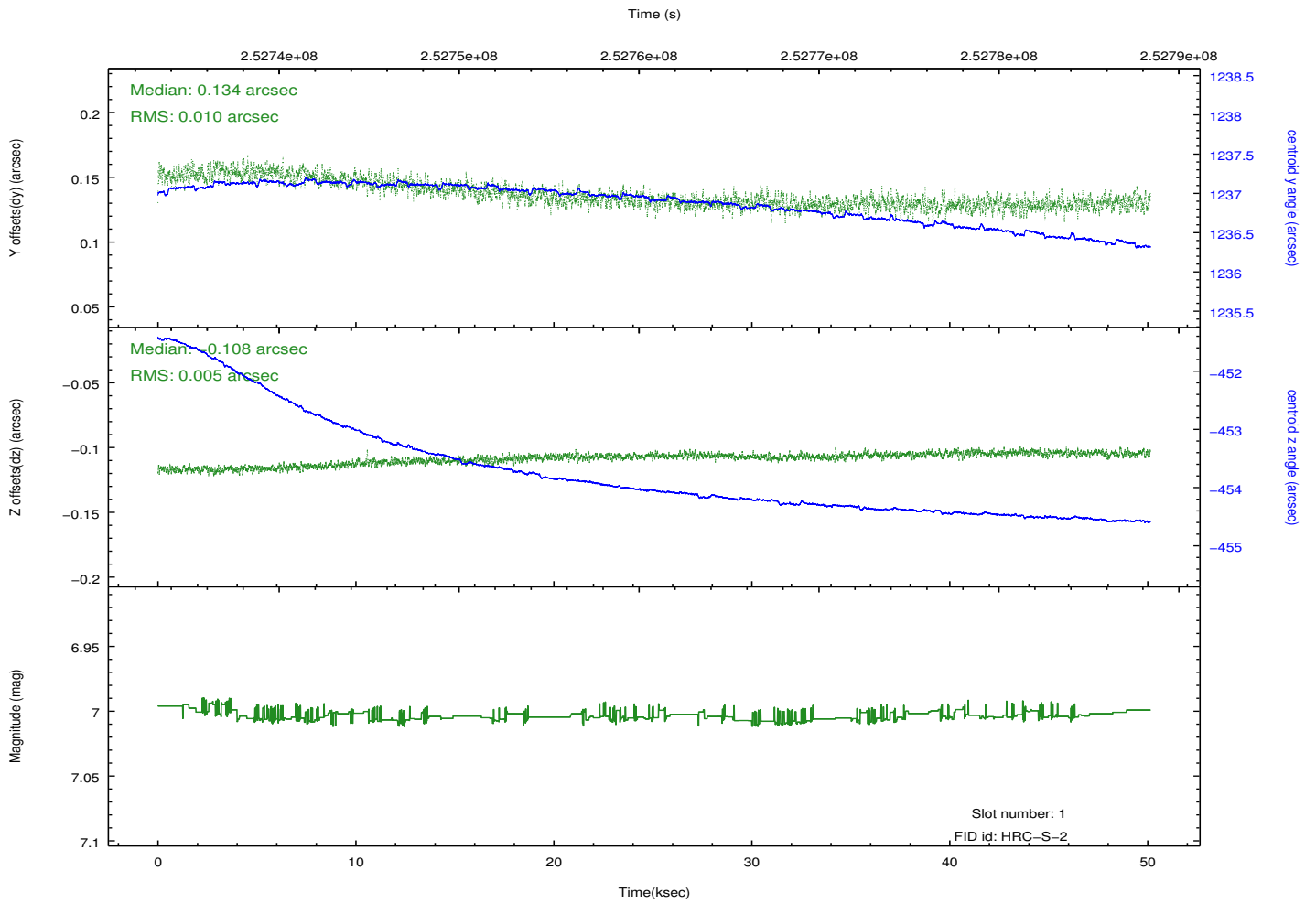
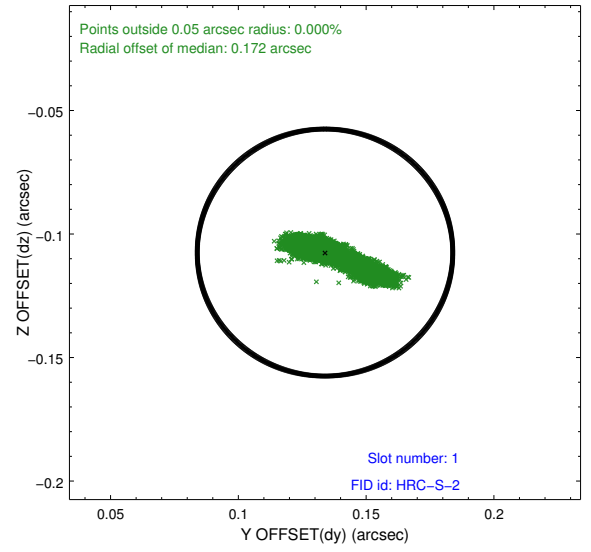
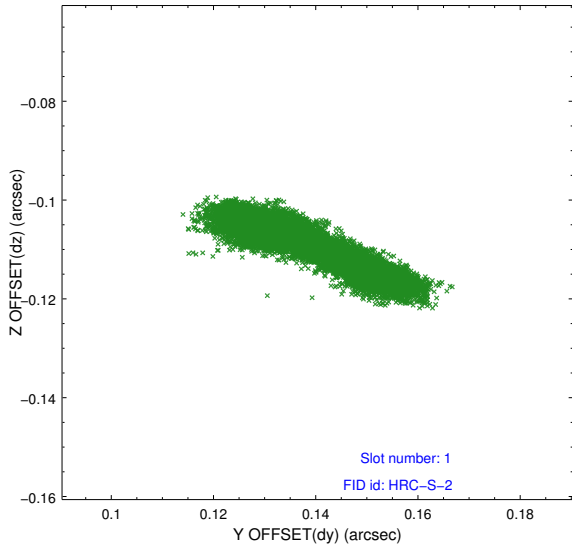


## 2.5 FID Slots

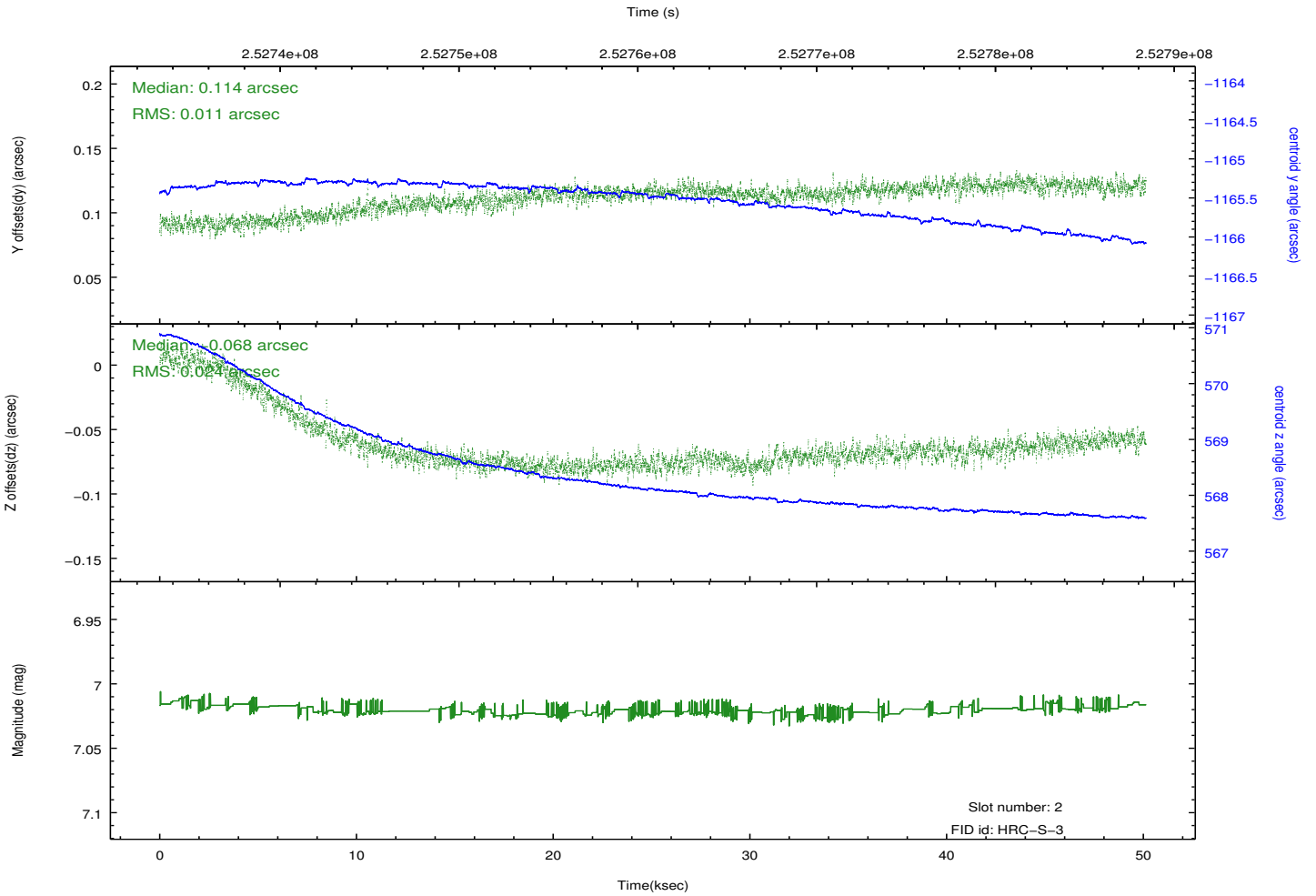
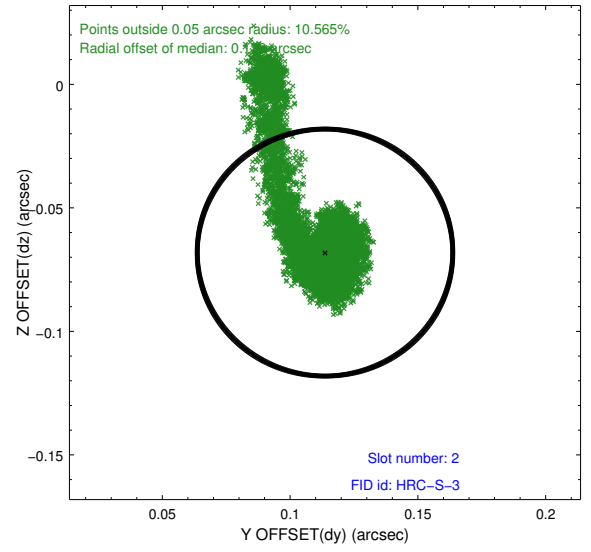
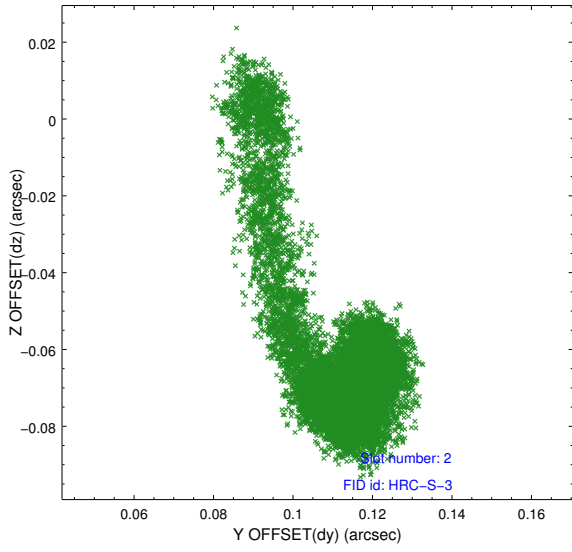
### 2.5.1 Slot 0



## 2.5.2 Slot 1



### 2.5.3 Slot 2



# A Summary

## A.1 Status

V&V Scientist	Beth Sundheim
V&V Date (YYYY-MM-DD)	2013.07.01
V&V Edition	1
V&V Disposition and Status	OK
V&V Charge Time	50.13403

## A.2 Comments