

# V&V Reference Report

## L2 ASCDS Version : 8.1.2

Observation 625 - L2 Version 5  
Chandra X-Ray Center

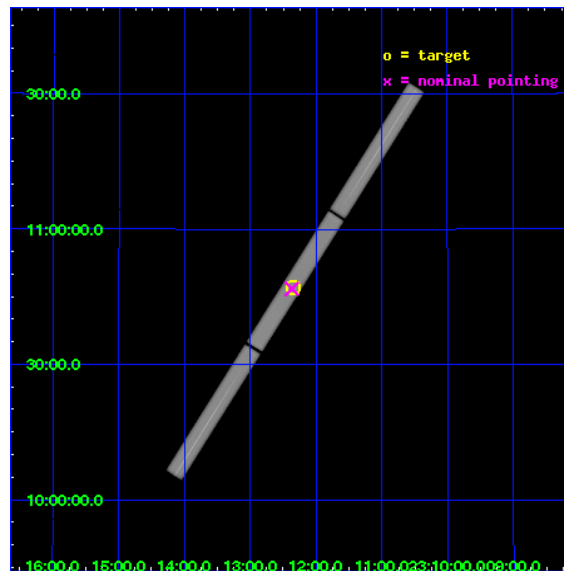
L2 Processing Date : Dec 2 2009

## Contents

<b>1</b>	<b>Front</b>	<b>2</b>
<b>2</b>	<b>OBI</b>	<b>3</b>
2.1	OBI . . . . .	3
2.1.1	Images . . . . .	3
2.1.2	Parameters . . . . .	4
2.1.3	Events . . . . .	4
2.2	Compared Parameters . . . . .	5
2.3	Aspect . . . . .	6
2.4	Star Slots . . . . .	9
2.4.1	Slot 3 . . . . .	9
2.4.2	Slot 4 . . . . .	10
2.4.3	Slot 5 . . . . .	11
2.4.4	Slot 6 . . . . .	12
2.4.5	Slot 7 . . . . .	13
2.5	FID Slots . . . . .	14
2.5.1	Slot 0 . . . . .	14
2.5.2	Slot 1 . . . . .	15
2.5.3	Slot 2 . . . . .	16
<b>3</b>	<b>Gratings</b>	<b>17</b>
3.1	LETG Arm . . . . .	17
<b>A</b>	<b>Summary</b>	<b>19</b>
A.1	Status . . . . .	19
A.2	Comments . . . . .	19

# 1 Front

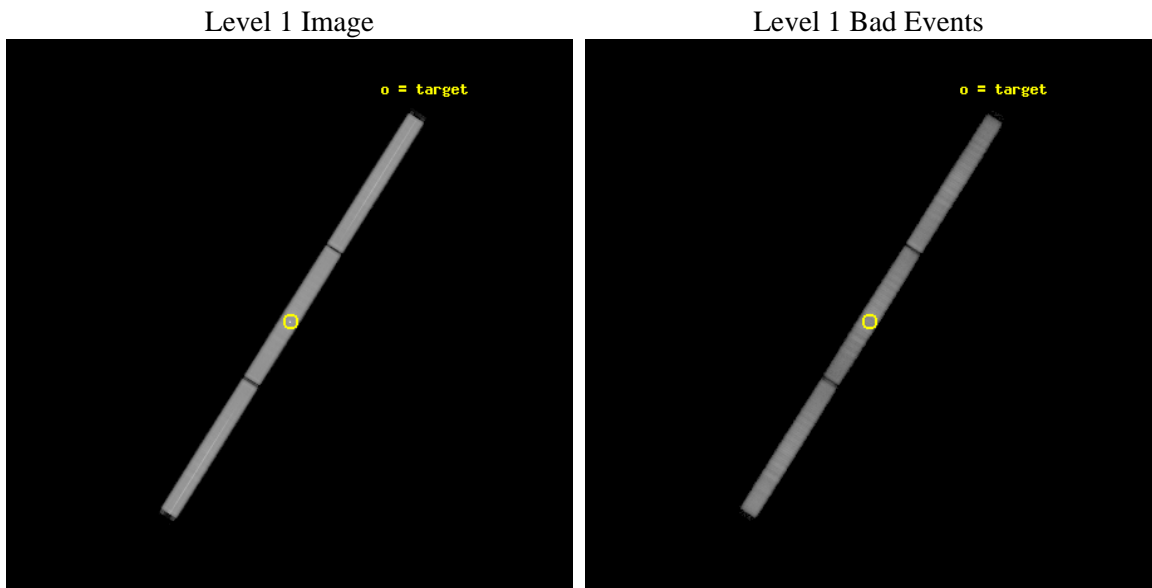
seq_num	200050	Sequence number
obs_id	625	Observation id
title	LETG OBSERVATION OF THE HOT WHITE DWARF GD 246	Proposal title
observer	DR. Jean Dupuis	Principal investigator
object	GD 246	Source name
ra_targ	348.089167	Observer's specified target RA
dec_targ	10.784722	Observer's specified target Dec
ra_nom	348.09165332513	Nominal RA
dec_nom	10.780197397273	Nominal Dec
roll_nom	302.29321935042	Nominal Roll
revision	5	Processing version of data
ontime	40171.032709338	[s]
livetime	39883.701815883	Ontime multiplied by DTCOR
l2events	2095828	Number of level 2 events



## 2 OBI

### 2.1 OBI

#### 2.1.1 Images



## 2.1.2 Parameters

obi_num	0	Obi number	sched_exp_time	40000.000000	Scheduled observation exposure time
ascdsver	8.1.2	Processing system revision	ontime	40171.032709338	[s]
caldbver	4.1.4	&#160	ll events	3206487	Number of level 1 events
date	2009-12-02T15:29:38	Date and time of file creation			
revision	5	Processing version of data			

## 2.1.3 Events

### Level 1 Events

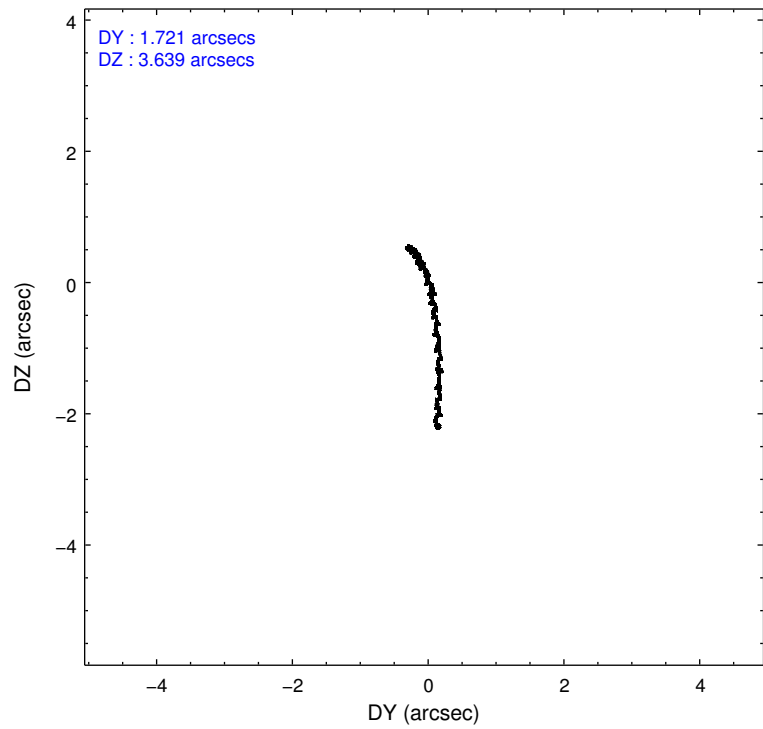
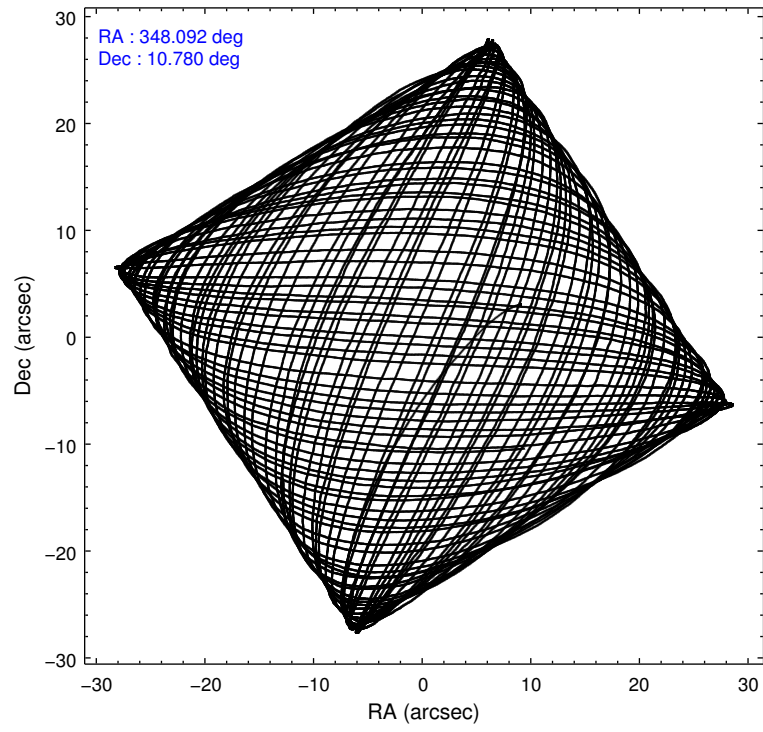
	<b>segment 1</b>	<b>segment 2</b>	<b>segment 3</b>
level 1 events	1095075	1016366	1095046
rejected events	254815	272042	310648
rejected %	23%	26%	28%

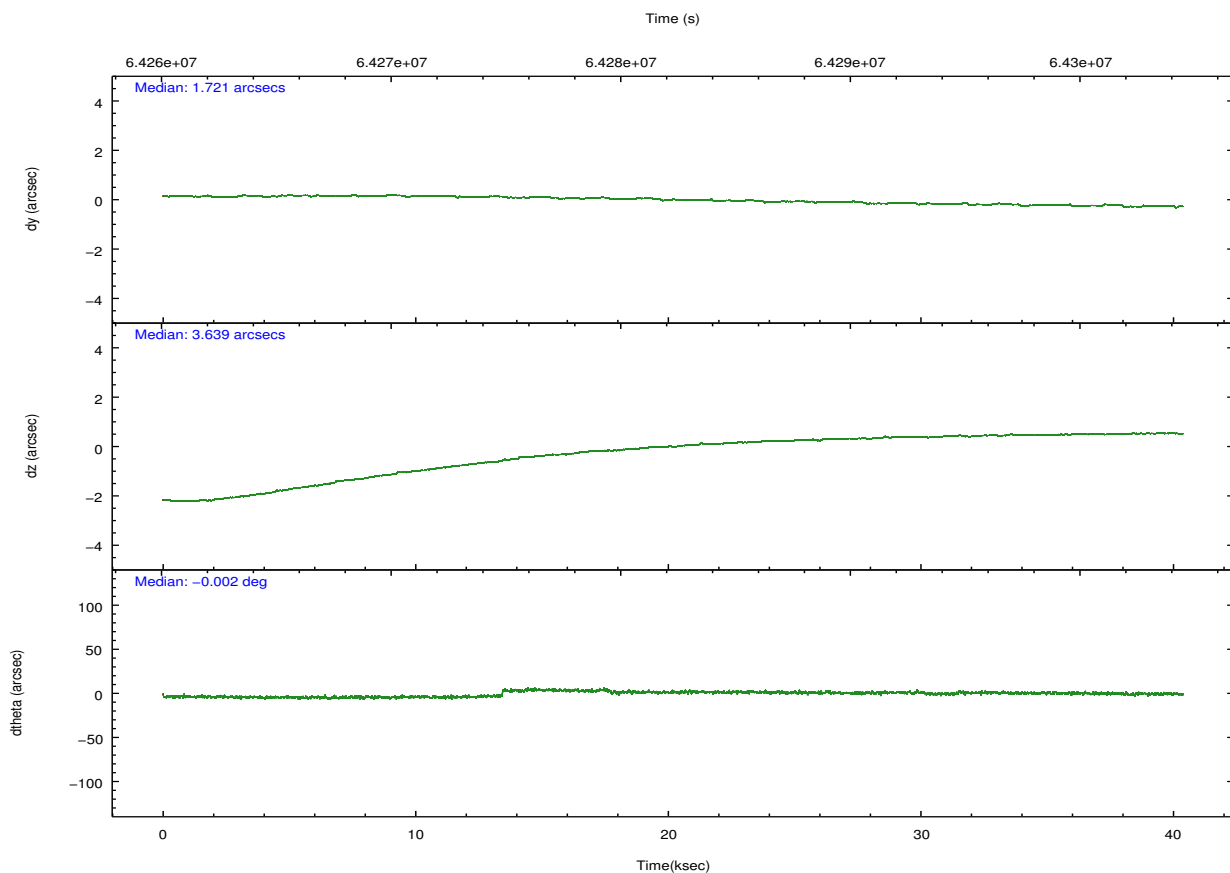
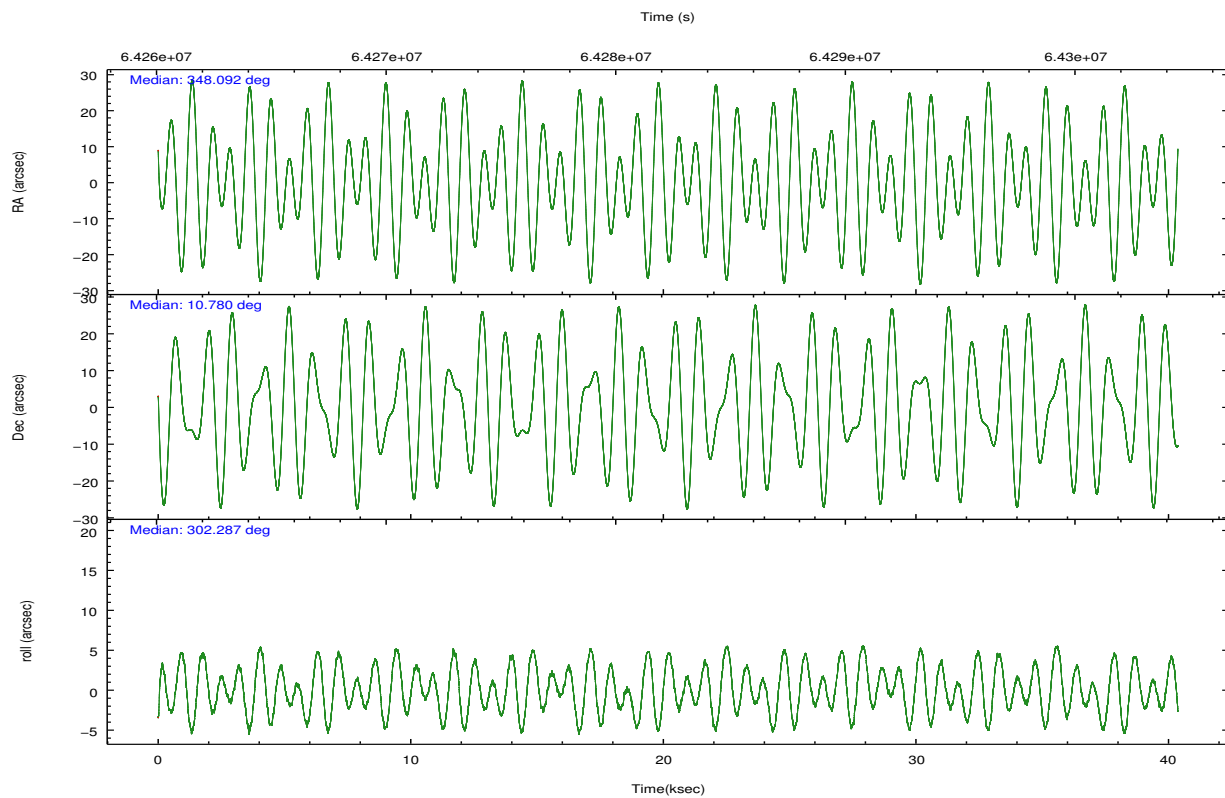
## 2.2 Compared Parameters

Parameter	Planned	Actual
Instrument	HRC	HRC
Detector	HRC-S	HRC-S
Grating	LETG	LETG
Data mode	OBSERVING	OBSERVING
Observation mode	POINTING	POINTING
Pointing RA	348.065176	348.091653325134
Pointing Dec	10.792718	10.78019739727266
Pointing Roll	302.230838	302.2932193504157
SIM focus pos (mm)	-1.429586	-1.428180813131781
SIM defocus (mm)	0.1037507710433287	0.1051558262725154
SIM translation stage pos (mm)	250.455976	250.466033080201
SIM translation stage offset (mm)	0	-0.01005468664627074
Observation start time	64262464.184000	64261043.053539
Observation start date	2000-01-14T18:40:00	2000-01-14T18:17:23
Observation end time	64302464.184000	64304062.817602
Observation end date	2000-01-15T05:46:40	2000-01-15T06:14:22

Parameter	Planned	Actual
Obspar format version number	6	6
Obspar file type	PREDICTED	ACTUAL
Obspar update status	NONE	UPDATED

## 2.3 Aspect



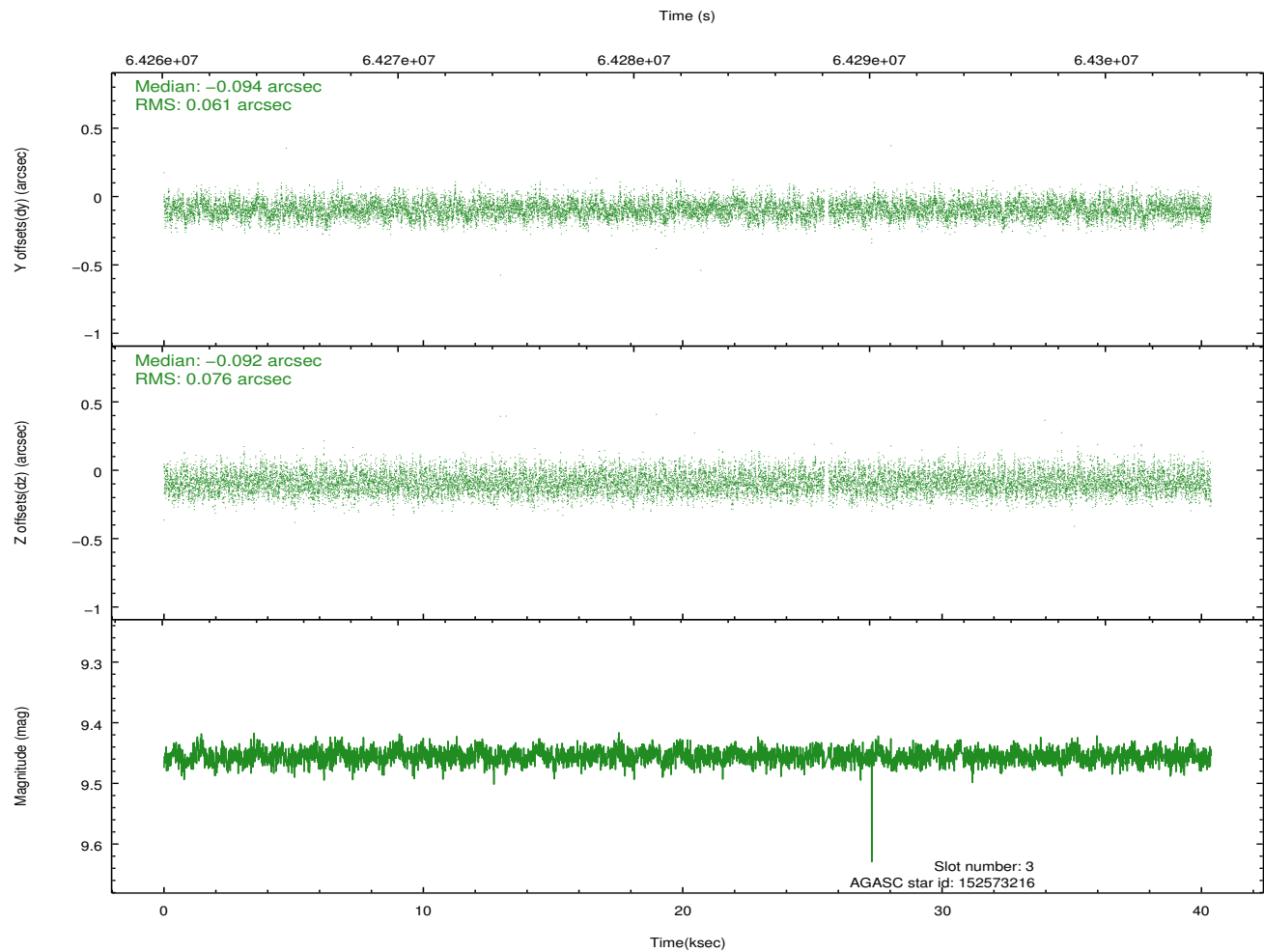
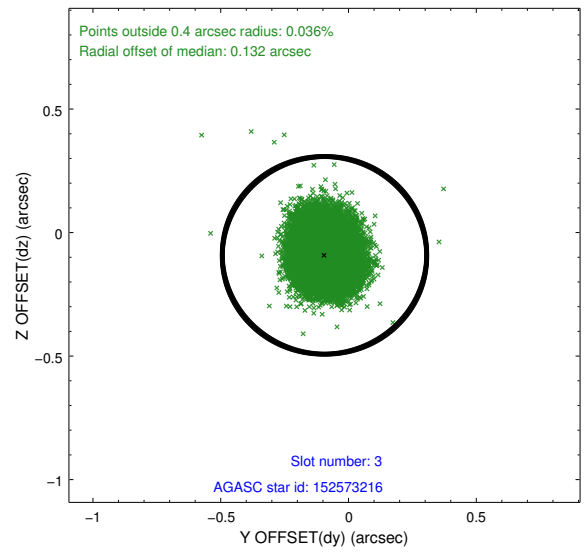
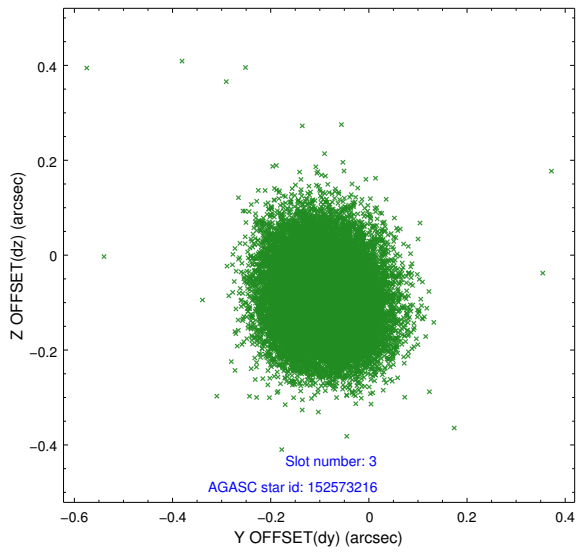


### Slot Statistics

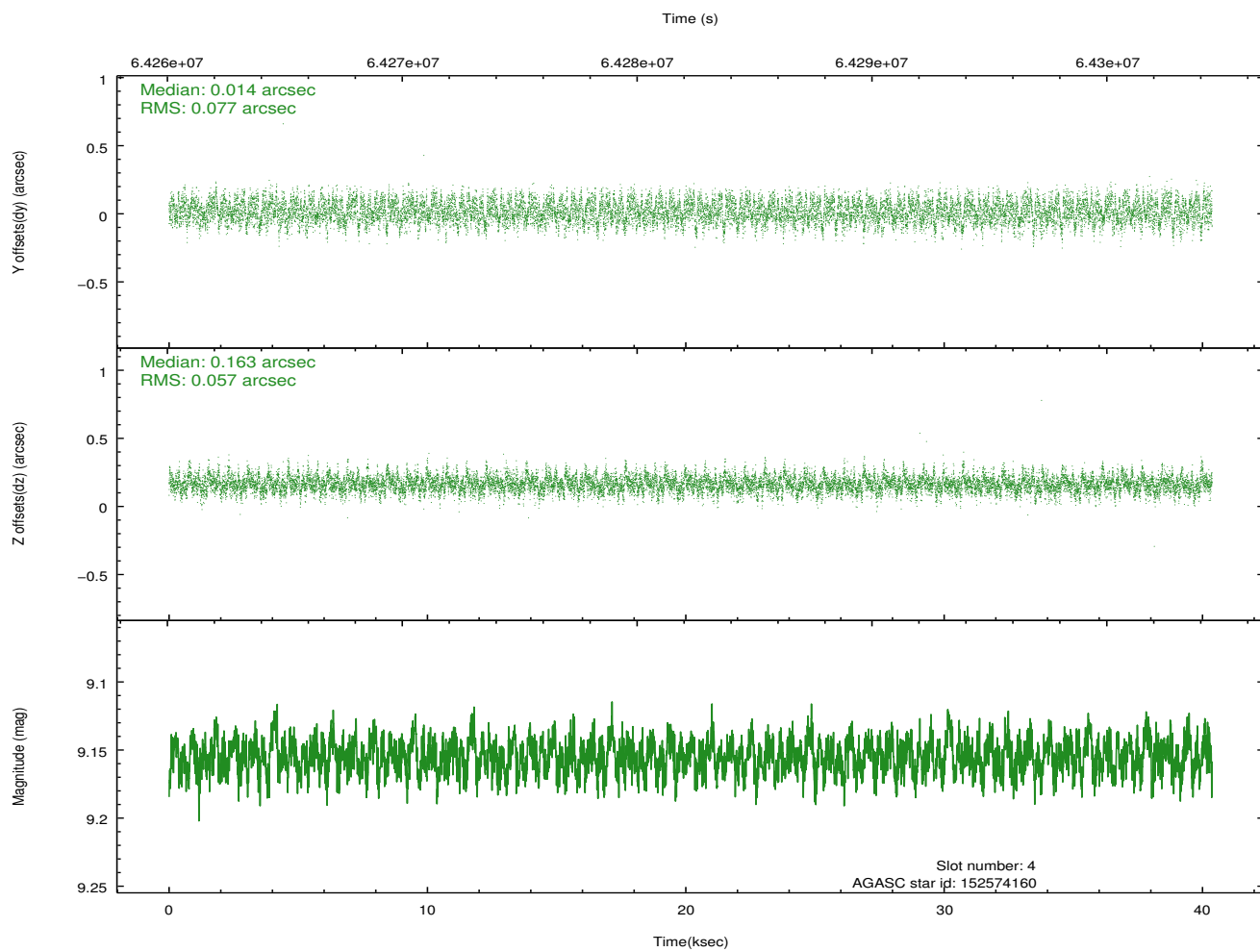
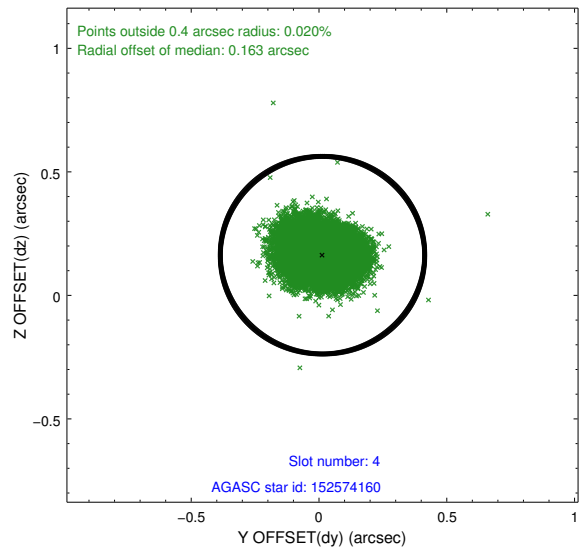
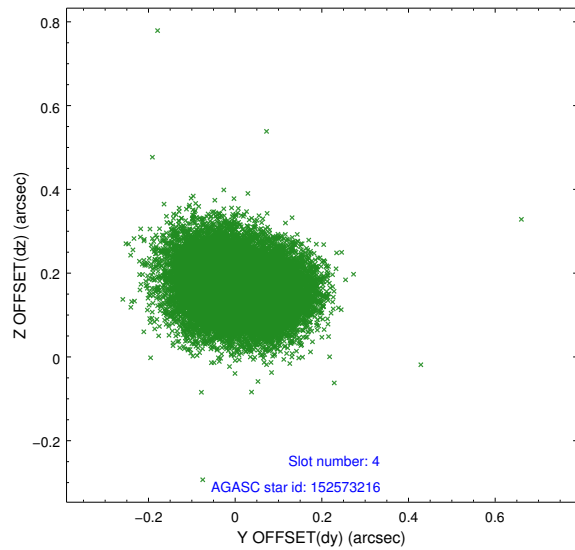
slot	status	id	mag	n_pts	med_dy	med_dz	dr1	dr2	ra	dec	mean_y	mean_z
0	FID	HRC-S-1	6.99	9848	0.122	-0.082	0.027	0.037	0.000000	0.000000	-1155.75	-451.66
1	FID	HRC-S-3	7.01	9848	0.146	-0.118	0.025	0.038	0.000000	0.000000	-1158.54	577.78
2	FID	HRC-S-4	6.95	9847	0.127	-0.097	0.022	0.030	0.000000	0.000000	1242.42	580.42
3	GUIDE	152573216	9.46	19606	-0.094	-0.092	0.104	0.166	347.401633	10.722256	-1039.34	-2119.57
4	GUIDE	152574160	9.15	19681	0.014	0.163	0.103	0.163	348.675726	10.729961	1340.75	1707.68
5	GUIDE	152577960	9.38	19686	0.156	0.021	0.084	0.140	348.287236	10.671290	788.58	431.77
6	GUIDE	152580576	9.50	19685	0.052	-0.180	0.086	0.140	347.847510	10.269883	1180.89	-1655.96
7	GUIDE	152576216	9.60	19685	-0.127	0.082	0.127	0.199	348.218671	11.590713	-2141.97	1990.01

## 2.4 Star Slots

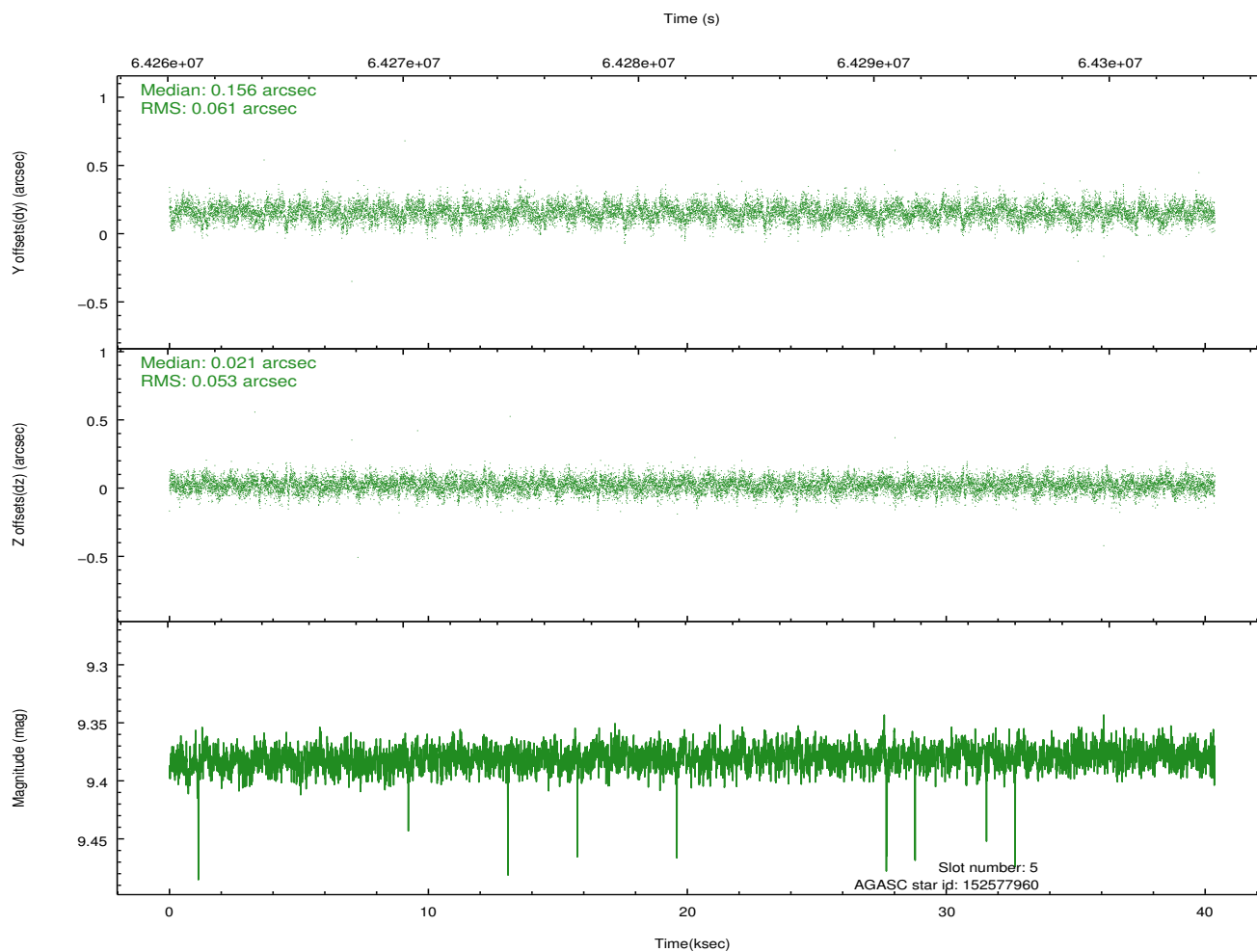
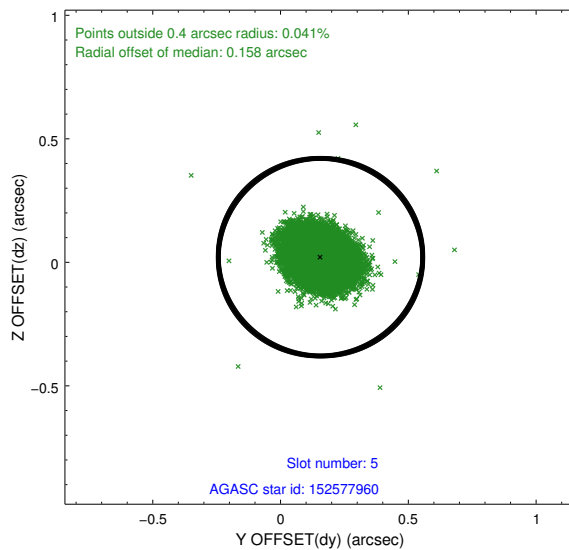
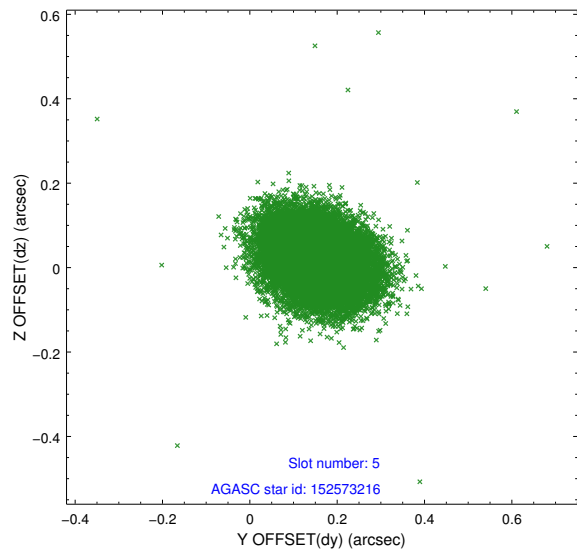
### 2.4.1 Slot 3



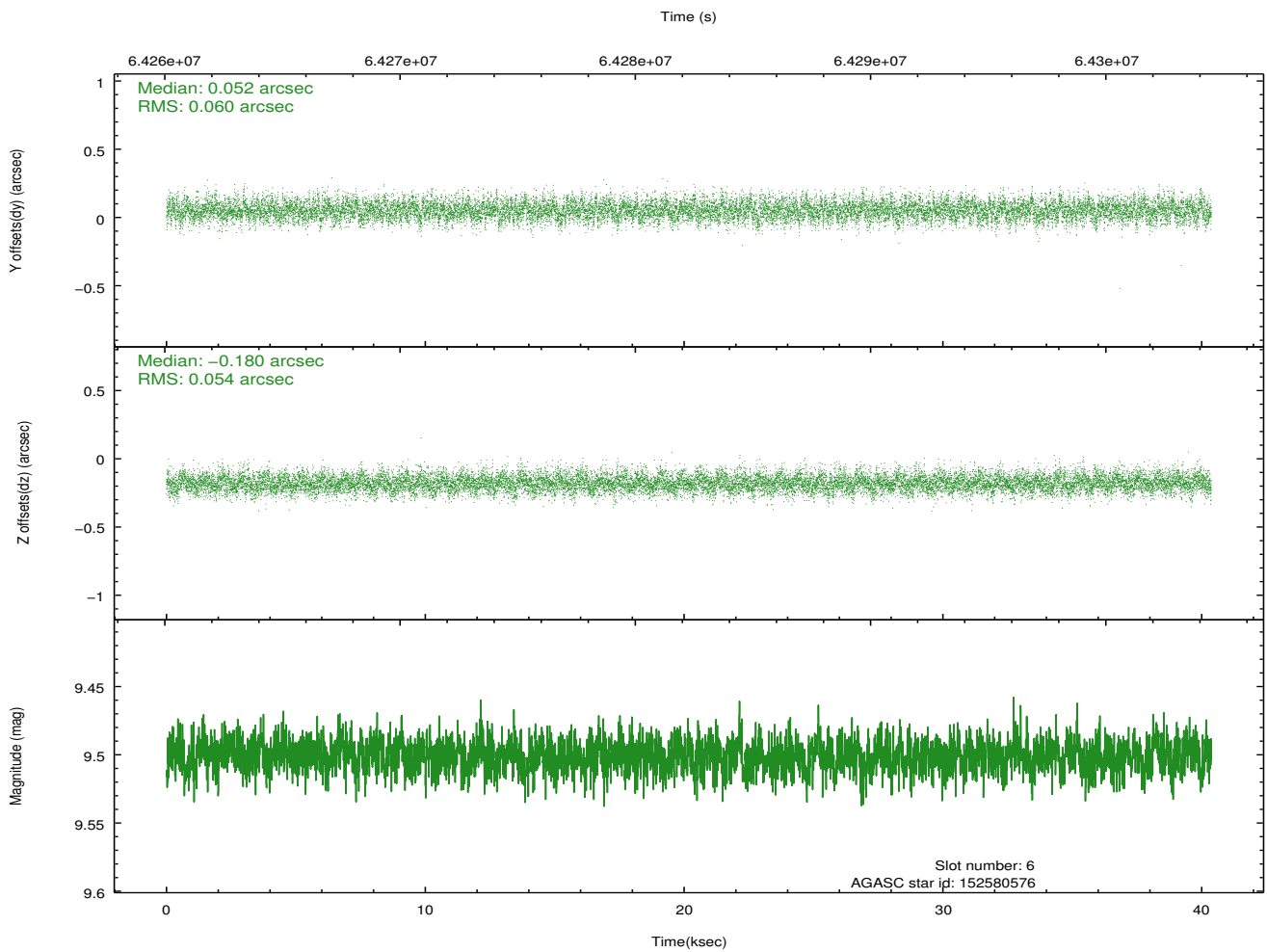
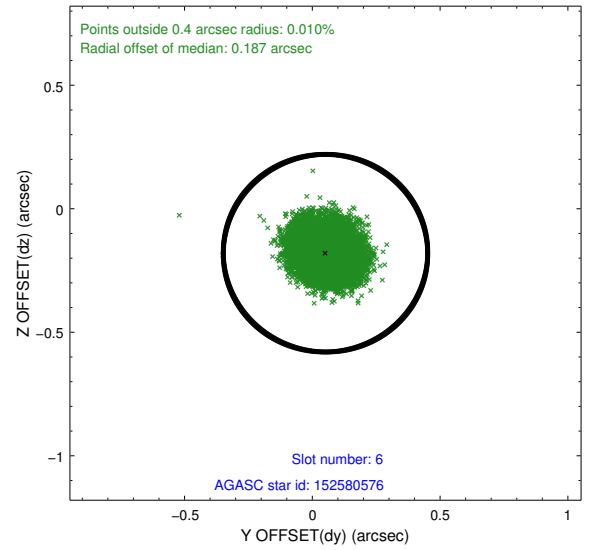
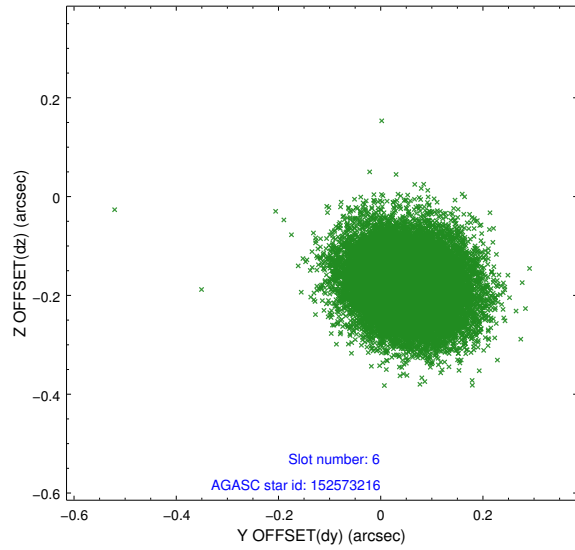
## 2.4.2 Slot 4



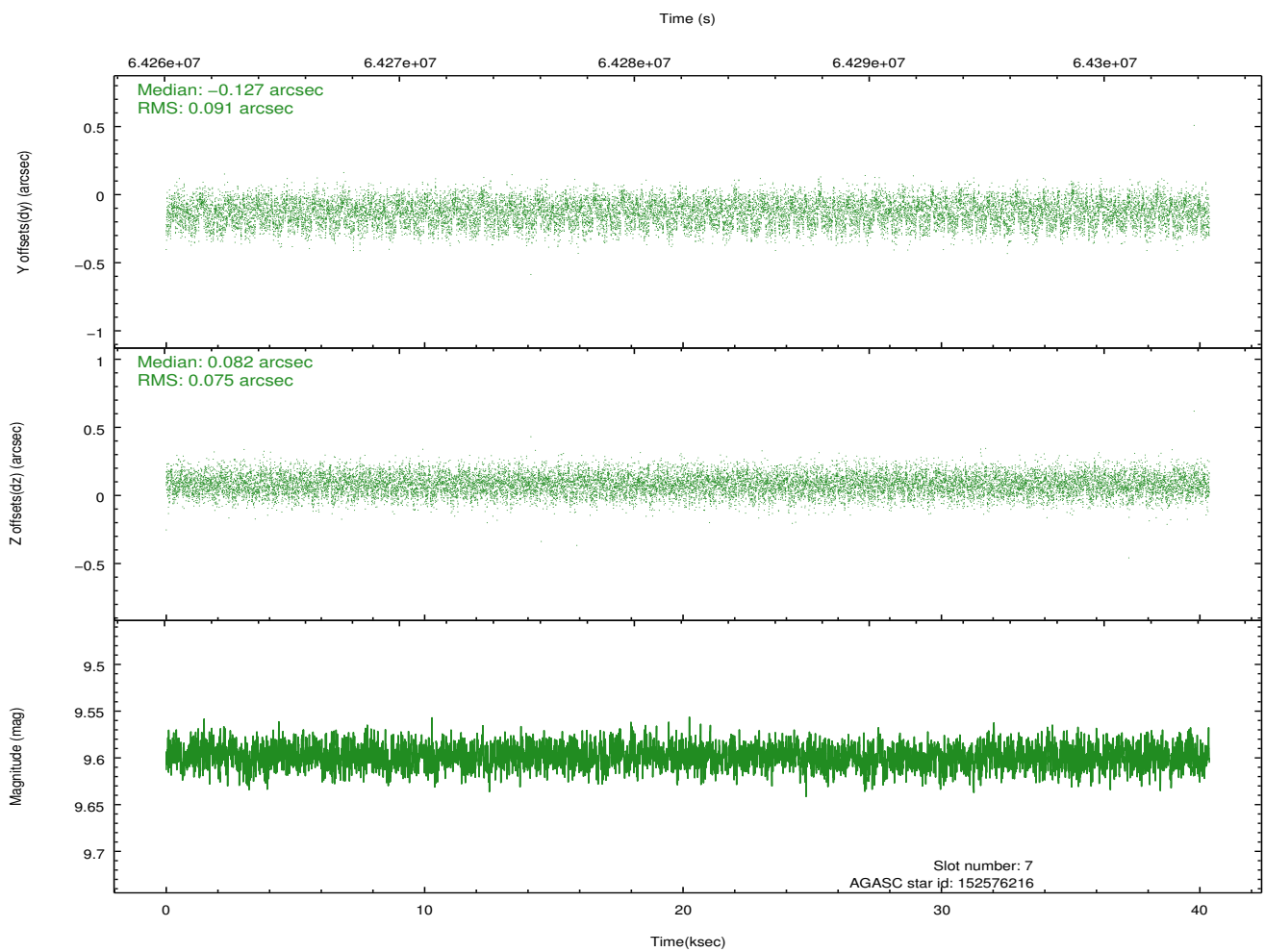
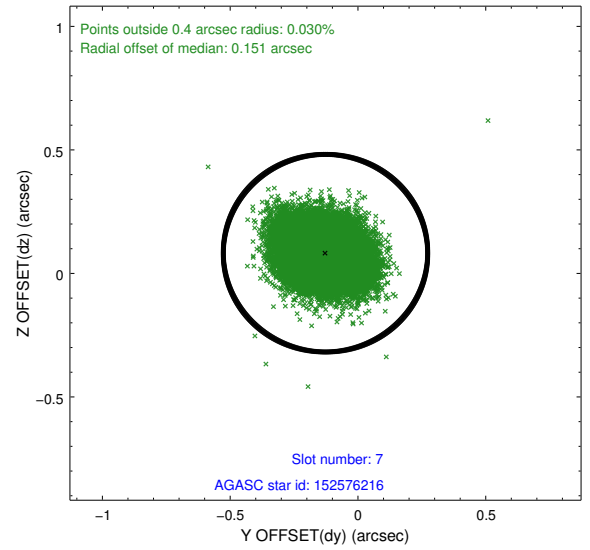
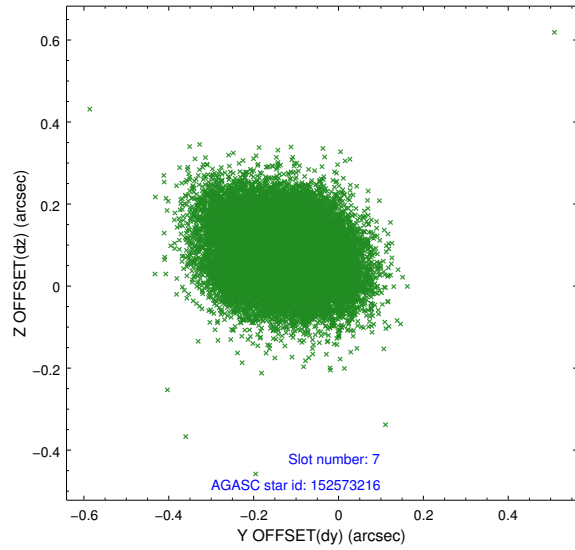
### 2.4.3 Slot 5



## 2.4.4 Slot 6

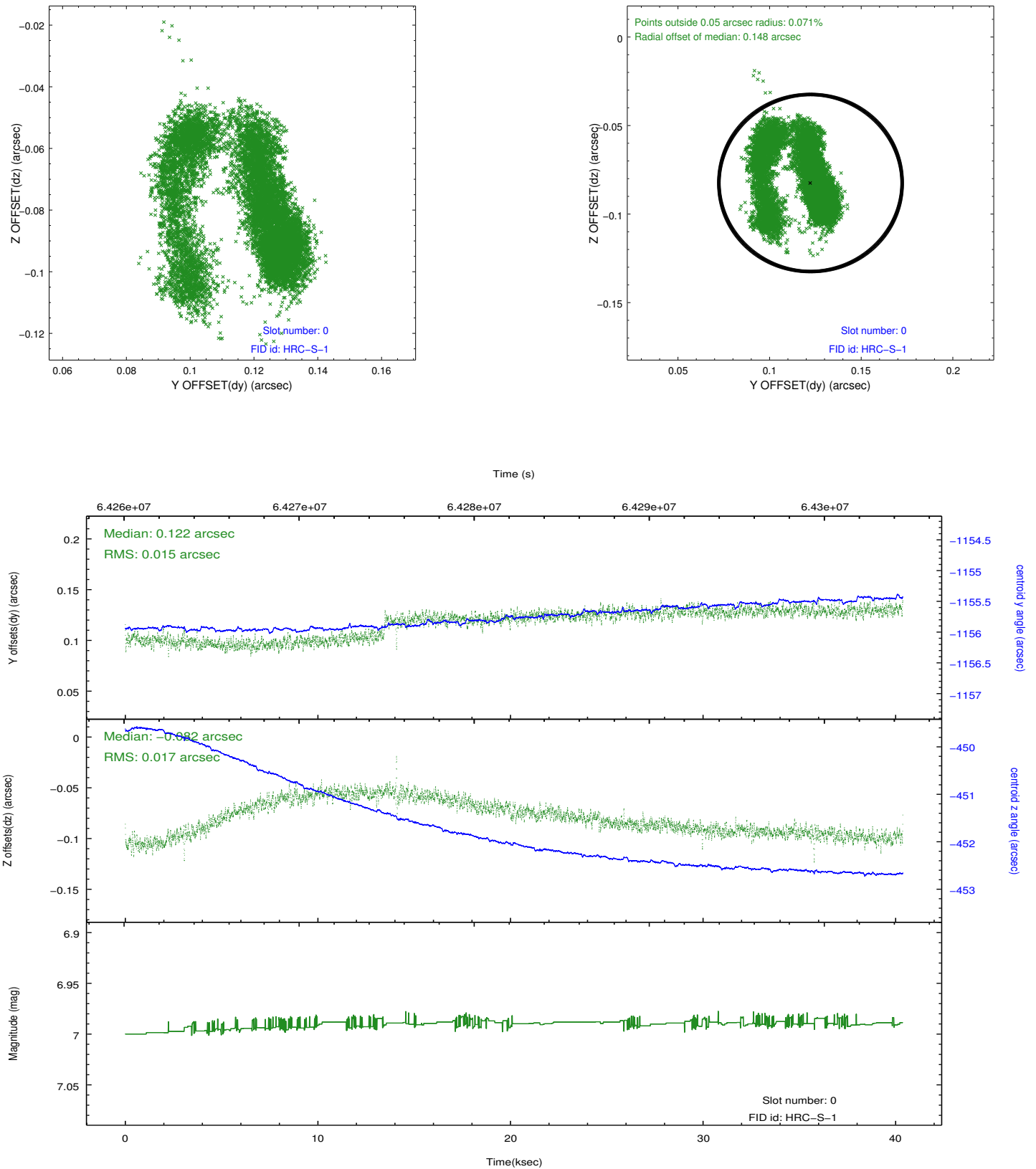


## 2.4.5 Slot 7

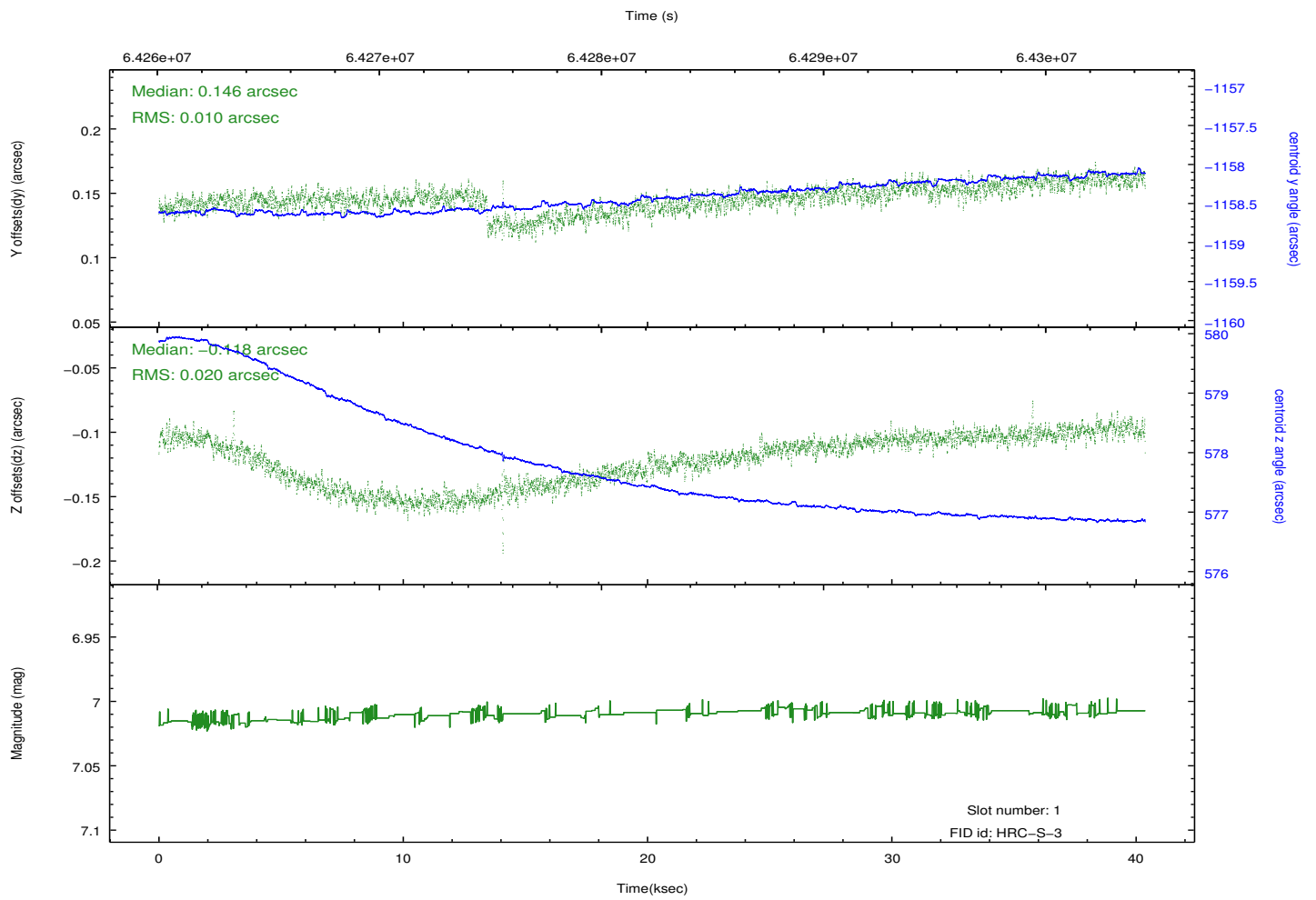
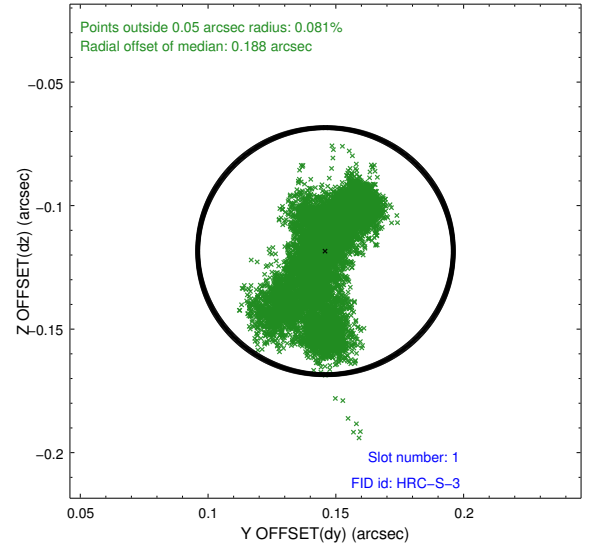
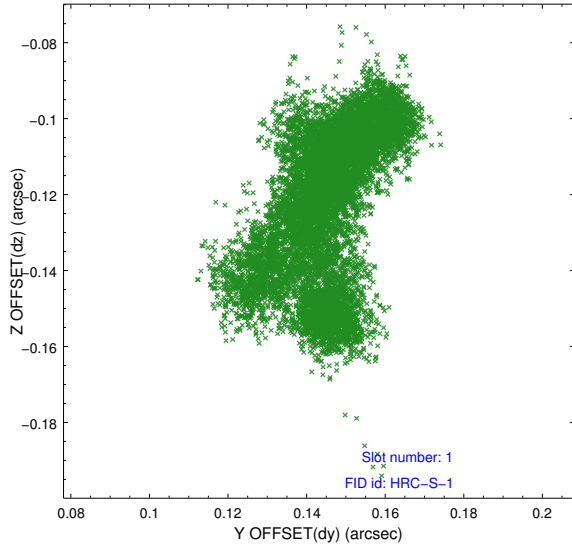


## 2.5 FID Slots

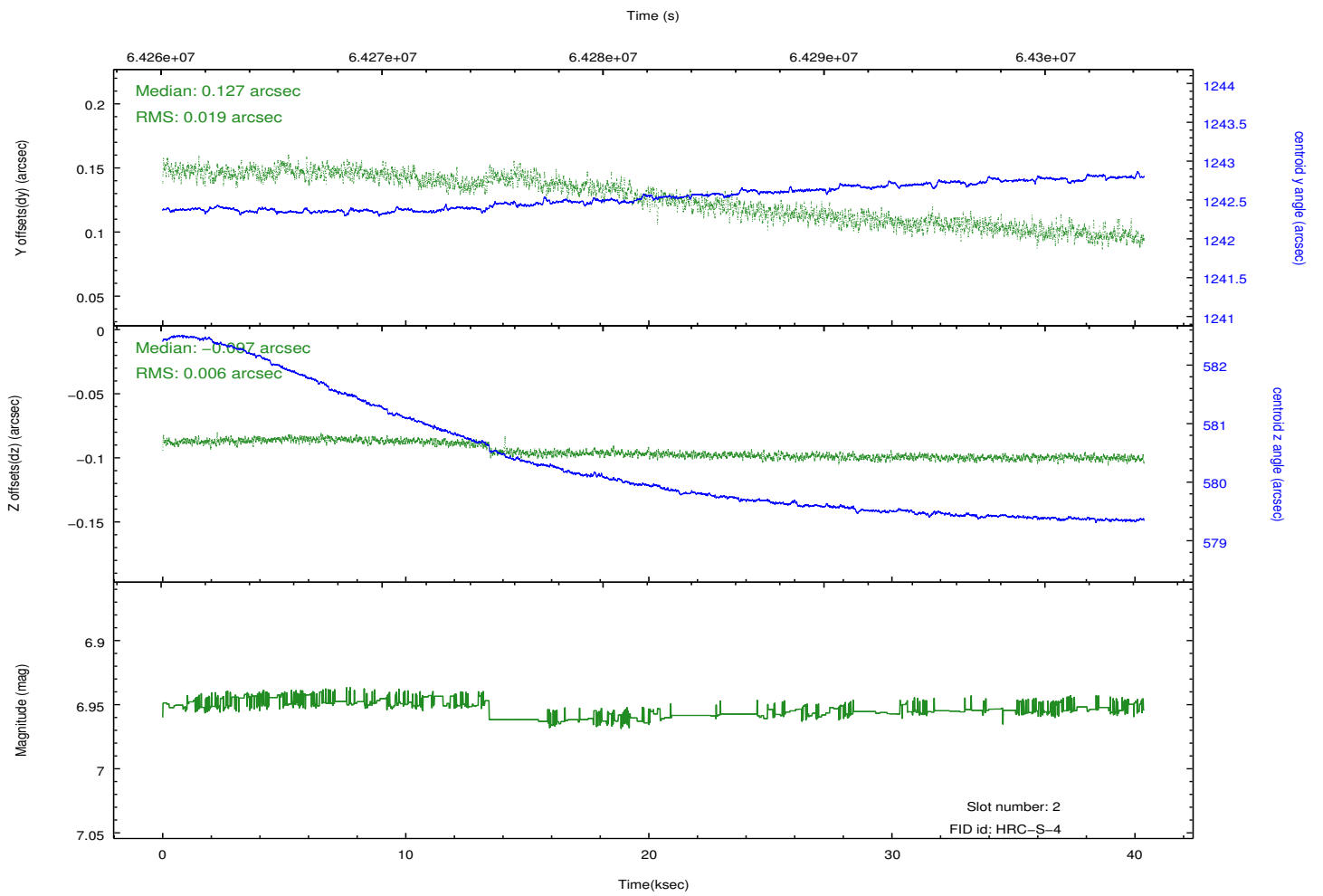
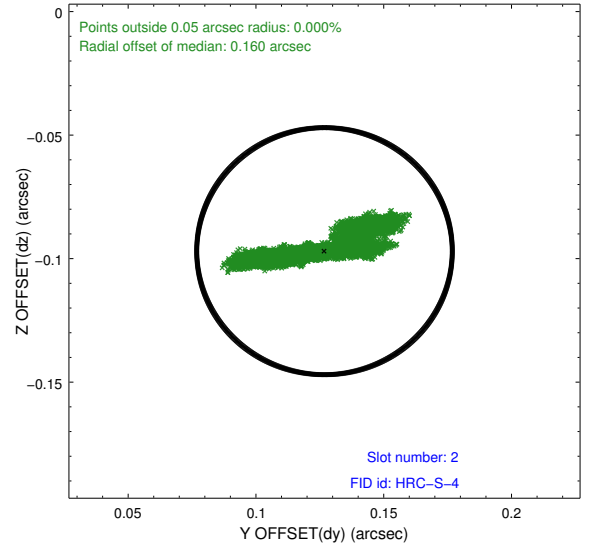
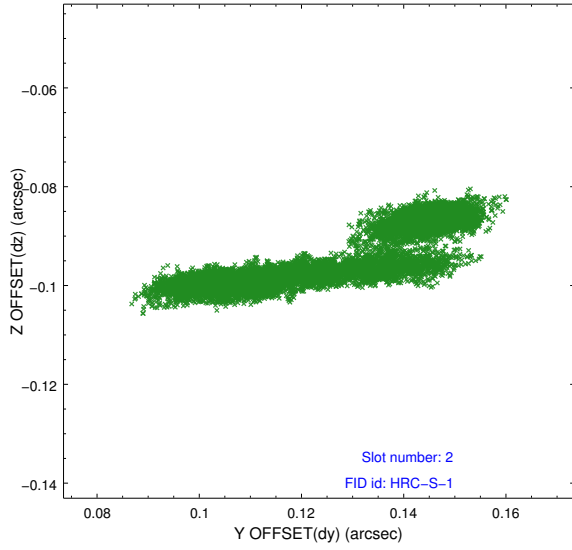
### 2.5.1 Slot 0



## 2.5.2 Slot 1

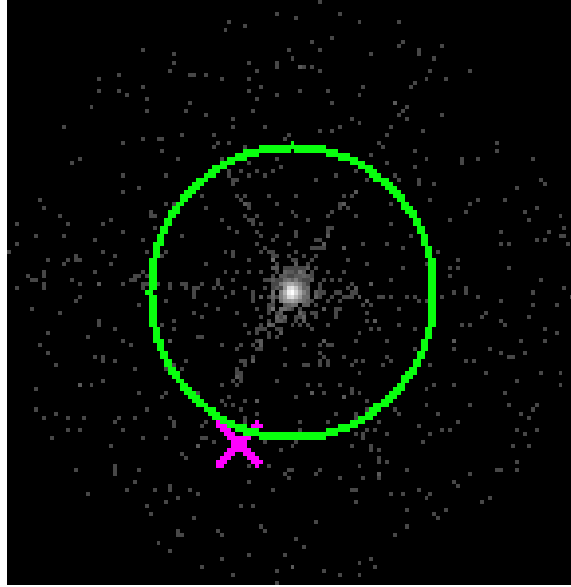


### 2.5.3 Slot 2

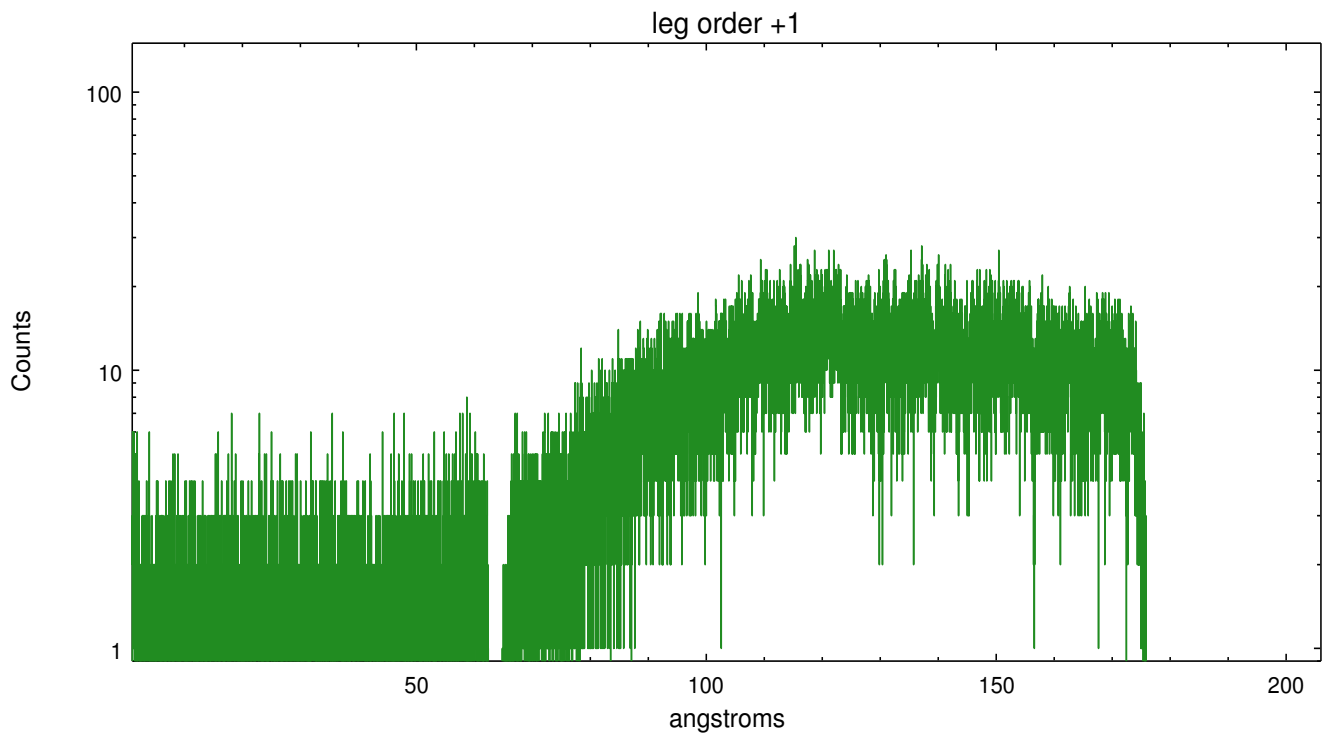
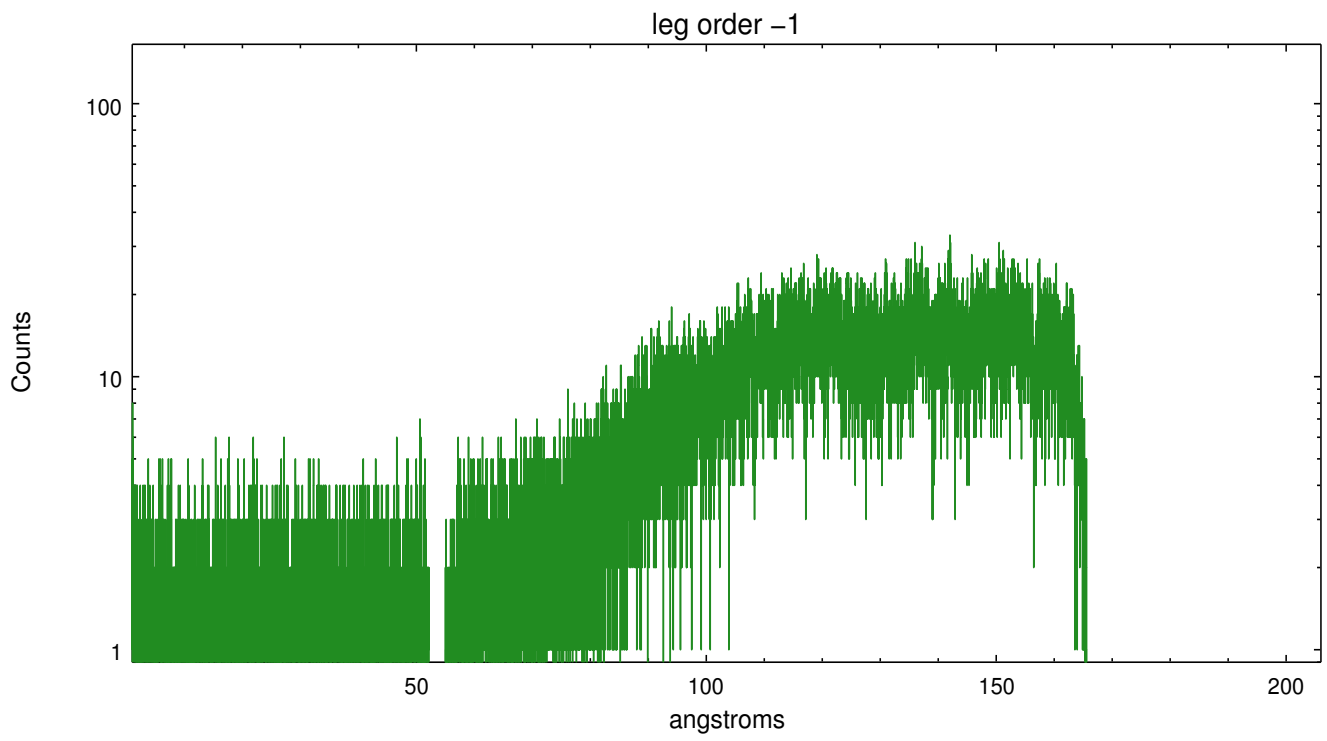


### 3 Gratings

#### 3.1 LETG Arm



LETG Zero Order



# A Summary

## A.1 Status

V&V Scientist	Joy Nichols
V&V Date (YYYY-MM-DD)	2010.04.16
V&V Edition	1
V&V Disposition and Status	OK
V&V Charge Time	40.158

## A.2 Comments