

V&V Reference Report

L2 ASCDS Version : 8.5.1.1

Observation 6265 - L2 Version 3
Chandra X-Ray Center

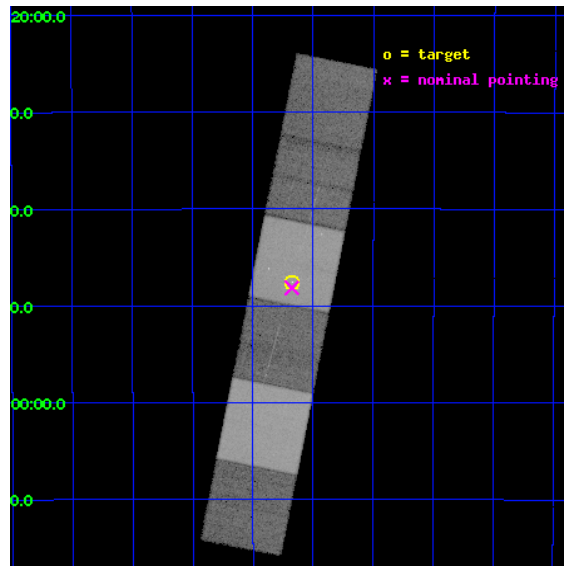
L2 Processing Date : Dec 27 2012

Contents

1	Front	2
2	OBI	3
2.1	OBI	3
2.1.1	Images	3
2.1.2	Bias	3
2.1.3	Parameters	4
2.1.4	Events	4
2.2	Compared Parameters	5
2.3	Aspect	6
2.4	Star Slots	9
2.4.1	Slot 3	9
2.4.2	Slot 4	10
2.4.3	Slot 5	11
2.4.4	Slot 6	12
2.4.5	Slot 7	13
2.5	FID Slots	14
2.5.1	Slot 0	14
2.5.2	Slot 1	15
2.5.3	Slot 2	16
3	Gratings	17
3.1	HEG Arm	17
3.2	MEG Arm	19
A	Summary	21
A.1	Status	21
A.2	Comments	21

1 Front

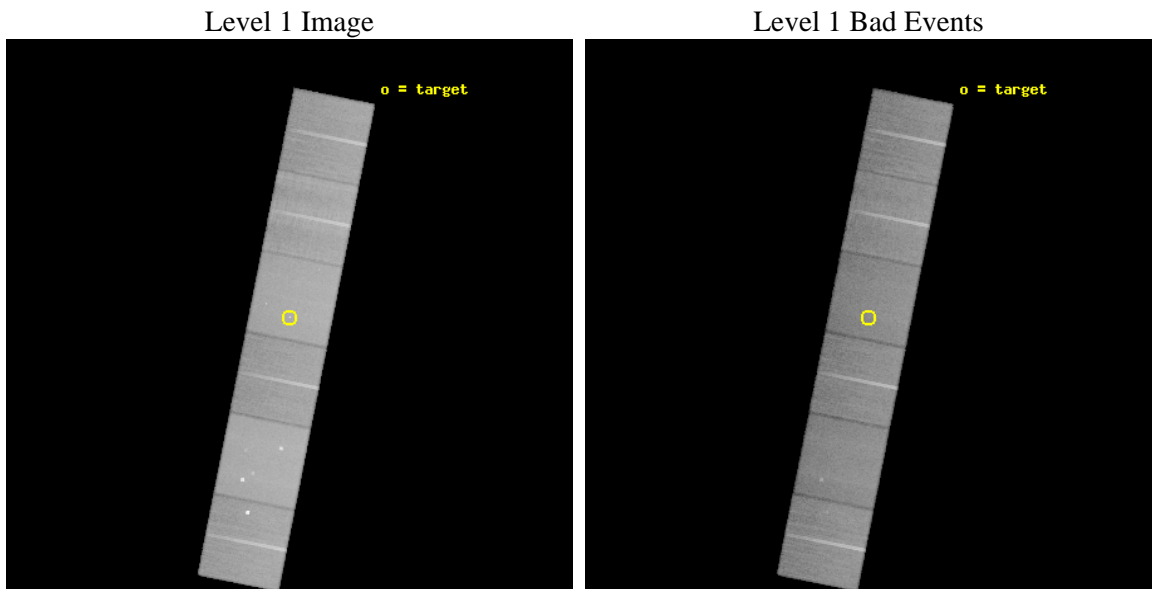
seq_num	200356	Sequence number
obs_id	6265	Observation id
title	The Production of X-ray Emission in Classical Tauri Stars	Propos
observer	Dr. Gregory Herczeg	Principal investigator
object	V4046 Sgr	Source name
dtycycle	0	
cycle	P	events from which exps? Prim/Second/Both
ra_targ	273.54375	Observer's specified target RA [deg]
dec_targ	-32.792917	Observer's specified target Dec [deg]
ra_nom	273.54400776771	Nominal RA [deg]
dec_nom	-32.802594222148	Nominal Dec [deg]
roll_nom	281.29057488871	Nominal Roll [deg]
revision	3	Processing version of data
ontime	46456.169252634	Sum of GTIs [s]
livetime	45867.91326501	Livetime [s]
ontime4	46456.210292637	Sum of GTIs [s]
ontime5	46456.128212631	Sum of GTIs [s]
ontime6	46456.087172627	Sum of GTIs [s]
ontime7	46456.169252634	Sum of GTIs [s]
ontime8	46456.046132624	Sum of GTIs [s]
ontime9	46452.764092475	Sum of GTIs [s]
l2events	530356	Number of level 2 events



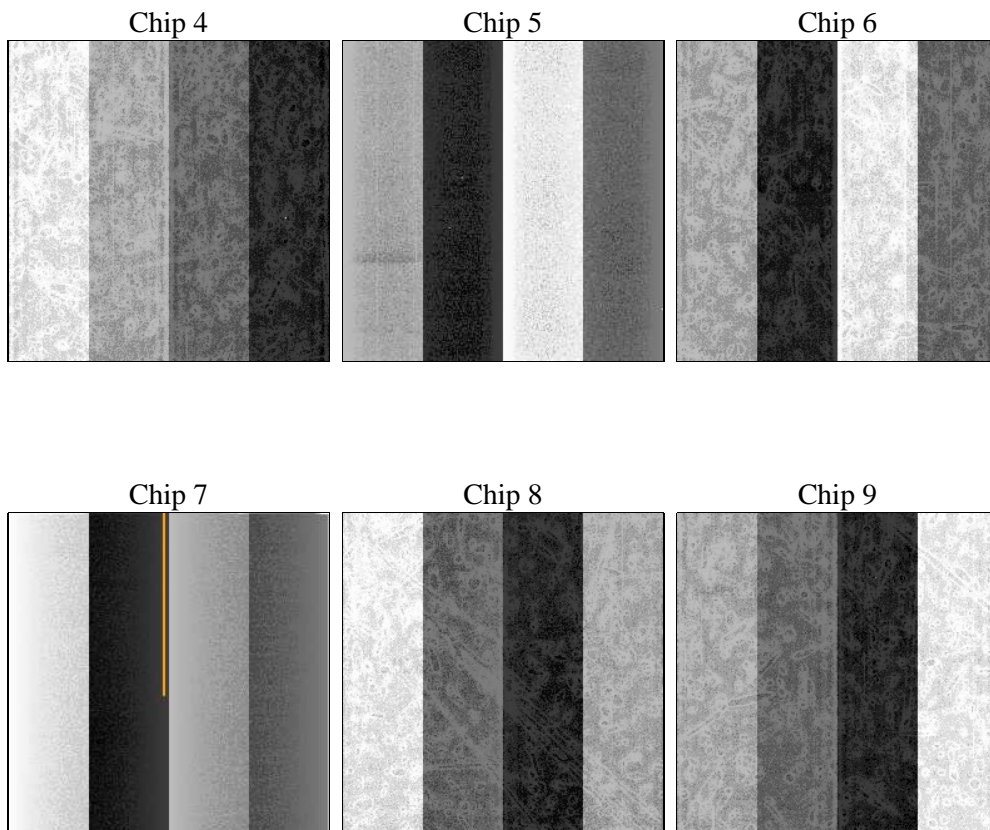
2 OBI

2.1 OBI

2.1.1 Images



2.1.2 Bias



2.1.3 Parameters

obi_num	0	Obi number	sched_exp_time	46500.000000	[s] Scheduled observation exposure time
ascdsver	8.5.1.1	Processing system revision	ontime	46456.169252634	Sum of GTIs [s]
caldbver	4.5.5	 	ontime4	46456.210292637	Sum of GTIs [s]
date	2012-12-27T06:31:47	Date and time of file creation	ontime5	46456.128212631	Sum of GTIs [s]
revision	3	Processing version of data	ontime6	46456.087172627	Sum of GTIs [s]
			ontime7	46456.169252634	Sum of GTIs [s]
			ontime8	46456.046132624	Sum of GTIs [s]
			ontime9	46452.764092475	Sum of GTIs [s]
			l1events	2382468	Number of level 1 events

2.1.4 Events

	ccd 4	ccd 5	ccd 6	ccd 7	ccd 8	ccd 9		ccd 4	ccd 5	ccd 6	ccd 7	ccd 8	ccd 9
level 1 events	374563	493784	327651	448136	412467	325867	grade 0 events	28365	22059	15887	16536	28100	16553
rejected events	323047	269615	287636	262660	324503	285770		7%	4%	4%	3%	6%	5%
rejected %	86%	54%	87%	58%	78%	87%	grade 1 events	352	1349	157	436	287	185
								0%	0%	0%	0%	0%	0%
							grade 2 events	8411	67110	8461	37007	19305	7875
								2%	13%	2%	8%	4%	2%
							grade 3 events	4212	8178	3768	16235	9115	3932
								1%	1%	1%	3%	2%	1%
							grade 4 events	4008	7743	3722	16326	8527	3872
								1%	1%	1%	3%	2%	1%
							grade 5 events	14873	34861	15404	42726	20441	16548
								3%	7%	4%	9%	4%	5%
							grade 6 events	6521	119091	8181	99384	22919	7866
								1%	24%	2%	22%	5%	2%
							grade 7 events	307821	233393	272071	219486	303773	269036
								82%	47%	83%	48%	73%	82%

2.2 Compared Parameters

Parameter	Planned	Actual	Parameter	Planned	Actual
Instrument	ACIS	ACIS	Obspar format version number	7	7
Detector	ACIS-456789	ACIS-456789	Obspar file type	PREDICTED	ACTUAL
Grating	HETG	HETG	Obspar update status	NONE	UPDATED
Data mode	FAINT	FAINT	Number of optional ACIS chips dropped	0	0
Observation mode	POINTING	POINTING	On-chip summing requested	N	N
[deg] Pointing RA	273.522290	273.544007767713	Subarray requested	NONE	NONE
[deg] Pointing Dec	-32.782374	-32.80259422214787	Alternating exposures requested	N	N
[deg] Pointing Roll	281.122184	281.290574888705	[s] Primary exposure time	0.000000	3.2
[mm] SIM focus pos	-0.684267	-0.6828225247311905			
[mm] SIM defocus	0	0.001444936568705701			
[mm] SIM translation stage pos	-190.132523	-190.145094680475			
[mm] SIM translation stage offset	0	0.01257209746719923			
[s] Observation start time (MET)	239960927.184000	239959330.27741			
Observation start date	2005-08-09T07:47:43	2005-08-09T07:22:10			
[s] Observation end time (MET)	240007427.184000	240008450.32967			
Observation end date	2005-08-09T20:42:43	2005-08-09T21:00:50			
Read mode	TIMED	TIMED			

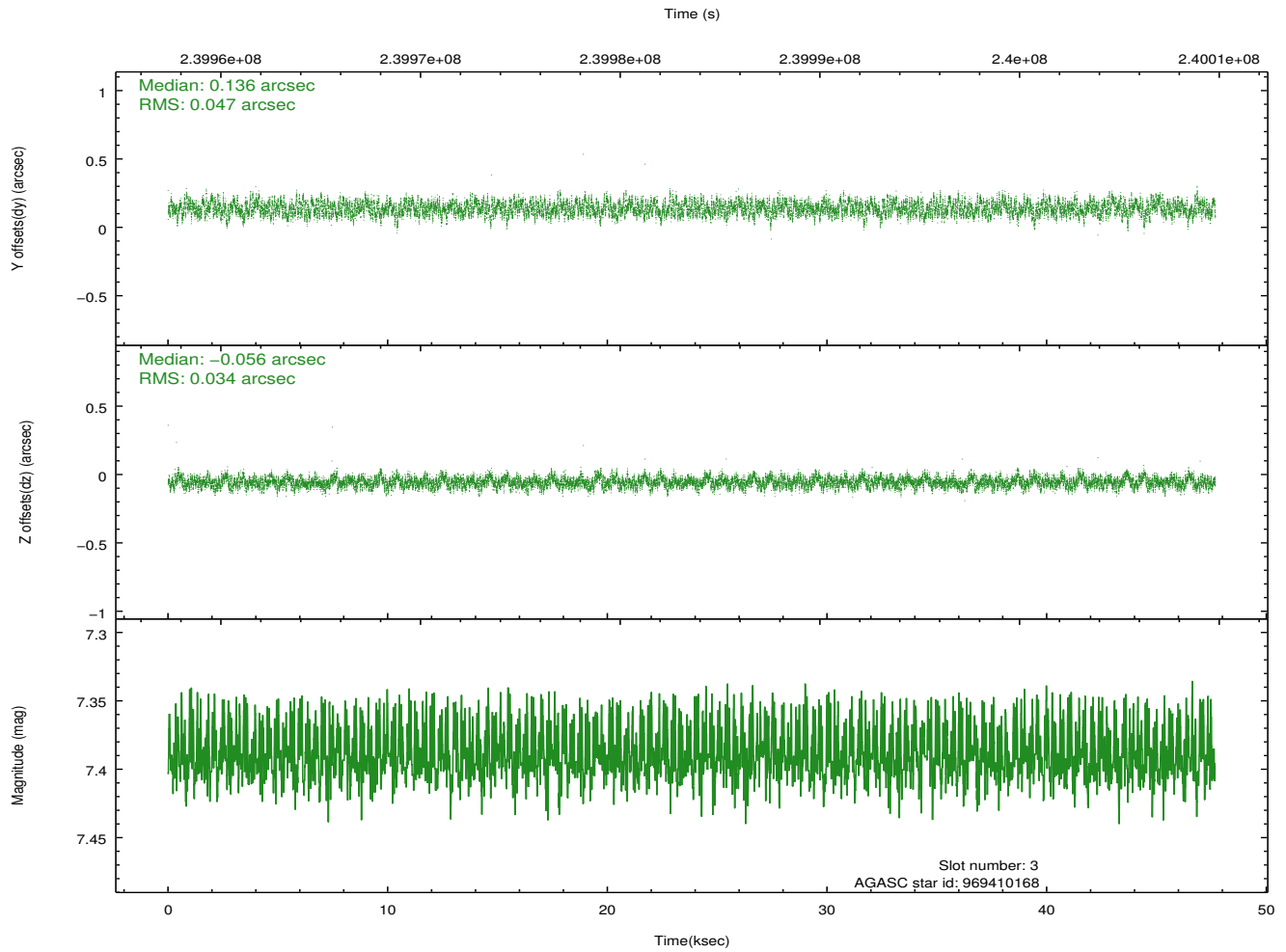
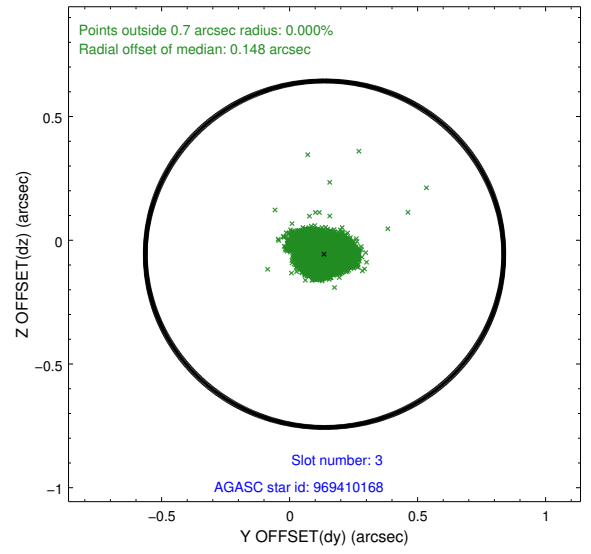
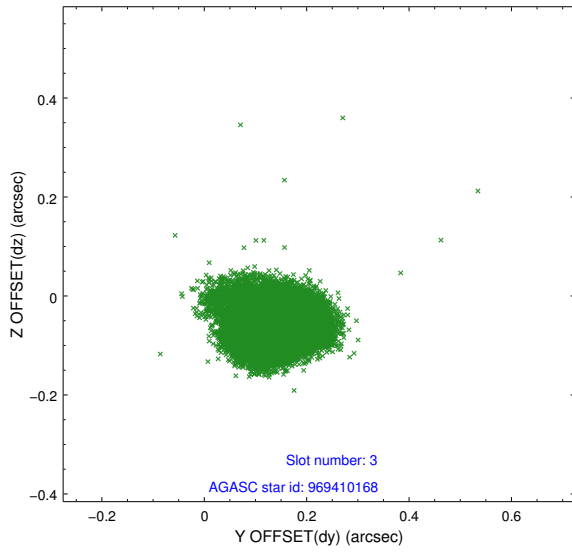
2.3 Aspect

Slot Statistics

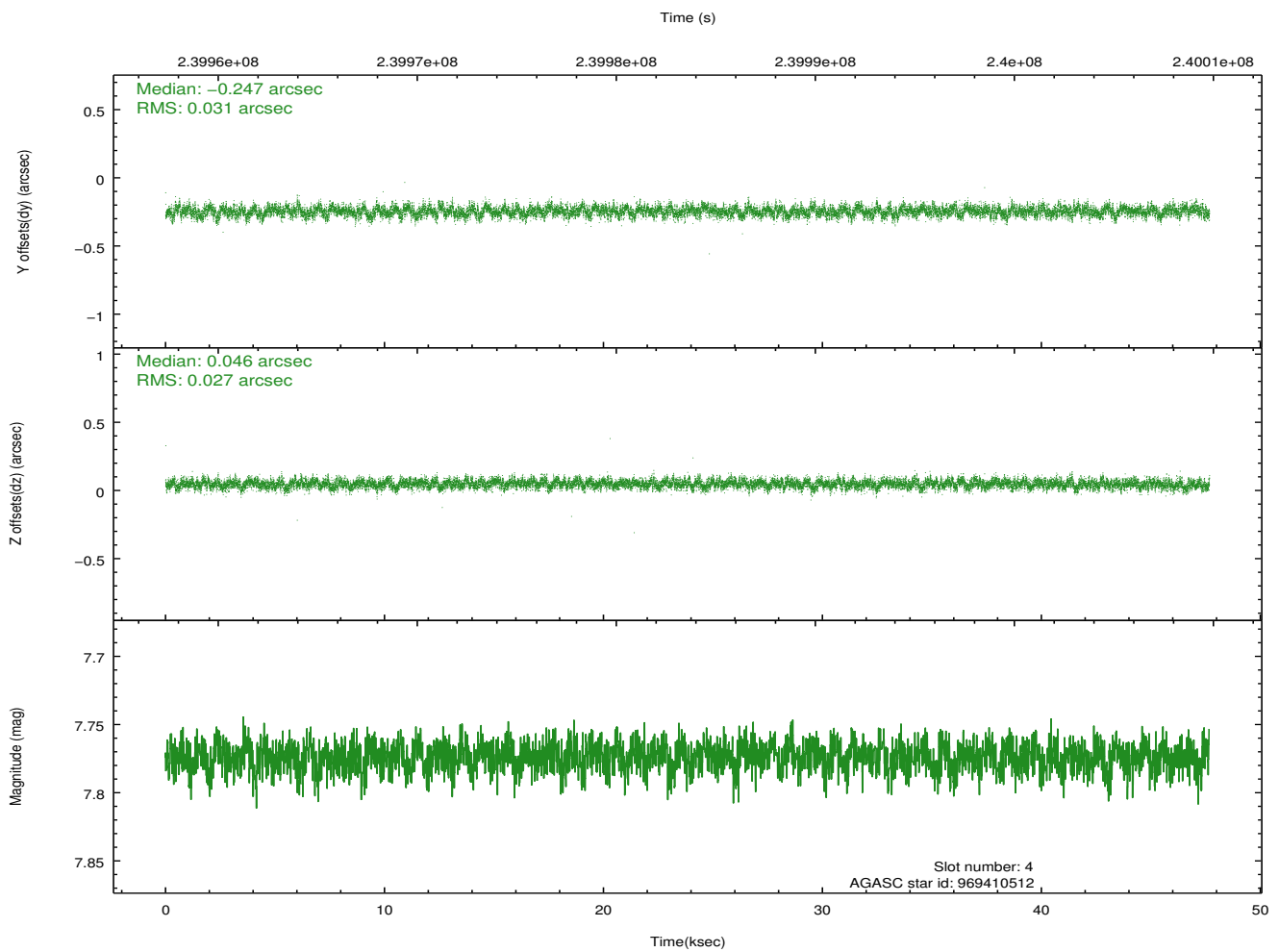
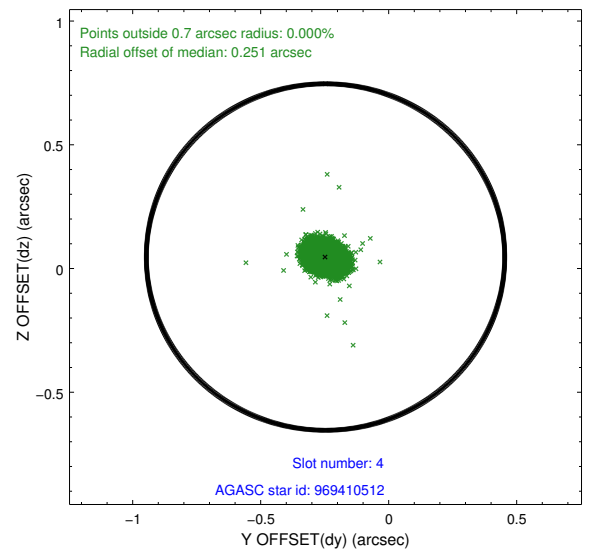
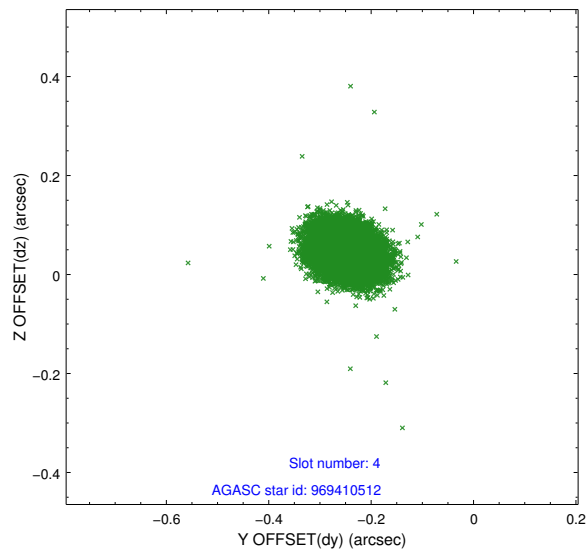
slot	status	id	mag	n_pts	med_dy	med_dz	dr1	dr2	ra	dec	mean_y	mean_z
0	FID	ACIS-S-2	7.10	11629	-0.072	-0.050	0.007	0.012	0.000000	0.000000	-760.78	-1731.41
1	FID	ACIS-S-4	7.21	11629	0.077	0.032	0.007	0.012	0.000000	0.000000	2152.62	177.21
2	FID	ACIS-S-6	7.35	11626	-0.033	0.025	0.007	0.012	0.000000	0.000000	401.18	814.56
3	GUIDE	969410168	7.39	23251	0.136	-0.056	0.062	0.097	273.917435	-33.091571	1324.64	954.39
4	GUIDE	969410512	7.77	23257	-0.247	0.046	0.043	0.071	273.701392	-32.213017	-1905.43	930.57
5	GUIDE	969412944	8.60	23254	0.058	-0.032	0.069	0.110	273.273913	-32.720895	-361.11	-695.56
6	GUIDE	969415768	9.12	23240	-0.091	-0.103	0.115	0.174	272.909685	-32.404195	-1689.53	-1565.64
7	GUIDE	969423304	9.16	23218	0.146	0.144	0.089	0.141	274.359501	-33.253694	2161.24	2144.17

2.4 Star Slots

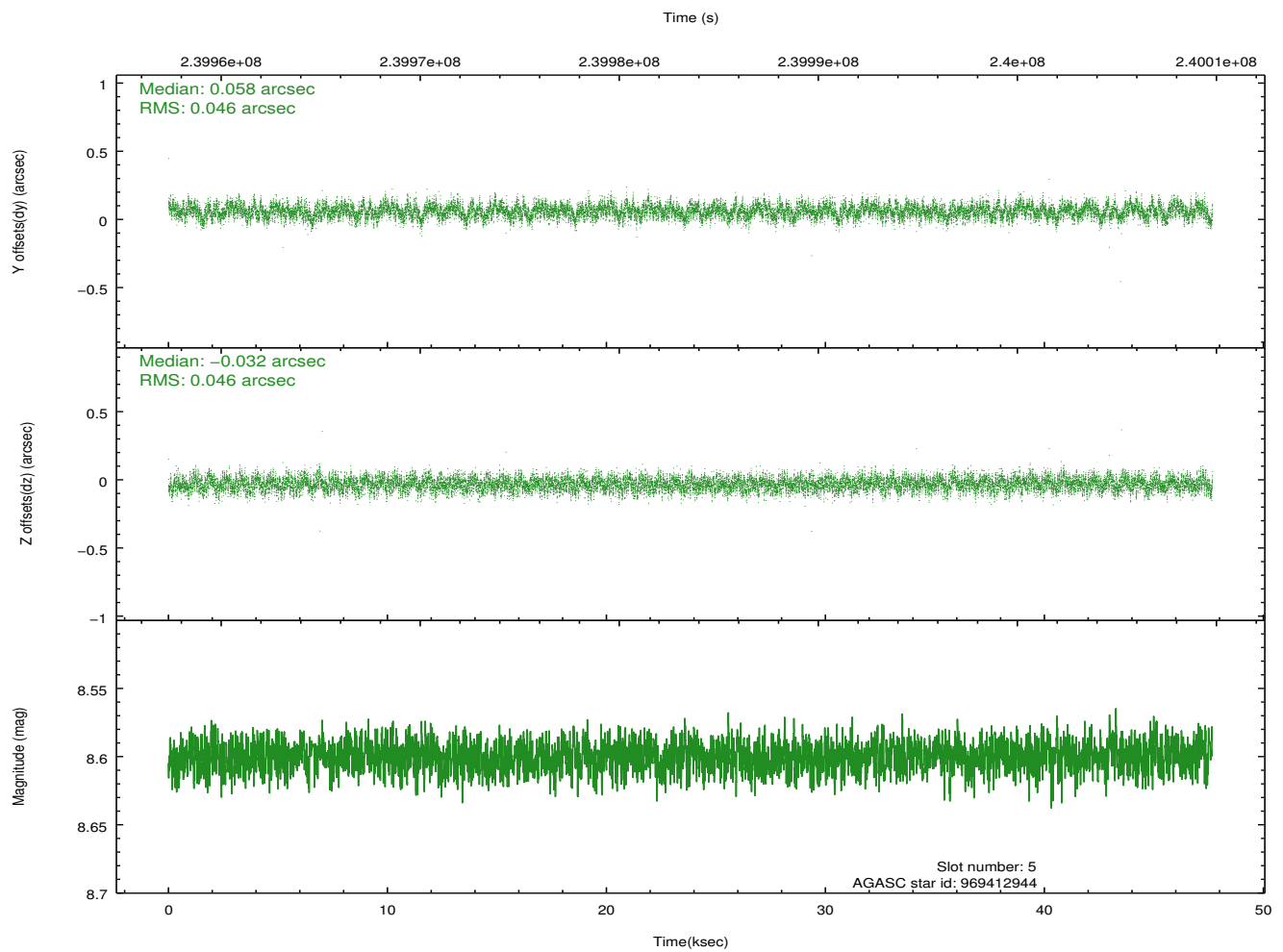
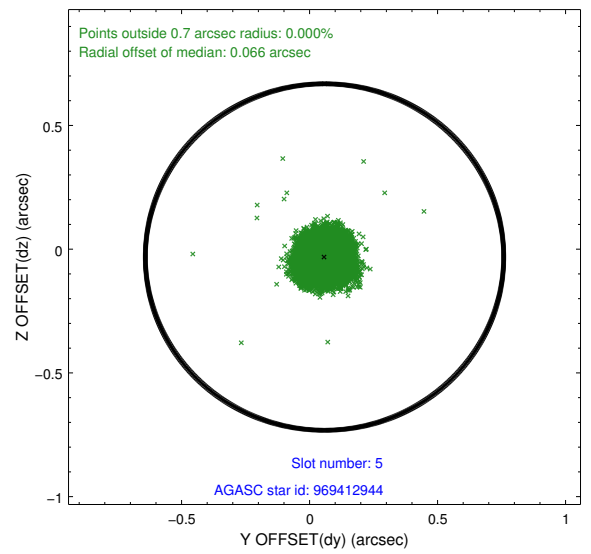
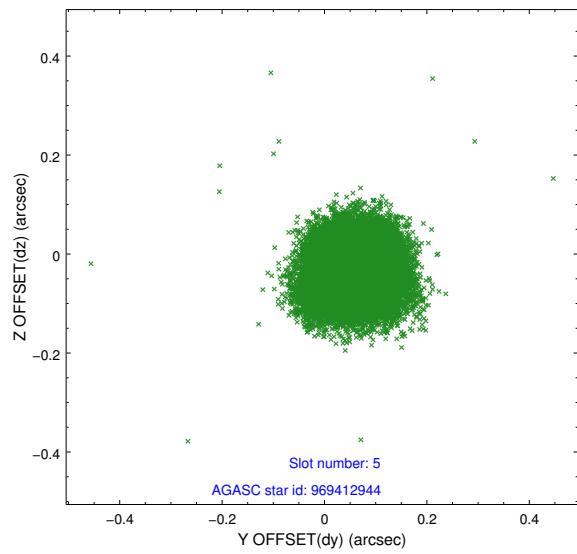
2.4.1 Slot 3



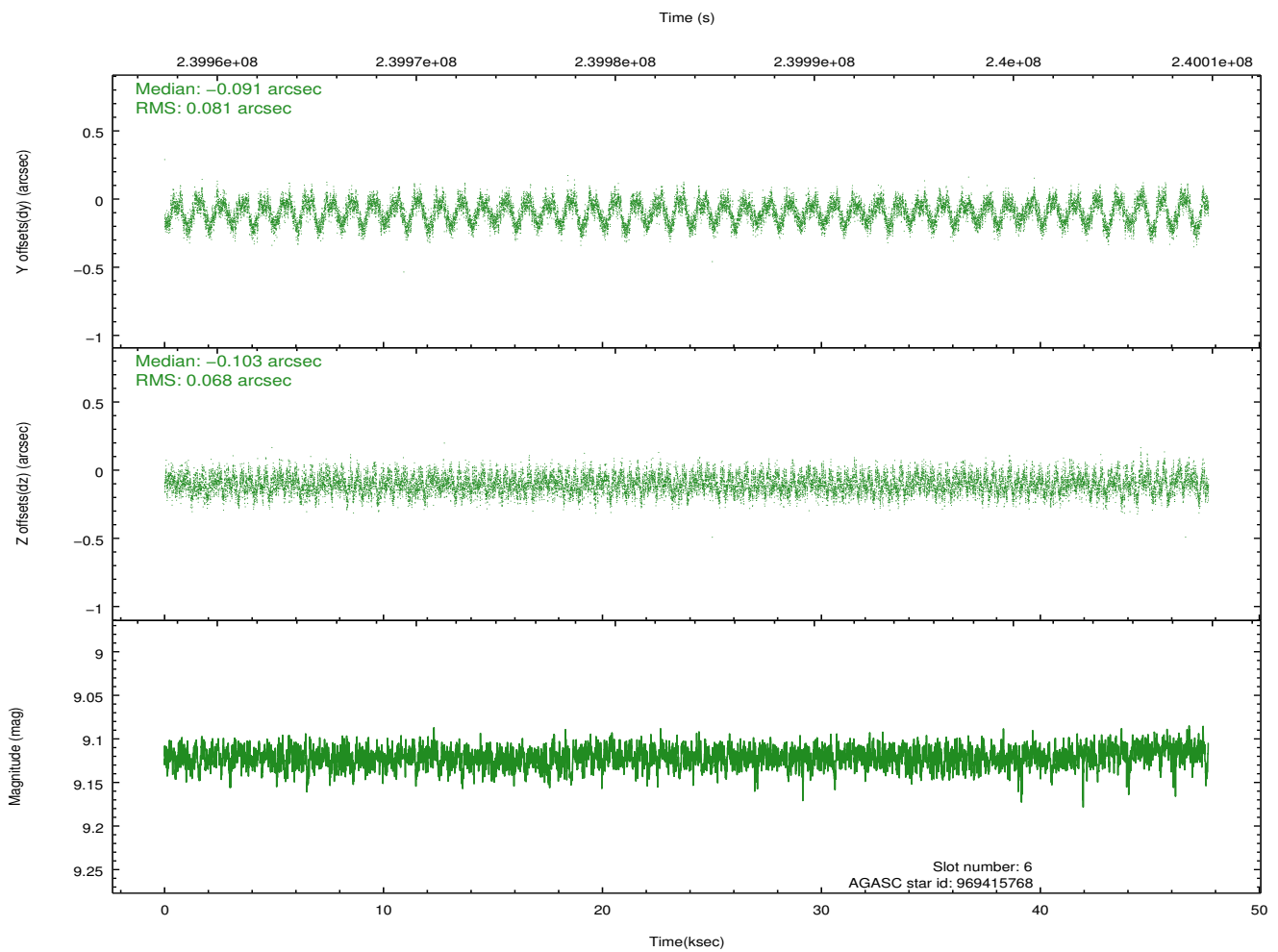
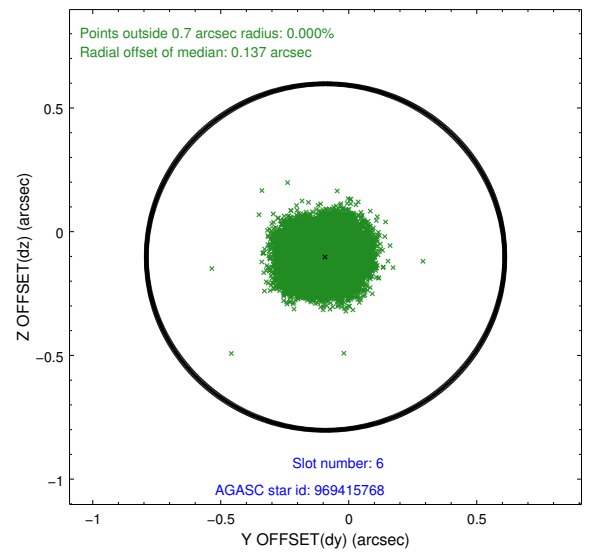
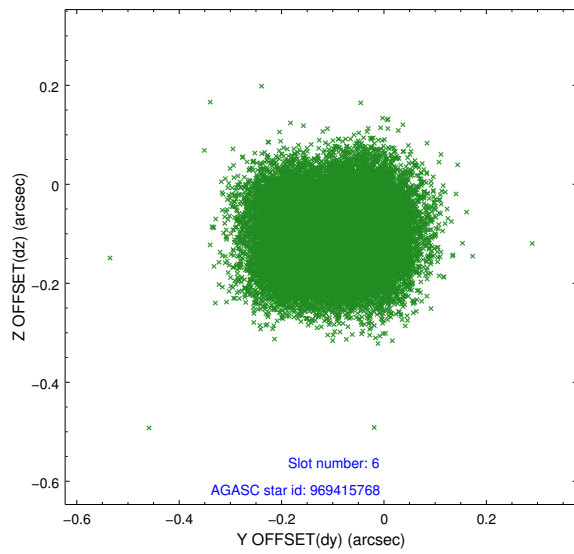
2.4.2 Slot 4



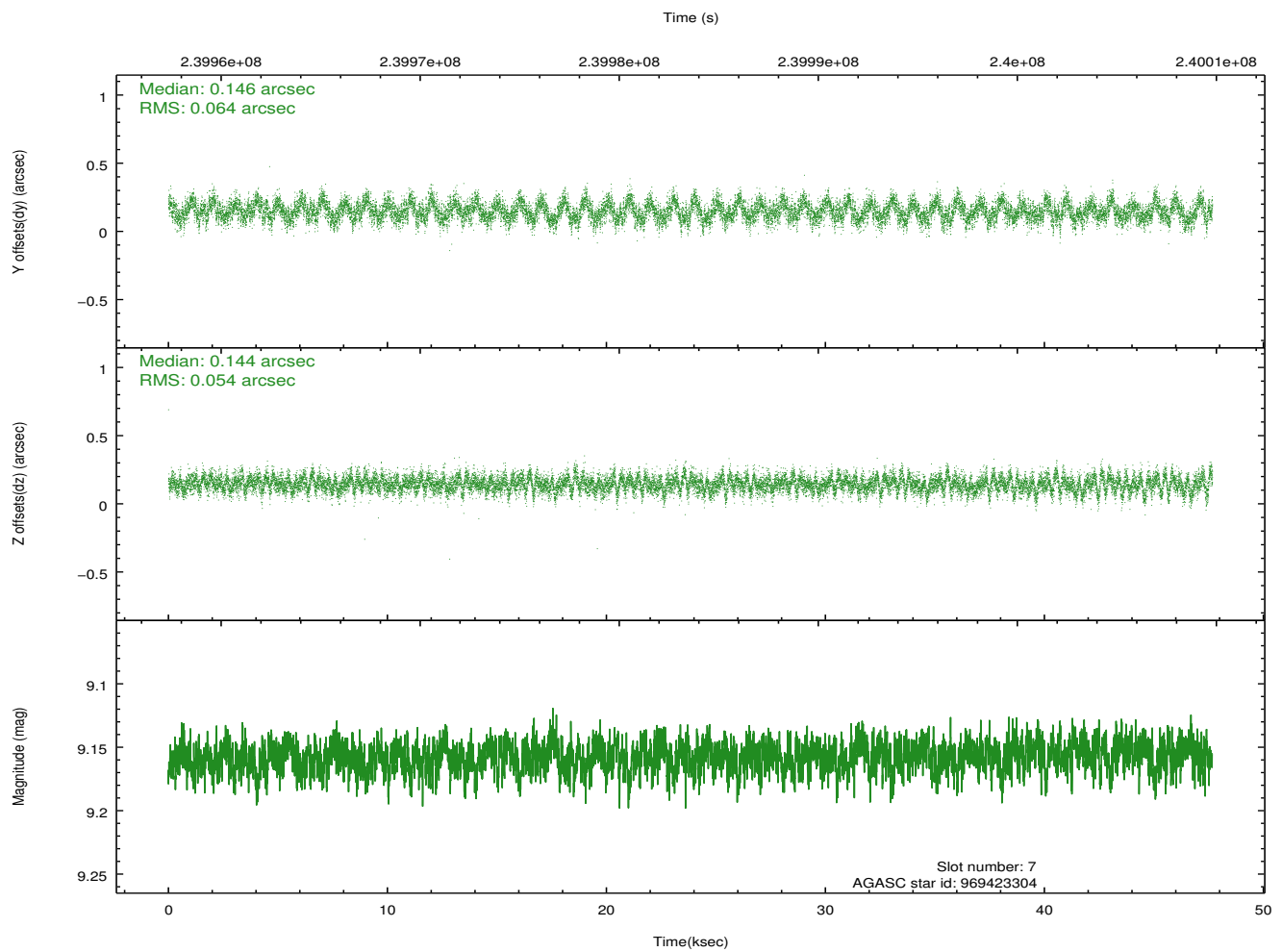
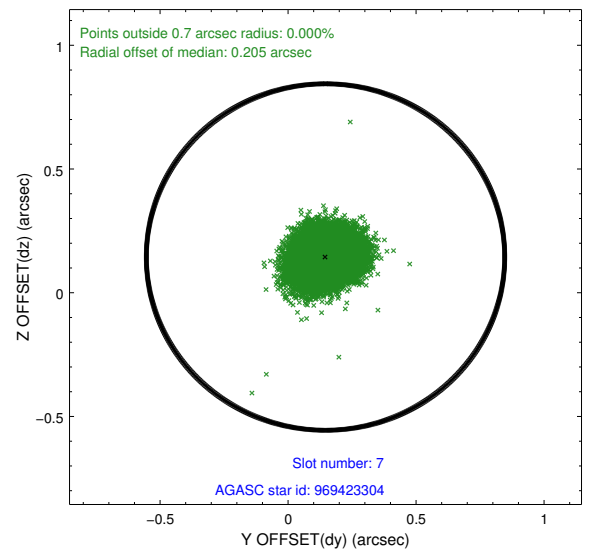
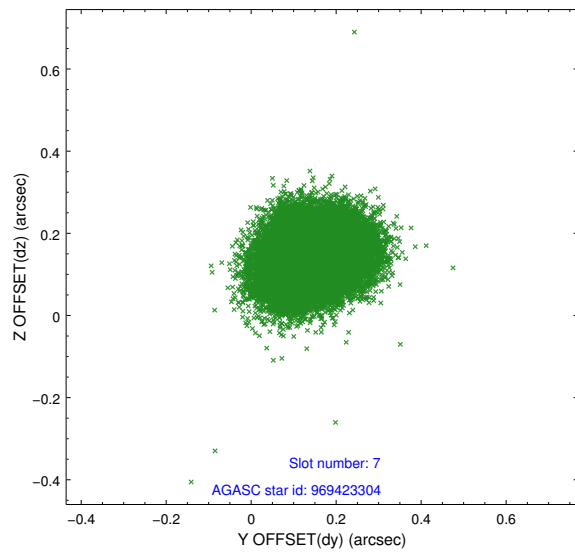
2.4.3 Slot 5



2.4.4 Slot 6

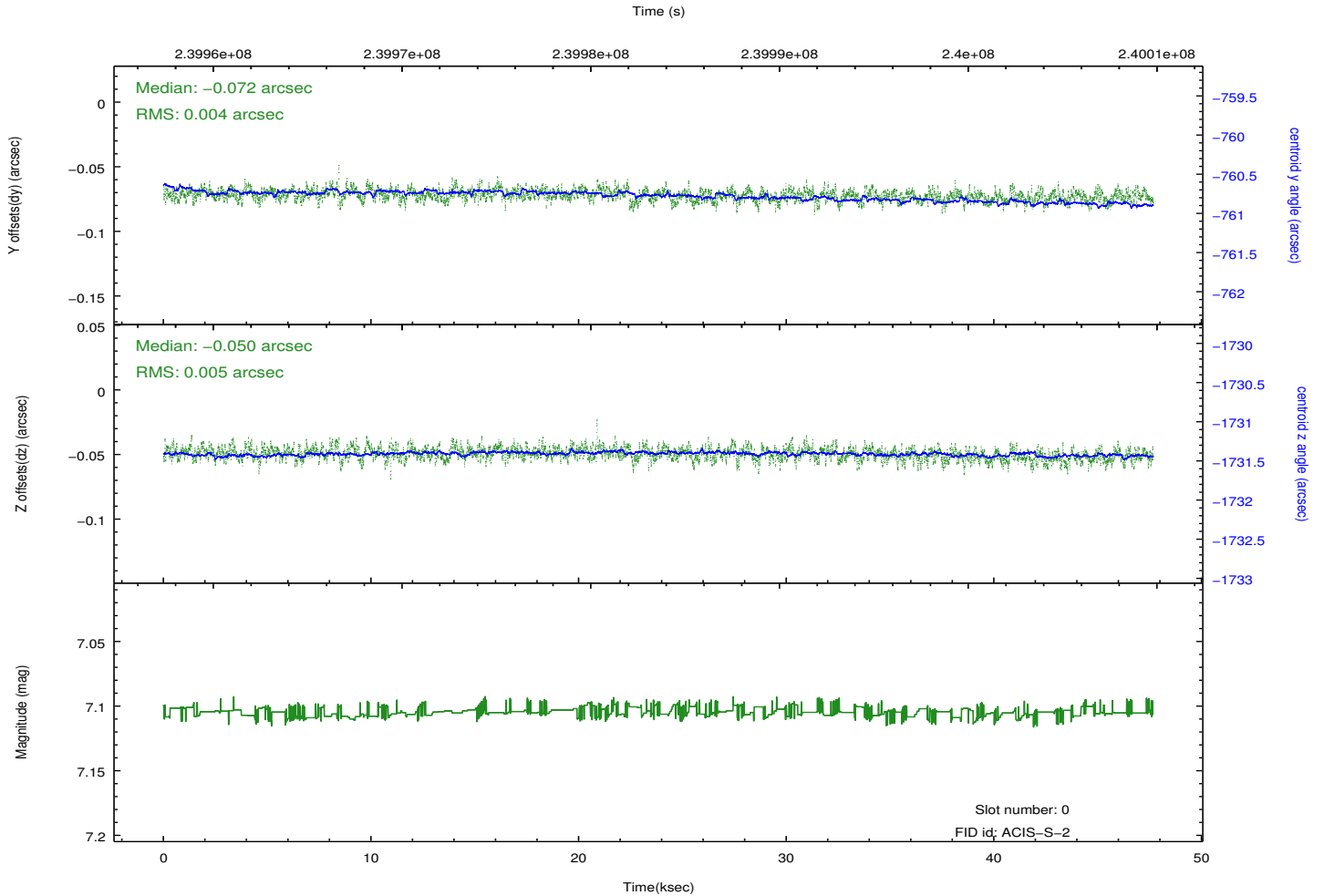
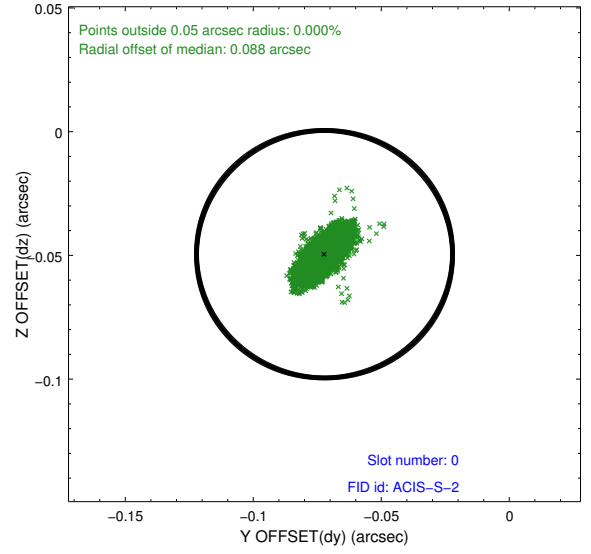
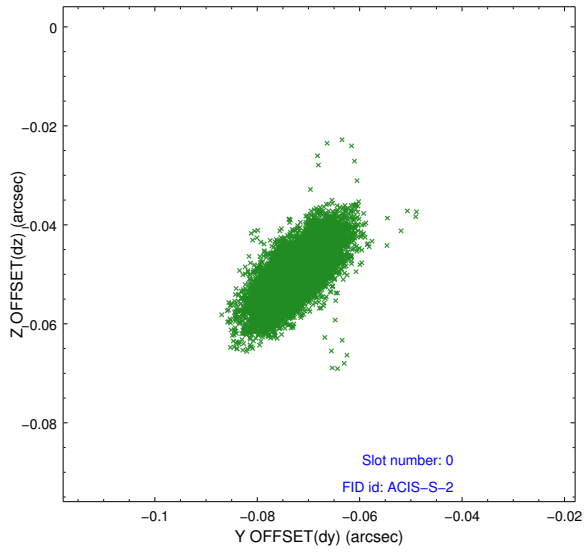


2.4.5 Slot 7

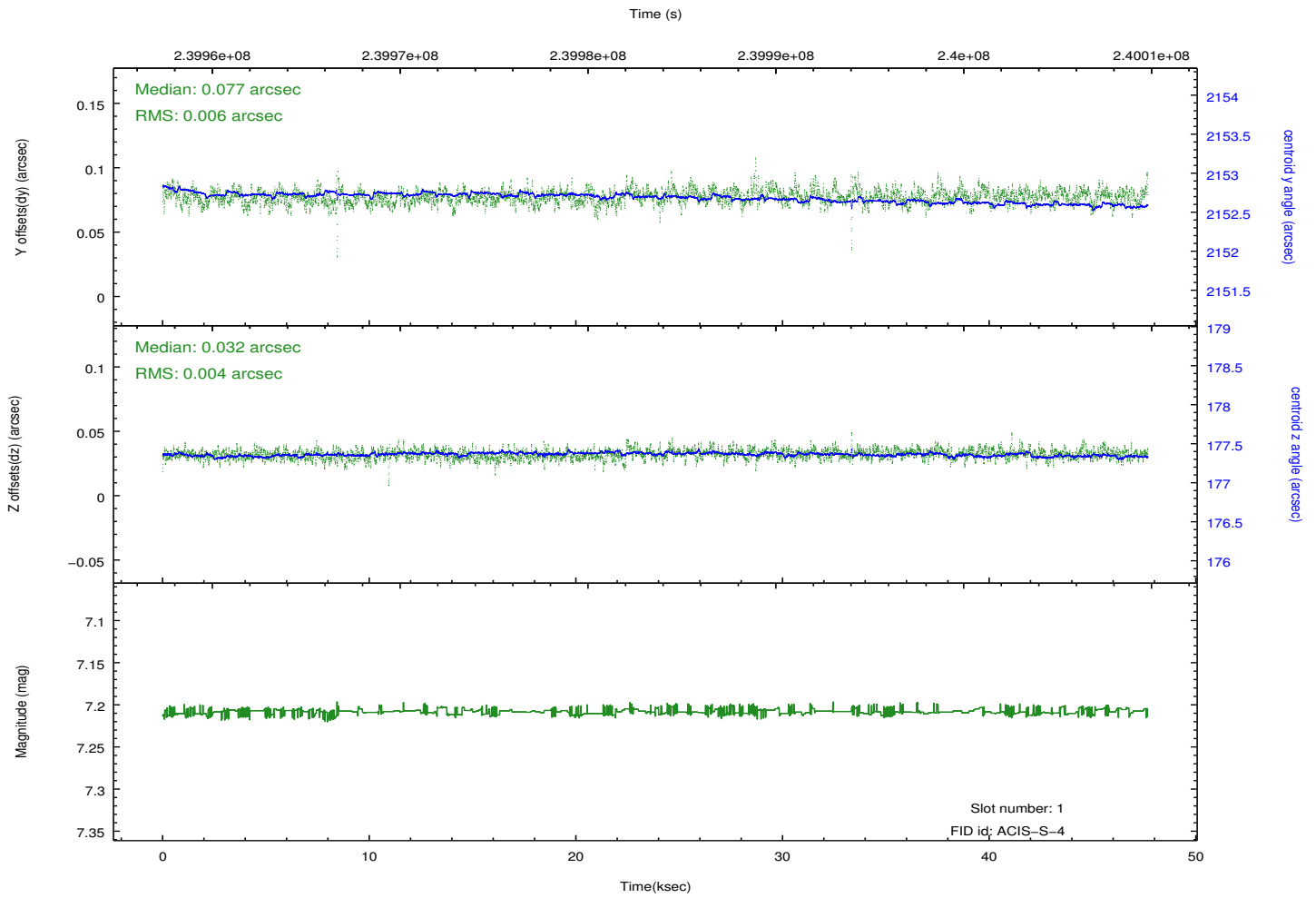
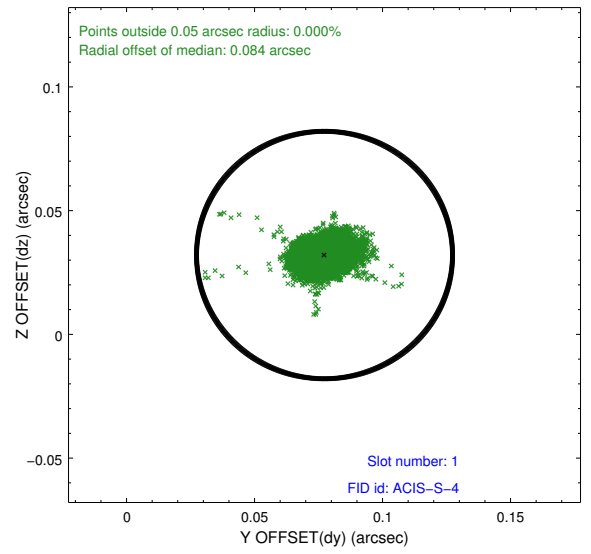
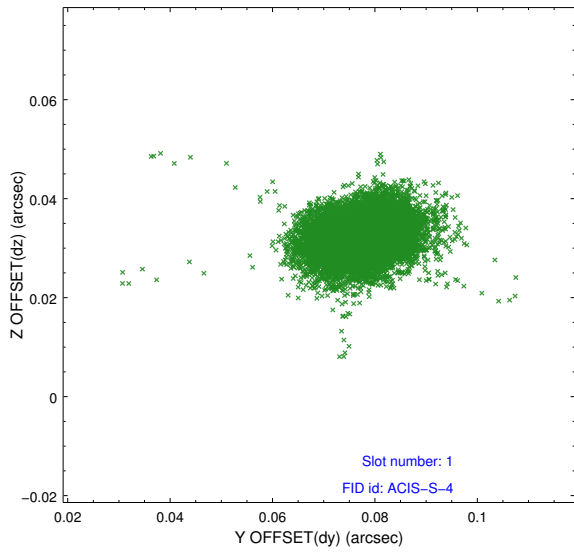


2.5 FID Slots

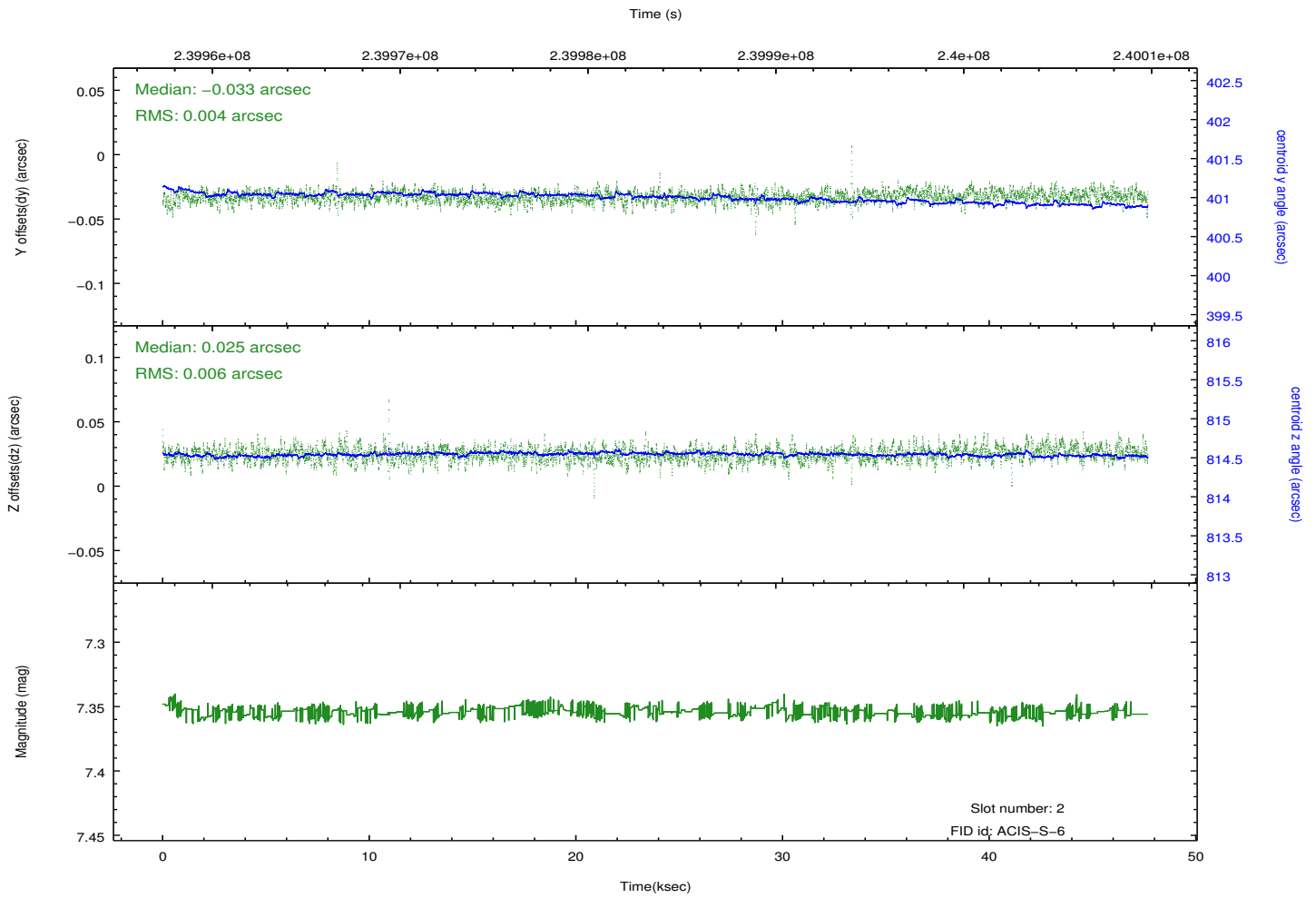
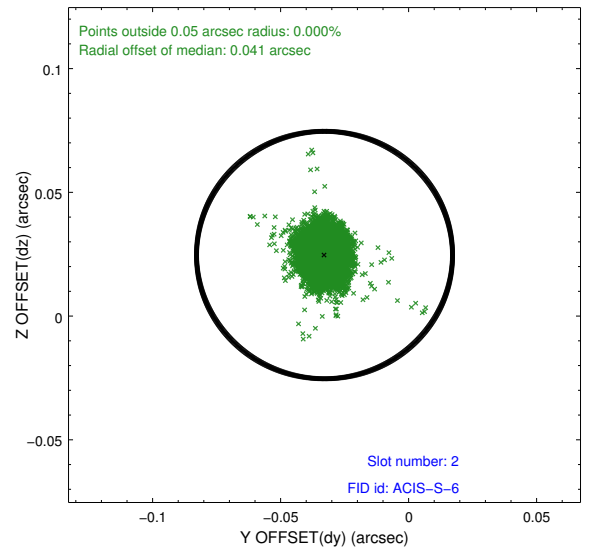
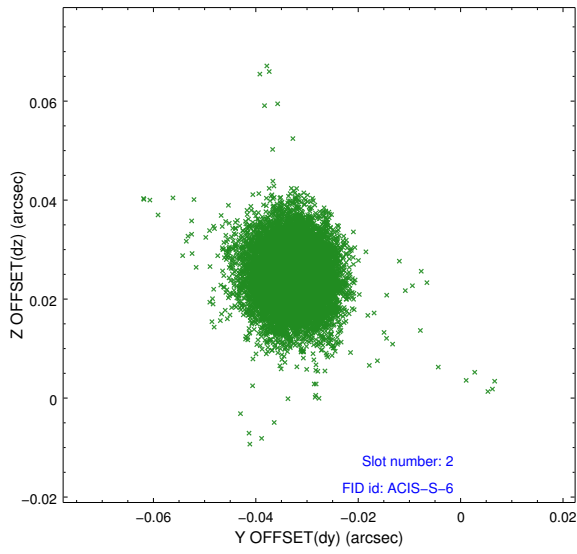
2.5.1 Slot 0



2.5.2 Slot 1



2.5.3 Slot 2

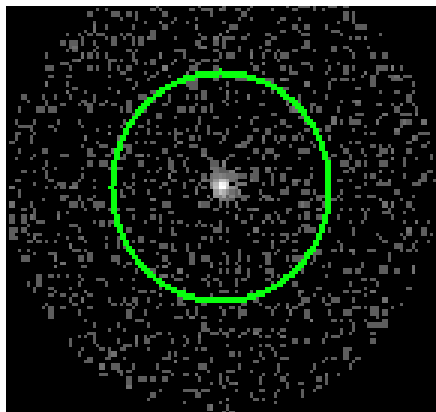


3 Gratings

3.1 HEG Arm



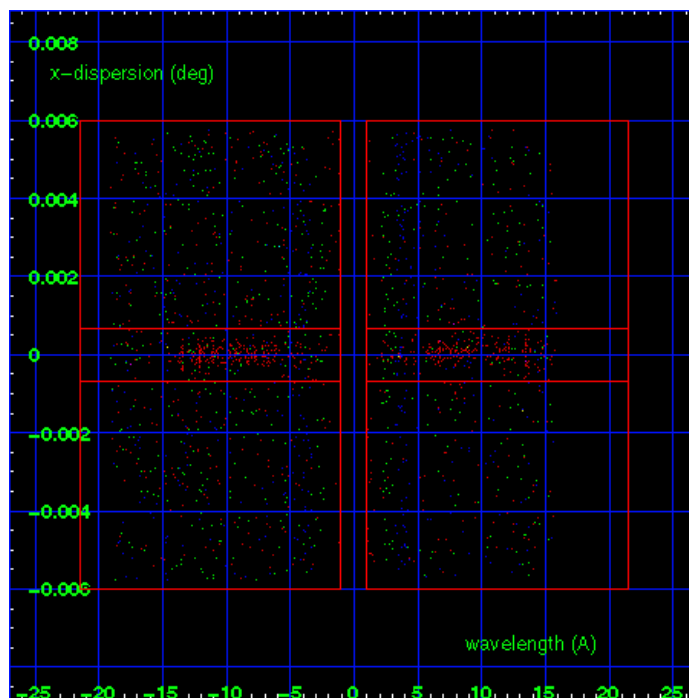
HEG Order Sort 123



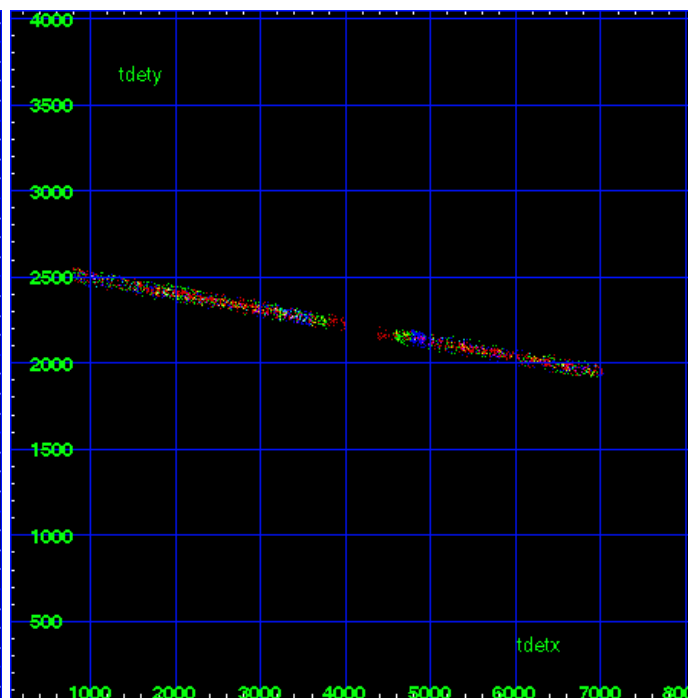
HEG Zero Order



HEG Order Sort ALL

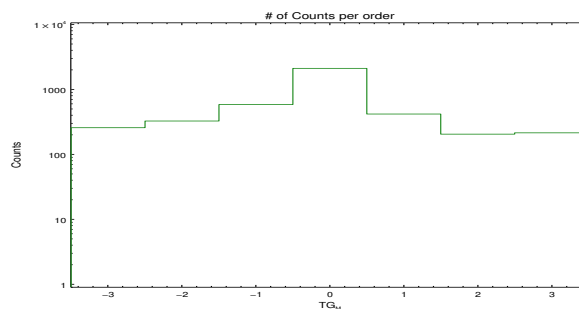


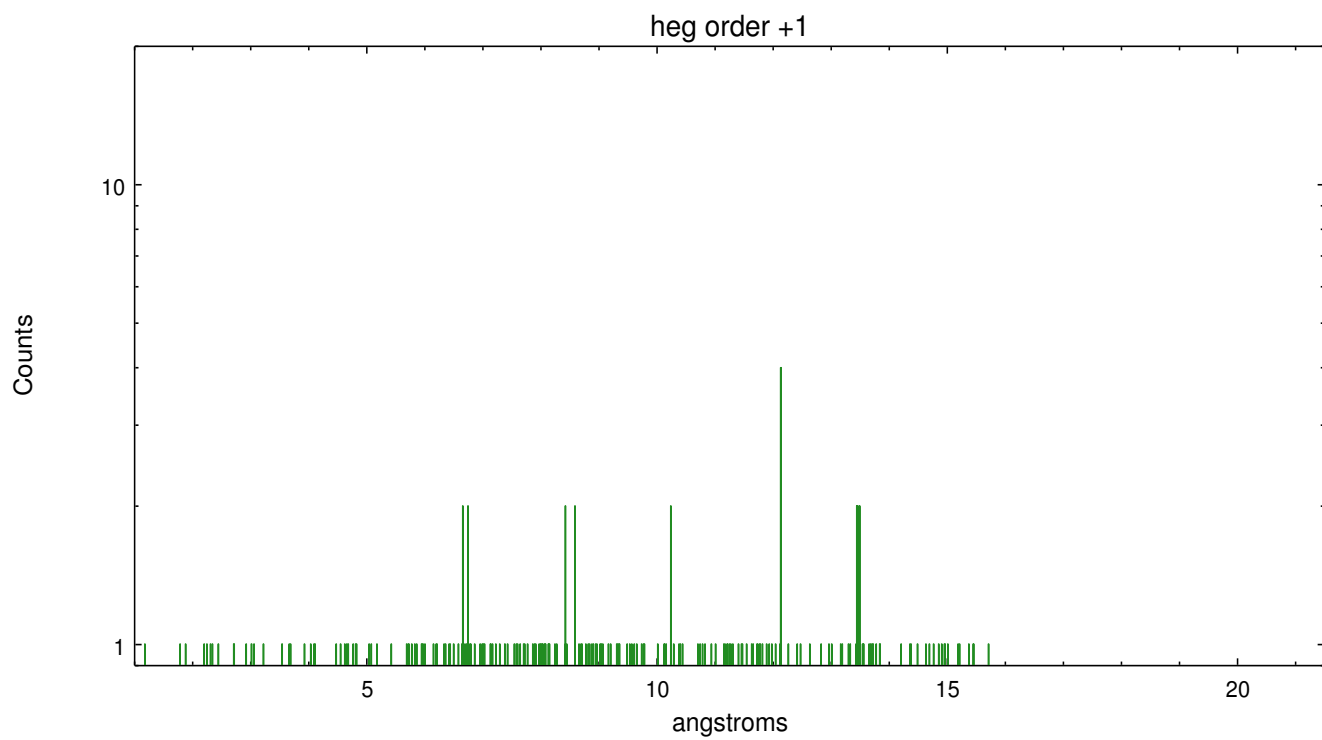
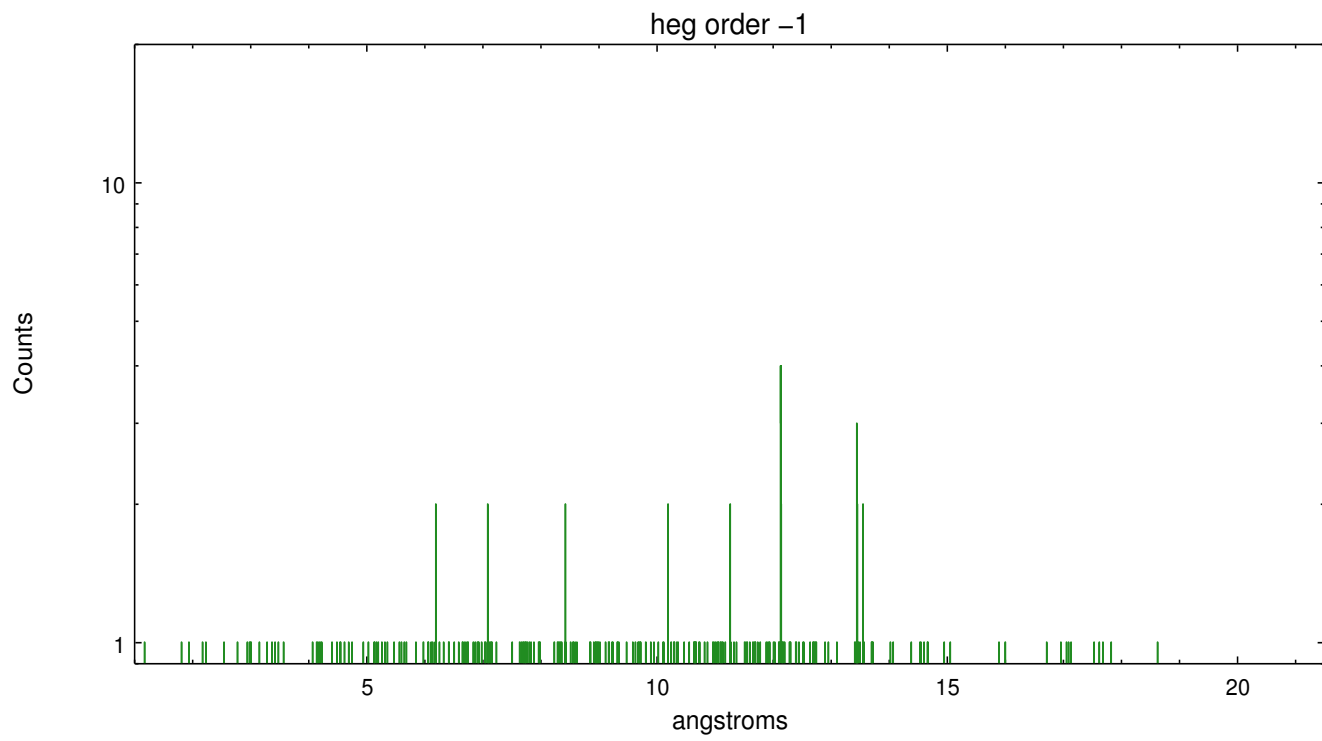
Spot Image HEG



Full Detector HEG

	order -3	order -2	order -1	order 0	order 1	order 2	order 3
Events	258	327	587	2120	419	205	215

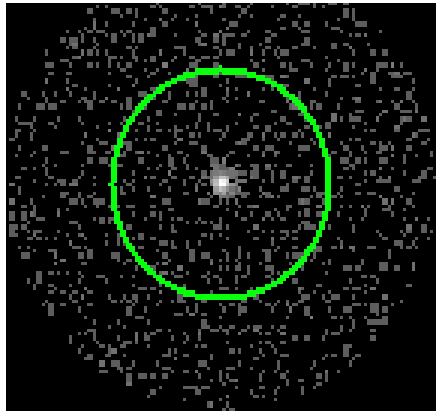




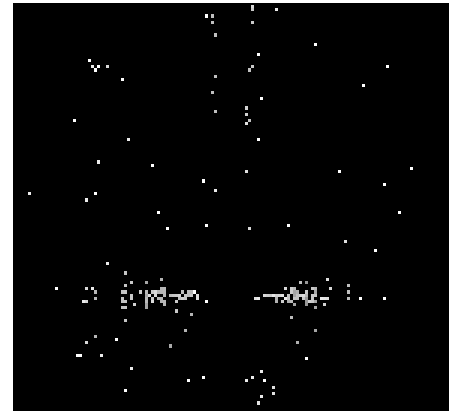
3.2 MEG Arm



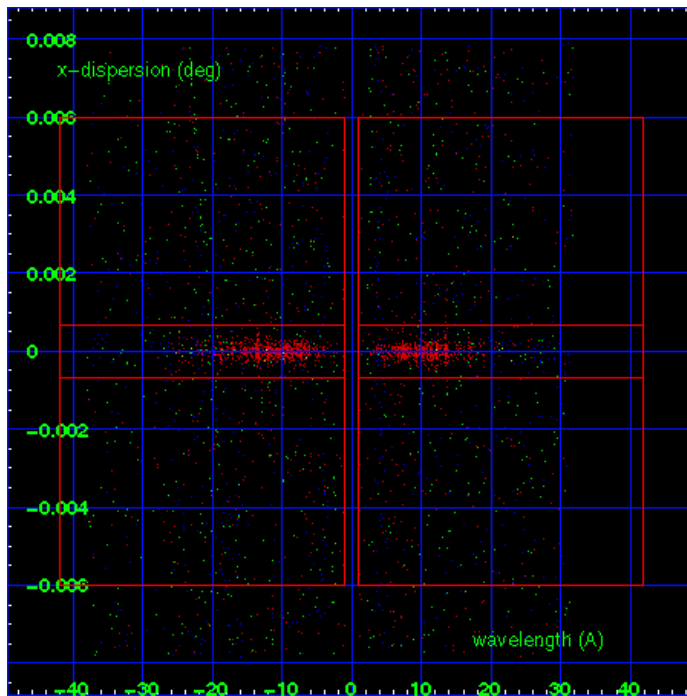
MEG Order Sort 123



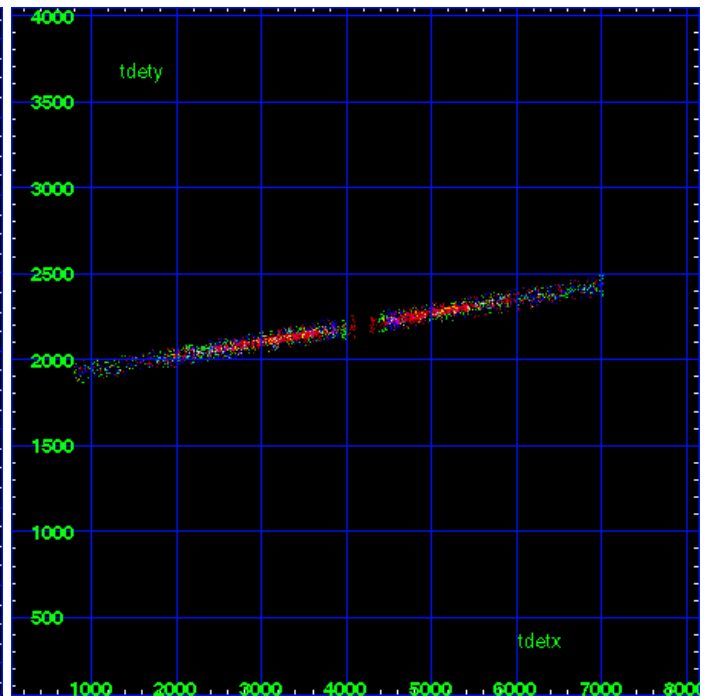
MEG Zero Order



MEG Order Sort ALL

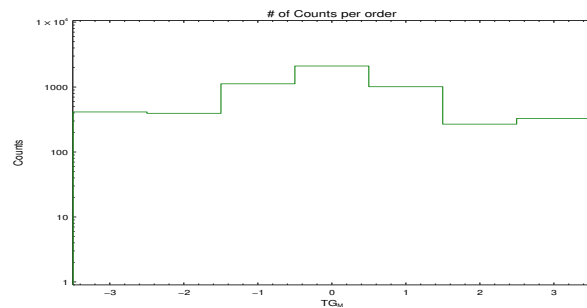


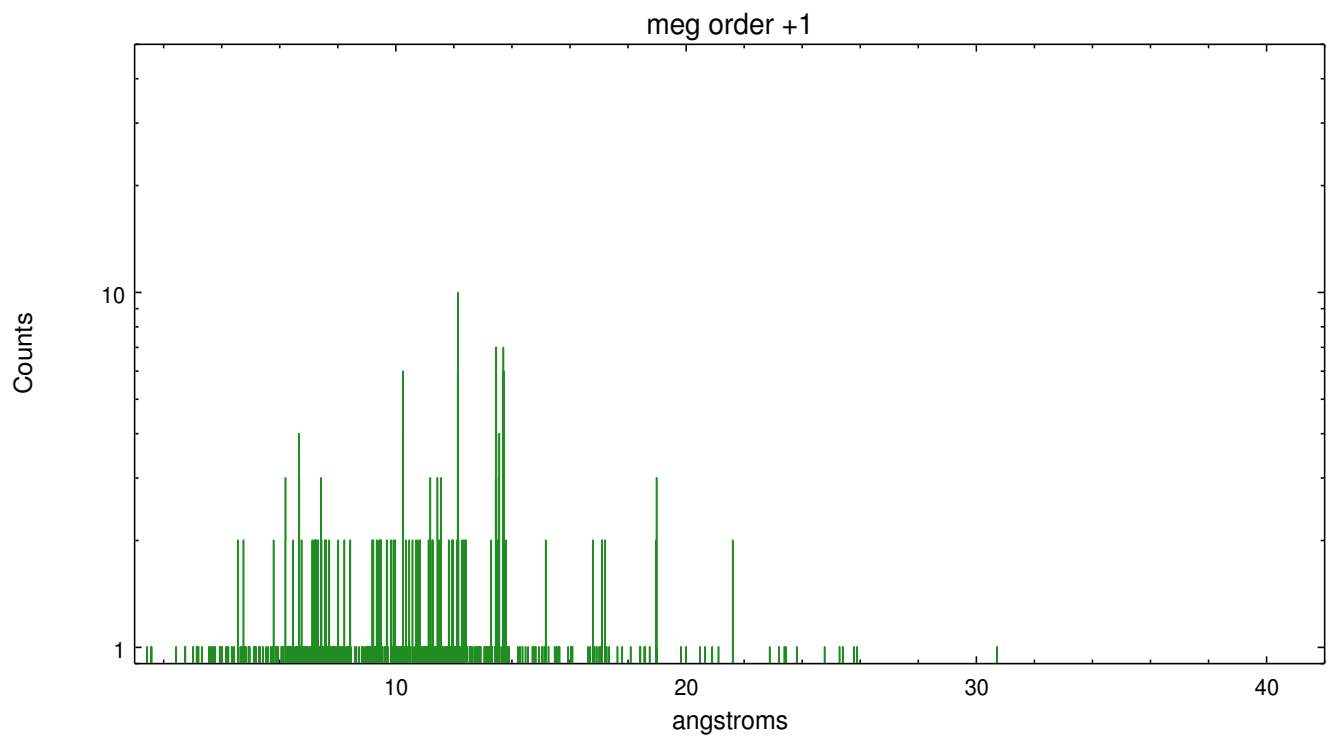
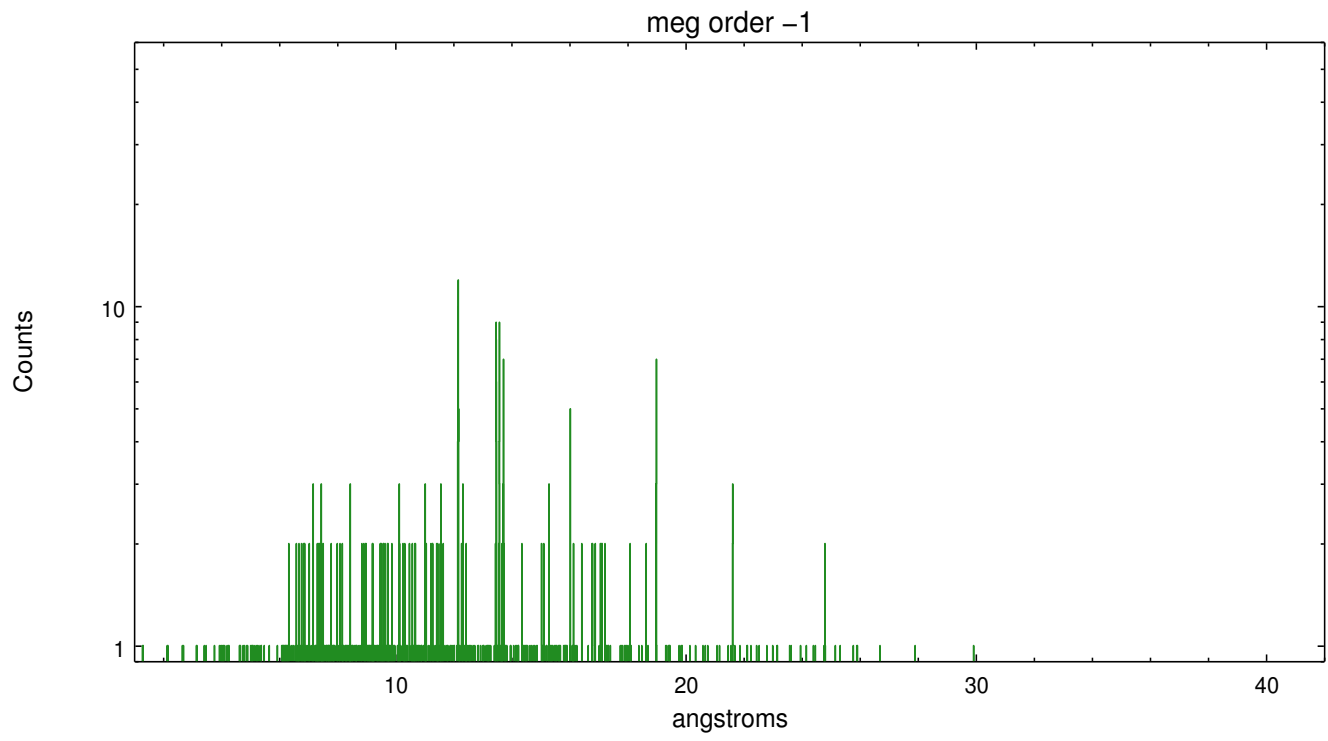
Spot Image MEG



Full Detector MEG

	order -3	order -2	order -1	order 0	order 1	order 2	order 3
Events	415	395	1127	2120	1017	269	329





A Summary

A.1 Status

V&V Scientist	Joy Nichols
V&V Date (YYYY-MM-DD)	2013.01.23
V&V Edition	1
V&V Disposition and Status	OK
V&V Charge Time	46.4576

A.2 Comments

Additional source on same chip, approximately 3 arcmin east of target, also has a dispersed meg spectrum that intersects the dispersed spectrum of the target. No contamination of the primary spectrum is expected from this additional source.

Another off-axis source is present on S3 about 6 arcmin NNW. All three of these sources are extracted and available in TGCat.