

V&V Reference Report

L2 ASCDS Version : 8.5.1.1

Observation 6365 - L2 Version 3
Chandra X-Ray Center

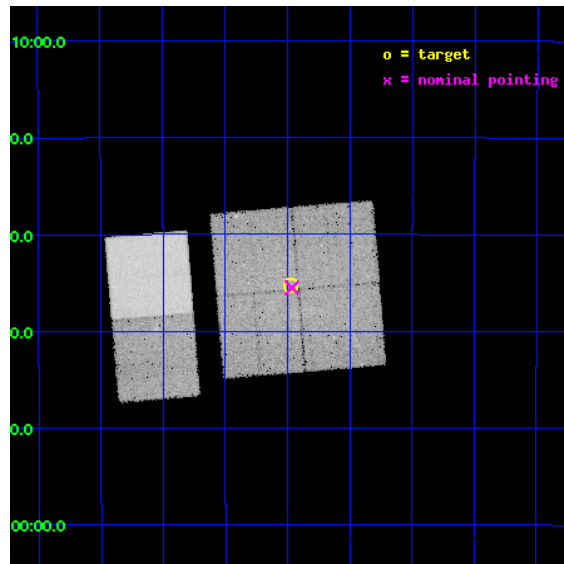
L2 Processing Date : Dec 30 2012

Contents

1	Front	2
2	OBI	3
2.1	OBI	3
2.1.1	Images	3
2.1.2	Bias	3
2.1.3	Parameters	4
2.1.4	Events	4
2.2	Compared Parameters	5
2.3	Aspect	6
2.4	Star Slots	9
2.4.1	Slot 3	9
2.4.2	Slot 4	10
2.4.3	Slot 5	11
2.4.4	Slot 6	12
2.4.5	Slot 7	13
2.5	FID Slots	14
2.5.1	Slot 0	14
2.5.2	Slot 1	15
2.5.3	Slot 2	16
A	Summary	17
A.1	Status	17
A.2	Comments	17

1 Front

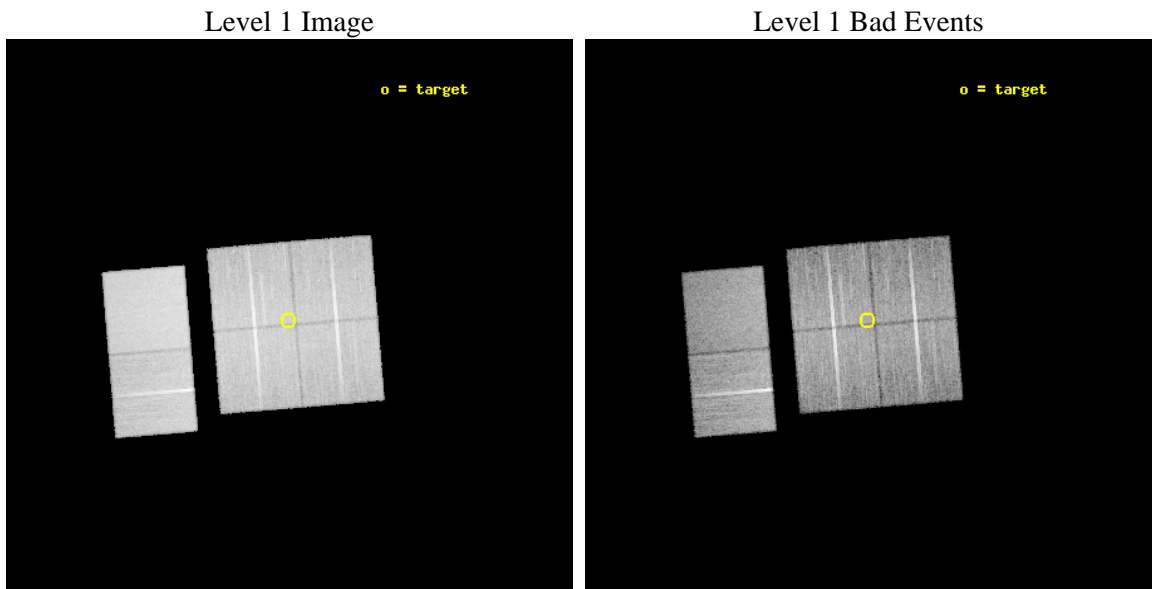
seq_num	600453	Sequence number
obs_id	6365	Observation id
title	Galactic Bulge Chandra-HST Survey	Proposal title
observer	Professor Johnathan Grindlay	Principal investigator
object	Limiting Window	Source name
dtcycle	0	
cycle	P	events from which exps? Prim/Second/Both
ra_targ	267.86875	Observer's specified target RA [deg]
dec_targ	-29.588	Observer's specified target Dec [deg]
ra_nom	267.86629250463	Nominal RA [deg]
dec_nom	-29.5921484128	Nominal Dec [deg]
roll_nom	265.26689640259	Nominal Roll [deg]
revision	3	Processing version of data
ontime	20953.162600428	Sum of GTIs [s]
livetime	20687.841039101	Livetime [s]
ontime0	20949.798589915	Sum of GTIs [s]
ontime1	20956.321490735	Sum of GTIs [s]
ontime2	20953.121660054	Sum of GTIs [s]
ontime3	20953.162600428	Sum of GTIs [s]
ontime6	20956.485650748	Sum of GTIs [s]
ontime7	20956.444610745	Sum of GTIs [s]
l2events	220562	Number of level 2 events



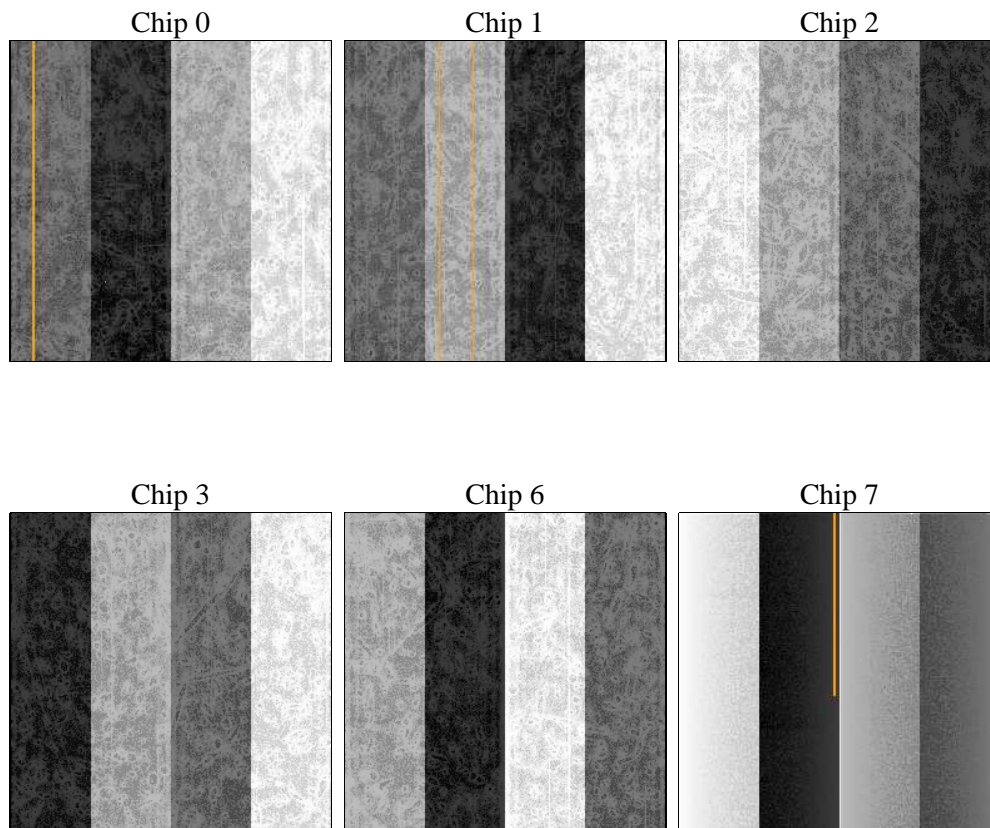
2 OBI

2.1 OBI

2.1.1 Images



2.1.2 Bias



2.1.3 Parameters

obi_num	1	Obi number	sched_exp_time	21000.000000	[s] Scheduled observation exposure time
ascdsver	8.5.1.1	Processing system revision	ontime	20953.162600428	Sum of GTIs [s]
caldbver	4.5.5	 	ontime0	20949.798589915	Sum of GTIs [s]
date	2012-12-30T22:53:28	Date and time of file creation	ontime1	20956.321490735	Sum of GTIs [s]
revision	3	Processing version of data	ontime2	20953.121660054	Sum of GTIs [s]
			ontime3	20953.162600428	Sum of GTIs [s]
			ontime6	20956.485650748	Sum of GTIs [s]
			ontime7	20956.444610745	Sum of GTIs [s]
			l1events	1060071	Number of level 1 events

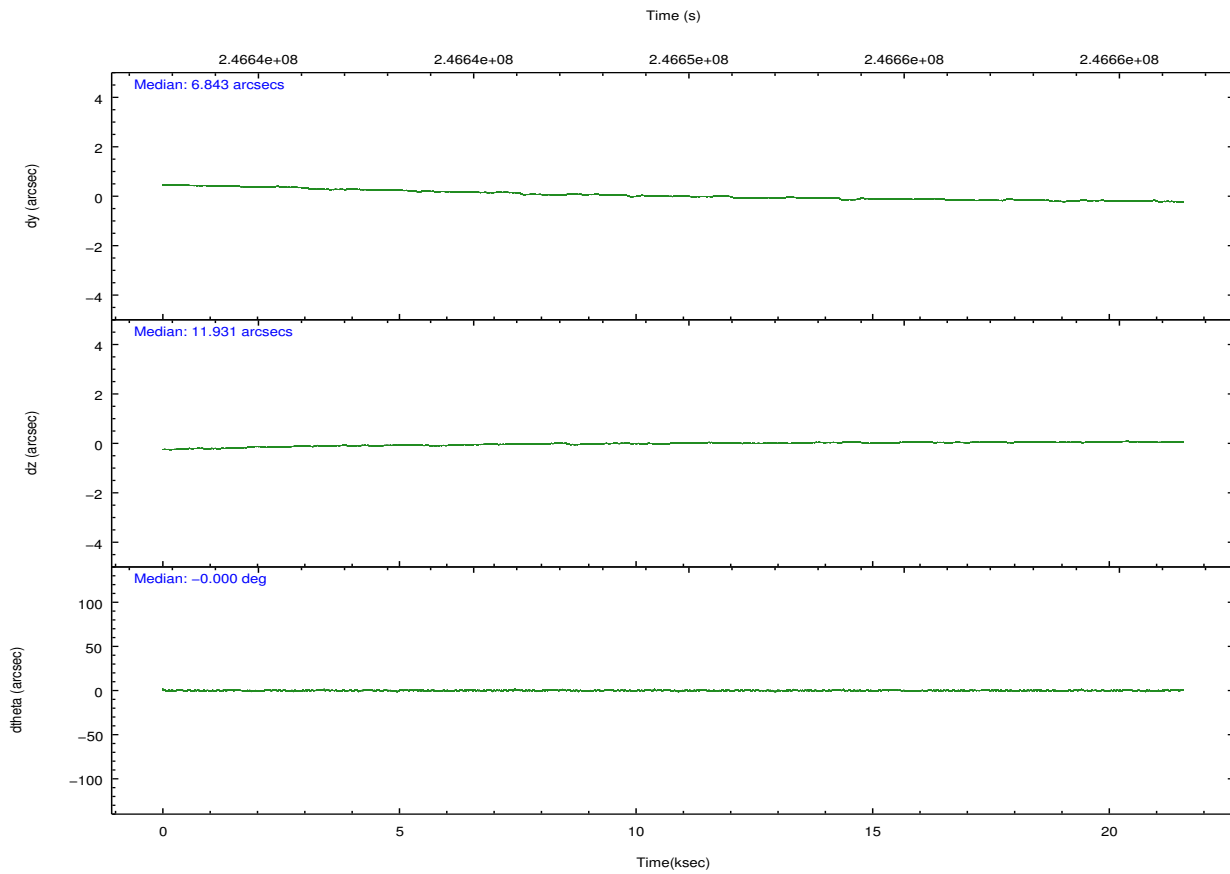
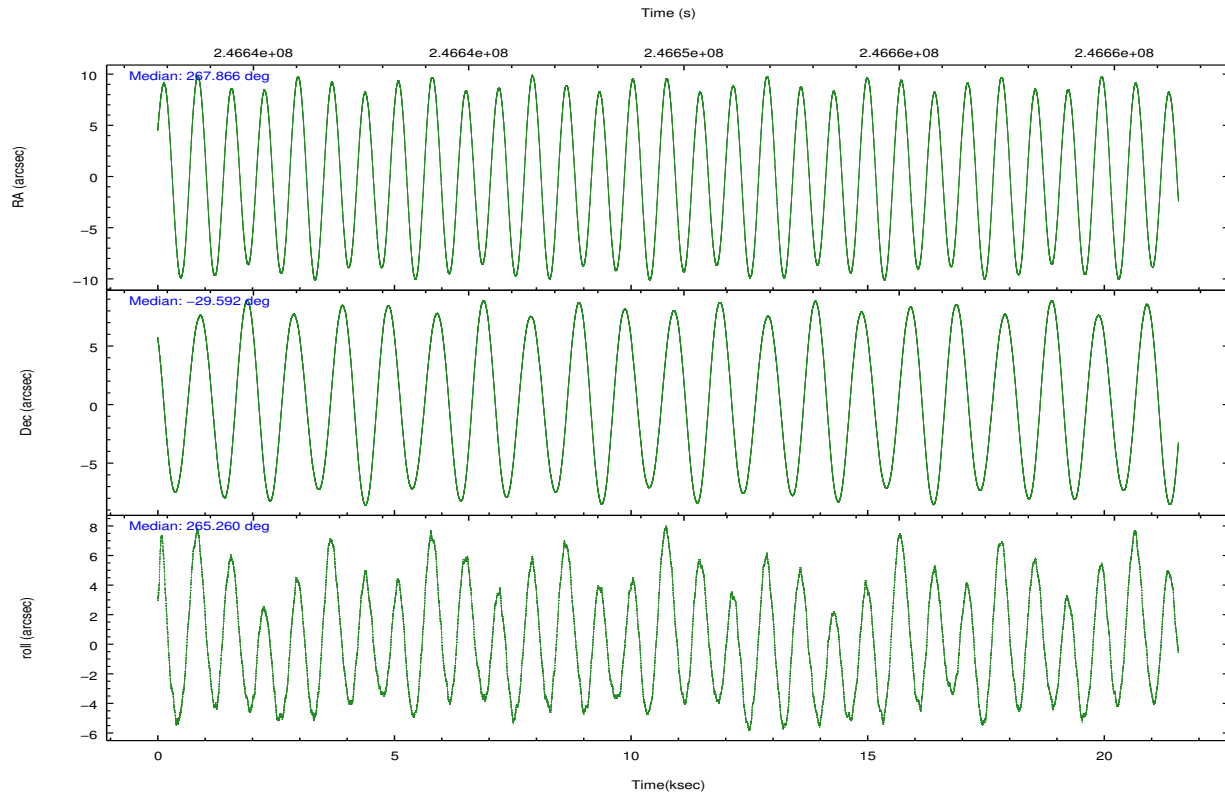
2.1.4 Events

	ccd 0	ccd 1	ccd 2	ccd 3	ccd 6	ccd 7		ccd 0	ccd 1	ccd 2	ccd 3	ccd 6	ccd 7
level 1 events	155153	153258	172967	169226	177668	231799	grade 0 events	15337	14057	16416	15474	13365	10401
rejected events	127255	125552	144510	141718	151325	131237		9%	9%	9%	9%	7%	4%
rejected %	82%	81%	83%	83%	85%	56%	grade 1 events	113	106	153	138	106	220
								0%	0%	0%	0%	0%	0%
							grade 2 events	4988	5219	4801	4376	4854	20998
								3%	3%	2%	2%	2%	9%
							grade 3 events	2154	2224	2047	2090	2100	9119
								1%	1%	1%	1%	1%	3%
							grade 4 events	1929	2114	1988	2063	2026	8984
								1%	1%	1%	1%	1%	3%
							grade 5 events	6327	7020	6166	7505	7826	21552
								4%	4%	3%	4%	4%	9%
							grade 6 events	3501	4106	3215	3514	4008	51092
								2%	2%	1%	2%	2%	22%
							grade 7 events	120804	118412	138181	134066	143383	109433
								77%	77%	79%	79%	80%	47%

2.2 Compared Parameters

Parameter	Planned	Actual	Parameter	Planned	Actual
Instrument	ACIS	ACIS	Obspar format version number	7	7
Detector	ACIS-012367	ACIS-012367	Obspar file type	PREDICTED	ACTUAL
Grating	NONE	NONE	Obspar update status	NONE	UPDATED
Data mode	FAINT	FAINT	Number of optional ACIS chips dropped	0	0
Observation mode	POINTING	POINTING	On-chip summing requested	N	N
[deg] Pointing RA	267.852718	267.8662925046253	Subarray requested	NONE	NONE
[deg] Pointing Dec	-29.567385	-29.59214841280001	Alternating exposures requested	N	N
[deg] Pointing Roll	265.051512	265.2668964025899	[s] Primary exposure time	0.000000	3.2
[mm] SIM focus pos	-0.782348	-0.7809083437167272			
[mm] SIM defocus	0	0.001439871863259334			
[mm] SIM translation stage pos	-233.592463	-233.5874344608287			
[mm] SIM translation stage offset	0	-0.005018542100998502			
[s] Observation start time (MET)	246639416.184000	246638260.8219			
Observation start date	2005-10-25T14:55:52	2005-10-25T14:37:40			
[s] Observation end time (MET)	246660416.184000	246662060.298			
Observation end date	2005-10-25T20:45:52	2005-10-25T21:14:20			
Read mode	TIMED	TIMED			

2.3 Aspect

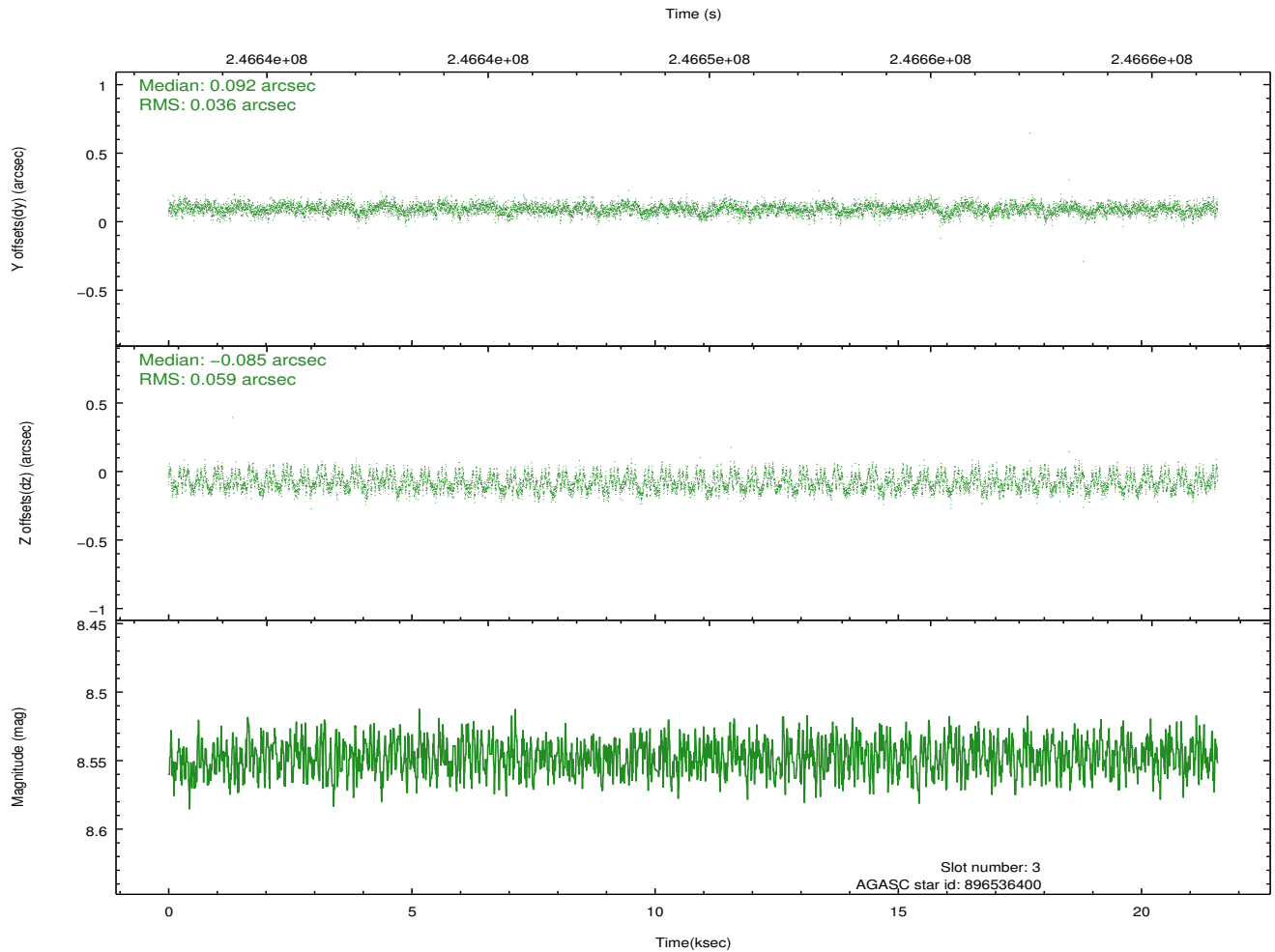
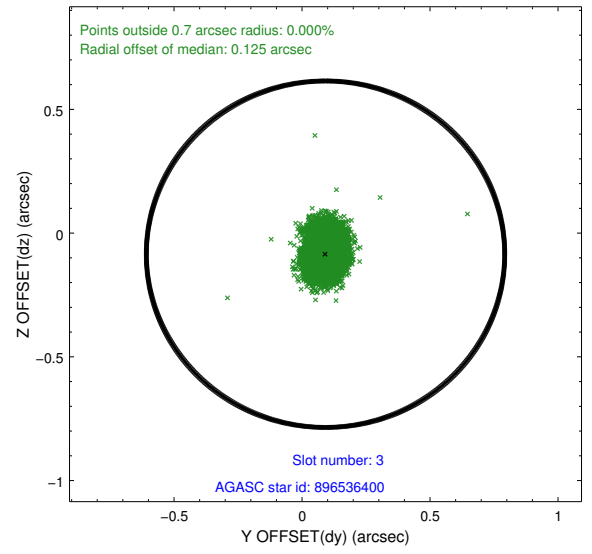
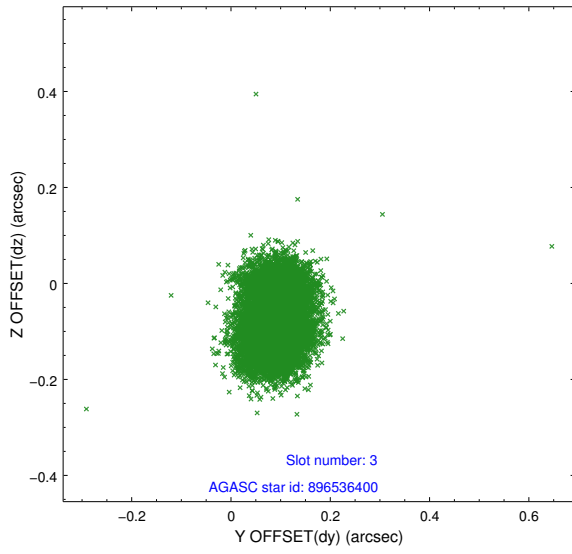


Slot Statistics

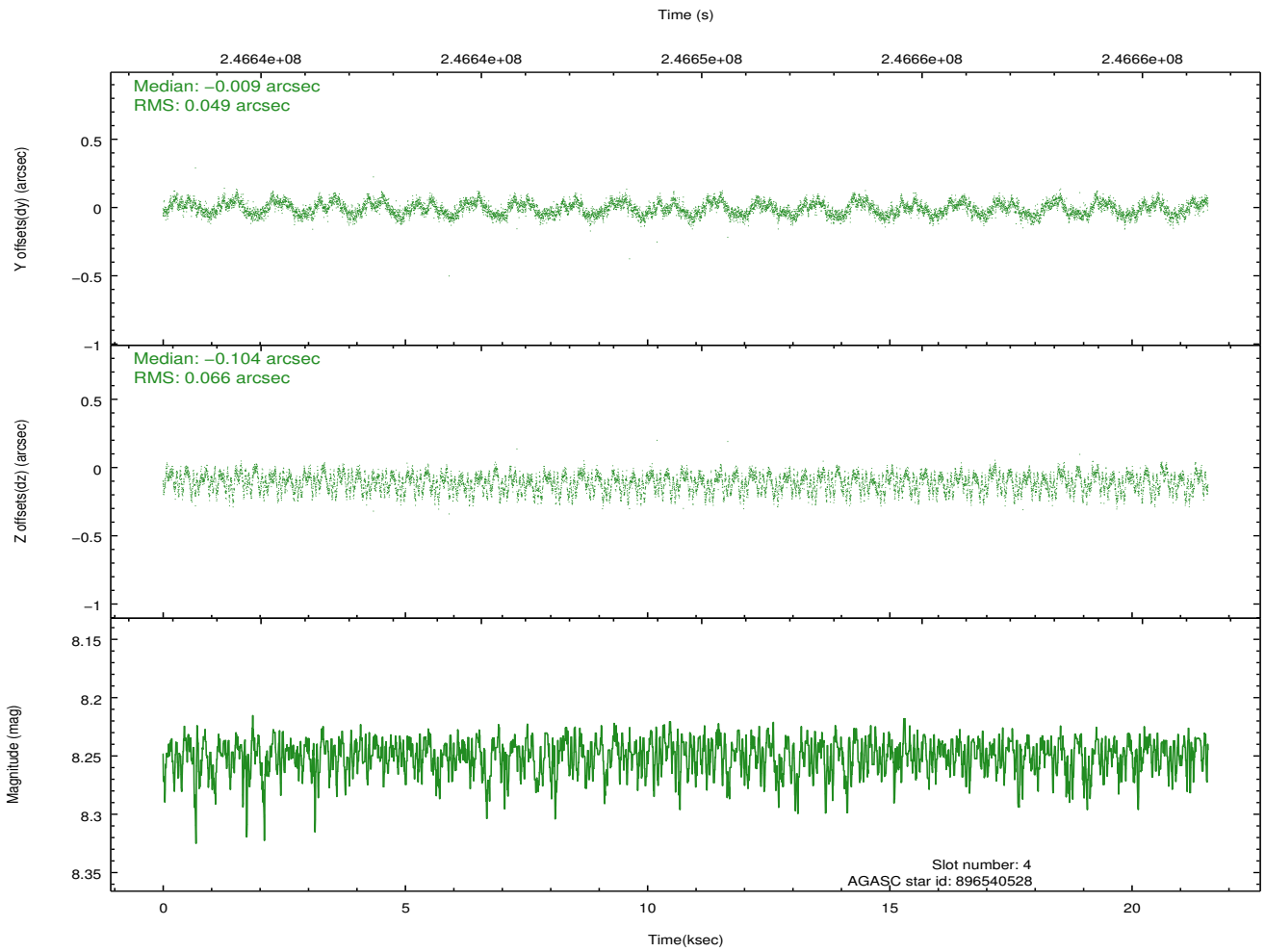
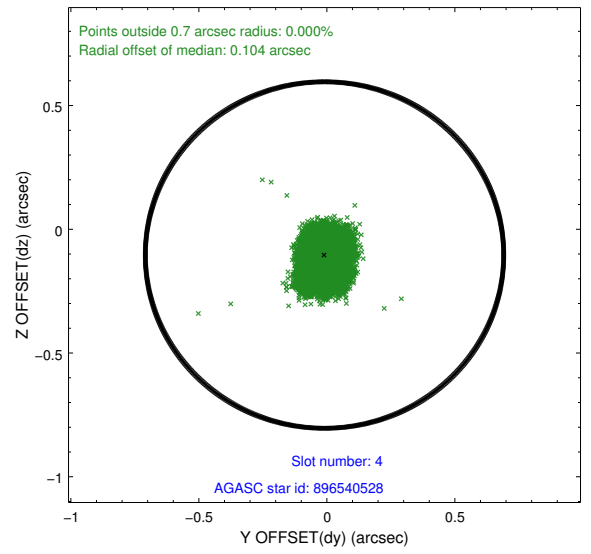
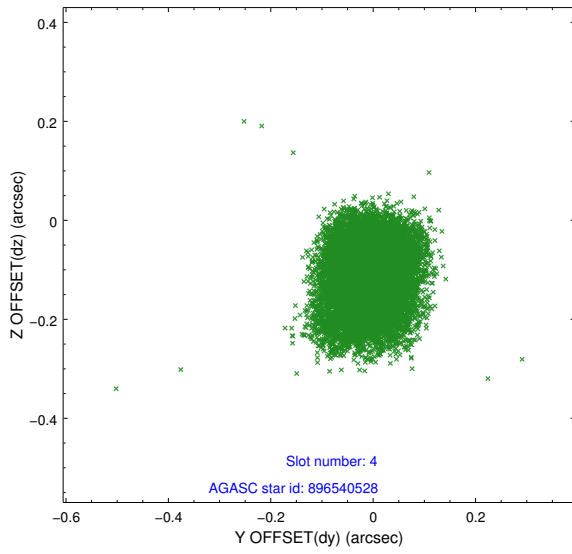
slot	status	id	mag	n_pts	med_dy	med_dz	dr1	dr2	ra	dec	mean_y	mean_z
0	FID	ACIS-I-1	7.24	5262	0.052	-0.023	0.008	0.014	0.000000	0.000000	932.82	-835.47
1	FID	ACIS-I-5	7.23	5261	-0.167	0.068	0.008	0.014	0.000000	0.000000	-1815.36	1062.10
2	FID	ACIS-I-6	7.25	5262	0.023	0.025	0.008	0.013	0.000000	0.000000	398.23	1706.68
3	GUIDE	896536400	8.55	10520	0.092	-0.085	0.074	0.118	267.359146	-29.438655	-324.41	-1581.30
4	GUIDE	896540528	8.25	10523	-0.009	-0.104	0.088	0.138	267.368305	-29.314773	-771.23	-1593.00
5	GUIDE	896543792	9.84	10490	0.046	0.036	0.123	0.200	267.148052	-29.957989	1597.74	-2067.59
6	GUIDE	898247688	8.66	10520	-0.145	0.240	0.081	0.131	268.426687	-29.012154	-2142.80	1628.27
7	GUIDE	898248800	8.24	10520	0.020	-0.086	0.062	0.098	267.977609	-29.931731	1273.38	501.76

2.4 Star Slots

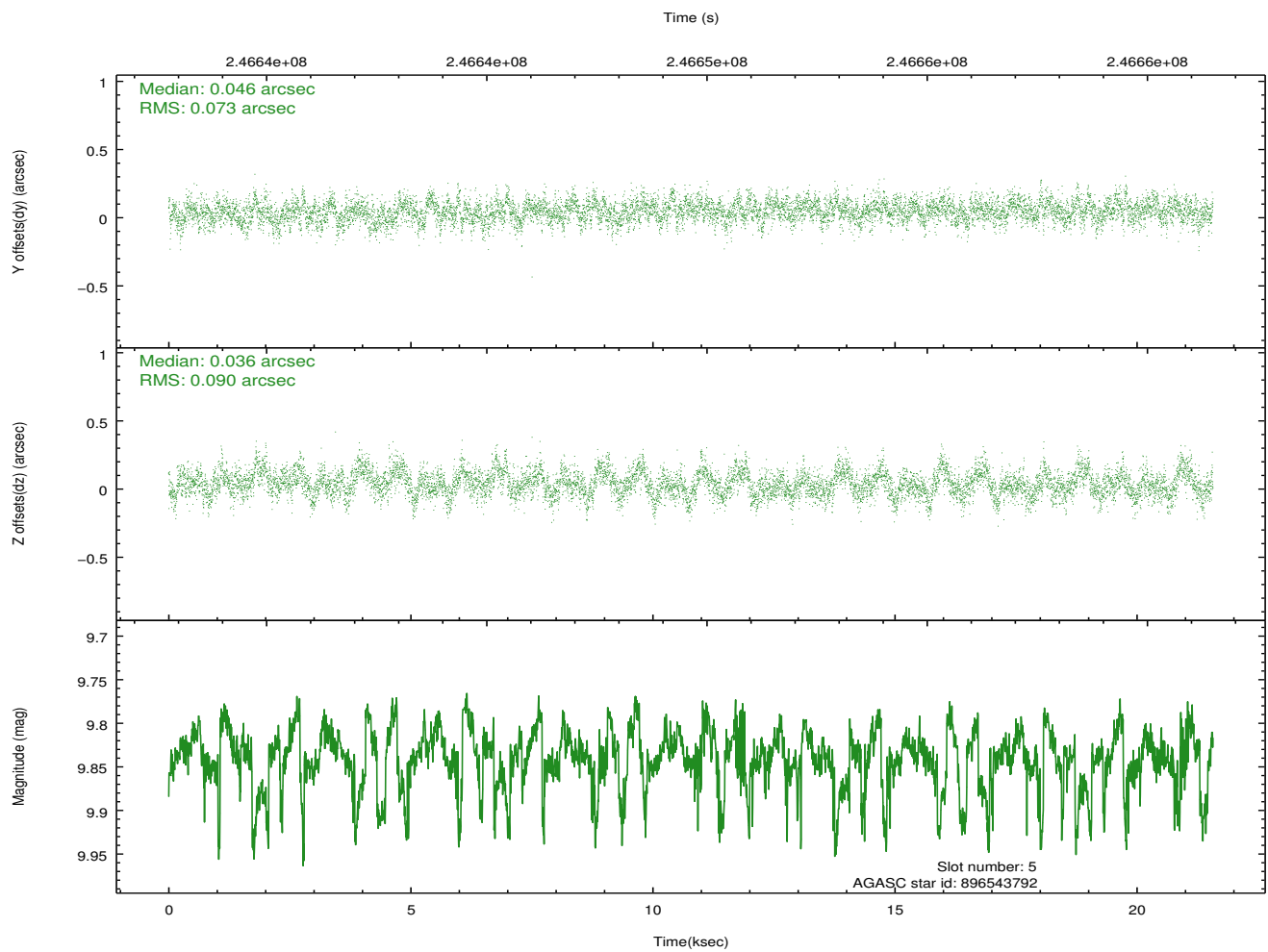
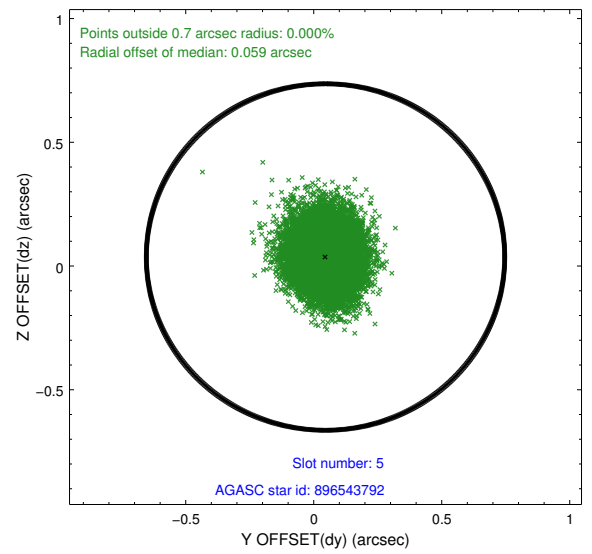
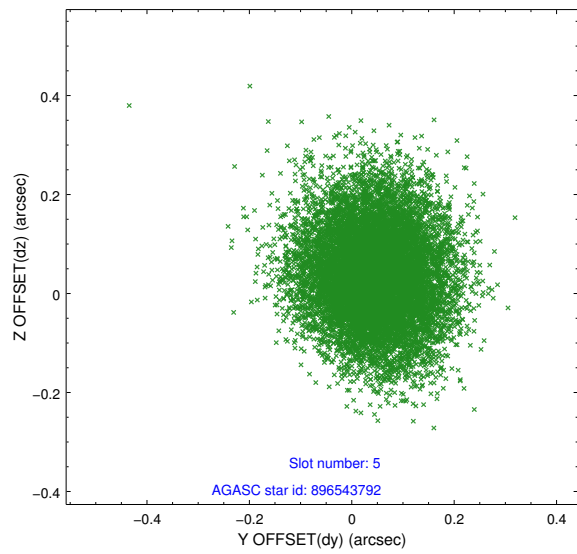
2.4.1 Slot 3



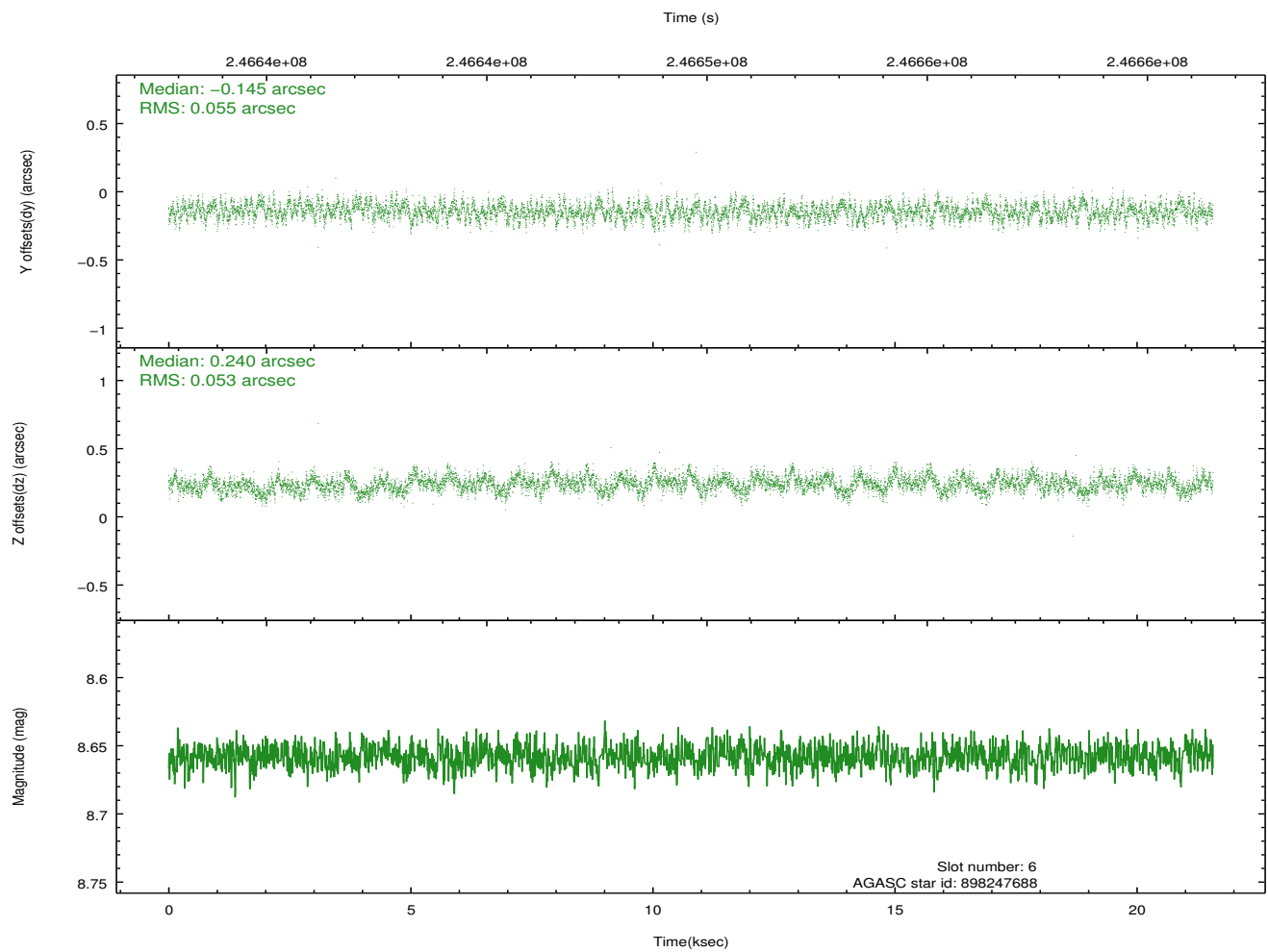
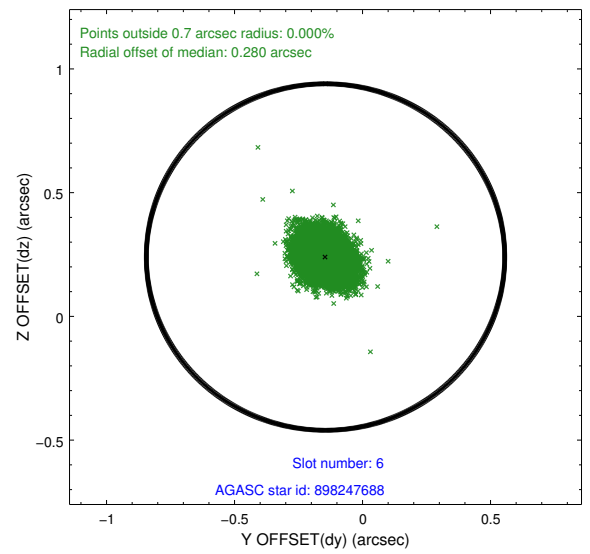
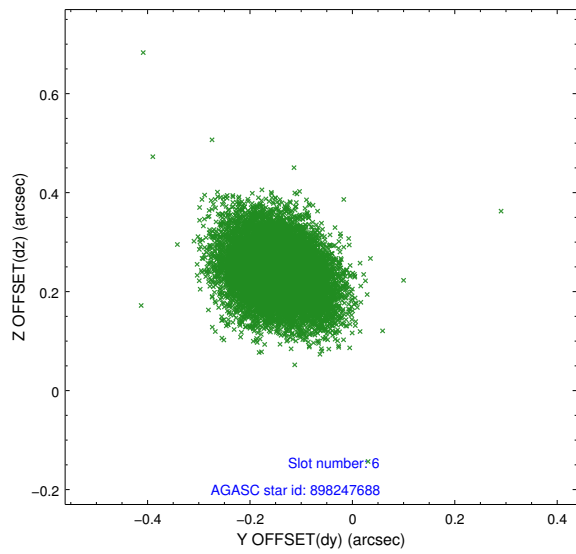
2.4.2 Slot 4



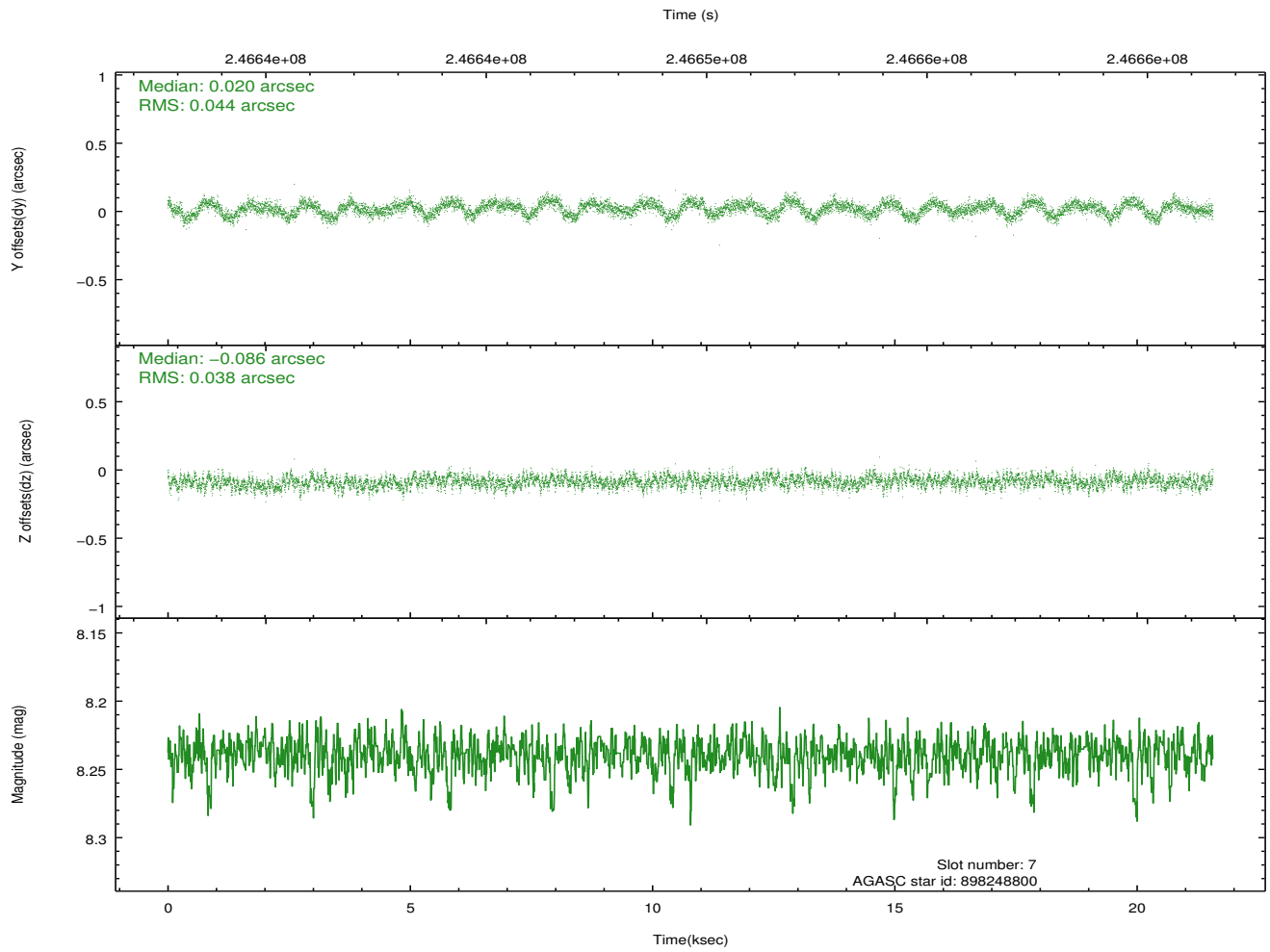
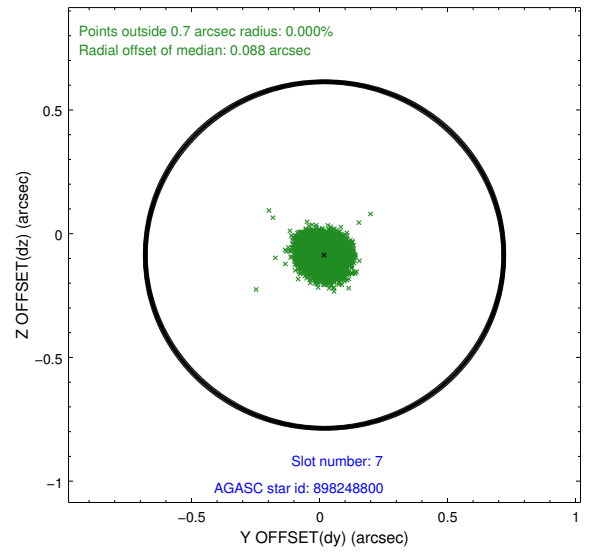
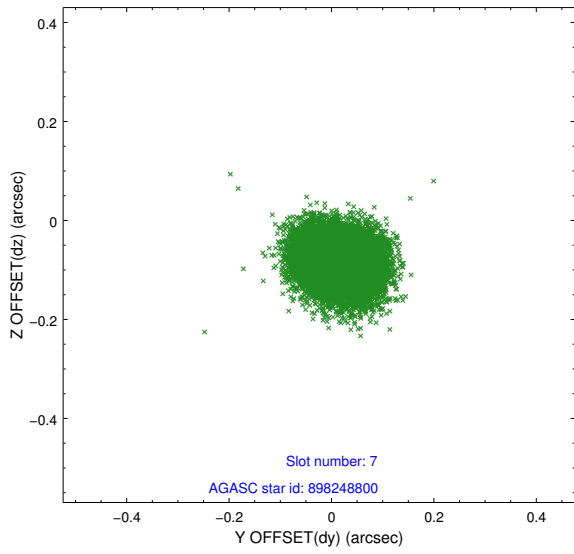
2.4.3 Slot 5



2.4.4 Slot 6

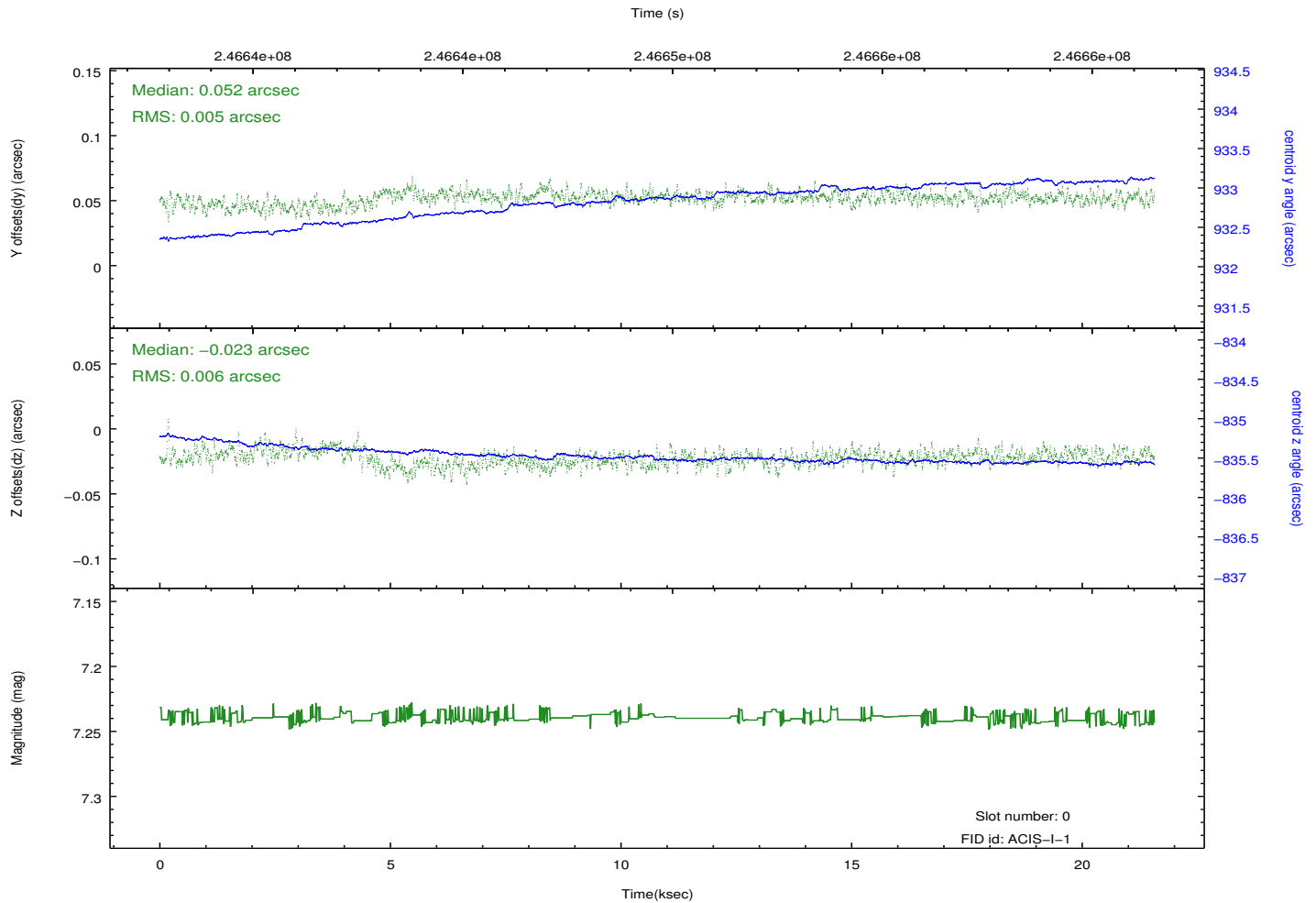
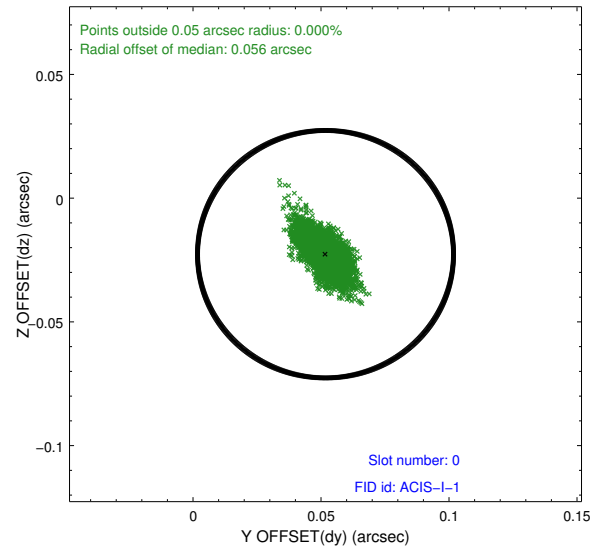
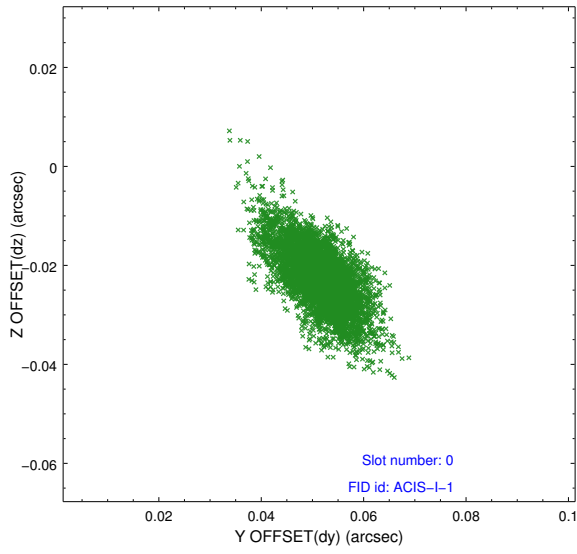


2.4.5 Slot 7

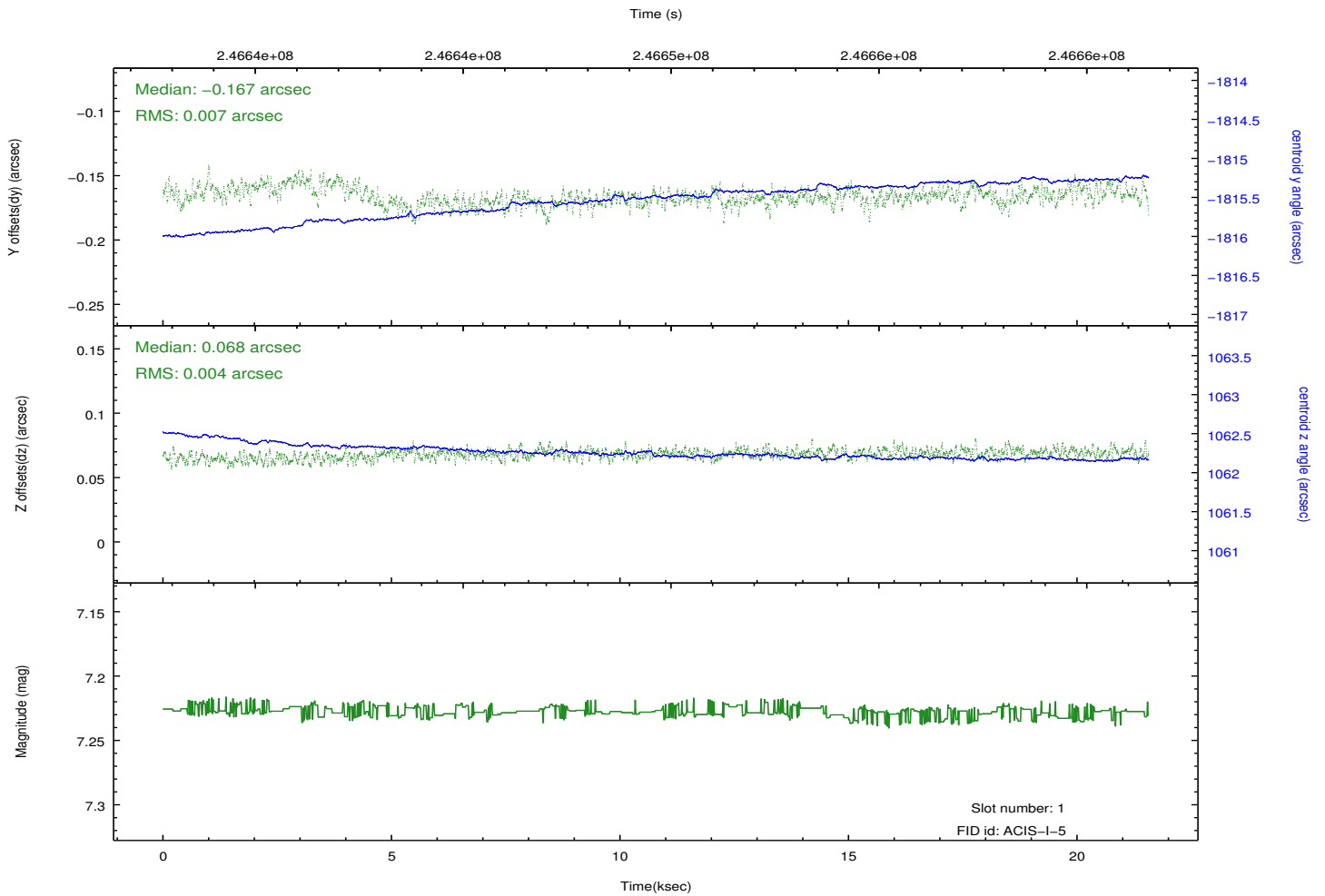
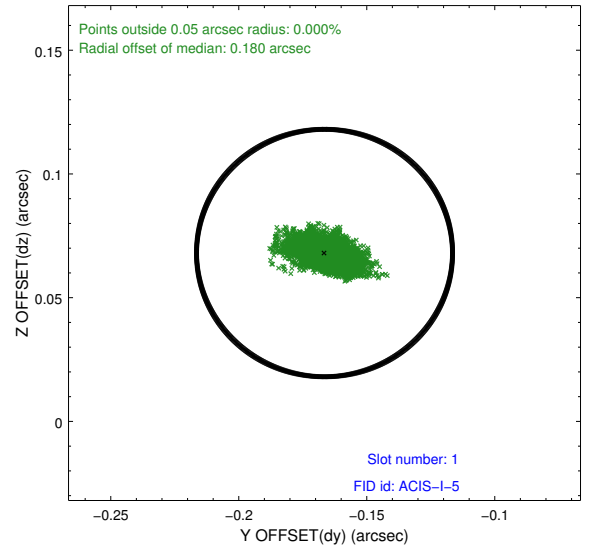
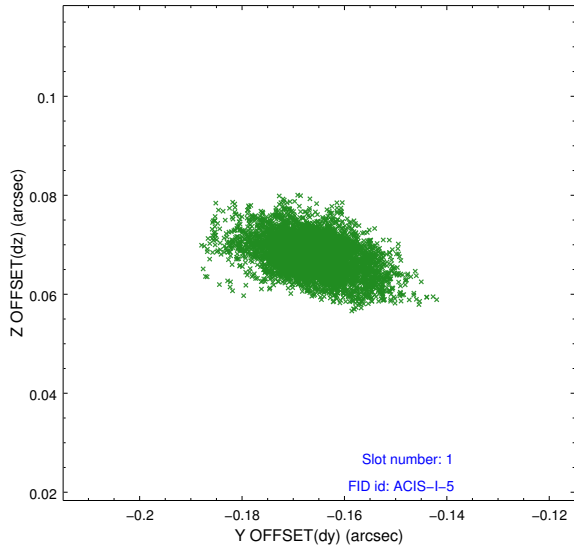


2.5 FID Slots

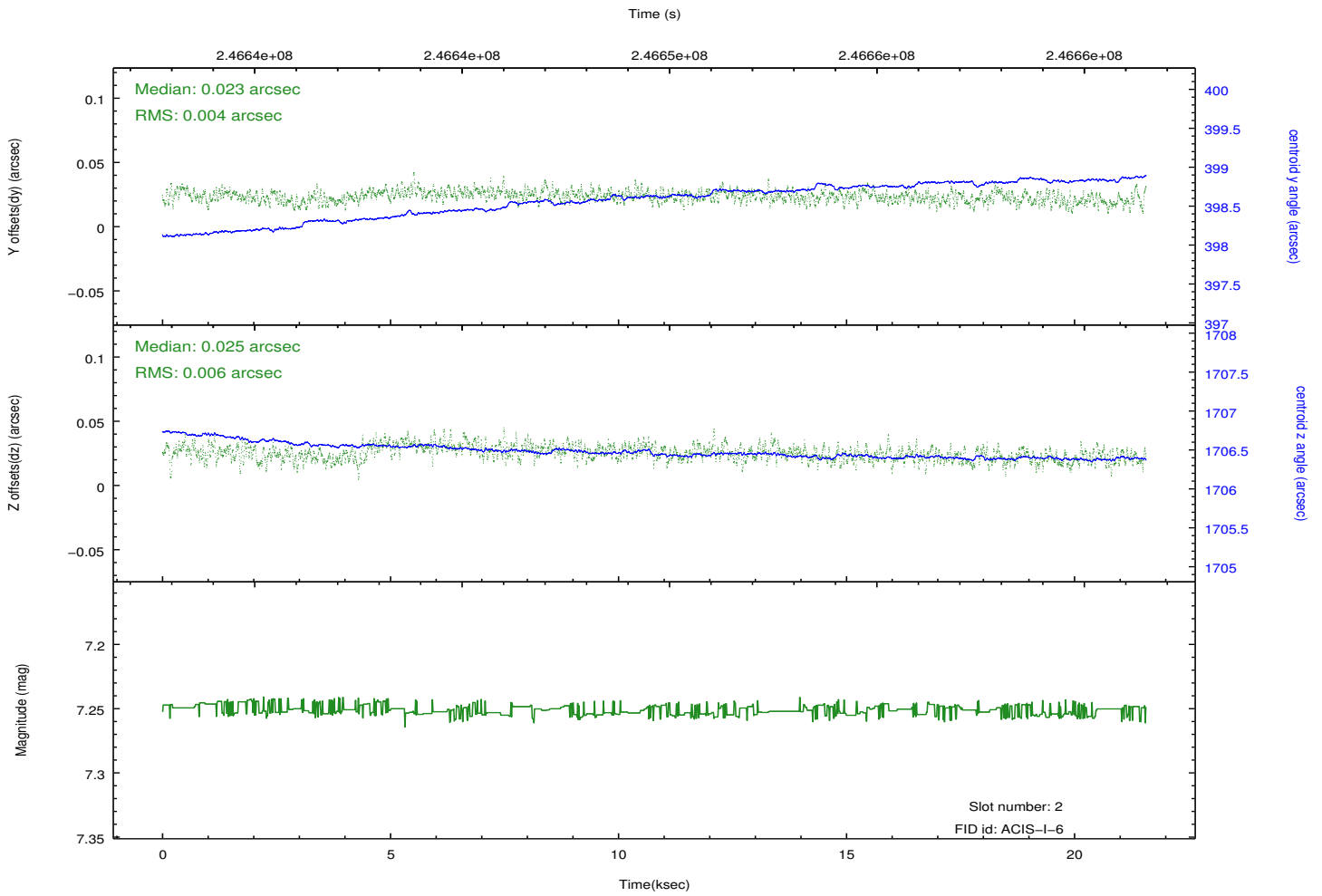
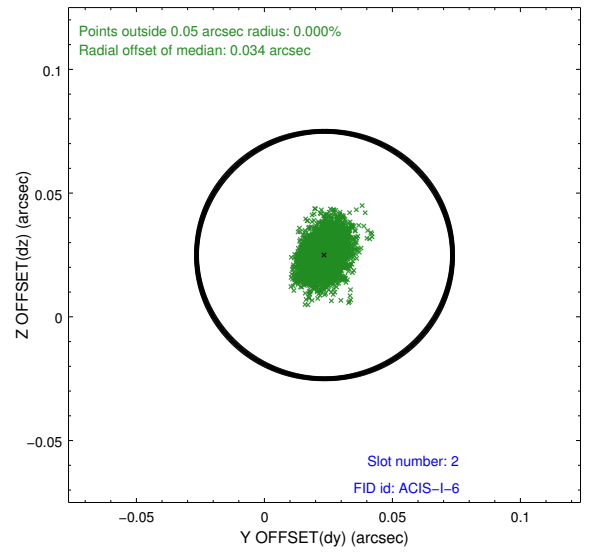
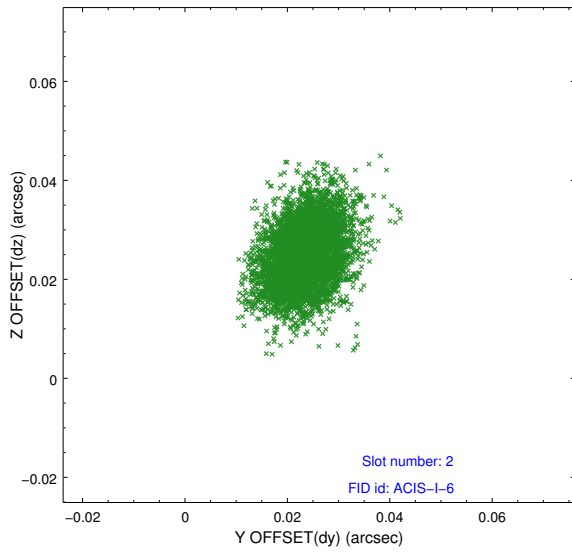
2.5.1 Slot 0



2.5.2 Slot 1



2.5.3 Slot 2



A Summary

A.1 Status

V&V Scientist	Jen Lauer
V&V Date (YYYY-MM-DD)	2013.01.28
V&V Edition	1
V&V Disposition and Status	OK
V&V Charge Time	20.95355

A.2 Comments

Joint Proposal: HST