

V&V Reference Report

L2 ASCDS Version : 8.4.3.1

Observation 6415 - L2 Version 2
Chandra X-Ray Center

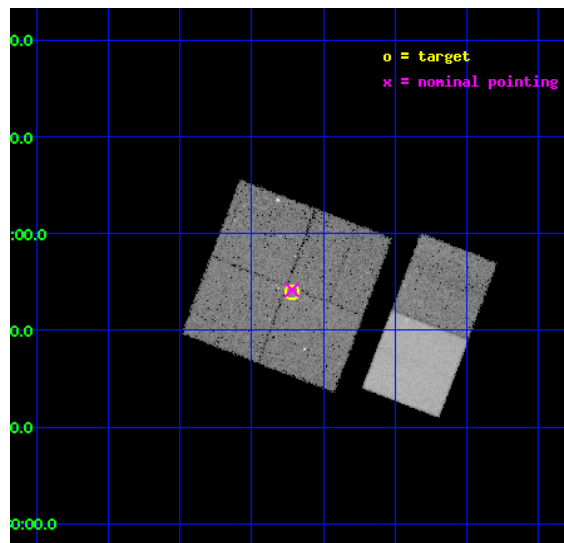
L2 Processing Date : Apr 6 2012

Contents

1	Front	2
2	OBI	3
2.1	OBI	3
2.1.1	Images	3
2.1.2	Bias	3
2.1.3	Parameters	4
2.1.4	Events	4
2.2	Compared Parameters	5
2.3	Aspect	6
2.4	Star Slots	9
2.4.1	Slot 3	9
2.4.2	Slot 4	10
2.4.3	Slot 5	11
2.4.4	Slot 6	12
2.4.5	Slot 7	13
2.5	FID Slots	14
2.5.1	Slot 0	14
2.5.2	Slot 1	15
2.5.3	Slot 2	16
A	Summary	17
A.1	Status	17
A.2	Comments	17

1 Front

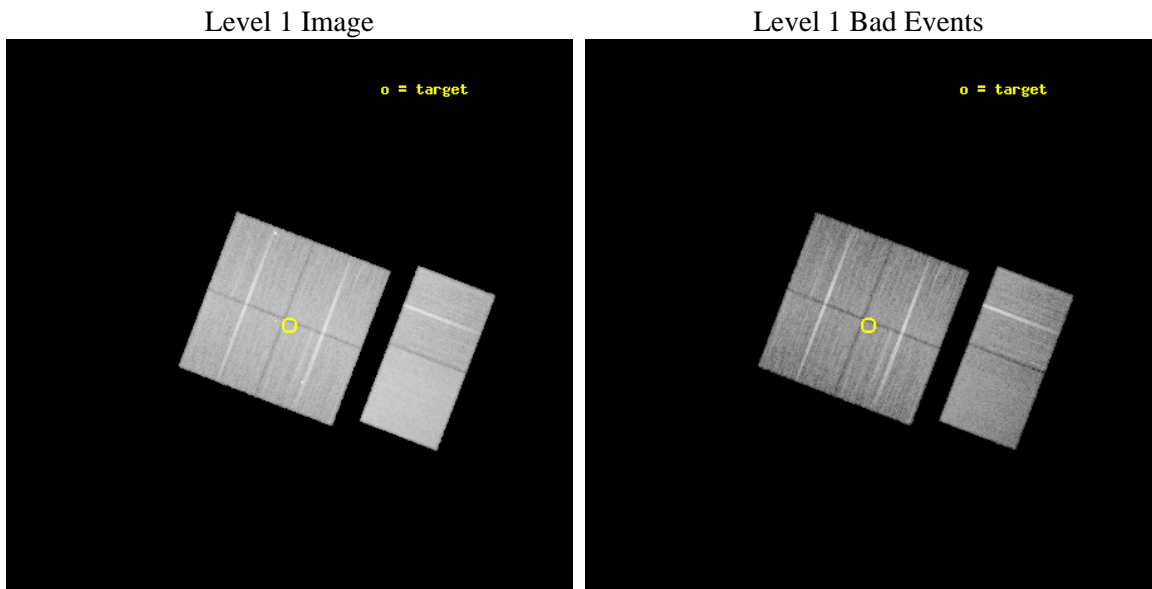
seq_num	200390	Sequence number
obs_id	6415	Observation id
title	CXO Monitoring of V1647 Ori: the X-ray Evolution of Pre-main Sequence Accretion Burst	Proposal title
observer	Dr. Joel Kastner	Principal investigator
object	IRAS05436-0007	Source name
dtcycle	0	
cycle	P	events from which exps? Prim/Second/Both
ra_targ	86.554583	Observer's specified target RA [deg]
dec_targ	-0.101389	Observer's specified target Dec [deg]
ra_nom	86.554750242605	Nominal RA [deg]
dec_nom	-0.096768593859322	Nominal Dec [deg]
roll_nom	110.95084297827	Nominal Roll [deg]
revision	2	Processing version of data
ontime	20716.799922884	Sum of GTIs [s]
livetime	20454.471328101	Livetime [s]
ontime0	20716.799922884	Sum of GTIs [s]
ontime1	20713.558932722	Sum of GTIs [s]
ontime2	20716.799922884	Sum of GTIs [s]
ontime3	20716.799922884	Sum of GTIs [s]
ontime6	20716.799922884	Sum of GTIs [s]
ontime7	20716.799922884	Sum of GTIs [s]
l2events	200421	Number of level 2 events



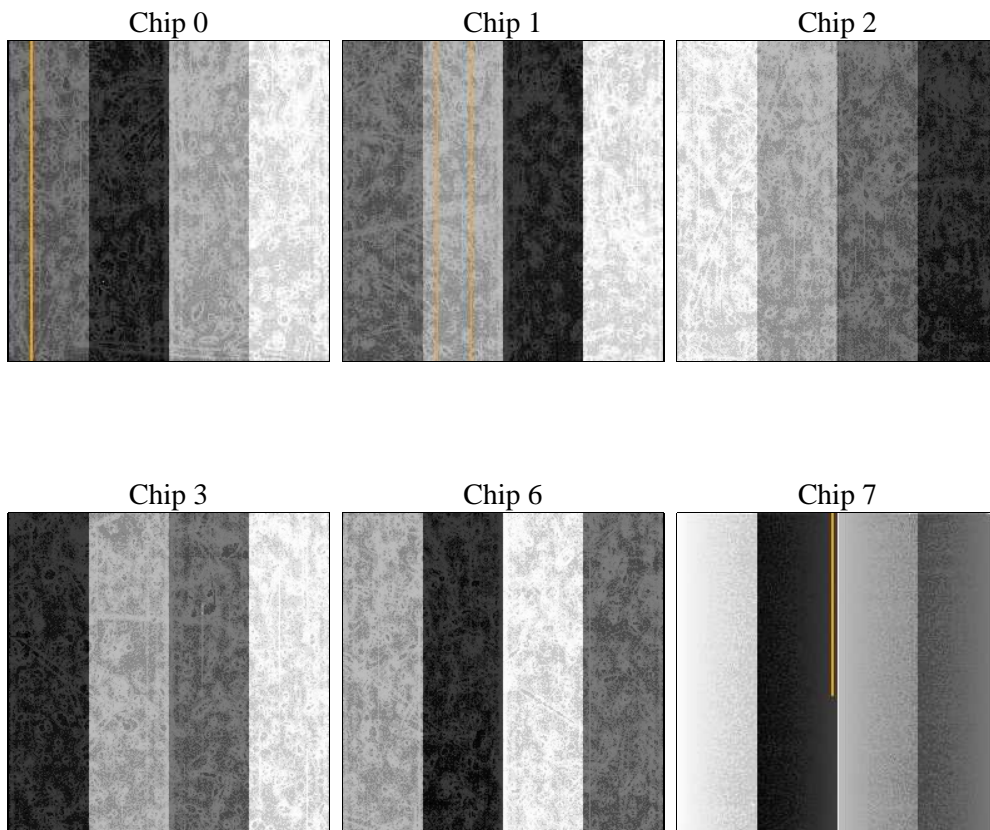
2 OBI

2.1 OBI

2.1.1 Images



2.1.2 Bias



2.1.3 Parameters

obi_num	0	Obi number	sched_exp_time	20600.000000	[s] Scheduled observation exposure time
ascdsver	8.4.3.1	Processing system revision	ontime	20716.799922884	Sum of GTIs [s]
caldbver	4.4.9	 	ontime0	20716.799922884	Sum of GTIs [s]
date	2012-04-06T19:26:42	Date and time of file creation	ontime1	20713.558932722	Sum of GTIs [s]
revision	2	Processing version of data	ontime2	20716.799922884	Sum of GTIs [s]
			ontime3	20716.799922884	Sum of GTIs [s]
			ontime6	20716.799922884	Sum of GTIs [s]
			ontime7	20716.799922884	Sum of GTIs [s]
			l1events	1219805	Number of level 1 events

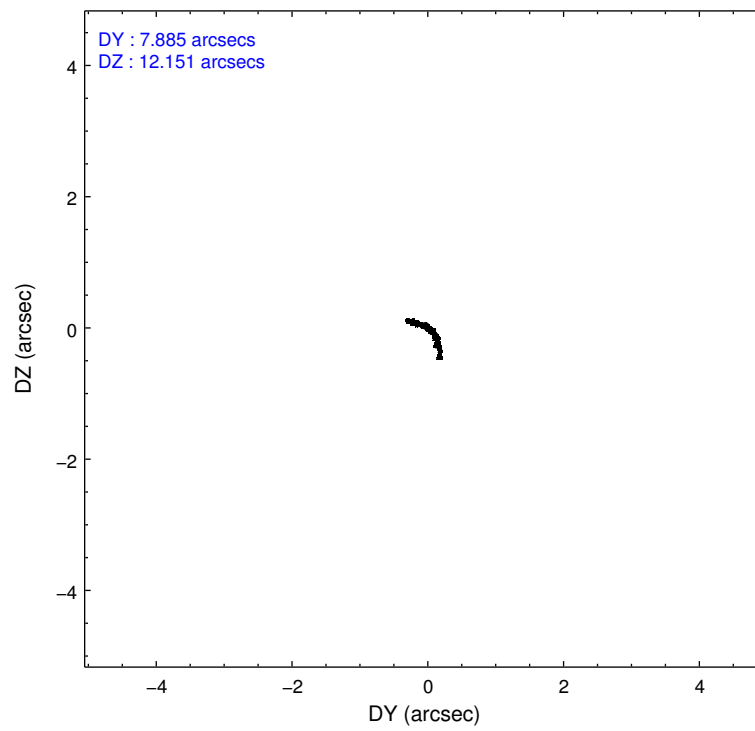
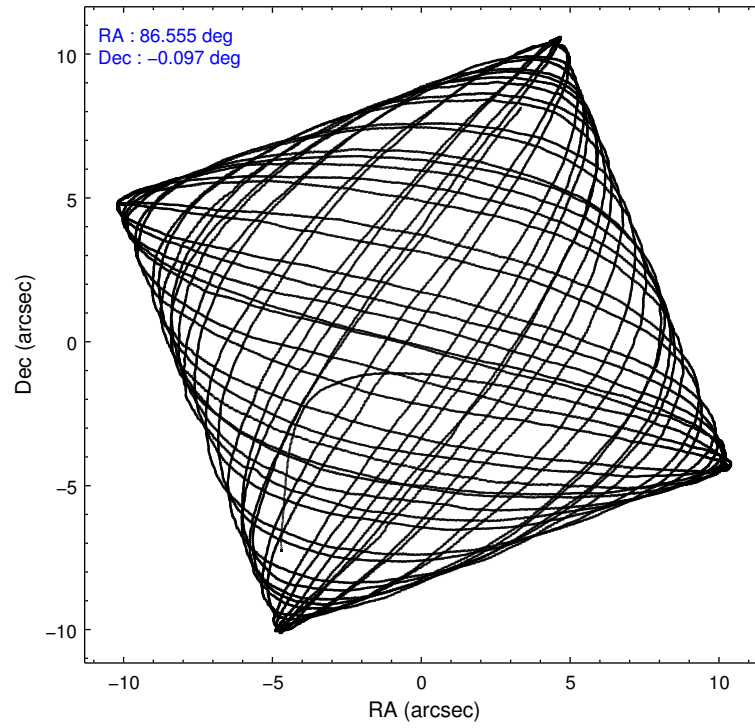
2.1.4 Events

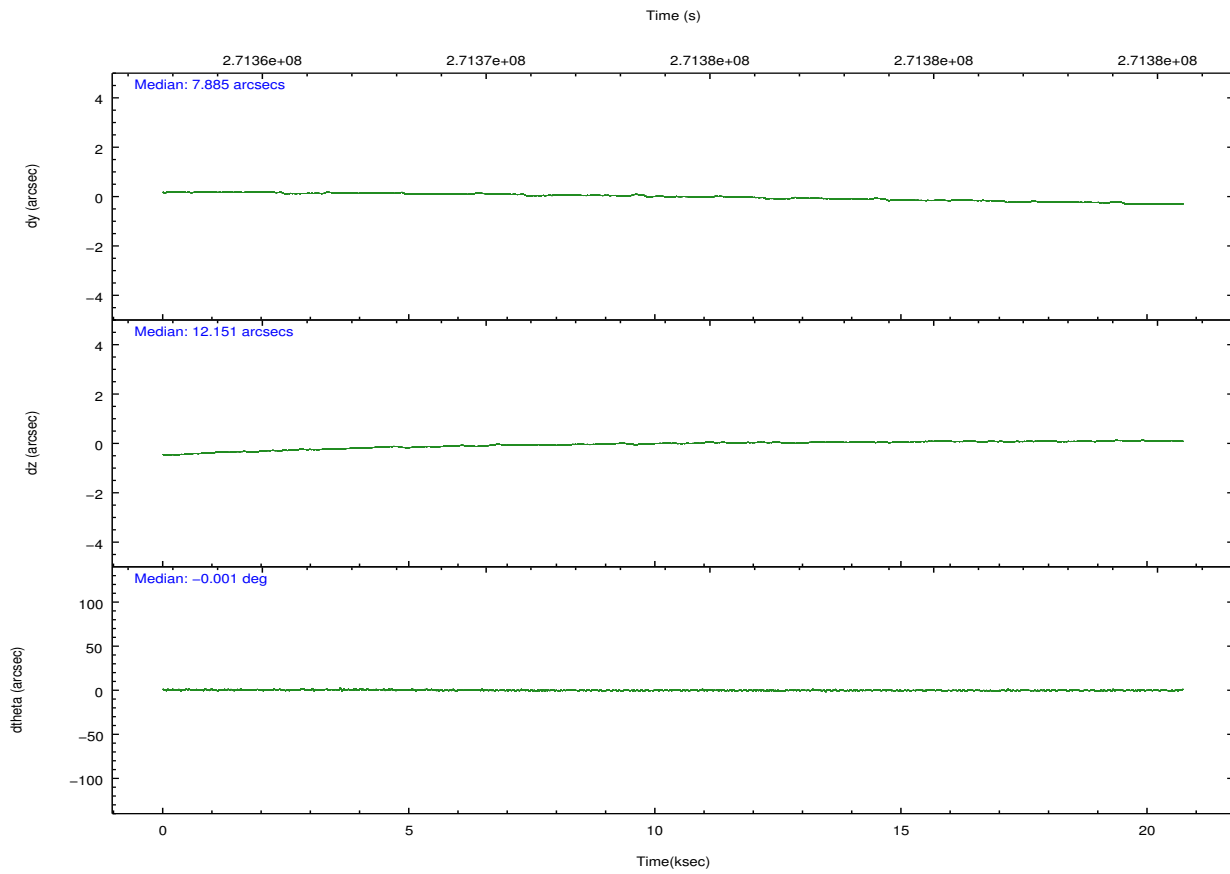
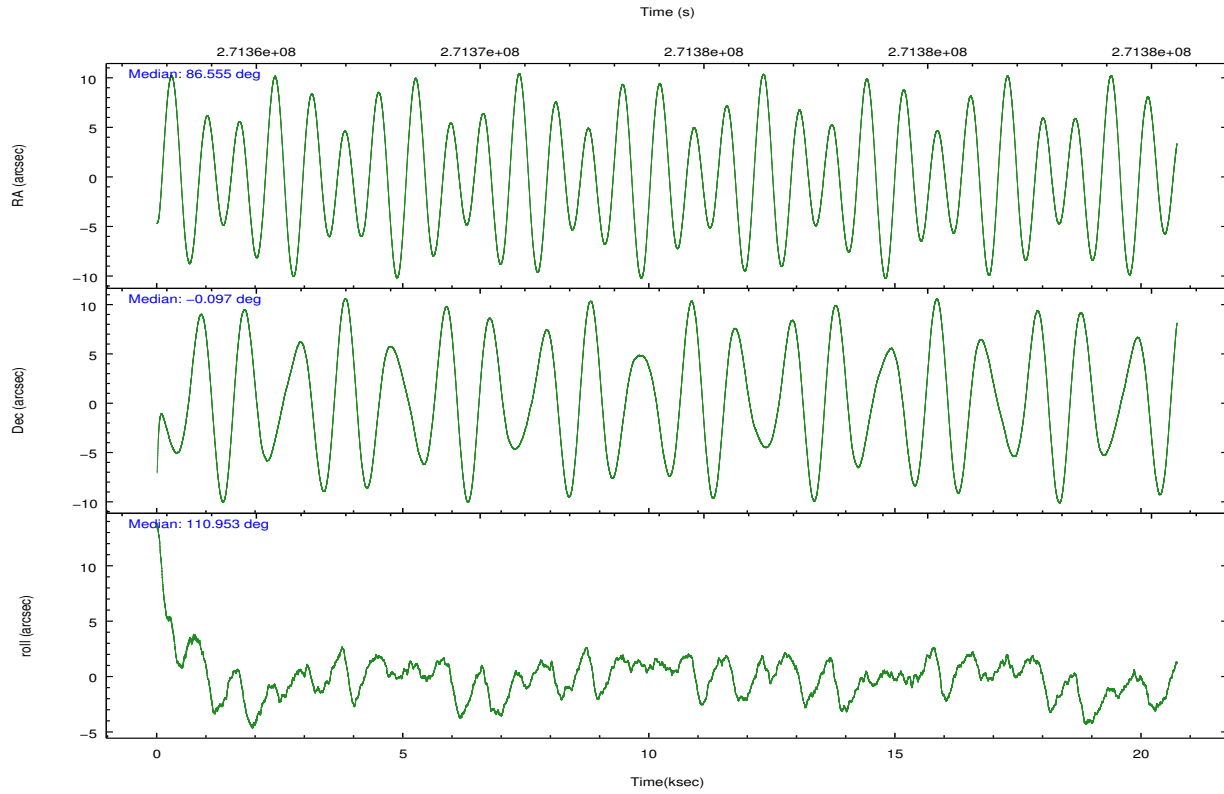
	ccd 0	ccd 1	ccd 2	ccd 3	ccd 6	ccd 7		ccd 0	ccd 1	ccd 2	ccd 3	ccd 6	ccd 7
level 1 events	179711	181225	195658	192016	204098	267097	grade 0 events	10790	9577	10400	10570	9198	9666
rejected events	156131	157763	173658	169557	181755	162194		6%	5%	5%	5%	4%	3%
rejected %	86%	87%	88%	88%	89%	60%	grade 1 events	112	96	140	146	105	257
								0%	0%	0%	0%	0%	0%
							grade 2 events	5375	5650	4822	4659	5116	22467
								2%	3%	2%	2%	2%	8%
							grade 3 events	2381	2460	2205	2222	2279	9490
								1%	1%	1%	1%	1%	3%
							grade 4 events	2201	2374	2170	2186	2219	9416
								1%	1%	1%	1%	1%	3%
							grade 5 events	7773	8438	7394	8908	9396	25336
								4%	4%	3%	4%	4%	9%
							grade 6 events	4061	4800	3662	4007	4765	60041
								2%	2%	1%	2%	2%	22%
							grade 7 events	147018	147830	164865	159318	171020	130424
								81%	81%	84%	82%	83%	48%

2.2 Compared Parameters

Parameter	Planned	Actual	Parameter	Planned	Actual
Instrument	ACIS	ACIS	Obspar format version number	7	7
Detector	ACIS-012367	ACIS-012367	Obspar file type	PREDICTED	ACTUAL
Grating	NONE	NONE	Obspar update status	NONE	UPDATED
Data mode	FAINT	FAINT	Number of optional ACIS chips dropped	0	0
Observation mode	POINTING	POINTING	On-chip summing requested	N	N
[deg] Pointing RA	86.576085	86.55475024260483	Subarray requested	NONE	NONE
[deg] Pointing Dec	-0.113925	-0.09676859385932163	Alternating exposures requested	N	N
[deg] Pointing Roll	110.742195	110.9508429782687	[s] Primary exposure time	0.000000	3.2
[mm] SIM focus pos	-0.782348	-0.7809083437167272			
[mm] SIM defocus	0	0.001439871863259334			
[mm] SIM translation stage pos	-233.592463	-233.5874344608287			
[mm] SIM translation stage offset	0	-0.005018542100998502			
[s] Observation start time (MET)	271363939.184000	271362229.05945			
Observation start date	2006-08-07T18:51:14	2006-08-07T18:23:49			
[s] Observation end time (MET)	271384539.184000	271385305.39803			
Observation end date	2006-08-08T00:34:34	2006-08-08T00:48:25			
Read mode	TIMED	TIMED			

2.3 Aspect



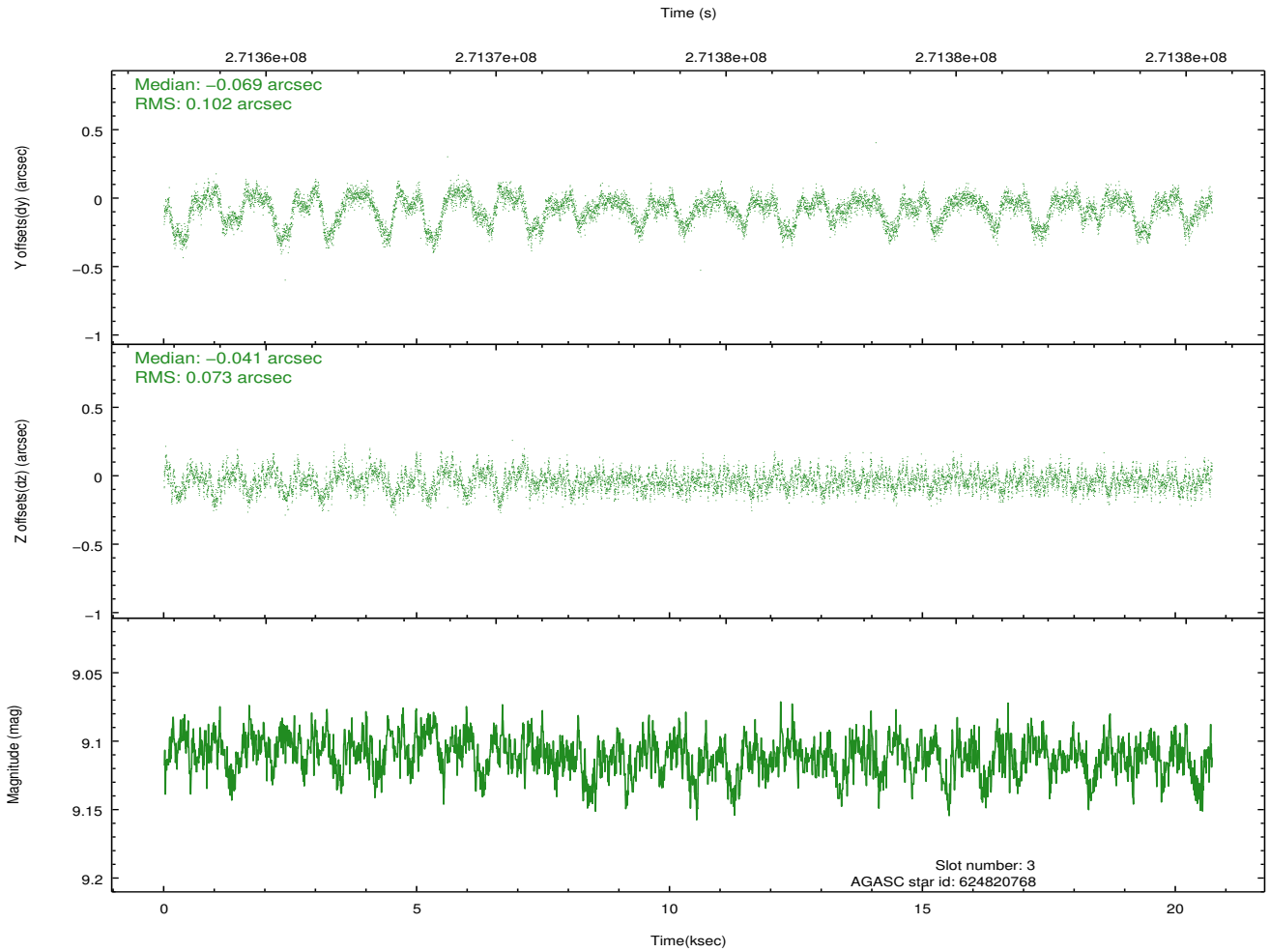
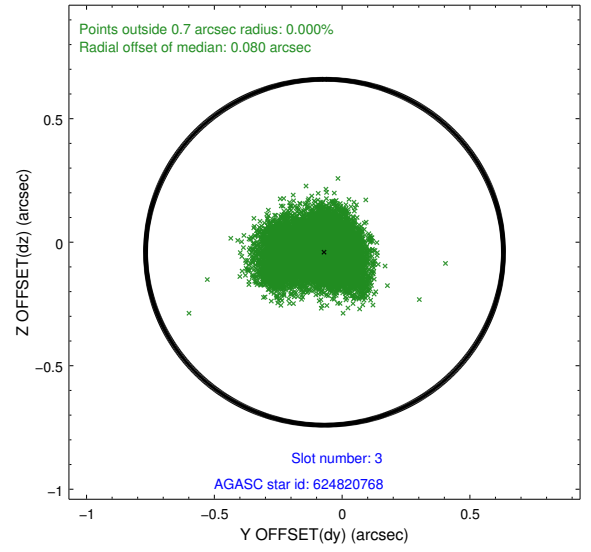
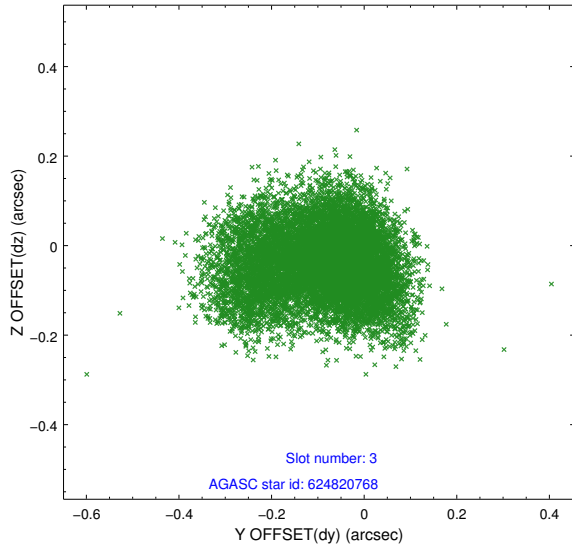


Slot Statistics

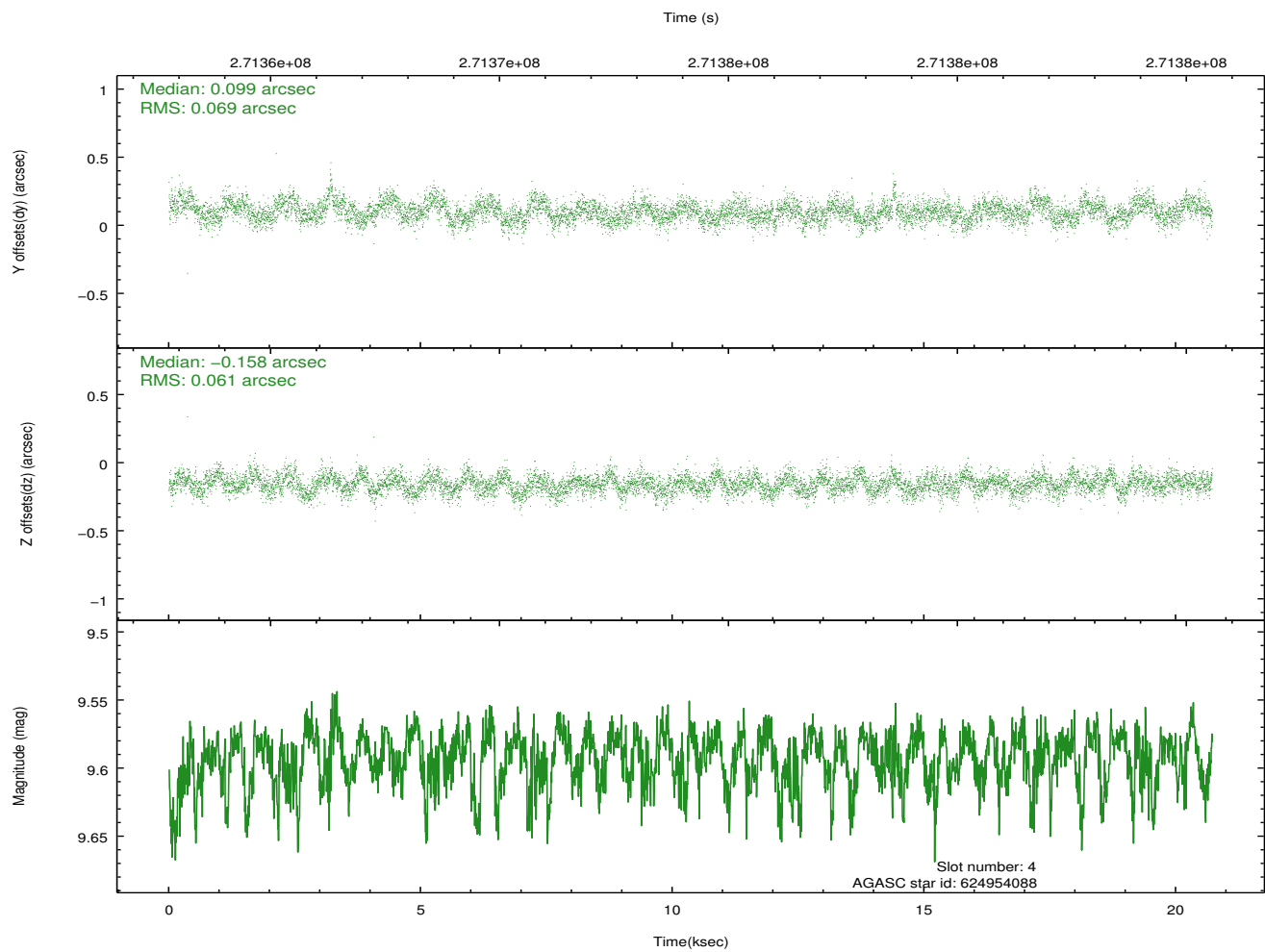
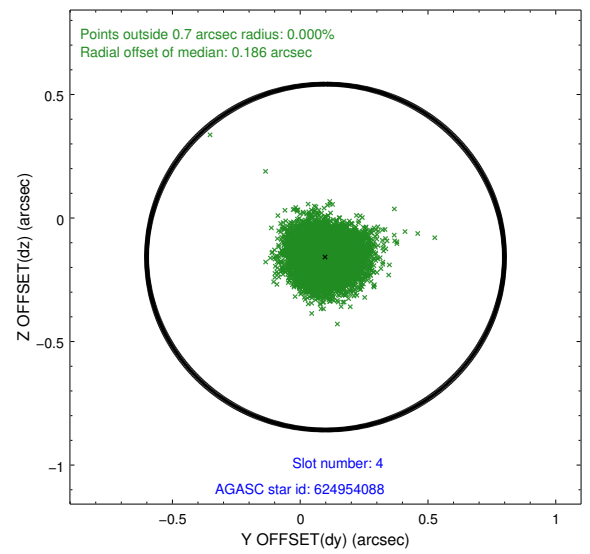
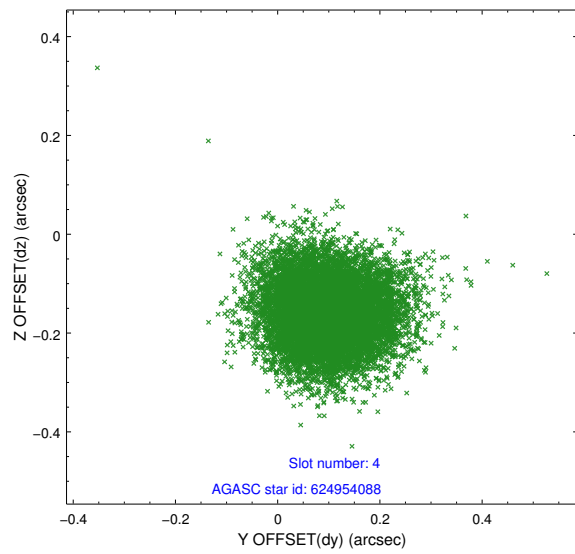
slot	status	id	mag	n_pts	med_dy	med_dz	dr1	dr2	ra	dec	mean_y	mean_z
0	FID	ACIS-I-1	7.24	5053	0.055	-0.041	0.009	0.015	0.000000	0.000000	931.83	-835.68
1	FID	ACIS-I-5	7.23	5054	-0.180	0.064	0.010	0.017	0.000000	0.000000	-1816.39	1061.87
2	FID	ACIS-I-6	7.24	5054	0.034	0.048	0.009	0.015	0.000000	0.000000	397.20	1706.52
3	GUIDE	624820768	9.11	10103	-0.069	-0.041	0.132	0.224	86.202480	-0.061953	651.36	1191.57
4	GUIDE	624954088	9.59	10086	0.099	-0.158	0.098	0.158	86.606399	-0.671650	-1916.05	609.18
5	GUIDE	15074856	9.28	10102	0.018	-0.059	0.087	0.141	85.760802	0.169633	1994.10	2383.45
6	GUIDE	624954400	9.16	10089	0.168	0.089	0.086	0.140	86.607838	-0.762568	-2223.76	720.64
7	GUIDE	15212184	10.05	10087	-0.206	0.173	0.164	0.278	86.645698	0.614228	2362.32	-1162.44

2.4 Star Slots

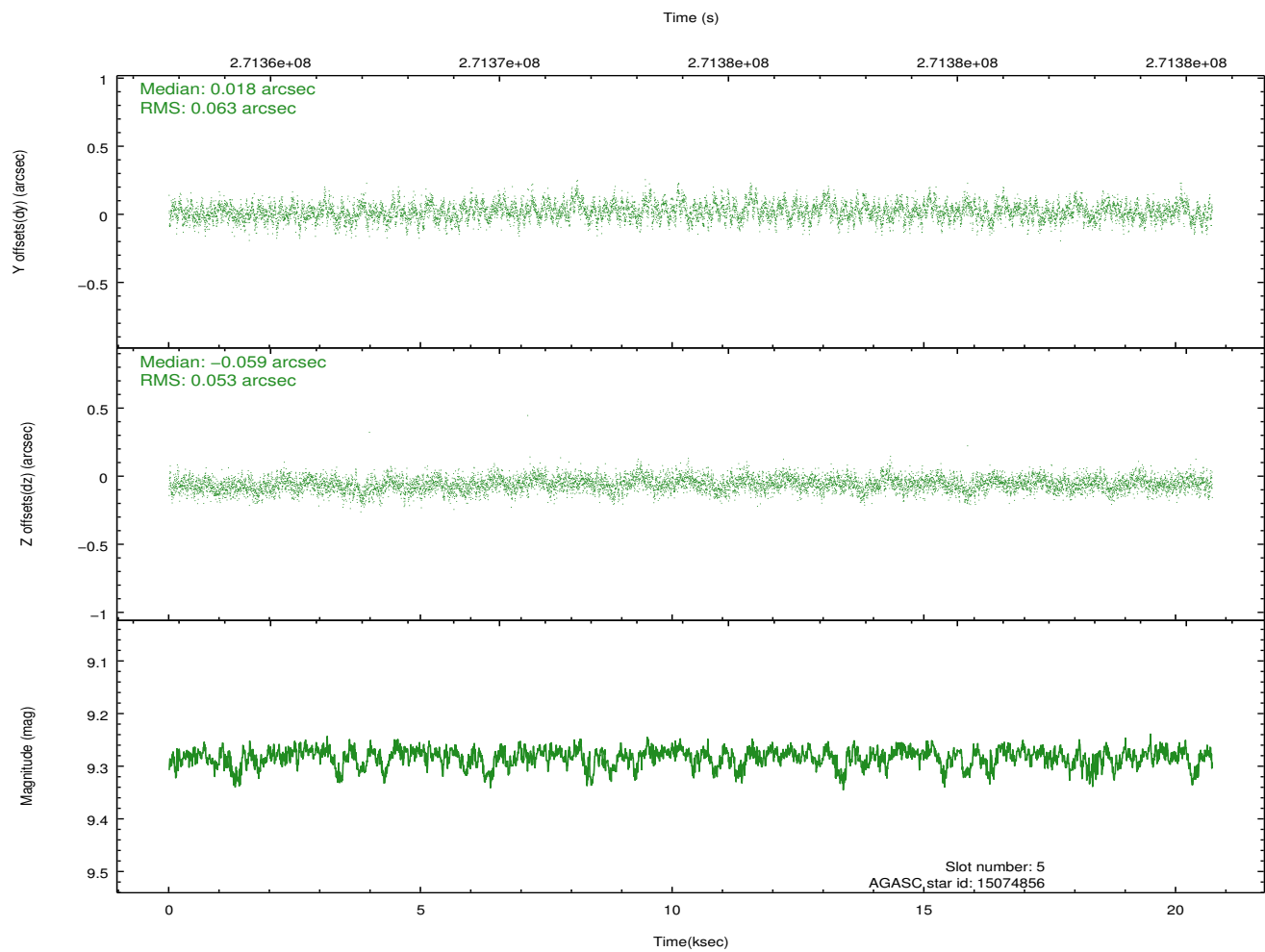
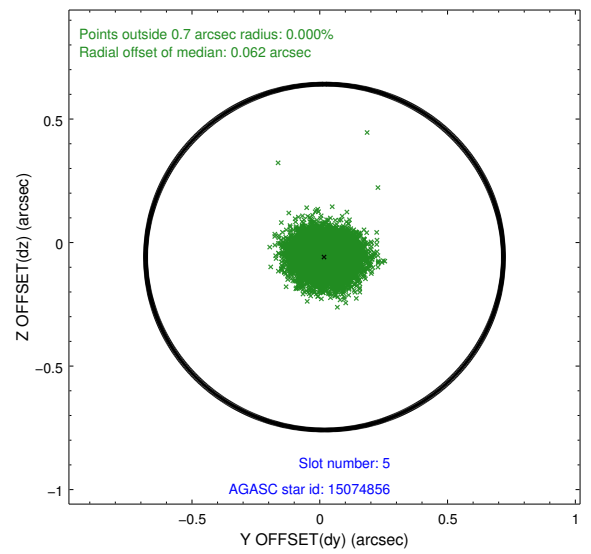
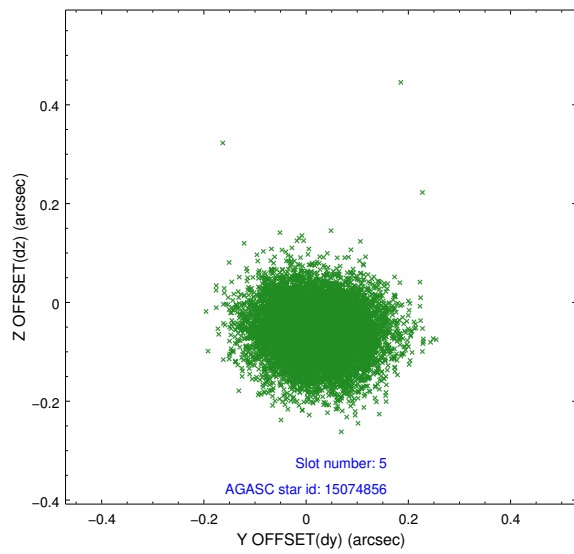
2.4.1 Slot 3



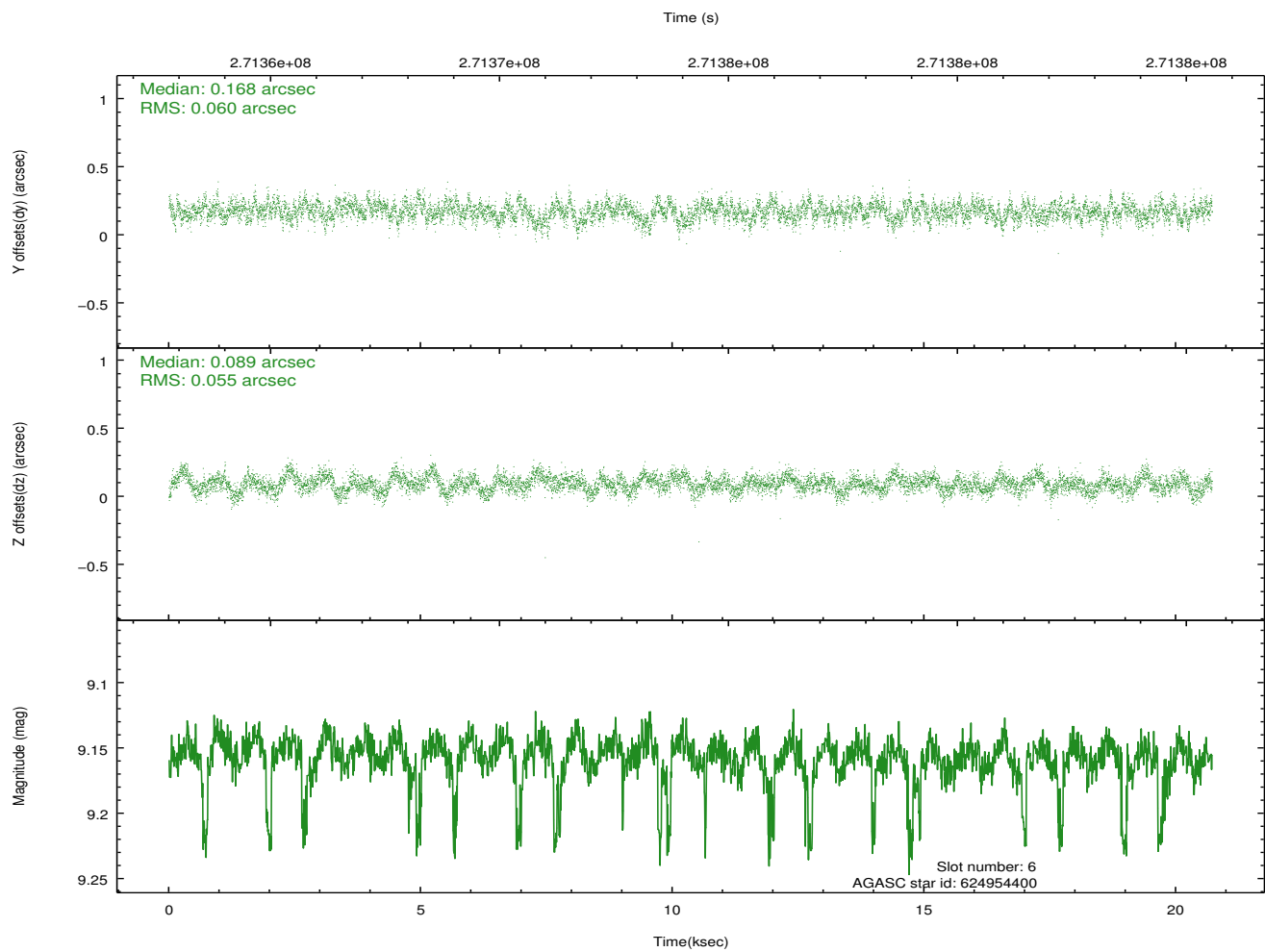
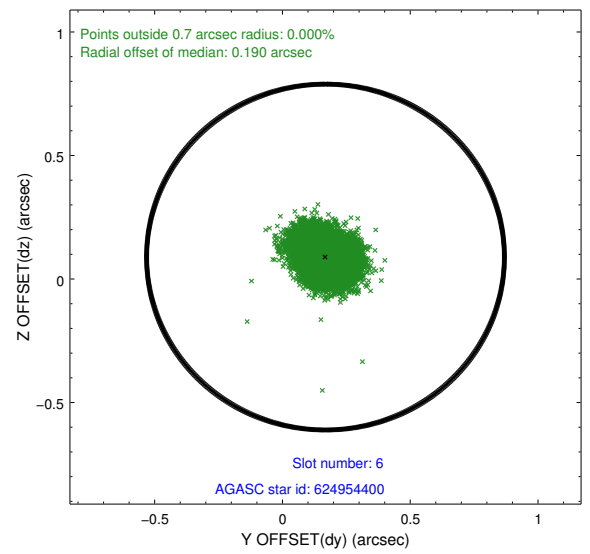
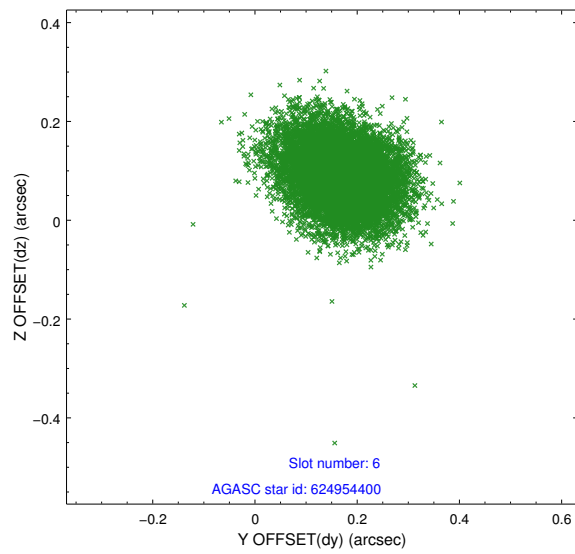
2.4.2 Slot 4



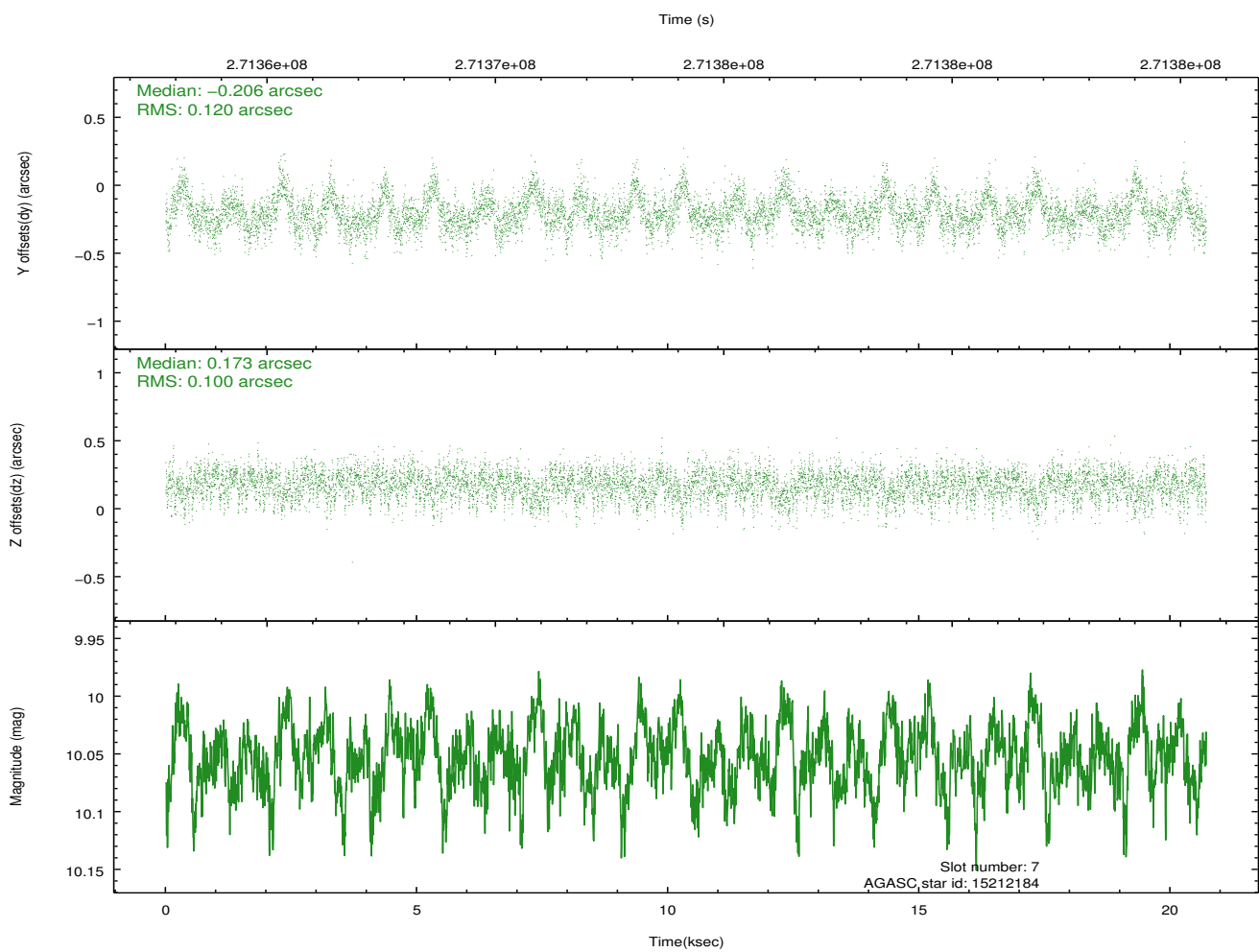
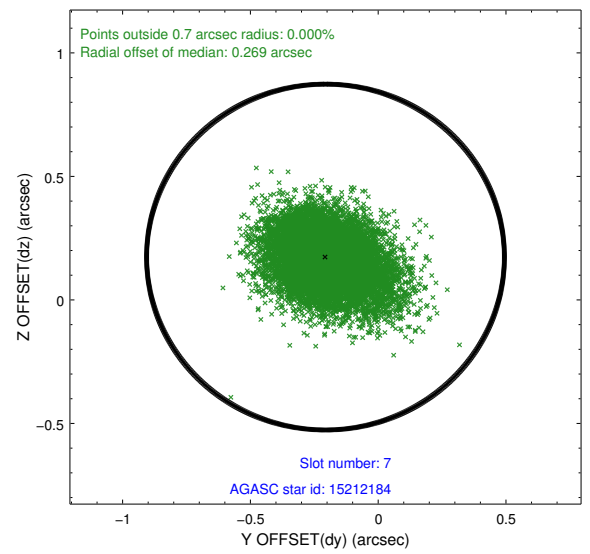
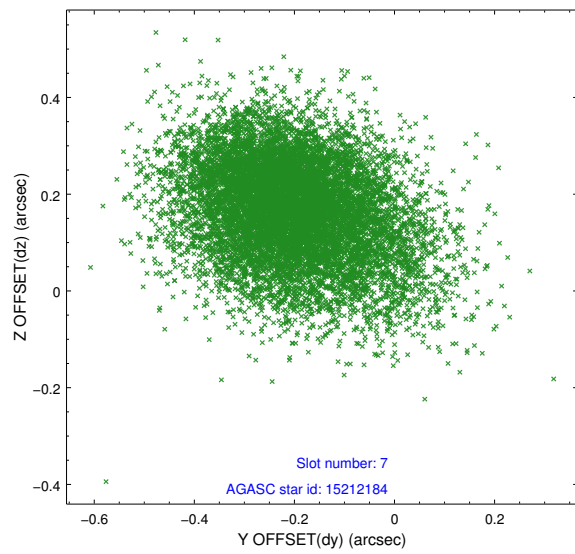
2.4.3 Slot 5



2.4.4 Slot 6

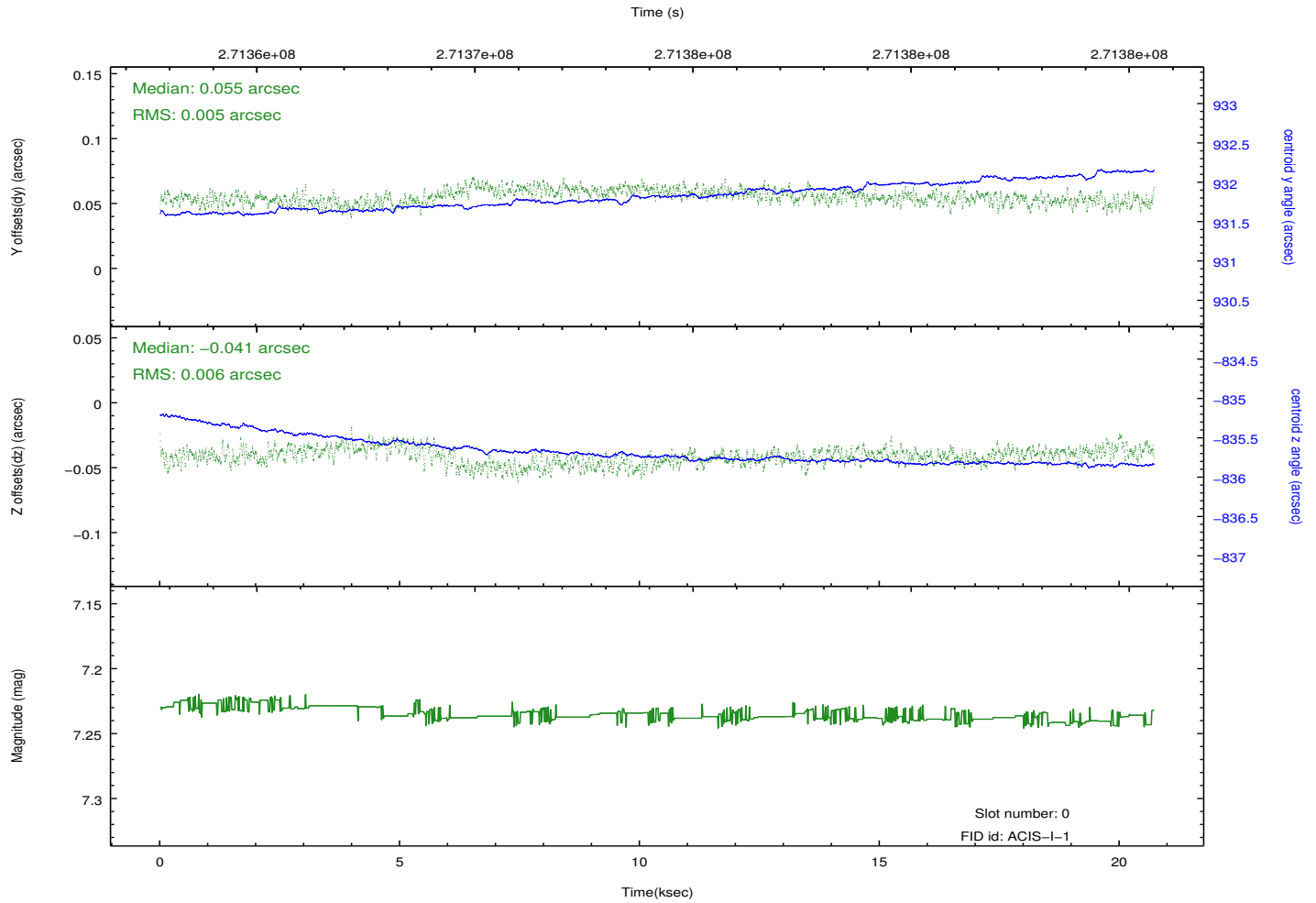
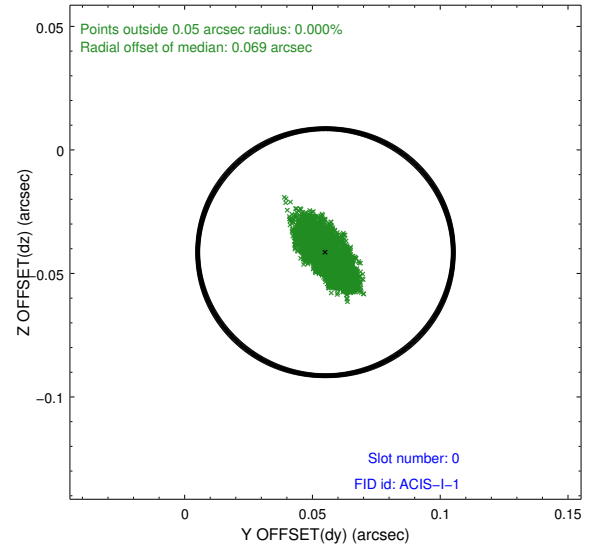
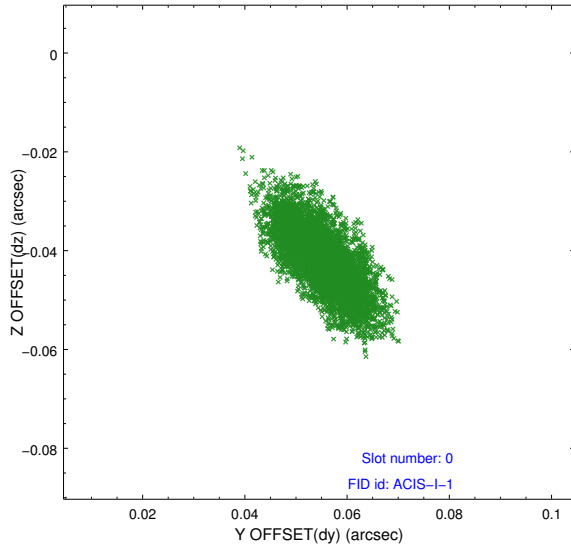


2.4.5 Slot 7

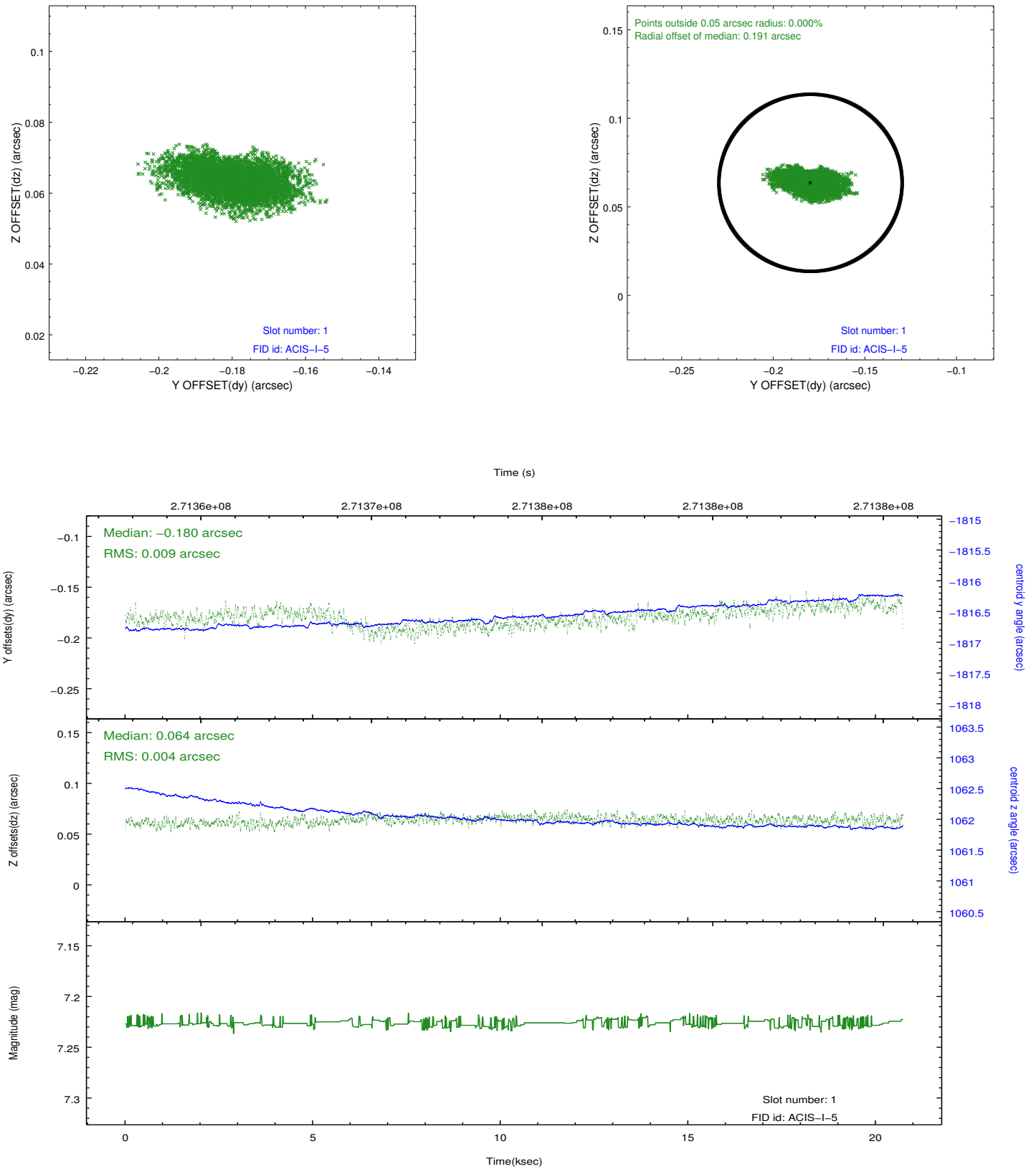


2.5 FID Slots

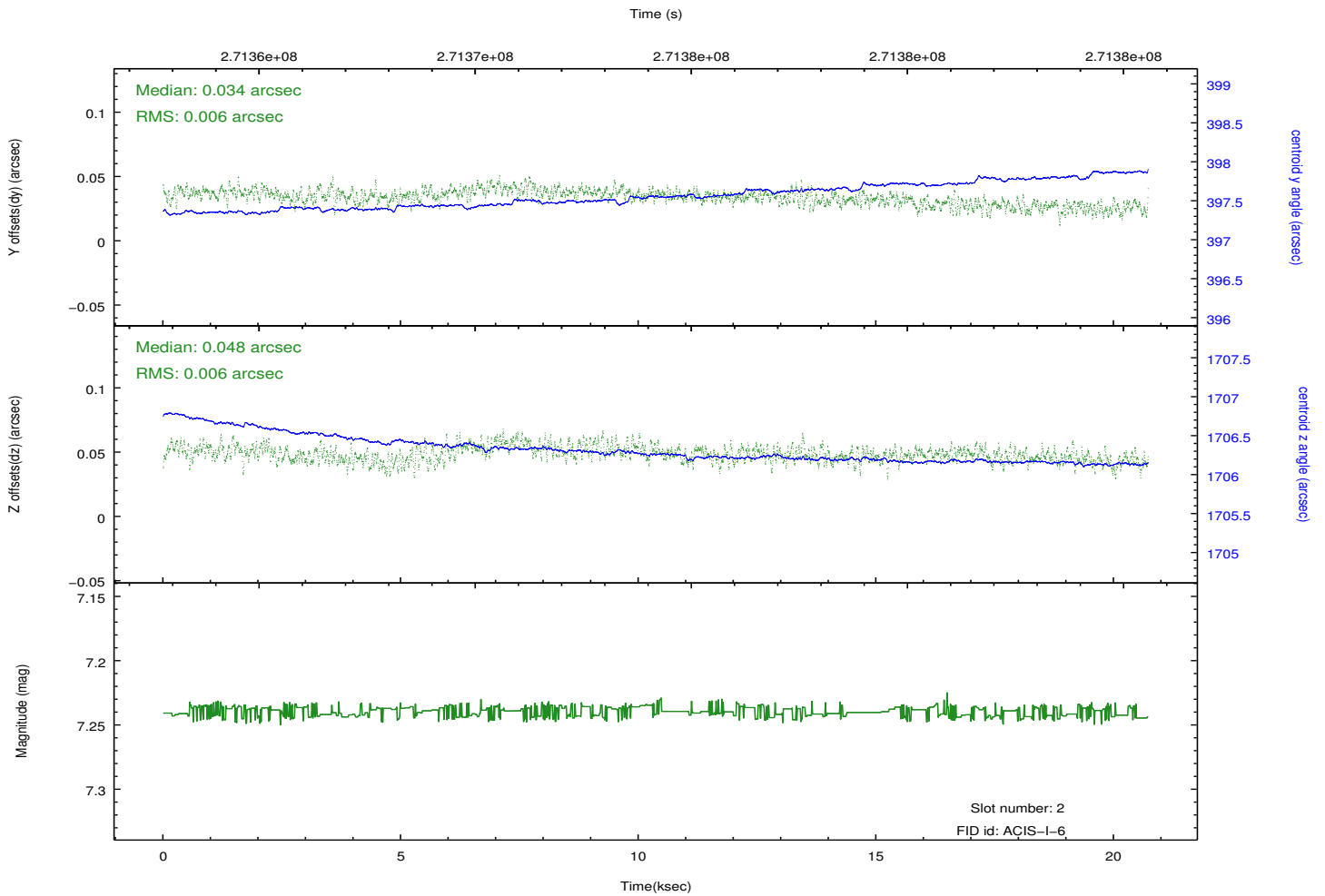
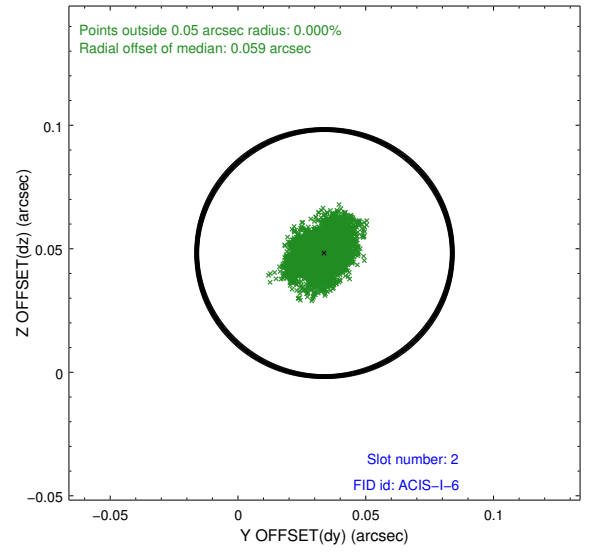
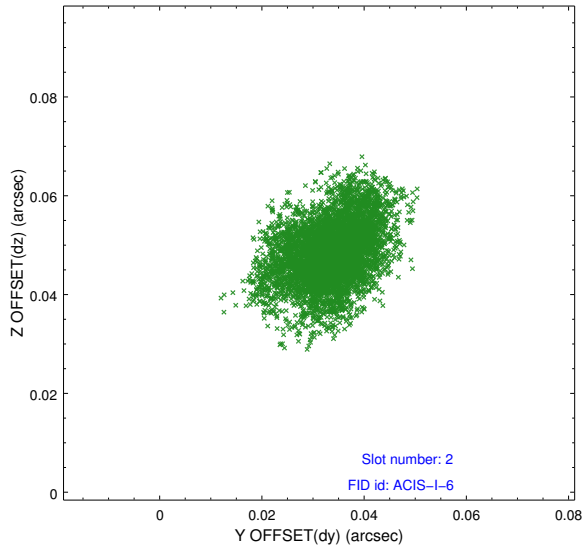
2.5.1 Slot 0



2.5.2 Slot 1



2.5.3 Slot 2



A Summary

A.1 Status

V&V Scientist	Jen Lauer
V&V Date (YYYY-MM-DD)	2012.04.08
V&V Edition	1
V&V Disposition and Status	OK
V&V Charge Time	20.7167999

A.2 Comments

Monitor constraint met.