

V&V Reference Report

L2 ASCDS Version : 8.4.3

Observation 6435 - L2 Version 2
Chandra X-Ray Center

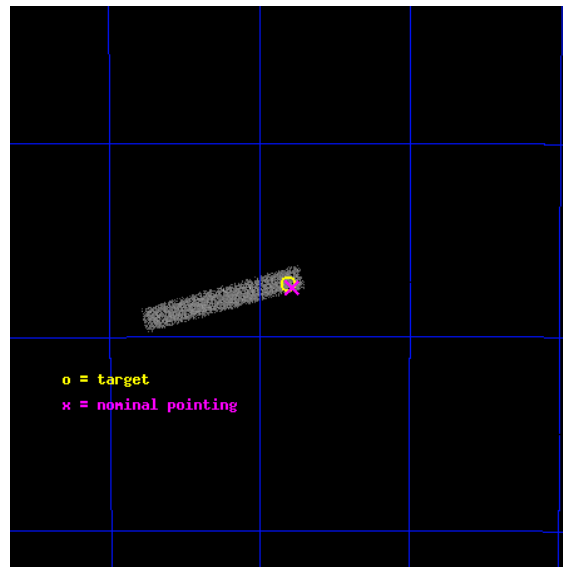
L2 Processing Date : Mar 18 2012

Contents

1	Front	2
2	OBI	3
2.1	OBI	3
2.1.1	Images	3
2.1.2	Bias	3
2.1.3	Parameters	4
2.1.4	Events	4
2.2	Compared Parameters	5
2.3	Aspect	6
2.4	Star Slots	9
2.4.1	Slot 3	9
2.4.2	Slot 4	10
2.4.3	Slot 5	11
2.4.4	Slot 6	12
2.4.5	Slot 7	13
2.5	FID Slots	14
2.5.1	Slot 0	14
2.5.2	Slot 1	15
2.5.3	Slot 2	16
A	Summary	17
A.1	Status	17
A.2	Comments	17

1 Front

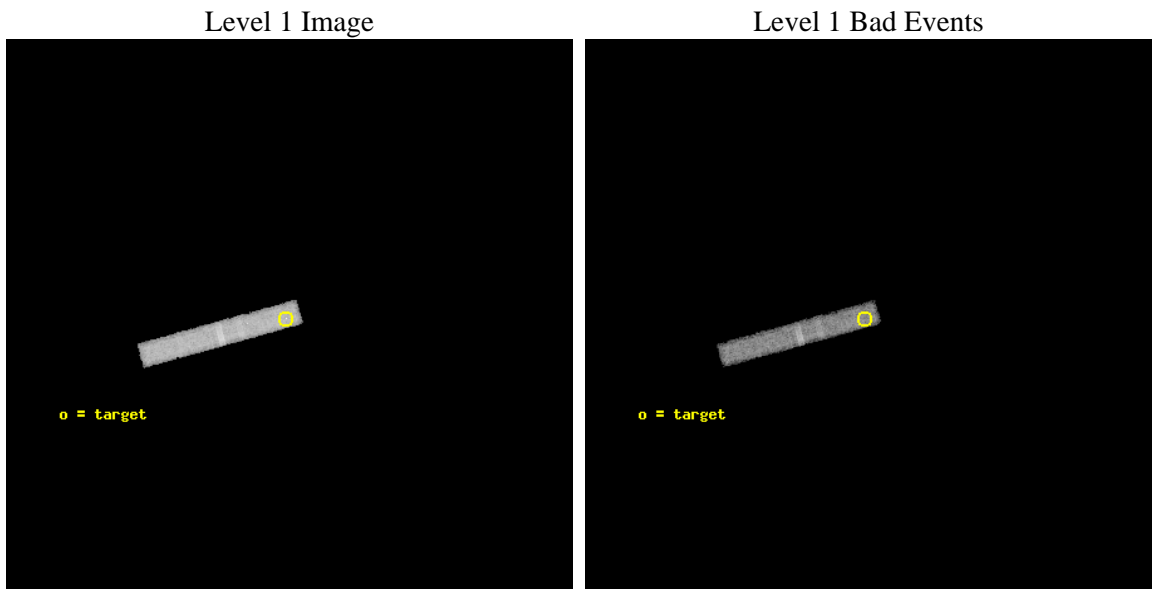
seq_num	200409	Sequence number
obs_id	6435	Observation id
title	Further Resolving the Puzzle of Hybrid Star X-rays	Proposal title
observer	Dr. Thomas Ayres	Principal investigator
object	HD 198700	Source name
dtycycle	0	
cycle	P	events from which exps? Prim/Second/Both
ra_targ	313.7025	Observer's specified target RA [deg]
dec_targ	-58.454167	Observer's specified target Dec [deg]
ra_nom	313.6969940317	Nominal RA [deg]
dec_nom	-58.457819127458	Nominal Dec [deg]
roll_nom	254.748902043	Nominal Roll [deg]
revision	2	Processing version of data
ontime	40141.458979905	Sum of GTIs [s]
livetime	37096.572323585	Livetime [s]
ontime3	40141.458979905	Sum of GTIs [s]
l2events	5581	Number of level 2 events



2 OBI

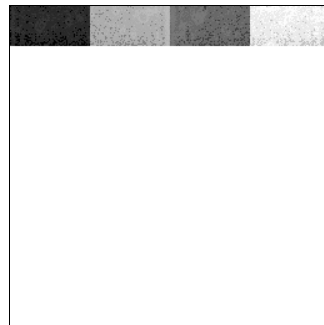
2.1 OBI

2.1.1 Images



2.1.2 Bias

Chip 3



2.1.3 Parameters

obi_num	0	Obi number	sched_exp_time	40000.000000	[s] Scheduled observation exposure time
ascdsver	8.4.3	Processing system revision	ontime	40141.458979905	Sum of GTIs [s]
caldbver	4.4.8	 	ontime3	40141.458979905	Sum of GTIs [s]
date	2012-03-18T11:08:22	Date and time of file creation	l1events	59851	Number of level 1 events
revision	2	Processing version of data			

2.1.4 Events

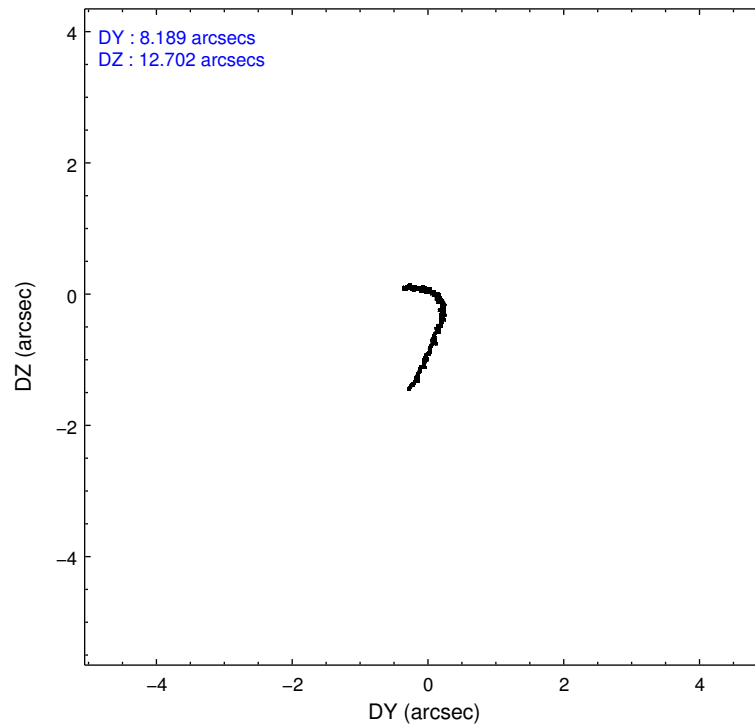
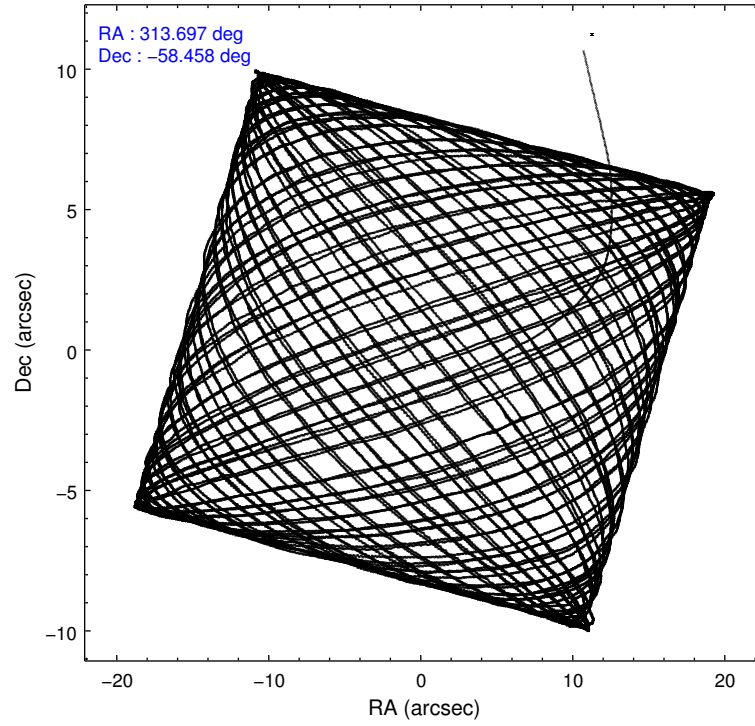
	ccd 3
level 1 events	59851
rejected events	53009
rejected %	88%

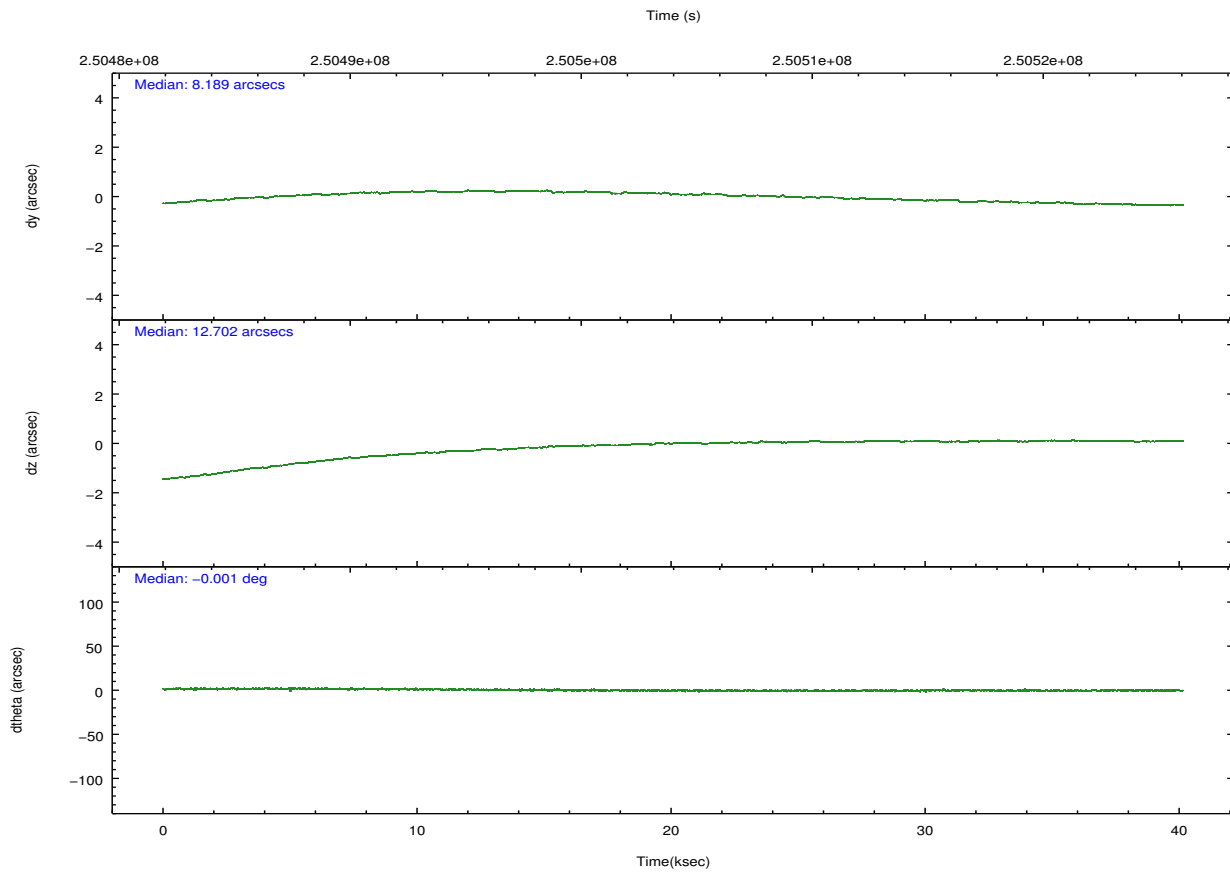
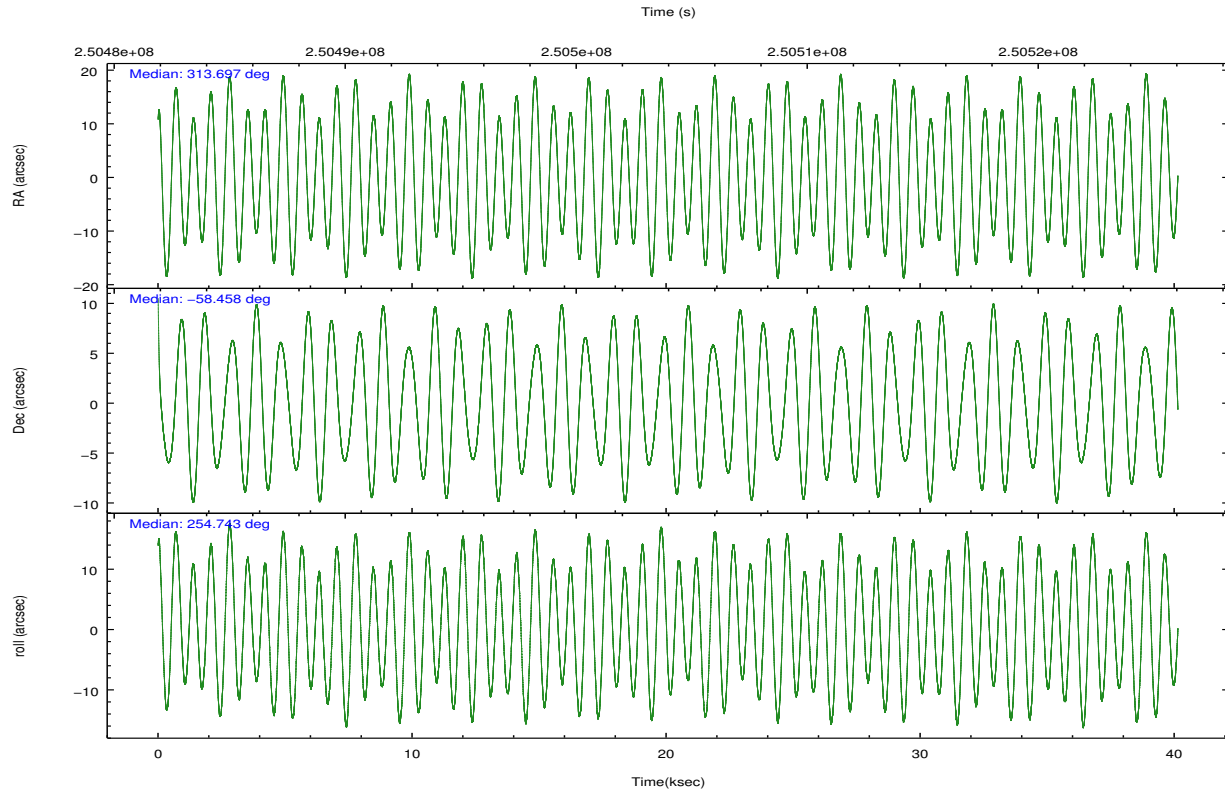
	ccd 3
grade 0 events	2696
	4%
grade 1 events	24
	0%
grade 2 events	904
	1%
grade 3 events	1233
	2%
grade 4 events	1128
	1%
grade 5 events	2012
	3%
grade 6 events	1002
	1%
grade 7 events	50852
	84%

2.2 Compared Parameters

Parameter	Planned	Actual	Parameter	Planned	Actual
Instrument	ACIS	ACIS	Obspar format version number	7	7
Detector	ACIS-3	ACIS-3	Obspar file type	PREDICTED	ACTUAL
Grating	NONE	NONE	Obspar update status	NONE	UPDATED
Data mode	VFAINT	VFAINT	Number of optional ACIS chips dropped	0	0
Observation mode	POINTING	POINTING	On-chip summing requested	N	N
[deg] Pointing RA	313.683492	313.6969940316997	Subarray requested	CUSTOM	1/8
[deg] Pointing Dec	-58.431363	-58.4578191274579	Subarray start row	897	897
[deg] Pointing Roll	254.528713	254.748902043004	Subarray row count	128	128
[mm] SIM focus pos	-0.782348	-0.7809083437167272	Alternating exposures requested	N	N
[mm] SIM defocus	0	0.001439871863259334	[s] Primary exposure time	0.000000	0.5
[mm] SIM translation stage pos	-233.592463	-233.5874344608287			
[mm] SIM translation stage offset	0	-0.005018542100998502			
[s] Observation start time (MET)	250484053.184000	250482839.7119			
Observation start date	2005-12-09T02:53:09	2005-12-09T02:33:59			
[s] Observation end time (MET)	250524053.184000	250525029.73886			
Observation end date	2005-12-09T13:59:49	2005-12-09T14:17:09			
Read mode	TIMED	TIMED			

2.3 Aspect



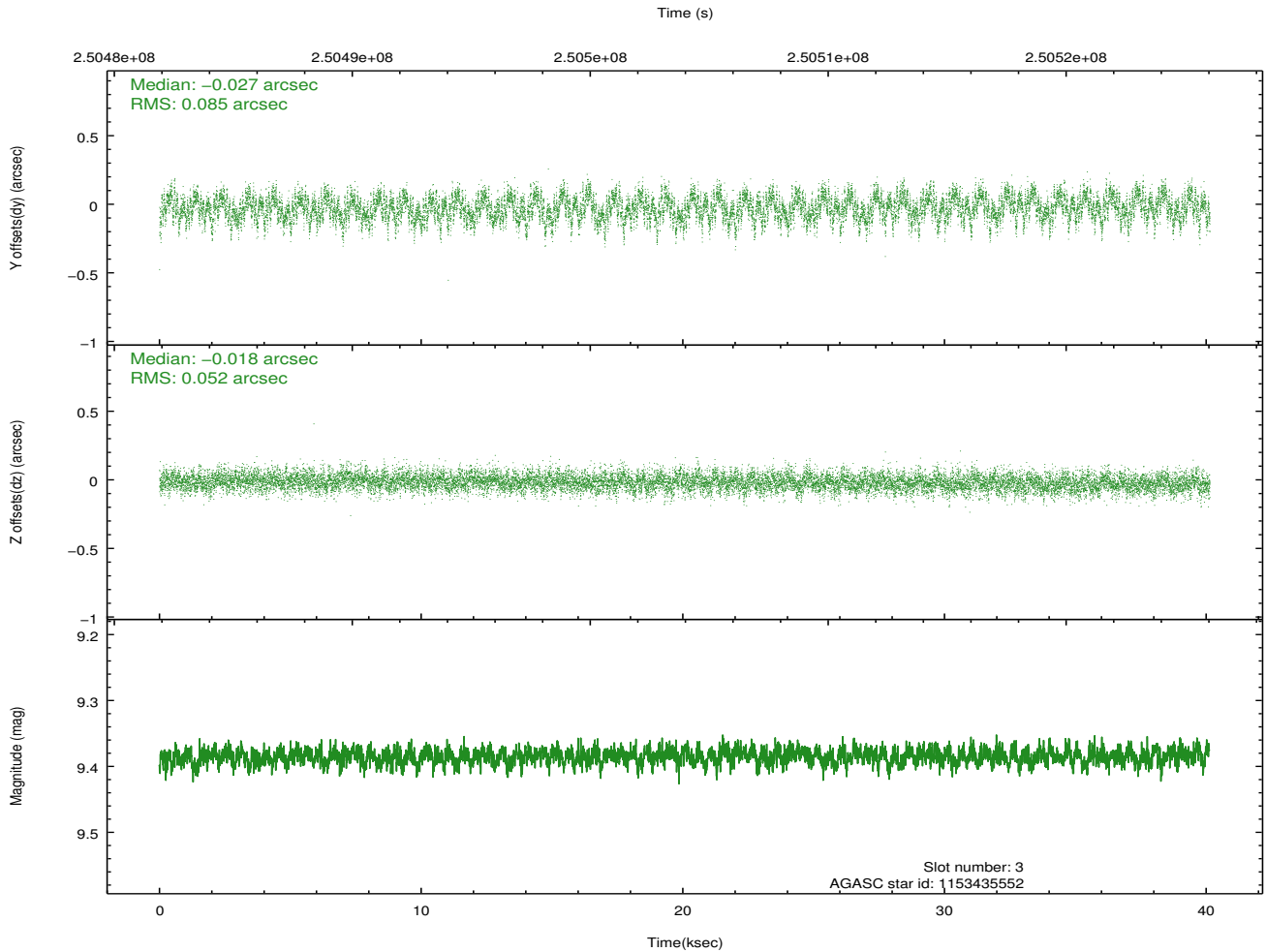
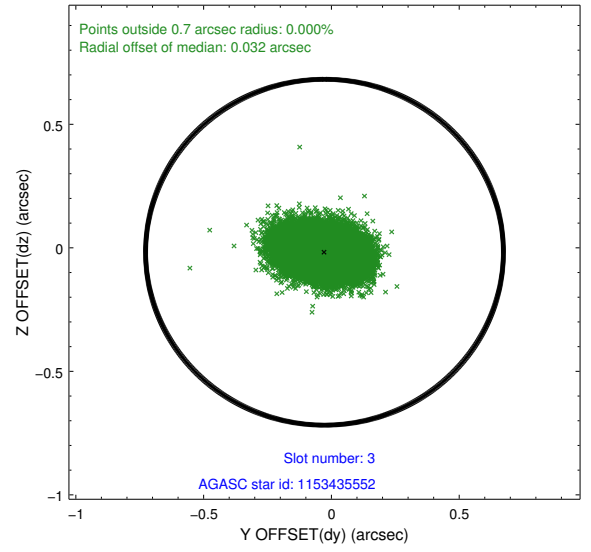
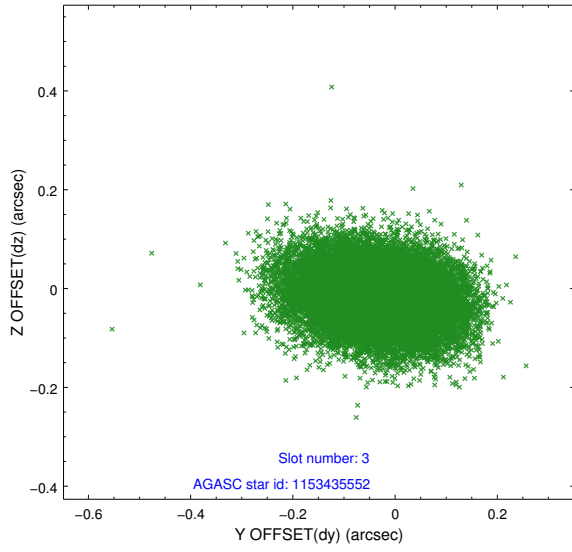


Slot Statistics

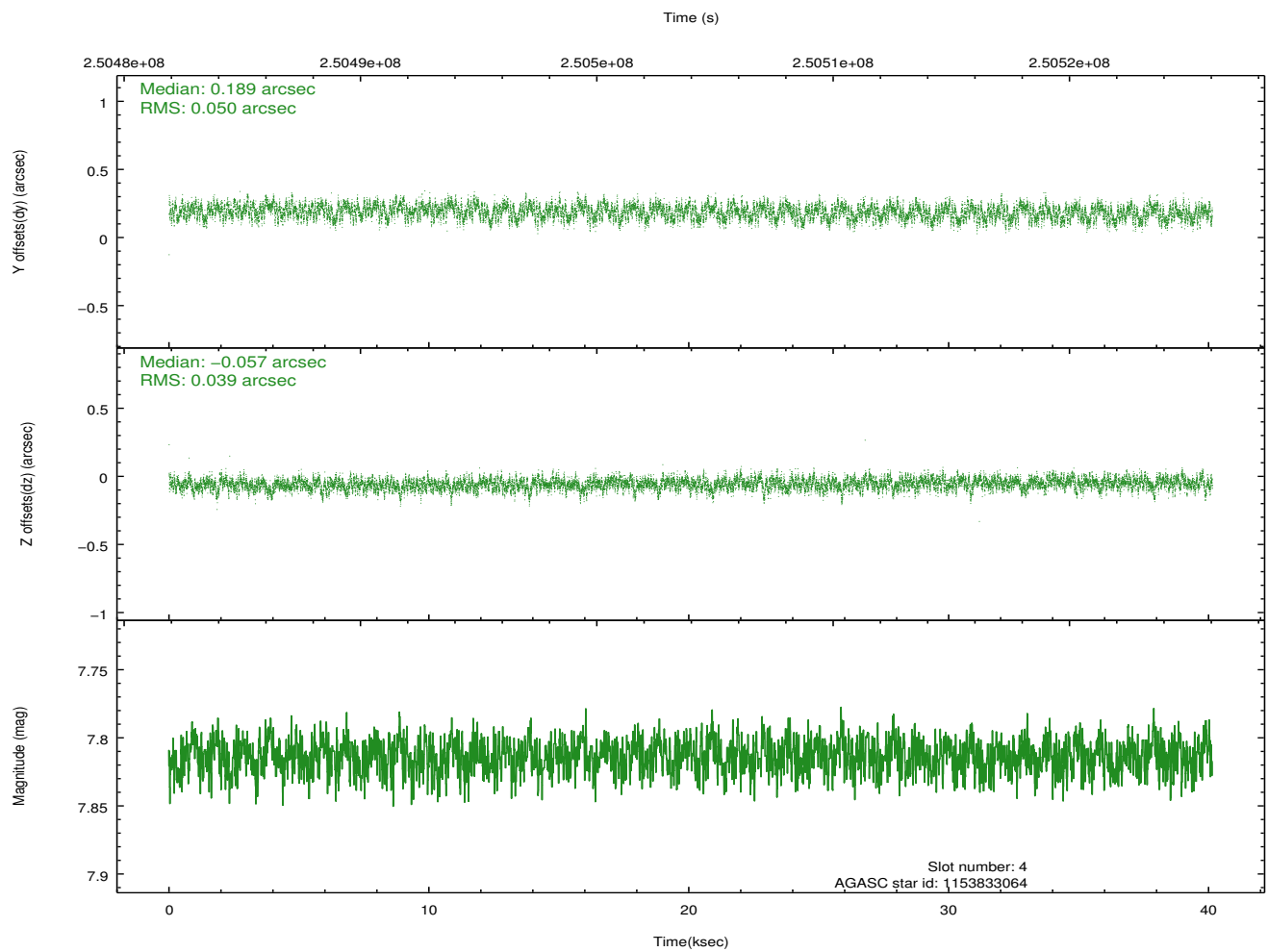
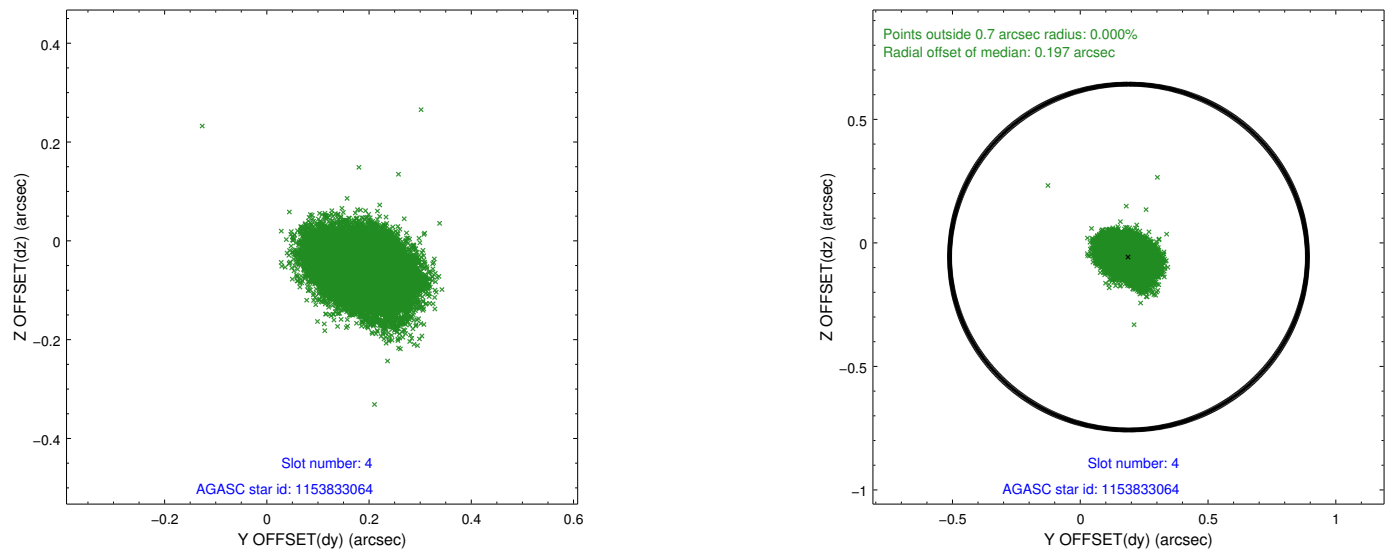
slot	status	id	mag	n_pts	med_dy	med_dz	dr1	dr2	ra	dec	mean_y	mean_z
0	FID	ACIS-I-1	7.24	9789	0.052	-0.002	0.022	0.037	0.000000	0.000000	931.52	-836.04
1	FID	ACIS-I-5	7.23	9791	-0.188	0.066	0.015	0.025	0.000000	0.000000	-1816.79	1061.56
2	FID	ACIS-I-6	7.25	9790	0.044	0.007	0.014	0.036	0.000000	0.000000	397.08	1705.99
3	GUIDE	1153435552	9.39	19569	-0.027	-0.018	0.106	0.174	314.932500	-58.042484	-1962.75	1926.18
4	GUIDE	1153833064	7.81	19580	0.189	-0.057	0.068	0.109	312.639725	-58.923626	2240.32	-1392.05
5	GUIDE	1153963976	8.44	19577	0.017	0.057	0.069	0.111	314.549768	-58.505165	-167.67	1643.92
6	GUIDE	1153964424	6.88	19582	-0.109	-0.116	0.051	0.079	314.014508	-58.358524	-417.93	533.13
7	GUIDE	1153439192	8.26	19577	-0.067	0.133	0.056	0.090	313.849459	-57.867725	-2039.69	-234.55

2.4 Star Slots

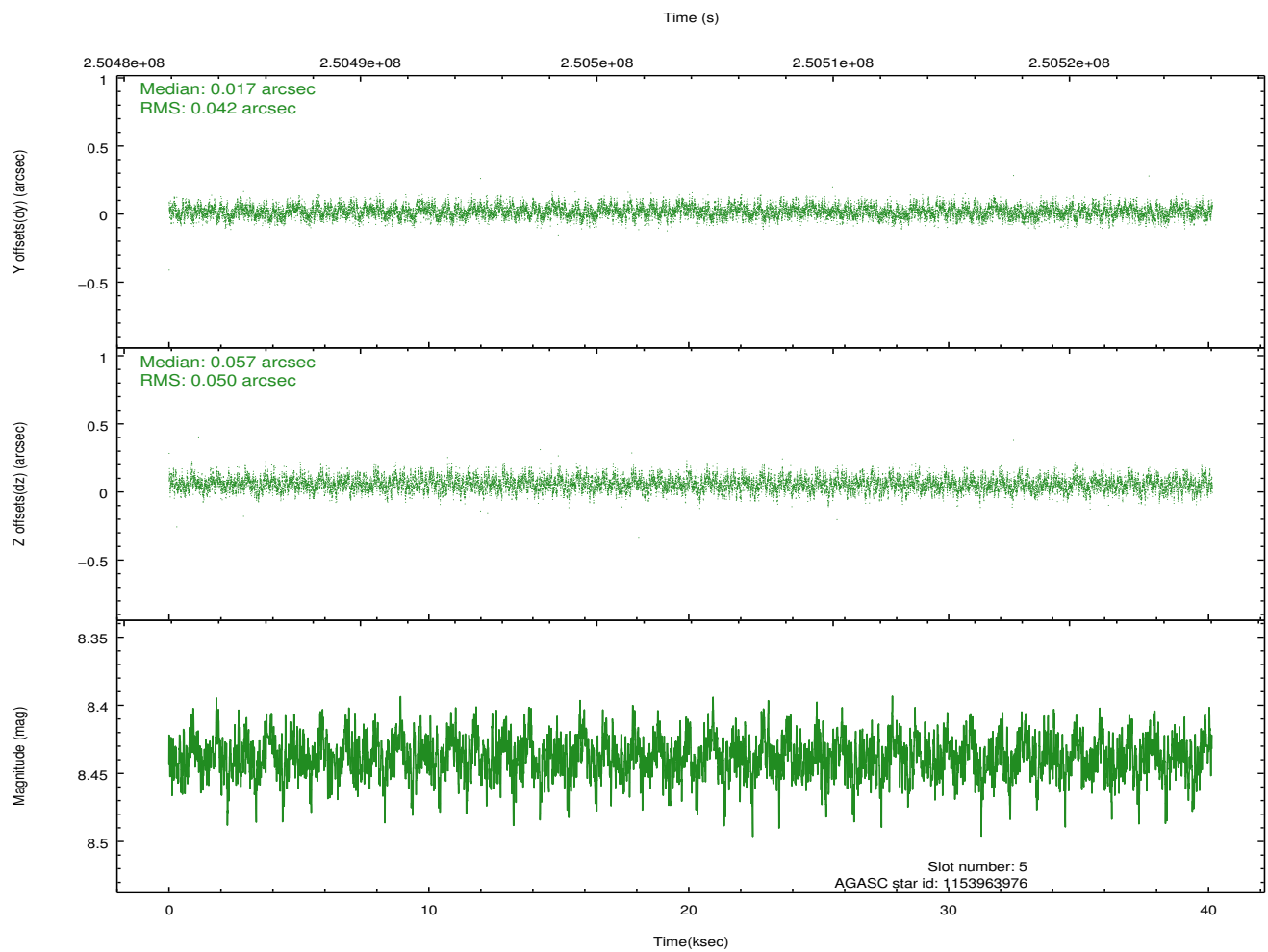
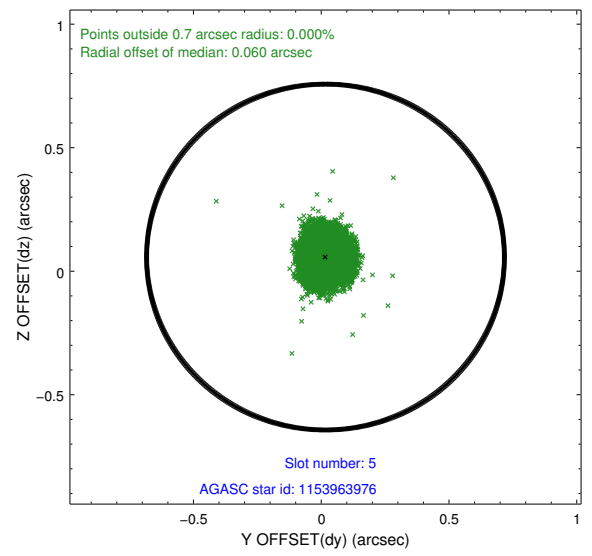
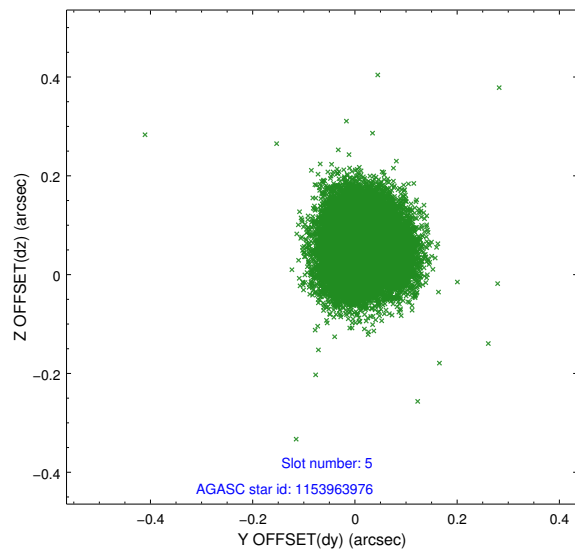
2.4.1 Slot 3



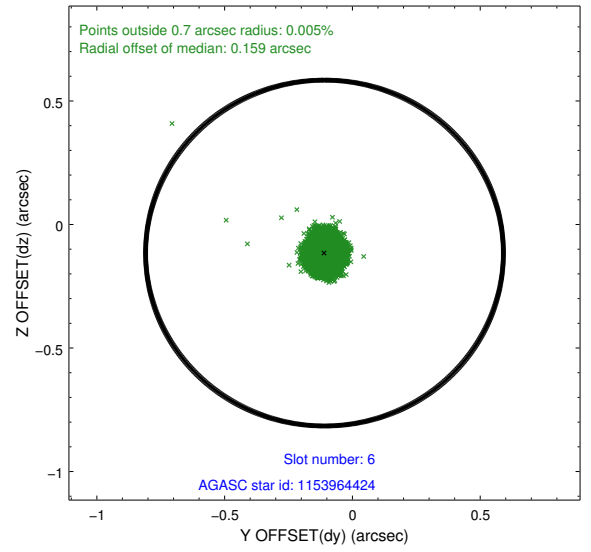
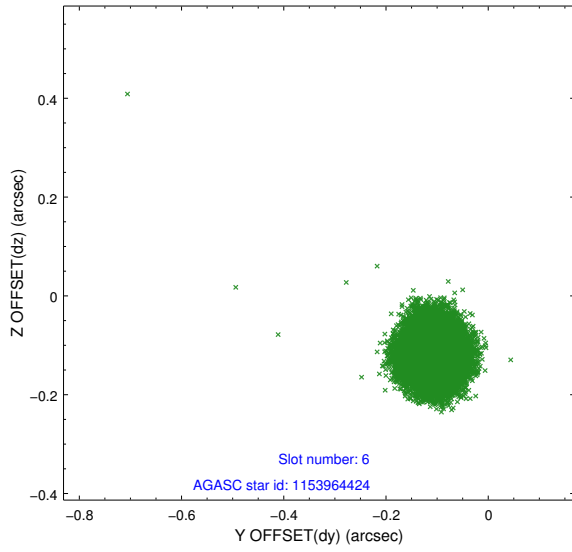
2.4.2 Slot 4



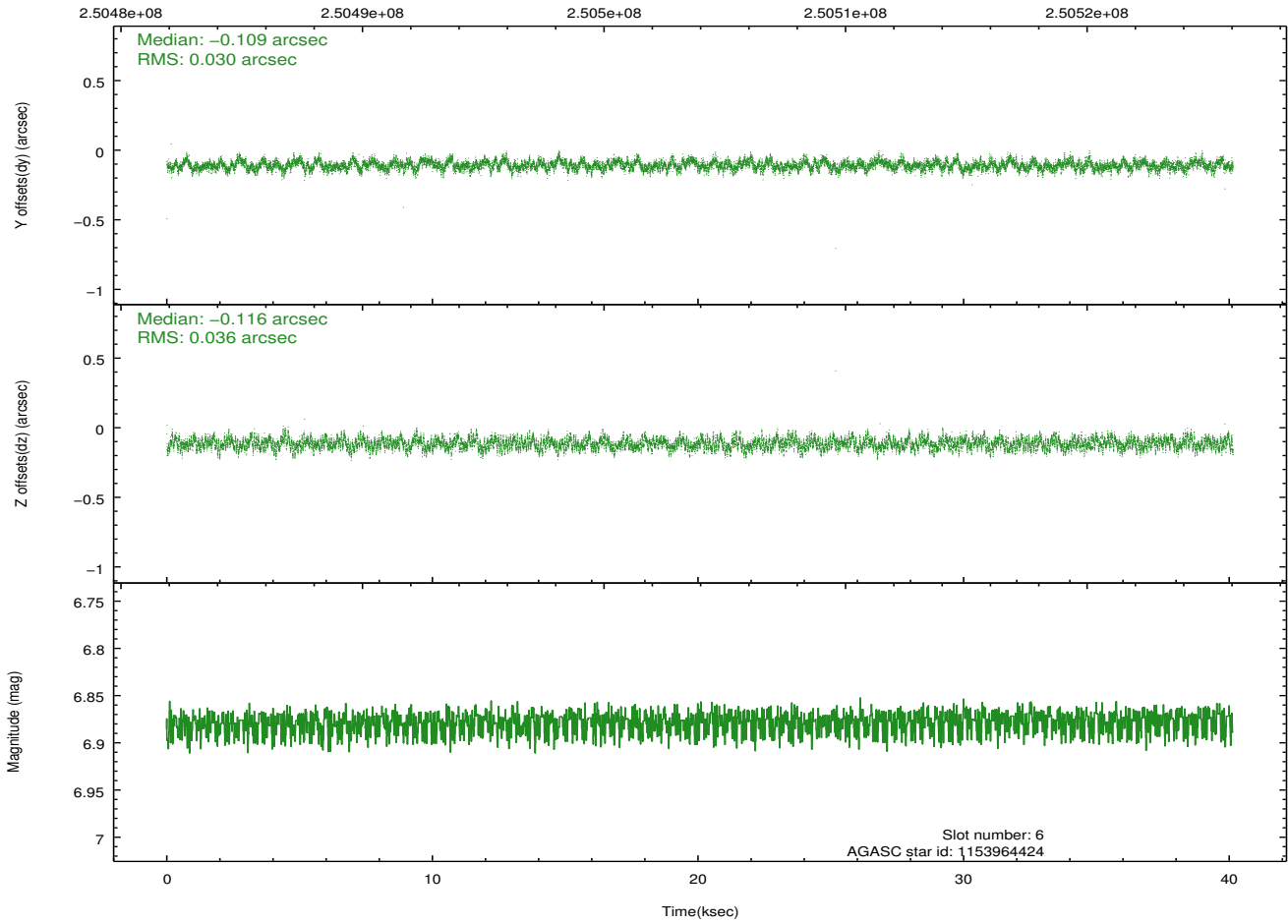
2.4.3 Slot 5



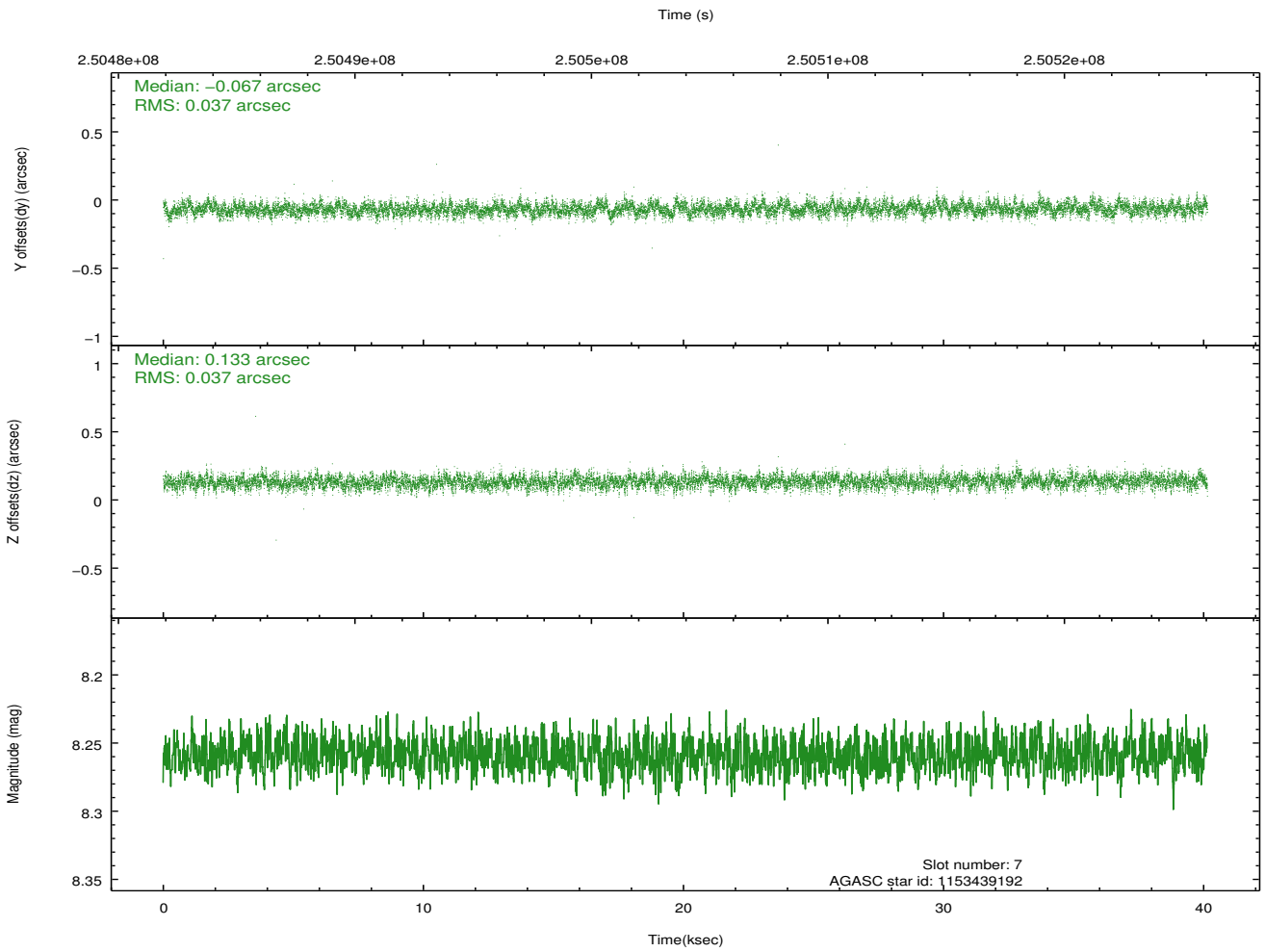
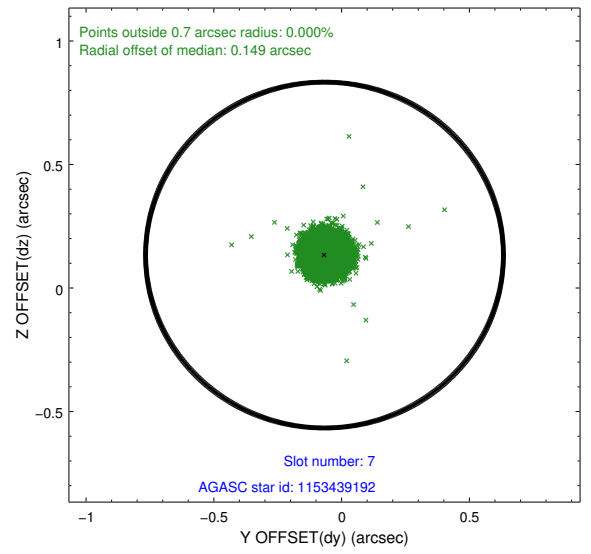
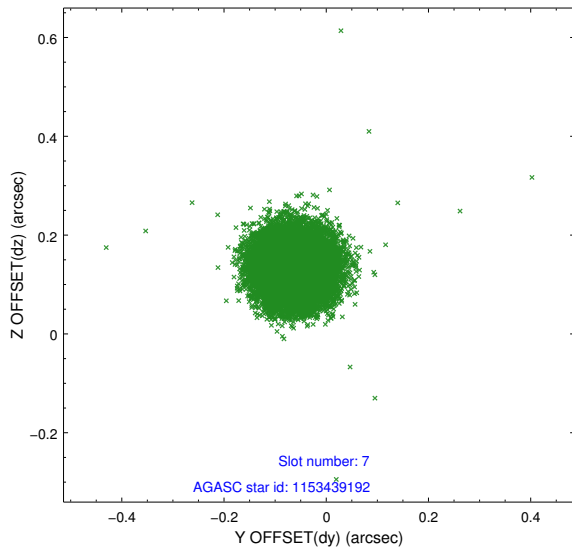
2.4.4 Slot 6



Time (s)

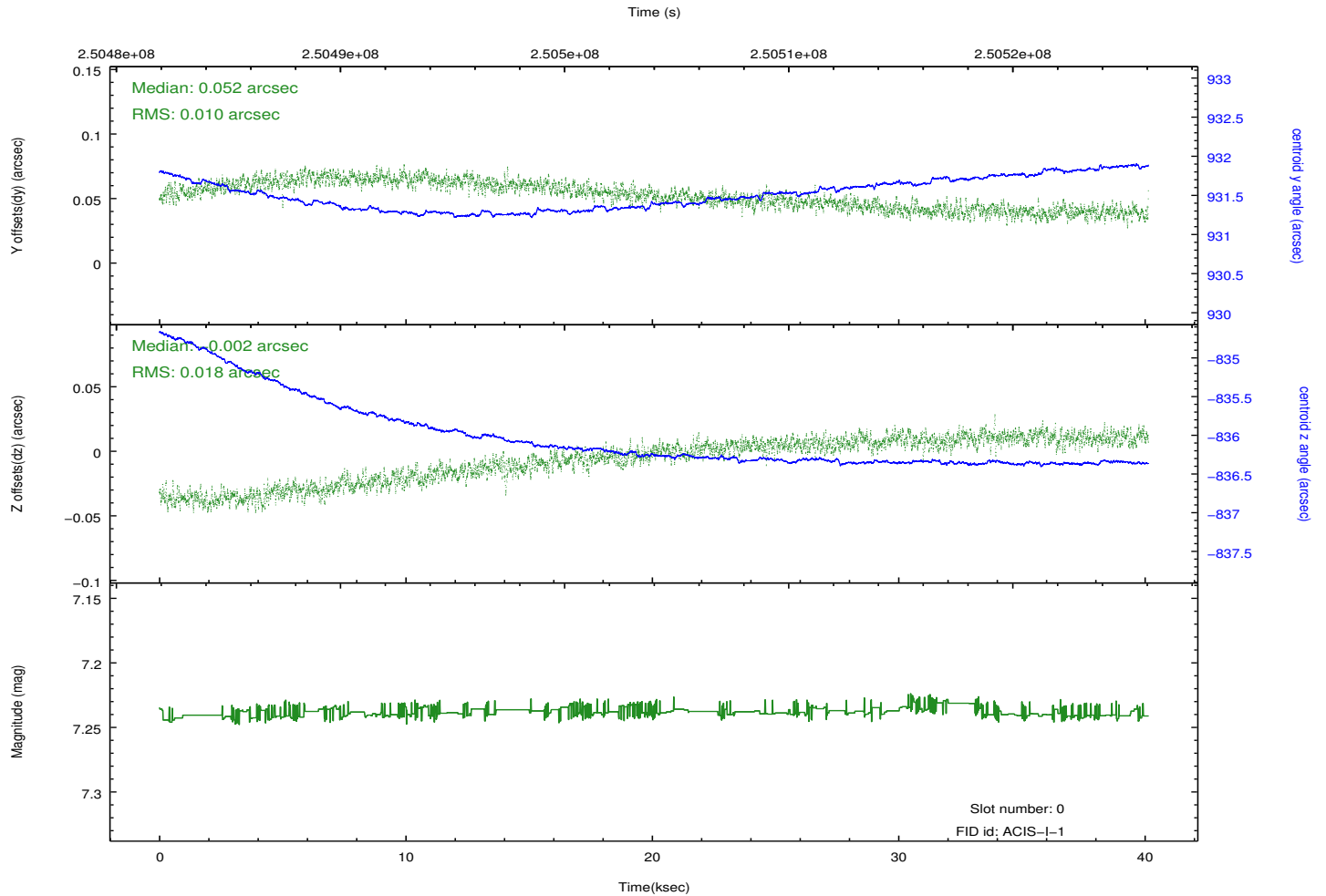
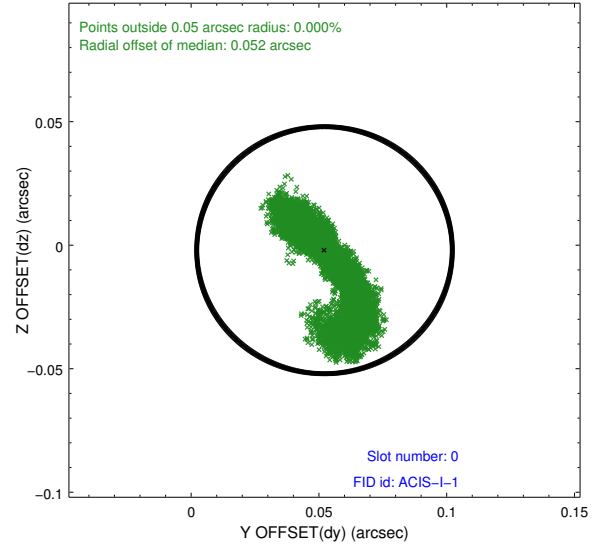
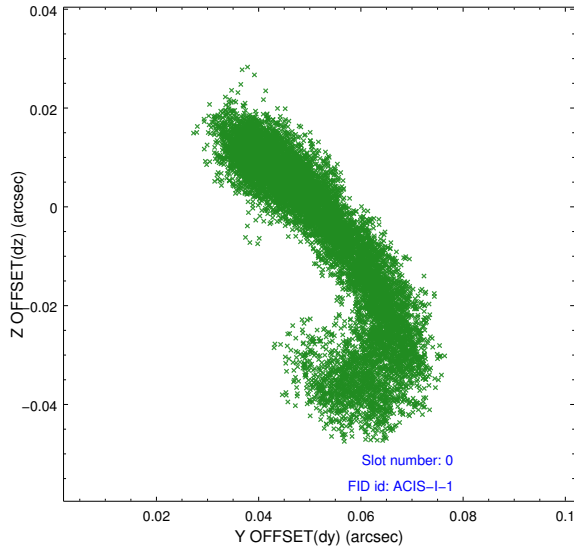


2.4.5 Slot 7

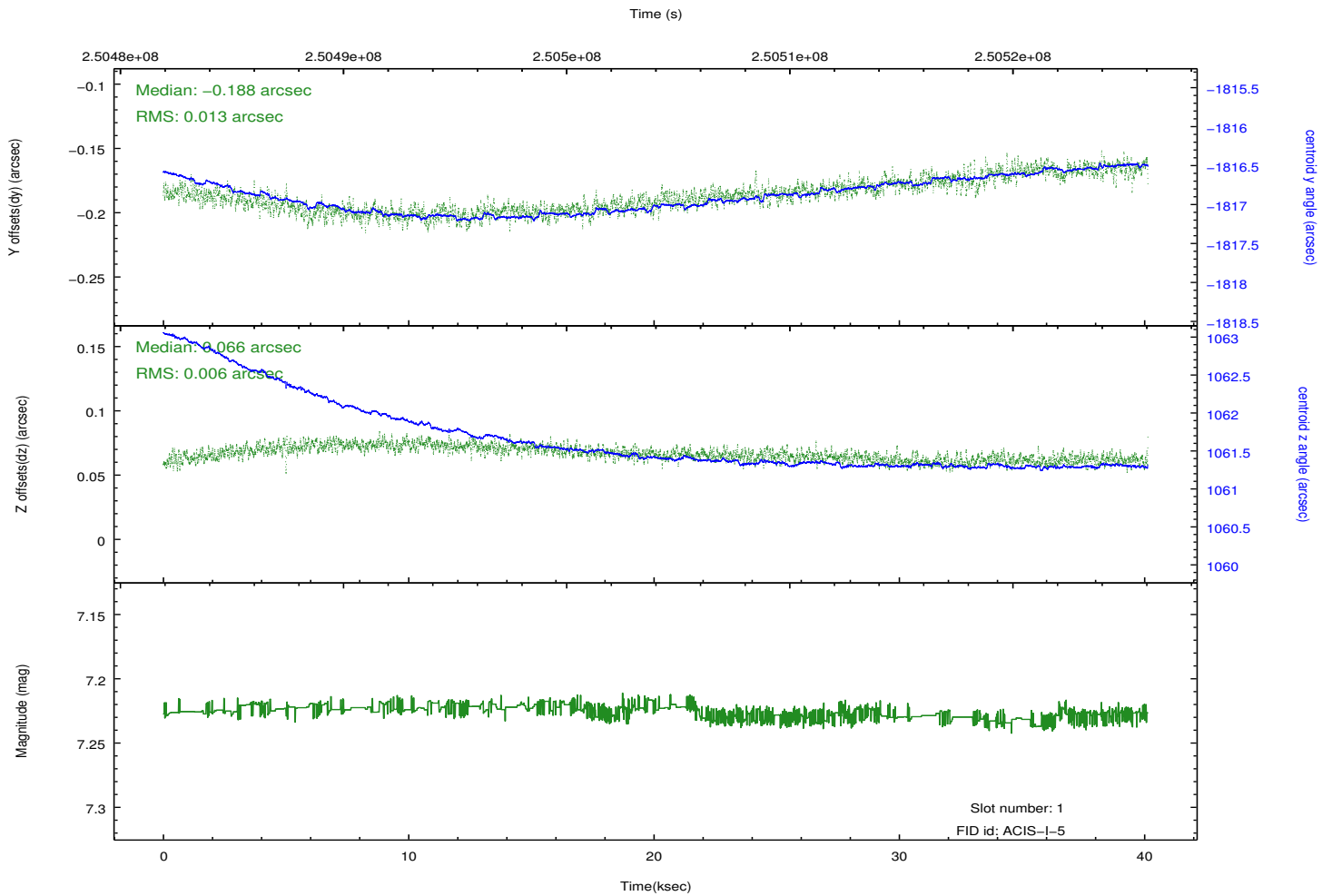
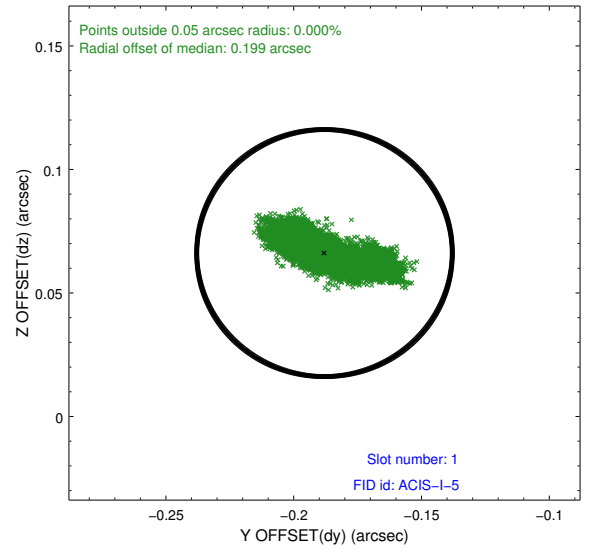
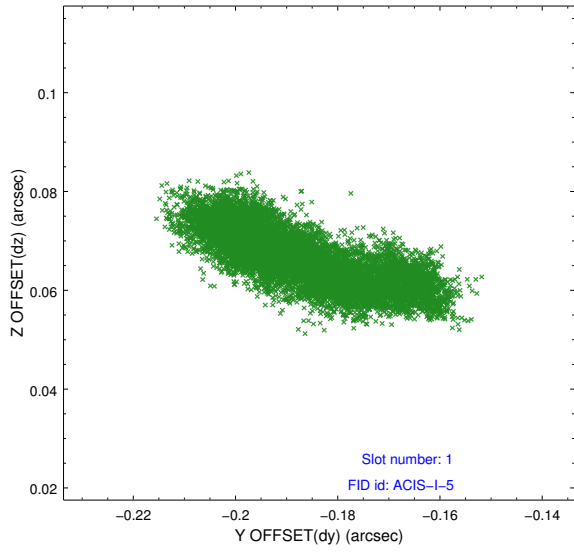


2.5 FID Slots

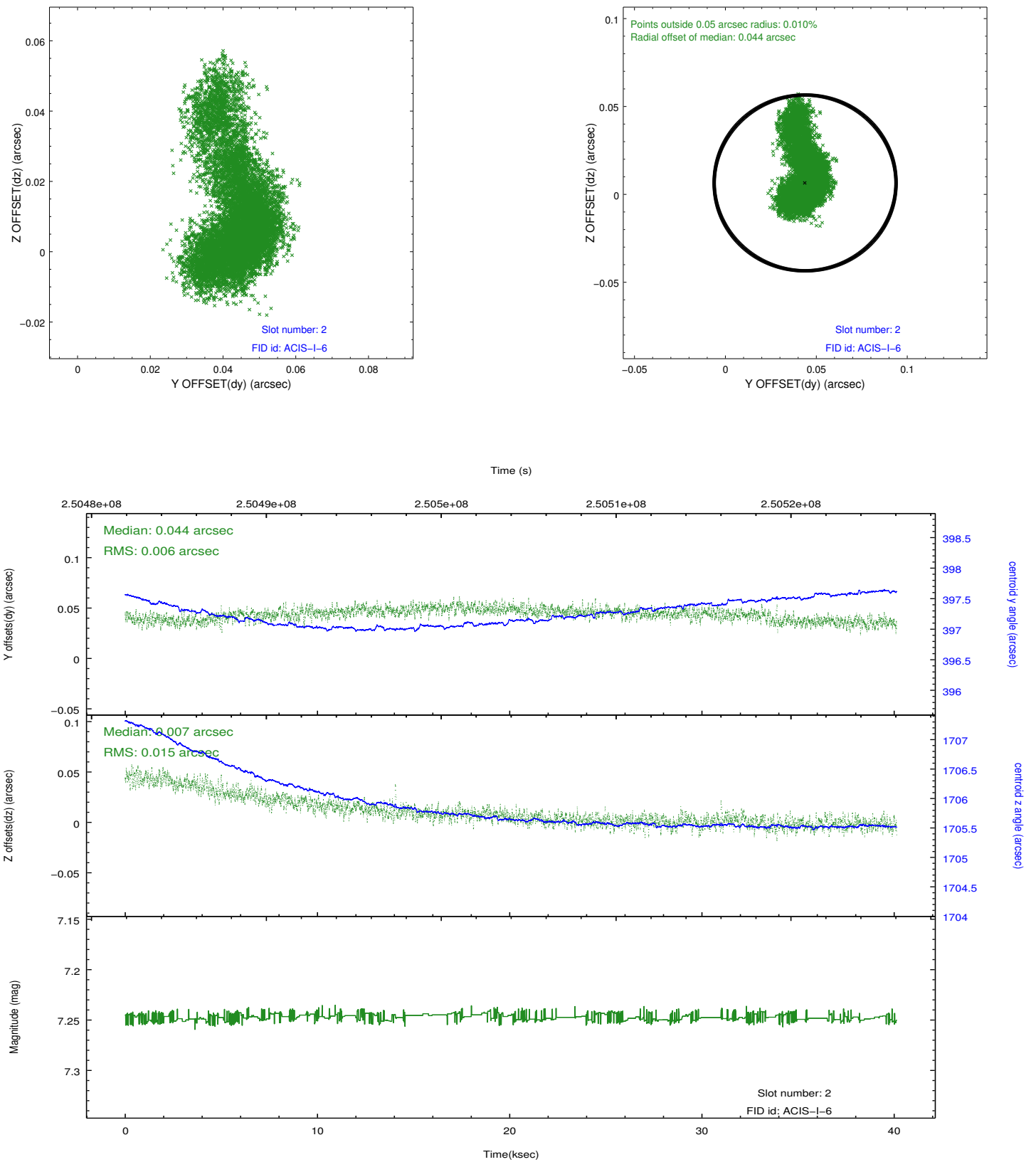
2.5.1 Slot 0



2.5.2 Slot 1



2.5.3 Slot 2



A Summary

A.1 Status

V&V Scientist	Jen Lauer
V&V Date (YYYY-MM-DD)	2012.03.20
V&V Edition	1
V&V Disposition and Status	OK
V&V Charge Time	40.14145

A.2 Comments