

V&V Reference Report

L2 ASCDS Version : 8.4.5

Observation 645 - L2 Version 6
Chandra X-Ray Center

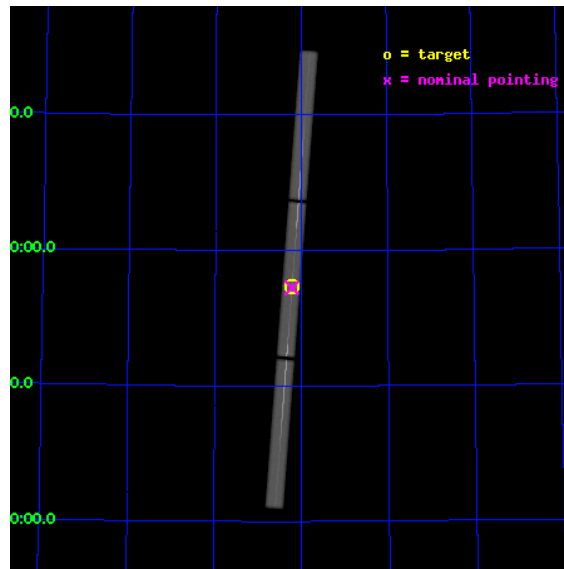
L2 Processing Date : Sep 5 2012

Contents

1	Front	2
2	OBI	3
2.1	OBI	3
2.1.1	Images	3
2.1.2	Parameters	4
2.1.3	Events	4
2.2	Compared Parameters	5
2.3	Aspect	6
2.4	Star Slots	9
2.4.1	Slot 3	9
2.4.2	Slot 4	10
2.4.3	Slot 5	11
2.4.4	Slot 6	12
2.5	FID Slots	13
2.5.1	Slot 0	13
2.5.2	Slot 1	14
2.5.3	Slot 2	15
3	Gratings	16
3.1	LETG Arm	16
A	Summary	18
A.1	Status	18
A.2	Comments	18

1 Front

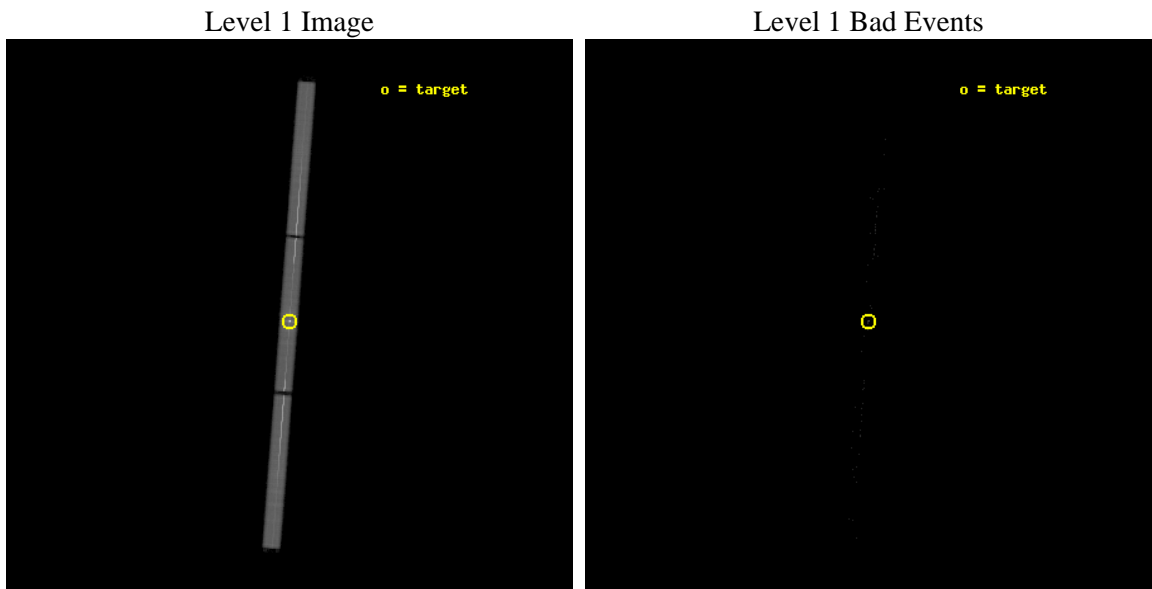
seq_num	300014	Sequence number
obs_id	645	Observation id
title	THE TEMPERATURE STRUCTURE IN THE ACCRETION REGION OF AM HERCULIS	P
observer	DR. KLAUS REINSCH	Principal investigator
object	AM HER	Source name
ra_targ	274.055417	Observer's specified target RA [deg]
dec_targ	49.8675	Observer's specified target Dec [deg]
ra_nom	274.05571745787	Nominal RA [deg]
dec_nom	49.862580525146	Nominal Dec [deg]
roll_nom	274.33754669316	Nominal Roll [deg]
revision	6	Processing version of data
ontime	24117.48215951	[s]
livetime	23967.949830723	Ontime multiplied by DTCOR
l2events	1293292	Number of level 2 events



2 OBI

2.1 OBI

2.1.1 Images



2.1.2 Parameters

obi_num	1	Obi number	sched_exp_time	24000.000000	[s] Scheduled observation exposure time
ascdsver	8.4.5	Processing system revision	ontime	24117.48215951	[s]
caldbver	4.5.1.1	 	l1events	1781956	Number of level 1 events
date	2012-09-05T15:04:56	Date and time of file creation			
revision	5	Processing version of data			

2.1.3 Events

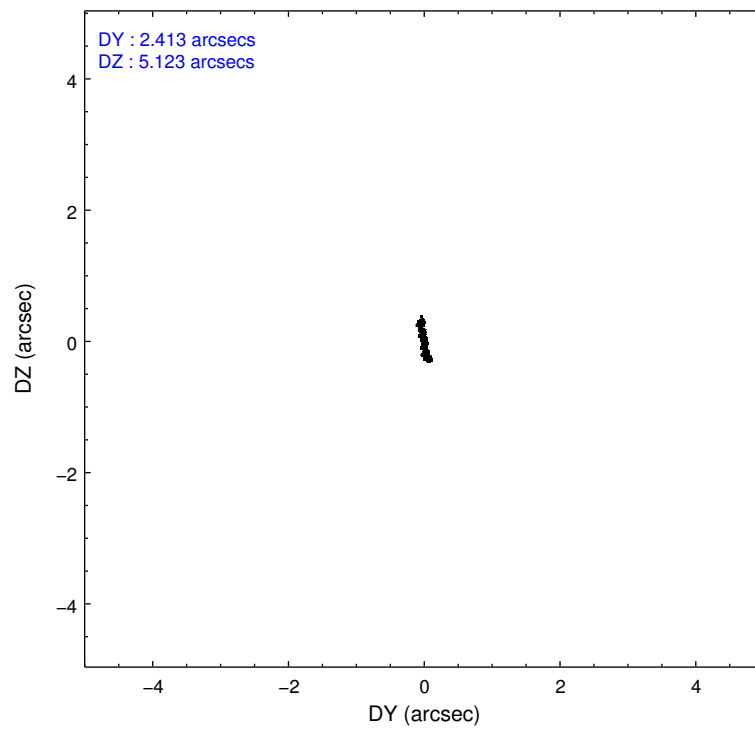
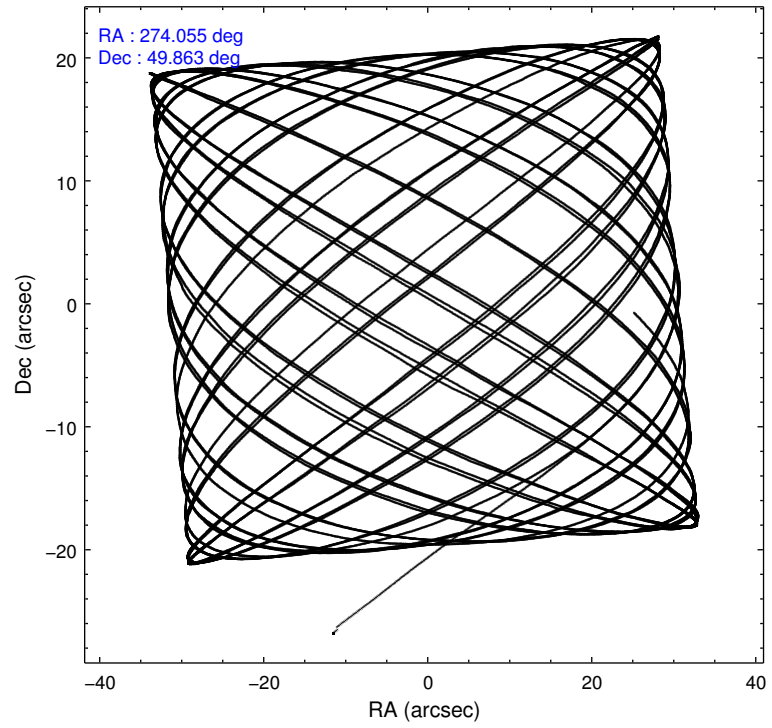
Level 1 Events

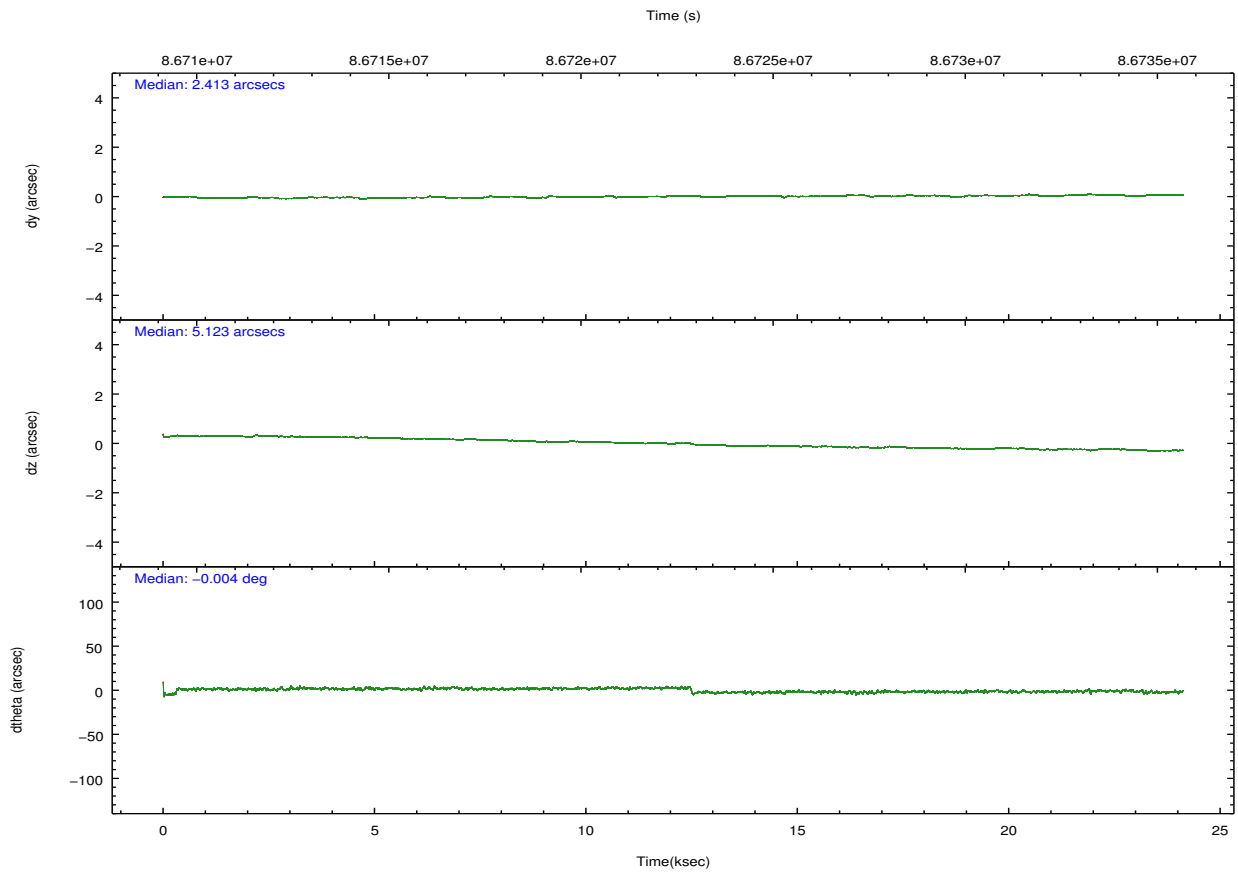
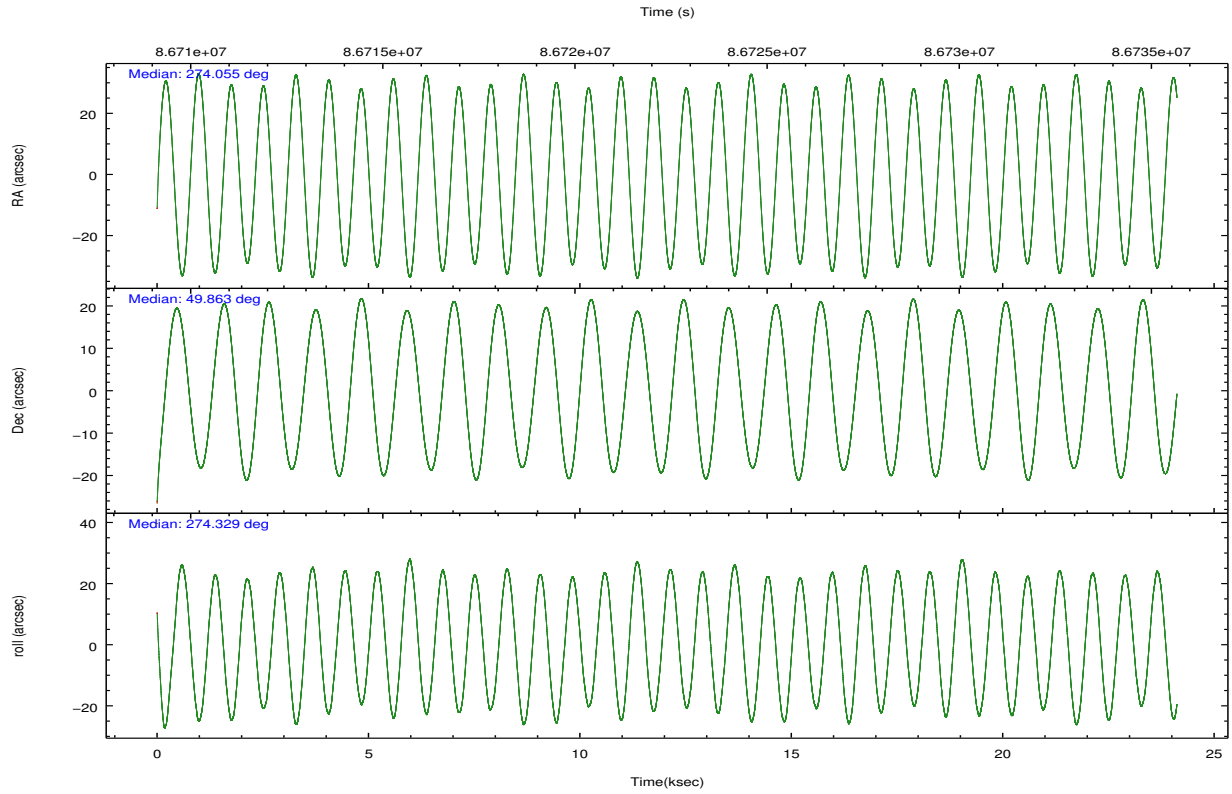
	segment 1	segment 2	segment 3
level 1 events	552930	652628	576398
rejected events	22344	22403	22327
rejected %	4%	3%	3%

2.2 Compared Parameters

Parameter	Planned	Actual	Parameter	Planned	Actual
Instrument	HRC	HRC	Obspar format version number	7	7
Detector	HRC-S	HRC-S	Obspar file type	PREDICTED	ACTUAL
Grating	LETG	LETG	Obspar update status	NONE	UPDATED
Data mode	OBSERVING	OBSERVING			
Observation mode	POINTING	POINTING			
[deg] Pointing RA	274.028932	274.0557174578663			
[deg] Pointing Dec	49.885610	49.86258052514583			
[deg] Pointing Roll	274.290689	274.3375466931615			
[s] Window start time (MET)	70693264.184000	70693264.184000			
[s] Window stop time (MET)	86853664.184000	86853664.184000			
[mm] SIM focus pos	-1.429586	-1.428180813131781			
[mm] SIM defocus	0.1037507710433287	0.1051558262725154			
[mm] SIM translation stage pos	250.455976	250.466033080201			
[mm] SIM translation stage offset	0	-0.01005468664627074			
[s] Observation start time (MET)	86710458.184000	86709224.535199			
Observation start date	2000-09-30T14:13:14	2000-09-30T13:53:44			
[s] Observation end time (MET)	86734458.184000	86735122.69867601			
Observation end date	2000-09-30T20:53:14	2000-09-30T21:05:22			

2.3 Aspect



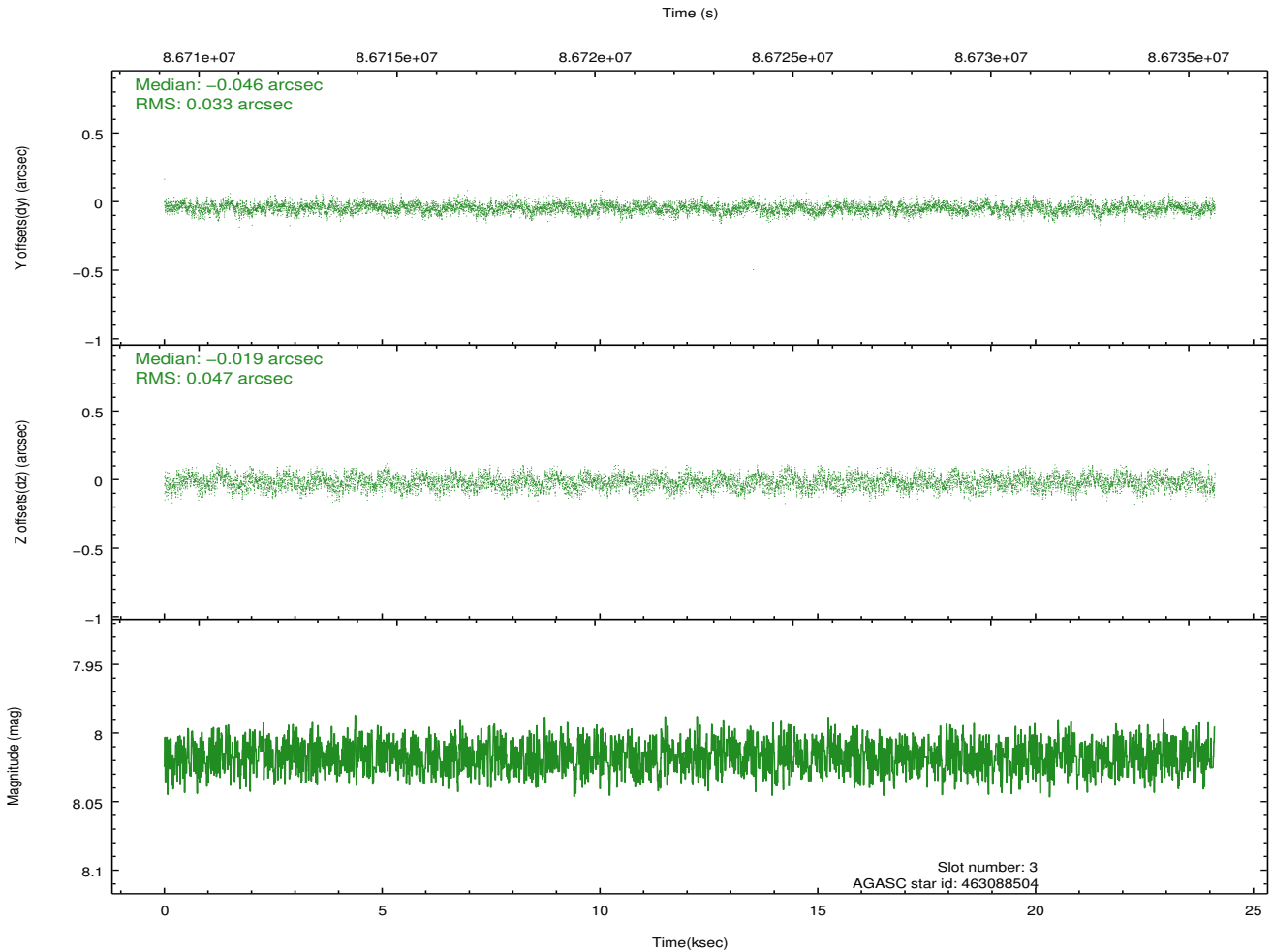
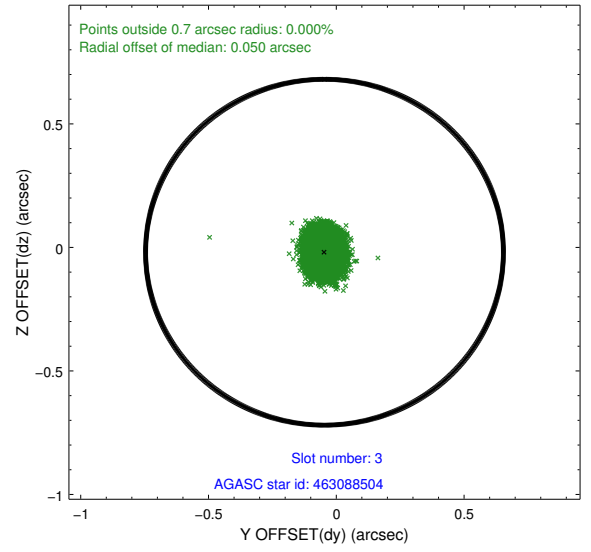
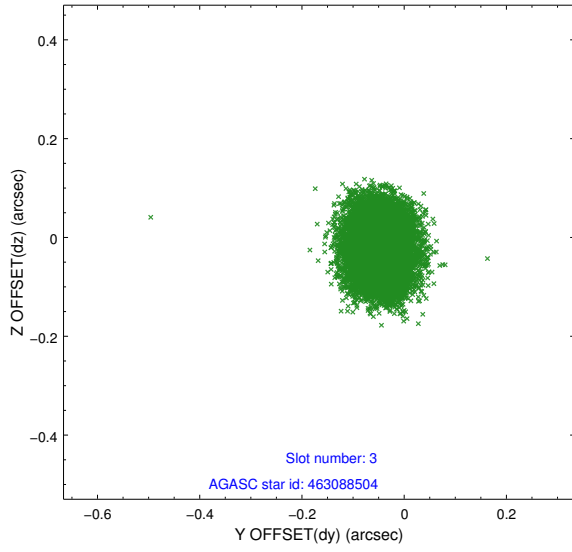


Slot Statistics

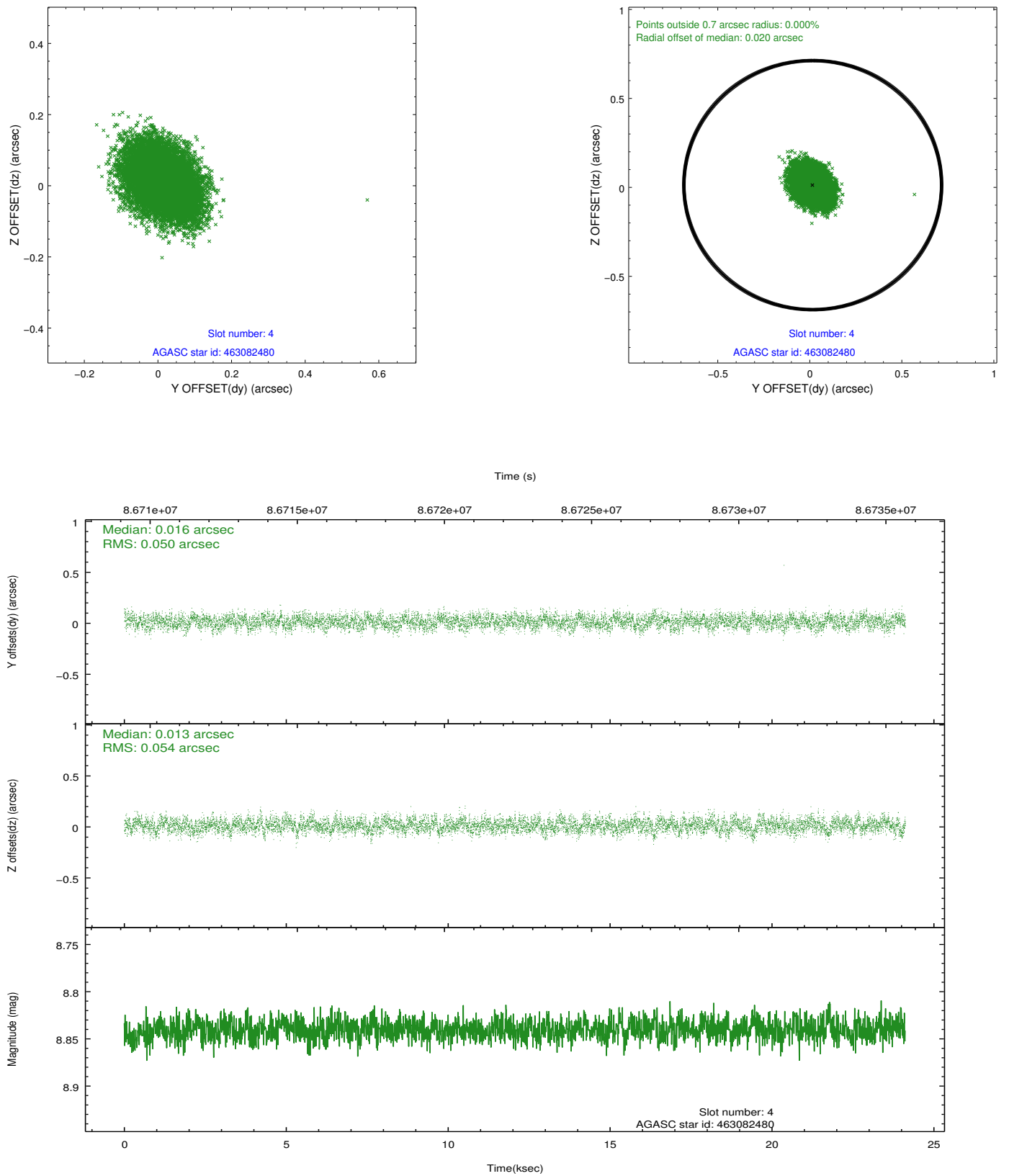
	status	id	mag	n_pts	med_dy	med_dz	dr1
	FID	HRC-S-1	6.99	5883	0.121	-0.158	0.009
	FID	HRC-S-3	7.01	5883	0.146	-0.042	0.008
	FID	HRC-S-4	6.95	5883	0.121	-0.096	0.006
	GUIDE	463088504	8.02	11766	-0.046	-0.019	0.062
	GUIDE	463082480	8.84	11763	0.016	0.013	0.078
	GUIDE	463084696	9.04	11765	0.051	-0.008	0.079
	GUIDE	463087168	9.41	11763	-0.021	0.016	0.108
0.000	0.000	0.000	0.000000	0.000000	0.00	0.00	

2.4 Star Slots

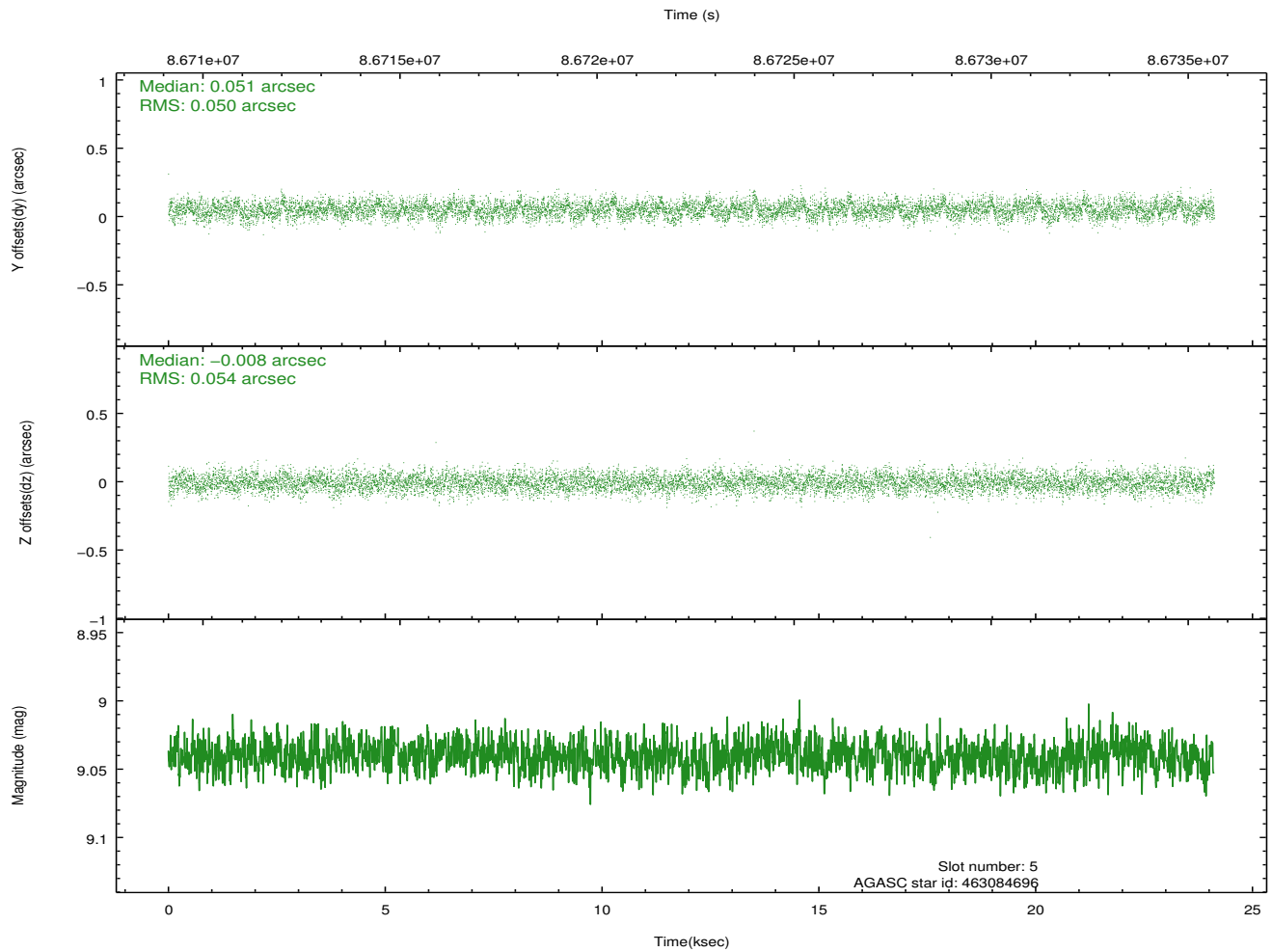
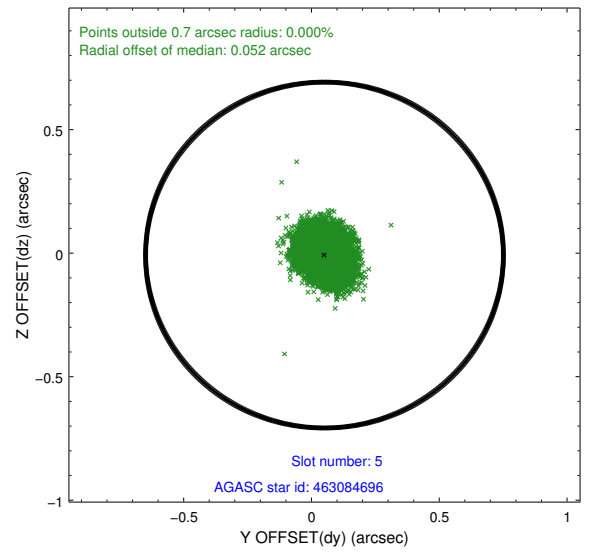
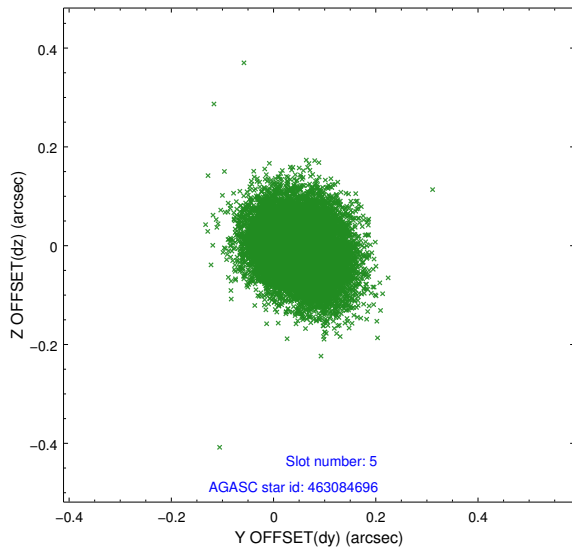
2.4.1 Slot 3



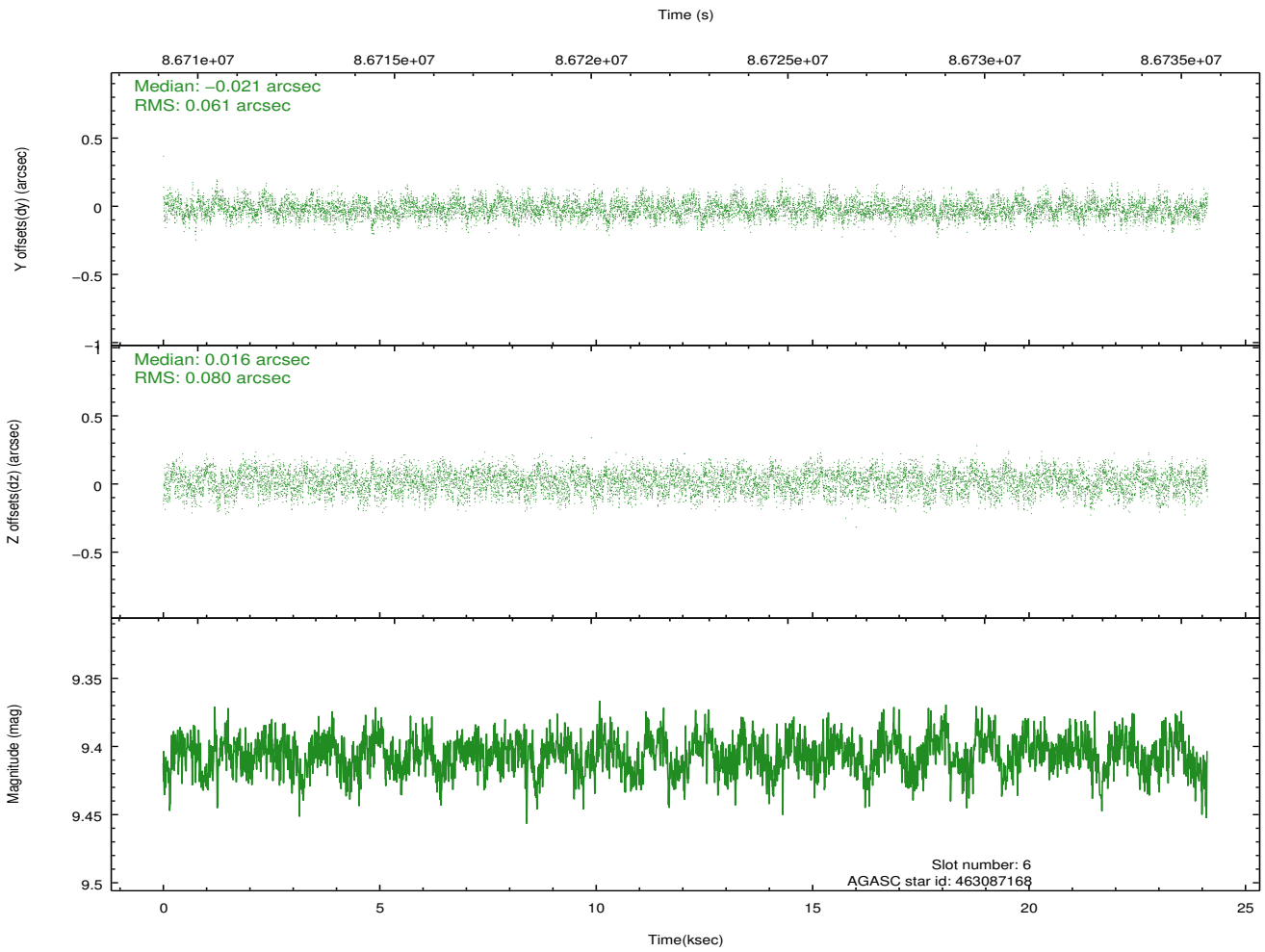
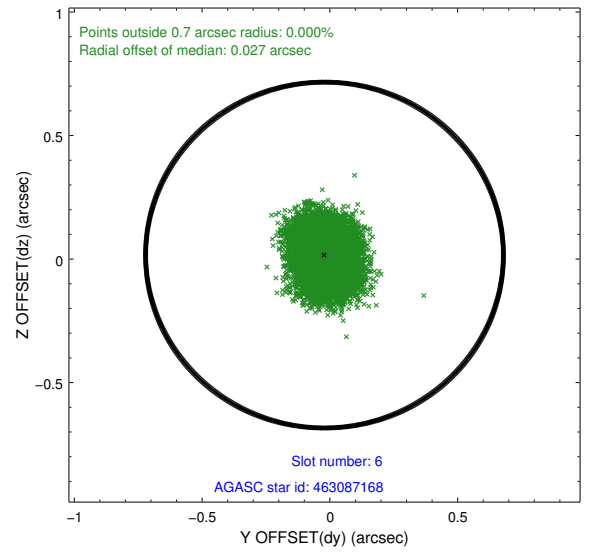
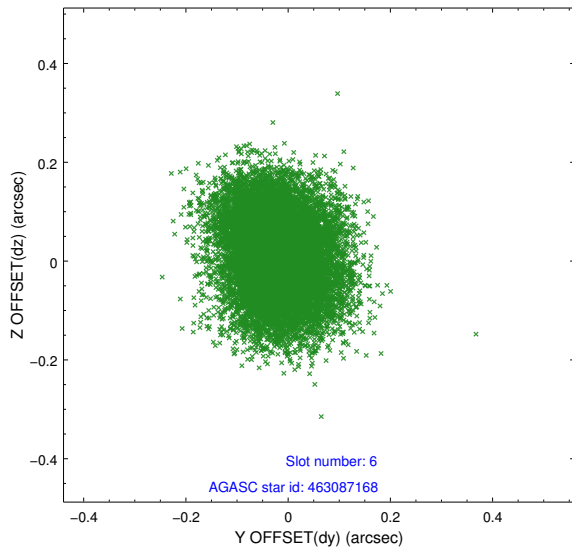
2.4.2 Slot 4



2.4.3 Slot 5

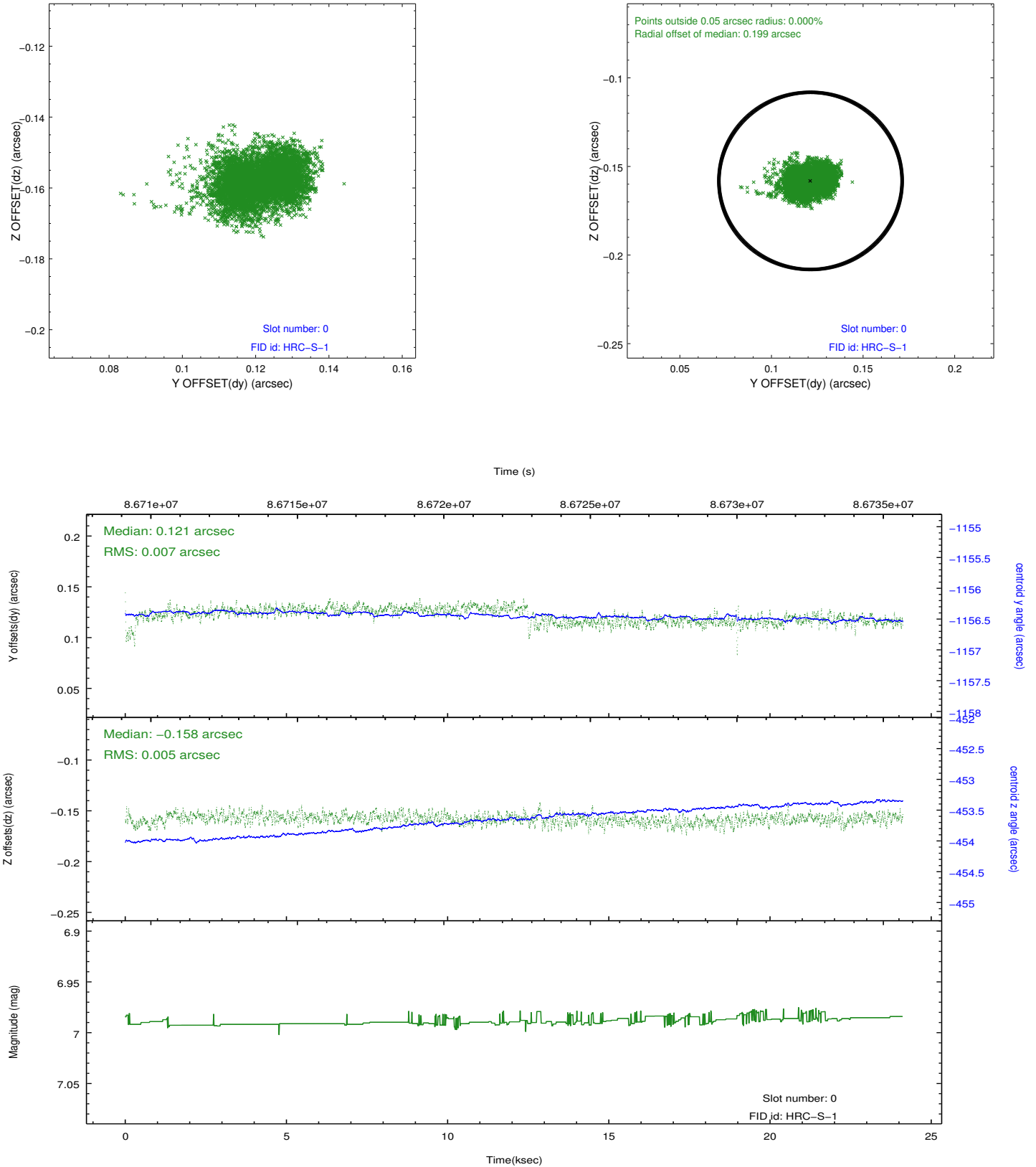


2.4.4 Slot 6

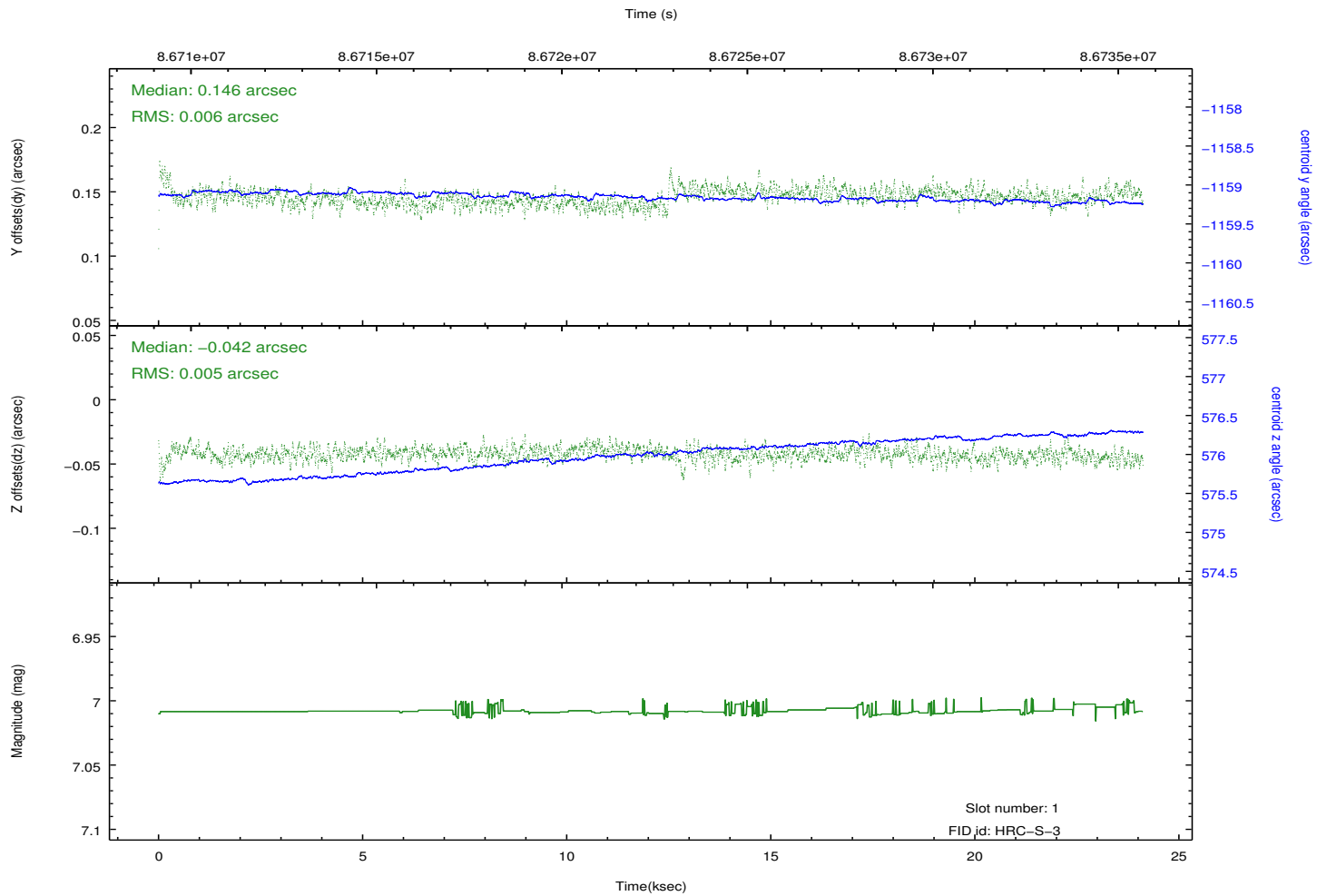
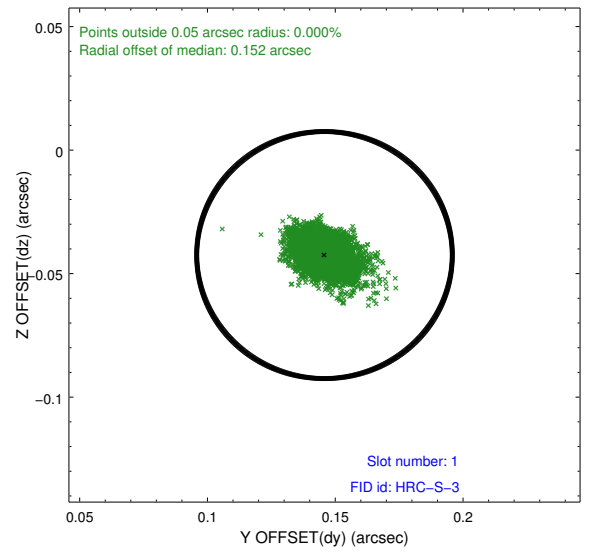
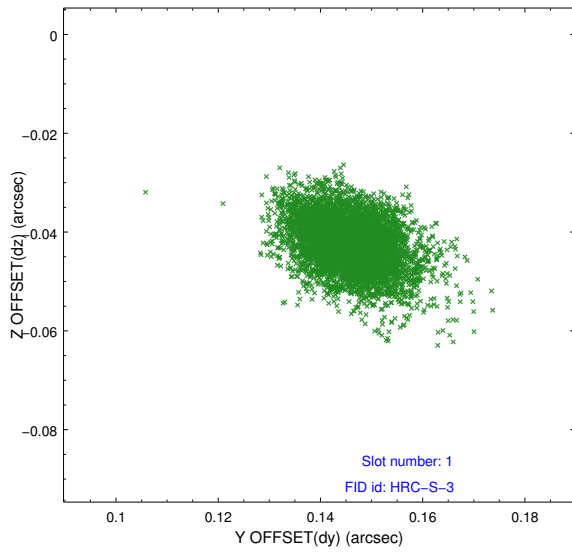


2.5 FID Slots

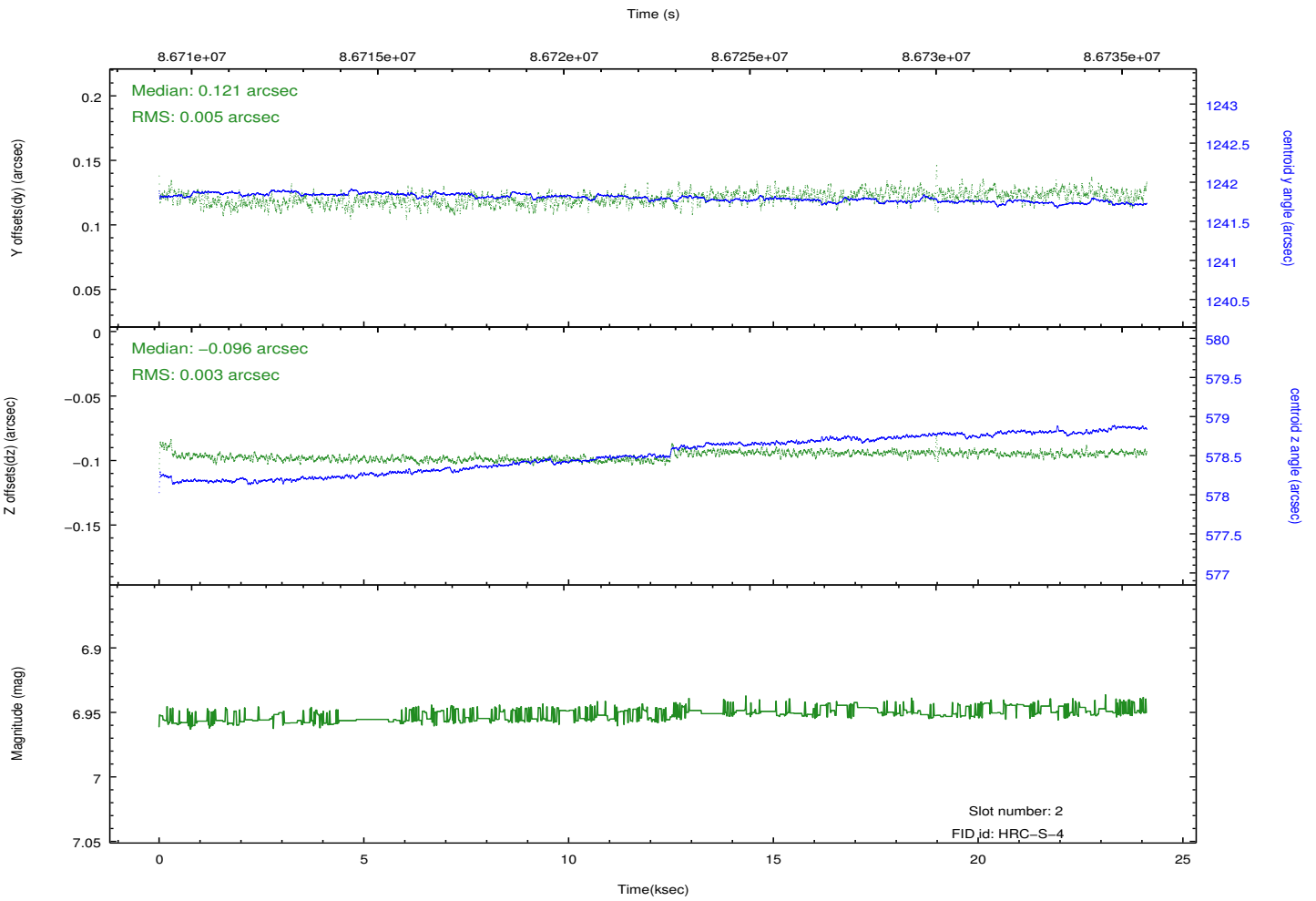
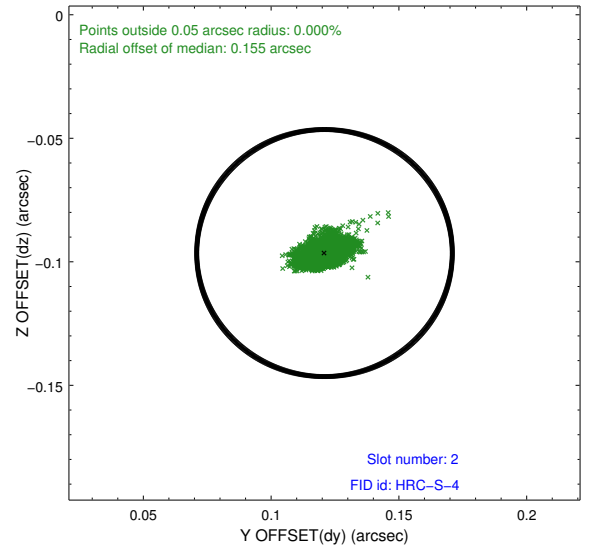
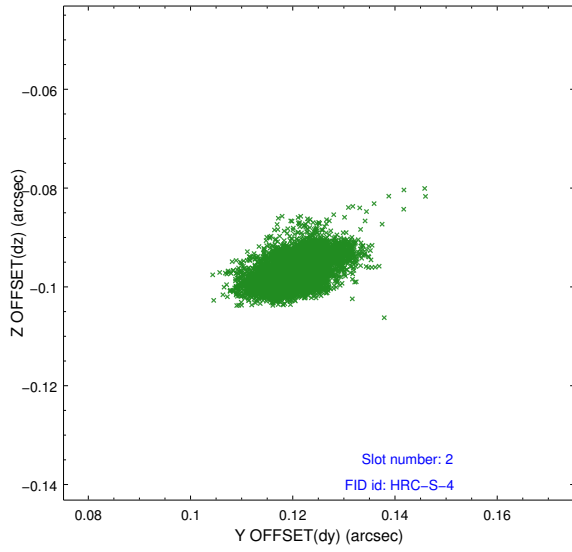
2.5.1 Slot 0



2.5.2 Slot 1

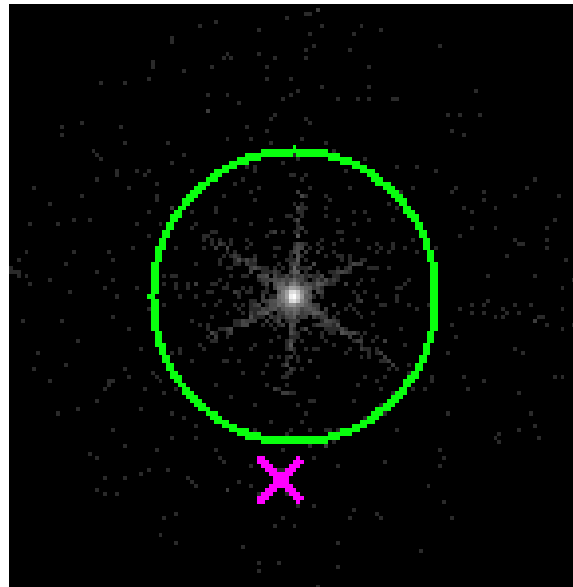


2.5.3 Slot 2

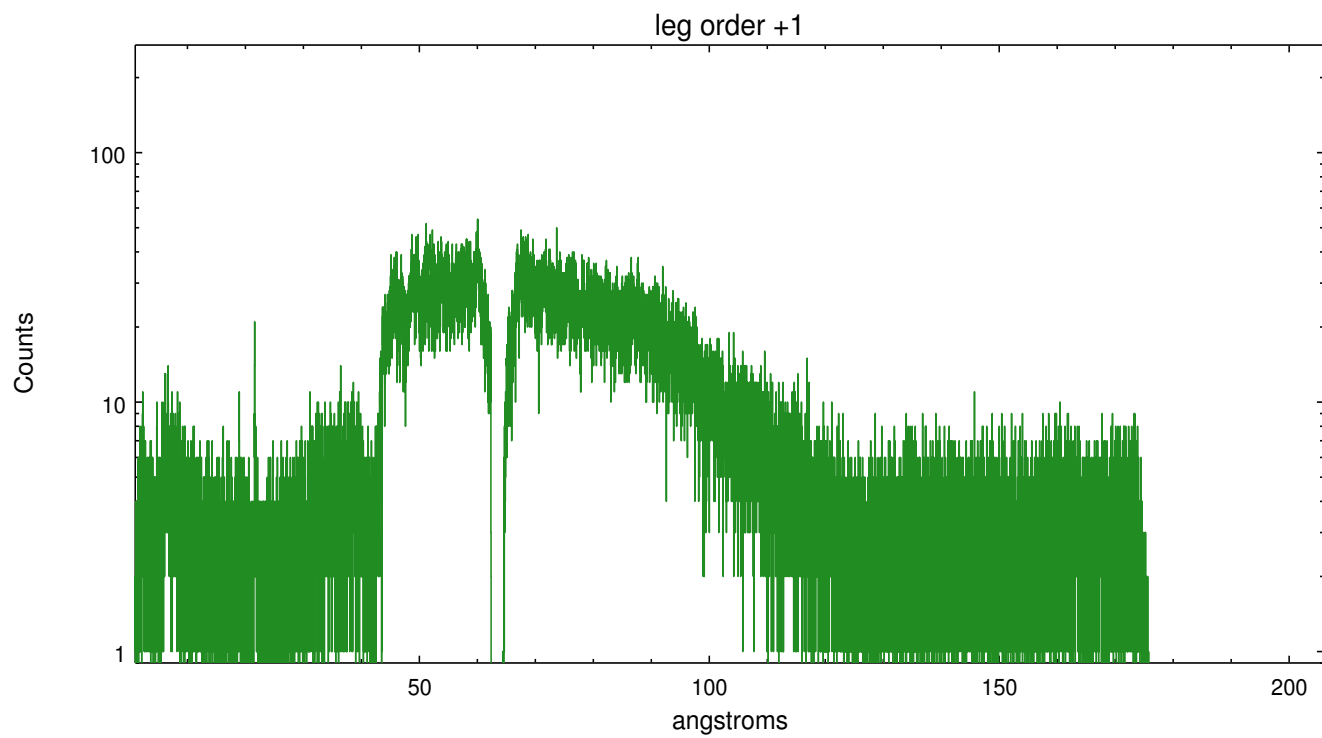
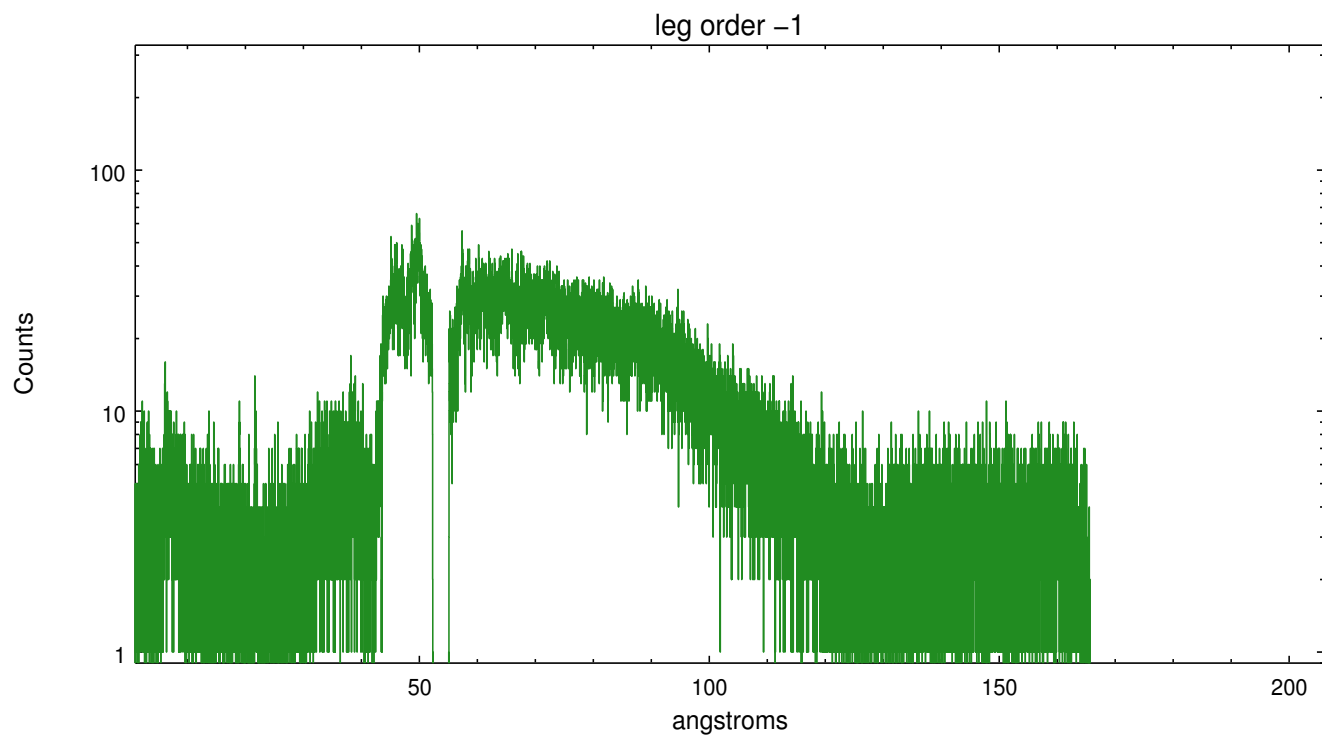


3 Gratings

3.1 LETG Arm



LETG Zero Order



A Summary

A.1 Status

V&V Scientist	Joy Nichols
V&V Date (YYYY-MM-DD)	2012.09.12
V&V Edition	1
V&V Disposition and Status	OK
V&V Charge Time	24.109

A.2 Comments

Optical monitoring of the target was performed during the observation in guide star slot 7.