

V&V Reference Report

L2 ASCDS Version : 8.4.3.1

Observation 6475 - L2 Version 3
Chandra X-Ray Center

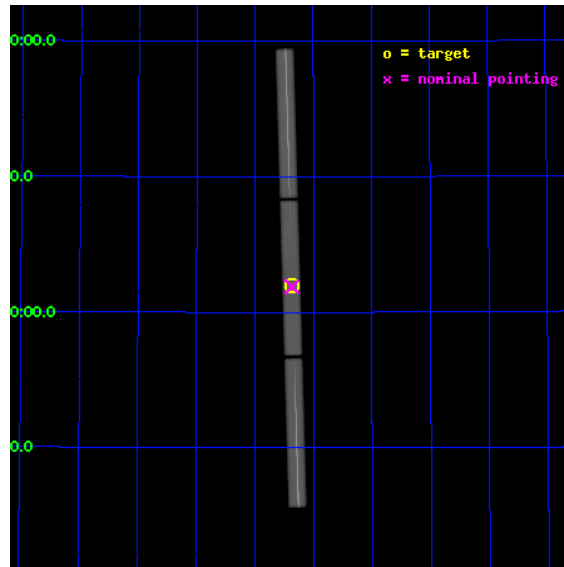
L2 Processing Date : Aug 11 2012

Contents

1	Front	2
2	OBI	3
2.1	OBI	3
2.1.1	Images	3
2.1.2	Parameters	4
2.1.3	Events	4
2.2	Compared Parameters	5
2.3	Aspect	6
2.4	Star Slots	9
2.4.1	Slot 3	9
2.4.2	Slot 4	10
2.4.3	Slot 5	11
2.4.4	Slot 6	12
2.4.5	Slot 7	13
2.5	FID Slots	14
2.5.1	Slot 0	14
2.5.2	Slot 1	15
2.5.3	Slot 2	16
3	Gratings	17
3.1	LETG Arm	17
A	Summary	19
A.1	Status	19
A.2	Comments	19

1 Front

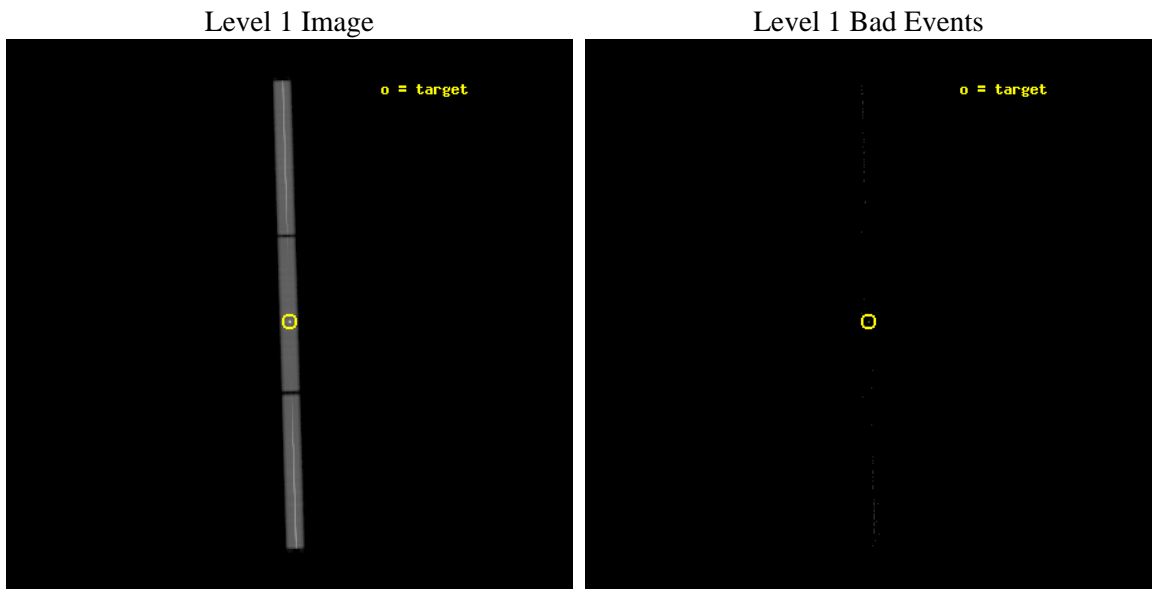
seq_num	290568	Sequence number
obs_id	6475	Observation id
title	AO7 Calibration Observations of HZ43	Proposal title
observer	Dr. CXC Calibration	Principal investigator
object	HZ43	Source name
ra_targ	199.092083	Observer's specified target RA [deg]
dec_targ	29.099	Observer's specified target Dec [deg]
ra_nom	199.09178410985	Nominal RA [deg]
dec_nom	29.094324257757	Nominal Dec [deg]
roll_nom	268.28240642471	Nominal Roll [deg]
revision	3	Processing version of data
ontime	20747.282223165	[s]
livetime	19685.566589882	Ontime multiplied by DTCOR
l2events	2611652	Number of level 2 events



2 OBI

2.1 OBI

2.1.1 Images



2.1.2 Parameters

obi_num	0	Obi number	sched_exp_time	20600.000000	[s] Scheduled observation exposure time
ascdsver	8.4.5	Processing system revision	ontime	20747.282223165	[s]
caldbver	4.5.1.1	 	l1events	3275586	Number of level 1 events
date	2012-08-11T10:20:20	Date and time of file creation			
revision	3	Processing version of data			

2.1.3 Events

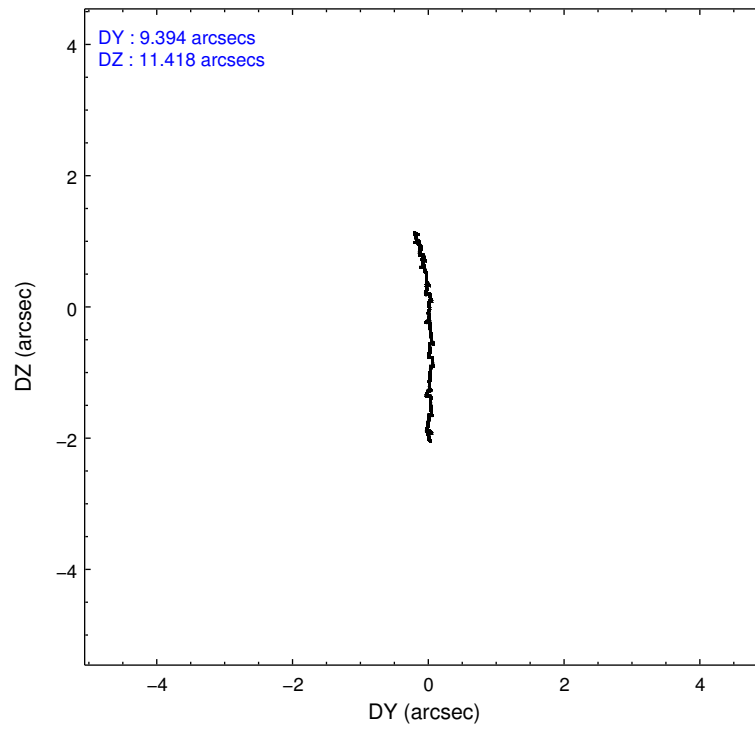
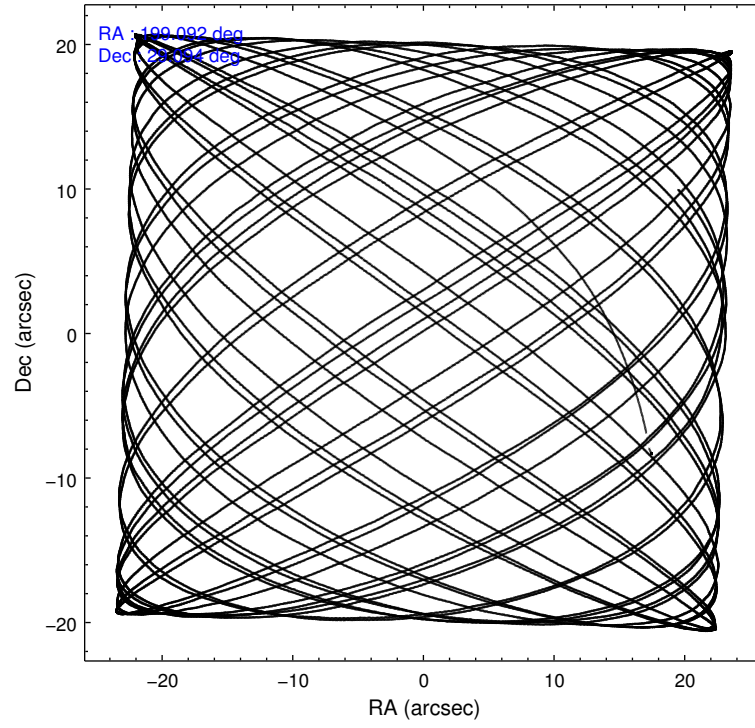
Level 1 Events

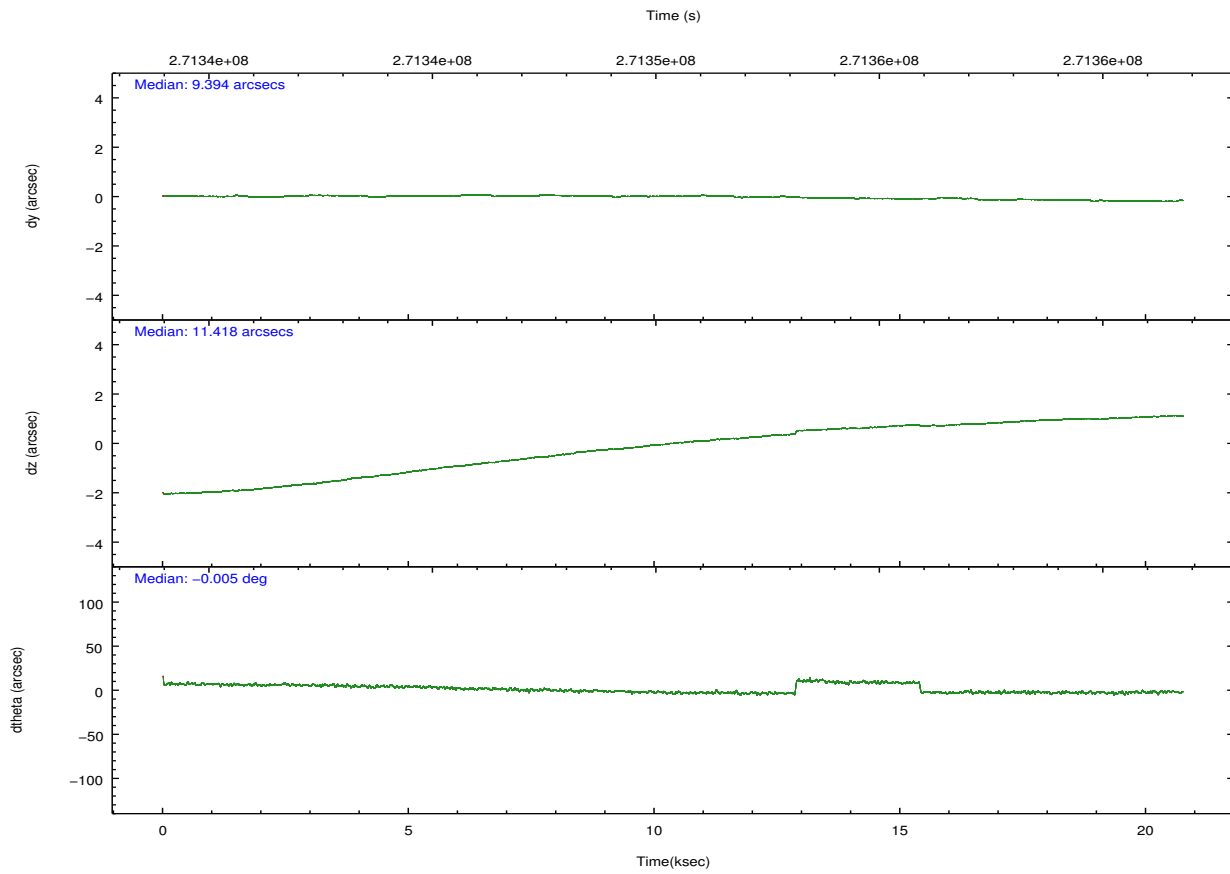
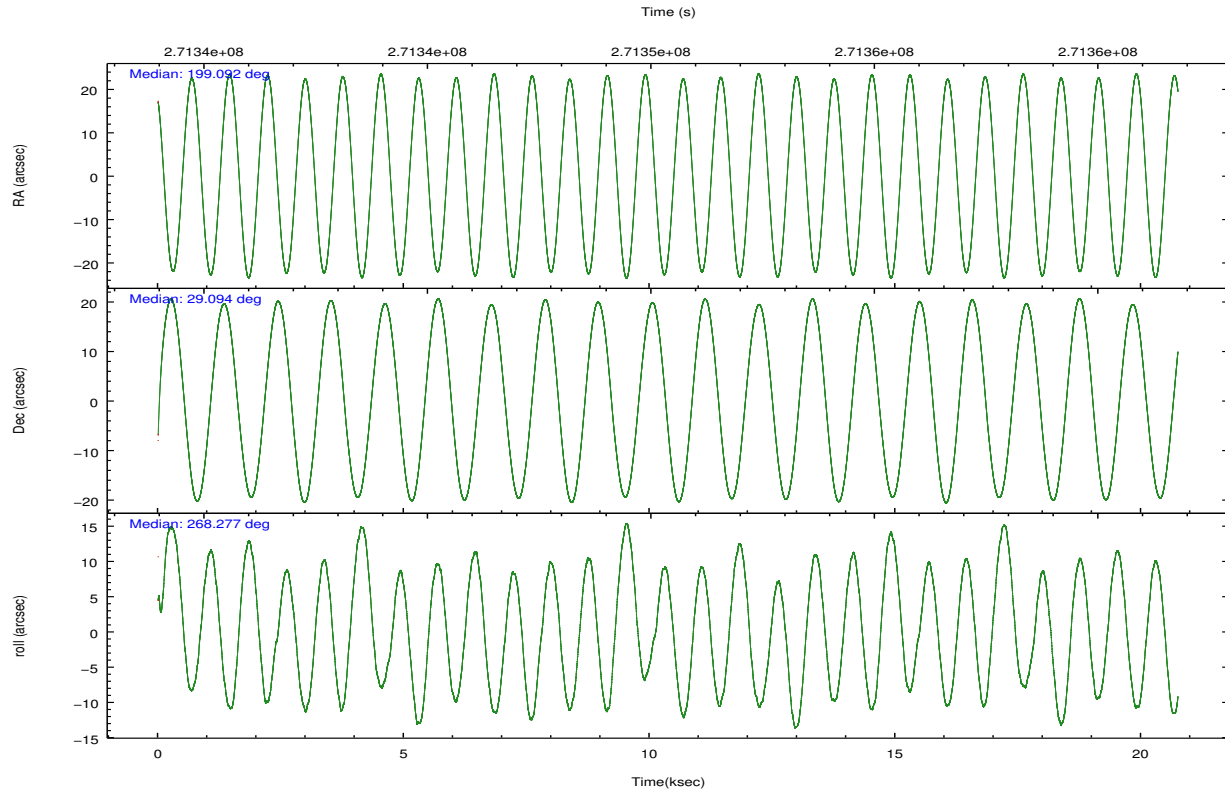
	segment 1	segment 2	segment 3
level 1 events	1146036	1010153	1119397
rejected events	53685	49342	48961
rejected %	4%	4%	4%

2.2 Compared Parameters

Parameter	Planned	Actual	Parameter	Planned	Actual
Instrument	HRC	HRC	Obspar format version number	7	7
Detector	HRC-S	HRC-S	Obspar file type	PREDICTED	ACTUAL
Grating	LETG	LETG	Obspar update status	NONE	UPDATED
Data mode	OBSERVING	OBSERVING			
Observation mode	POINTING	POINTING			
[deg] Pointing RA	199.074840	199.091784109854			
[deg] Pointing Dec	29.118810	29.09432425775668			
[deg] Pointing Roll	268.223312	268.2824064247128			
[s] Window start time (MET)	269308865.184000	269308865.184000			
[s] Window stop time (MET)	274665665.184000	274665665.184000			
[mm] SIM focus pos	-1.429586	-1.428180813131781			
[mm] SIM defocus	0.1037507710433287	0.1051558262725154			
[mm] SIM translation stage pos	250.455976	250.466033080201			
[mm] SIM translation stage offset	0	-0.01005468664627074			
[s] Observation start time (MET)	271340161.184000	271339000.50836			
Observation start date	2006-08-07T12:14:56	2006-08-07T11:56:40			
[s] Observation end time (MET)	271360761.184000	271362229.05945			
Observation end date	2006-08-07T17:58:16	2006-08-07T18:23:49			

2.3 Aspect



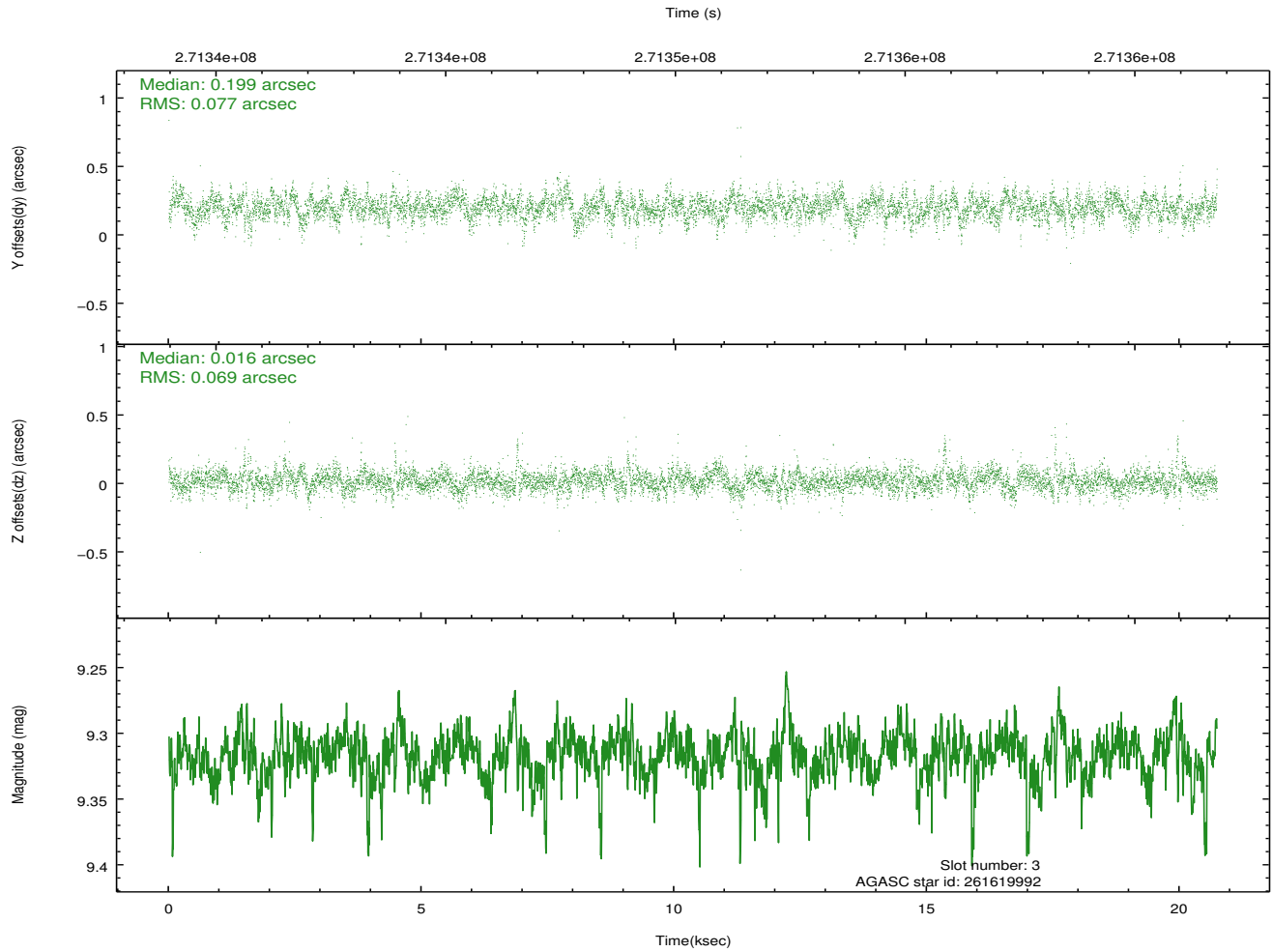
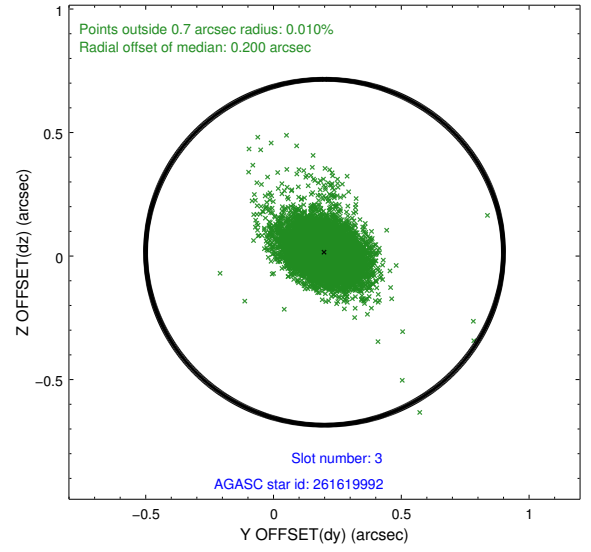
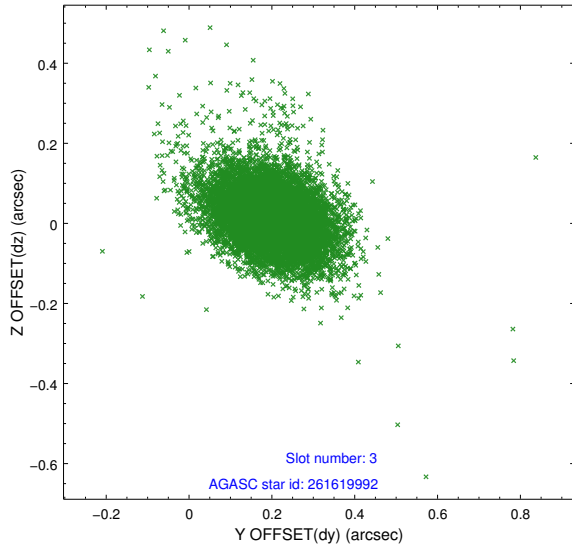


Slot Statistics

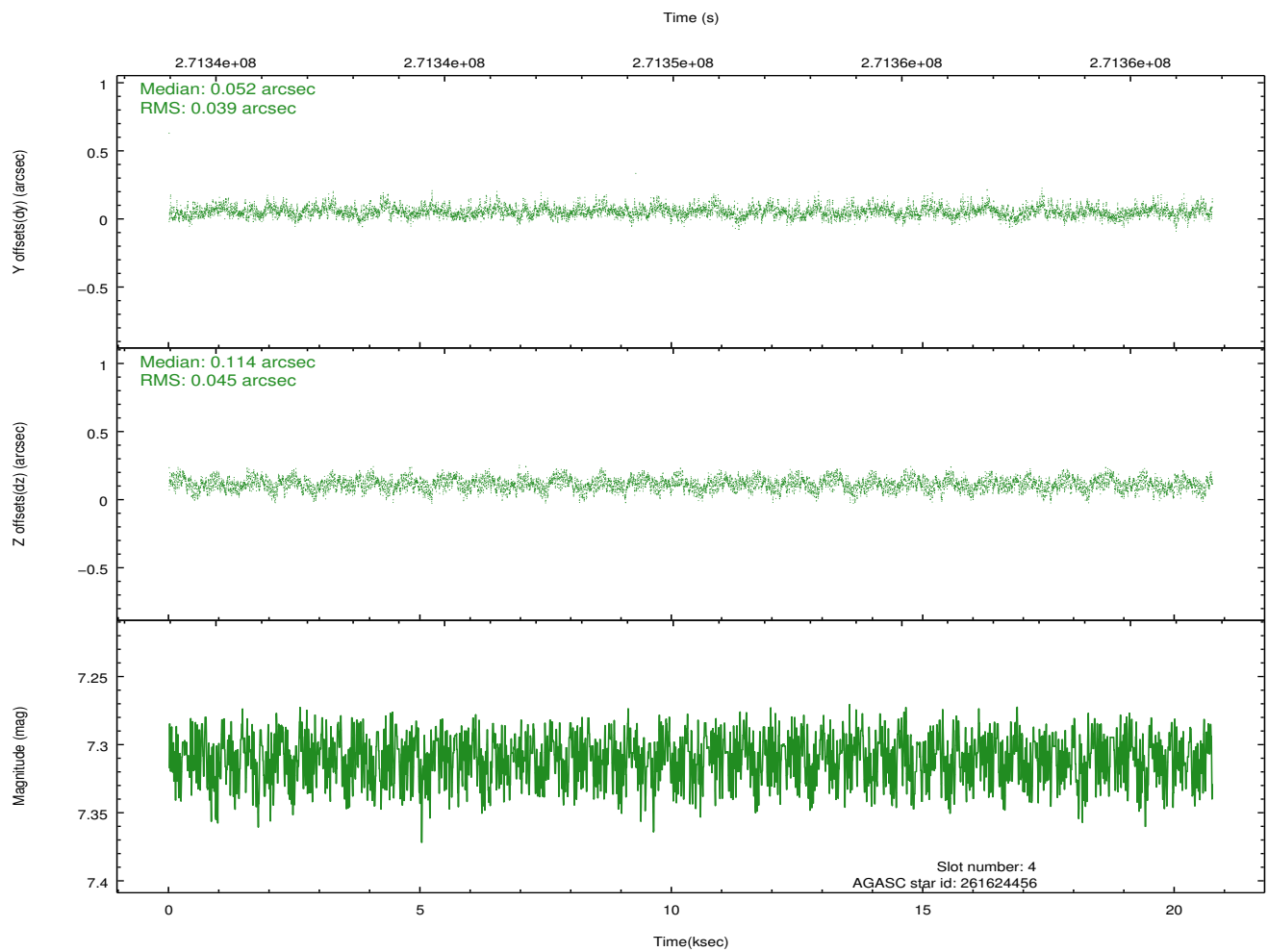
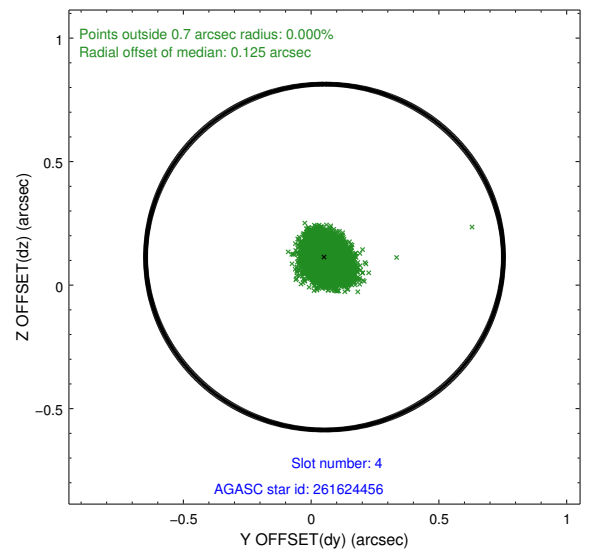
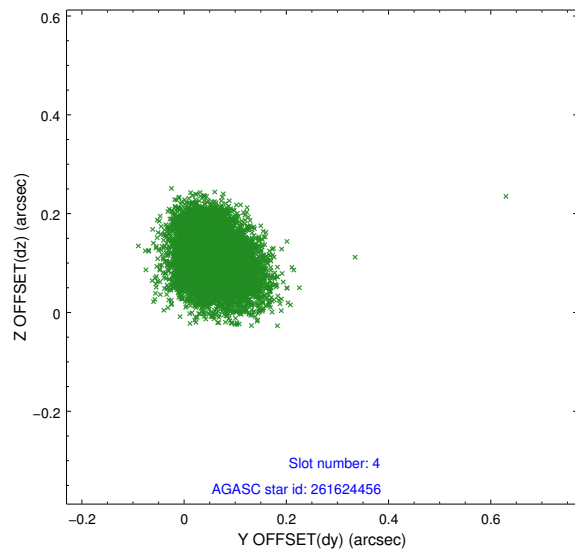
slot	status	id	mag	n_pts	med_dy	med_dz	dr1	dr2	ra	dec	mean_y	mean_z
0	FID	HRC-S-1	6.99	5060	0.089	-0.158	0.038	0.051	0.000000	0.000000	-1163.60	-459.96
1	FID	HRC-S-3	7.00	5061	0.094	-0.059	0.044	0.059	0.000000	0.000000	-1166.57	569.59
2	FID	HRC-S-4	6.94	5058	0.205	-0.083	0.008	0.023	0.000000	0.000000	1234.52	572.37
3	GUIDE	261619992	9.32	10058	0.199	0.016	0.103	0.181	198.395553	28.647634	1756.53	-2092.29
4	GUIDE	261624456	7.31	10122	0.052	0.114	0.062	0.104	199.758056	28.567828	1909.10	2220.21
5	GUIDE	261629720	8.10	10117	-0.035	-0.145	0.065	0.104	199.236176	29.044452	251.92	516.07
6	GUIDE	261626352	8.60	10118	-0.239	-0.073	0.079	0.127	198.417097	29.781420	-2326.55	-2129.35
7	GUIDE	261623040	9.12	10108	0.023	0.087	0.082	0.133	198.792686	29.757643	-2272.21	-952.95

2.4 Star Slots

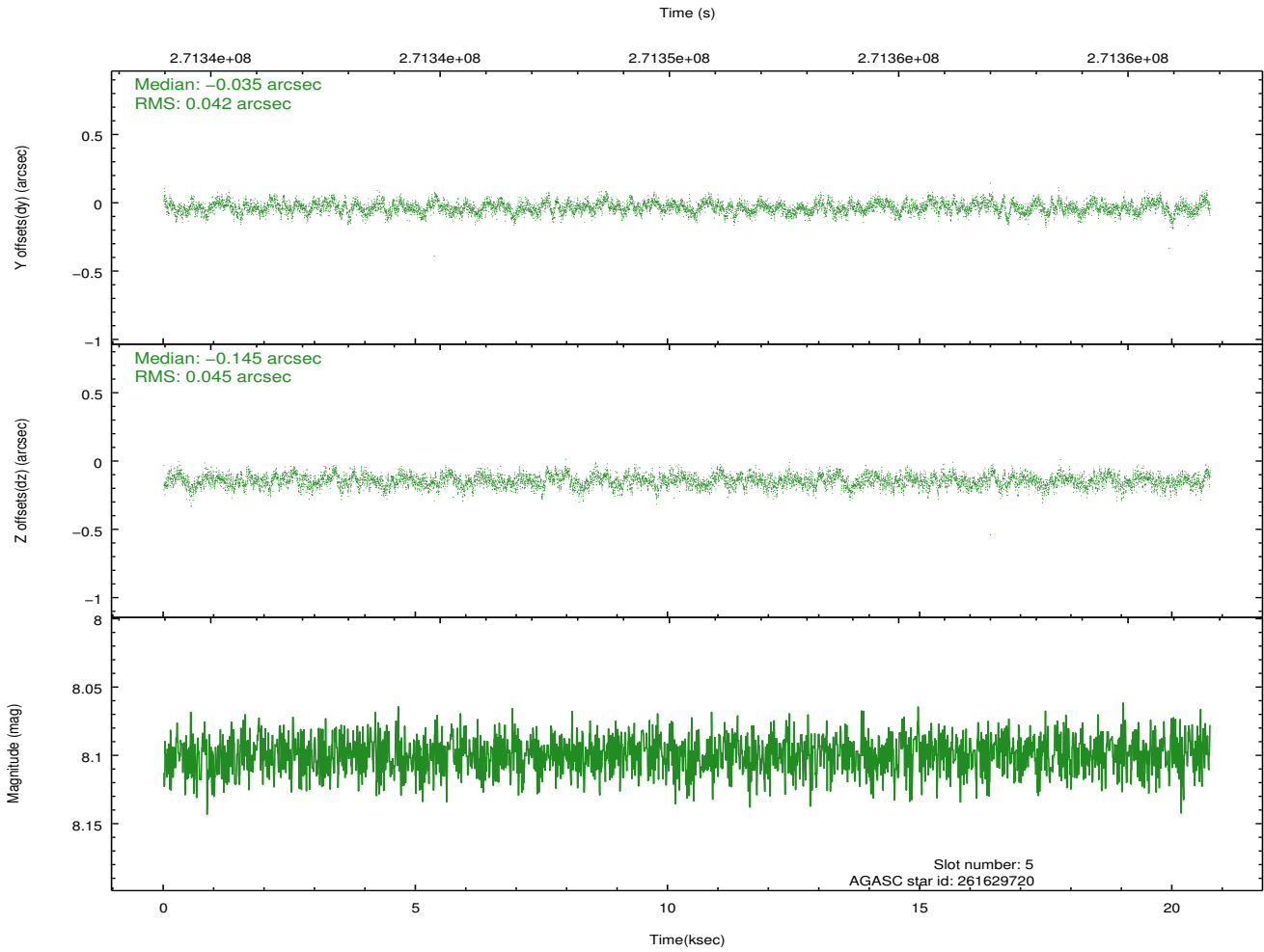
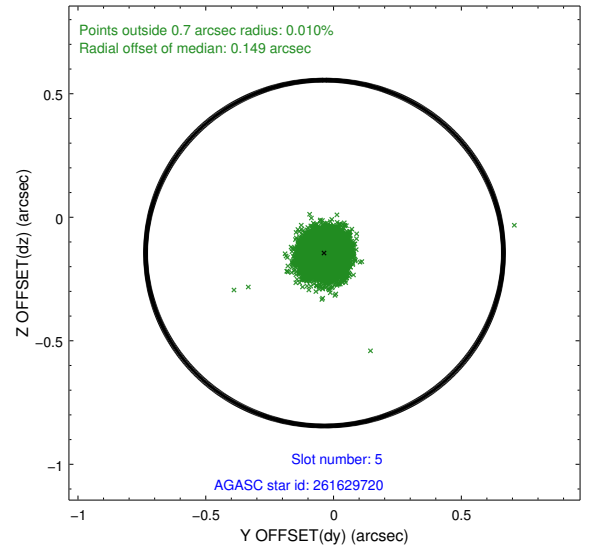
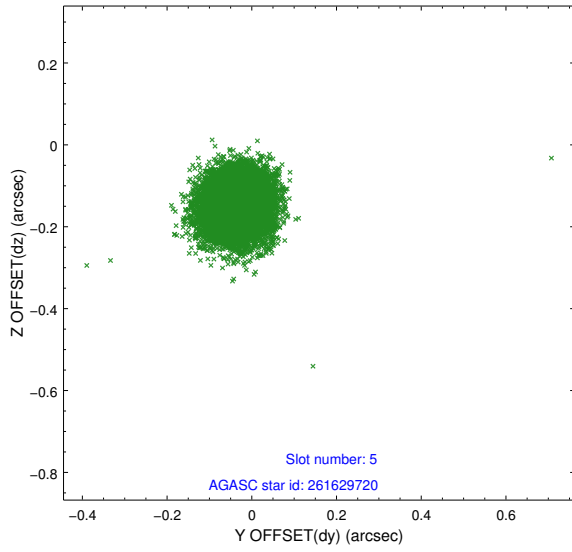
2.4.1 Slot 3



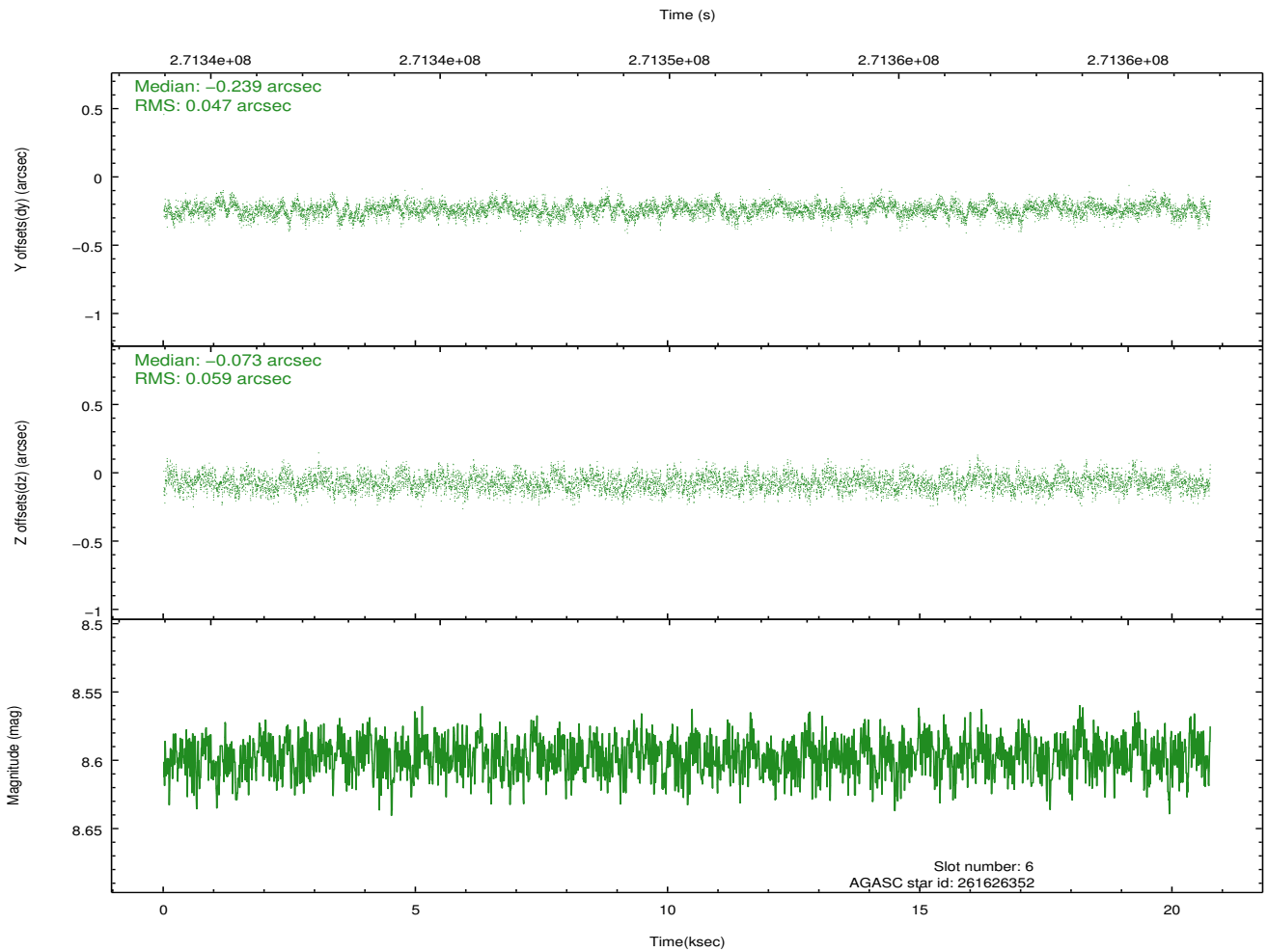
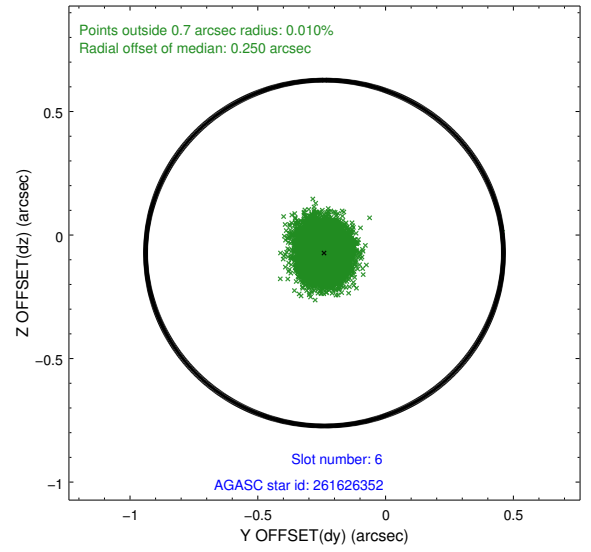
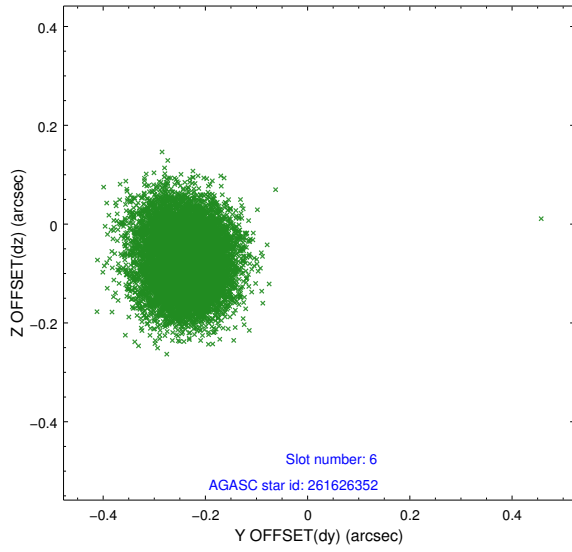
2.4.2 Slot 4



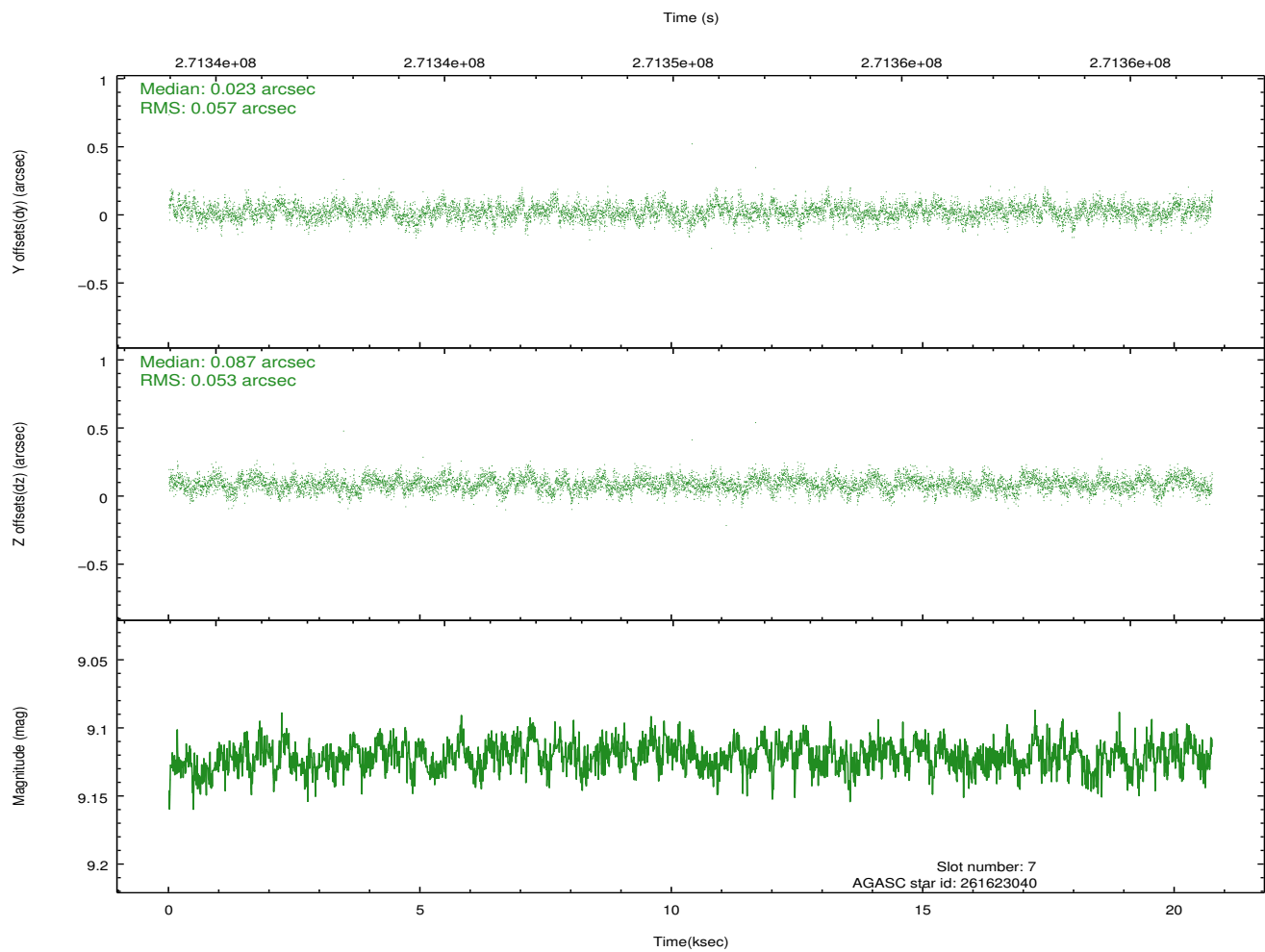
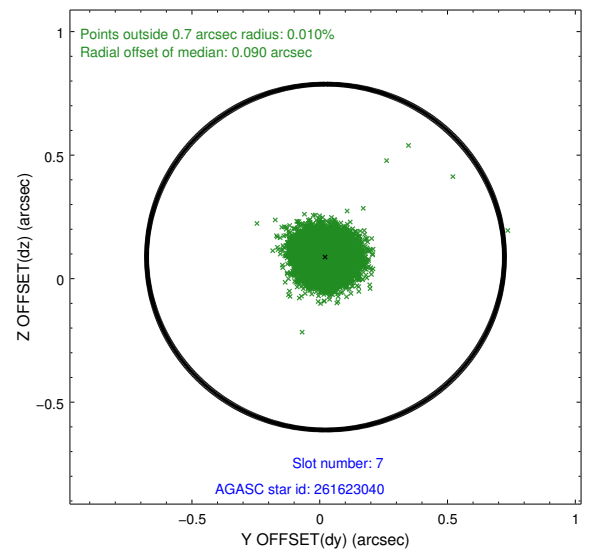
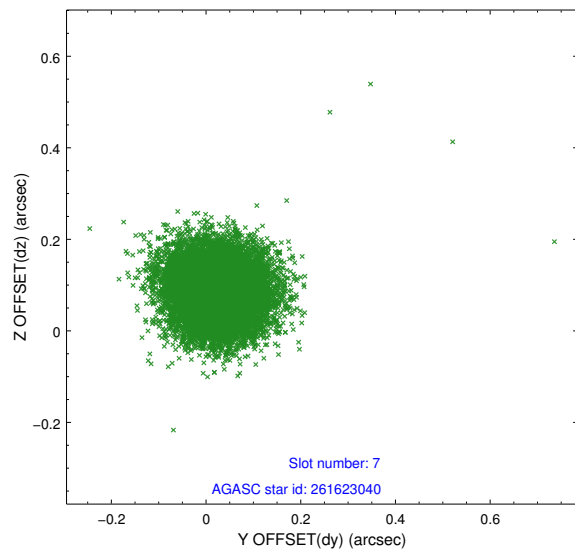
2.4.3 Slot 5



2.4.4 Slot 6

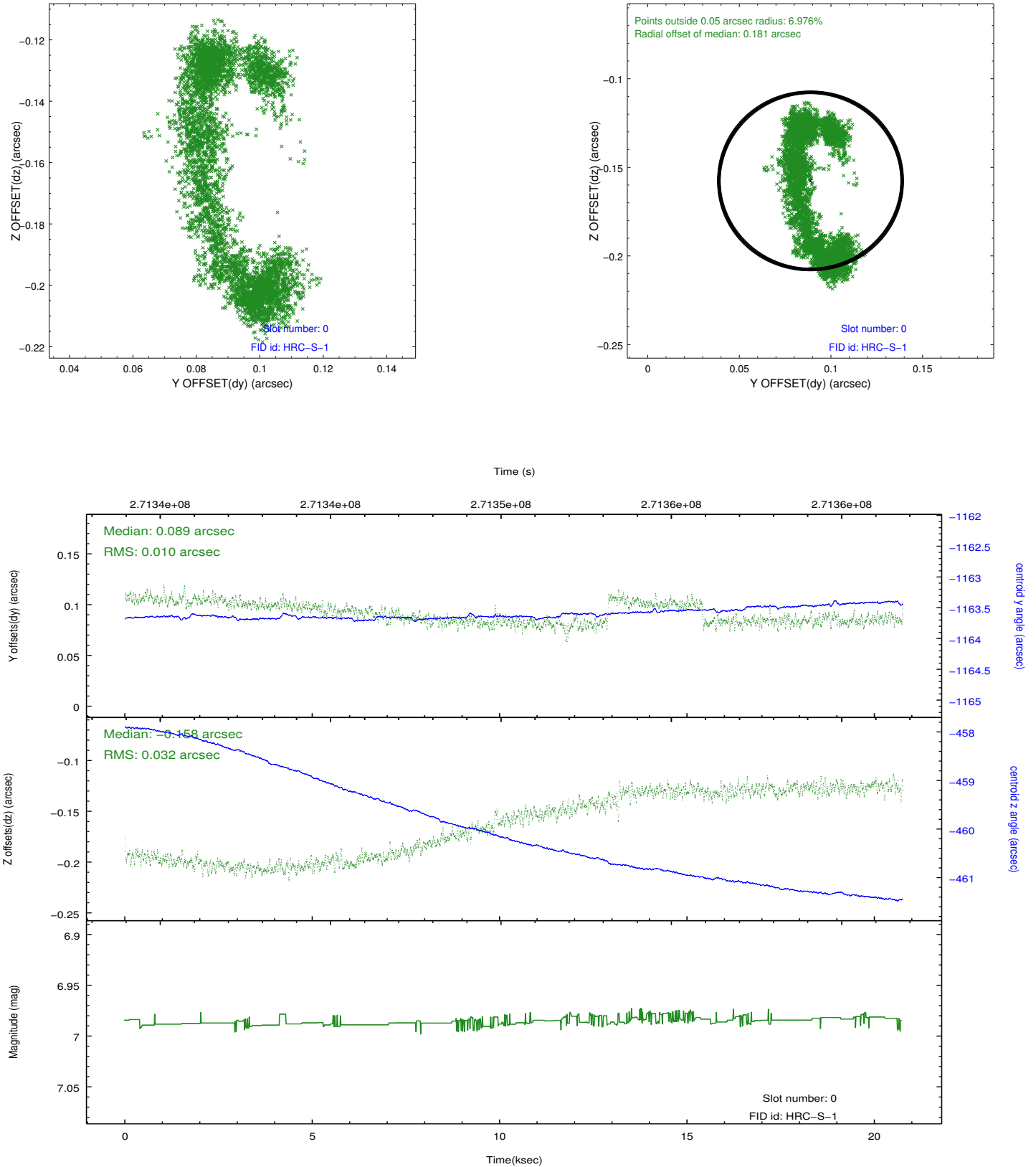


2.4.5 Slot 7

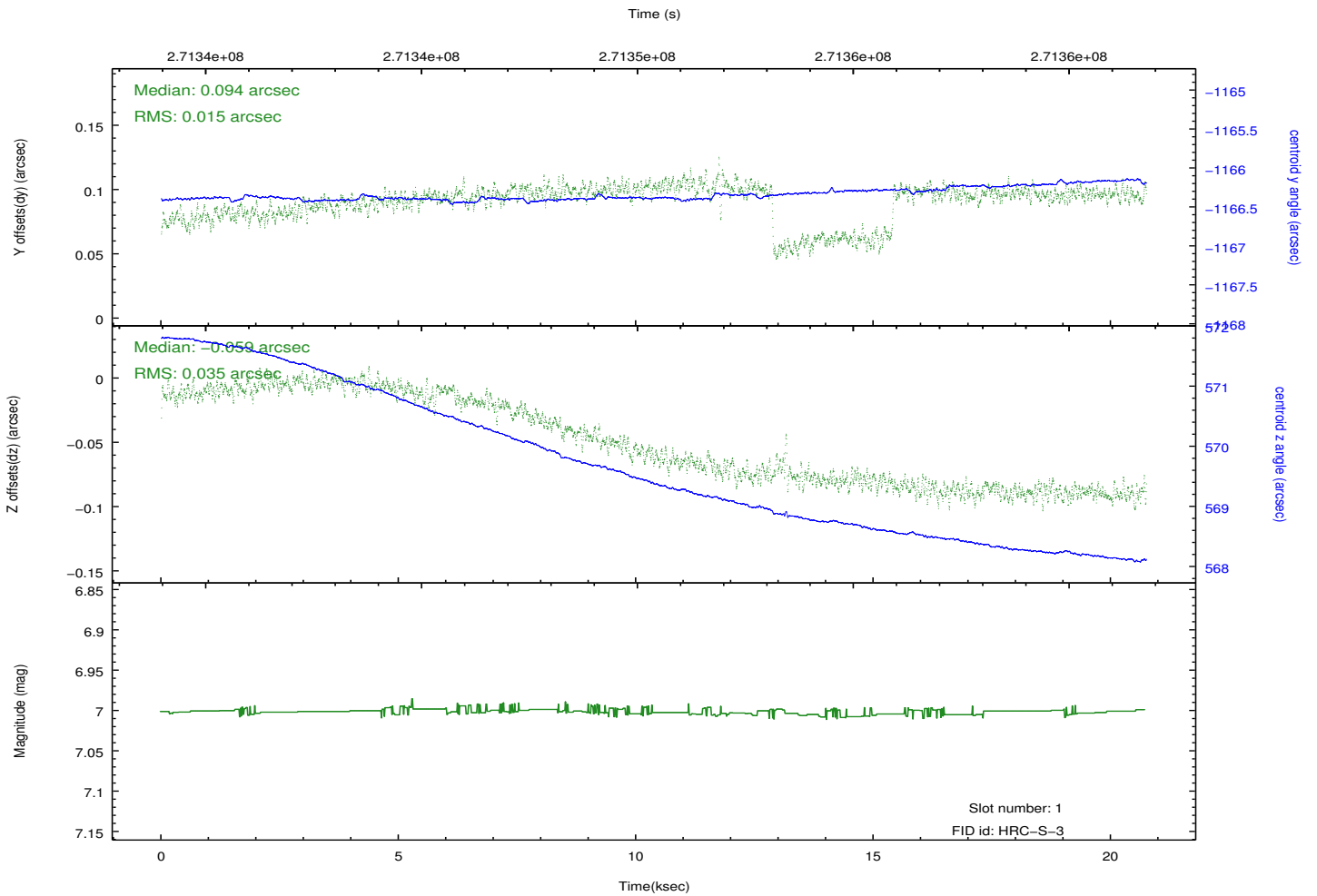
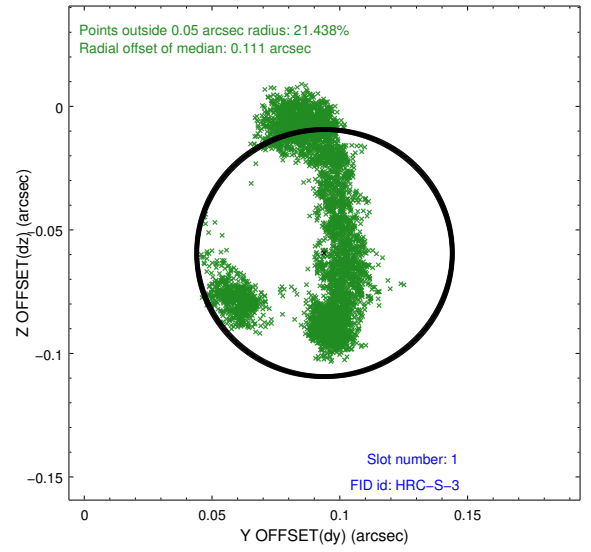
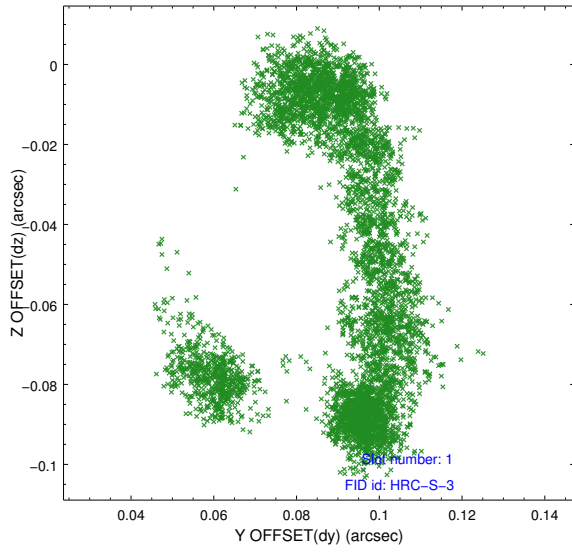


2.5 FID Slots

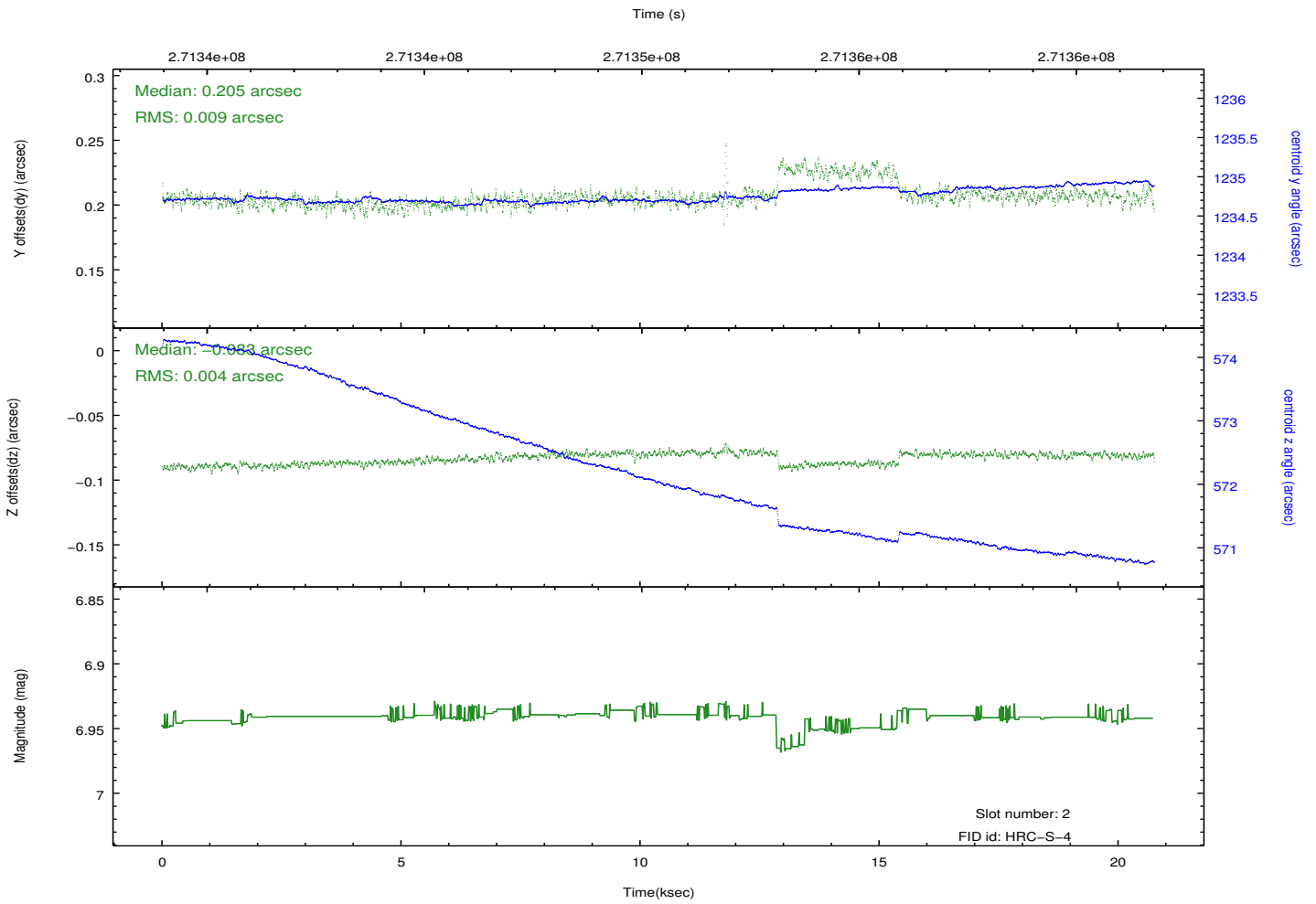
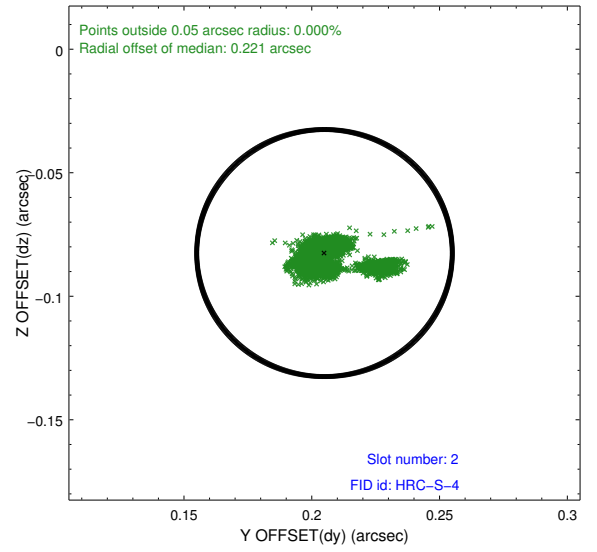
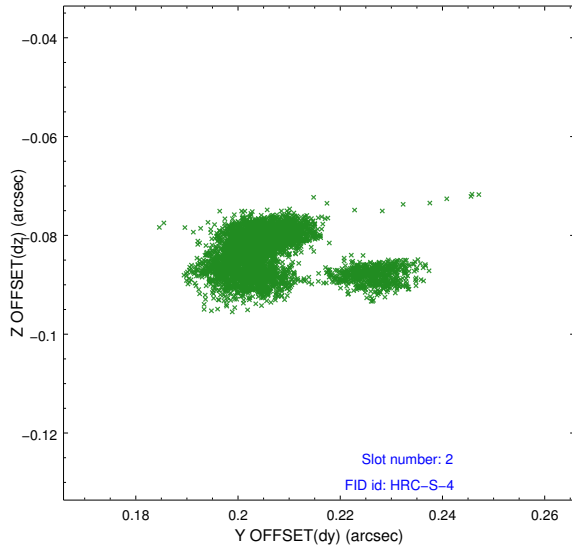
2.5.1 Slot 0



2.5.2 Slot 1

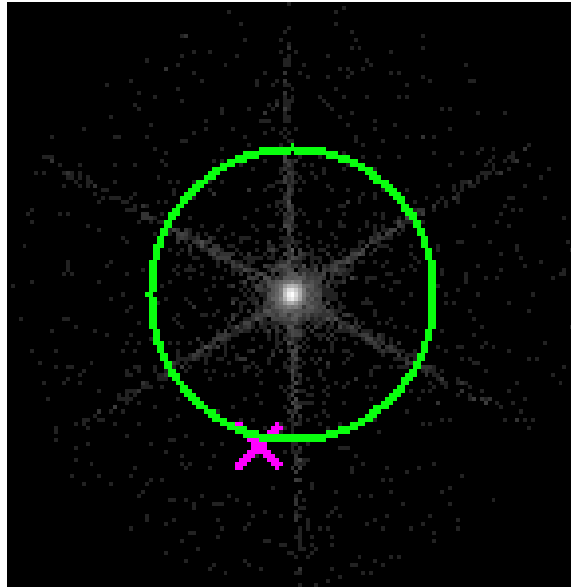


2.5.3 Slot 2

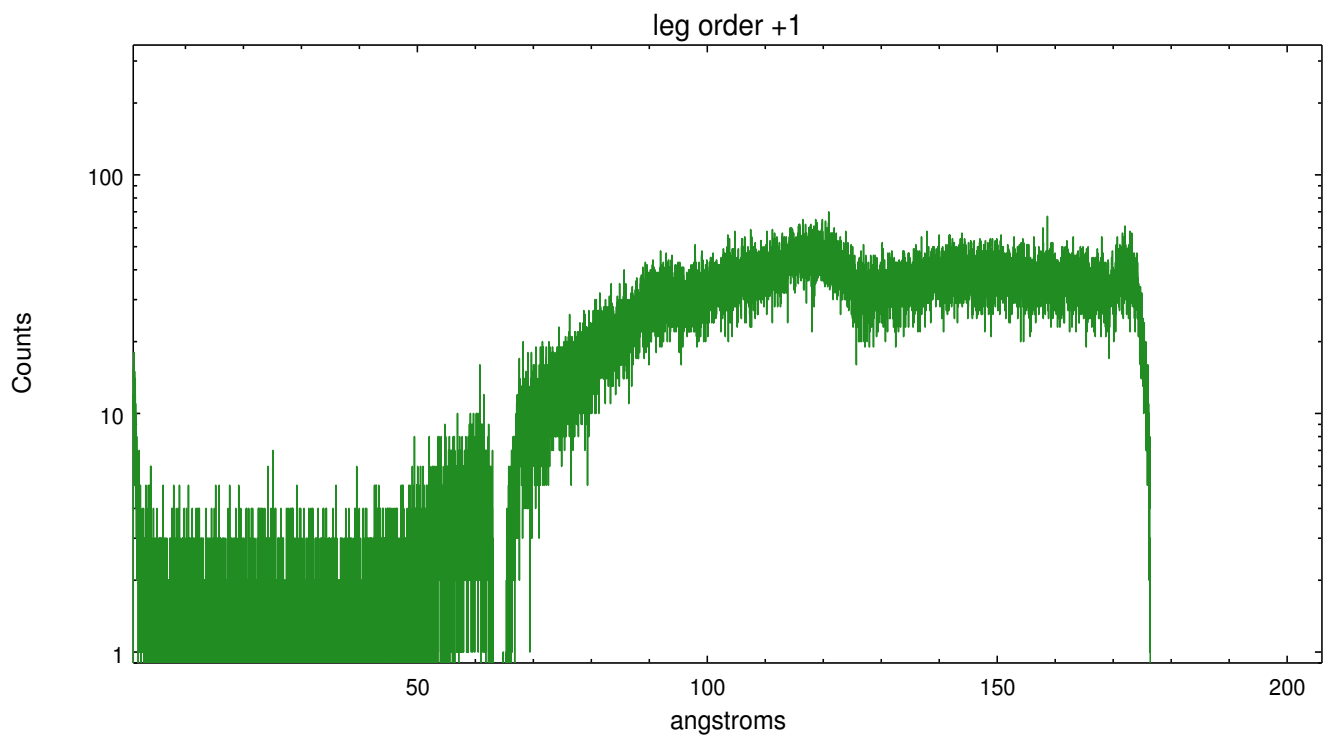
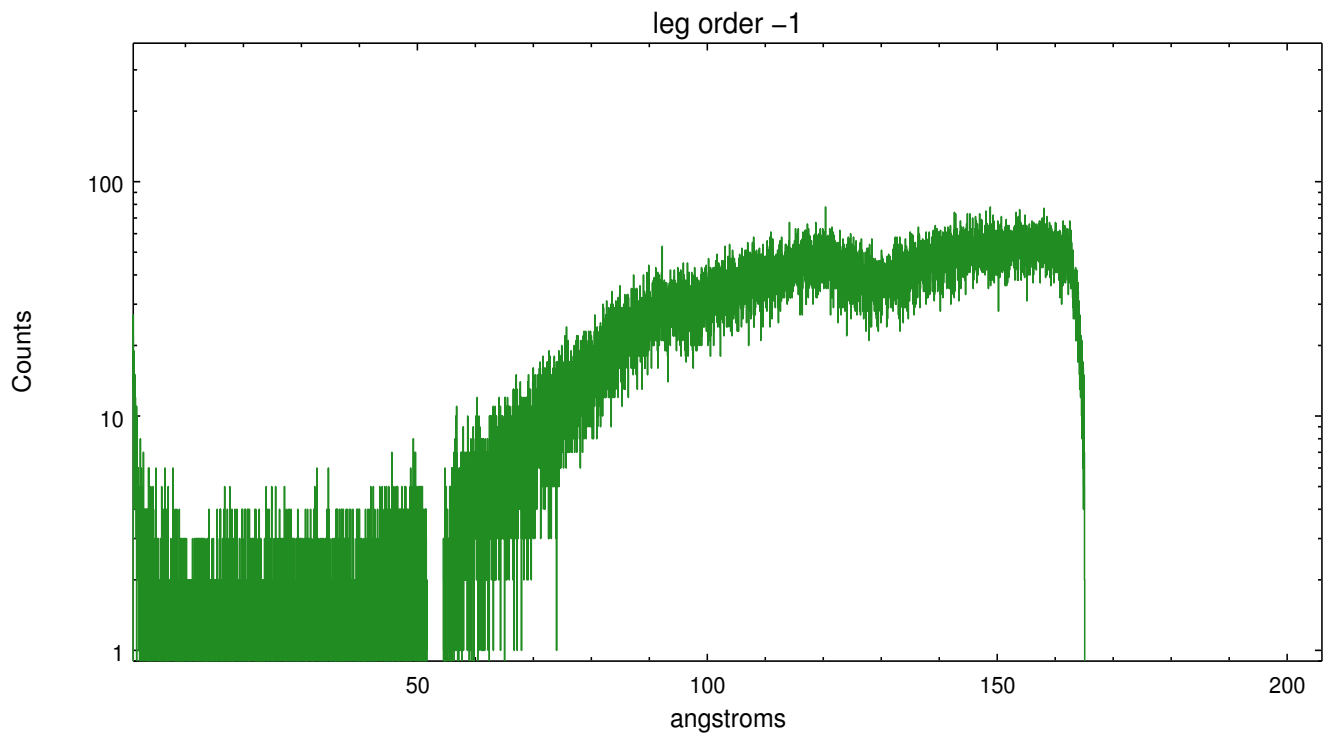


3 Gratings

3.1 LETG Arm



LETG Zero Order



A Summary

A.1 Status

V&V Scientist	Joy Nichols
V&V Date (YYYY-MM-DD)	2012.08.14
V&V Edition	1
V&V Disposition and Status	OK
V&V Charge Time	20.7472822

A.2 Comments

First half of observation affected by high level of radiation.