

# V&V Reference Report

## L2 ASCDS Version : 8.4.3.1

Observation 6675 - L2 Version 2  
Chandra X-Ray Center

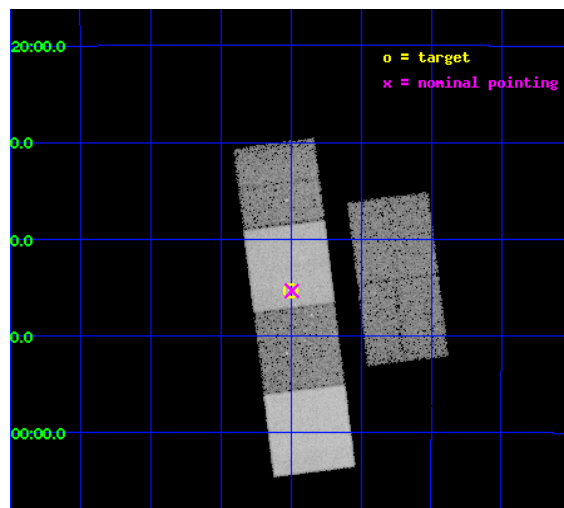
L2 Processing Date : Apr 7 2012

## Contents

<b>1</b>	<b>Front</b>	<b>2</b>
<b>2</b>	<b>OBI</b>	<b>3</b>
2.1	OBI . . . . .	3
2.1.1	Images . . . . .	3
2.1.2	Bias . . . . .	3
2.1.3	Parameters . . . . .	4
2.1.4	Events . . . . .	4
2.2	Compared Parameters . . . . .	5
2.3	Aspect . . . . .	6
2.4	Star Slots . . . . .	9
2.4.1	Slot 3 . . . . .	9
2.4.2	Slot 4 . . . . .	10
2.4.3	Slot 5 . . . . .	11
2.4.4	Slot 6 . . . . .	12
2.4.5	Slot 7 . . . . .	13
2.5	FID Slots . . . . .	14
2.5.1	Slot 0 . . . . .	14
2.5.2	Slot 1 . . . . .	15
2.5.3	Slot 2 . . . . .	16
<b>A</b>	<b>Summary</b>	<b>17</b>
A.1	Status . . . . .	17
A.2	Comments . . . . .	17

# 1 Front

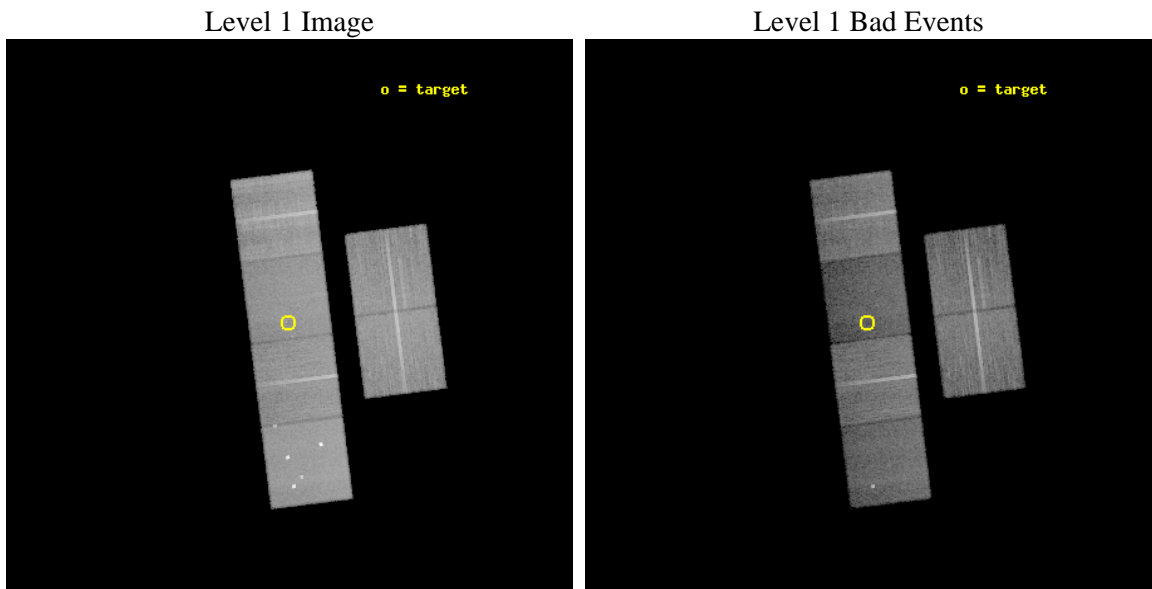
seq_num	500629	Sequence number
obs_id	6675	Observation id
title	Astrometric and spectral study of two new isolated neutron star candidates	Proposal title
observer	Dr Christian Motch	Principal investigator
object	XMMU J182830-114516	Source name
dtcycle	0	&#160
cycle	P	events from which exps? Prim/Second/Both
ra_targ	277.125	Observer's specified target RA [deg]
dec_targ	-11.754611	Observer's specified target Dec [deg]
ra_nom	277.12317660856	Nominal RA [deg]
dec_nom	-11.755610419602	Nominal Dec [deg]
roll_nom	262.84135669033	Nominal Roll [deg]
revision	2	Processing version of data
ontime	20953.599922001	Sum of GTIs [s]
livetime	20688.272823046	Livetime [s]
ontime2	20943.876991034	Sum of GTIs [s]
ontime3	20953.599922001	Sum of GTIs [s]
ontime5	20953.599922001	Sum of GTIs [s]
ontime6	20953.599922001	Sum of GTIs [s]
ontime7	20953.599922001	Sum of GTIs [s]
ontime8	20947.117961466	Sum of GTIs [s]
l2events	213236	Number of level 2 events



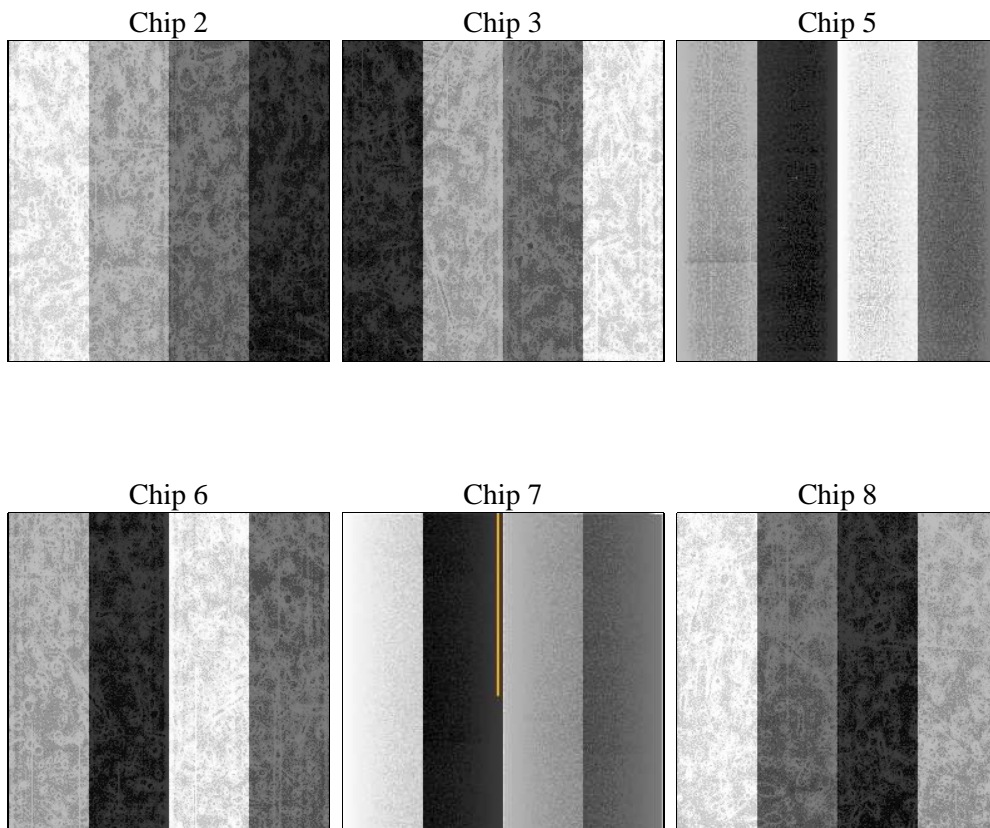
## 2 OBI

### 2.1 OBI

#### 2.1.1 Images



#### 2.1.2 Bias



### 2.1.3 Parameters

obi_num	0	Obi number	sched_exp_time	21000.000000	[s] Scheduled observation exposure time
ascdsver	8.4.3.1	Processing system revision	ontime	20953.599922001	Sum of GTIs [s]
caldbver	4.4.9	&#160	ontime2	20943.876991034	Sum of GTIs [s]
date	2012-04-07T11:03:17	Date and time of file creation	ontime3	20953.599922001	Sum of GTIs [s]
revision	2	Processing version of data	ontime5	20953.599922001	Sum of GTIs [s]
			ontime6	20953.599922001	Sum of GTIs [s]
			ontime7	20953.599922001	Sum of GTIs [s]
			ontime8	20947.117961466	Sum of GTIs [s]
			l1events	971622	Number of level 1 events

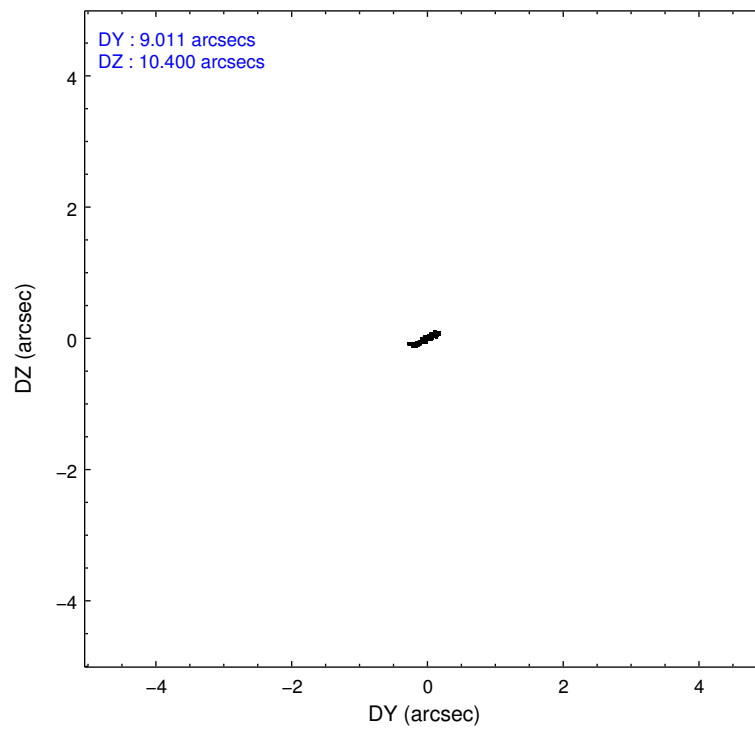
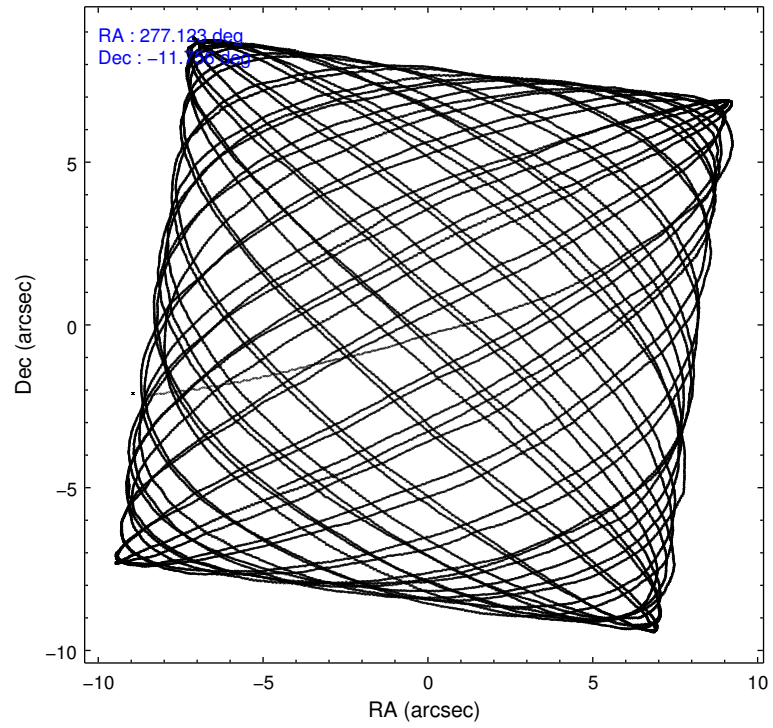
### 2.1.4 Events

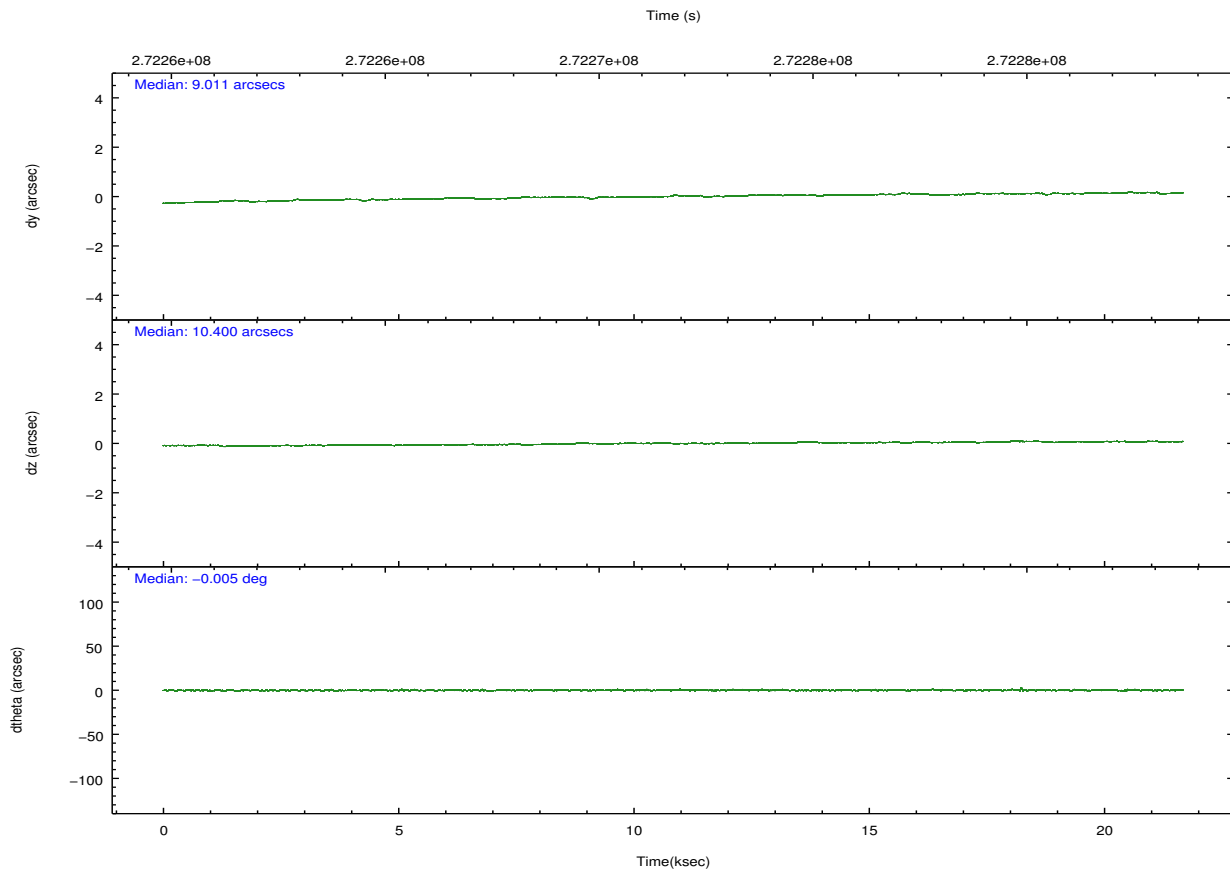
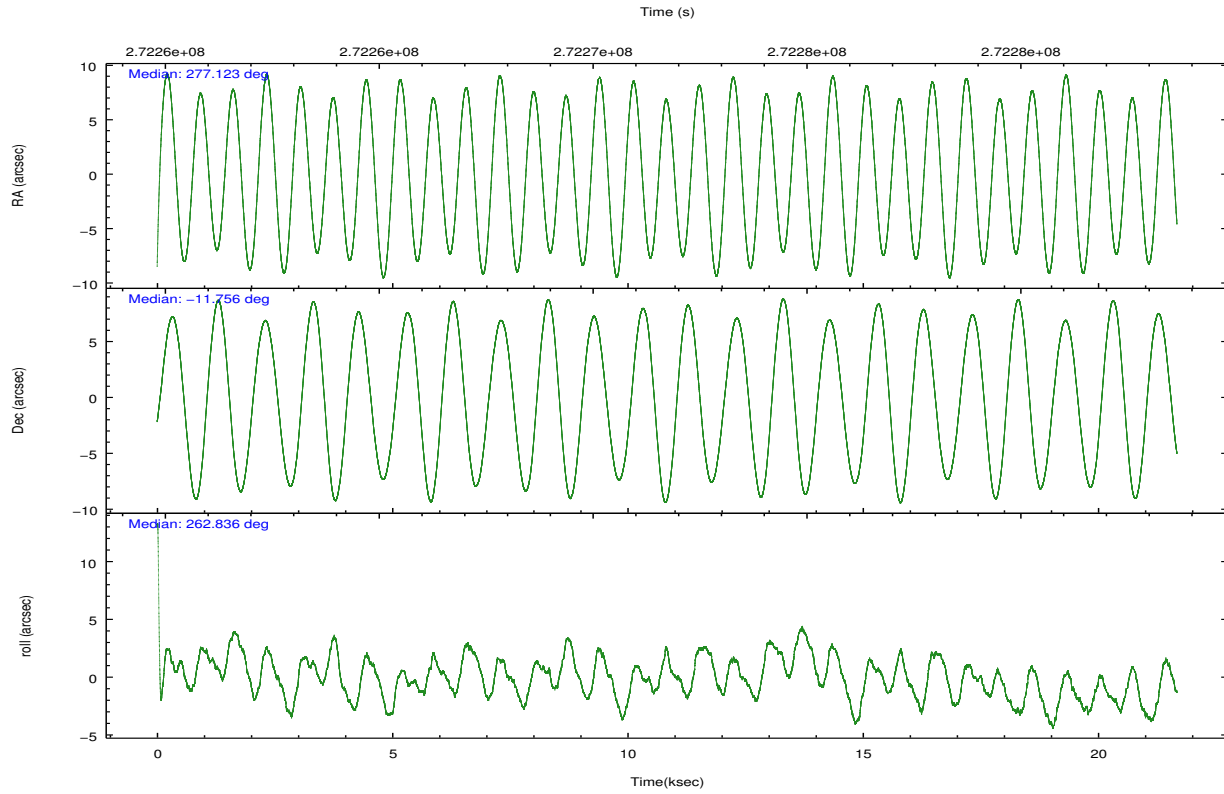
	ccd 2	ccd 3	ccd 5	ccd 6	ccd 7	ccd 8		ccd 2	ccd 3	ccd 5	ccd 6	ccd 7	ccd 8
level 1 events	159036	144383	194958	149096	140421	183728	grade 0 events	6332	5908	20162	7028	7081	13600
rejected events	143536	129764	86087	132117	70166	136851		3%	4%	10%	4%	5%	7%
rejected %	90%	89%	44%	88%	49%	74%	grade 1 events	93	82	1356	62	143	112
								0%	0%	0%	0%	0%	0%
							grade 2 events	3531	2957	31536	3597	15000	10675
								2%	2%	16%	2%	10%	5%
							grade 3 events	1592	1568	4362	1684	6759	5379
								1%	1%	2%	1%	4%	2%
							grade 4 events	1597	1624	4186	1664	6746	4953
								1%	1%	2%	1%	4%	2%
							grade 5 events	3958	4809	14671	5011	14890	7392
								2%	3%	7%	3%	10%	4%
							grade 6 events	2454	2567	48668	3014	34693	12303
								1%	1%	24%	2%	24%	6%
							grade 7 events	139479	124868	70017	127036	55109	129314
								87%	86%	35%	85%	39%	70%

## 2.2 Compared Parameters

Parameter	Planned	Actual	Parameter	Planned	Actual
Instrument	ACIS	ACIS	Obspar format version number	7	7
Detector	ACIS-235678	ACIS-235678	Obspar file type	PREDICTED	ACTUAL
Grating	NONE	NONE	Obspar update status	NONE	UPDATED
Data mode	VFAINT	VFAINT	Number of optional ACIS chips dropped	0	0
Observation mode	POINTING	POINTING	On-chip summing requested	N	N
[deg] Pointing RA	277.112001	277.1231766085647	Subarray requested	NONE	NONE
[deg] Pointing Dec	-11.730675	-11.755610419602	Alternating exposures requested	N	N
[deg] Pointing Roll	262.682444	262.8413566903295	[s] Primary exposure time	0.000000	3.2
[mm] SIM focus pos	-0.684267	-0.6828225247311905			
[mm] SIM defocus	0	0.001444936568705701			
[mm] SIM translation stage pos	-190.132523	-190.1400660498719			
[mm] SIM translation stage offset	0	0.00754346686406393			
[s] Observation start time (MET)	272261560.184000	272260210.58908			
Observation start date	2006-08-18T04:11:35	2006-08-18T03:50:10			
[s] Observation end time (MET)	272282560.184000	272283391.47767			
Observation end date	2006-08-18T10:01:35	2006-08-18T10:16:31			
Read mode	TIMED	TIMED			

## 2.3 Aspect



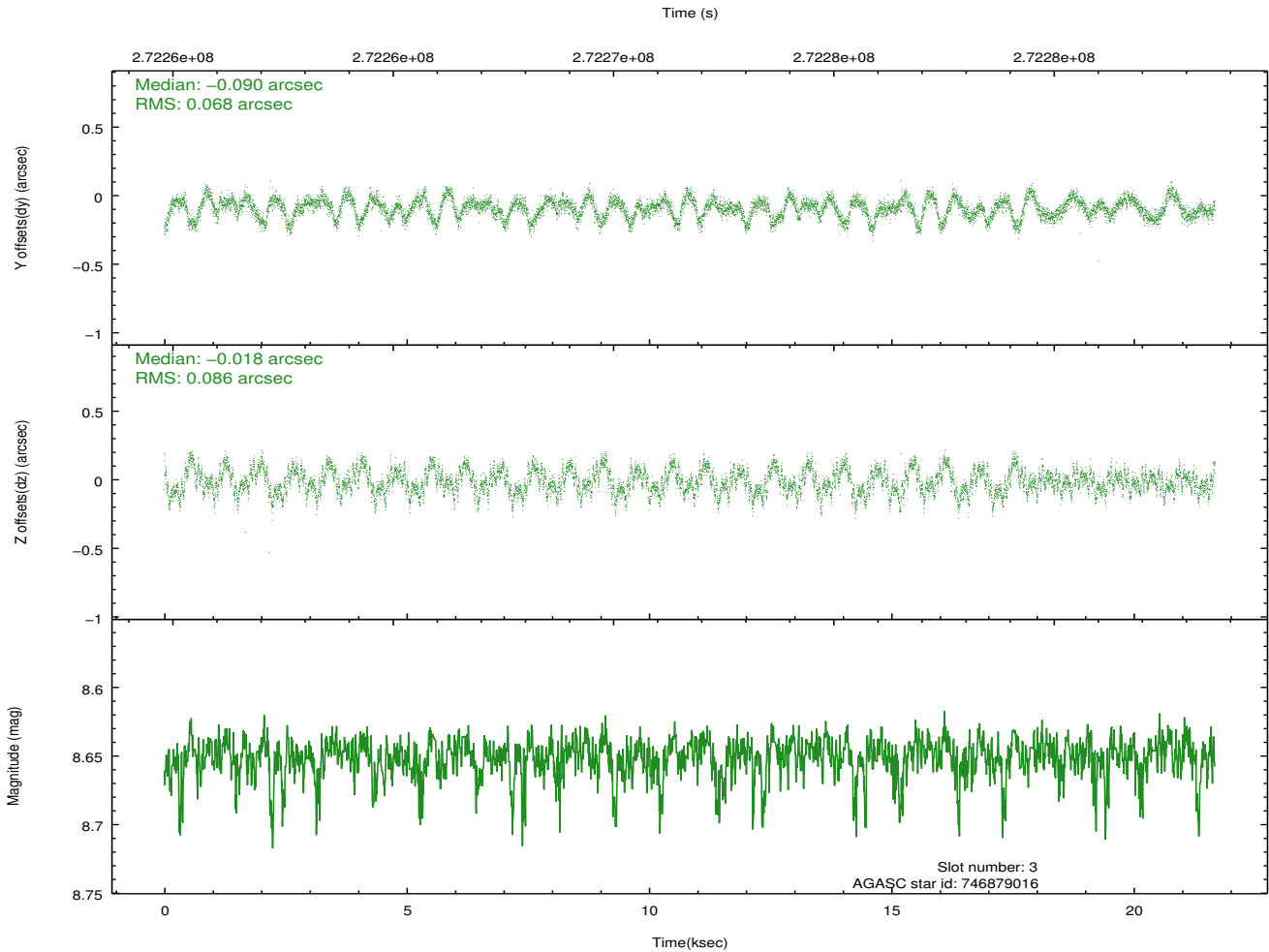
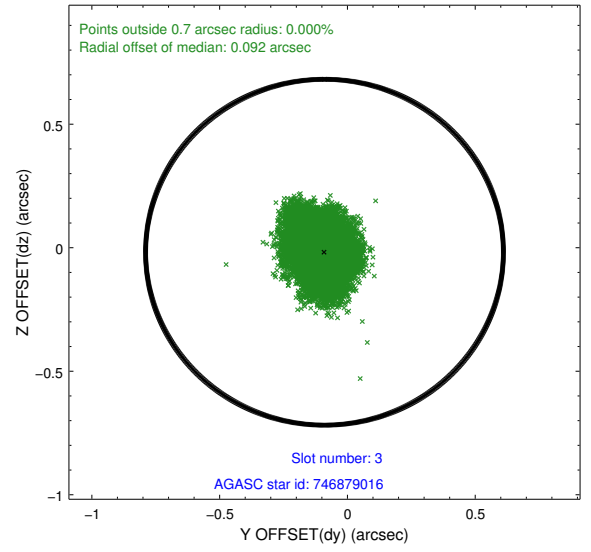
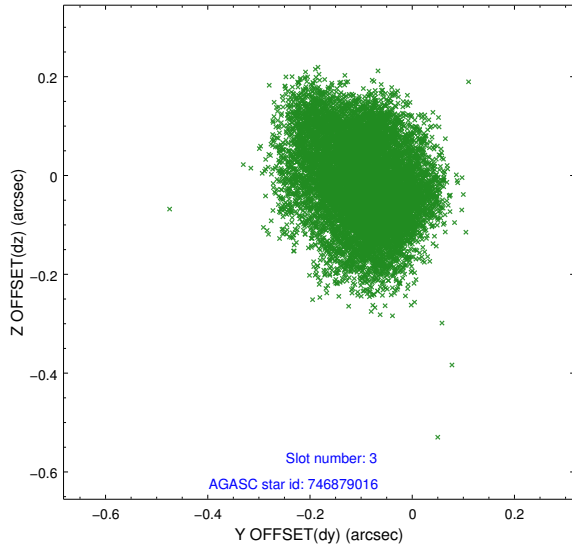


### Slot Statistics

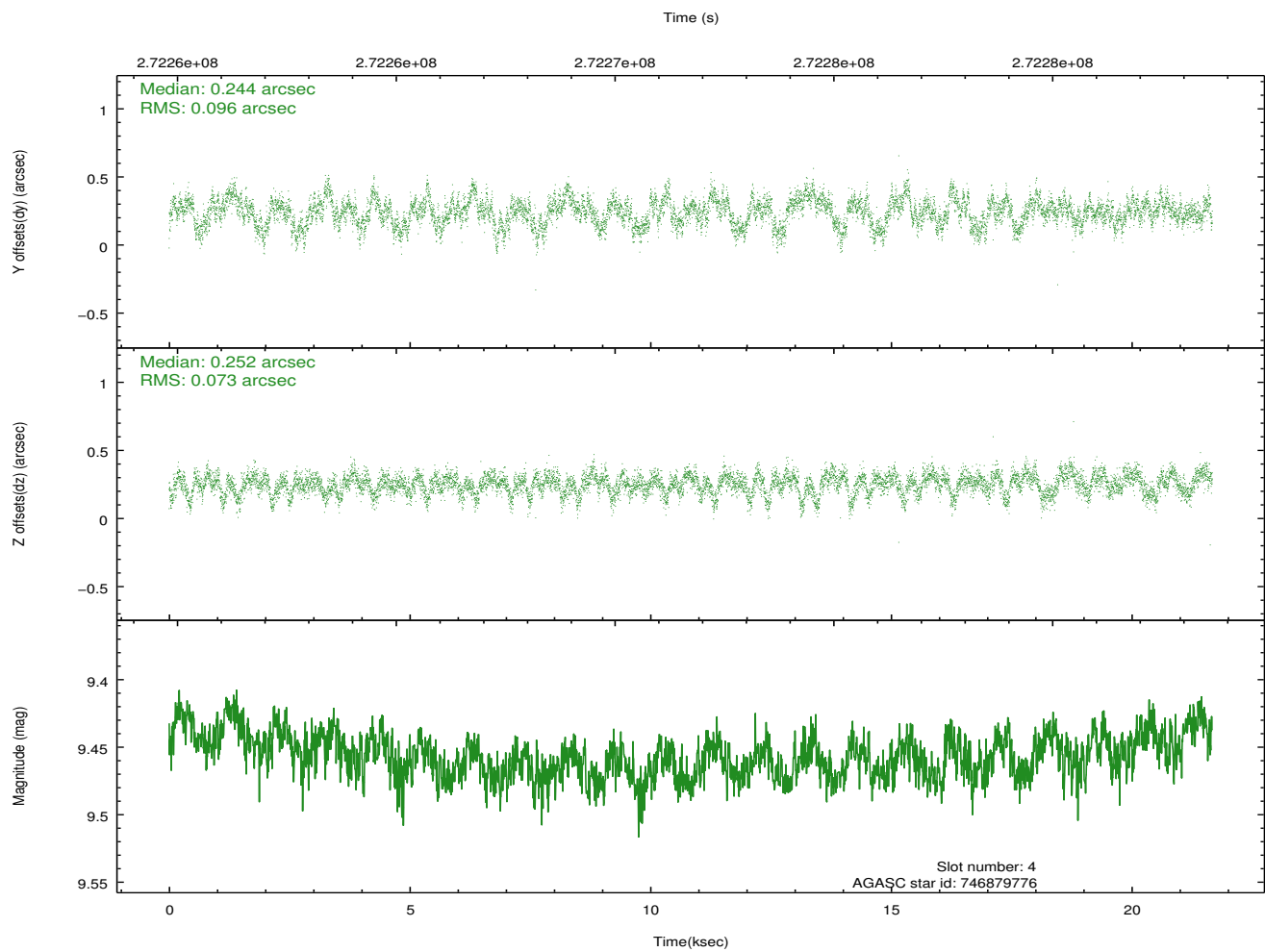
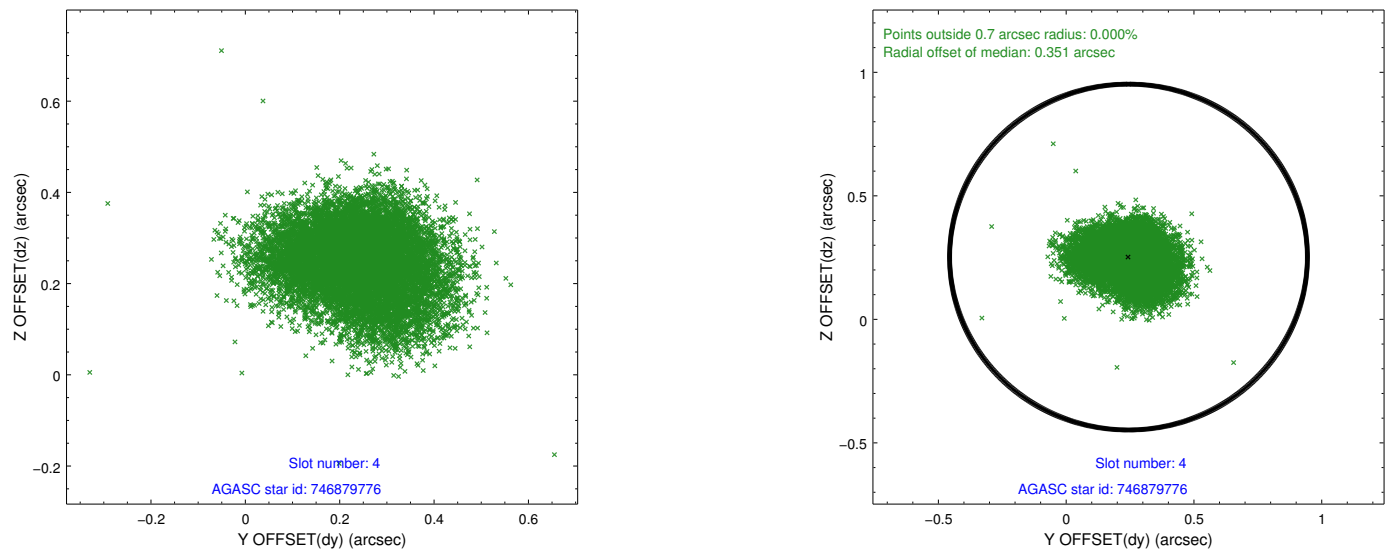
slot	status	id	mag	n_pts	med_dy	med_dz	dr1	dr2	ra	dec	mean_y	mean_z
0	FID	ACIS-S-2	7.11	5285	-0.048	-0.029	0.007	0.012	0.000000	0.000000	-761.81	-1731.70
1	FID	ACIS-S-4	7.21	5283	0.164	0.031	0.009	0.015	0.000000	0.000000	2151.56	176.75
2	FID	ACIS-S-5	7.23	5283	-0.147	0.007	0.007	0.013	0.000000	0.000000	-1814.59	170.49
3	GUIDE	746879016	8.65	10561	-0.090	-0.018	0.119	0.184	276.761226	-11.412176	-978.52	-1373.81
4	GUIDE	746879776	9.46	10563	0.244	0.252	0.129	0.208	277.480059	-12.389434	2188.56	1586.20
5	GUIDE	746885112	8.09	10569	-0.047	-0.064	0.114	0.168	276.677725	-11.356892	-1137.67	-1691.59
6	GUIDE	746982800	8.62	10568	-0.096	-0.077	0.119	0.182	277.693854	-11.796819	-22.99	2064.10
7	GUIDE	746890112	10.32	10276	-0.016	-0.103	0.365	0.539	277.115647	-12.397050	2377.86	318.77

## 2.4 Star Slots

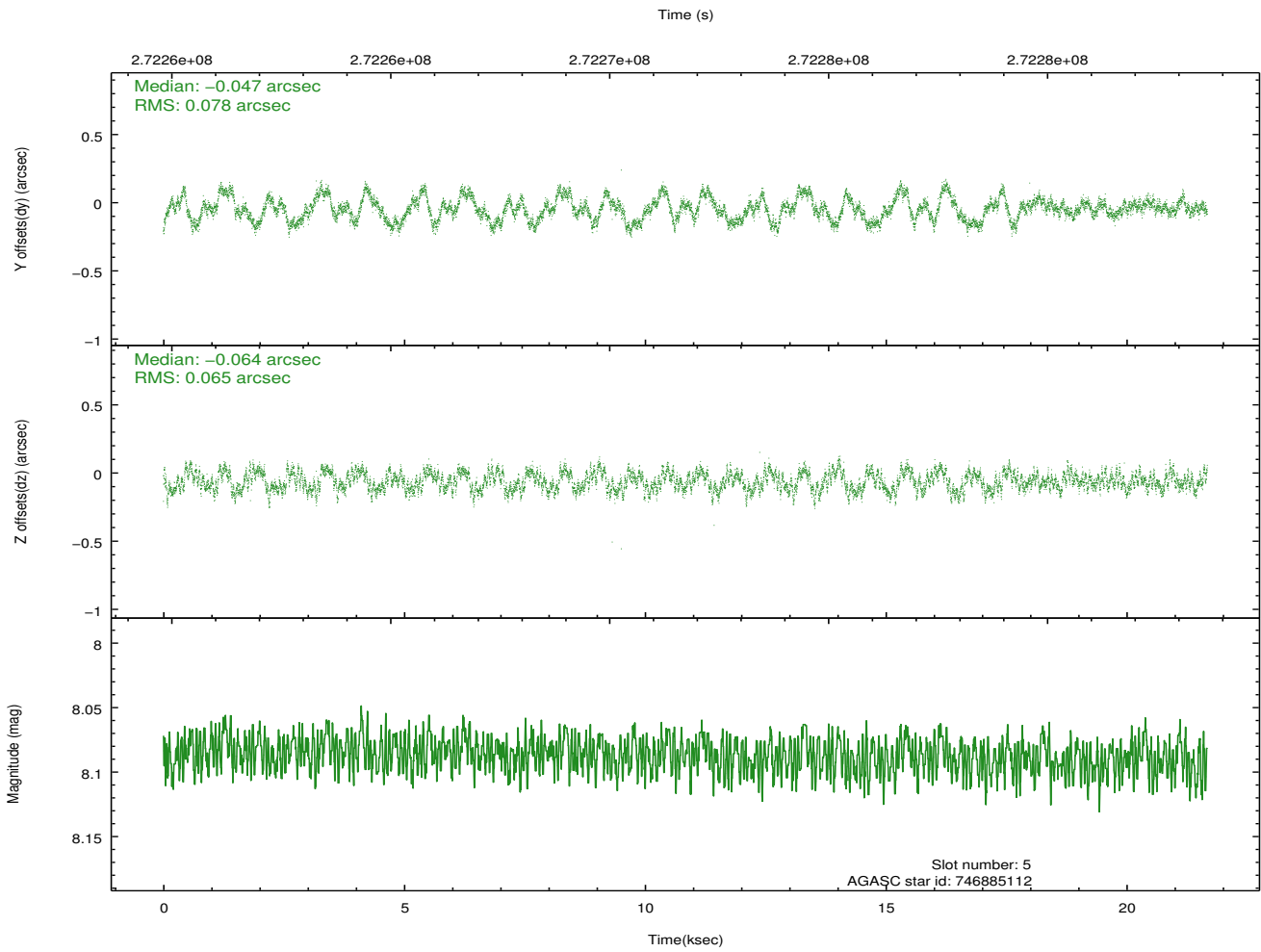
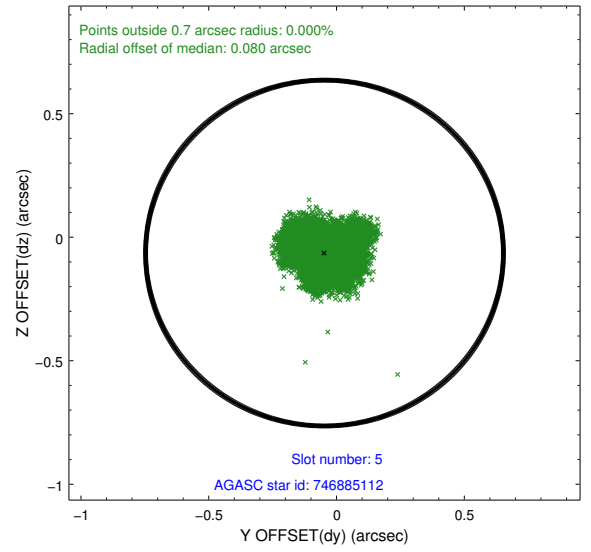
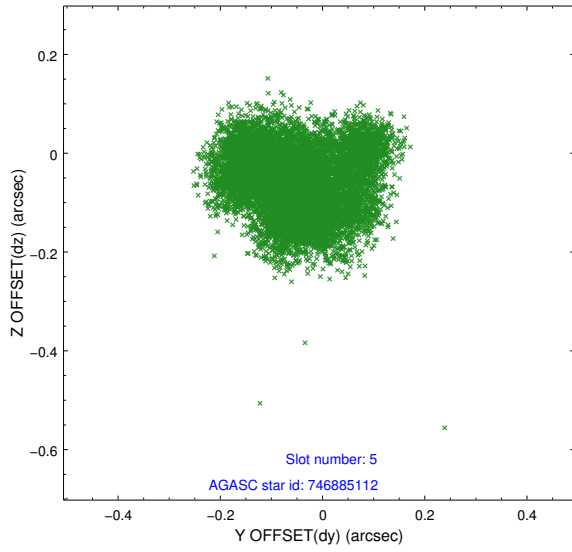
### 2.4.1 Slot 3



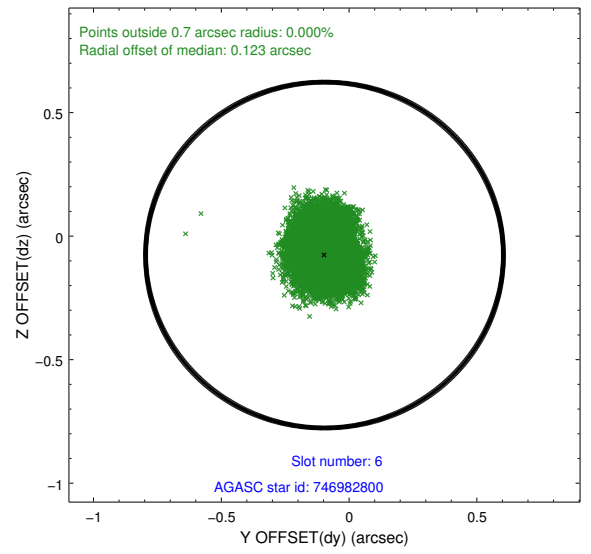
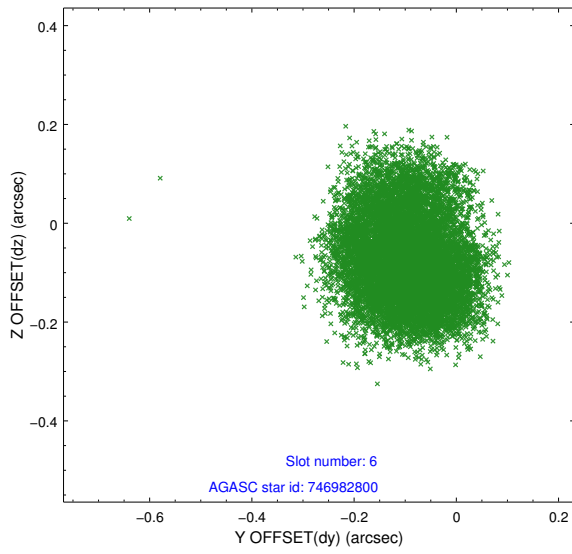
## 2.4.2 Slot 4



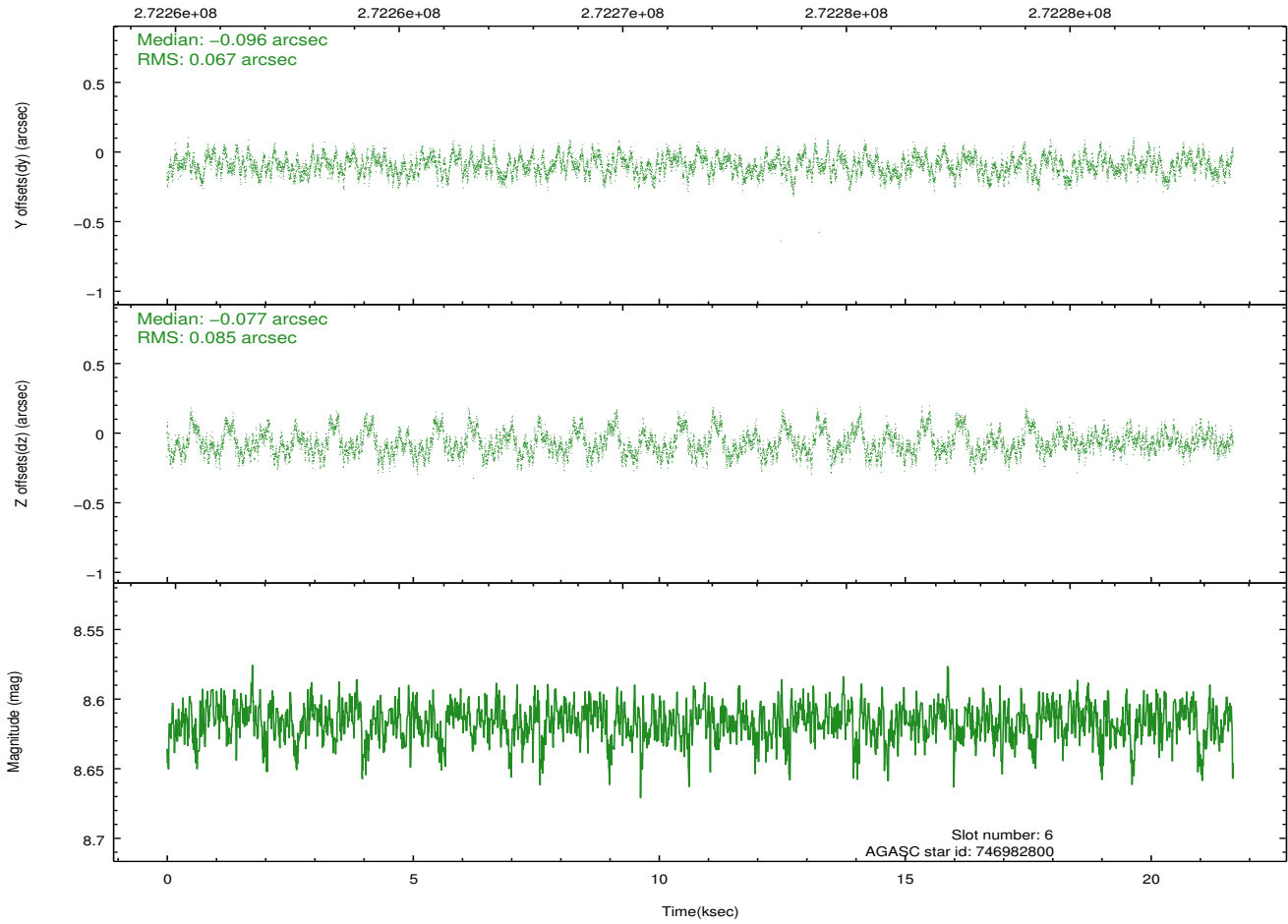
### 2.4.3 Slot 5



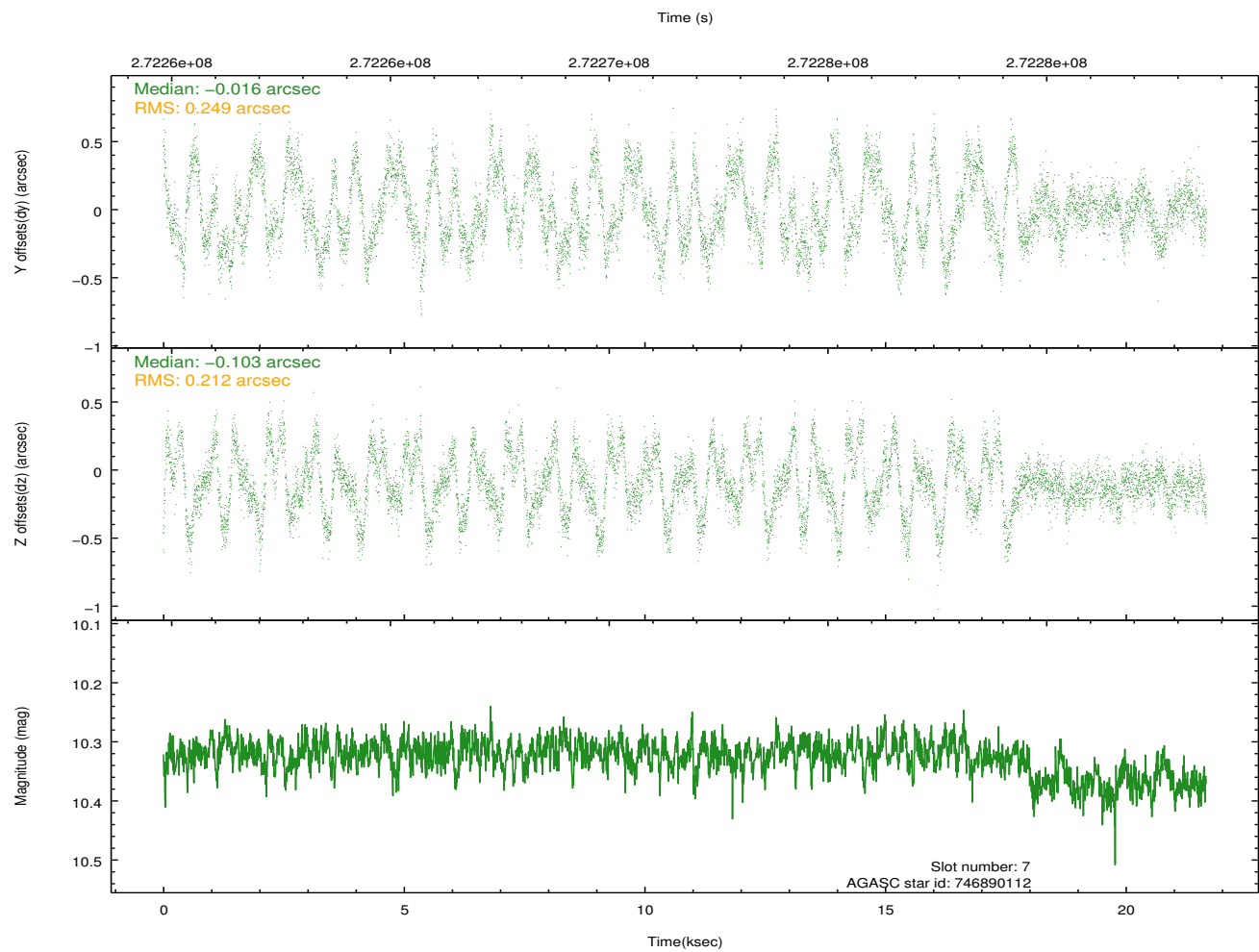
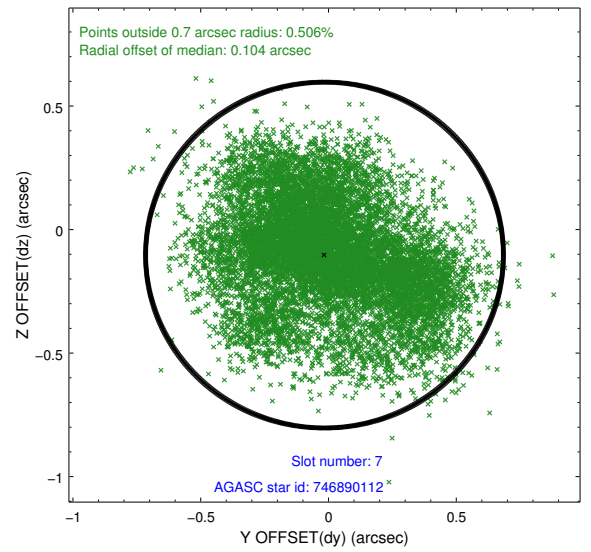
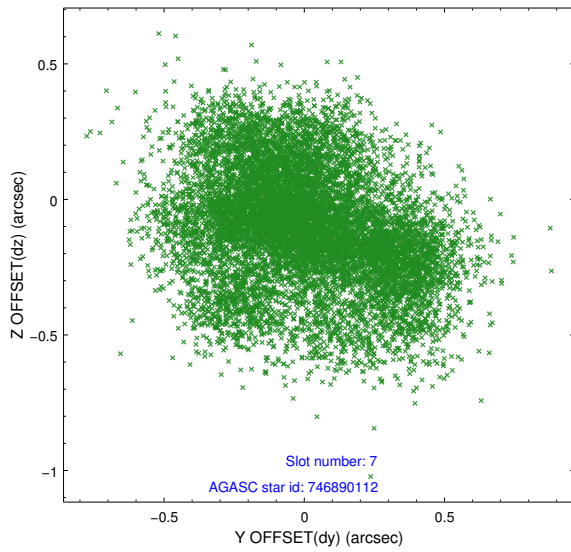
### 2.4.4 Slot 6



Time (s)

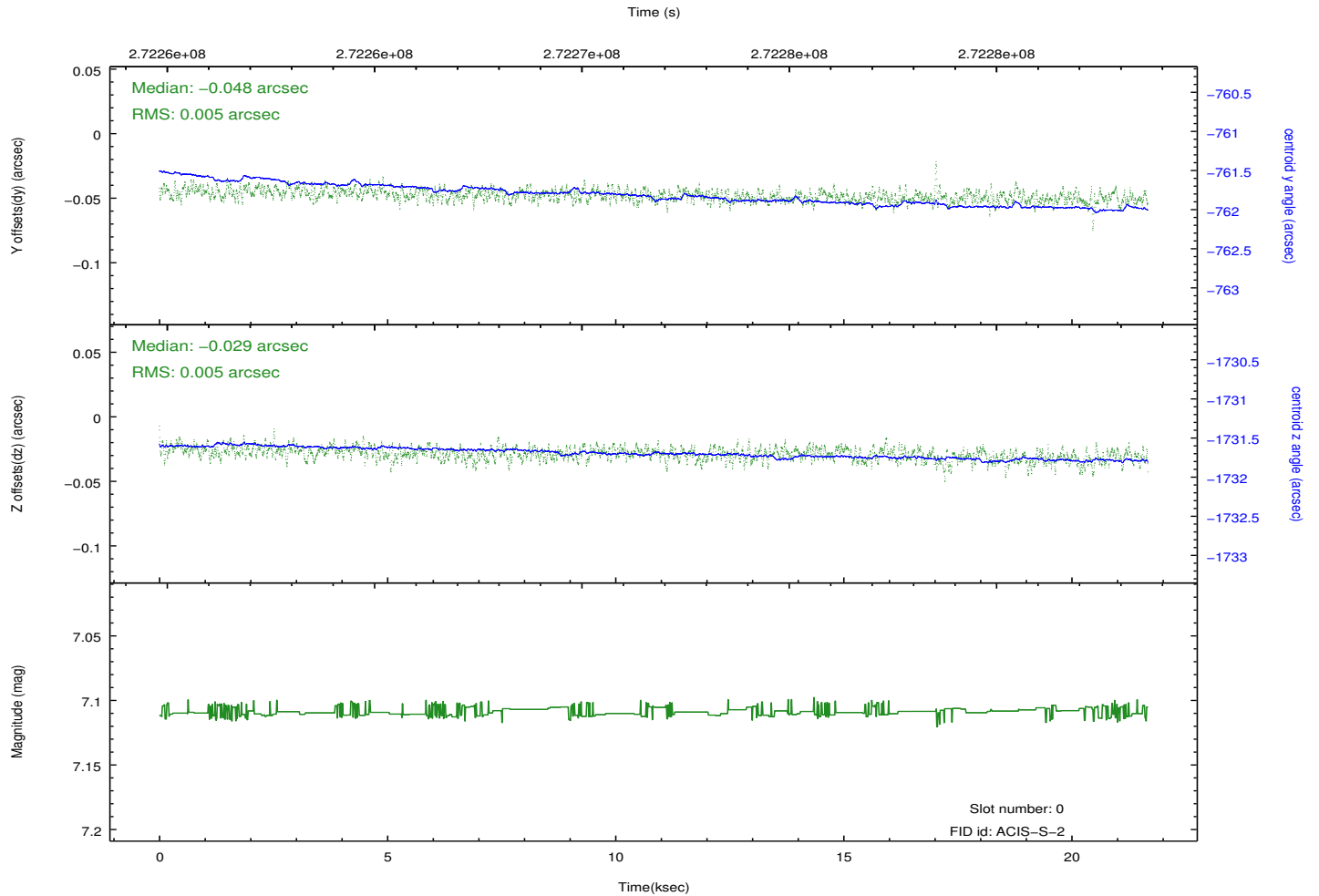
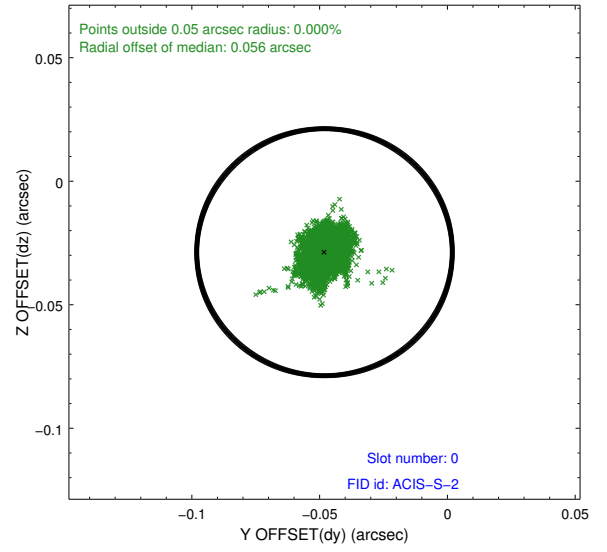
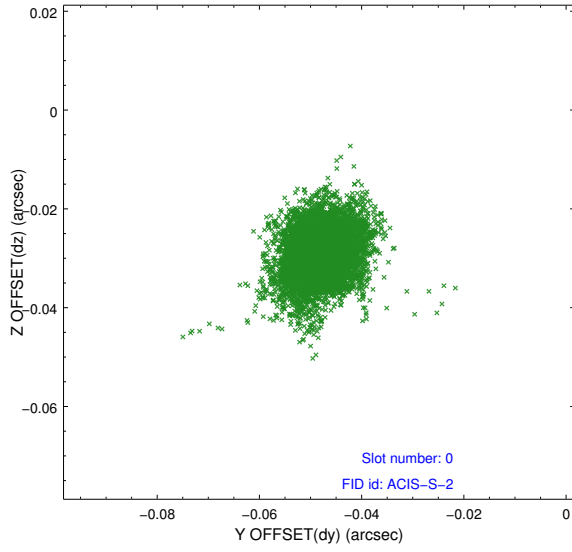


### 2.4.5 Slot 7

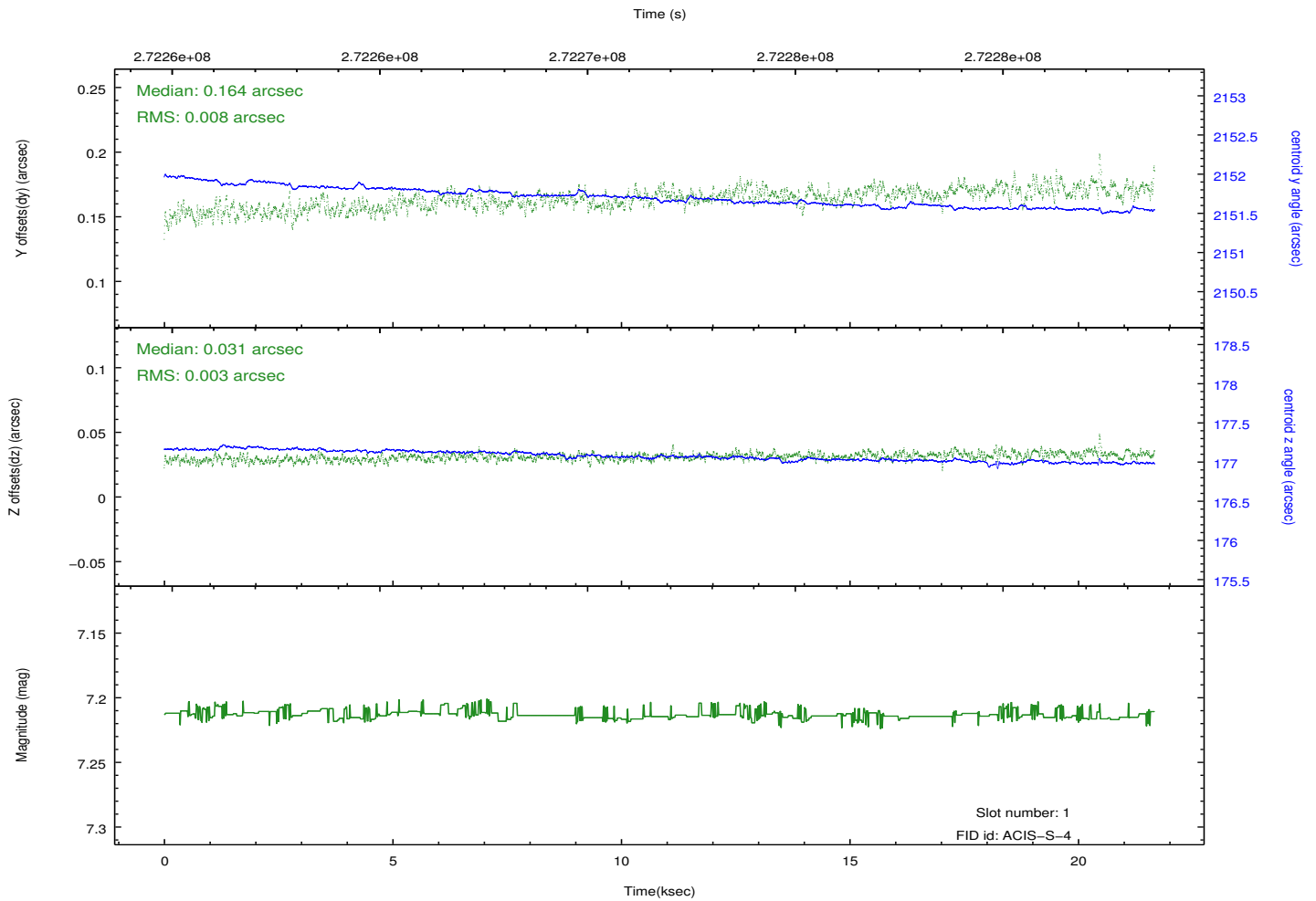
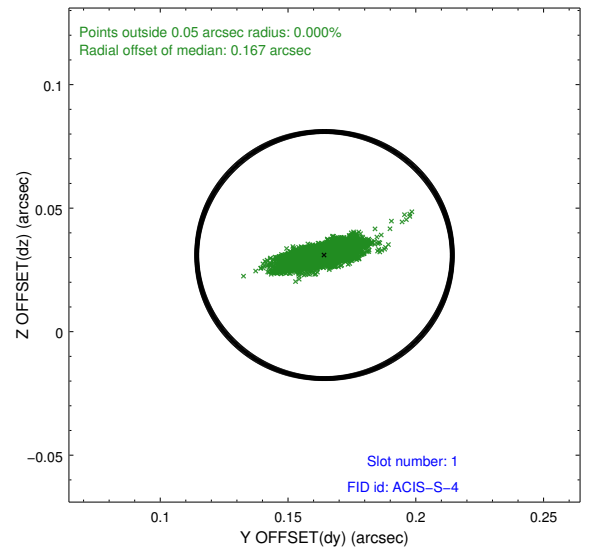
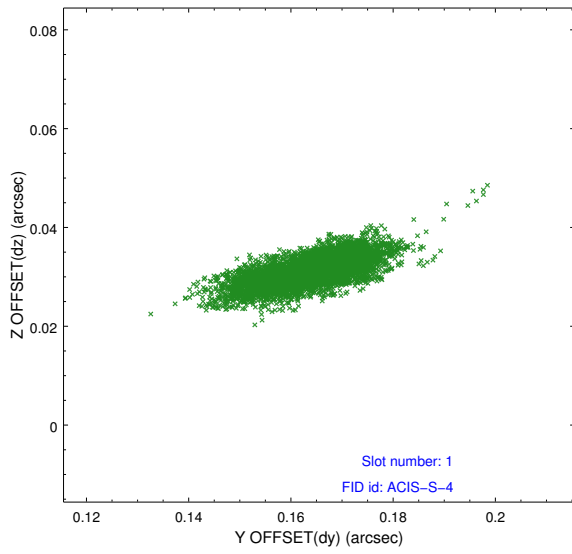


## 2.5 FID Slots

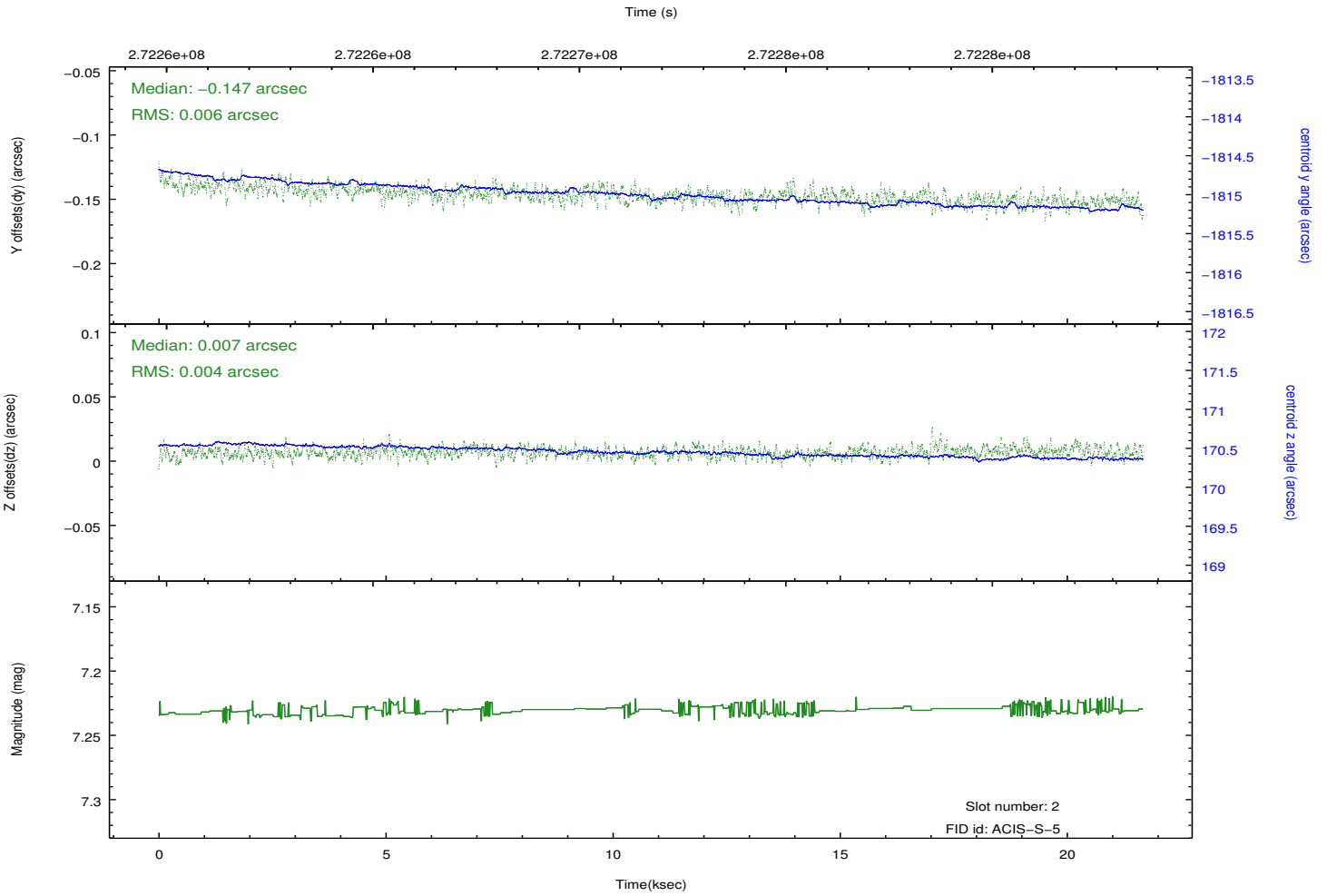
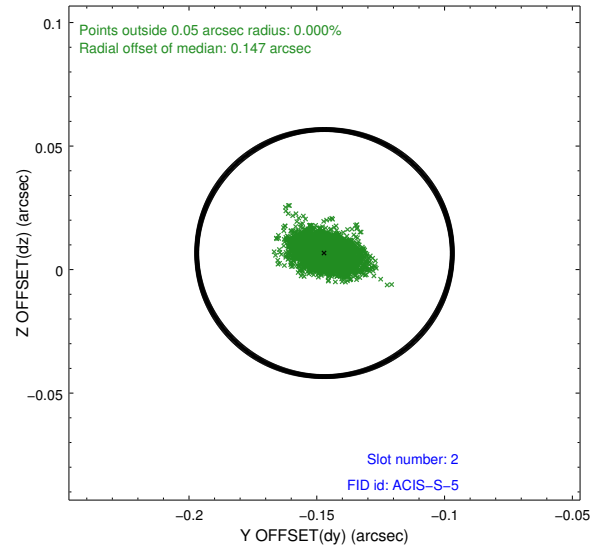
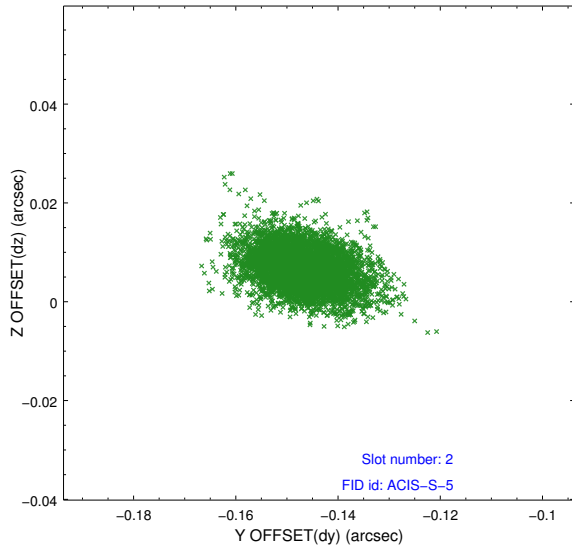
### 2.5.1 Slot 0



## 2.5.2 Slot 1



### 2.5.3 Slot 2



# A Summary

## A.1 Status

V&V Scientist	Jen Lauer
V&V Date (YYYY-MM-DD)	2012.04.08
V&V Edition	1
V&V Disposition and Status	OK
V&V Charge Time	20.9535999

## A.2 Comments