

# V&V Reference Report

## L2 ASCDS Version : 8.4.3.1

Observation 6685 - L2 Version 2  
Chandra X-Ray Center

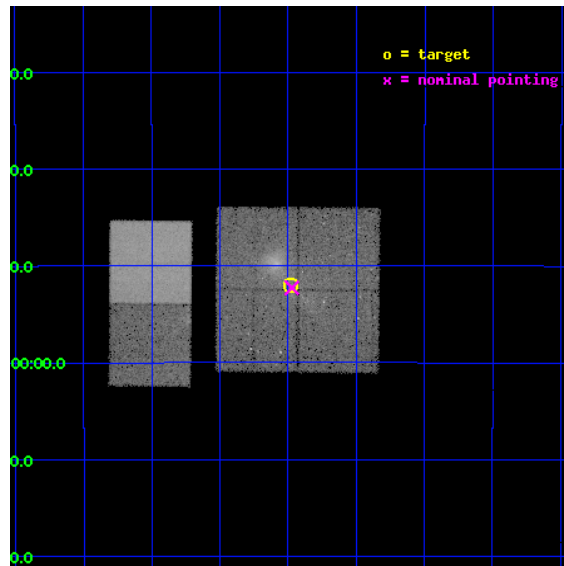
L2 Processing Date : Apr 9 2012

## Contents

<b>1</b>	<b>Front</b>	<b>2</b>
<b>2</b>	<b>OBI</b>	<b>3</b>
2.1	OBI . . . . .	3
2.1.1	Images . . . . .	3
2.1.2	Bias . . . . .	3
2.1.3	Parameters . . . . .	4
2.1.4	Events . . . . .	4
2.2	Compared Parameters . . . . .	5
2.3	Aspect . . . . .	6
2.4	Star Slots . . . . .	9
2.4.1	Slot 3 . . . . .	9
2.4.2	Slot 4 . . . . .	10
2.4.3	Slot 5 . . . . .	11
2.4.4	Slot 6 . . . . .	12
2.4.5	Slot 7 . . . . .	13
2.5	FID Slots . . . . .	14
2.5.1	Slot 0 . . . . .	14
2.5.2	Slot 1 . . . . .	15
2.5.3	Slot 2 . . . . .	16
<b>A</b>	<b>Summary</b>	<b>17</b>
A.1	Status . . . . .	17
A.2	Comments . . . . .	17

# 1 Front

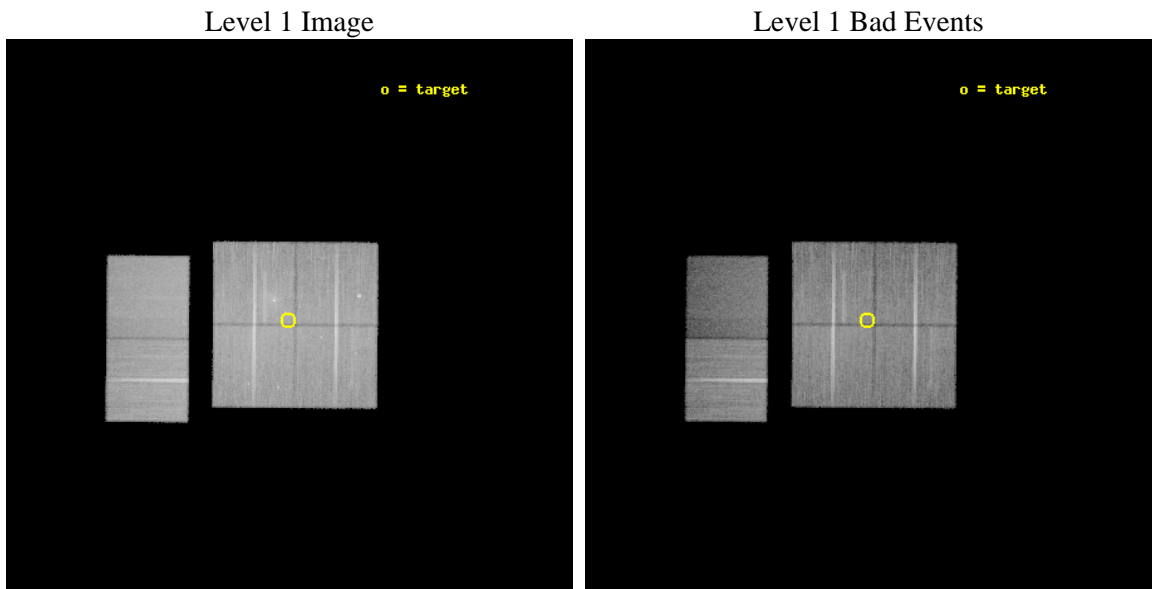
seq_num	500636	Sequence number
obs_id	6685	Observation id
title	G12.7-0.0: A New Supernova Remnant with a Luminous Central X-Ray Source	Proposal title
observer	Prof. David Helfand	Principal investigator
object	G12.7-0.0	Source name
dtcycle	0	&#160
cycle	P	events from which exps? Prim/Second/Both
ra_targ	273.37	Observer's specified target RA [deg]
dec_targ	-17.8669	Observer's specified target Dec [deg]
ra_nom	273.36813322778	Nominal RA [deg]
dec_nom	-17.871214106509	Nominal Dec [deg]
roll_nom	270.46292322645	Nominal Roll [deg]
revision	2	Processing version of data
ontime	29947.605855346	Sum of GTIs [s]
livetime	29568.391237722	Livetime [s]
ontime0	29953.964675844	Sum of GTIs [s]
ontime1	29954.005715847	Sum of GTIs [s]
ontime2	29947.56485498	Sum of GTIs [s]
ontime3	29947.605855346	Sum of GTIs [s]
ontime6	29950.928875625	Sum of GTIs [s]
ontime7	29954.128835857	Sum of GTIs [s]
l2events	214519	Number of level 2 events



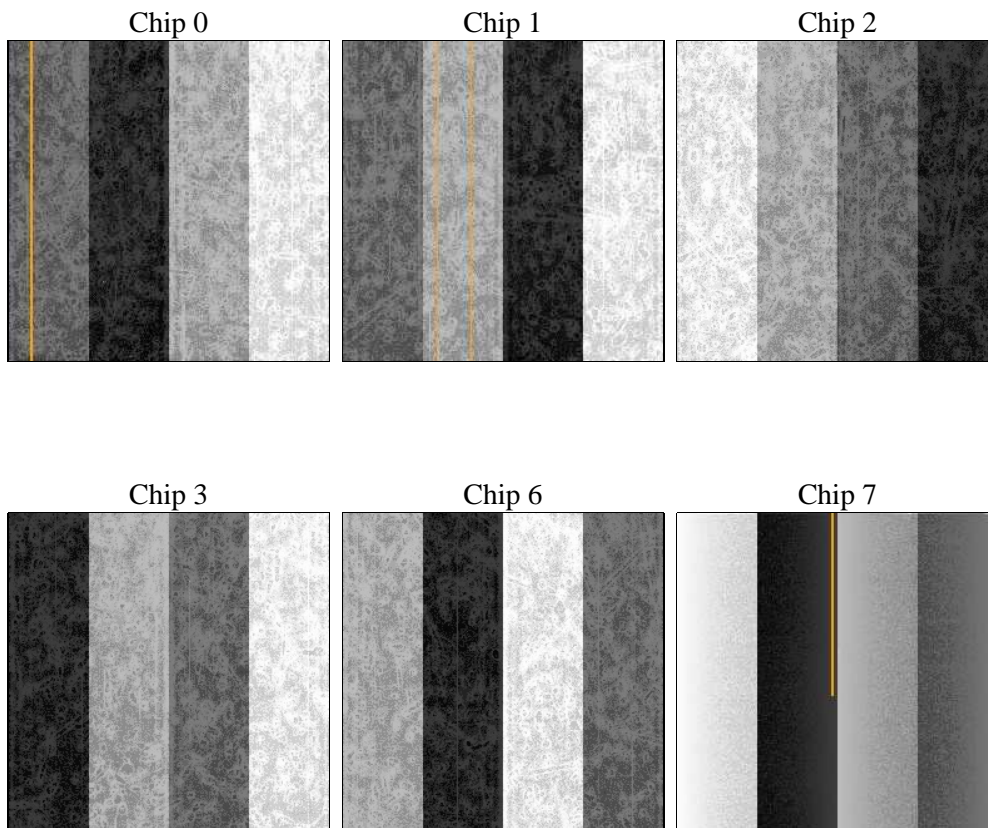
## 2 OBI

### 2.1 OBI

#### 2.1.1 Images



#### 2.1.2 Bias



### 2.1.3 Parameters

obi_num	0	Obi number	sched_exp_time	30000.000000	[s] Scheduled observation exposure time
ascdsver	8.4.3.1	Processing system revision	ontime	29947.605855346	Sum of GTIs [s]
caldbver	4.4.9	&#160	ontime0	29953.964675844	Sum of GTIs [s]
date	2012-04-09T16:13:16	Date and time of file creation	ontime1	29954.005715847	Sum of GTIs [s]
revision	2	Processing version of data	ontime2	29947.56485498	Sum of GTIs [s]
			ontime3	29947.605855346	Sum of GTIs [s]
			ontime6	29950.928875625	Sum of GTIs [s]
			ontime7	29954.128835857	Sum of GTIs [s]
			l1events	1309986	Number of level 1 events

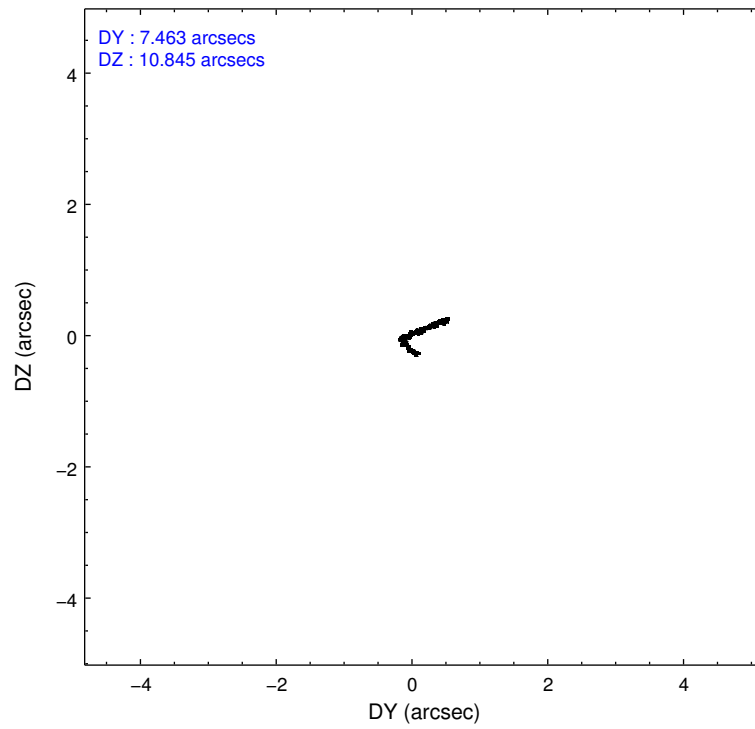
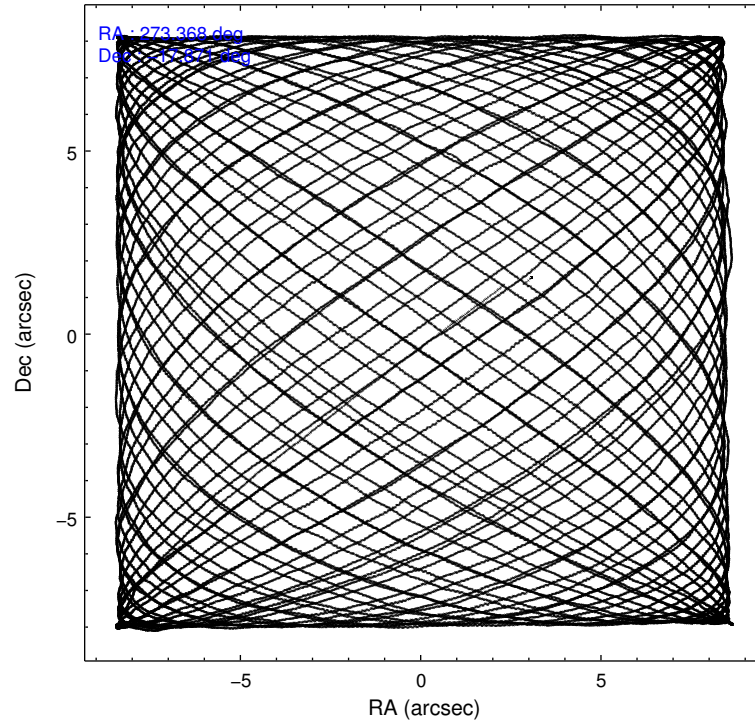
### 2.1.4 Events

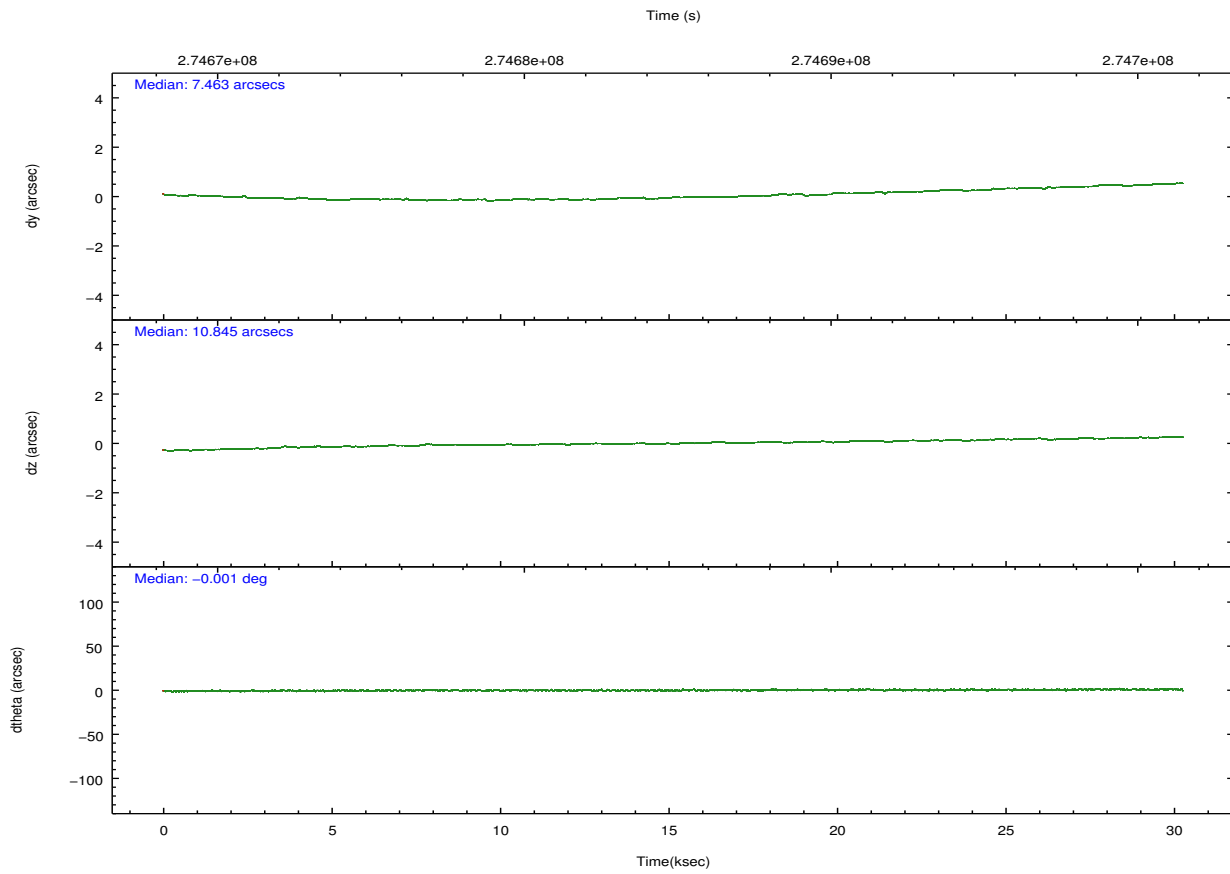
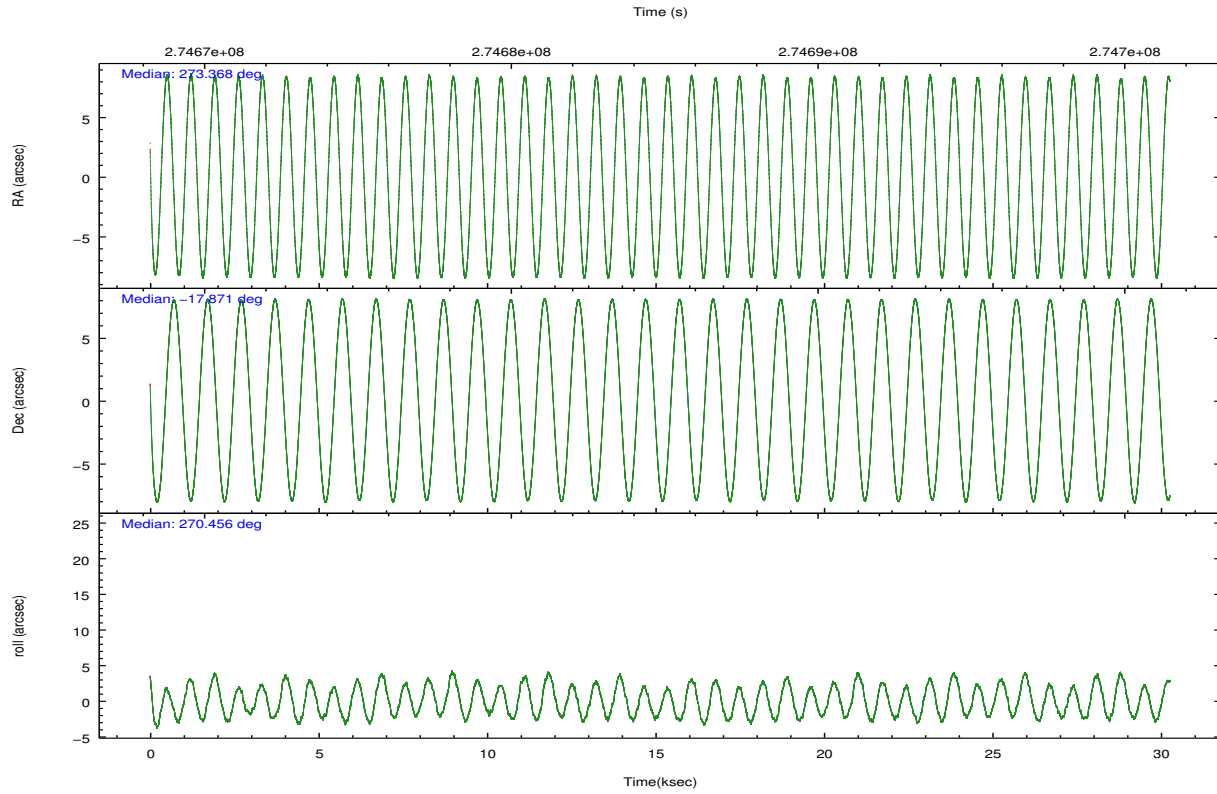
	ccd 0	ccd 1	ccd 2	ccd 3	ccd 6	ccd 7		ccd 0	ccd 1	ccd 2	ccd 3	ccd 6	ccd 7
level 1 events	211607	204098	234554	229992	225489	204246	grade 0 events	11615	13339	12000	17342	9688	10257
rejected events	185763	175565	208967	196209	201393	102532		5%	6%	5%	7%	4%	5%
rejected %	87%	86%	89%	85%	89%	50%	grade 1 events	118	133	143	206	141	209
								0%	0%	0%	0%	0%	0%
							grade 2 events	5498	5358	5213	6068	5148	21772
								2%	2%	2%	2%	2%	10%
							grade 3 events	2537	2752	2279	2892	2512	9760
								1%	1%	0%	1%	1%	4%
							grade 4 events	2327	2563	2437	2873	2308	9938
								1%	1%	1%	1%	1%	4%
							grade 5 events	6118	6879	5715	7333	7503	21722
								2%	3%	2%	3%	3%	10%
							grade 6 events	3873	4530	3662	4618	4444	50013
								1%	2%	1%	2%	1%	24%
							grade 7 events	179521	168544	203105	188660	193745	80575
								84%	82%	86%	82%	85%	39%

## 2.2 Compared Parameters

Parameter	Planned	Actual	Parameter	Planned	Actual
Instrument	ACIS	ACIS	Obspar format version number	7	7
Detector	ACIS-012367	ACIS-012367	Obspar file type	PREDICTED	ACTUAL
Grating	NONE	NONE	Obspar update status	NONE	UPDATED
Data mode	VFAINT	VFAINT	Number of optional ACIS chips dropped	0	0
Observation mode	POINTING	POINTING	On-chip summing requested	N	N
[deg] Pointing RA	273.353452	273.3681332277757	Subarray requested	NONE	NONE
[deg] Pointing Dec	-17.847645	-17.8712141065092	Alternating exposures requested	N	N
[deg] Pointing Roll	270.249732	270.462923226445	[s] Primary exposure time	0.000000	3.2
[mm] SIM focus pos	-0.782348	-0.7809083437167272			
[mm] SIM defocus	0	0.001439871863259334			
[mm] SIM translation stage pos	-233.592463	-233.5874344608287			
[mm] SIM translation stage offset	0	-0.005018542100998502			
[s] Observation start time (MET)	274669979.184000	274668978.63979			
Observation start date	2006-09-15T01:11:54	2006-09-15T00:56:18			
[s] Observation end time (MET)	274699979.184000	274701347.62881			
Observation end date	2006-09-15T09:31:54	2006-09-15T09:55:47			
Read mode	TIMED	TIMED			

## 2.3 Aspect



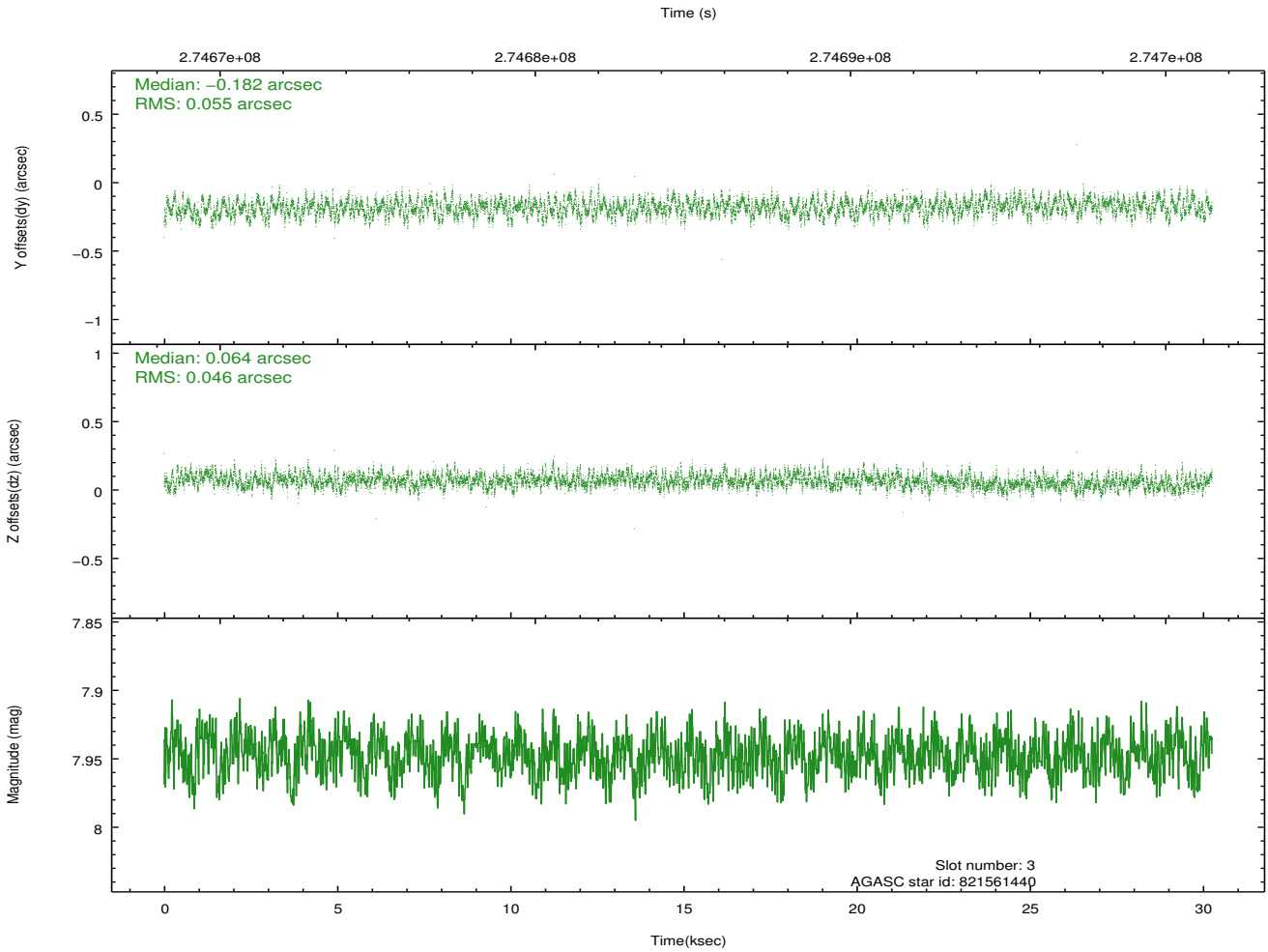
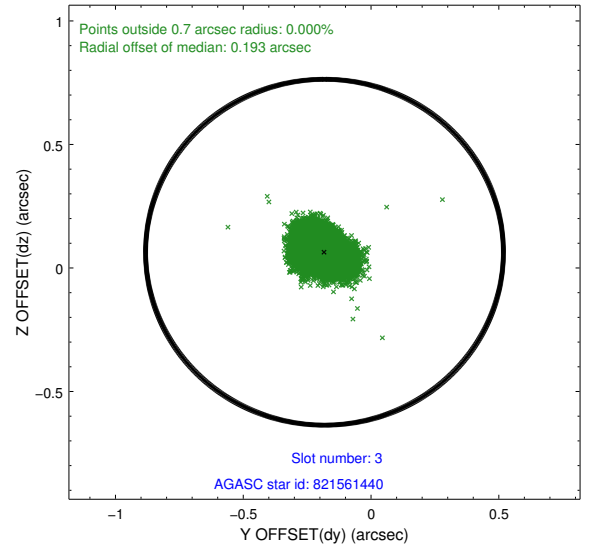
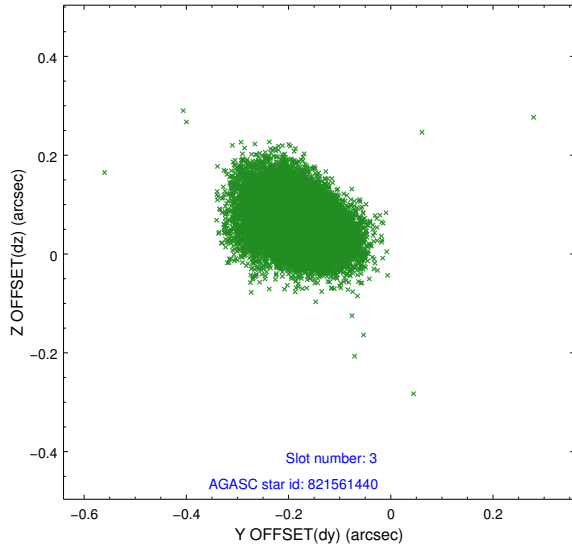


### Slot Statistics

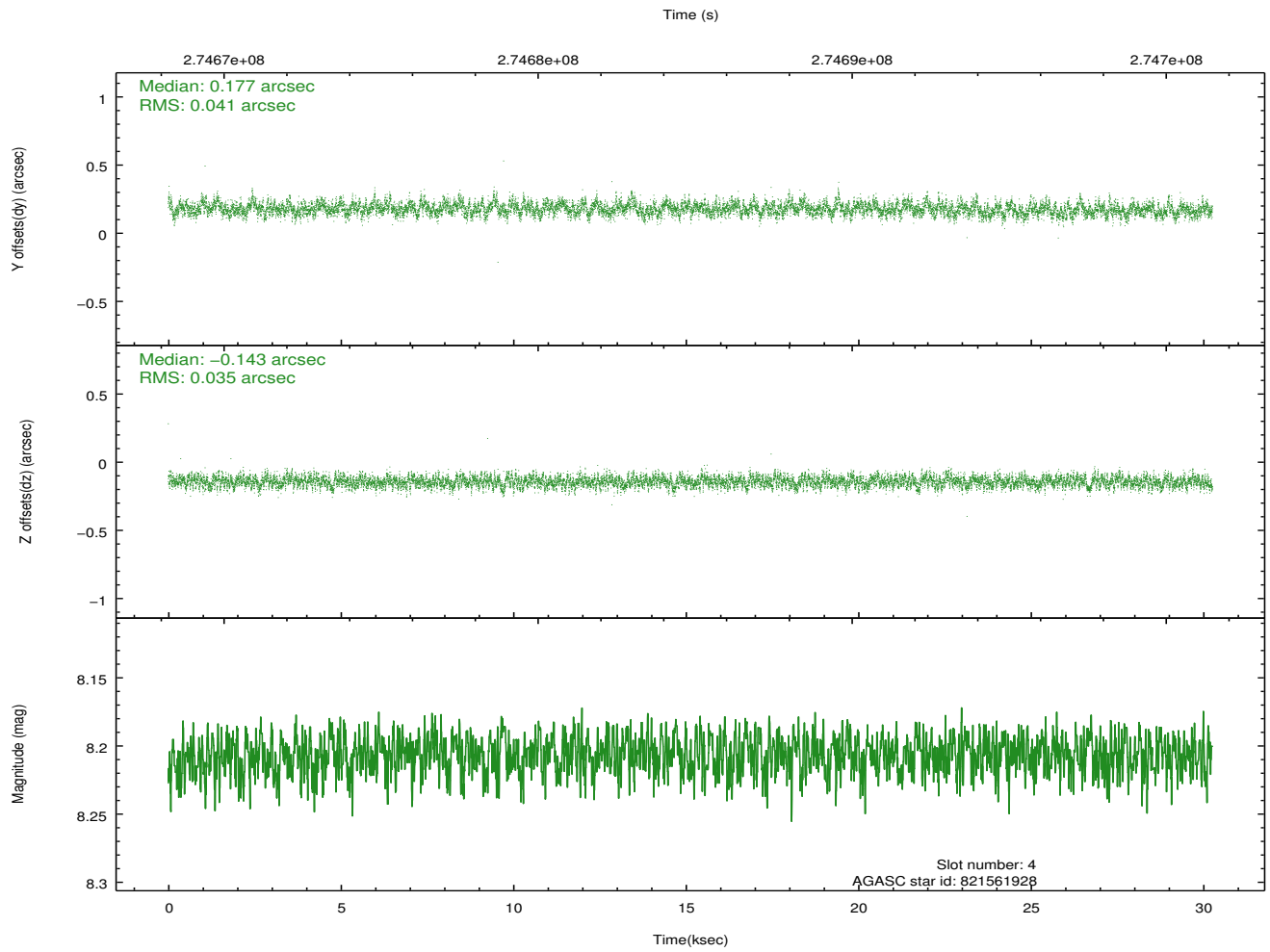
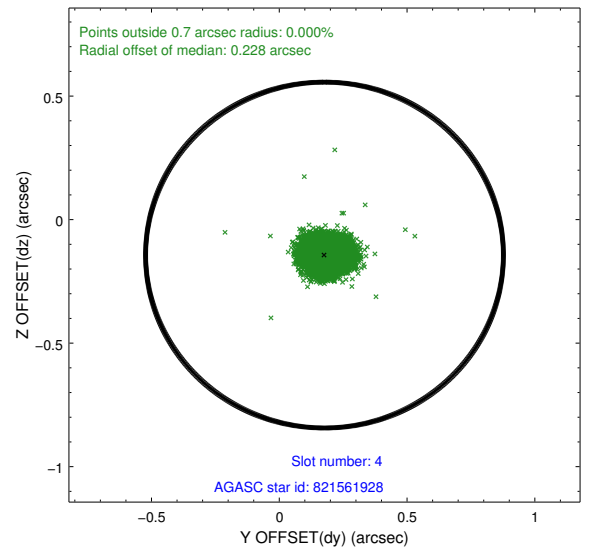
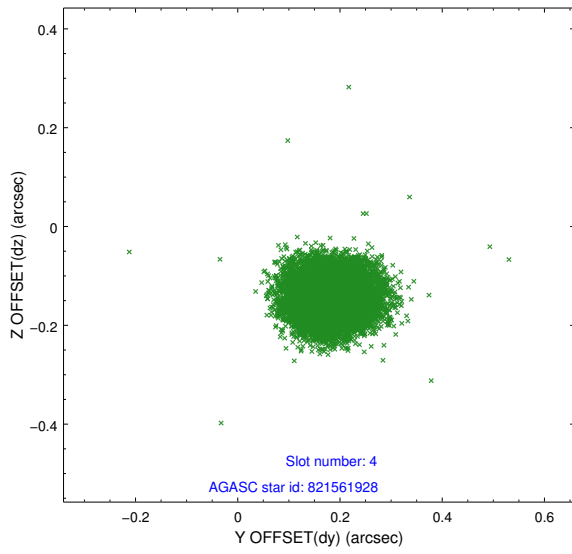
slot	status	id	mag	n_pts	med_dy	med_dz	dr1	dr2	ra	dec	mean_y	mean_z
0	FID	ACIS-I-1	7.24	7381	0.045	-0.051	0.009	0.015	0.000000	0.000000	932.17	-834.40
1	FID	ACIS-I-5	7.23	7382	-0.184	0.048	0.008	0.014	0.000000	0.000000	-1816.11	1063.17
2	FID	ACIS-I-6	7.25	7382	0.048	0.074	0.009	0.014	0.000000	0.000000	397.66	1707.76
3	GUIDE	821561440	7.95	14763	-0.182	0.064	0.076	0.123	273.991252	-17.607934	-849.91	2192.29
4	GUIDE	821561928	8.21	14755	0.177	-0.143	0.057	0.092	273.412393	-18.388173	1947.16	193.20
5	GUIDE	821575560	8.15	14762	0.256	-0.225	0.089	0.149	272.682521	-18.484686	2288.58	-2300.67
6	GUIDE	821570064	6.63	14763	-0.310	0.112	0.052	0.083	273.185111	-17.414521	-1561.32	-571.61
7	GUIDE	821560088	8.75	14759	0.061	0.191	0.060	0.099	273.864625	-18.357017	1843.80	1739.08

## 2.4 Star Slots

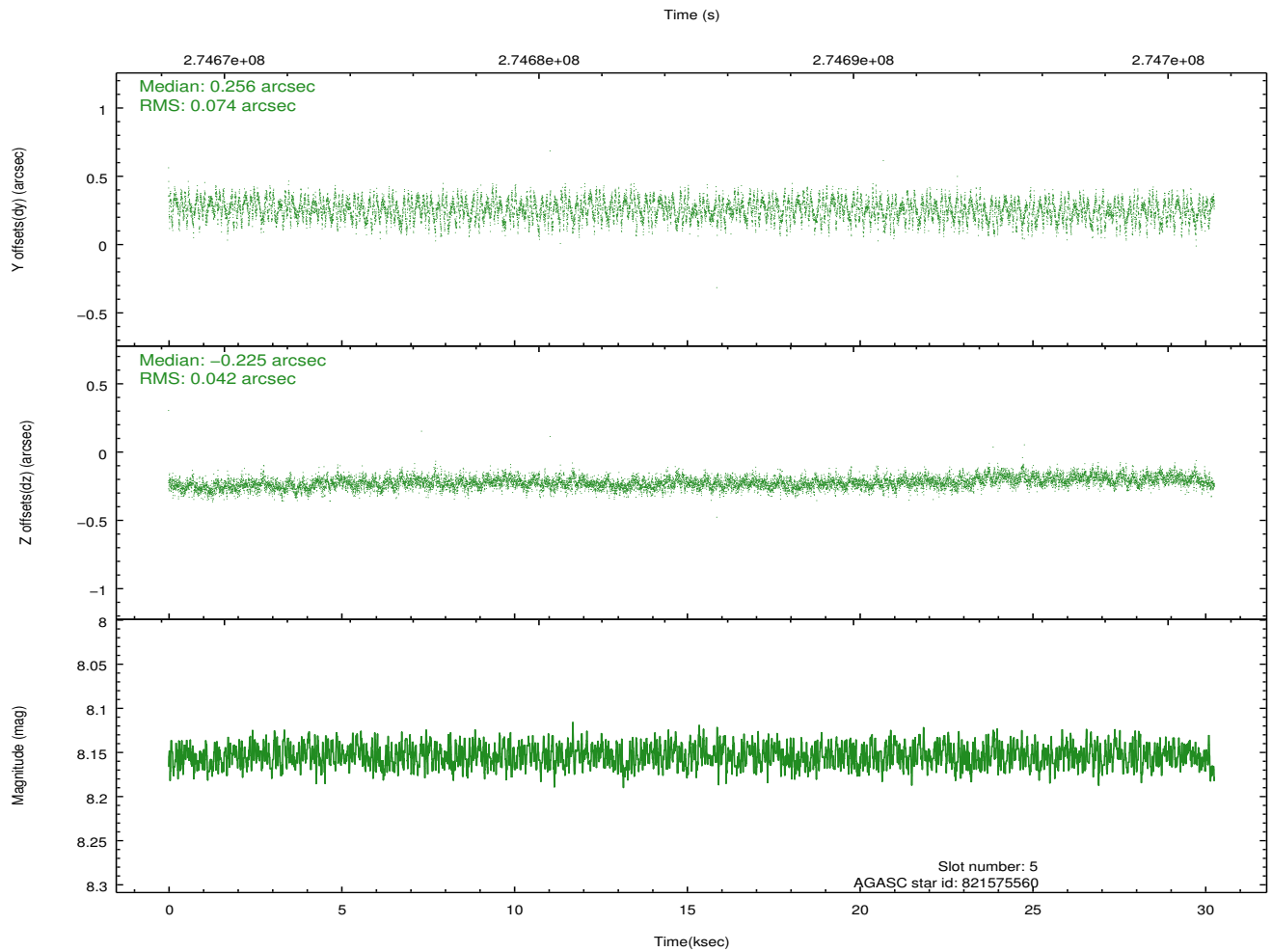
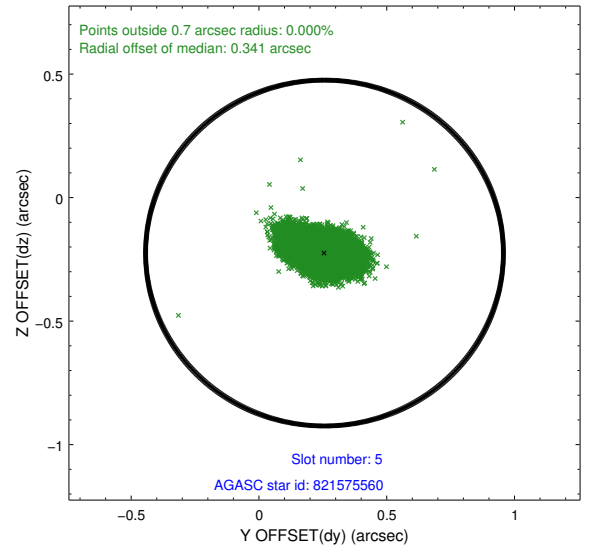
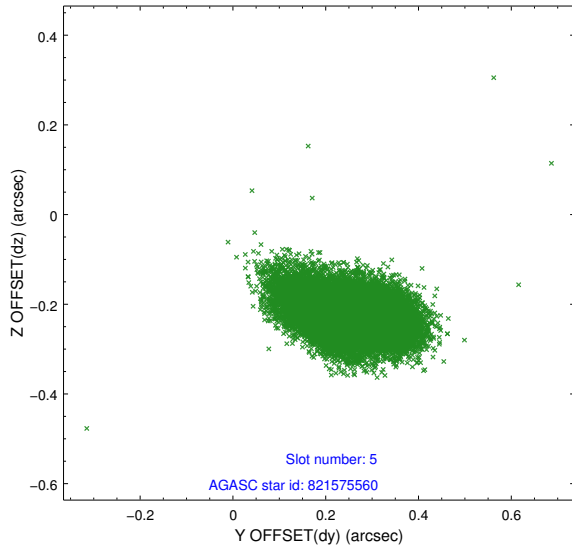
### 2.4.1 Slot 3



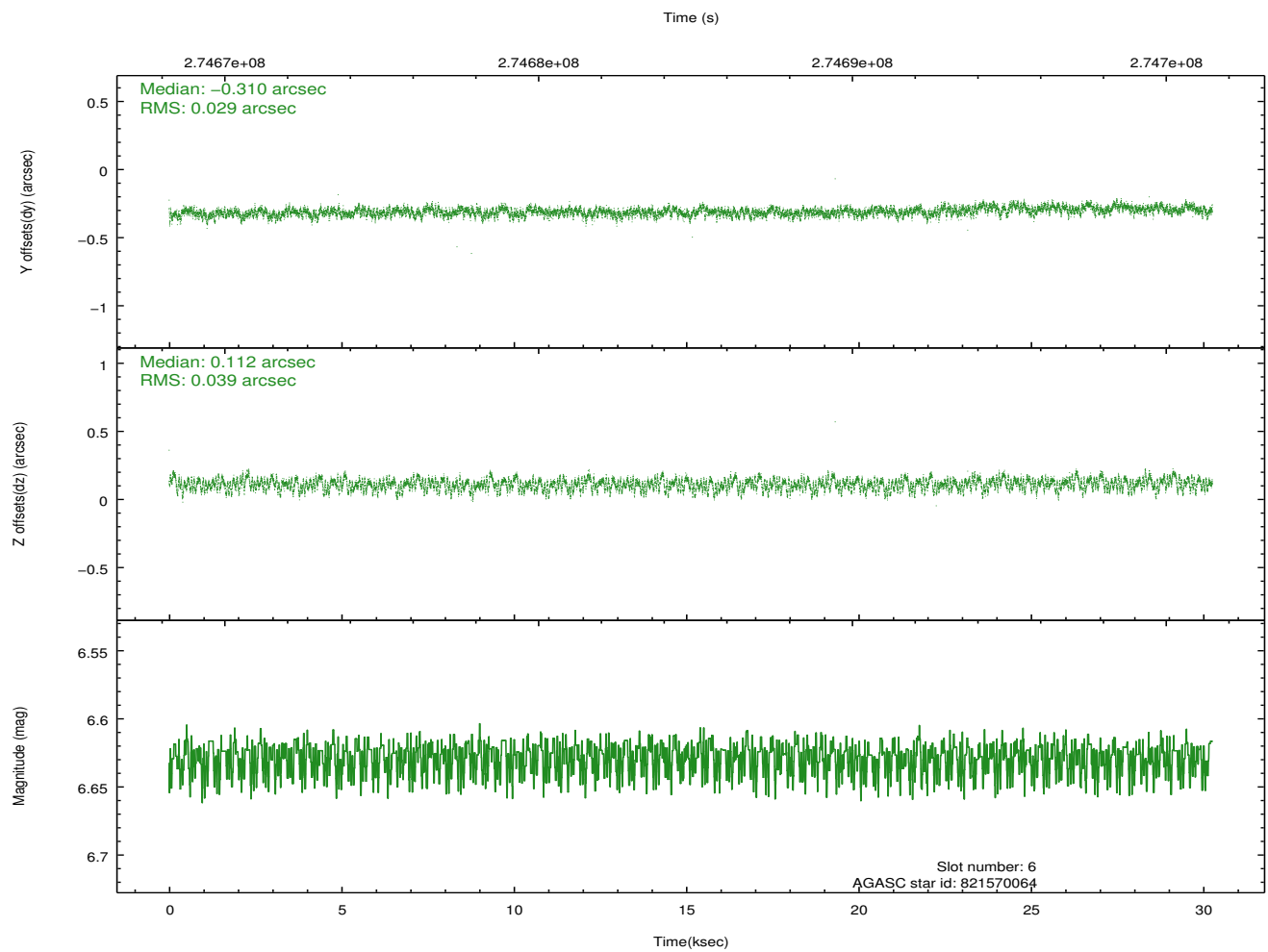
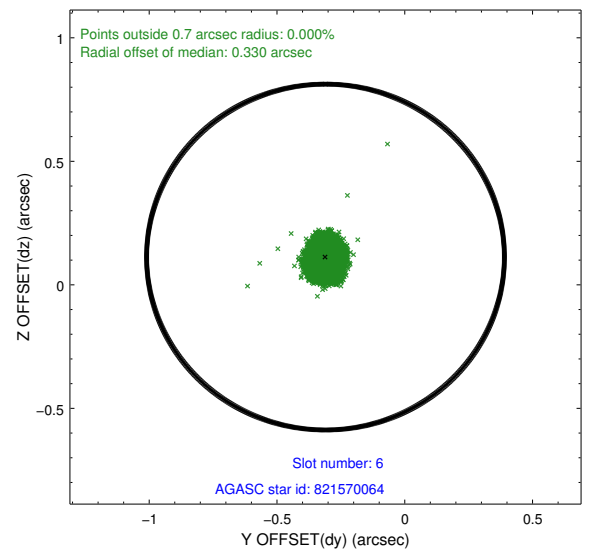
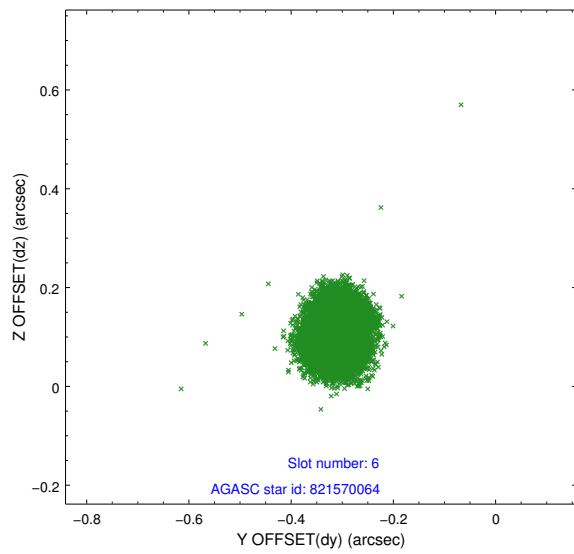
## 2.4.2 Slot 4



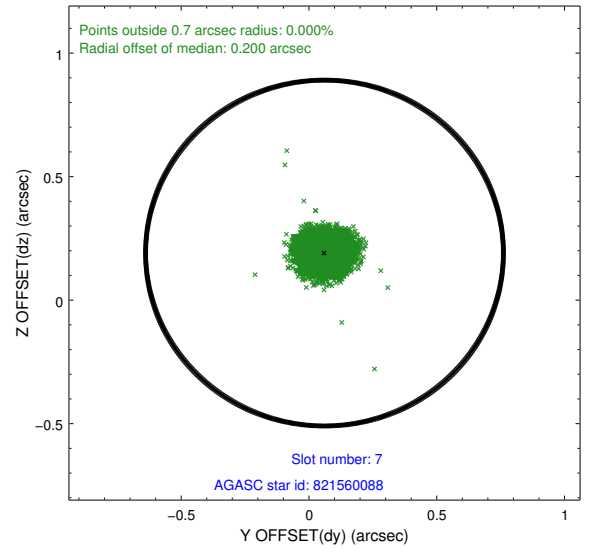
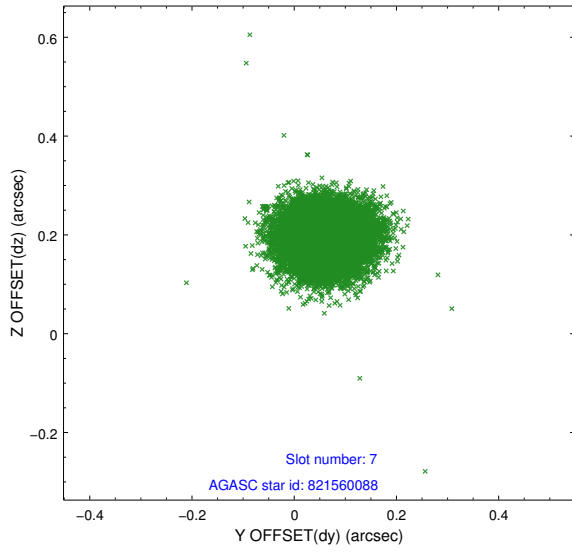
### 2.4.3 Slot 5



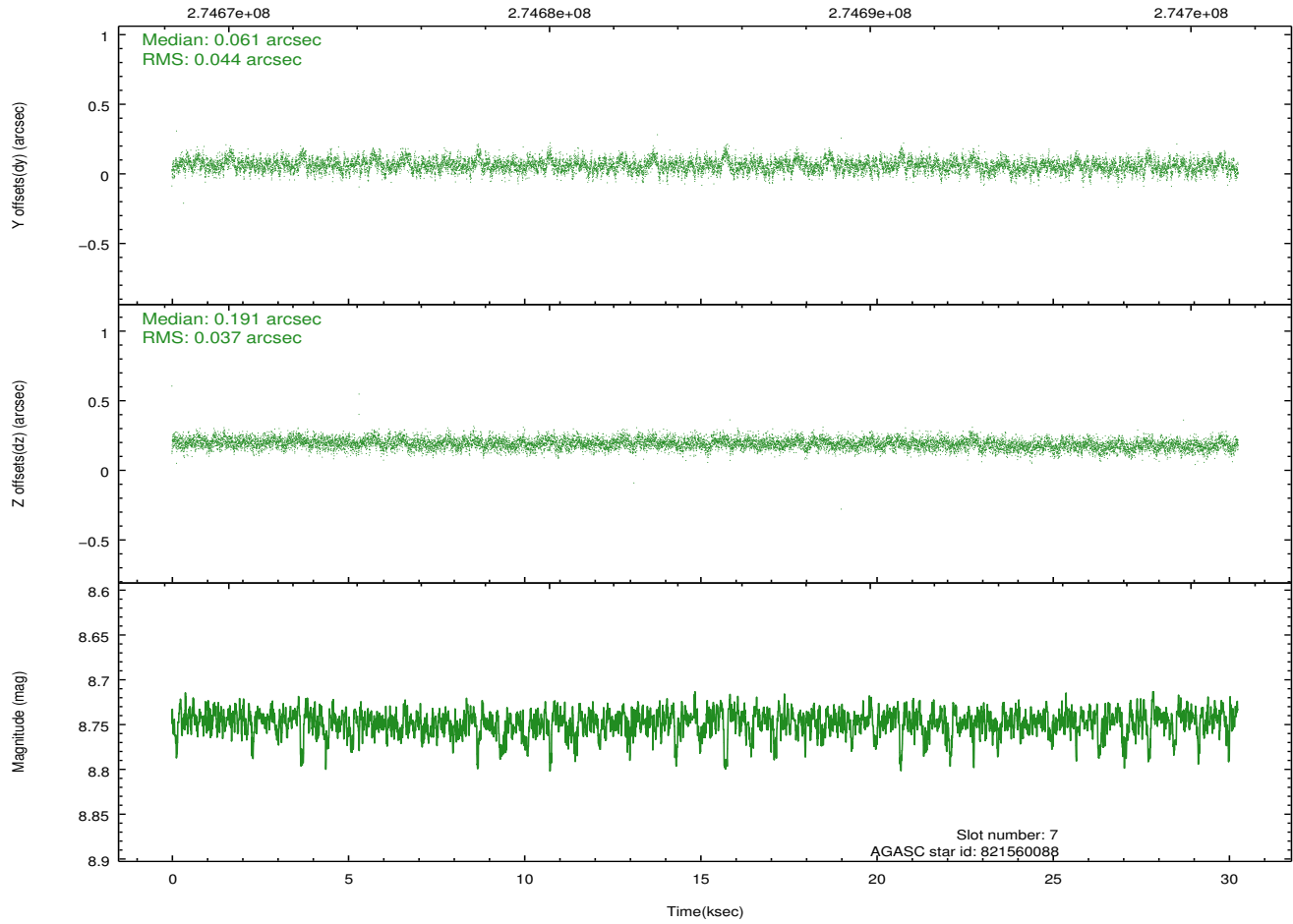
## 2.4.4 Slot 6



### 2.4.5 Slot 7

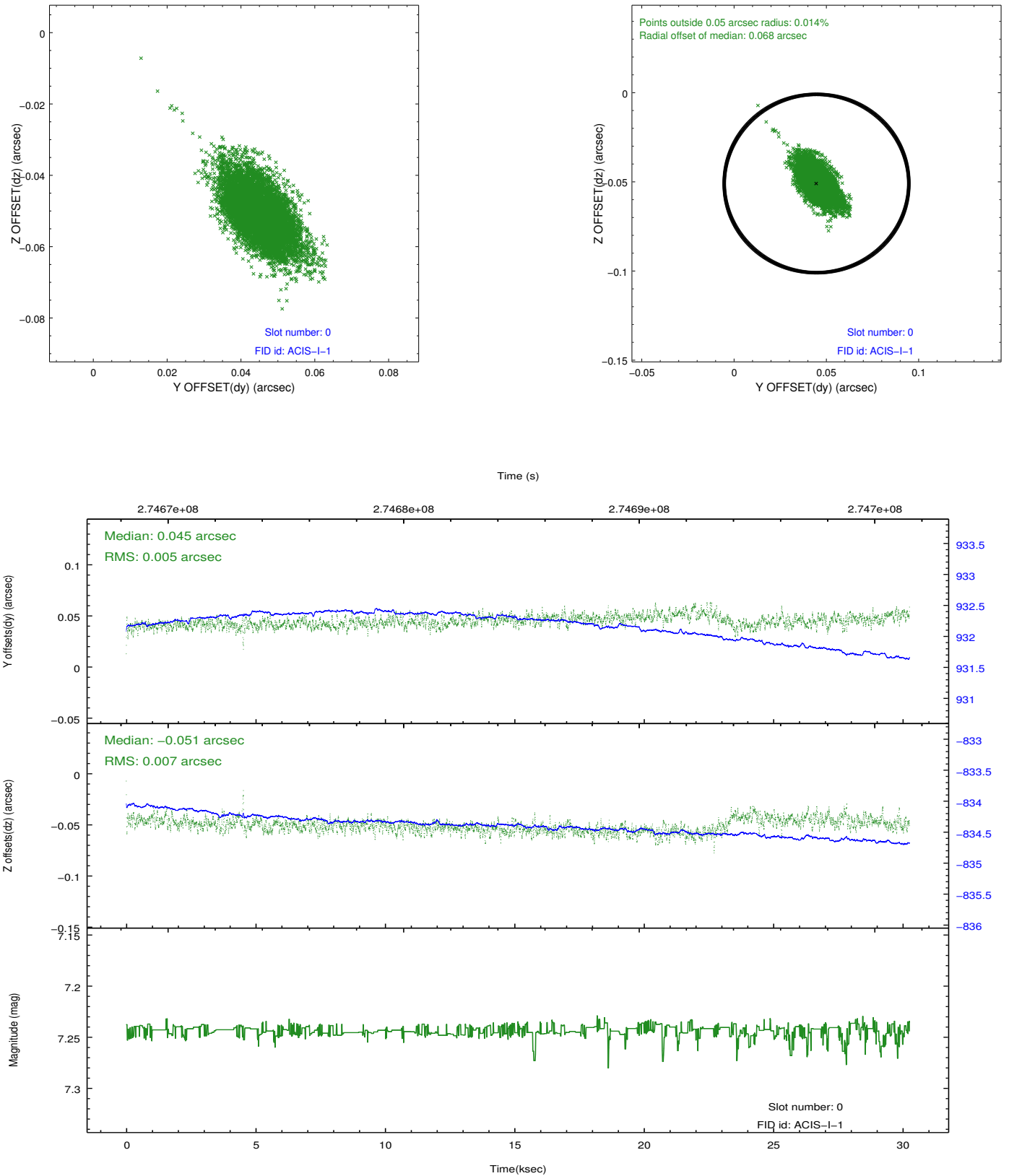


Time (s)

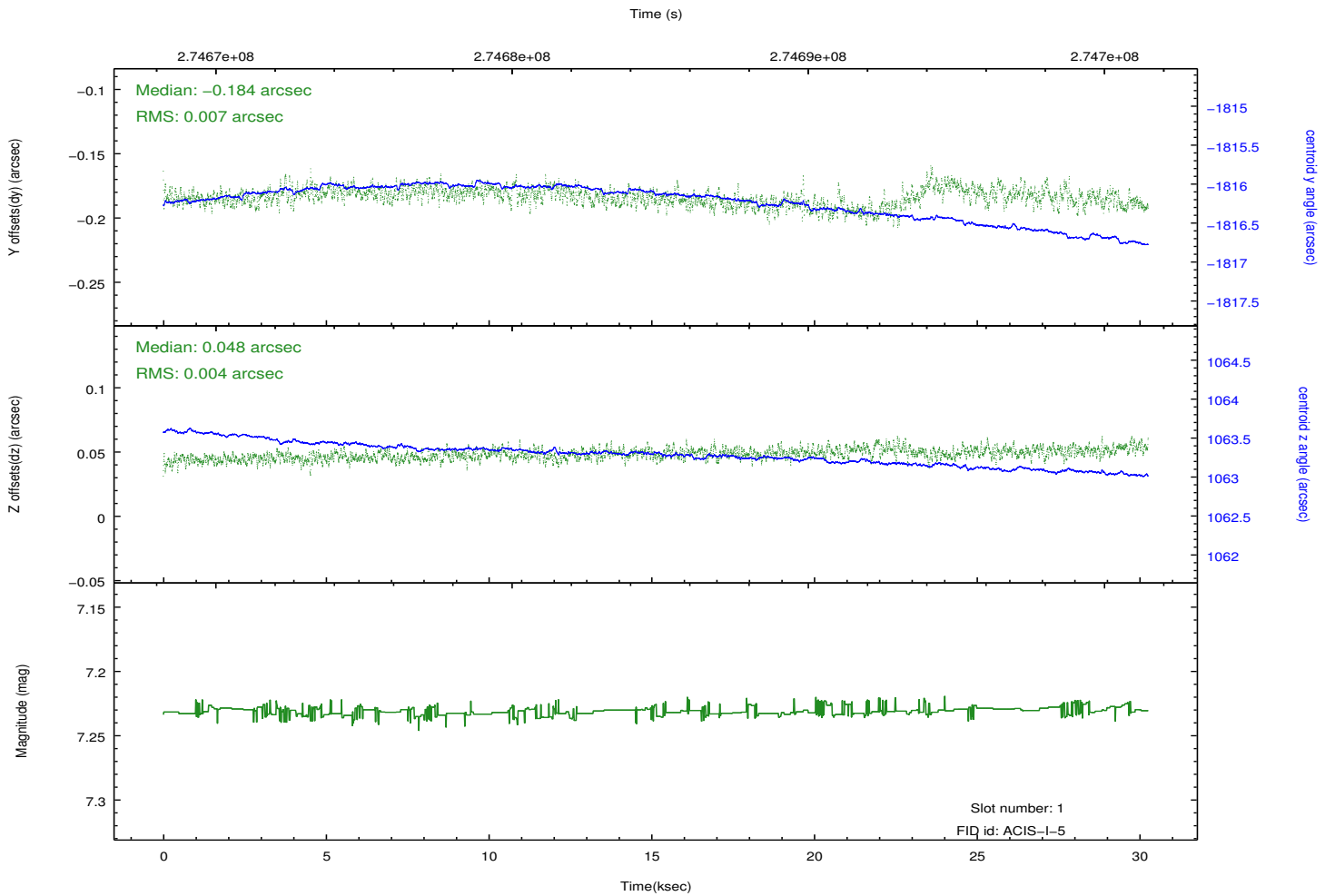
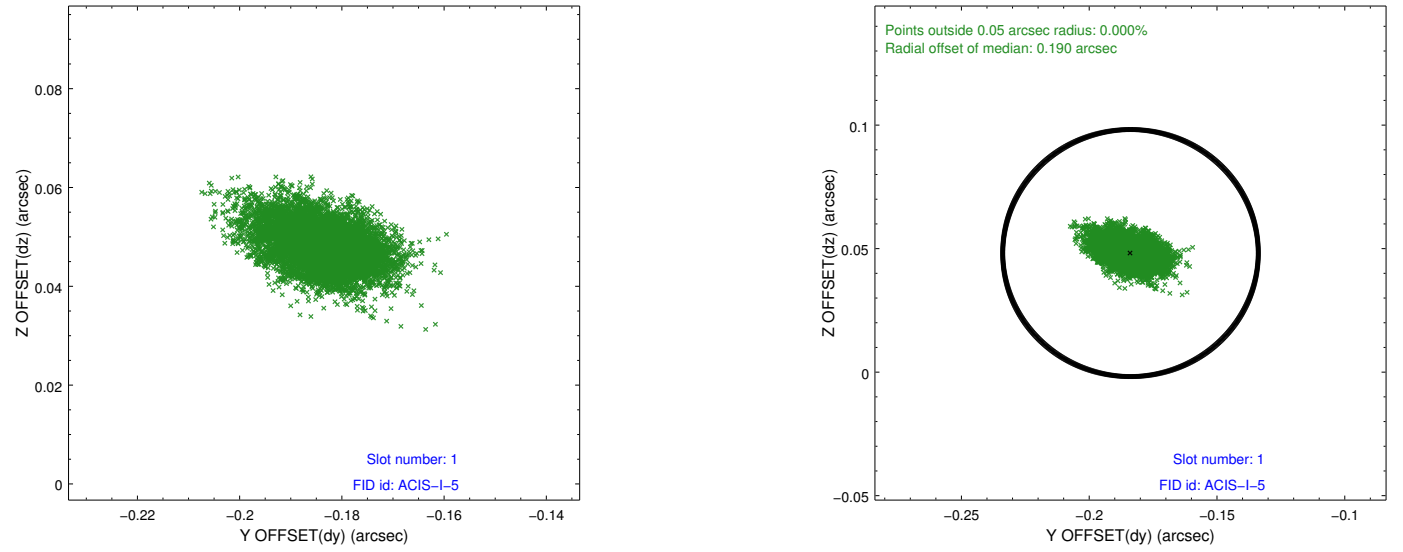


## 2.5 FID Slots

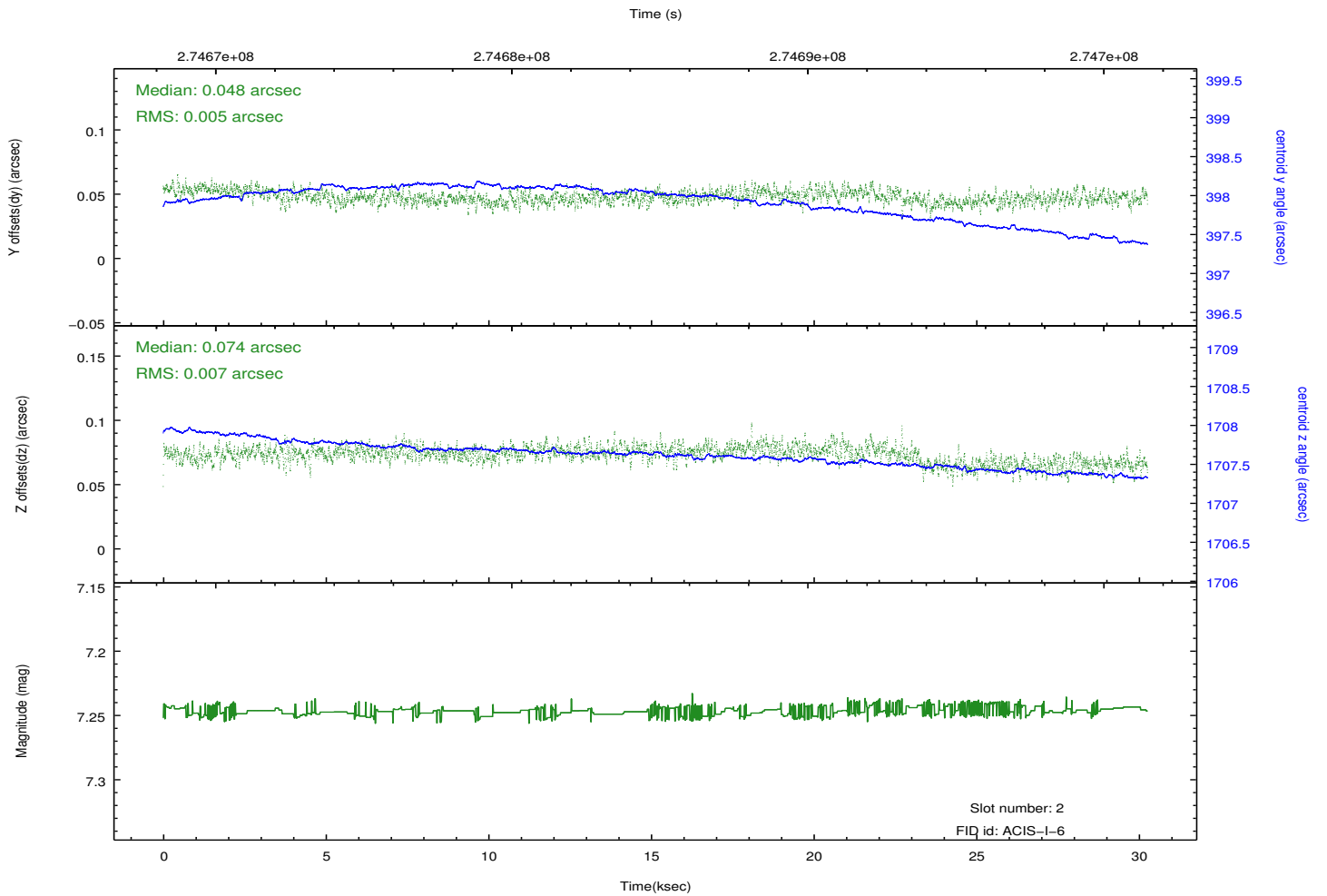
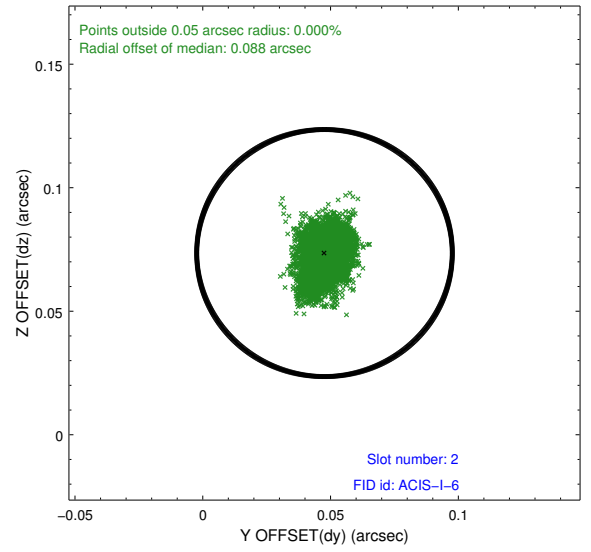
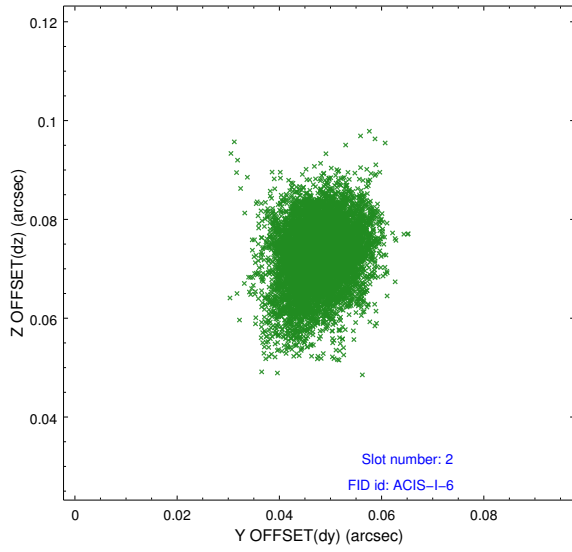
### 2.5.1 Slot 0



## 2.5.2 Slot 1



### 2.5.3 Slot 2



# A Summary

## A.1 Status

V&V Scientist	Beth Sundheim
V&V Date (YYYY-MM-DD)	2012.04.10
V&V Edition	1
V&V Disposition and Status	OK
V&V Charge Time	29.9487179

## A.2 Comments