

# V&V Reference Report

## L2 ASCDS Version : 8.4.3

Observation 6735 - L2 Version 2  
Chandra X-Ray Center

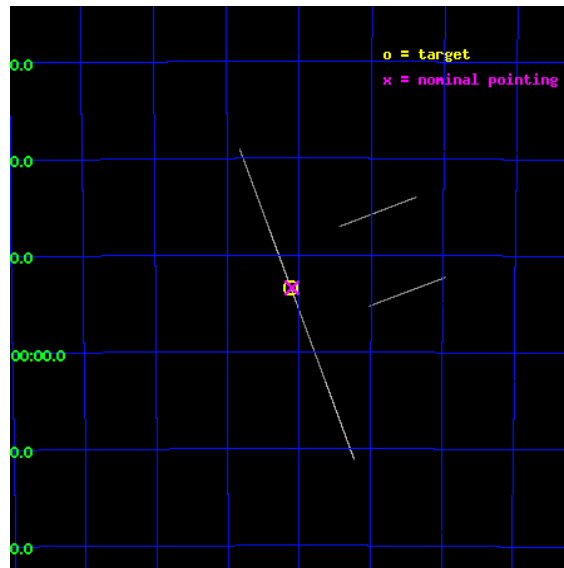
L2 Processing Date : Apr 3 2012

## Contents

<b>1</b>	<b>Front</b>	<b>2</b>
<b>2</b>	<b>OBI</b>	<b>3</b>
2.1	OBI . . . . .	3
2.1.1	Images . . . . .	3
2.1.2	Bias . . . . .	3
2.1.3	Parameters . . . . .	4
2.1.4	Events . . . . .	4
2.2	Compared Parameters . . . . .	5
2.3	Aspect . . . . .	6
2.4	Star Slots . . . . .	9
2.4.1	Slot 3 . . . . .	9
2.4.2	Slot 4 . . . . .	10
2.4.3	Slot 5 . . . . .	11
2.4.4	Slot 6 . . . . .	12
2.4.5	Slot 7 . . . . .	13
2.5	FID Slots . . . . .	14
2.5.1	Slot 0 . . . . .	14
2.5.2	Slot 1 . . . . .	15
2.5.3	Slot 2 . . . . .	16
<b>A</b>	<b>Summary</b>	<b>17</b>
A.1	Status . . . . .	17
A.2	Comments . . . . .	17

# 1 Front

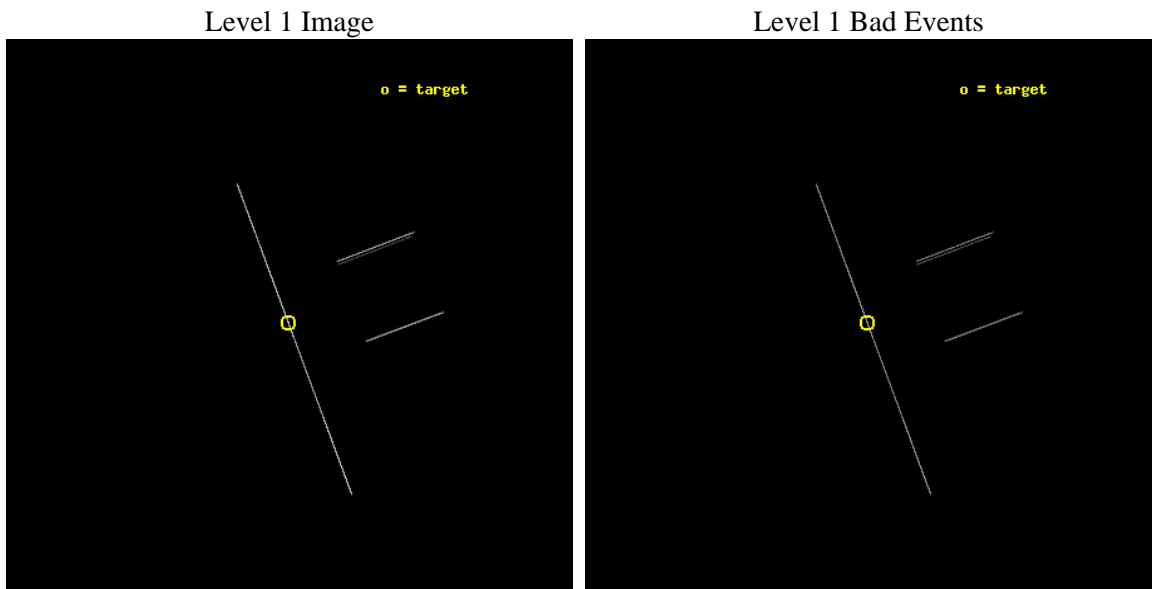
seq_num	500682	Sequence number
obs_id	6735	Observation id
title	THE X-RAY SPECTRAL AND OPTICAL/IR FLUX VARIABILITY IN MAGNETARS	Pr
observer	Professor Victoria Kaspi	Principal investigator
object	1E 1048.1-5937	Source name
ra_targ	162.529583	Observer's specified target RA [deg]
dec_targ	-59.889278	Observer's specified target Dec [deg]
ra_nom	162.52560161474	Nominal RA [deg]
dec_nom	-59.889884204394	Nominal Dec [deg]
roll_nom	249.48776506565	Nominal Roll [deg]
revision	2	Processing version of data
ontime	22182.0	Sum of GTIs [s]
livetime	22095.3515625	Livetime [s]
ontime2	22182.0	Sum of GTIs [s]
ontime3	22182.0	Sum of GTIs [s]
ontime5	22182.0	Sum of GTIs [s]
ontime6	22182.0	Sum of GTIs [s]
ontime7	22182.0	Sum of GTIs [s]
ontime8	22182.0	Sum of GTIs [s]
l2events	387191	Number of level 2 events



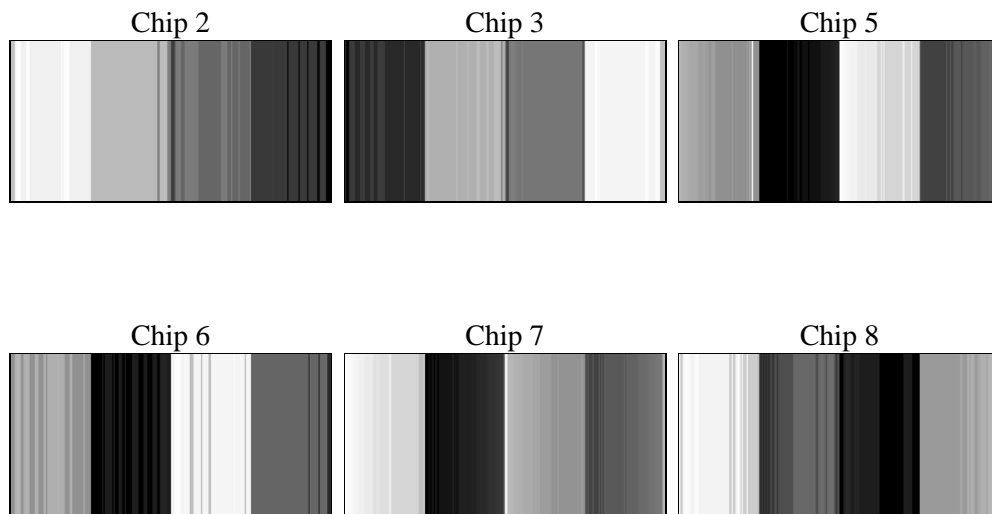
## 2 OBI

### 2.1 OBI

#### 2.1.1 Images



#### 2.1.2 Bias



### 2.1.3 Parameters

obi_num	0	Obi number	sched_exp_time	22000.000000	[s] Scheduled observation exposure time
ascdsver	8.4.3.1	Processing system revision	ontime	22182.0	Sum of GTIs [s]
caldbver	4.4.9	&#160	ontime2	22182.0	Sum of GTIs [s]
date	2012-04-03T11:51:20	Date and time of file creation	ontime3	22182.0	Sum of GTIs [s]
revision	2	Processing version of data	ontime5	22182.0	Sum of GTIs [s]
			ontime6	22182.0	Sum of GTIs [s]
			ontime7	22182.0	Sum of GTIs [s]
			ontime8	22182.0	Sum of GTIs [s]
			l1events	561862	Number of level 1 events

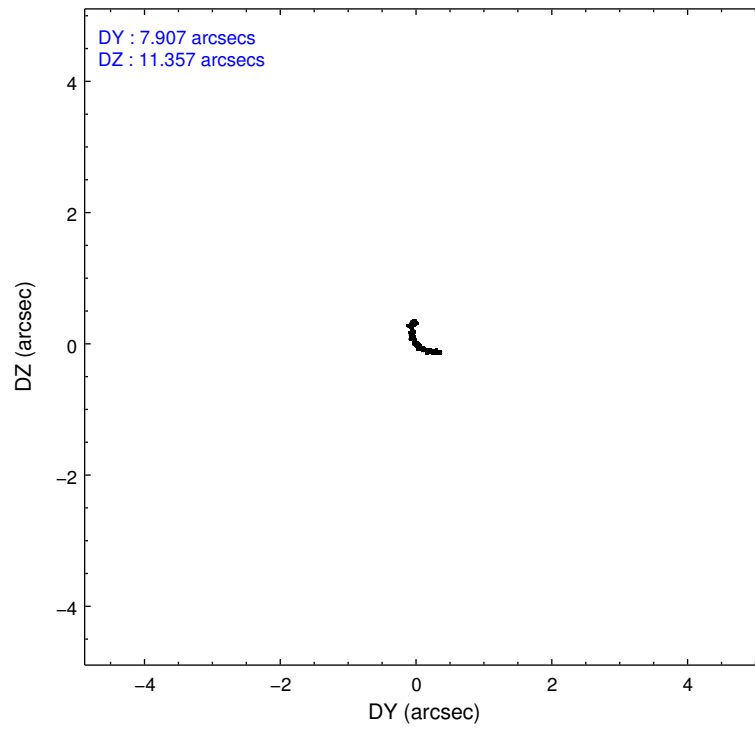
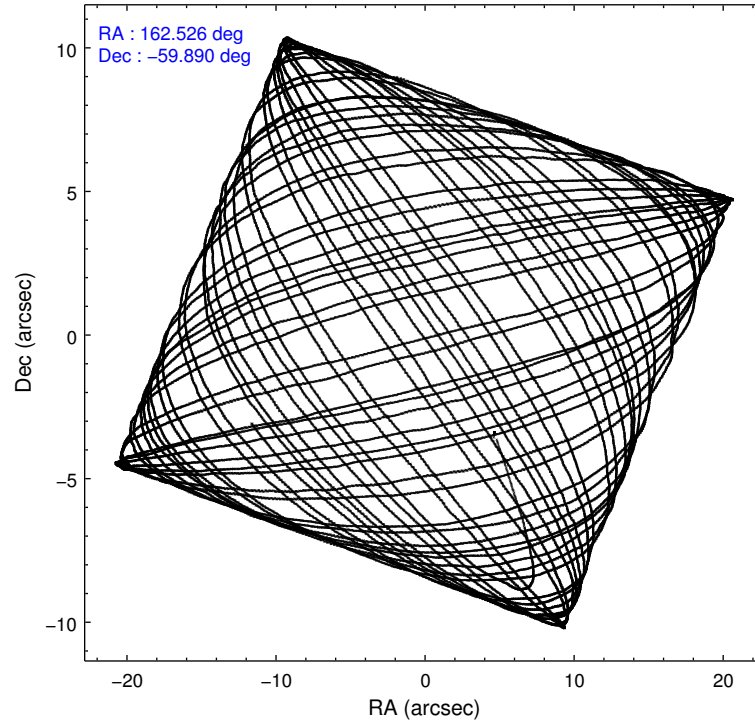
### 2.1.4 Events

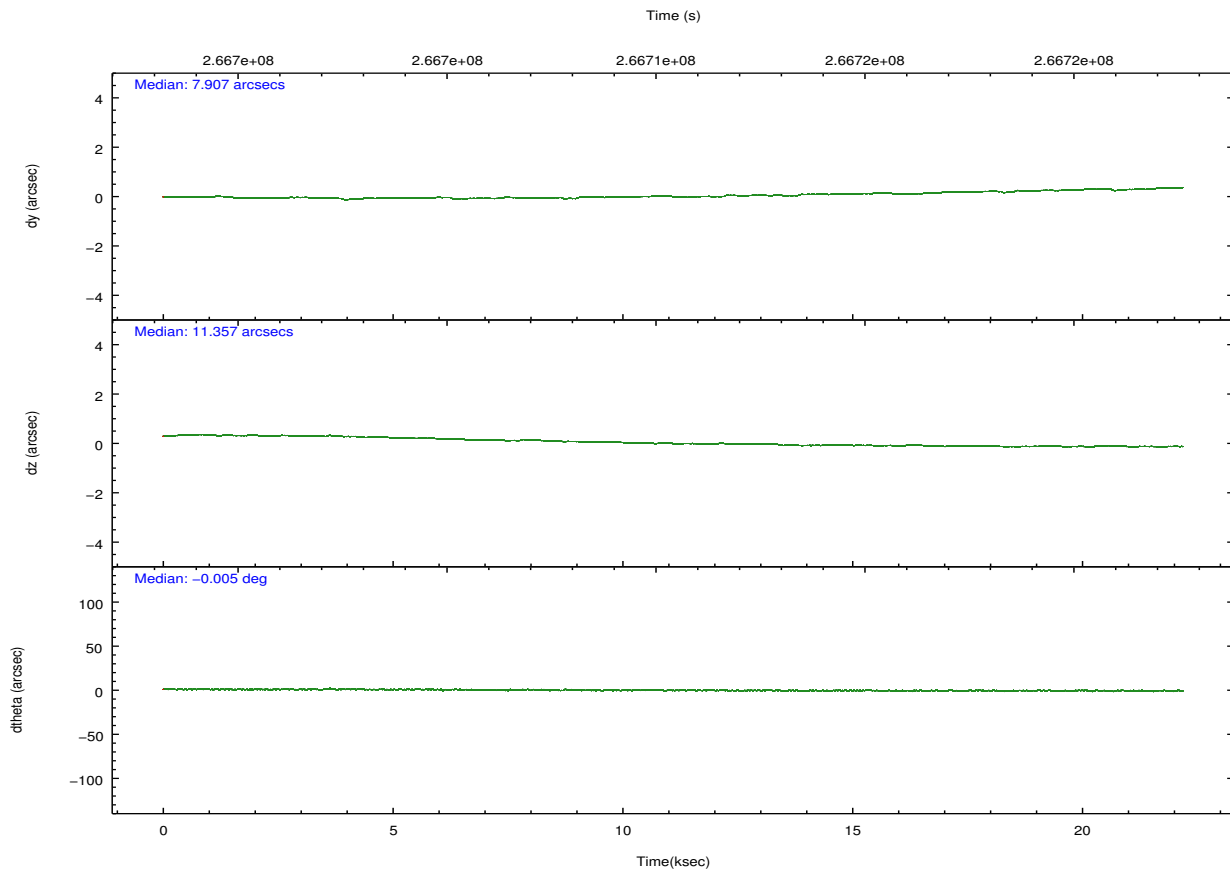
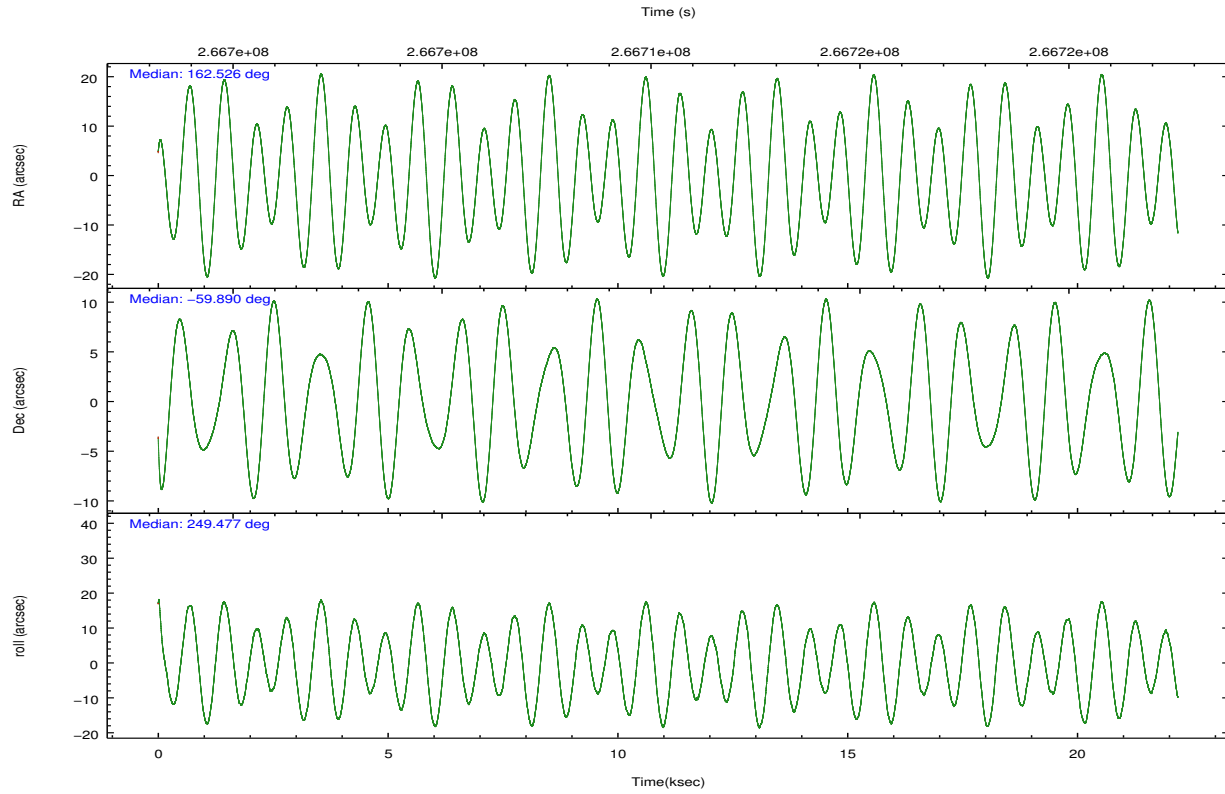
	ccd 2	ccd 3	ccd 5	ccd 6	ccd 7	ccd 8		ccd 2	ccd 3	ccd 5	ccd 6	ccd 7	ccd 8
level 1 events	44116	46554	172529	46270	158280	94113	grade 0 events	5998	5393	12834	4620	14649	16796
rejected events	8997	10218	26268	10400	27218	15875		13%	11%	7%	9%	9%	17%
rejected %	20%	21%	15%	22%	17%	16%	grade 1 events	213	189	311	157	364	367
								0%	0%	0%	0%	0%	0%
							grade 2 events	14172	14363	48508	14160	35063	25156
								32%	30%	28%	30%	22%	26%
							grade 3 events	4587	5426	4007	4875	10178	9153
								10%	11%	2%	10%	6%	9%
							grade 4 events	4638	4758	3793	4662	9918	8881
								10%	10%	2%	10%	6%	9%
							grade 5 events	7581	8607	19505	8936	22815	12783
								17%	18%	11%	19%	14%	13%
							grade 6 events	6927	7818	83571	8860	65293	20977
								15%	16%	48%	19%	41%	22%
							grade 7 events	0	0	0	0	0	0
								0%	0%	0%	0%	0%	0%

## 2.2 Compared Parameters

Parameter	Planned	Actual	Parameter	Planned	Actual
Instrument	ACIS	ACIS	Obspar format version number	7	7
Detector	ACIS-235678	ACIS-235678	Obspar file type	PREDICTED	ACTUAL
Grating	NONE	NONE	Obspar update status	NONE	UPDATED
Data mode	CC33_FAINT	CC33_FAINT	Number of optional ACIS chips dropped	0	0
Observation mode	POINTING	POINTING	On-chip summing requested	N	N
[deg] Pointing RA	162.515935	162.5256016147378	Subarray requested	NONE	NONE
[deg] Pointing Dec	-59.863066	-59.88988420439419	Alternating exposures requested	N	N
[deg] Pointing Roll	249.322770	249.4877650656501	[s] Primary exposure time	0.000000	0
[mm] SIM focus pos	-0.684267	-0.6828225247311905			
[mm] SIM defocus	0	0.001444936568705701			
[mm] SIM translation stage pos	-190.132523	-190.1400660498719			
[mm] SIM translation stage offset	0	0.00754346686406393			
[s] Observation start time (MET)	266699497.184000	266698494.72851			
Observation start date	2006-06-14T19:10:32	2006-06-14T18:54:54			
[s] Observation end time (MET)	266721497.184000	266722758.01715			
Observation end date	2006-06-15T01:17:12	2006-06-15T01:39:18			
Read mode	CONTINUOUS	CONTINUOUS			

## 2.3 Aspect



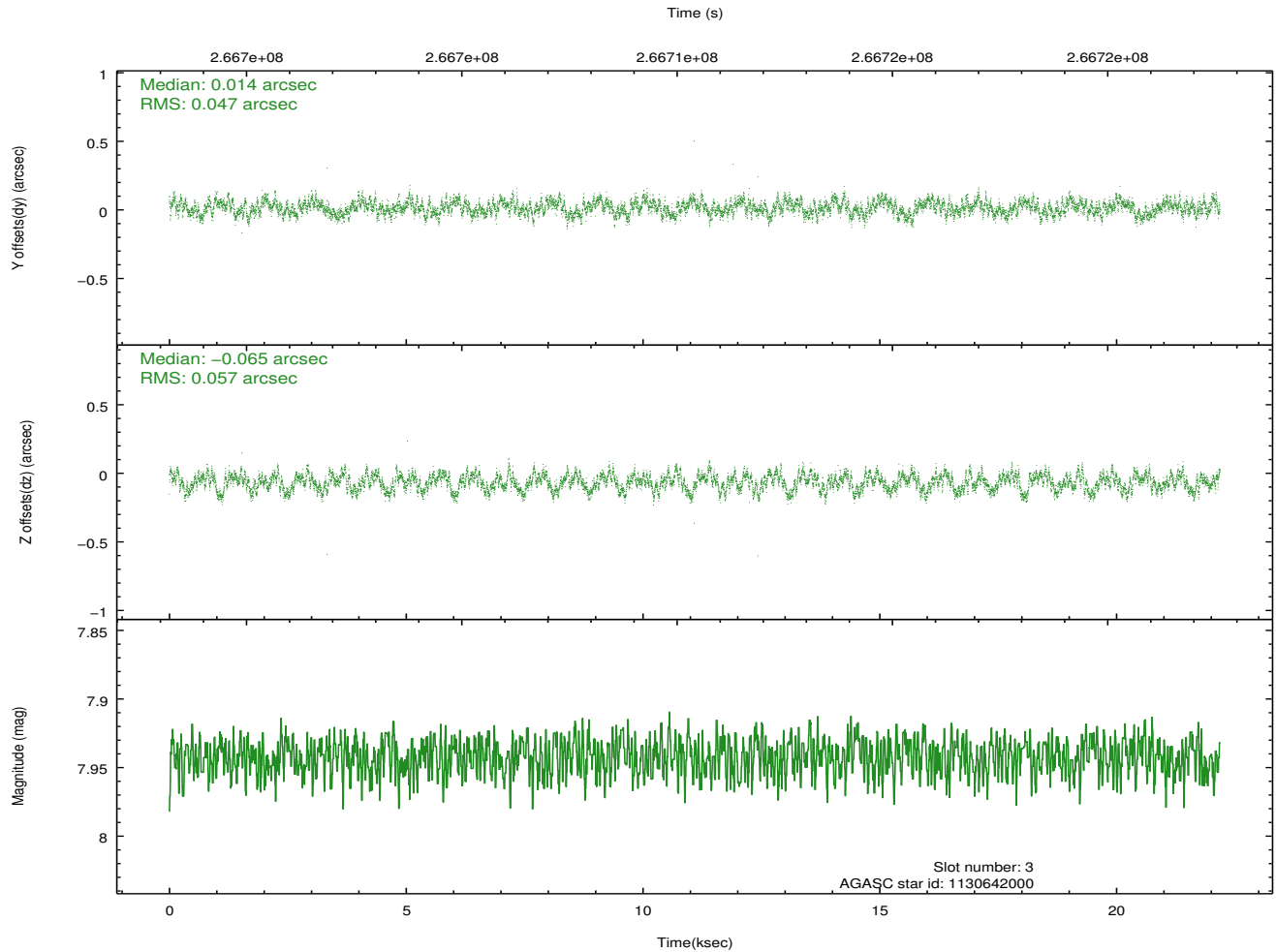
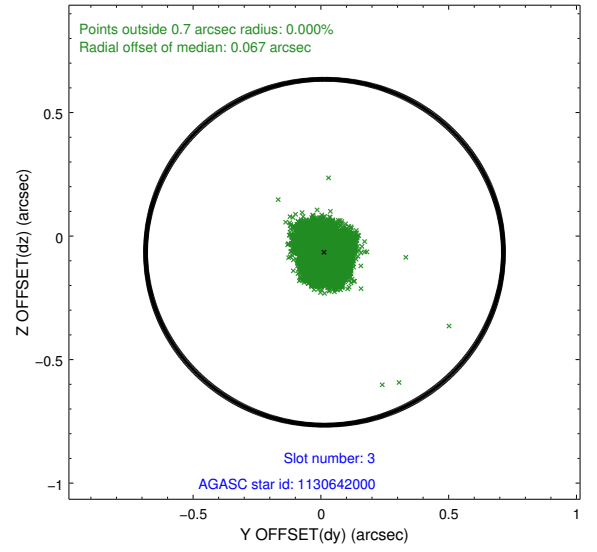
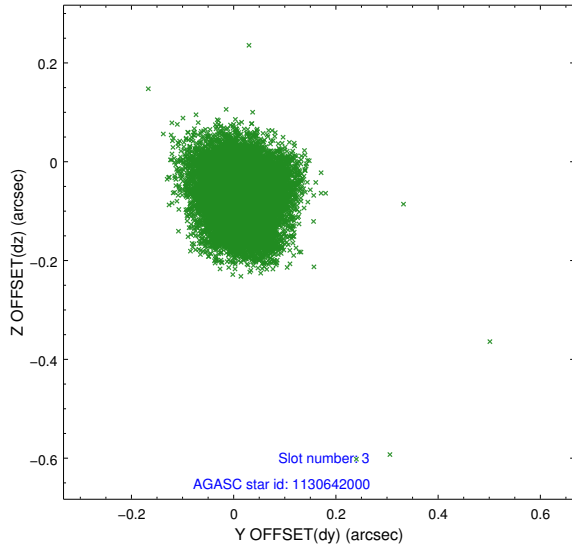


### Slot Statistics

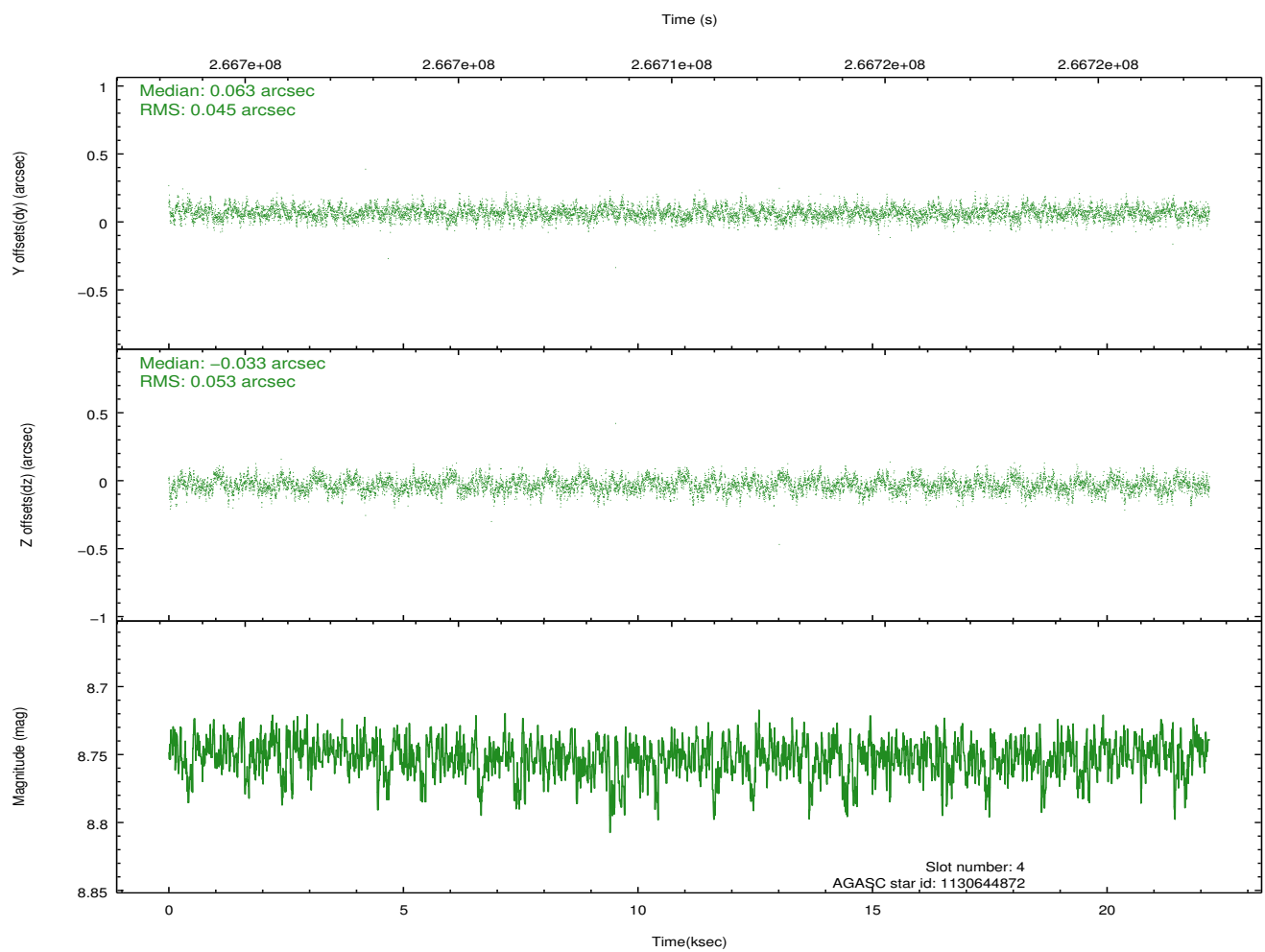
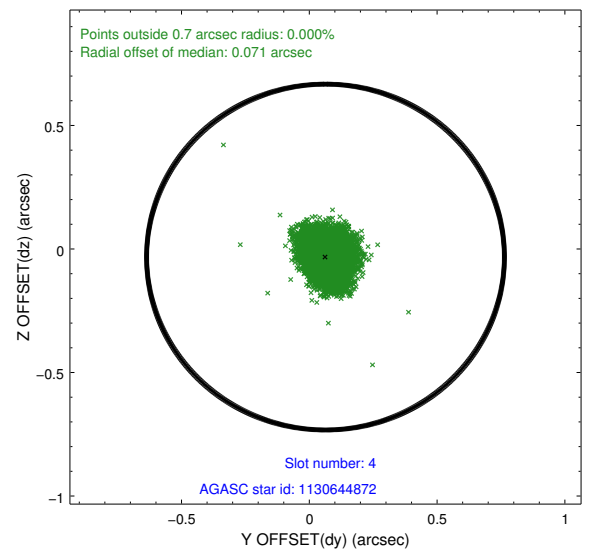
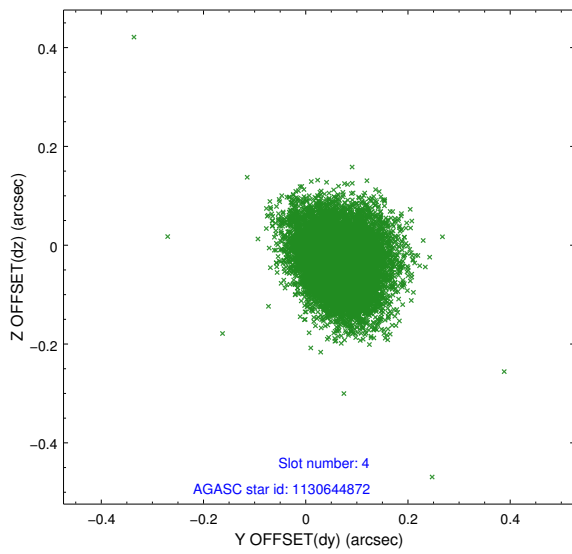
slot	status	id	mag	n_pts	med_dy	med_dz	dr1	dr2	ra	dec	mean_y	mean_z
0	FID	ACIS-S-2	7.10	5412	-0.037	-0.028	0.008	0.013	0.000000	0.000000	-760.75	-1732.73
1	FID	ACIS-S-4	7.21	5409	0.123	0.025	0.012	0.022	0.000000	0.000000	2152.59	175.68
2	FID	ACIS-S-5	7.23	5412	-0.118	0.011	0.010	0.018	0.000000	0.000000	-1813.51	169.46
3	GUIDE	1130642000	7.94	10820	0.014	-0.065	0.081	0.121	162.836255	-59.743891	-605.05	392.55
4	GUIDE	1130644872	8.75	10819	0.063	-0.033	0.074	0.121	161.122831	-59.955030	1221.73	-2222.54
5	GUIDE	1130632200	7.55	10822	-0.099	-0.054	0.061	0.096	161.433843	-59.407820	-817.52	-2428.06
6	GUIDE	1174033144	8.55	10818	-0.030	0.117	0.067	0.108	161.168741	-60.059230	1538.97	-2006.23
7	GUIDE	1174166216	8.01	10821	0.048	0.041	0.078	0.122	163.522199	-60.352910	1029.89	2303.78

## 2.4 Star Slots

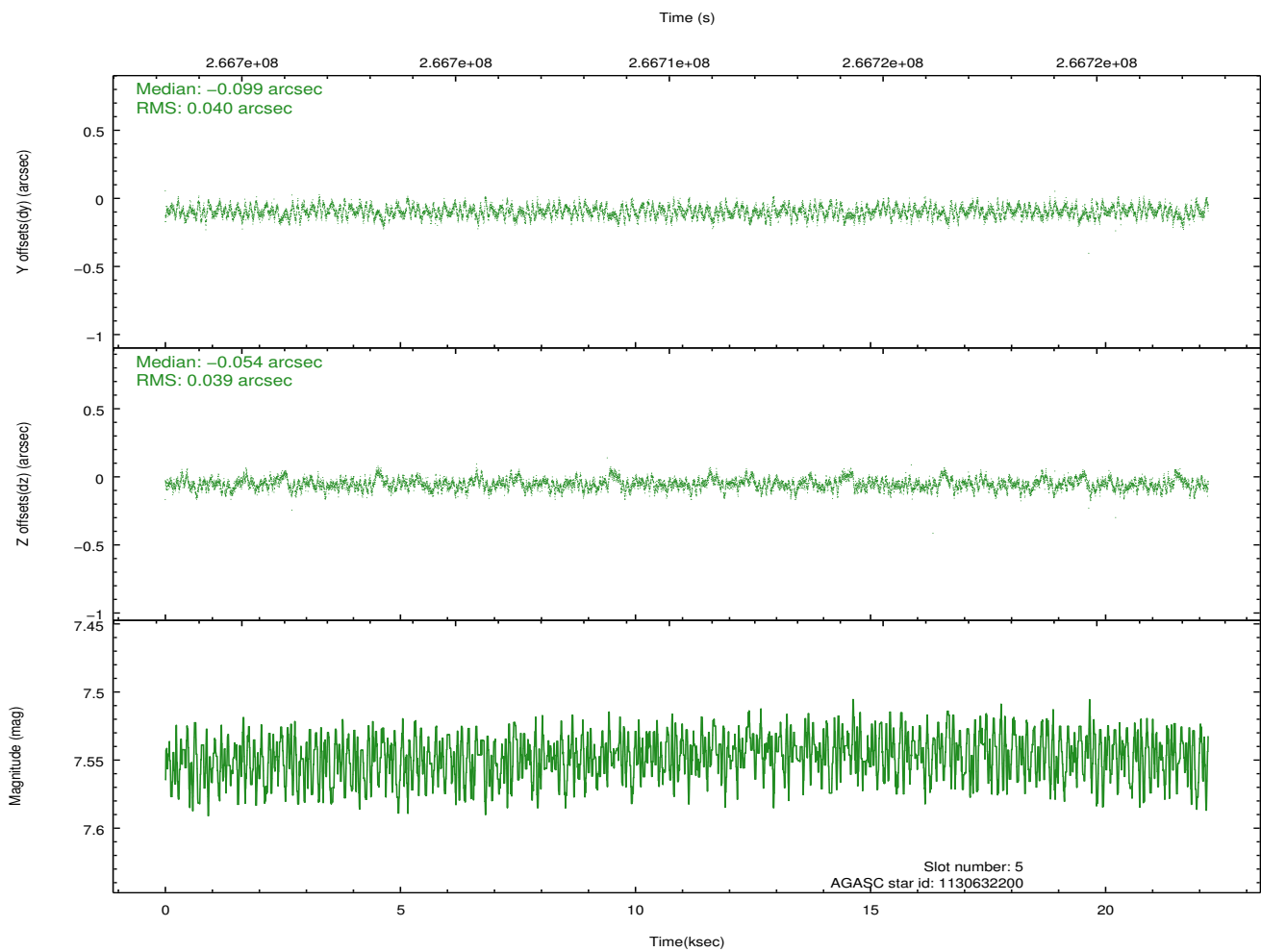
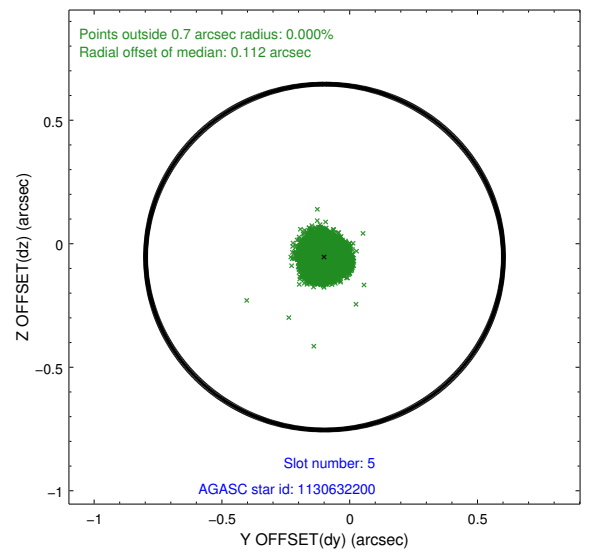
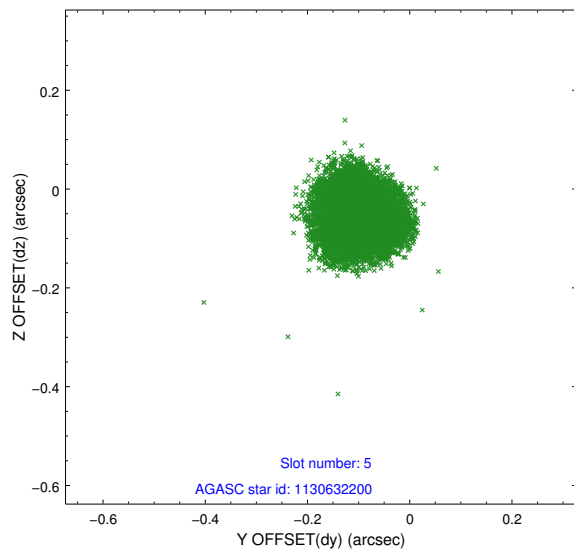
### 2.4.1 Slot 3



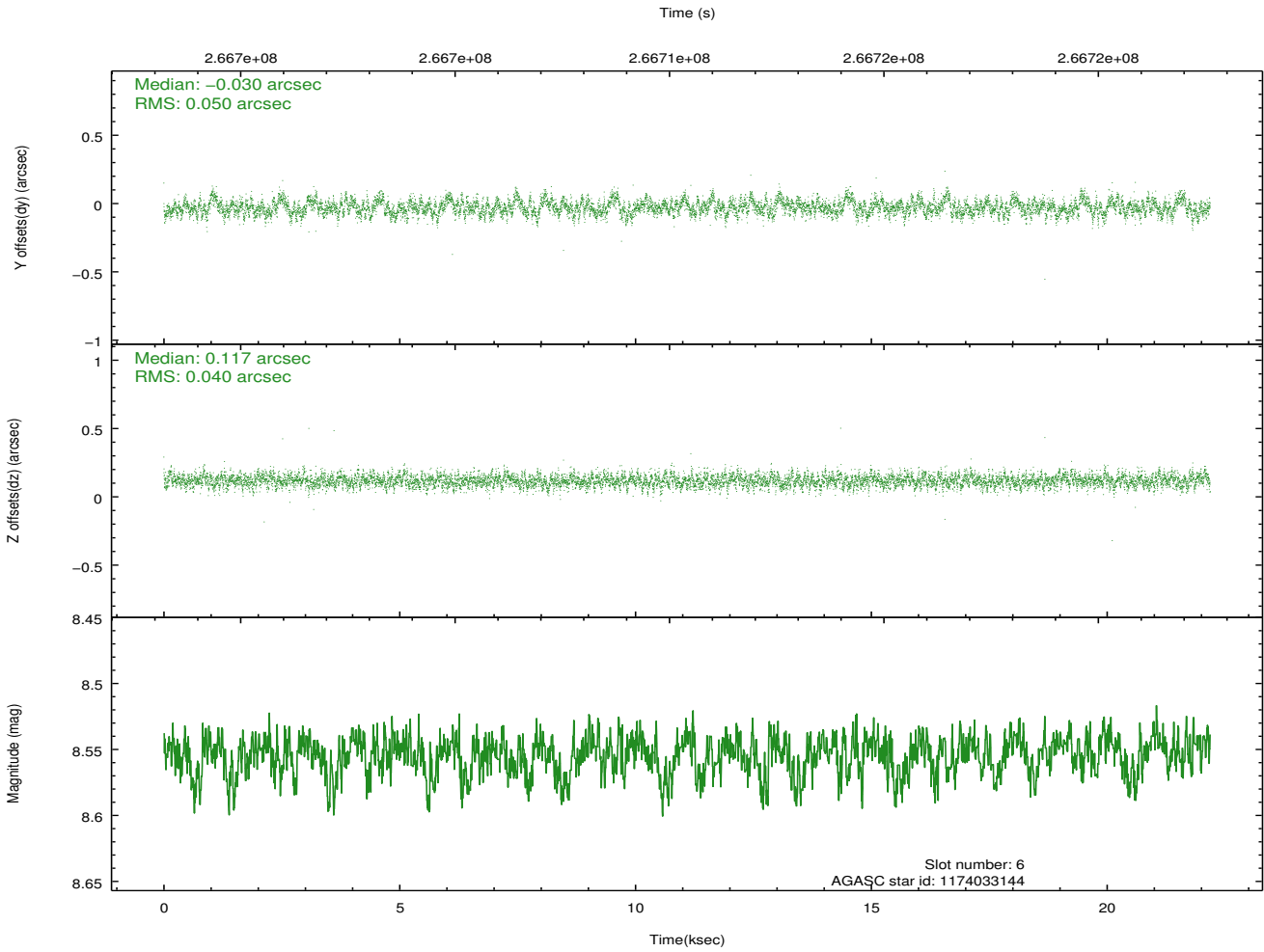
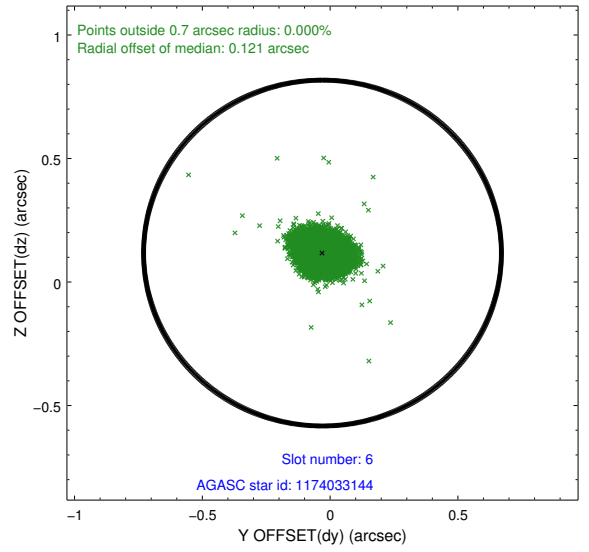
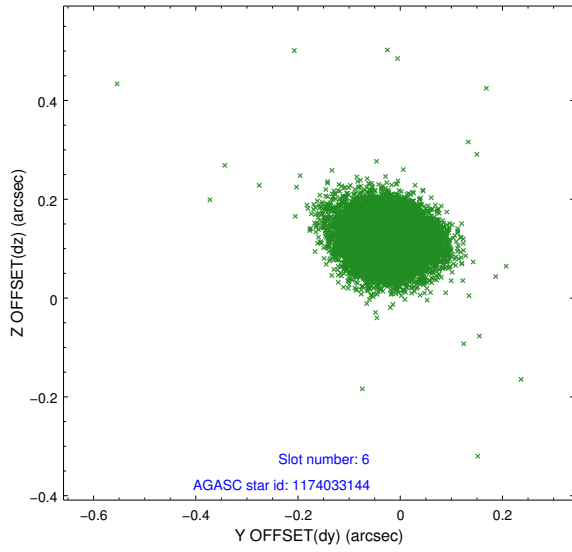
## 2.4.2 Slot 4



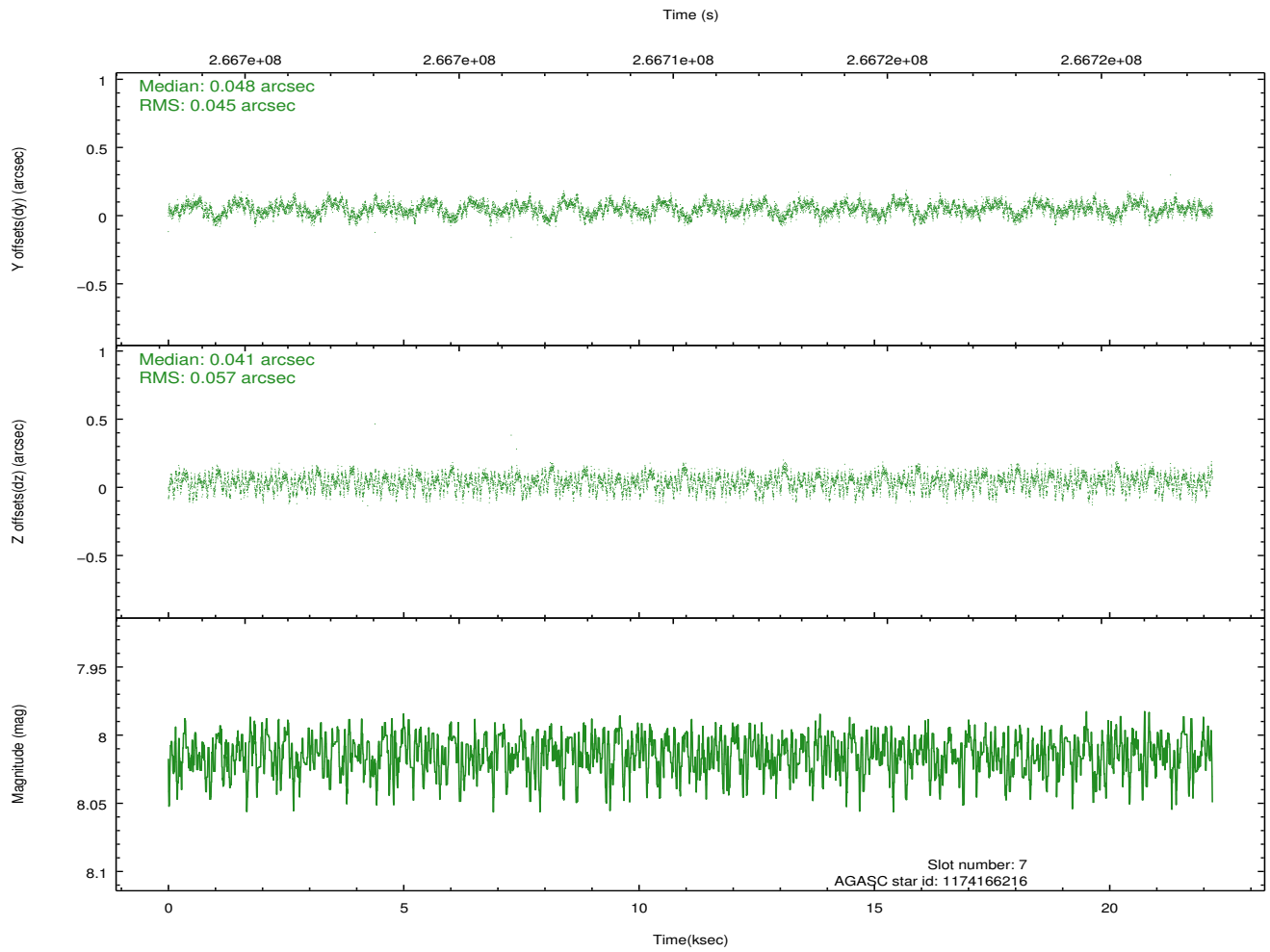
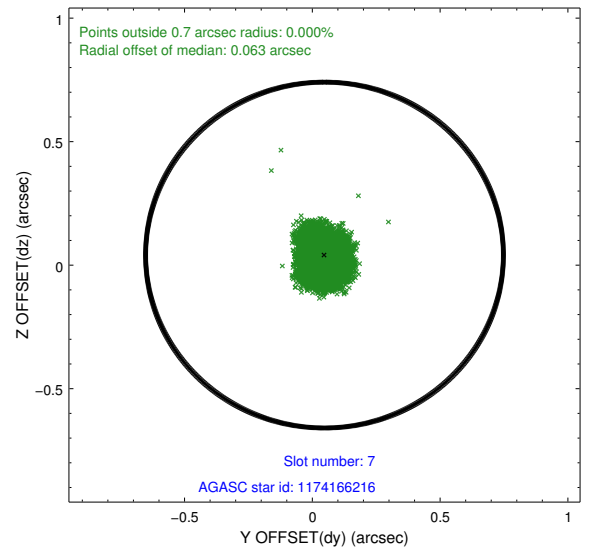
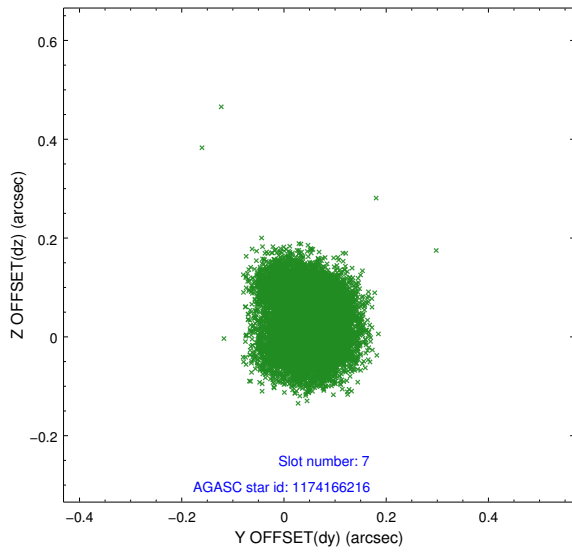
### 2.4.3 Slot 5



### 2.4.4 Slot 6

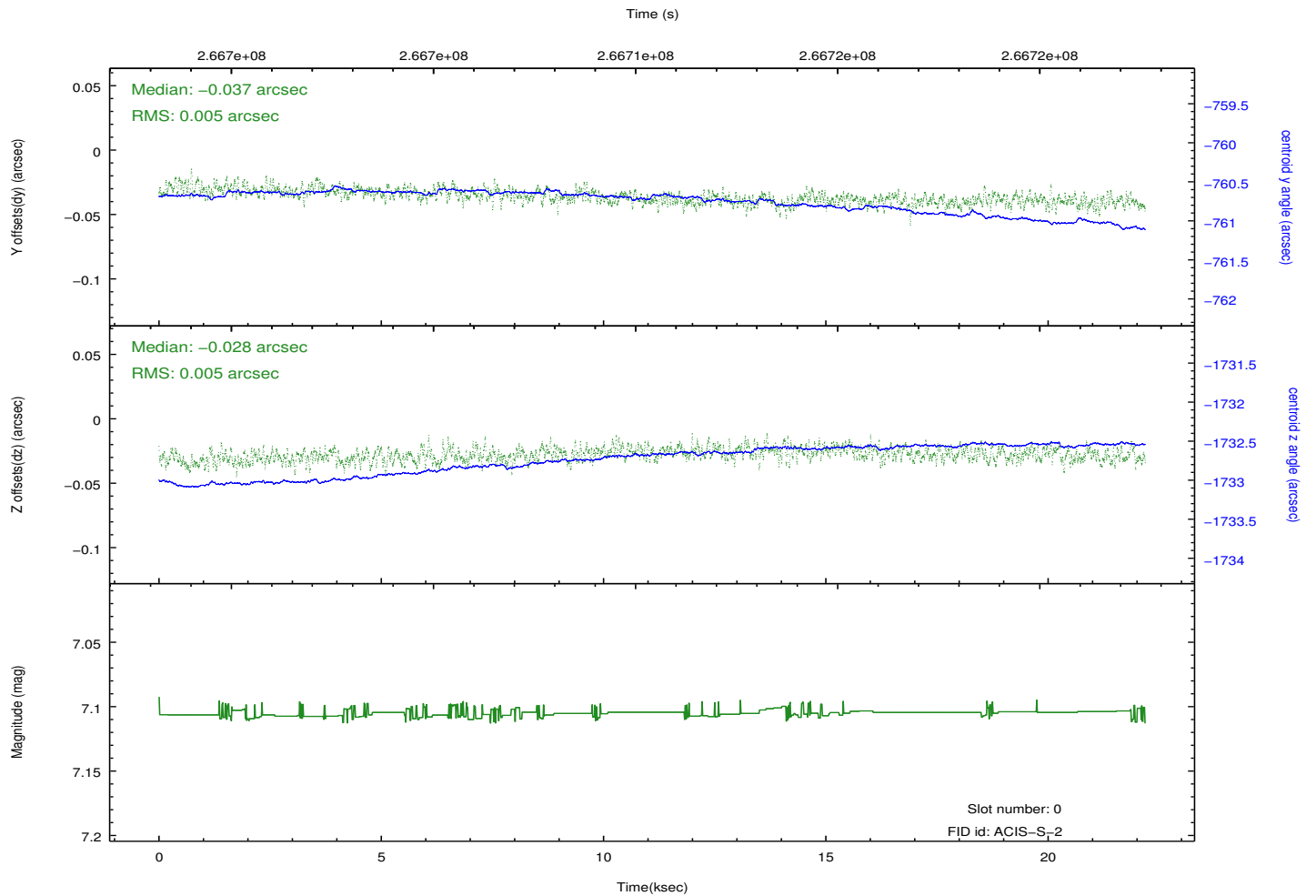
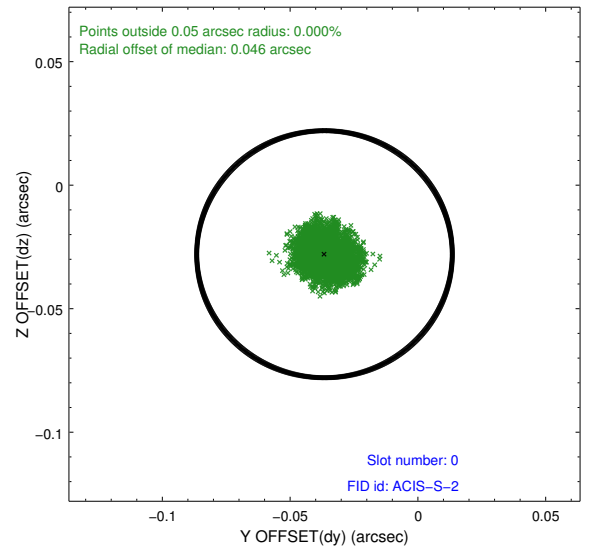
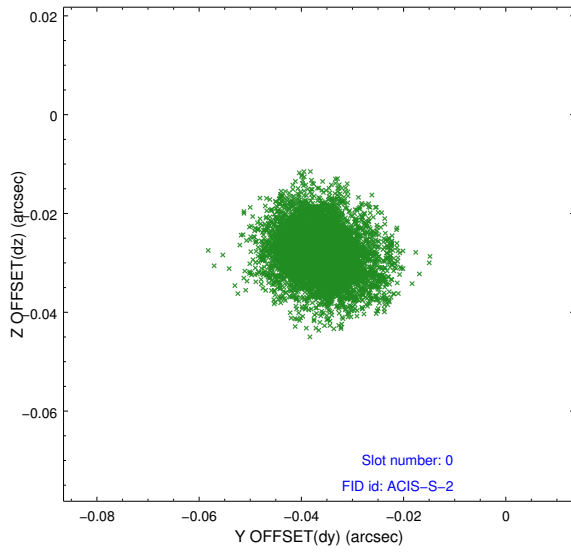


### 2.4.5 Slot 7

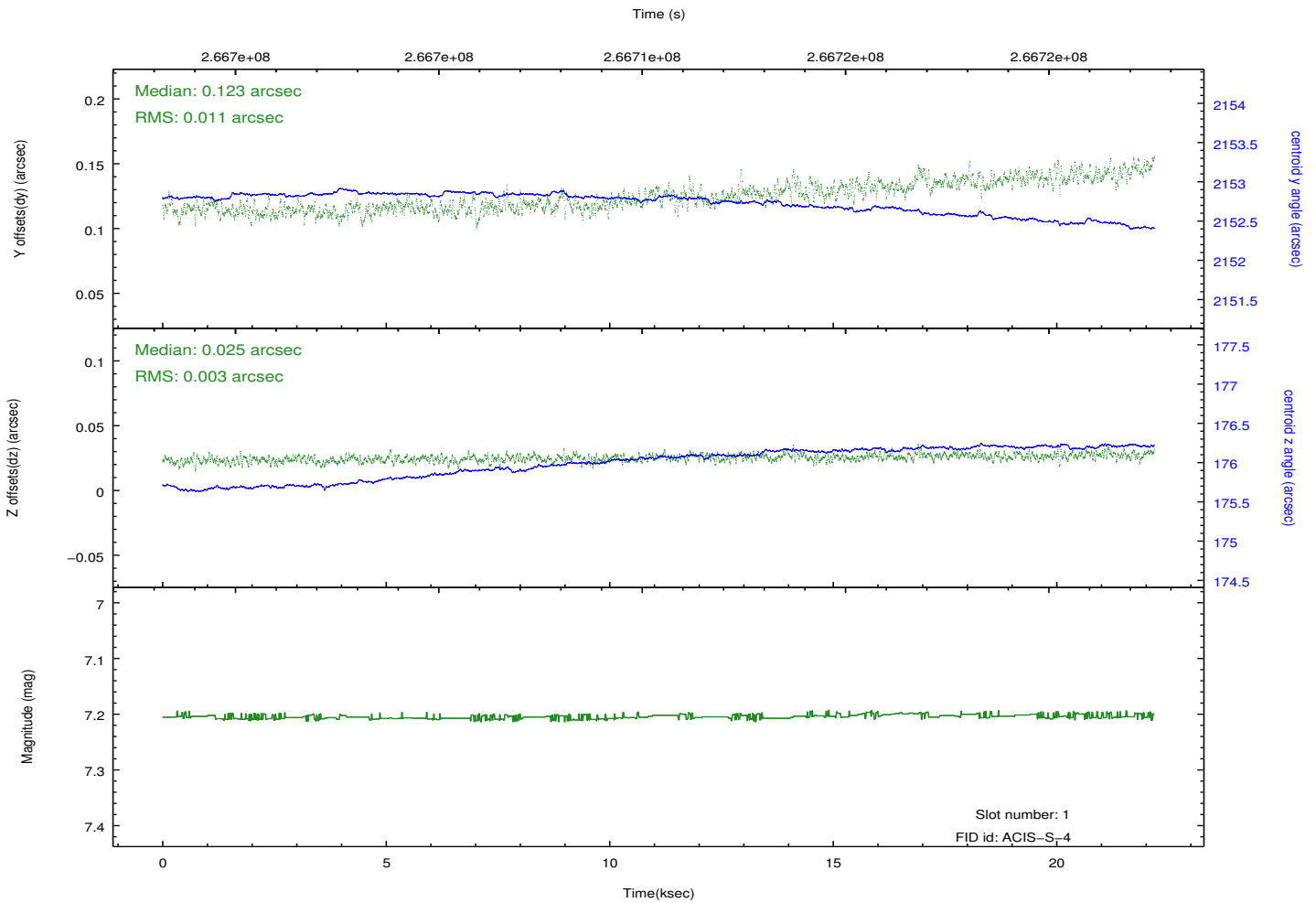
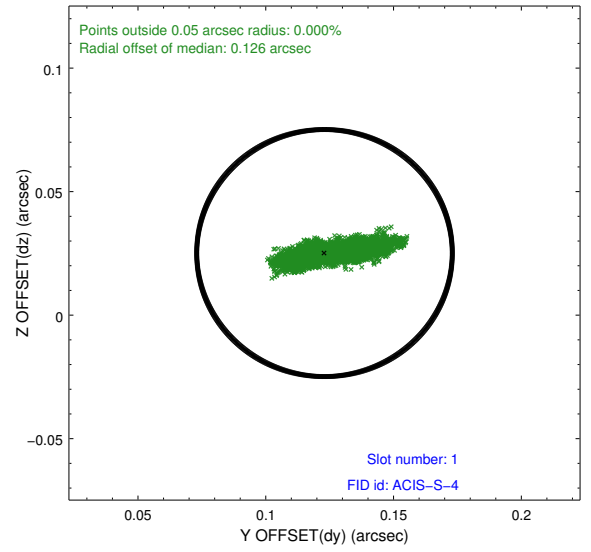
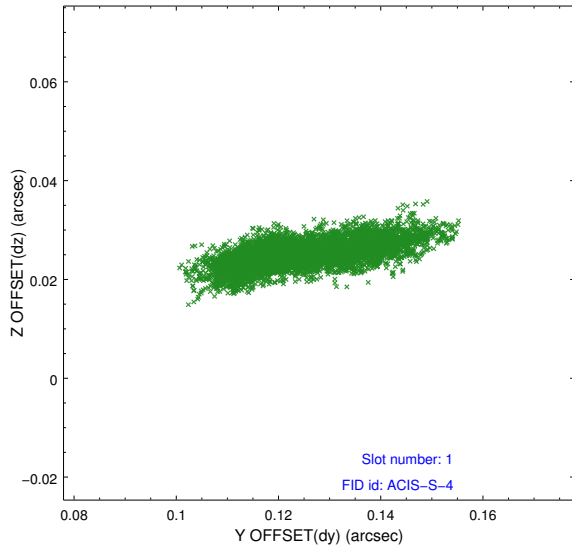


## 2.5 FID Slots

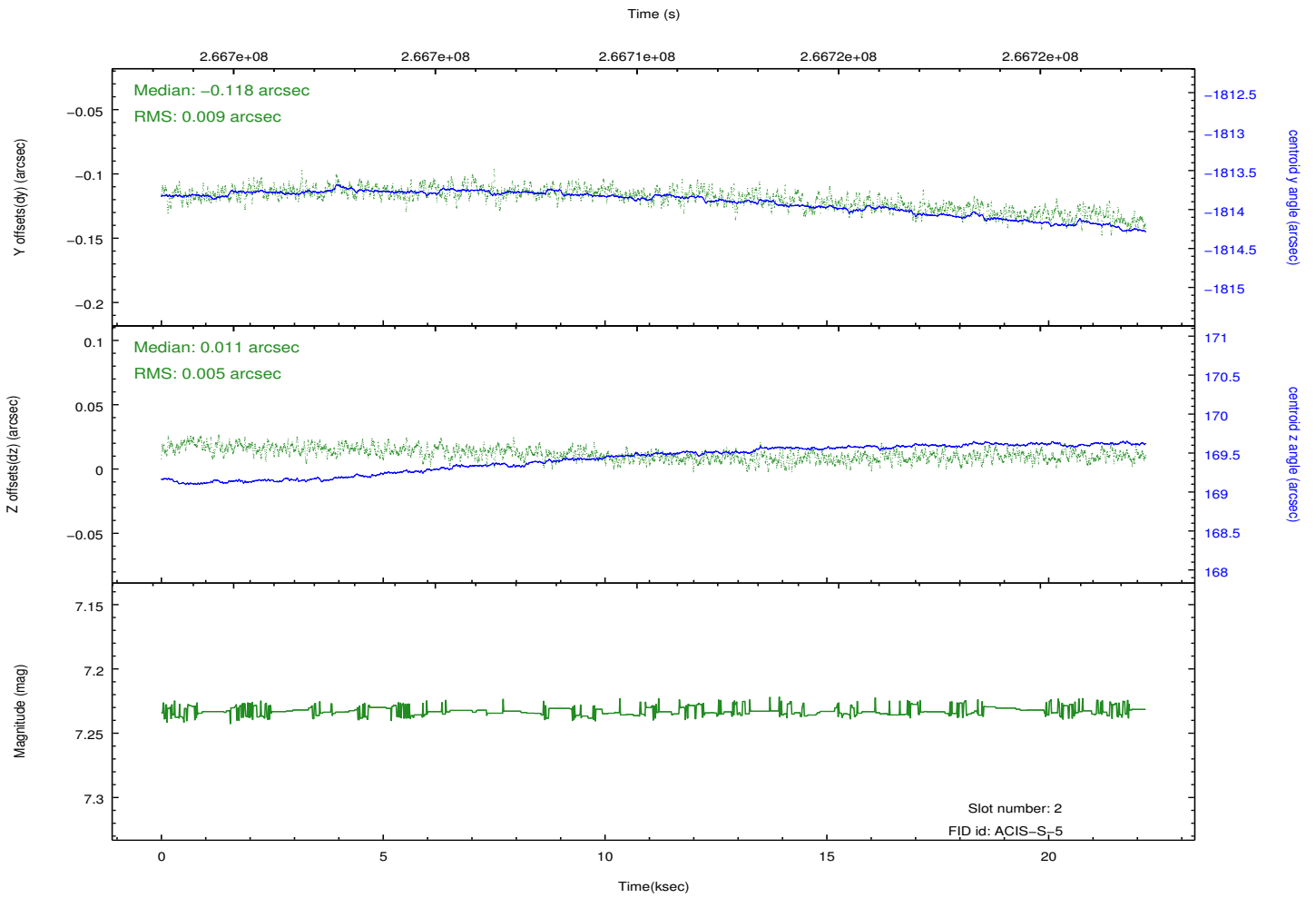
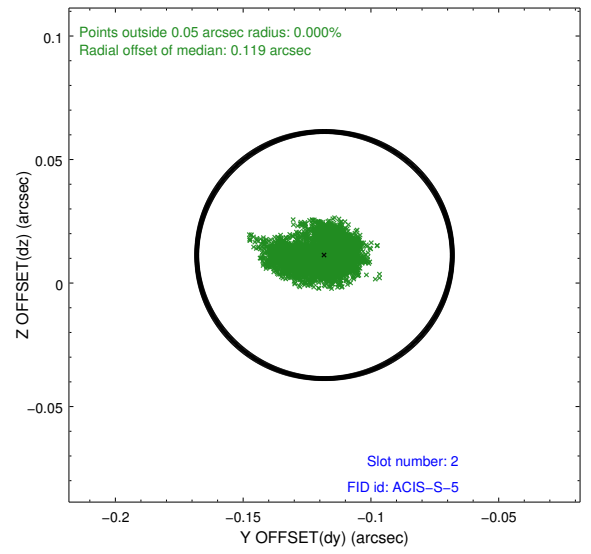
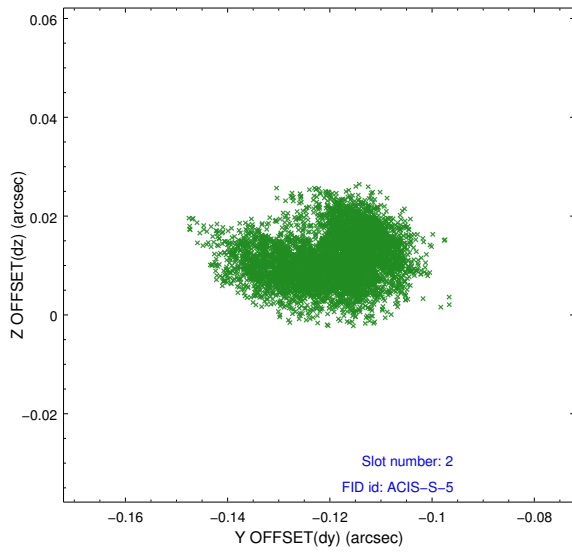
### 2.5.1 Slot 0



## 2.5.2 Slot 1



### 2.5.3 Slot 2



# A Summary

## A.1 Status

V&V Scientist	Joy Nichols
V&V Date (YYYY-MM-DD)	2012.04.04
V&V Edition	1
V&V Disposition and Status	OK
V&V Charge Time	22.182

## A.2 Comments