

# V&V Reference Report

## L2 ASCDS Version : 8.4.3

Observation 6795 - L2 Version 2  
Chandra X-Ray Center

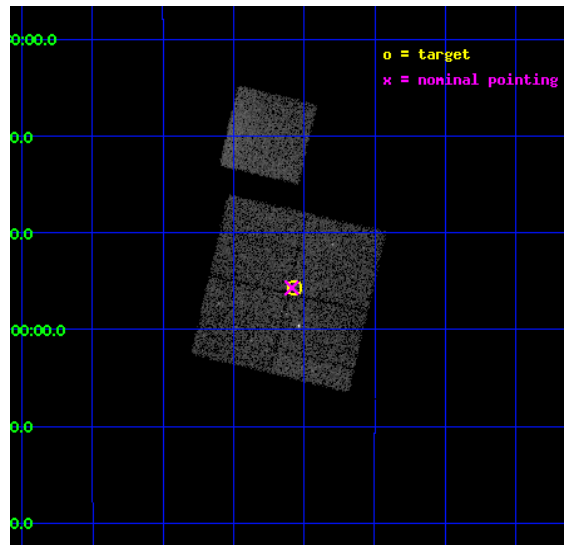
L2 Processing Date : Mar 24 2012

## Contents

<b>1</b>	<b>Front</b>	<b>2</b>
<b>2</b>	<b>OBI</b>	<b>3</b>
2.1	OBI . . . . .	3
2.1.1	Images . . . . .	3
2.1.2	Bias . . . . .	3
2.1.3	Parameters . . . . .	4
2.1.4	Events . . . . .	4
2.2	Compared Parameters . . . . .	5
2.3	Aspect . . . . .	6
2.4	Star Slots . . . . .	9
2.4.1	Slot 3 . . . . .	9
2.4.2	Slot 4 . . . . .	10
2.4.3	Slot 5 . . . . .	11
2.4.4	Slot 6 . . . . .	12
2.4.5	Slot 7 . . . . .	13
2.5	FID Slots . . . . .	14
2.5.1	Slot 0 . . . . .	14
2.5.2	Slot 1 . . . . .	15
2.5.3	Slot 2 . . . . .	16
<b>A</b>	<b>Summary</b>	<b>17</b>
A.1	Status . . . . .	17
A.2	Comments . . . . .	17

# 1 Front

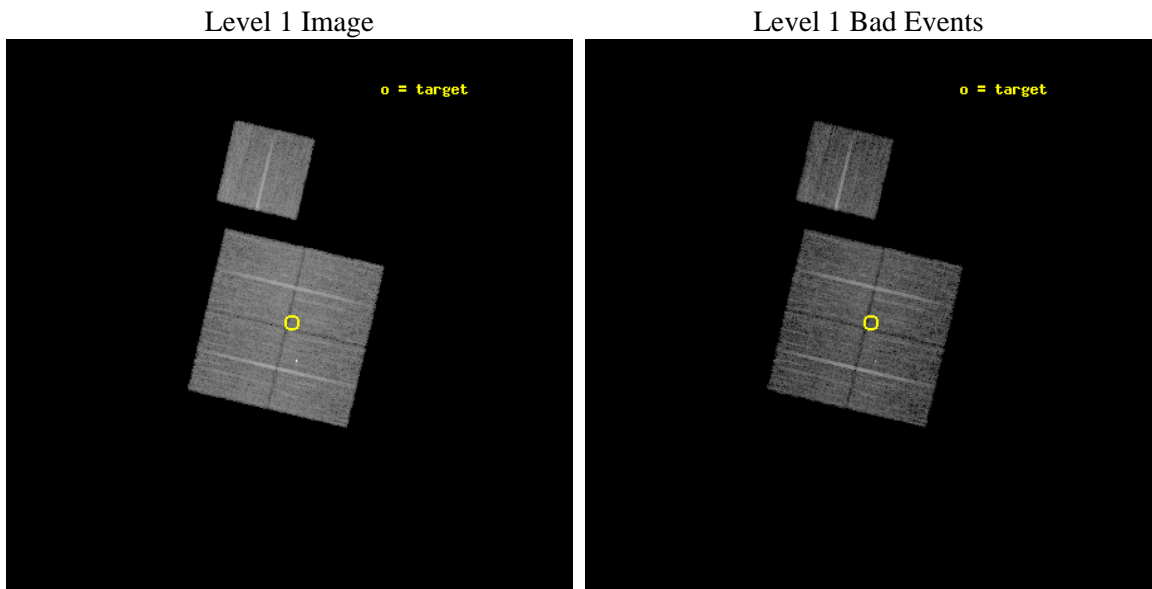
seq_num	701213	Sequence number
obs_id	6795	Observation id
title	AGN in the Outskirts of Low-Redshift Clusters of Galaxies	Proposal
observer	Prof. Paul Martini	Principal investigator
object	Abell754-P3	Source name
dtcycle	0	&#160
cycle	P	events from which exps? Prim/Second/Both
ra_targ	137.017083	Observer's specified target RA [deg]
dec_targ	-9.9275	Observer's specified target Dec [deg]
ra_nom	137.02171523963	Nominal RA [deg]
dec_nom	-9.9282999381276	Nominal Dec [deg]
roll_nom	13.283057012309	Nominal Roll [deg]
revision	2	Processing version of data
ontime	9772.9929258227	Sum of GTIs [s]
livetime	9645.3015784741	Livetime [s]
ontime0	9769.7288254797	Sum of GTIs [s]
ontime1	9769.7698356509	Sum of GTIs [s]
ontime2	9766.6698852777	Sum of GTIs [s]
ontime3	9772.9929258227	Sum of GTIs [s]
ontime6	9766.546775341	Sum of GTIs [s]
l2events	37876	Number of level 2 events



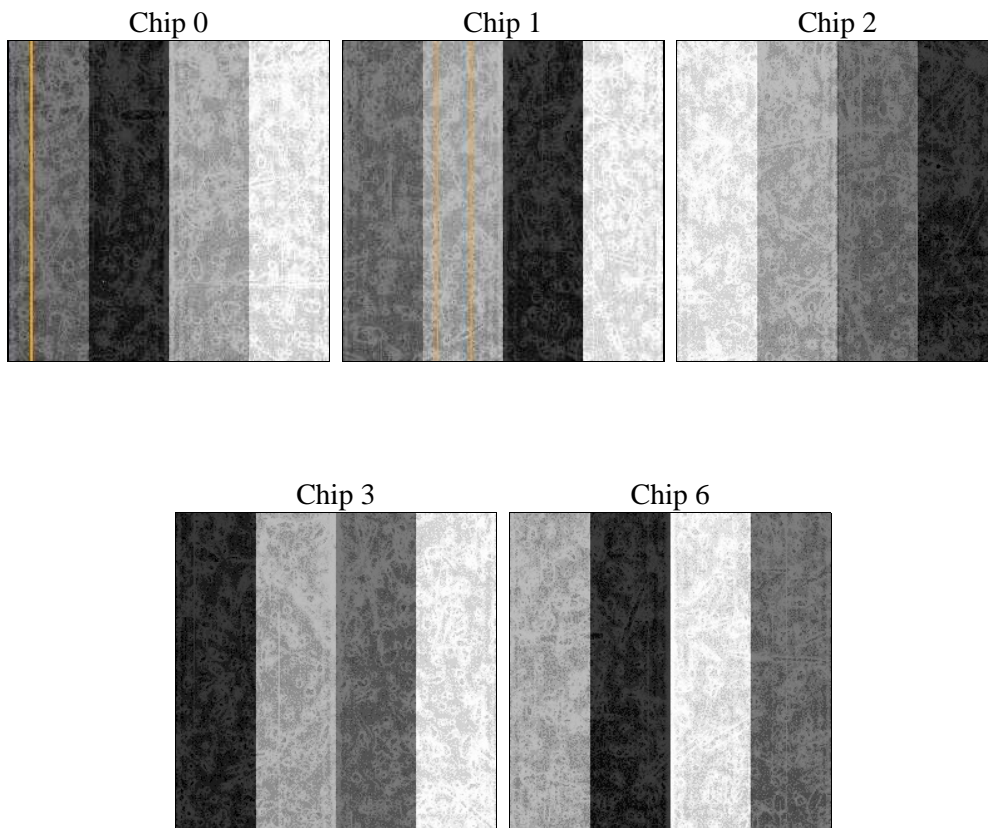
## 2 OBI

### 2.1 OBI

#### 2.1.1 Images



#### 2.1.2 Bias



### 2.1.3 Parameters

obi_num	0	Obi number	sched_exp_time	10000.000000	[s] Scheduled observation exposure time
ascdsver	8.4.3	Processing system revision	ontime	9772.9929258227	Sum of GTIs [s]
caldbver	4.4.8	&#160	ontime0	9769.7288254797	Sum of GTIs [s]
date	2012-03-24T06:05:37	Date and time of file creation	ontime1	9769.7698356509	Sum of GTIs [s]
revision	2	Processing version of data	ontime2	9766.6698852777	Sum of GTIs [s]
			ontime3	9772.9929258227	Sum of GTIs [s]
			ontime6	9766.546775341	Sum of GTIs [s]
			l1events	339559	Number of level 1 events

### 2.1.4 Events

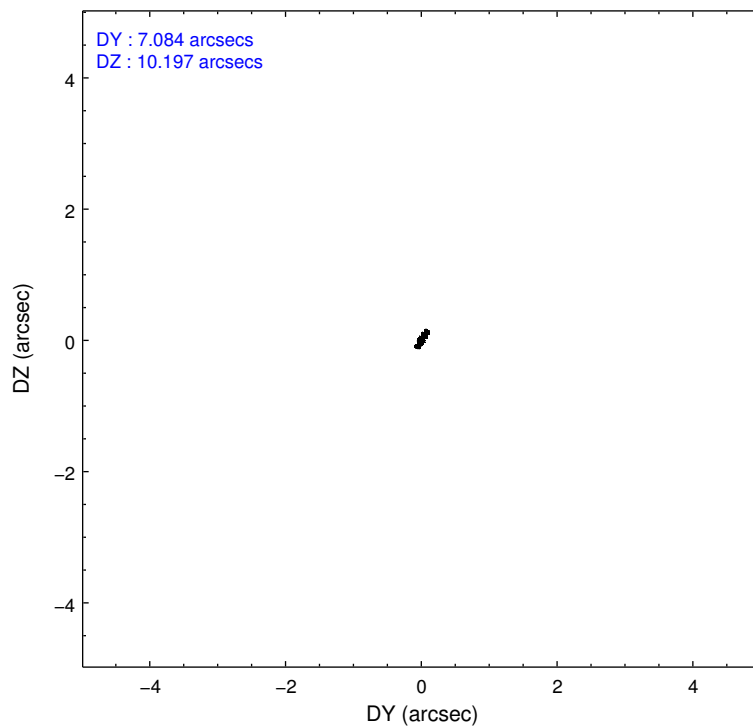
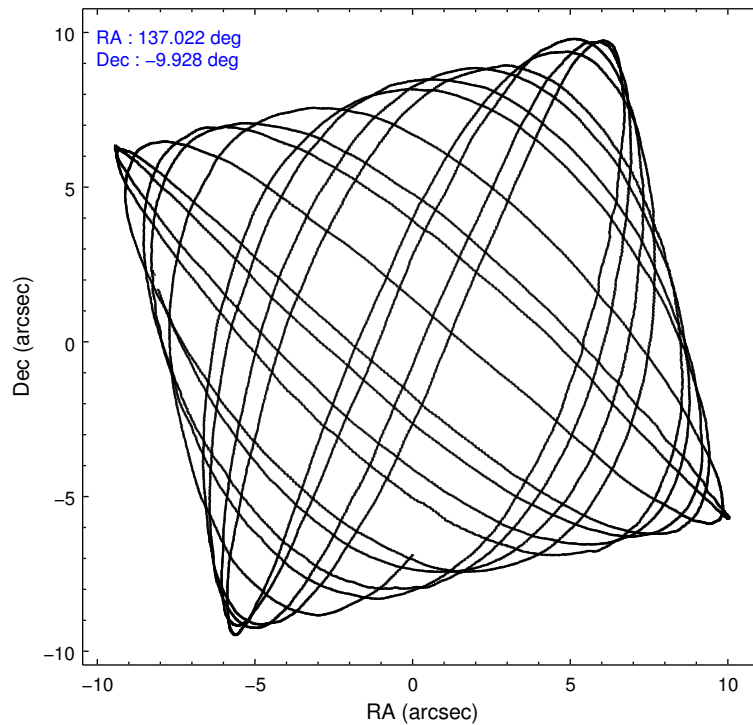
	ccd 0	ccd 1	ccd 2	ccd 3	ccd 6
level 1 events	63101	67442	72333	66269	70414
rejected events	55657	56858	64451	59285	59157
rejected %	88%	84%	89%	89%	84%

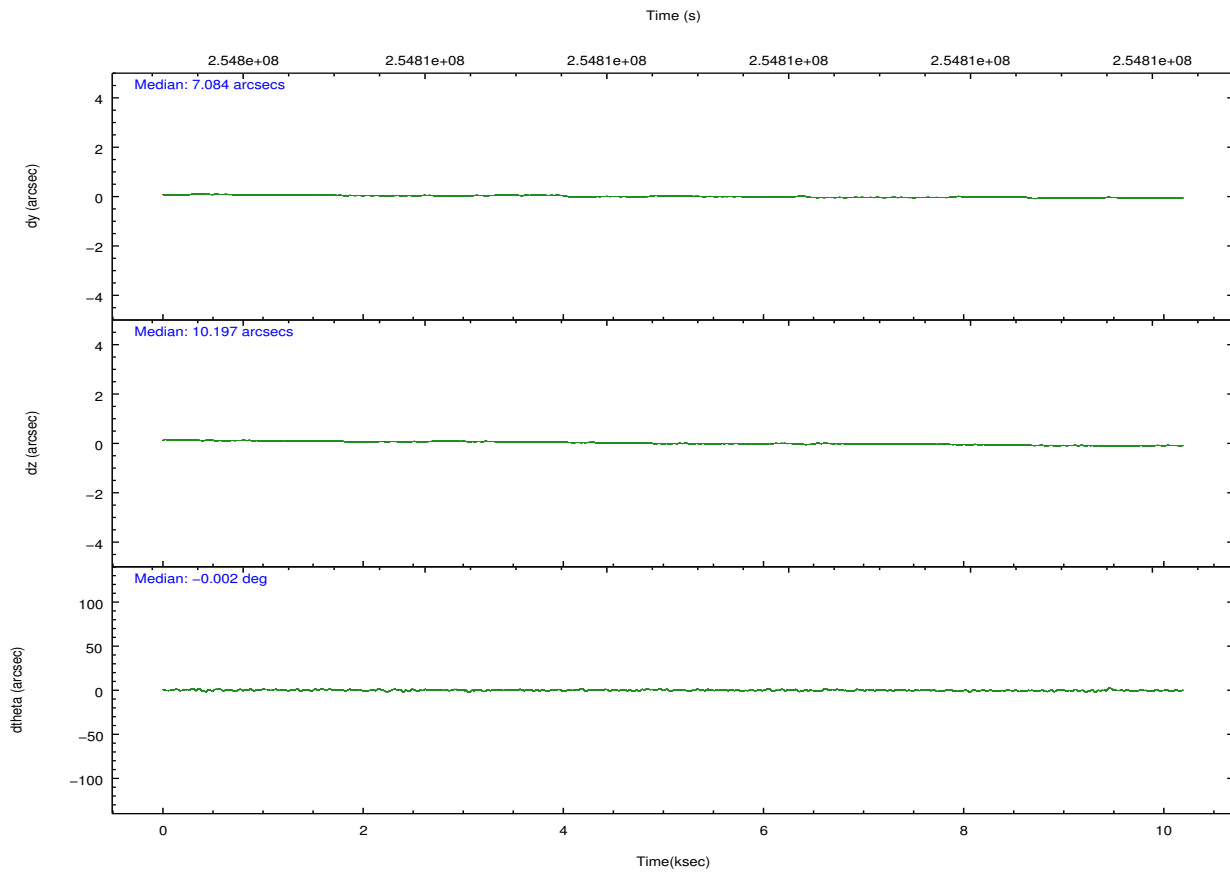
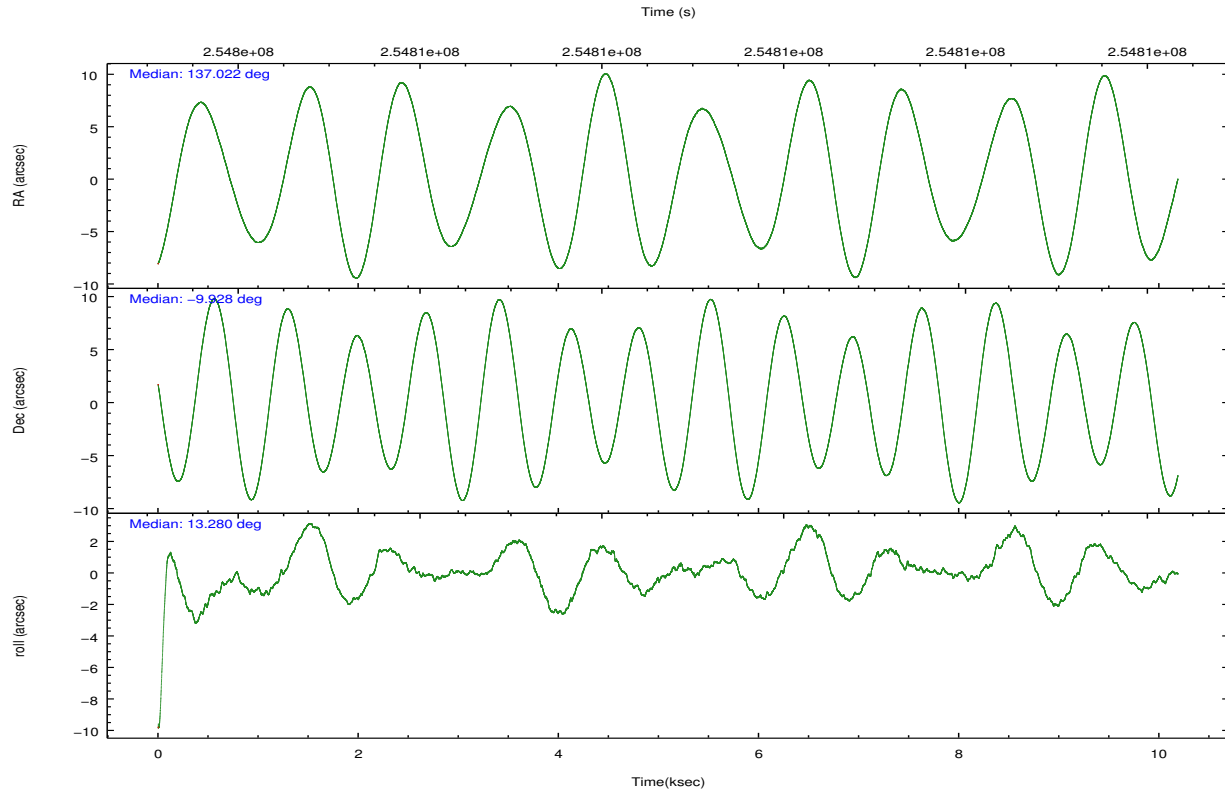
	ccd 0	ccd 1	ccd 2	ccd 3	ccd 6
grade 0 events	2934	5087	3379	2724	6102
	4%	7%	4%	4%	8%
grade 1 events	37	187	40	40	63
	0%	0%	0%	0%	0%
grade 2 events	1673	2046	1750	1405	1810
	2%	3%	2%	2%	2%
grade 3 events	803	919	794	767	880
	1%	1%	1%	1%	1%
grade 4 events	764	930	757	759	910
	1%	1%	1%	1%	1%
grade 5 events	2365	2712	2142	2725	2721
	3%	4%	2%	4%	3%
grade 6 events	1273	1605	1210	1331	1562
	2%	2%	1%	2%	2%
grade 7 events	53252	53956	62261	56518	56366
	84%	80%	86%	85%	80%

## 2.2 Compared Parameters

Parameter	Planned	Actual	Parameter	Planned	Actual
Instrument	ACIS	ACIS	Obspar format version number	7	7
Detector	ACIS-01236	ACIS-01236	Obspar file type	PREDICTED	ACTUAL
Grating	NONE	NONE	Obspar update status	NONE	UPDATED
Data mode	VFAINT	VFAINT	Number of optional ACIS chips dropped	0	0
Observation mode	POINTING	POINTING	On-chip summing requested	N	N
[deg] Pointing RA	137.001565	137.021715239632	Subarray requested	NONE	NONE
[deg] Pointing Dec	-9.947133	-9.928299938127584	Alternating exposures requested	N	N
[deg] Pointing Roll	13.070887	13.28305701230924	[s] Primary exposure time	0.000000	3.1
[mm] SIM focus pos	-0.782348	-0.7809083437167272			
[mm] SIM defocus	0	0.001439871863259334			
[mm] SIM translation stage pos	-233.592463	-233.5874344608287			
[mm] SIM translation stage offset	0	-0.005018542100998502			
[s] Observation start time (MET)	254803824.184000	254803447.07453			
Observation start date	2006-01-28T02:49:19	2006-01-28T02:44:07			
[s] Observation end time (MET)	254813824.184000	254814633.41255			
Observation end date	2006-01-28T05:35:59	2006-01-28T05:50:33			
Read mode	TIMED	TIMED			

## 2.3 Aspect



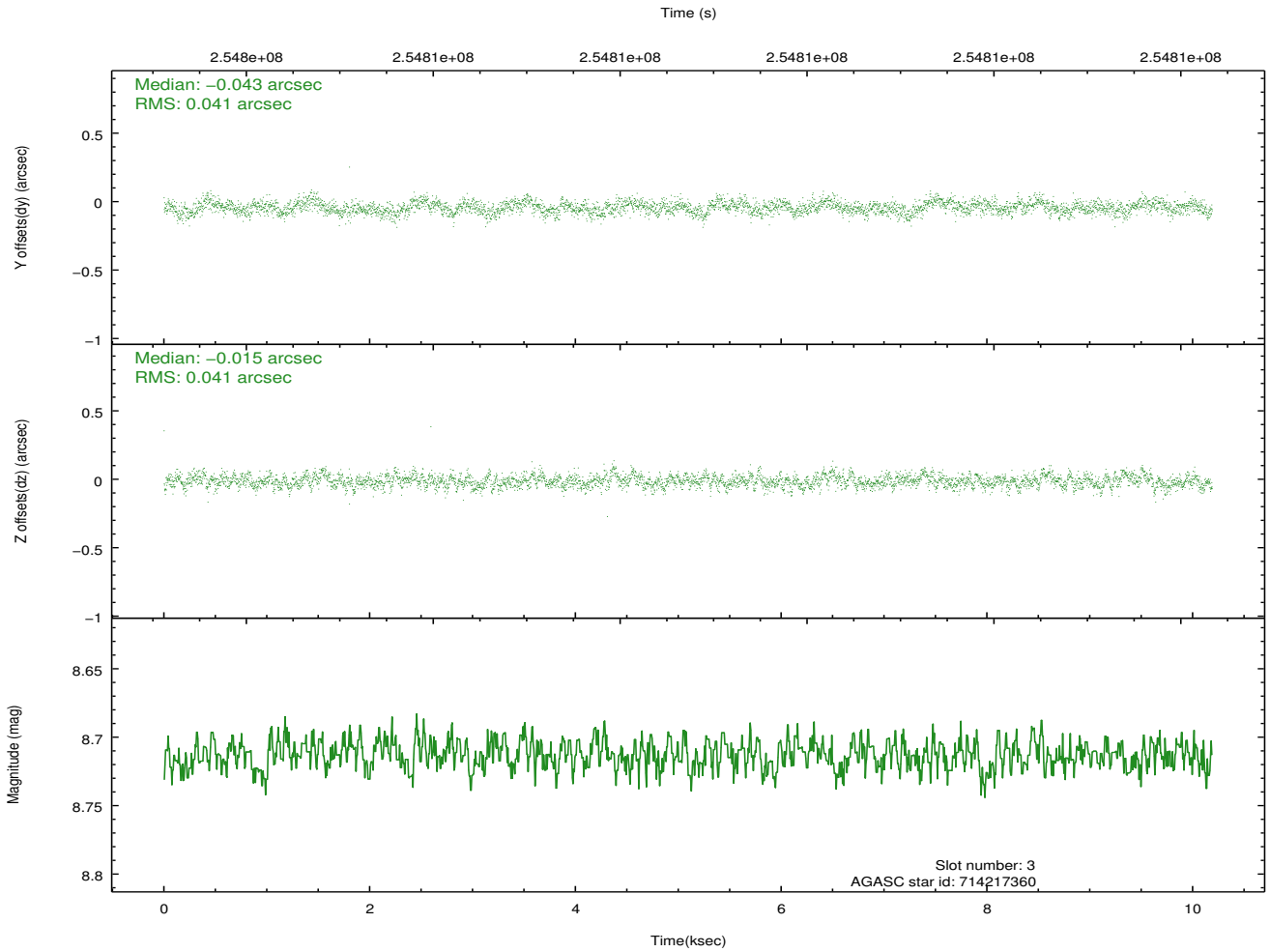
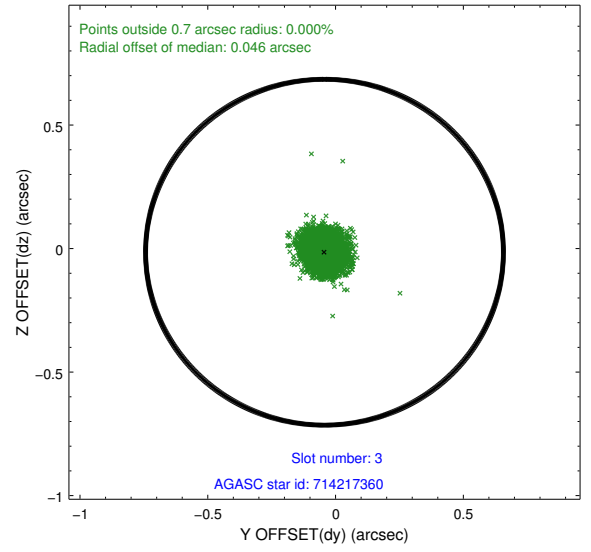
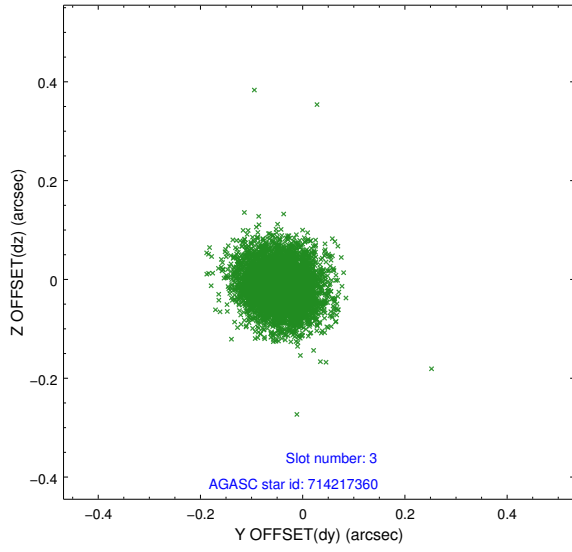


### Slot Statistics

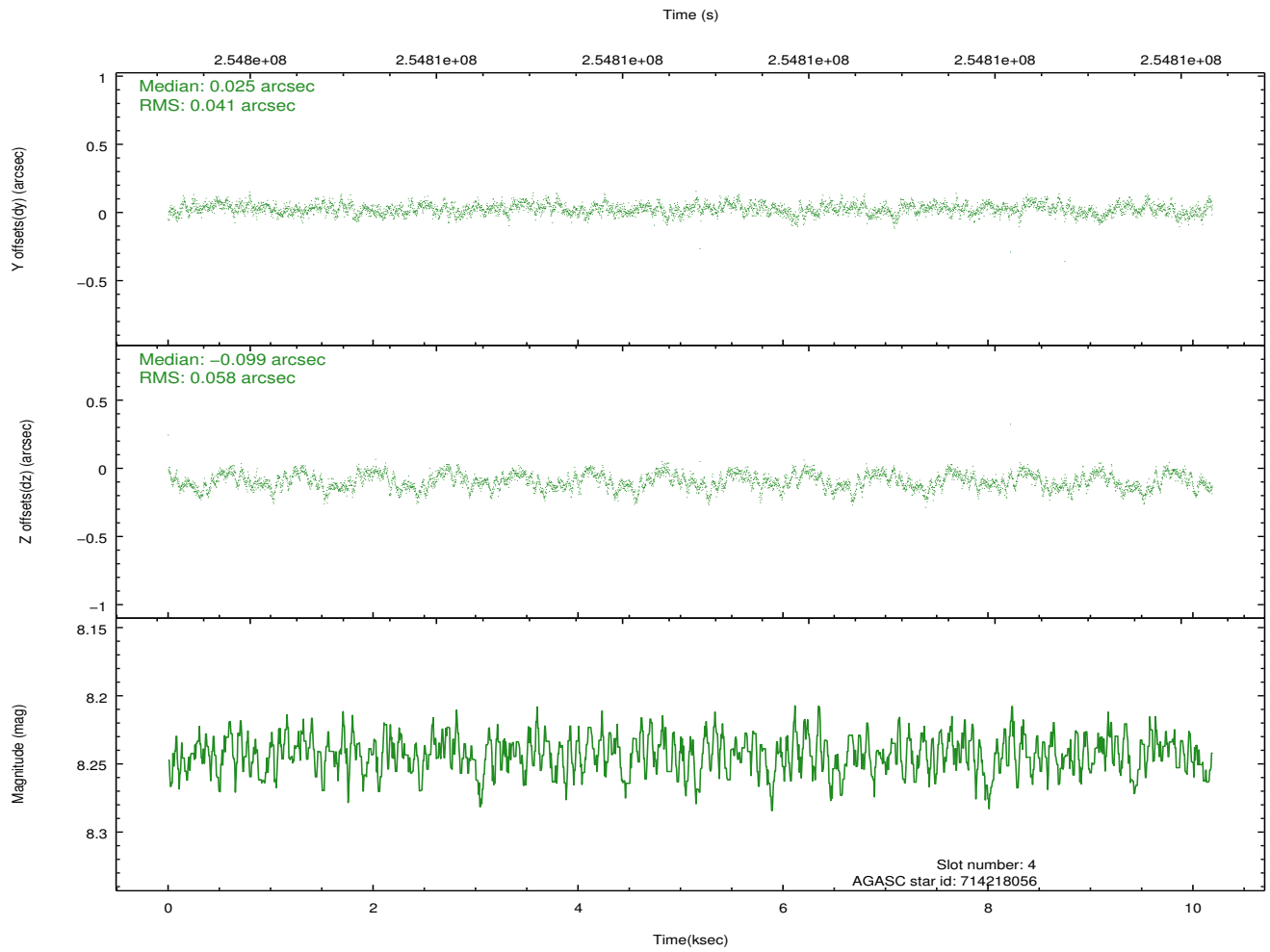
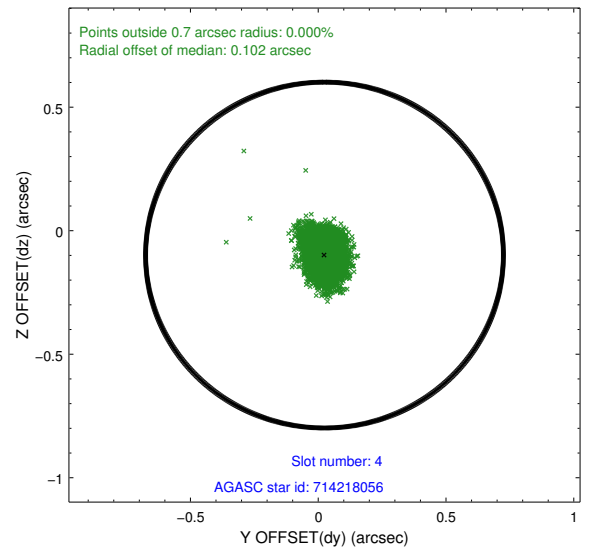
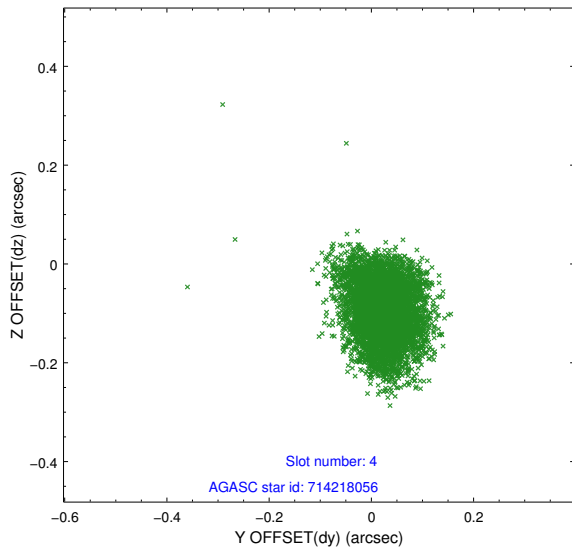
slot	status	id	mag	n_pts	med_dy	med_dz	dr1	dr2	ra	dec	mean_y	mean_z
0	FID	ACIS-I-2	7.14	2486	-0.067	-0.078	0.009	0.017	0.000000	0.000000	-761.66	-840.12
1	FID	ACIS-I-4	7.18	2484	0.144	0.065	0.007	0.012	0.000000	0.000000	2152.39	1065.91
2	FID	ACIS-I-5	7.22	2486	-0.178	0.083	0.009	0.015	0.000000	0.000000	-1814.91	1064.40
3	GUIDE	714217360	8.71	4969	-0.043	-0.015	0.061	0.099	137.273046	-10.133687	785.54	-871.83
4	GUIDE	714218056	8.24	4971	0.025	-0.099	0.075	0.119	136.949916	-9.853677	-101.85	369.17
5	GUIDE	714220280	8.37	4964	0.017	0.079	0.056	0.091	136.555086	-10.133194	-1692.62	-295.30
6	GUIDE	714221984	8.27	4971	0.043	-0.053	0.054	0.091	136.295010	-9.704004	-2245.00	1417.12
7	GUIDE	714222888	7.22	4970	-0.040	0.088	0.059	0.094	137.419411	-9.937881	1450.33	-302.83

## 2.4 Star Slots

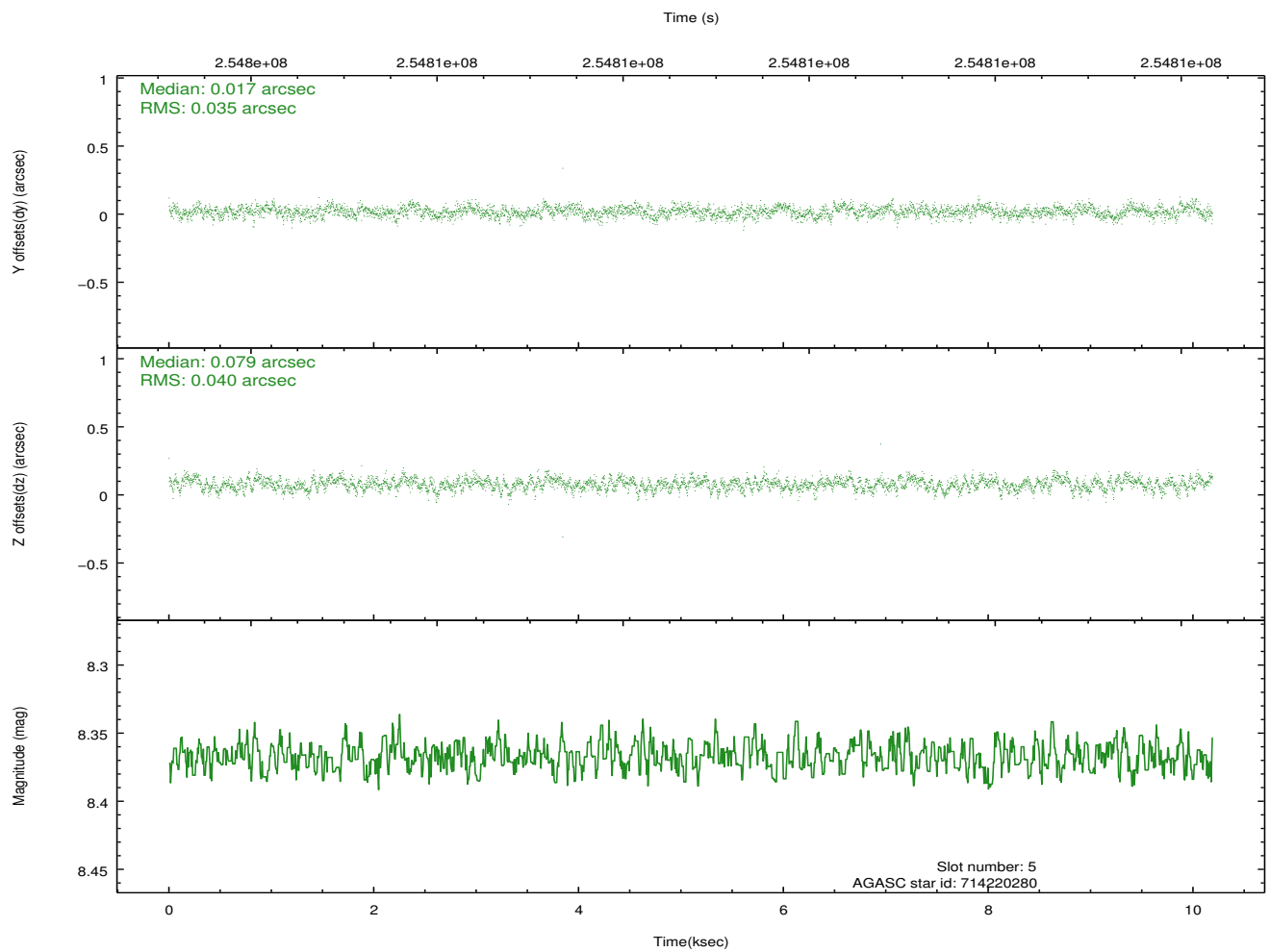
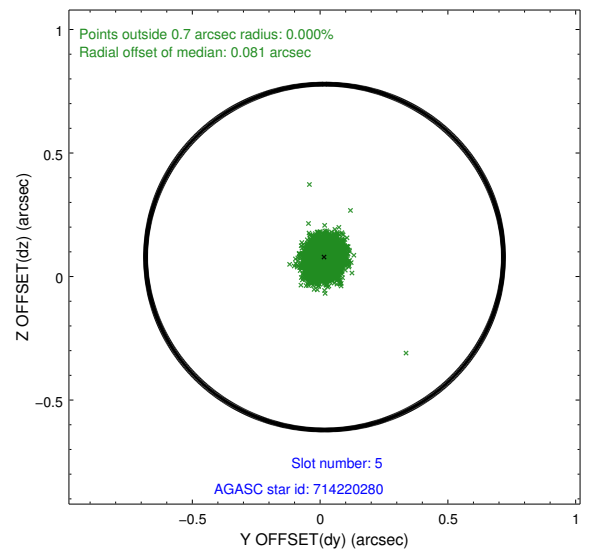
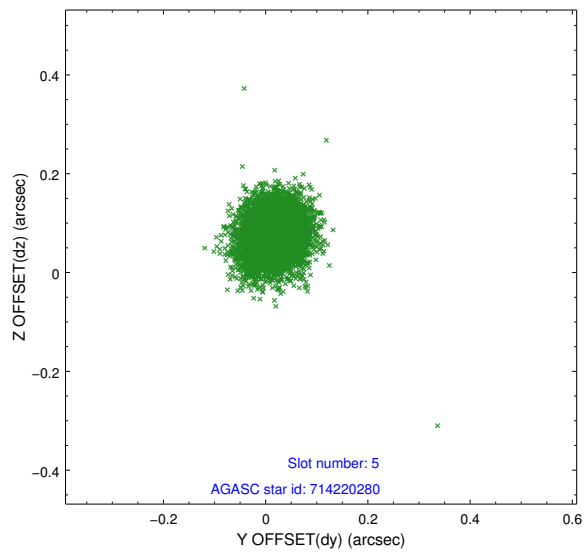
### 2.4.1 Slot 3



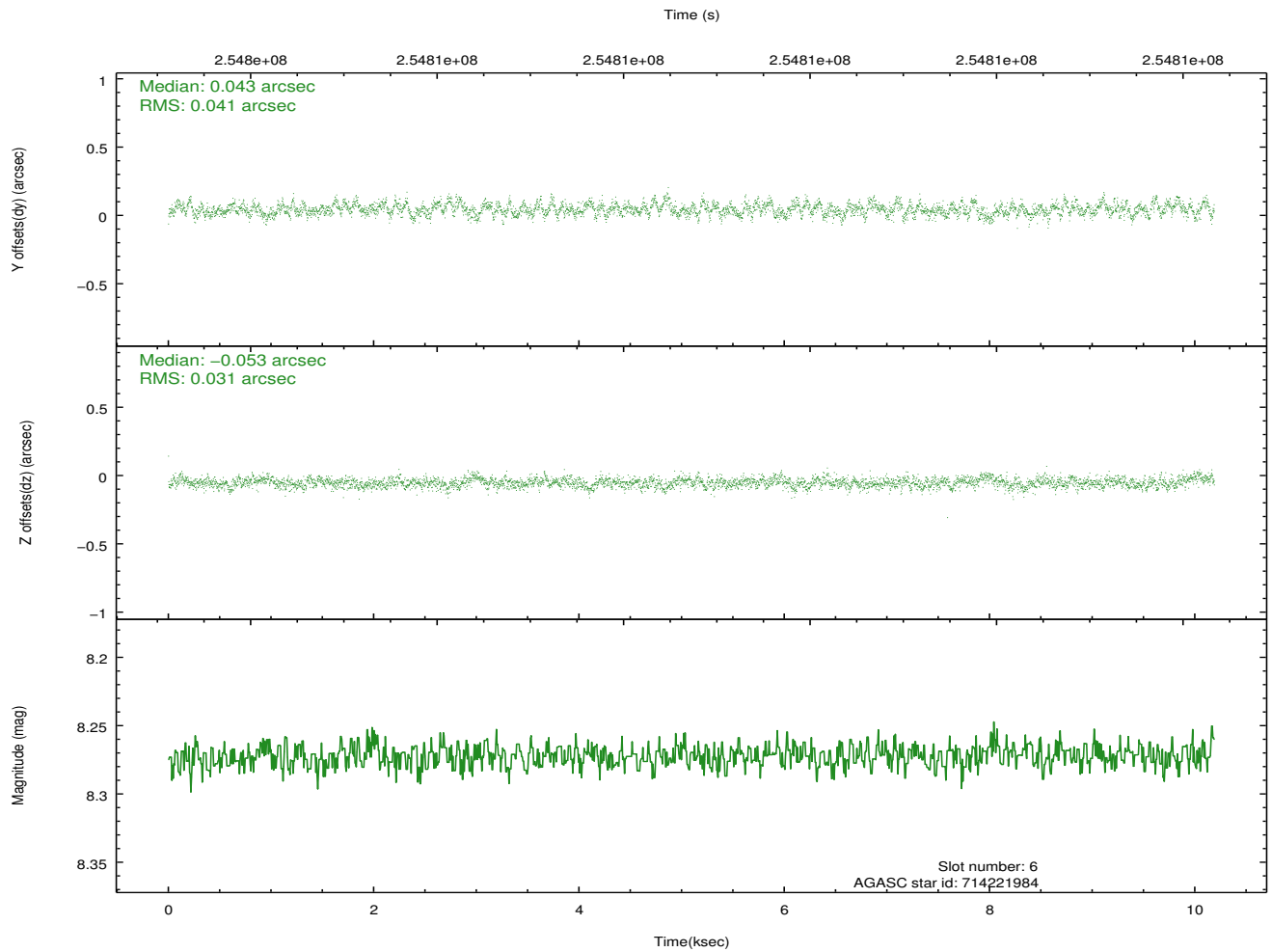
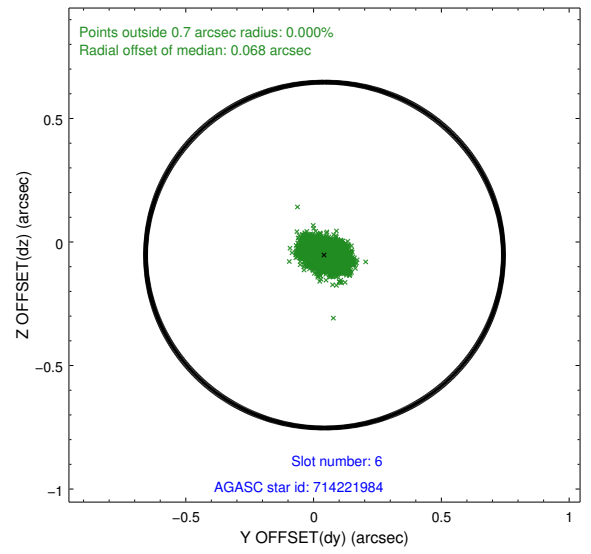
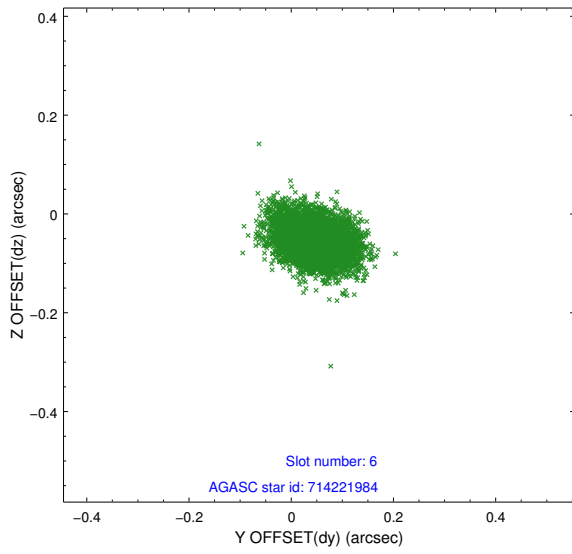
### 2.4.2 Slot 4



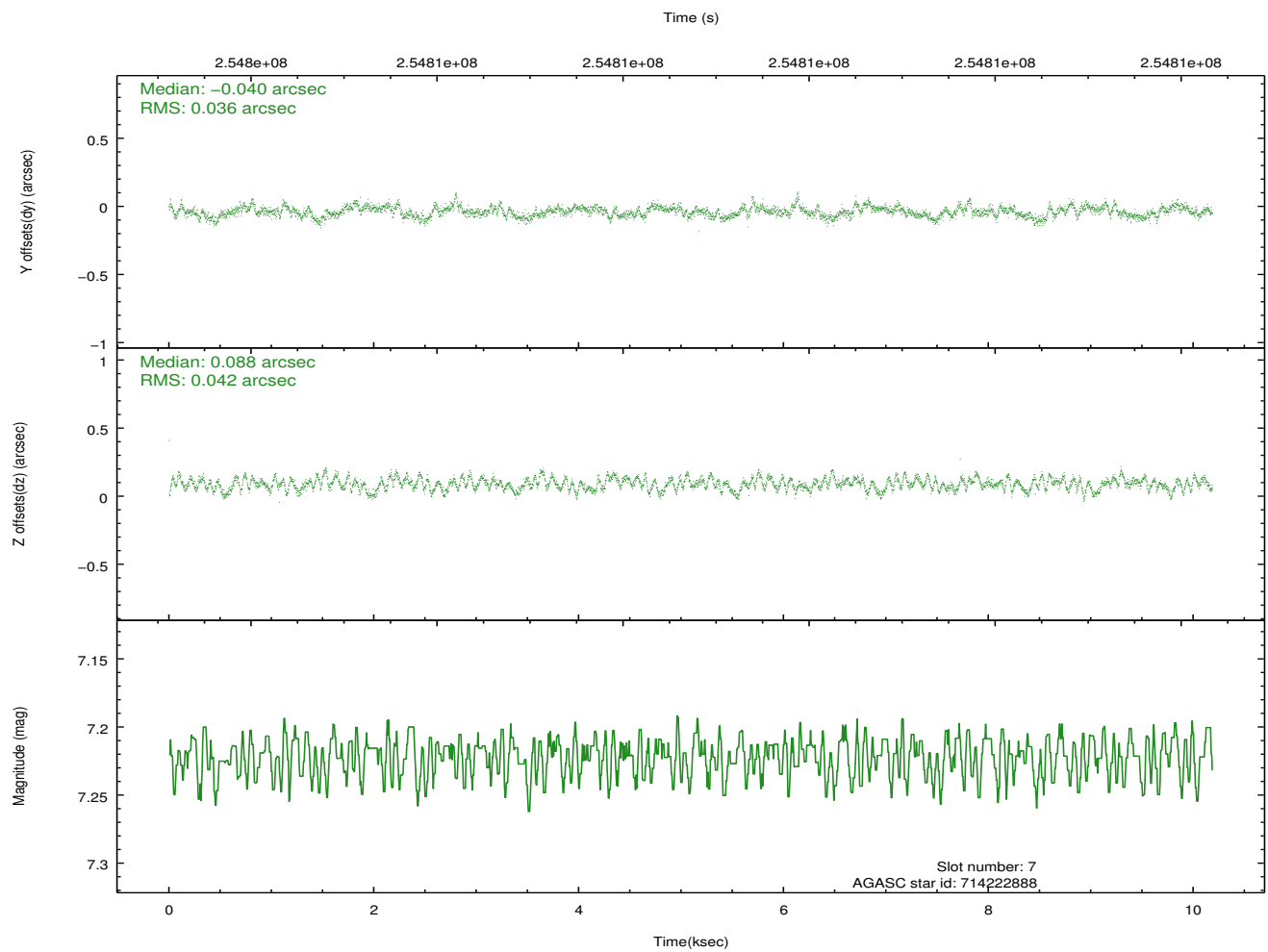
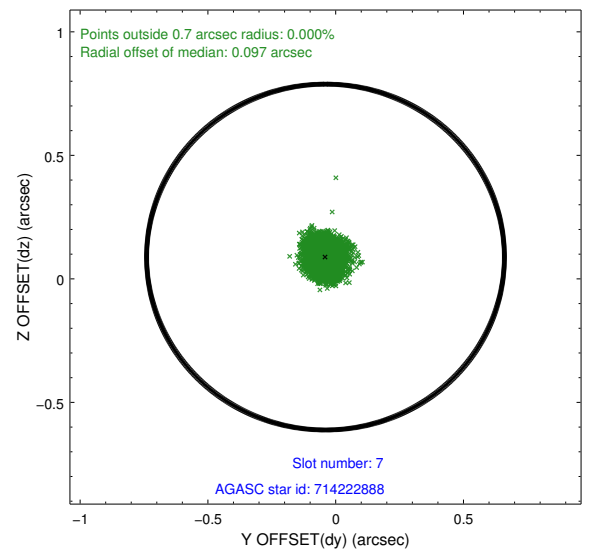
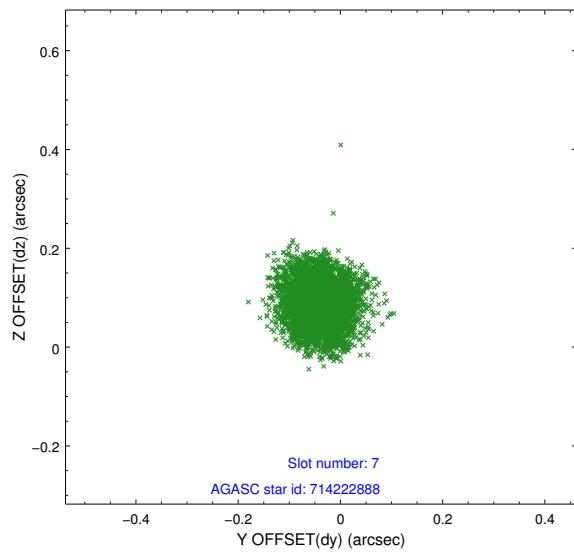
### 2.4.3 Slot 5



### 2.4.4 Slot 6

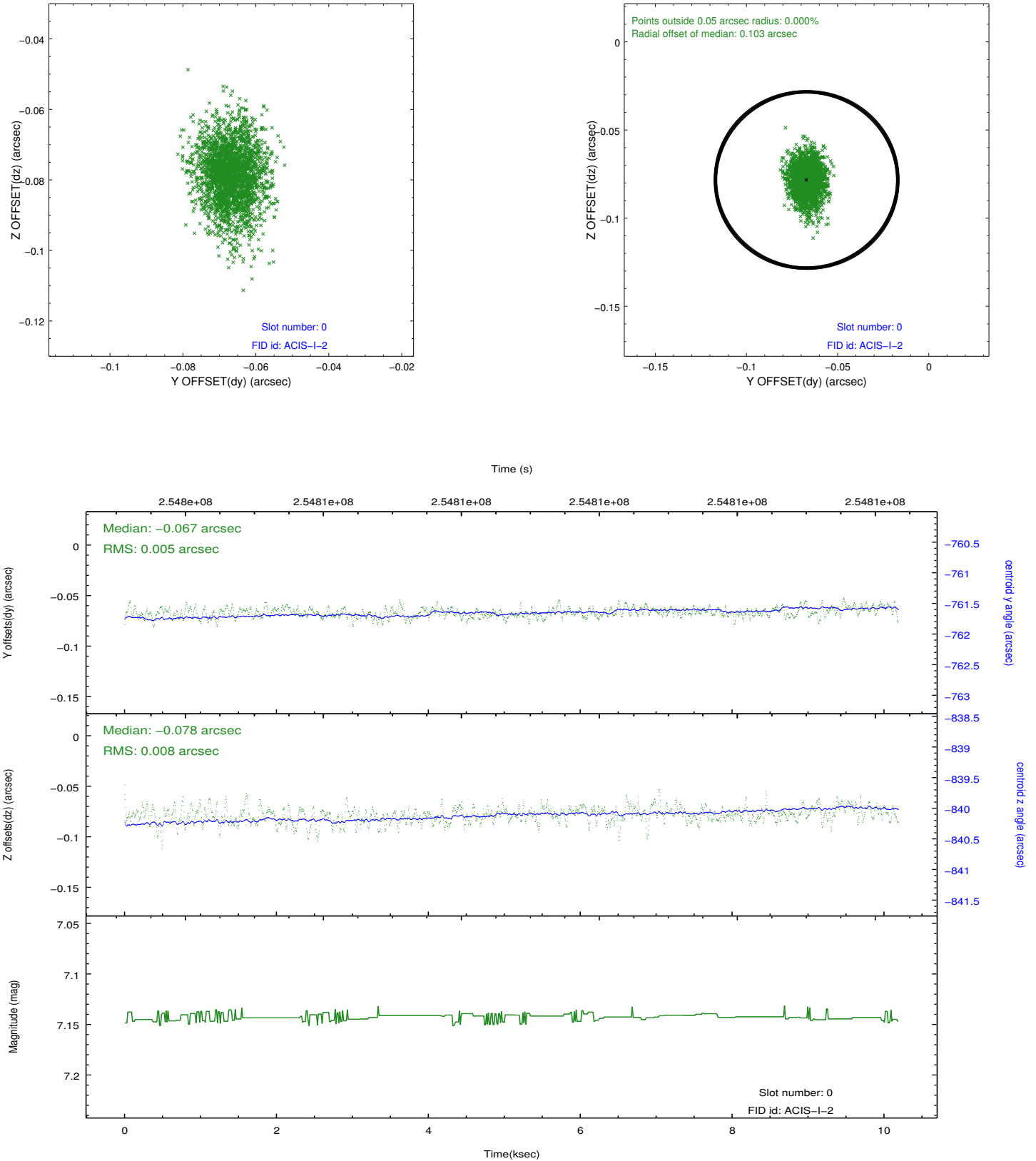


## 2.4.5 Slot 7

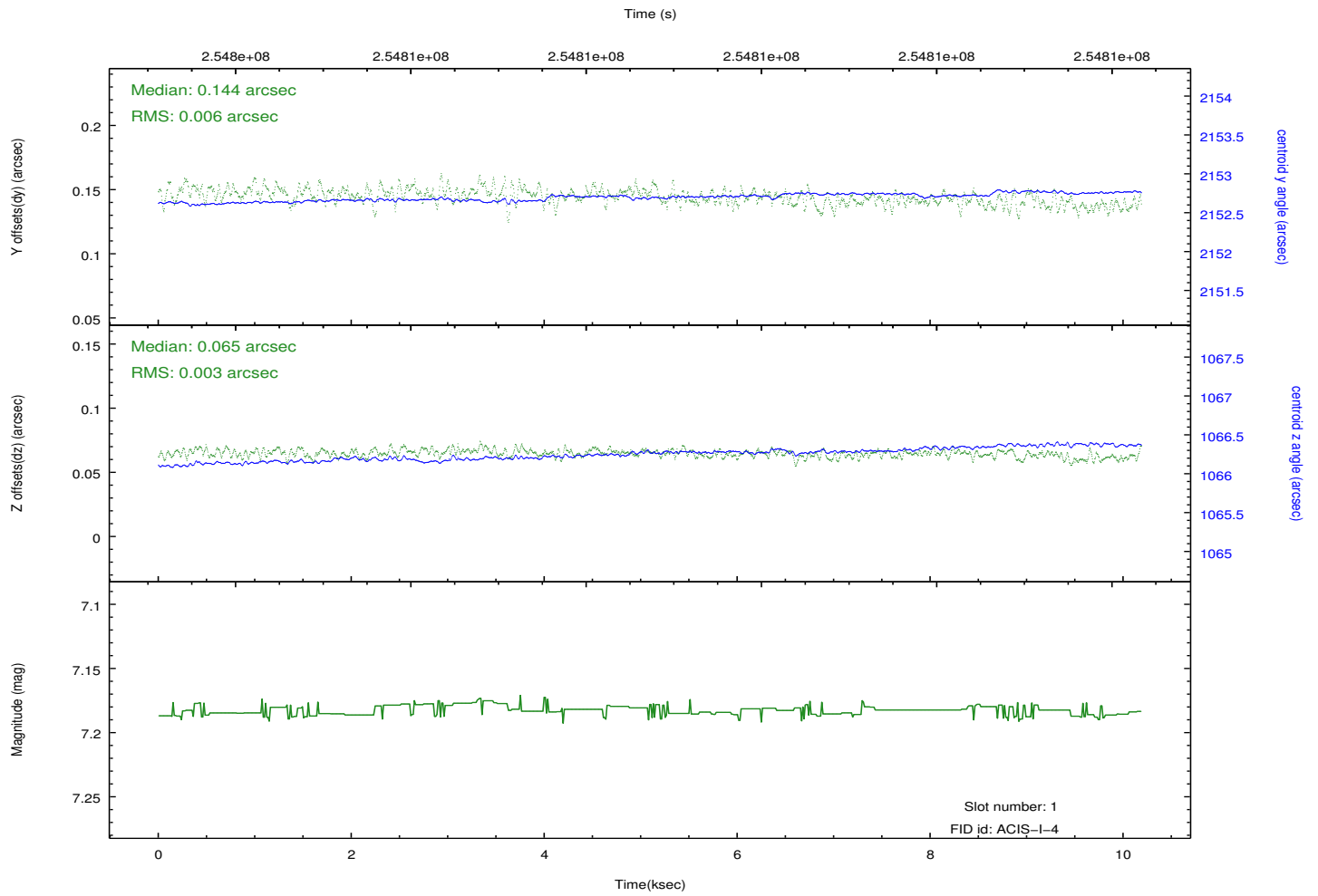
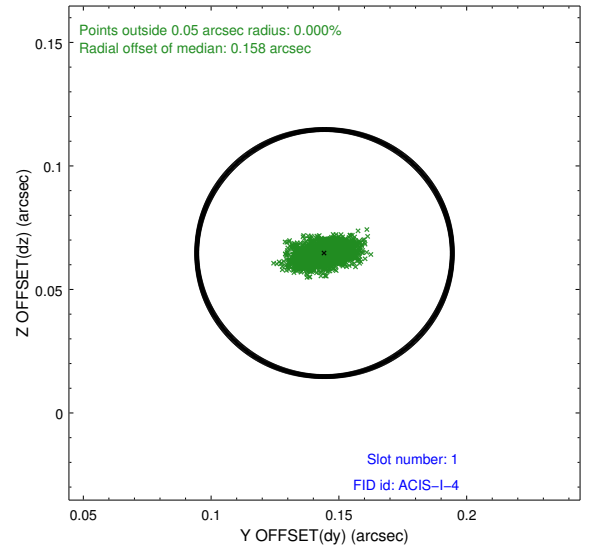
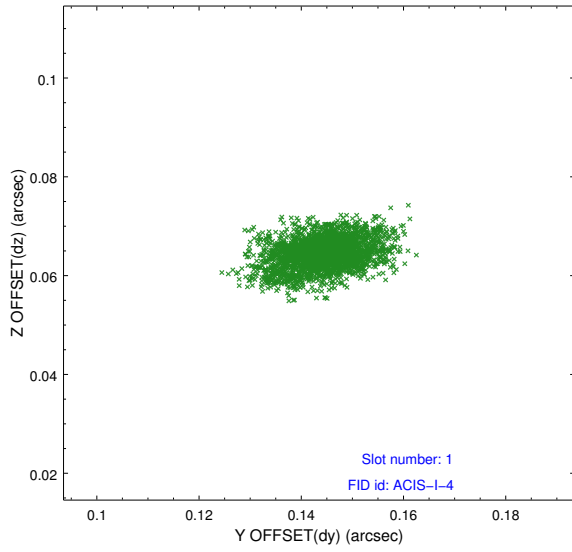


## 2.5 FID Slots

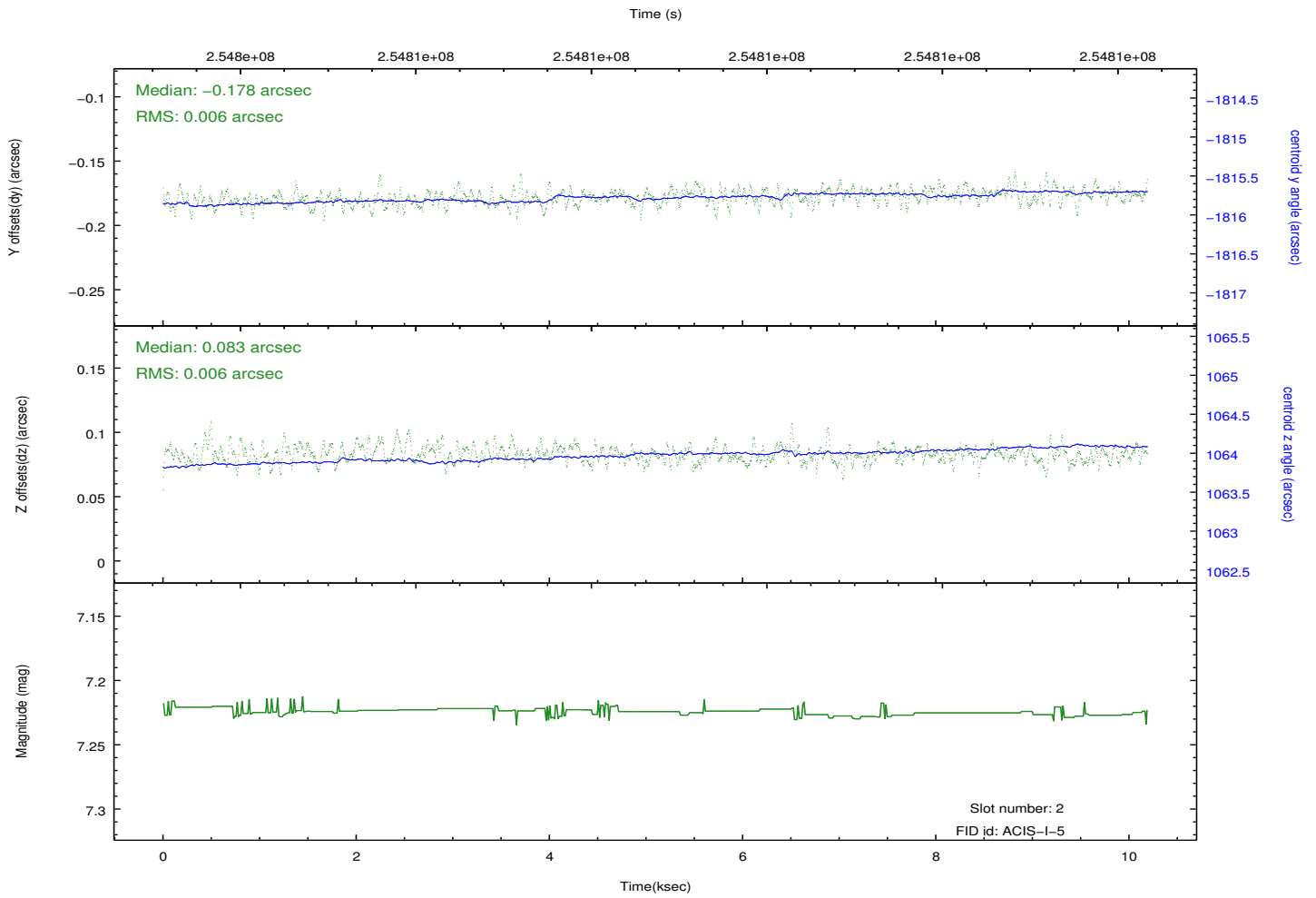
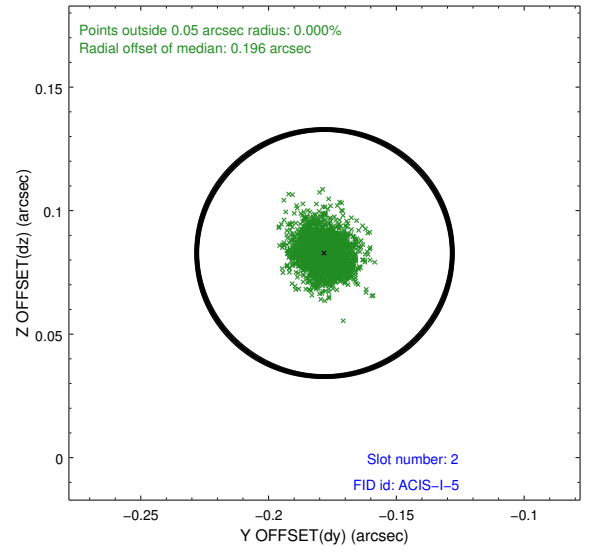
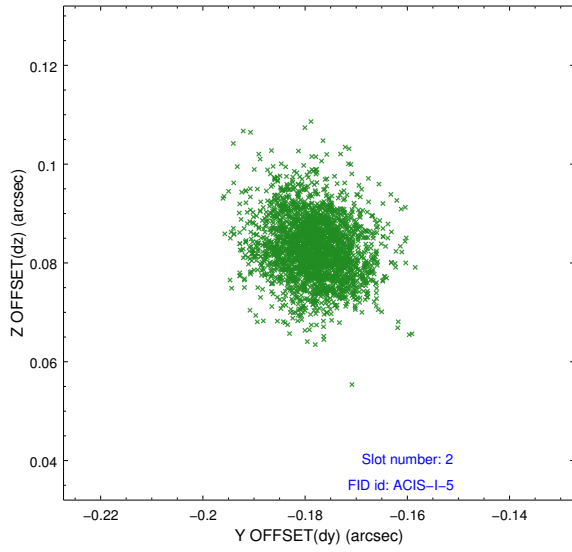
### 2.5.1 Slot 0



## 2.5.2 Slot 1



### 2.5.3 Slot 2



# A Summary

## A.1 Status

V&V Scientist	Jen Lauer
V&V Date (YYYY-MM-DD)	2012.03.26
V&V Edition	1
V&V Disposition and Status	OK
V&V Charge Time	9.77429998

## A.2 Comments