

# V&V Reference Report

## L2 ASCDS Version : 8.4.3.1

Observation 6845 - L2 Version 2  
Chandra X-Ray Center

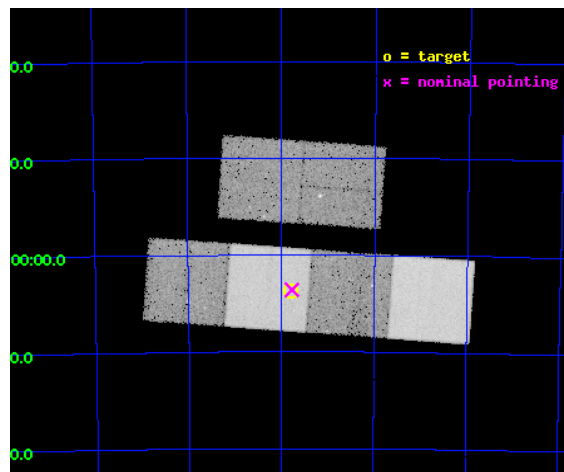
L2 Processing Date : Apr 1 2012

## Contents

<b>1</b>	<b>Front</b>	<b>2</b>
<b>2</b>	<b>OBI</b>	<b>3</b>
2.1	OBI . . . . .	3
2.1.1	Images . . . . .	3
2.1.2	Bias . . . . .	3
2.1.3	Parameters . . . . .	4
2.1.4	Events . . . . .	4
2.2	Compared Parameters . . . . .	5
2.3	Aspect . . . . .	6
2.4	Star Slots . . . . .	9
2.4.1	Slot 3 . . . . .	9
2.4.2	Slot 4 . . . . .	10
2.4.3	Slot 5 . . . . .	11
2.4.4	Slot 6 . . . . .	12
2.4.5	Slot 7 . . . . .	13
2.5	FID Slots . . . . .	14
2.5.1	Slot 0 . . . . .	14
2.5.2	Slot 1 . . . . .	15
2.5.3	Slot 2 . . . . .	16
<b>A</b>	<b>Summary</b>	<b>17</b>
A.1	Status . . . . .	17
A.2	Comments . . . . .	17

# 1 Front

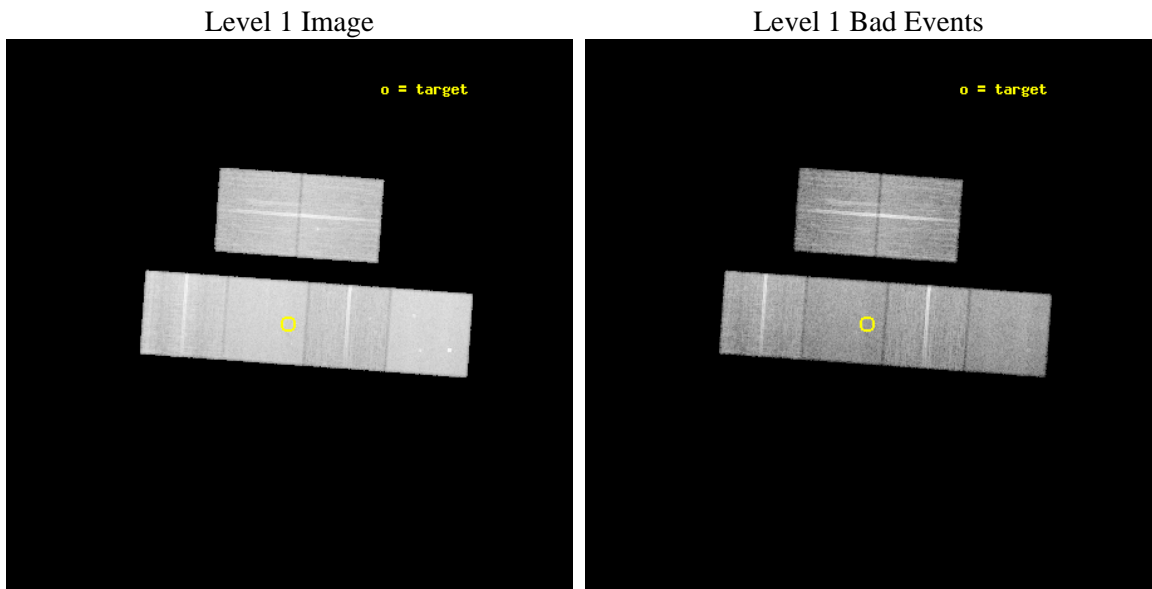
seq_num	701263	Sequence number
obs_id	6845	Observation id
title	Unveiling obscured AGNs in close pairs of similar sized galaxies	P
observer	Dr. Nora Loiseau	Principal investigator
object	AM 0337-711	Source name
dtcycle	0	&#160
cycle	P	events from which exps? Prim/Second/Both
ra_targ	54.447917	Observer's specified target RA [deg]
dec_targ	-71.061389	Observer's specified target Dec [deg]
ra_nom	54.443719692418	Nominal RA [deg]
dec_nom	-71.059791517679	Nominal Dec [deg]
roll_nom	184.07262255852	Nominal Roll [deg]
revision	2	Processing version of data
ontime	20038.399925351	Sum of GTIs [s]
livetime	19784.66163982	Livetime [s]
ontime2	20038.399925351	Sum of GTIs [s]
ontime3	20038.399925351	Sum of GTIs [s]
ontime5	20038.399925351	Sum of GTIs [s]
ontime6	20038.399925351	Sum of GTIs [s]
ontime7	20038.399925351	Sum of GTIs [s]
ontime8	20038.399925351	Sum of GTIs [s]
l2events	290232	Number of level 2 events



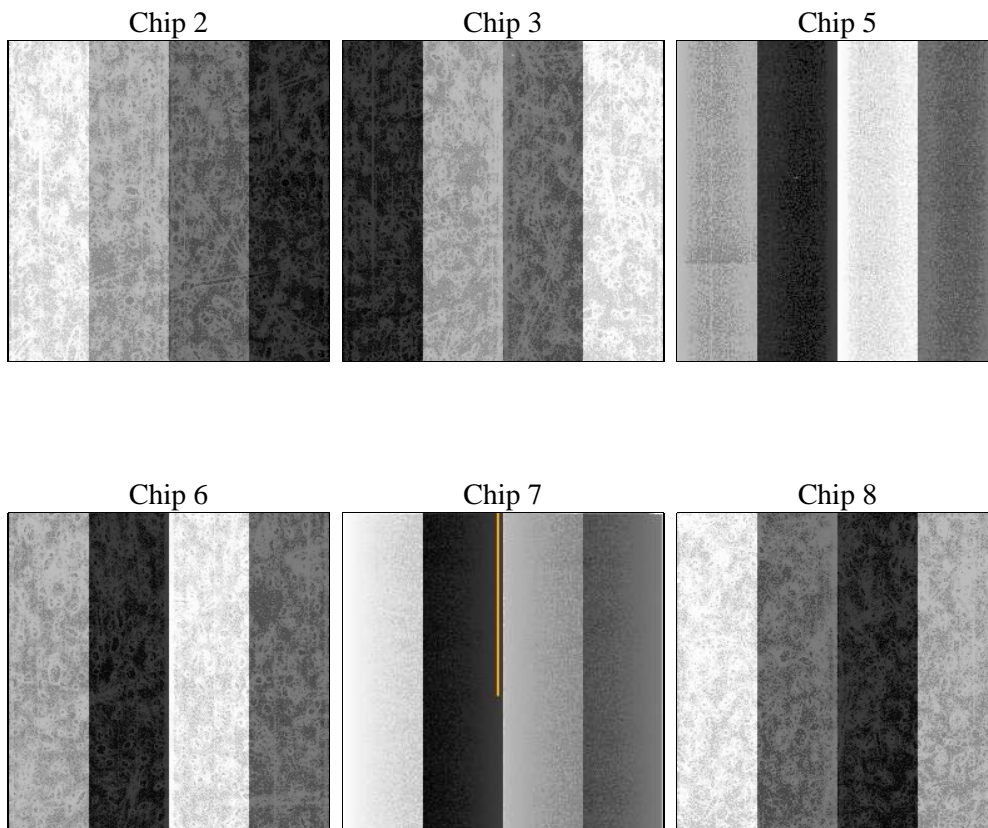
## 2 OBI

### 2.1 OBI

#### 2.1.1 Images



#### 2.1.2 Bias



### 2.1.3 Parameters

obi_num	0	Obi number	sched_exp_time	20000.000000	[s] Scheduled observation exposure time
ascdsver	8.4.3	Processing system revision	ontime	20038.399925351	Sum of GTIs [s]
caldbver	4.4.9	&#160	ontime2	20038.399925351	Sum of GTIs [s]
date	2012-04-01T05:11:46	Date and time of file creation	ontime3	20038.399925351	Sum of GTIs [s]
revision	2	Processing version of data	ontime5	20038.399925351	Sum of GTIs [s]
			ontime6	20038.399925351	Sum of GTIs [s]
			ontime7	20038.399925351	Sum of GTIs [s]
			ontime8	20038.399925351	Sum of GTIs [s]
			l1events	1264459	Number of level 1 events

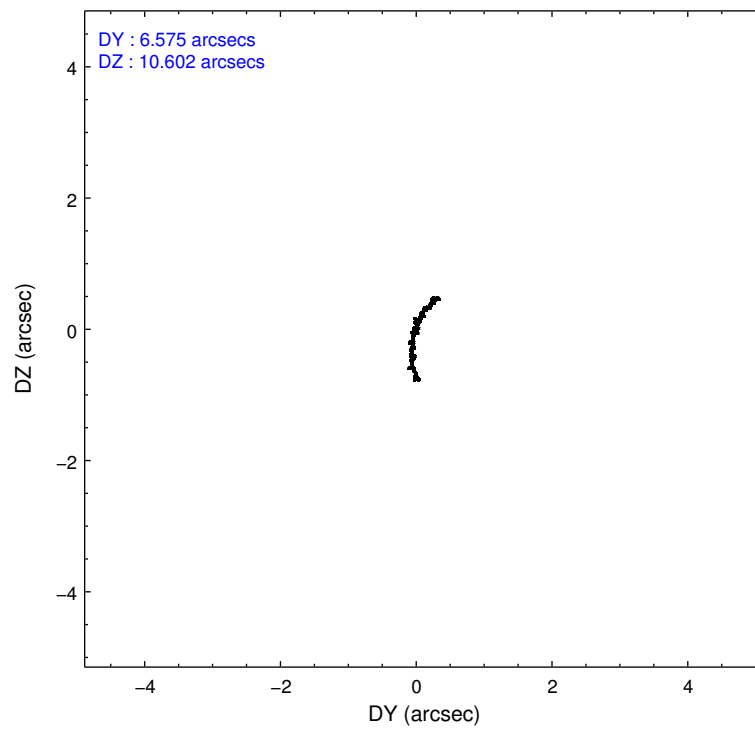
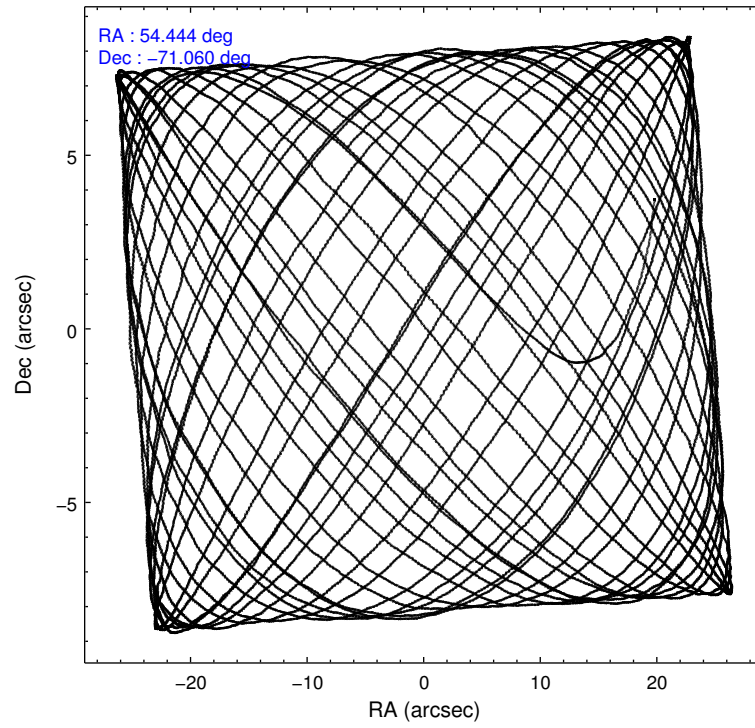
### 2.1.4 Events

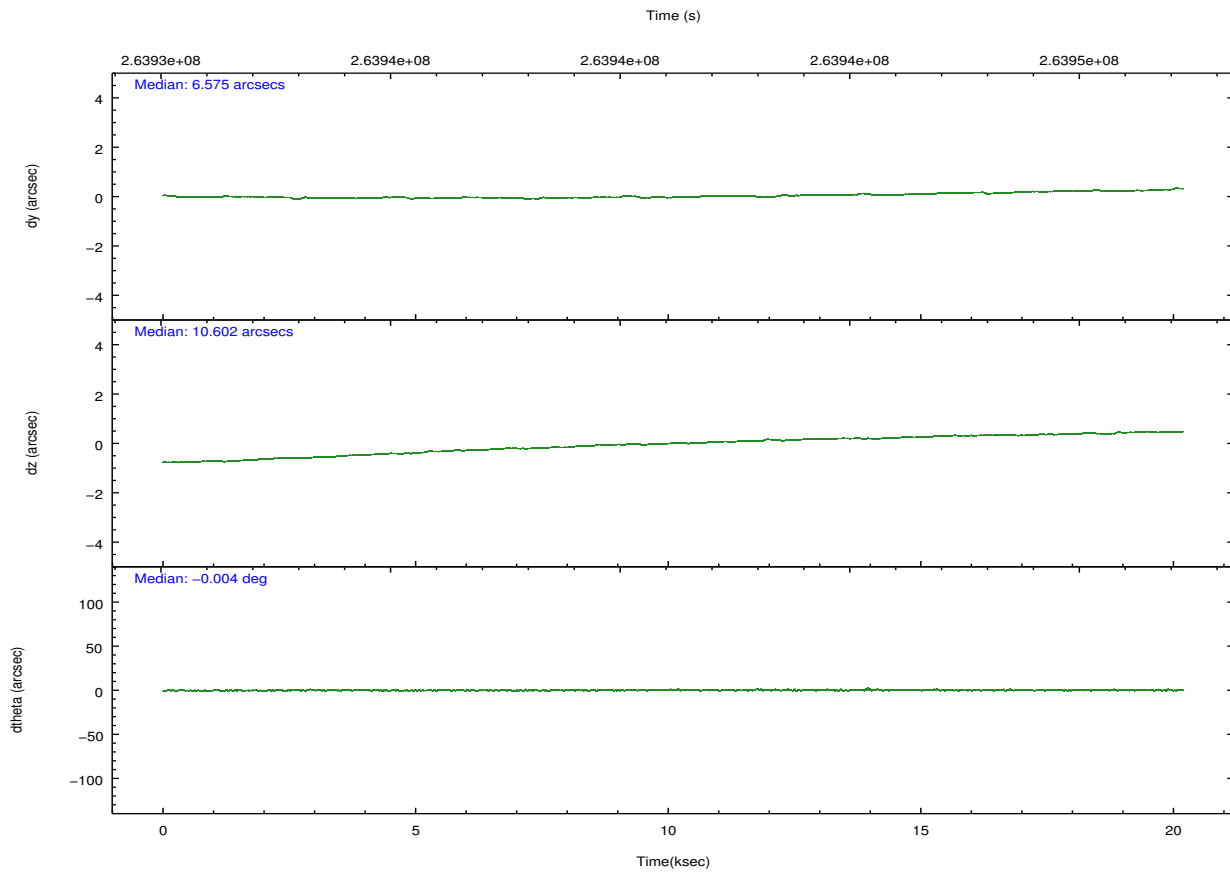
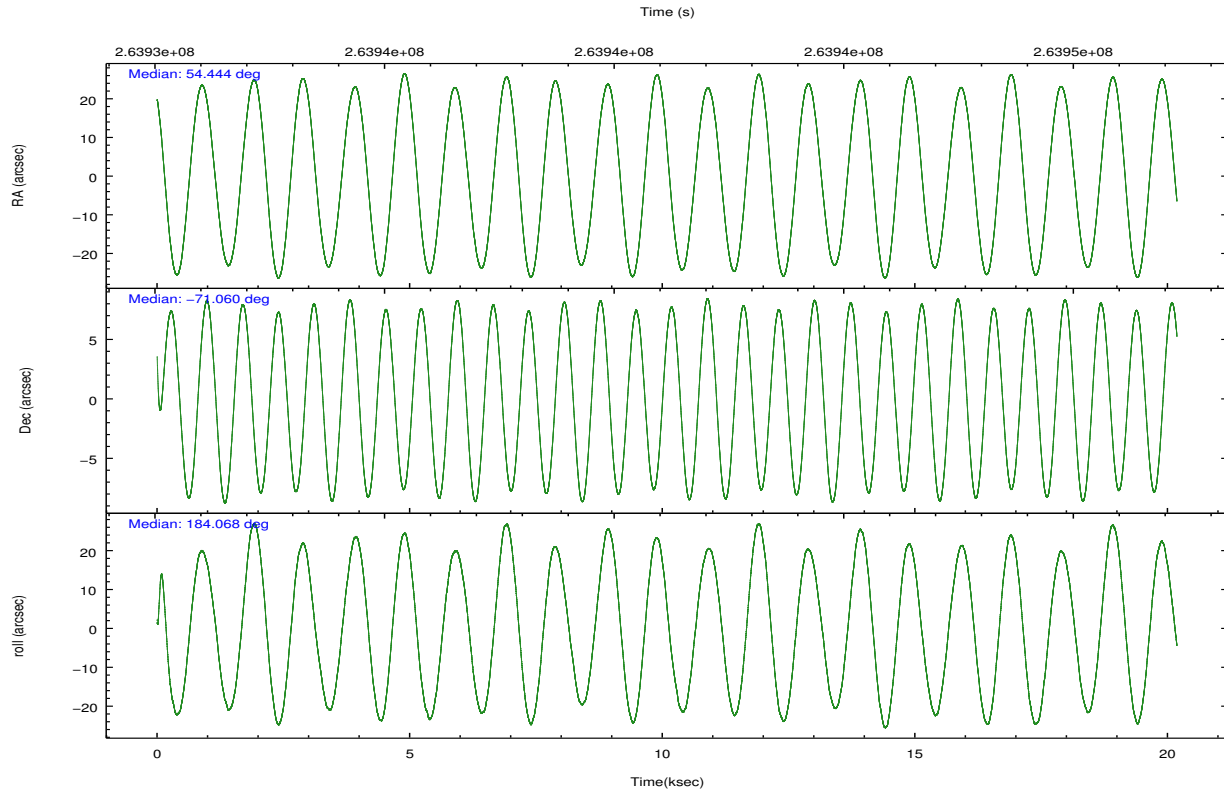
	ccd 2	ccd 3	ccd 5	ccd 6	ccd 7	ccd 8		ccd 2	ccd 3	ccd 5	ccd 6	ccd 7	ccd 8
level 1 events	183232	171728	263248	180793	240530	224928	grade 0 events	9431	8878	9367	8398	8840	15870
rejected events	161845	151028	142936	159623	139156	175047		5%	5%	3%	4%	3%	7%
rejected %	88%	87%	54%	88%	57%	77%	grade 1 events	122	118	456	92	248	162
								0%	0%	0%	0%	0%	0%
							grade 2 events	4473	3988	36613	4551	20525	11040
								2%	2%	13%	2%	8%	4%
							grade 3 events	1904	2067	4787	2048	8794	5126
								1%	1%	1%	1%	3%	2%
							grade 4 events	1972	2034	4704	1924	8799	4752
								1%	1%	1%	1%	3%	2%
							grade 5 events	6784	7725	19404	8340	22552	10893
								3%	4%	7%	4%	9%	4%
							grade 6 events	3619	3736	64868	4256	54442	13101
								1%	2%	24%	2%	22%	5%
							grade 7 events	154927	143182	123049	151184	116330	163984
								84%	83%	46%	83%	48%	72%

## 2.2 Compared Parameters

Parameter	Planned	Actual	Parameter	Planned	Actual
Instrument	ACIS	ACIS	Obspar format version number	7	7
Detector	ACIS-235678	ACIS-235678	Obspar file type	PREDICTED	ACTUAL
Grating	NONE	NONE	Obspar update status	NONE	UPDATED
Data mode	FAINT	FAINT	Number of optional ACIS chips dropped	0	0
Observation mode	POINTING	POINTING	On-chip summing requested	N	N
[deg] Pointing RA	54.512521	54.4437196924184	Subarray requested	NONE	NONE
[deg] Pointing Dec	-71.044249	-71.05979151767899	Alternating exposures requested	N	N
[deg] Pointing Roll	183.981081	184.0726225585244	[s] Primary exposure time	0.000000	3.2
[mm] SIM focus pos	-0.684267	-0.6828225247311905			
[mm] SIM defocus	0	0.001444936568705701			
[mm] SIM translation stage pos	-190.132523	-190.1400660498719			
[mm] SIM translation stage offset	0	0.00754346686406393			
[s] Observation start time (MET)	263931245.184000	263930240.19923			
Observation start date	2006-05-13T18:13:00	2006-05-13T17:57:20			
[s] Observation end time (MET)	263951245.184000	263951933.81274			
Observation end date	2006-05-13T23:46:20	2006-05-13T23:58:53			
Read mode	TIMED	TIMED			

## 2.3 Aspect



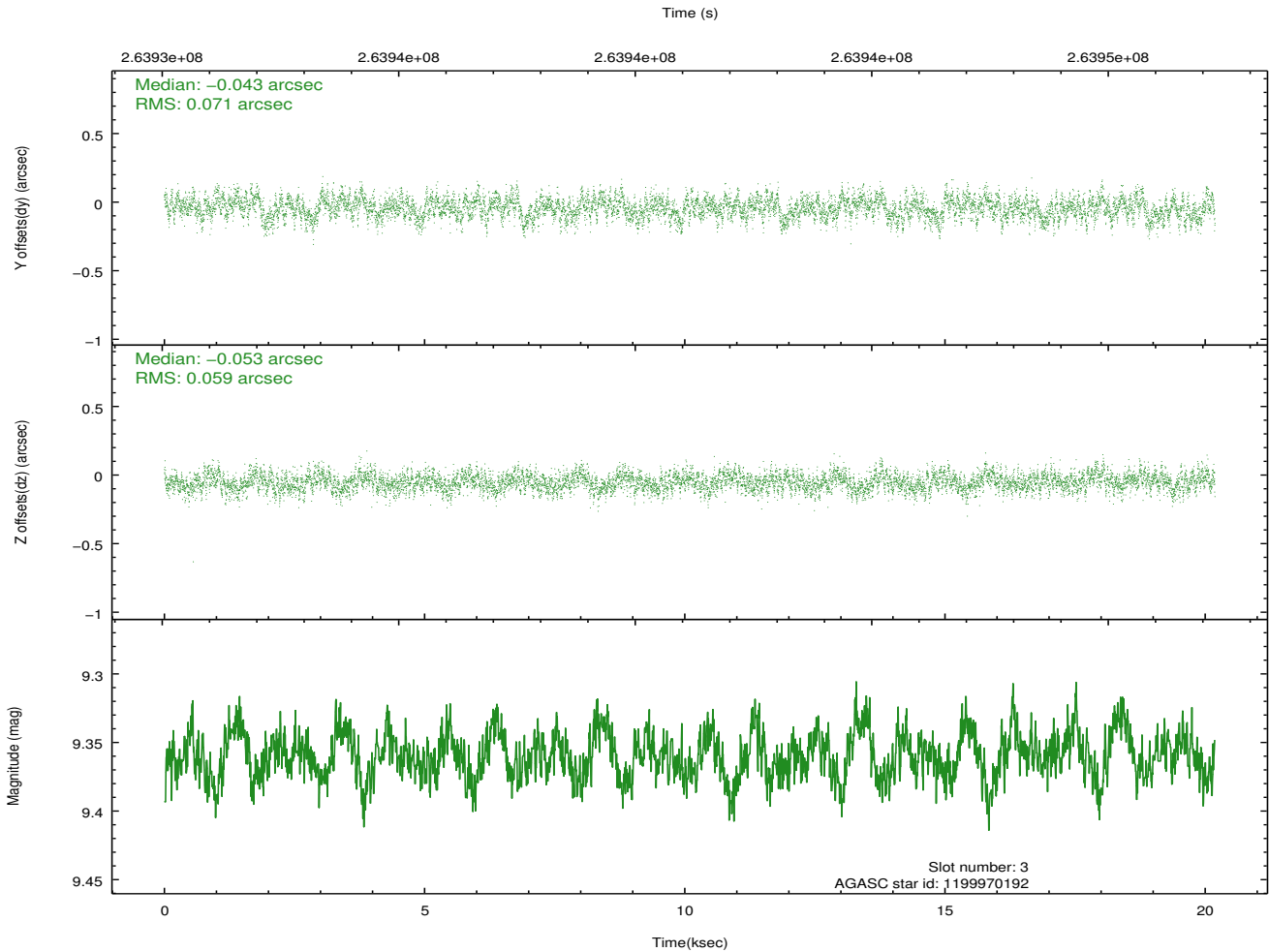
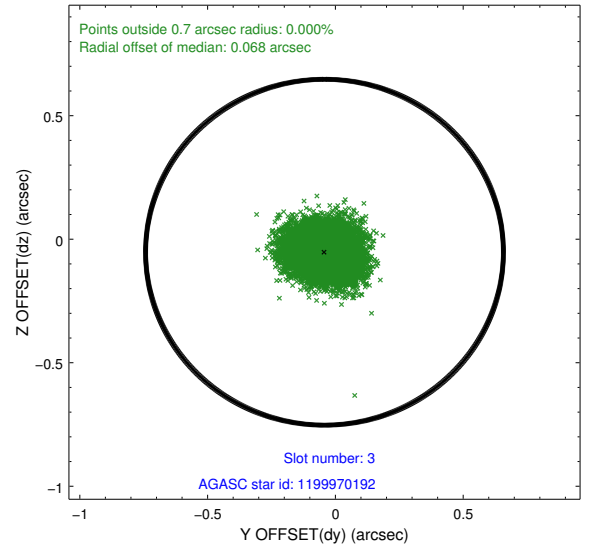
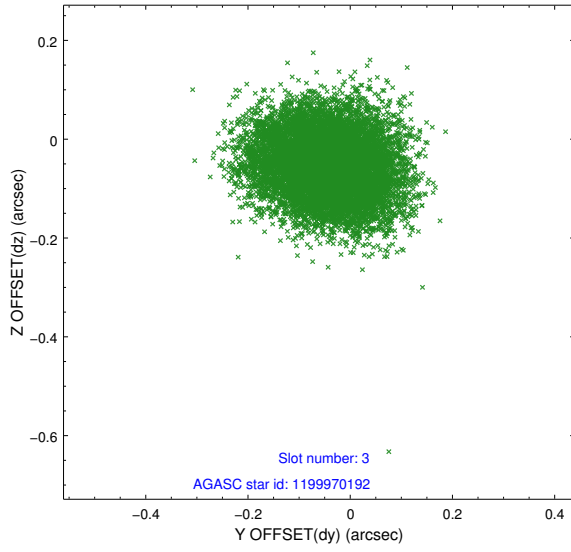


### Slot Statistics

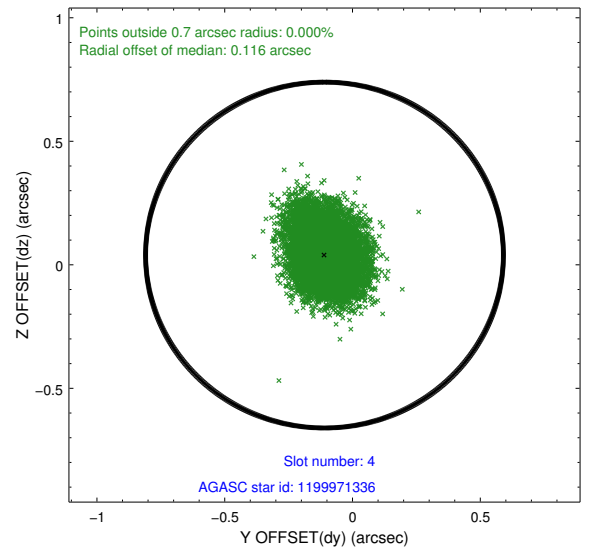
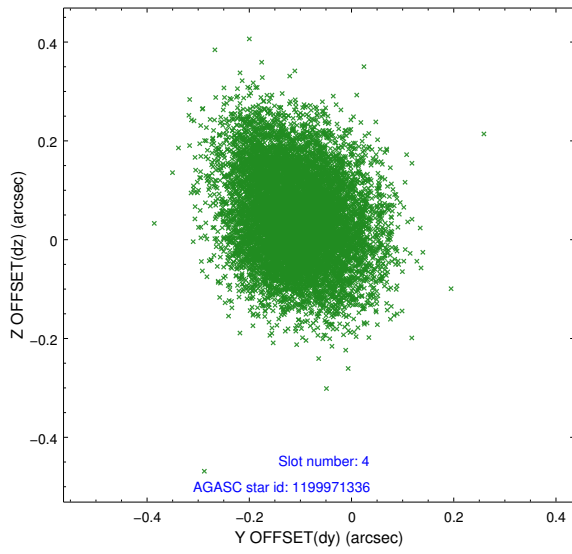
slot	status	id	mag	n_pts	med_dy	med_dz	dr1	dr2	ra	dec	mean_y	mean_z
0	FID	ACIS-S-2	7.10	4924	-0.087	-0.067	0.008	0.017	0.000000	0.000000	-759.43	-1731.87
1	FID	ACIS-S-4	7.21	4924	0.082	0.041	0.009	0.014	0.000000	0.000000	2153.92	176.55
2	FID	ACIS-S-6	7.35	4924	-0.023	0.034	0.010	0.015	0.000000	0.000000	402.83	814.13
3	GUIDE	1199970192	9.36	9839	-0.043	-0.053	0.099	0.159	52.672924	-70.725888	2103.39	-1261.53
4	GUIDE	1199971336	9.75	9844	-0.110	0.039	0.124	0.201	54.316816	-70.544522	110.42	-1809.14
5	GUIDE	1199972864	9.22	9830	0.110	0.096	0.079	0.127	54.683370	-70.865149	-245.60	-628.54
6	GUIDE	1200109088	9.10	9840	0.120	-0.012	0.073	0.119	56.242657	-71.097832	-1996.99	361.41
7	GUIDE	1200113128	6.79	9847	-0.077	-0.075	0.078	0.124	56.348887	-71.658123	-1920.00	2380.51

## 2.4 Star Slots

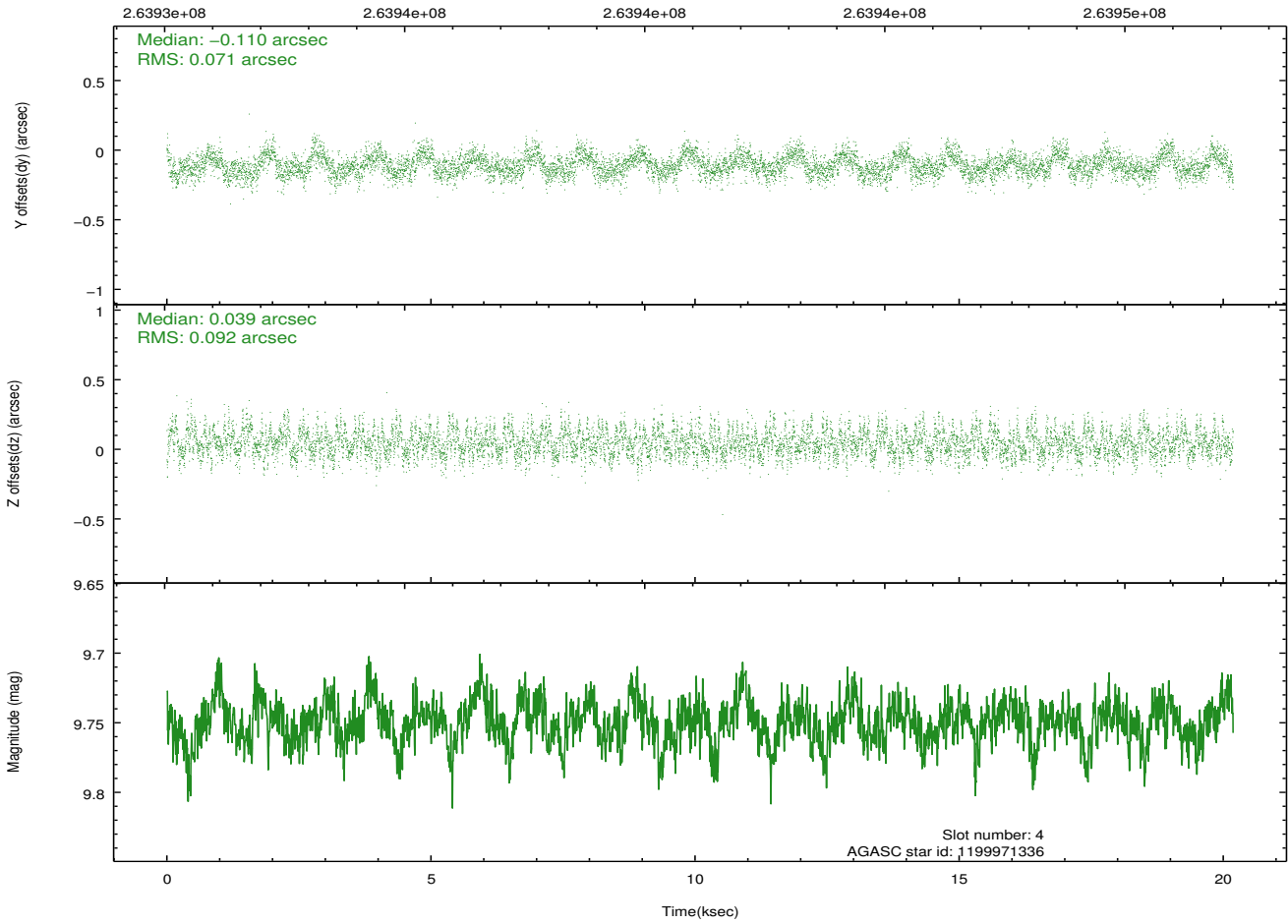
### 2.4.1 Slot 3



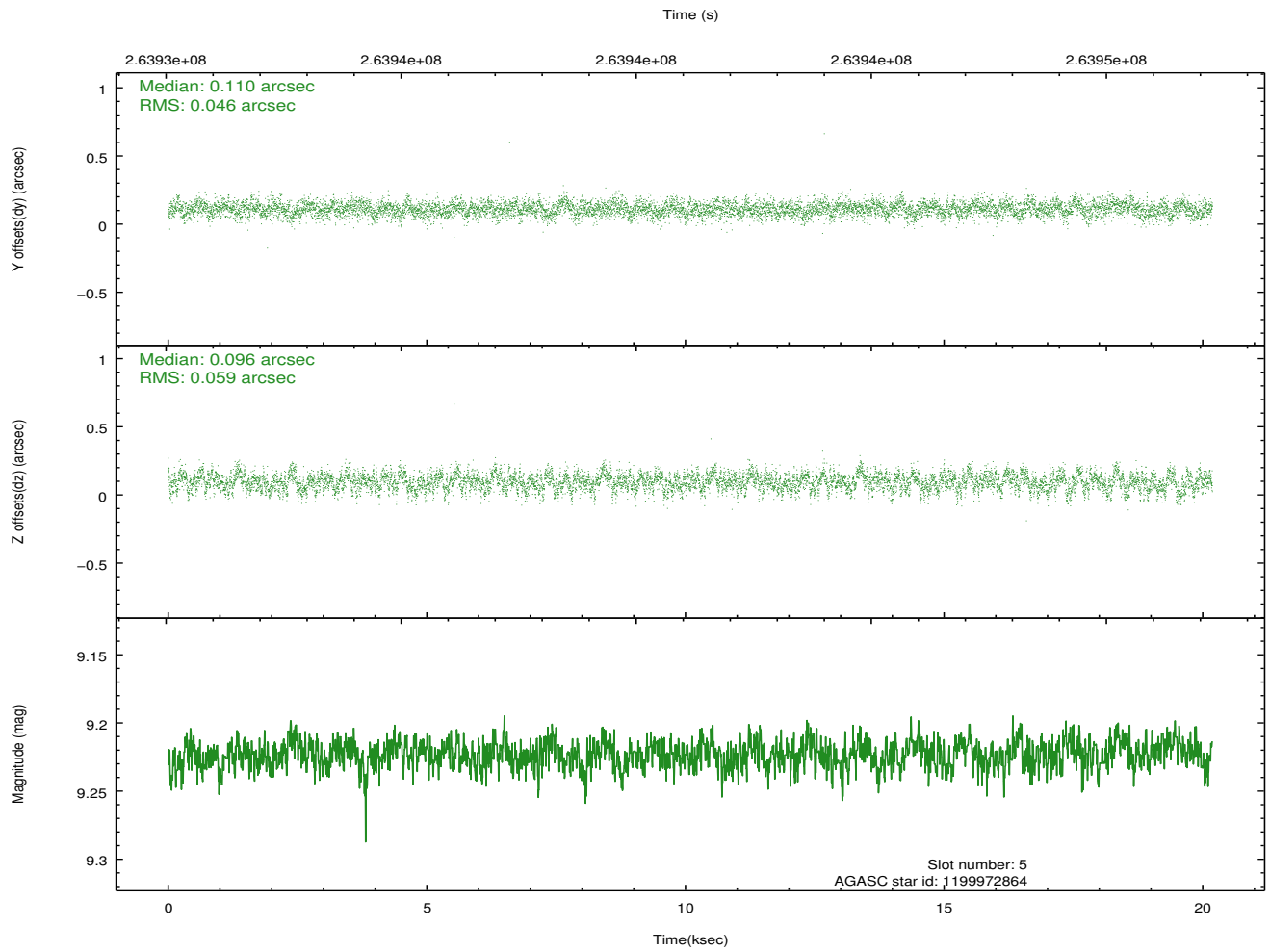
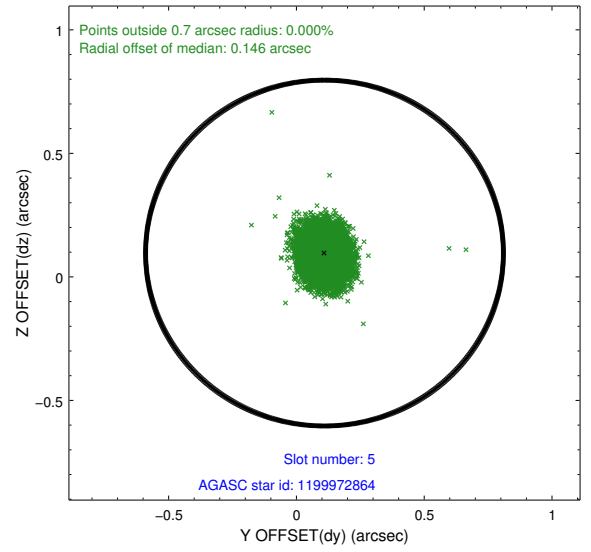
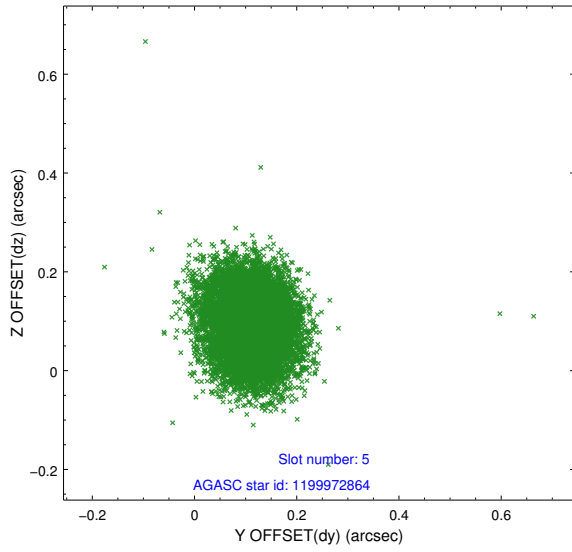
### 2.4.2 Slot 4



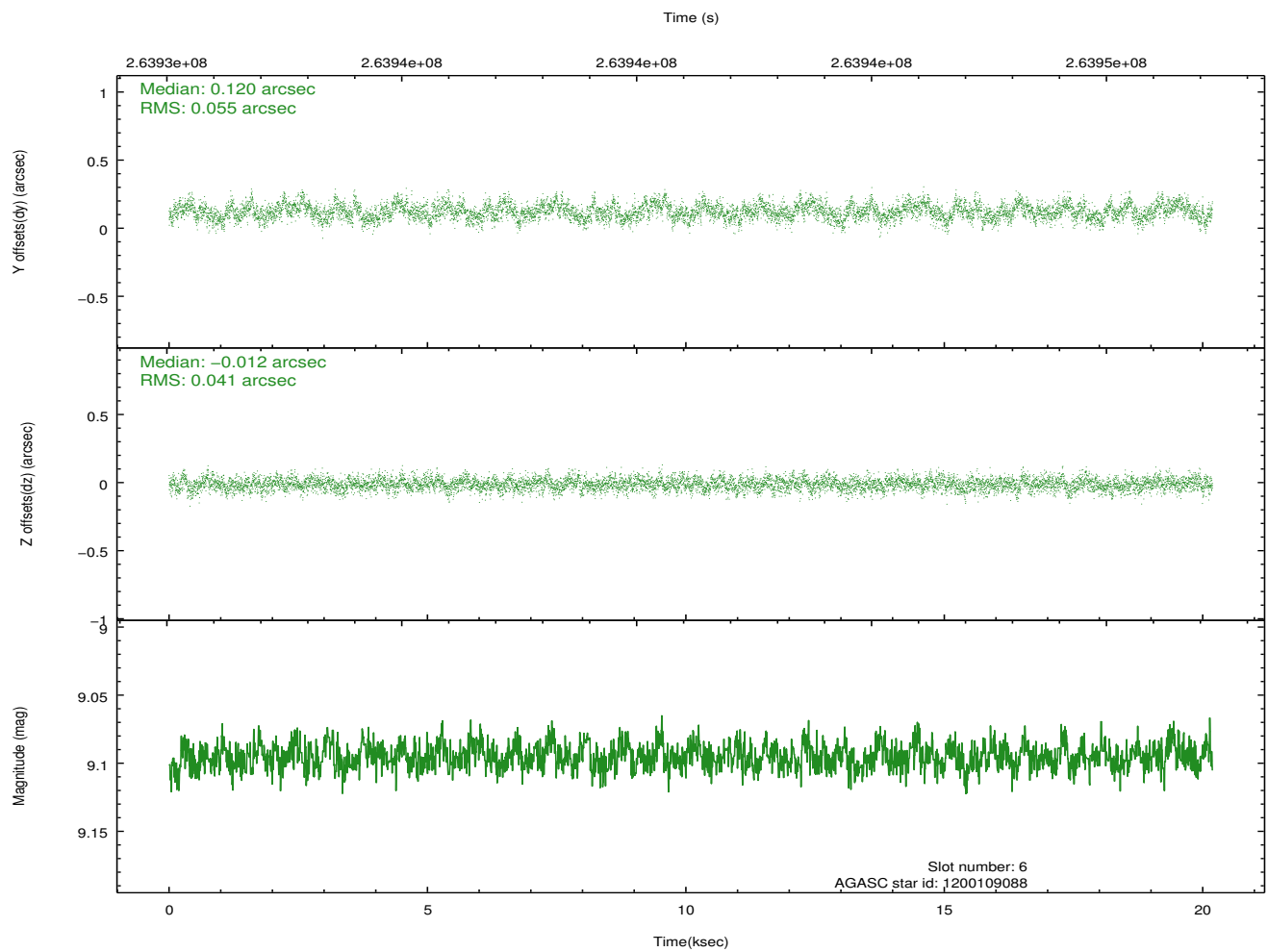
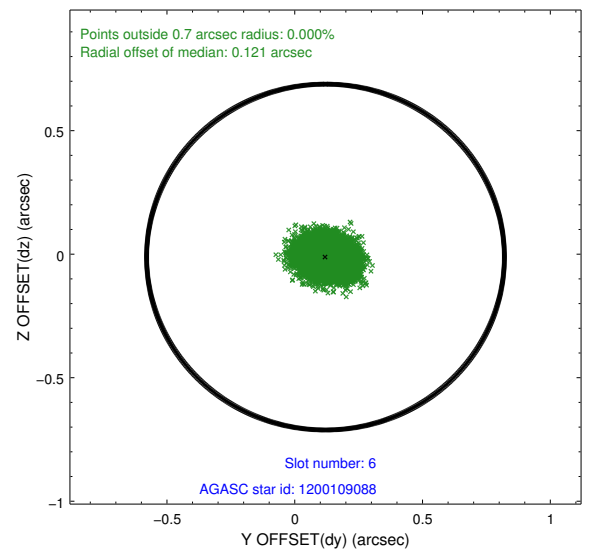
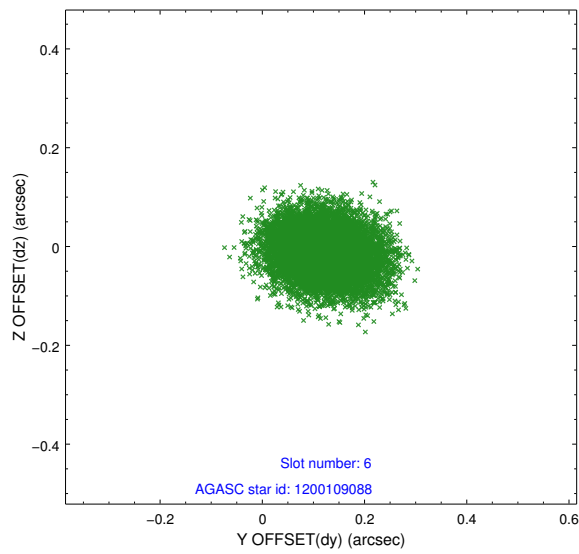
Time (s)



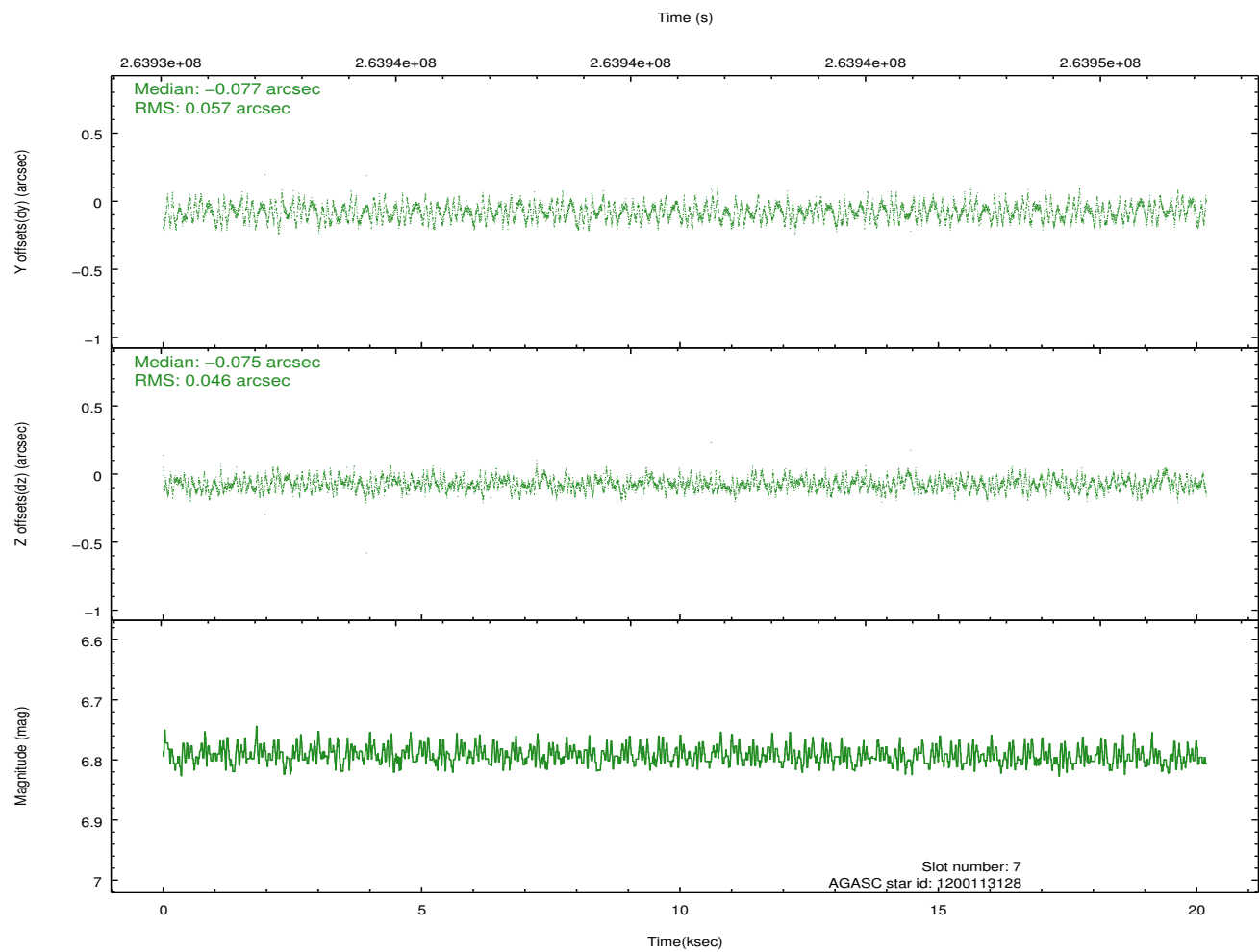
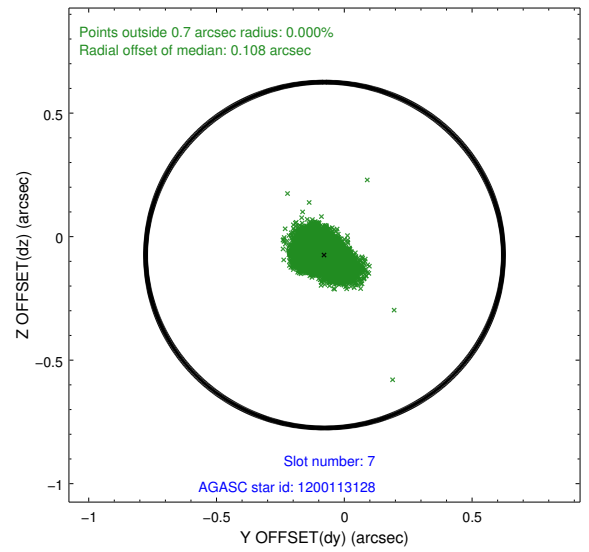
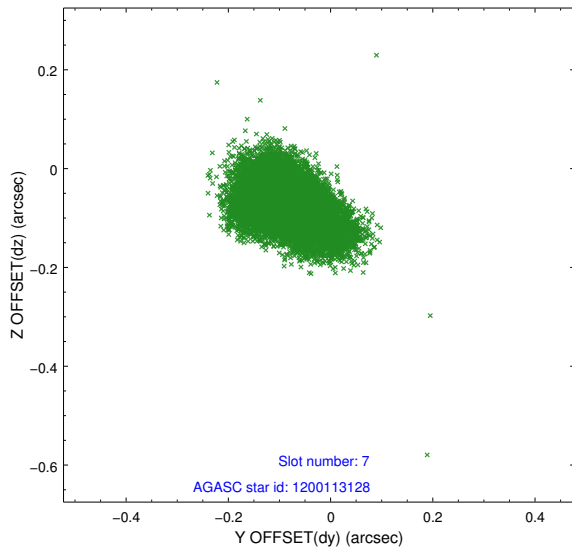
### 2.4.3 Slot 5



## 2.4.4 Slot 6

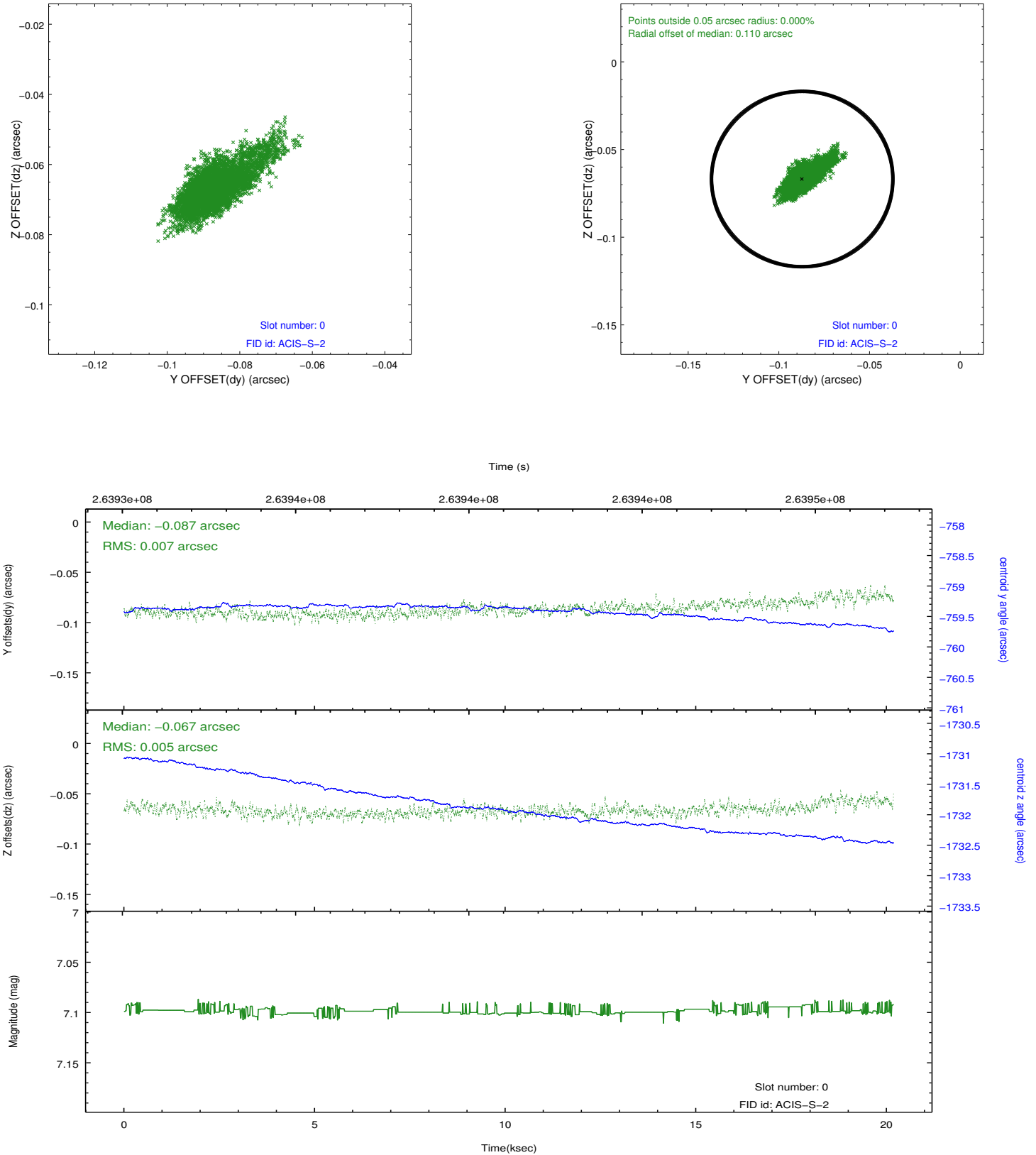


## 2.4.5 Slot 7

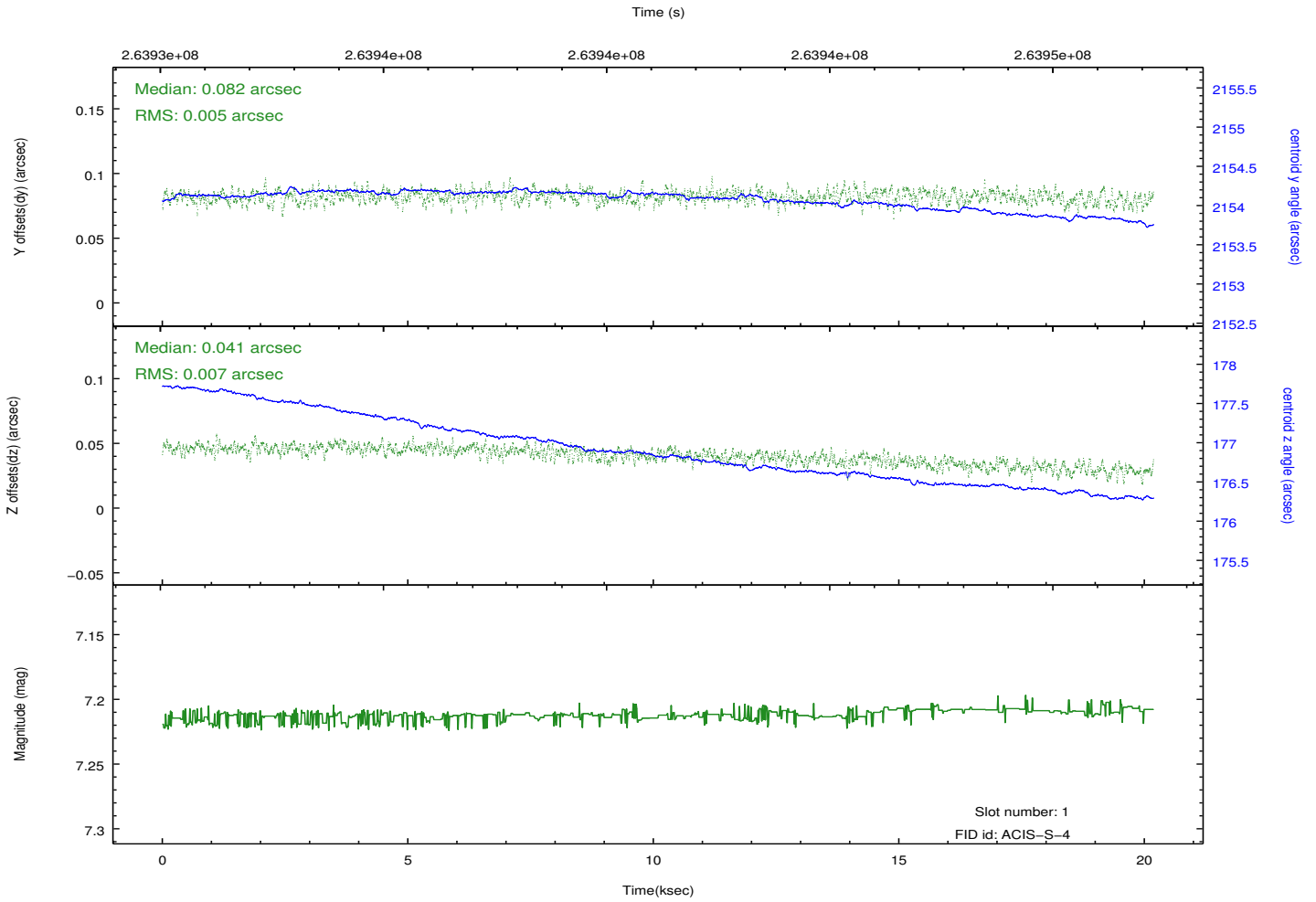
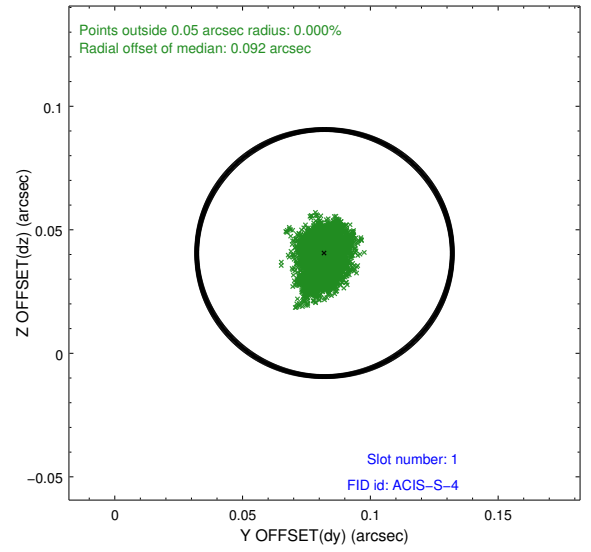
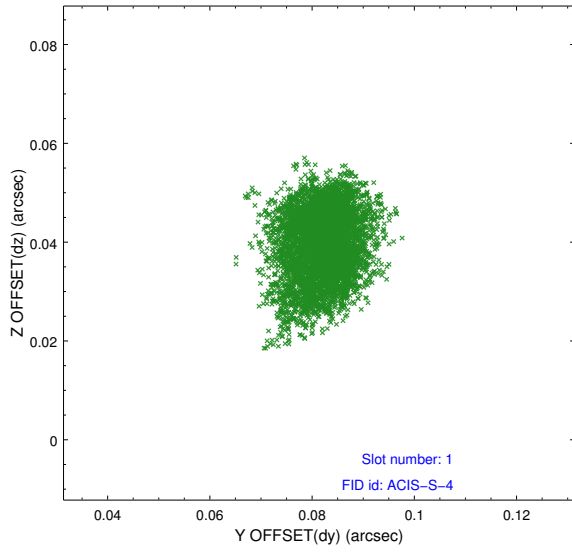


## 2.5 FID Slots

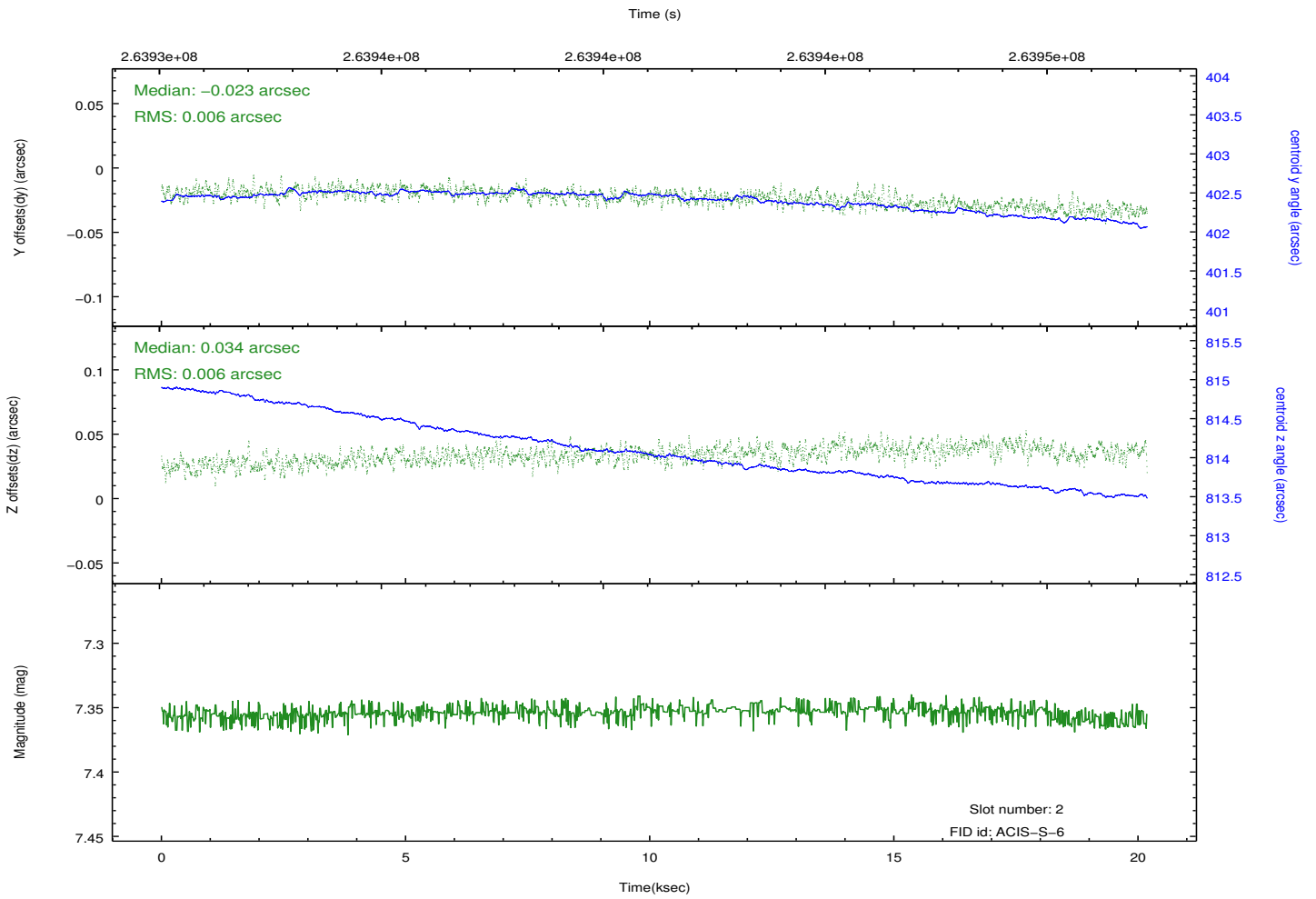
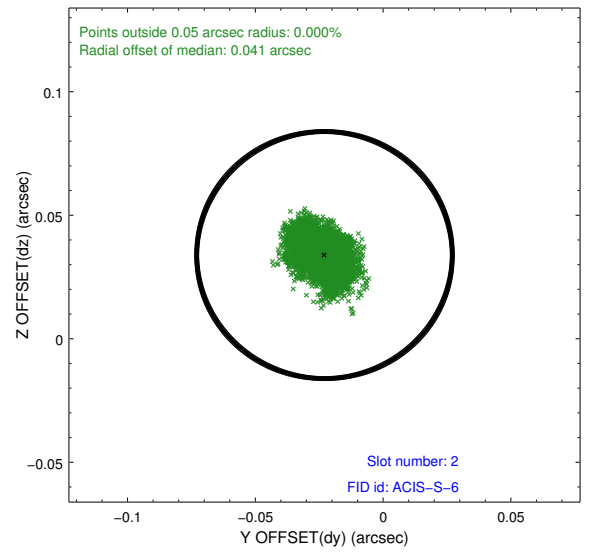
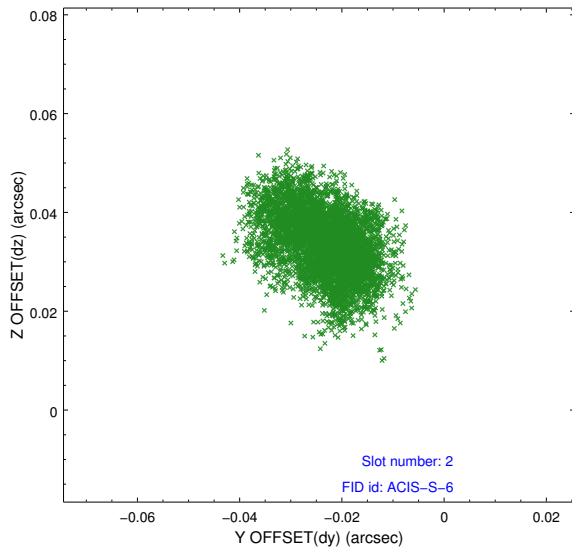
### 2.5.1 Slot 0



## 2.5.2 Slot 1



### 2.5.3 Slot 2



# A Summary

## A.1 Status

V&V Scientist	Jen Lauer
V&V Date (YYYY-MM-DD)	2012.04.03
V&V Edition	1
V&V Disposition and Status	OK
V&V Charge Time	20.0383999

## A.2 Comments