

V&V Reference Report

L2 ASCDS Version : 8.4.3

Observation 6855 - L2 Version 2
Chandra X-Ray Center

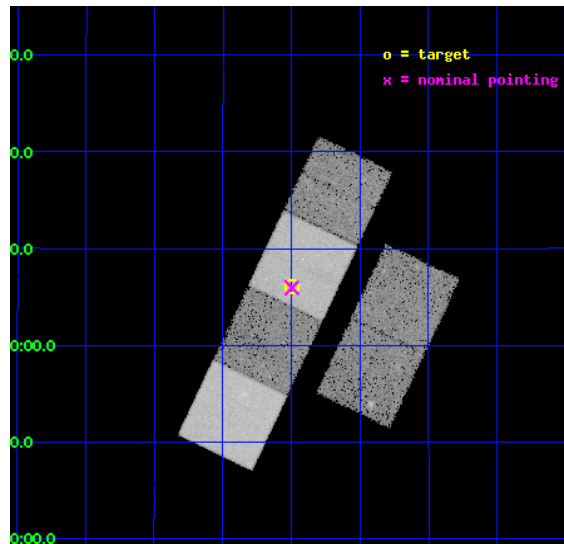
L2 Processing Date : Mar 26 2012

Contents

1	Front	2
2	OBI	3
2.1	OBI	3
2.1.1	Images	3
2.1.2	Bias	3
2.1.3	Parameters	4
2.1.4	Events	4
2.2	Compared Parameters	5
2.3	Aspect	6
2.4	Star Slots	9
2.4.1	Slot 3	9
2.4.2	Slot 4	10
2.4.3	Slot 5	11
2.4.4	Slot 6	12
2.4.5	Slot 7	13
2.5	FID Slots	14
2.5.1	Slot 0	14
2.5.2	Slot 1	15
2.5.3	Slot 2	16
A	Summary	17
A.1	Status	17
A.2	Comments	17

1 Front

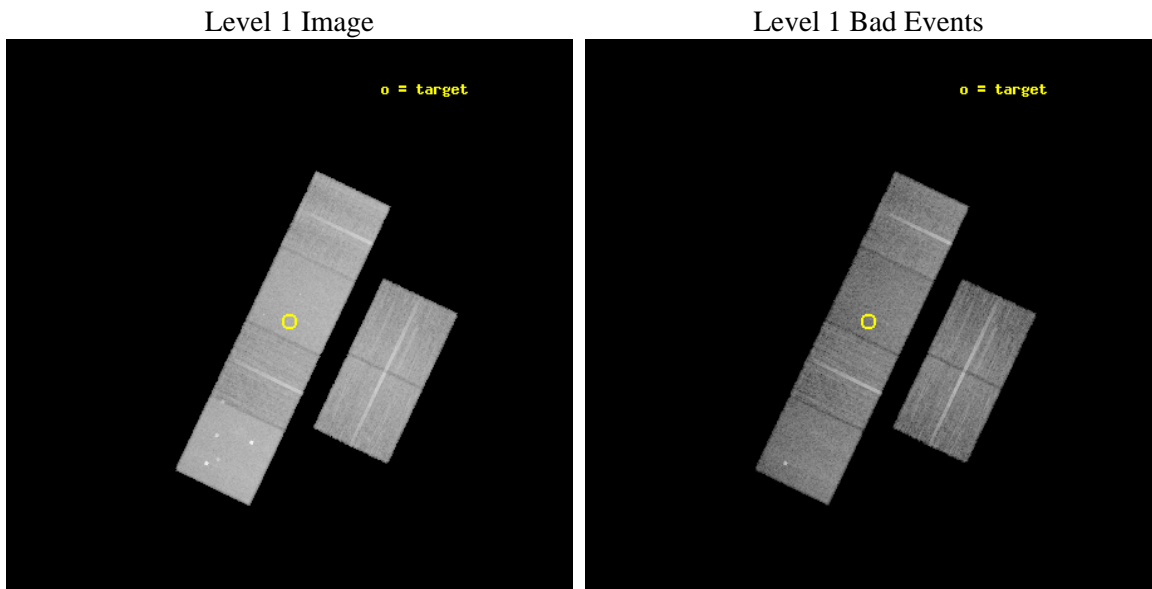
seq_num	701273	Sequence number
obs_id	6855	Observation id
title	Chandra observations of (U)LIRGs with double nuclei: search for binary AGN and X-ray luminous starbursts	Proposal title
observer	Dr. Stefanie Komossa	Principal investigator
object	III Zw035	Source name
dtcycle	0	
cycle	P	events from which exps? Prim/Second/Both
ra_targ	26.125	Observer's specified target RA [deg]
dec_targ	17.101111	Observer's specified target Dec [deg]
ra_nom	26.124023076285	Nominal RA [deg]
dec_nom	17.099262943072	Nominal Dec [deg]
roll_nom	295.47269201702	Nominal Roll [deg]
revision	2	Processing version of data
ontime	15171.199943483	Sum of GTIs [s]
livetime	14979.093074799	Livetime [s]
ontime2	15171.199943483	Sum of GTIs [s]
ontime3	15167.958973199	Sum of GTIs [s]
ontime5	15171.199943483	Sum of GTIs [s]
ontime6	15171.199943483	Sum of GTIs [s]
ontime7	15171.199943483	Sum of GTIs [s]
ontime8	15171.199943483	Sum of GTIs [s]
l2events	214866	Number of level 2 events



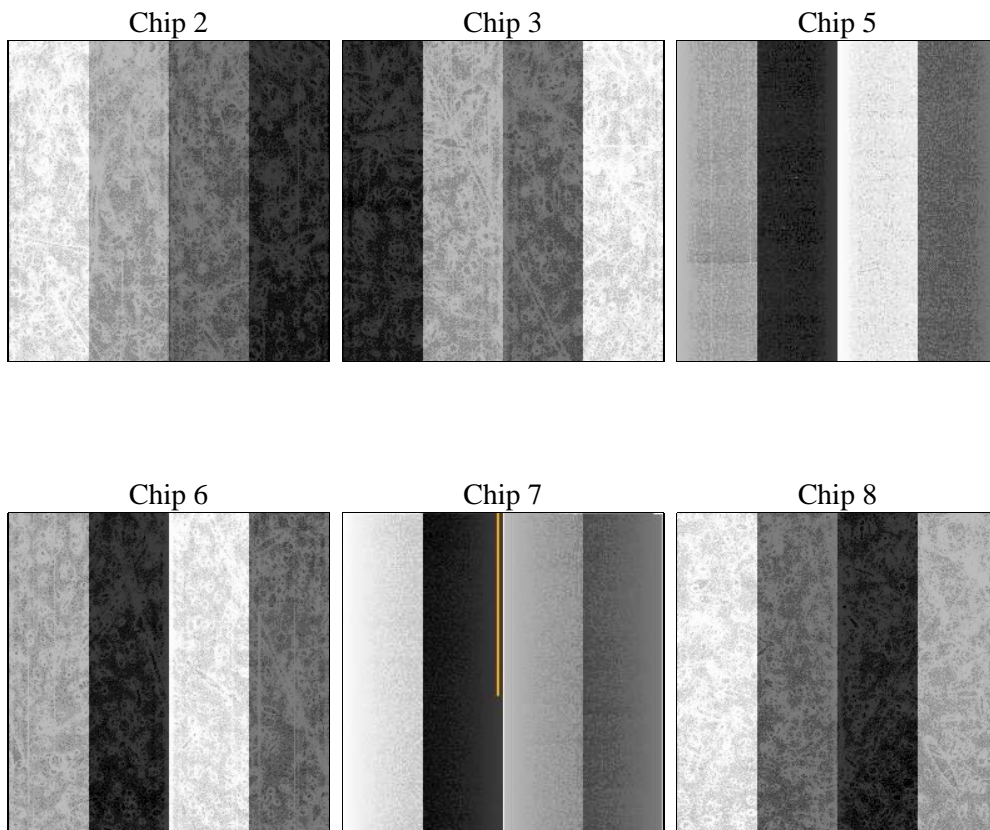
2 OBI

2.1 OBI

2.1.1 Images



2.1.2 Bias



2.1.3 Parameters

obi_num	0	Obi number	sched_exp_time	15000.000000	[s] Scheduled observation exposure time
ascdsver	8.4.3	Processing system revision	ontime	15171.199943483	Sum of GTIs [s]
caldsver	4.4.8	 	ontime2	15171.199943483	Sum of GTIs [s]
date	2012-03-26T06:20:50	Date and time of file creation	ontime3	15167.958973199	Sum of GTIs [s]
revision	2	Processing version of data	ontime5	15171.199943483	Sum of GTIs [s]
			ontime6	15171.199943483	Sum of GTIs [s]
			ontime7	15171.199943483	Sum of GTIs [s]
			ontime8	15171.199943483	Sum of GTIs [s]
			l1events	987981	Number of level 1 events

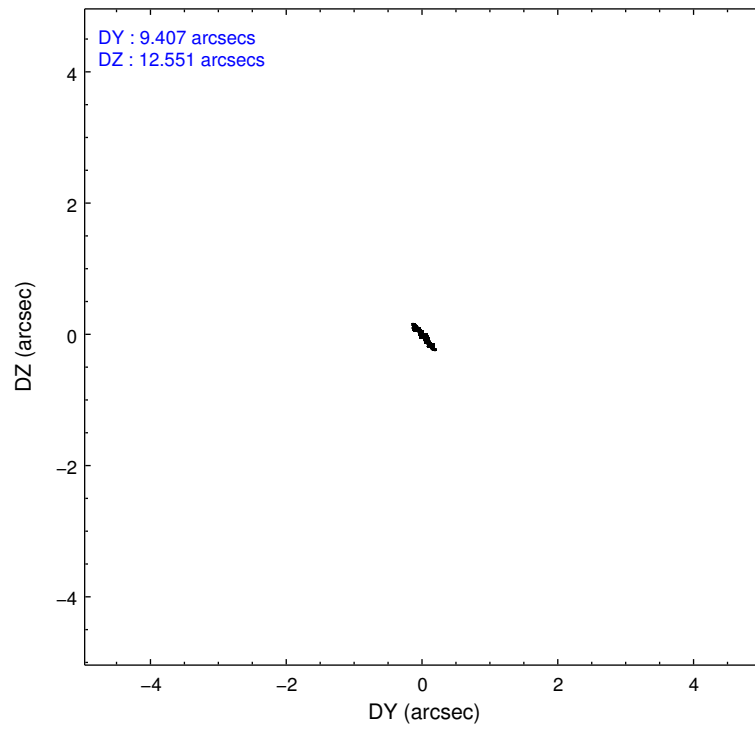
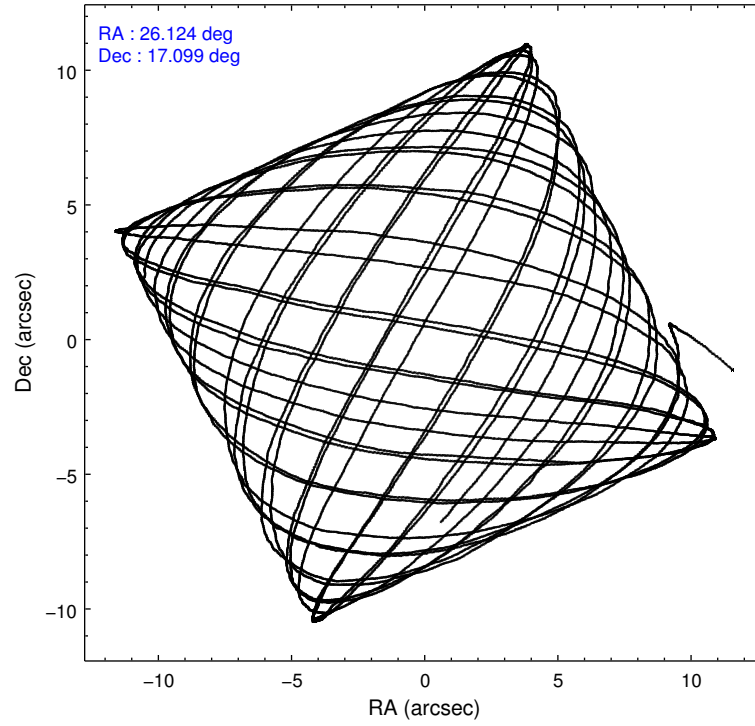
2.1.4 Events

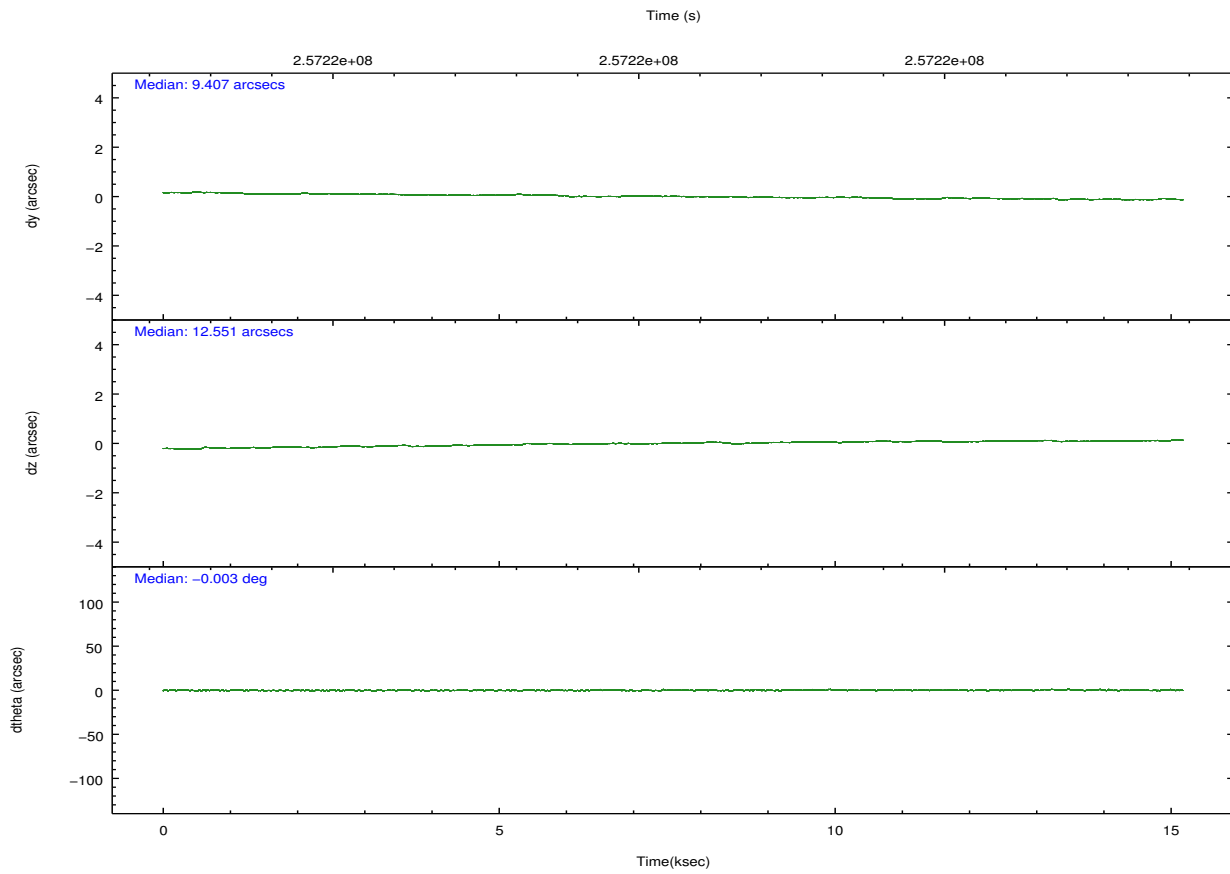
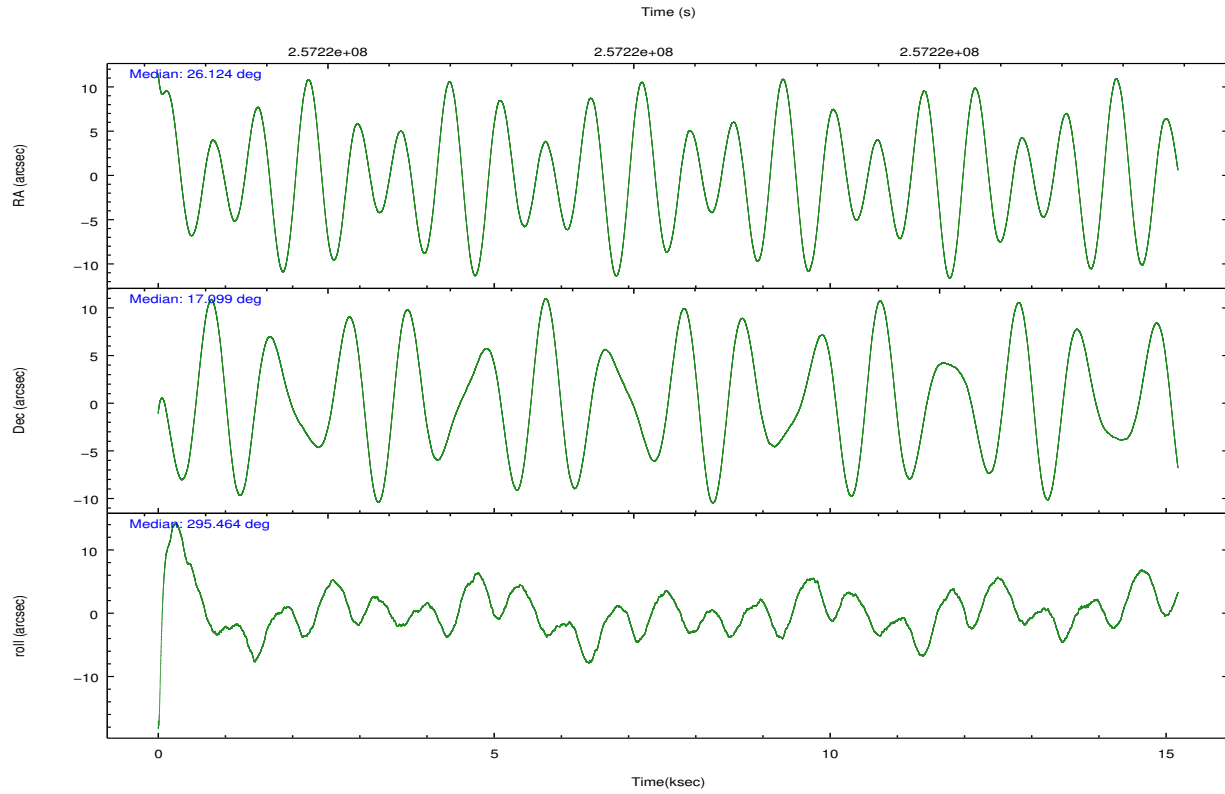
	ccd 2	ccd 3	ccd 5	ccd 6	ccd 7	ccd 8		ccd 2	ccd 3	ccd 5	ccd 6	ccd 7	ccd 8
level 1 events	142829	133385	213034	138772	187438	172523	grade 0 events	7732	7348	12578	6821	6927	12247
rejected events	126801	117706	118695	122761	113236	136381		5%	5%	5%	4%	3%	7%
rejected %	88%	88%	55%	88%	60%	79%	grade 1 events	99	66	306	64	201	121
								0%	0%	0%	0%	0%	0%
							grade 2 events	3441	3082	29276	3532	15774	8261
								2%	2%	13%	2%	8%	4%
							grade 3 events	1458	1604	3843	1596	6894	4100
								1%	1%	1%	1%	3%	2%
							grade 4 events	1543	1546	3474	1559	6707	3848
								1%	1%	1%	1%	3%	2%
							grade 5 events	5442	6251	15173	6301	17965	8517
								3%	4%	7%	4%	9%	4%
							grade 6 events	2705	2933	50416	3428	42081	9682
								1%	2%	23%	2%	22%	5%
							grade 7 events	120409	110555	97968	115471	90889	125747
								84%	82%	45%	83%	48%	72%

2.2 Compared Parameters

Parameter	Planned	Actual	Parameter	Planned	Actual
Instrument	ACIS	ACIS	Obspar format version number	7	7
Detector	ACIS-235678	ACIS-235678	Obspar file type	PREDICTED	ACTUAL
Grating	NONE	NONE	Obspar update status	NONE	UPDATED
Data mode	FAINT	FAINT	Number of optional ACIS chips dropped	0	0
Observation mode	POINTING	POINTING	On-chip summing requested	N	N
[deg] Pointing RA	26.100287	26.12402307628463	Subarray requested	NONE	NONE
[deg] Pointing Dec	17.114396	17.09926294307188	Alternating exposures requested	N	N
[deg] Pointing Roll	295.323071	295.4726920170176	[s] Primary exposure time	0.000000	3.2
[mm] SIM focus pos	-0.684267	-0.6828225247311905			
[mm] SIM defocus	0	0.001444936568705701			
[mm] SIM translation stage pos	-190.132523	-190.1400660498719			
[mm] SIM translation stage offset	0	0.00754346686406393			
[s] Observation start time (MET)	257213153.184000	257211652.91134			
Observation start date	2006-02-25T00:04:48	2006-02-24T23:40:52			
[s] Observation end time (MET)	257228153.184000	257229085.08715			
Observation end date	2006-02-25T04:14:48	2006-02-25T04:31:25			
Read mode	TIMED	TIMED			

2.3 Aspect



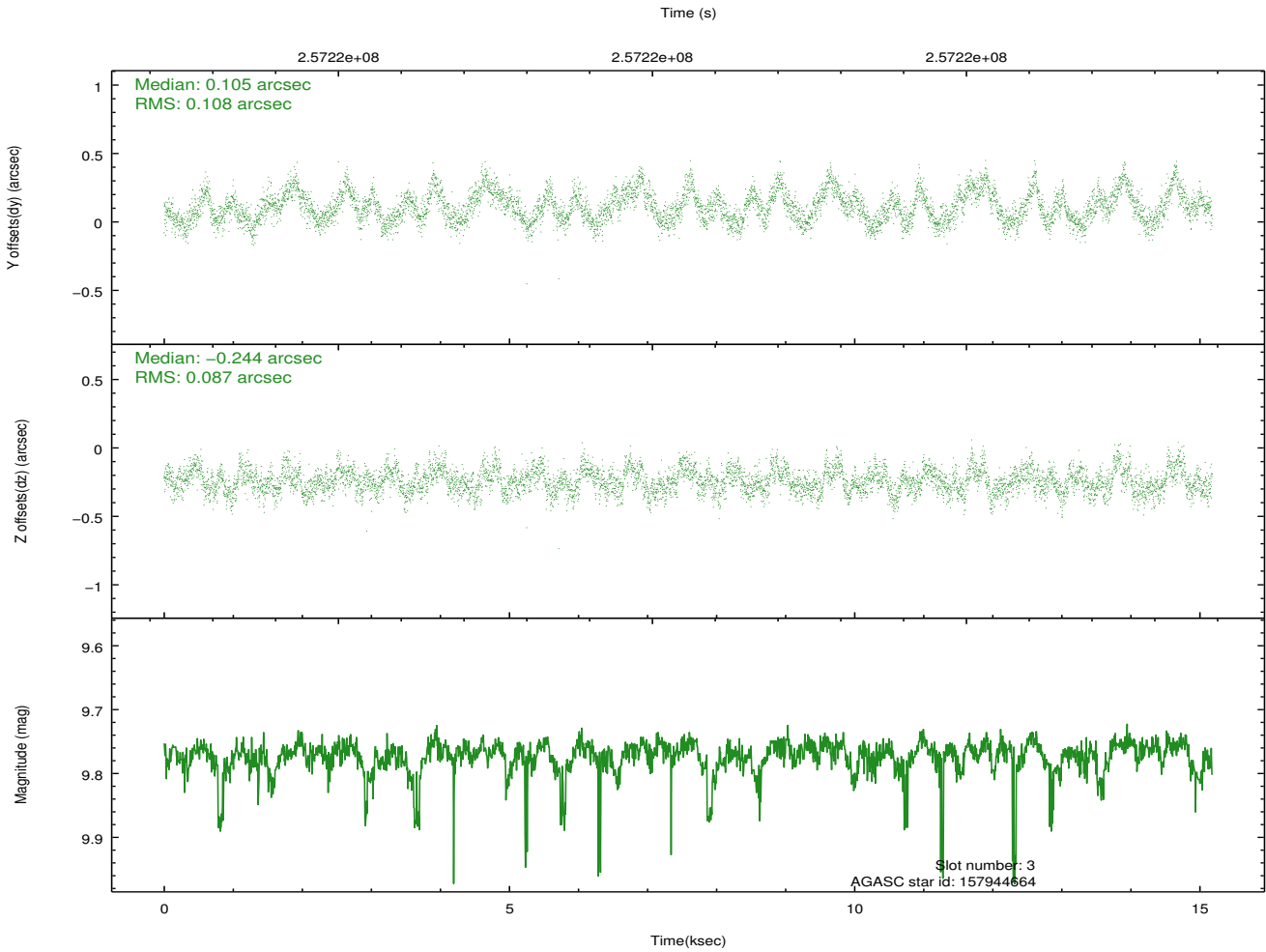
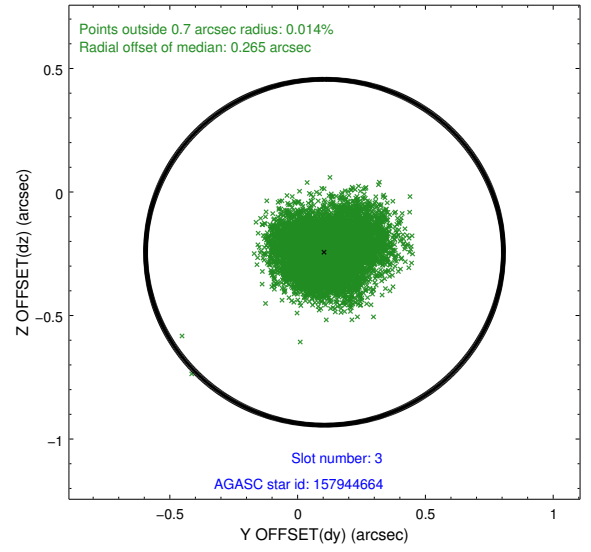
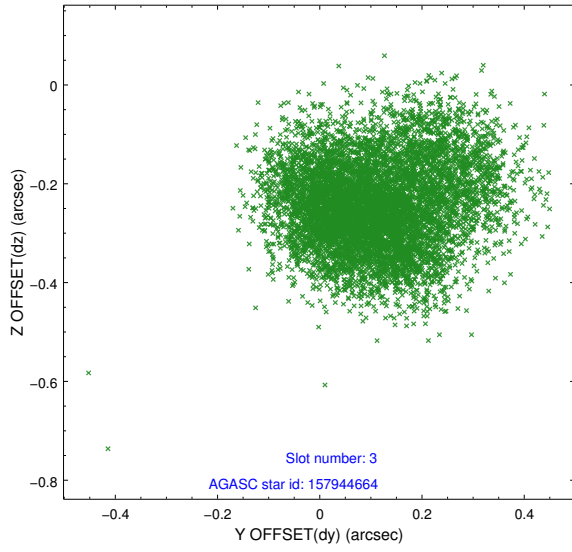


Slot Statistics

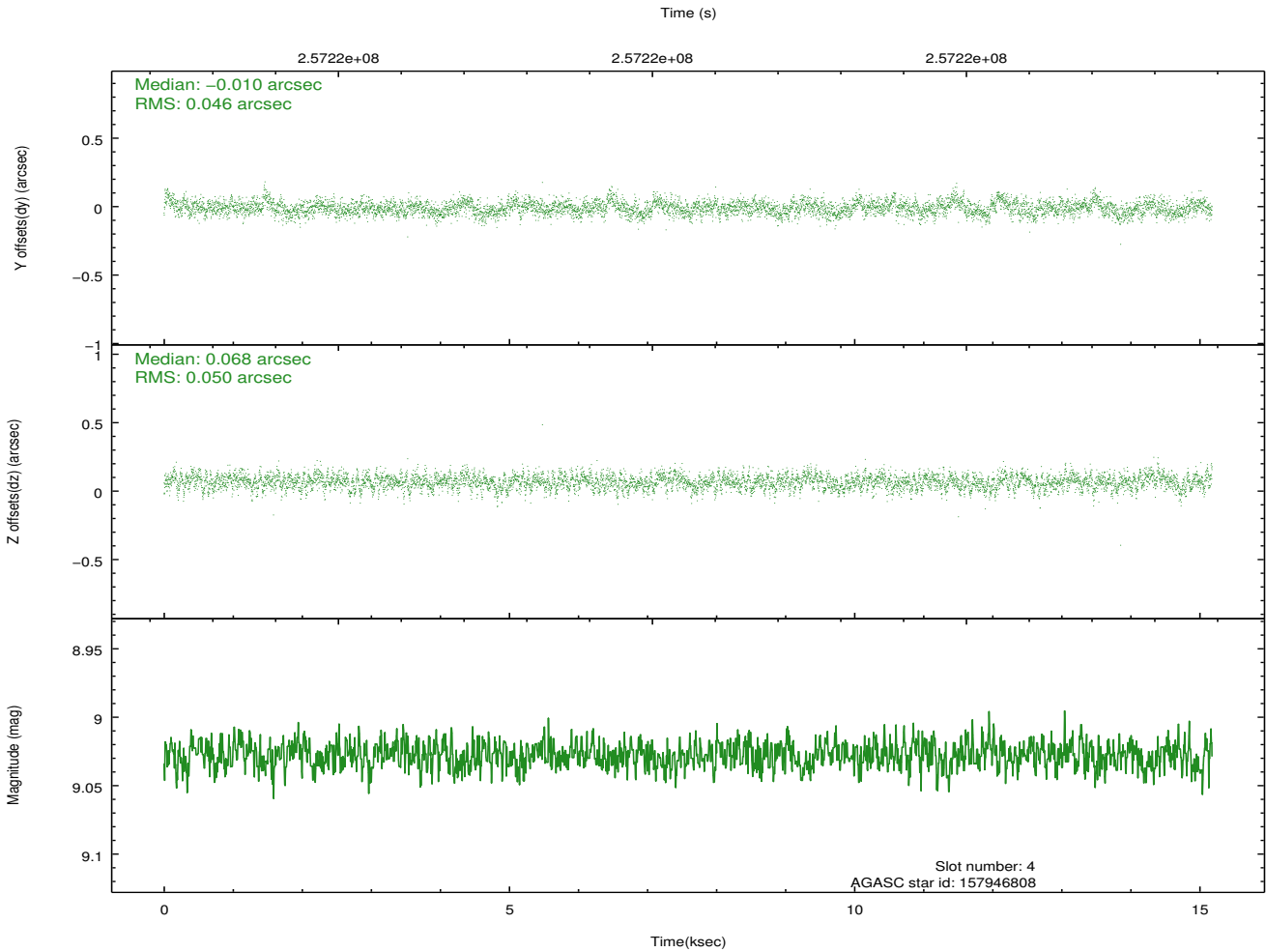
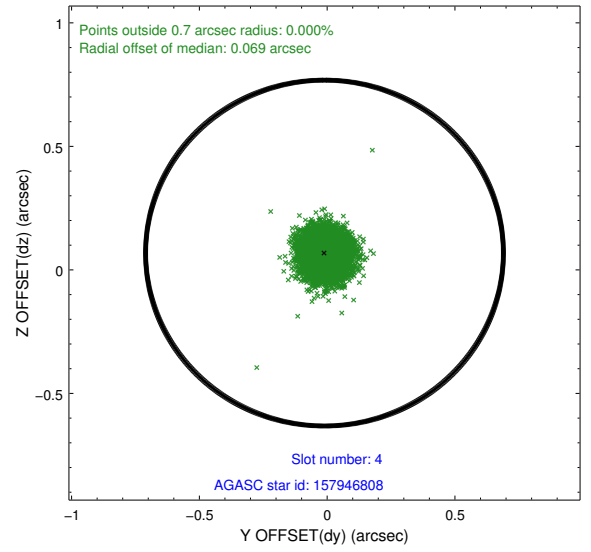
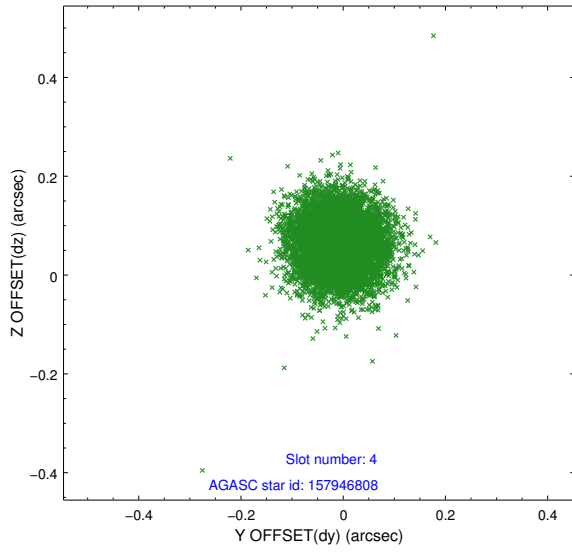
slot	status	id	mag	n_pts	med_dy	med_dz	dr1	dr2	ra	dec	mean_y	mean_z
0	FID	ACIS-S-2	7.10	3702	-0.011	-0.040	0.007	0.012	0.000000	0.000000	-762.26	-1733.88
1	FID	ACIS-S-4	7.20	3702	0.127	0.016	0.005	0.010	0.000000	0.000000	2151.04	174.32
2	FID	ACIS-S-5	7.23	3702	-0.147	0.032	0.007	0.012	0.000000	0.000000	-1814.84	168.39
3	GUIDE	157944664	9.77	7385	0.105	-0.244	0.149	0.236	25.972675	17.418757	-1177.65	72.24
4	GUIDE	157946808	9.03	7399	-0.010	0.068	0.072	0.116	25.945545	17.122189	-253.09	-468.92
5	GUIDE	157951320	9.39	7392	-0.017	0.010	0.093	0.150	26.101194	17.063795	166.33	-74.91
6	GUIDE	157955000	6.88	7405	0.114	0.115	0.074	0.125	26.647080	17.412697	-169.66	2158.49
7	GUIDE	158343776	9.56	7398	-0.200	0.047	0.117	0.190	25.983489	17.713818	-2122.06	561.25

2.4 Star Slots

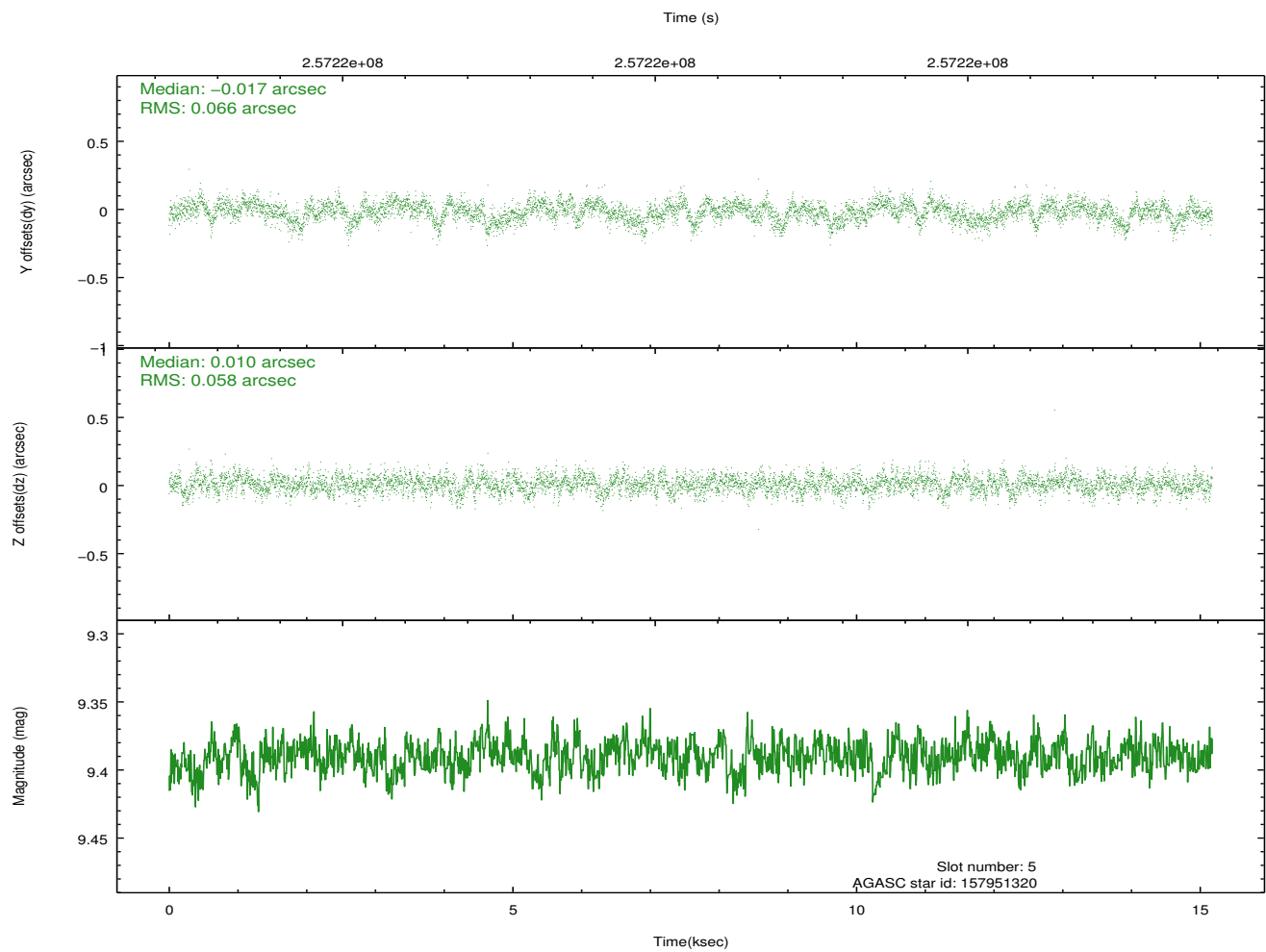
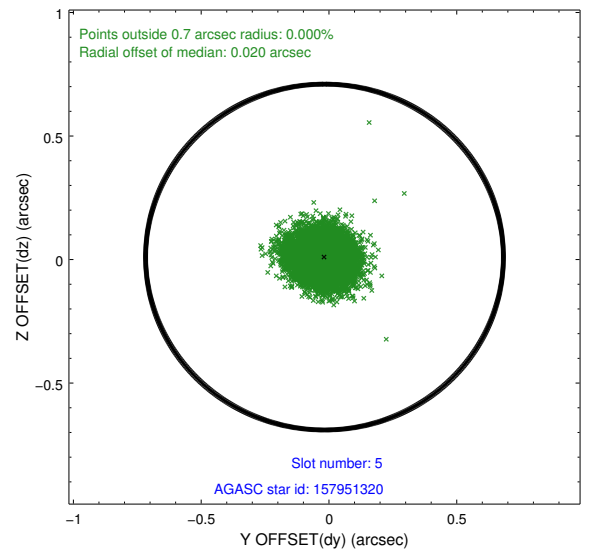
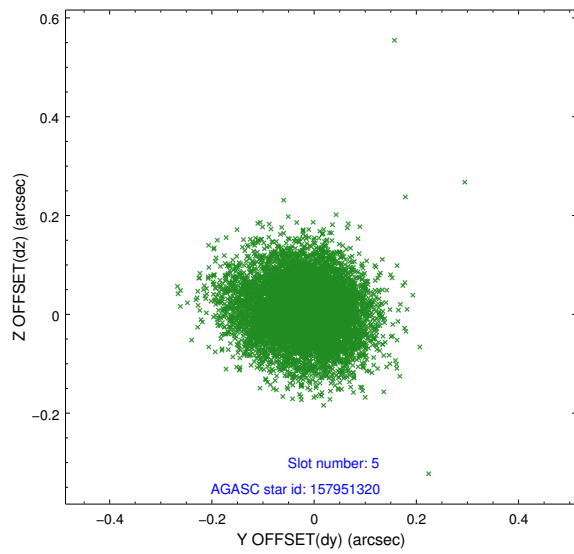
2.4.1 Slot 3



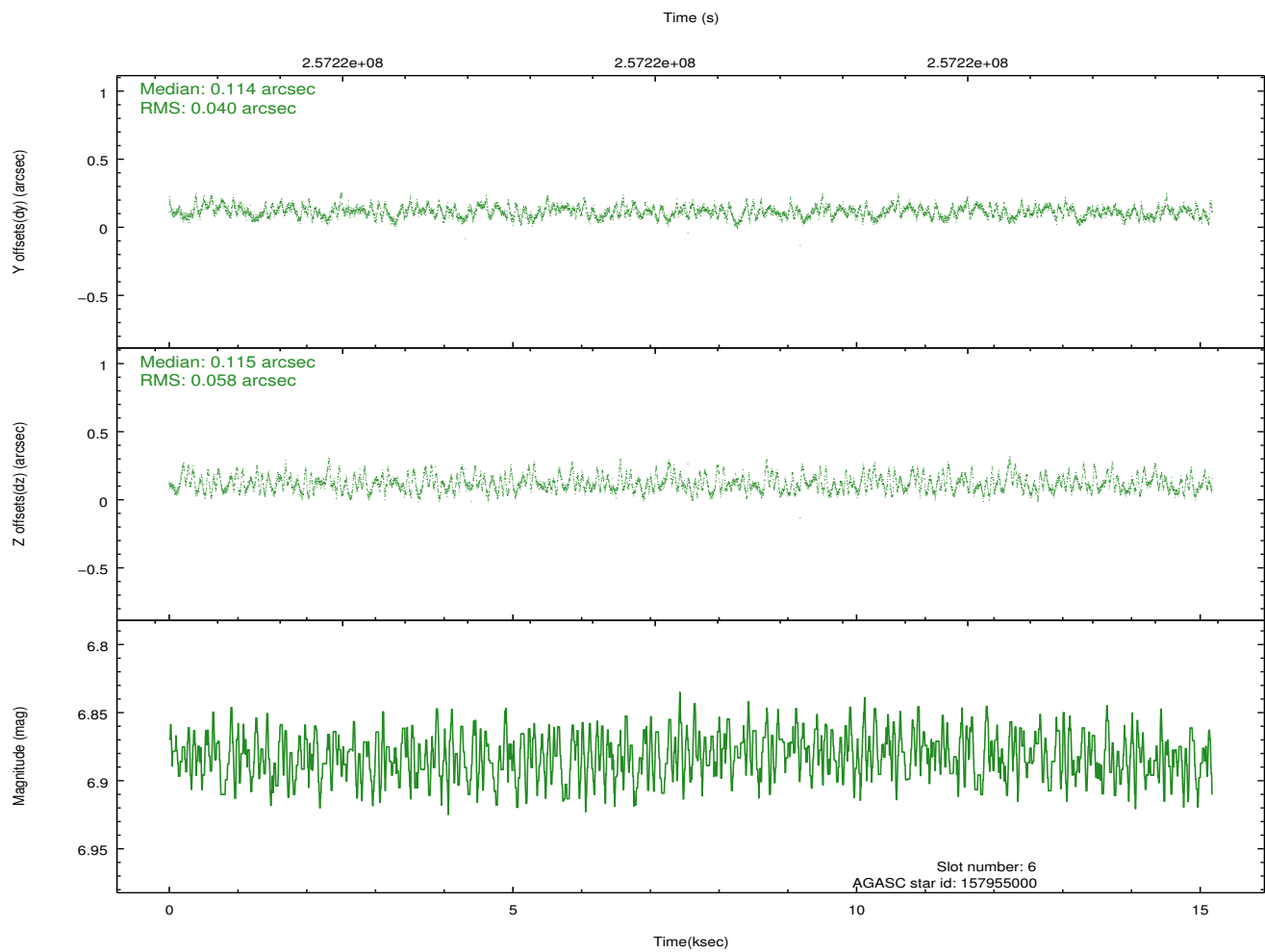
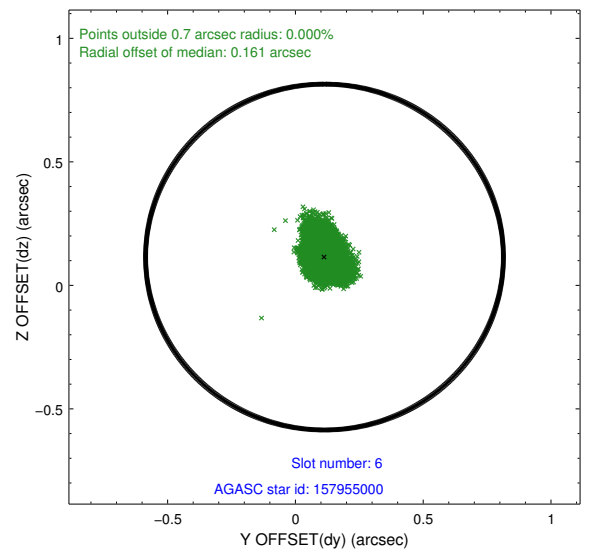
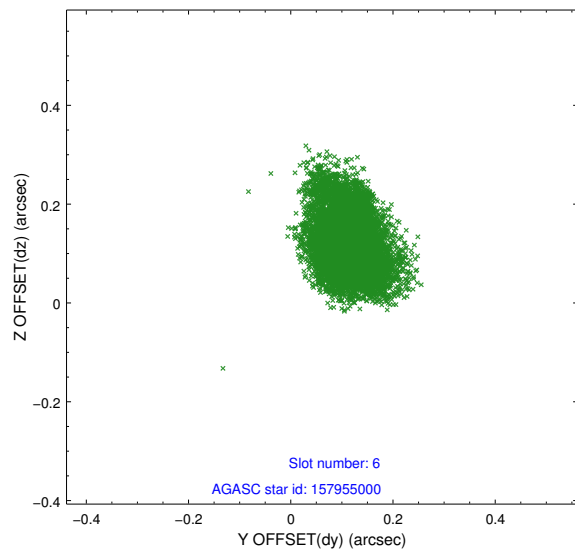
2.4.2 Slot 4



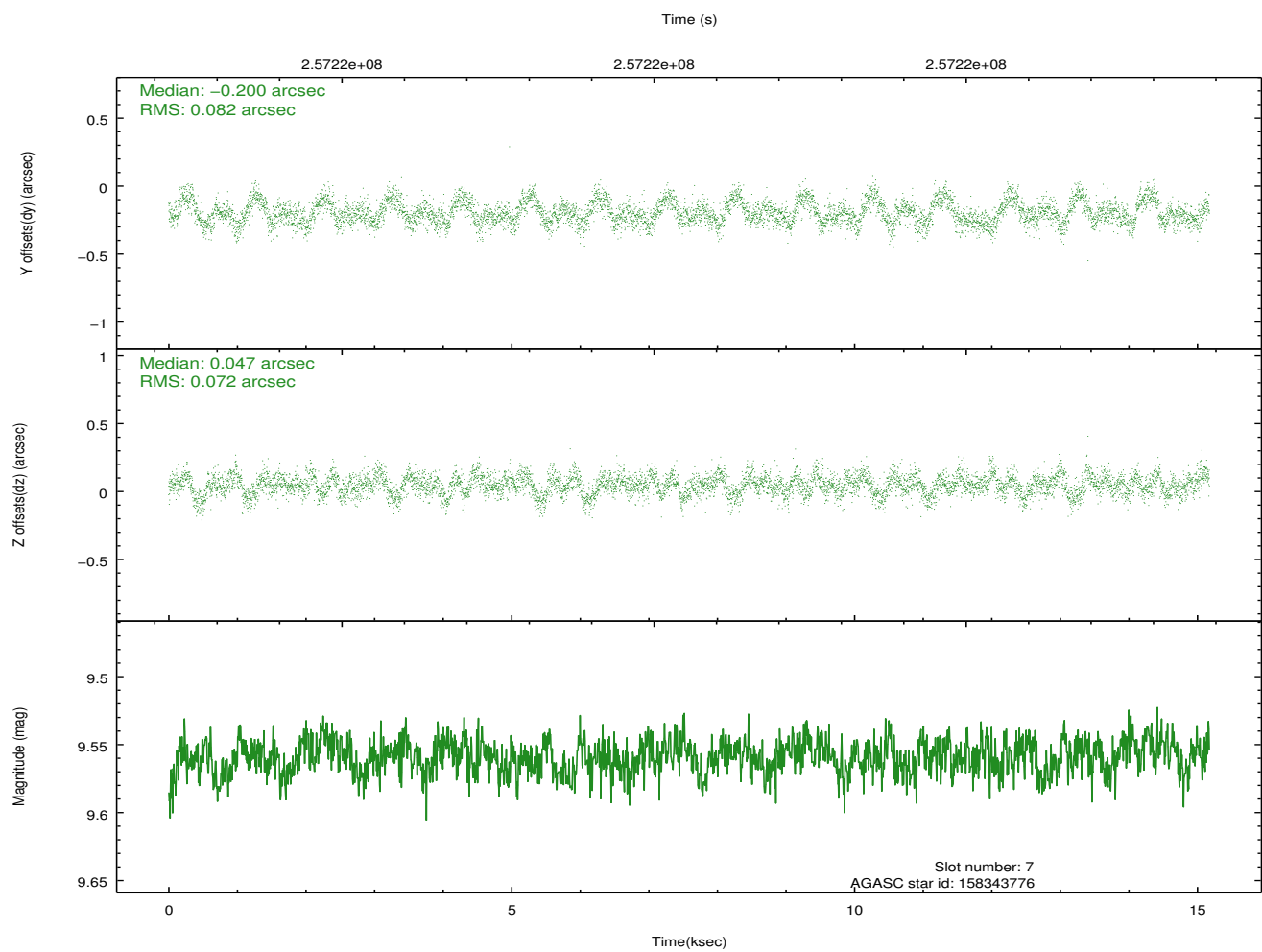
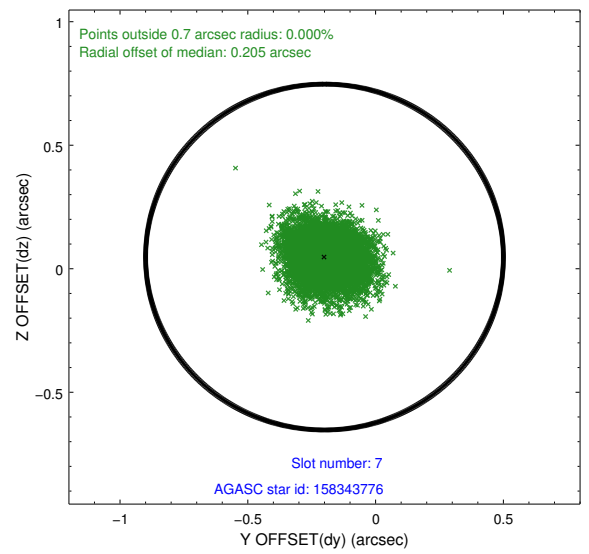
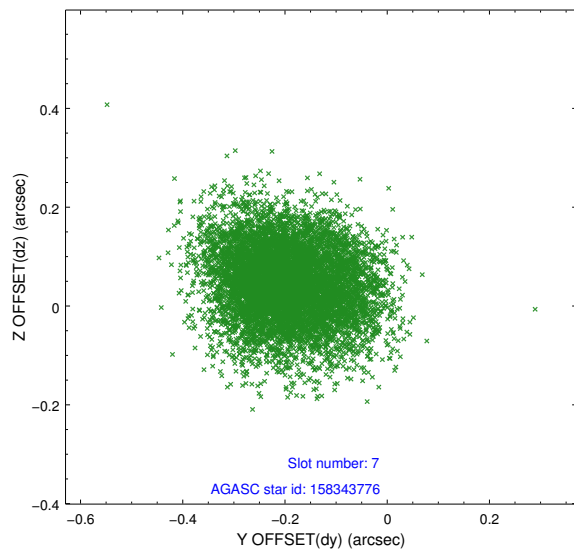
2.4.3 Slot 5



2.4.4 Slot 6

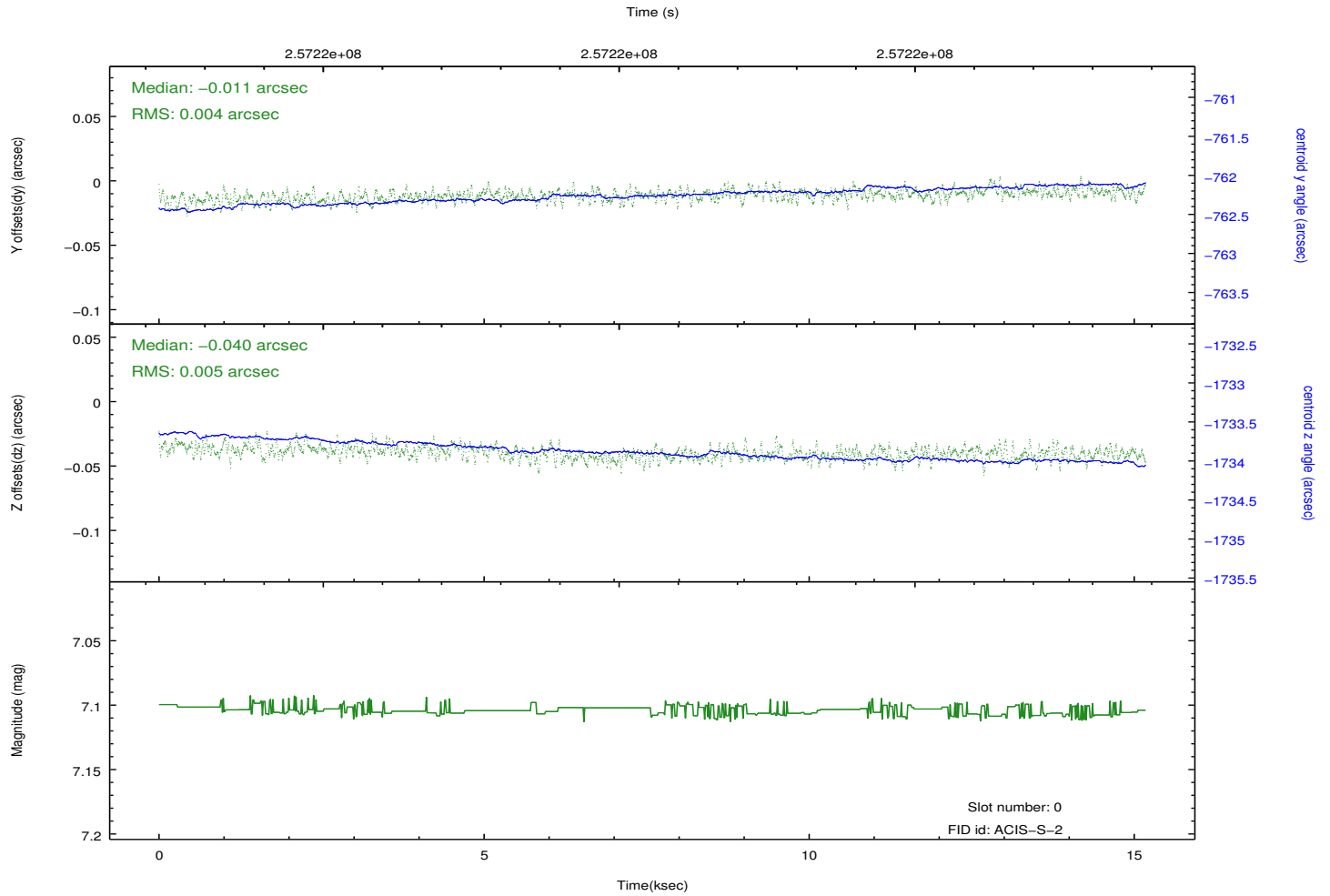
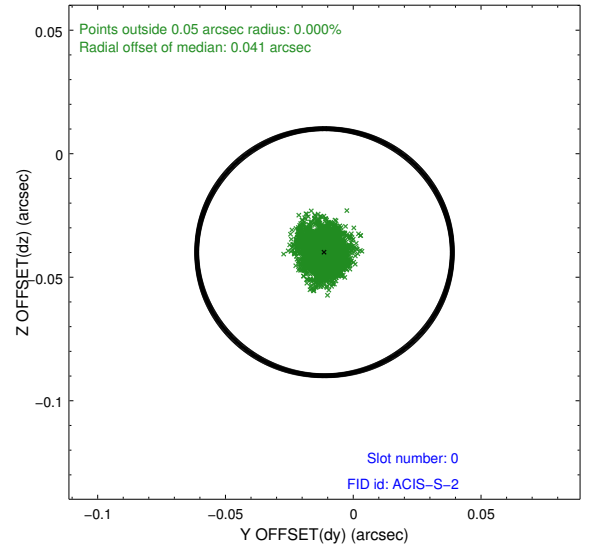
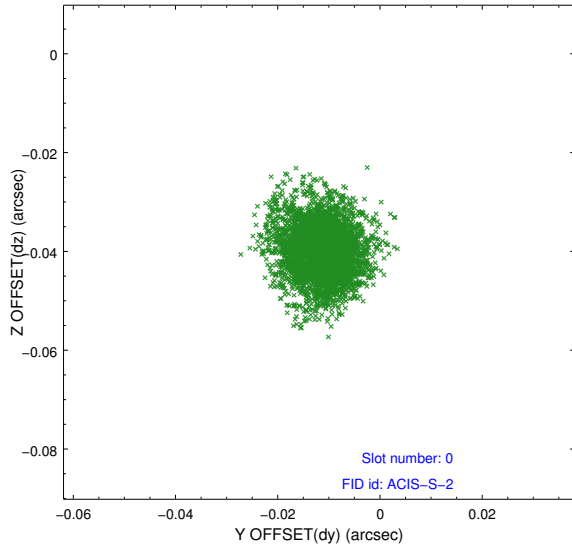


2.4.5 Slot 7

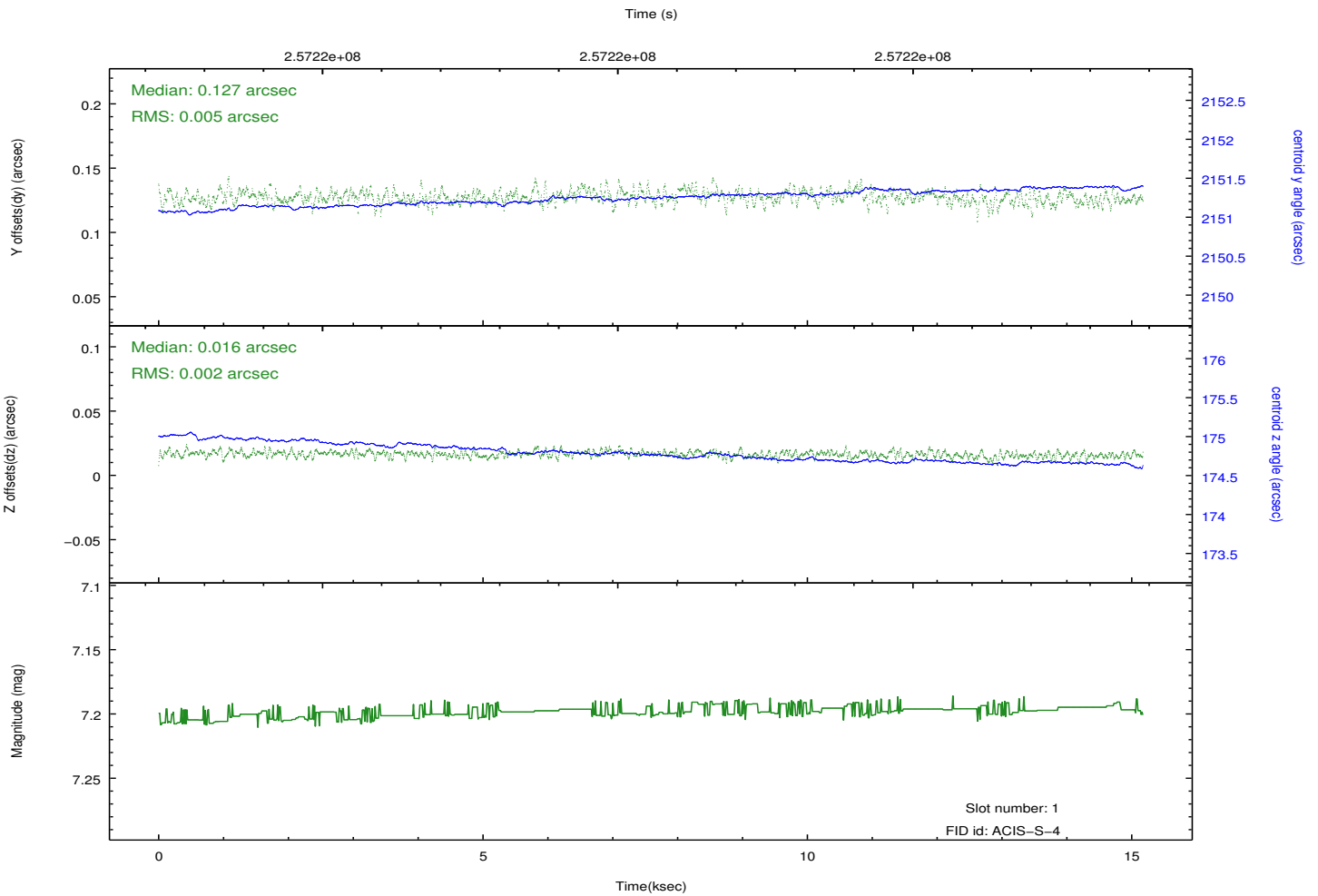
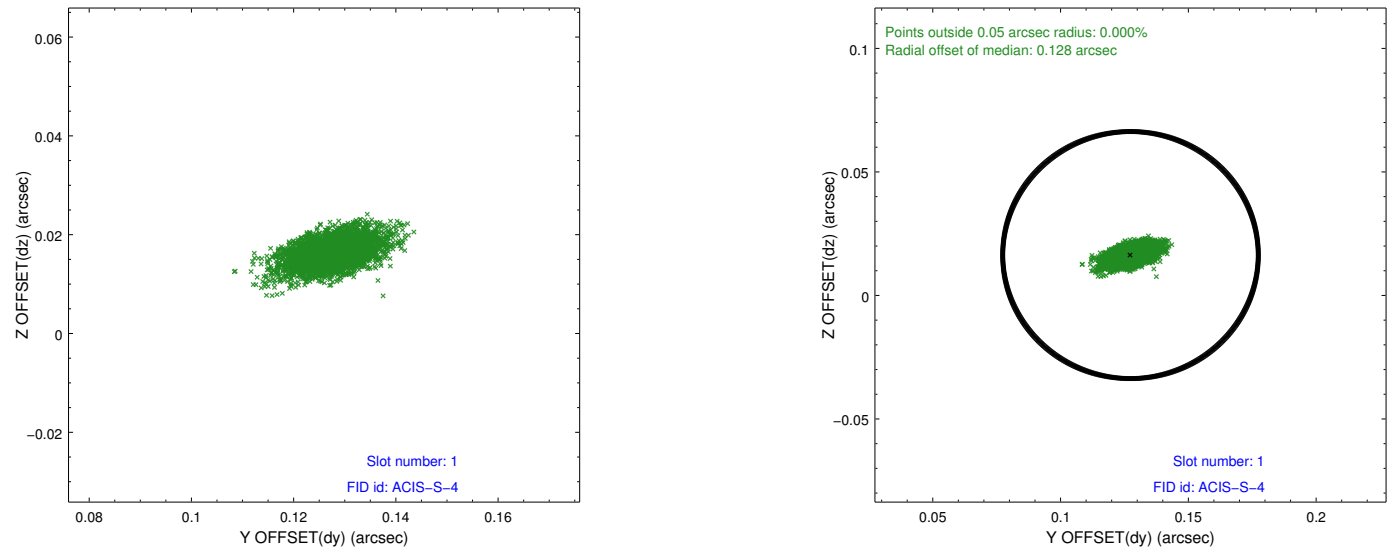


2.5 FID Slots

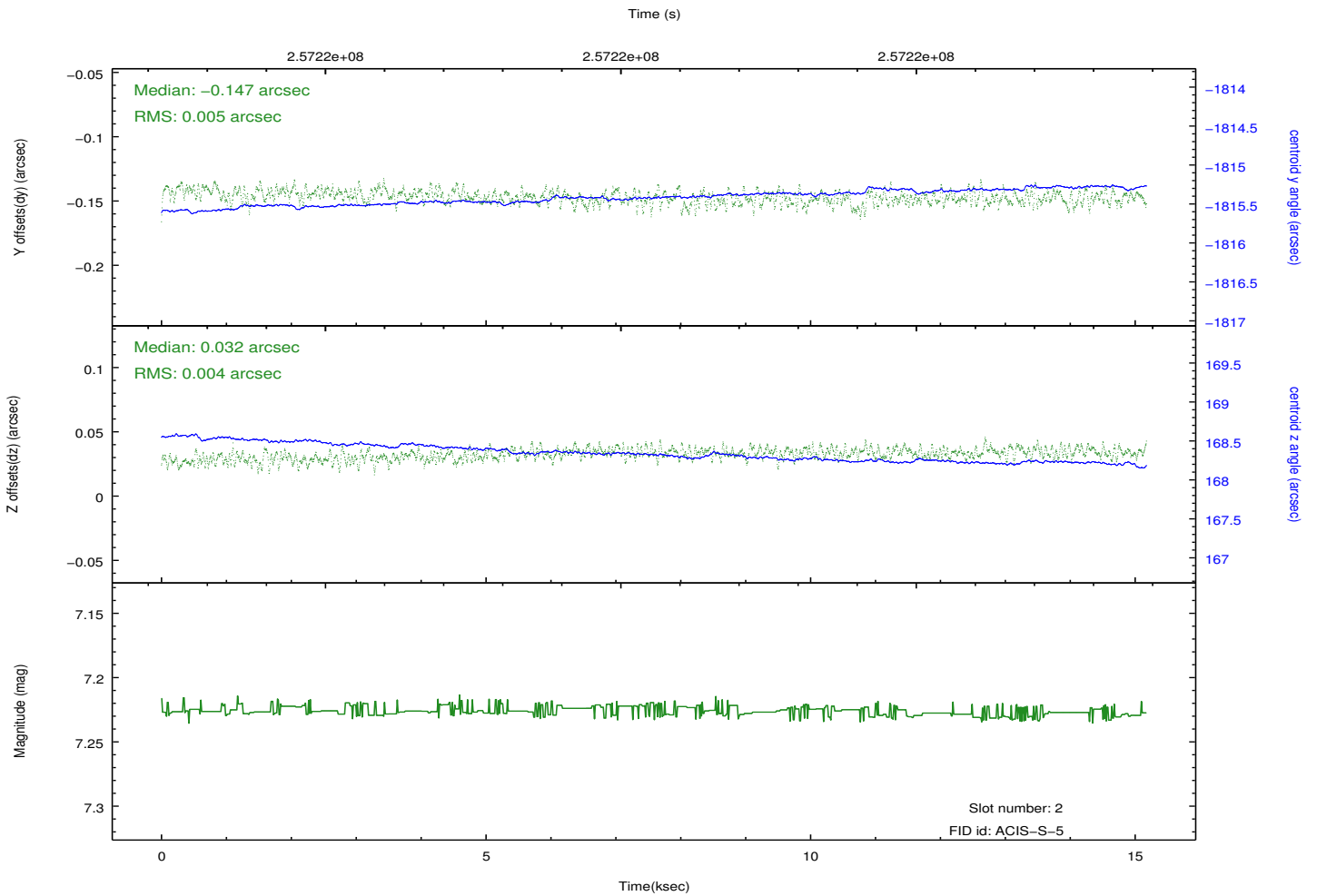
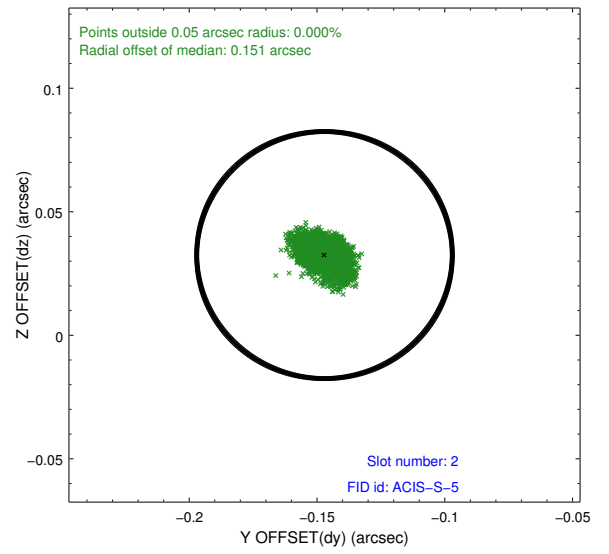
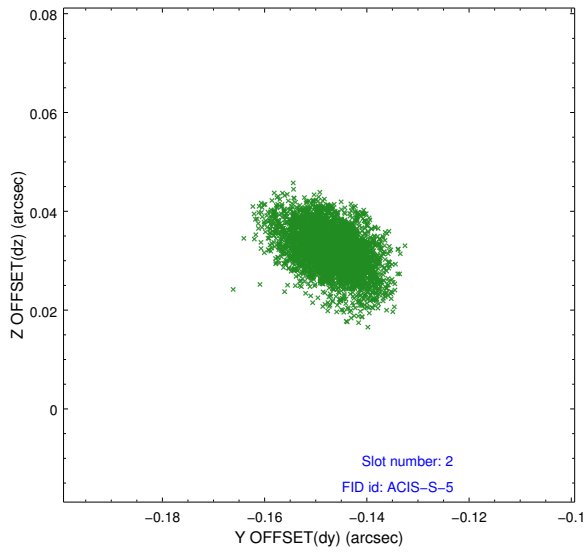
2.5.1 Slot 0



2.5.2 Slot 1



2.5.3 Slot 2



A Summary

A.1 Status

V&V Scientist	Jen Lauer
V&V Date (YYYY-MM-DD)	2012.03.28
V&V Edition	1
V&V Disposition and Status	OK
V&V Charge Time	15.1711999

A.2 Comments