

V&V Reference Report

L2 ASCDS Version : 8.4.4

Observation 6935 - L2 Version 3
Chandra X-Ray Center

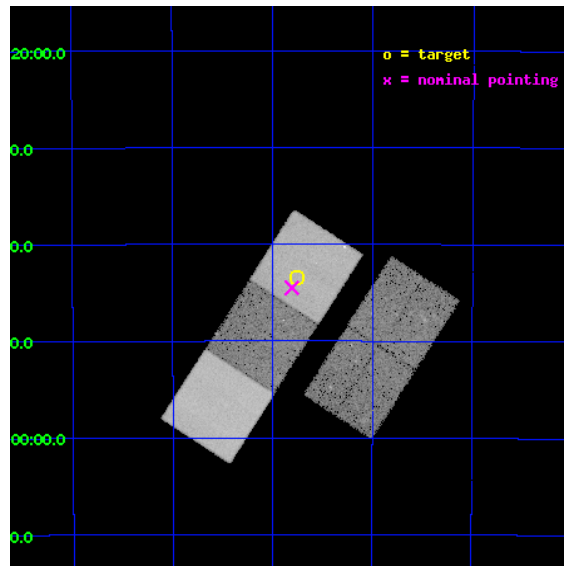
L2 Processing Date : Apr 19 2012

Contents

1	Front	2
2	OBI	3
2.1	OBI	3
2.1.1	Images	3
2.1.2	Bias	3
2.1.3	Parameters	4
2.1.4	Events	4
2.2	Compared Parameters	5
2.3	Aspect	6
2.4	Star Slots	9
2.4.1	Slot 3	9
2.4.2	Slot 4	10
2.4.3	Slot 5	11
2.4.4	Slot 6	12
2.4.5	Slot 7	13
2.5	FID Slots	14
2.5.1	Slot 0	14
2.5.2	Slot 1	15
2.5.3	Slot 2	16
A	Summary	17
A.1	Status	17
A.2	Comments	17

1 Front

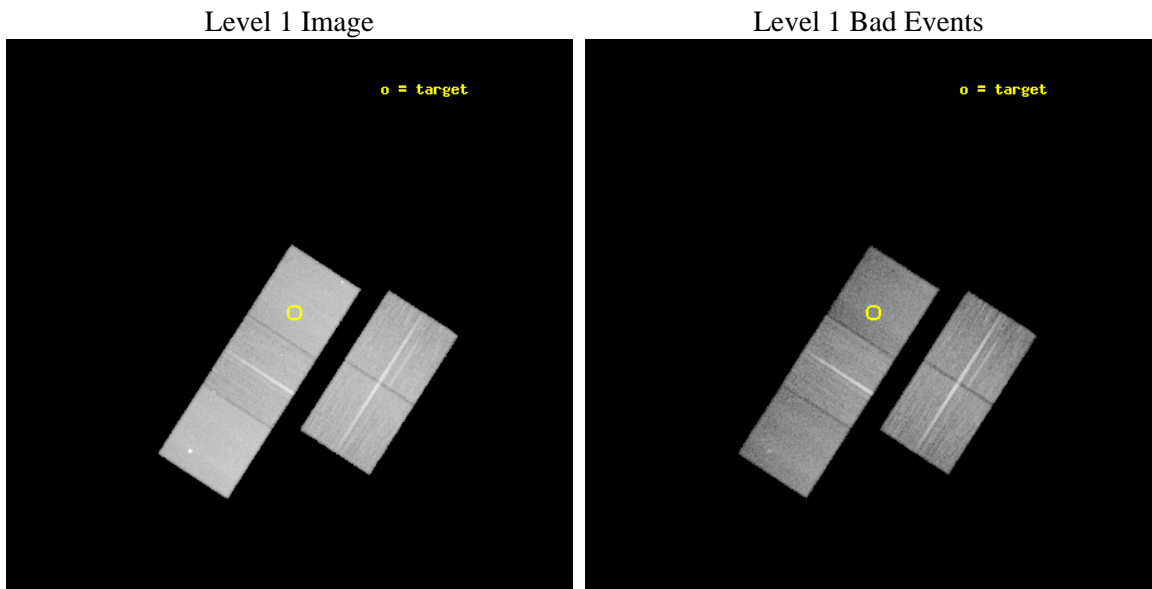
seq_num	800568	Sequence number
obs_id	6935	Observation id
title	Chandra Detection of a high redshift Sunayev-Zel'dovich Cluster Candidate	Proposal title
observer	Percy Gomez	Principal investigator
object	cmb2_mb	Source name
dtcycle	0	
cycle	P	events from which exps? Prim/Second/Both
ra_targ	74.1875	Observer's specified target RA [deg]
dec_targ	-45.723333	Observer's specified target Dec [deg]
ra_nom	74.201604934755	Nominal RA [deg]
dec_nom	-45.741698130561	Nominal Dec [deg]
roll_nom	302.76009967166	Nominal Roll [deg]
revision	3	Processing version of data
ontime	28076.481730998	Sum of GTIs [s]
livetime	27709.641827577	Livetime [s]
ontime2	28073.176610589	Sum of GTIs [s]
ontime3	28076.358610988	Sum of GTIs [s]
ontime5	28076.440690994	Sum of GTIs [s]
ontime6	28076.399650991	Sum of GTIs [s]
ontime7	28076.481730998	Sum of GTIs [s]
l2events	287810	Number of level 2 events



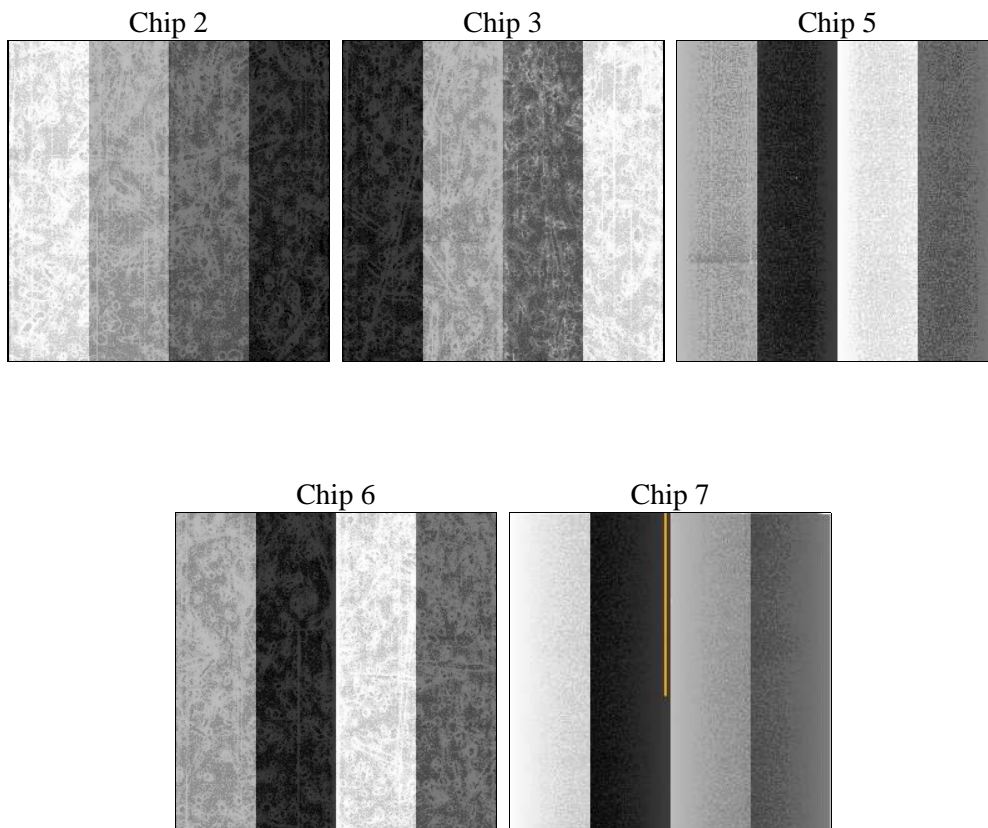
2 OBI

2.1 OBI

2.1.1 Images



2.1.2 Bias



2.1.3 Parameters

obi_num	0	Obi number	sched_exp_time	28000.000000	[s] Scheduled observation exposure time
ascdsver	8.4.4	Processing system revision	ontime	28076.481730998	Sum of GTIs [s]
caldbver	4.4.9	 	ontime2	28073.176610589	Sum of GTIs [s]
date	2012-04-19T14:51:16	Date and time of file creation	ontime3	28076.358610988	Sum of GTIs [s]
revision	3	Processing version of data	ontime5	28076.440690994	Sum of GTIs [s]
			ontime6	28076.399650991	Sum of GTIs [s]
			ontime7	28076.481730998	Sum of GTIs [s]
			l1events	1136873	Number of level 1 events

2.1.4 Events

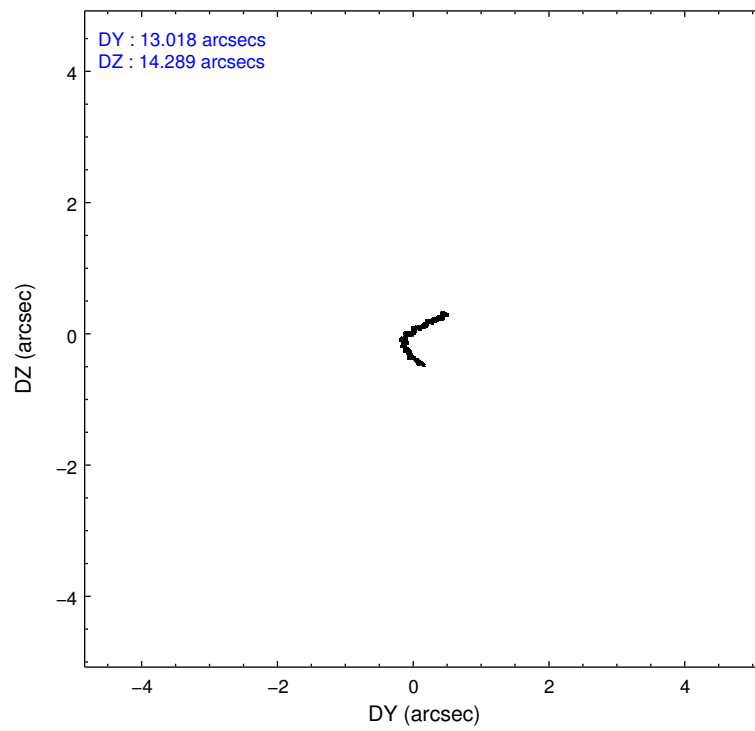
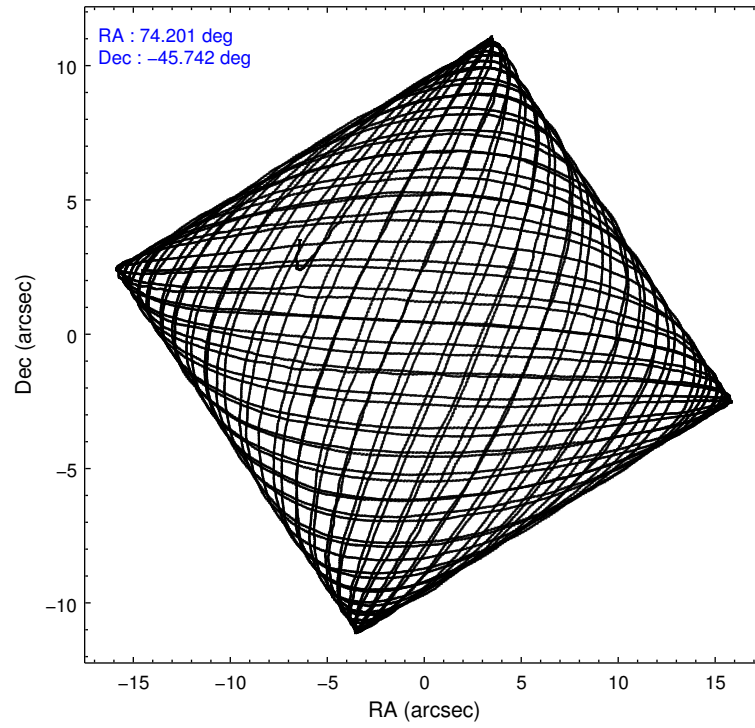
	ccd 2	ccd 3	ccd 5	ccd 6	ccd 7
level 1 events	210444	198000	283217	212140	233072
rejected events	190471	178801	143955	190563	127134
rejected %	90%	90%	50%	89%	54%

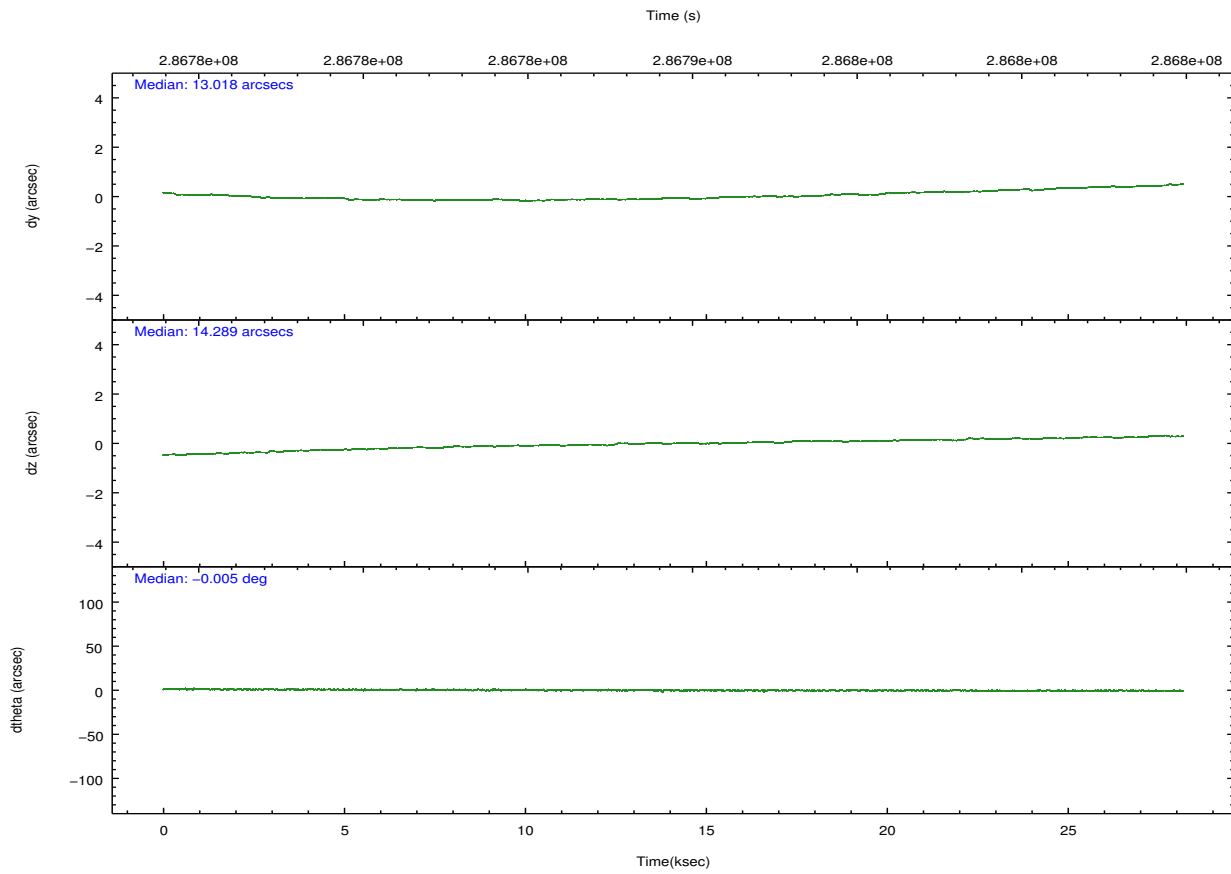
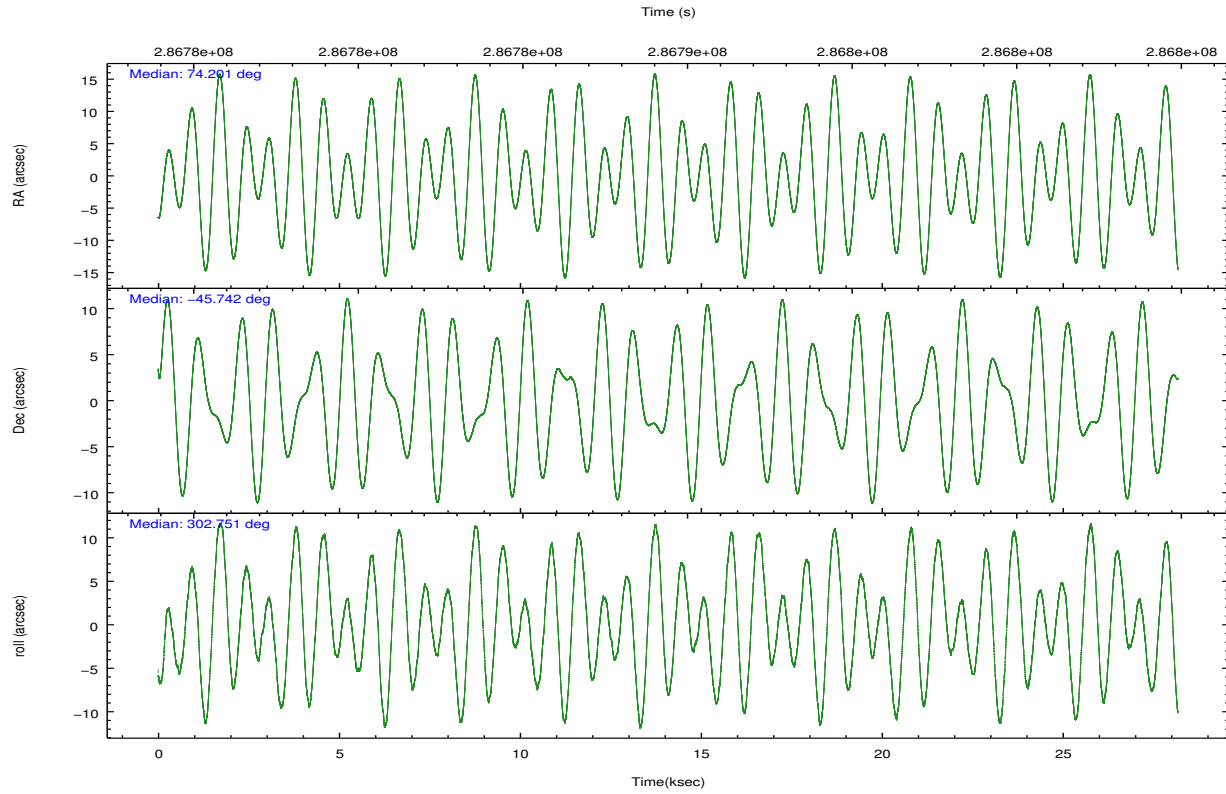
	ccd 2	ccd 3	ccd 5	ccd 6	ccd 7
grade 0 events	7220	6850	12077	7593	10270
	3%	3%	4%	3%	4%
grade 1 events	97	109	750	93	277
	0%	0%	0%	0%	0%
grade 2 events	4621	4195	41282	4746	21172
	2%	2%	14%	2%	9%
grade 3 events	2194	2159	6203	2430	9893
	1%	1%	2%	1%	4%
grade 4 events	2232	2149	6020	2267	9763
	1%	1%	2%	1%	4%
grade 5 events	6764	8064	22827	8441	24409
	3%	4%	8%	3%	10%
grade 6 events	3712	3852	73693	4543	54852
	1%	1%	26%	2%	23%
grade 7 events	183604	170622	120365	182027	102436
	87%	86%	42%	85%	43%

2.2 Compared Parameters

Parameter	Planned	Actual	Parameter	Planned	Actual
Instrument	ACIS	ACIS	Obspar format version number	7	7
Detector	ACIS-23567	ACIS-23567	Obspar file type	PREDICTED	ACTUAL
Grating	NONE	NONE	Obspar update status	NONE	UPDATED
Data mode	VFAINT	VFAINT	Number of optional ACIS chips dropped	0	0
Observation mode	POINTING	POINTING	On-chip summing requested	N	N
[deg] Pointing RA	74.166541	74.2016049347547	Subarray requested	NONE	NONE
[deg] Pointing Dec	-45.729520	-45.74169813056147	Alternating exposures requested	N	N
[deg] Pointing Roll	302.578363	302.7600996716618	[s] Primary exposure time	0.000000	3.1
[mm] SIM focus pos	-0.684267	-0.6828225247311905			
[mm] SIM defocus	0	0.001444936568705701			
[mm] SIM translation stage pos	-190.132523	-190.1400660498719			
[mm] SIM translation stage offset	0	0.00754346686406393			
[s] Observation start time (MET)	286775498.184000	286774547.98674			
Observation start date	2007-02-02T03:50:33	2007-02-02T03:35:47			
[s] Observation end time (MET)	286803498.184000	286804508.73816			
Observation end date	2007-02-02T11:37:13	2007-02-02T11:55:08			
Read mode	TIMED	TIMED			

2.3 Aspect



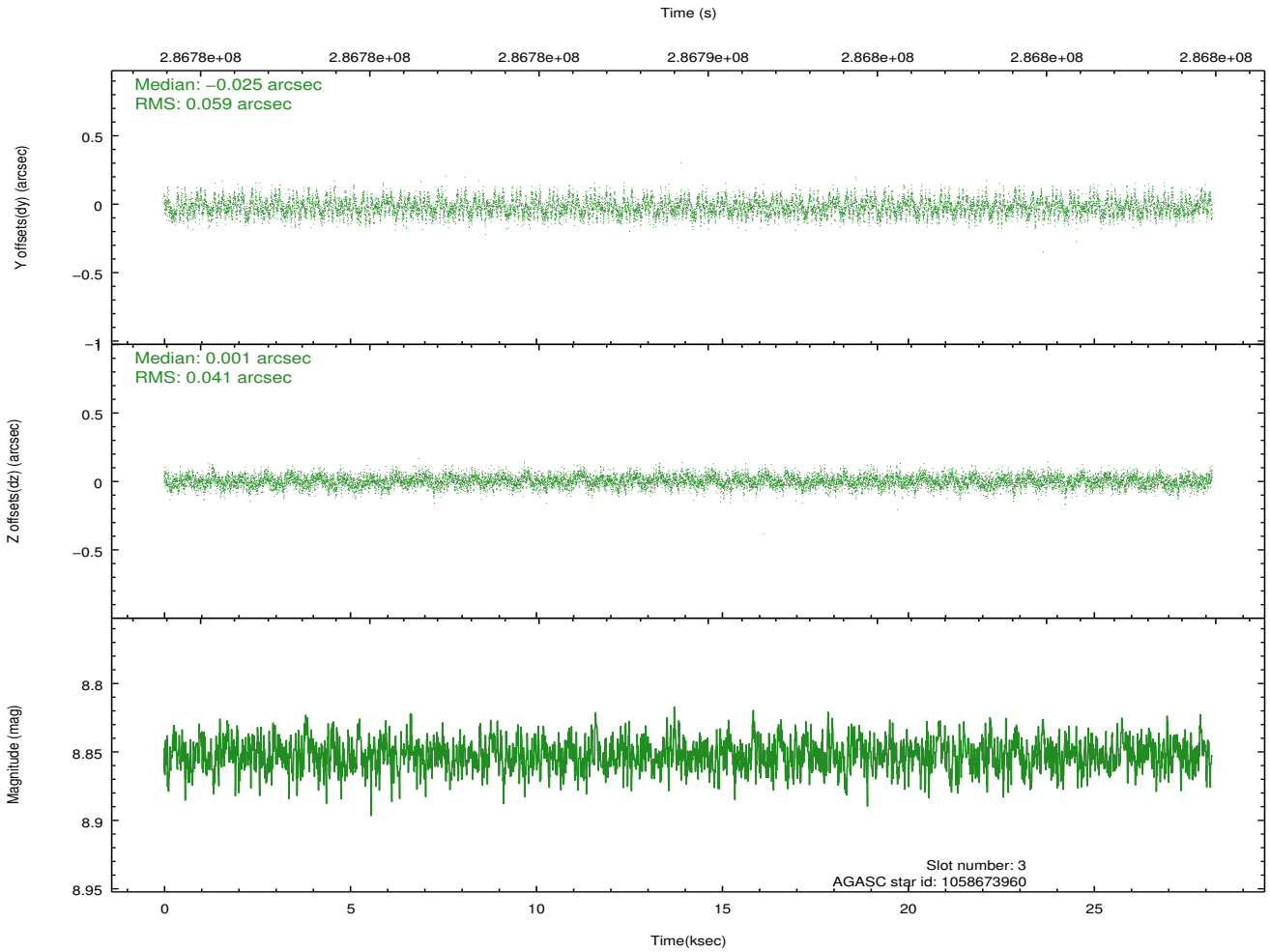
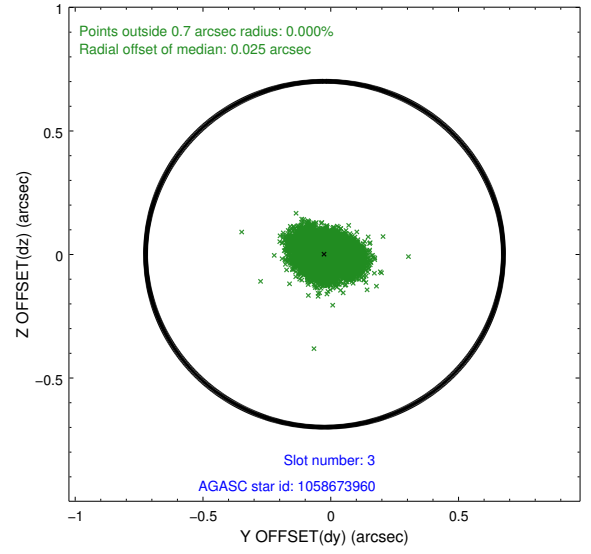
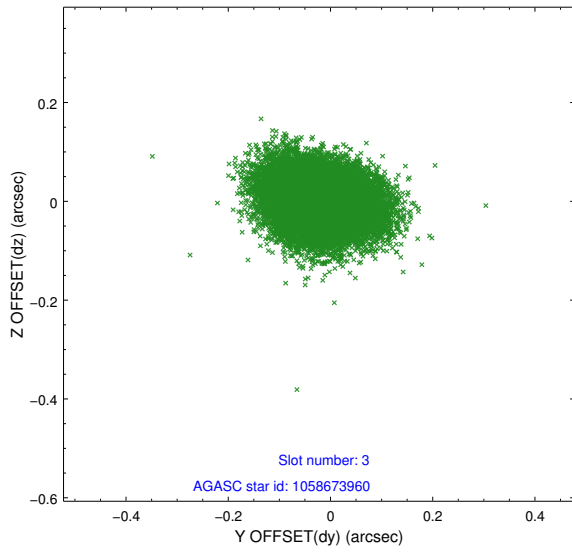


Slot Statistics

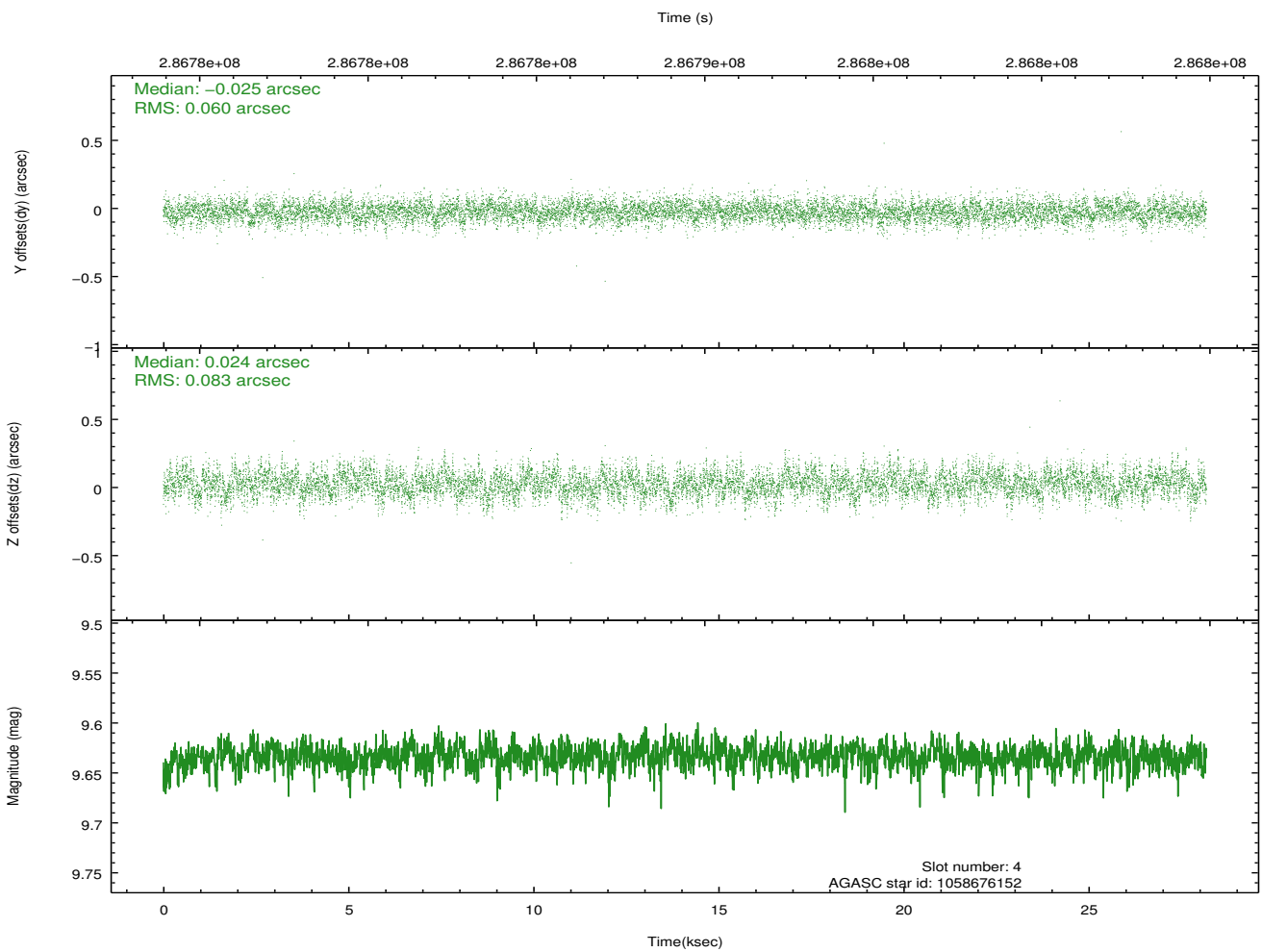
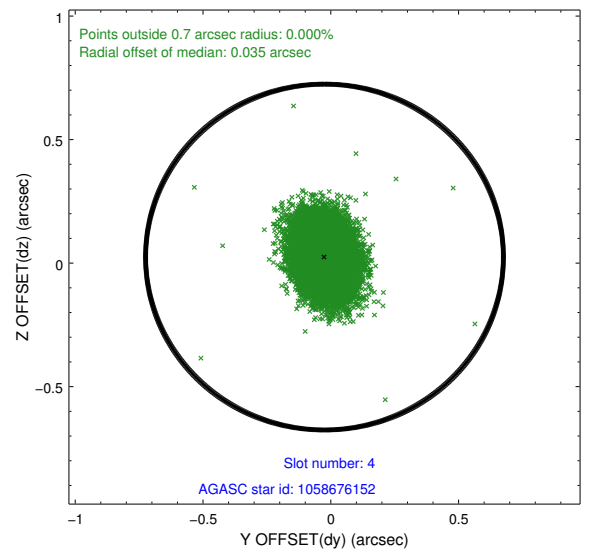
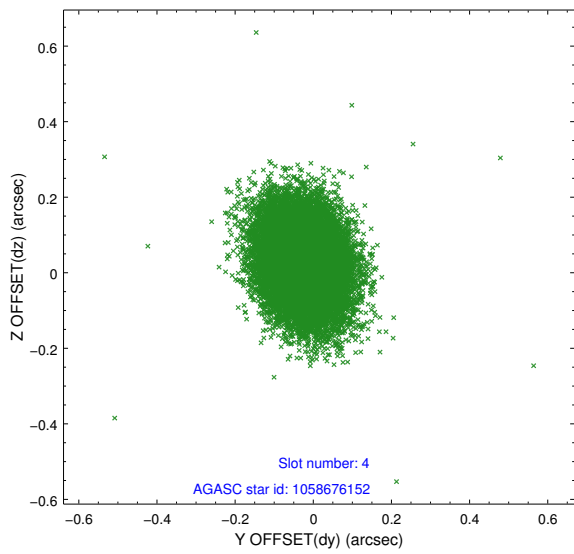
slot	status	id	mag	n_pts	med_dy	med_dz	dr1	dr2	ra	dec	mean_y	mean_z
0	FID	ACIS-S-2	7.09	6874	-0.043	-0.052	0.010	0.017	0.000000	0.000000	-766.01	-1735.68
1	FID	ACIS-S-4	7.20	6873	0.175	0.035	0.011	0.028	0.000000	0.000000	2147.43	172.83
2	FID	ACIS-S-5	7.23	6874	-0.164	0.025	0.010	0.016	0.000000	0.000000	-1818.88	166.55
3	GUIDE	1058673960	8.85	13733	-0.025	0.001	0.077	0.124	74.061999	-46.449909	2046.54	-1614.51
4	GUIDE	1058676152	9.63	13733	-0.025	0.024	0.107	0.178	73.691951	-46.367095	1303.21	-2230.92
5	GUIDE	1058677640	8.69	13739	-0.020	0.049	0.108	0.182	74.472591	-45.148227	-1343.57	1780.74
6	GUIDE	1058678928	9.66	13609	0.011	-0.063	0.114	0.196	73.978526	-45.475020	-1026.82	93.31
7	GUIDE	1058670496	9.12	13738	0.058	-0.022	0.088	0.146	74.092757	-46.540241	2361.80	-1724.86

2.4 Star Slots

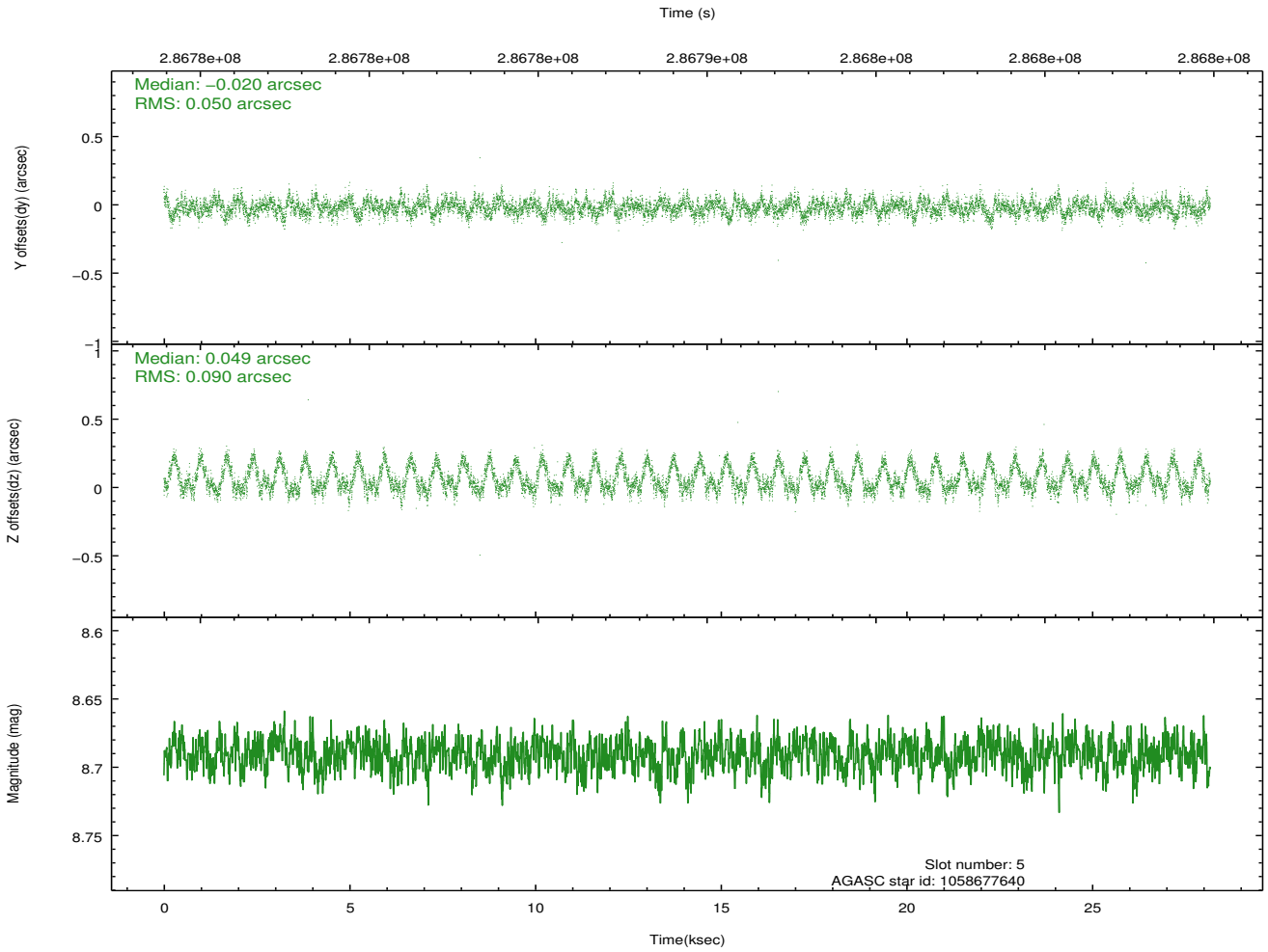
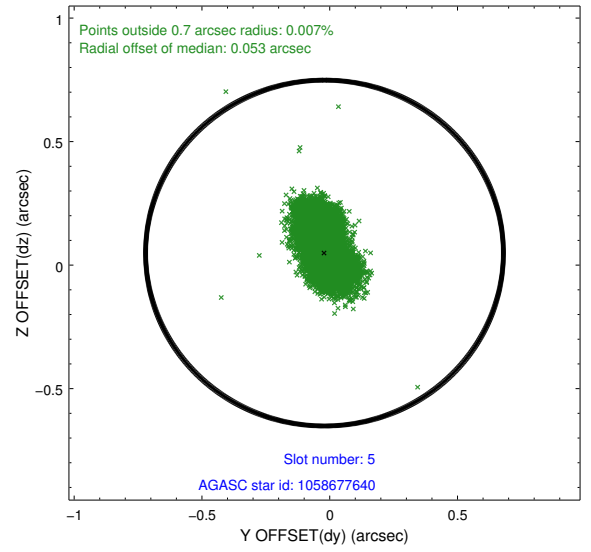
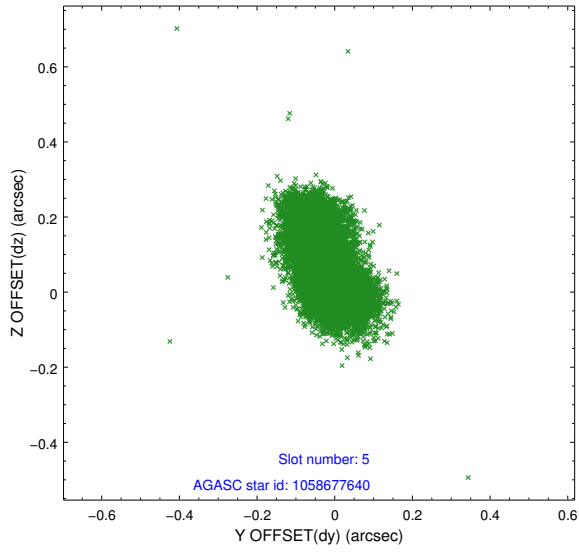
2.4.1 Slot 3



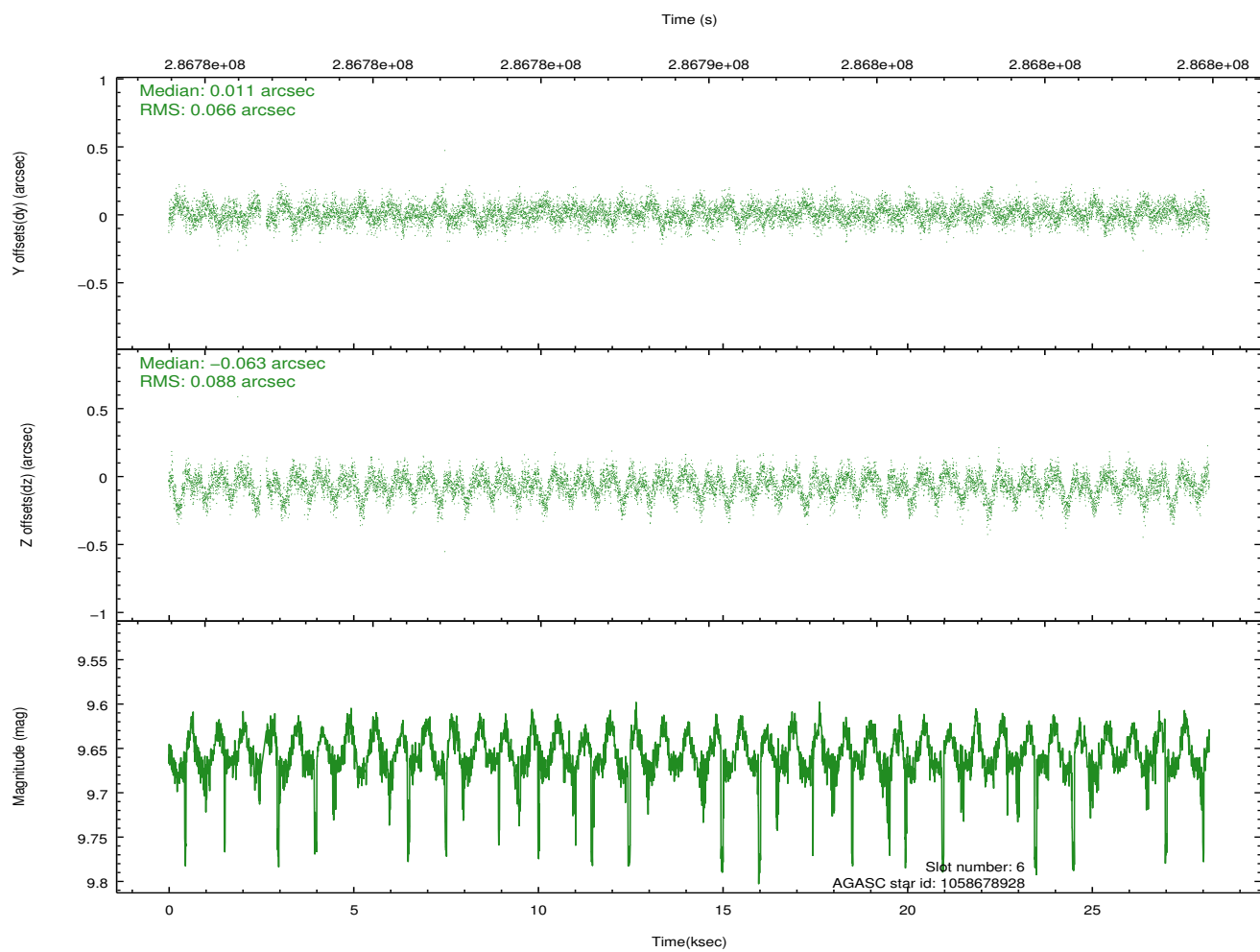
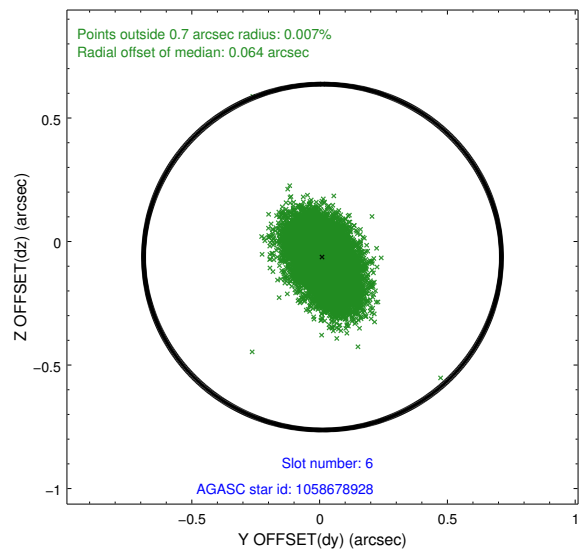
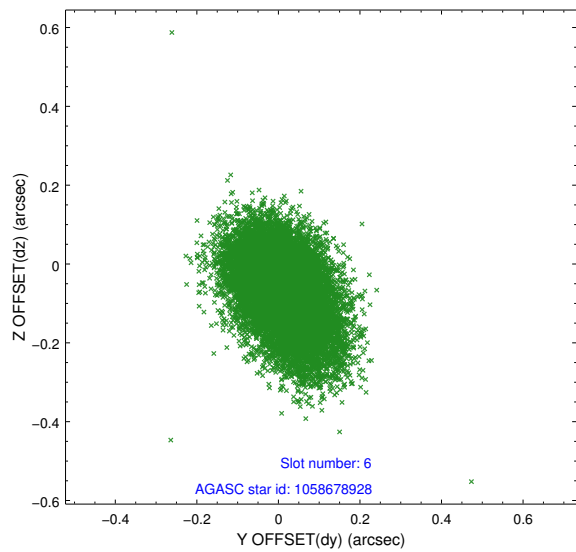
2.4.2 Slot 4



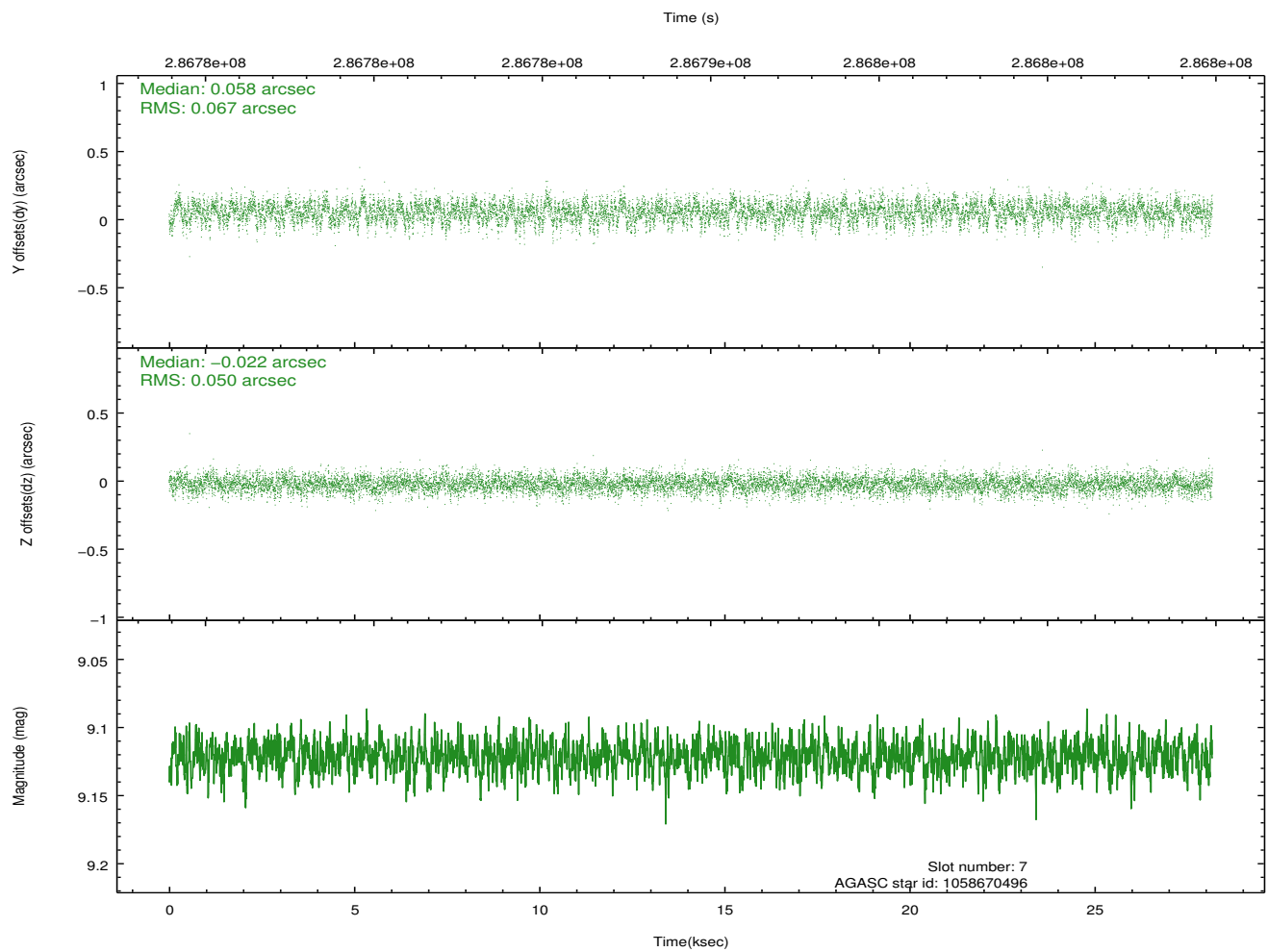
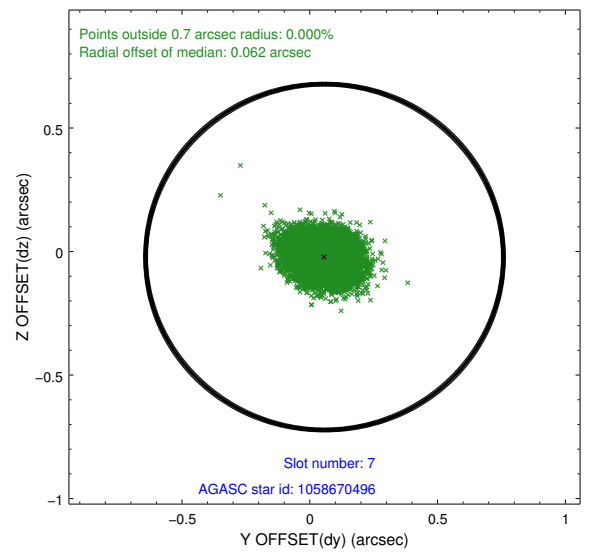
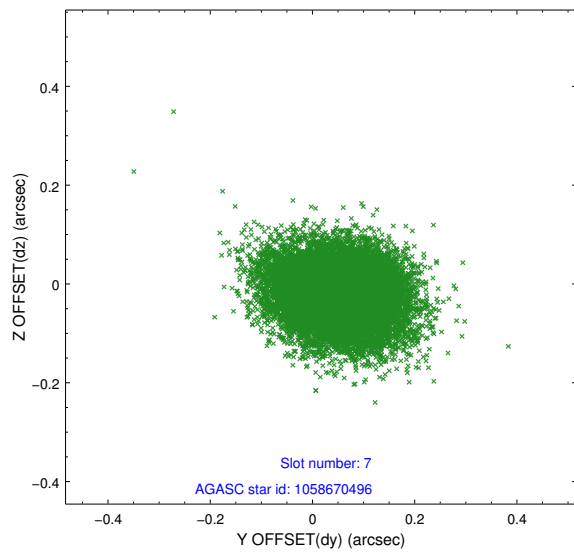
2.4.3 Slot 5



2.4.4 Slot 6

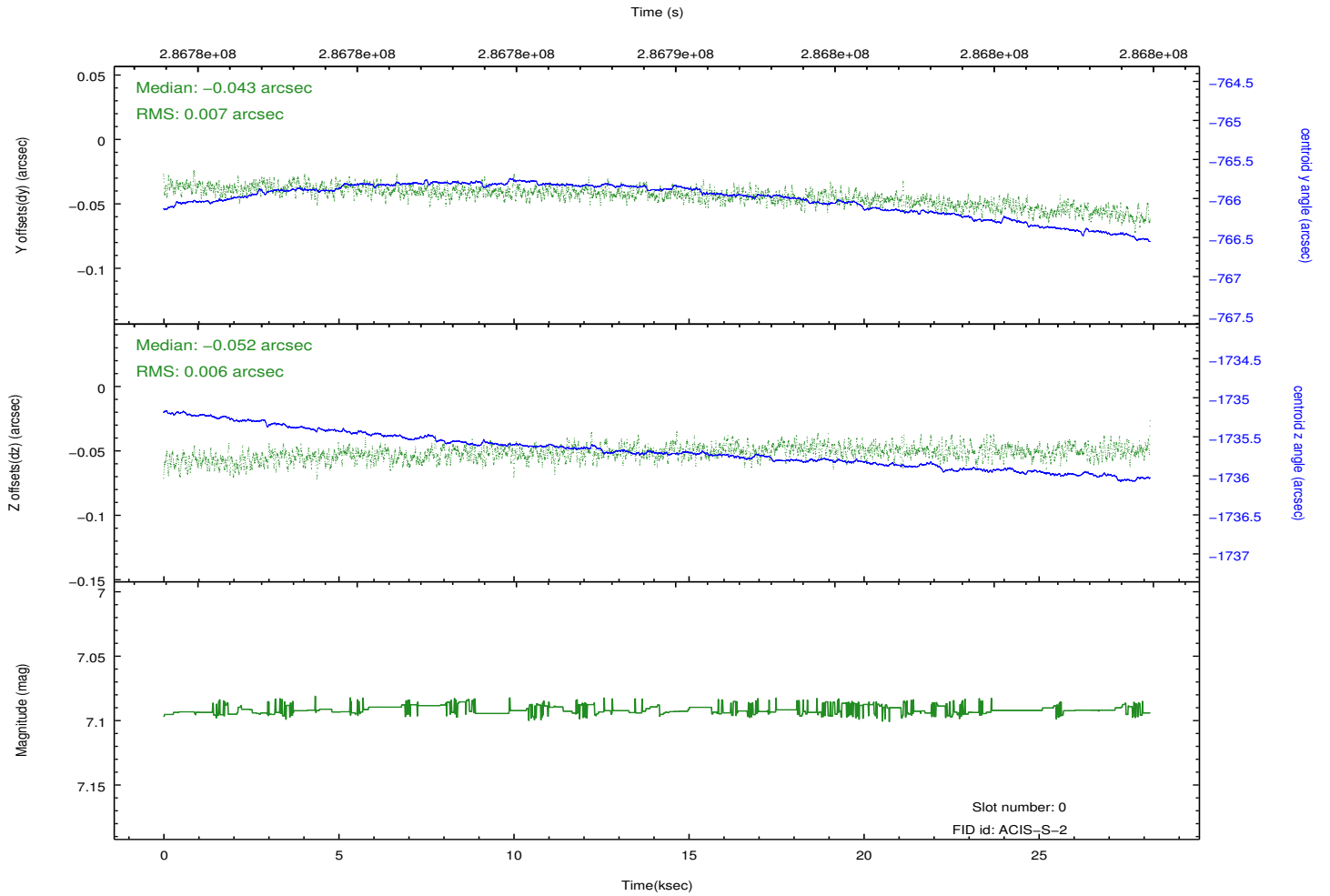
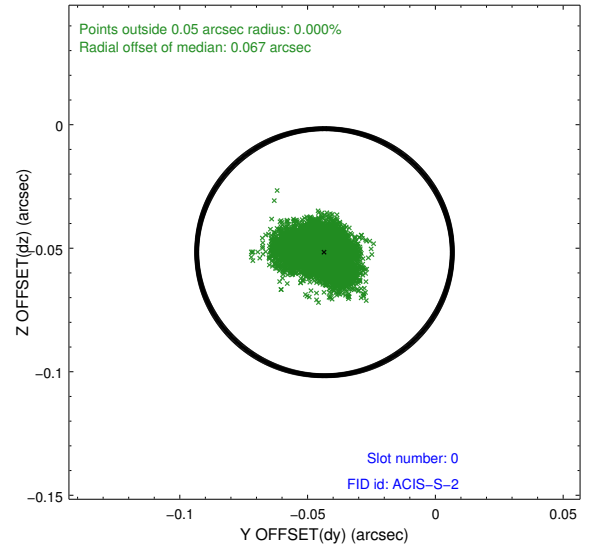
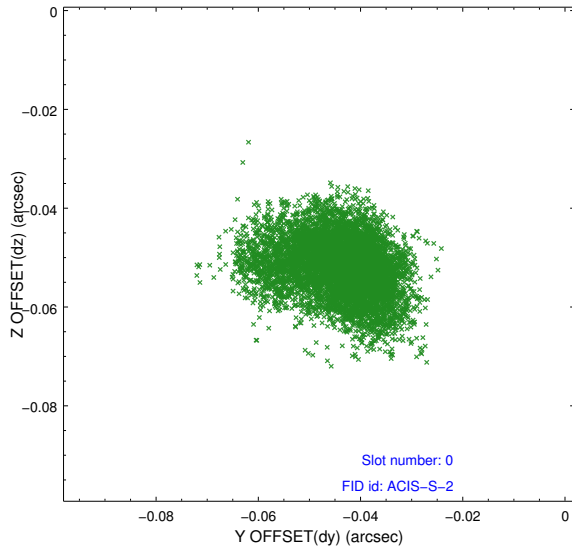


2.4.5 Slot 7

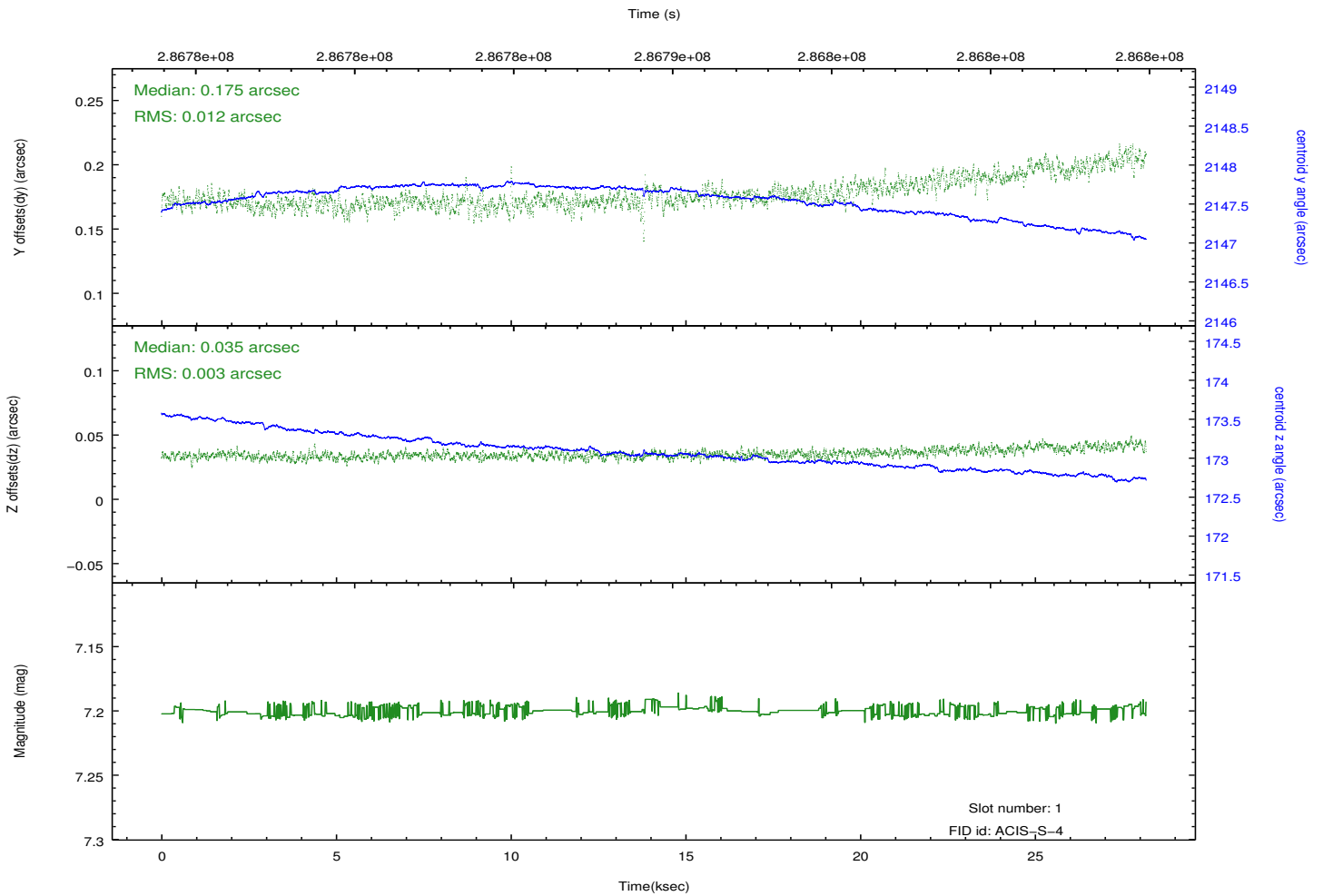
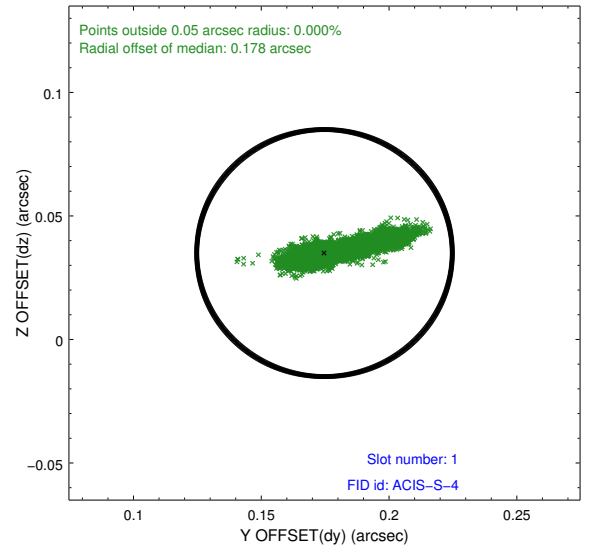
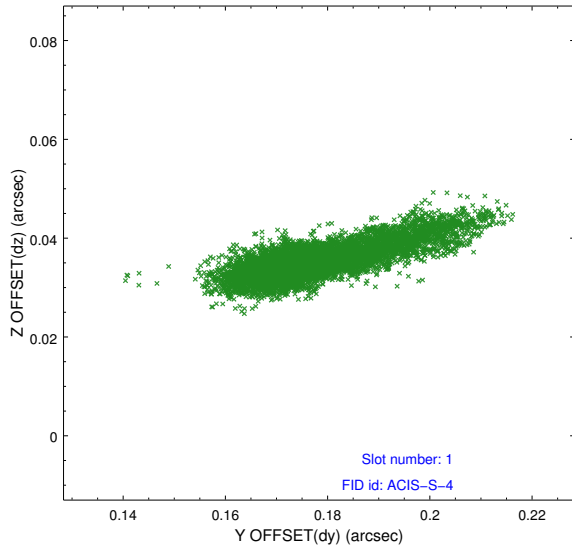


2.5 FID Slots

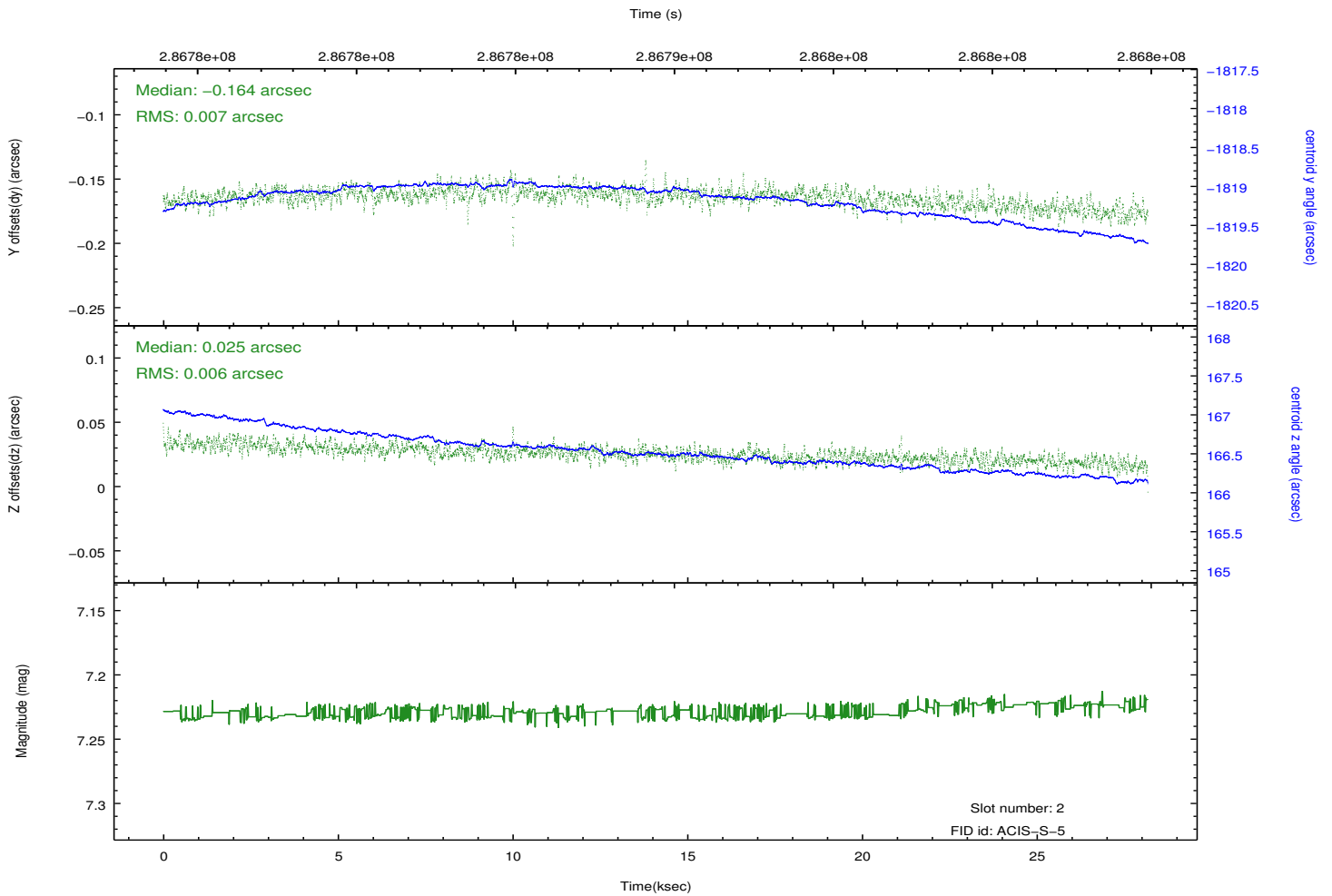
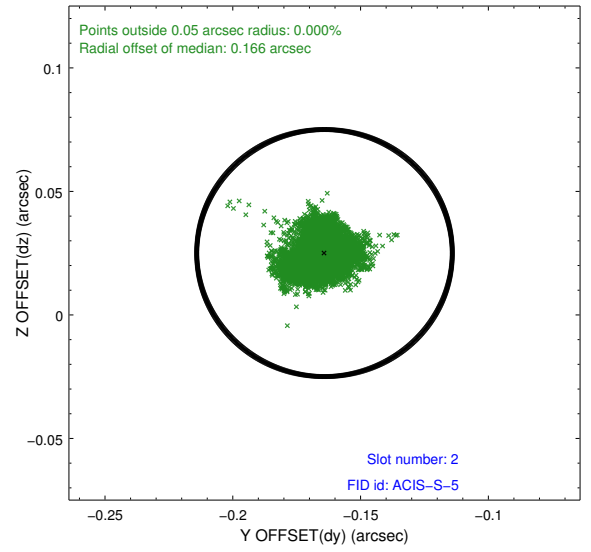
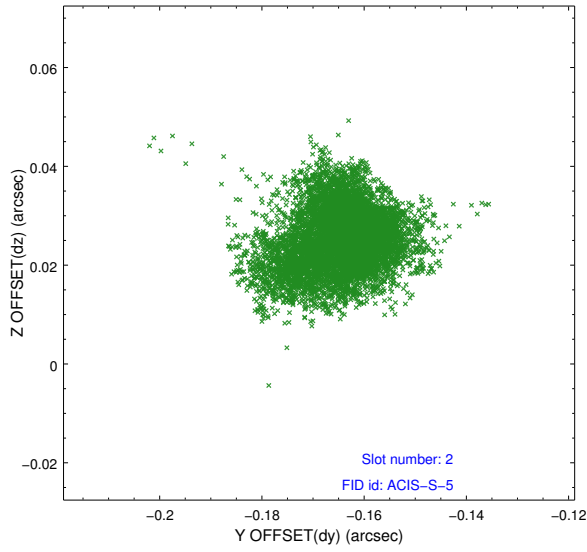
2.5.1 Slot 0



2.5.2 Slot 1



2.5.3 Slot 2



A Summary

A.1 Status

V&V Scientist	Beth Sundheim
V&V Date (YYYY-MM-DD)	2012.04.20
V&V Edition	1
V&V Disposition and Status	OK
V&V Charge Time	28.0767002

A.2 Comments