

V&V Reference Report

L2 ASCDS Version : 8.4.3.1

Observation 6955 - L2 Version 2
Chandra X-Ray Center

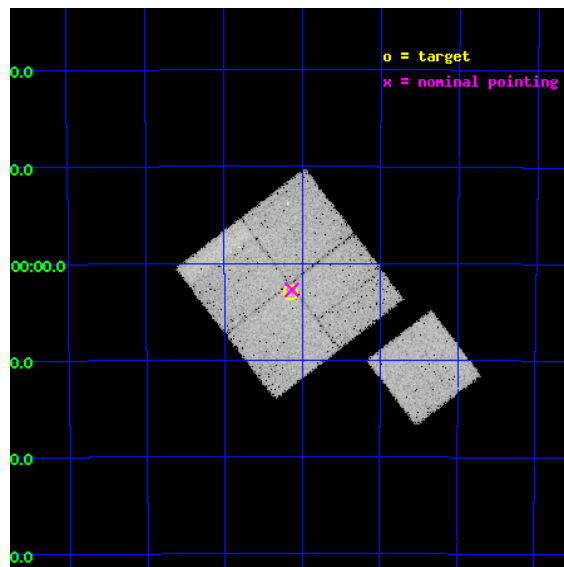
L2 Processing Date : Apr 4 2012

Contents

1	Front	2
2	OBI	3
2.1	OBI	3
2.1.1	Images	3
2.1.2	Bias	3
2.1.3	Parameters	4
2.1.4	Events	4
2.2	Compared Parameters	5
2.3	Aspect	6
2.4	Star Slots	9
2.4.1	Slot 3	9
2.4.2	Slot 4	10
2.4.3	Slot 5	11
2.4.4	Slot 6	12
2.4.5	Slot 7	13
2.5	FID Slots	14
2.5.1	Slot 0	14
2.5.2	Slot 1	15
2.5.3	Slot 2	16
A	Summary	17
A.1	Status	17
A.2	Comments	17

1 Front

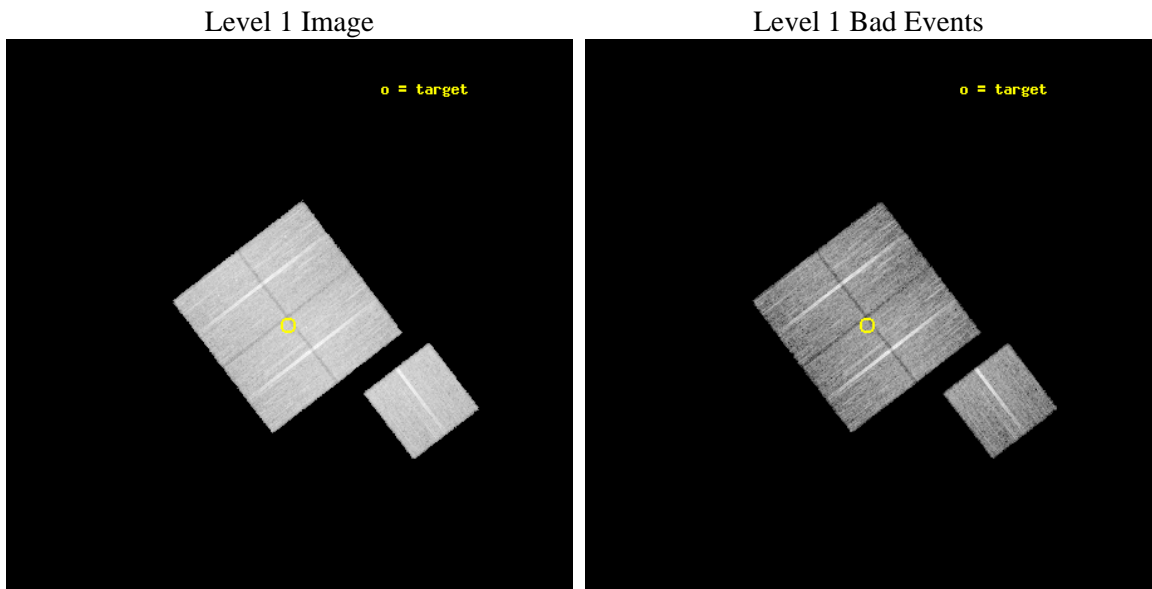
seq_num	800588	Sequence number
obs_id	6955	Observation id
title	Chandra Study of the Structure of the Southern Part of the Horologium Supercluster	Proposal title
observer	Dr. Hans Boehringer	Principal investigator
object	A3164	Source name
dtcycle	0	
cycle	P	events from which exps? Prim/Second/Both
ra_targ	56.5375	Observer's specified target RA [deg]
dec_targ	-57.05	Observer's specified target Dec [deg]
ra_nom	56.533328663884	Nominal RA [deg]
dec_nom	-57.04598262994	Nominal Dec [deg]
roll_nom	142.55151341742	Nominal Roll [deg]
revision	2	Processing version of data
ontime	13689.599973649	Sum of GTIs [s]
livetime	13510.735271856	Livetime [s]
ontime0	13686.458983451	Sum of GTIs [s]
ontime1	13686.459003359	Sum of GTIs [s]
ontime2	13686.459003389	Sum of GTIs [s]
ontime3	13689.599973649	Sum of GTIs [s]
ontime6	13689.599973649	Sum of GTIs [s]
l2events	102422	Number of level 2 events



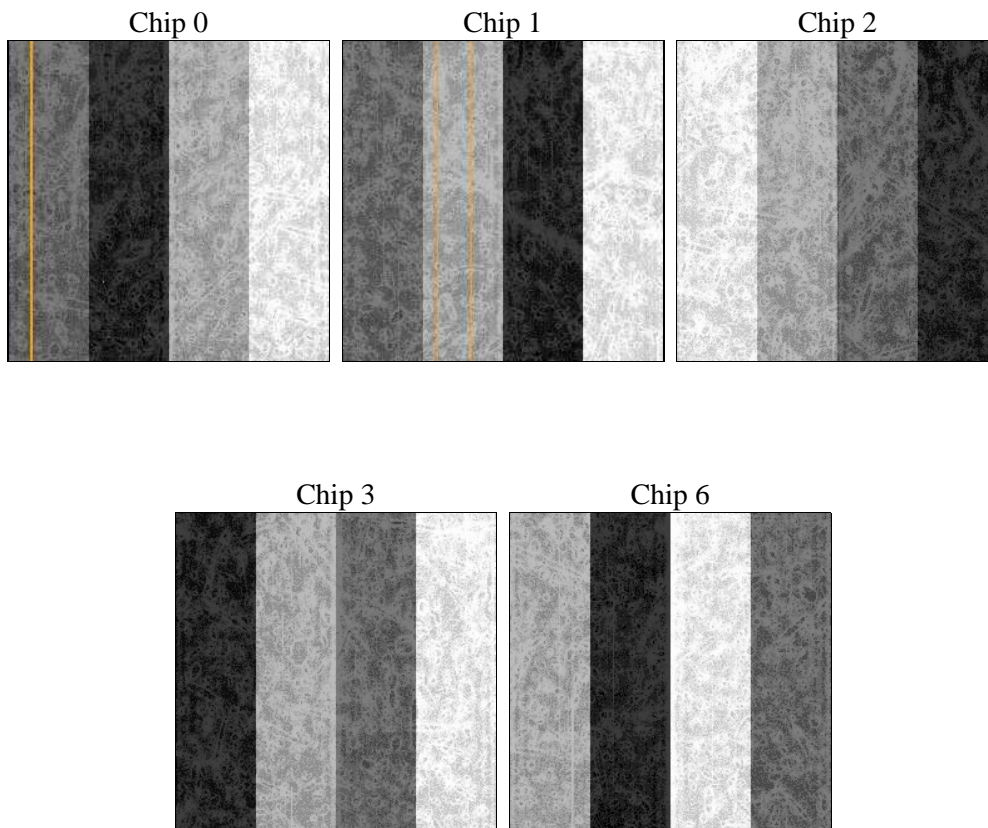
2 OBI

2.1 OBI

2.1.1 Images



2.1.2 Bias



2.1.3 Parameters

obi_num	1	Obi number	sched_exp_time	13578.441000	[s] Scheduled observation exposure time
ascdsver	8.4.3.1	Processing system revision	ontime	13689.599973649	Sum of GTIs [s]
caldsver	4.4.9	 	ontime0	13686.458983451	Sum of GTIs [s]
date	2012-04-04T05:22:17	Date and time of file creation	ontime1	13686.459003359	Sum of GTIs [s]
revision	2	Processing version of data	ontime2	13686.459003389	Sum of GTIs [s]
			ontime3	13689.599973649	Sum of GTIs [s]
			ontime6	13689.599973649	Sum of GTIs [s]
			l1events	625098	Number of level 1 events

2.1.4 Events

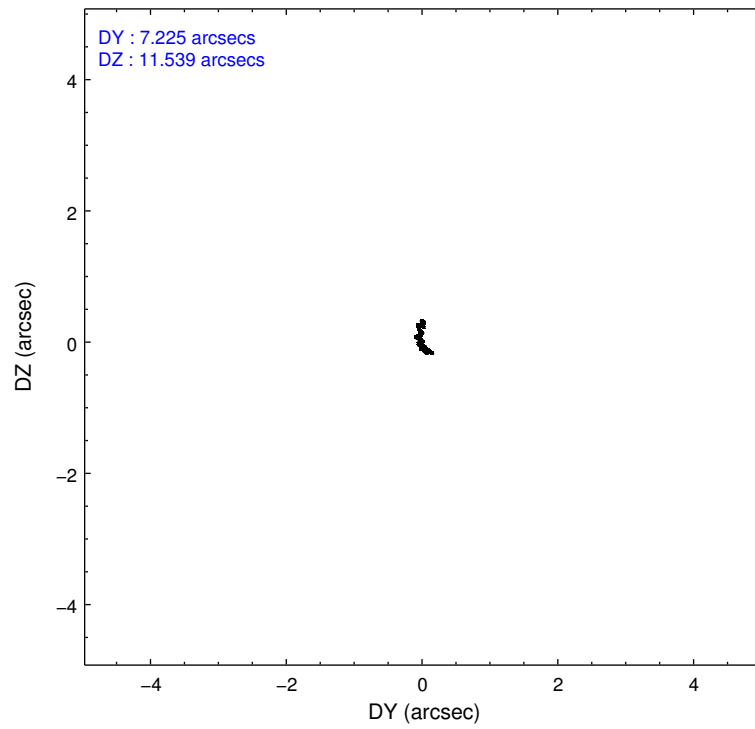
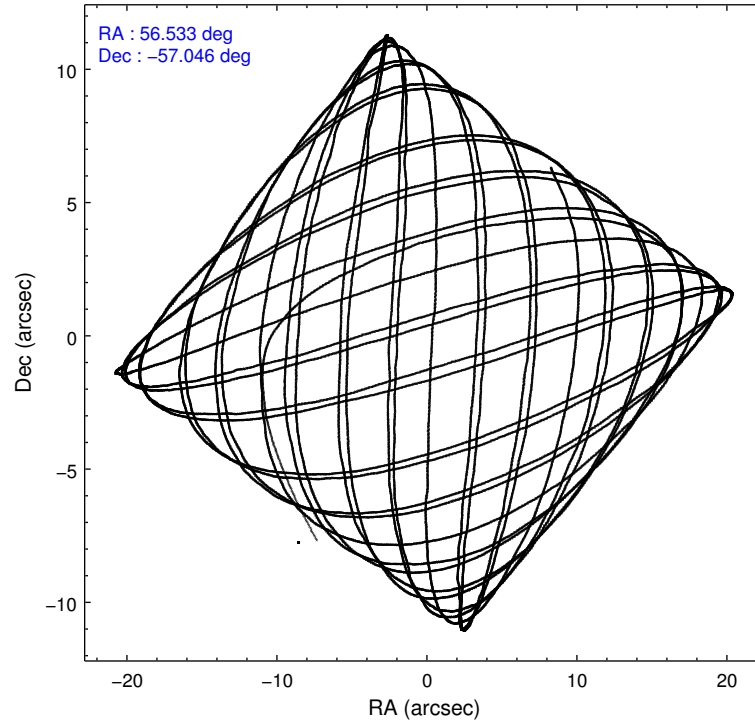
	ccd 0	ccd 1	ccd 2	ccd 3	ccd 6
level 1 events	121308	120850	132118	124823	125999
rejected events	99064	95341	110081	102781	103008
rejected %	81%	78%	83%	82%	81%

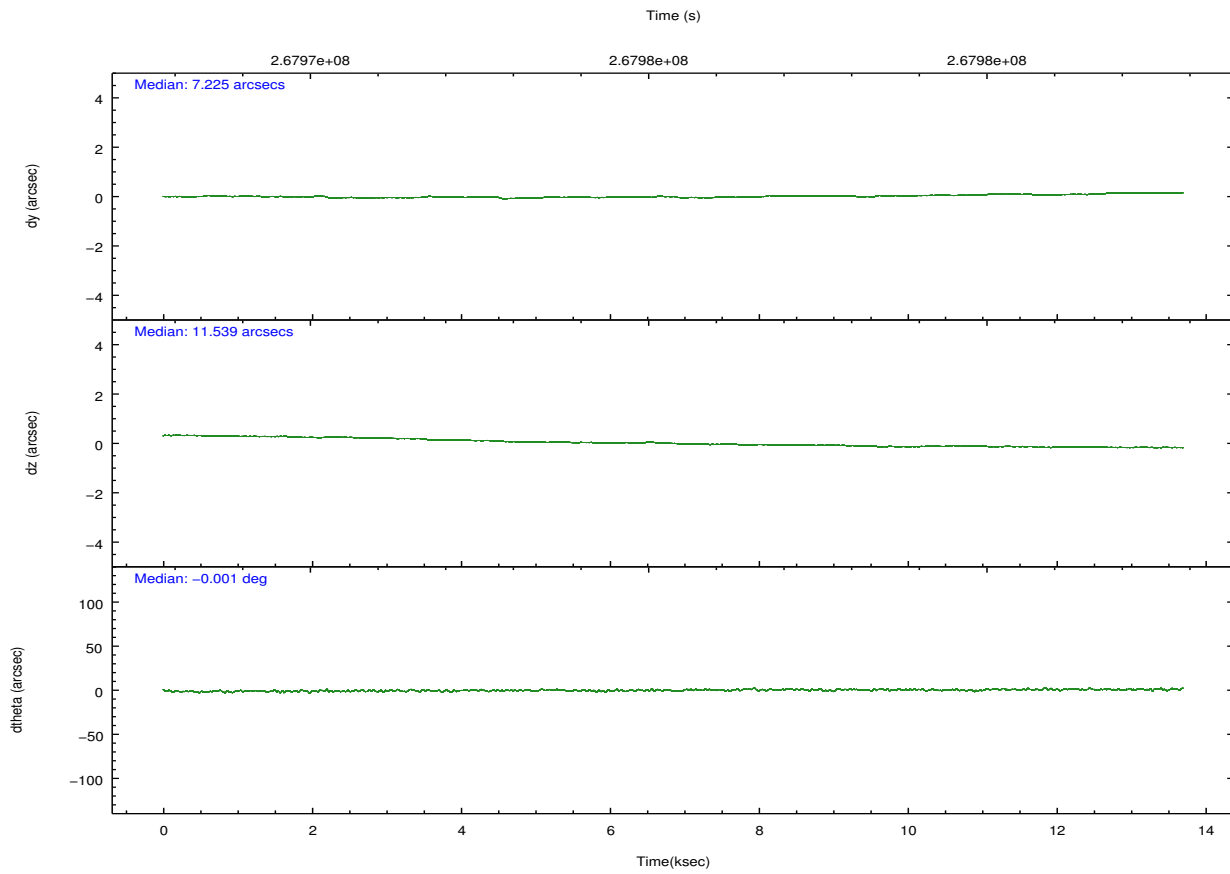
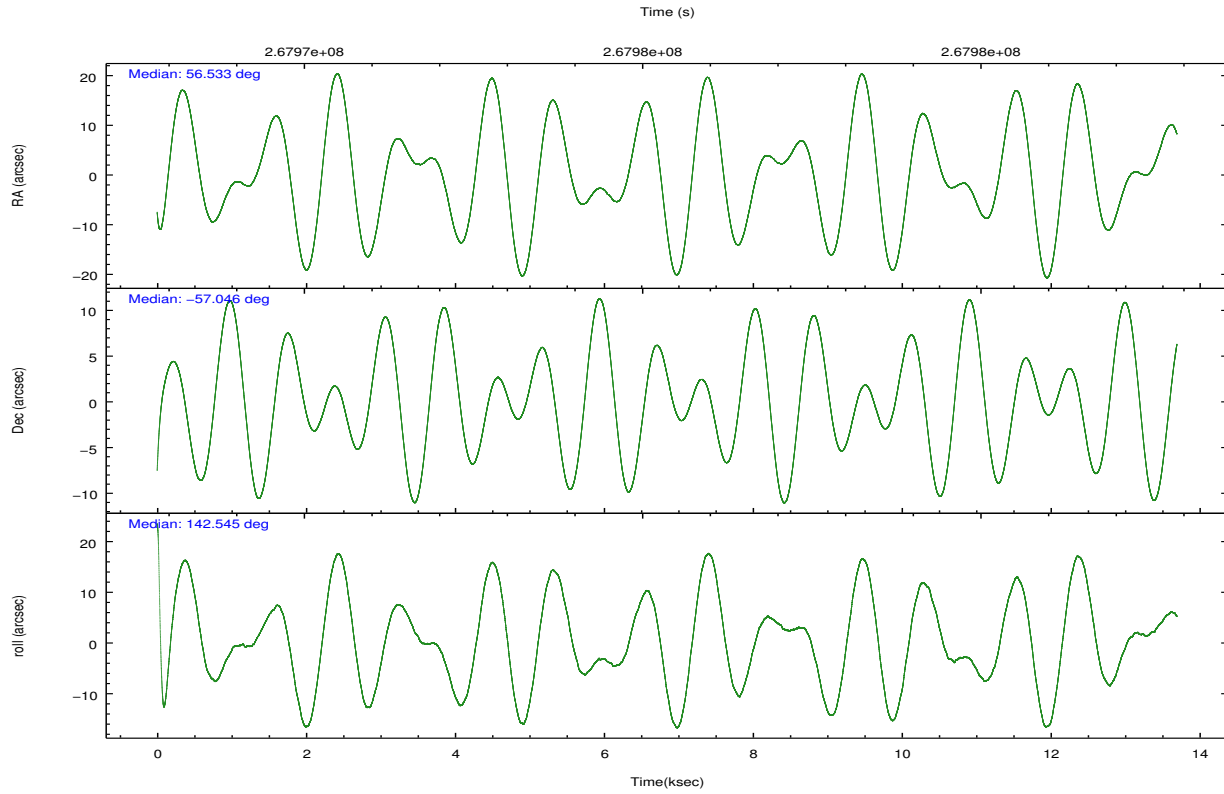
	ccd 0	ccd 1	ccd 2	ccd 3	ccd 6
grade 0 events	11856	13770	12122	12201	12154
	9%	11%	9%	9%	9%
grade 1 events	117	111	120	105	103
	0%	0%	0%	0%	0%
grade 2 events	4087	4755	4073	3727	4011
	3%	3%	3%	2%	3%
grade 3 events	1864	1889	1683	1755	1845
	1%	1%	1%	1%	1%
grade 4 events	1694	1922	1718	1728	1775
	1%	1%	1%	1%	1%
grade 5 events	3786	4286	3654	4388	4461
	3%	3%	2%	3%	3%
grade 6 events	3501	3999	3193	3350	3964
	2%	3%	2%	2%	3%
grade 7 events	94403	90118	105555	97569	97686
	77%	74%	79%	78%	77%

2.2 Compared Parameters

Parameter	Planned	Actual	Parameter	Planned	Actual
Instrument	ACIS	ACIS	Obspar format version number	7	7
Detector	ACIS-01236	ACIS-01236	Obspar file type	PREDICTED	ACTUAL
Grating	NONE	NONE	Obspar update status	NONE	UPDATED
Data mode	VFAINT	VFAINT	Number of optional ACIS chips dropped	0	0
Observation mode	POINTING	POINTING	On-chip summing requested	N	N
[deg] Pointing RA	56.583243	56.53332866388365	Subarray requested	NONE	NONE
[deg] Pointing Dec	-57.049392	-57.04598262994041	Alternating exposures requested	N	N
[deg] Pointing Roll	142.384671	142.5515134174246	[s] Primary exposure time	0.000000	3.1
[mm] SIM focus pos	-0.782348	-0.7809083437167272			
[mm] SIM defocus	0	0.001439871863259334			
[mm] SIM translation stage pos	-233.592463	-233.5874344608287			
[mm] SIM translation stage offset	0	-0.005018542100998502			
[s] Observation start time (MET)	267968622.184000	267967173.67537			
Observation start date	2006-06-29T11:42:37	2006-06-29T11:19:33			
[s] Observation end time (MET)	267982201.184000	267982441.56359			
Observation end date	2006-06-29T15:28:56	2006-06-29T15:34:01			
Read mode	TIMED	TIMED			

2.3 Aspect



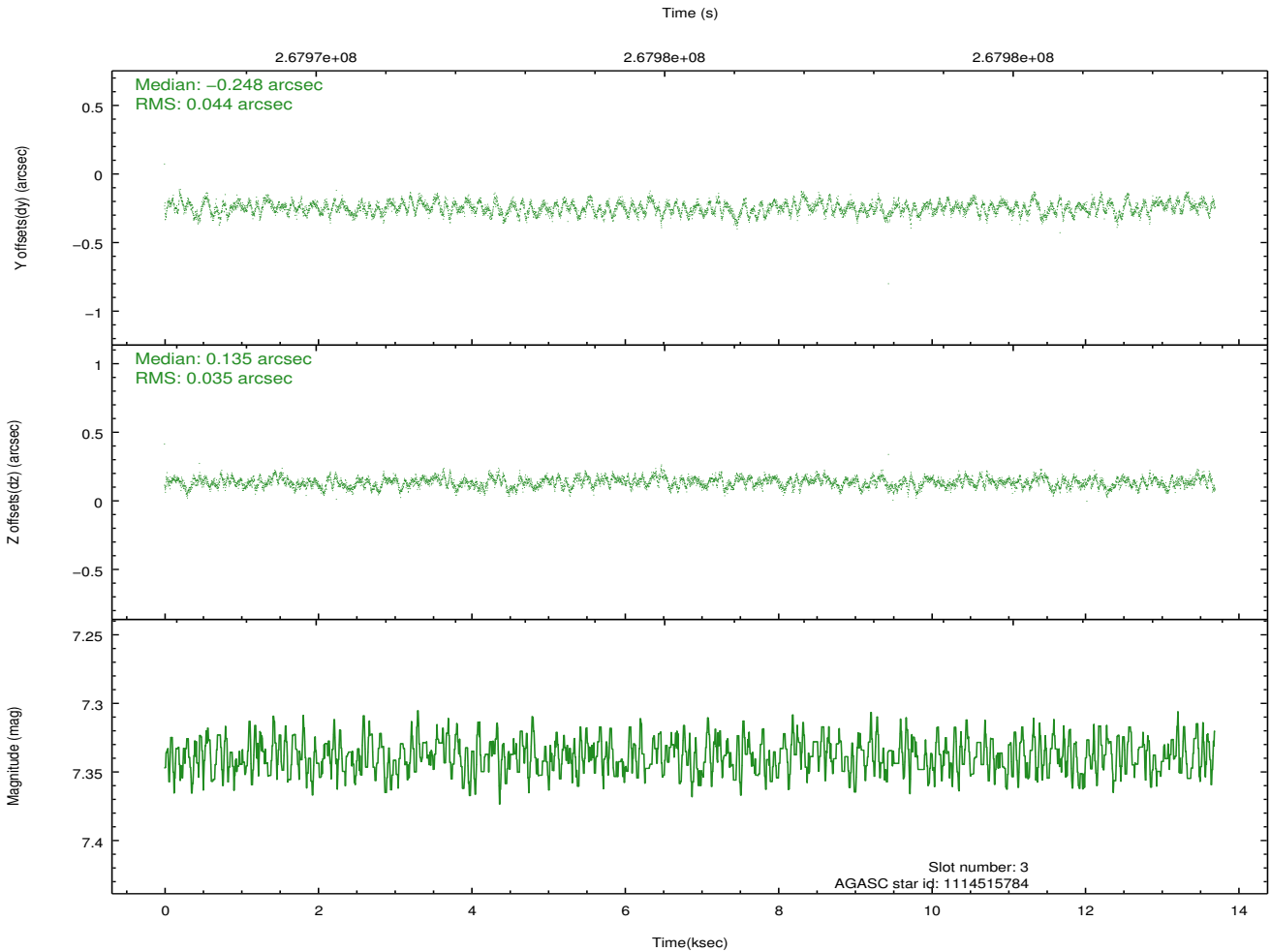
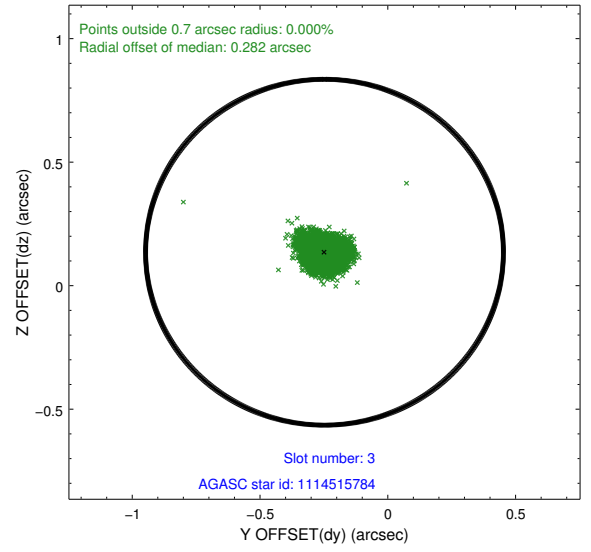
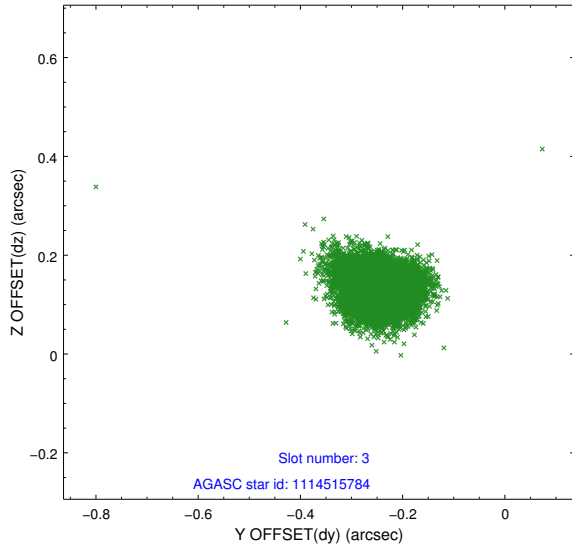


Slot Statistics

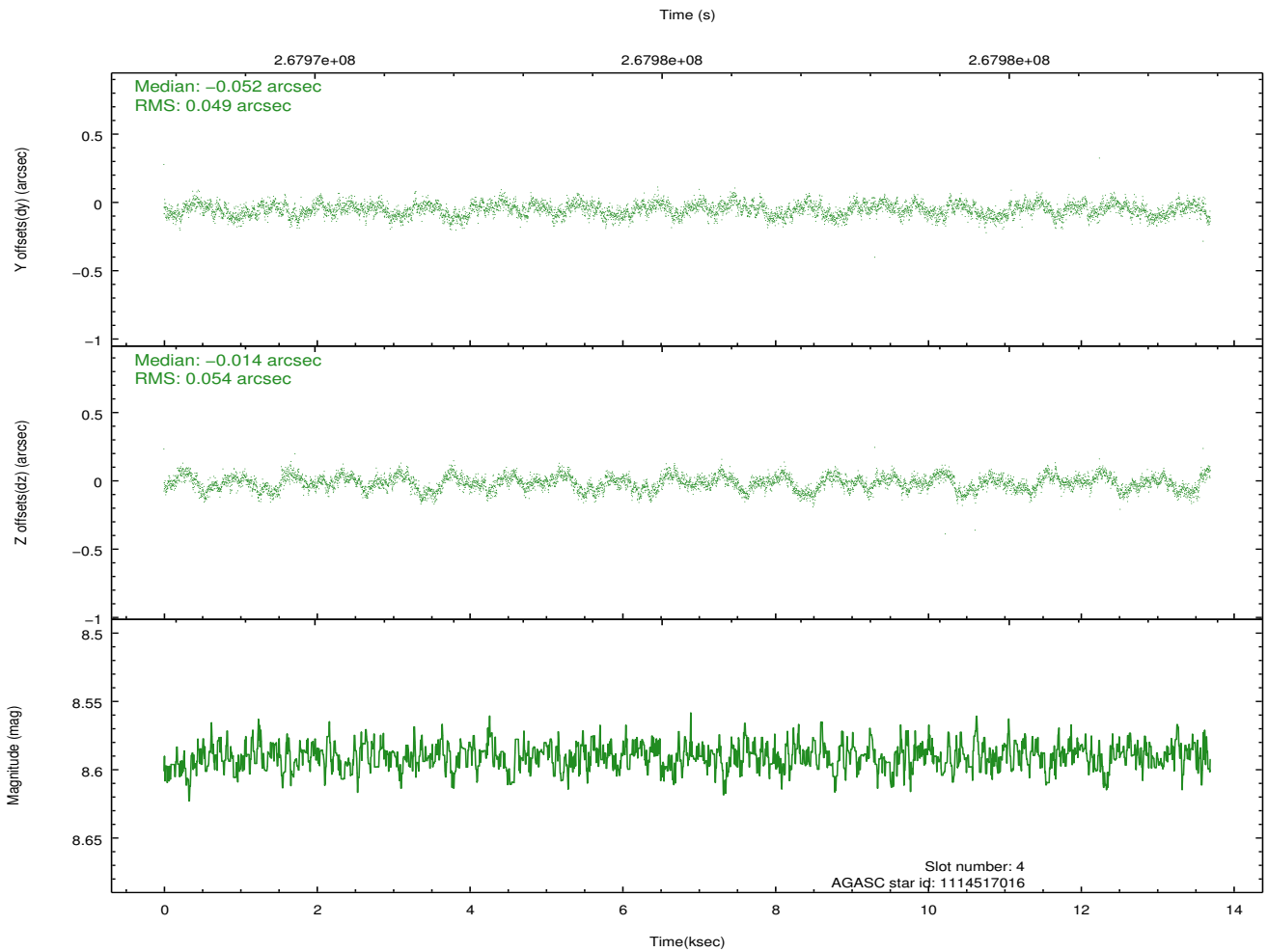
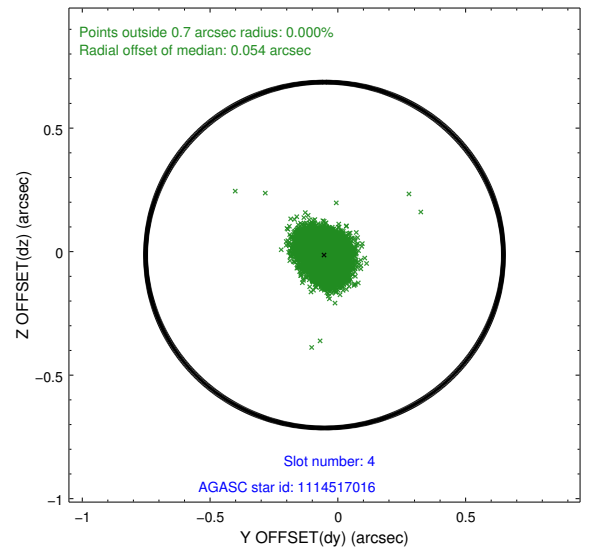
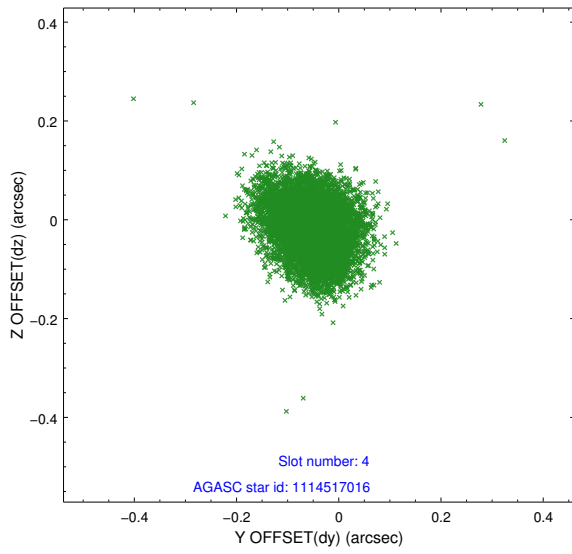
slot	status	id	mag	n_pts	med_dy	med_dz	dr1	dr2	ra	dec	mean_y	mean_z
0	FID	ACIS-I-1	7.24	3341	-0.075	-0.065	0.008	0.014	0.000000	0.000000	932.35	-835.16
1	FID	ACIS-I-4	7.18	3340	0.059	0.080	0.011	0.018	0.000000	0.000000	2152.74	1064.61
2	FID	ACIS-I-6	7.24	3341	-0.080	0.051	0.013	0.020	0.000000	0.000000	398.73	1707.18
3	GUIDE	1114515784	7.34	6678	-0.248	0.135	0.060	0.094	56.210588	-56.334536	2158.87	-1582.37
4	GUIDE	1114517016	8.59	6680	-0.052	-0.014	0.078	0.122	56.015700	-56.621885	1827.61	-529.47
5	GUIDE	1114517240	7.92	6680	-0.050	0.091	0.062	0.101	57.034888	-56.464897	571.75	-2212.30
6	GUIDE	1114907616	7.72	6681	0.143	-0.300	0.059	0.094	56.932945	-57.630172	-1810.76	1245.66
7	GUIDE	1114512720	7.48	6681	0.207	0.097	0.054	0.090	57.514099	-57.353811	-2108.11	-225.14

2.4 Star Slots

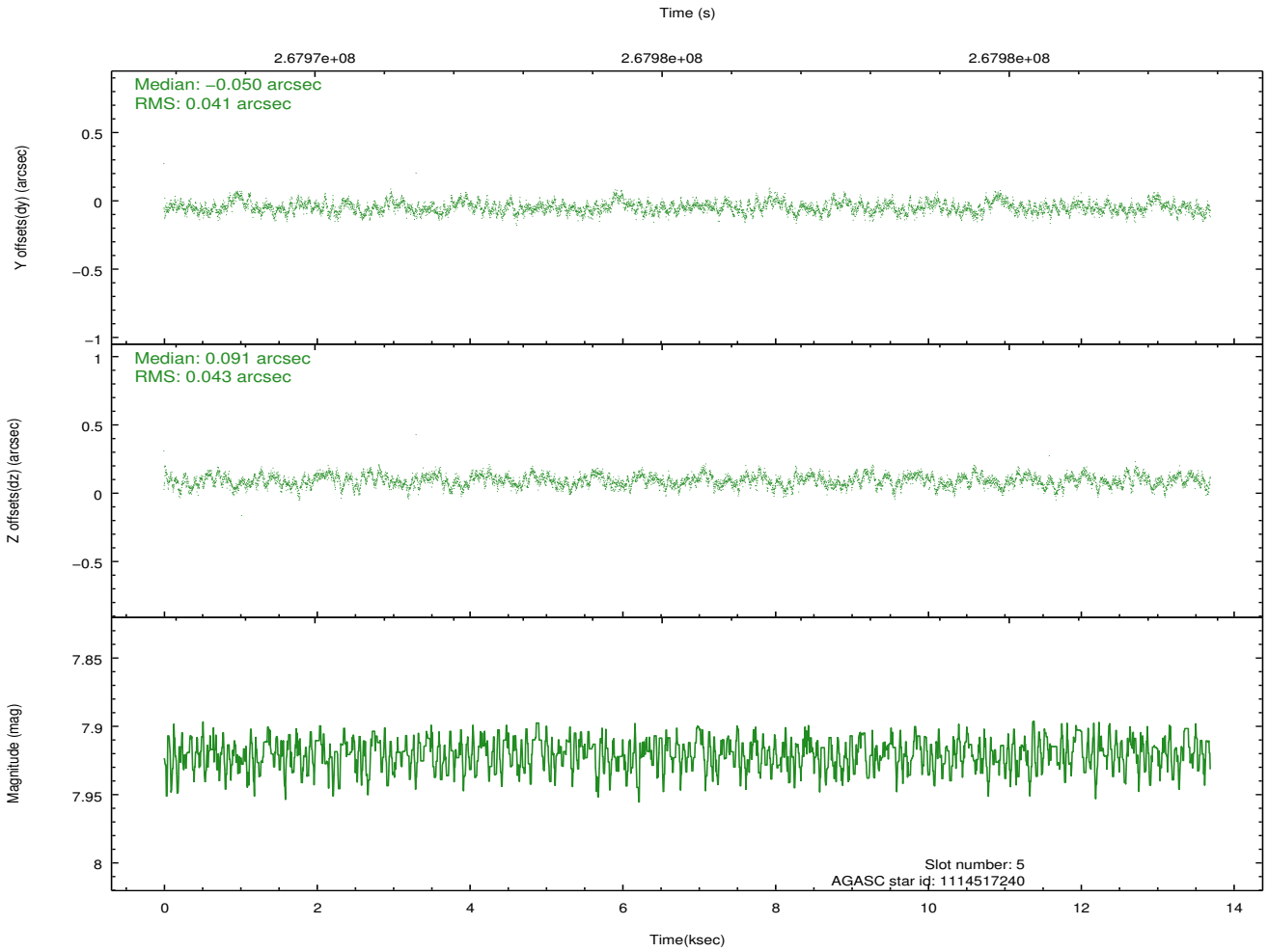
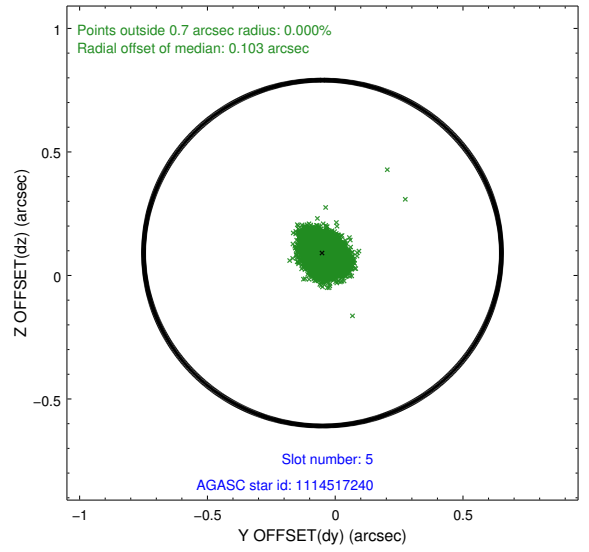
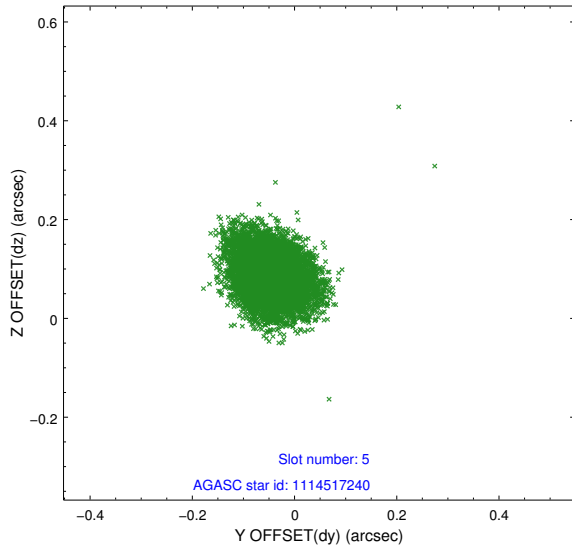
2.4.1 Slot 3



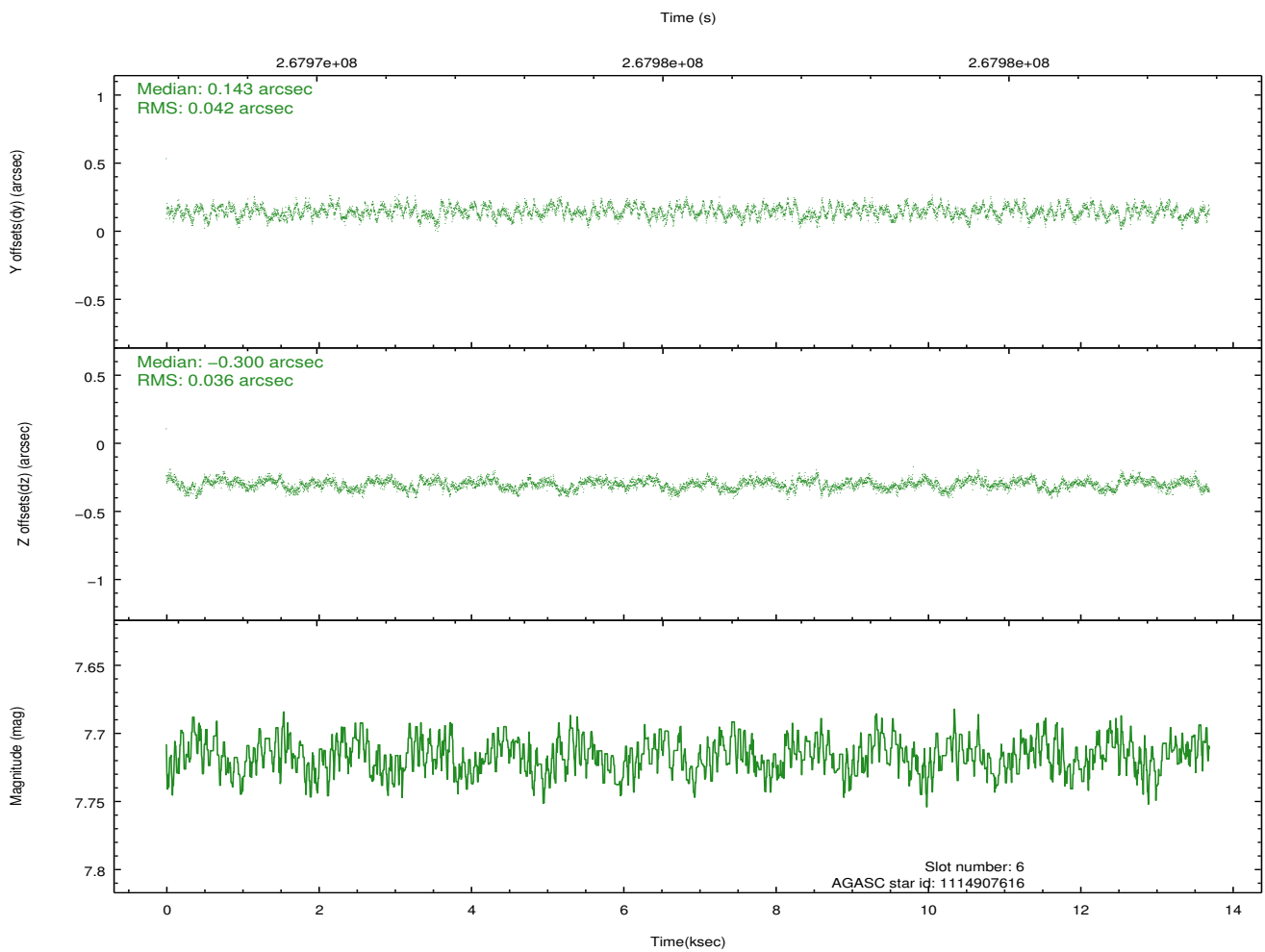
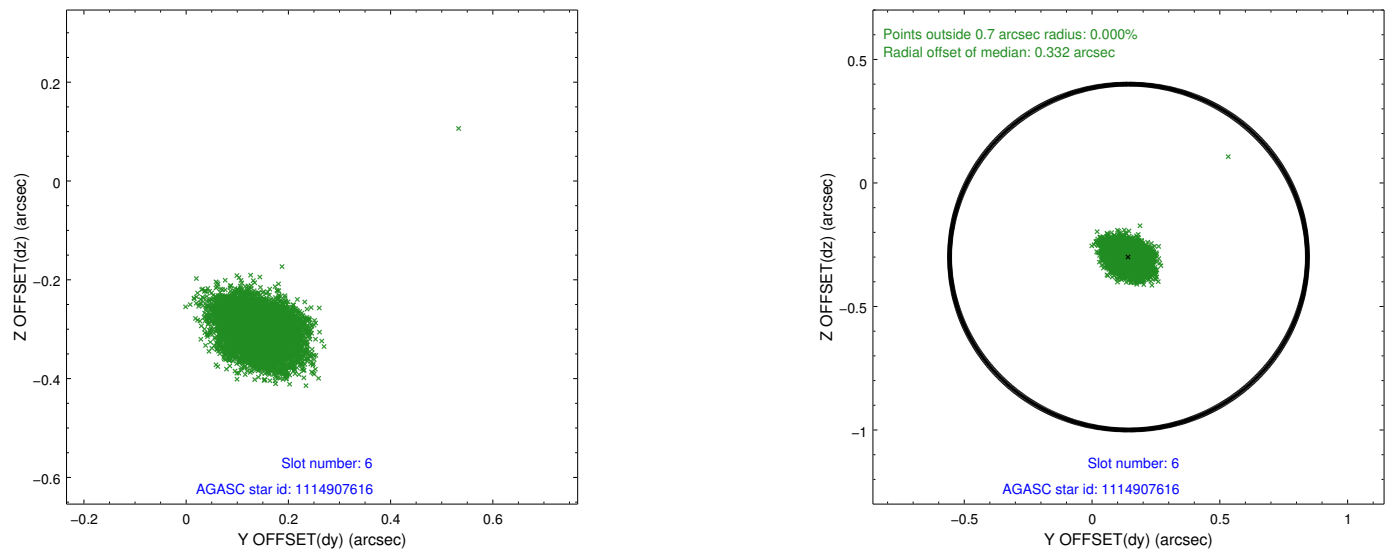
2.4.2 Slot 4



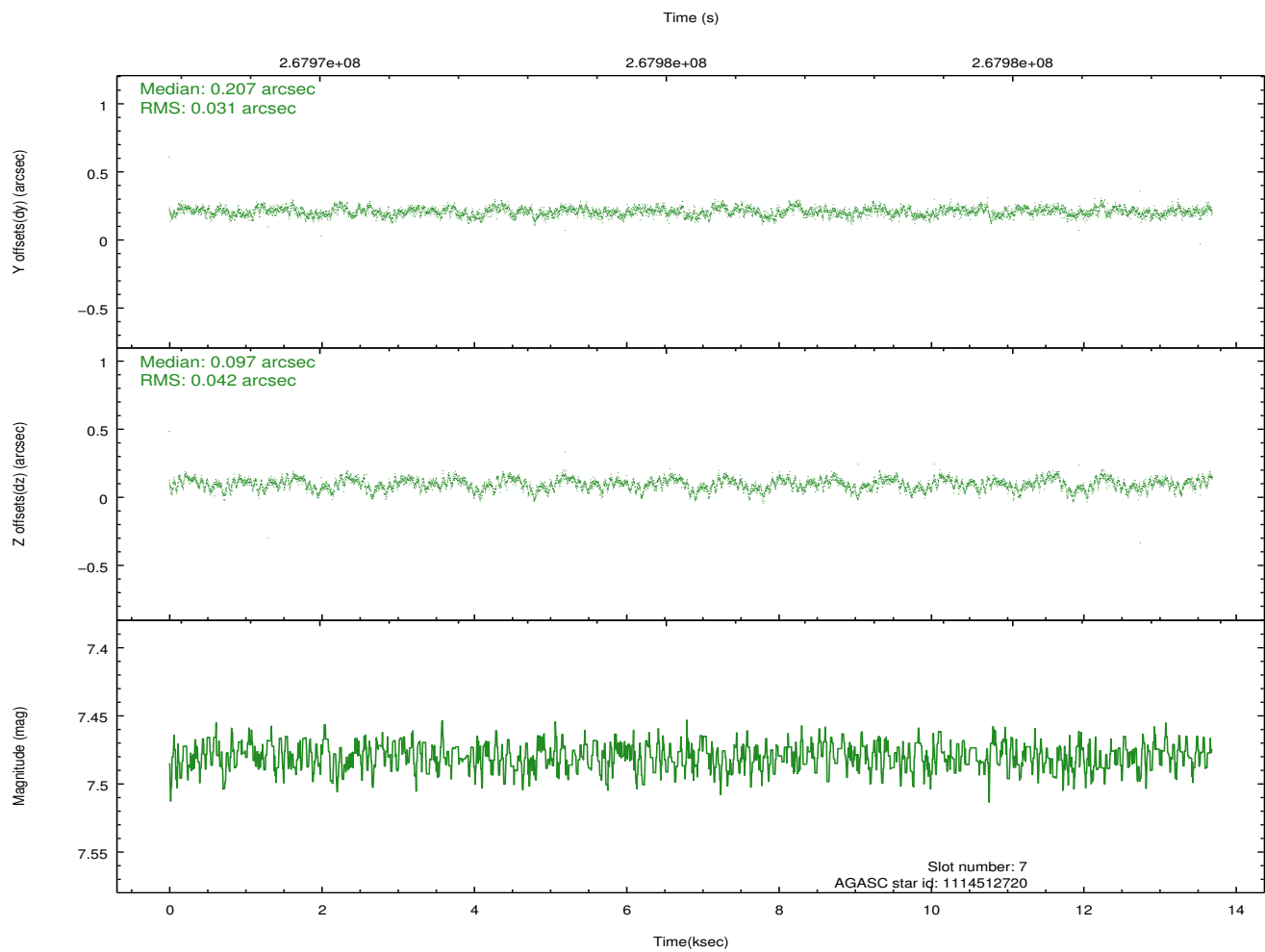
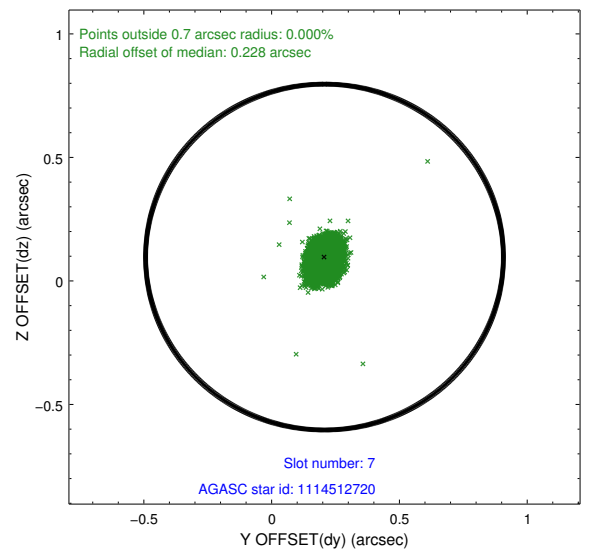
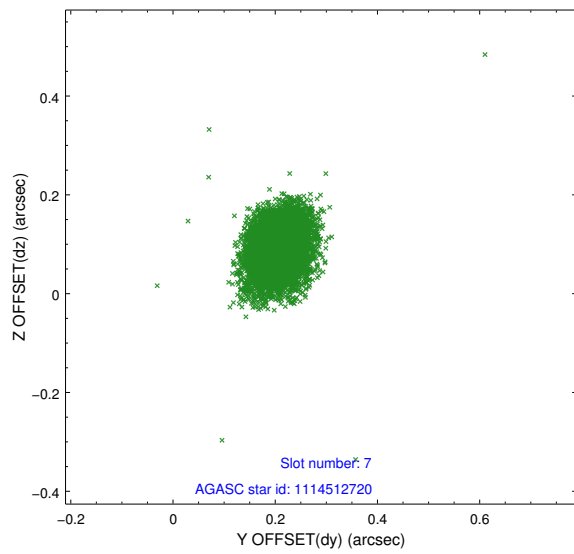
2.4.3 Slot 5



2.4.4 Slot 6

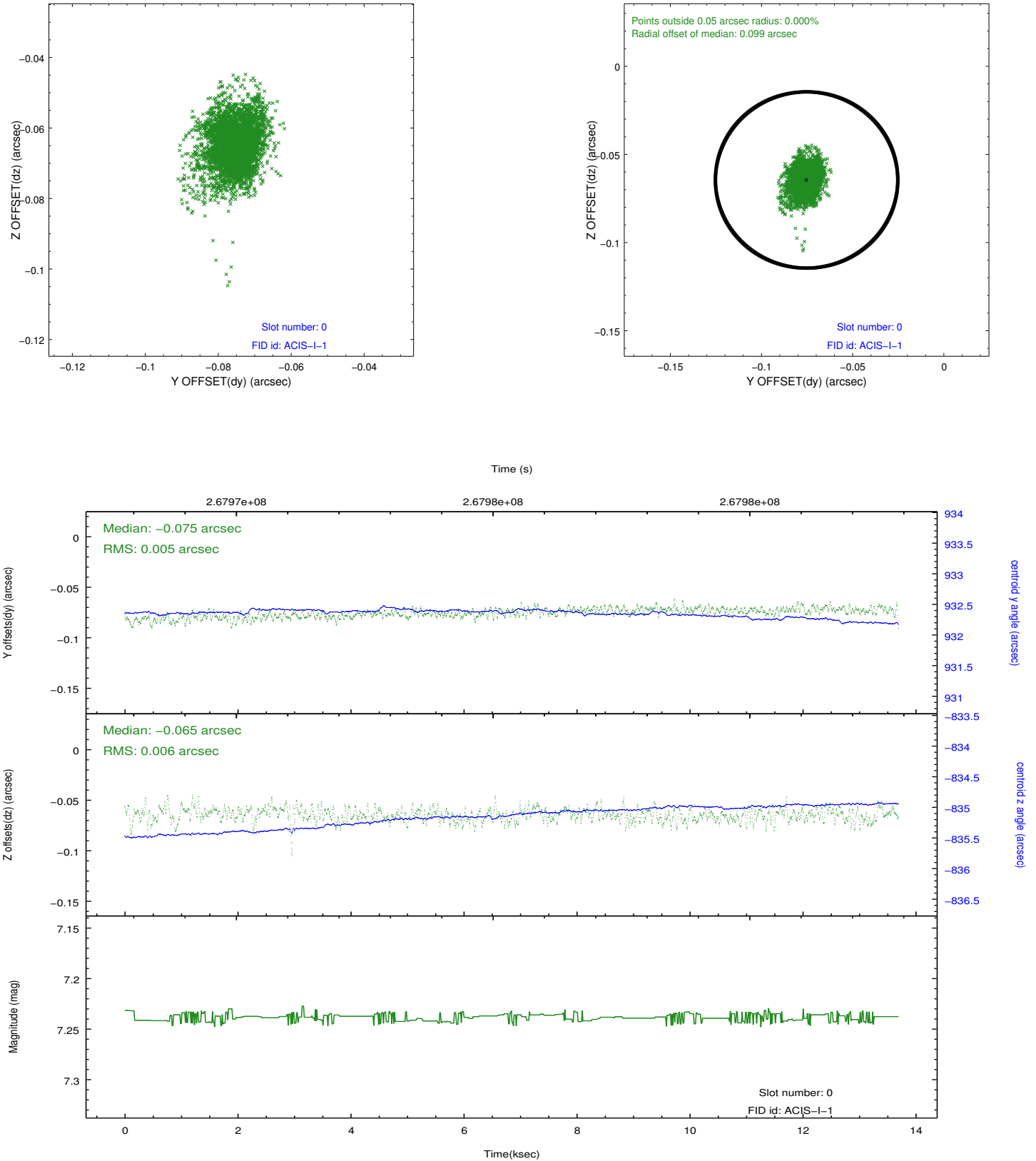


2.4.5 Slot 7

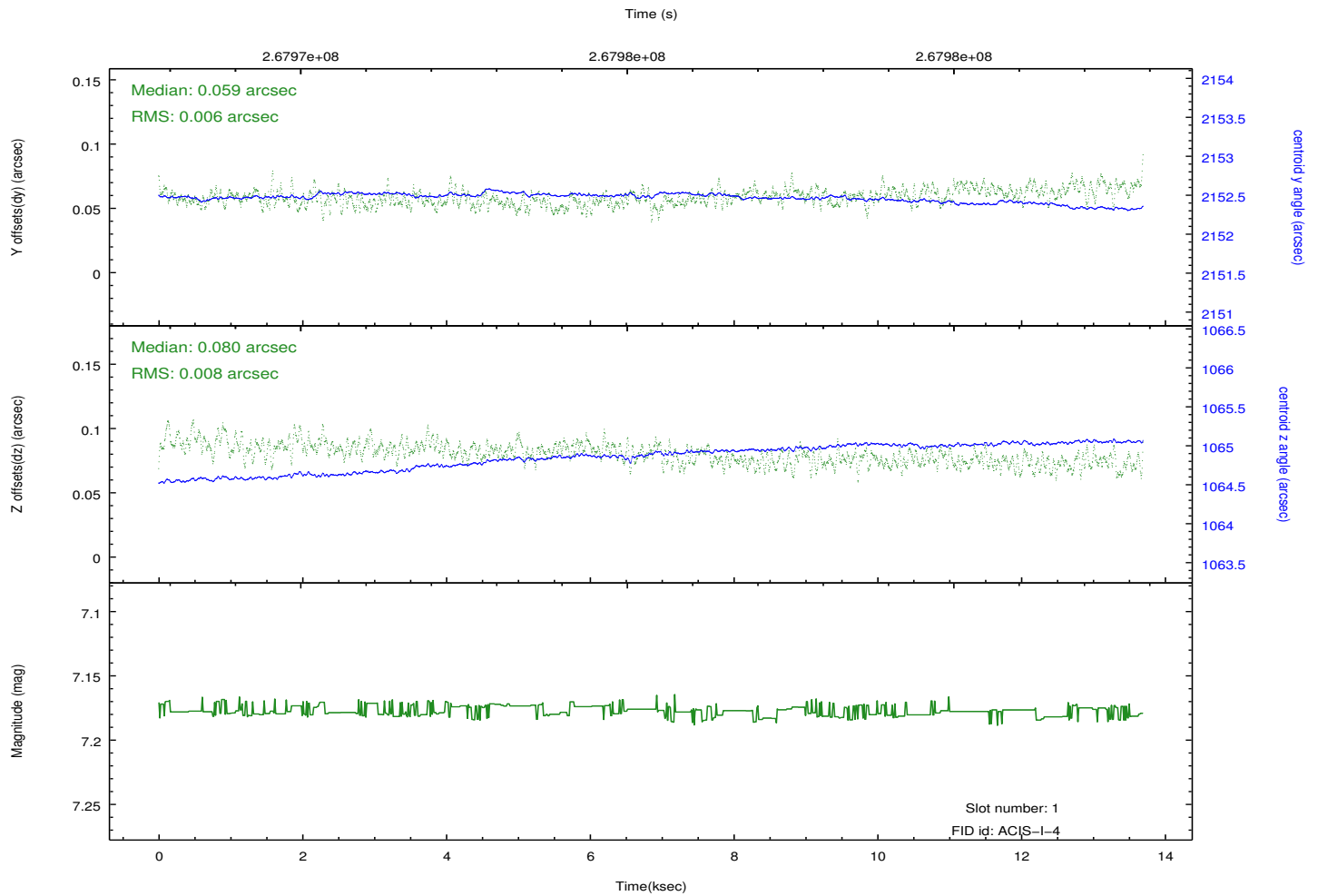
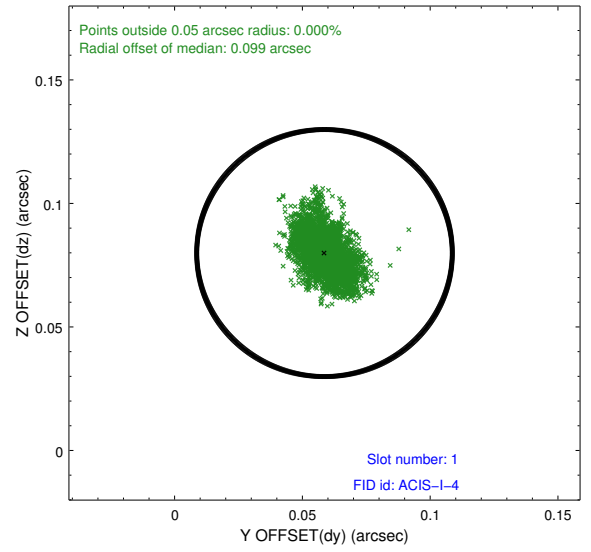
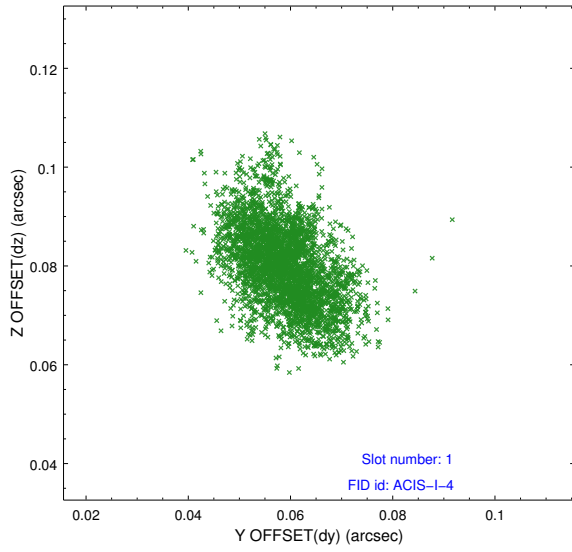


2.5 FID Slots

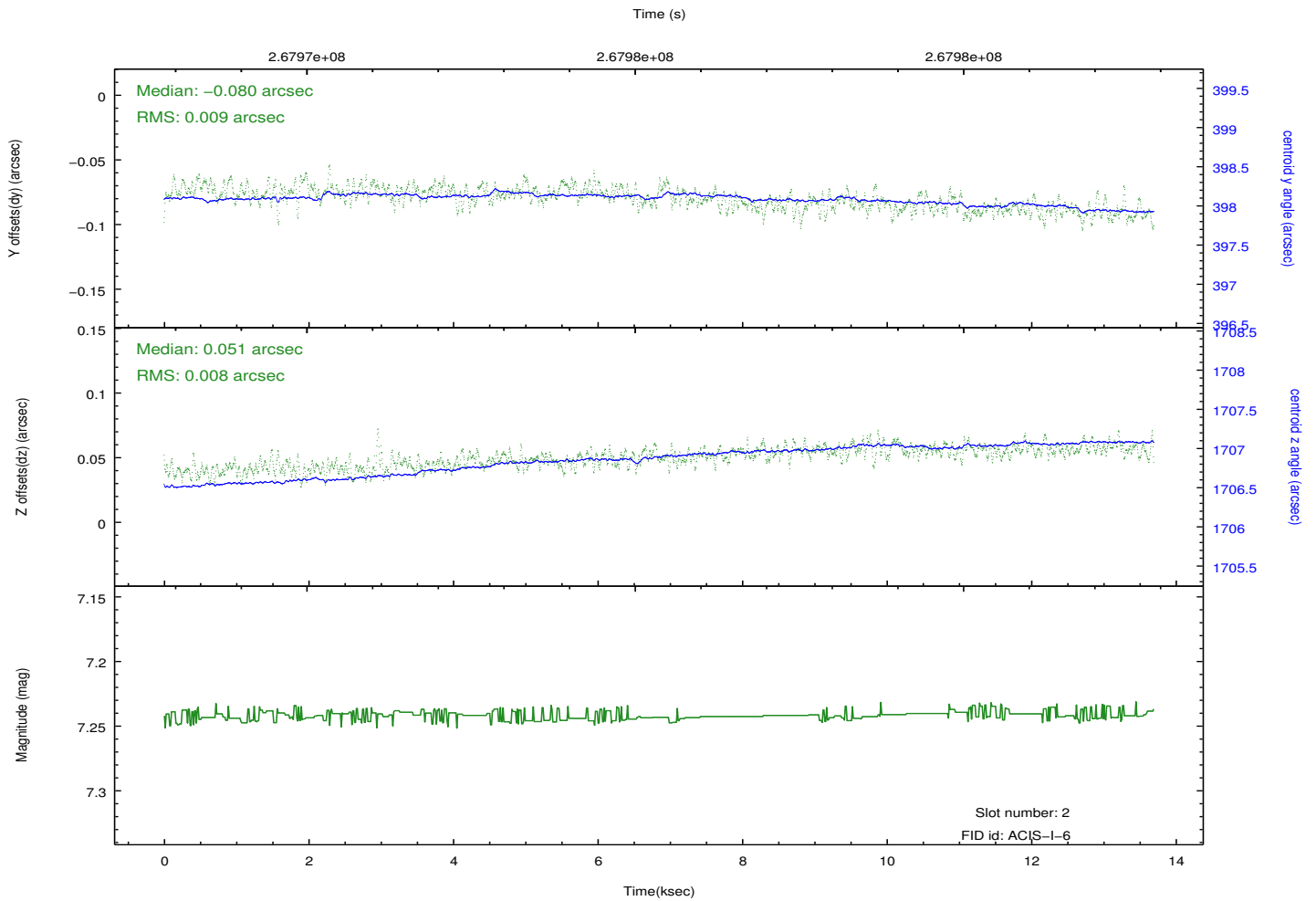
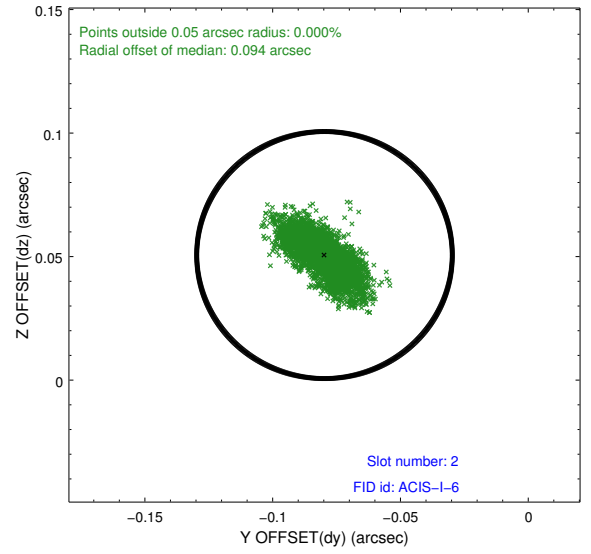
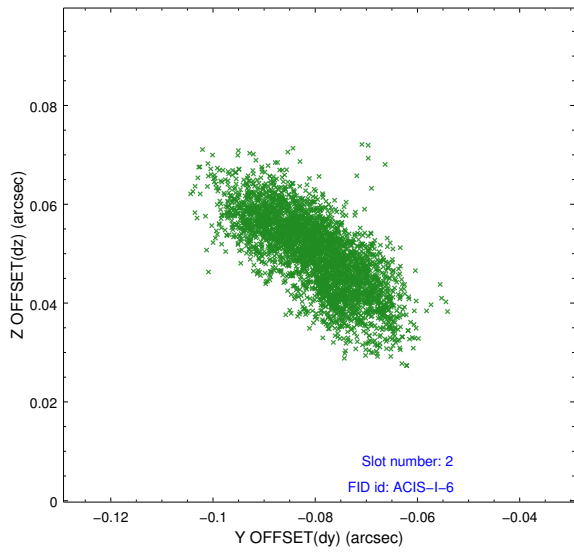
2.5.1 Slot 0



2.5.2 Slot 1



2.5.3 Slot 2



A Summary

A.1 Status

V&V Scientist	Jen Lauer
V&V Date (YYYY-MM-DD)	2012.04.05
V&V Edition	1
V&V Disposition and Status	OK
V&V Charge Time	13.6895999

A.2 Comments

An increase in the count rate occurs about 10 ksec into the observation. The increase is approximately a factor of 2, lasts for about 1 ksec, and appears to be due to the radiation environment at that time.