

V&V Reference Report

L2 ASCDS Version : 8.4.3.1

Observation 6975 - L2 Version 2
Chandra X-Ray Center

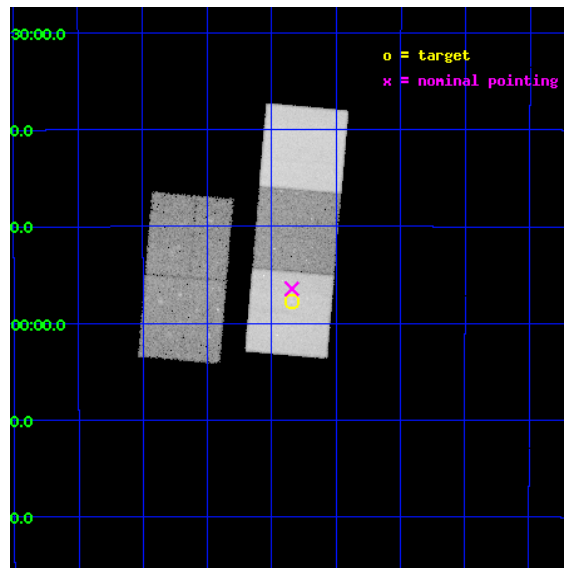
L2 Processing Date : Apr 5 2012

Contents

1	Front	2
2	OBI	3
2.1	OBI	3
2.1.1	Images	3
2.1.2	Bias	3
2.1.3	Parameters	4
2.1.4	Events	4
2.2	Compared Parameters	5
2.3	Aspect	6
2.4	Star Slots	9
2.4.1	Slot 3	9
2.4.2	Slot 4	10
2.4.3	Slot 5	11
2.4.4	Slot 6	12
2.4.5	Slot 7	13
2.5	FID Slots	14
2.5.1	Slot 0	14
2.5.2	Slot 1	15
2.5.3	Slot 2	16
A	Summary	17
A.1	Status	17
A.2	Comments	17

1 Front

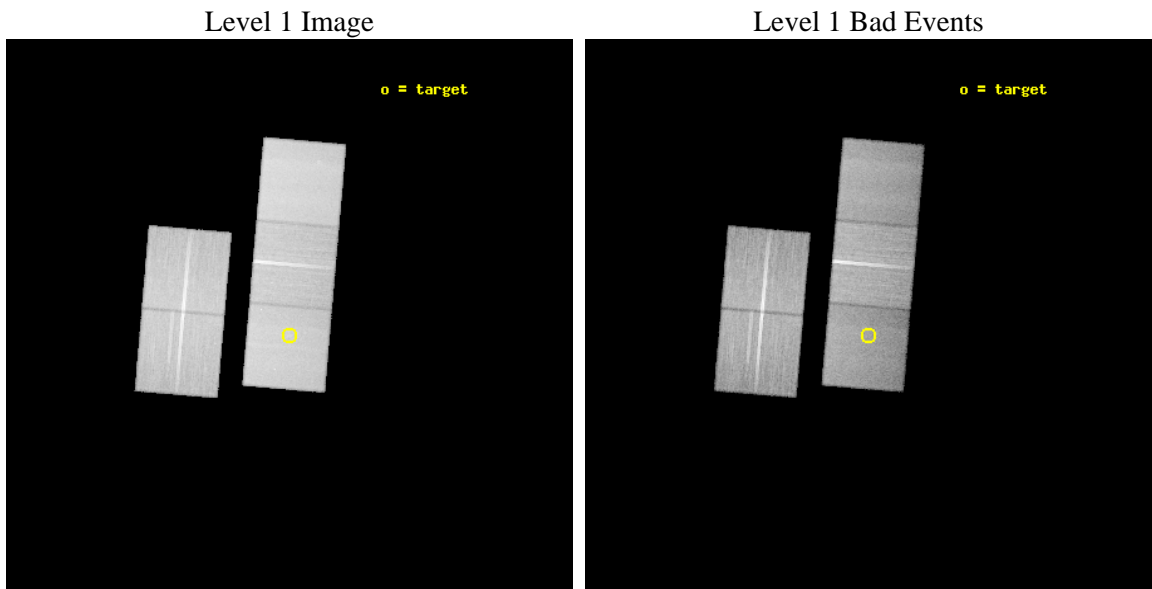
seq_num	800608	Sequence number
obs_id	6975	Observation id
title	MEASURING THE PHYSICAL PROPERTIES OF THE MOST DISTANT X-RAY MASSIVE GALAXY CLUSTER AT $z=1.4$	Proposal title
observer	Dr. Christopher Mullis	Principal investigator
object	XMMU J2235.3-2557	Source name
dtcycle	0	
cycle	P	events from which exps? Prim/Second/Both
ra_targ	338.835833	Observer's specified target RA [deg]
dec_targ	-25.961667	Observer's specified target Dec [deg]
ra_nom	338.83575181378	Nominal RA [deg]
dec_nom	-25.940902402177	Nominal Dec [deg]
roll_nom	94.956594457368	Nominal Roll [deg]
revision	2	Processing version of data
ontime	45036.252005517	Sum of GTIs [s]
livetime	44447.820217859	Livetime [s]
ontime2	45023.523884177	Sum of GTIs [s]
ontime3	45026.705904603	Sum of GTIs [s]
ontime5	45036.210965514	Sum of GTIs [s]
ontime6	45020.46493423	Sum of GTIs [s]
ontime7	45036.252005517	Sum of GTIs [s]
l2events	431348	Number of level 2 events



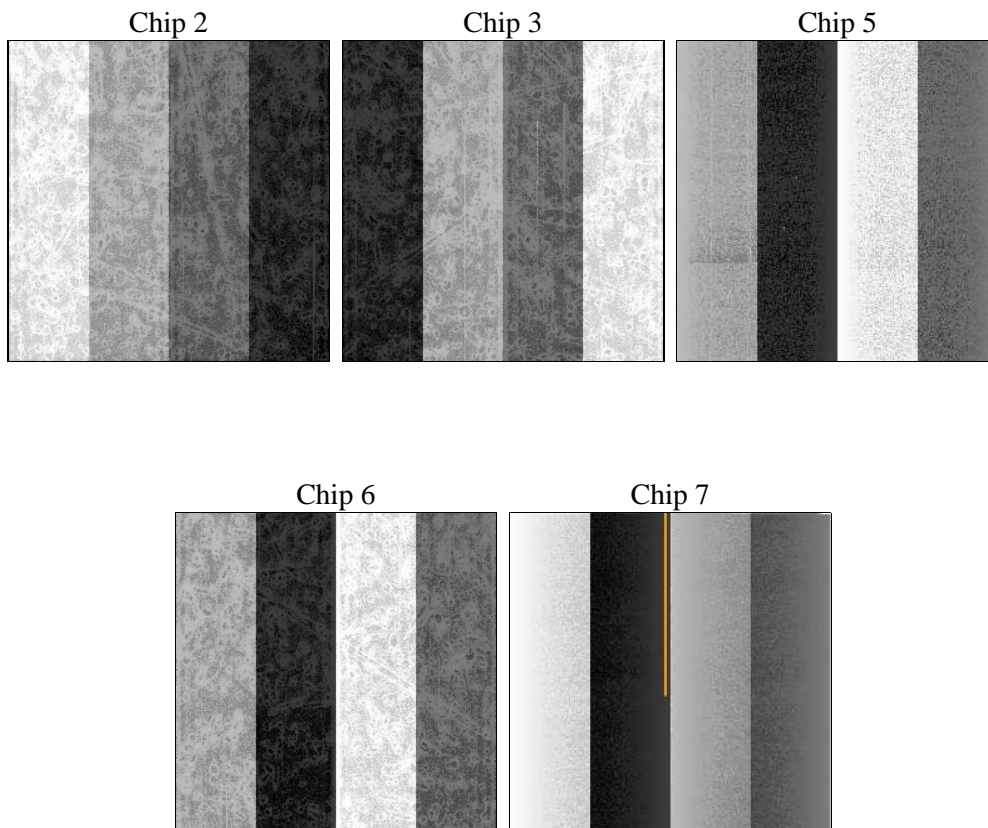
2 OBI

2.1 OBI

2.1.1 Images



2.1.2 Bias



2.1.3 Parameters

obi_num	0	Obi number	sched_exp_time	45000.000000	[s] Scheduled observation exposure time
ascdsver	8.4.3.1	Processing system revision	ontime	45036.252005517	Sum of GTIs [s]
caldbver	4.4.9	 	ontime2	45023.523884177	Sum of GTIs [s]
date	2012-04-05T11:47:18	Date and time of file creation	ontime3	45026.705904603	Sum of GTIs [s]
revision	2	Processing version of data	ontime5	45036.210965514	Sum of GTIs [s]
			ontime6	45020.46493423	Sum of GTIs [s]
			ontime7	45036.252005517	Sum of GTIs [s]
			l1events	1719519	Number of level 1 events

2.1.4 Events

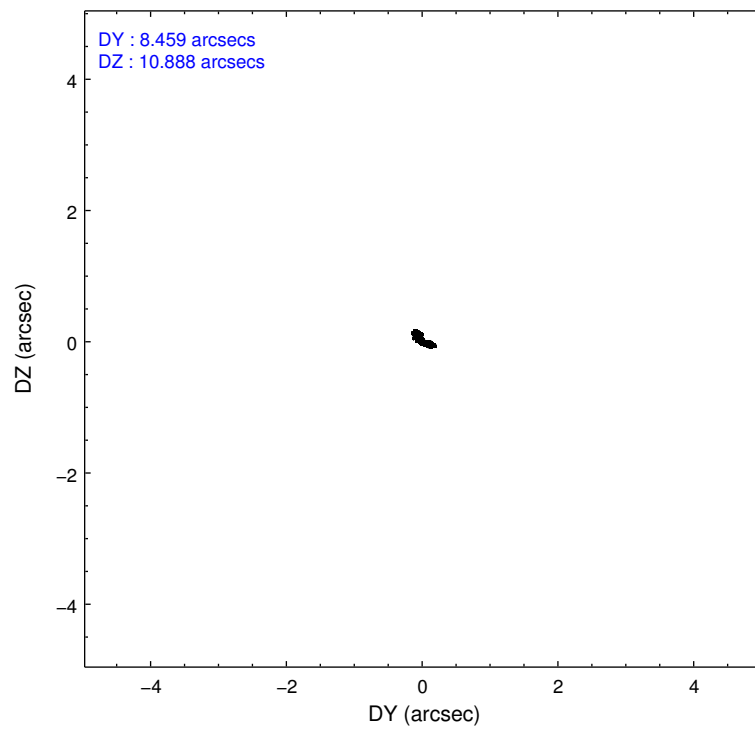
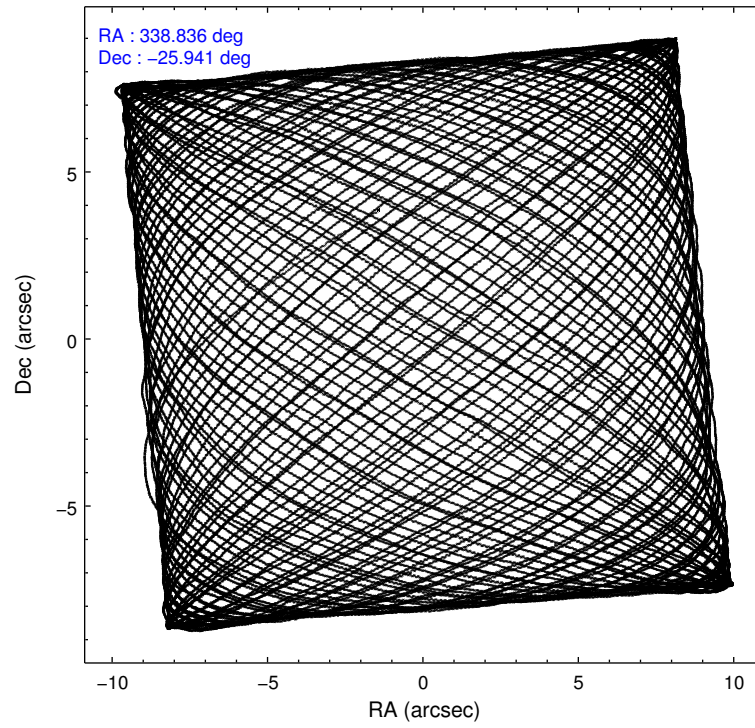
	ccd 2	ccd 3	ccd 5	ccd 6	ccd 7
level 1 events	324135	308001	416454	321487	349442
rejected events	294298	278245	214419	288826	190182
rejected %	90%	90%	51%	89%	54%

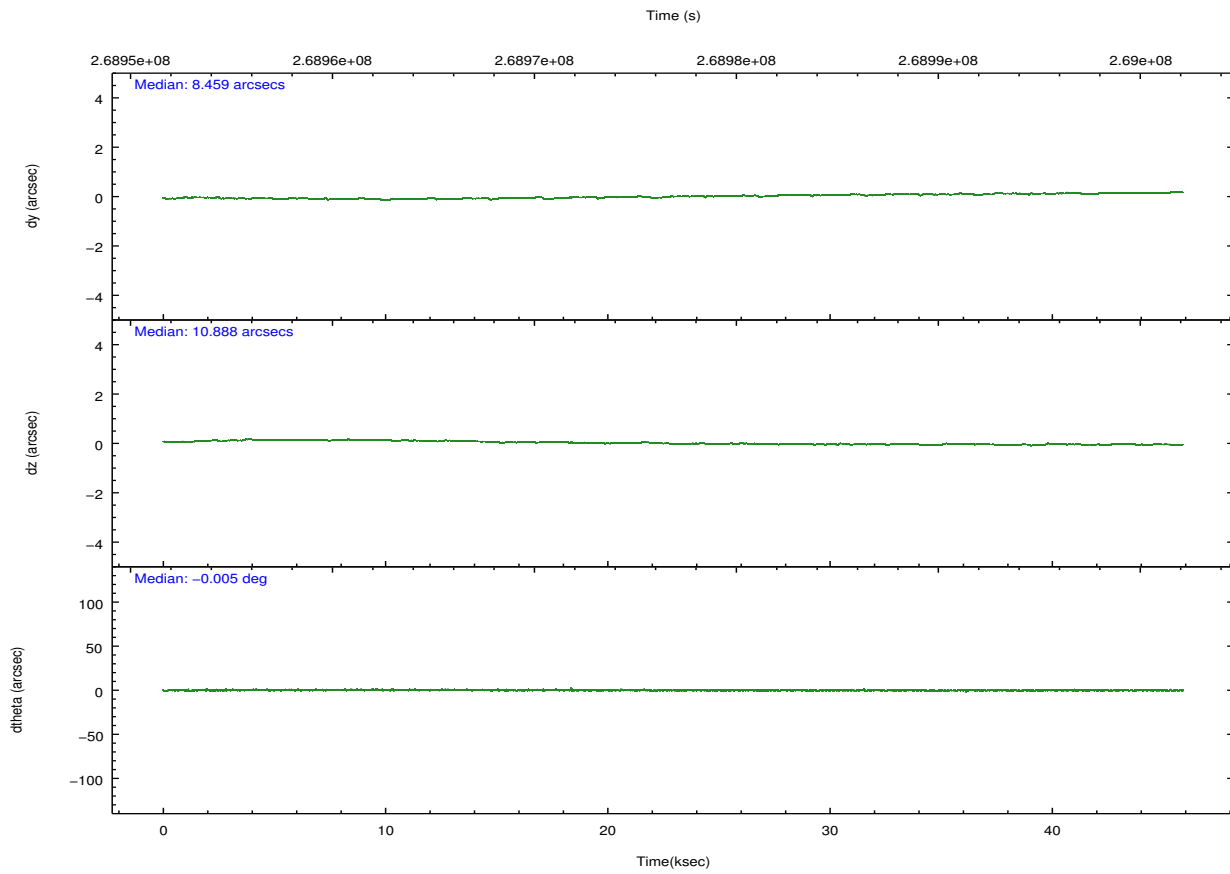
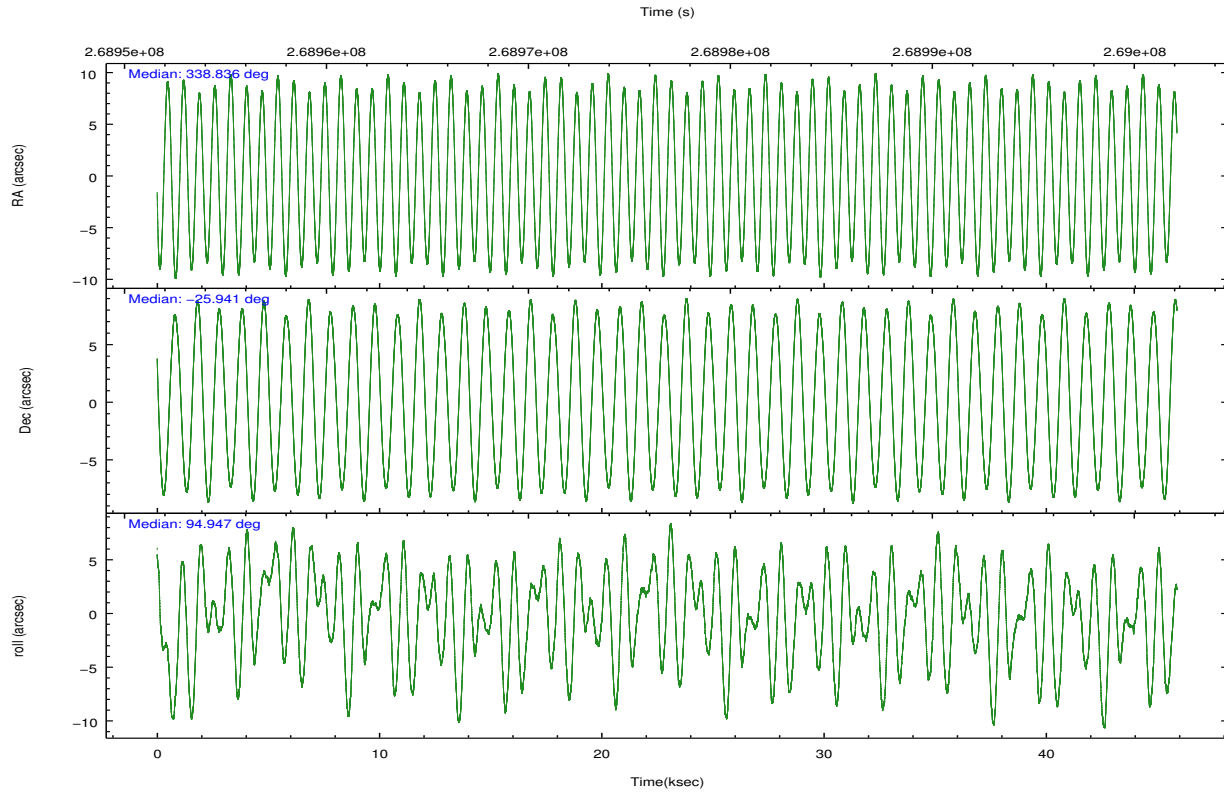
	ccd 2	ccd 3	ccd 5	ccd 6	ccd 7
grade 0 events	10864	10617	12571	11353	14535
	3%	3%	3%	3%	4%
grade 1 events	164	170	357	158	310
	0%	0%	0%	0%	0%
grade 2 events	6961	6256	60491	7142	32238
	2%	2%	14%	2%	9%
grade 3 events	3159	3462	9034	3566	14786
	0%	1%	2%	1%	4%
grade 4 events	3376	3439	8757	3565	14675
	1%	1%	2%	1%	4%
grade 5 events	9820	12252	34256	12496	36678
	3%	3%	8%	3%	10%
grade 6 events	5481	5983	111205	7041	83059
	1%	1%	26%	2%	23%
grade 7 events	284310	265822	179783	276166	153161
	87%	86%	43%	85%	43%

2.2 Compared Parameters

Parameter	Planned	Actual	Parameter	Planned	Actual
Instrument	ACIS	ACIS	Obspar format version number	7	7
Detector	ACIS-23567	ACIS-23567	Obspar file type	PREDICTED	ACTUAL
Grating	NONE	NONE	Obspar update status	NONE	UPDATED
Data mode	VFAINT	VFAINT	Number of optional ACIS chips dropped	0	0
Observation mode	POINTING	POINTING	On-chip summing requested	N	N
[deg] Pointing RA	338.853443	338.8357518137848	Subarray requested	NONE	NONE
[deg] Pointing Dec	-25.963008	-25.94090240217725	Alternating exposures requested	N	N
[deg] Pointing Roll	94.807710	94.9565944573676	[s] Primary exposure time	0.000000	3.1
[mm] SIM focus pos	-0.684267	-0.6828225247311905			
[mm] SIM defocus	0	0.001444936568705701			
[mm] SIM translation stage pos	-190.132523	-190.1400660498719			
[mm] SIM translation stage offset	0	0.00754346686406393			
[s] Observation start time (MET)	268954795.184000	268953517.38408			
Observation start date	2006-07-10T21:38:50	2006-07-10T21:18:37			
[s] Observation end time (MET)	268999795.184000	269000743.2363			
Observation end date	2006-07-11T10:08:50	2006-07-11T10:25:43			
Read mode	TIMED	TIMED			

2.3 Aspect



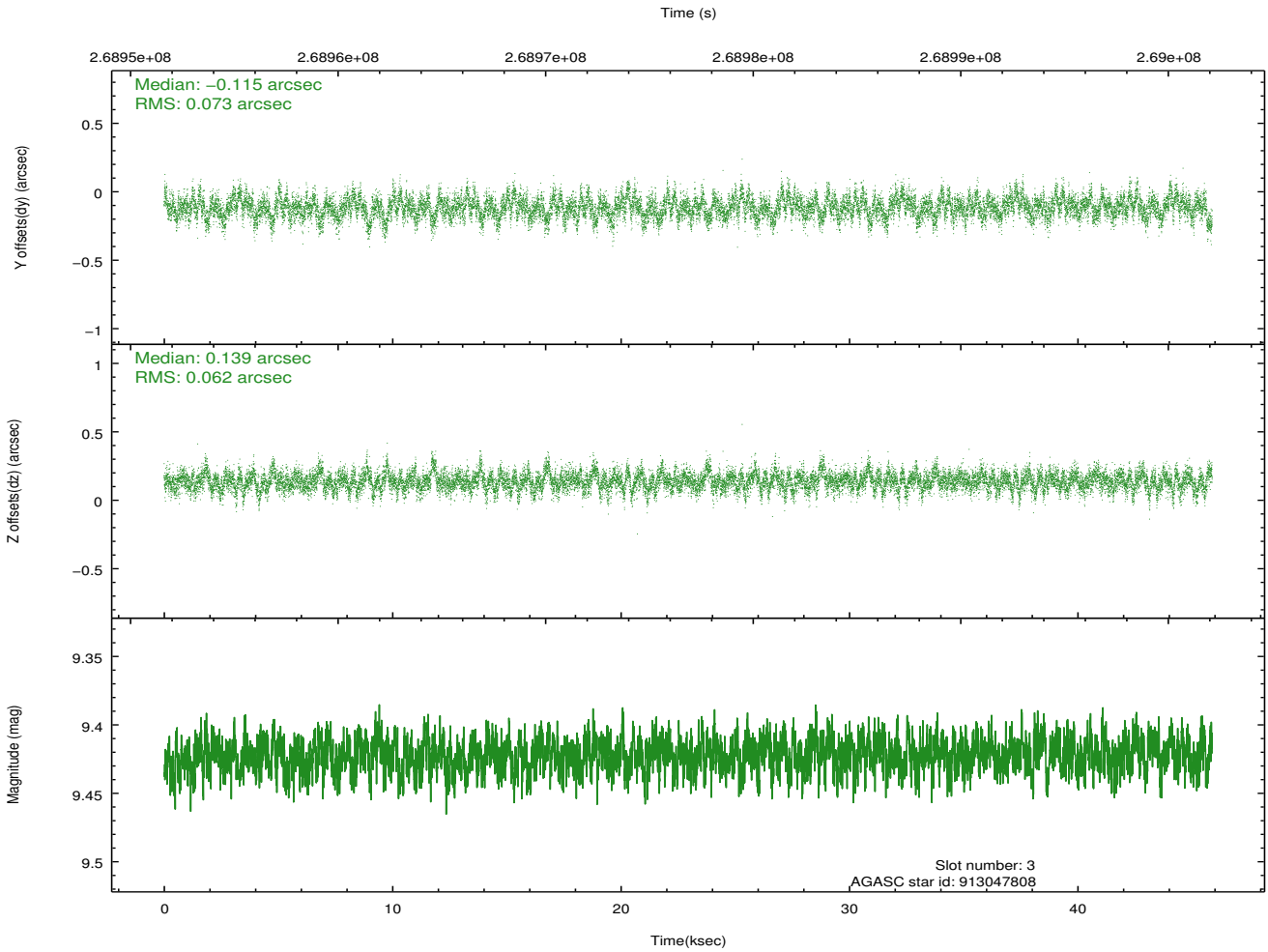
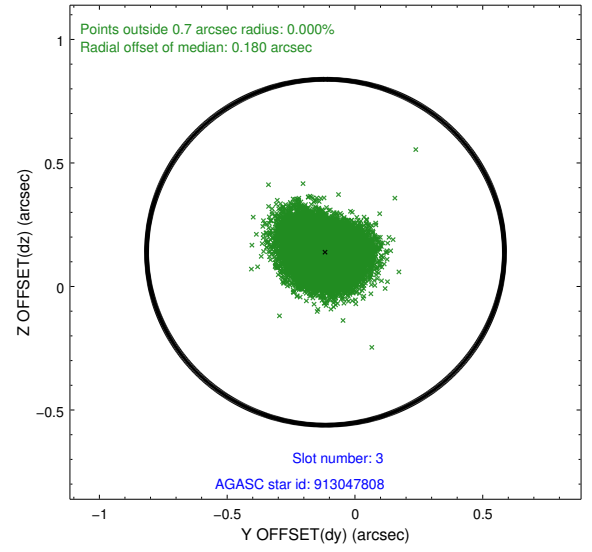
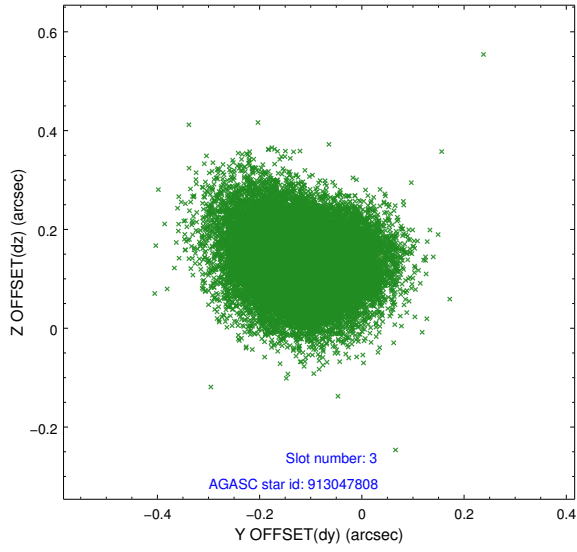


Slot Statistics

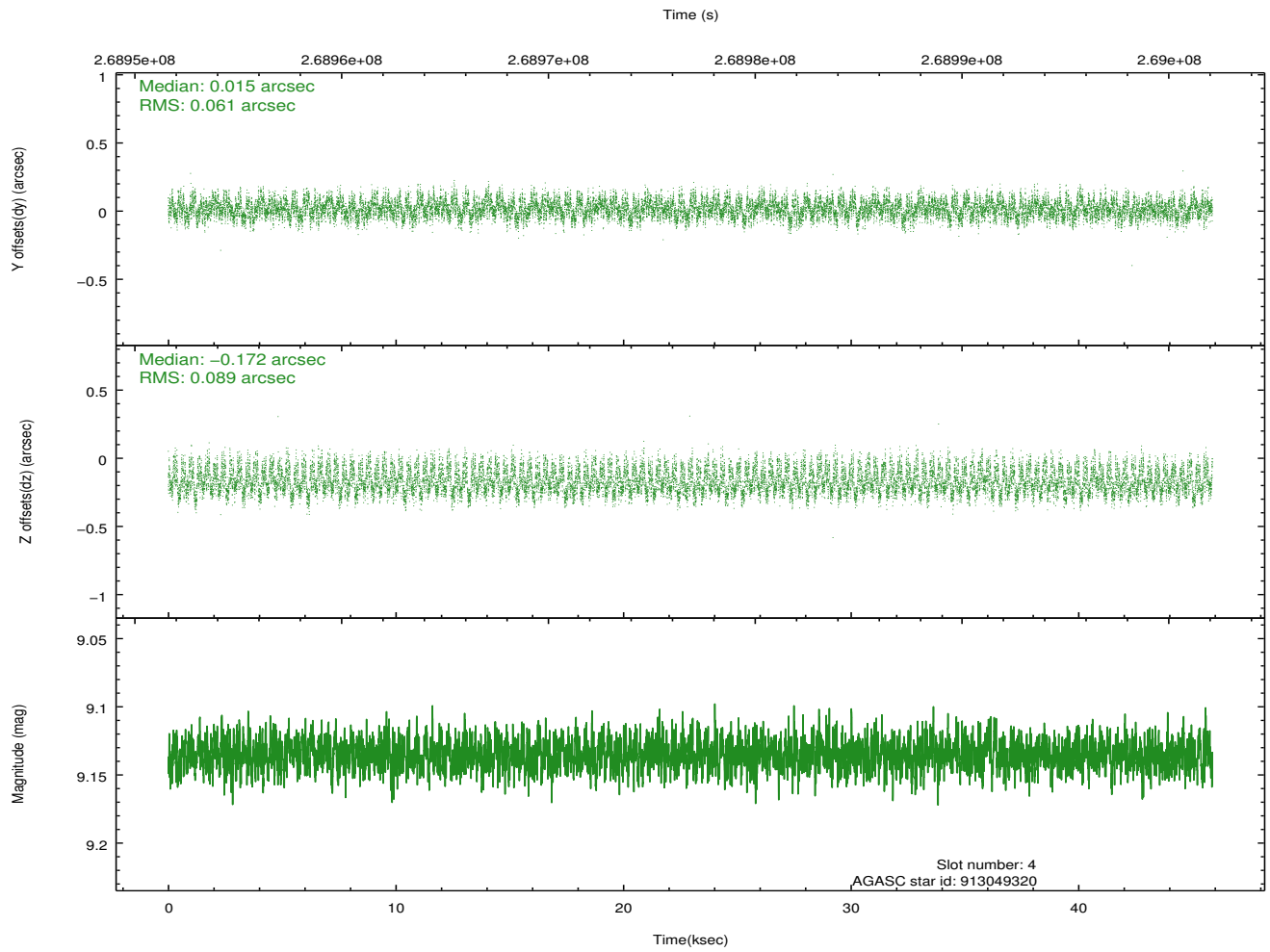
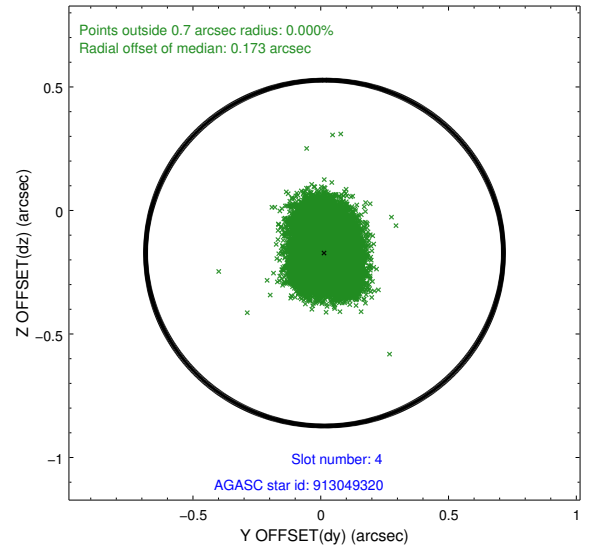
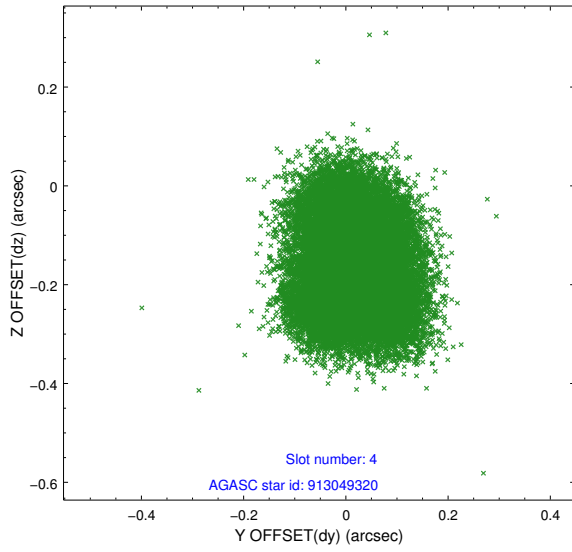
slot	status	id	mag	n_pts	med_dy	med_dz	dr1	dr2	ra	dec	mean_y	mean_z
0	FID	ACIS-S-2	7.11	11192	-0.039	-0.015	0.007	0.011	0.000000	0.000000	-761.26	-1732.21
1	FID	ACIS-S-4	7.21	11191	0.137	0.023	0.007	0.013	0.000000	0.000000	2152.16	176.37
2	FID	ACIS-S-5	7.23	11192	-0.129	0.001	0.007	0.013	0.000000	0.000000	-1814.24	169.94
3	GUIDE	913047808	9.42	22359	-0.115	0.139	0.101	0.168	338.934868	-25.449672	1819.37	-418.26
4	GUIDE	913049320	9.13	22364	0.015	-0.172	0.118	0.181	338.191374	-25.848811	583.80	2103.12
5	GUIDE	913050576	9.77	22361	-0.183	0.336	0.129	0.210	339.398805	-25.857774	226.17	-1791.67
6	GUIDE	913051032	9.01	22372	0.153	-0.273	0.088	0.147	338.178721	-26.464177	-1621.35	2317.91
7	GUIDE	913055744	9.71	22366	0.126	-0.028	0.110	0.185	339.034663	-26.334108	-1380.37	-470.84

2.4 Star Slots

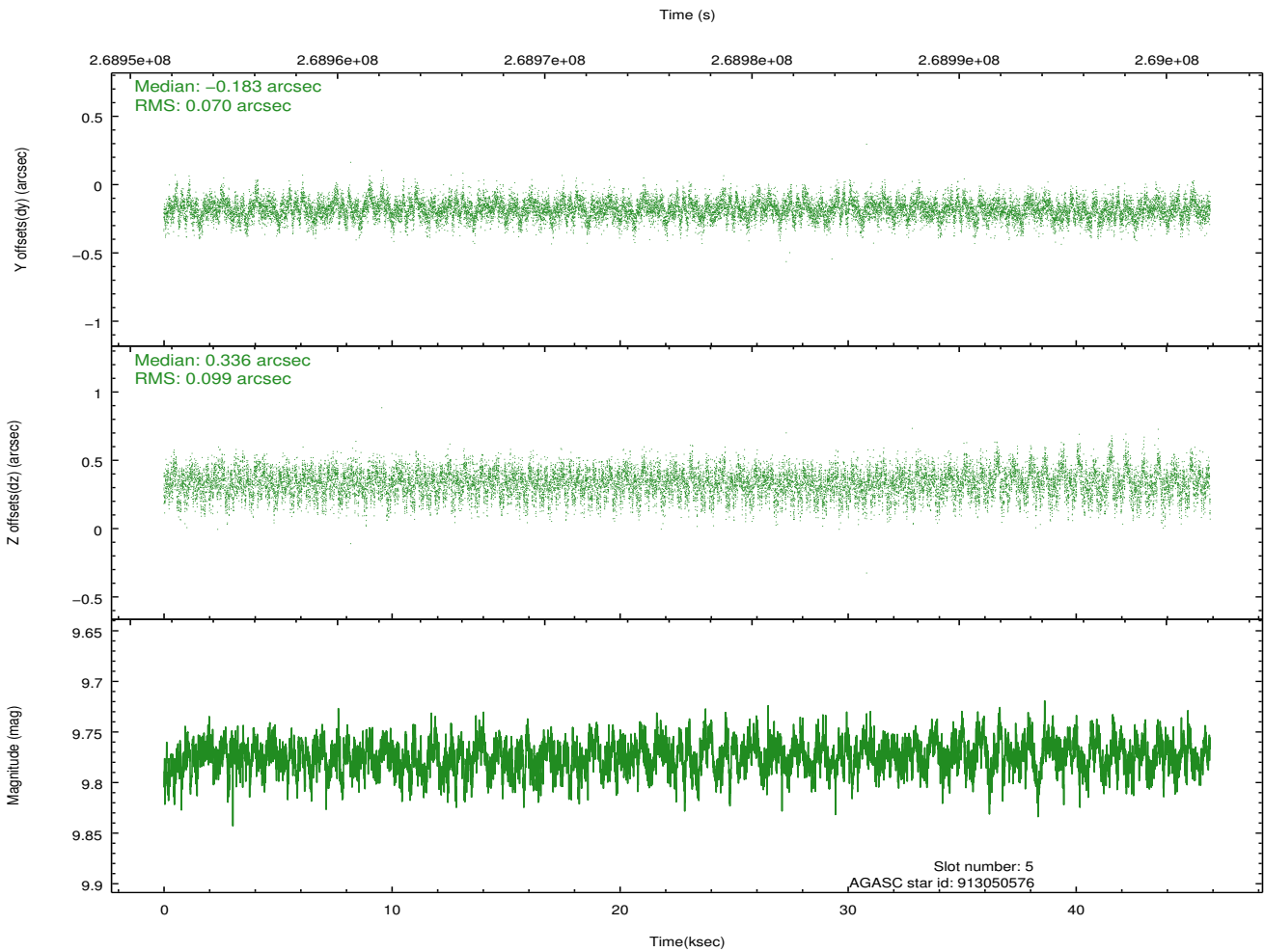
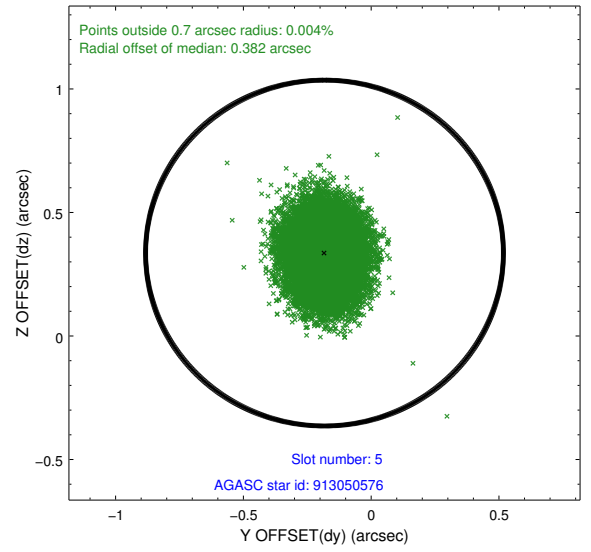
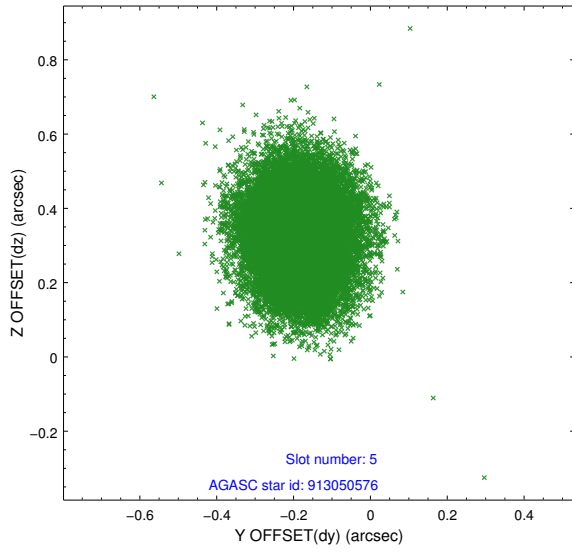
2.4.1 Slot 3



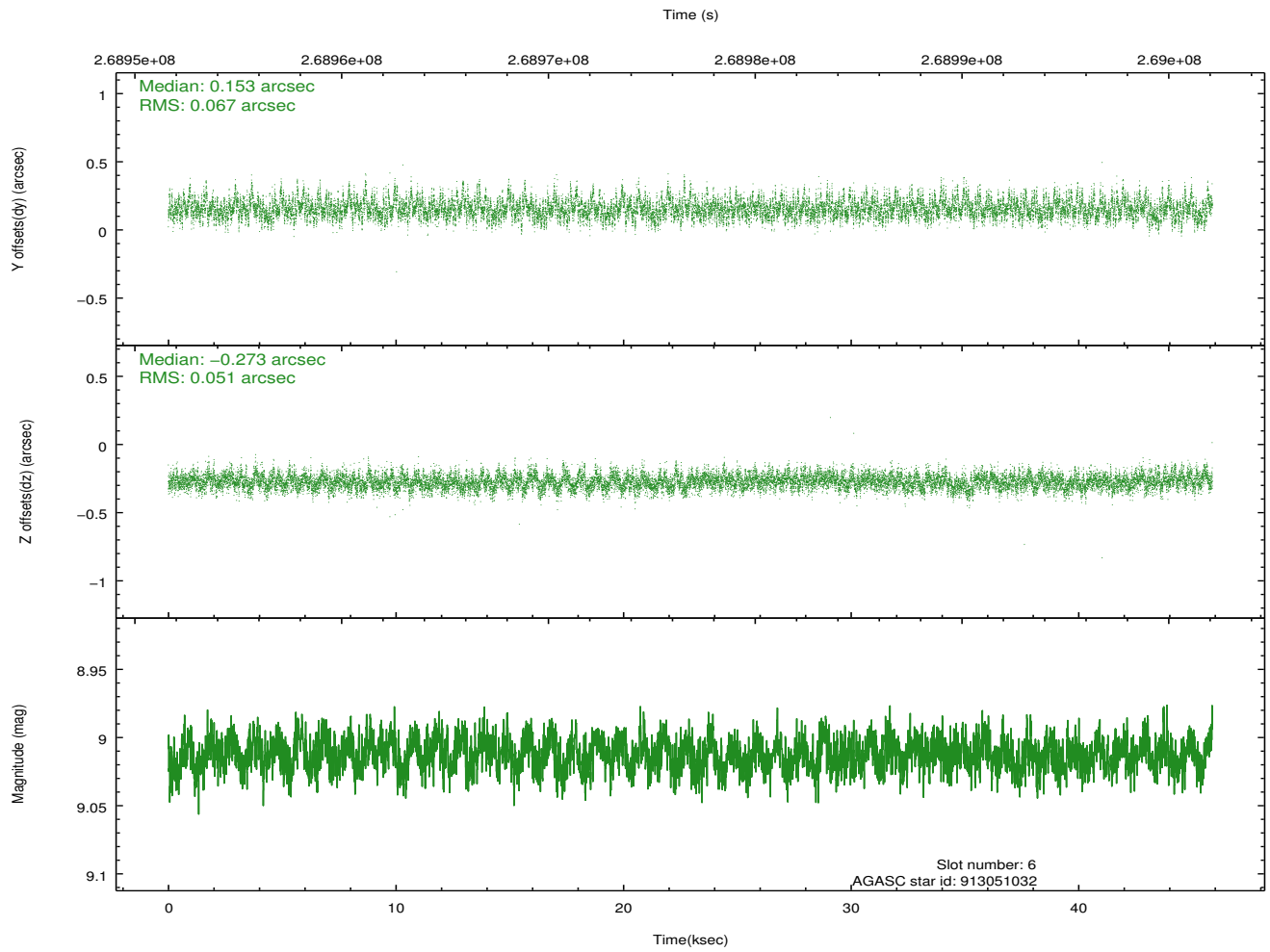
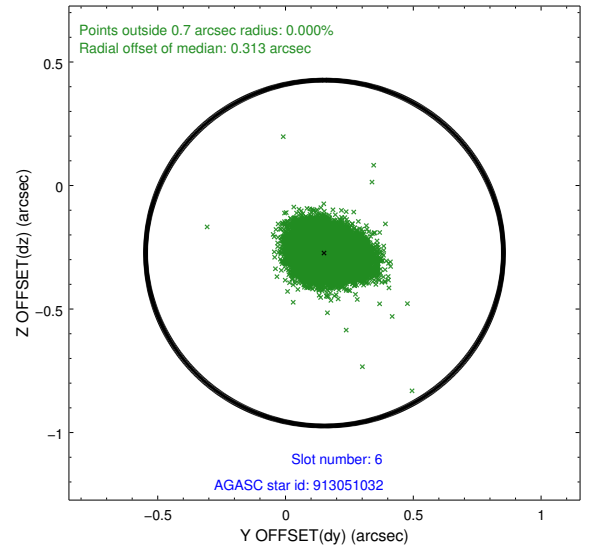
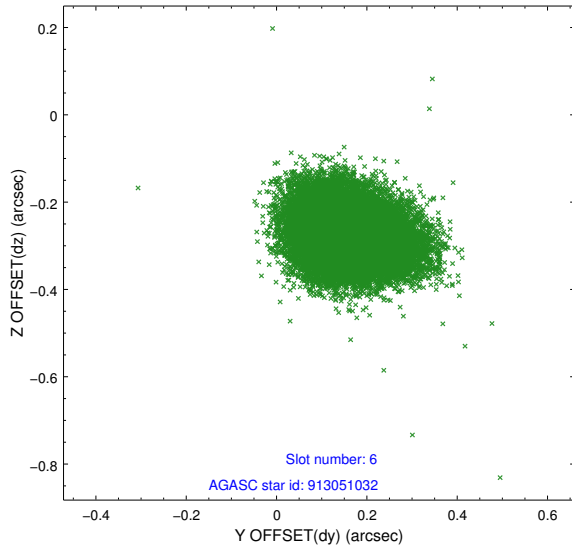
2.4.2 Slot 4



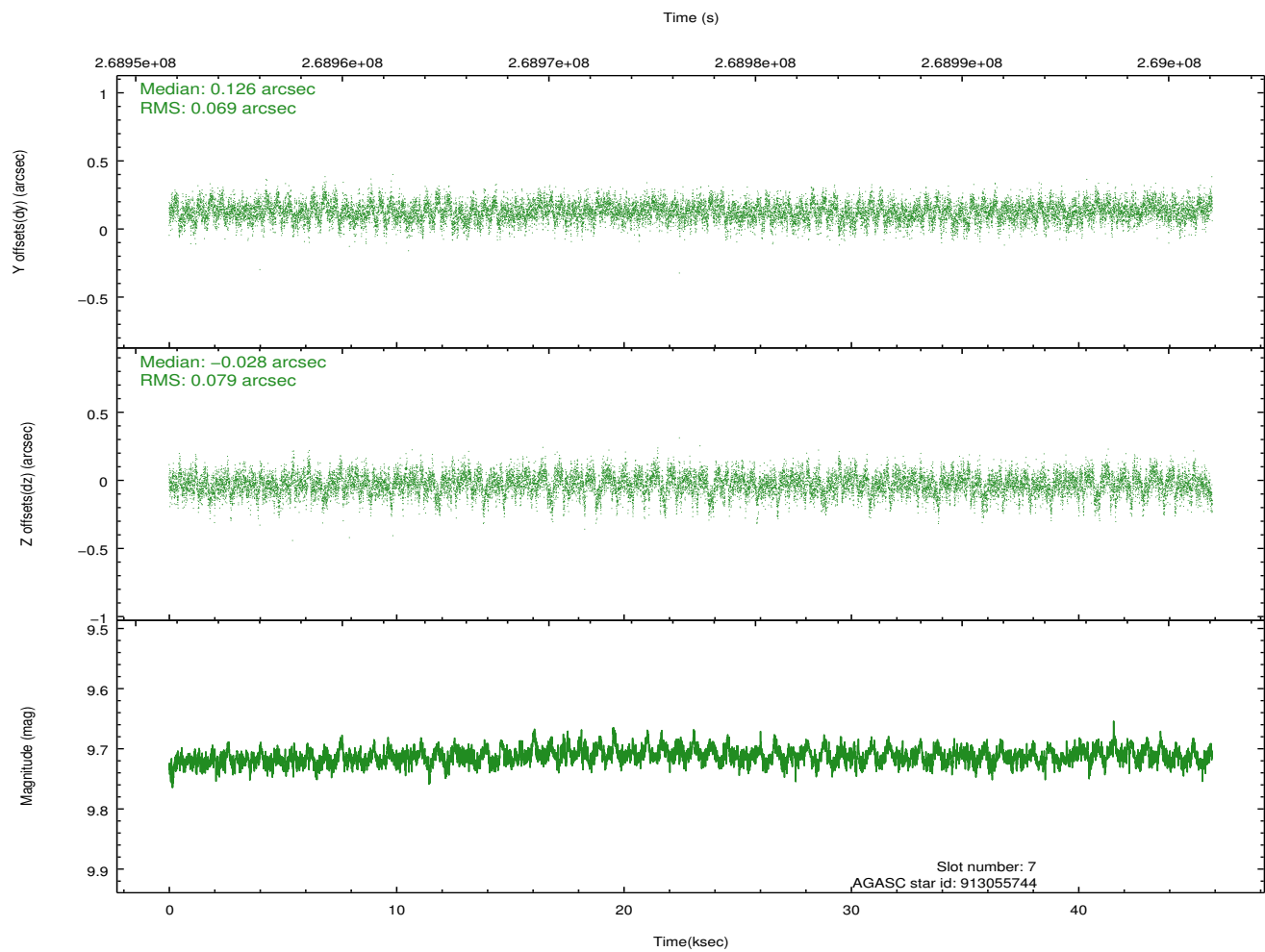
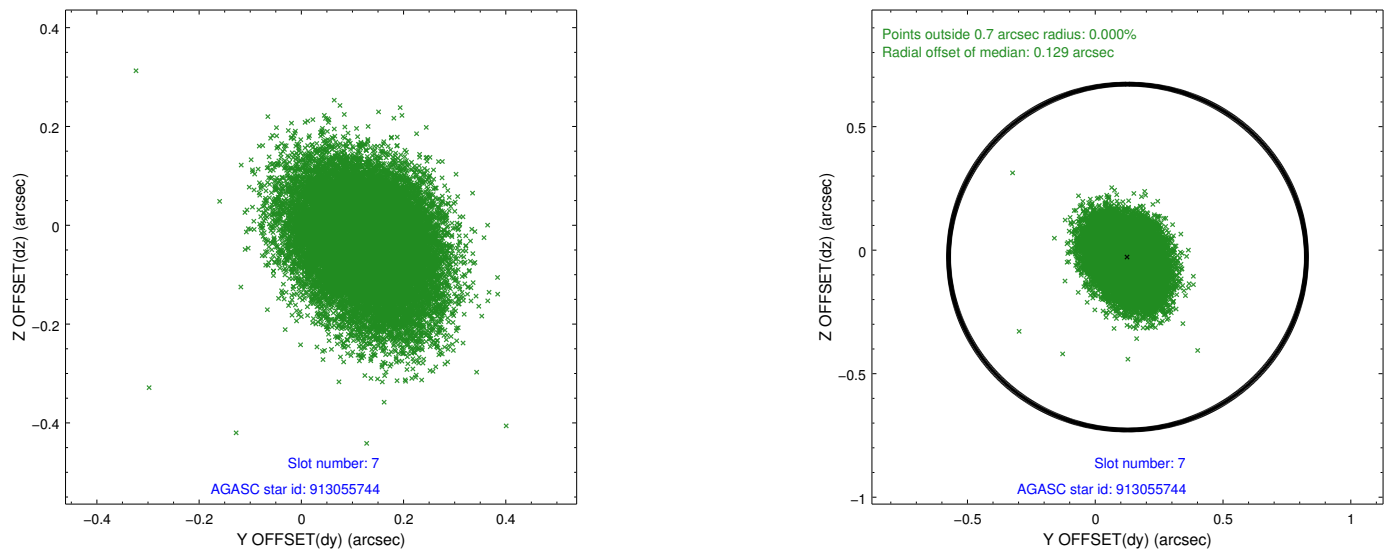
2.4.3 Slot 5



2.4.4 Slot 6

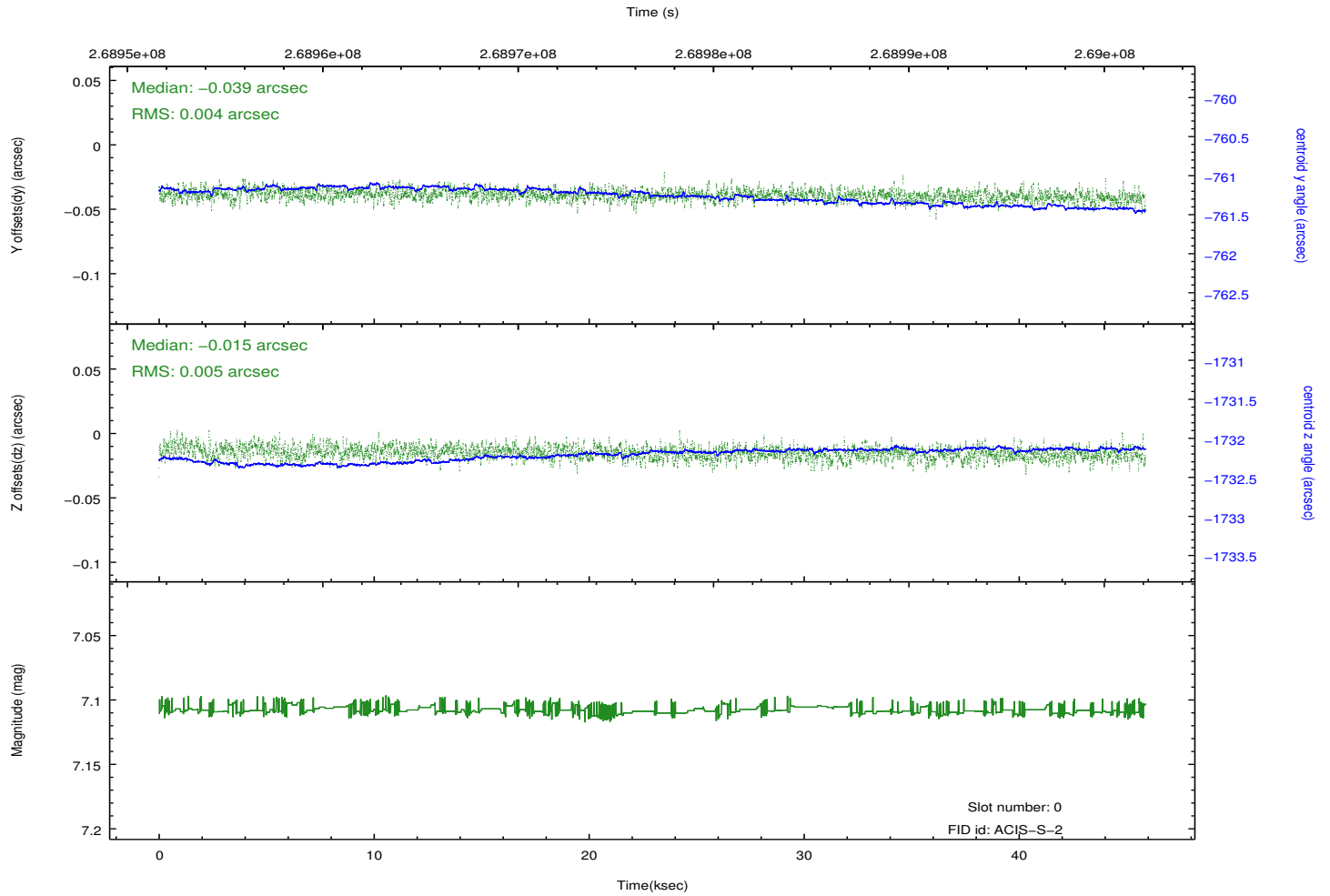
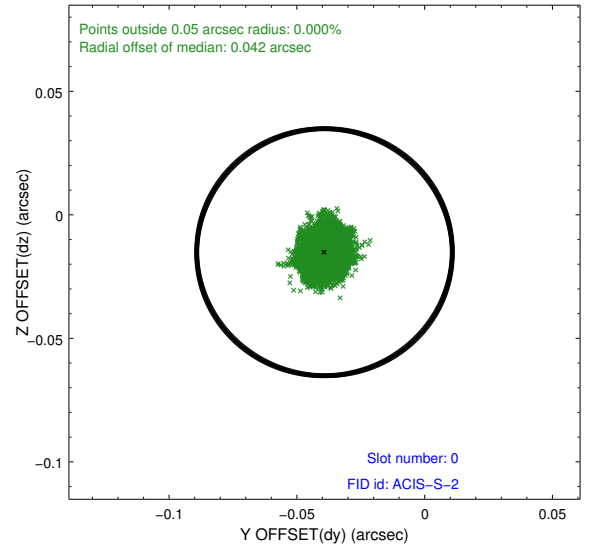
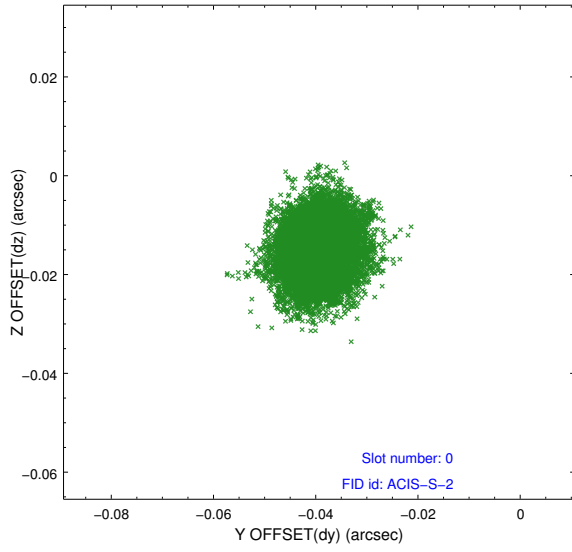


2.4.5 Slot 7

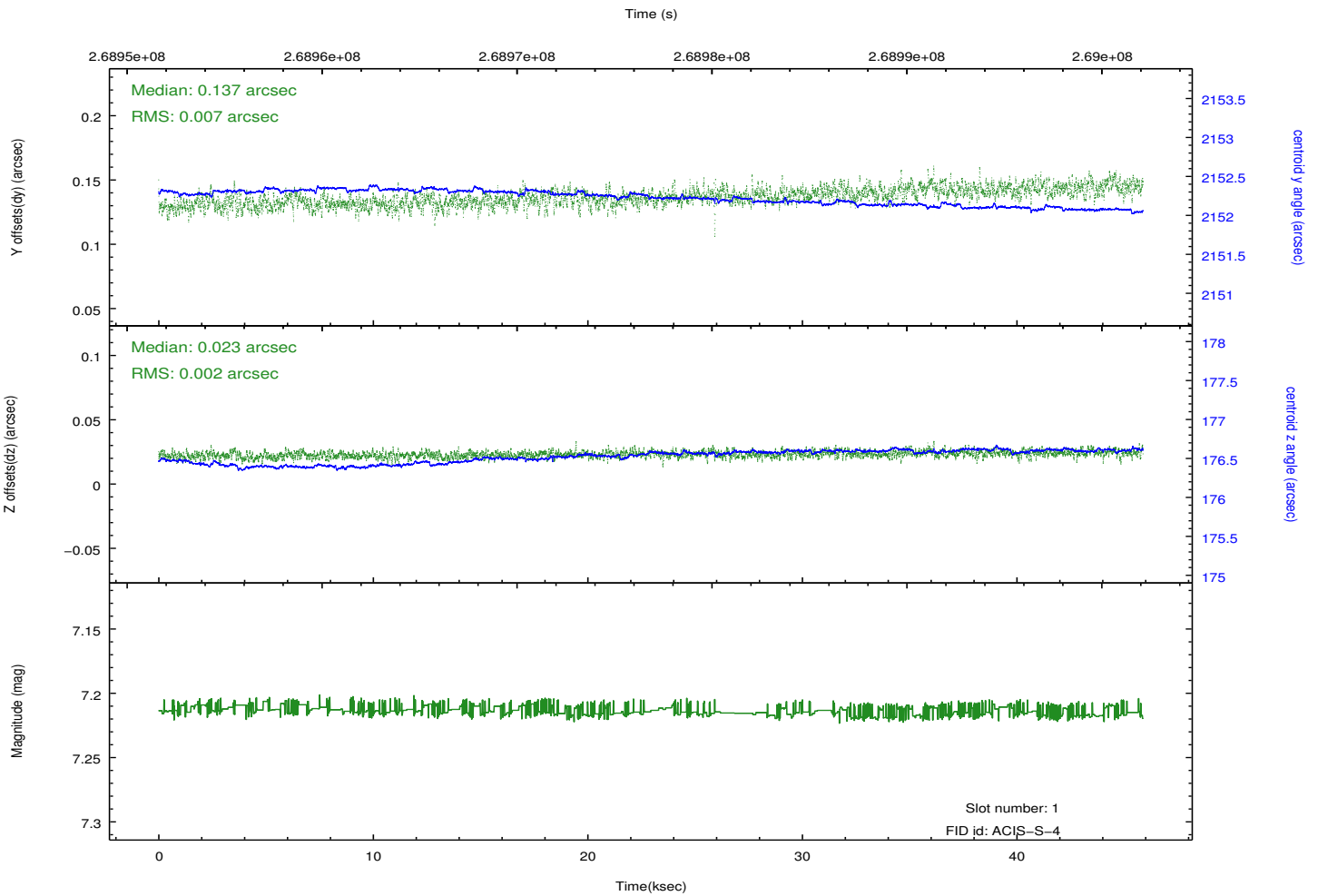
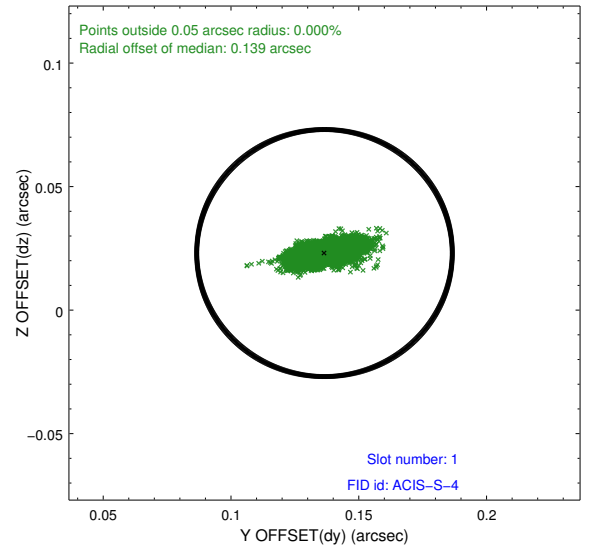
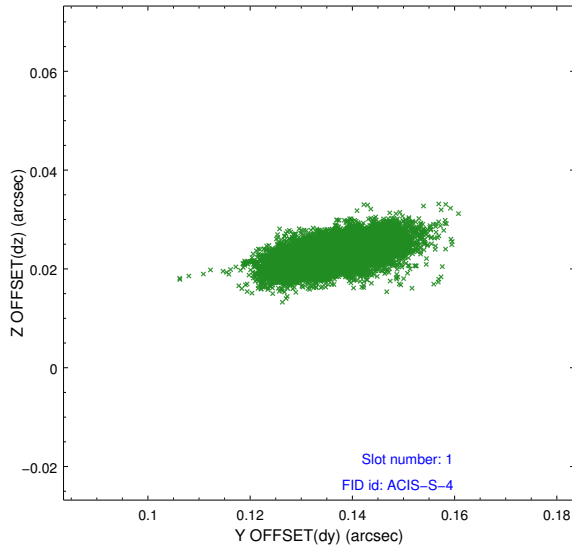


2.5 FID Slots

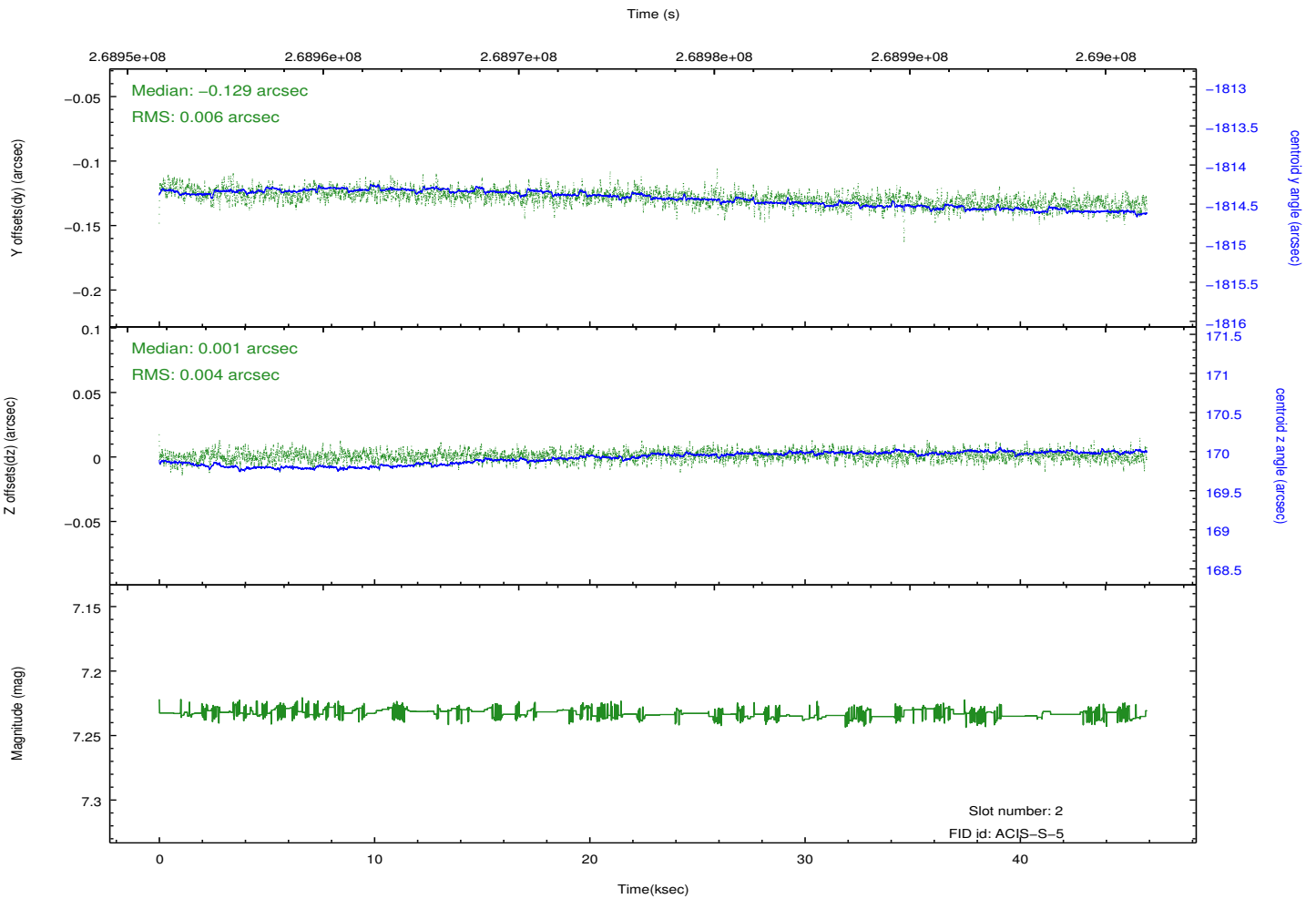
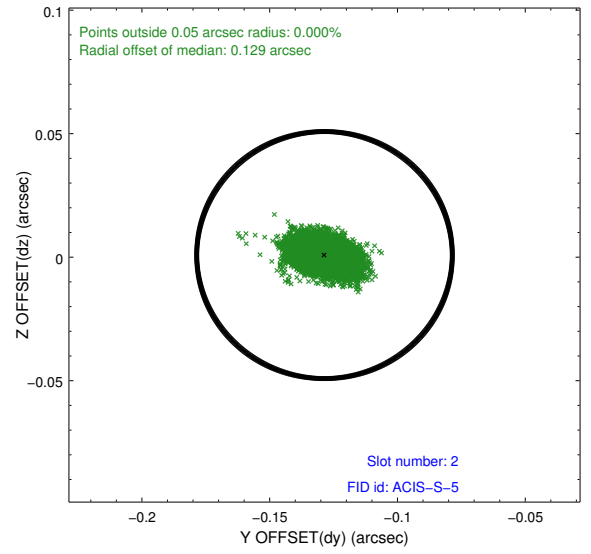
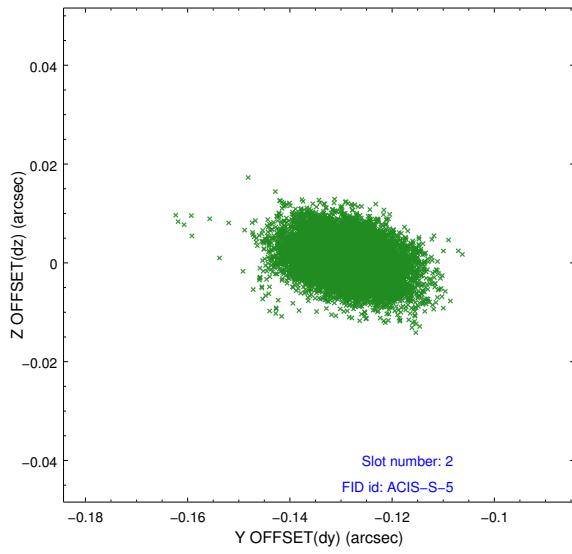
2.5.1 Slot 0



2.5.2 Slot 1



2.5.3 Slot 2



A Summary

A.1 Status

V&V Scientist	Jen Lauer
V&V Date (YYYY-MM-DD)	2012.04.05
V&V Edition	1
V&V Disposition and Status	OK
V&V Charge Time	45.0368003

A.2 Comments