

V&V Reference Report

L2 ASCDS Version : 8.4.4

Observation 7045 - L2 Version 3
Chandra X-Ray Center

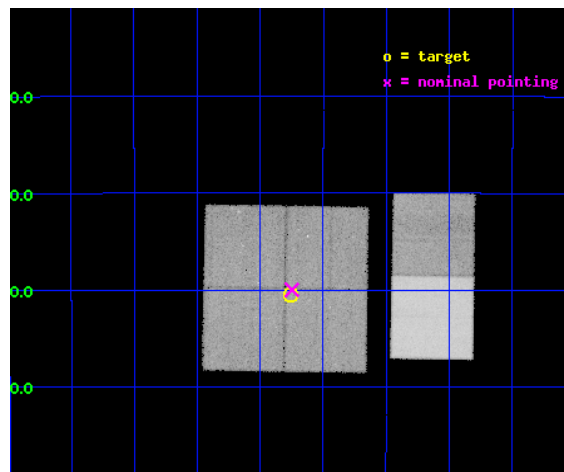
L2 Processing Date : Apr 20 2012

Contents

1	Front	2
2	OBI	3
2.1	OBI	3
2.1.1	Images	3
2.1.2	Bias	3
2.1.3	Parameters	4
2.1.4	Events	4
2.2	Compared Parameters	5
2.3	Aspect	6
2.4	Star Slots	9
2.4.1	Slot 3	9
2.4.2	Slot 4	10
2.4.3	Slot 5	11
2.4.4	Slot 6	12
2.4.5	Slot 7	13
2.5	FID Slots	14
2.5.1	Slot 0	14
2.5.2	Slot 1	15
2.5.3	Slot 2	16
A	Summary	17
A.1	Status	17
A.2	Comments	17

1 Front

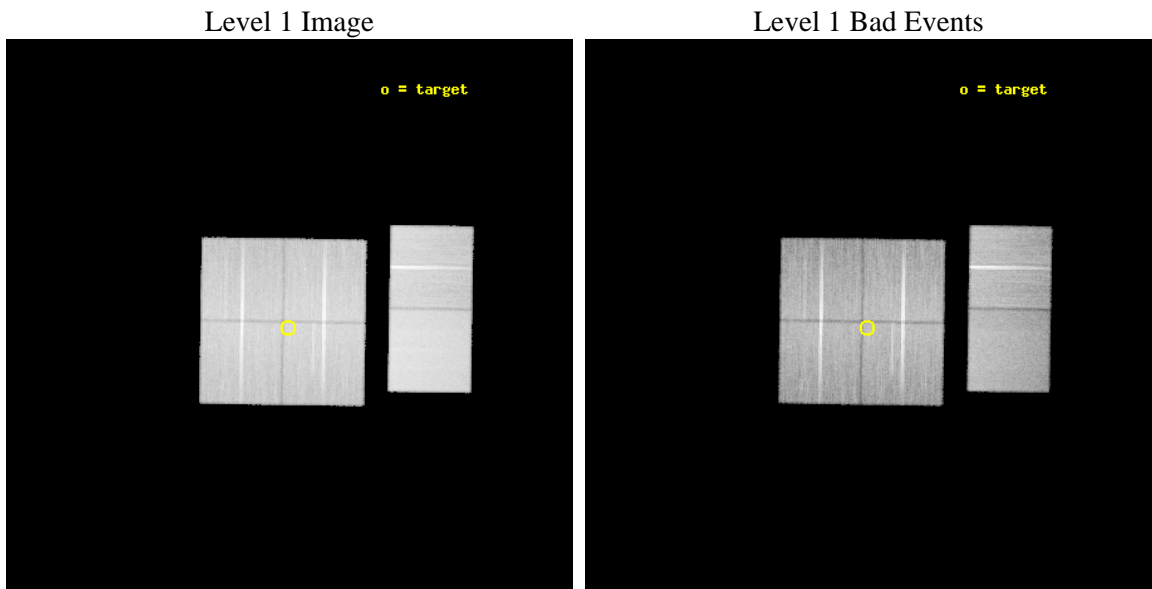
seq_num	900461	Sequence number
obs_id	7045	Observation id
title	A Legacy Study of Stellar Life Cycles at the Galactic Center	Propo
observer	Dr. Michael Muno	Principal investigator
object	Deep GCS 24	Source name
dtcycle	0	
cycle	P	events from which exps? Prim/Second/Both
ra_targ	266.44	Observer's specified target RA [deg]
dec_targ	-28.507611	Observer's specified target Dec [deg]
ra_nom	266.43713091772	Nominal RA [deg]
dec_nom	-28.499946934364	Nominal Dec [deg]
roll_nom	90.917569218059	Nominal Roll [deg]
revision	3	Processing version of data
ontime	37503.999860346	Sum of GTIs [s]
livetime	37029.101631917	Livetime [s]
ontime0	37500.758870184	Sum of GTIs [s]
ontime1	37500.758860171	Sum of GTIs [s]
ontime2	37503.999860346	Sum of GTIs [s]
ontime3	37503.999860346	Sum of GTIs [s]
ontime6	37500.758890033	Sum of GTIs [s]
ontime7	37503.999860346	Sum of GTIs [s]
l2events	418352	Number of level 2 events



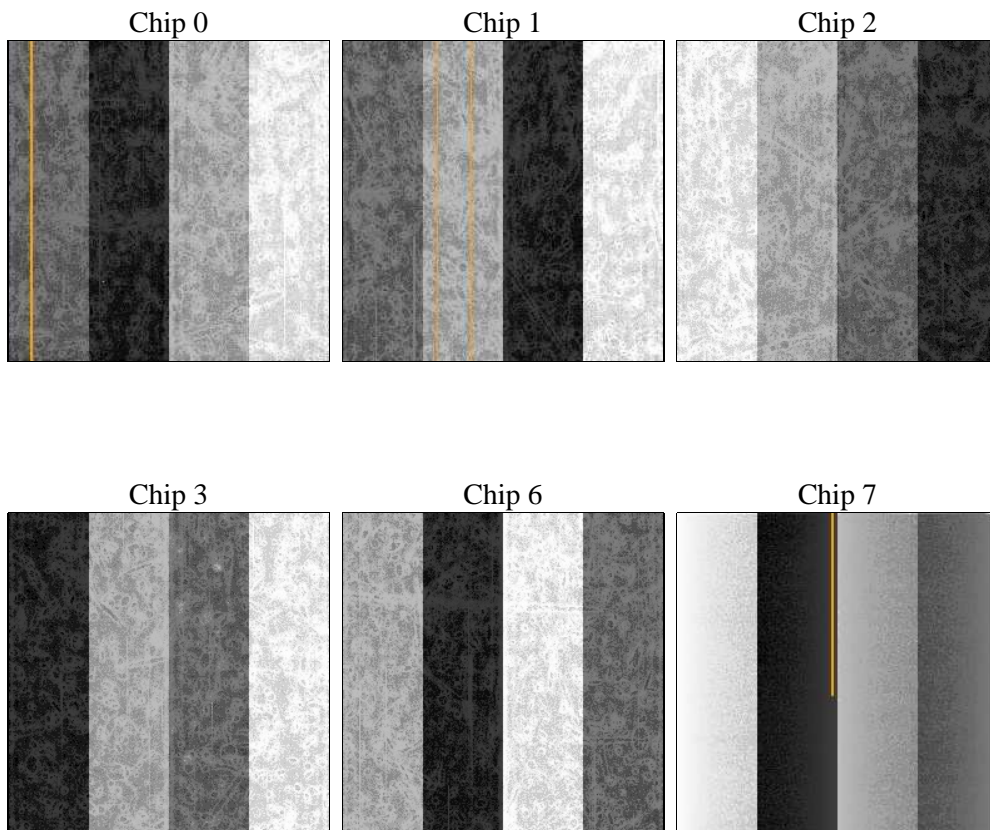
2 OBI

2.1 OBI

2.1.1 Images



2.1.2 Bias



2.1.3 Parameters

obi_num	0	Obi number	sched_exp_time	37366.000000	[s] Scheduled observation exposure time
ascdsver	8.4.4	Processing system revision	ontime	37503.999860346	Sum of GTIs [s]
caldbver	4.4.9	 	ontime0	37500.758870184	Sum of GTIs [s]
date	2012-04-20T15:28:31	Date and time of file creation	ontime1	37500.758860171	Sum of GTIs [s]
revision	3	Processing version of data	ontime2	37503.999860346	Sum of GTIs [s]
			ontime3	37503.999860346	Sum of GTIs [s]
			ontime6	37500.758890033	Sum of GTIs [s]
			ontime7	37503.999860346	Sum of GTIs [s]
			l1events	2225057	Number of level 1 events

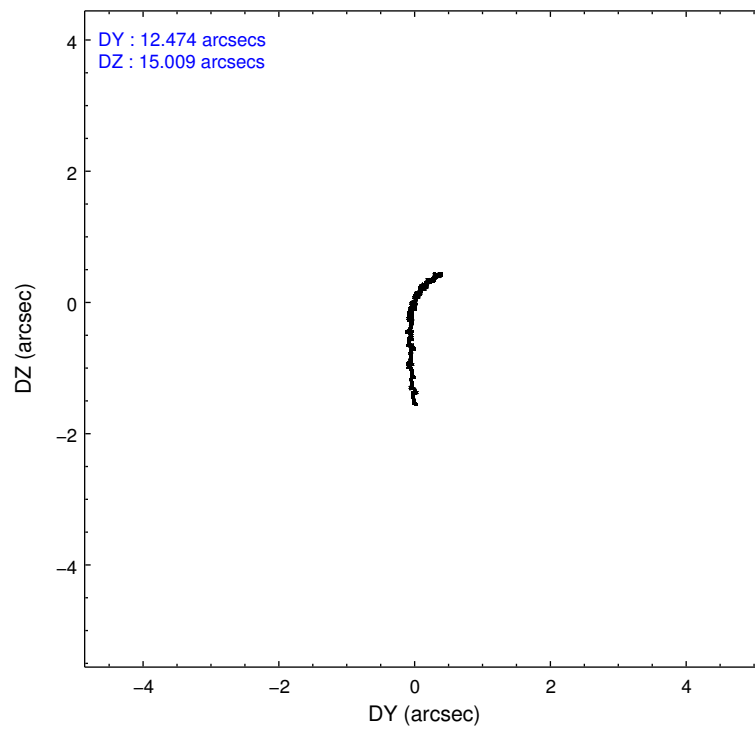
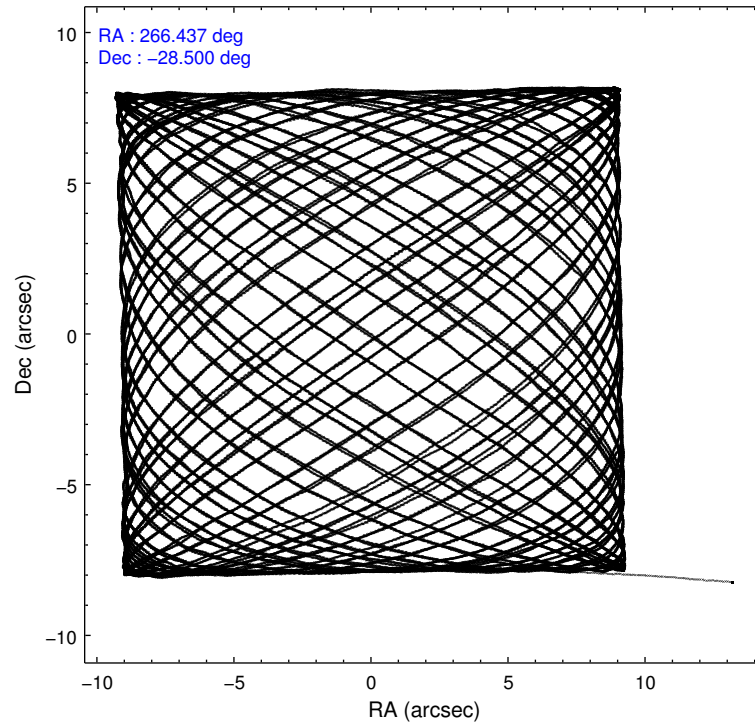
2.1.4 Events

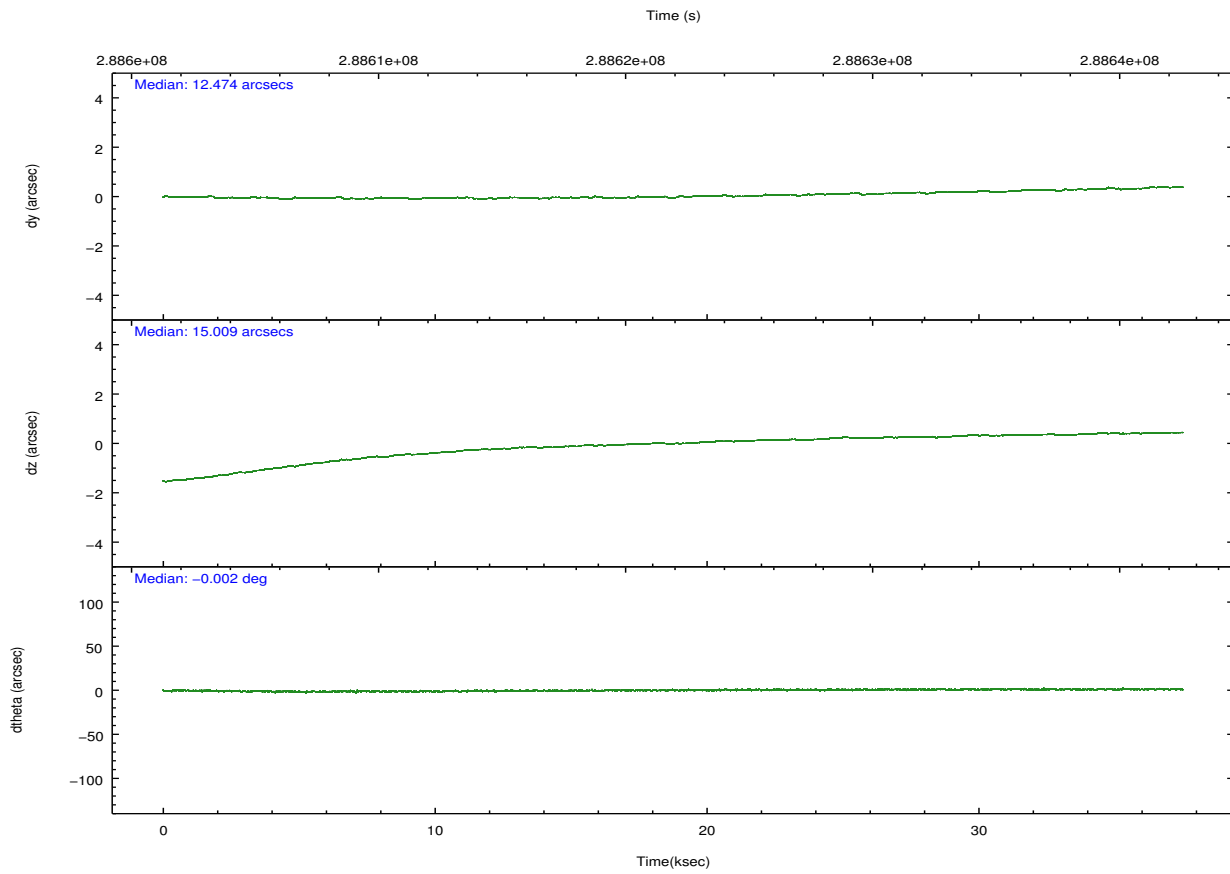
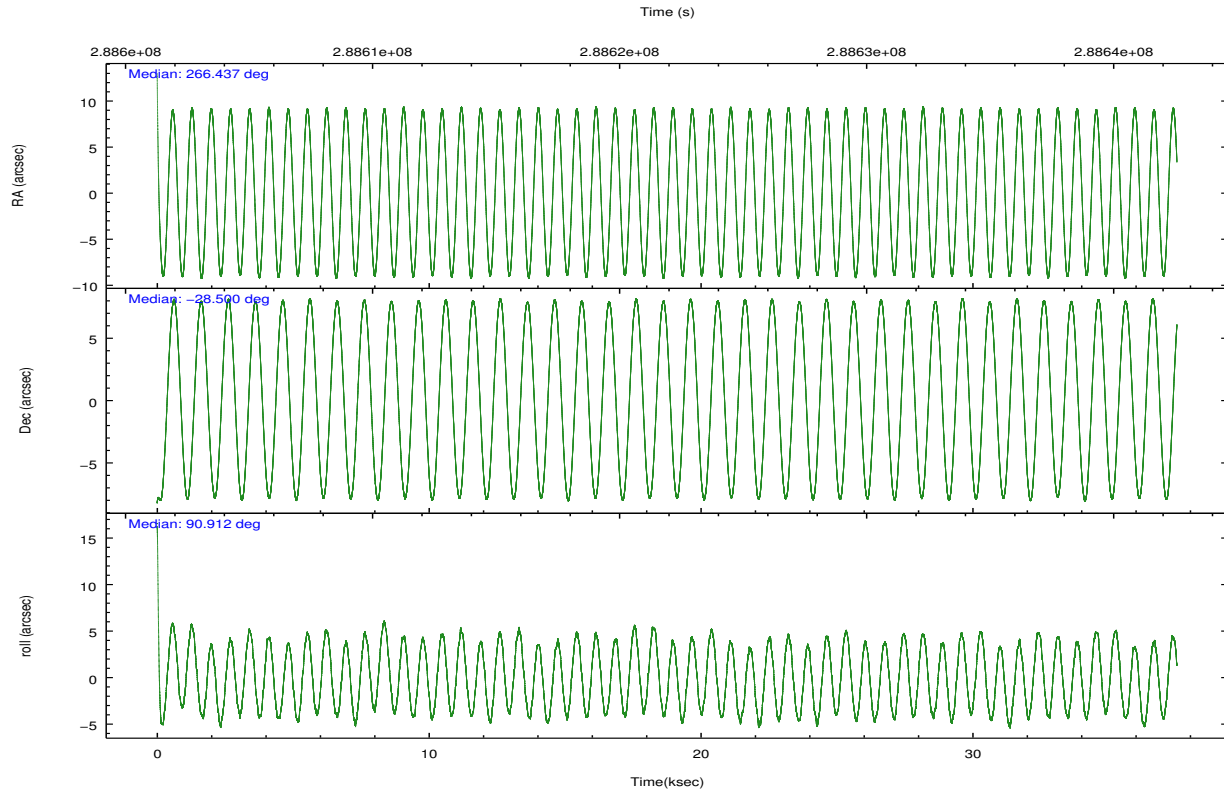
	ccd 0	ccd 1	ccd 2	ccd 3	ccd 6	ccd 7		ccd 0	ccd 1	ccd 2	ccd 3	ccd 6	ccd 7
level 1 events	326730	332999	360653	346733	370850	487092	grade 0 events	22899	23218	24123	23843	21464	18604
rejected events	277492	280058	311989	297751	322287	281326		7%	6%	6%	6%	5%	3%
rejected %	84%	84%	86%	85%	86%	57%	grade 1 events	246	215	300	301	205	496
								0%	0%	0%	0%	0%	0%
							grade 2 events	10285	11454	9438	8974	10118	42426
								3%	3%	2%	2%	2%	8%
							grade 3 events	4376	4511	4025	4356	4236	18079
								1%	1%	1%	1%	1%	3%
							grade 4 events	4117	4616	4144	4299	4170	18137
								1%	1%	1%	1%	1%	3%
							grade 5 events	14053	15307	13937	15962	16917	45564
								4%	4%	3%	4%	4%	9%
							grade 6 events	7811	9411	7180	7769	8836	109620
								2%	2%	1%	2%	2%	22%
							grade 7 events	262943	264267	297506	281229	304904	234166
								80%	79%	82%	81%	82%	48%

2.2 Compared Parameters

Parameter	Planned	Actual	Parameter	Planned	Actual
Instrument	ACIS	ACIS	Obspar format version number	7	7
Detector	ACIS-012367	ACIS-012367	Obspar file type	PREDICTED	ACTUAL
Grating	NONE	NONE	Obspar update status	NONE	UPDATED
Data mode	FAINT	FAINT	Number of optional ACIS chips dropped	0	0
Observation mode	POINTING	POINTING	On-chip summing requested	N	N
[deg] Pointing RA	266.453320	266.4371309177168	Subarray requested	NONE	NONE
[deg] Pointing Dec	-28.523465	-28.49994693436389	Alternating exposures requested	N	N
[deg] Pointing Roll	90.716610	90.91756921805913	[s] Primary exposure time	0.000000	3.2
[mm] SIM focus pos	-0.782348	-0.7809083437167272			
[mm] SIM defocus	0	0.001439871863259334			
[mm] SIM translation stage pos	-233.592463	-233.5874344608287			
[mm] SIM translation stage offset	0	-0.005018542100998502			
[s] Observation start time (MET)	288603305.184000	288602157.92354			
Observation start date	2007-02-23T07:34:00	2007-02-23T07:15:57			
[s] Observation end time (MET)	288640671.184000	288641543.03792			
Observation end date	2007-02-23T17:56:46	2007-02-23T18:12:23			
Read mode	TIMED	TIMED			

2.3 Aspect



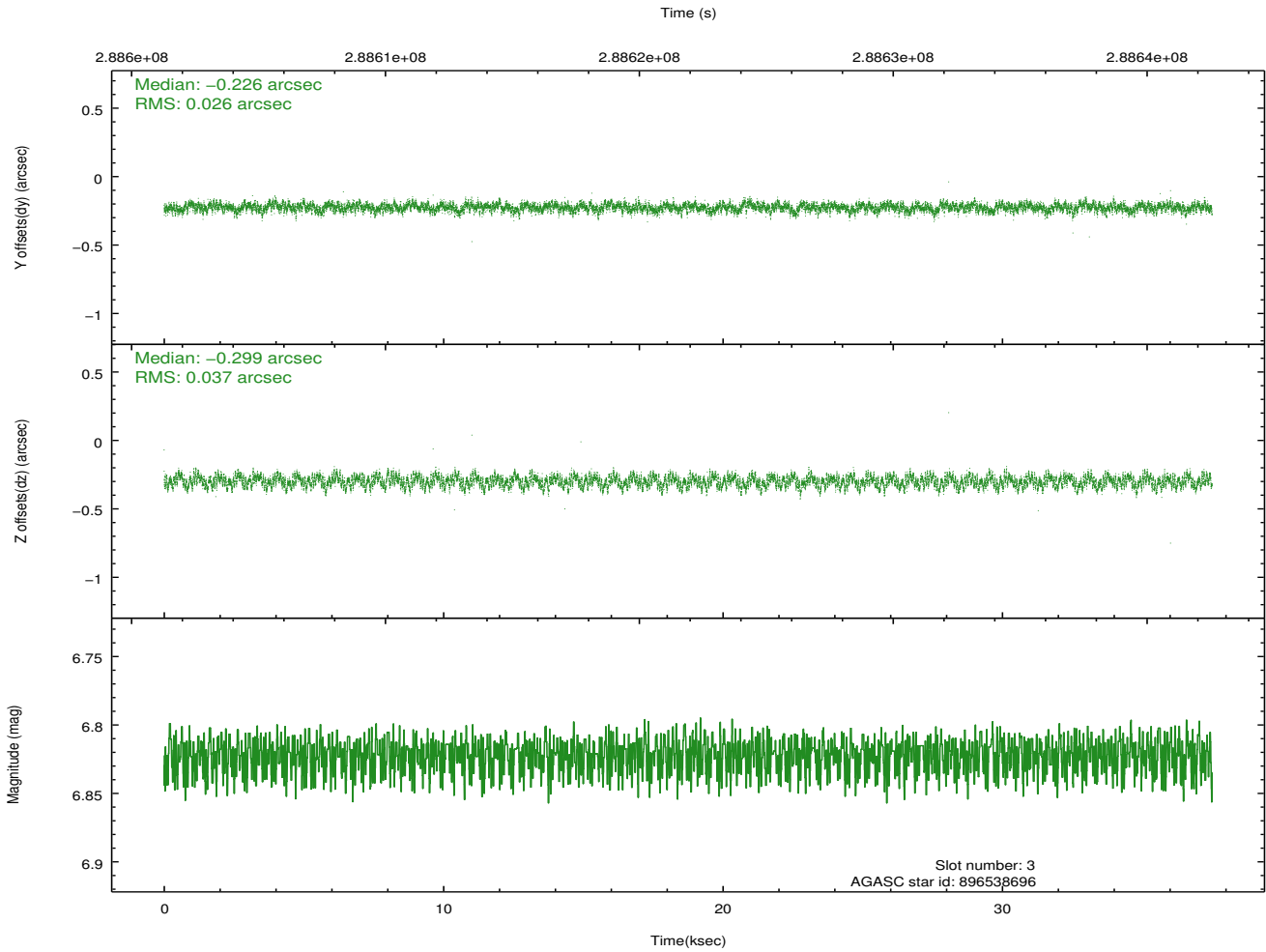
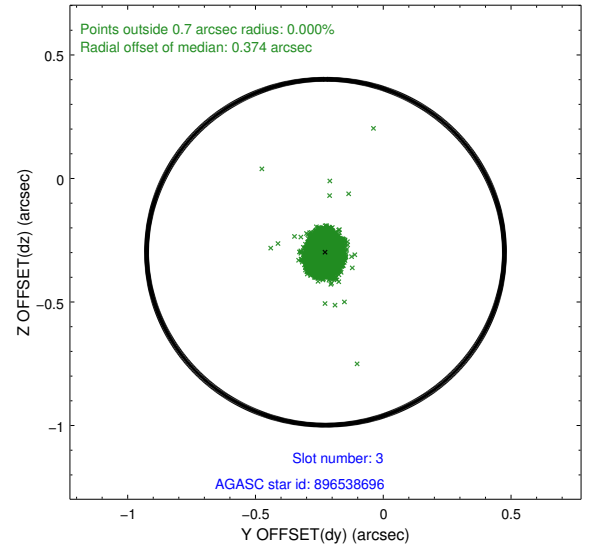
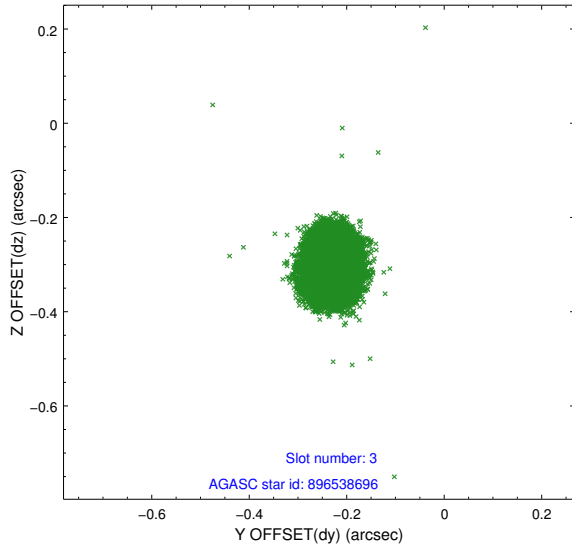


Slot Statistics

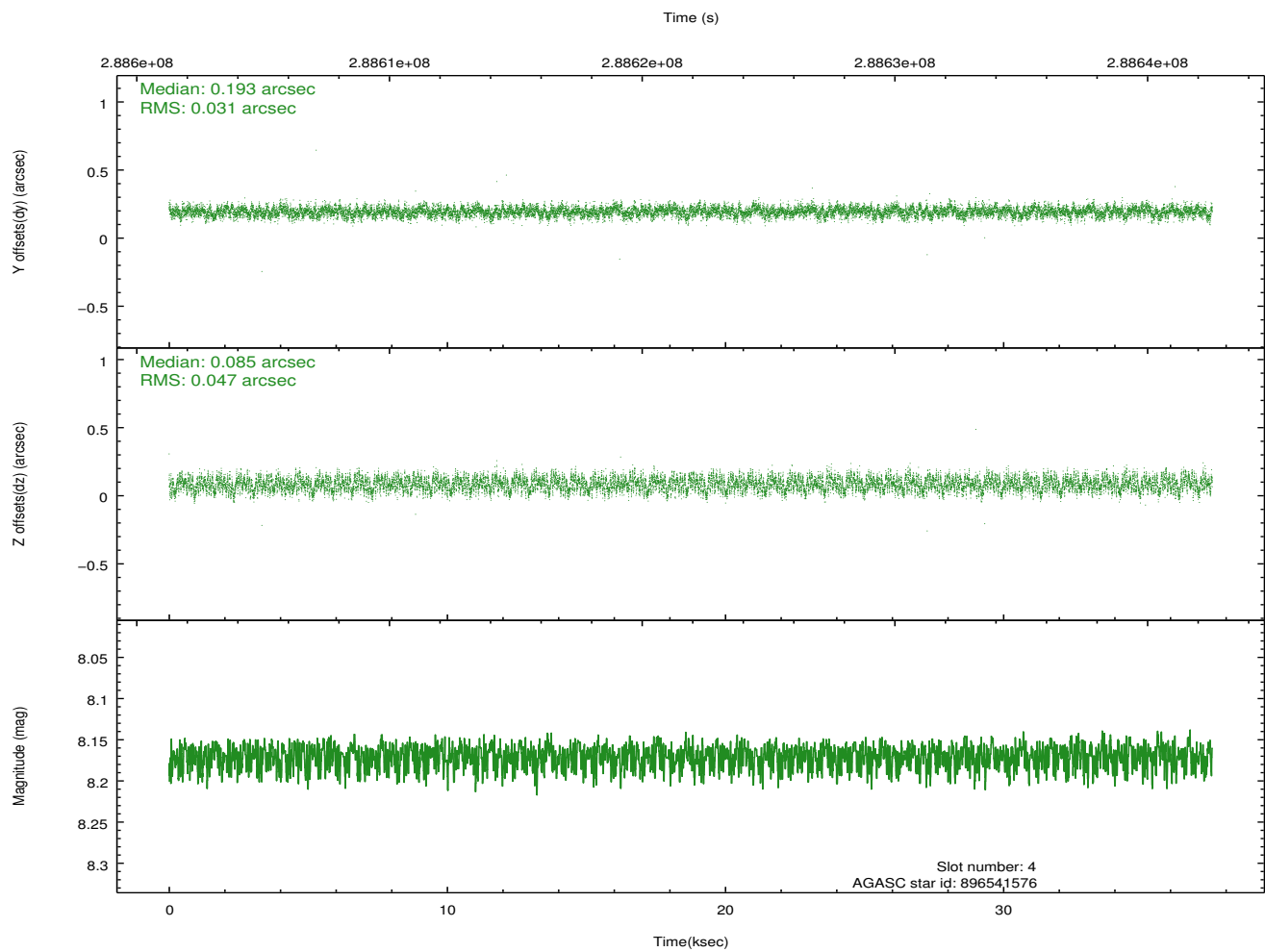
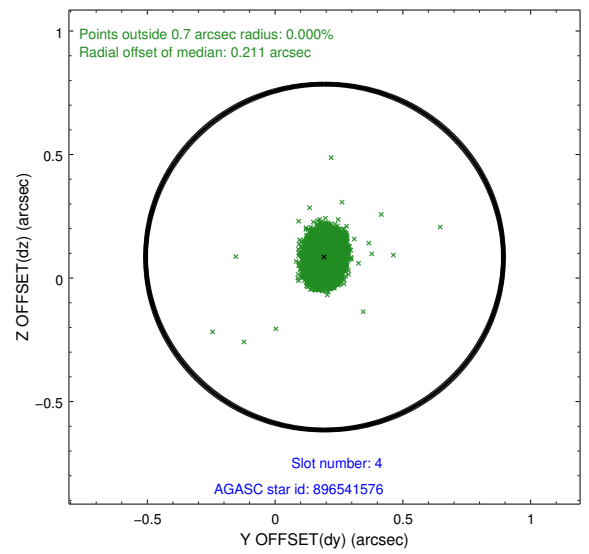
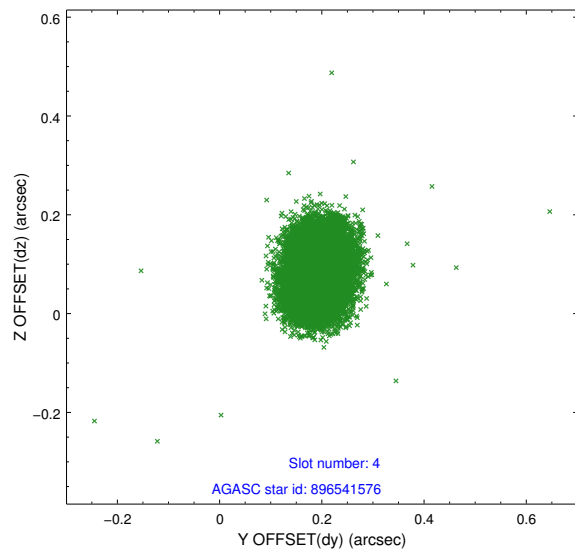
slot	status	id	mag	n_pts	med_dy	med_dz	dr1	dr2	ra	dec	mean_y	mean_z
0	FID	ACIS-I-1	7.23	9148	0.032	-0.019	0.023	0.037	0.000000	0.000000	927.02	-838.47
1	FID	ACIS-I-5	7.22	9146	-0.195	0.039	0.008	0.015	0.000000	0.000000	-1821.29	1059.06
2	FID	ACIS-I-6	7.24	9148	0.071	0.051	0.015	0.040	0.000000	0.000000	392.58	1703.60
3	GUIDE	896538696	6.82	18297	-0.226	-0.299	0.048	0.077	266.298470	-28.325572	718.27	481.66
4	GUIDE	896541576	8.17	18286	0.193	0.085	0.060	0.095	267.051055	-28.762912	-889.49	-1875.22
5	GUIDE	896539744	8.32	18293	-0.101	-0.206	0.065	0.103	266.154264	-28.178023	1254.31	933.35
6	GUIDE	896534128	8.68	18284	0.260	0.056	0.081	0.130	266.503837	-29.080853	-2007.76	-133.80
7	GUIDE	896540888	7.91	18258	-0.126	0.370	0.066	0.110	267.212234	-28.246138	961.01	-2418.38

2.4 Star Slots

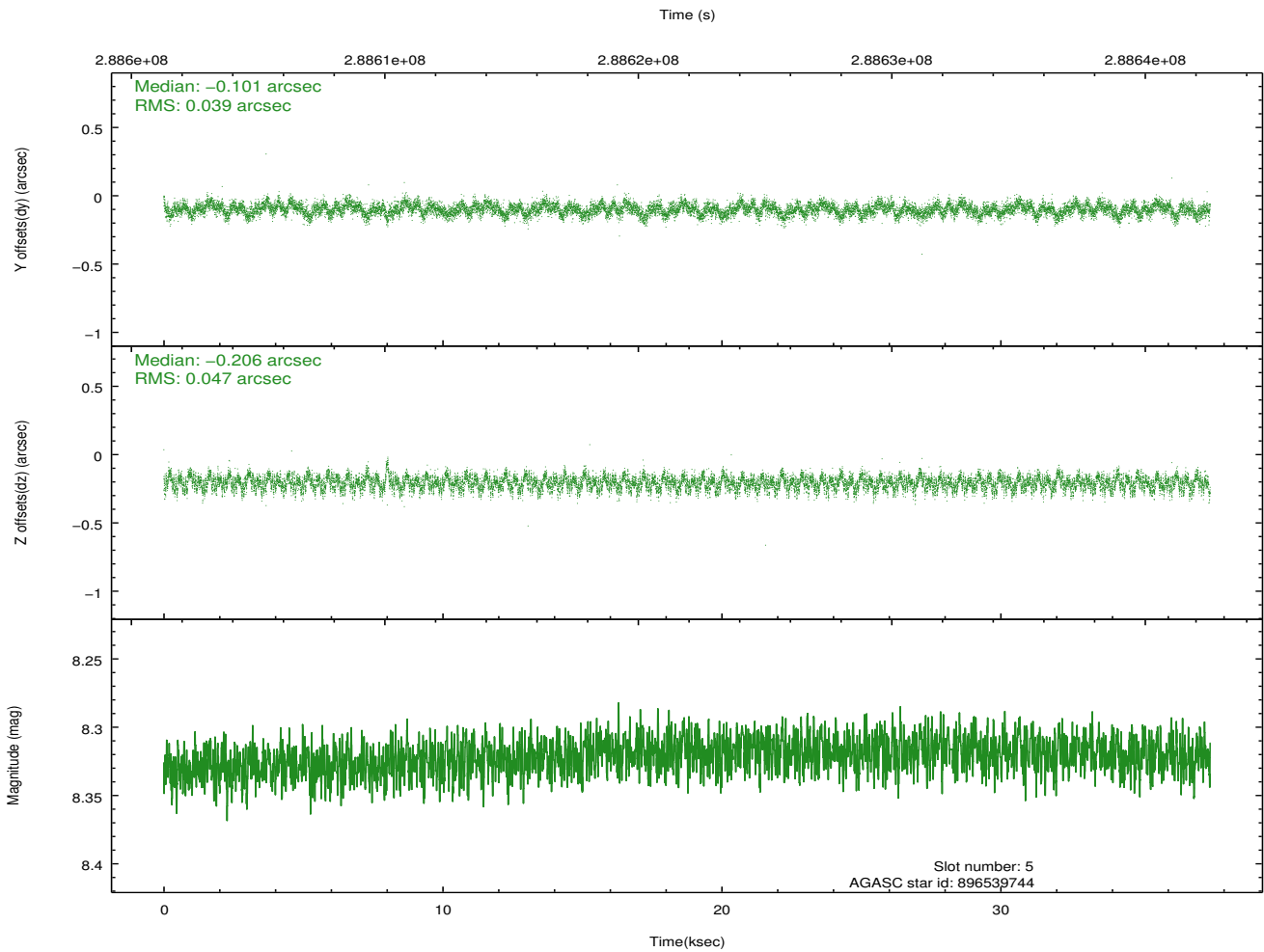
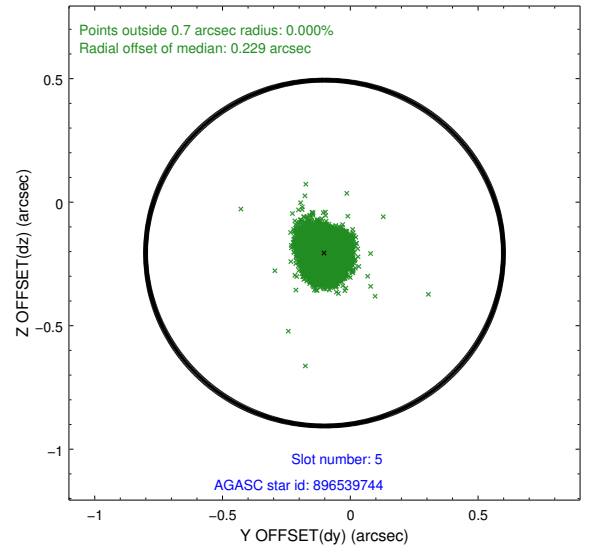
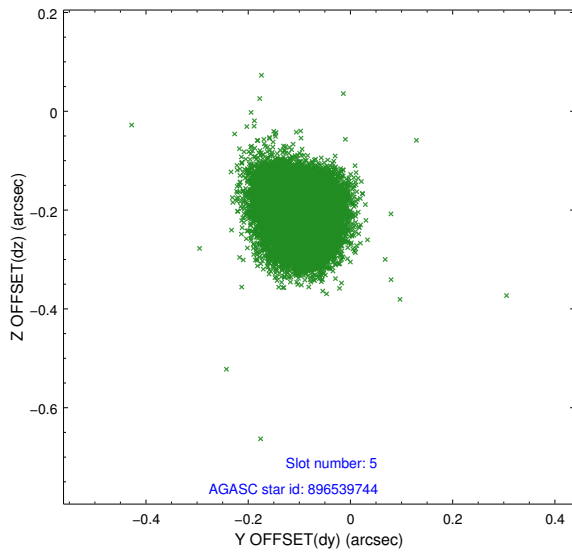
2.4.1 Slot 3



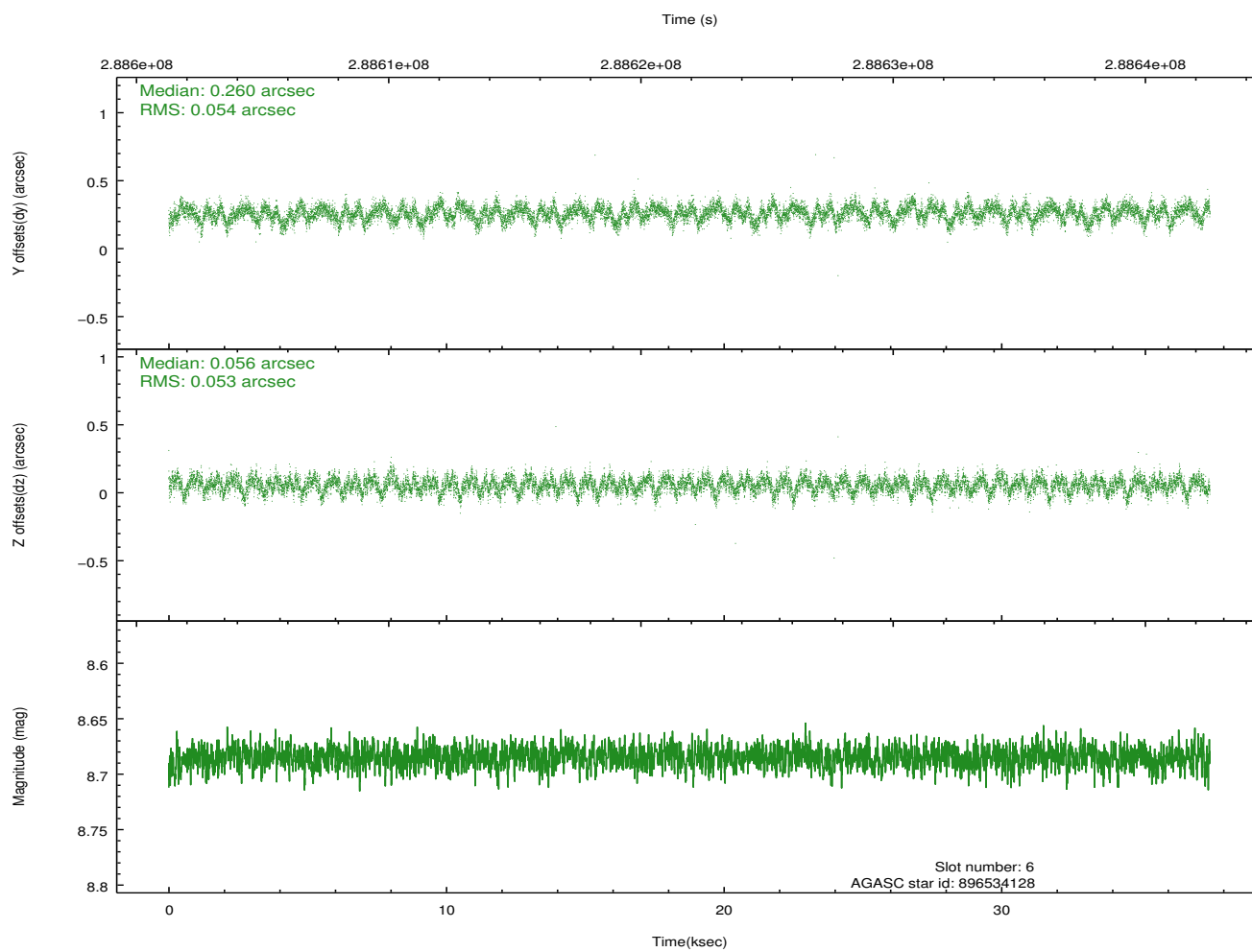
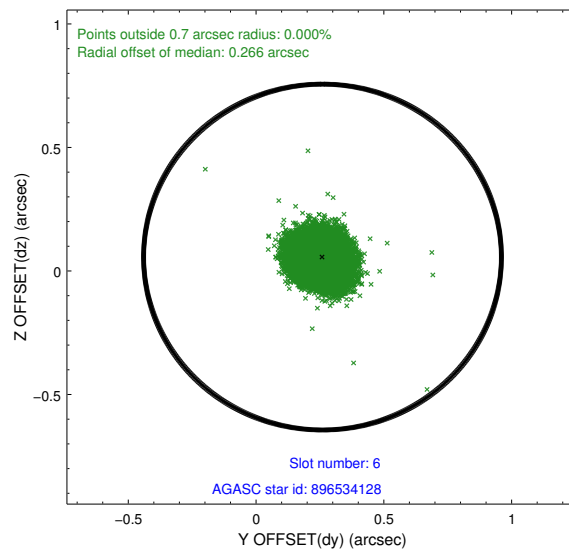
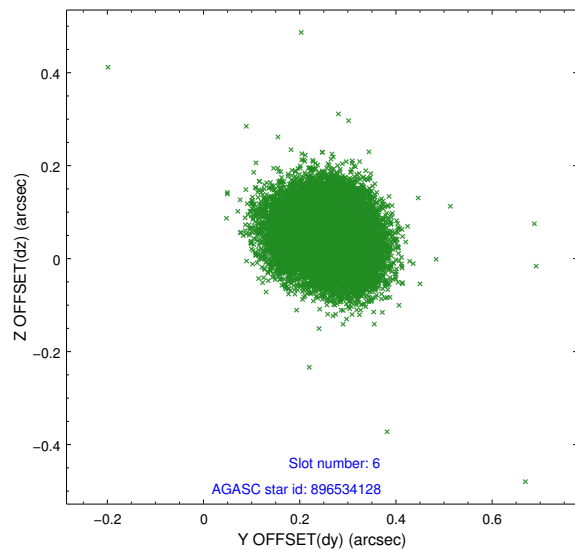
2.4.2 Slot 4



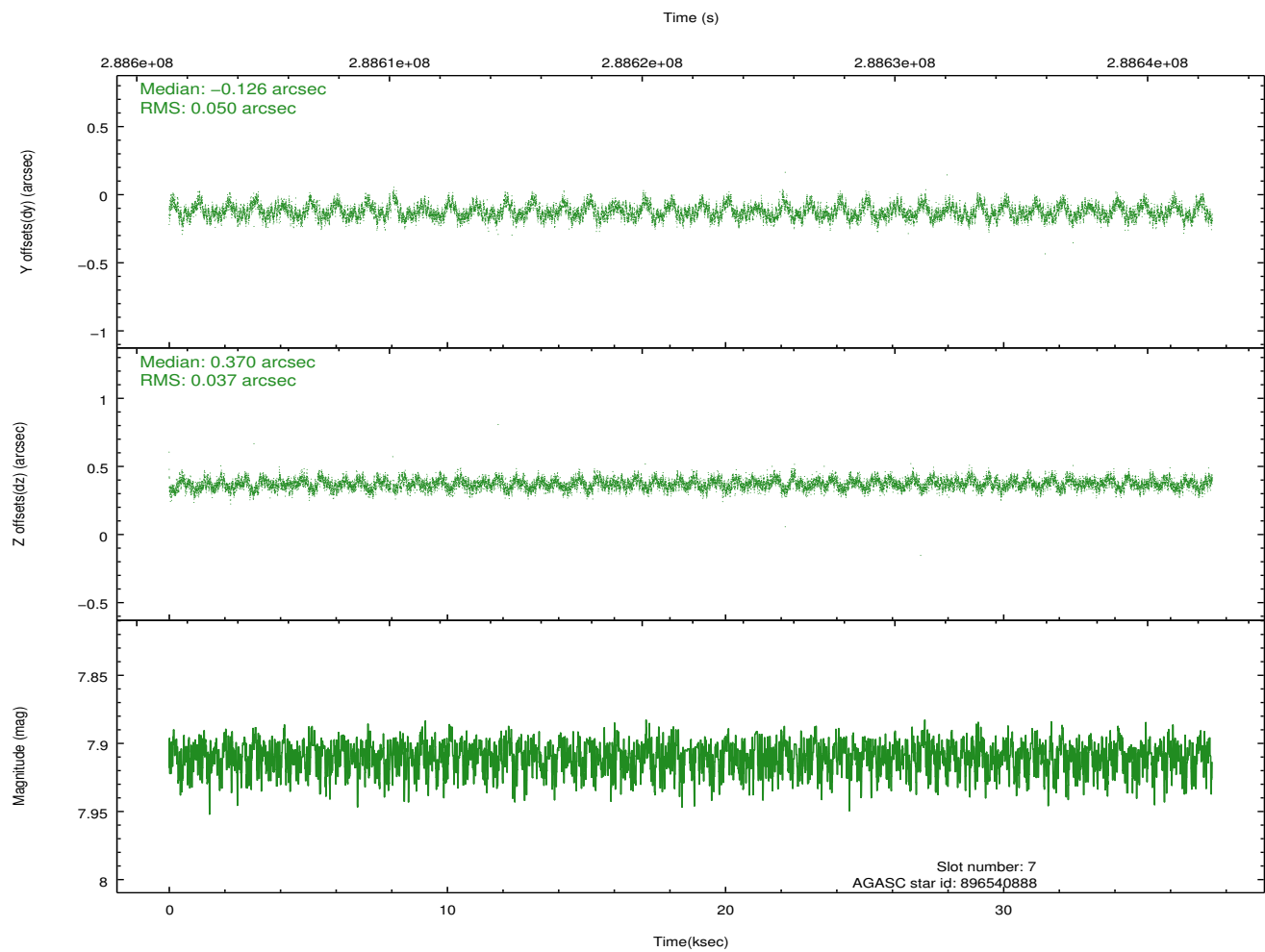
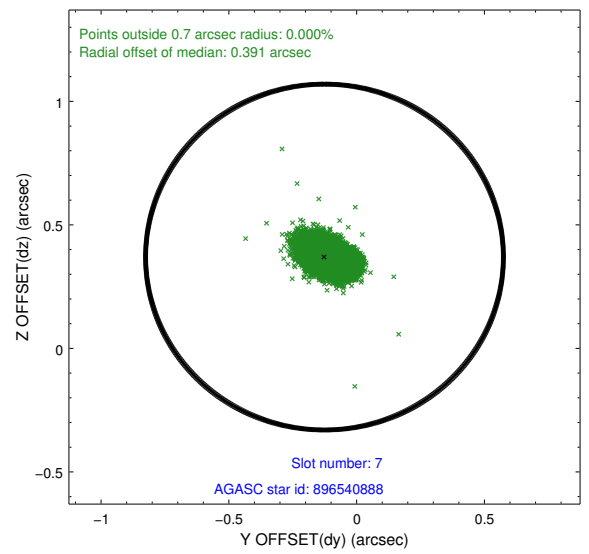
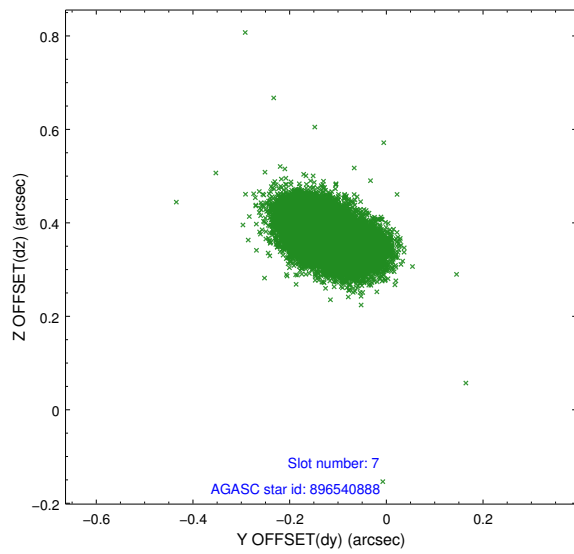
2.4.3 Slot 5



2.4.4 Slot 6

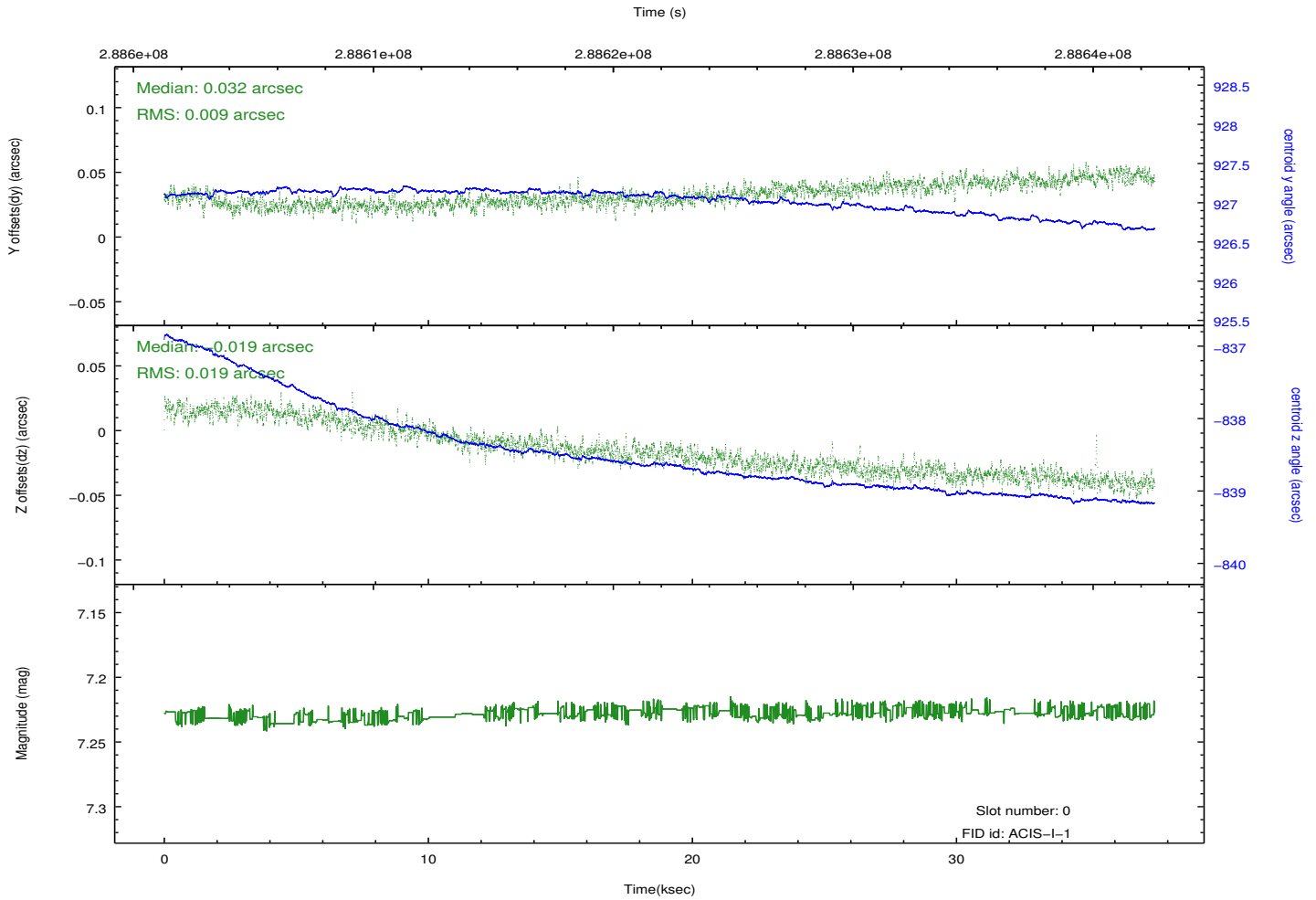
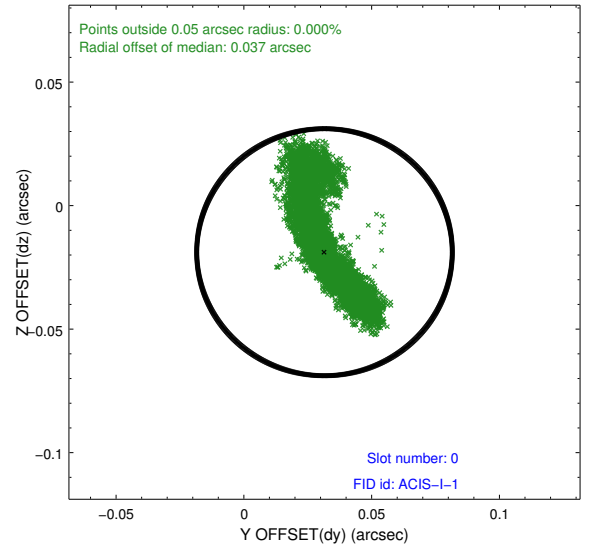
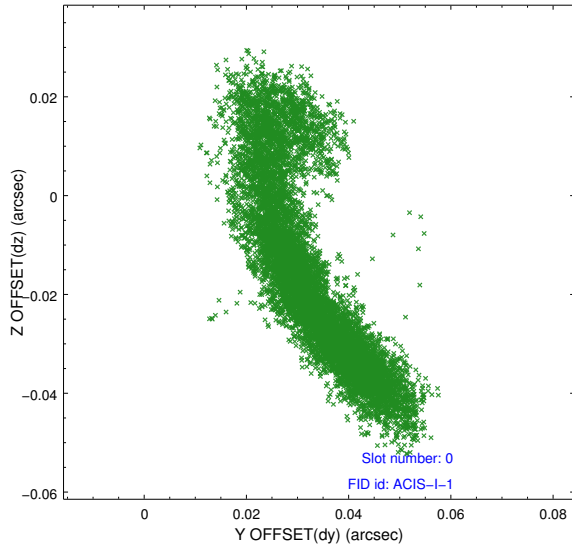


2.4.5 Slot 7

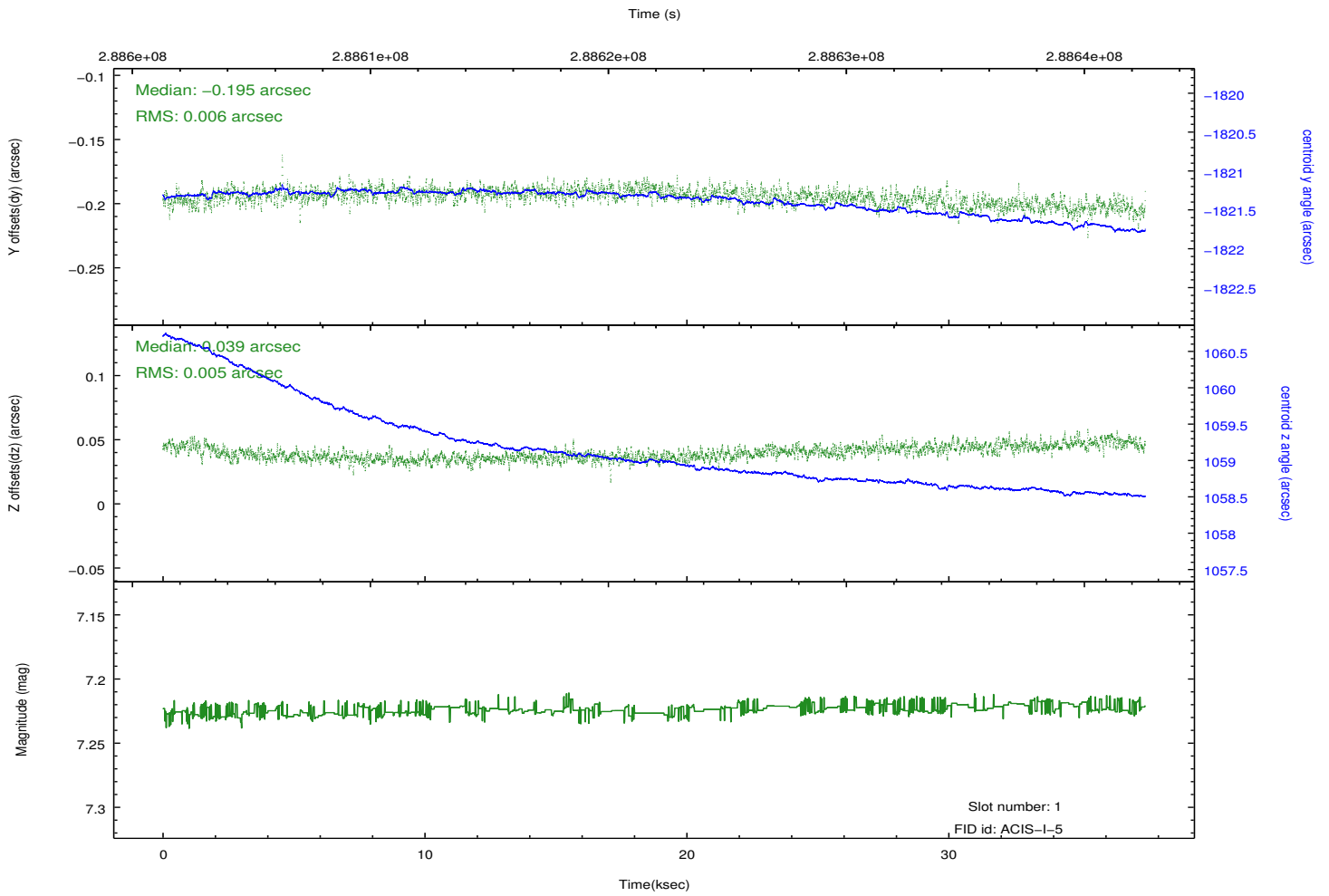
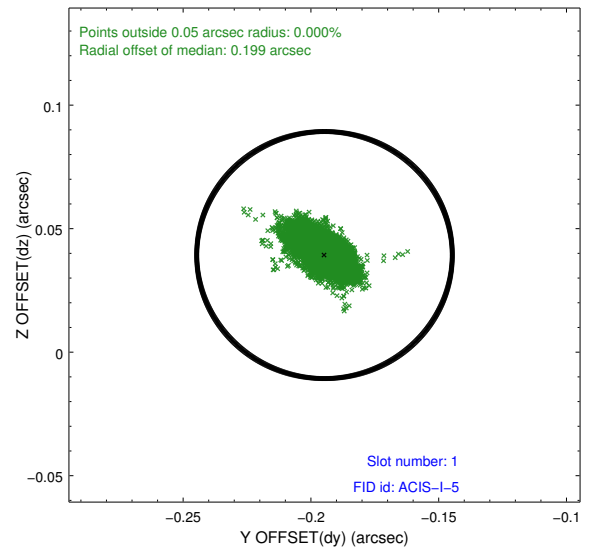
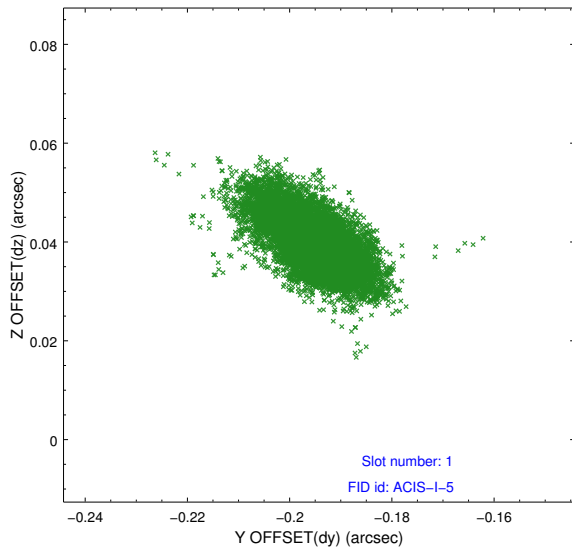


2.5 FID Slots

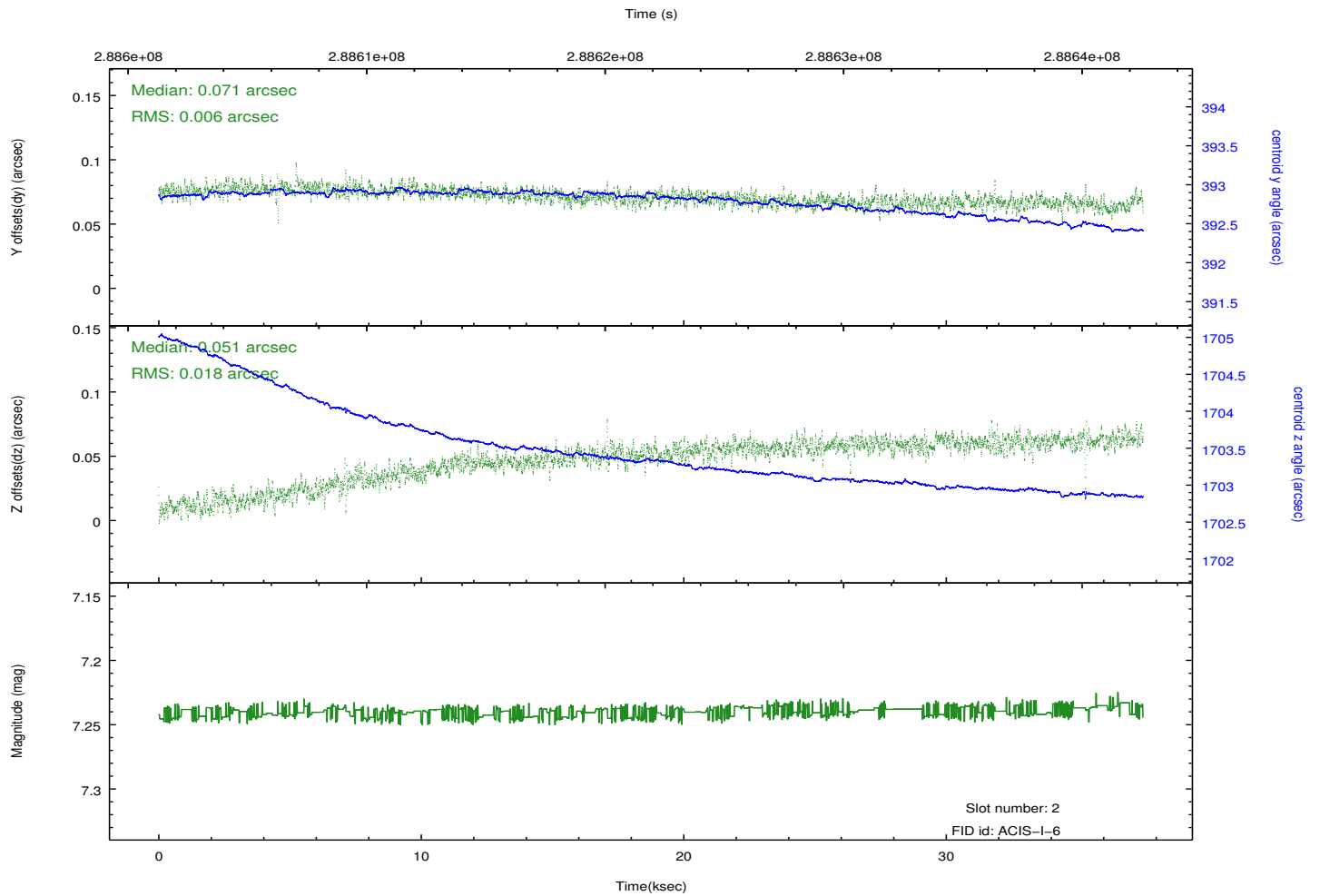
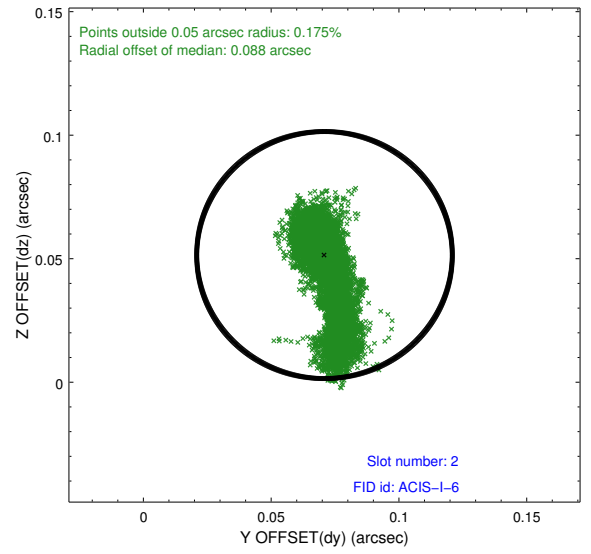
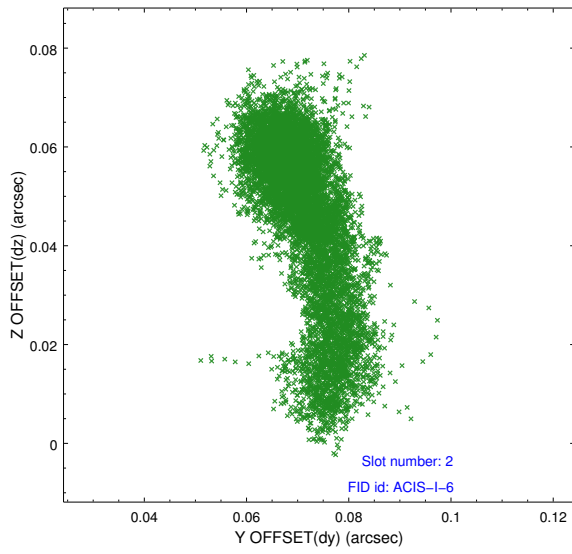
2.5.1 Slot 0



2.5.2 Slot 1



2.5.3 Slot 2



A Summary

A.1 Status

V&V Scientist	Beth Sundheim
V&V Date (YYYY-MM-DD)	2012.04.22
V&V Edition	1
V&V Disposition and Status	OK
V&V Charge Time	37.5039998

A.2 Comments