

V&V Reference Report

L2 ASCDS Version : 8.4.3

Observation 7145 - L2 Version 2
Chandra X-Ray Center

L2 Processing Date : Apr 3 2012

Contents

1	Front	2
2	OBI	3
2.1	OBI	3
2.1.1	Images	3
2.1.2	Bias	3
2.1.3	Parameters	4
2.1.4	Events	4
2.2	Compared Parameters	5
2.3	Aspect	6
2.4	Star Slots	9
2.4.1	Slot 3	9
2.4.2	Slot 4	10
2.4.3	Slot 5	11
2.4.4	Slot 6	12
2.4.5	Slot 7	13
2.5	FID Slots	14
2.5.1	Slot 0	14
2.5.2	Slot 1	15
2.5.3	Slot 2	16
A	Summary	17
A.1	Status	17
A.2	Comments	17

1 Front

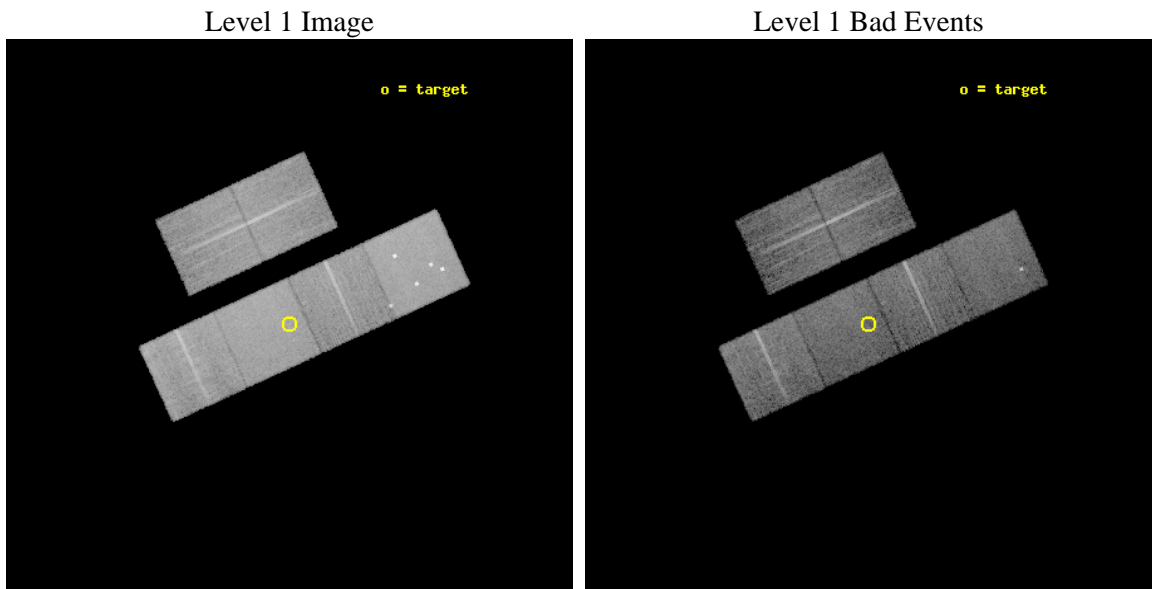
seq_num	600583	Sequence number
obs_id	7145	Observation id
title	Searching for accreting black holes in nuclear star clusters	Propo
observer	Dr Roberto Soria	Principal investigator
object	NGC1493	Source name
dtycycle	0	
cycle	P	events from which exps? Prim/Second/Both
ra_targ	59.365417	Observer's specified target RA [deg]
dec_targ	-46.210583	Observer's specified target Dec [deg]
ra_nom	59.364722575097	Nominal RA [deg]
dec_nom	-46.208548830913	Nominal Dec [deg]
roll_nom	155.39818196975	Nominal Roll [deg]
revision	2	Processing version of data
ontime	10156.799962163	Sum of GTIs [s]
livetime	10028.188445351	Livetime [s]
ontime2	10156.799962163	Sum of GTIs [s]
ontime3	10156.799962163	Sum of GTIs [s]
ontime5	10156.799962163	Sum of GTIs [s]
ontime6	10156.799962163	Sum of GTIs [s]
ontime7	10156.799962163	Sum of GTIs [s]
ontime8	10153.558971852	Sum of GTIs [s]
l2events	146461	Number of level 2 events



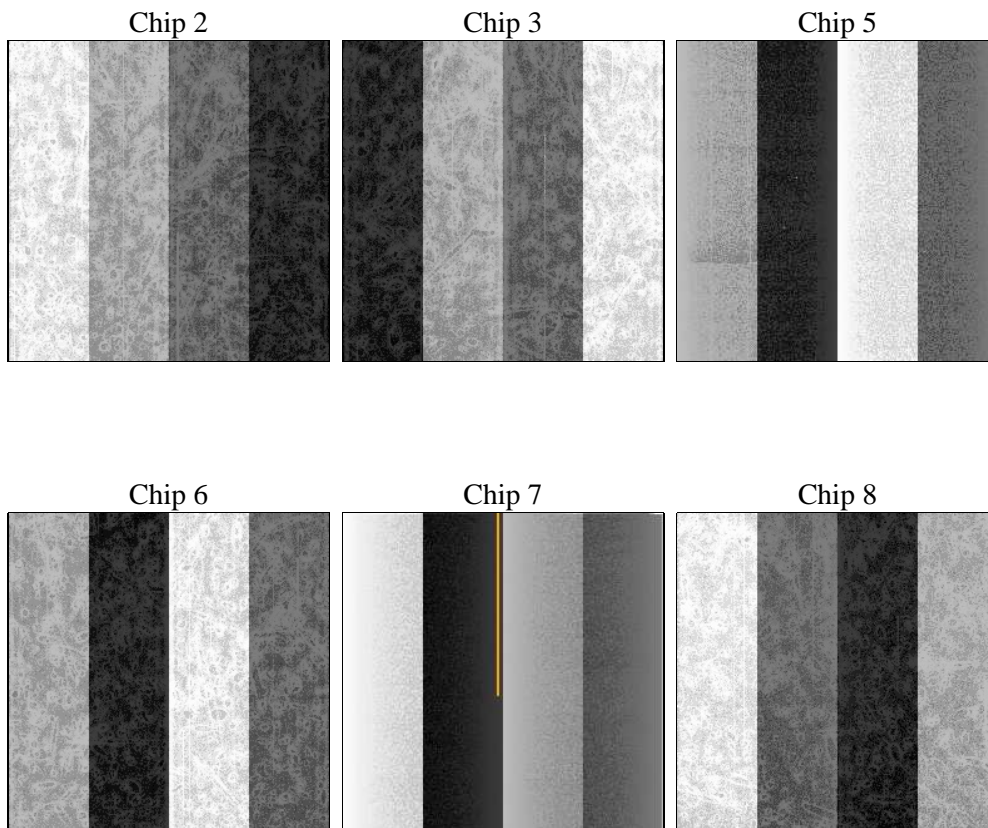
2 OBI

2.1 OBI

2.1.1 Images



2.1.2 Bias



2.1.3 Parameters

obi_num	0	Obi number	sched_exp_time	10000.000000	[s] Scheduled observation exposure time
ascdsver	8.4.3	Processing system revision	ontime	10156.799962163	Sum of GTIs [s]
caldbver	4.4.9	 	ontime2	10156.799962163	Sum of GTIs [s]
date	2012-04-03T11:52:18	Date and time of file creation	ontime3	10156.799962163	Sum of GTIs [s]
revision	2	Processing version of data	ontime5	10156.799962163	Sum of GTIs [s]
			ontime6	10156.799962163	Sum of GTIs [s]
			ontime7	10156.799962163	Sum of GTIs [s]
			ontime8	10153.558971852	Sum of GTIs [s]
			l1events	662835	Number of level 1 events

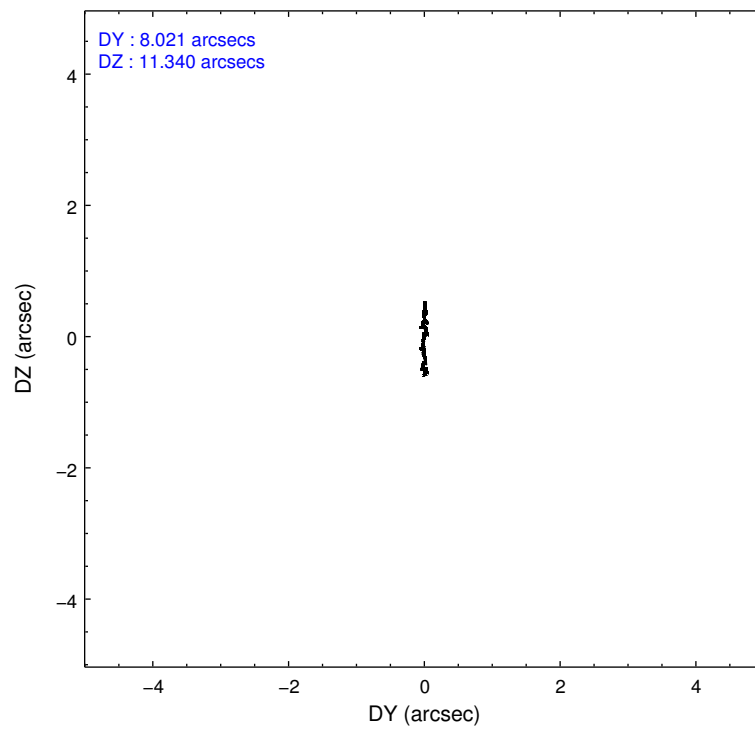
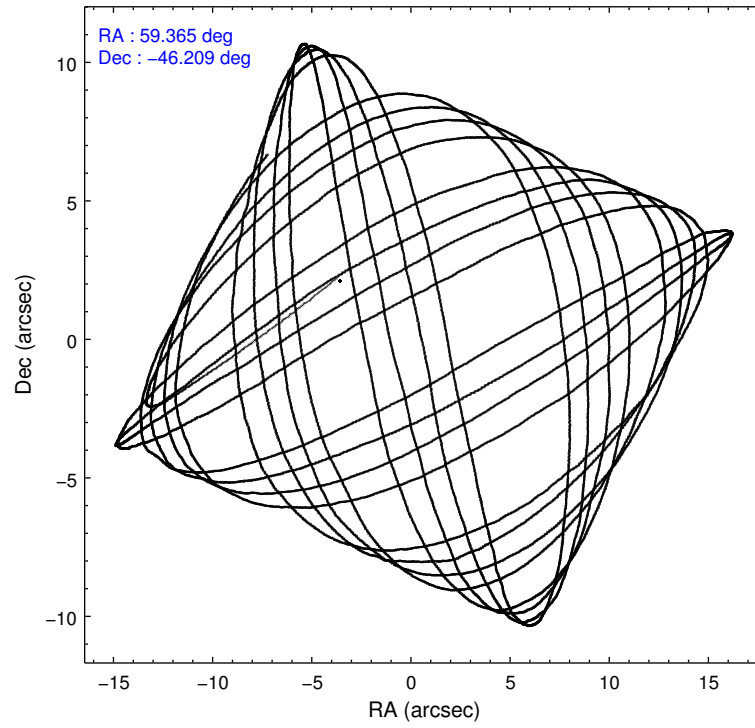
2.1.4 Events

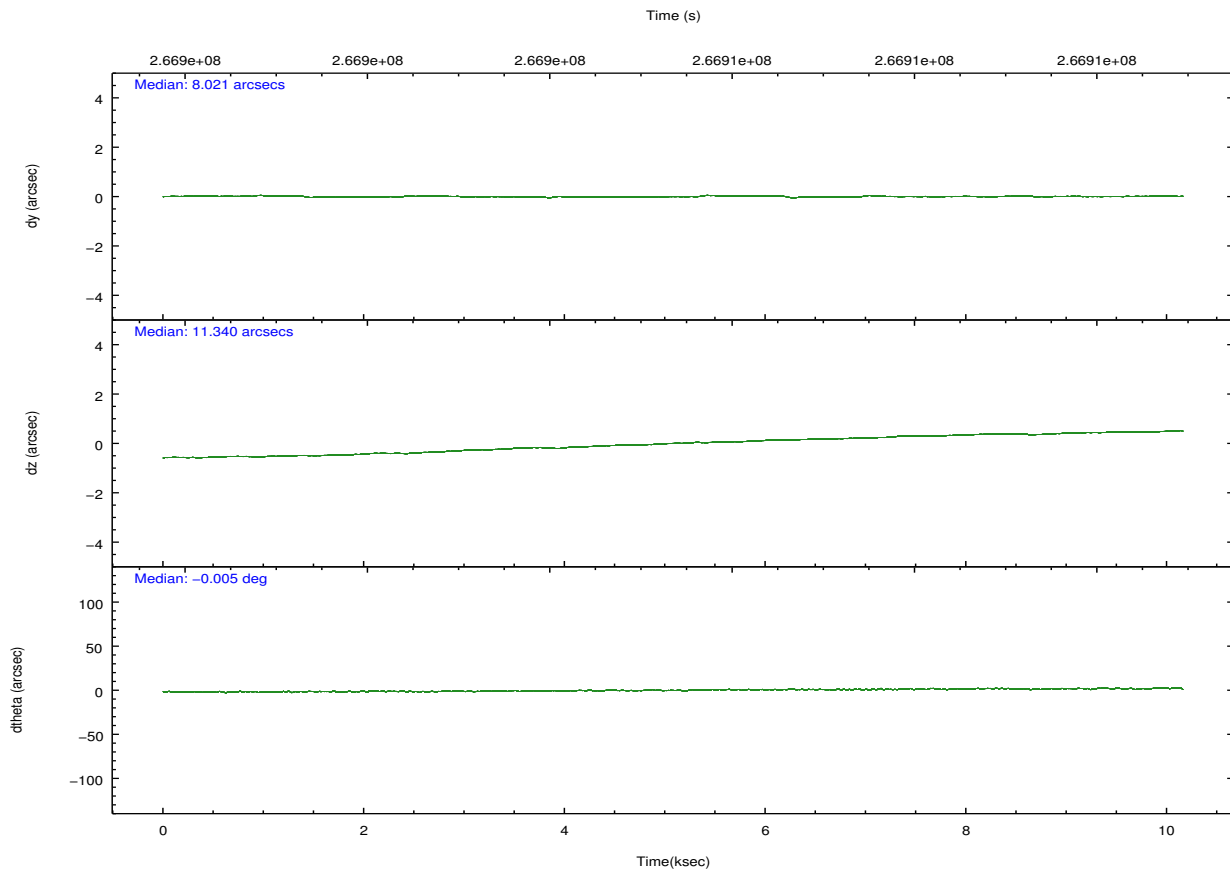
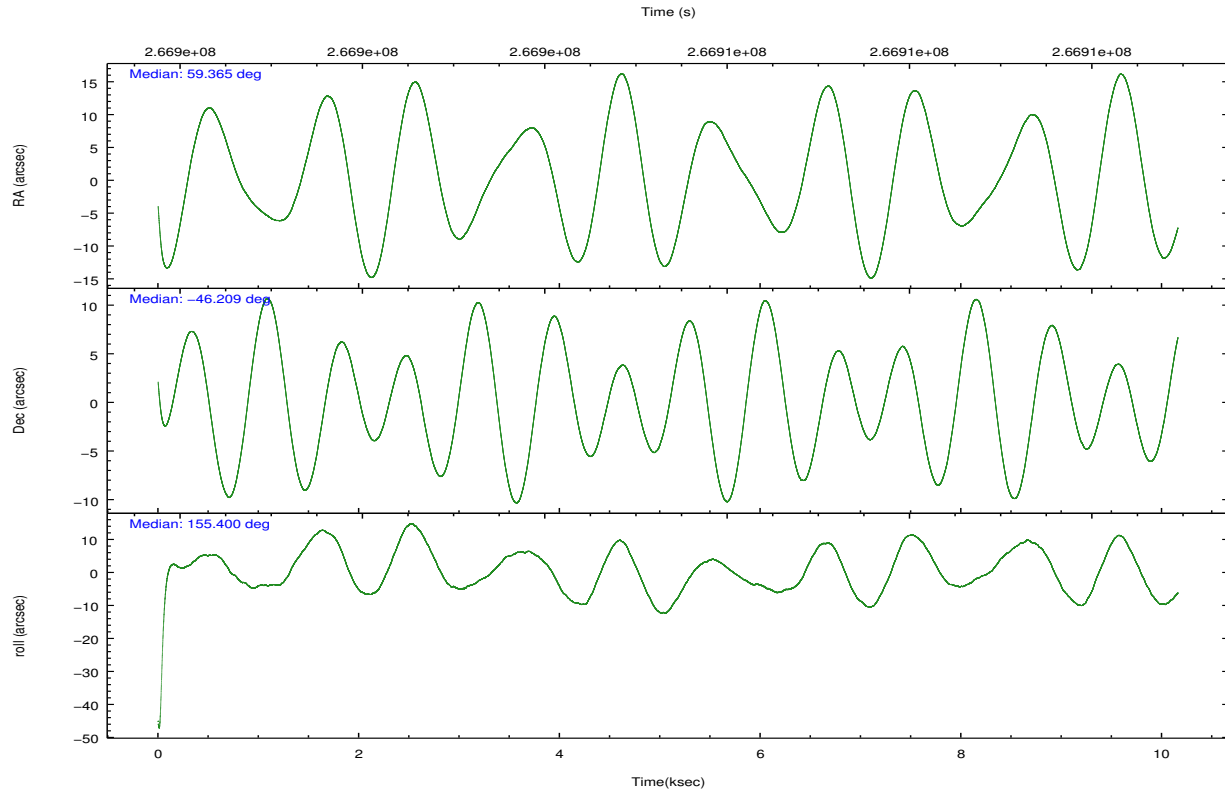
	ccd 2	ccd 3	ccd 5	ccd 6	ccd 7	ccd 8		ccd 2	ccd 3	ccd 5	ccd 6	ccd 7	ccd 8
level 1 events	95234	89285	146717	92518	124158	114923	grade 0 events	4766	4571	12917	4124	4553	7471
rejected events	84452	79041	76028	81834	72423	90889		5%	5%	8%	4%	3%	6%
rejected %	88%	88%	51%	88%	58%	79%	grade 1 events	73	53	1153	44	118	88
								0%	0%	0%	0%	0%	0%
							grade 2 events	2276	1990	19842	2372	10396	5397
								2%	2%	13%	2%	8%	4%
							grade 3 events	990	964	2331	1003	4436	2468
								1%	1%	1%	1%	3%	2%
							grade 4 events	1053	974	2203	1023	4457	2385
								1%	1%	1%	1%	3%	2%
							grade 5 events	3477	4064	9563	4238	11591	5508
								3%	4%	6%	4%	9%	4%
							grade 6 events	1765	1808	33789	2215	28212	6492
								1%	2%	23%	2%	22%	5%
							grade 7 events	80834	74861	64919	77499	60395	85114
								84%	83%	44%	83%	48%	74%

2.2 Compared Parameters

Parameter	Planned	Actual	Parameter	Planned	Actual
Instrument	ACIS	ACIS	Obspar format version number	7	7
Detector	ACIS-235678	ACIS-235678	Obspar file type	PREDICTED	ACTUAL
Grating	NONE	NONE	Obspar update status	NONE	UPDATED
Data mode	FAINT	FAINT	Number of optional ACIS chips dropped	0	0
Observation mode	POINTING	POINTING	On-chip summing requested	N	N
[deg] Pointing RA	59.403902	59.36472257509669	Subarray requested	NONE	NONE
[deg] Pointing Dec	-46.205609	-46.20854883091253	Alternating exposures requested	N	N
[deg] Pointing Roll	155.269908	155.3981819697465	[s] Primary exposure time	0.000000	3.2
[mm] SIM focus pos	-0.684267	-0.6828225247311905			
[mm] SIM defocus	0	0.001444936568705701			
[mm] SIM translation stage pos	-190.132523	-190.1400660498719			
[mm] SIM translation stage offset	0	0.00754346686406393			
[s] Observation start time (MET)	266900436.184000	266899346.05041			
Observation start date	2006-06-17T02:59:31	2006-06-17T02:42:26			
[s] Observation end time (MET)	266910436.184000	266911283.71346			
Observation end date	2006-06-17T05:46:11	2006-06-17T06:01:23			
Read mode	TIMED	TIMED			

2.3 Aspect



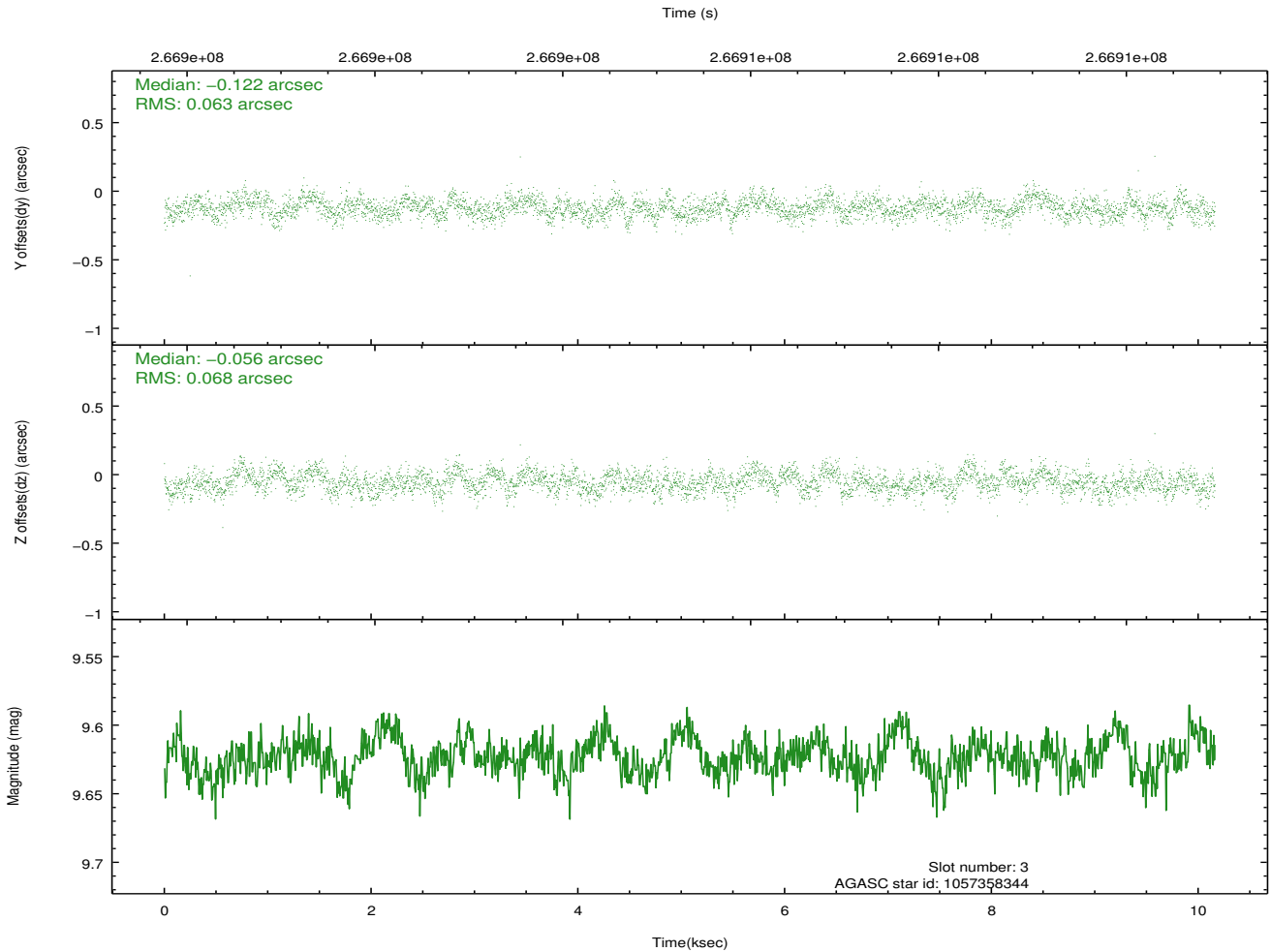
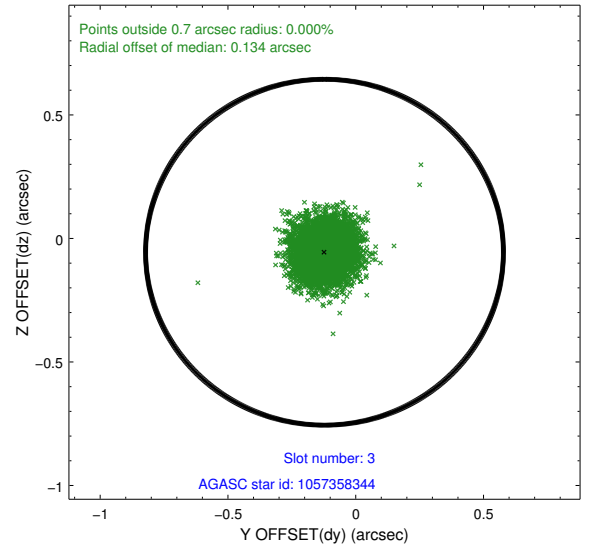
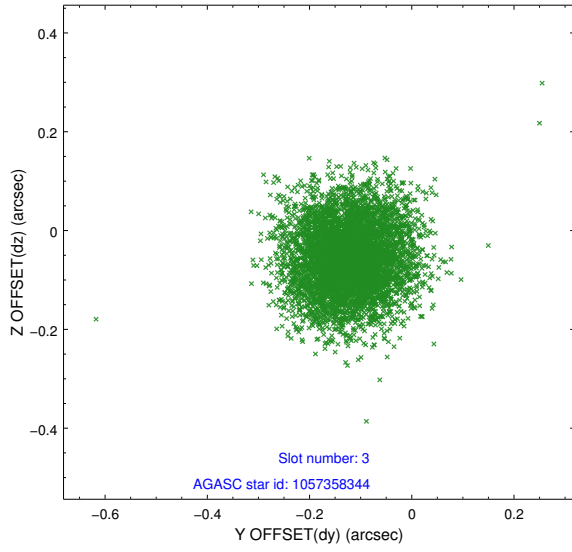


Slot Statistics

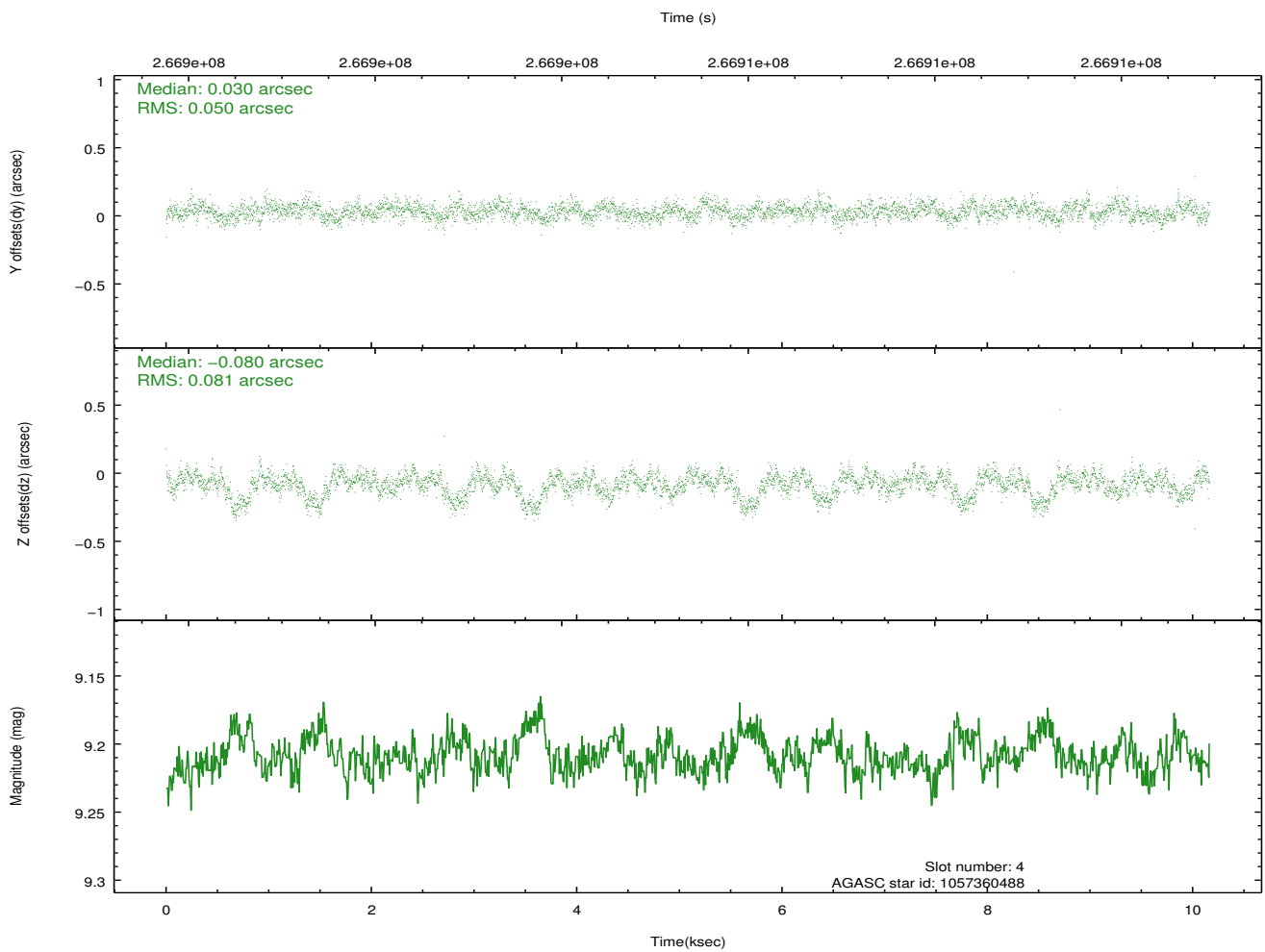
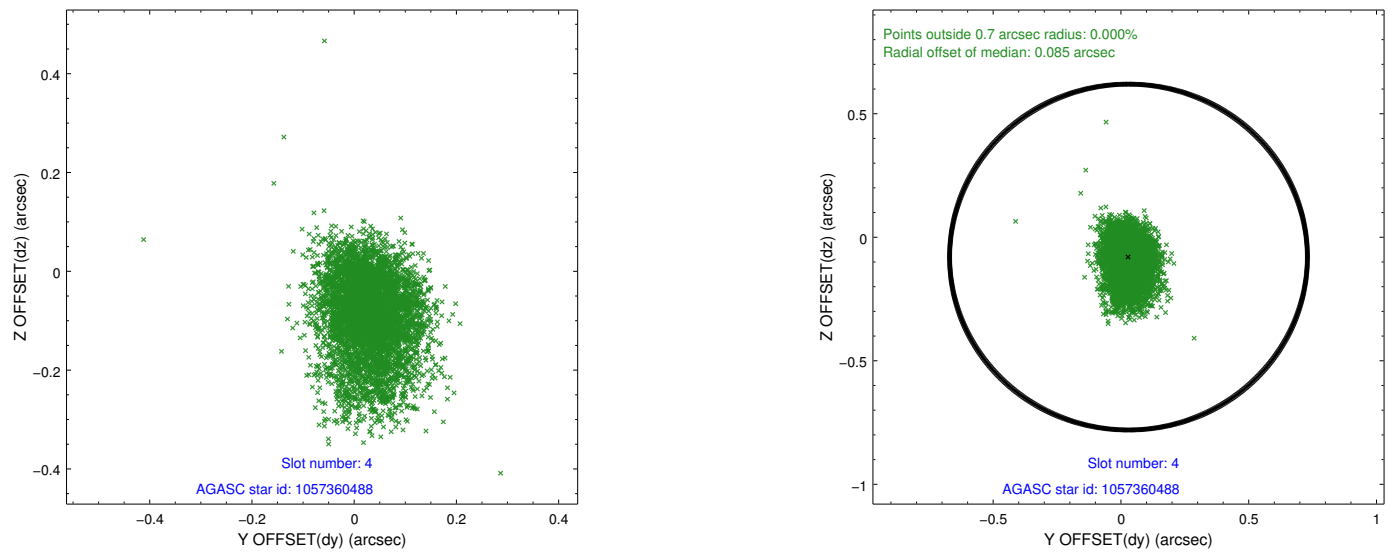
slot	status	id	mag	n_pts	med_dy	med_dz	dr1	dr2	ra	dec	mean_y	mean_z
0	FID	ACIS-S-2	7.11	2479	-0.038	-0.028	0.011	0.016	0.000000	0.000000	-760.81	-1732.63
1	FID	ACIS-S-4	7.21	2479	0.129	0.026	0.010	0.015	0.000000	0.000000	2152.37	175.41
2	FID	ACIS-S-5	7.24	2478	-0.122	0.010	0.009	0.015	0.000000	0.000000	-1813.10	169.60
3	GUIDE	1057358344	9.62	4952	-0.122	-0.056	0.100	0.159	59.052662	-46.369285	545.28	901.76
4	GUIDE	1057360488	9.21	4952	0.030	-0.080	0.097	0.174	58.910481	-46.295914	977.53	811.96
5	GUIDE	1057361952	9.27	4953	0.045	0.140	0.087	0.137	59.877154	-46.149972	-989.72	-672.48
6	GUIDE	1057370824	9.43	4934	-0.016	0.025	0.107	0.178	58.792505	-45.696085	2161.30	-1017.75
7	GUIDE	1057500912	7.13	4957	0.061	-0.015	0.063	0.102	60.323447	-46.137342	-1985.47	-1170.93

2.4 Star Slots

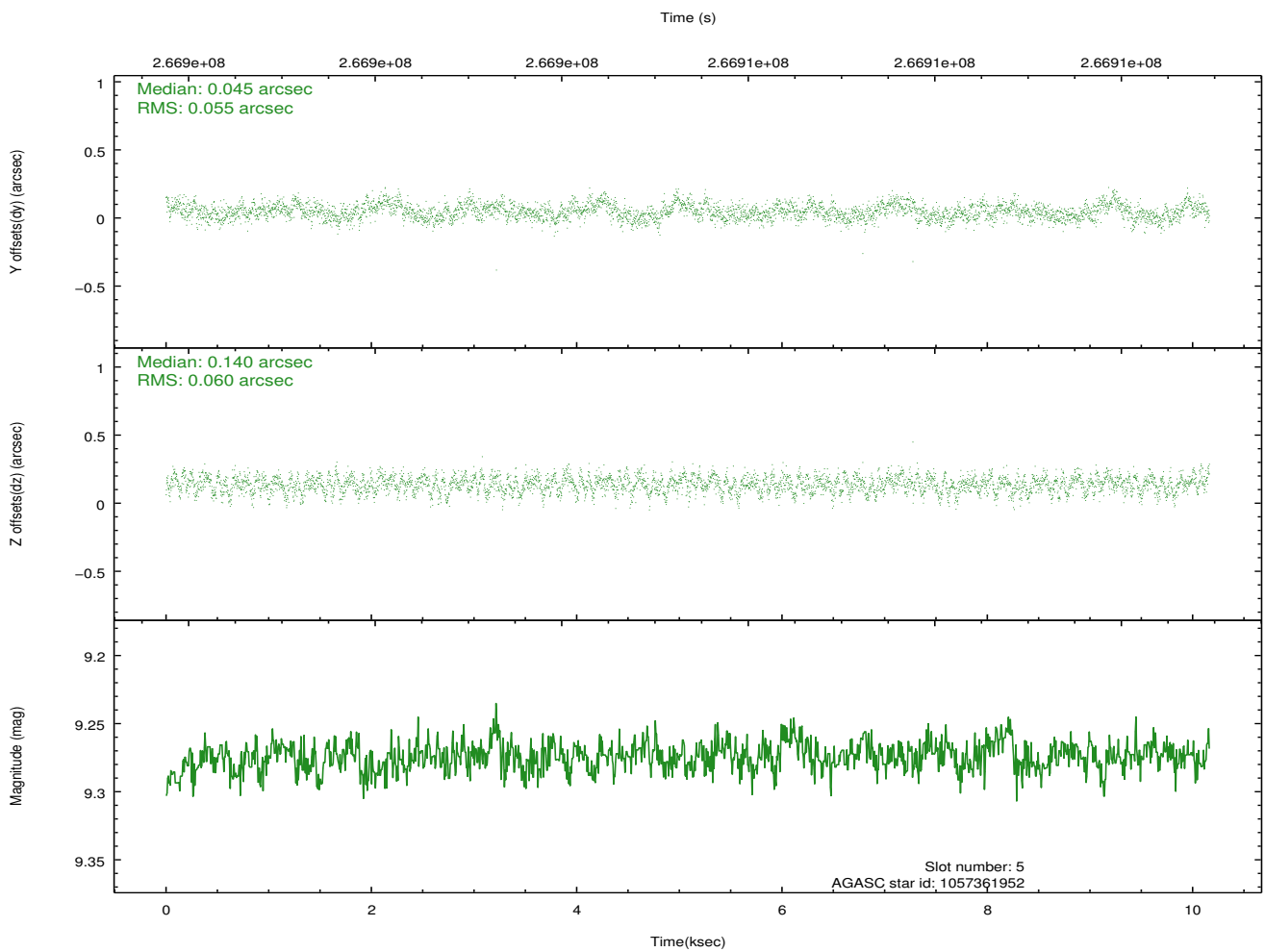
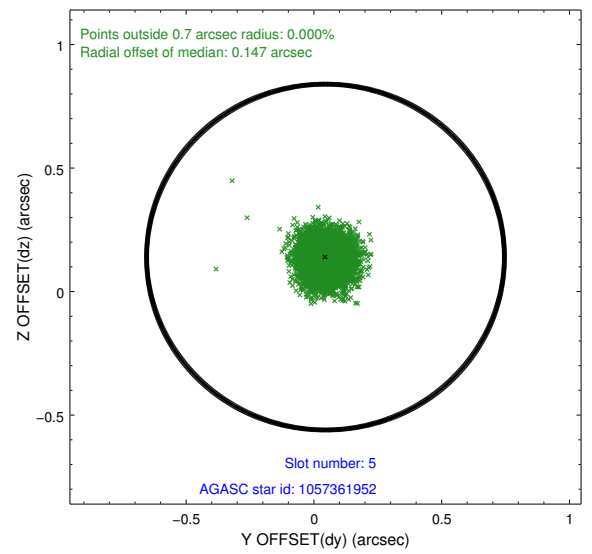
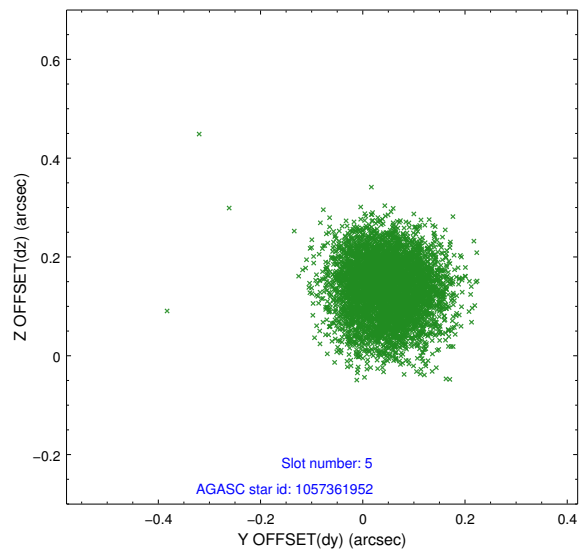
2.4.1 Slot 3



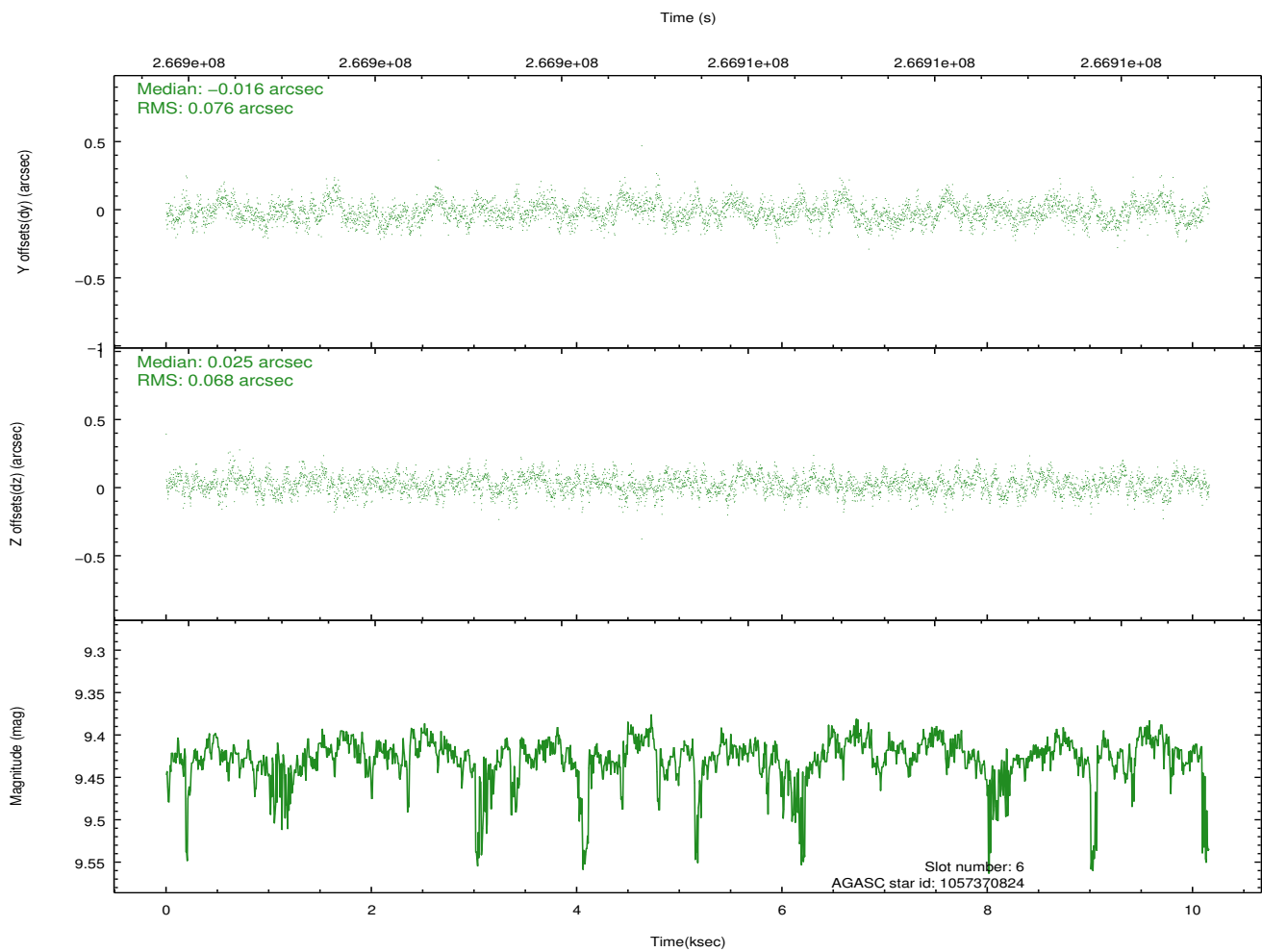
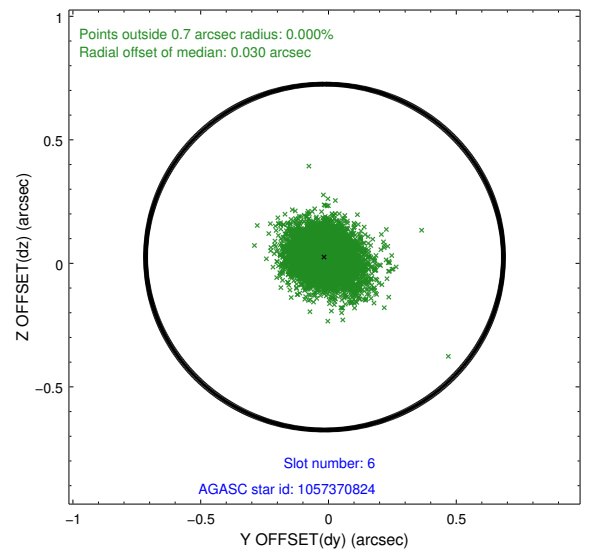
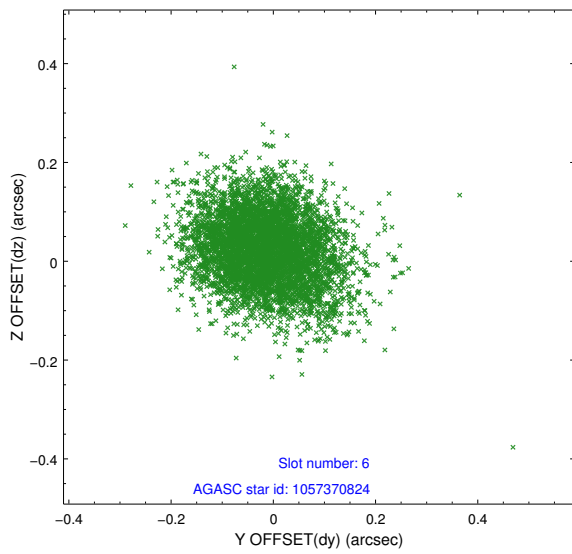
2.4.2 Slot 4



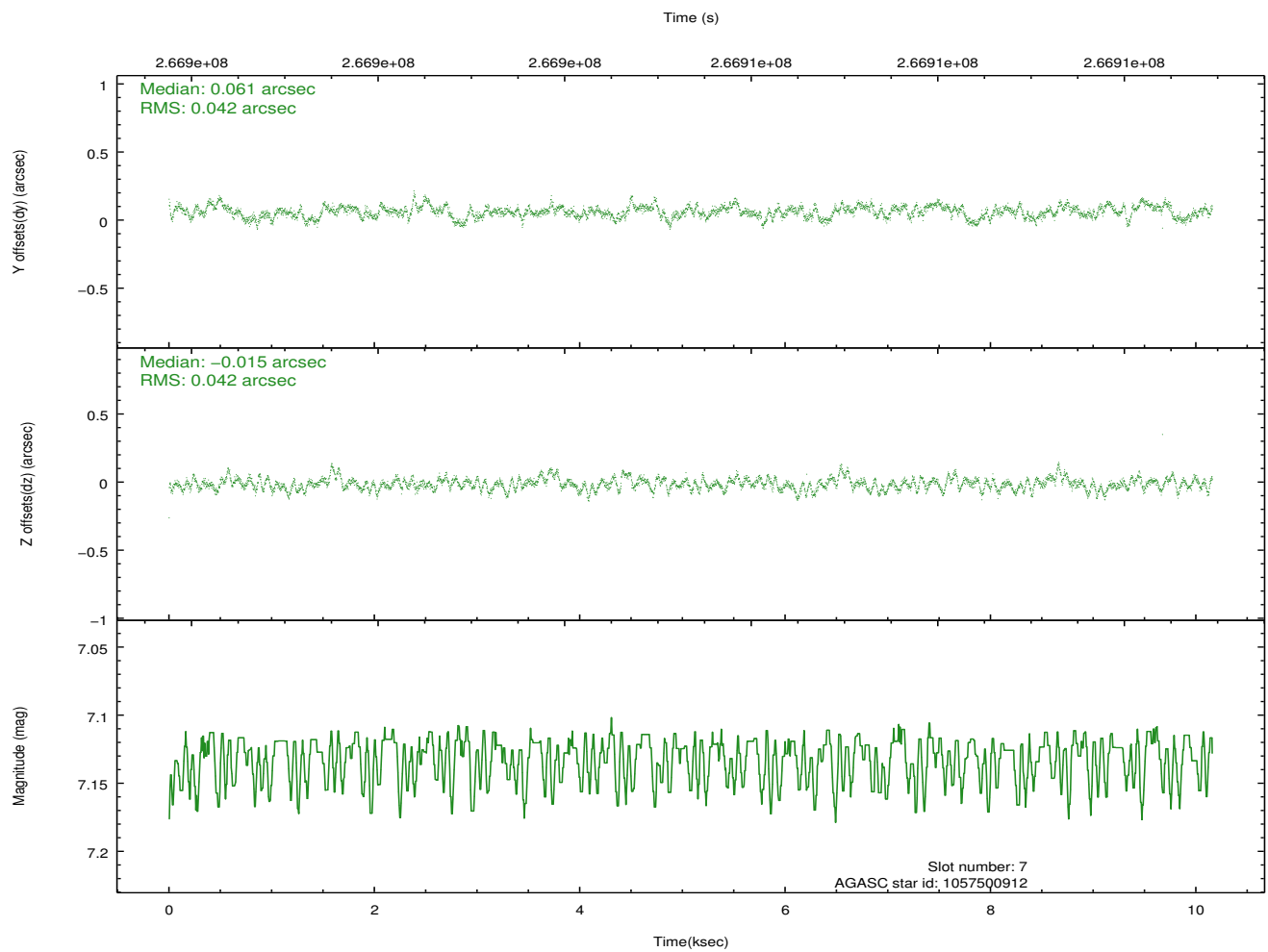
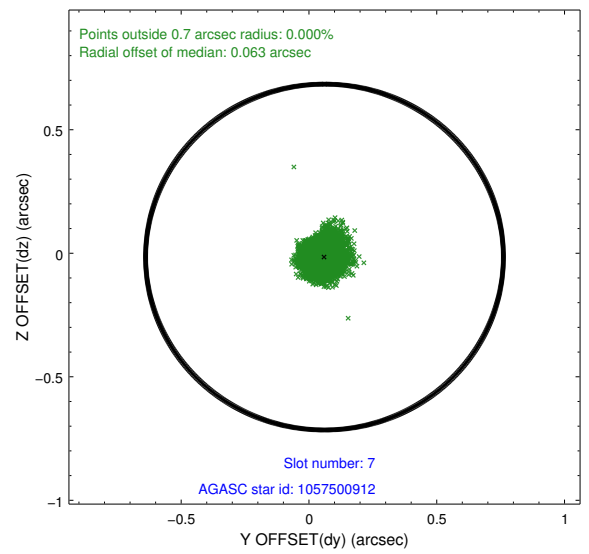
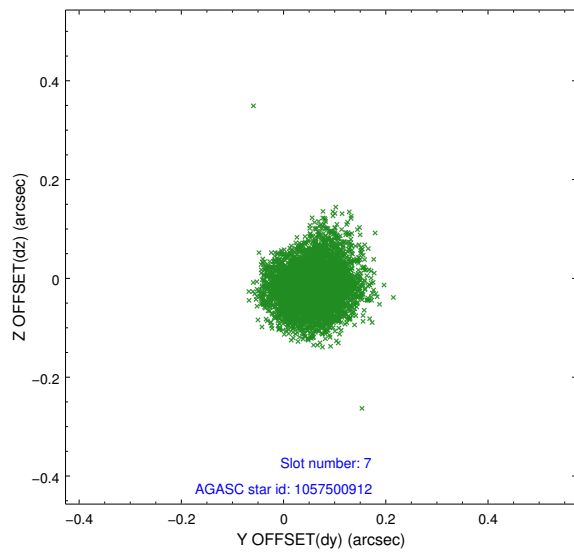
2.4.3 Slot 5



2.4.4 Slot 6

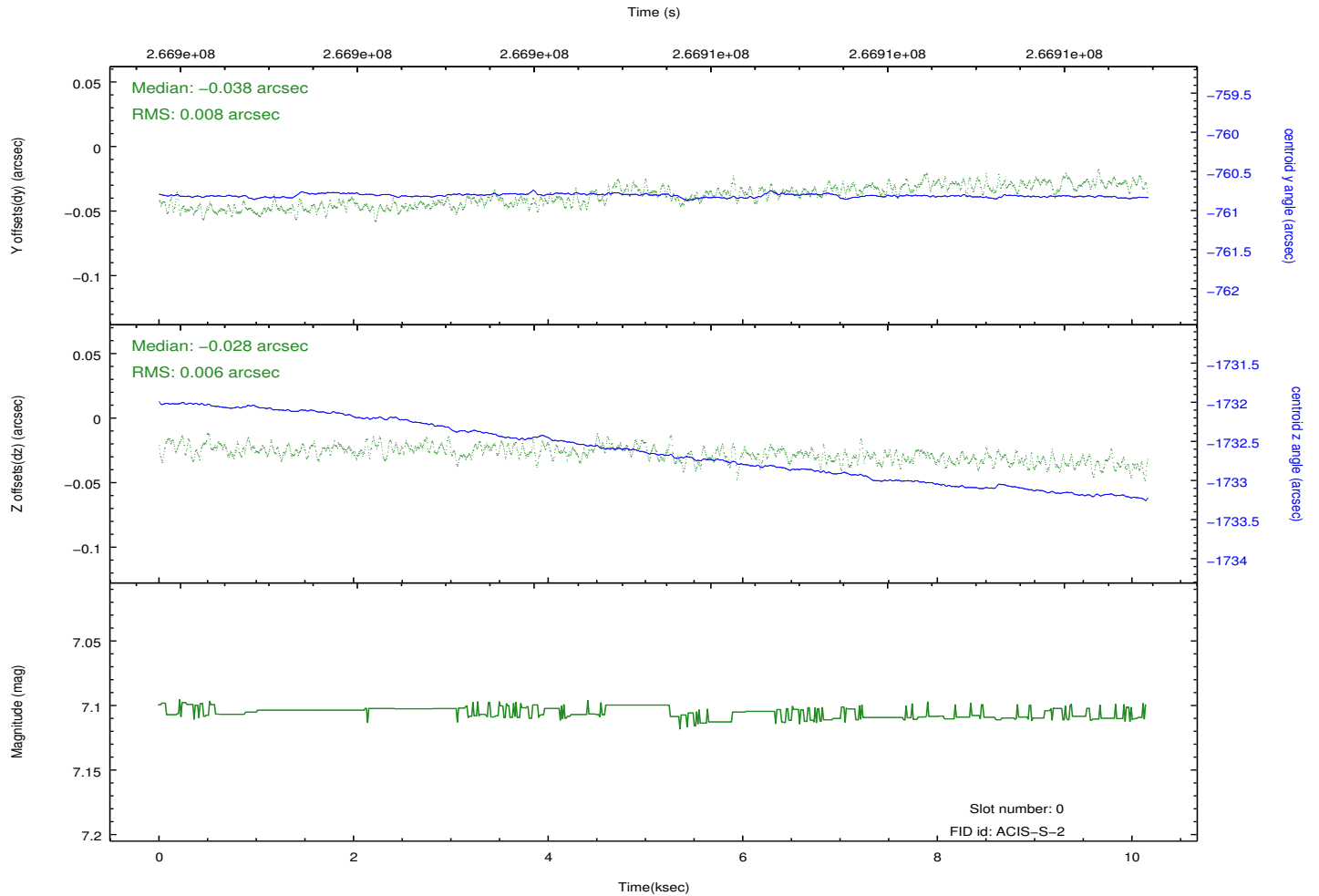
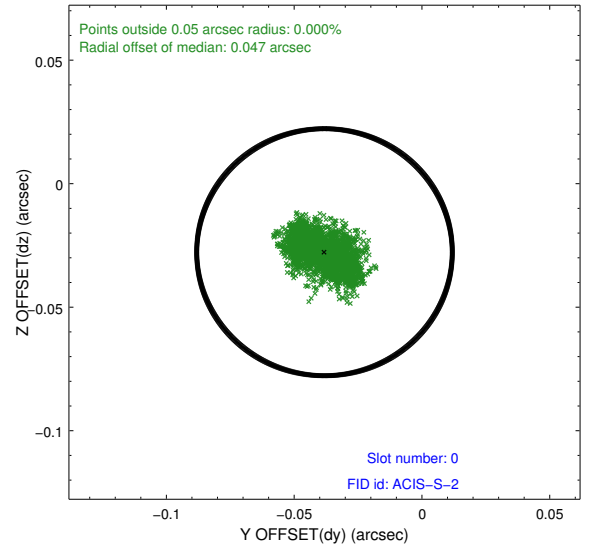
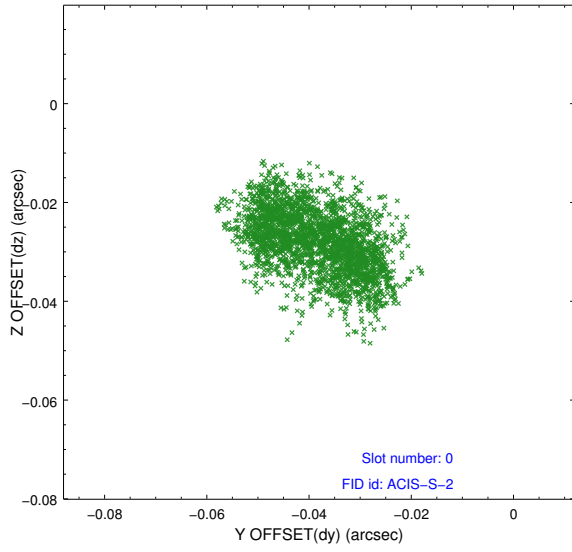


2.4.5 Slot 7

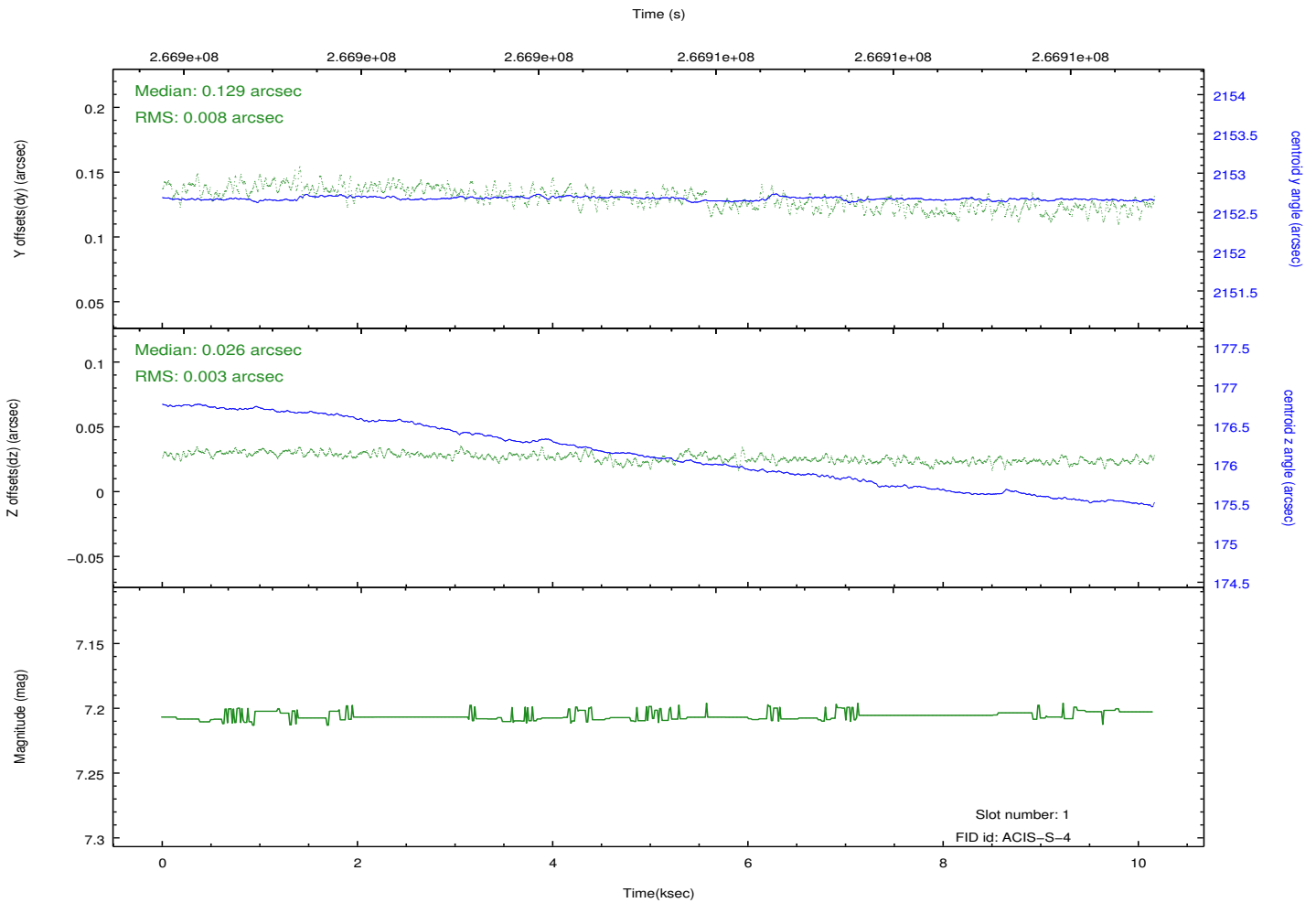
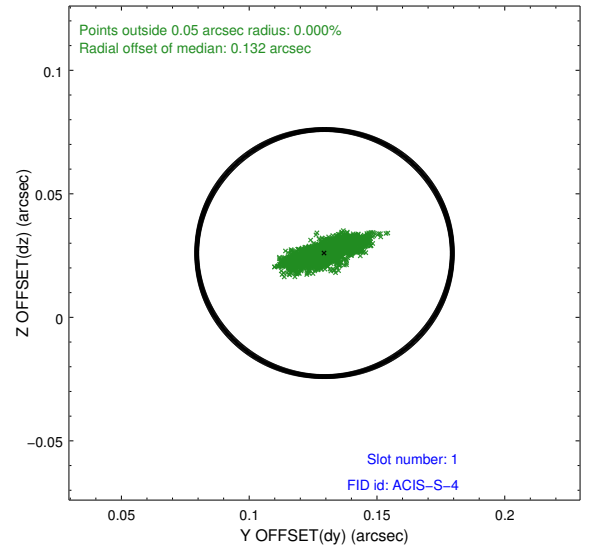
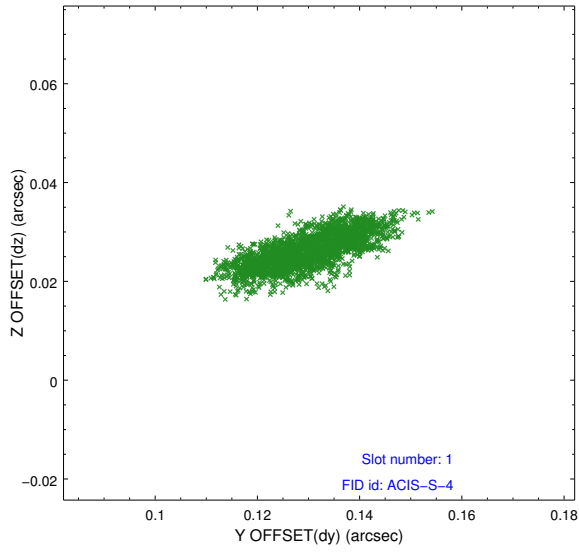


2.5 FID Slots

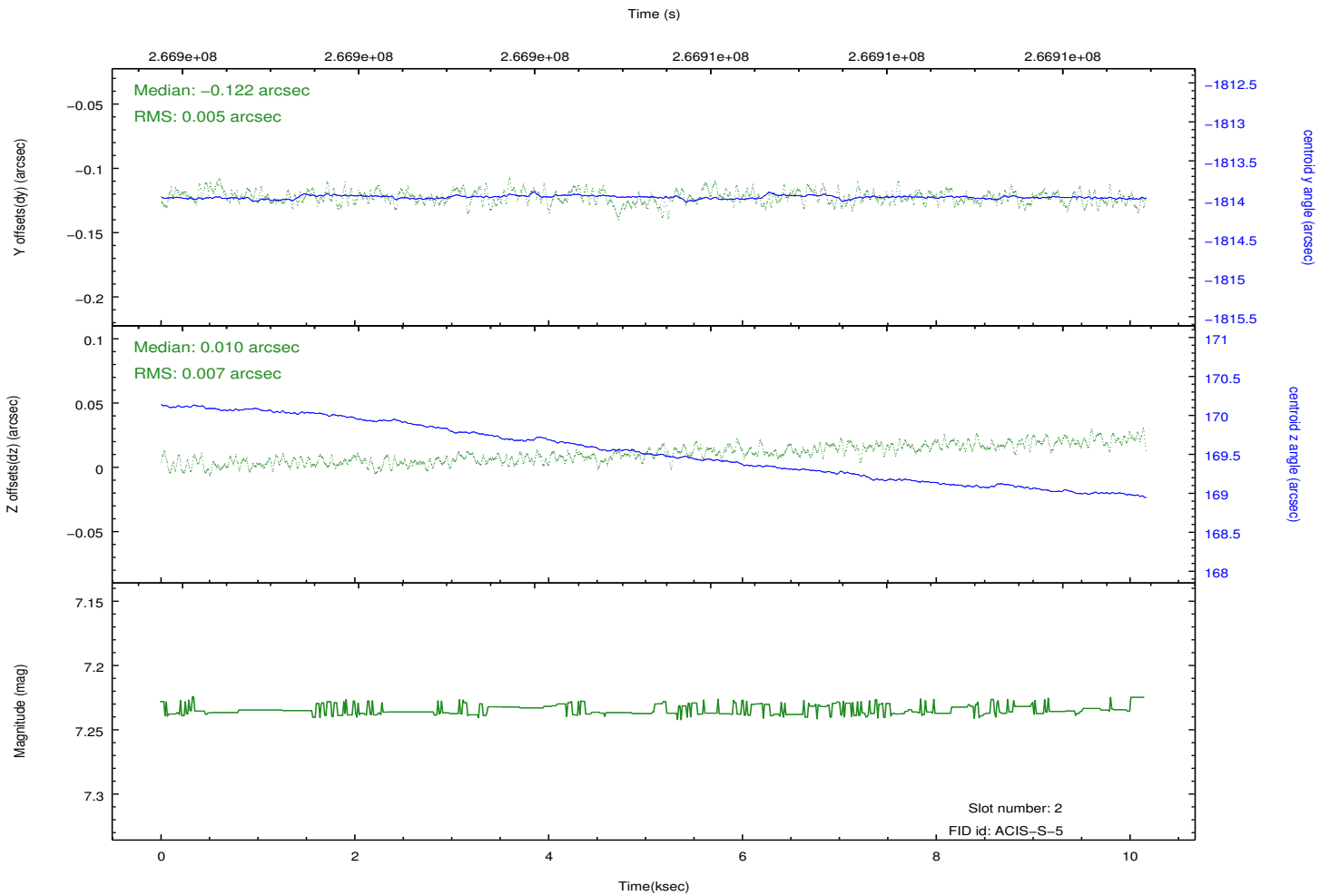
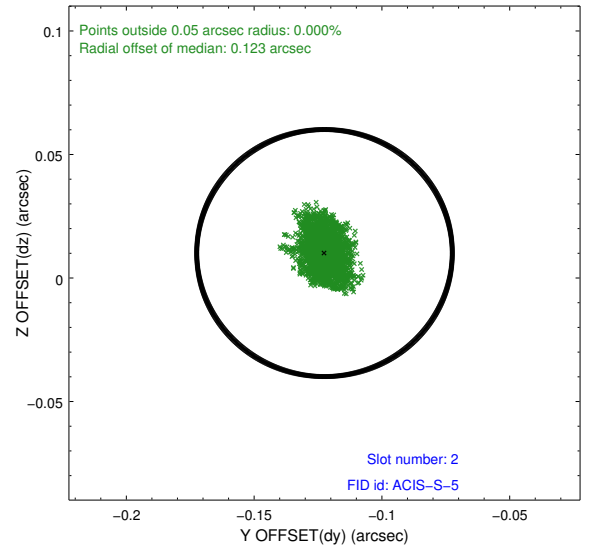
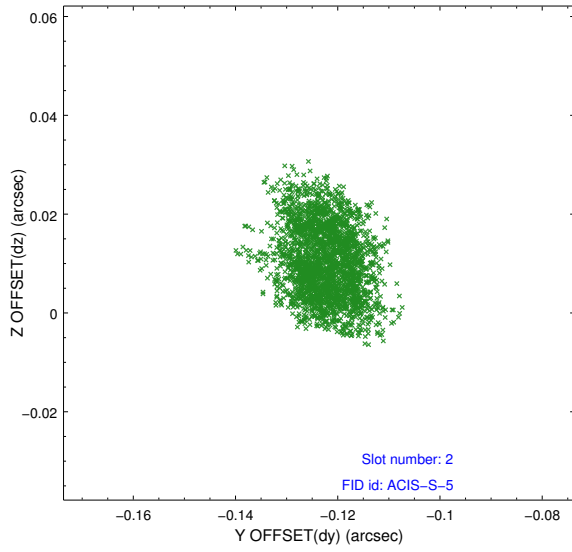
2.5.1 Slot 0



2.5.2 Slot 1



2.5.3 Slot 2



A Summary

A.1 Status

V&V Scientist	Beth Sundheim
V&V Date (YYYY-MM-DD)	2012.04.04
V&V Edition	1
V&V Disposition and Status	OK
V&V Charge Time	10.1567999

A.2 Comments