

V&V Reference Report

L2 ASCDS Version : 8.4.3

Observation 7265 - L2 Version 2
Chandra X-Ray Center

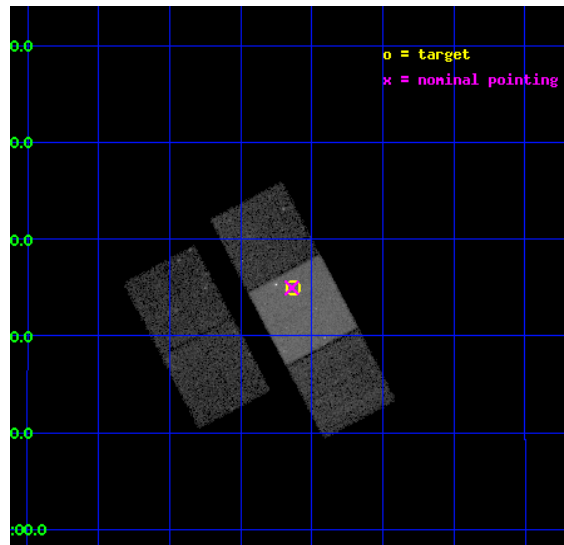
L2 Processing Date : Mar 23 2012

Contents

1	Front	2
2	OBI	3
2.1	OBI	3
2.1.1	Images	3
2.1.2	Bias	3
2.1.3	Parameters	4
2.1.4	Events	4
2.2	Compared Parameters	5
2.3	Aspect	6
2.4	Star Slots	9
2.4.1	Slot 3	9
2.4.2	Slot 4	10
2.4.3	Slot 5	11
2.4.4	Slot 6	12
2.4.5	Slot 7	13
2.5	FID Slots	14
2.5.1	Slot 0	14
2.5.2	Slot 1	15
2.5.3	Slot 2	16
A	Summary	17
A.1	Status	17
A.2	Comments	17

1 Front

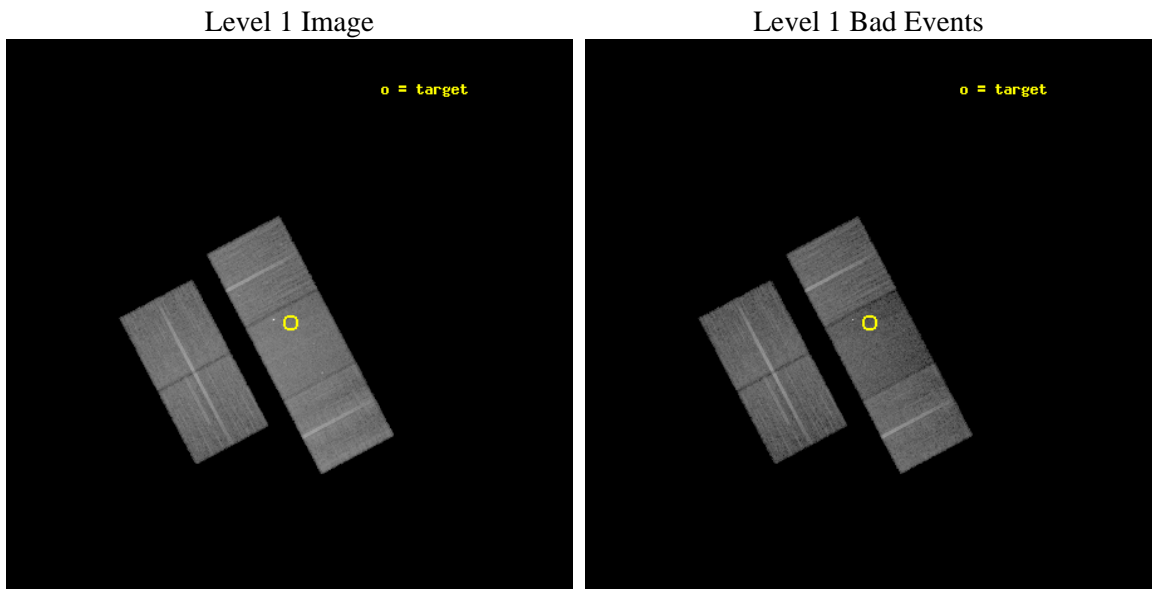
seq_num	701260	Sequence number
obs_id	7265	Observation id
title	Particle acceleration and the nature of multiple hotspots in FR II radio galaxies	Proposal title
observer	Dr. Martin Hardcastle	Principal investigator
object	3C227	Source name
dtcycle	0	
cycle	P	events from which exps? Prim/Second/Both
ra_targ	146.907917	Observer's specified target RA [deg]
dec_targ	7.415972	Observer's specified target Dec [deg]
ra_nom	146.90999010272	Nominal RA [deg]
dec_nom	7.4163043628476	Nominal Dec [deg]
roll_nom	62.156348939042	Nominal Roll [deg]
revision	2	Processing version of data
ontime	20106.599961311	Sum of GTIs [s]
livetime	19843.892430553	Livetime [s]
ontime2	20106.599961311	Sum of GTIs [s]
ontime3	20103.458981037	Sum of GTIs [s]
ontime6	20100.317970902	Sum of GTIs [s]
ontime7	20106.599961311	Sum of GTIs [s]
ontime8	20106.599961311	Sum of GTIs [s]
l2events	121208	Number of level 2 events



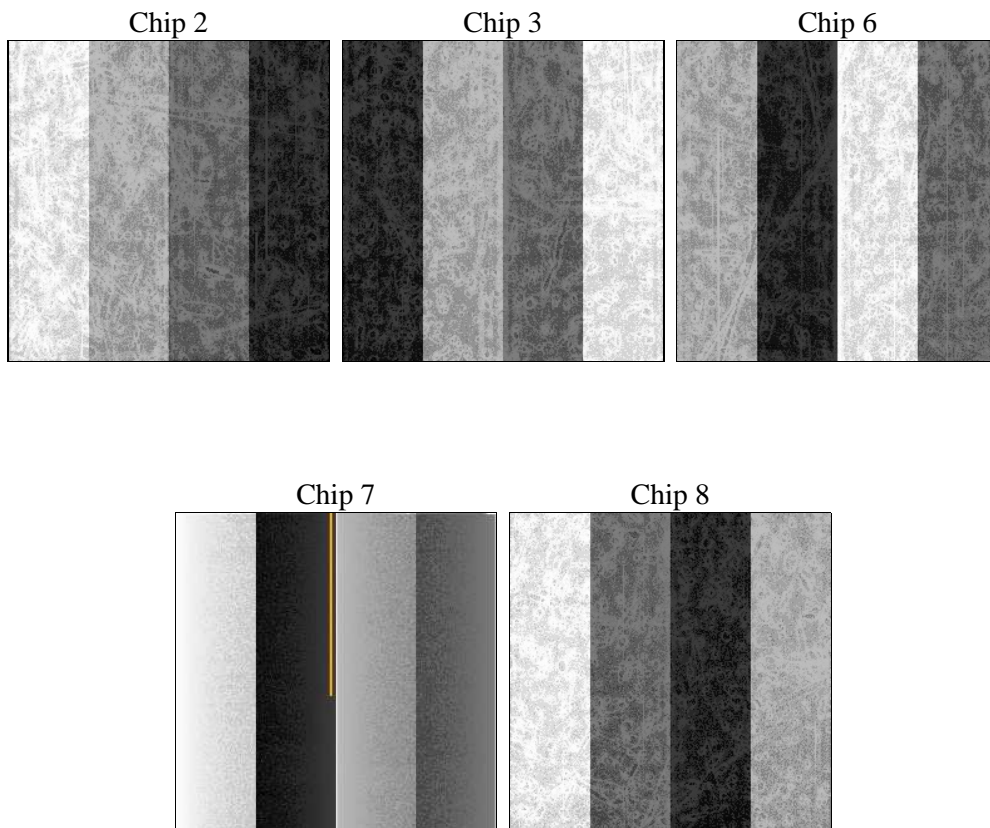
2 OBI

2.1 OBI

2.1.1 Images



2.1.2 Bias



2.1.3 Parameters

obi_num	0	Obi number	sched_exp_time	19988.222000	[s] Scheduled observation exposure time
ascdsver	8.4.3	Processing system revision	ontime	20106.599961311	Sum of GTIs [s]
caldbver	4.4.8	 	ontime2	20106.599961311	Sum of GTIs [s]
date	2012-03-23T14:24:57	Date and time of file creation	ontime3	20103.458981037	Sum of GTIs [s]
revision	2	Processing version of data	ontime6	20100.317970902	Sum of GTIs [s]
			ontime7	20106.599961311	Sum of GTIs [s]
			ontime8	20106.599961311	Sum of GTIs [s]
			l1events	820623	Number of level 1 events

2.1.4 Events

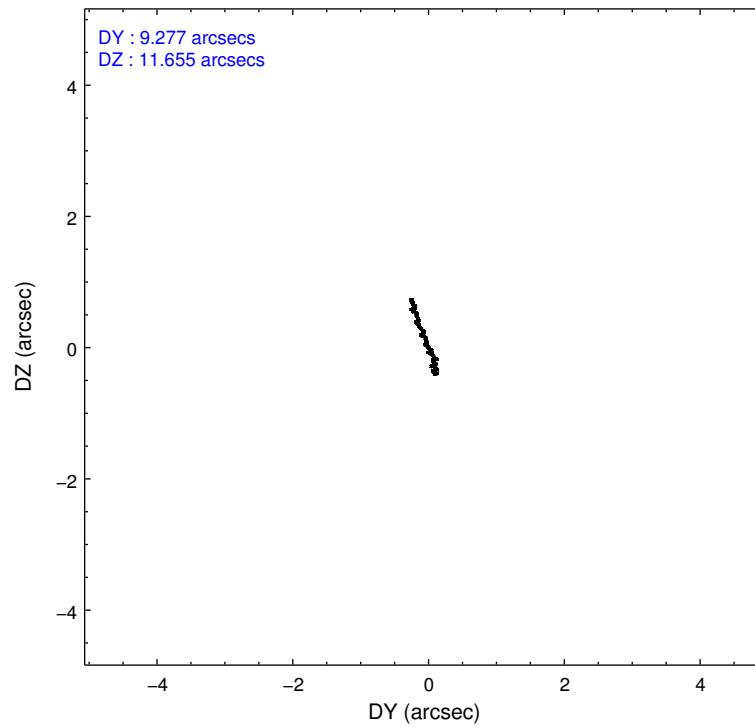
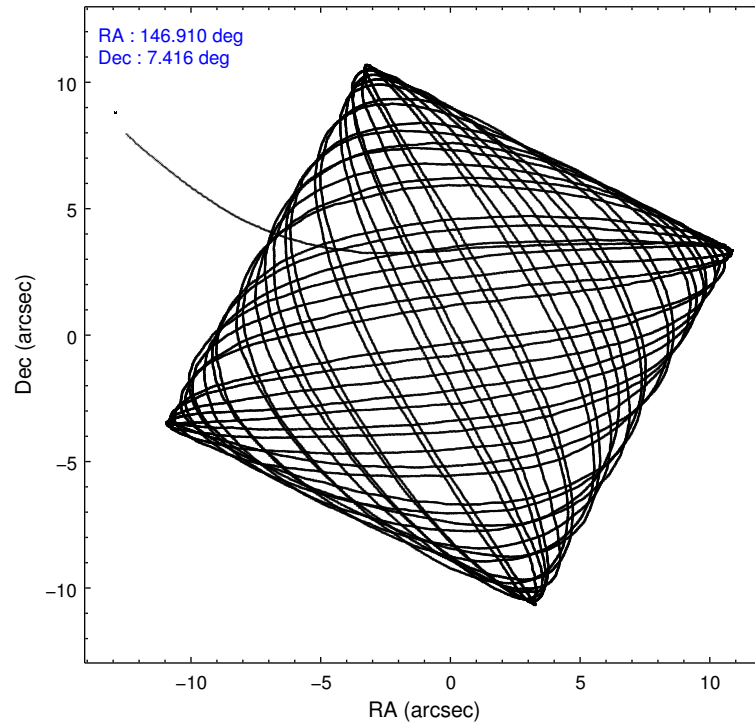
	ccd 2	ccd 3	ccd 6	ccd 7	ccd 8
level 1 events	155109	146443	157745	172193	189133
rejected events	142084	133976	143245	97870	149008
rejected %	91%	91%	90%	56%	78%

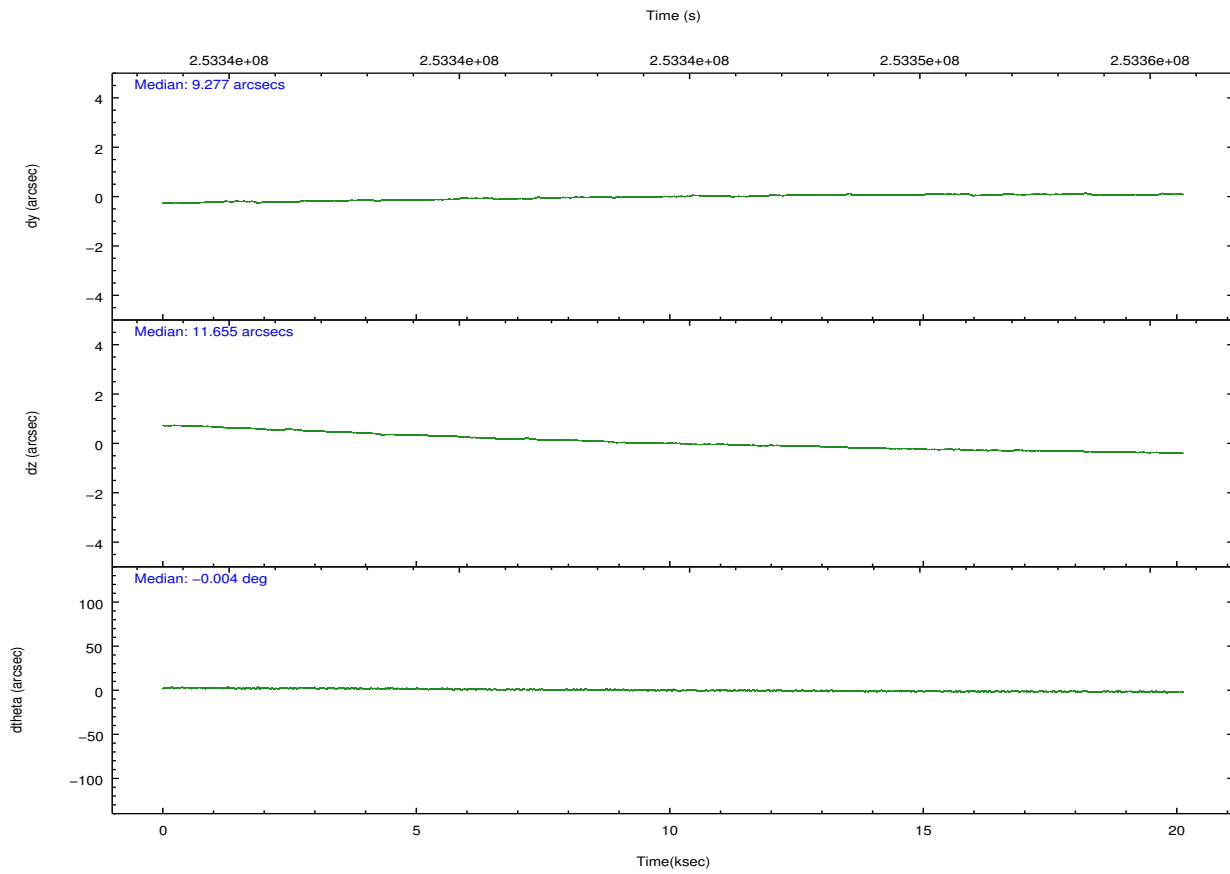
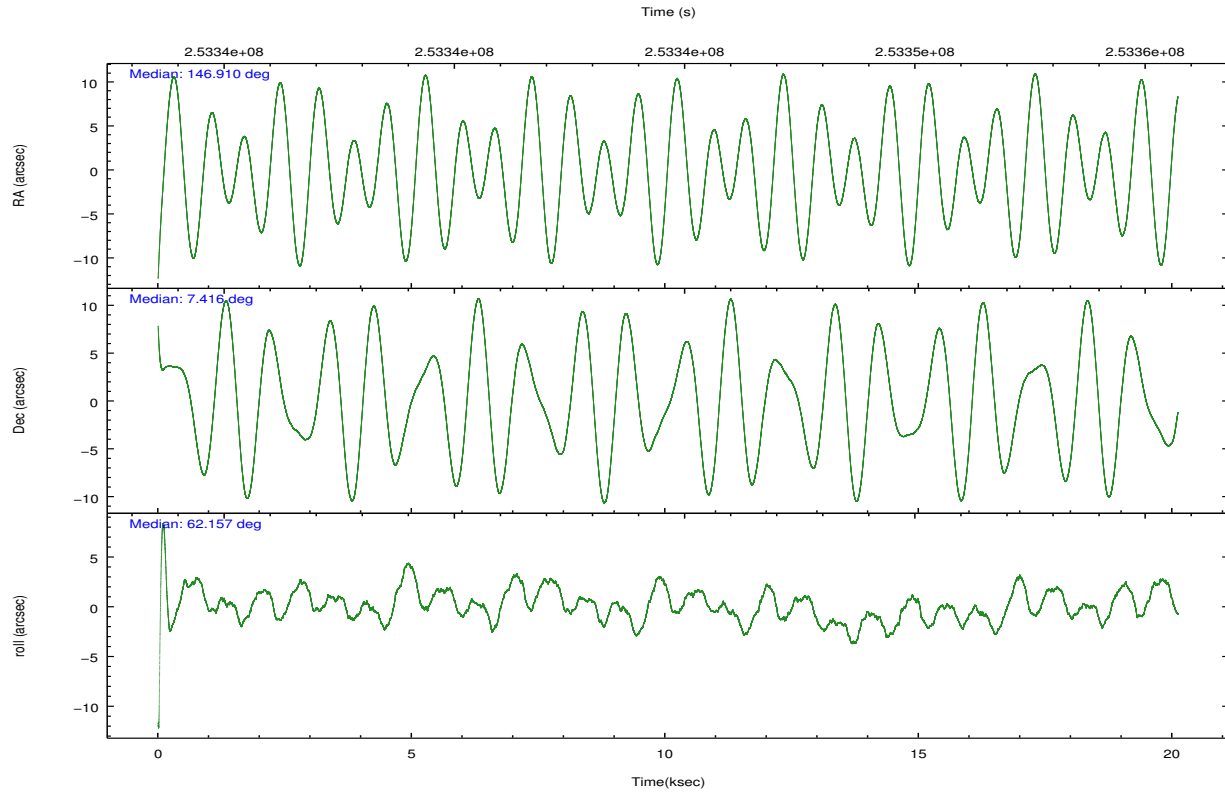
	ccd 2	ccd 3	ccd 6	ccd 7	ccd 8
grade 0 events	5075	4708	5558	7578	13348
	3%	3%	3%	4%	7%
grade 1 events	70	73	87	223	151
	0%	0%	0%	0%	0%
grade 2 events	3318	2887	3407	16281	9782
	2%	1%	2%	9%	5%
grade 3 events	1547	1586	1731	7553	4955
	0%	1%	1%	4%	2%
grade 4 events	1639	1607	1652	7580	4318
	1%	1%	1%	4%	2%
grade 5 events	4670	5813	6117	17774	8604
	3%	3%	3%	10%	4%
grade 6 events	2591	2731	3432	41399	11304
	1%	1%	2%	24%	5%
grade 7 events	136199	127038	135761	73805	136671
	87%	86%	86%	42%	72%

2.2 Compared Parameters

Parameter	Planned	Actual	Parameter	Planned	Actual
Instrument	ACIS	ACIS	Obspar format version number	7	7
Detector	ACIS-23678	ACIS-23678	Obspar file type	PREDICTED	ACTUAL
Grating	NONE	NONE	Obspar update status	NONE	UPDATED
Data mode	VFAINT	VFAINT	Number of optional ACIS chips dropped	0	0
Observation mode	POINTING	POINTING	On-chip summing requested	N	N
[deg] Pointing RA	146.911395	146.9099901027217	Subarray requested	NONE	NONE
[deg] Pointing Dec	7.389095	7.416304362847616	Alternating exposures requested	N	N
[deg] Pointing Roll	61.999552	62.15634893904168	[s] Primary exposure time	0.000000	3.1
[mm] SIM focus pos	-0.684267	-0.6828225247311905			
[mm] SIM defocus	0	0.001444936568705701			
[mm] SIM translation stage pos	-190.132523	-190.1400660498719			
[mm] SIM translation stage offset	0	0.00754346686406393			
[s] Observation start time (MET)	253334709.184000	253332852.85636			
Observation start date	2006-01-11T02:44:04	2006-01-11T02:14:12			
[s] Observation end time (MET)	253354697.184000	253354924.69488			
Observation end date	2006-01-11T08:17:12	2006-01-11T08:22:04			
Read mode	TIMED	TIMED			

2.3 Aspect





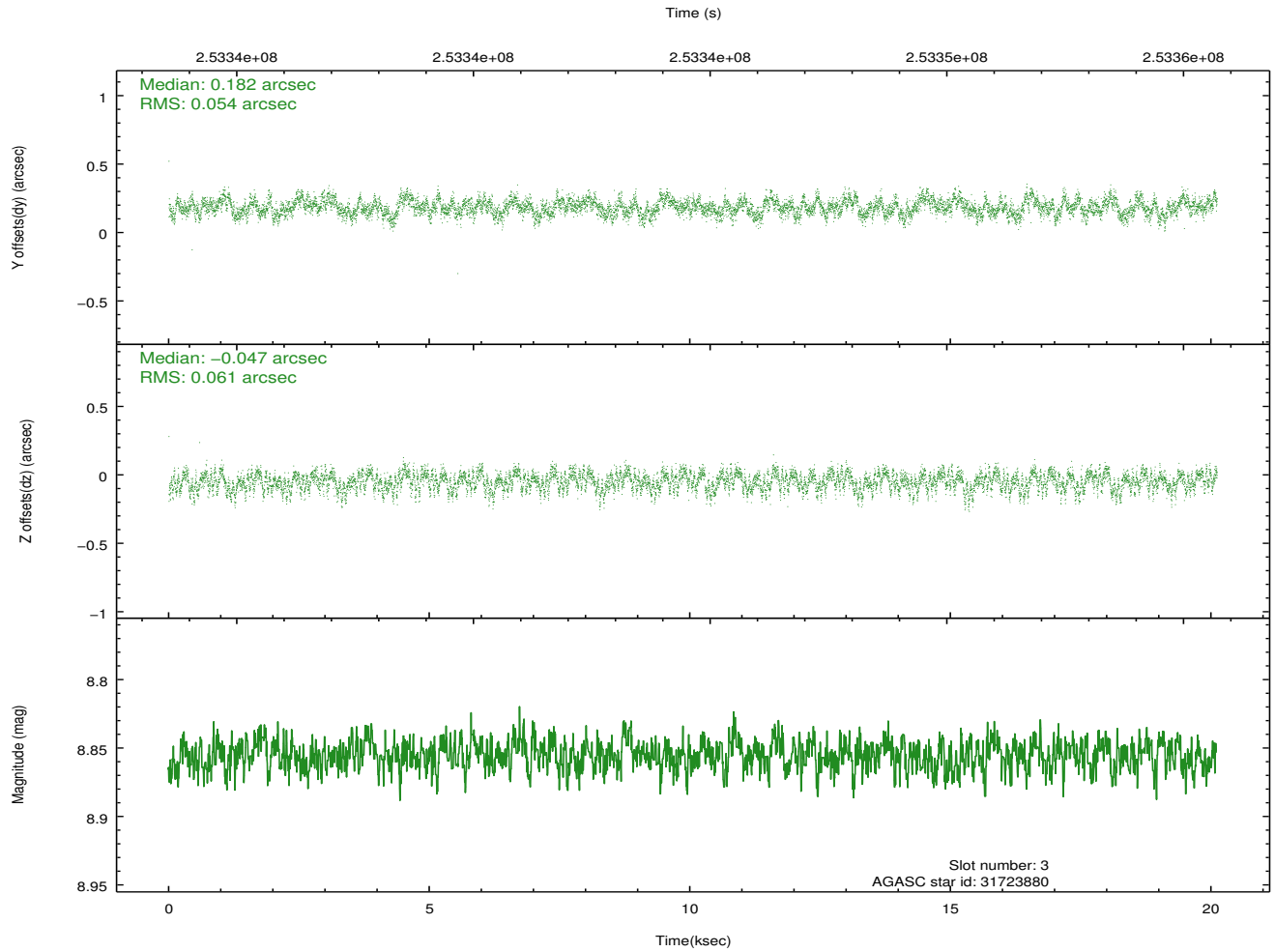
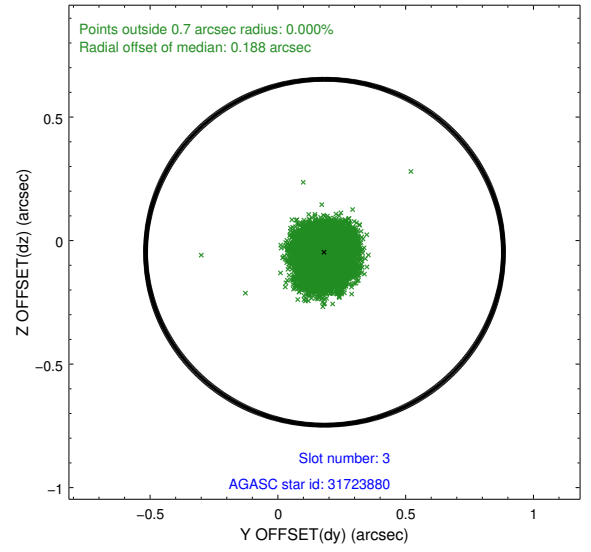
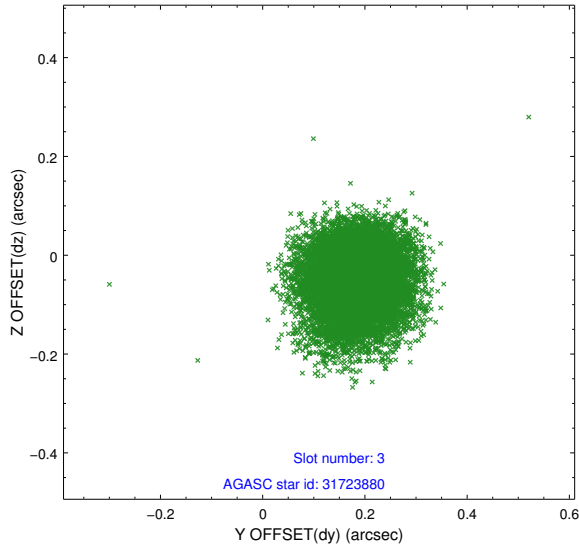
Slot Statistics

slot	status	id	mag	n_pts	med_dy	med_dz	dr1	dr2	ra	dec	mean_y	mean_z
0	FID	ACIS-S-2	7.11	4906	-0.030	-0.028	0.012	0.021	0.000000	0.000000	-762.08	-1733.04
1	FID	ACIS-S-4	7.21	4906	0.146	0.022	0.011	0.020	0.000000	0.000000	2151.28	175.31
2	FID	ACIS-S-5	7.23	4907	-0.147	0.014	0.010	0.017	0.000000	0.000000	-1814.81	169.17
3	GUIDE	31723880	8.86	9808	0.182	-0.047	0.088	0.137	146.909664	6.819343	-1813.24	-957.52
4	GUIDE	31725656	9.22	9631	0.080	0.020	0.113	0.185	147.420881	6.969118	-479.02	-2316.82
5	GUIDE	31857872	8.81	9808	-0.167	0.149	0.075	0.119	147.607013	7.468204	1419.25	-2057.71
6	GUIDE	108541448	9.62	9763	-0.071	-0.064	0.126	0.207	147.263228	7.819097	1955.84	-380.04
7	GUIDE	108542720	9.76	9797	-0.024	-0.061	0.129	0.208	147.367158	7.861922	2267.03	-634.88

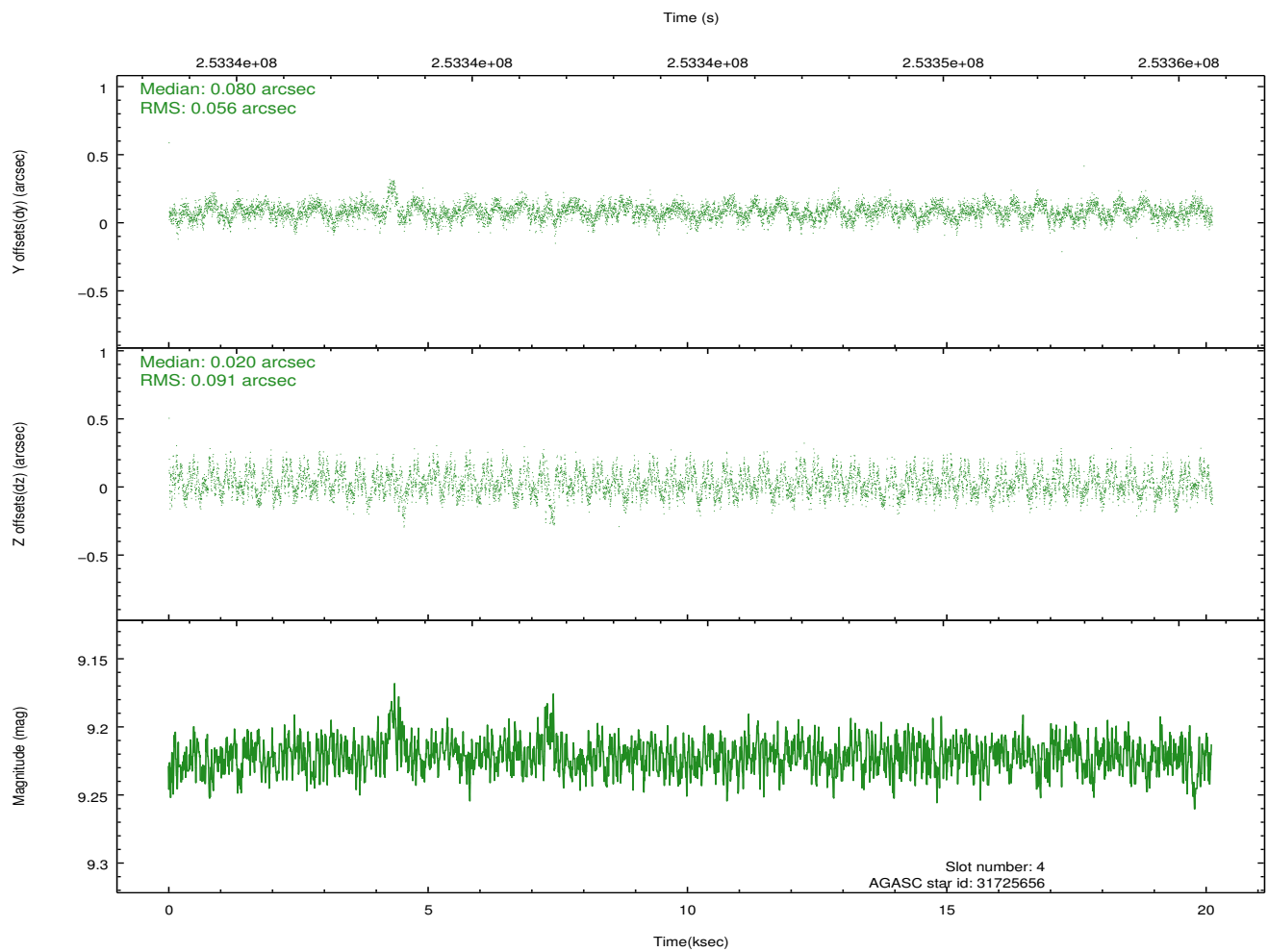
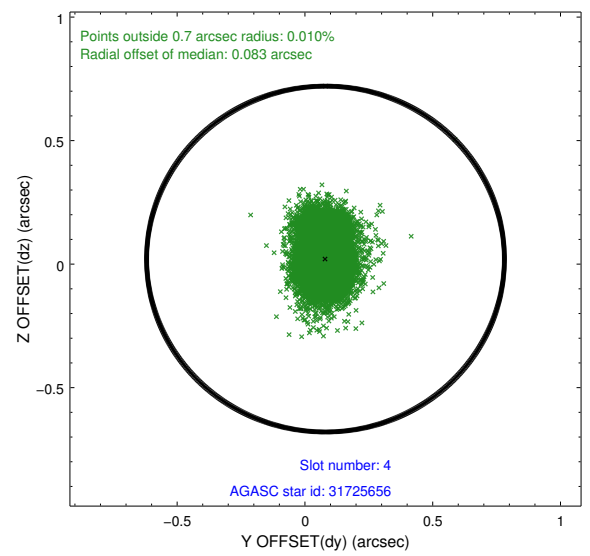
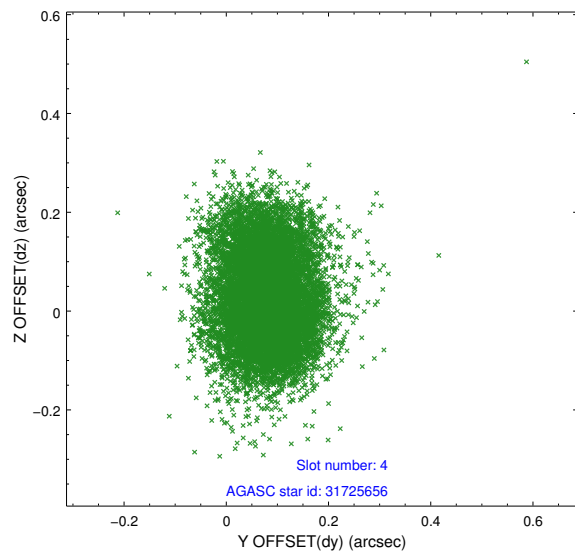
∞

2.4 Star Slots

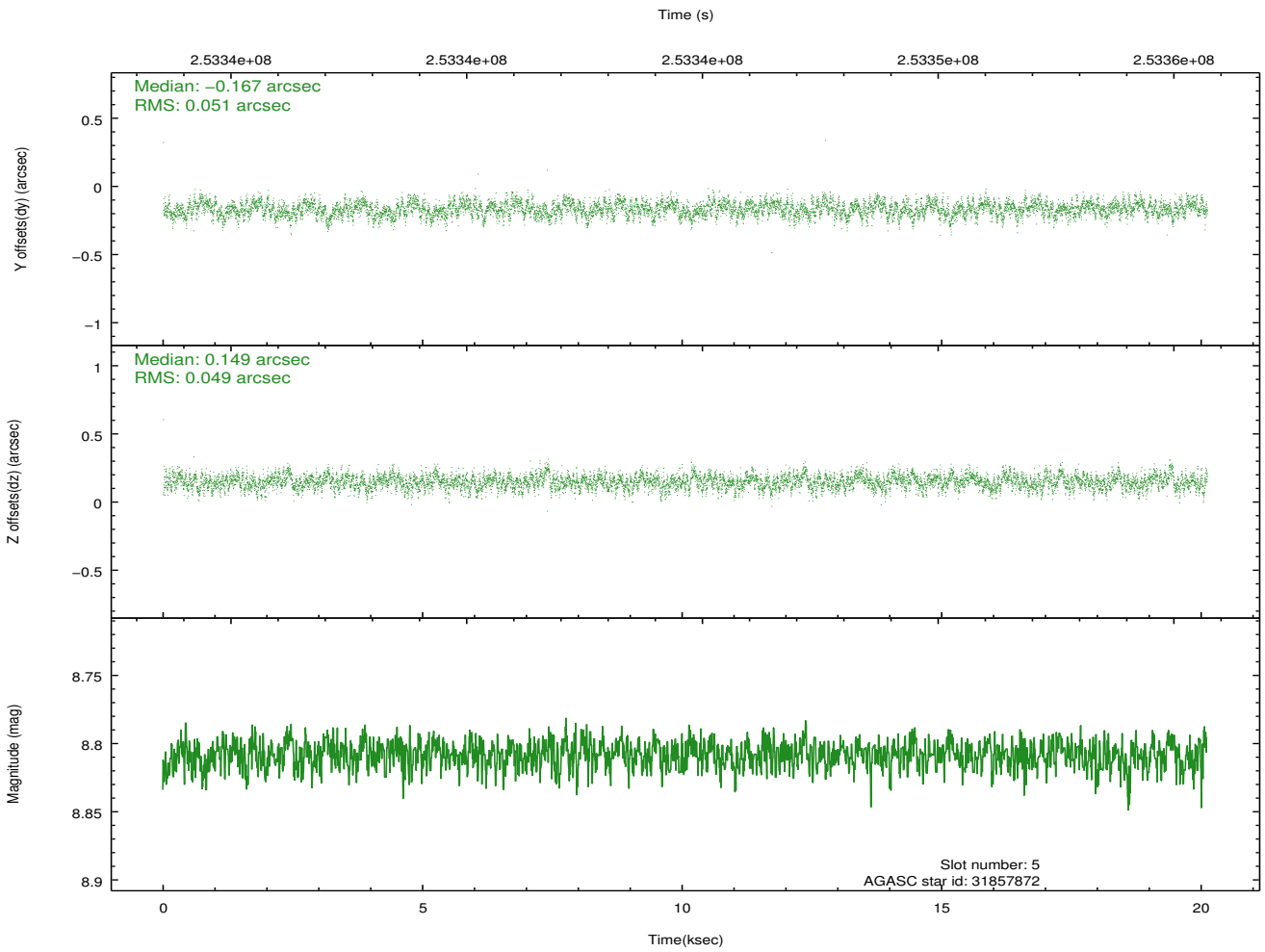
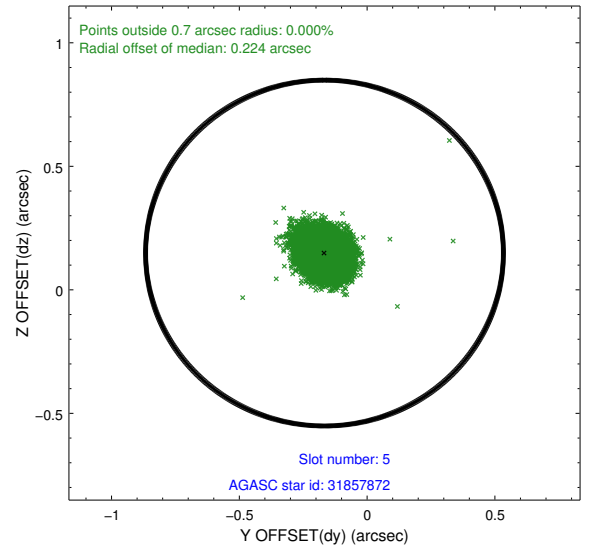
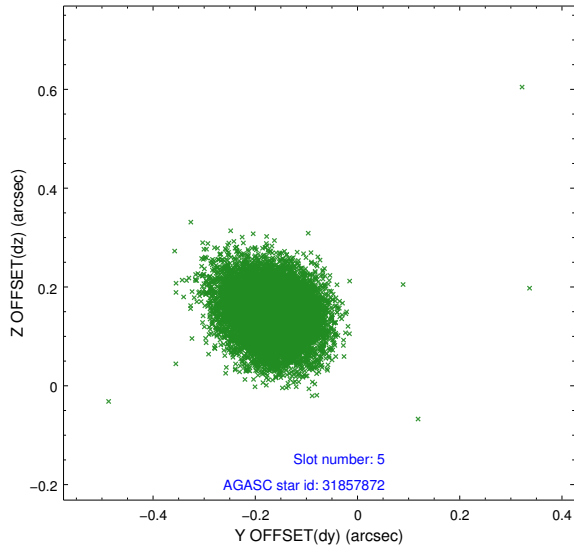
2.4.1 Slot 3



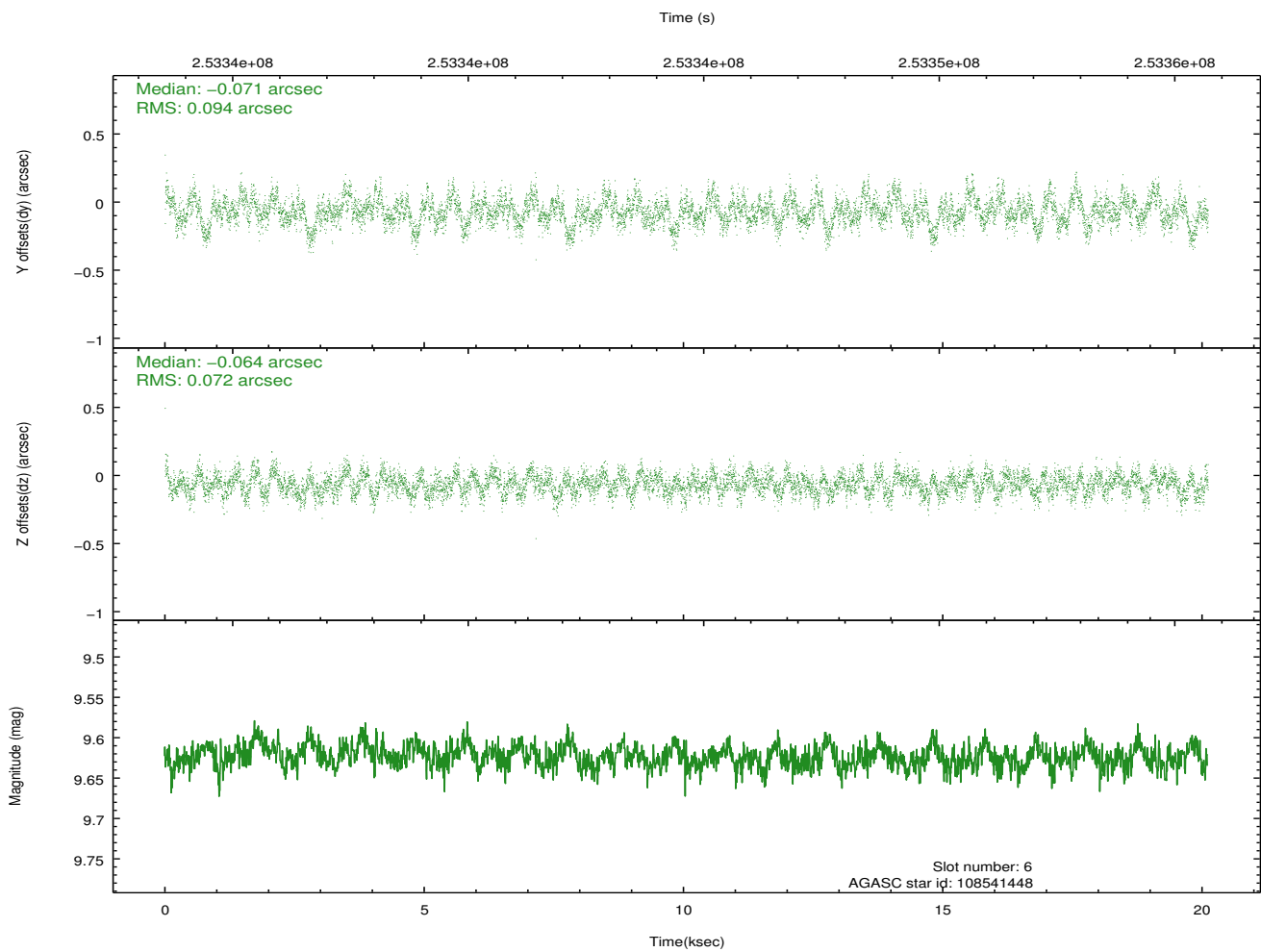
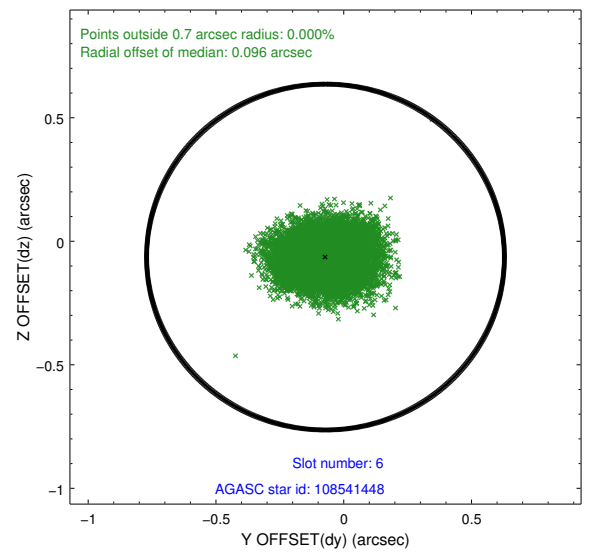
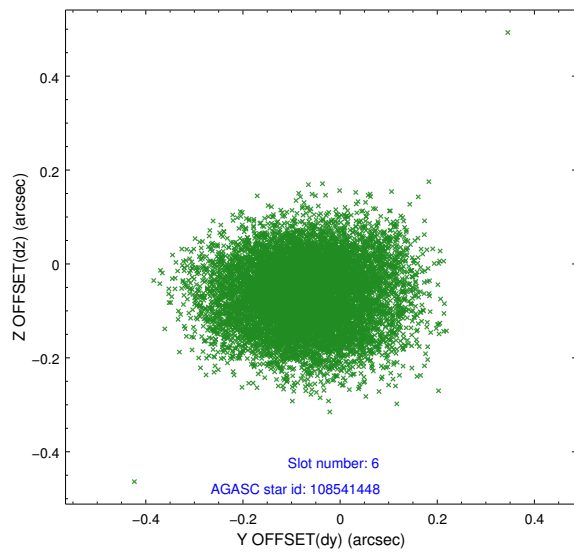
2.4.2 Slot 4



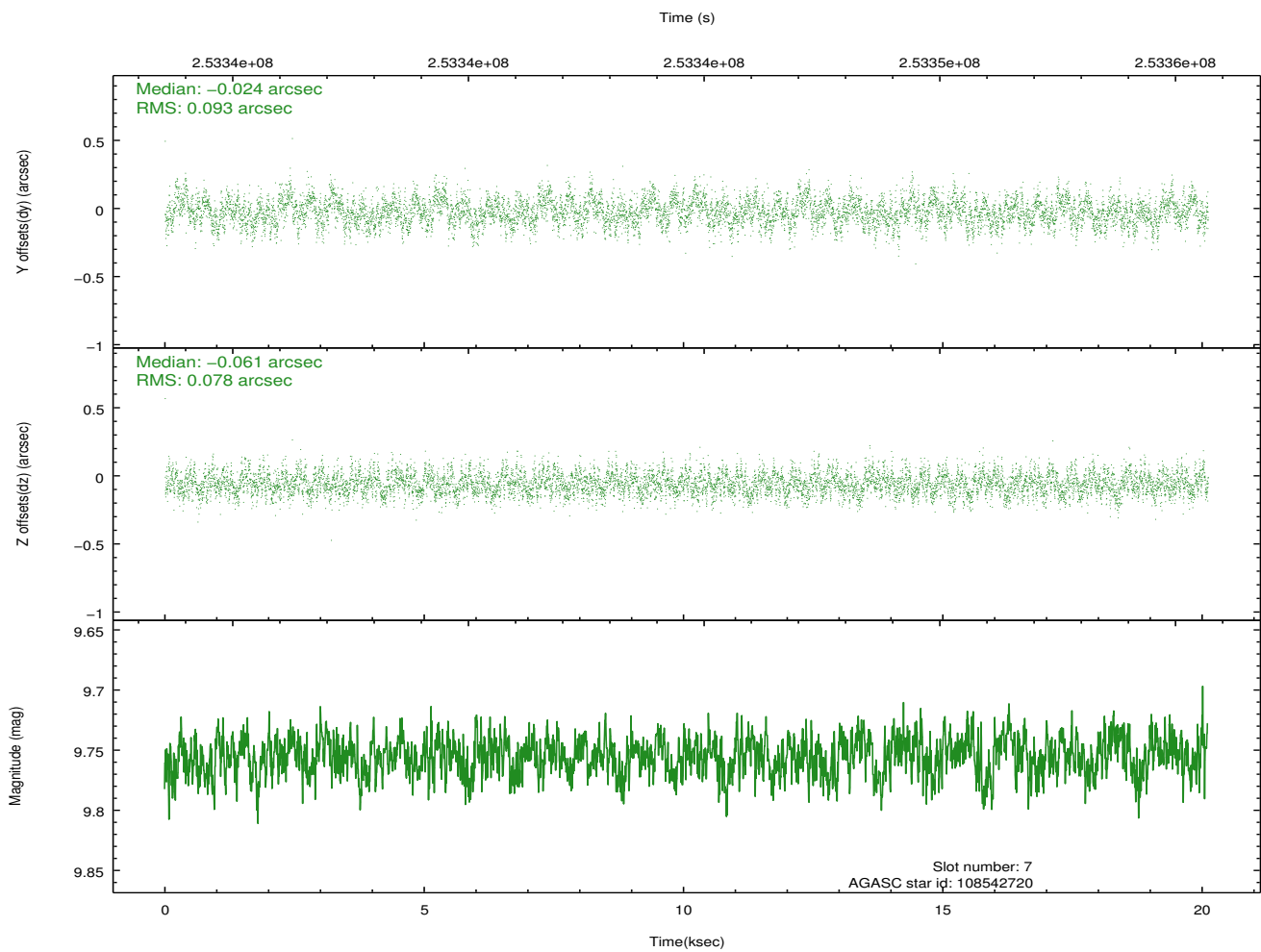
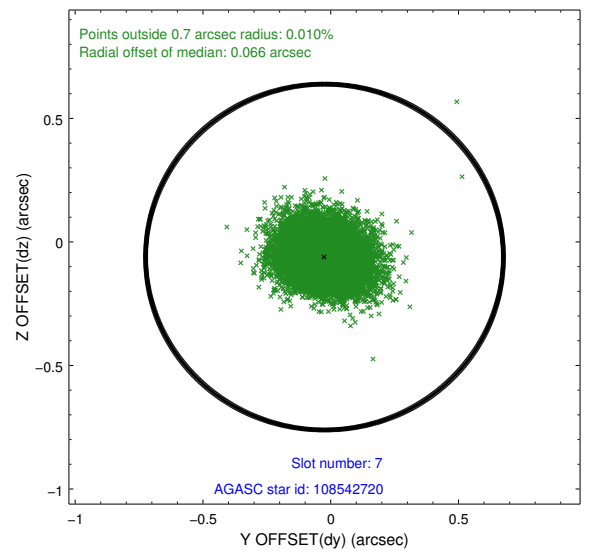
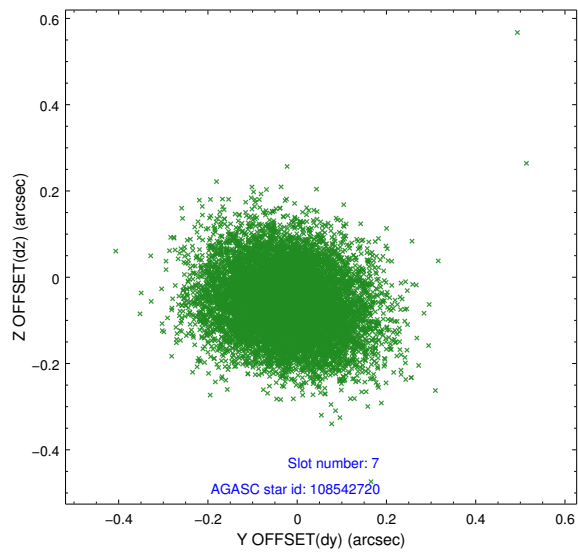
2.4.3 Slot 5



2.4.4 Slot 6

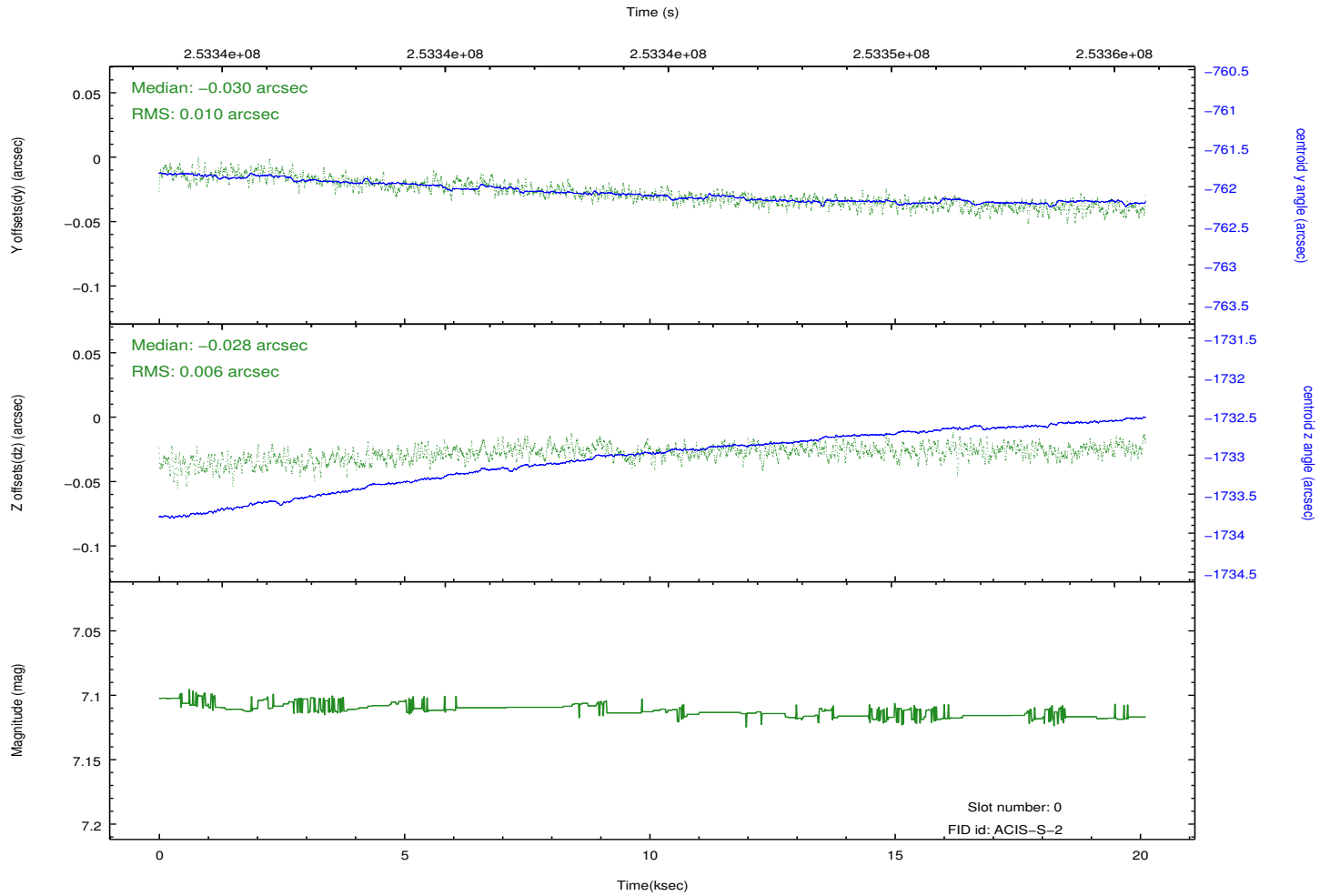
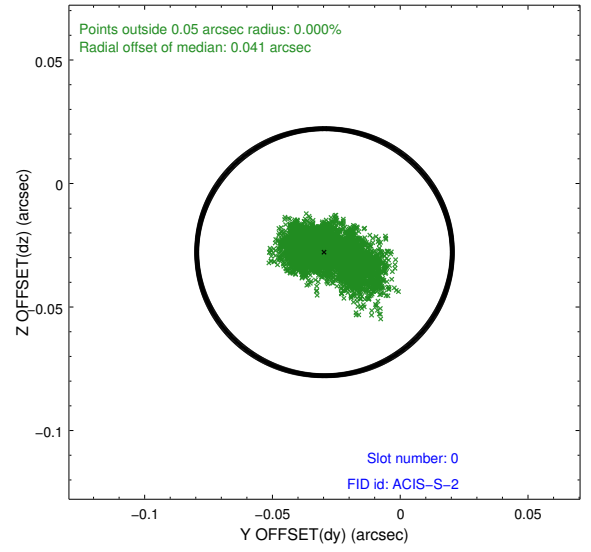
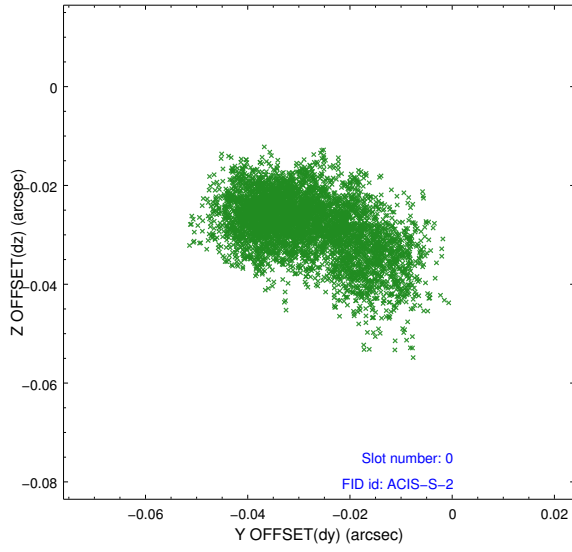


2.4.5 Slot 7

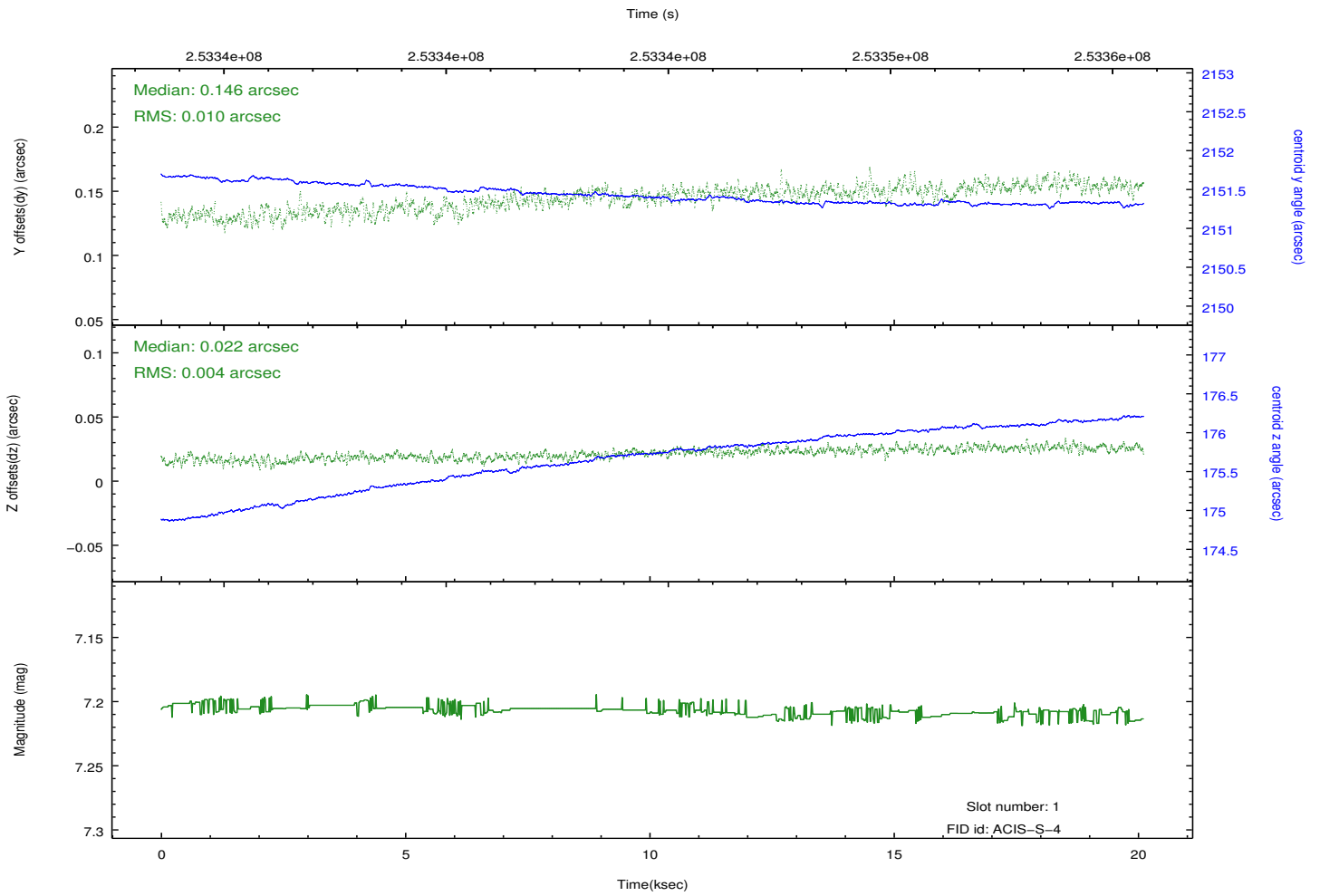
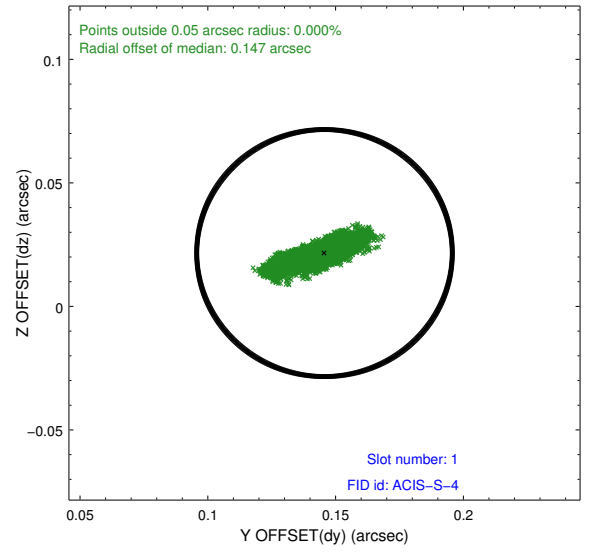
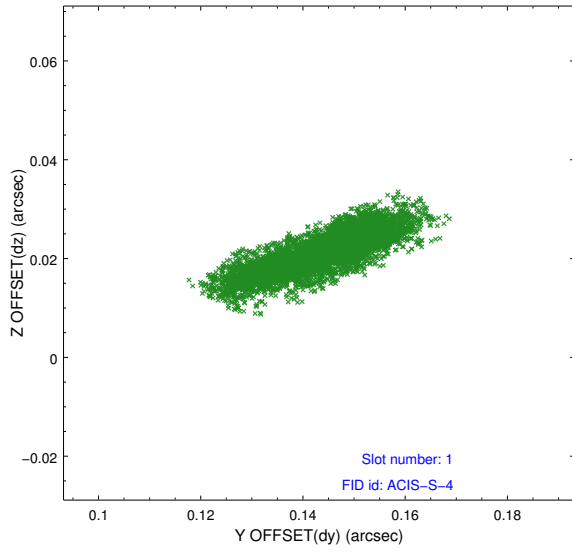


2.5 FID Slots

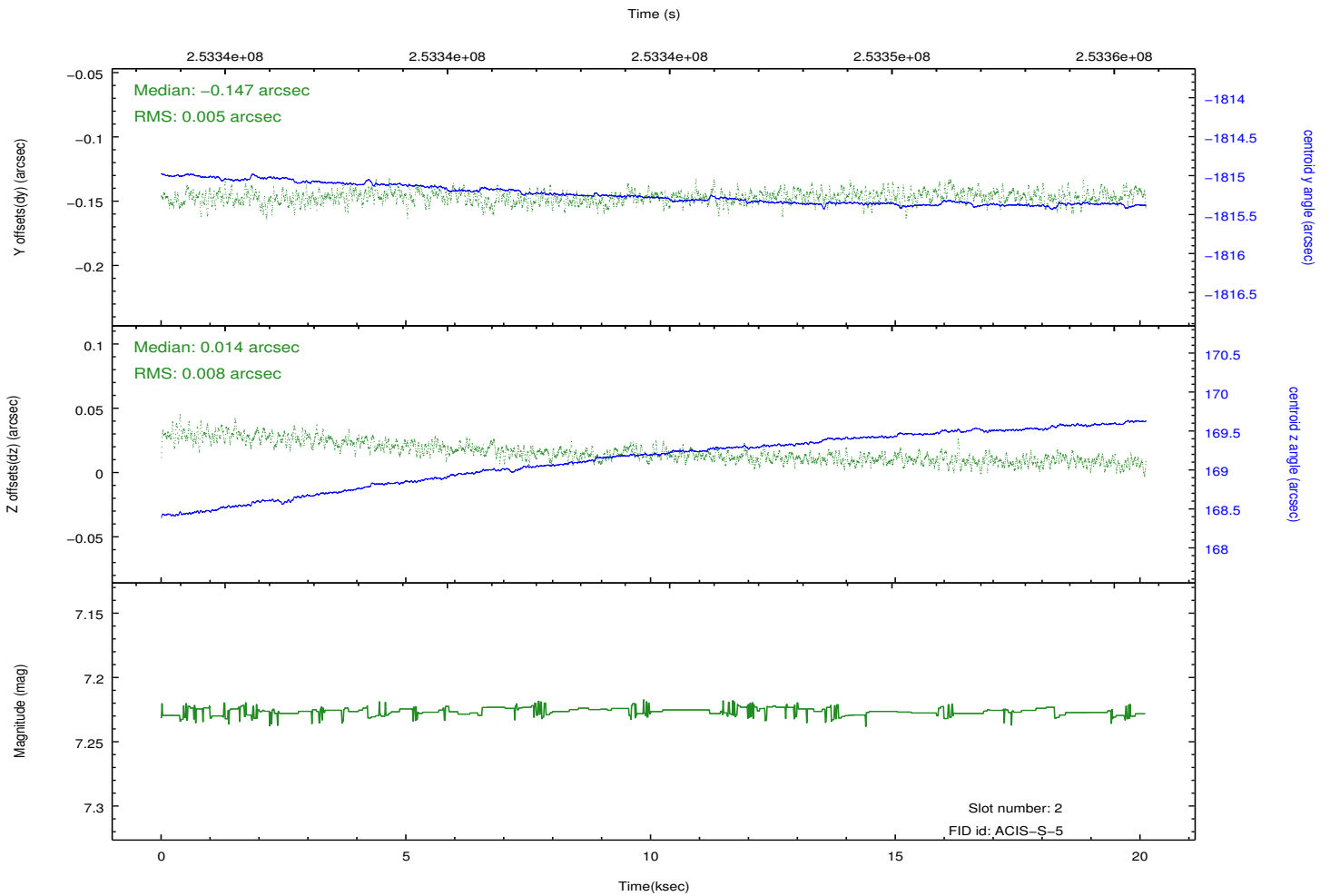
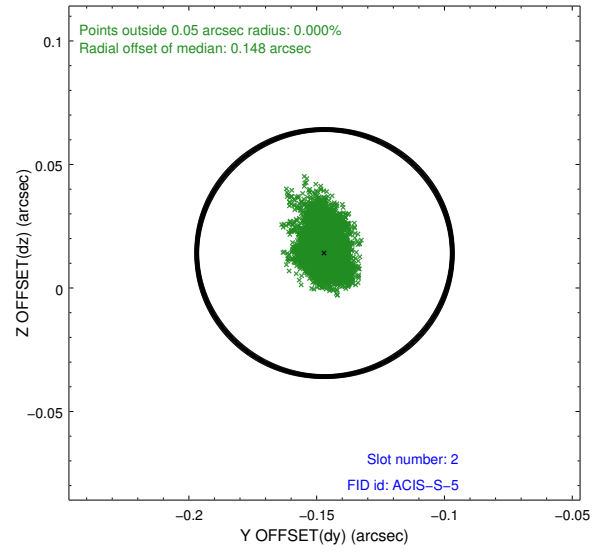
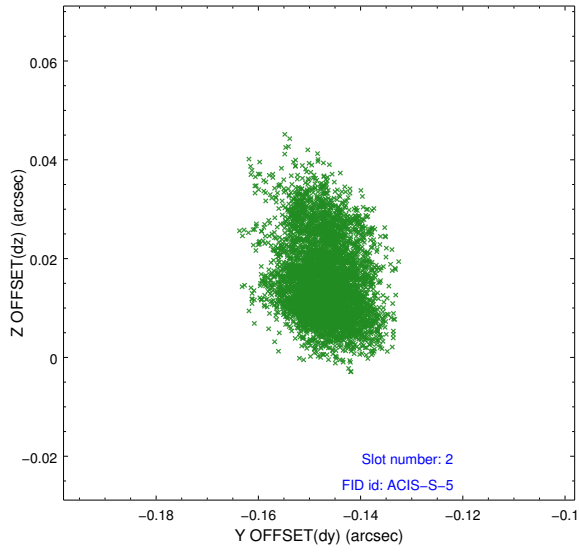
2.5.1 Slot 0



2.5.2 Slot 1



2.5.3 Slot 2



A Summary

A.1 Status

V&V Scientist	Jen Lauer
V&V Date (YYYY-MM-DD)	2012.03.23
V&V Edition	1
V&V Disposition and Status	OK
V&V Charge Time	20.1065999

A.2 Comments