

V&V Reference Report

L2 ASCDS Version : 8.4.3.1

Observation 7295 - L2 Version 3
Chandra X-Ray Center

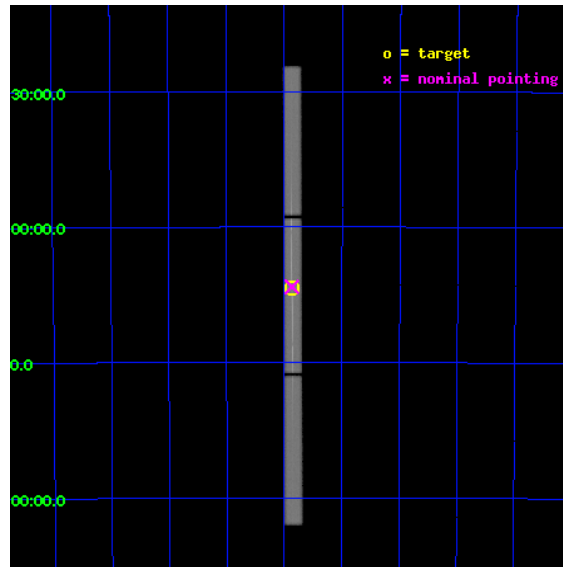
L2 Processing Date : Aug 11 2012

Contents

1	Front	2
2	OBI	3
2.1	OBI	3
2.1.1	Images	3
2.1.2	Parameters	4
2.1.3	Events	4
2.2	Compared Parameters	5
2.3	Aspect	6
2.4	Star Slots	9
2.4.1	Slot 3	9
2.4.2	Slot 4	10
2.4.3	Slot 5	11
2.4.4	Slot 6	12
2.4.5	Slot 7	13
2.5	FID Slots	14
2.5.1	Slot 0	14
2.5.2	Slot 1	15
2.5.3	Slot 2	16
3	Gratings	17
3.1	LETG Arm	17
A	Summary	19
A.1	Status	19
A.2	Comments	19

1 Front

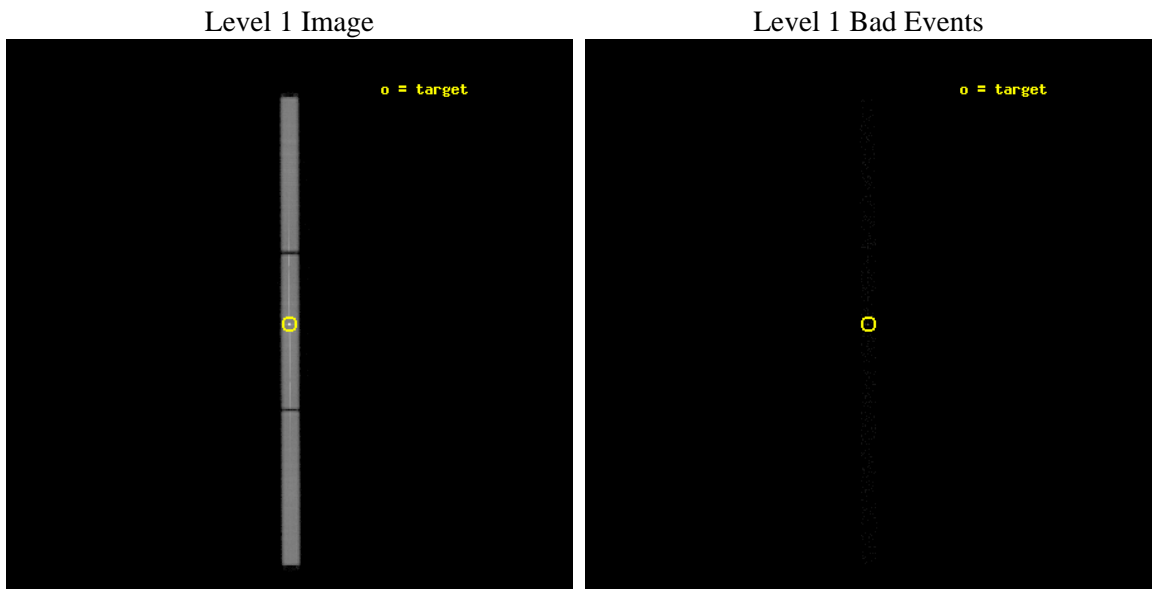
seq_num	790112	Sequence number
obs_id	7295	Observation id
title	AO7 Calibration Observations of 3C273	Proposal title
observer	Dr. CXC Calibration	Principal investigator
object	PKS2155-304	Source name
ra_targ	329.716667	Observer's specified target RA [deg]
dec_targ	-30.225556	Observer's specified target Dec [deg]
ra_nom	329.7169027673	Nominal RA [deg]
dec_nom	-30.221006226758	Nominal Dec [deg]
roll_nom	89.733142255566	Nominal Roll [deg]
revision	3	Processing version of data
ontime	10150.831725597	[s]
livetime	10054.580800245	Ontime multiplied by DTCOR
l2events	836425	Number of level 2 events



2 OBI

2.1 OBI

2.1.1 Images



2.1.2 Parameters

obi_num	0	Obi number	sched_exp_time	10000.000000	[s] Scheduled observation exposure time
ascdsver	8.4.5	Processing system revision	ontime	10150.831725597	[s]
caldbver	4.5.1.1	 	l1events	1110380	Number of level 1 events
date	2012-08-11T08:28:46	Date and time of file creation			
revision	3	Processing version of data			

2.1.3 Events

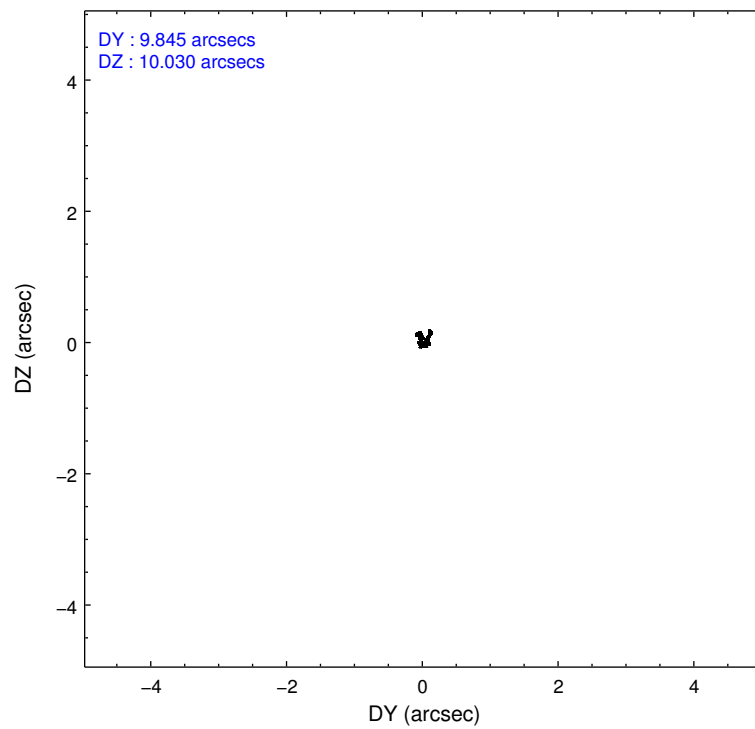
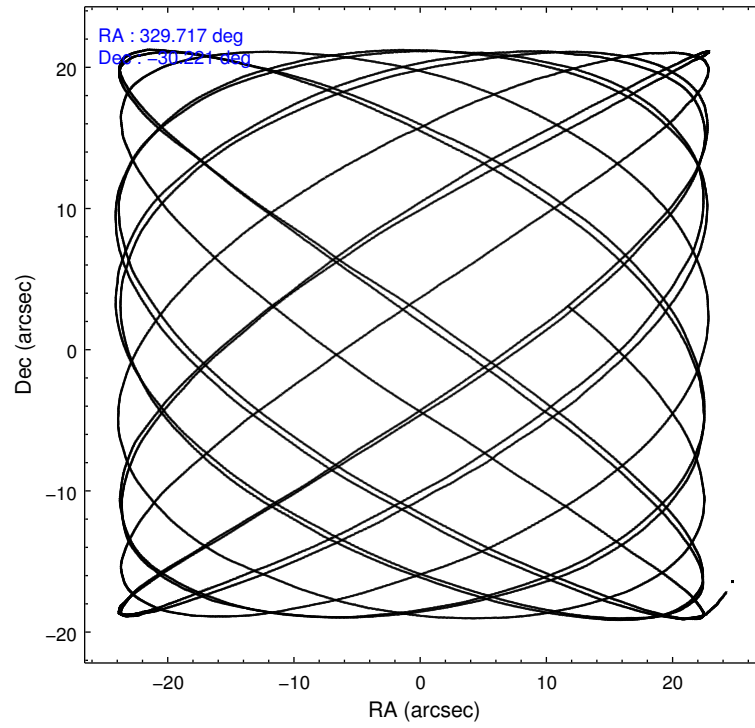
Level 1 Events

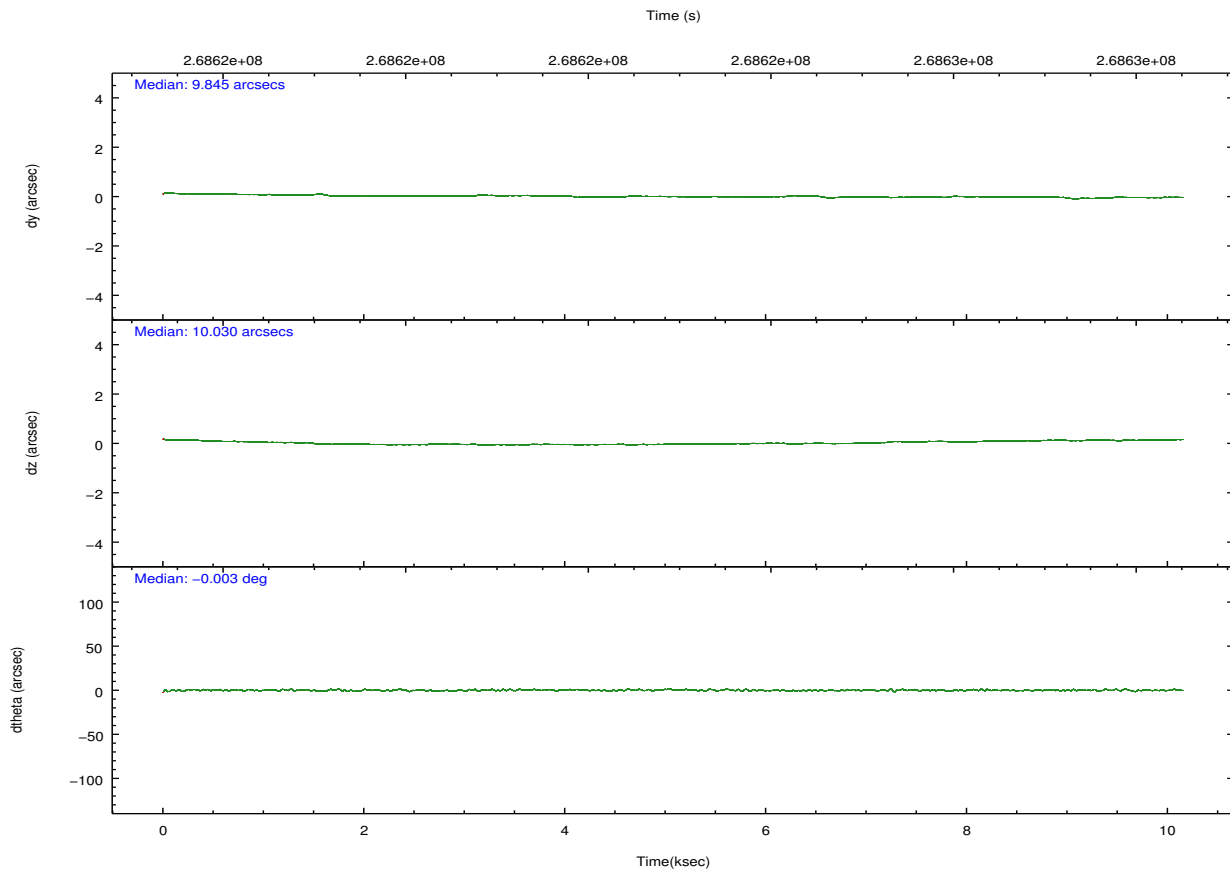
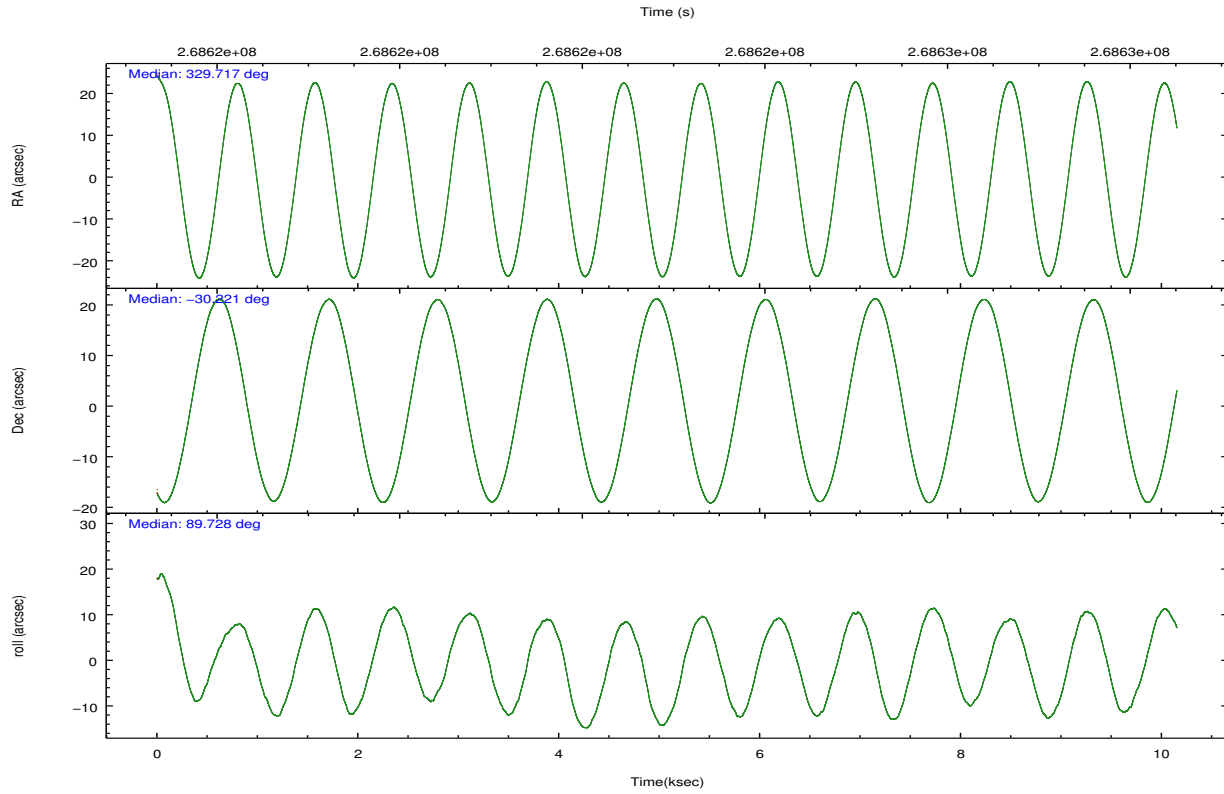
	segment 1	segment 2	segment 3
level 1 events	340641	423049	346690
rejected events	9537	10918	9628
rejected %	2%	2%	2%

2.2 Compared Parameters

Parameter	Planned	Actual	Parameter	Planned	Actual
Instrument	HRC	HRC	Obspar format version number	7	7
Detector	HRC-S	HRC-S	Obspar file type	PREDICTED	ACTUAL
Grating	LETG	LETG	Obspar update status	NONE	UPDATED
Data mode	OBSERVING	OBSERVING			
Observation mode	POINTING	POINTING			
[deg] Pointing RA	329.734671	329.7169027672953			
[deg] Pointing Dec	-30.244986	-30.22100622675821			
[deg] Pointing Roll	89.674753	89.73314225556641			
[mm] SIM focus pos	-1.429586	-1.428180813131781			
[mm] SIM defocus	0.1037507710433287	0.1051558262725154			
[mm] SIM translation stage pos	250.455976	250.466033080201			
[mm] SIM translation stage offset	0	-0.01005468664627074			
[s] Observation start time (MET)	268618011.184000	268617582.33084			
Observation start date	2006-07-07T00:05:46	2006-07-06T23:59:42			
[s] Observation end time (MET)	268628011.184000	268628253.60634			
Observation end date	2006-07-07T02:52:26	2006-07-07T02:57:33			

2.3 Aspect



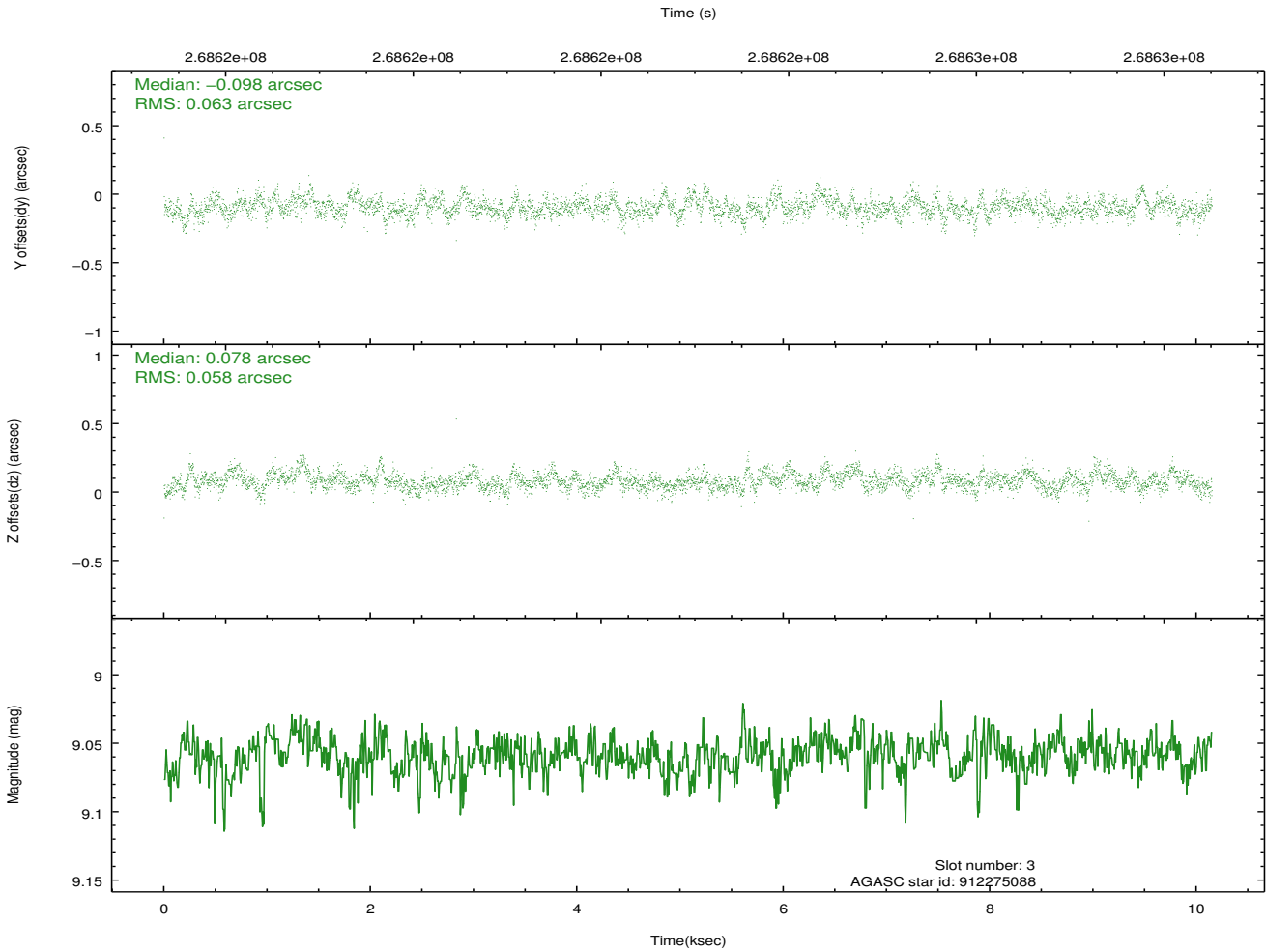
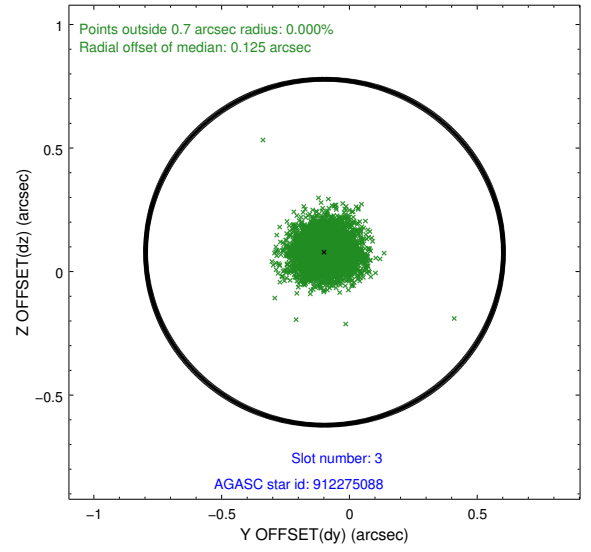
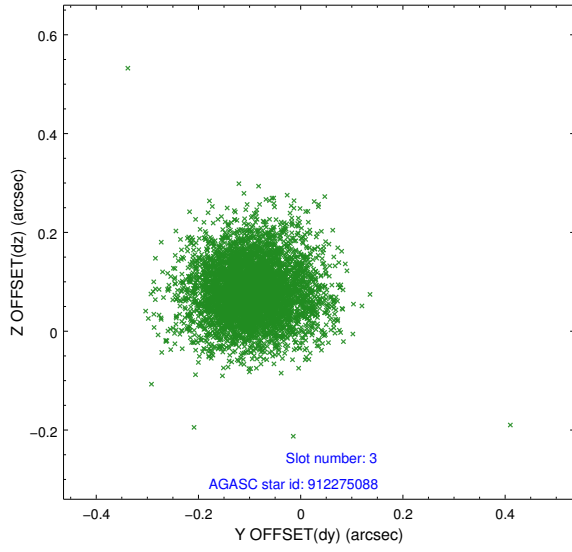


Slot Statistics

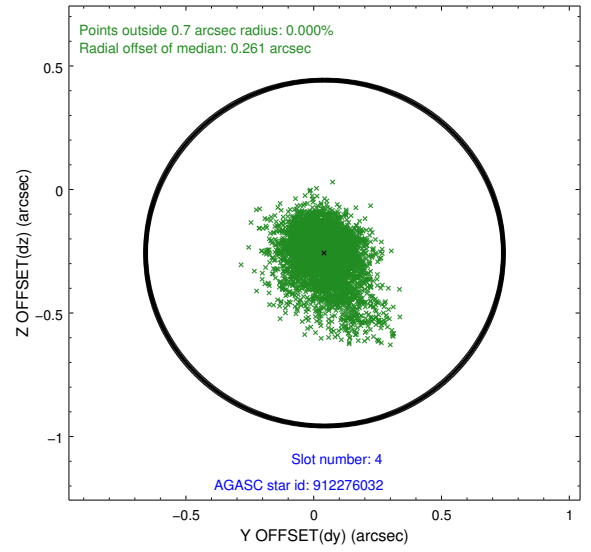
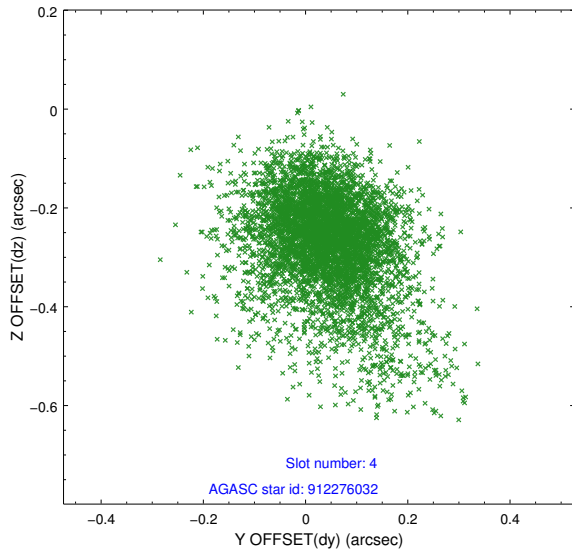
slot	status	id	mag	n_pts	med_dy	med_dz	dr1	dr2	ra	dec	mean_y	mean_z
0	FID	HRC-S-1	7.04	2477	0.136	-0.213	0.007	0.012	0.000000	0.000000	-1164.08	-458.79
1	FID	HRC-S-2	7.03	2477	0.158	-0.115	0.005	0.009	0.000000	0.000000	1235.15	-451.55
2	FID	HRC-S-3	7.05	2476	0.096	0.026	0.007	0.012	0.000000	0.000000	-1166.33	570.80
3	GUIDE	912275088	9.06	4934	-0.098	0.078	0.090	0.152	329.619228	-29.738698	1820.84	371.69
4	GUIDE	912276032	9.60	4900	0.042	-0.257	0.124	0.245	329.395967	-29.803466	1582.80	1067.22
5	GUIDE	981469488	9.59	4948	-0.085	0.138	0.125	0.201	329.261199	-30.045155	708.64	1480.16
6	GUIDE	981471664	6.35	4953	0.101	-0.153	0.070	0.117	328.981826	-30.605916	-1319.85	2325.18
7	GUIDE	981478152	9.40	4941	0.039	0.204	0.110	0.175	329.415589	-30.057192	669.29	998.99

2.4 Star Slots

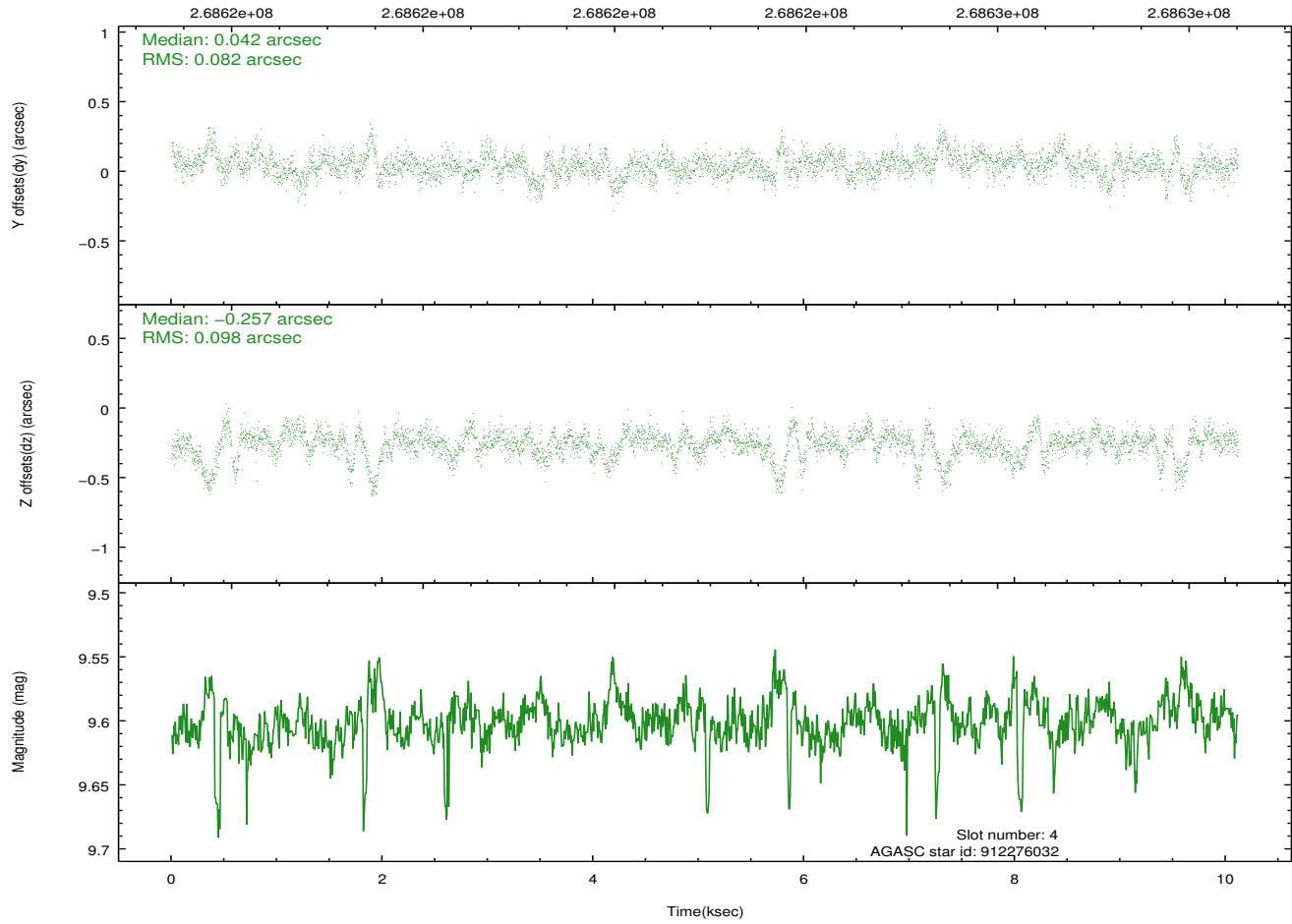
2.4.1 Slot 3



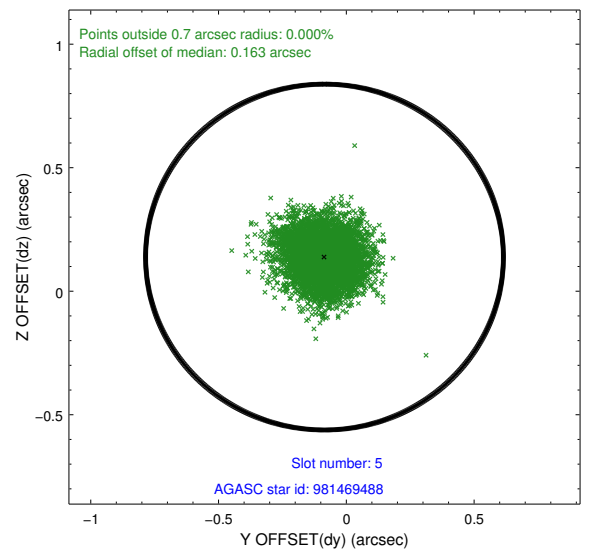
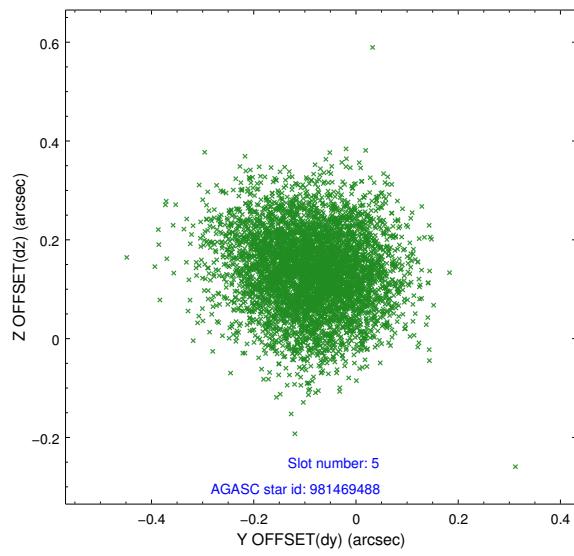
2.4.2 Slot 4



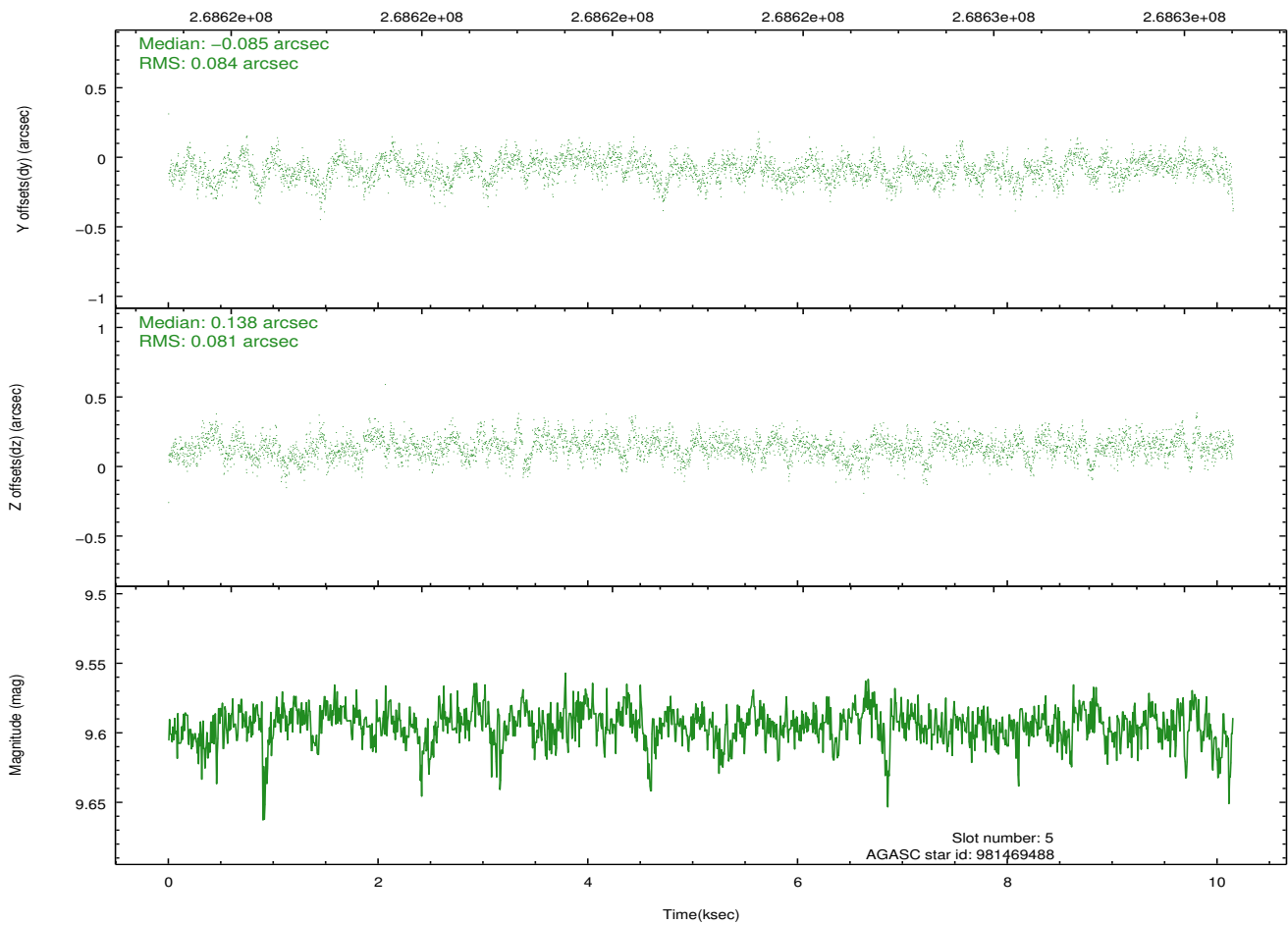
Time (s)



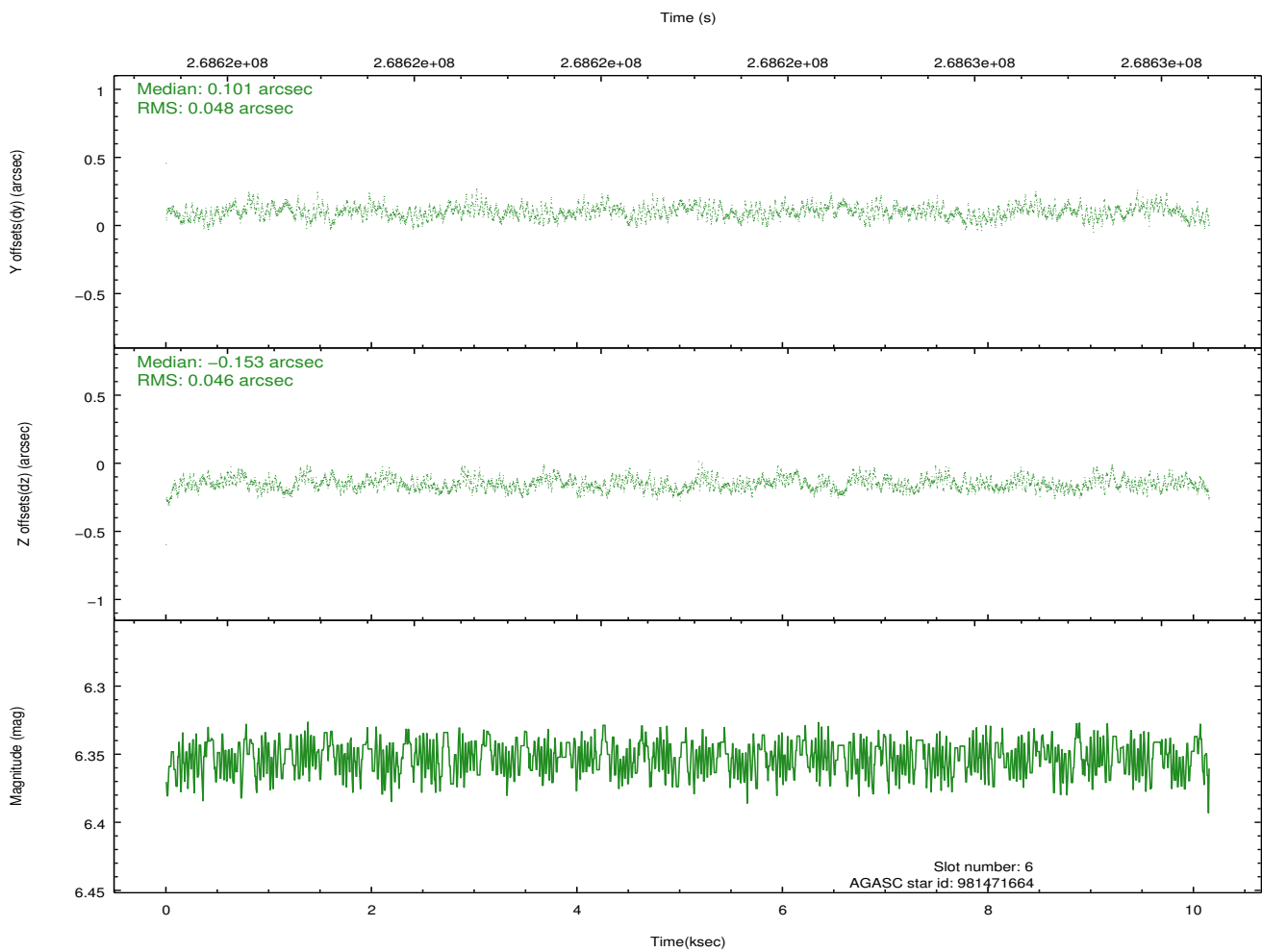
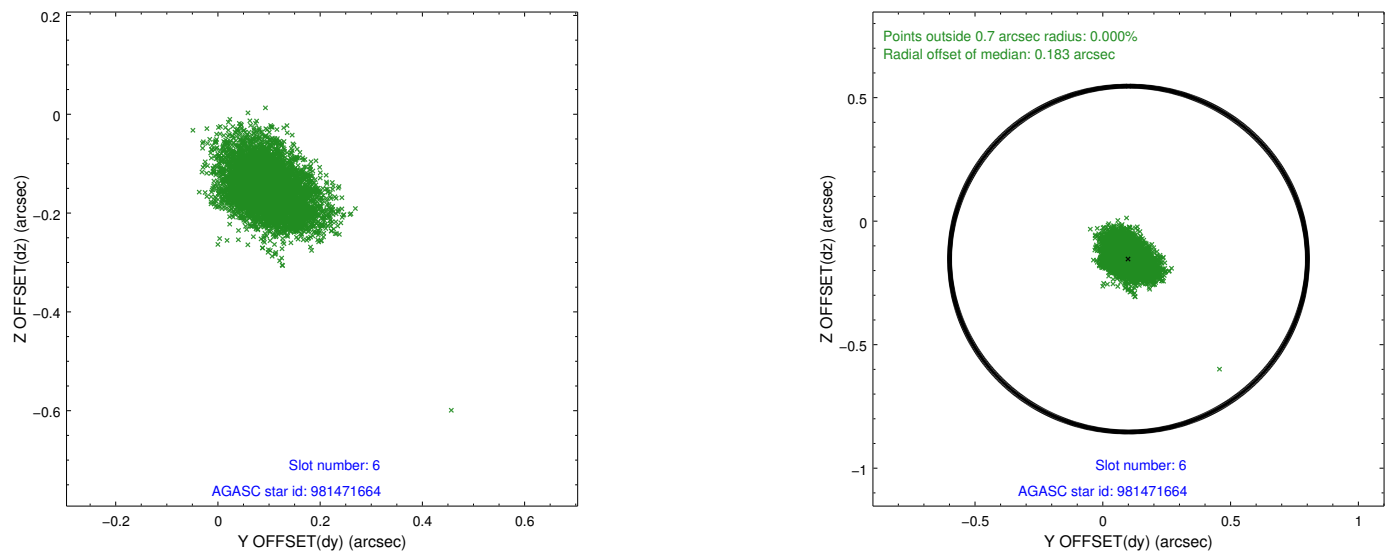
2.4.3 Slot 5



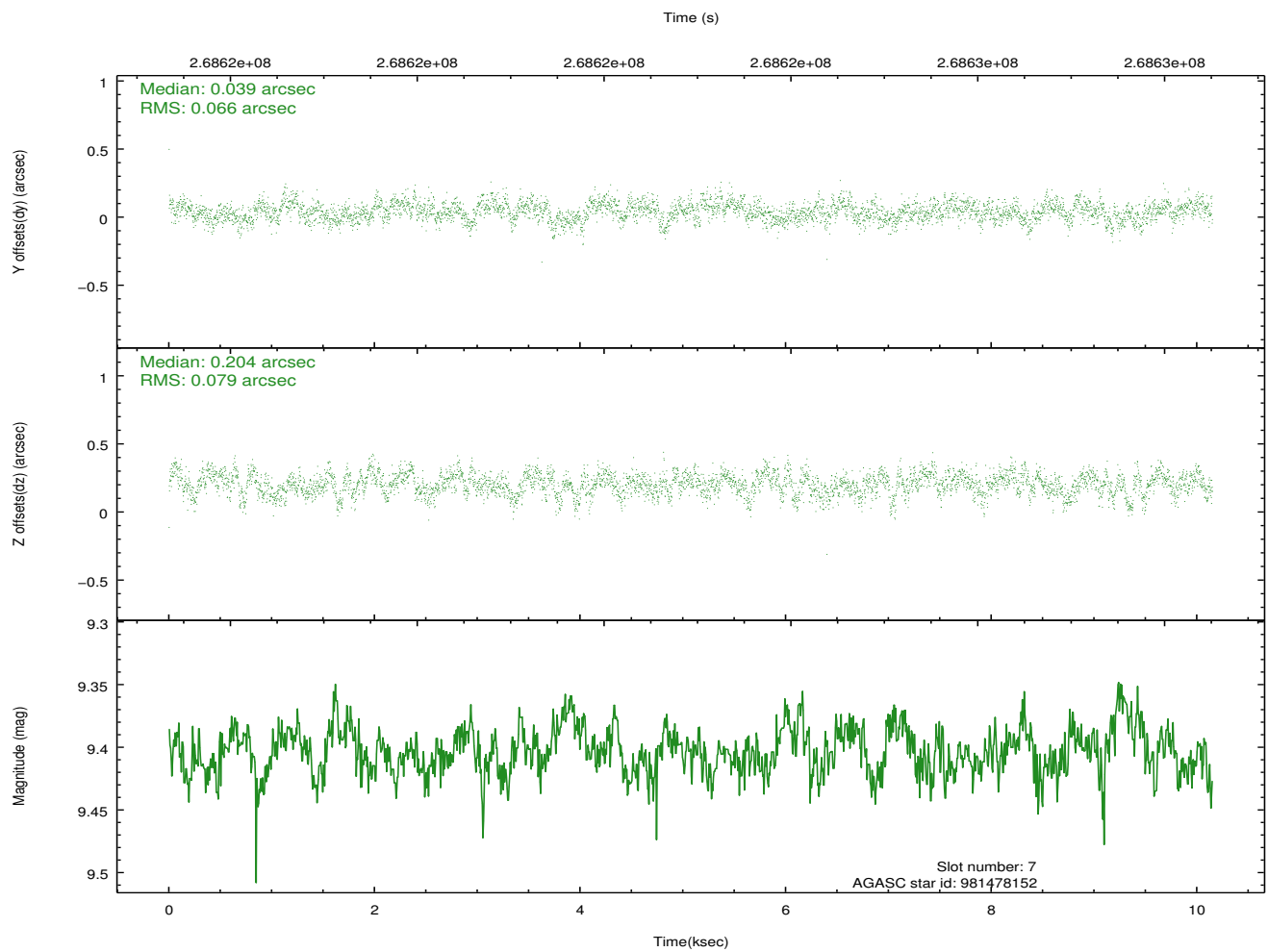
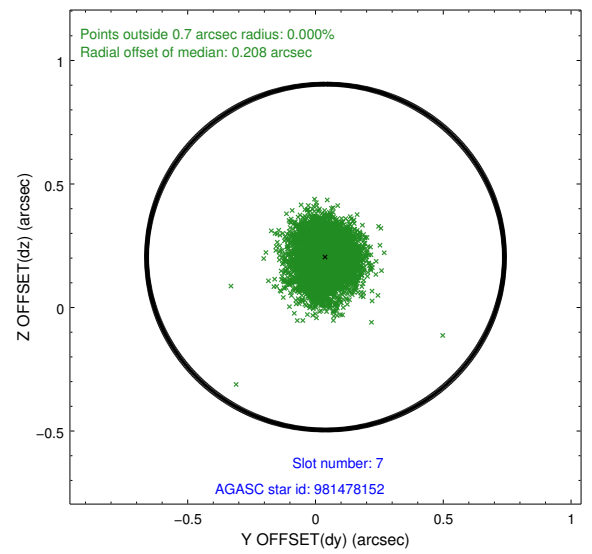
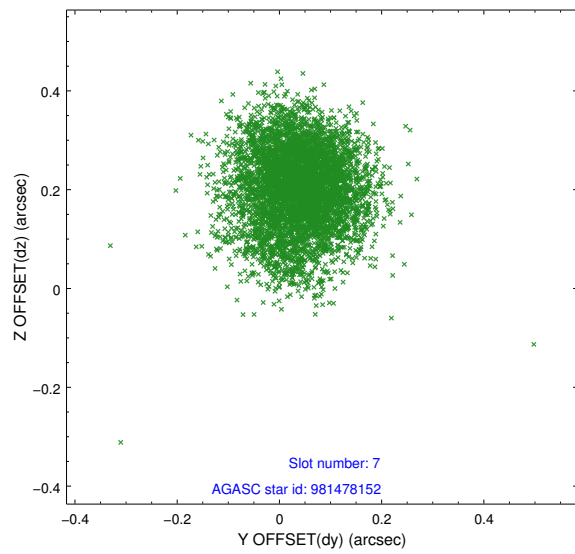
Time (s)



2.4.4 Slot 6

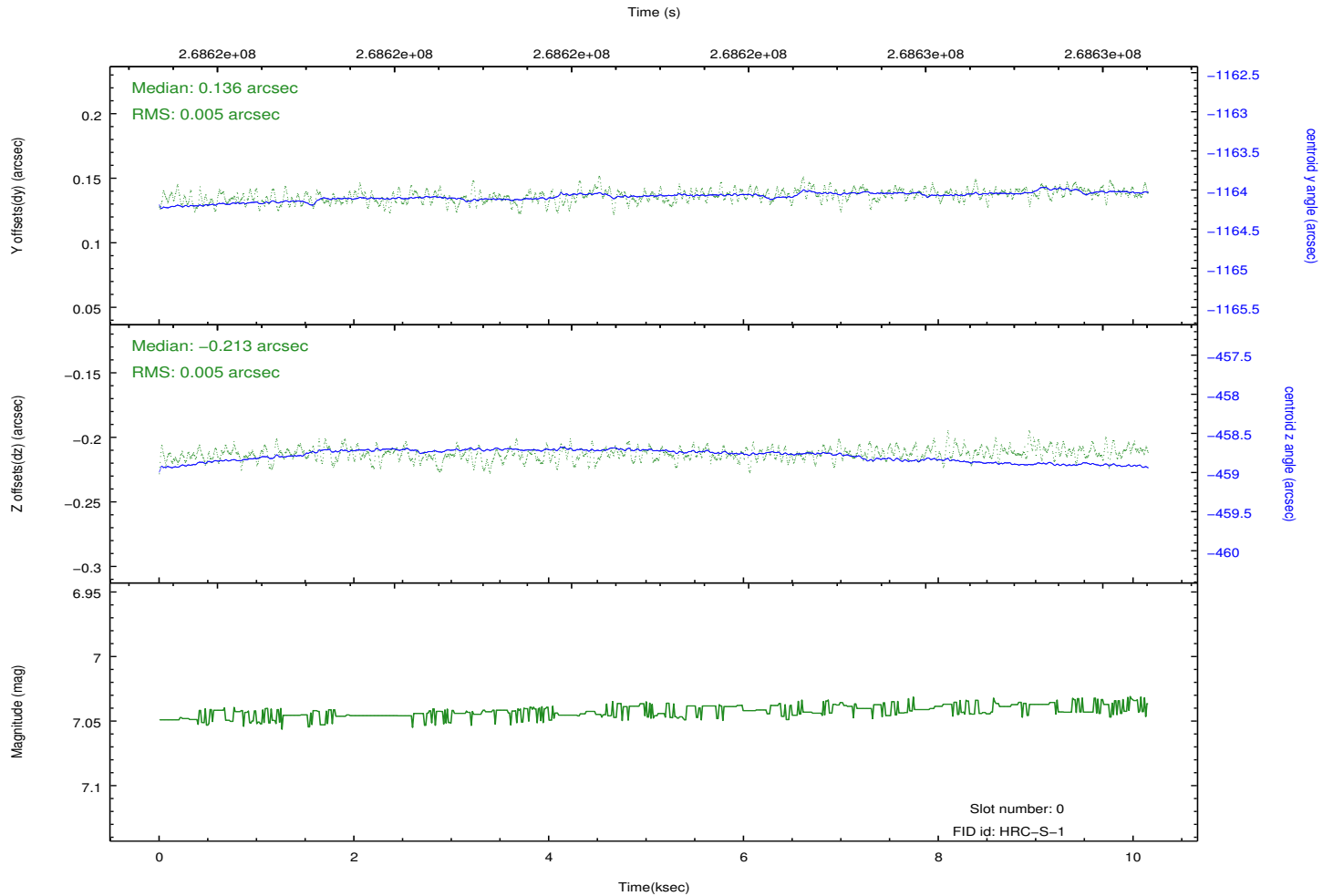
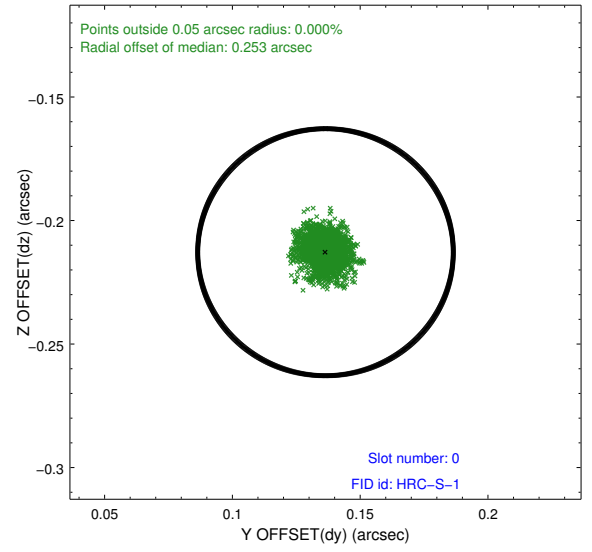
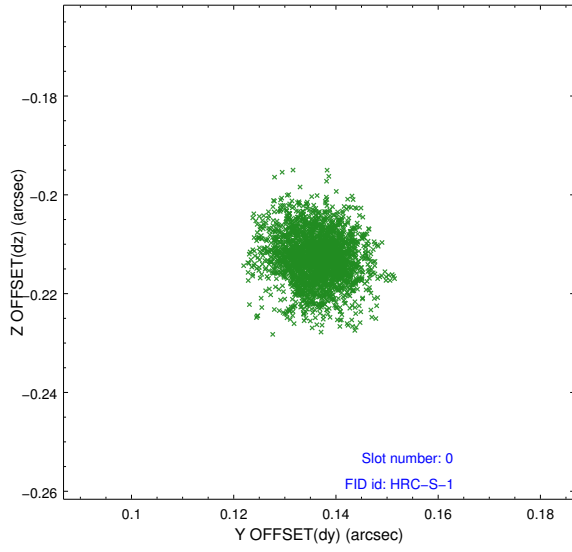


2.4.5 Slot 7

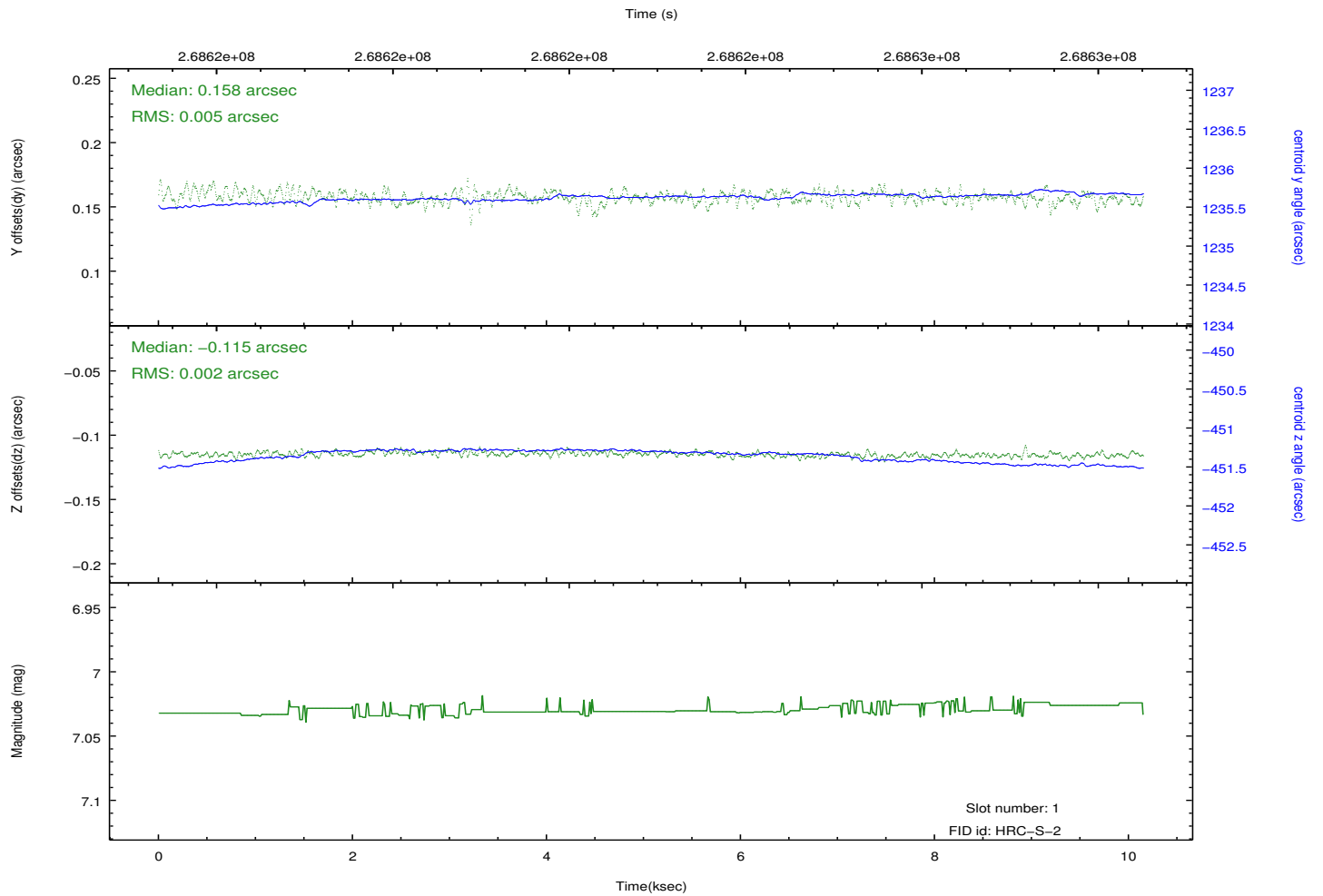
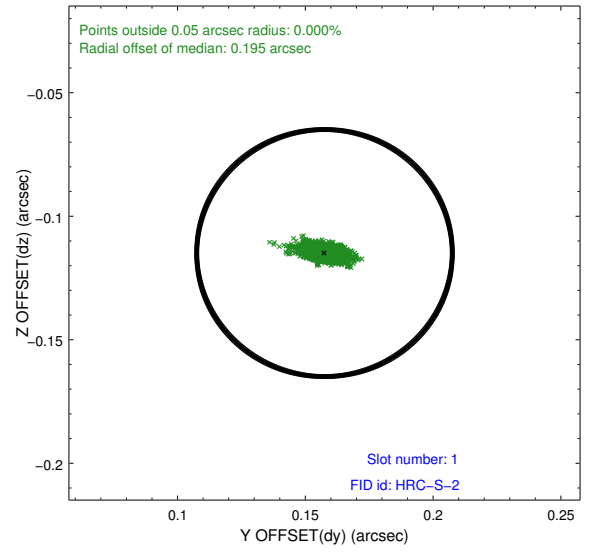
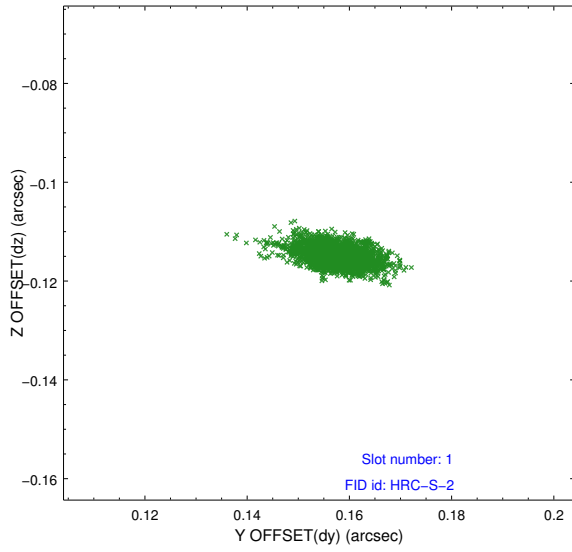


2.5 FID Slots

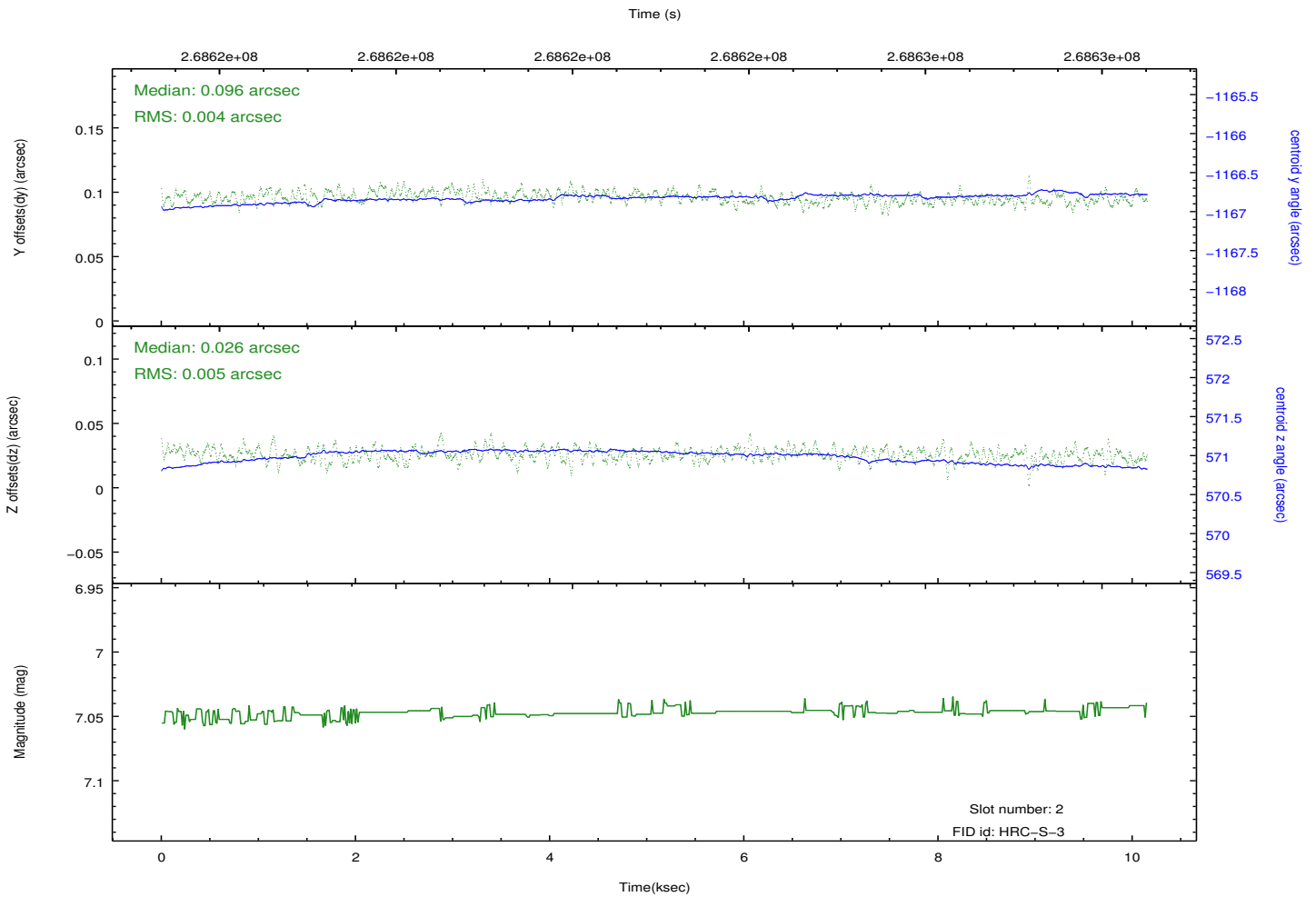
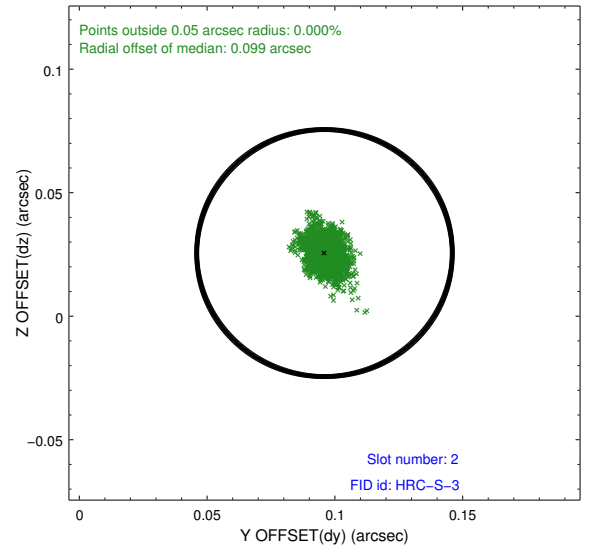
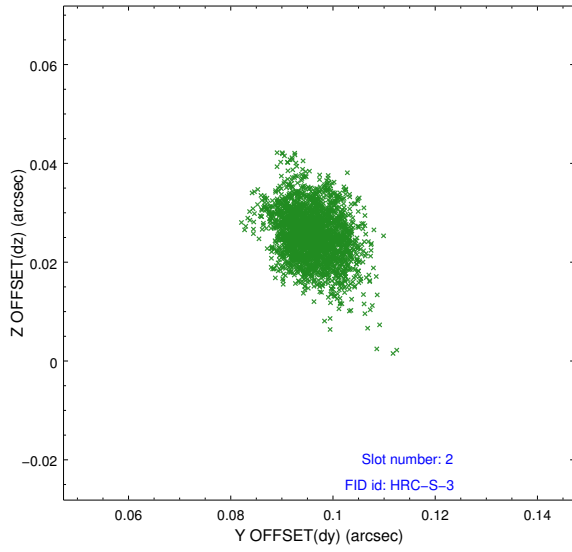
2.5.1 Slot 0



2.5.2 Slot 1

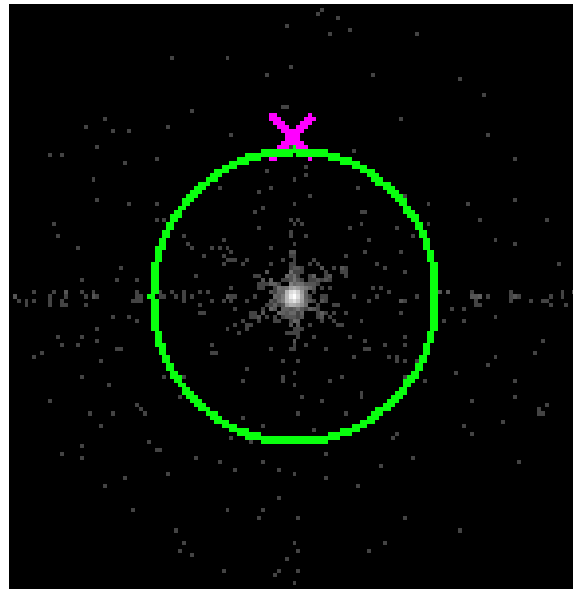


2.5.3 Slot 2

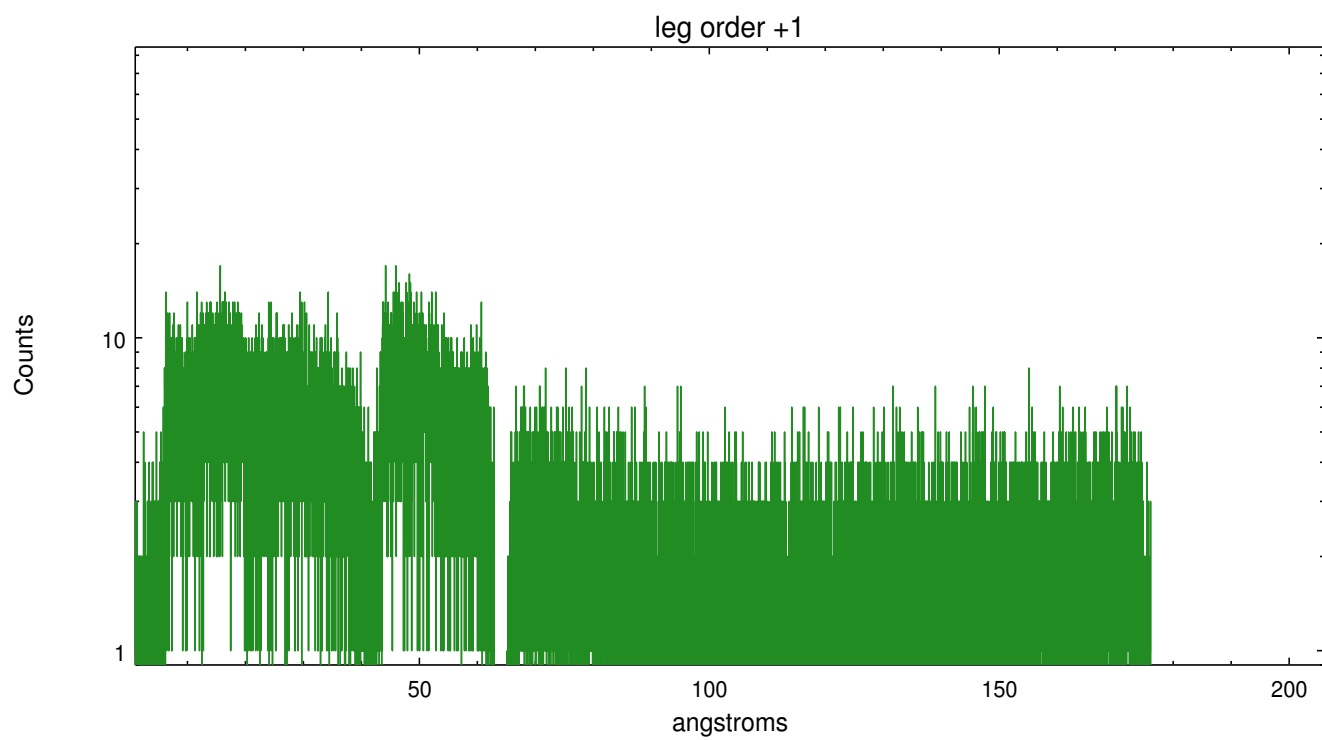
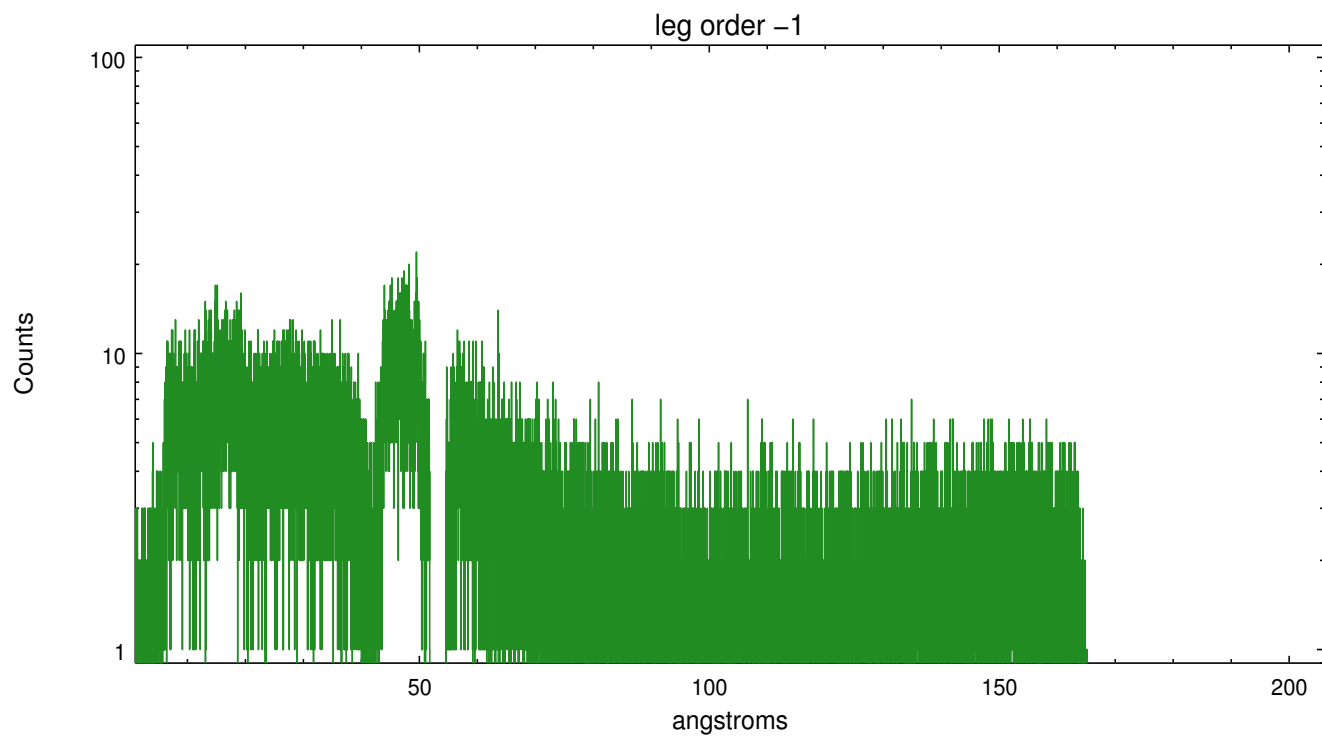


3 Gratings

3.1 LETG Arm



LETG Zero Order



A Summary

A.1 Status

V&V Scientist	Joy Nichols
V&V Date (YYYY-MM-DD)	2012.08.14
V&V Edition	1
V&V Disposition and Status	OK
V&V Charge Time	10.1508317

A.2 Comments