

V&V Reference Report

L2 ASCDS Version : 8.4.4

Observation 7355 - L2 Version 2
Chandra X-Ray Center

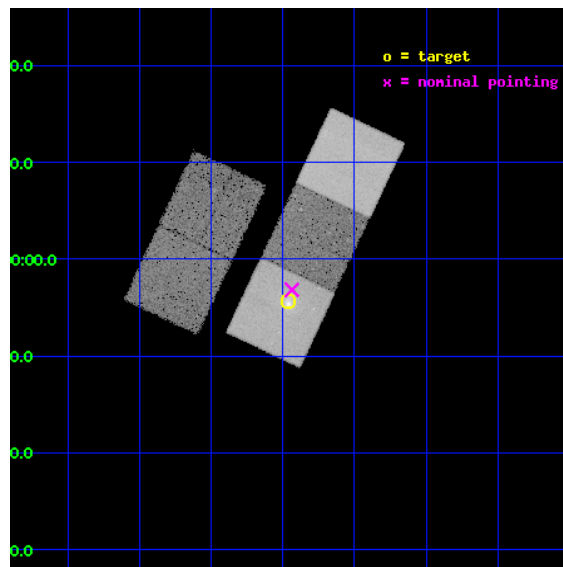
L2 Processing Date : Apr 29 2012

Contents

1	Front	2
2	OBI	3
2.1	OBI	3
2.1.1	Images	3
2.1.2	Bias	3
2.1.3	Parameters	4
2.1.4	Events	4
2.2	Compared Parameters	5
2.3	Aspect	6
2.4	Star Slots	9
2.4.1	Slot 3	9
2.4.2	Slot 4	10
2.4.3	Slot 5	11
2.4.4	Slot 6	12
2.4.5	Slot 7	13
2.5	FID Slots	14
2.5.1	Slot 0	14
2.5.2	Slot 1	15
2.5.3	Slot 2	16
A	Summary	17
A.1	Status	17
A.2	Comments	17

1 Front

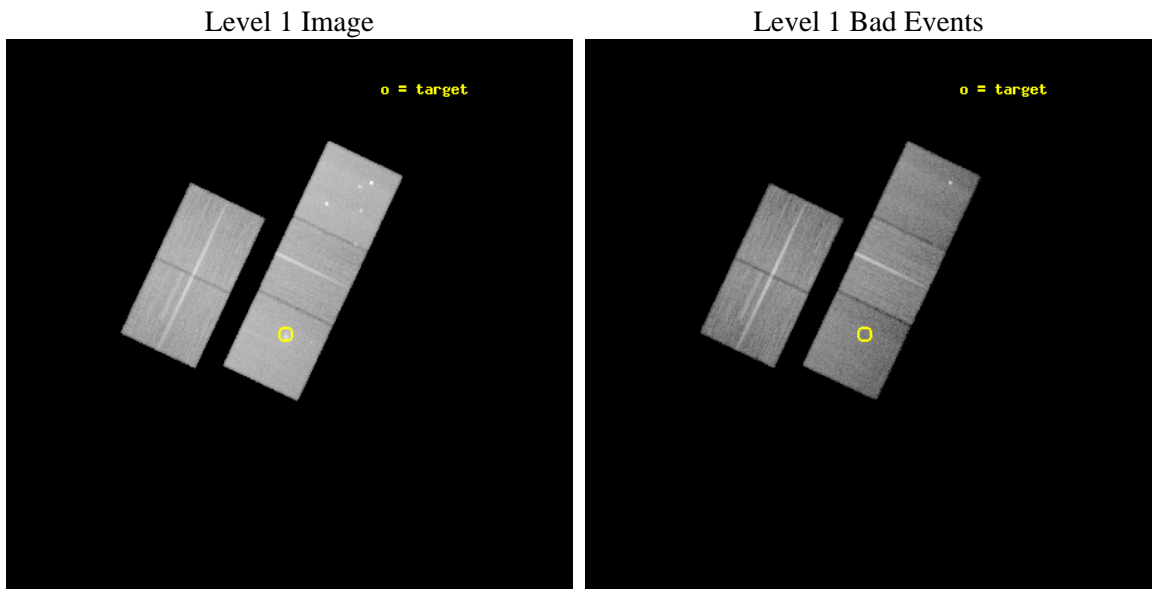
seq_num	800612	Sequence number
obs_id	7355	Observation id
title	The Halo Structure of RCS2-2327.4-0204	Proposal title
observer	Professor Michael Gladders	Principal investigator
object	RCS 2327-0204	Source name
dtcycle	0	
cycle	P	events from which exps? Prim/Second/Both
ra_targ	351.866667	Observer's specified target RA [deg]
dec_targ	-2.072444	Observer's specified target Dec [deg]
ra_nom	351.85928157192	Nominal RA [deg]
dec_nom	-2.0529735214429	Nominal Dec [deg]
roll_nom	115.33192815263	Nominal Roll [deg]
revision	2	Processing version of data
ontime	25035.600192547	Sum of GTIs [s]
liveltime	24708.49164509	Livetime [s]
ontime2	25032.459212244	Sum of GTIs [s]
ontime3	25032.459222138	Sum of GTIs [s]
ontime5	25035.600192547	Sum of GTIs [s]
ontime6	25032.45920229	Sum of GTIs [s]
ontime7	25035.600192547	Sum of GTIs [s]
l2events	284787	Number of level 2 events



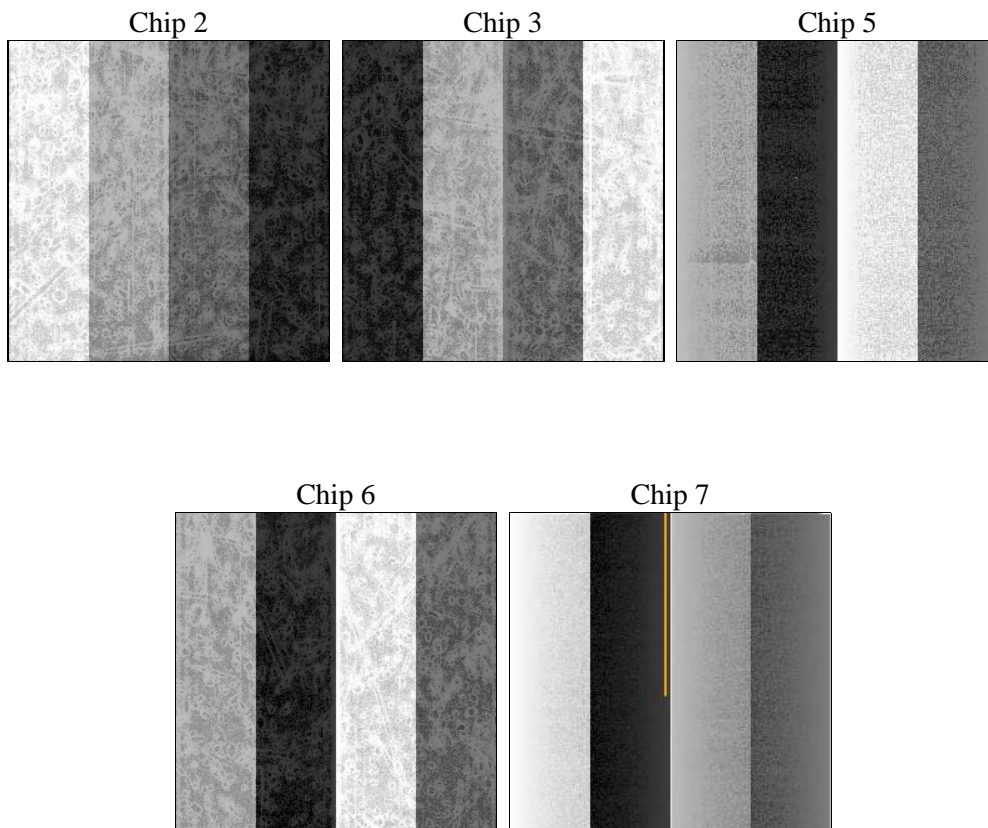
2 OBI

2.1 OBI

2.1.1 Images



2.1.2 Bias



2.1.3 Parameters

obi_num	0	Obi number	sched_exp_time	25000.000000	[s] Scheduled observation exposure time
ascdsver	8.4.4	Processing system revision	ontime	25035.600192547	Sum of GTIs [s]
caldbver	4.4.9	 	ontime2	25032.459212244	Sum of GTIs [s]
date	2012-04-29T13:39:31	Date and time of file creation	ontime3	25032.459222138	Sum of GTIs [s]
revision	2	Processing version of data	ontime5	25035.600192547	Sum of GTIs [s]
			ontime6	25032.45920229	Sum of GTIs [s]
			ontime7	25035.600192547	Sum of GTIs [s]
			l1events	1122460	Number of level 1 events

2.1.4 Events

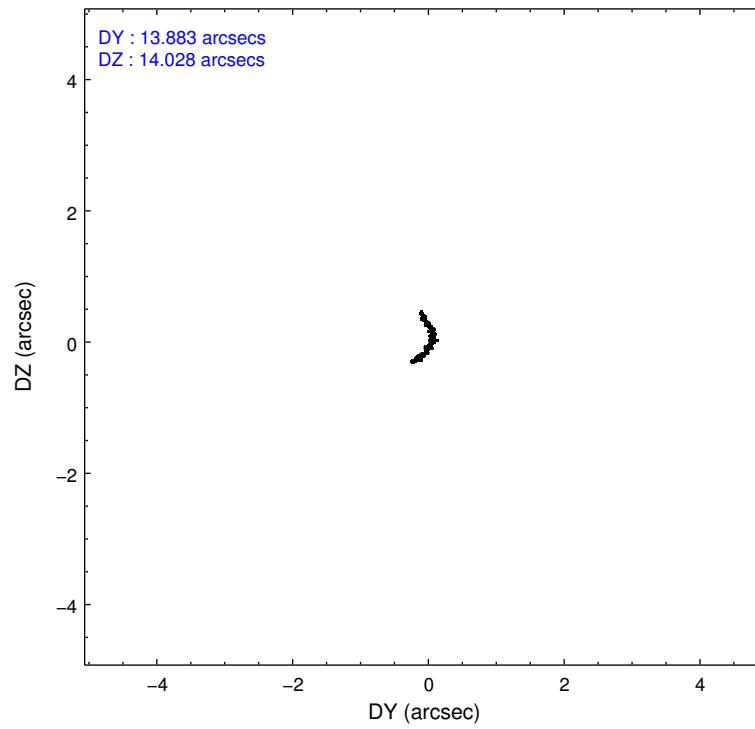
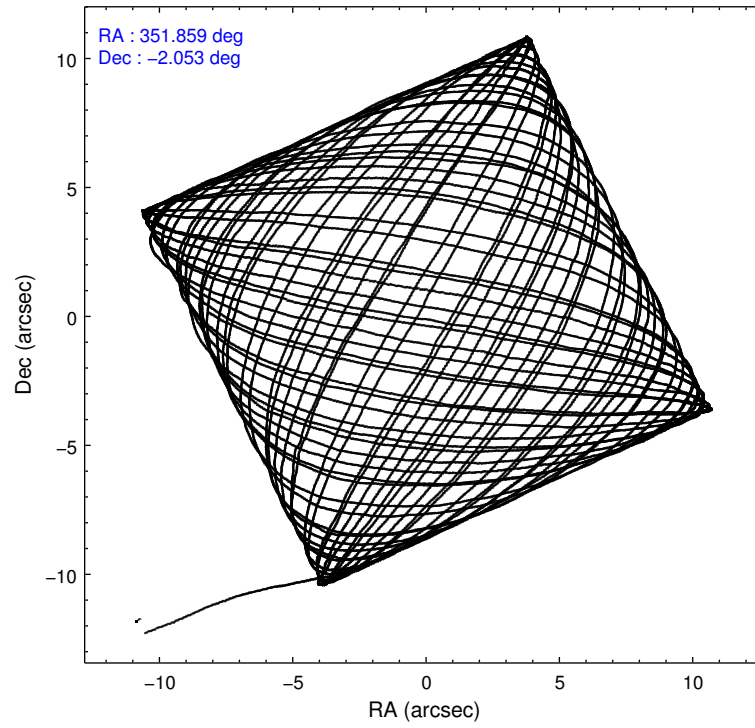
	ccd 2	ccd 3	ccd 5	ccd 6	ccd 7
level 1 events	205996	194450	281623	208769	231622
rejected events	186890	175333	141192	187929	123104
rejected %	90%	90%	50%	90%	53%

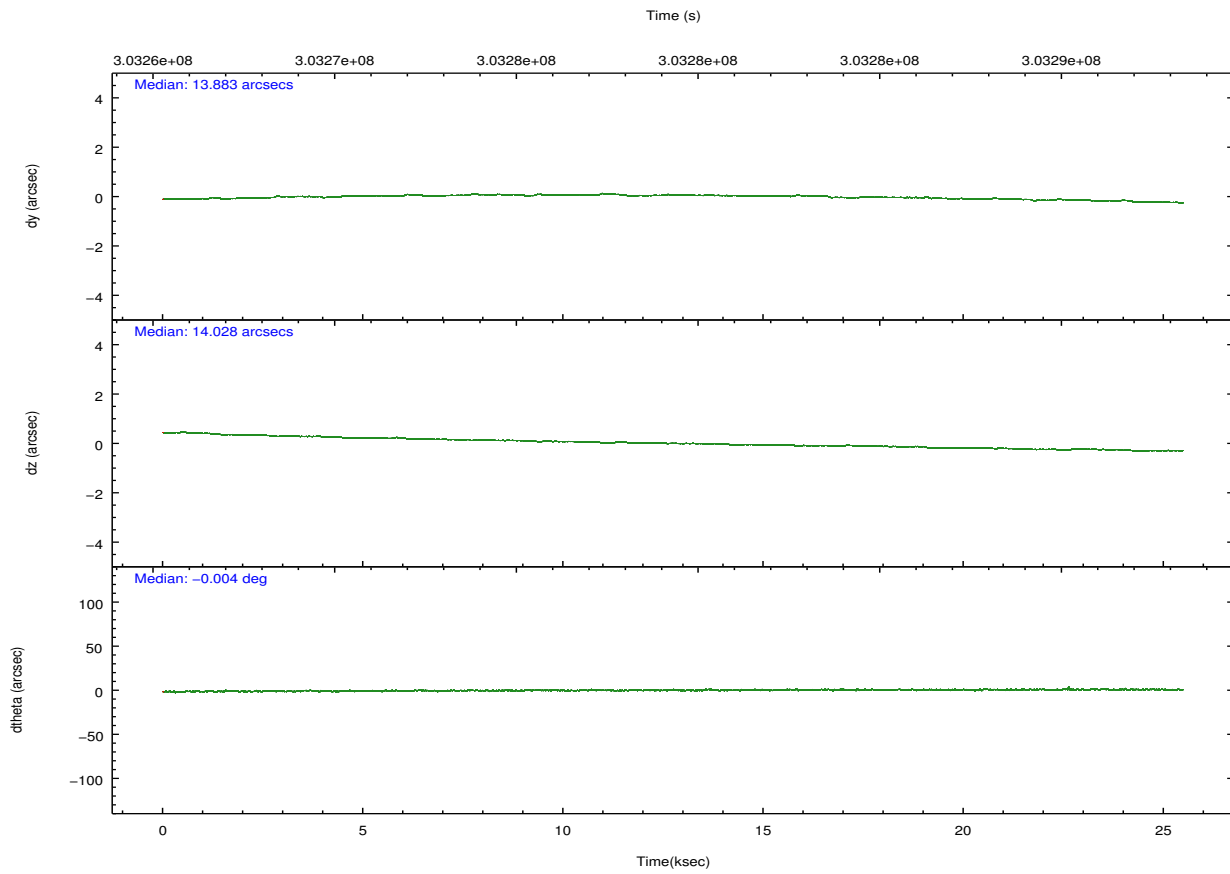
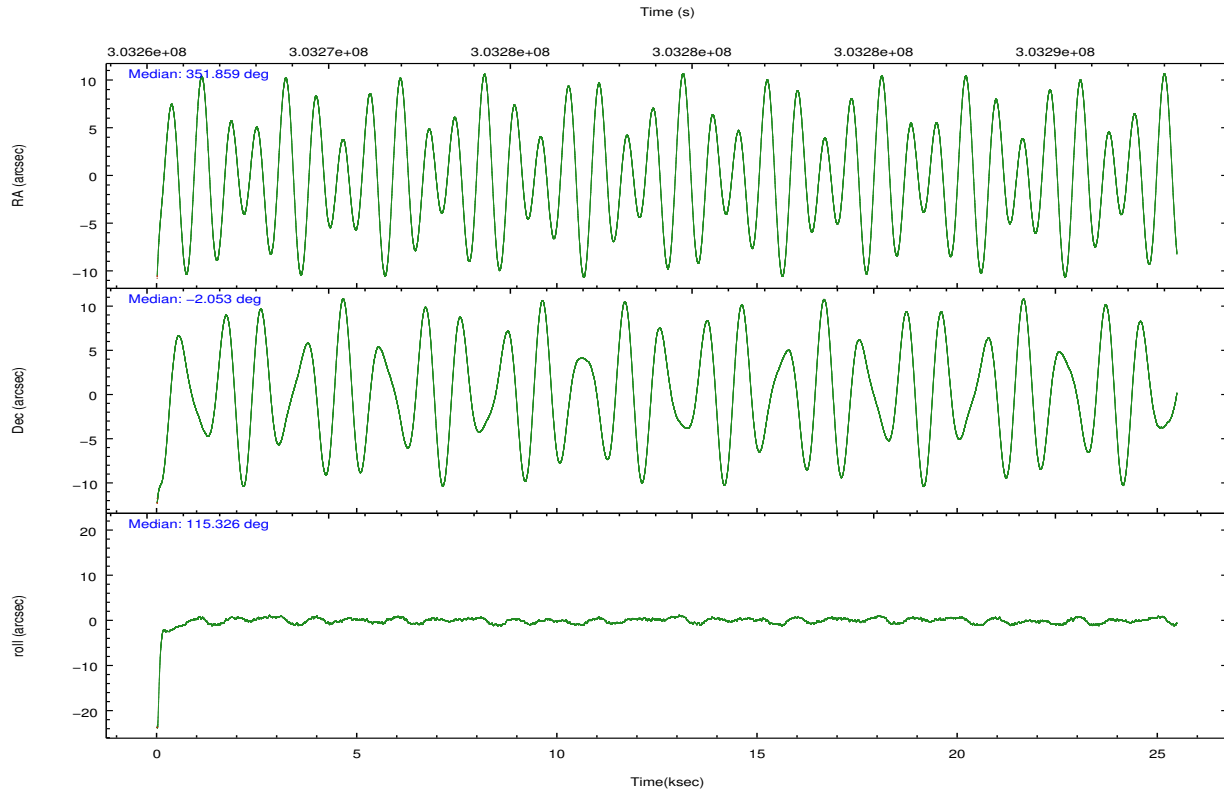
	ccd 2	ccd 3	ccd 5	ccd 6	ccd 7
grade 0 events	6867	6895	14635	7169	11464
	3%	3%	5%	3%	4%
grade 1 events	122	130	515	97	303
	0%	0%	0%	0%	0%
grade 2 events	4543	4099	42506	4553	22494
	2%	2%	15%	2%	9%
grade 3 events	2121	2171	5930	2347	10138
	1%	1%	2%	1%	4%
grade 4 events	2123	2143	5471	2238	9989
	1%	1%	1%	1%	4%
grade 5 events	6318	7881	22364	8116	23339
	3%	4%	7%	3%	10%
grade 6 events	3453	3810	71901	4540	54445
	1%	1%	25%	2%	23%
grade 7 events	180449	167321	118301	179709	99450
	87%	86%	42%	86%	42%

2.2 Compared Parameters

Parameter	Planned	Actual	Parameter	Planned	Actual
Instrument	ACIS	ACIS	Obspar format version number	7	7
Detector	ACIS-23567	ACIS-23567	Obspar file type	PREDICTED	ACTUAL
Grating	NONE	NONE	Obspar update status	NONE	UPDATED
Data mode	VFAINT	VFAINT	CCD I0 on	N	N
Observation mode	POINTING	POINTING	CCD I1 on	N	N
[deg] Pointing RA	351.881988	351.8592815719168	CCD I2 on	O1	Y
[deg] Pointing Dec	-2.068191	-2.052973521442864	CCD I3 on	O2	Y
[deg] Pointing Roll	115.176126	115.3319281526276	CCD S0 on	N	N
[mm] SIM focus pos	-0.684267	-0.6828225247311905	CCD S1 on	O4	Y
[mm] SIM defocus	0	0.001444936568705701	CCD S2 on	O3	Y
[mm] SIM translation stage pos	-190.132523	-190.1425803651734	CCD S3 on	Y	Y
[mm] SIM translation stage offset	0	0.01005778216563158	CCD S4 on	N	N
[s] Observation start time (MET)	303267050.184000	303265979.28636	CCD S5 on	N	N
Observation start date	2007-08-12T00:49:45	2007-08-12T00:32:59	Number of optional ACIS chips dropped	0	0
[s] Observation end time (MET)	303292050.184000	303293060.81266	On-chip summing requested	N	N
Observation end date	2007-08-12T07:46:25	2007-08-12T08:04:20	Subarray requested	NONE	NONE
Read mode	TIMED	TIMED	Alternating exposures requested	N	N
			[s] Primary exposure time	0.000000	3.1

2.3 Aspect



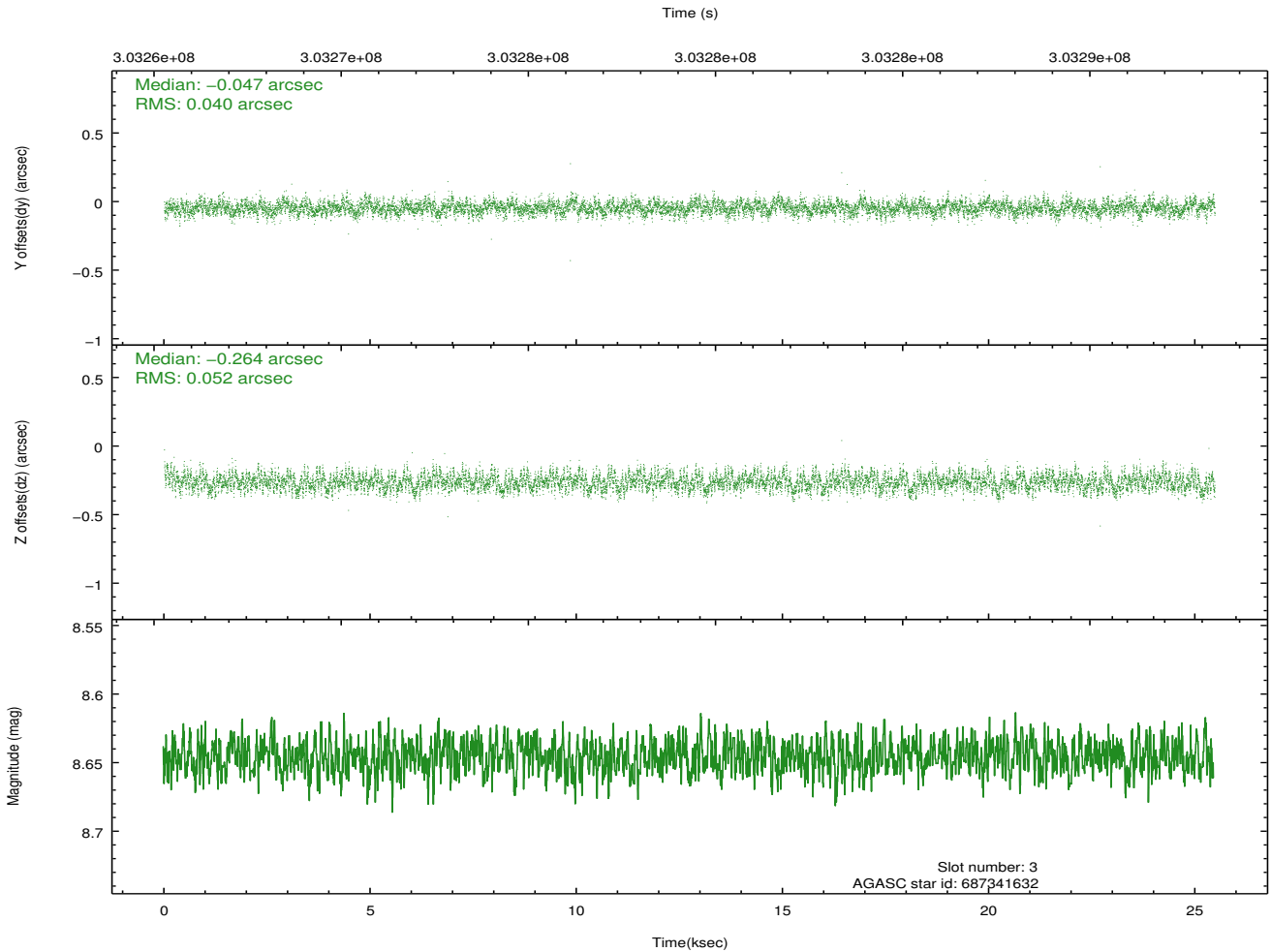
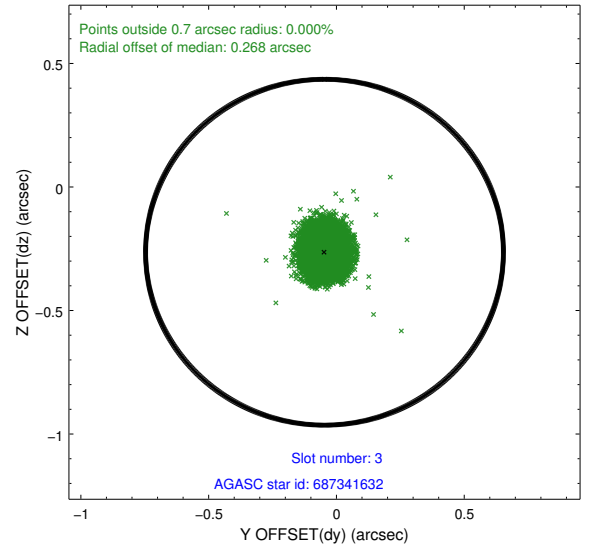
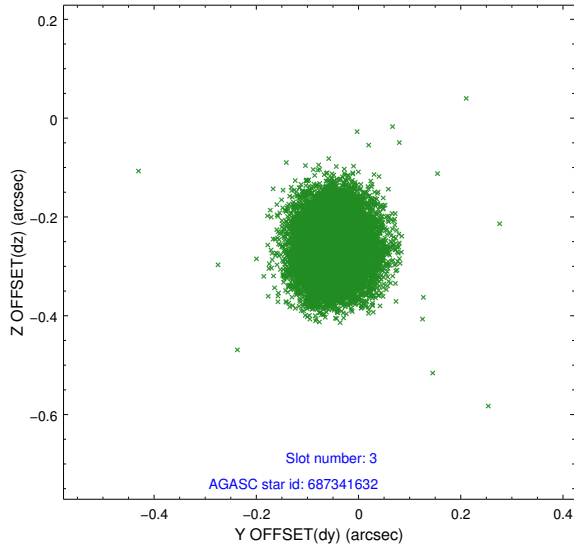


Slot Statistics

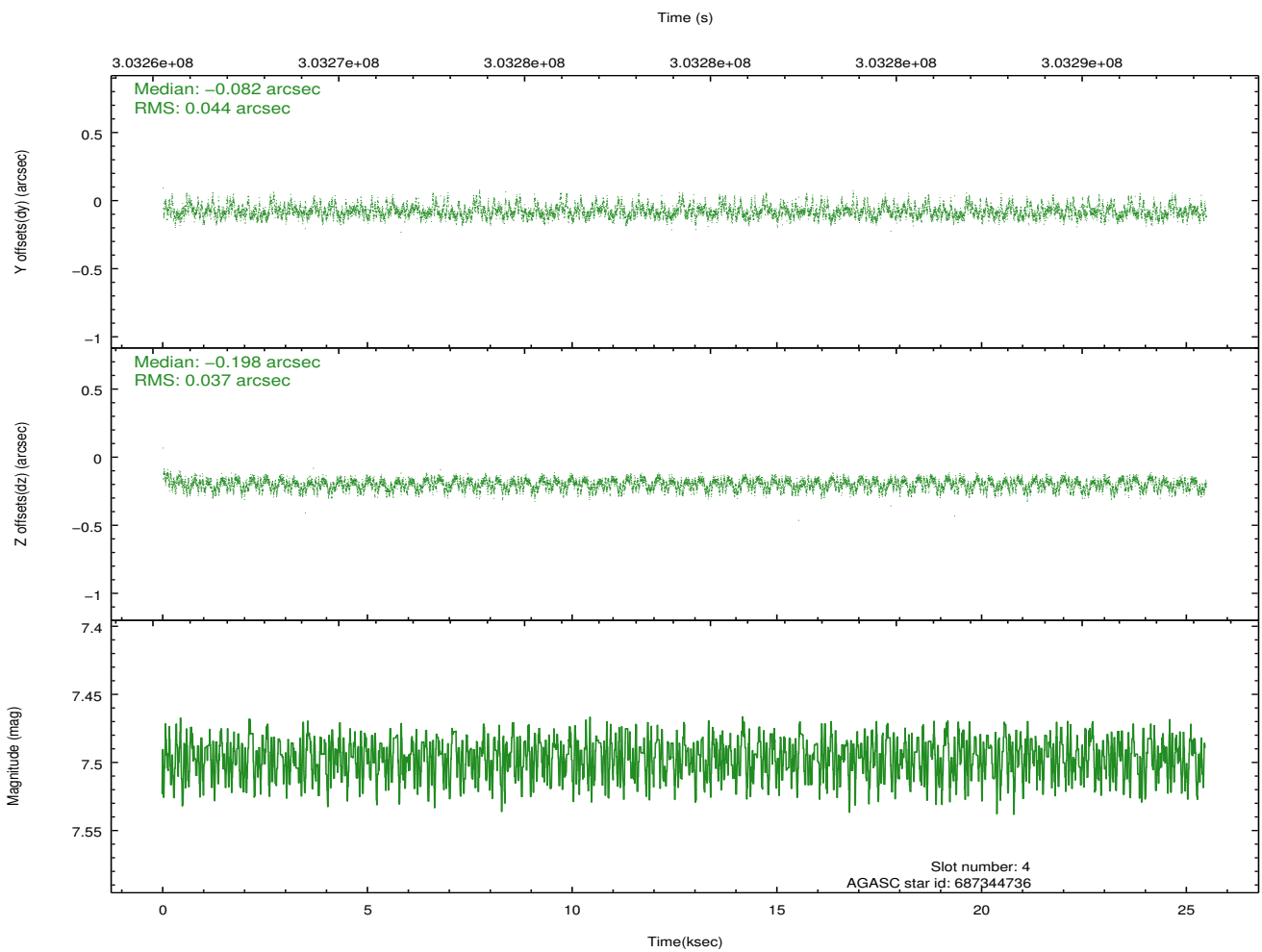
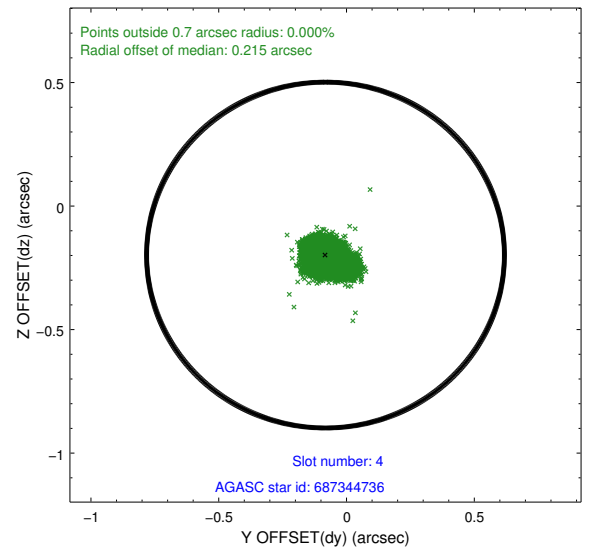
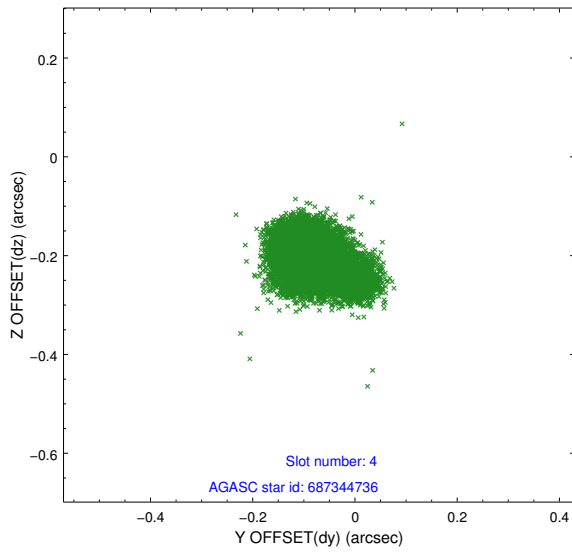
slot	status	id	mag	n_pts	med_dy	med_dz	dr1	dr2	ra	dec	mean_y	mean_z
0	FID	ACIS-S-2	7.10	6212	-0.060	-0.056	0.010	0.017	0.000000	0.000000	-766.85	-1735.40
1	FID	ACIS-S-4	7.19	6214	0.195	0.044	0.007	0.017	0.000000	0.000000	2146.62	173.06
2	FID	ACIS-S-5	7.22	6213	-0.166	0.021	0.009	0.015	0.000000	0.000000	-1819.66	166.84
3	GUIDE	687341632	8.65	12420	-0.047	-0.264	0.071	0.113	351.229179	-2.018486	1160.63	2049.73
4	GUIDE	687344736	7.50	12424	-0.082	-0.198	0.059	0.104	351.162302	-1.741374	2165.33	1842.71
5	GUIDE	687346688	8.90	12420	0.088	0.138	0.076	0.124	352.009101	-1.468290	1760.53	-1332.23
6	GUIDE	687349936	8.41	12419	-0.151	0.341	0.075	0.123	352.258836	-1.470329	1371.33	-2142.49
7	GUIDE	687741896	7.57	12423	0.187	-0.011	0.056	0.087	352.112594	-2.653619	-2259.77	145.98

2.4 Star Slots

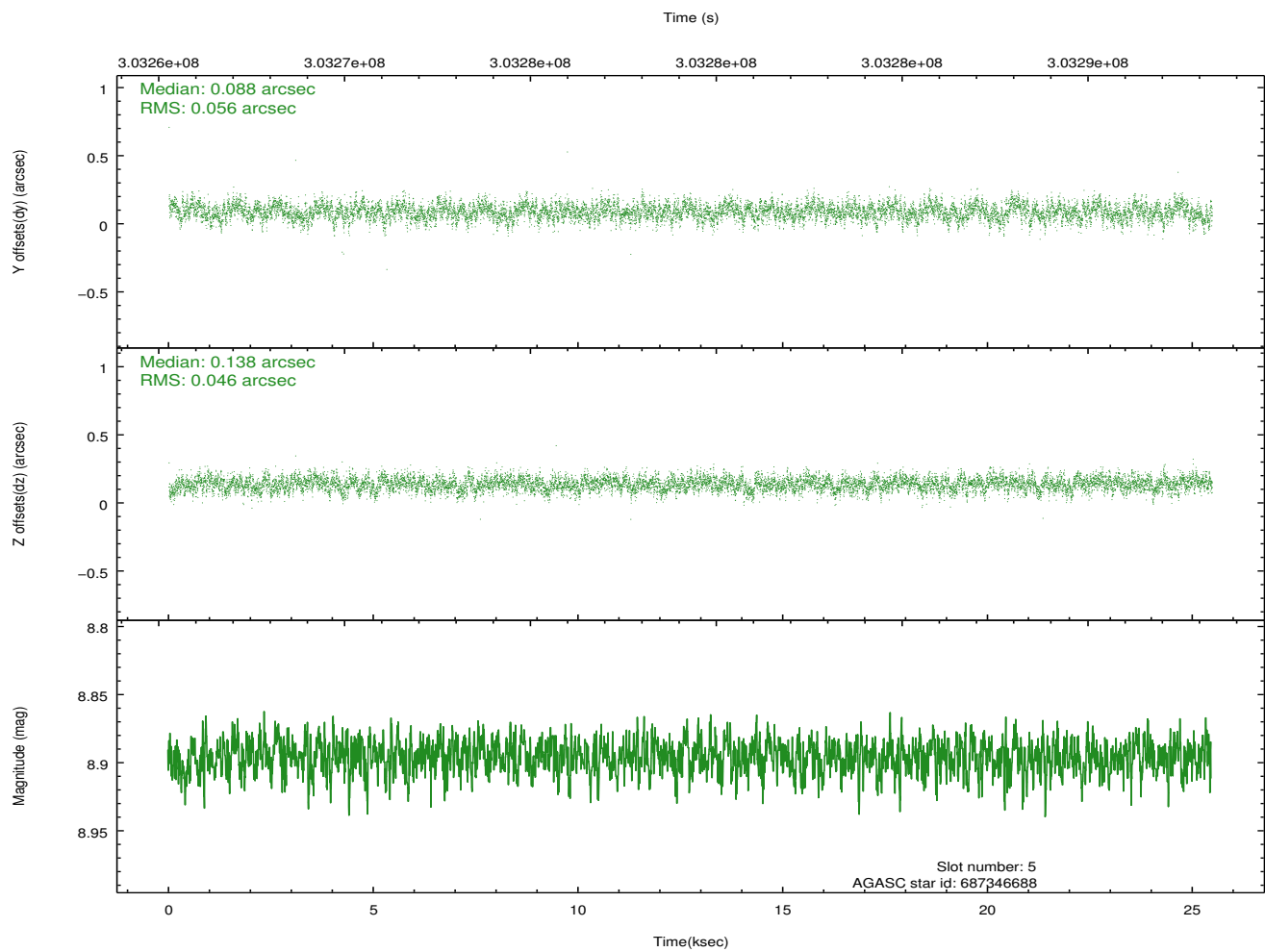
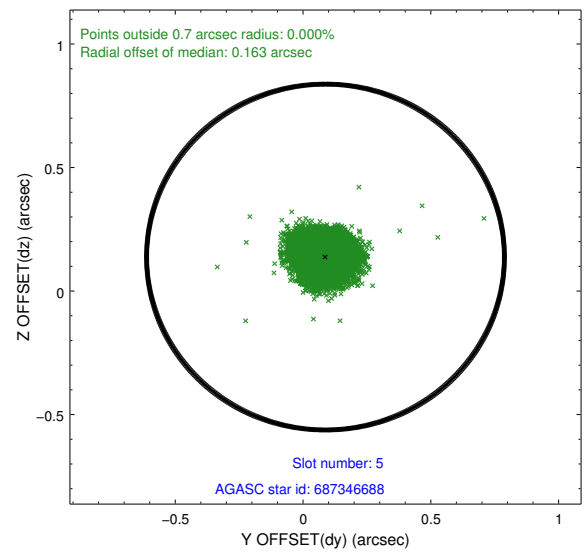
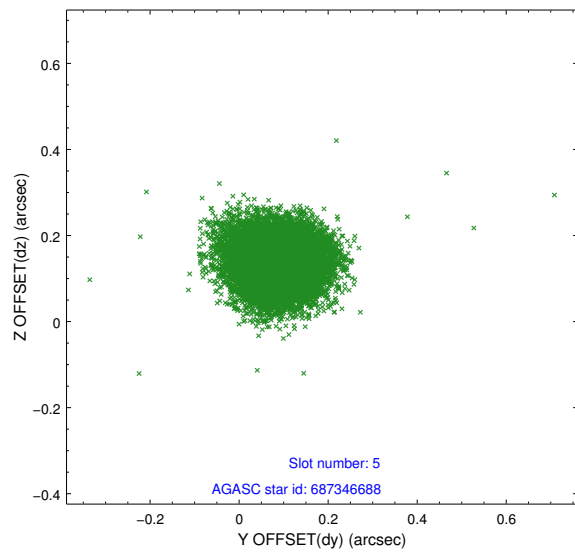
2.4.1 Slot 3



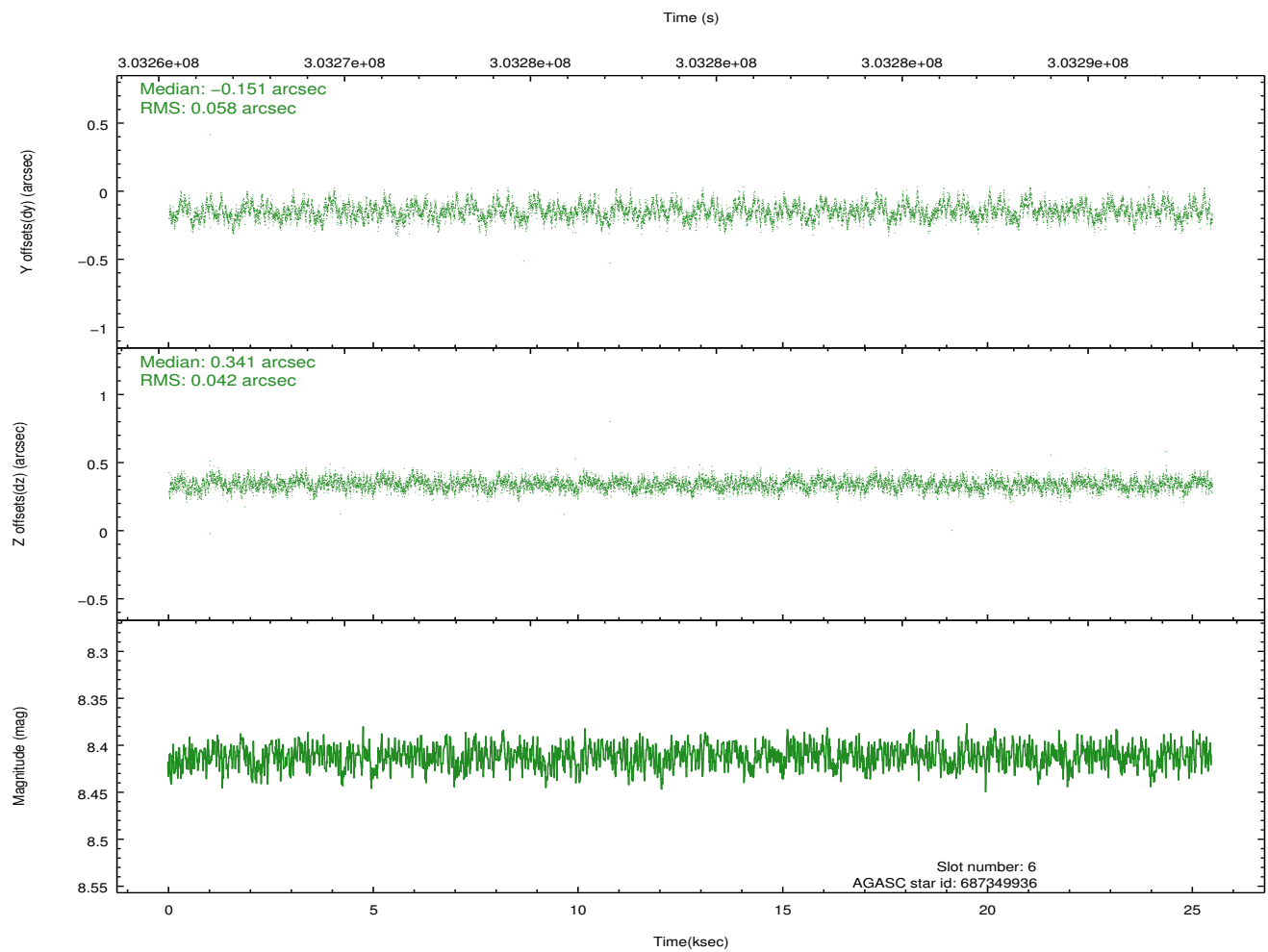
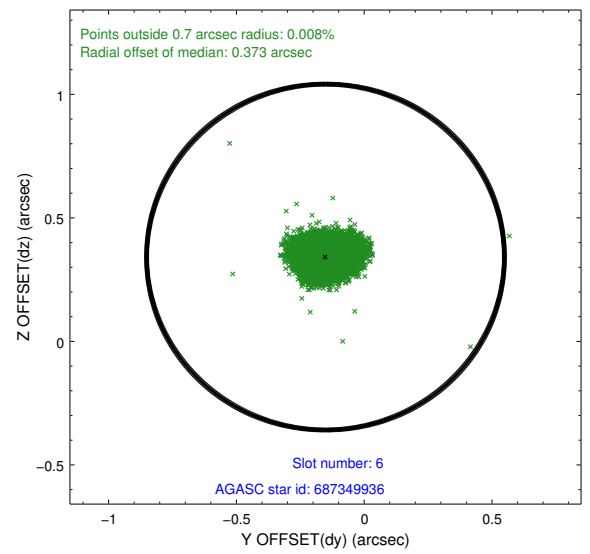
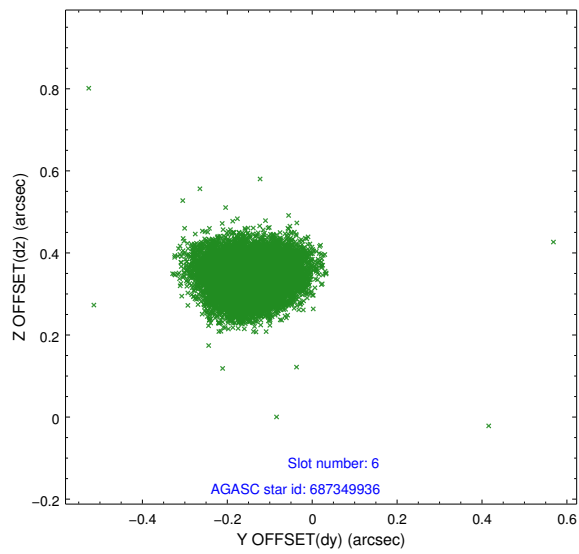
2.4.2 Slot 4



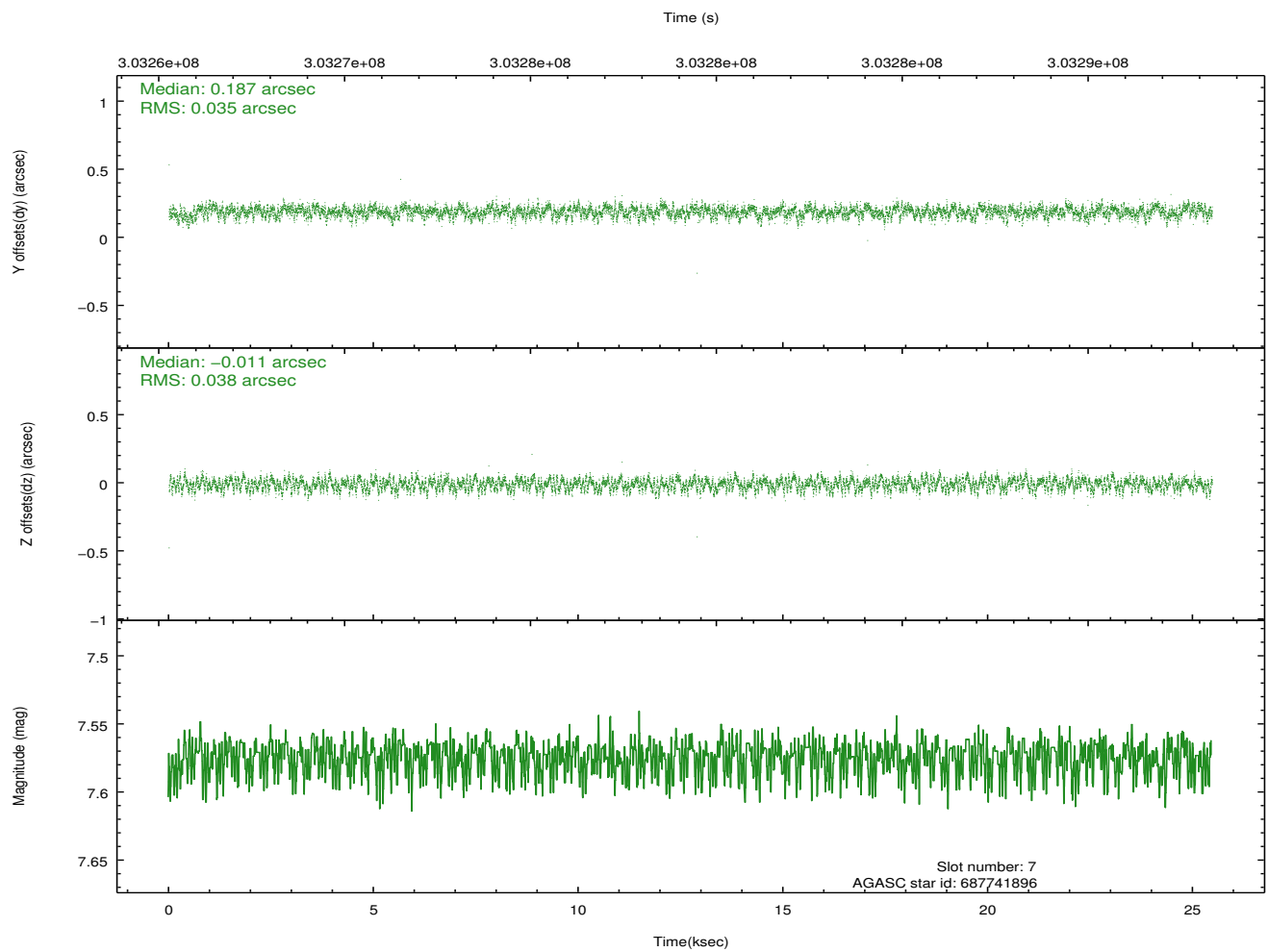
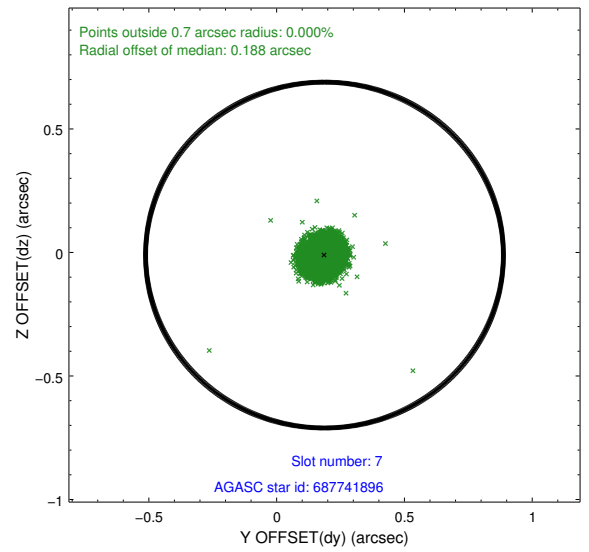
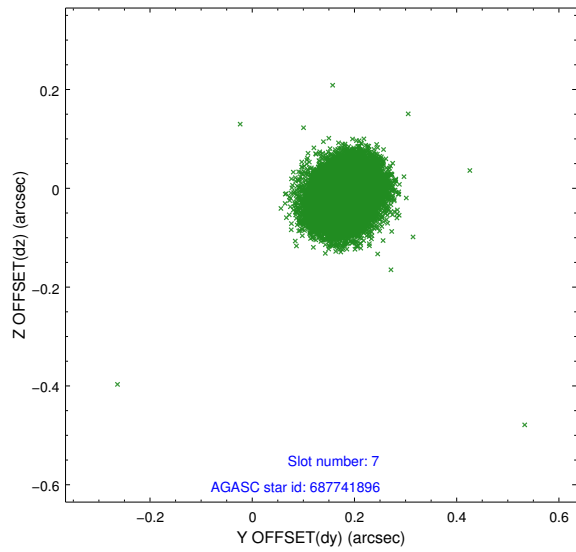
2.4.3 Slot 5



2.4.4 Slot 6

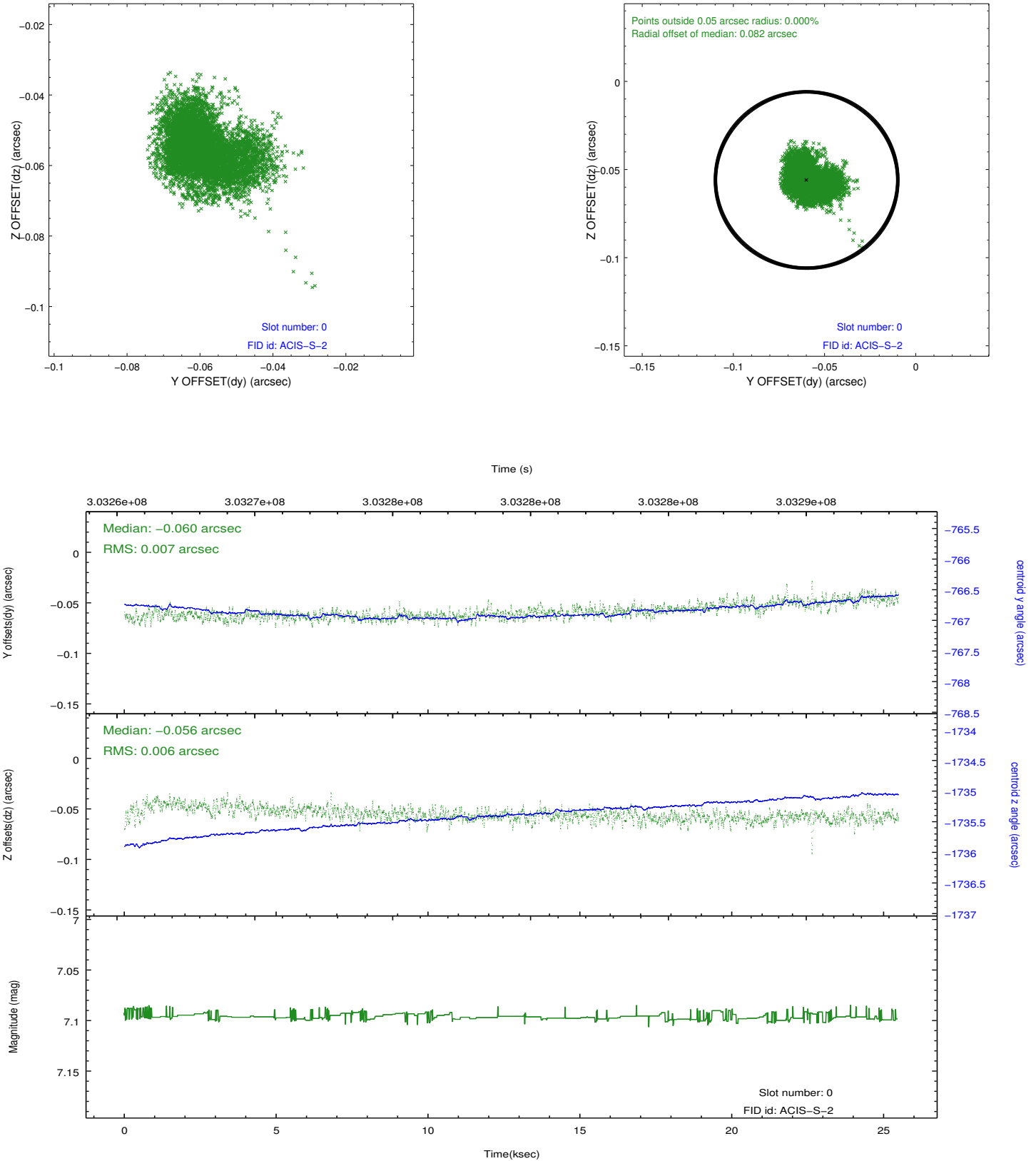


2.4.5 Slot 7

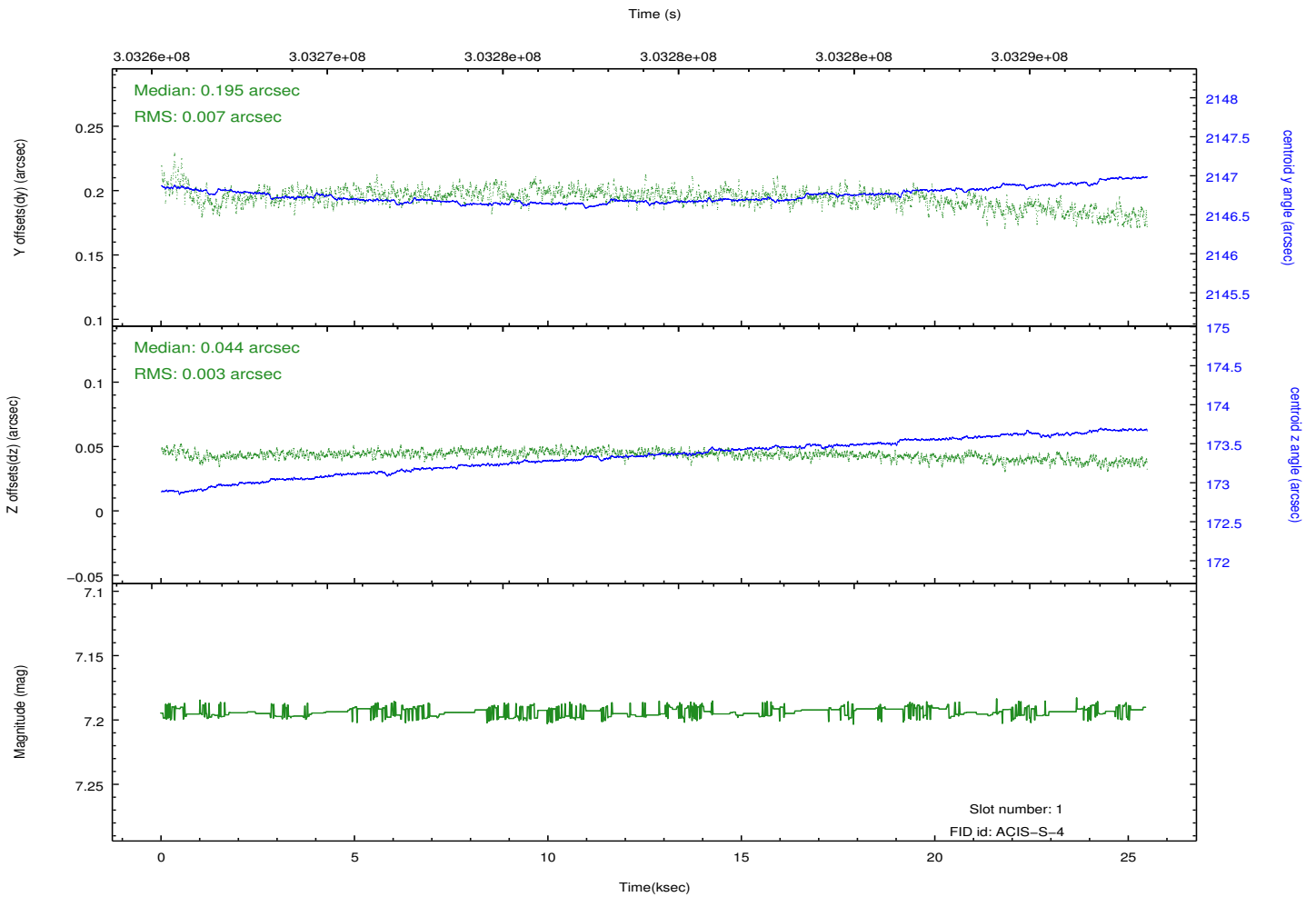
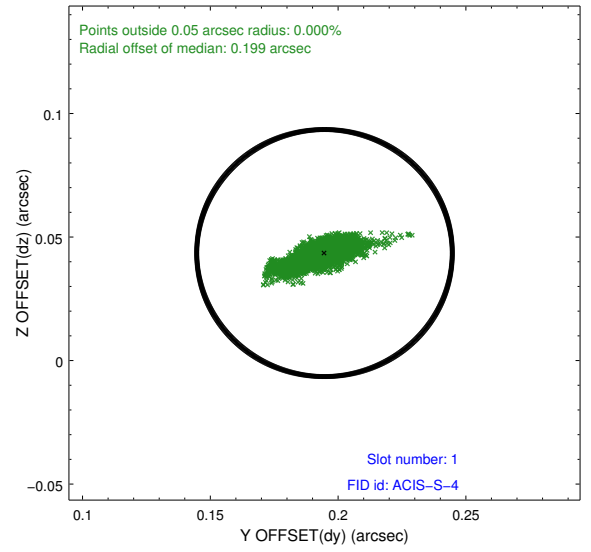
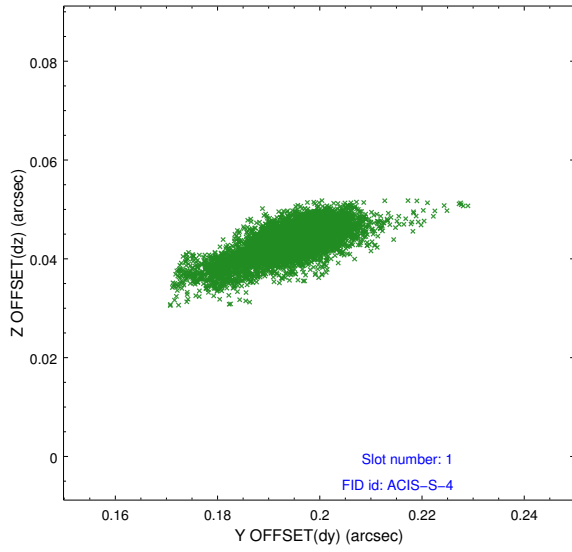


2.5 FID Slots

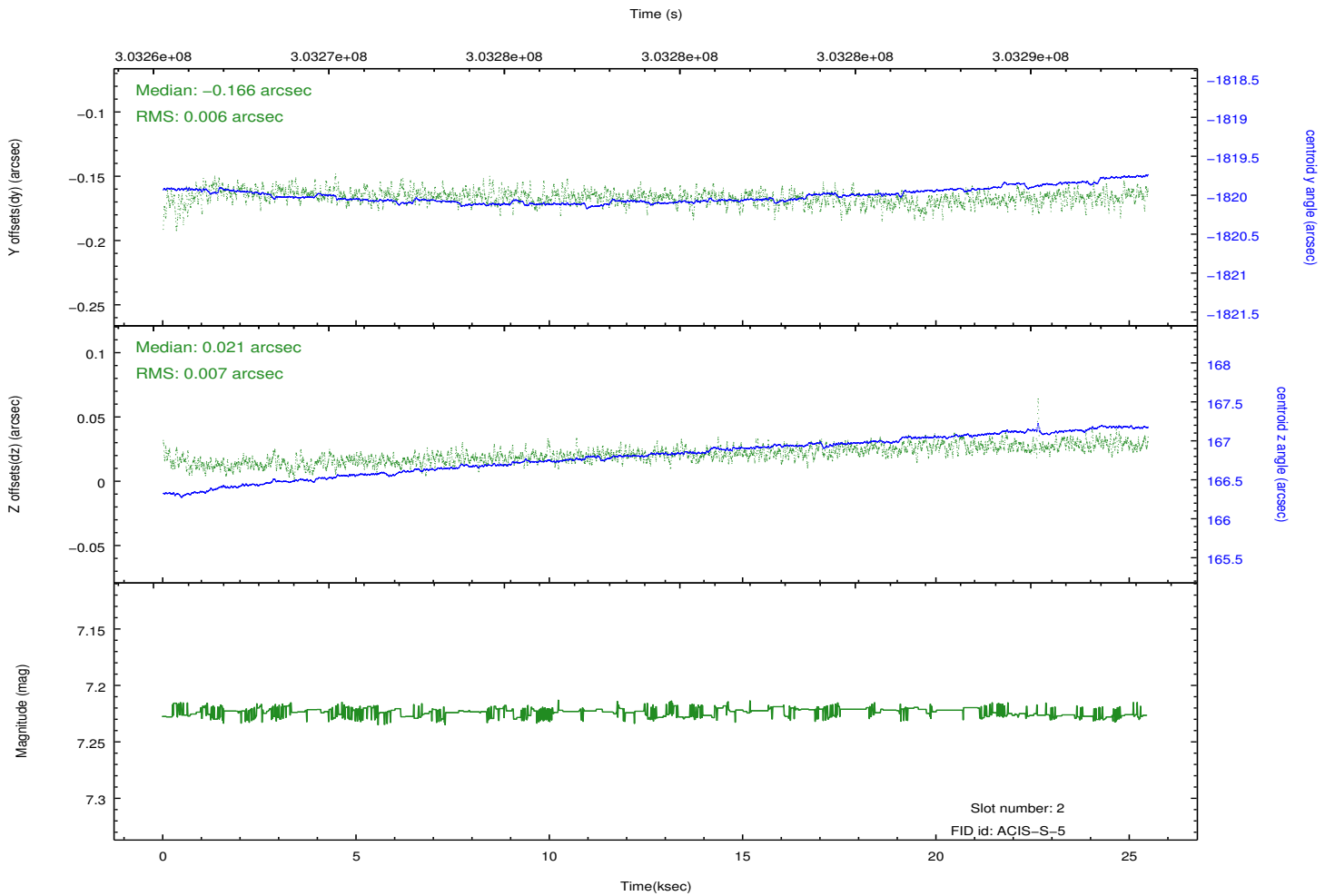
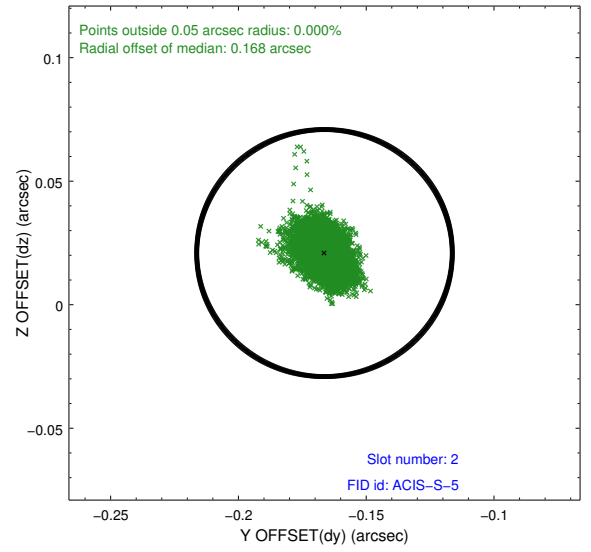
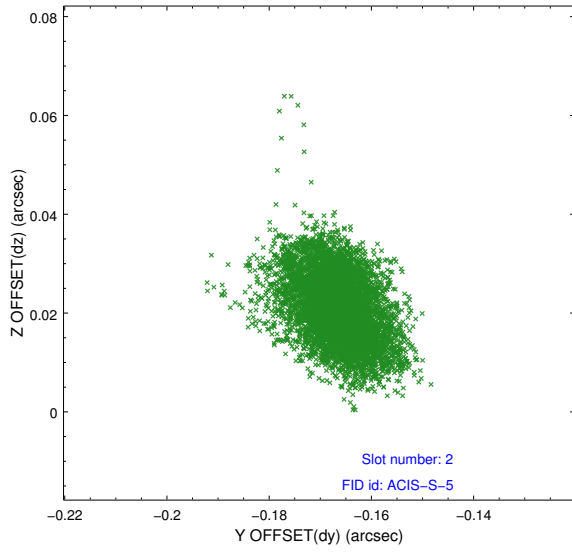
2.5.1 Slot 0



2.5.2 Slot 1



2.5.3 Slot 2



A Summary

A.1 Status

V&V Scientist	Jen Lauer
V&V Date (YYYY-MM-DD)	2012.05.02
V&V Edition	1
V&V Disposition and Status	OK
V&V Charge Time	25.0356001

A.2 Comments

Joint Proposal: CX0-HST