

V&V Reference Report

L2 ASCDS Version : 8.4.4

Observation 7415 - L2 Version 2
Chandra X-Ray Center

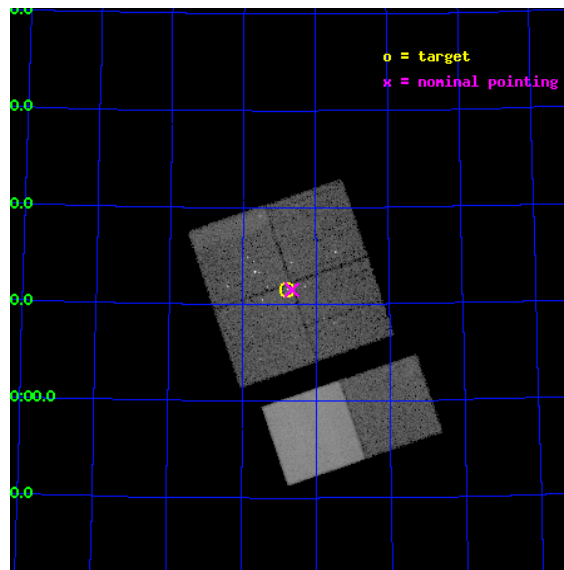
L2 Processing Date : Apr 29 2012

Contents

1	Front	2
2	OBI	3
2.1	OBI	3
2.1.1	Images	3
2.1.2	Bias	3
2.1.3	Parameters	4
2.1.4	Events	4
2.2	Compared Parameters	5
2.3	Aspect	6
2.4	Star Slots	9
2.4.1	Slot 3	9
2.4.2	Slot 4	10
2.4.3	Slot 5	11
2.4.4	Slot 6	12
2.4.5	Slot 7	13
2.5	FID Slots	14
2.5.1	Slot 0	14
2.5.2	Slot 1	15
2.5.3	Slot 2	16
A	Summary	17
A.1	Status	17
A.2	Comments	17

1 Front

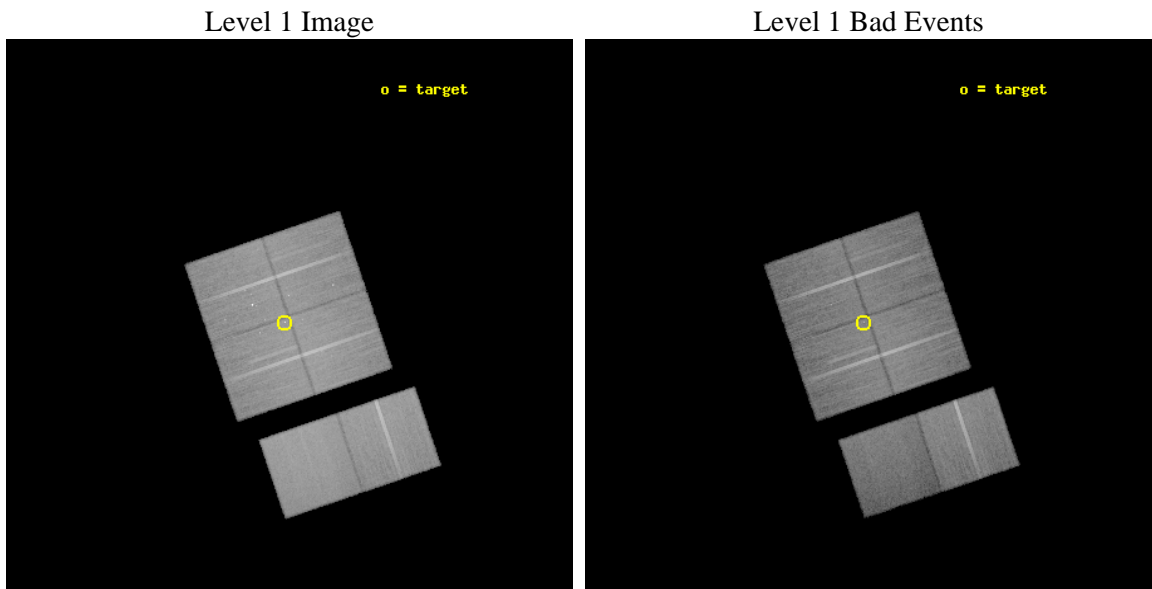
seq_num	200428	Sequence number
obs_id	7415	Observation id
title	X-Ray Emission from Low-Mass Protostars in Small Dark Clouds	Propo
observer	Dr. Theodore Simon	Principal investigator
object	L1251B-VLA3	Source name
dtcycle	0	
cycle	P	events from which exps? Prim/Second/Both
ra_targ	339.695833	Observer's specified target RA [deg]
dec_targ	75.191667	Observer's specified target Dec [deg]
ra_nom	339.66425656666	Nominal RA [deg]
dec_nom	75.191880735237	Nominal Dec [deg]
roll_nom	161.23922998813	Nominal Roll [deg]
revision	2	Processing version of data
ontime	30044.799888134	Sum of GTIs [s]
livetime	29664.354541144	Livetime [s]
ontime0	30041.558897853	Sum of GTIs [s]
ontime1	30038.317937613	Sum of GTIs [s]
ontime2	30041.558898032	Sum of GTIs [s]
ontime3	30044.799888134	Sum of GTIs [s]
ontime6	30041.558897793	Sum of GTIs [s]
ontime7	30044.799888134	Sum of GTIs [s]
l2events	221048	Number of level 2 events



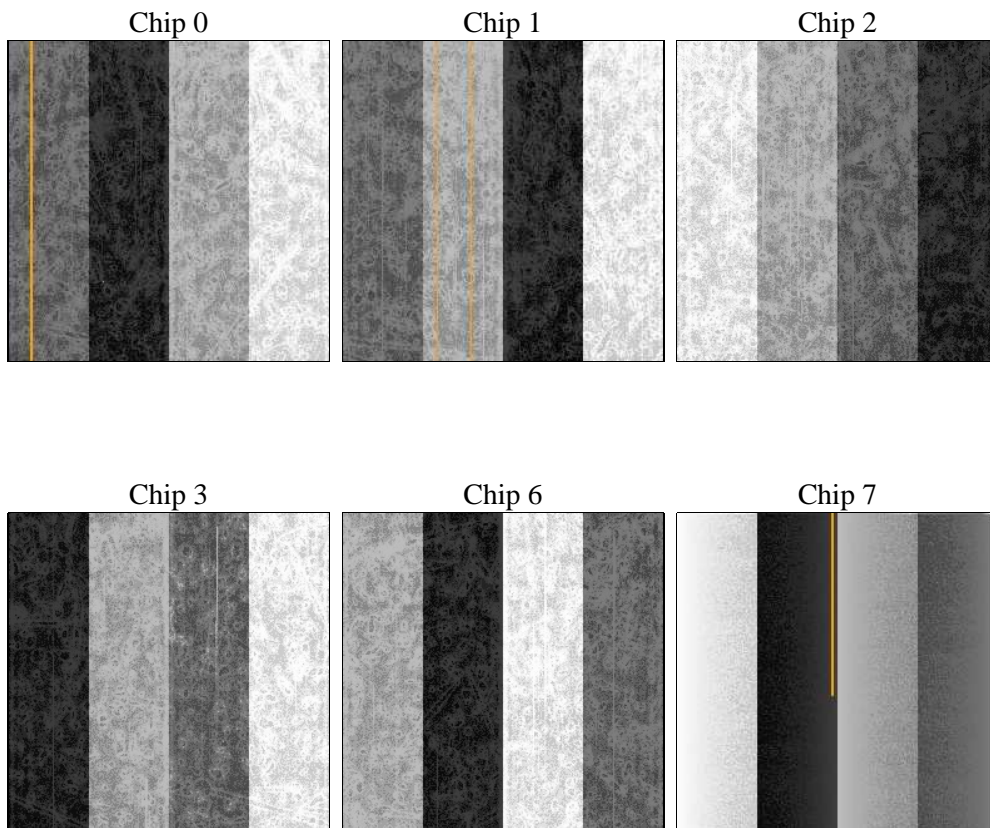
2 OBI

2.1 OBI

2.1.1 Images



2.1.2 Bias



2.1.3 Parameters

obi_num	0	Obi number	sched_exp_time	30000.000000	[s] Scheduled observation exposure time
ascdsver	8.4.4	Processing system revision	ontime	30044.799888134	Sum of GTIs [s]
caldbver	4.4.9	 	ontime0	30041.558897853	Sum of GTIs [s]
date	2012-04-29T13:55:24	Date and time of file creation	ontime1	30038.317937613	Sum of GTIs [s]
revision	2	Processing version of data	ontime2	30041.558898032	Sum of GTIs [s]
			ontime3	30044.799888134	Sum of GTIs [s]
			ontime6	30041.558897793	Sum of GTIs [s]
			ontime7	30044.799888134	Sum of GTIs [s]
			l1events	1471928	Number of level 1 events

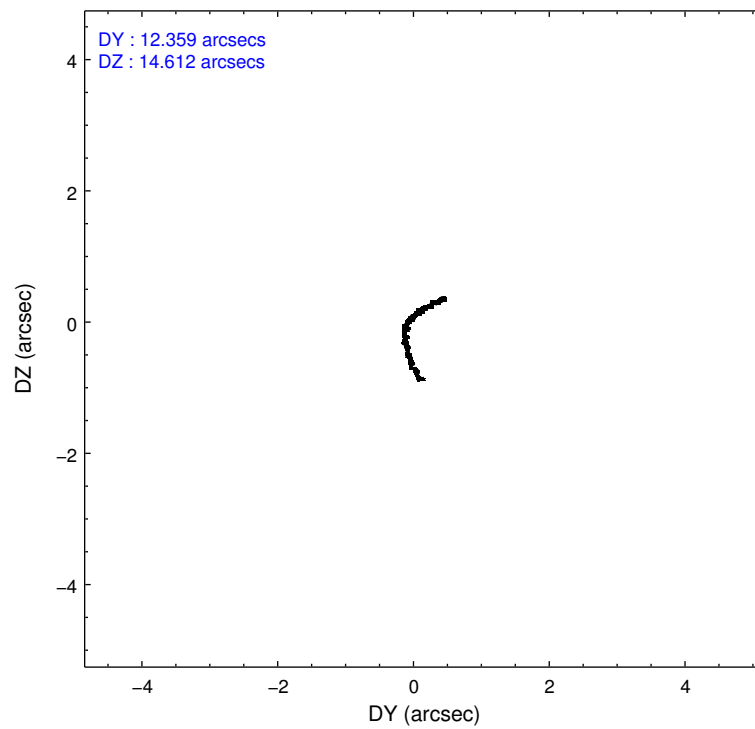
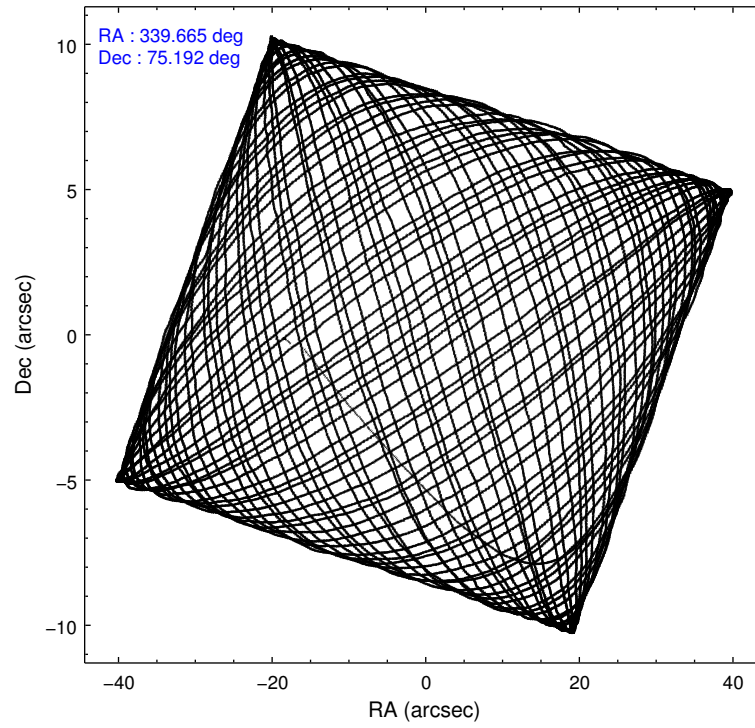
2.1.4 Events

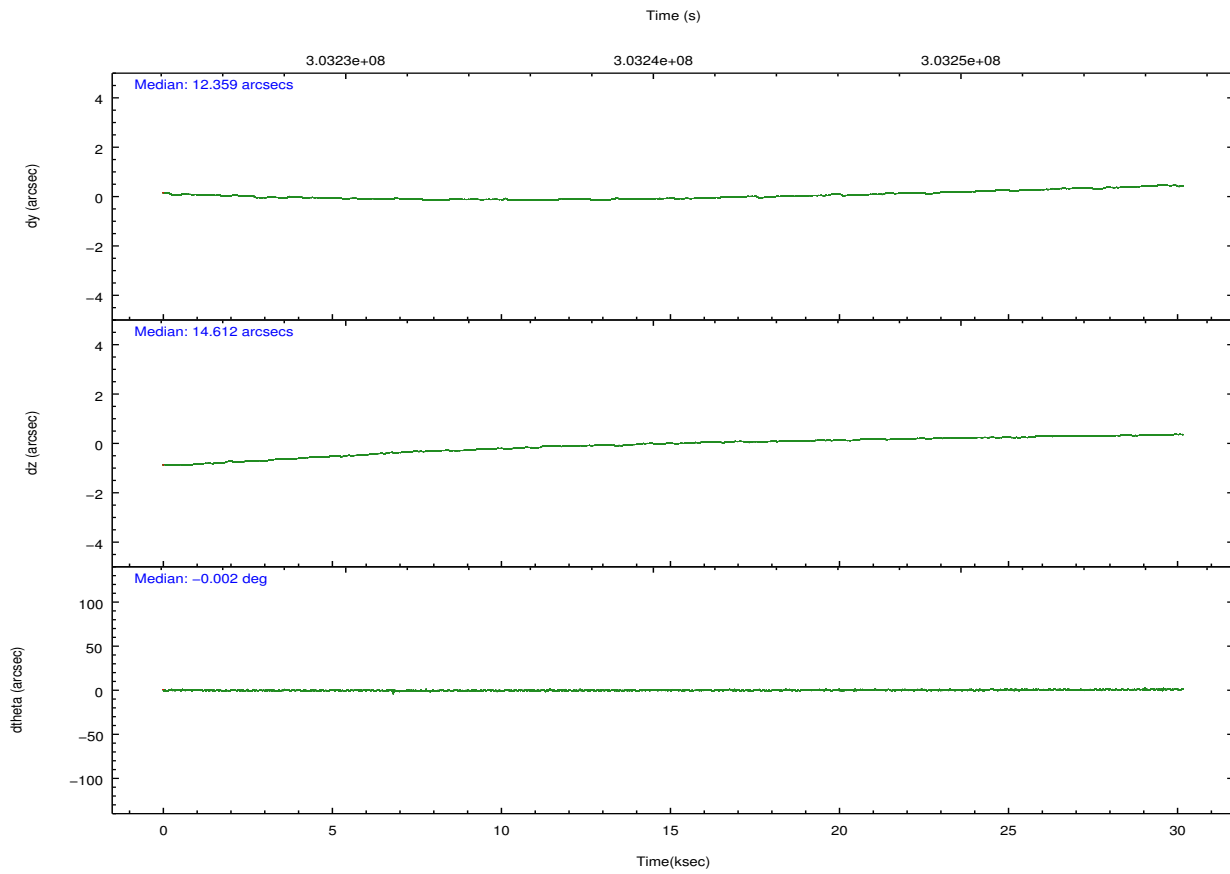
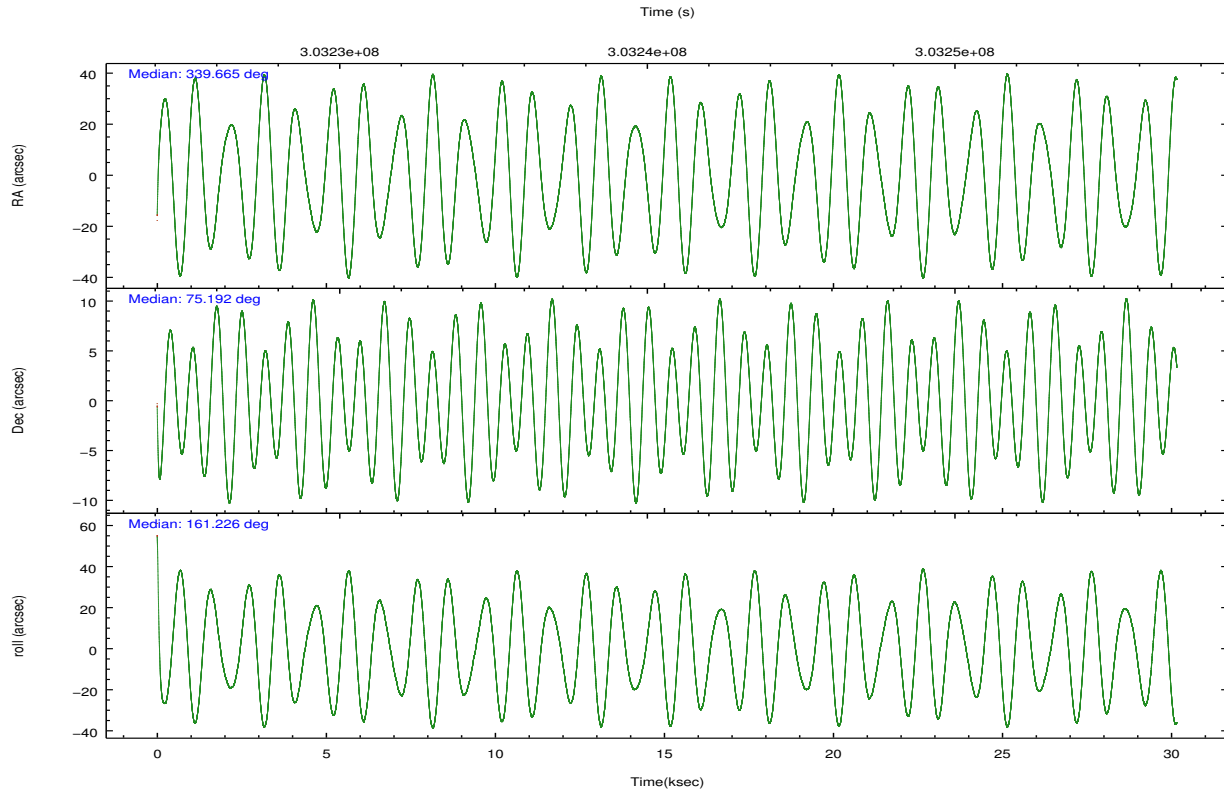
	ccd 0	ccd 1	ccd 2	ccd 3	ccd 6	ccd 7		ccd 0	ccd 1	ccd 2	ccd 3	ccd 6	ccd 7
level 1 events	225021	229977	255978	241620	254660	264672	grade 0 events	8655	12266	8255	8782	8314	10748
rejected events	201223	200061	233155	217718	230189	144770		3%	5%	3%	3%	3%	4%
rejected %	89%	86%	91%	90%	90%	54%	grade 1 events	118	177	133	199	107	279
								0%	0%	0%	0%	0%	0%
							grade 2 events	5532	6149	5378	5051	5568	24109
								2%	2%	2%	2%	2%	9%
							grade 3 events	2672	3018	2418	2629	2669	10869
								1%	1%	0%	1%	1%	4%
							grade 4 events	2471	2971	2507	2621	2615	10733
								1%	1%	0%	1%	1%	4%
							grade 5 events	8085	8984	7809	9615	9979	27362
								3%	3%	3%	3%	3%	10%
							grade 6 events	4471	5515	4266	4822	5310	63462
								1%	2%	1%	1%	2%	23%
							grade 7 events	193017	190897	225212	207901	220098	117110
								85%	83%	87%	86%	86%	44%

2.2 Compared Parameters

Parameter	Planned	Actual	Parameter	Planned	Actual
Instrument	ACIS	ACIS	Obspar format version number	7	7
Detector	ACIS-012367	ACIS-012367	Obspar file type	PREDICTED	ACTUAL
Grating	NONE	NONE	Obspar update status	NONE	UPDATED
Data mode	VFAINT	VFAINT	CCD I0 on	Y	Y
Observation mode	POINTING	POINTING	CCD I1 on	Y	Y
[deg] Pointing RA	339.769717	339.6642565666581	CCD I2 on	Y	Y
[deg] Pointing Dec	75.197310	75.19188073523692	CCD I3 on	Y	Y
[deg] Pointing Roll	160.928564	161.2392299881272	CCD S0 on	N	N
[mm] SIM focus pos	-0.782348	-0.7809083437167272	CCD S1 on	N	N
[mm] SIM defocus	0	0.001439871863259334	CCD S2 on	O1	Y
[mm] SIM translation stage pos	-233.592463	-233.5874344608287	CCD S3 on	O2	Y
[mm] SIM translation stage offset	0	-0.005018542100998502	CCD S4 on	N	N
[s] Observation start time (MET)	303225727.184000	303224719.44688	CCD S5 on	N	N
Observation start date	2007-08-11T13:21:02	2007-08-11T13:05:19	Number of optional ACIS chips dropped	0	0
[s] Observation end time (MET)	303255727.184000	303256459.59841	On-chip summing requested	N	N
Observation end date	2007-08-11T21:41:02	2007-08-11T21:54:19	Subarray requested	NONE	NONE
Read mode	TIMED	TIMED	Alternating exposures requested	N	N
			[s] Primary exposure time	0.000000	3.2

2.3 Aspect



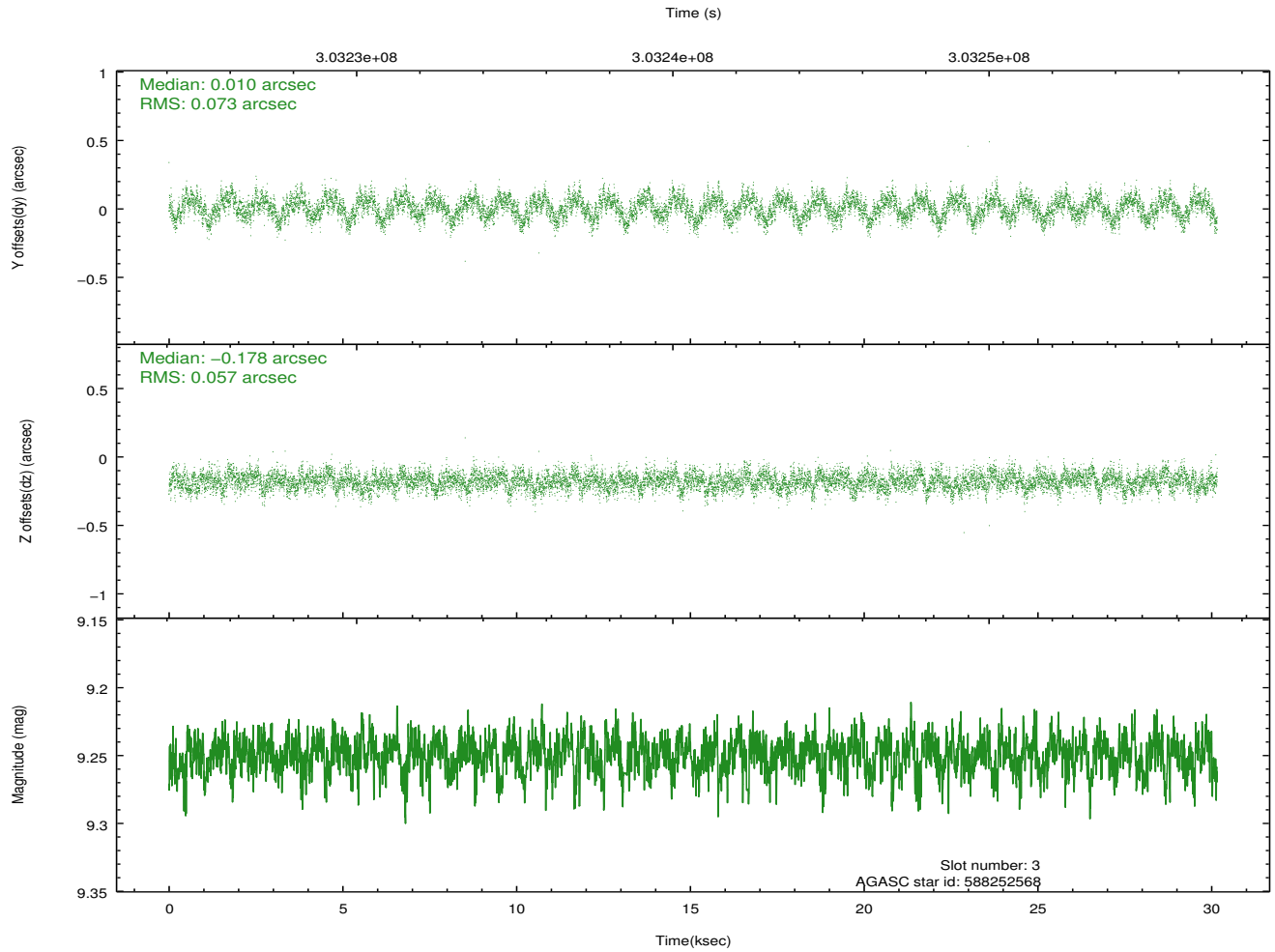
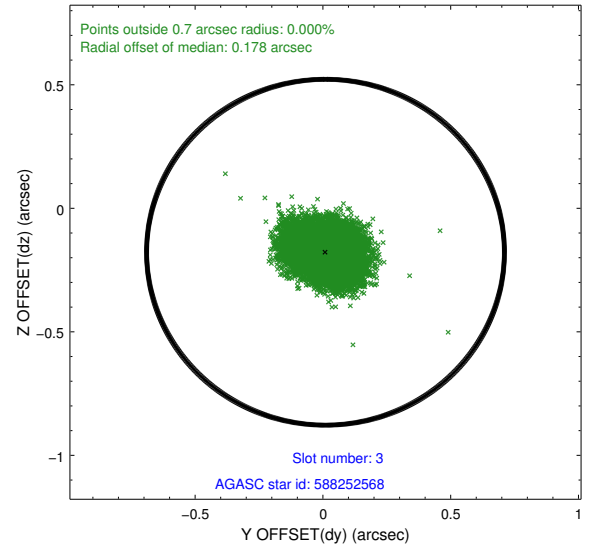
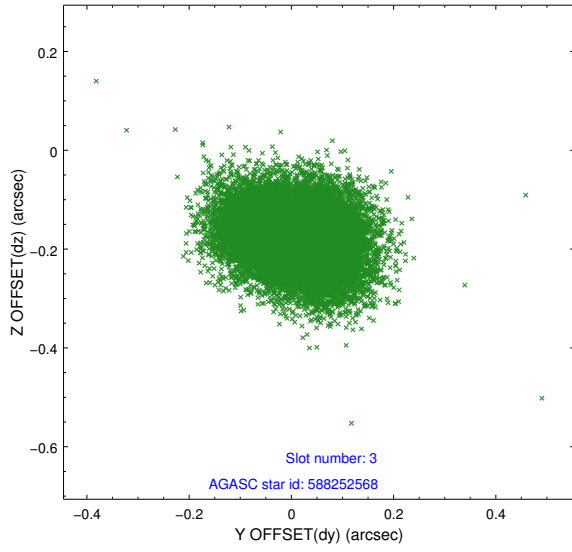


Slot Statistics

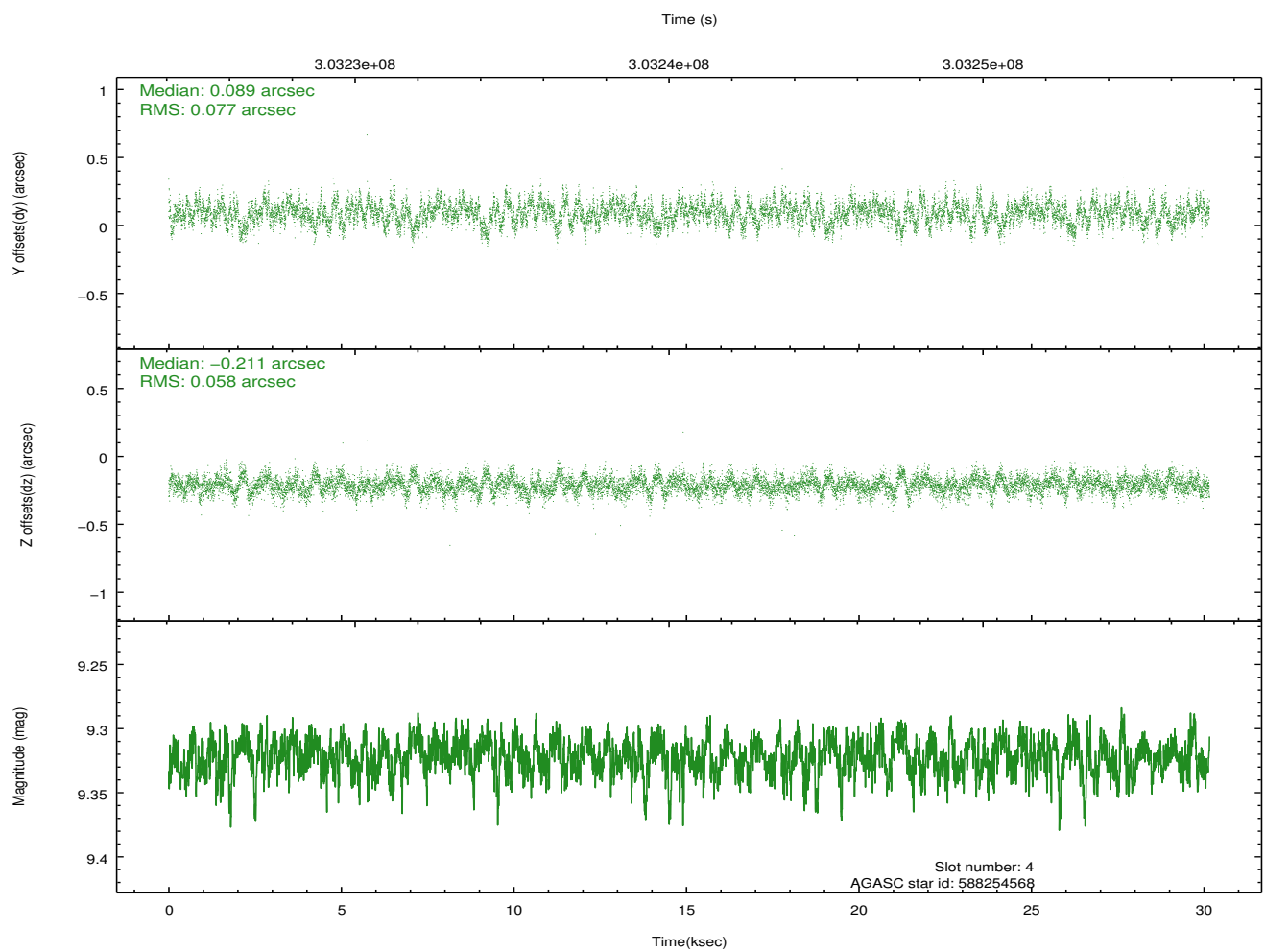
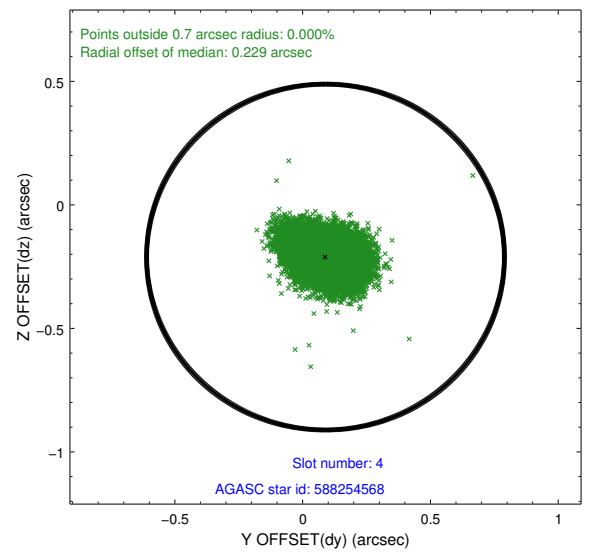
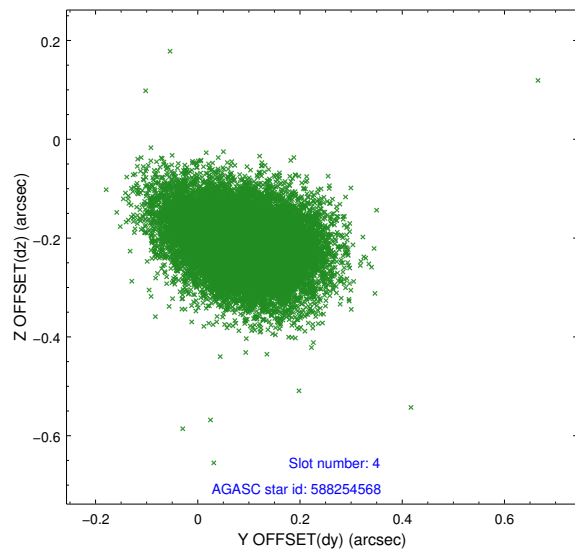
slot	status	id	mag	n_pts	med_dy	med_dz	dr1	dr2	ra	dec	mean_y	mean_z
0	FID	ACIS-I-1	7.23	7358	0.029	-0.009	0.016	0.026	0.000000	0.000000	927.16	-838.11
1	FID	ACIS-I-5	7.22	7358	-0.204	0.035	0.008	0.014	0.000000	0.000000	-1821.16	1059.38
2	FID	ACIS-I-6	7.23	7357	0.084	0.046	0.014	0.023	0.000000	0.000000	392.66	1703.98
3	GUIDE	588252568	9.25	14701	0.010	-0.178	0.099	0.157	339.276658	74.729401	-108.04	1743.01
4	GUIDE	588254568	9.32	14705	0.089	-0.211	0.102	0.168	340.745977	74.459876	-1755.01	2193.93
5	GUIDE	602933784	8.58	14709	-0.103	0.051	0.076	0.121	339.845390	75.657631	478.09	-1587.71
6	GUIDE	602951136	9.45	14701	0.038	0.211	0.121	0.187	339.666455	75.238867	138.80	-109.87
7	GUIDE	603088912	7.77	14712	-0.029	0.123	0.050	0.081	340.542840	75.436402	-378.29	-1046.14

2.4 Star Slots

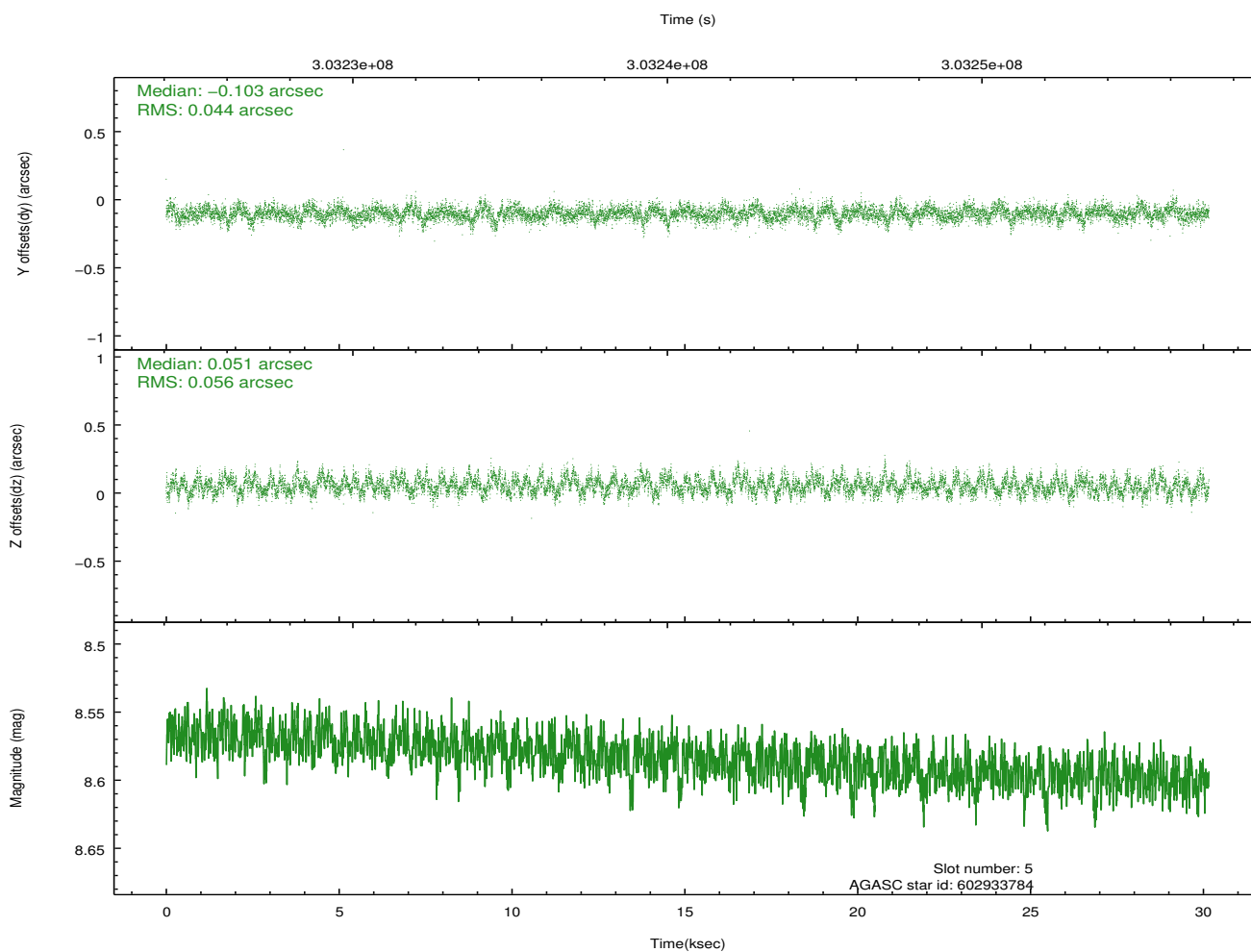
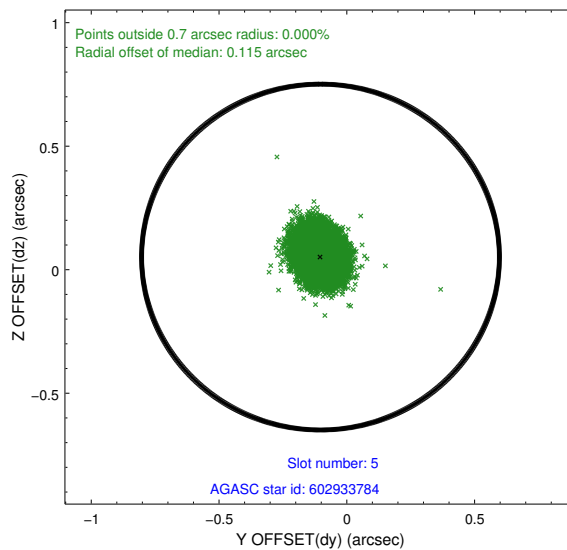
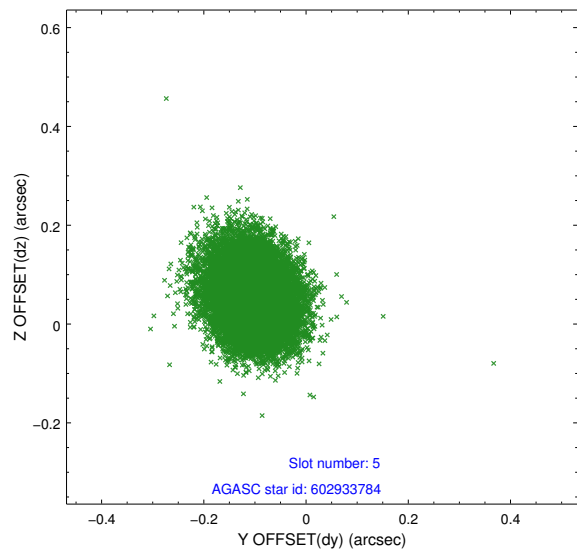
2.4.1 Slot 3



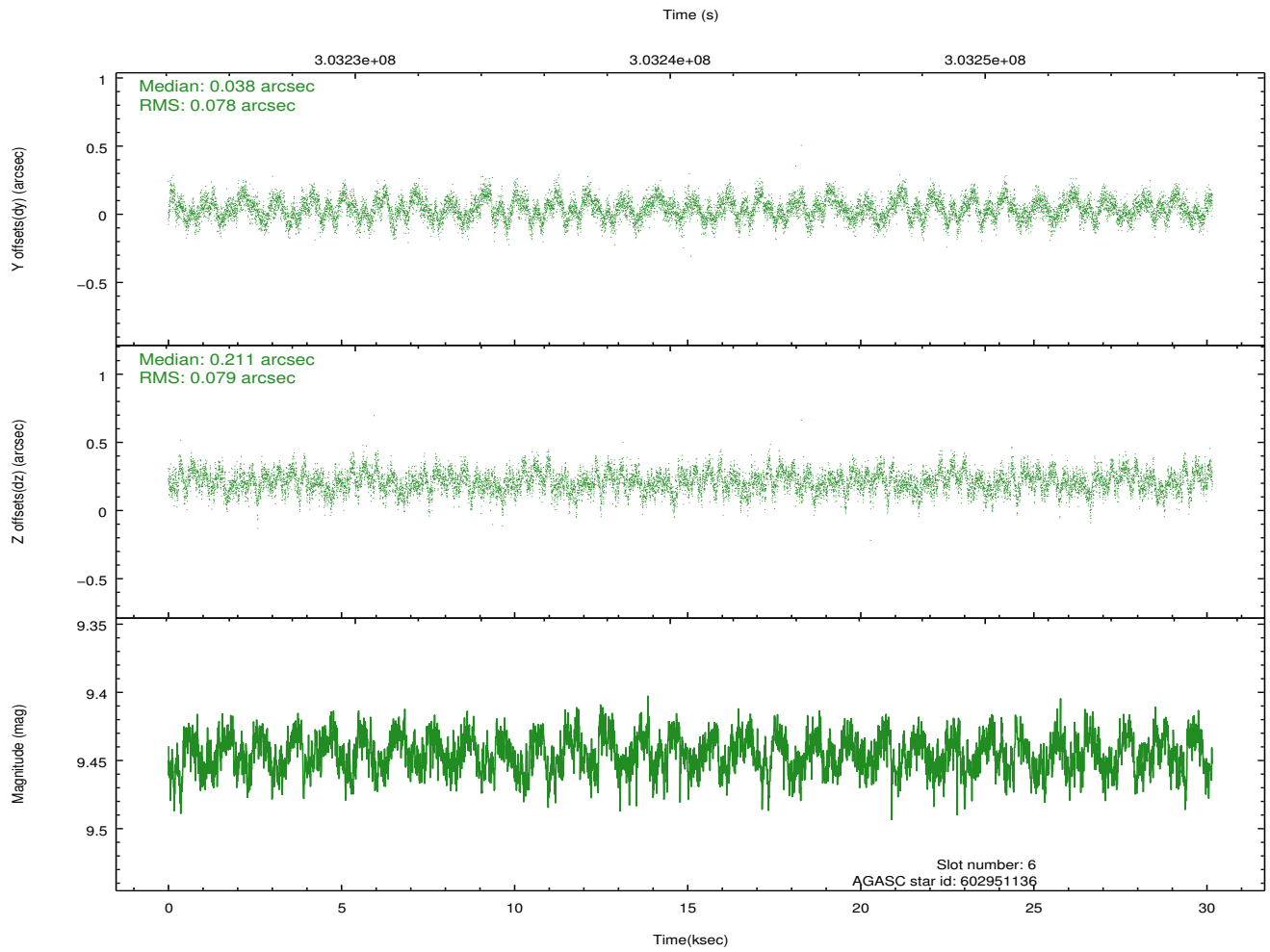
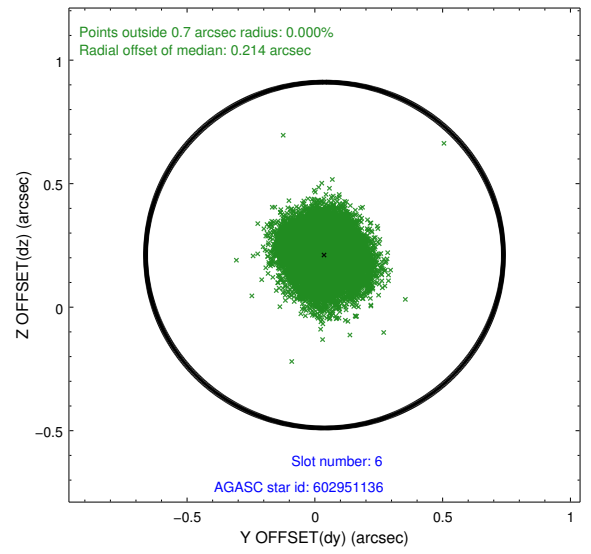
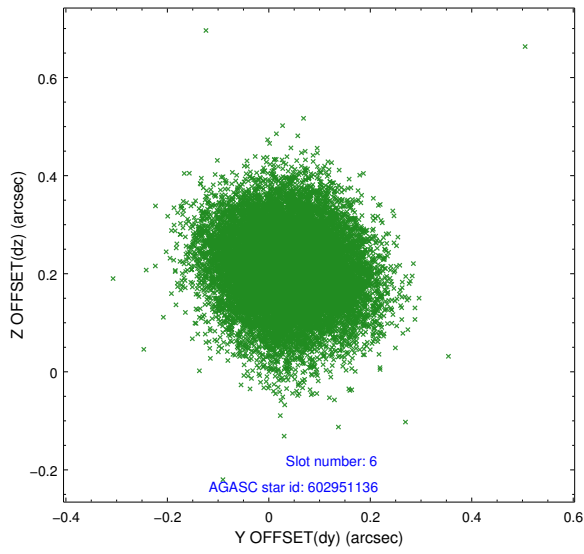
2.4.2 Slot 4



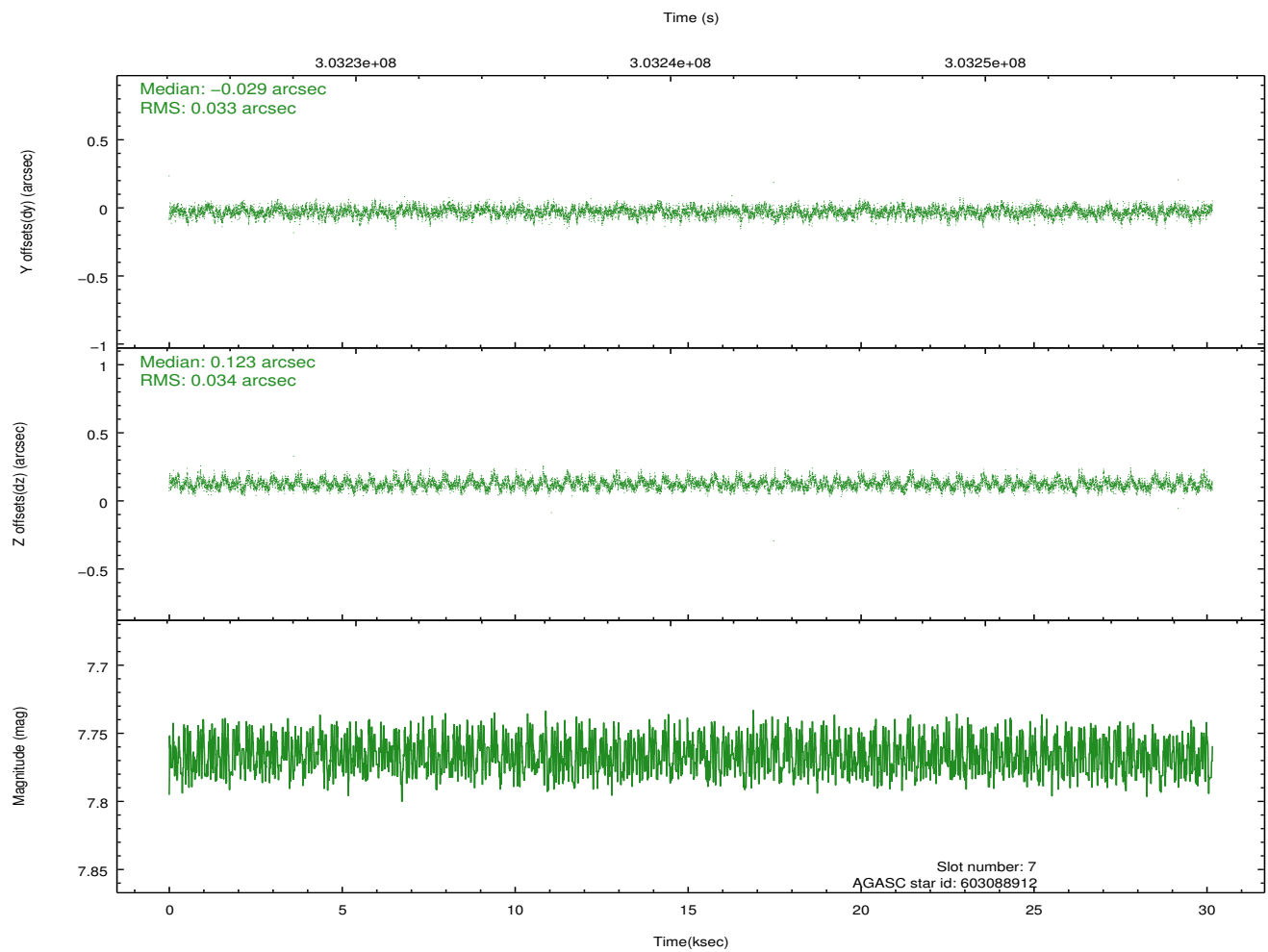
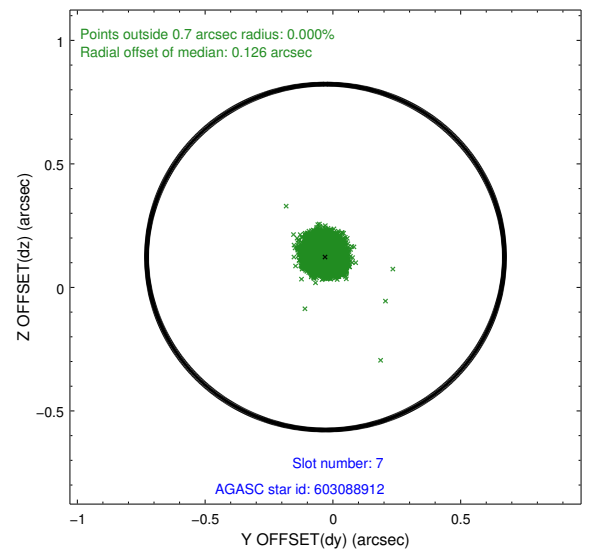
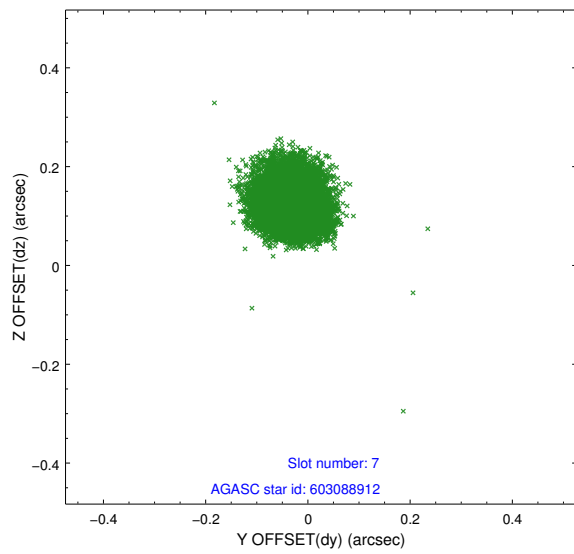
2.4.3 Slot 5



2.4.4 Slot 6

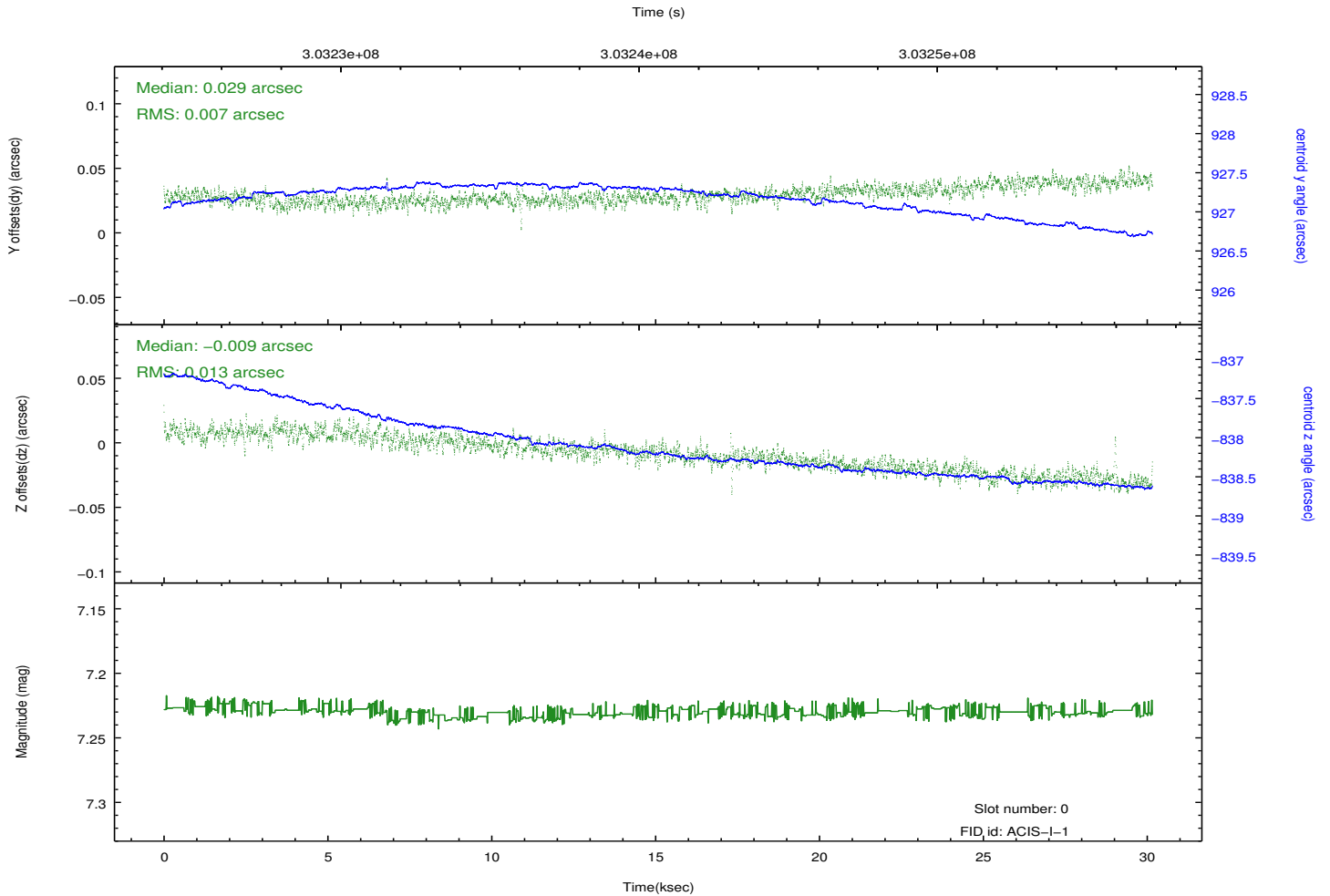
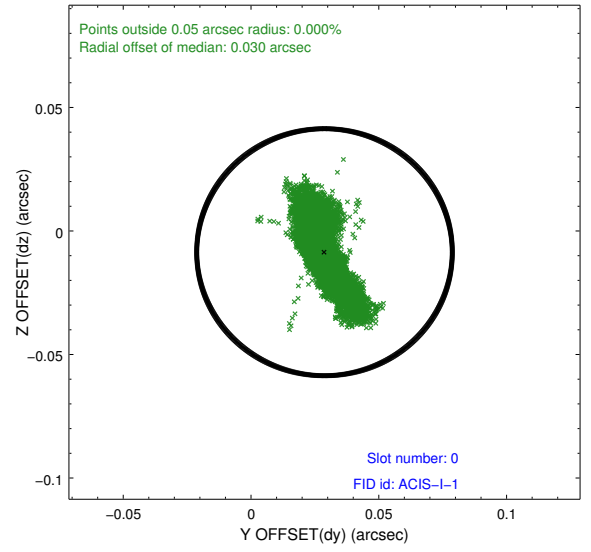
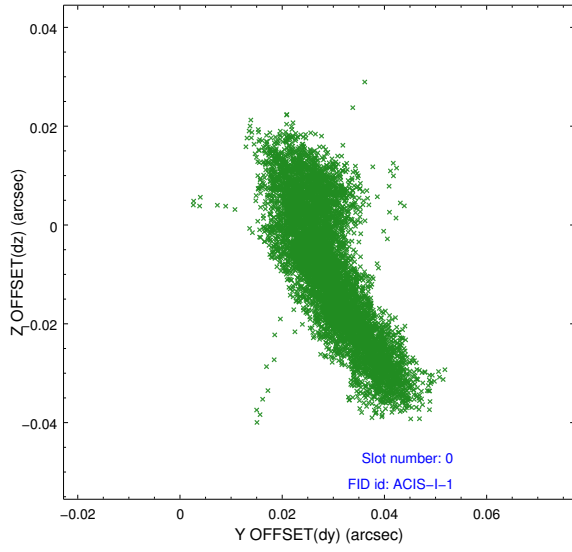


2.4.5 Slot 7

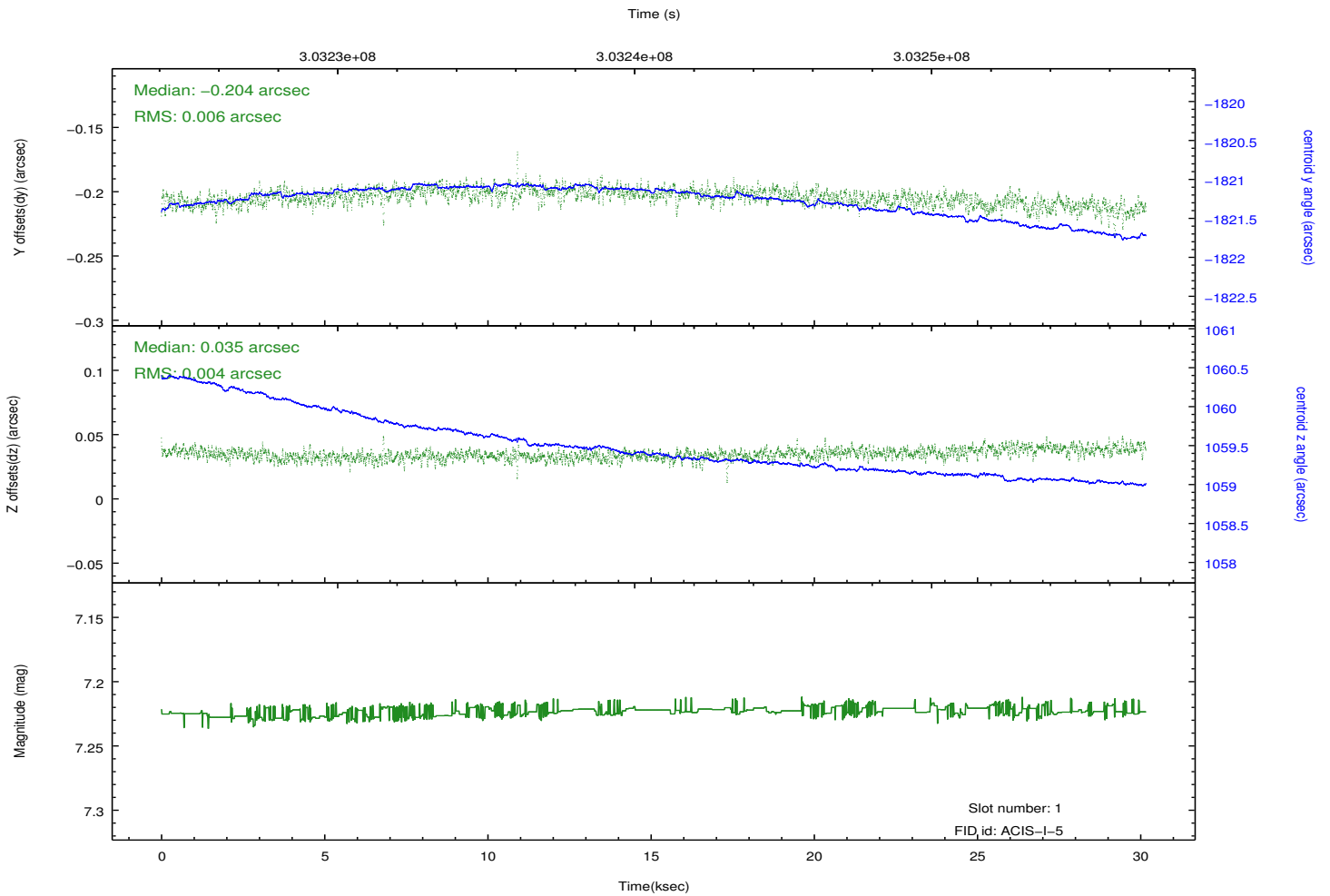
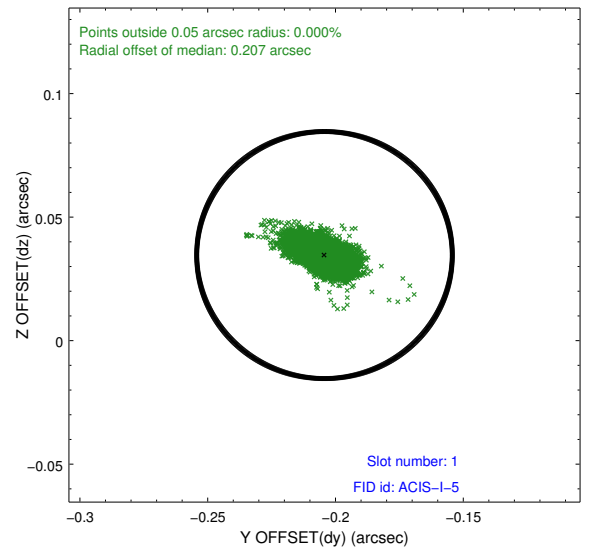
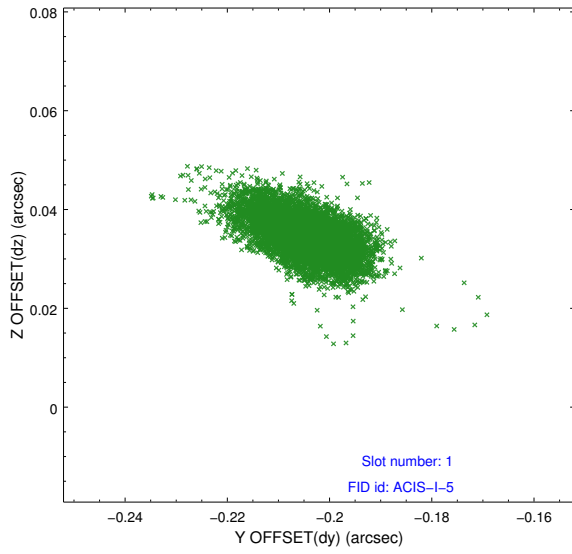


2.5 FID Slots

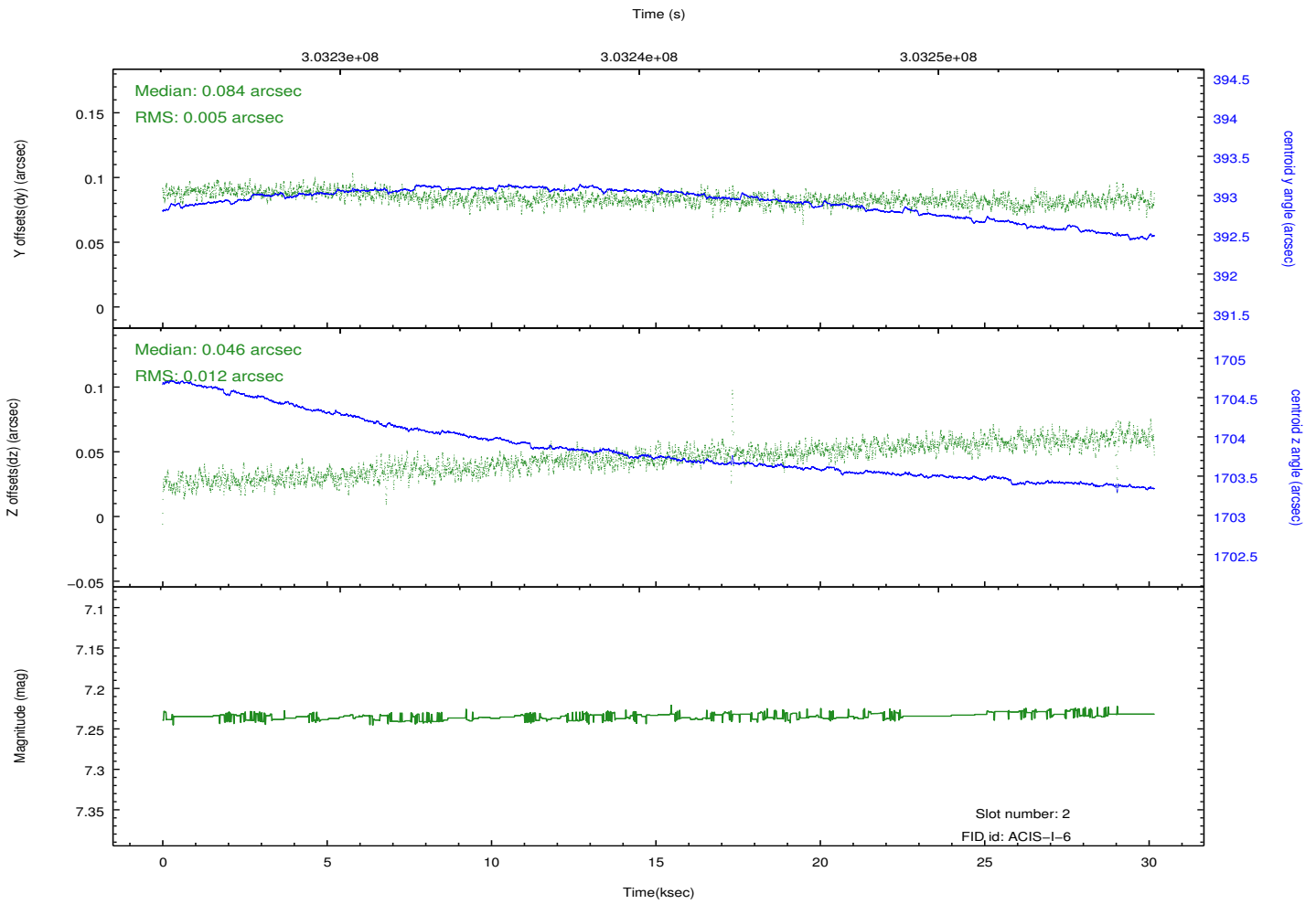
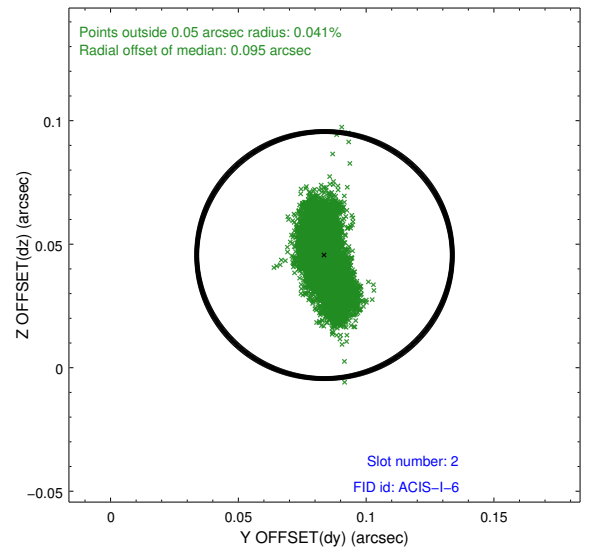
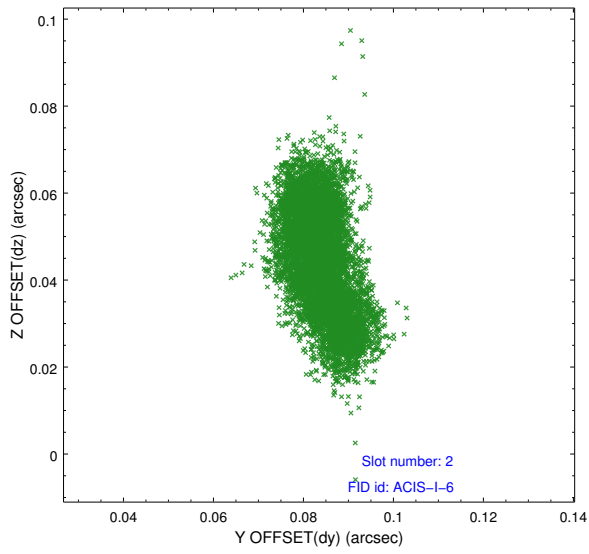
2.5.1 Slot 0



2.5.2 Slot 1



2.5.3 Slot 2



A Summary

A.1 Status

V&V Scientist	Jen Lauer
V&V Date (YYYY-MM-DD)	2012.05.02
V&V Edition	1
V&V Disposition and Status	OK
V&V Charge Time	30.0447998

A.2 Comments