

V&V Reference Report

L2 ASCDS Version : 8.4.4

Observation 7425 - L2 Version 2
Chandra X-Ray Center

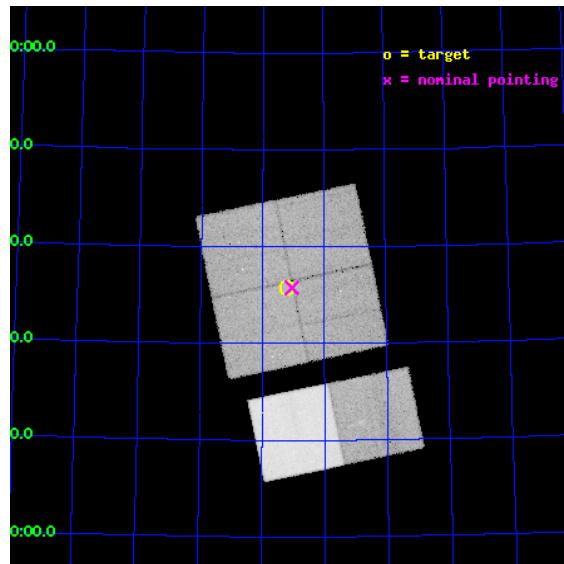
L2 Processing Date : Apr 28 2012

Contents

1	Front	2
2	OBI	3
2.1	OBI	3
2.1.1	Images	3
2.1.2	Bias	3
2.1.3	Parameters	4
2.1.4	Events	4
2.2	Compared Parameters	5
2.3	Aspect	6
2.4	Star Slots	9
2.4.1	Slot 3	9
2.4.2	Slot 4	10
2.4.3	Slot 5	11
2.4.4	Slot 6	12
2.4.5	Slot 7	13
2.5	FID Slots	14
2.5.1	Slot 0	14
2.5.2	Slot 1	15
2.5.3	Slot 2	16
A	Summary	17
A.1	Status	17
A.2	Comments	17

1 Front

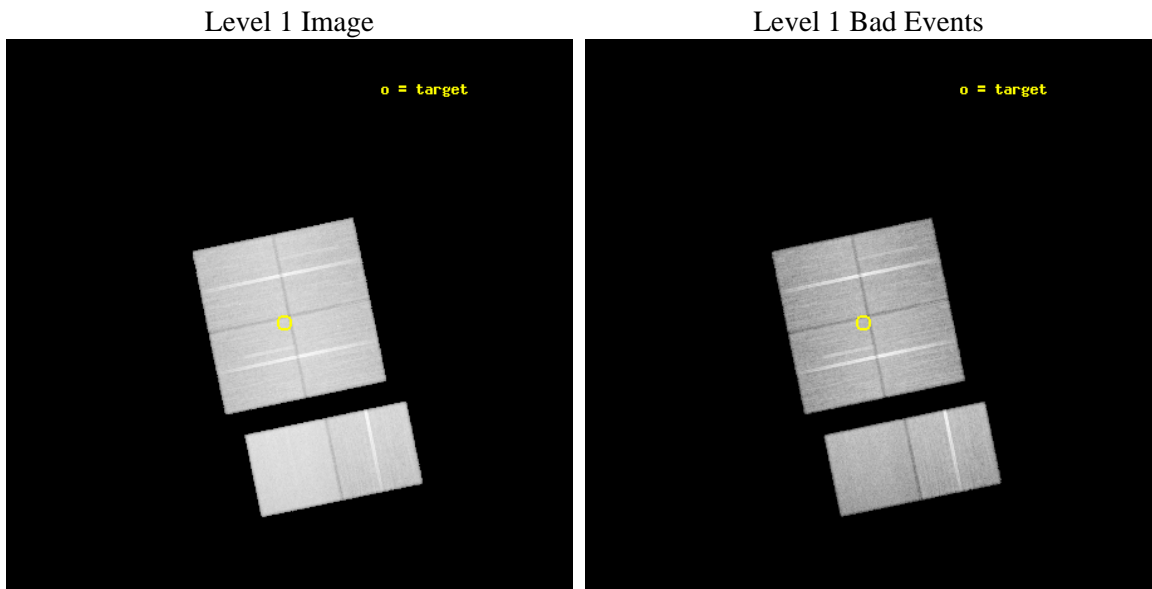
seq_num	200438	Sequence number
obs_id	7425	Observation id
title	Evolution of Accretion and X-Rays in Lynds 1228	Proposal title
observer	Prof. Manuel Guedel	Principal investigator
object	L1228 core	Source name
dtycycle	0	
cycle	P	events from which exps? Prim/Second/Both
ra_targ	314.29875	Observer's specified target RA [deg]
dec_targ	77.596639	Observer's specified target Dec [deg]
ra_nom	314.26129275188	Nominal RA [deg]
dec_nom	77.595867658812	Nominal Dec [deg]
roll_nom	168.30120368352	Nominal Roll [deg]
revision	2	Processing version of data
ontime	37251.158920825	Sum of GTIs [s]
livetime	36779.462316614	Livetime [s]
ontime0	37254.399861276	Sum of GTIs [s]
ontime1	37244.676930487	Sum of GTIs [s]
ontime2	37247.917870879	Sum of GTIs [s]
ontime3	37251.158920825	Sum of GTIs [s]
ontime6	37251.158891022	Sum of GTIs [s]
ontime7	37254.399861276	Sum of GTIs [s]
l2events	383802	Number of level 2 events



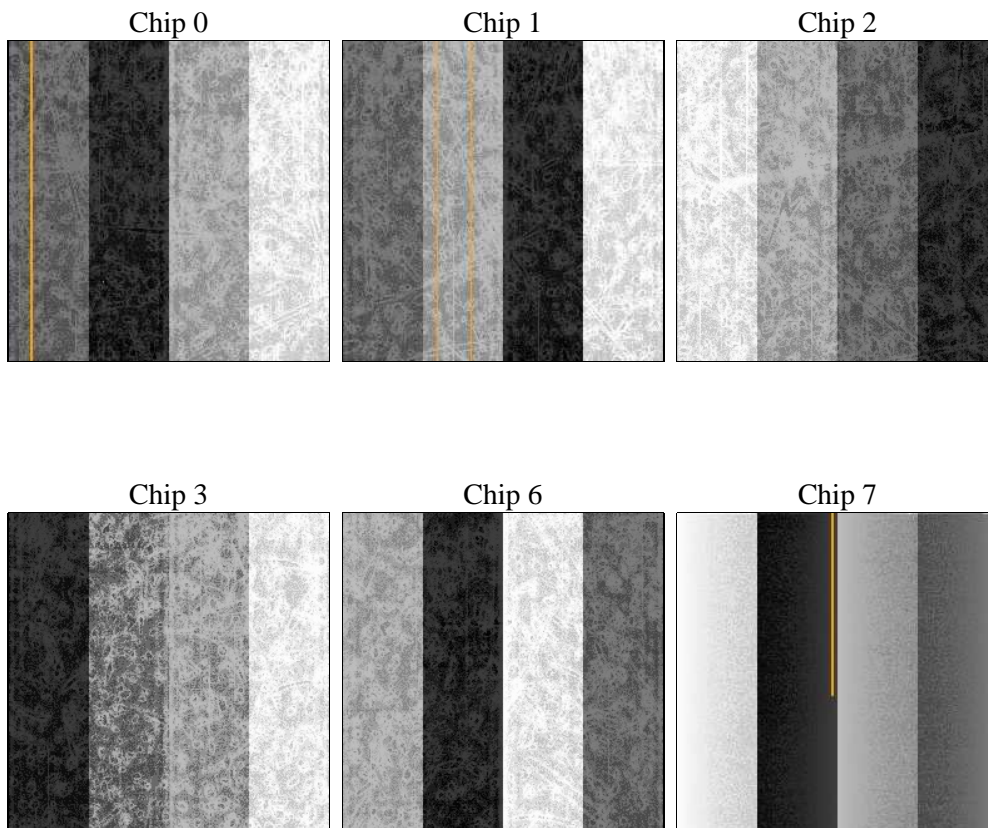
2 OBI

2.1 OBI

2.1.1 Images



2.1.2 Bias



2.1.3 Parameters

obi_num	0	Obi number	sched_exp_time	37092.210000	[s] Scheduled observation exposure time
ascdsver	8.4.4	Processing system revision	ontime	37251.158920825	Sum of GTIs [s]
caldbver	4.4.9	 	ontime0	37254.399861276	Sum of GTIs [s]
date	2012-04-28T15:43:10	Date and time of file creation	ontime1	37244.676930487	Sum of GTIs [s]
revision	2	Processing version of data	ontime2	37247.917870879	Sum of GTIs [s]
			ontime3	37251.158920825	Sum of GTIs [s]
			ontime6	37251.158891022	Sum of GTIs [s]
			ontime7	37254.399861276	Sum of GTIs [s]
			l1events	2236947	Number of level 1 events

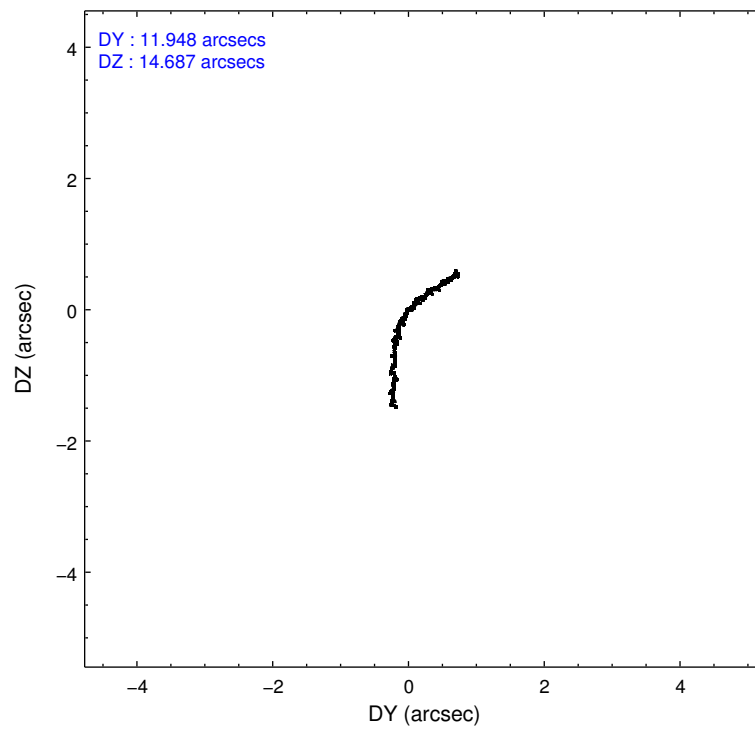
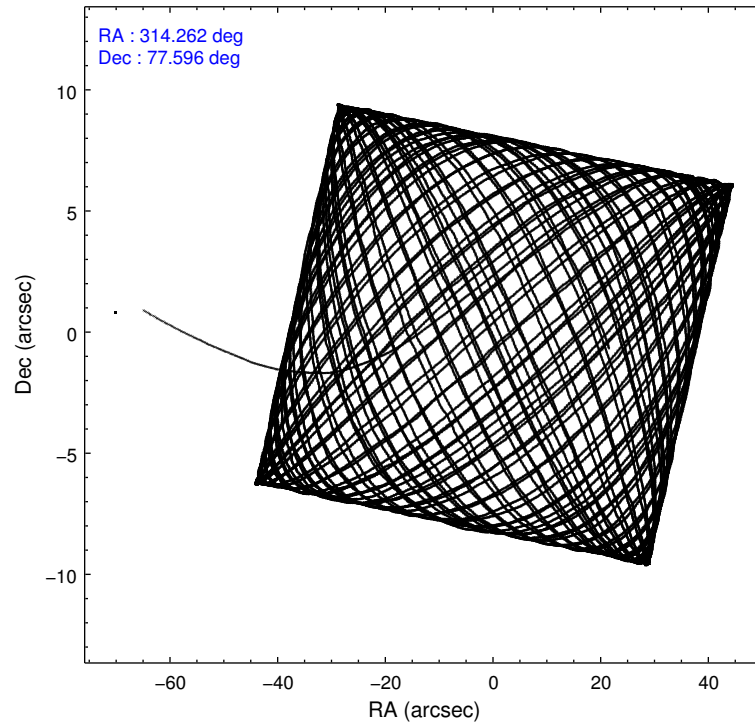
2.1.4 Events

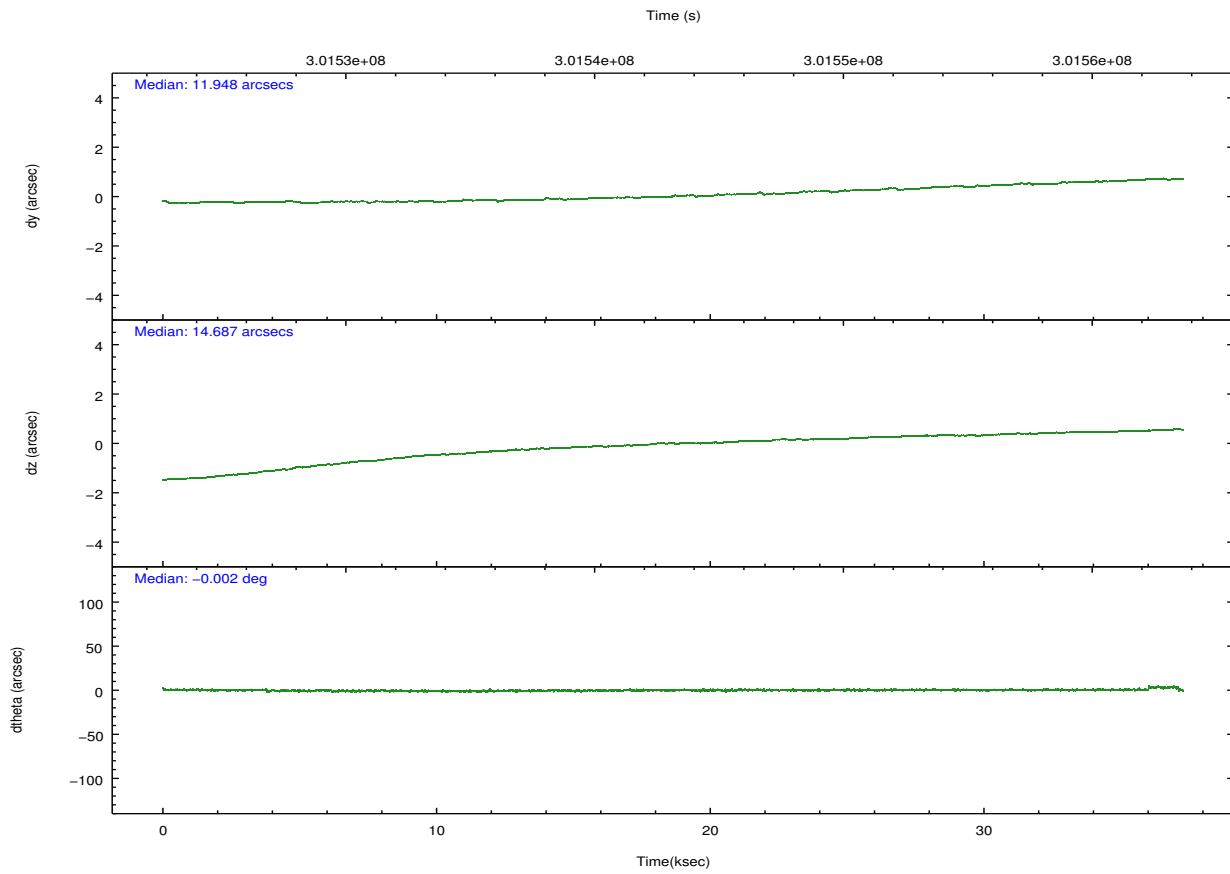
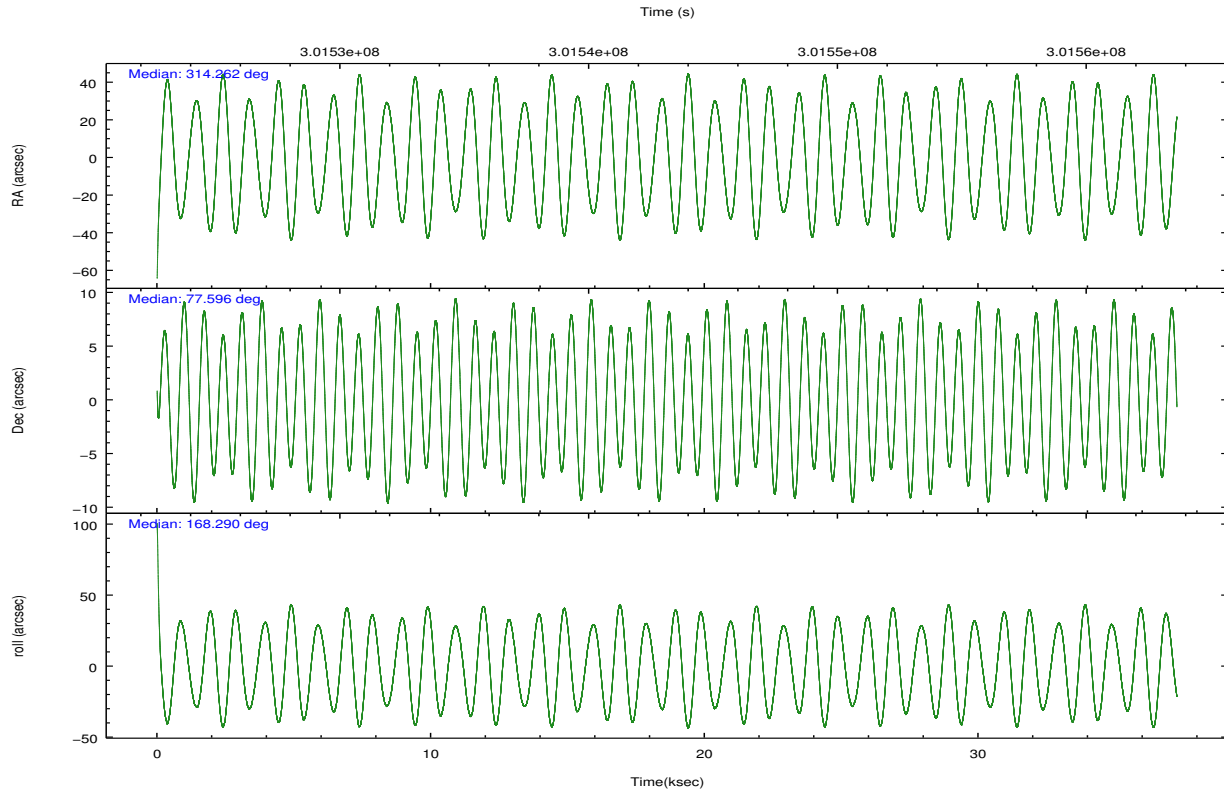
	ccd 0	ccd 1	ccd 2	ccd 3	ccd 6	ccd 7		ccd 0	ccd 1	ccd 2	ccd 3	ccd 6	ccd 7
level 1 events	326010	330328	366572	349809	374757	489471	grade 0 events	17655	17141	18415	18300	16600	17136
rejected events	283442	285344	324796	307508	331594	286054		5%	5%	5%	5%	4%	3%
rejected %	86%	86%	88%	87%	88%	58%	grade 1 events	207	187	254	245	179	514
								0%	0%	0%	0%	0%	0%
							grade 2 events	9572	10540	8889	8391	9557	41399
								2%	3%	2%	2%	2%	8%
							grade 3 events	4070	4383	3718	4066	4156	17320
								1%	1%	1%	1%	1%	3%
							grade 4 events	3795	4142	3902	3944	3992	17187
								1%	1%	1%	1%	1%	3%
							grade 5 events	14436	15360	13717	16562	17301	46418
								4%	4%	3%	4%	4%	9%
							grade 6 events	7484	8806	6862	7609	8881	110433
								2%	2%	1%	2%	2%	22%
							grade 7 events	268791	269769	310815	290692	314091	239064
								82%	81%	84%	83%	83%	48%

2.2 Compared Parameters

Parameter	Planned	Actual	Parameter	Planned	Actual
Instrument	ACIS	ACIS	Obspar format version number	7	7
Detector	ACIS-012367	ACIS-012367	Obspar file type	PREDICTED	ACTUAL
Grating	NONE	NONE	Obspar update status	NONE	UPDATED
Data mode	FAINT	FAINT	Number of optional ACIS chips dropped	0	0
Observation mode	POINTING	POINTING	On-chip summing requested	N	N
[deg] Pointing RA	314.382763	314.2612927518825	Subarray requested	NONE	NONE
[deg] Pointing Dec	77.604526	77.5958676588118	Alternating exposures requested	N	N
[deg] Pointing Roll	167.973871	168.3012036835204	[s] Primary exposure time	0.000000	3.2
[mm] SIM focus pos	-0.782348	-0.7809083437167272			
[mm] SIM defocus	0	0.001439871863259334			
[mm] SIM translation stage pos	-233.592463	-233.5874344608287			
[mm] SIM translation stage offset	0	-0.005018542100998502			
[s] Observation start time (MET)	301524689.184000	301523619.62777			
Observation start date	2007-07-22T20:50:24	2007-07-22T20:33:39			
[s] Observation end time (MET)	301561781.184000	301562020.22961			
Observation end date	2007-07-23T07:08:36	2007-07-23T07:13:40			
Read mode	TIMED	TIMED			

2.3 Aspect



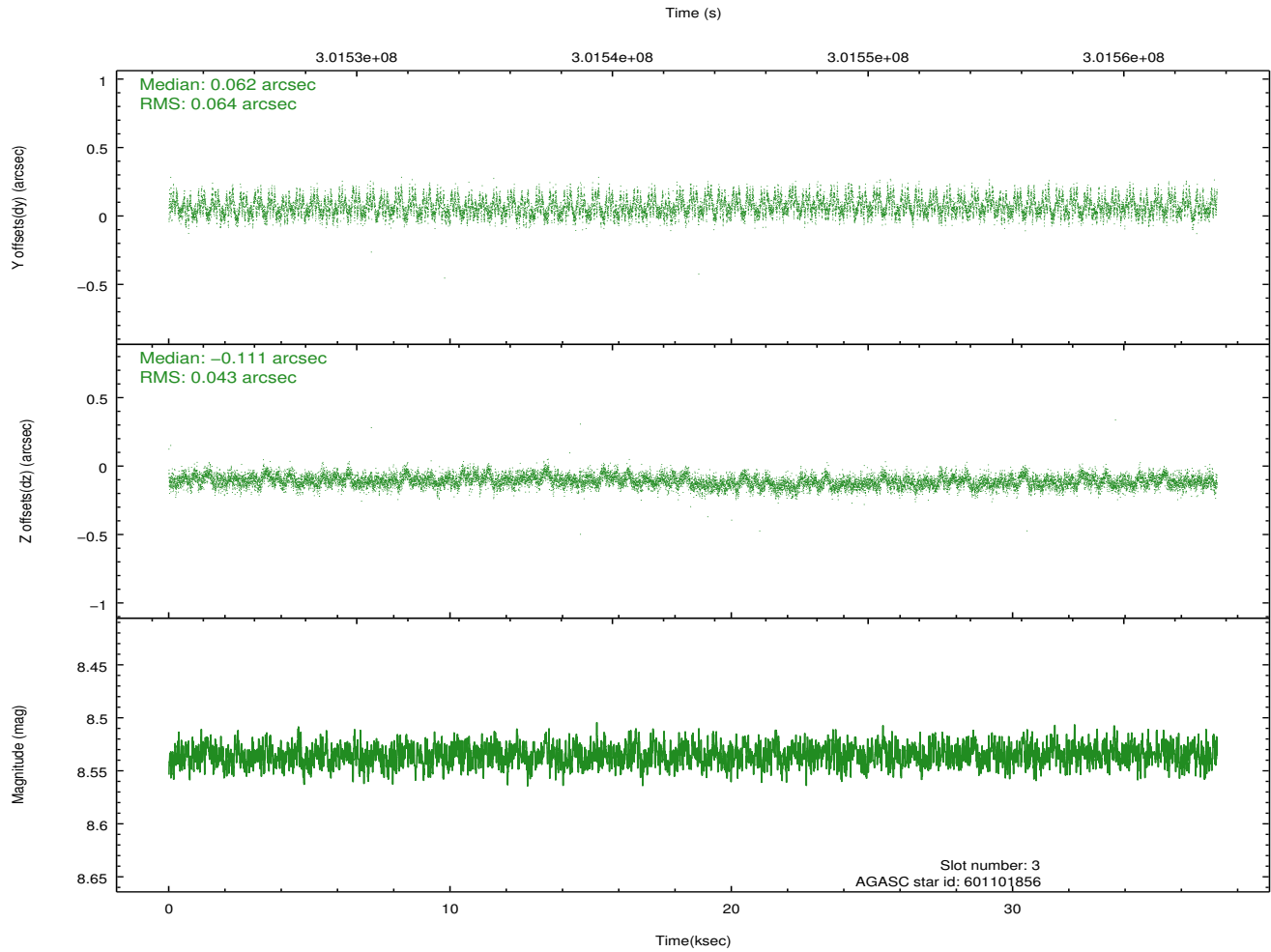
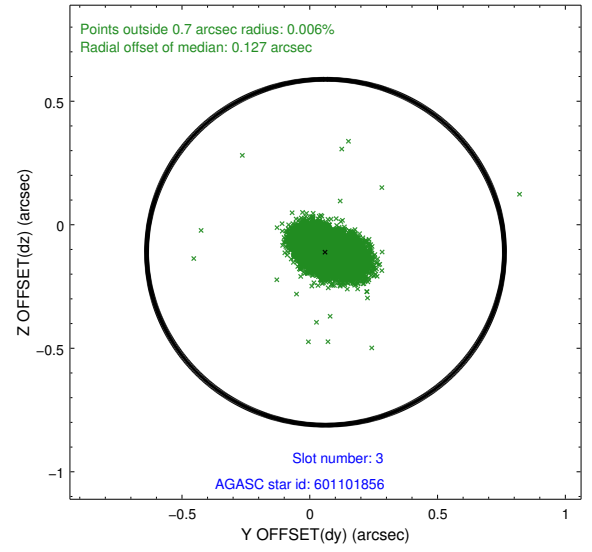
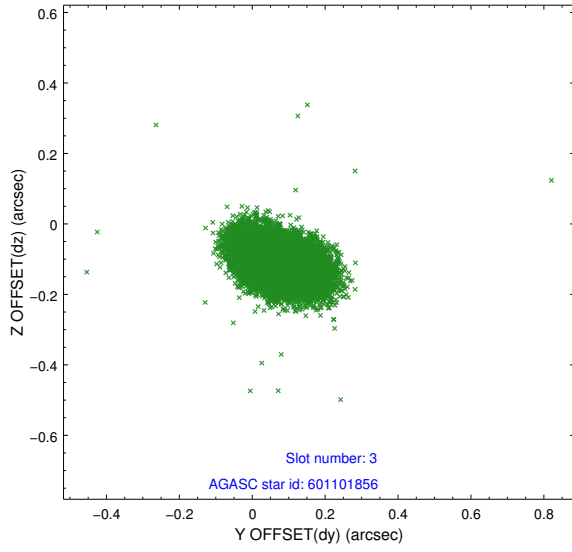


Slot Statistics

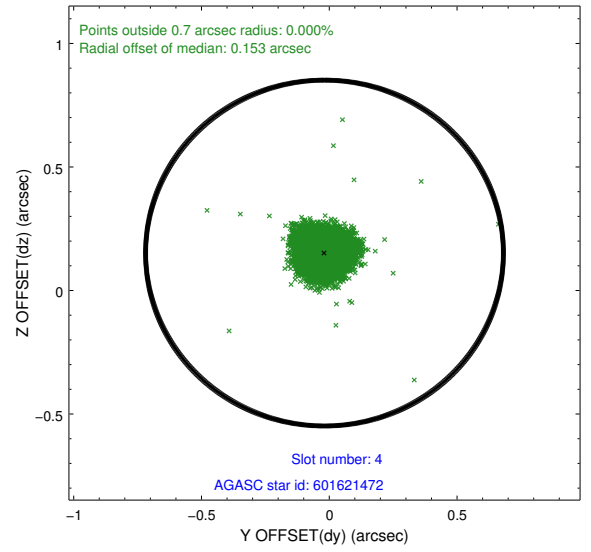
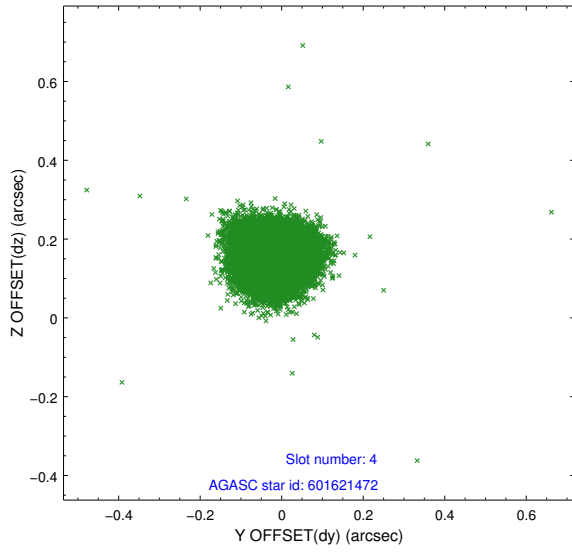
slot	status	id	mag	n_pts	med_dy	med_dz	dr1	dr2	ra	dec	mean_y	mean_z
0	FID	ACIS-I-1	7.23	9086	-0.012	0.024	0.014	0.028	0.000000	0.000000	927.48	-838.09
1	FID	ACIS-I-4	7.16	9085	0.172	0.013	0.014	0.024	0.000000	0.000000	2147.74	1061.68
2	FID	ACIS-I-5	7.23	9086	-0.259	0.034	0.011	0.024	0.000000	0.000000	-1820.72	1059.62
3	GUIDE	601101856	8.54	18170	0.062	-0.111	0.081	0.135	316.502521	76.872868	-2237.17	2184.91
4	GUIDE	601621472	8.45	18163	-0.019	0.152	0.067	0.107	313.000274	78.205993	1448.97	-1916.49
5	GUIDE	601630192	8.12	18159	-0.106	0.043	0.063	0.103	313.530666	78.250787	1097.19	-2149.27
6	GUIDE	601633632	8.34	18173	0.103	-0.078	0.074	0.119	314.946658	77.455941	-542.01	429.38
7	GUIDE	601635288	6.42	18173	-0.044	-0.004	0.066	0.105	316.371935	78.126393	-1043.75	-2168.77

2.4 Star Slots

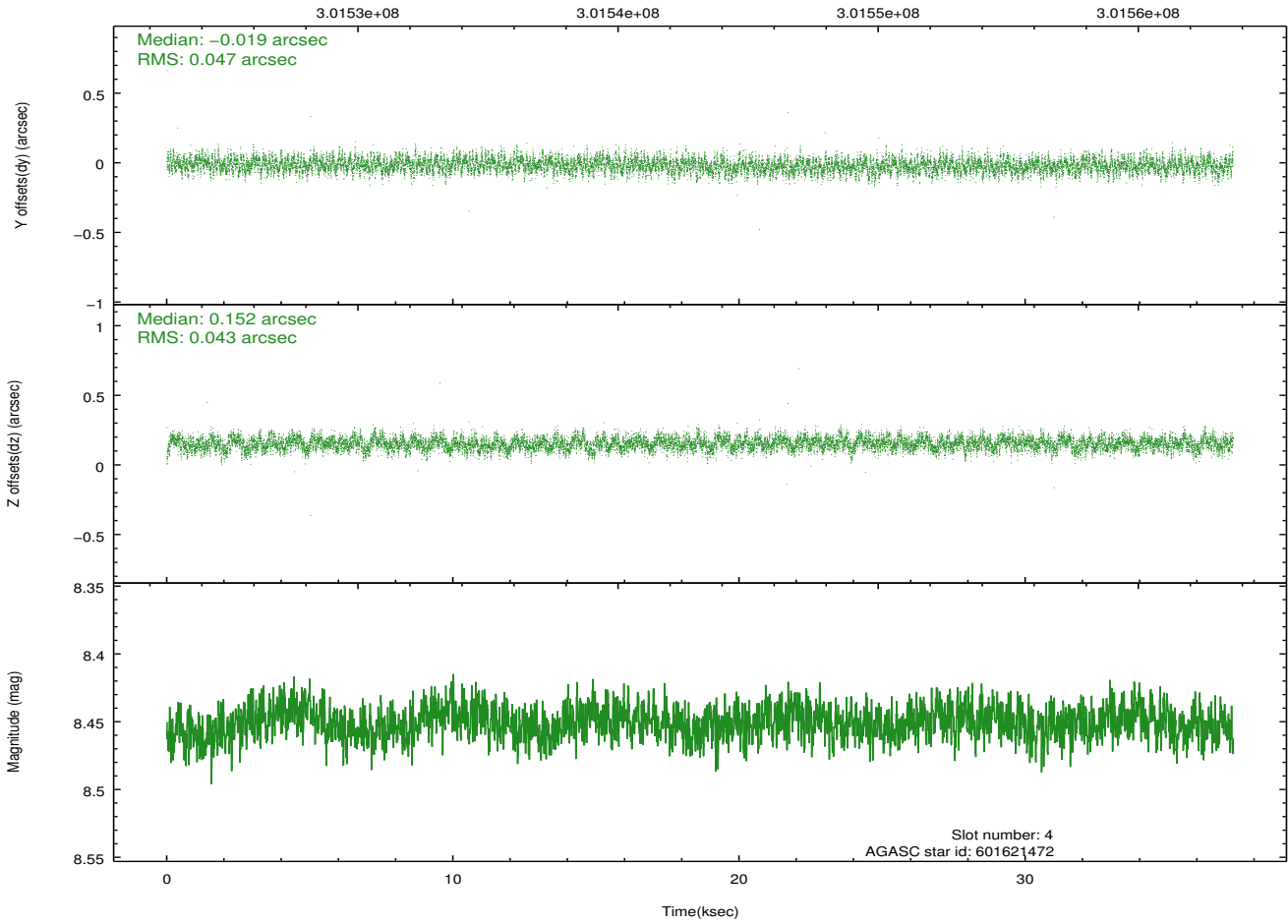
2.4.1 Slot 3



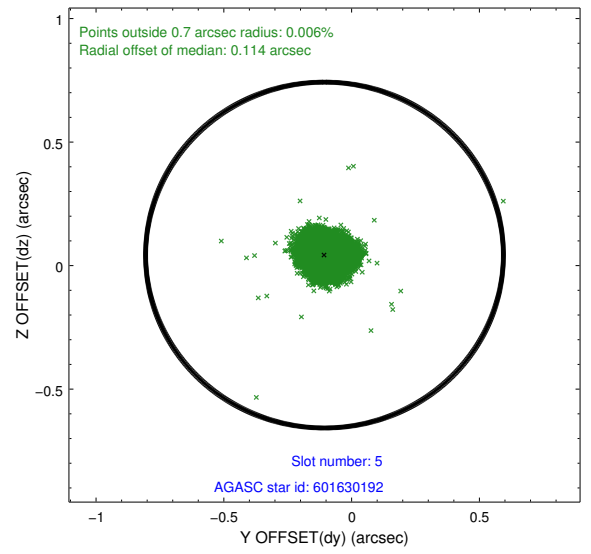
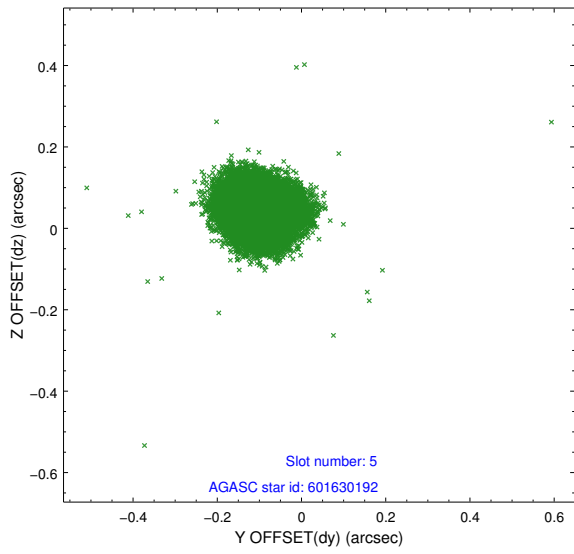
2.4.2 Slot 4



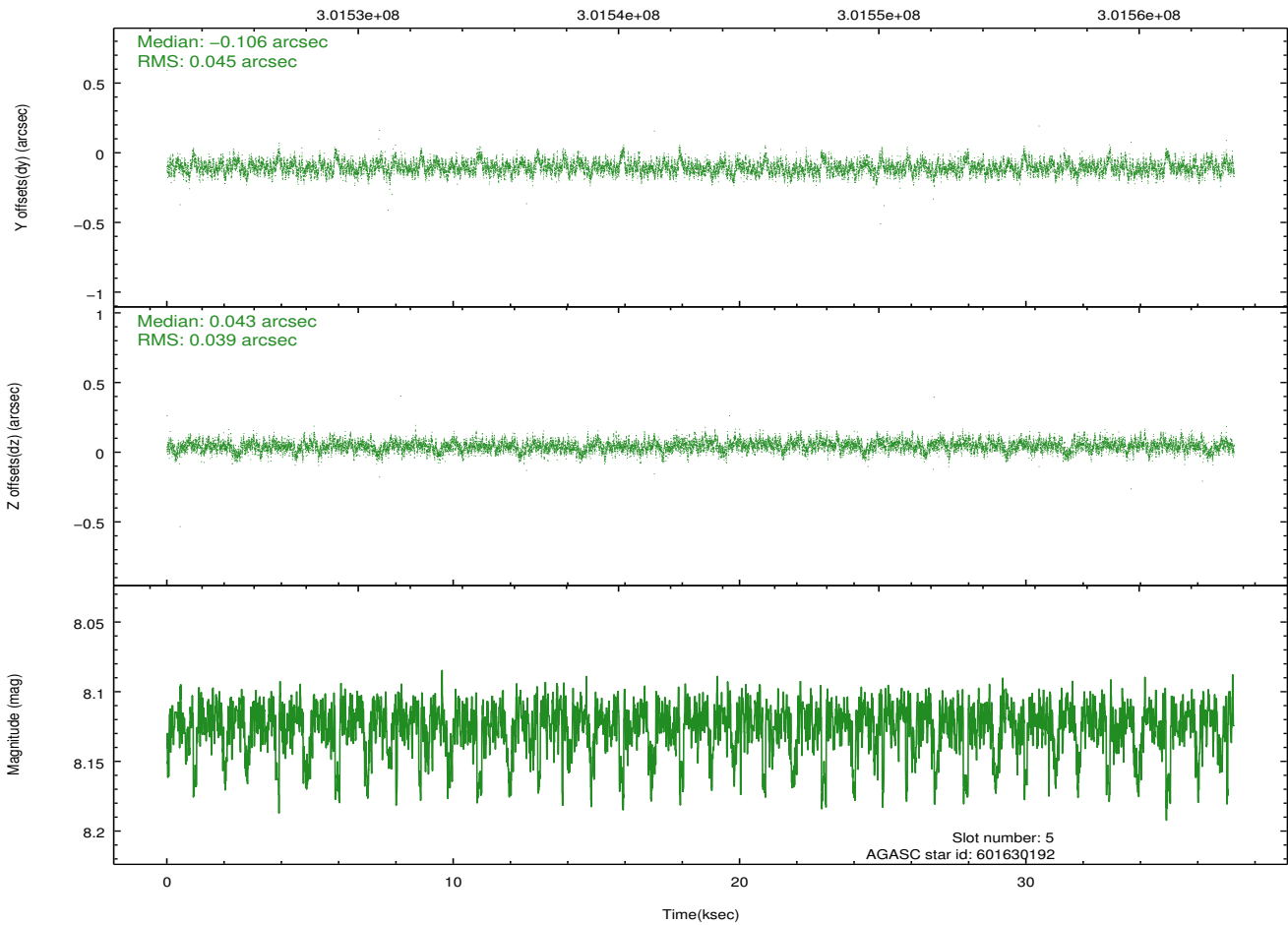
Time (s)



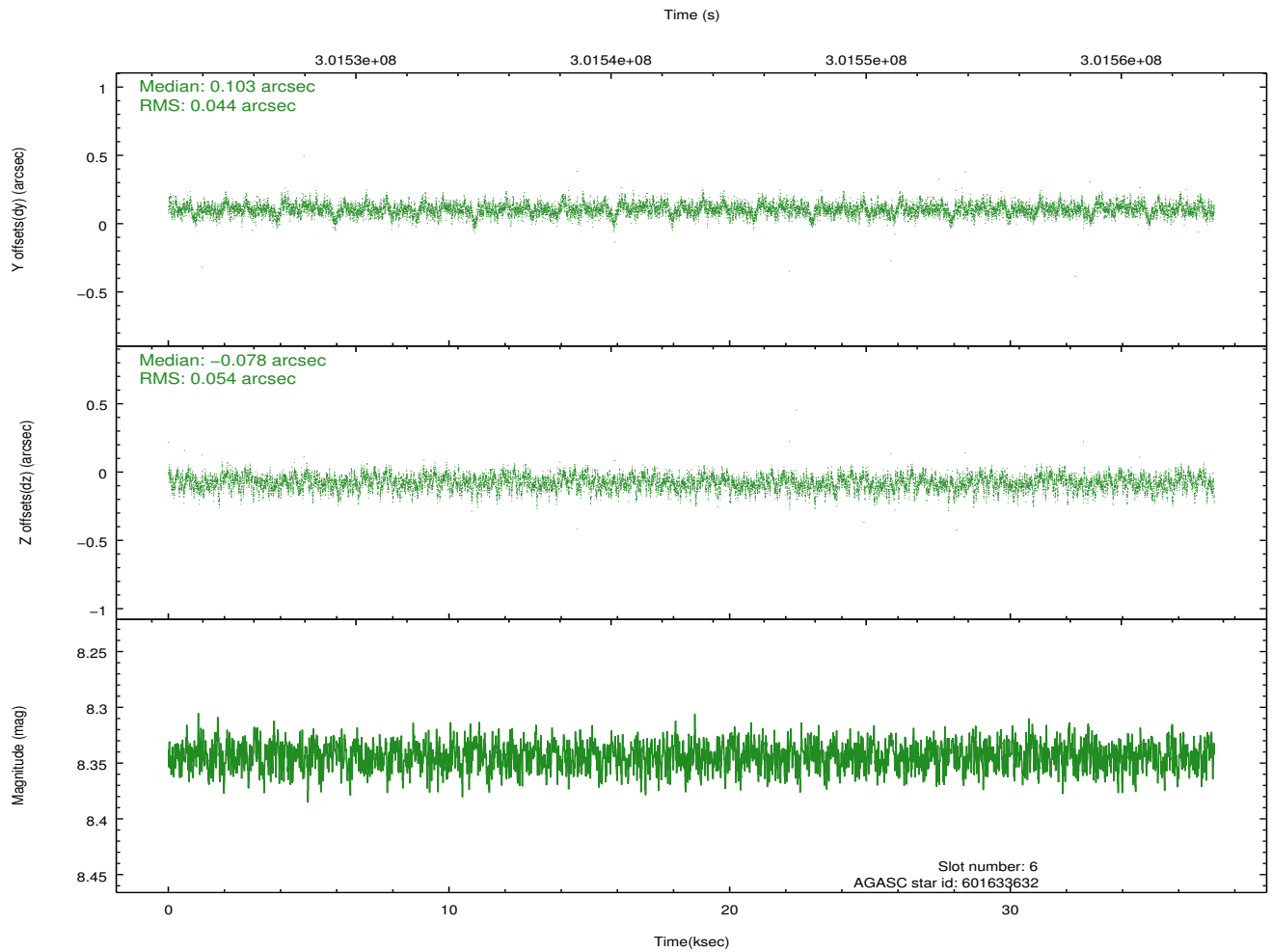
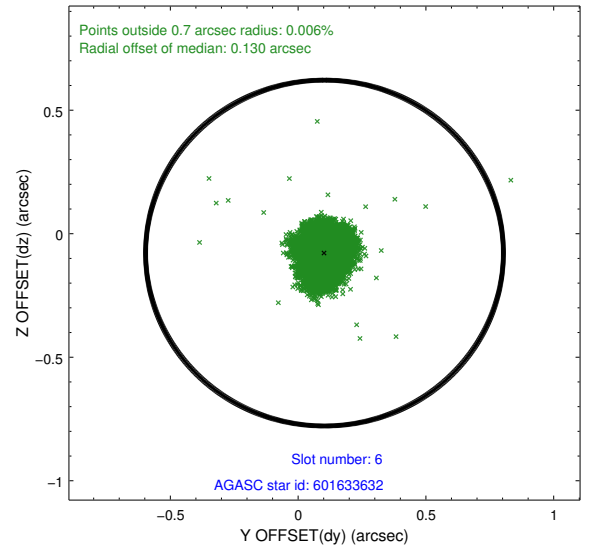
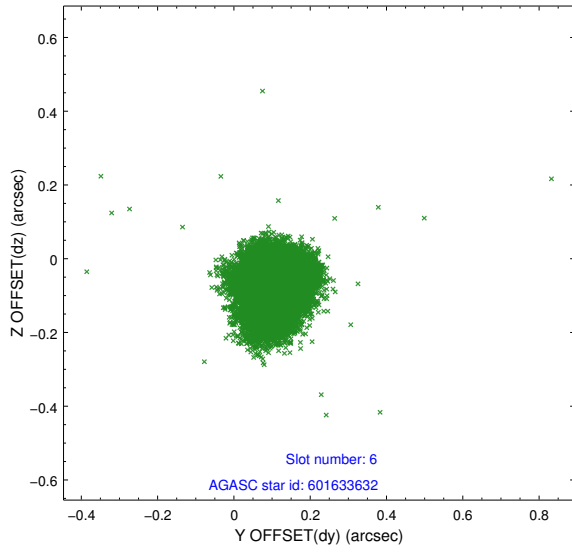
2.4.3 Slot 5



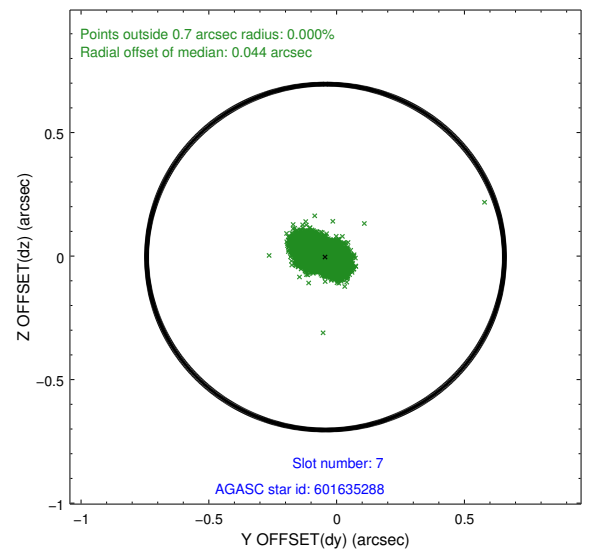
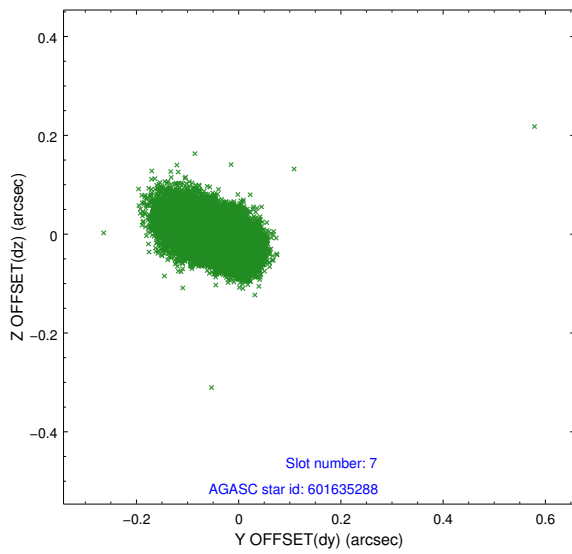
Time (s)



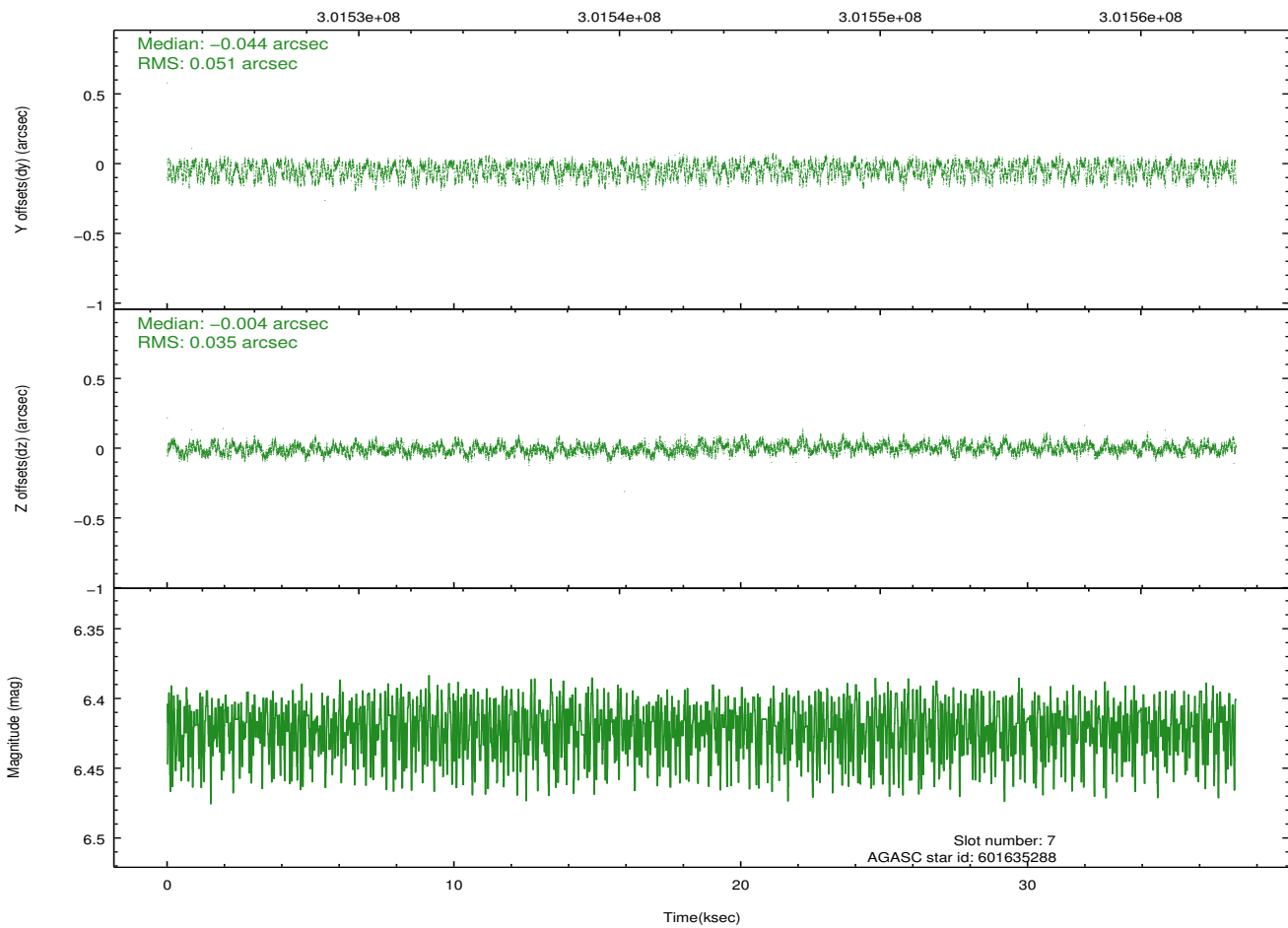
2.4.4 Slot 6



2.4.5 Slot 7

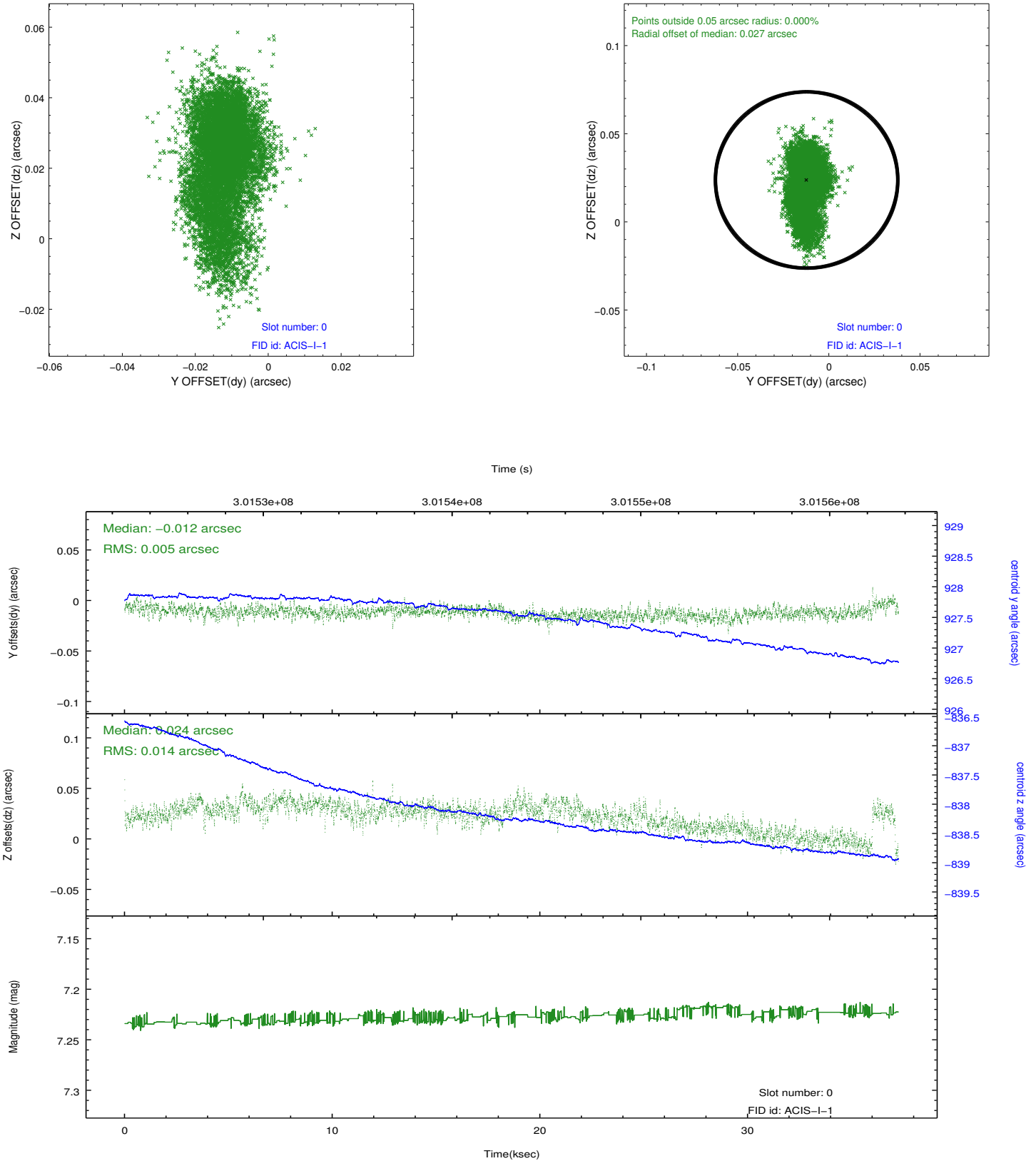


Time (s)

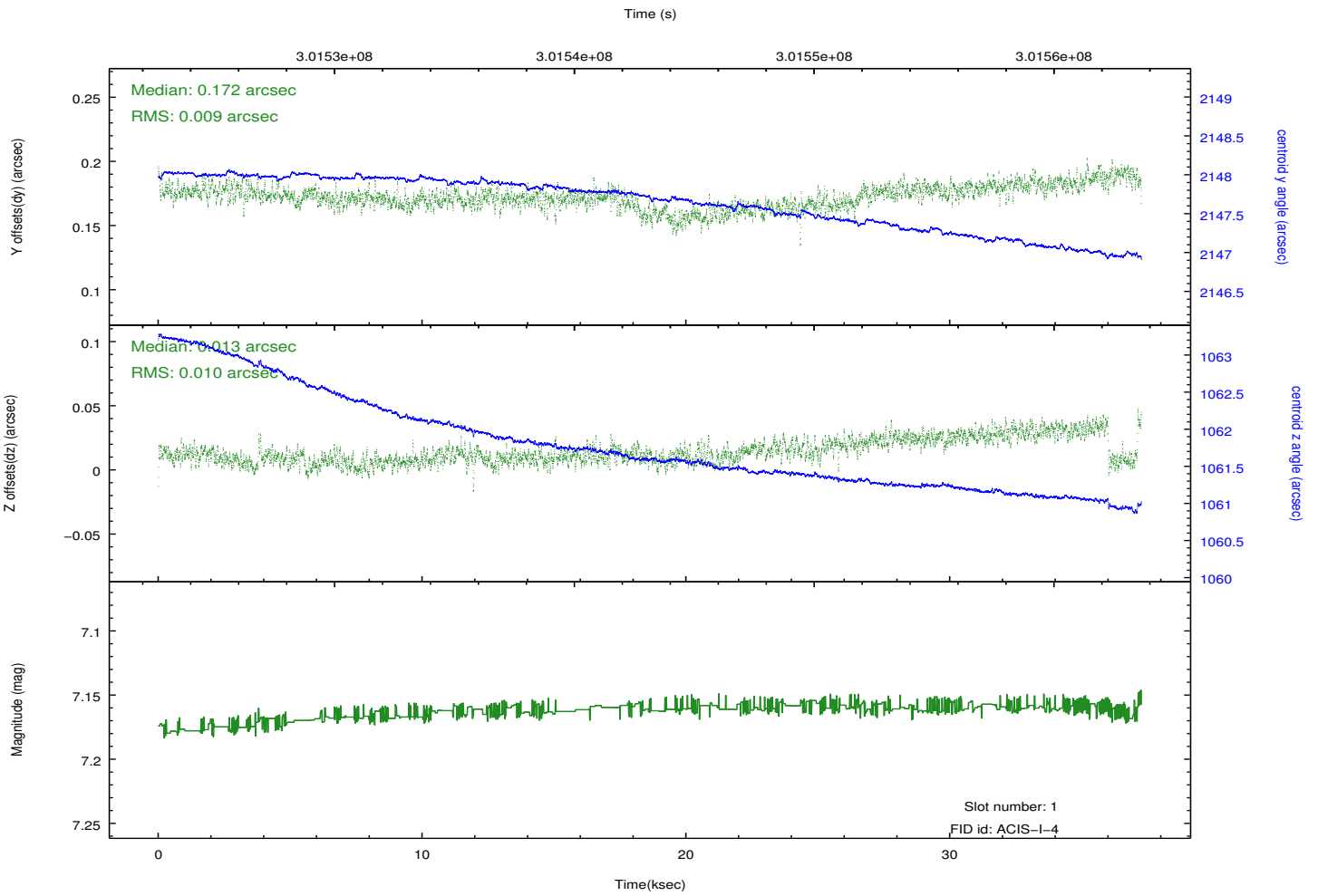
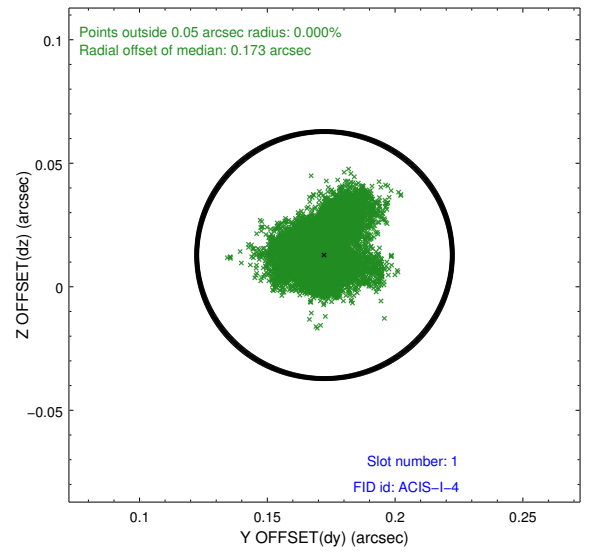
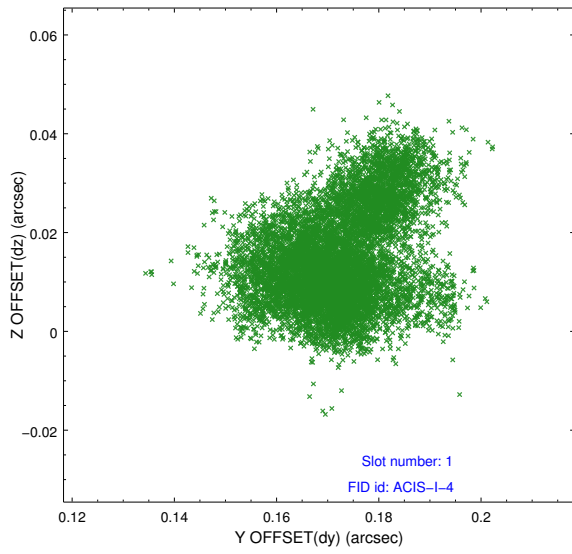


2.5 FID Slots

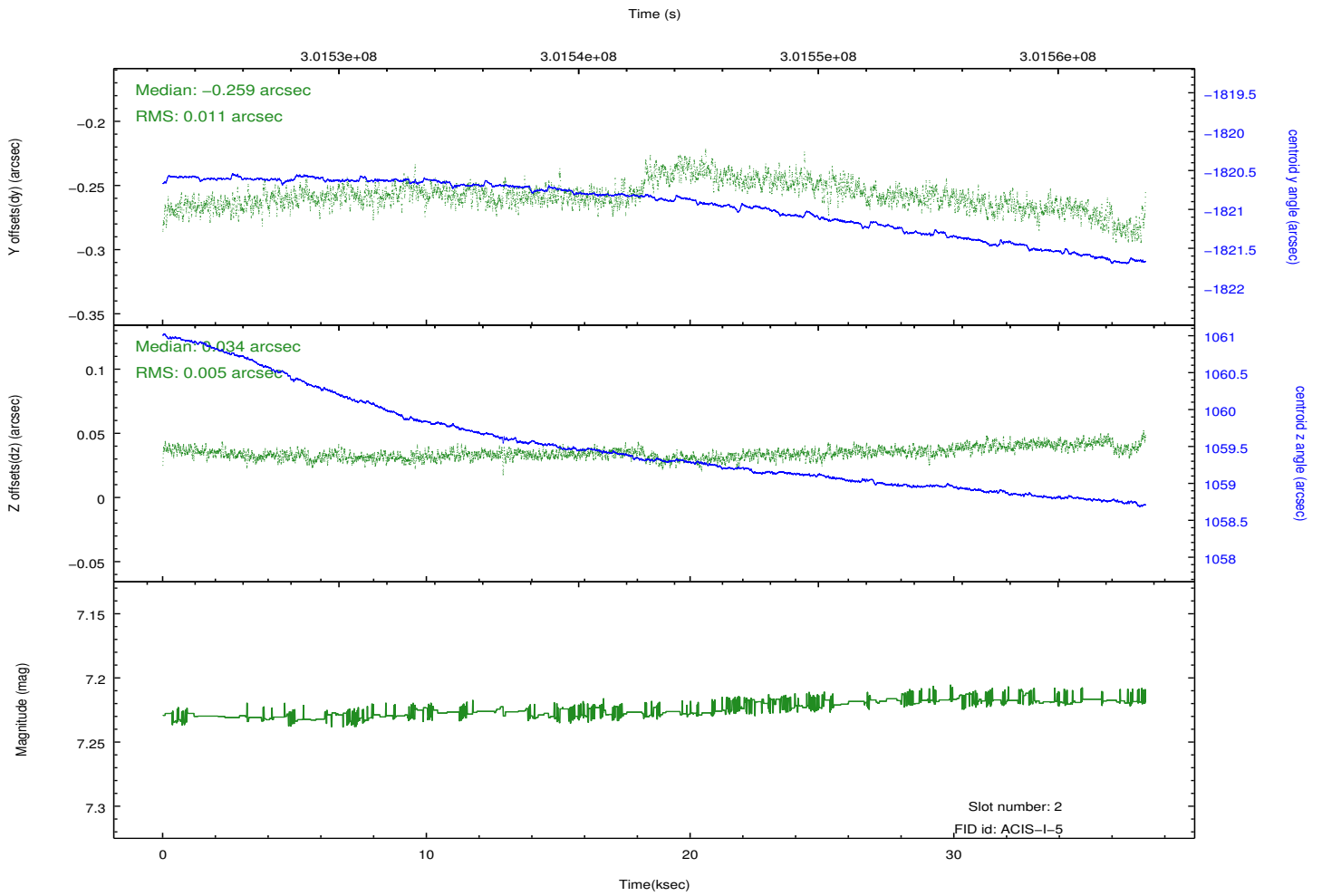
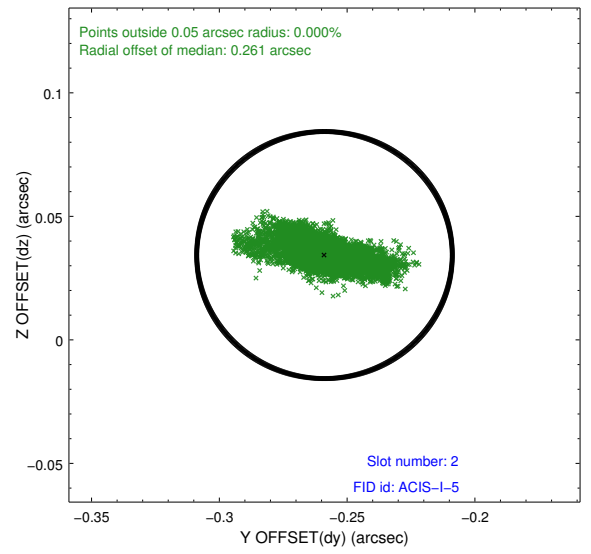
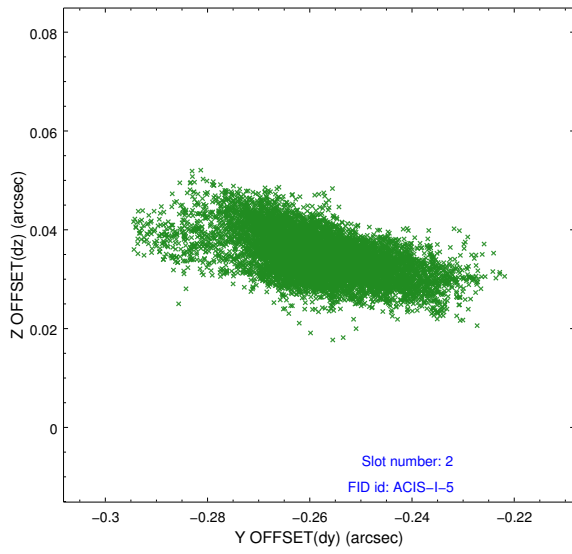
2.5.1 Slot 0



2.5.2 Slot 1



2.5.3 Slot 2



A Summary

A.1 Status

V&V Scientist	Jen Lauer
V&V Date (YYYY-MM-DD)	2012.05.01
V&V Edition	1
V&V Disposition and Status	OK
V&V Charge Time	37.2511589

A.2 Comments