

V&V Reference Report

L2 ASCDS Version : 8.4.5

Observation 745 - L2 Version 5
Chandra X-Ray Center

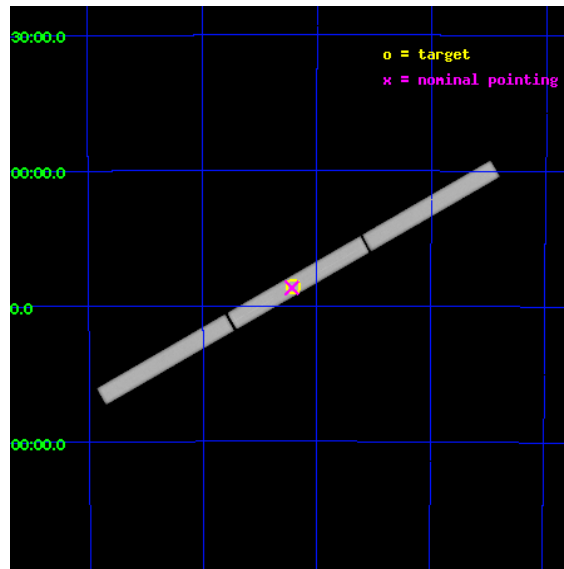
L2 Processing Date : Aug 22 2012

Contents

1	Front	2
2	OBI	3
2.1	OBI	3
2.1.1	Images	3
2.1.2	Parameters	4
2.1.3	Events	4
2.2	Compared Parameters	5
2.3	Aspect	6
2.4	Star Slots	9
2.4.1	Slot 3	9
2.4.2	Slot 4	10
2.4.3	Slot 5	11
2.4.4	Slot 6	12
2.4.5	Slot 7	13
2.5	FID Slots	14
2.5.1	Slot 0	14
2.5.2	Slot 1	15
2.5.3	Slot 2	16
3	Gratings	17
3.1	LETG Arm	17
A	Summary	19
A.1	Status	19
A.2	Comments	19

1 Front

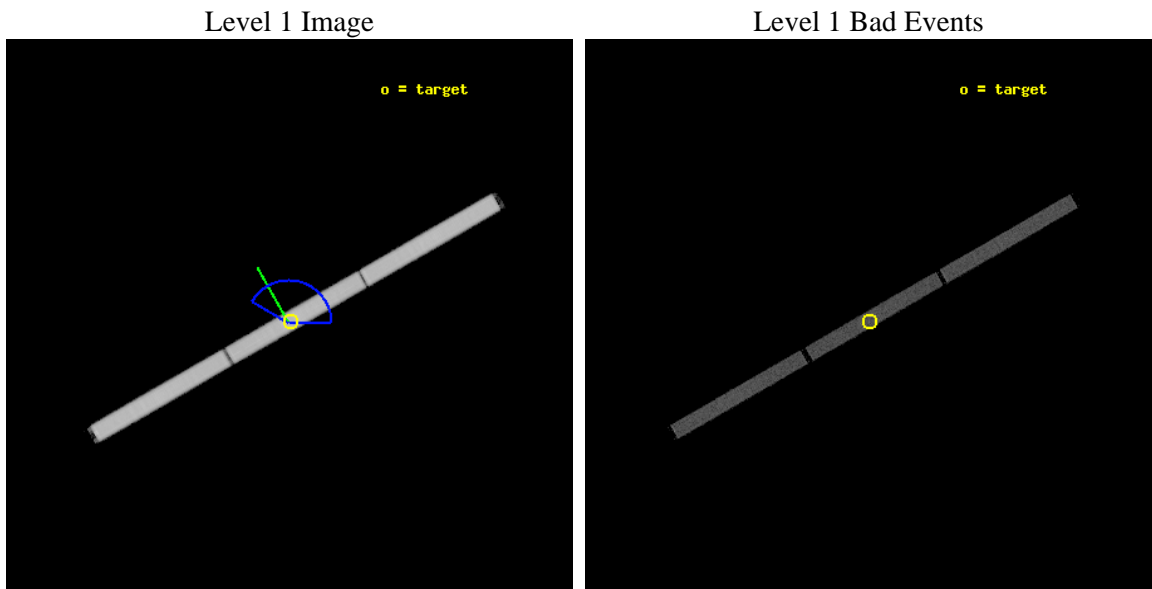
seq_num	500041	Sequence number
obs_id	745	Observation id
title	IS THE NEARBY ISOLATED NEUTRON STAR RXJ 0720.4-3125 A MAGNETAR?	Pr
observer	Prof. Shrinivas Kulkarni	Principal investigator
object	RX J0720.4-3125	Source name
ra_targ	110.10375	Observer's specified target RA [deg]
dec_targ	-31.430806	Observer's specified target Dec [deg]
ra_nom	110.1087957564	Nominal RA [deg]
dec_nom	-31.433629637292	Nominal Dec [deg]
roll_nom	330.17206712618	Nominal Roll [deg]
revision	5	Processing version of data
ontime	26274.082205325	[s]
liveltime	26094.484529689	Overtime multiplied by DTCOR
l2events	1366959	Number of level 2 events



2 OBI

2.1 OBI

2.1.1 Images



2.1.2 Parameters

obi_num	0	Obi number	sched_exp_time	26000.000000	[s] Scheduled observation exposure time
ascdsver	8.4.5	Processing system revision	ontime	26274.082206331	[s]
caldsver	4.5.1.1	 	l1events	2036121	Number of level 1 events
date	2012-08-22T00:48:39	Date and time of file creation			
revision	5	Processing version of data			

2.1.3 Events

Level 1 Events

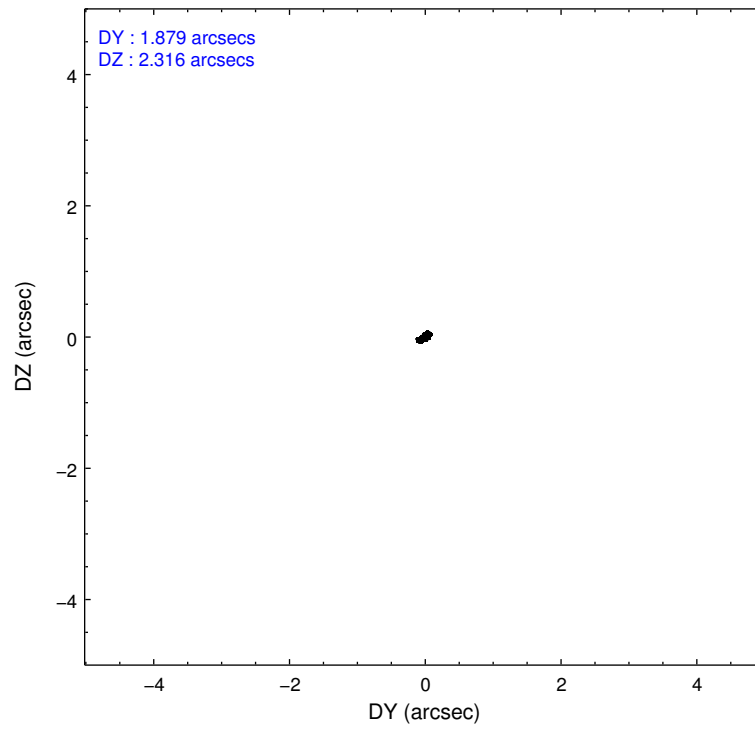
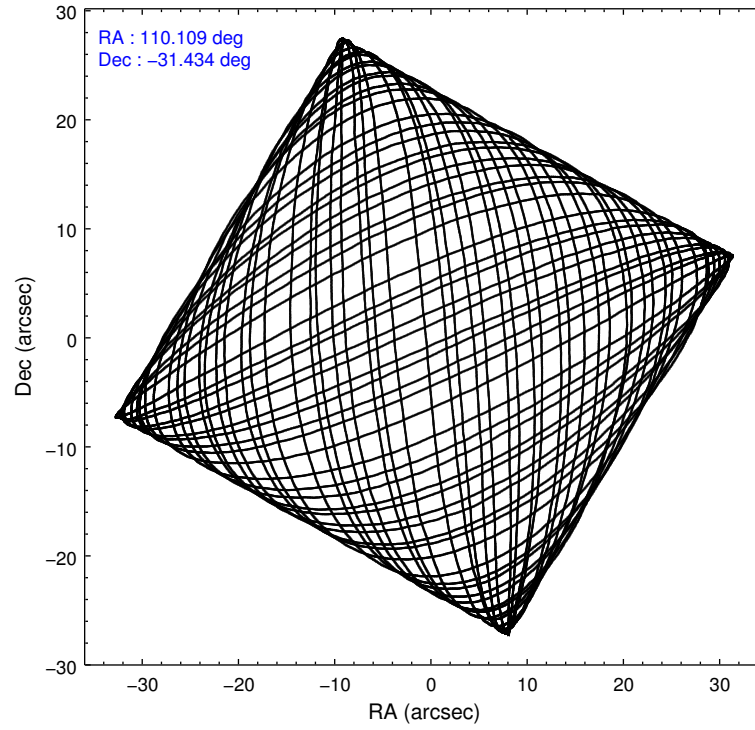
	segment 1	segment 2	segment 3
level 1 events	683808	665838	686475
rejected events	23870	22472	23813
rejected %	3%	3%	3%

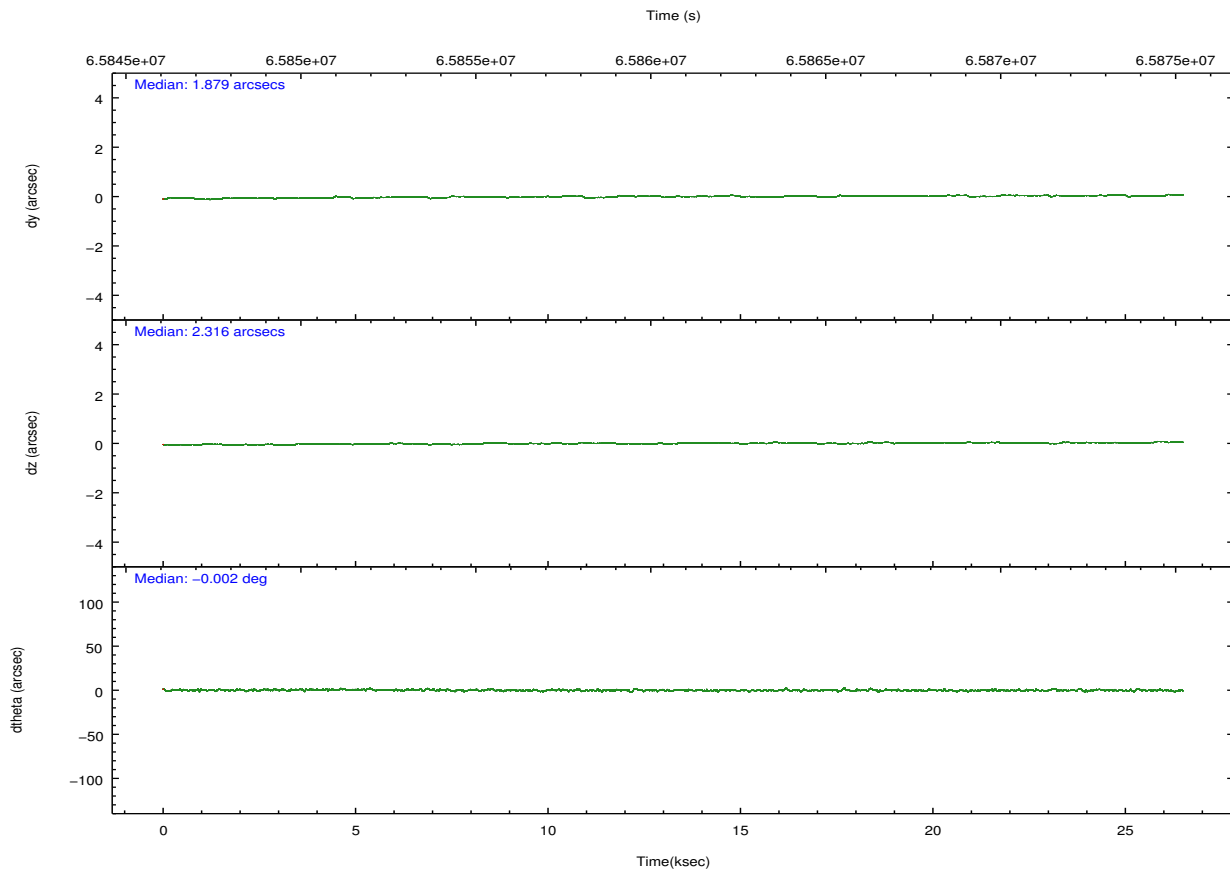
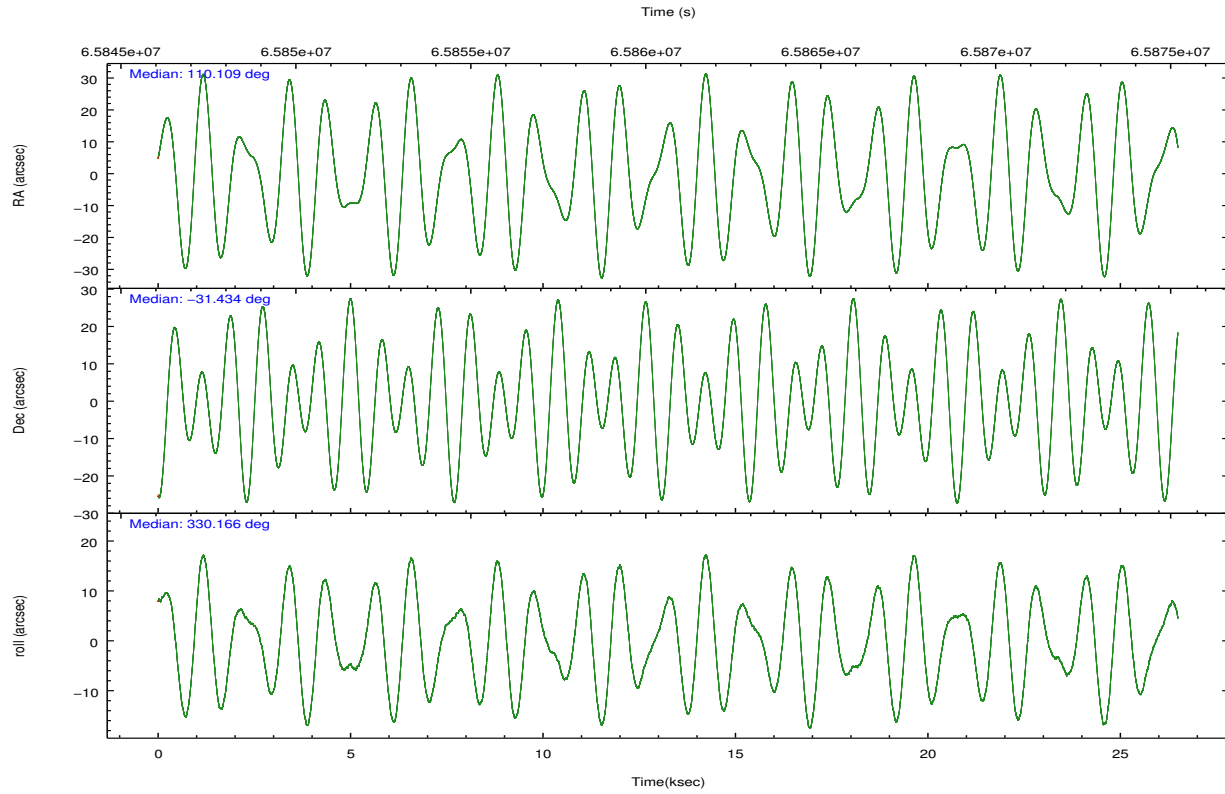
2.2 Compared Parameters

Parameter	Planned	Actual
Instrument	HRC	HRC
Detector	HRC-S	HRC-S
Grating	LETG	LETG
Data mode	OBSERVING	OBSERVING
Observation mode	POINTING	POINTING
[deg] Pointing RA	110.074949	110.1087957563978
[deg] Pointing Dec	-31.434749	-31.43362963729202
[deg] Pointing Roll	330.087076	330.1720671261845
[deg] Roll angle	15.000000	15.000000
[deg] Roll tolerance	75.000000	75.000000
Roll constraint allows 180D rotation	N	N
[mm] SIM focus pos	-1.429586	-1.428180813131781
[mm] SIM defocus	0.1037507710433287	0.1051558262725154
[mm] SIM translation stage pos	250.455976	250.466033080201
[mm] SIM translation stage offset	0	-0.01005468664627074
[s] Observation start time (MET)	65847883.184000	65847216.773703
Observation start date	2000-02-02T03:03:39	2000-02-02T02:53:36
[s] Observation end time (MET)	65873883.184000	65874749.812206
Observation end date	2000-02-02T10:16:59	2000-02-02T10:32:29

Parameter	Planned	Actual
Obspar format version number	7	7
Obspar file type	PREDICTED	ACTUAL
Obspar update status	NONE	UPDATED

2.3 Aspect



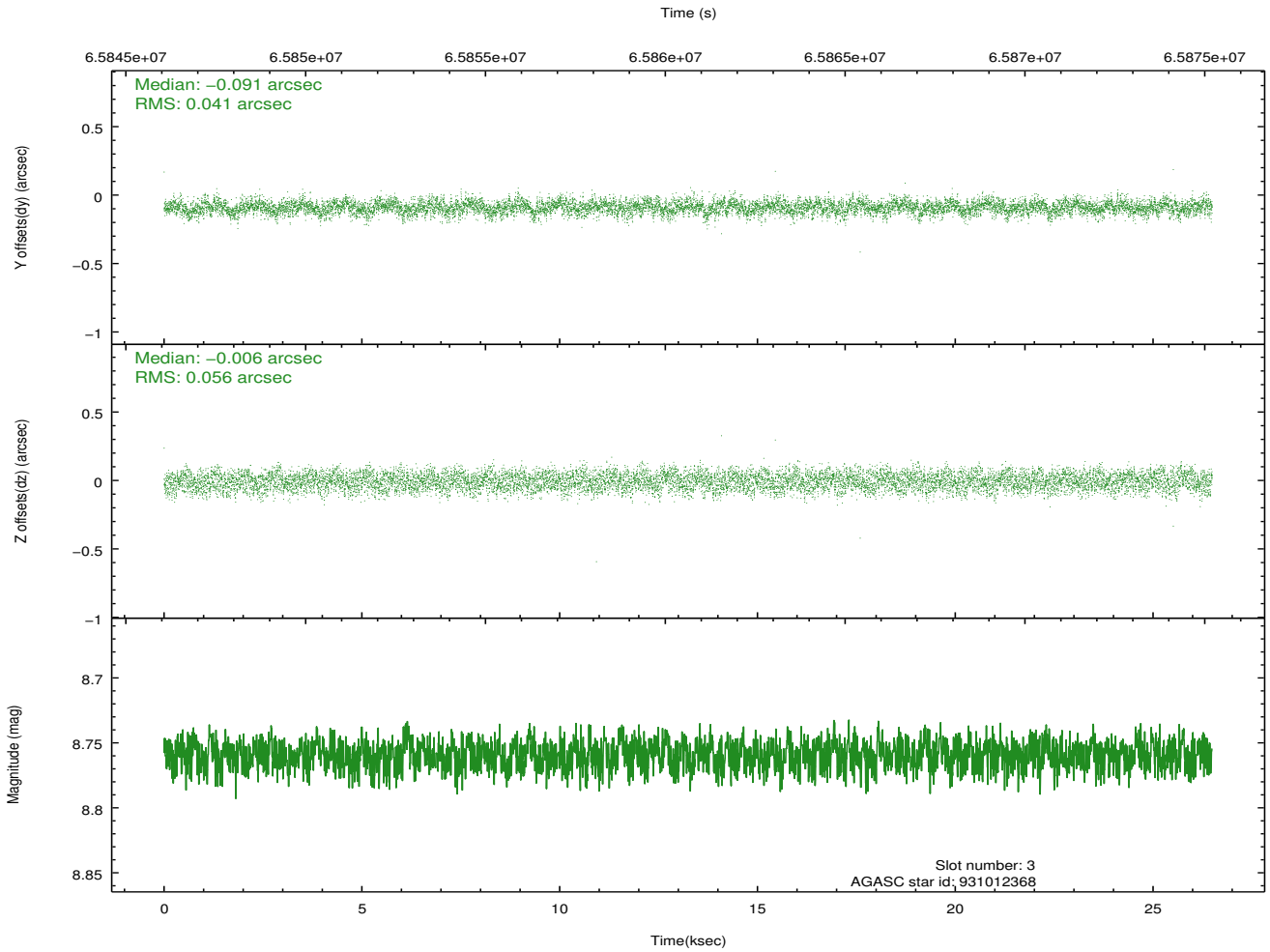
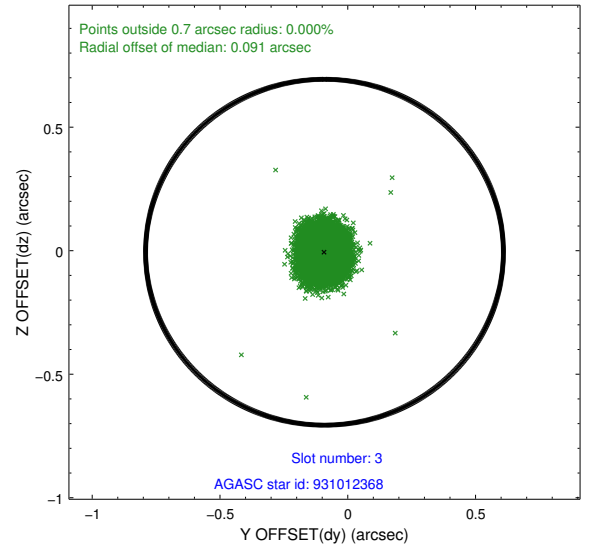
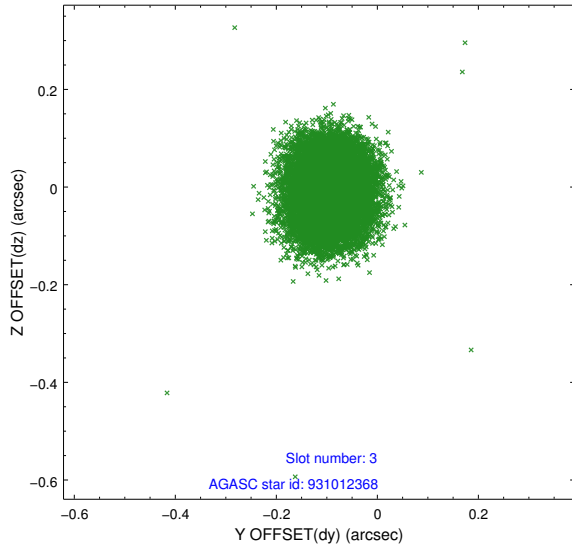


Slot Statistics

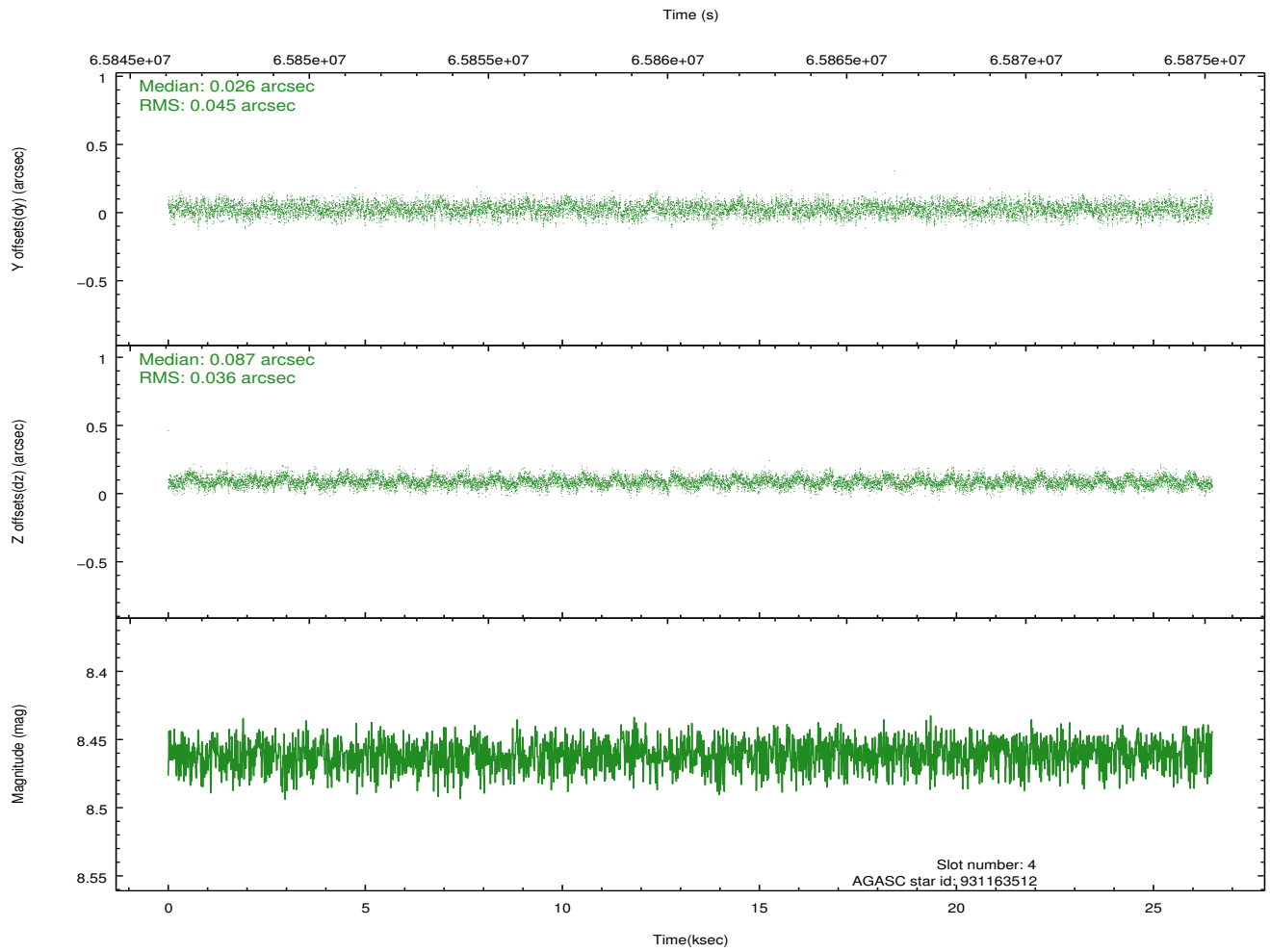
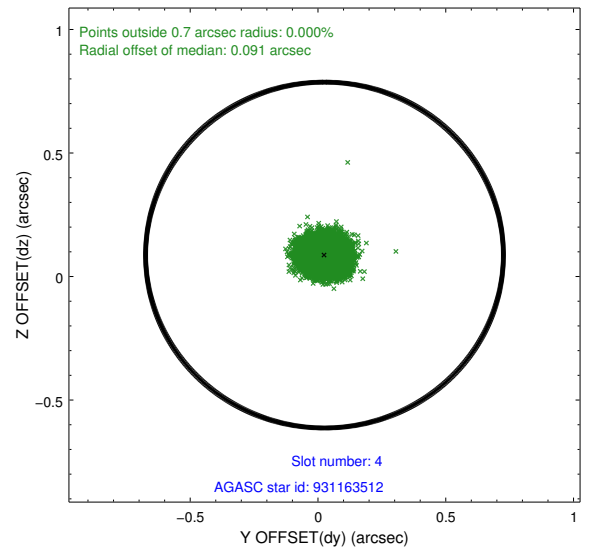
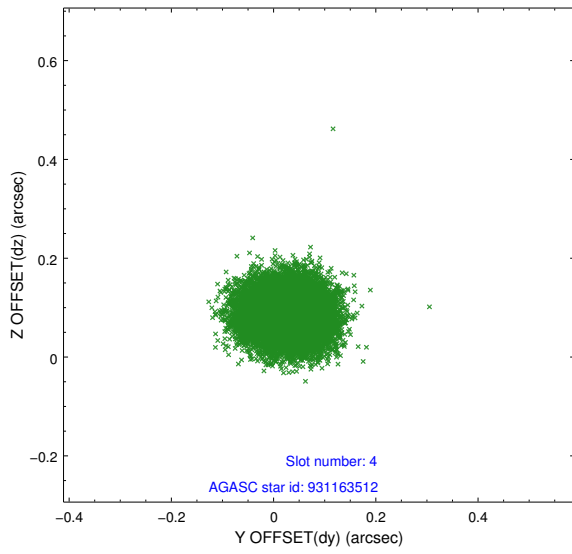
slot	status	id	mag	n_pts	med_dy	med_dz	dr1	dr2	ra	dec	mean_y	mean_z
0	FID	HRC-S-1	7.01	6460	0.114	-0.065	0.008	0.016	0.000000	0.000000	-1155.93	-450.64
1	FID	HRC-S-2	7.01	6459	0.147	-0.101	0.006	0.011	0.000000	0.000000	1243.60	-443.44
2	FID	HRC-S-3	7.03	6459	0.129	-0.136	0.009	0.020	0.000000	0.000000	-1158.42	578.75
3	GUIDE	931012368	8.76	12919	-0.091	-0.006	0.074	0.117	109.359817	-31.783345	-1267.34	-2185.53
4	GUIDE	931163512	8.46	12919	0.026	0.087	0.061	0.099	110.894384	-31.299941	1947.38	1669.58
5	GUIDE	931005504	9.34	12909	-0.017	-0.010	0.080	0.130	109.438314	-31.669733	-1265.70	-1711.00
6	GUIDE	931160352	8.64	12916	-0.083	-0.052	0.075	0.120	110.268138	-30.864891	-505.64	2075.16
7	GUIDE	931166928	9.65	12910	0.166	-0.016	0.088	0.144	110.516751	-31.454886	1213.70	611.59

2.4 Star Slots

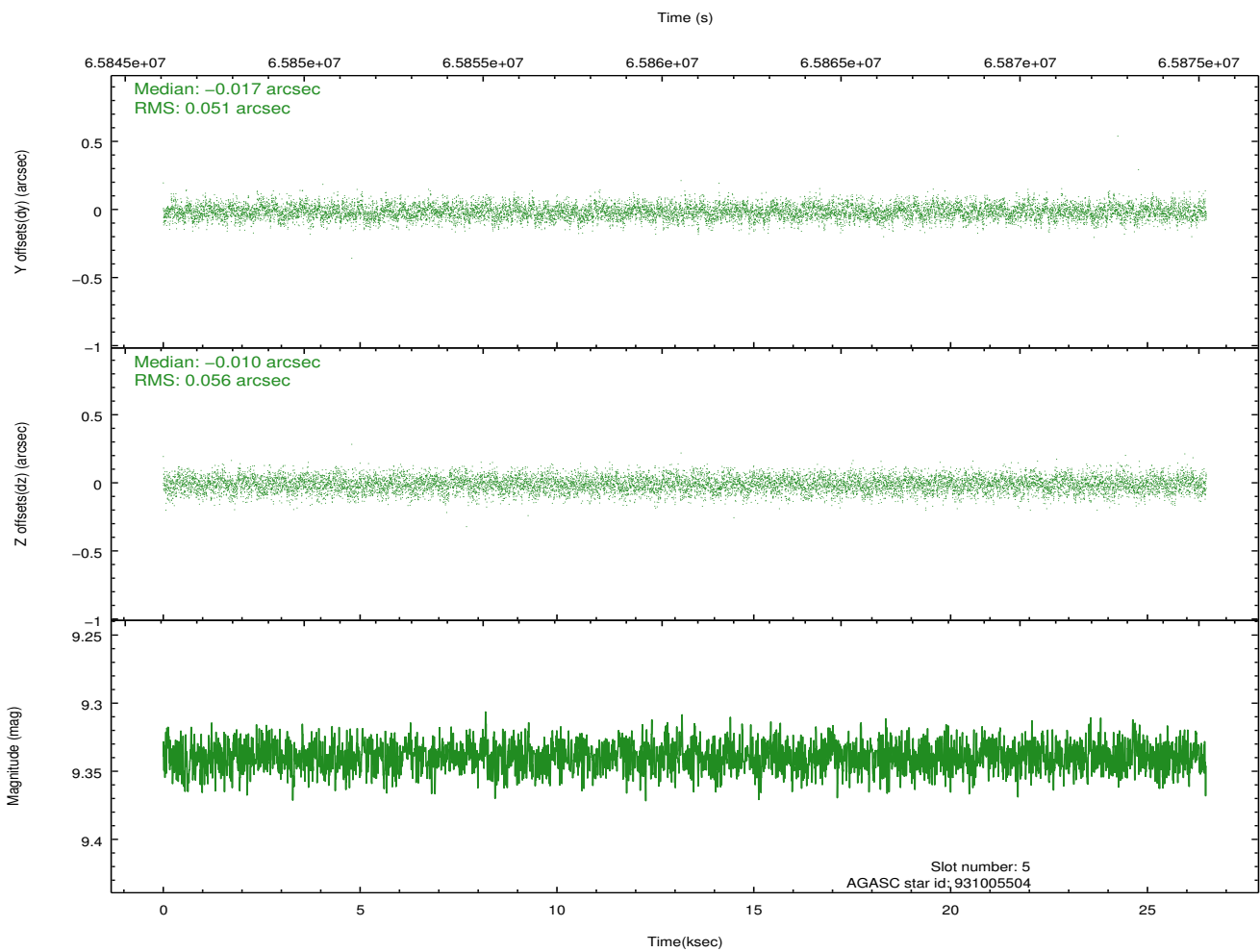
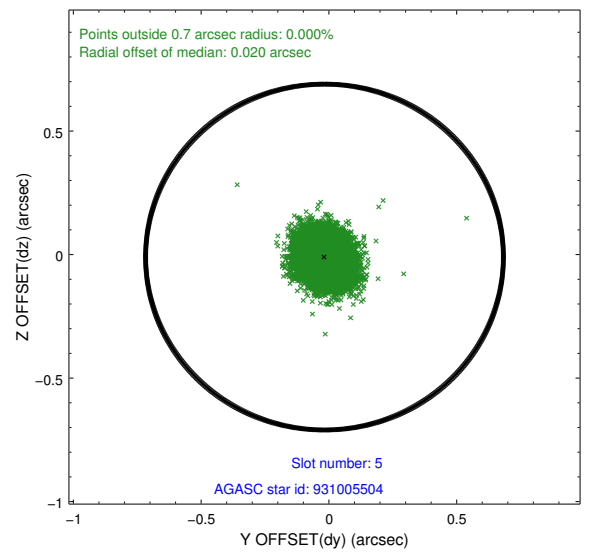
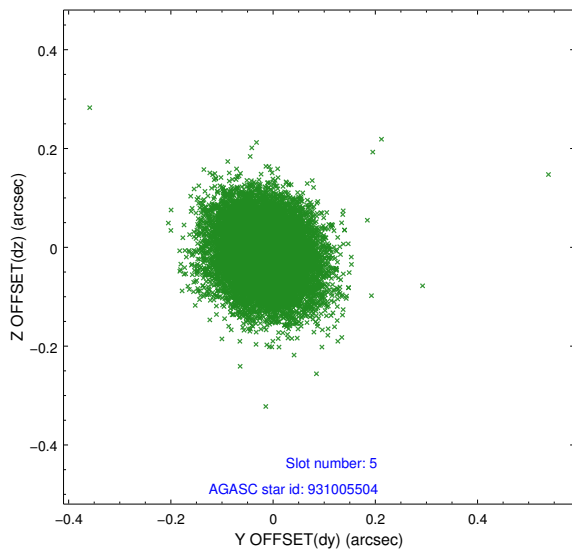
2.4.1 Slot 3



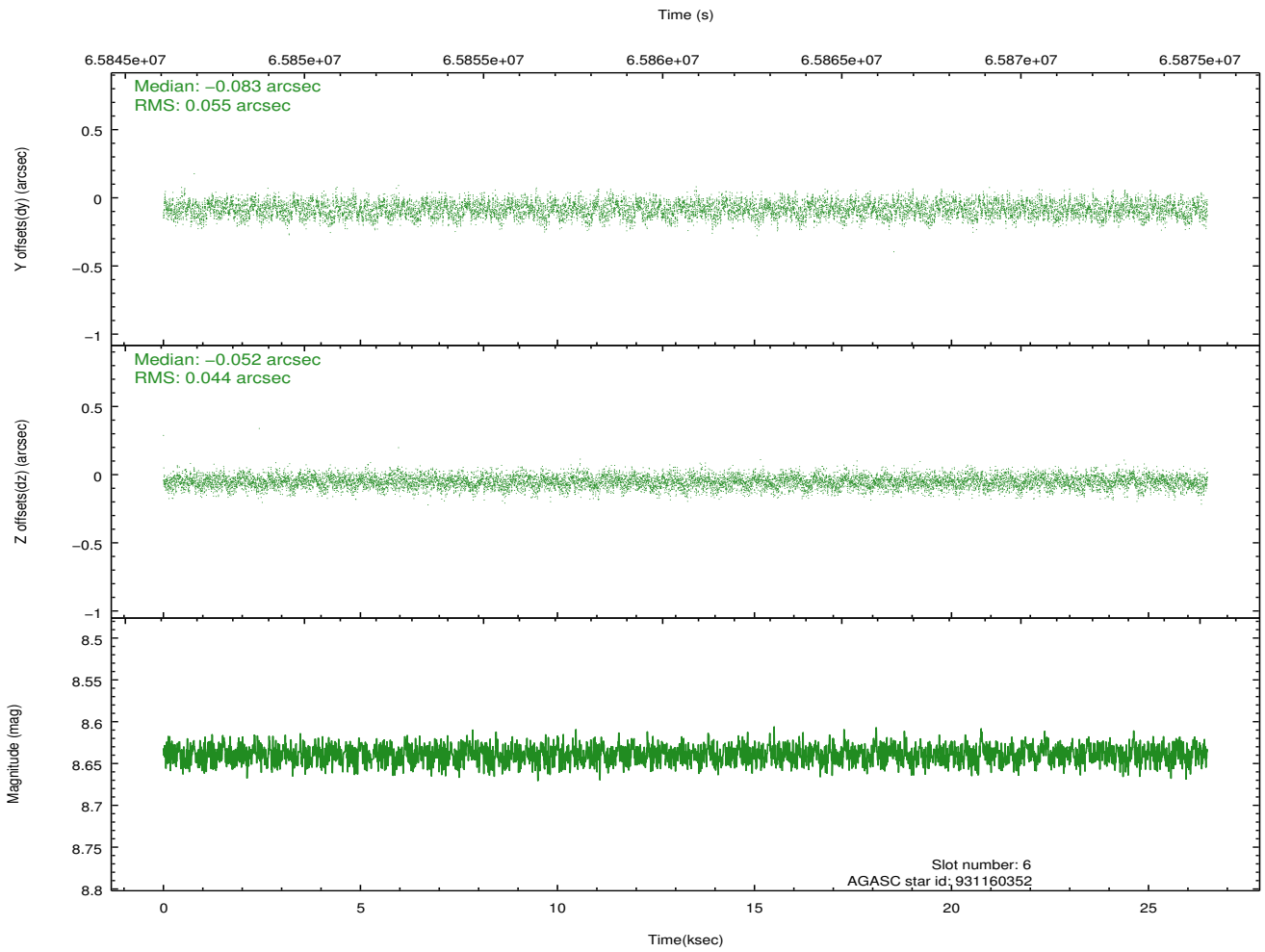
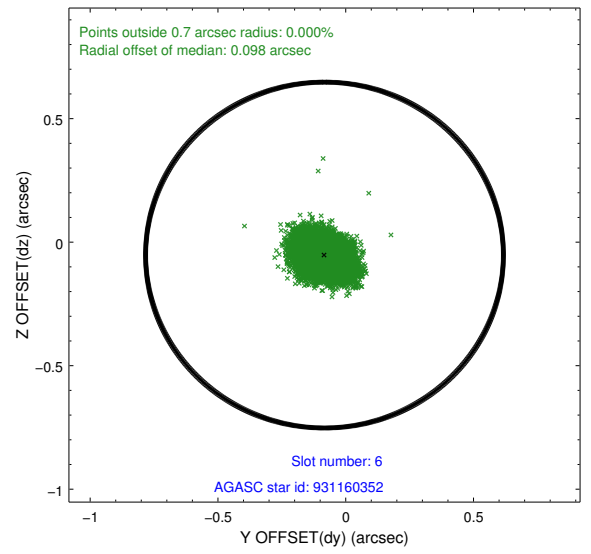
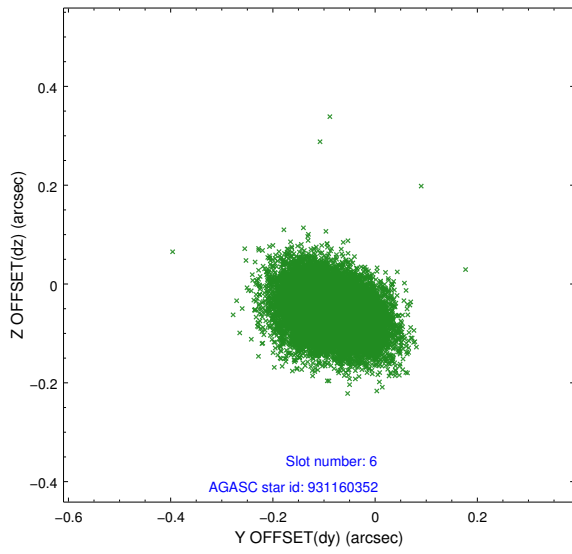
2.4.2 Slot 4



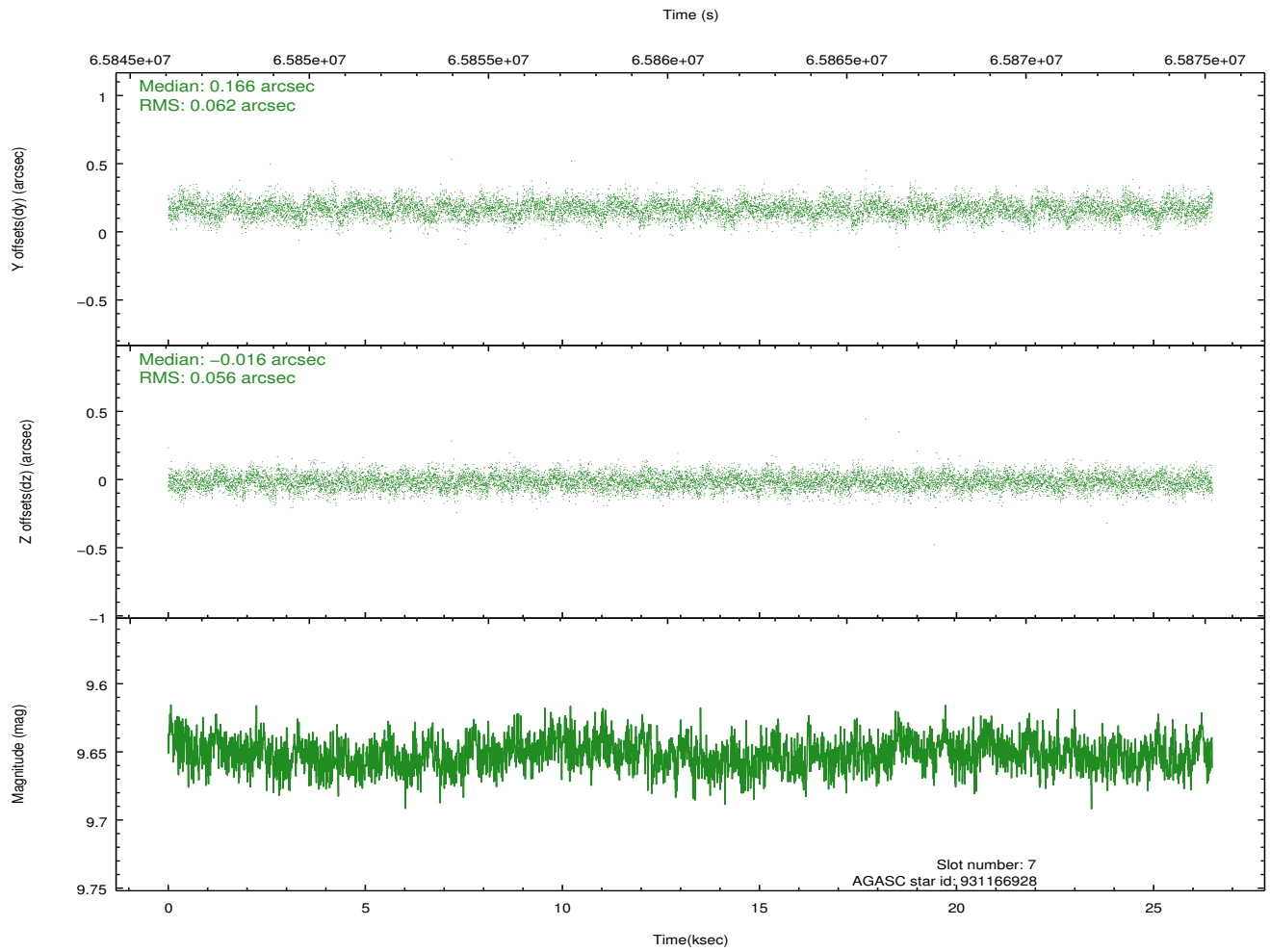
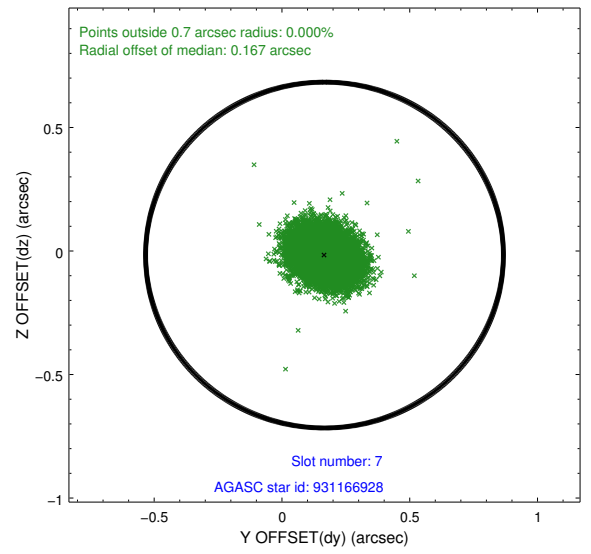
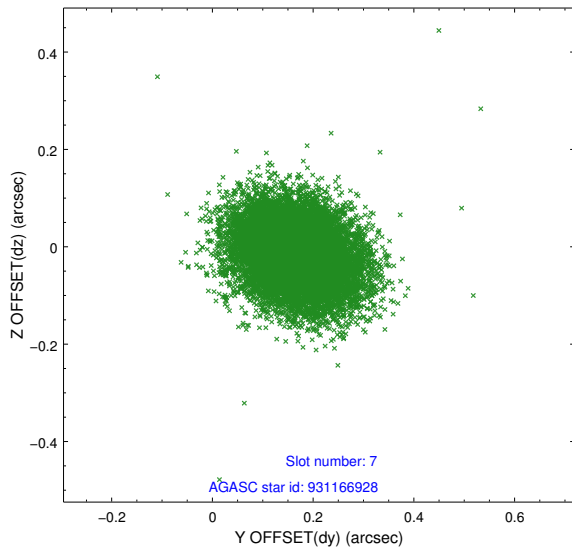
2.4.3 Slot 5



2.4.4 Slot 6

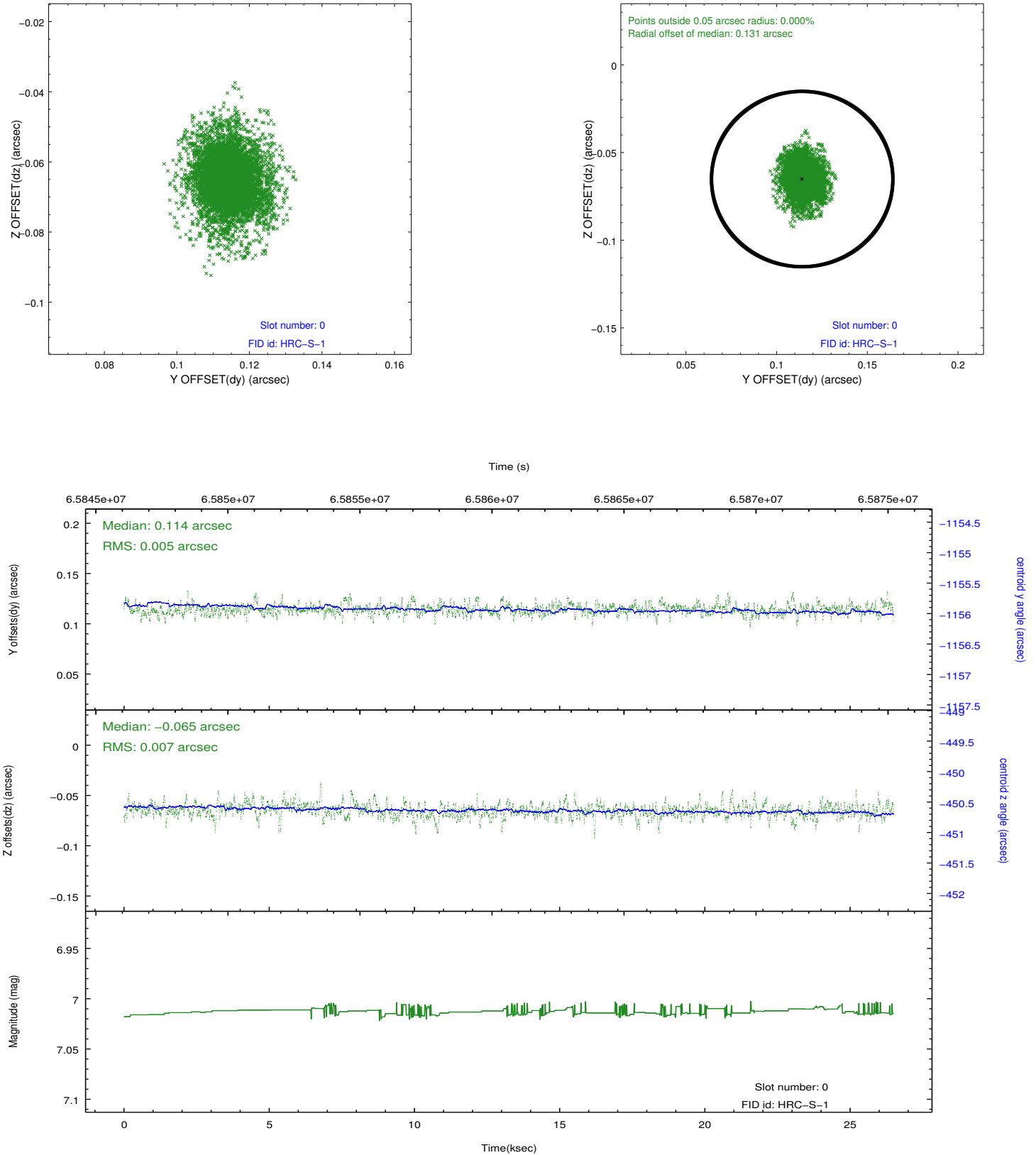


2.4.5 Slot 7

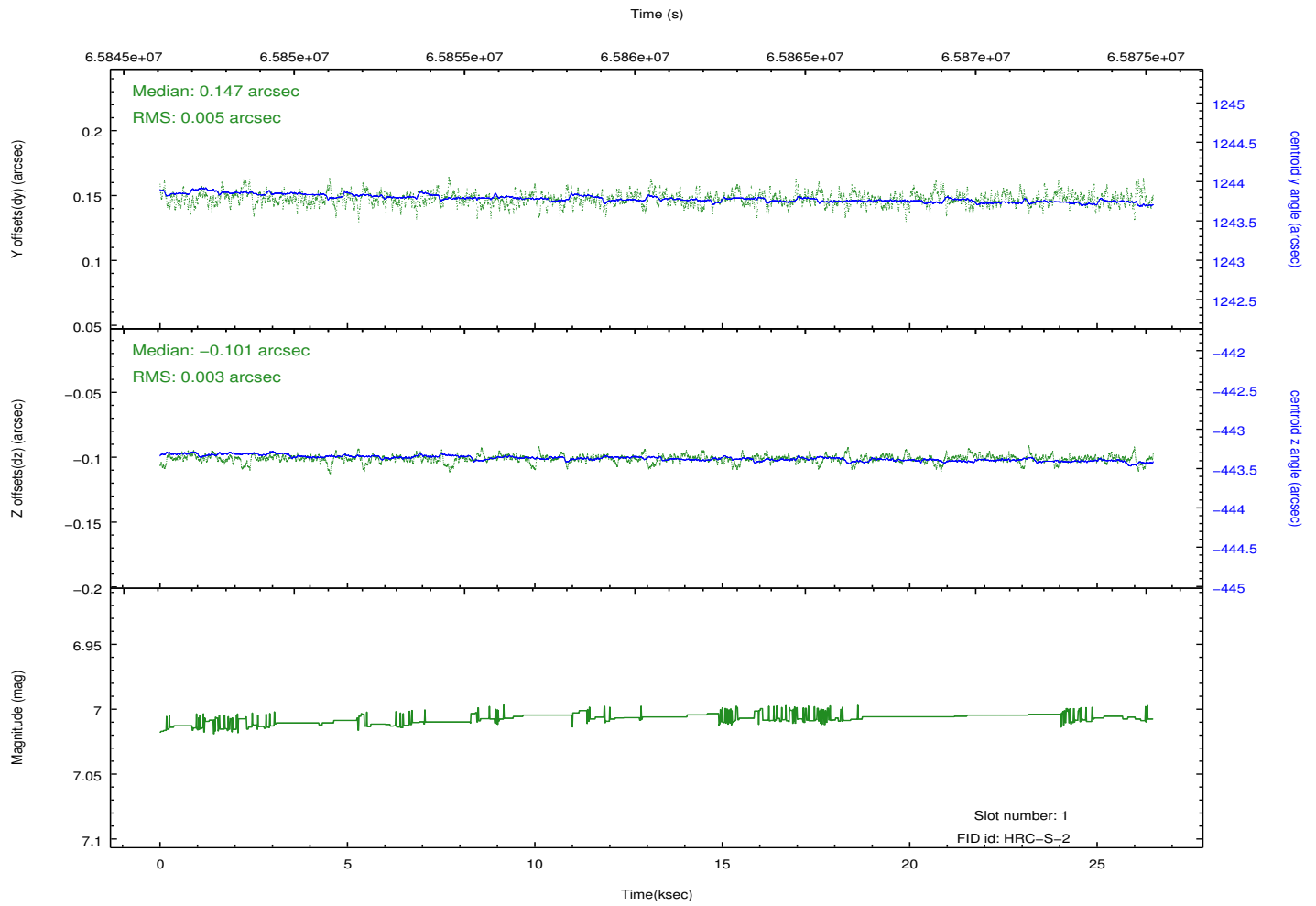
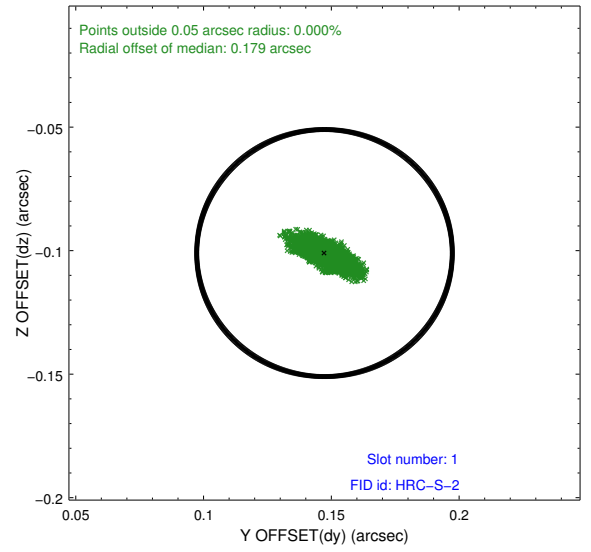
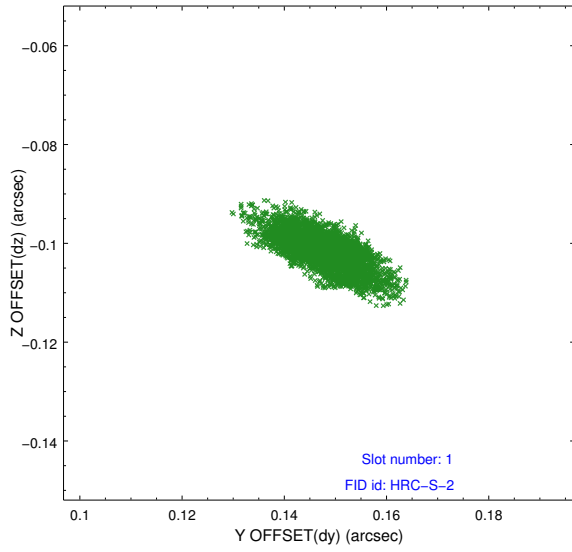


2.5 FID Slots

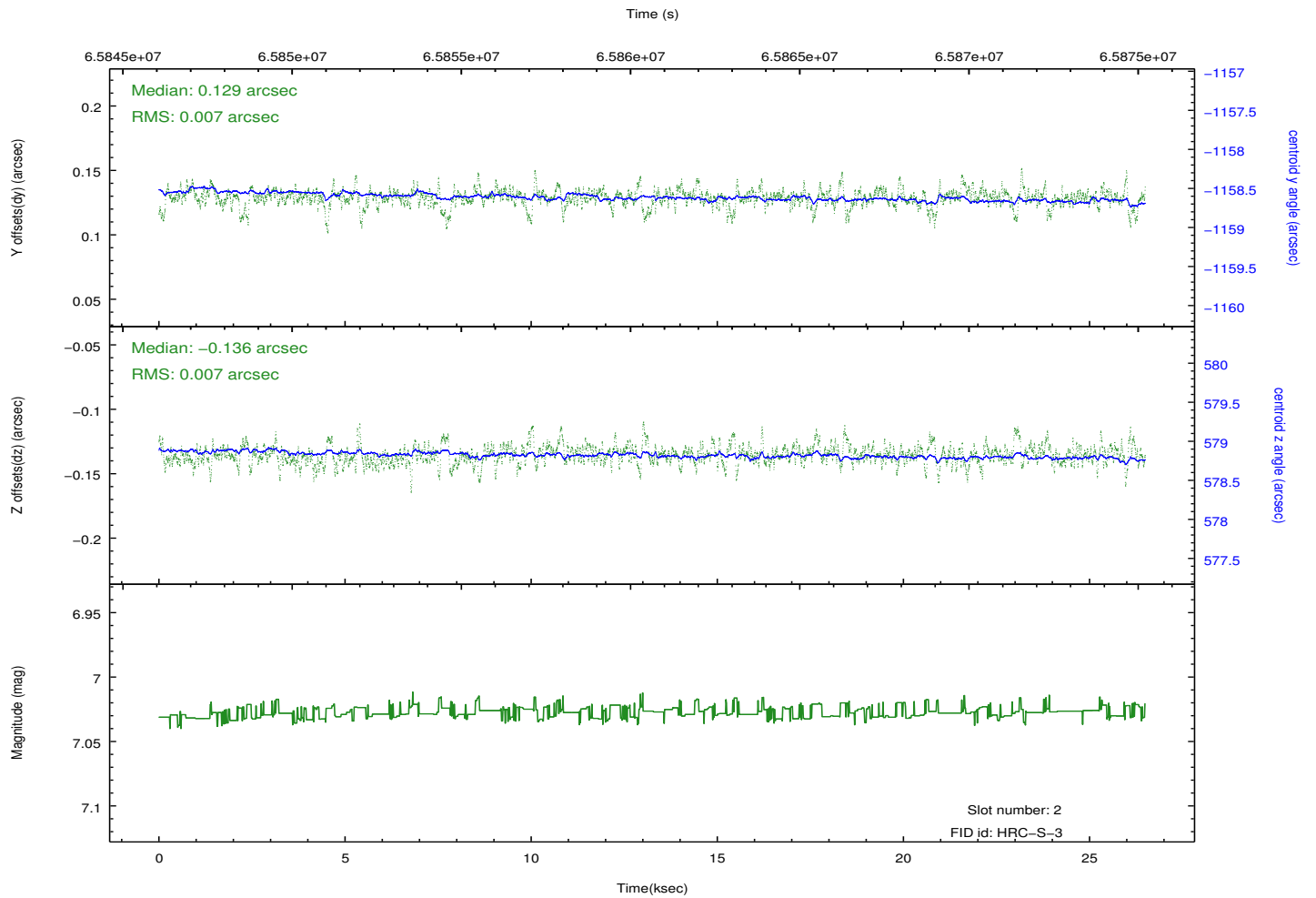
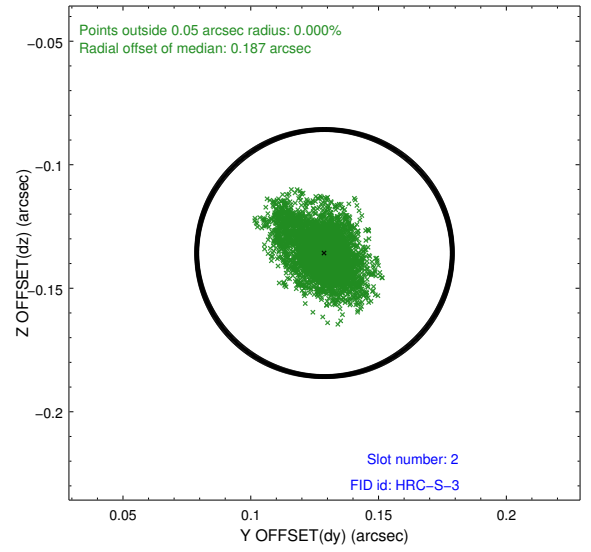
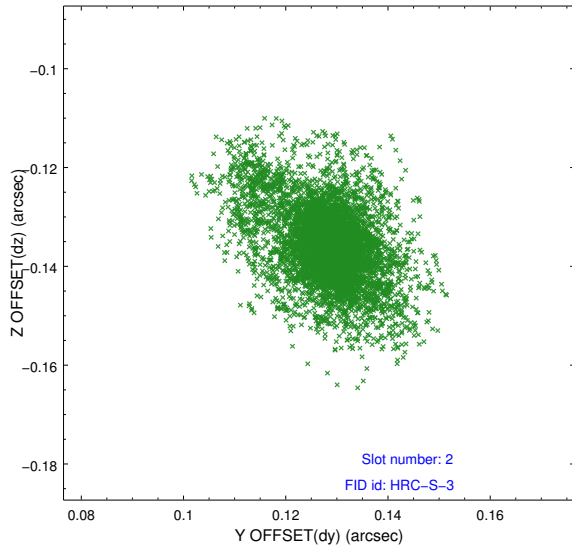
2.5.1 Slot 0



2.5.2 Slot 1

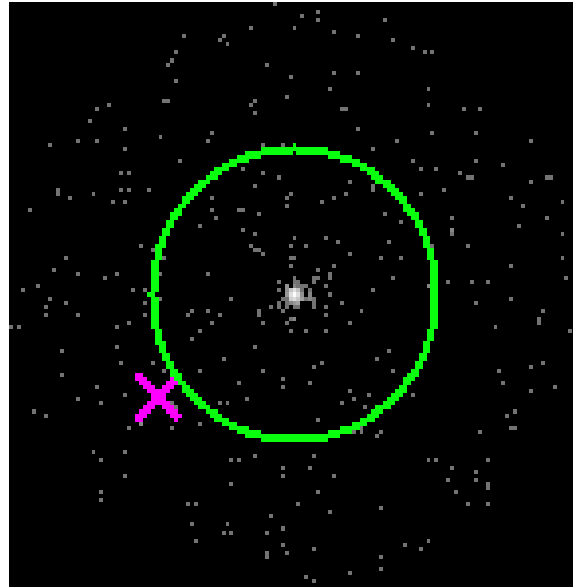


2.5.3 Slot 2

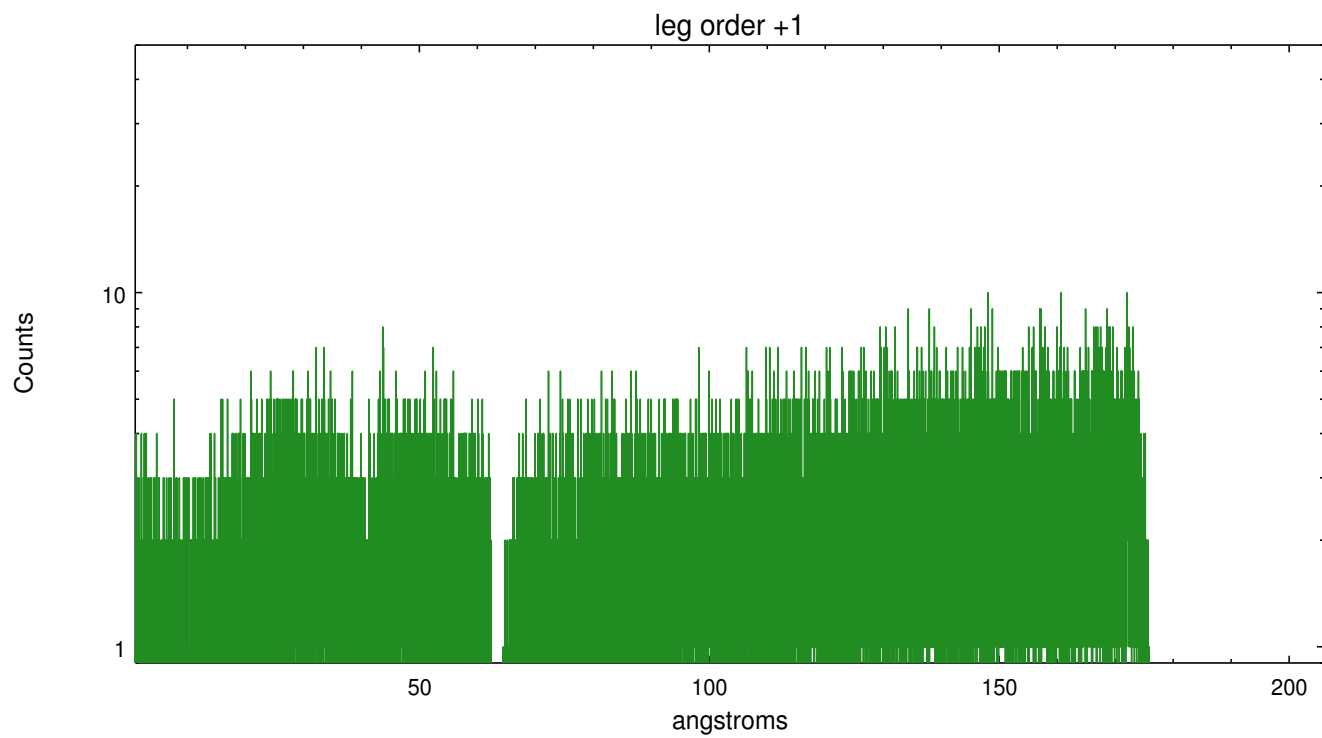
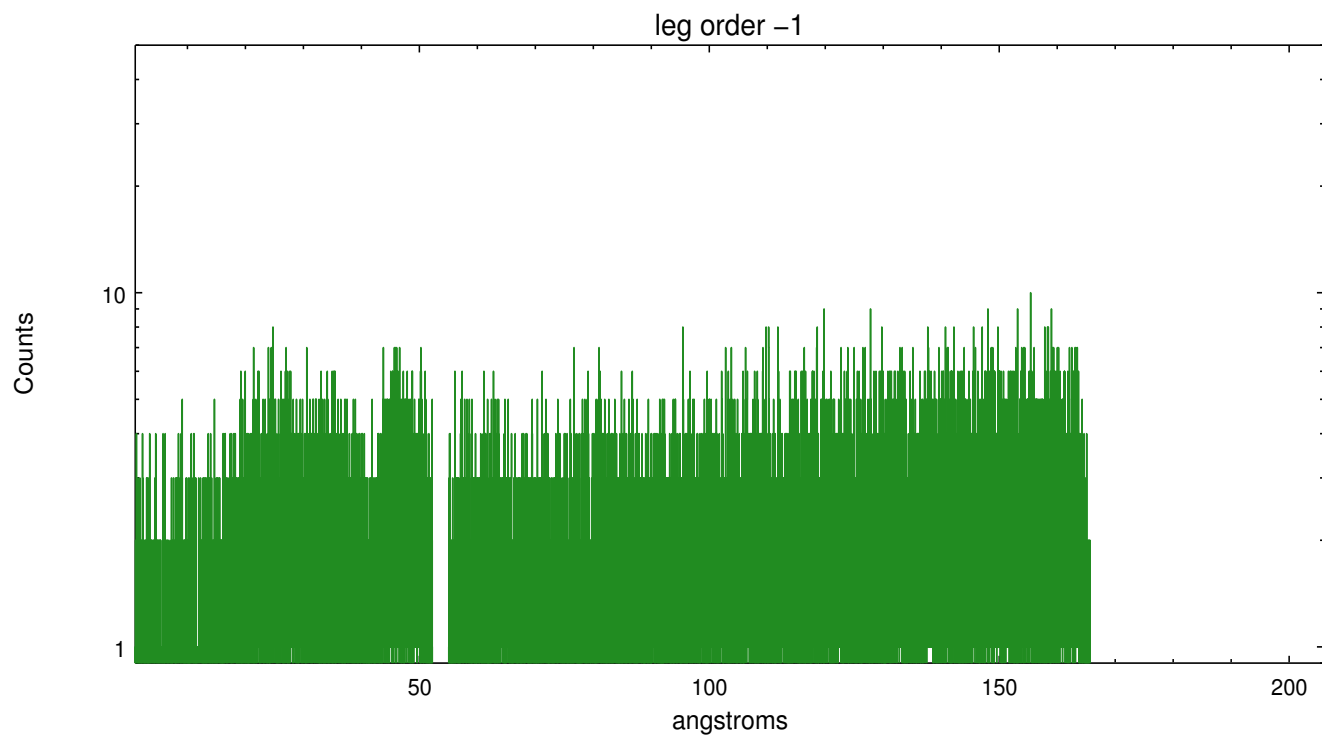


3 Gratings

3.1 LETG Arm



LETG Zero Order



A Summary

A.1 Status

V&V Scientist	Joy Nichols
V&V Date (YYYY-MM-DD)	2012.08.22
V&V Edition	1
V&V Disposition and Status	OK
V&V Charge Time	26.263

A.2 Comments

Roll constraint met.