

# V&V Reference Report

## L2 ASCDS Version : 8.4.5

Observation 755 - L2 Version 3  
Chandra X-Ray Center

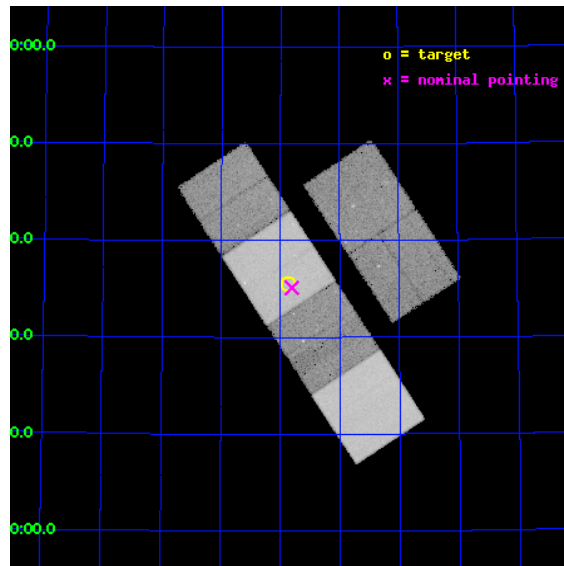
L2 Processing Date : Sep 2 2012

## Contents

<b>1</b>	<b>Front</b>	<b>2</b>
<b>2</b>	<b>OBI</b>	<b>3</b>
2.1	OBI . . . . .	3
2.1.1	Images . . . . .	3
2.1.2	Bias . . . . .	3
2.1.3	Parameters . . . . .	4
2.1.4	Events . . . . .	4
2.2	Compared Parameters . . . . .	5
2.3	Aspect . . . . .	6
2.4	Star Slots . . . . .	9
2.4.1	Slot 3 . . . . .	9
2.4.2	Slot 4 . . . . .	10
2.4.3	Slot 5 . . . . .	11
2.4.4	Slot 6 . . . . .	12
2.4.5	Slot 7 . . . . .	13
2.5	FID Slots . . . . .	14
2.5.1	Slot 0 . . . . .	14
2.5.2	Slot 1 . . . . .	15
2.5.3	Slot 2 . . . . .	16
<b>A</b>	<b>Summary</b>	<b>17</b>
A.1	Status . . . . .	17
A.2	Comments . . . . .	17

# 1 Front

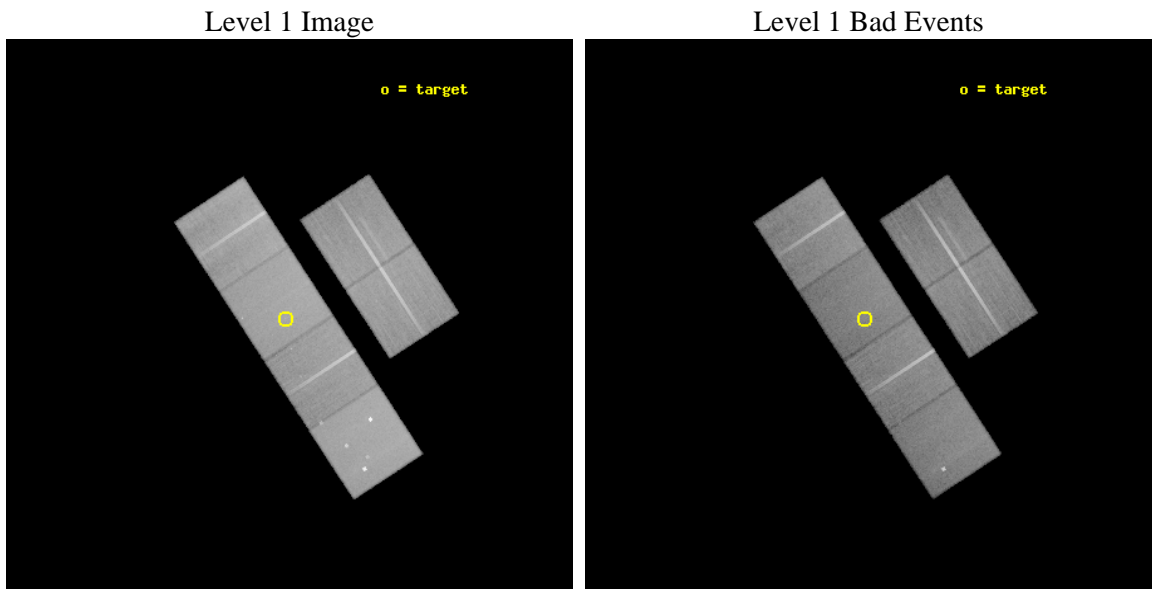
seq_num	500051	Sequence number
obs_id	755	Observation id
title	BOW SHOCK NEBULAE FROM HIGH VELOCITY NEUTRON STARS	Proposal title
observer	James Cordes	Principal investigator
object	B2224+65	Source name
dtcycle	0	&#160
cycle	P	events from which exps? Prim/Second/Both
ra_targ	336.468333	Observer's specified target RA [deg]
dec_targ	65.592722	Observer's specified target Dec [deg]
ra_nom	336.45182916672	Nominal RA [deg]
dec_nom	65.585579451731	Nominal Dec [deg]
roll_nom	236.75439479094	Nominal Roll [deg]
revision	3	Processing version of data
ontime	49748.876648143	Sum of GTIs [s]
livetime	49118.926416847	Livetime [s]
ontime2	49752.158668295	Sum of GTIs [s]
ontime3	49751.994627908	Sum of GTIs [s]
ontime5	49748.835628048	Sum of GTIs [s]
ontime6	49748.794617996	Sum of GTIs [s]
ontime7	49748.876648143	Sum of GTIs [s]
ontime8	49751.953348681	Sum of GTIs [s]
l2events	467797	Number of level 2 events



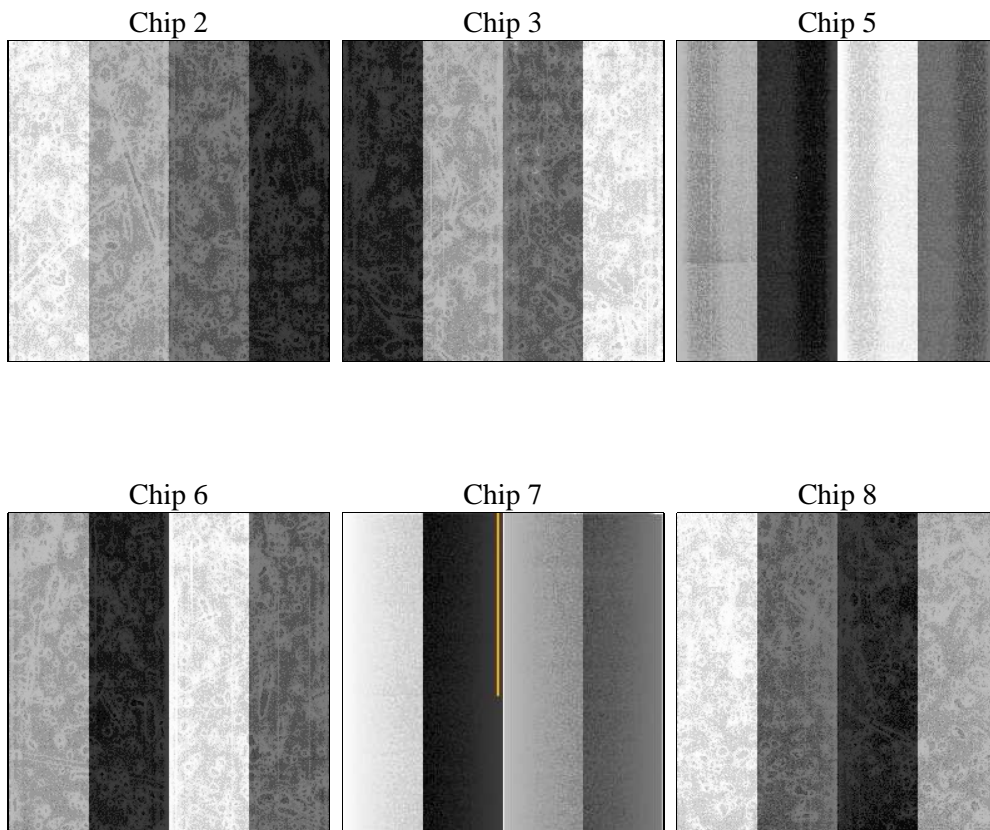
## 2 OBI

### 2.1 OBI

#### 2.1.1 Images



#### 2.1.2 Bias



### 2.1.3 Parameters

obi_num	0	Obi number	sched_exp_time	50000.000000	[s] Scheduled observation exposure time
ascdsver	8.4.5	Processing system revision	ontime	49748.876648143	Sum of GTIs [s]
caldbver	4.5.1.1	&#160	ontime2	49752.158668295	Sum of GTIs [s]
date	2012-09-02T13:14:46	Date and time of file creation	ontime3	49751.994627908	Sum of GTIs [s]
revision	3	Processing version of data	ontime5	49748.835628048	Sum of GTIs [s]
			ontime6	49748.794617996	Sum of GTIs [s]
			ontime7	49748.876648143	Sum of GTIs [s]
			ontime8	49751.953348681	Sum of GTIs [s]
			l1events	2207065	Number of level 1 events

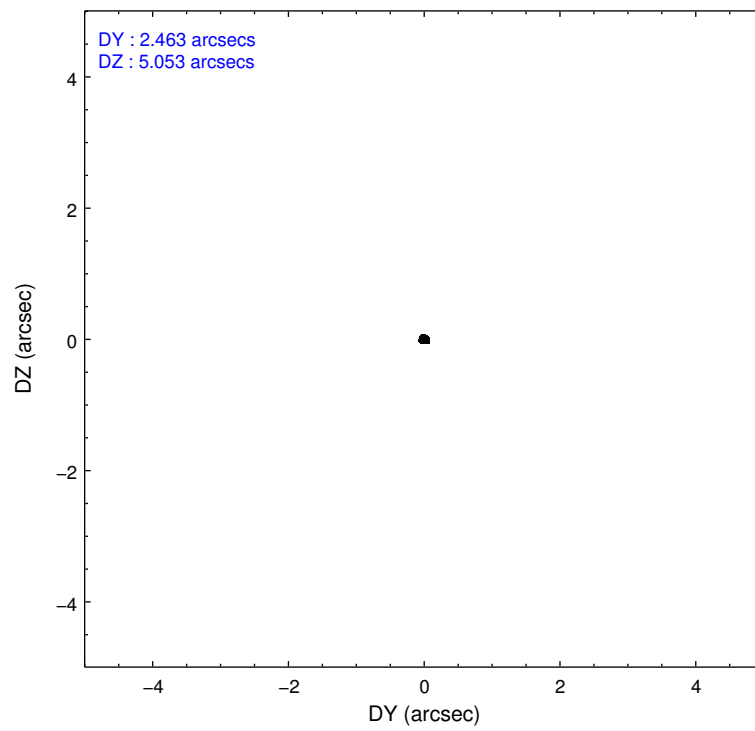
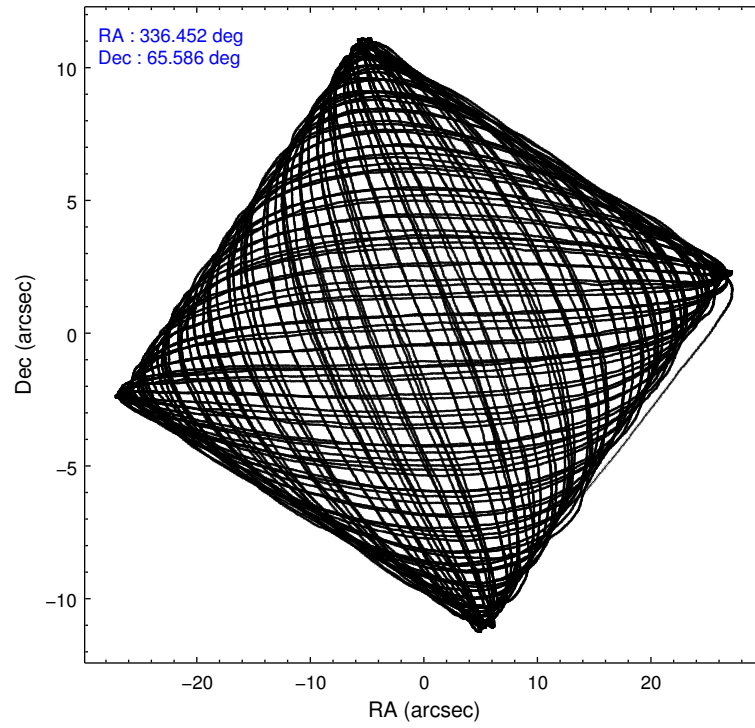
### 2.1.4 Events

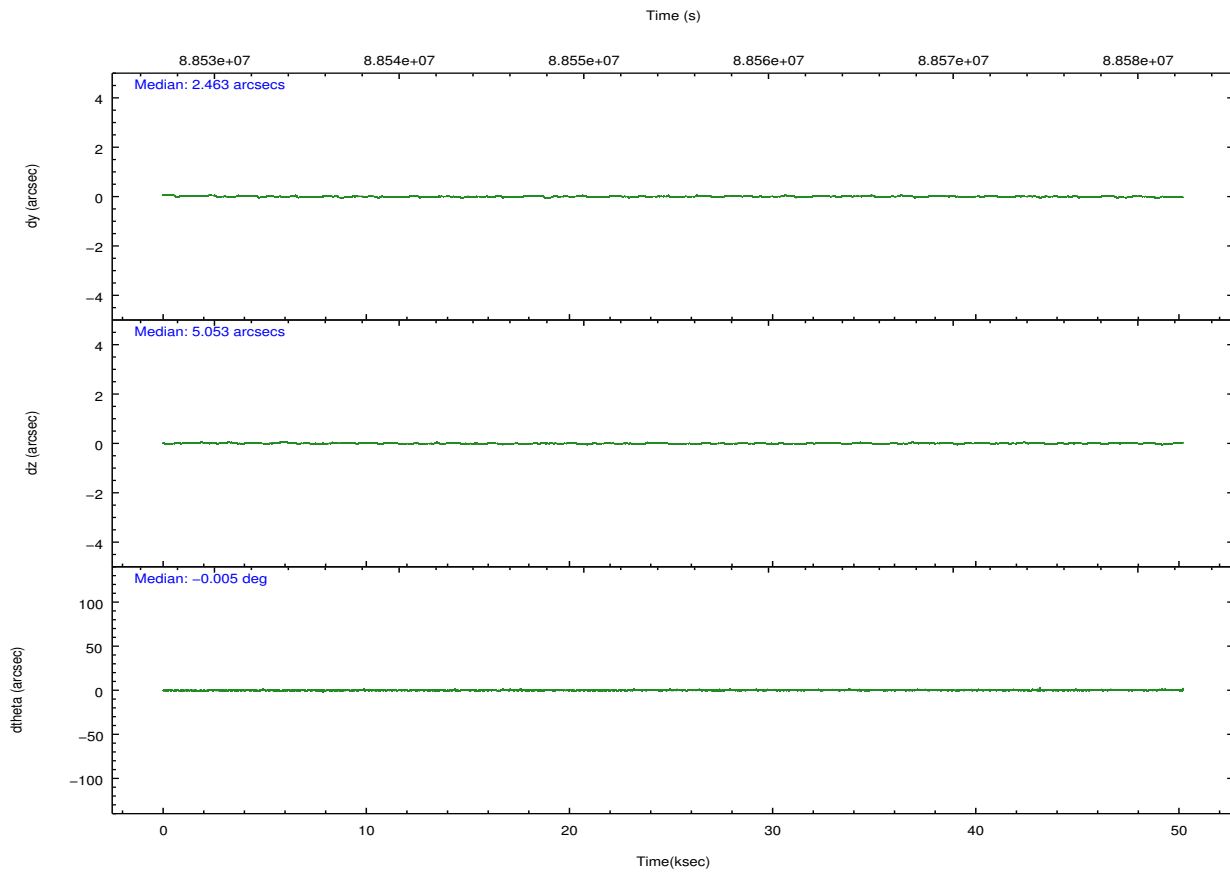
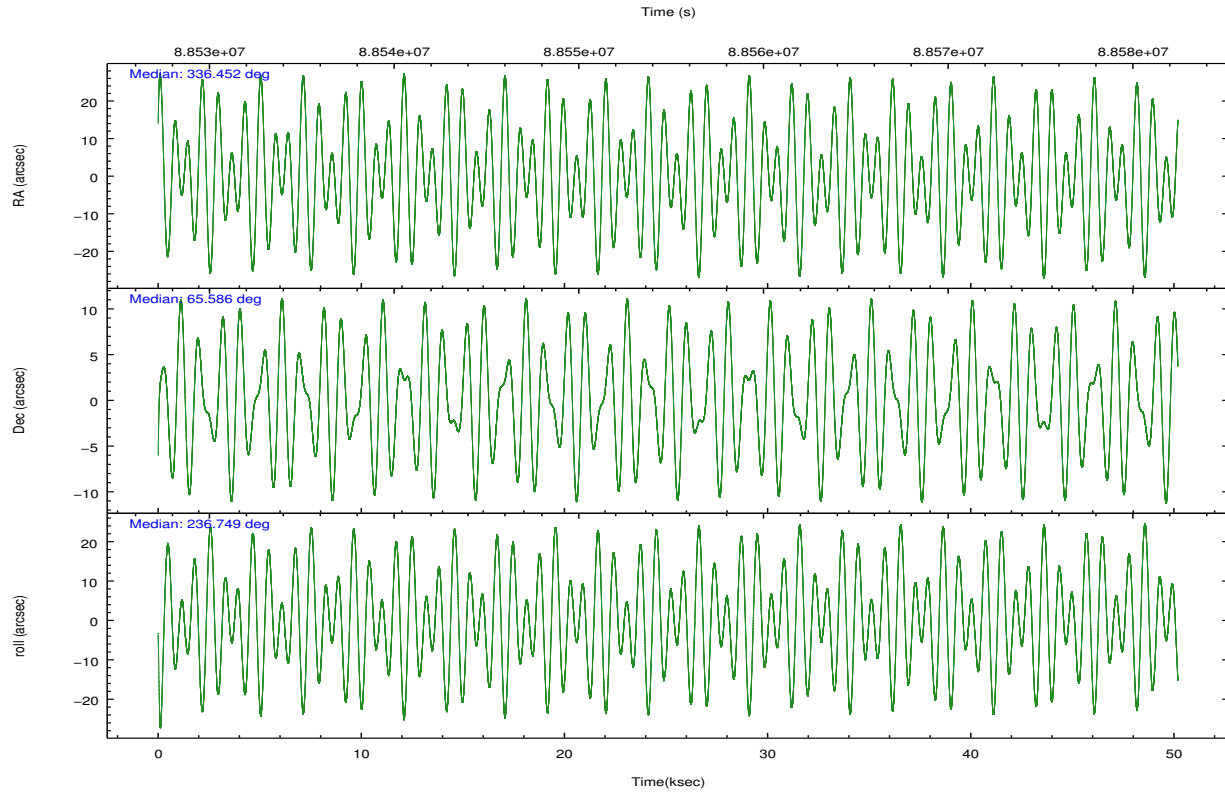
	ccd 2	ccd 3	ccd 5	ccd 6	ccd 7	ccd 8		ccd 2	ccd 3	ccd 5	ccd 6	ccd 7	ccd 8
level 1 events	333120	309585	447753	318396	395214	402997	grade 0 events	14837	14783	31112	14506	15405	24163
rejected events	298115	274966	239171	282633	231039	325081		4%	4%	6%	4%	3%	5%
rejected %	89%	88%	53%	88%	58%	80%	grade 1 events	139	132	551	129	376	216
								0%	0%	0%	0%	0%	0%
							grade 2 events	7388	6809	58269	7185	32214	16838
								2%	2%	13%	2%	8%	4%
							grade 3 events	3345	3480	8961	3638	14795	8473
								1%	1%	2%	1%	3%	2%
							grade 4 events	3276	3443	7966	3520	14984	8001
								0%	1%	1%	1%	3%	1%
							grade 5 events	10582	11563	34223	13027	37699	16172
								3%	3%	7%	4%	9%	4%
							grade 6 events	6161	6105	102291	6915	86786	20446
								1%	1%	22%	2%	21%	5%
							grade 7 events	287392	263270	204380	269476	192955	308688
								86%	85%	45%	84%	48%	76%

## 2.2 Compared Parameters

Parameter	Planned	Actual	Parameter	Planned	Actual
Instrument	ACIS	ACIS	Obspar format version number	7	7
Detector	ACIS-235678	ACIS-235678	Obspar file type	PREDICTED	ACTUAL
Grating	NONE	NONE	Obspar update status	NONE	UPDATED
Data mode	FAINT	FAINT	Number of optional ACIS chips dropped	0	0
Observation mode	POINTING	POINTING	On-chip summing requested	N	N
[deg] Pointing RA	336.455108	336.45182916672	Subarray requested	NONE	NONE
[deg] Pointing Dec	65.612906	65.58557945173079	Alternating exposures requested	N	N
[deg] Pointing Roll	236.594781	236.7543947909422	[s] Primary exposure time	0.000000	3.2
[mm] SIM focus pos	-0.684267	-0.6828225247311905			
[mm] SIM defocus	0	0.001444936568705701			
[mm] SIM translation stage pos	-190.132523	-190.1425803651734			
[mm] SIM translation stage offset	0	0.01005778216563158			
[s] Observation start time (MET)	88529931.184000	88529143.878932			
Observation start date	2000-10-21T15:37:47	2000-10-21T15:25:43			
[s] Observation end time (MET)	88579931.184000	88580793.630885			
Observation end date	2000-10-22T05:31:07	2000-10-22T05:46:33			
Read mode	TIMED	TIMED			

## 2.3 Aspect



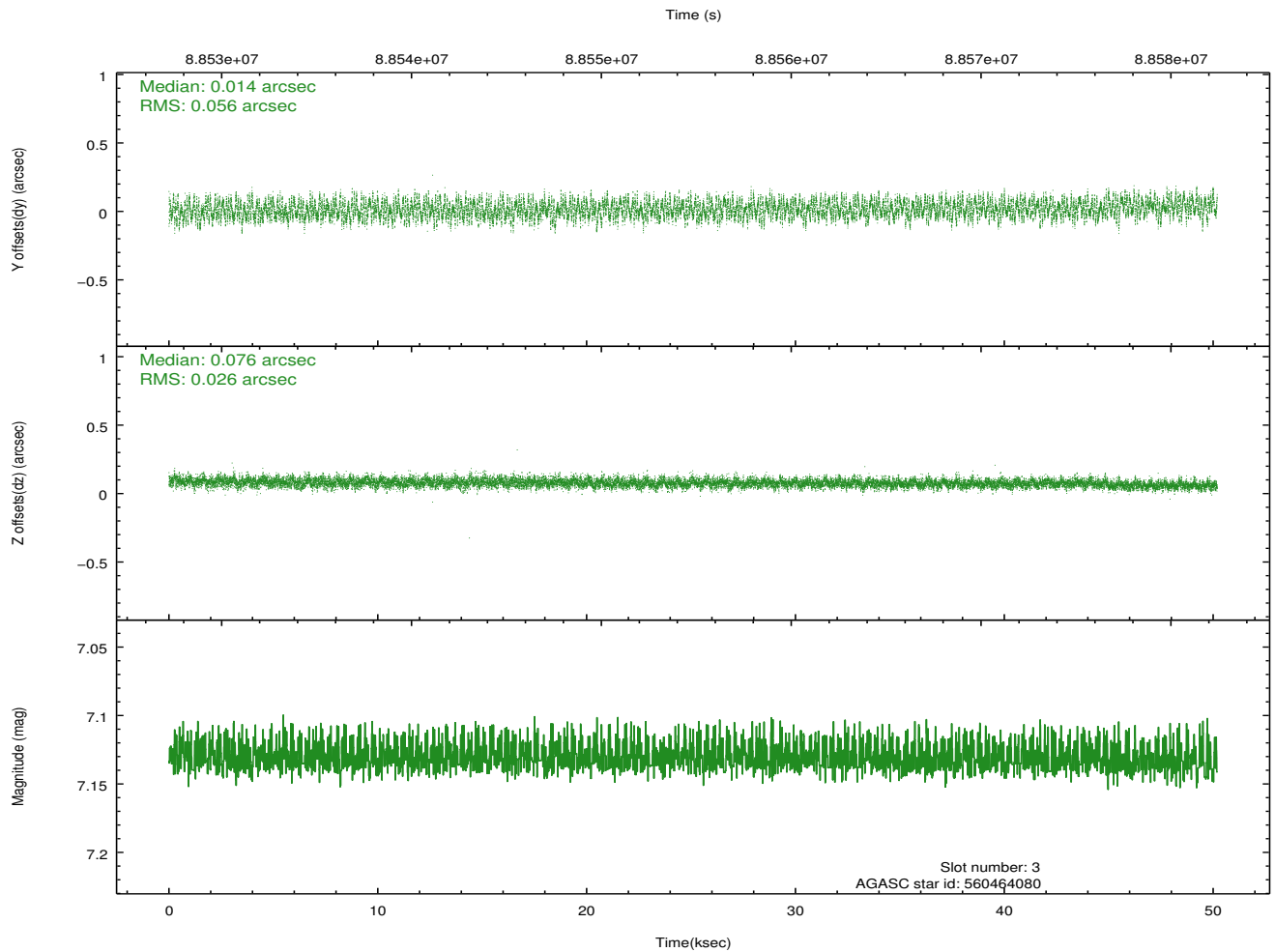
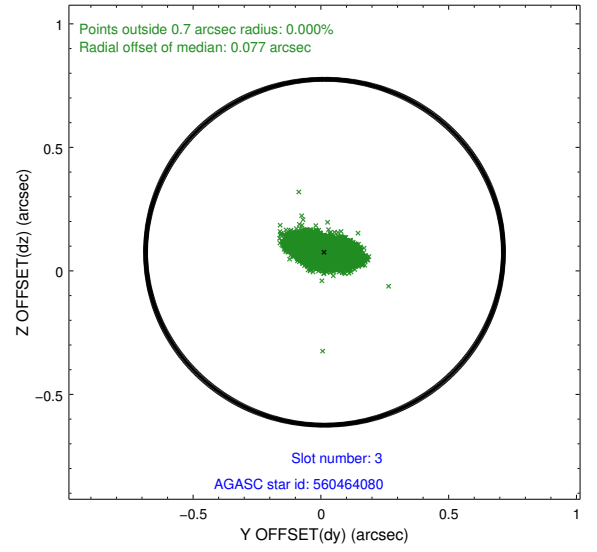
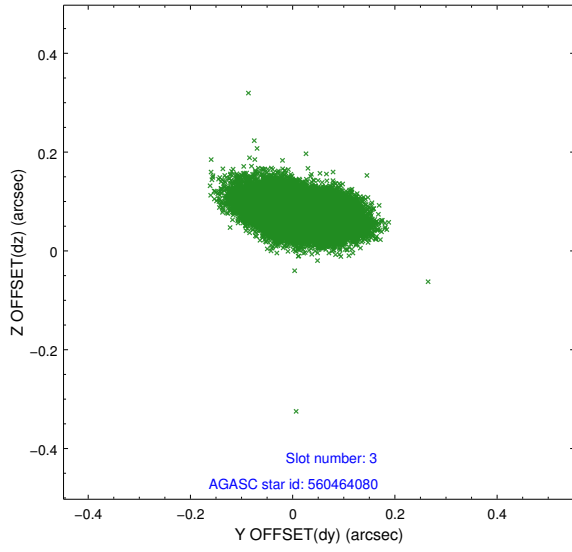


### Slot Statistics

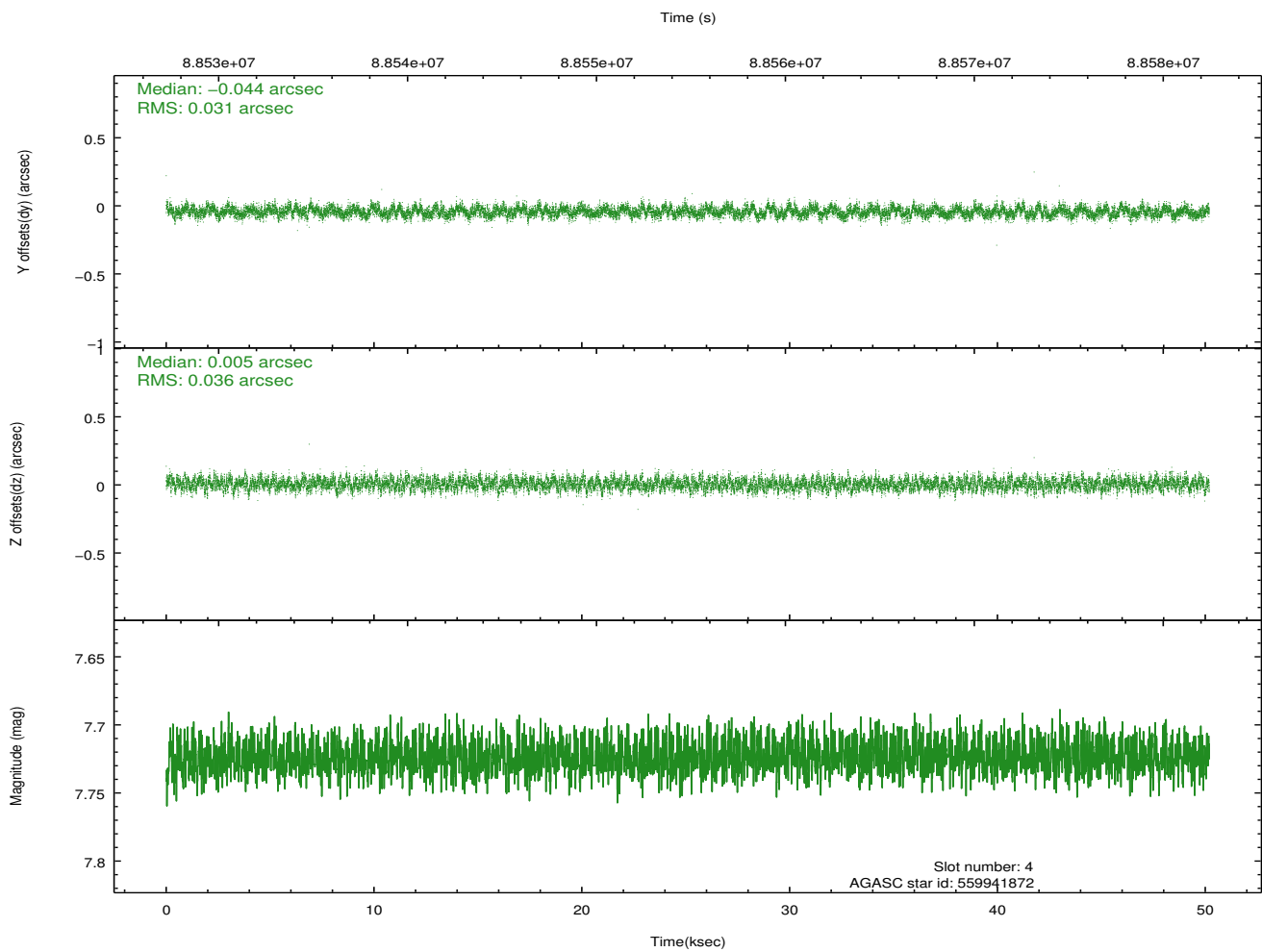
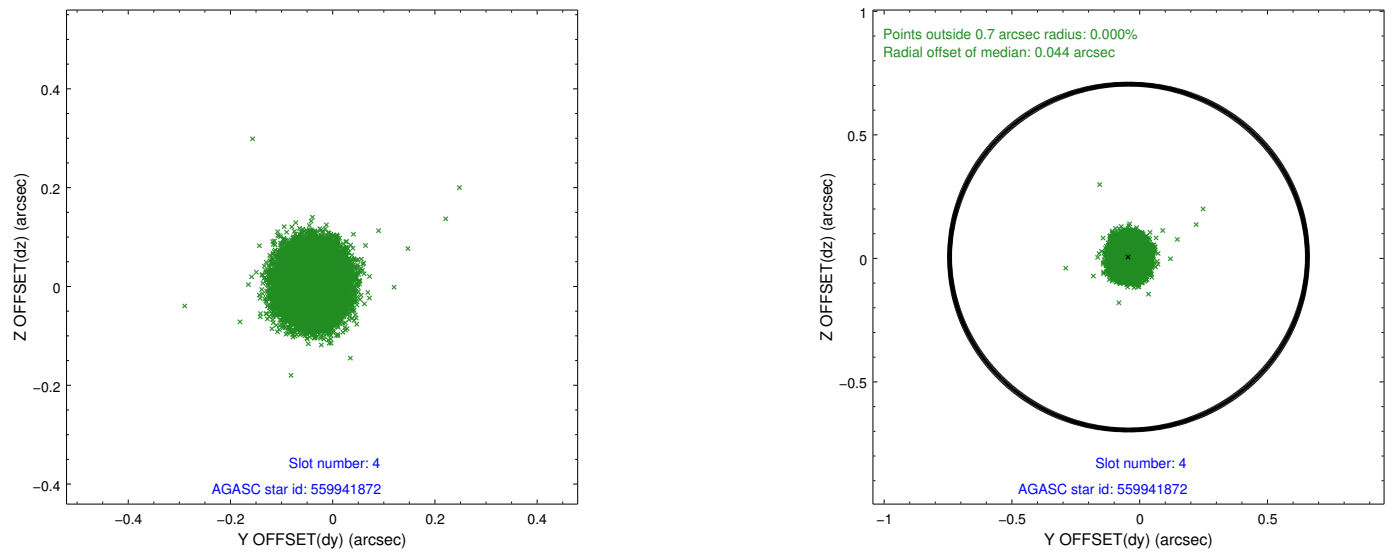
slot	status	id	mag	n_pts	med_dy	med_dz	dr1	dr2	ra	dec	mean_y	mean_z
0	FID	ACIS-S-2	7.11	12243	-0.032	0.002	0.009	0.016	0.000000	0.000000	-755.10	-1726.12
1	FID	ACIS-S-4	7.21	12240	-0.020	0.015	0.010	0.022	0.000000	0.000000	2158.18	182.44
2	FID	ACIS-S-5	7.24	12240	0.020	-0.008	0.008	0.016	0.000000	0.000000	-1807.94	176.00
3	GUIDE	560464080	7.13	24483	0.014	0.076	0.066	0.110	338.477679	65.831661	-2338.18	2028.87
4	GUIDE	559941872	7.72	24485	-0.044	0.005	0.051	0.081	336.770906	65.466155	180.49	685.12
5	GUIDE	559942656	8.33	24484	-0.036	0.114	0.072	0.113	335.233249	65.304591	1924.07	-931.77
6	GUIDE	559942208	8.41	24478	0.068	-0.087	0.057	0.093	336.508890	65.529699	206.54	232.46
7	GUIDE	560470128	8.98	24478	-0.005	-0.106	0.064	0.103	335.961670	65.853657	-325.18	-1084.75

## 2.4 Star Slots

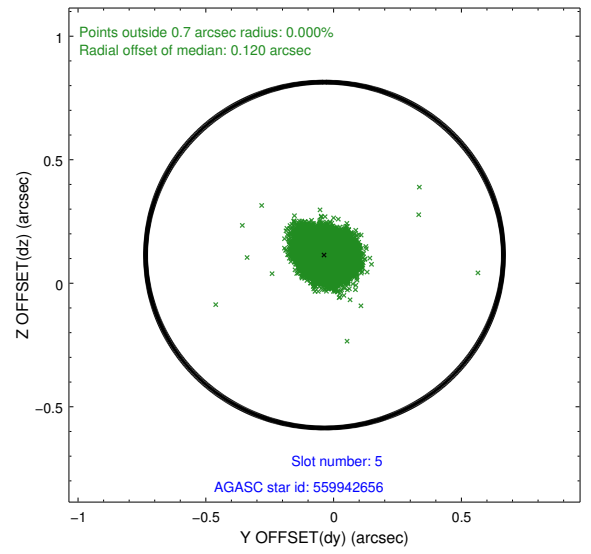
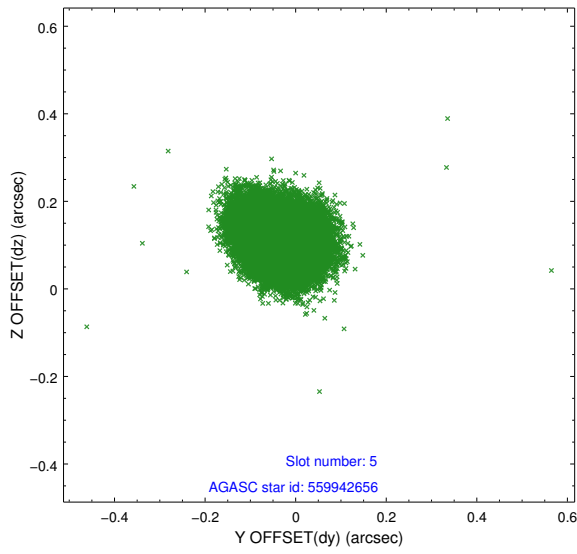
### 2.4.1 Slot 3



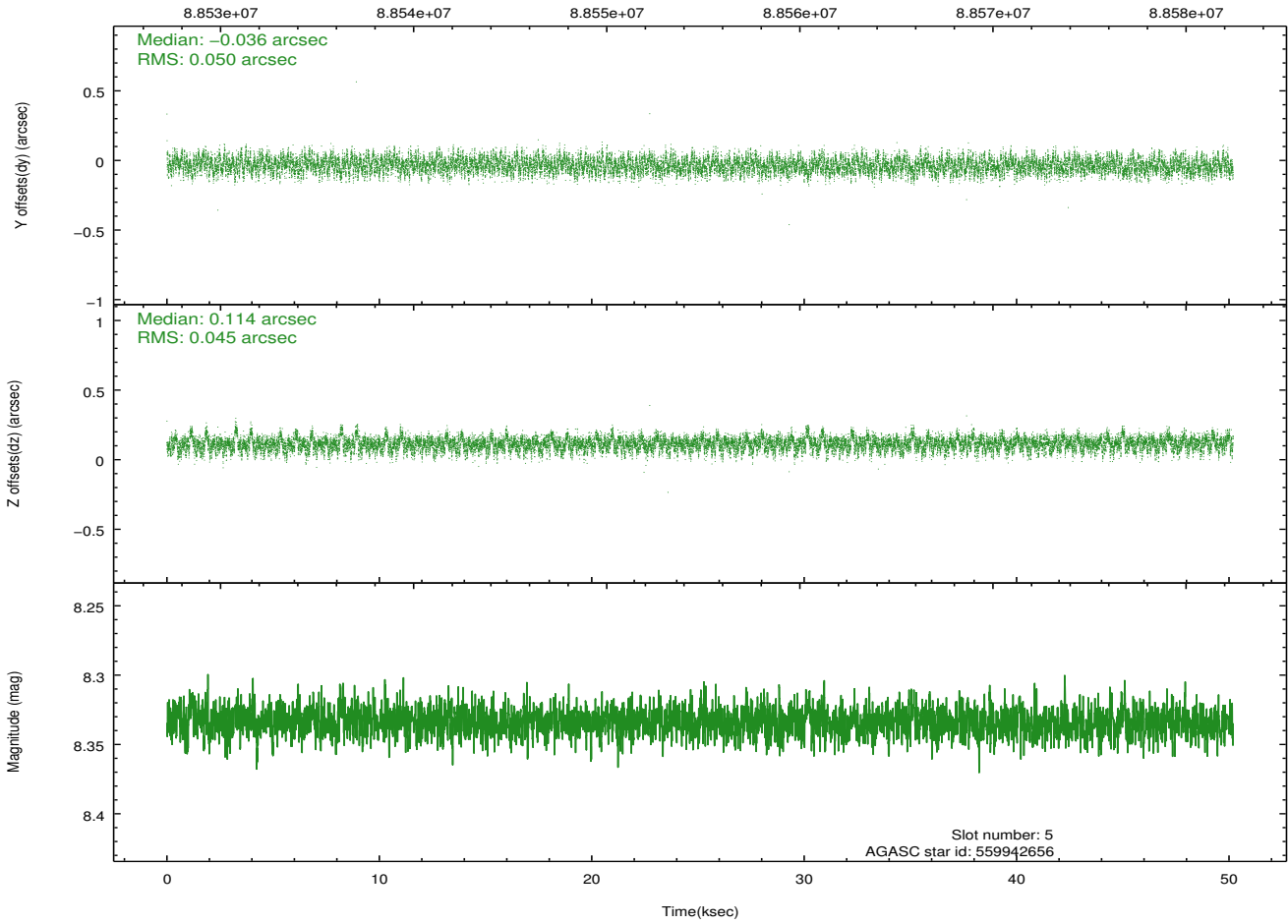
## 2.4.2 Slot 4



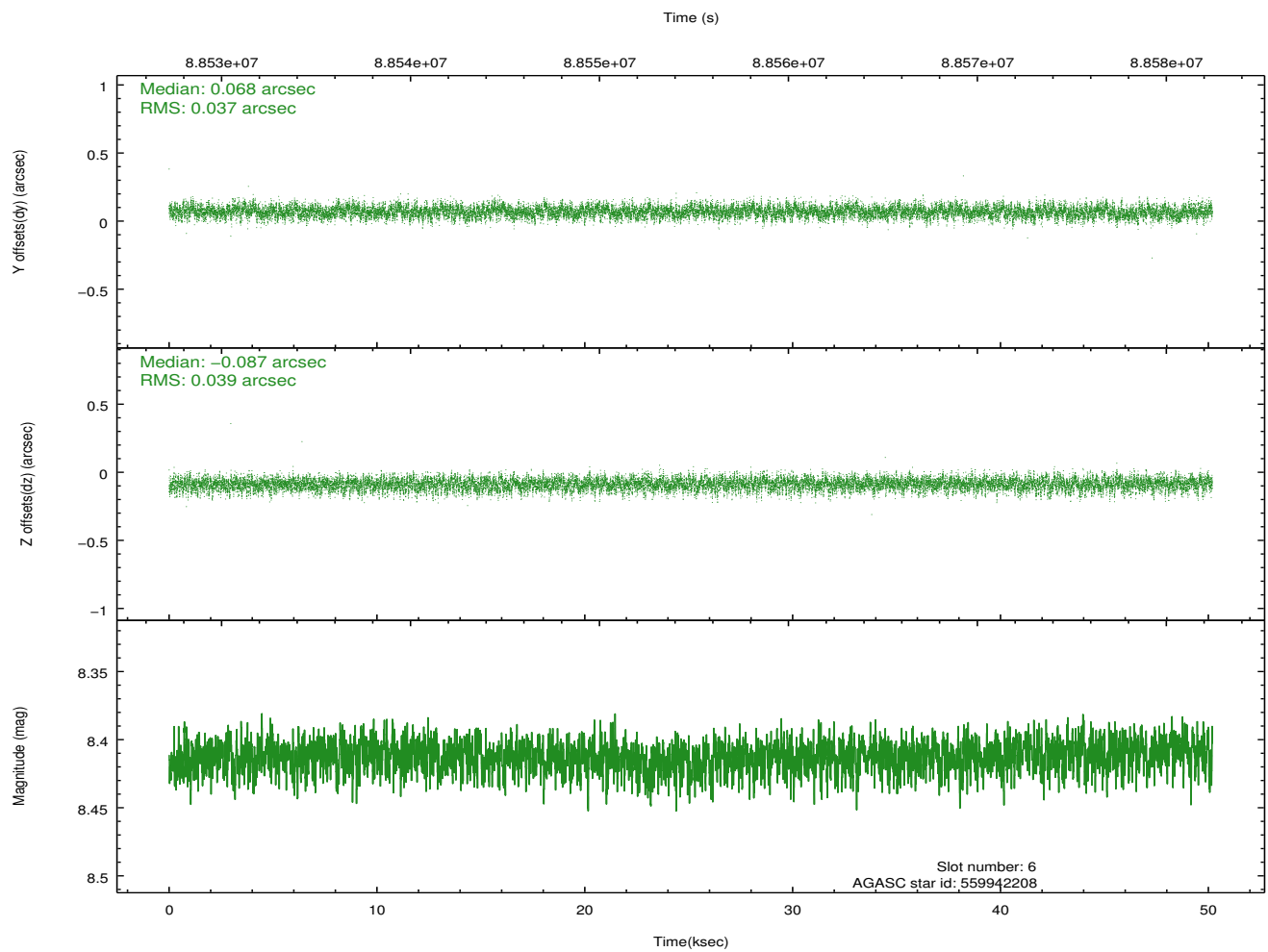
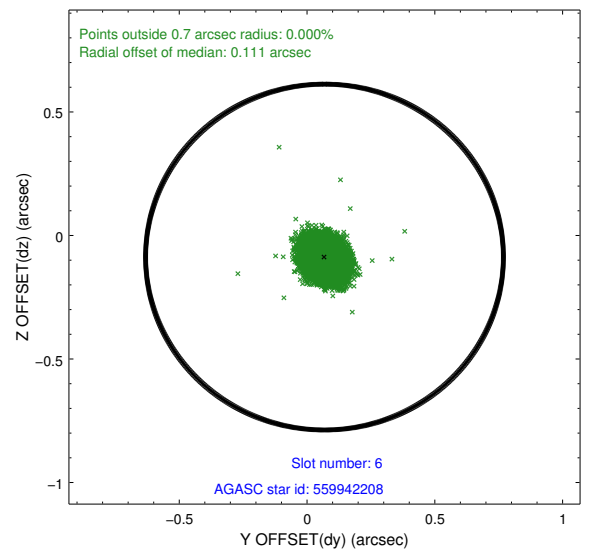
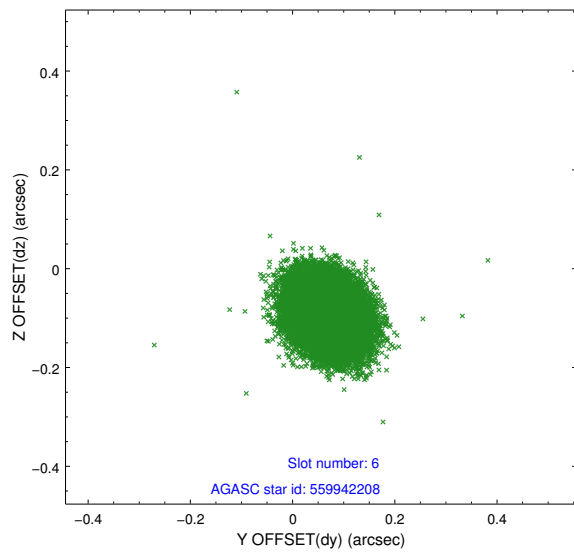
### 2.4.3 Slot 5



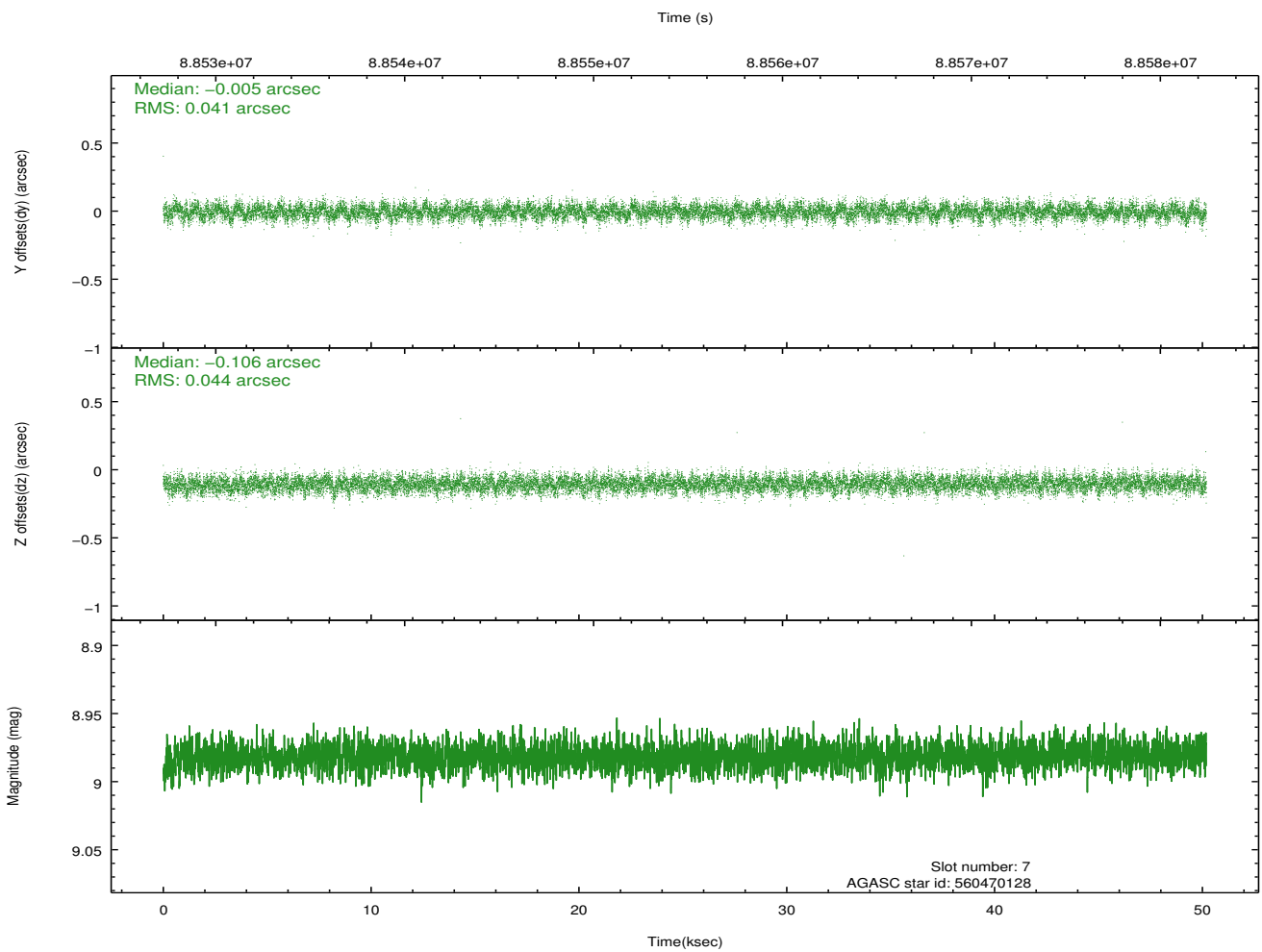
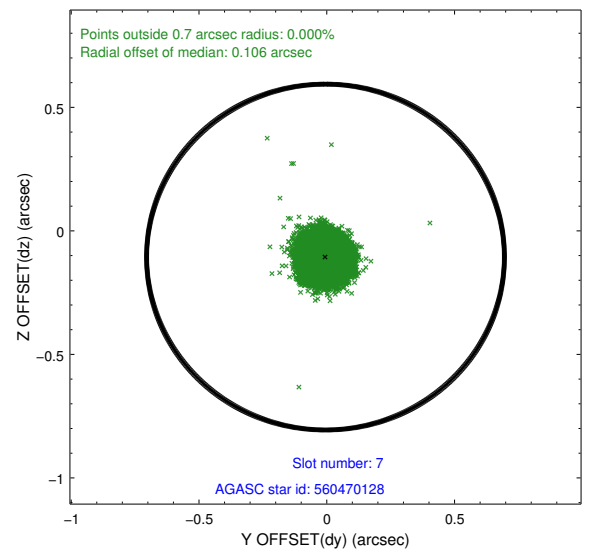
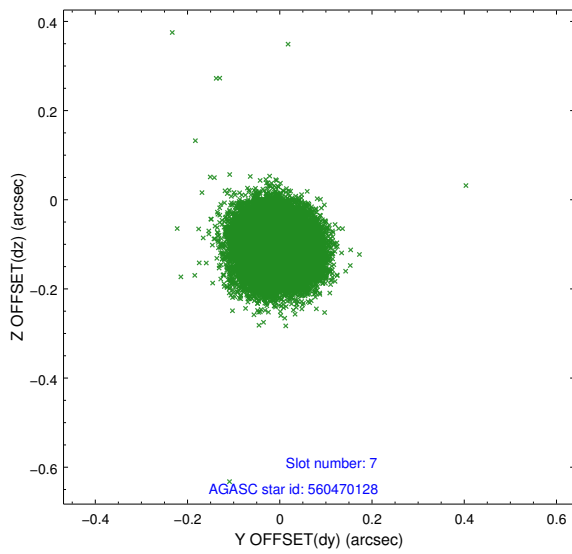
Time (s)



## 2.4.4 Slot 6

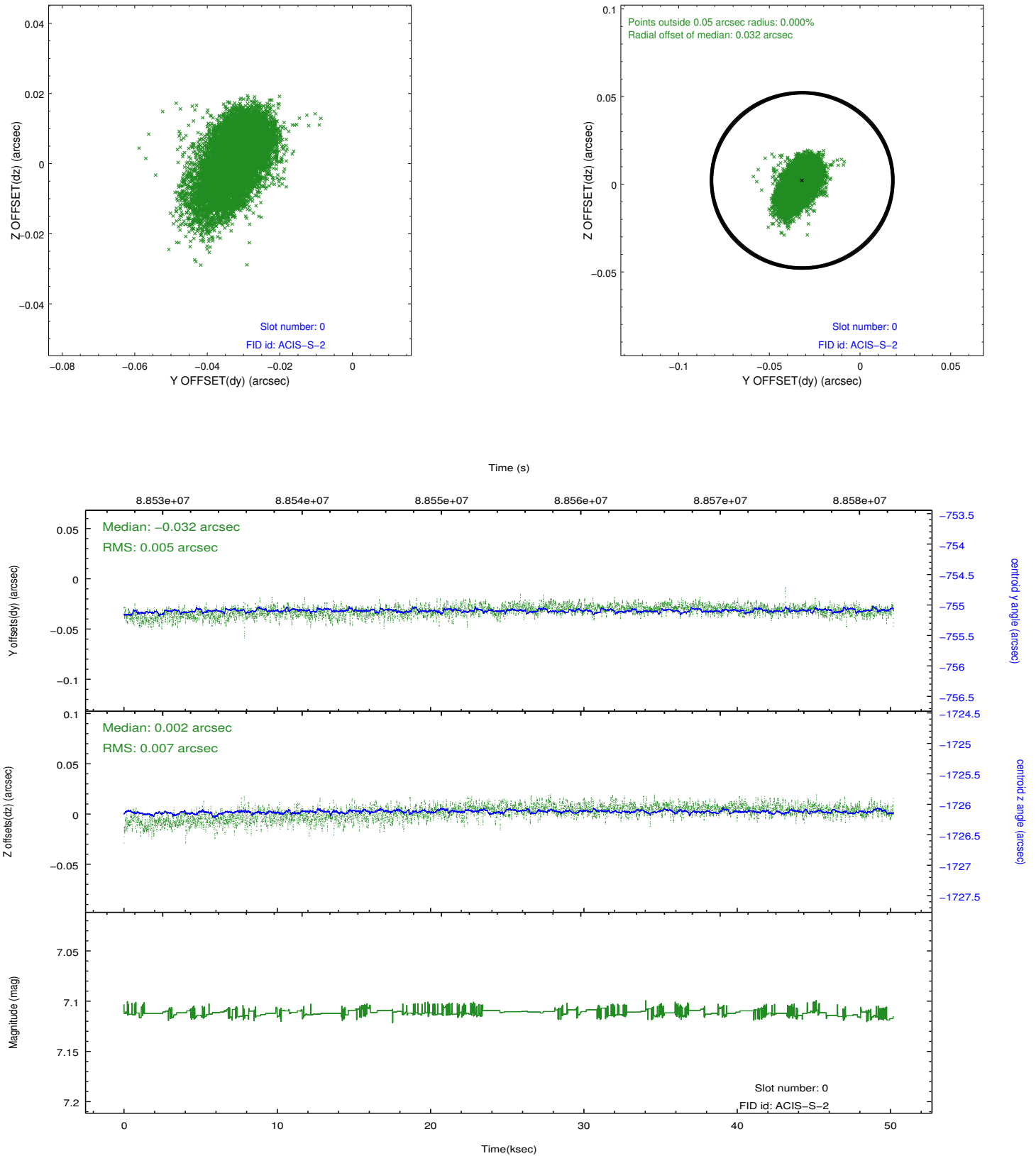


## 2.4.5 Slot 7

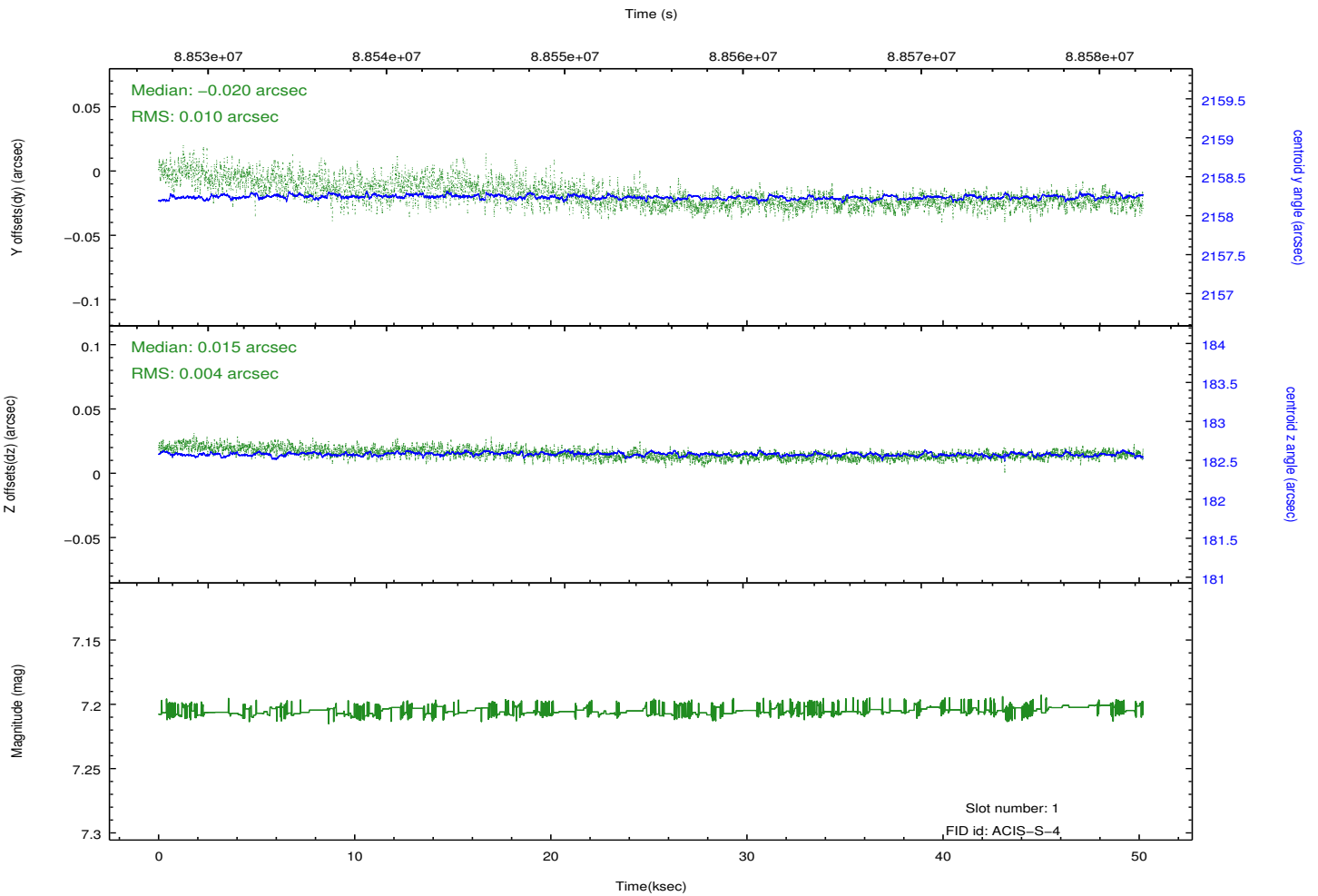
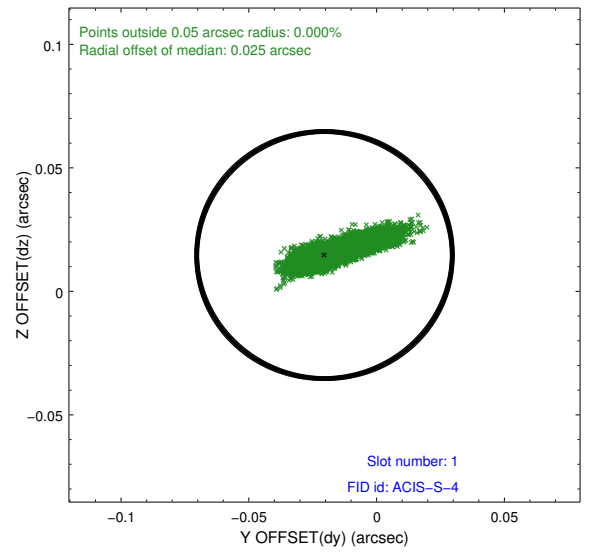
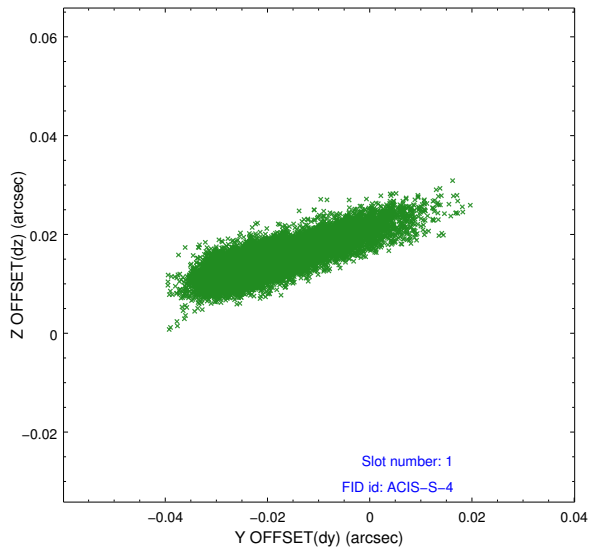


## 2.5 FID Slots

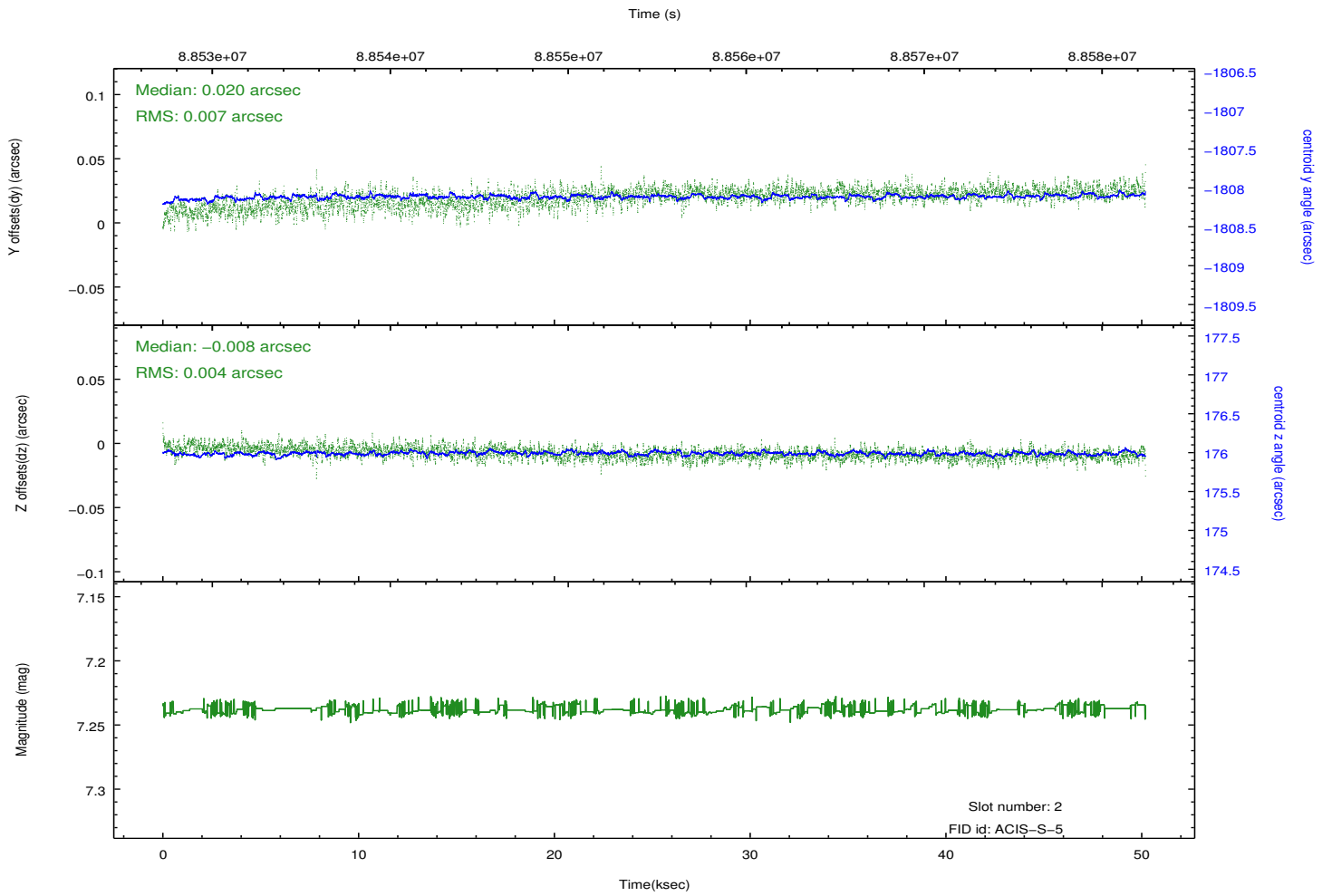
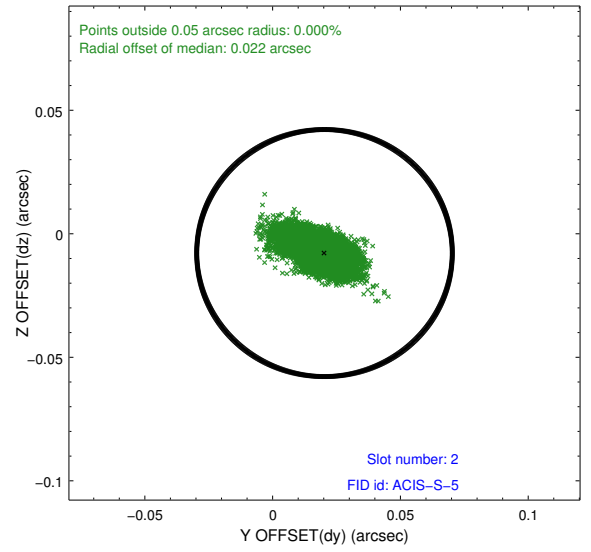
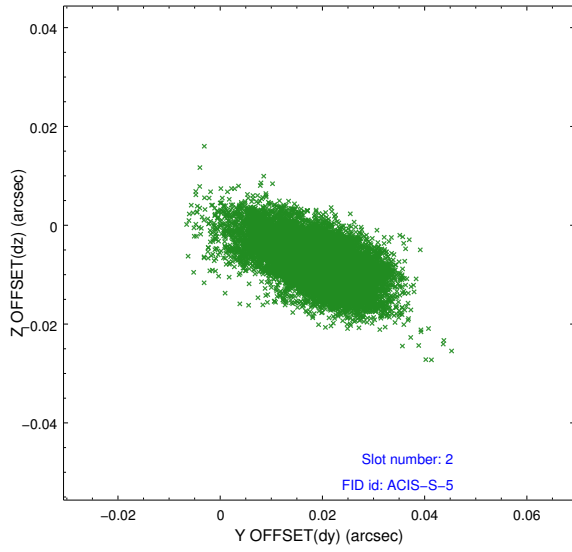
### 2.5.1 Slot 0



## 2.5.2 Slot 1



### 2.5.3 Slot 2



# A Summary

## A.1 Status

V&V Scientist	Beth Sundheim
V&V Date (YYYY-MM-DD)	2012.09.10
V&V Edition	1
V&V Disposition and Status	OK
V&V Charge Time	49.75

## A.2 Comments