

V&V Reference Report

L2 ASCDS Version : 8.4.4

Observation 7585 - L2 Version 3
Chandra X-Ray Center

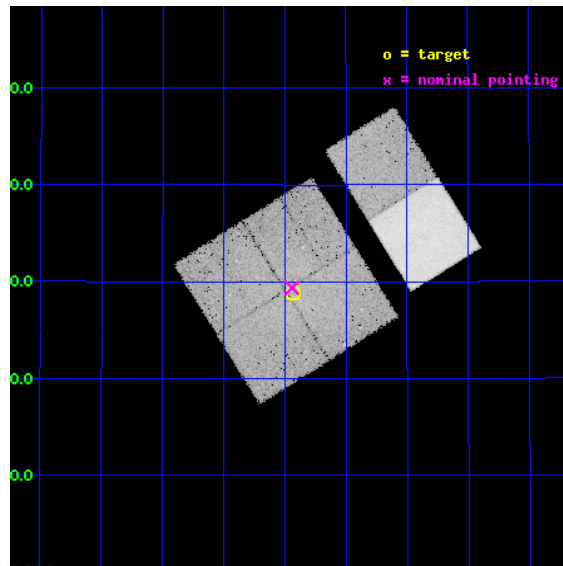
L2 Processing Date : Apr 21 2012

Contents

1	Front	2
2	OBI	3
2.1	OBI	3
2.1.1	Images	3
2.1.2	Bias	3
2.1.3	Parameters	4
2.1.4	Events	4
2.2	Compared Parameters	5
2.3	Aspect	6
2.4	Star Slots	9
2.4.1	Slot 3	9
2.4.2	Slot 4	10
2.4.3	Slot 5	11
2.4.4	Slot 6	12
2.4.5	Slot 7	13
2.5	FID Slots	14
2.5.1	Slot 0	14
2.5.2	Slot 1	15
2.5.3	Slot 2	16
A	Summary	17
A.1	Status	17
A.2	Comments	17

1 Front

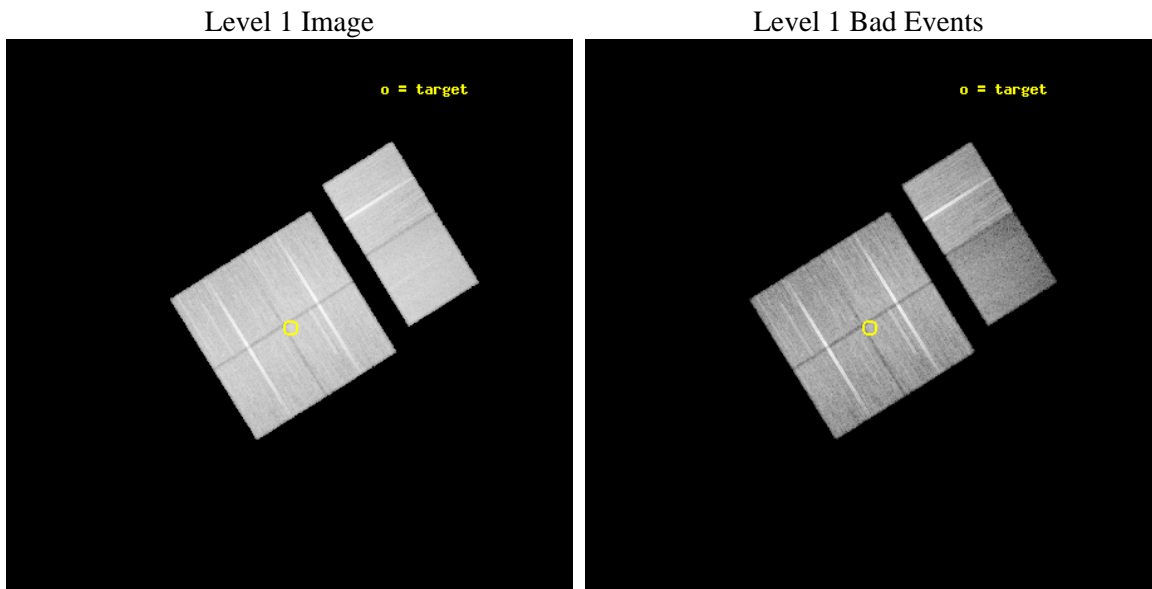
seq_num	500717	Sequence number
obs_id	7585	Observation id
title	Exploring the center-filled SNR G67.7+1.8	Proposal title
observer	Dr. Peter Predehl	Principal investigator
object	G67.7+1.8	Source name
dtcycle	0	
cycle	P	events from which exps? Prim/Second/Both
ra_targ	298.608333	Observer's specified target RA [deg]
dec_targ	31.481667	Observer's specified target Dec [deg]
ra_nom	298.61075929688	Nominal RA [deg]
dec_nom	31.489498042019	Nominal Dec [deg]
roll_nom	58.027538237826	Nominal Roll [deg]
revision	3	Processing version of data
ontime	29461.170774758	Sum of GTIs [s]
livetime	29088.115691021	Livetime [s]
ontime0	29464.288605154	Sum of GTIs [s]
ontime1	29464.329615235	Sum of GTIs [s]
ontime2	29457.888874054	Sum of GTIs [s]
ontime3	29461.170774758	Sum of GTIs [s]
ontime6	29464.49385494	Sum of GTIs [s]
ontime7	29467.693755329	Sum of GTIs [s]
l2events	216404	Number of level 2 events



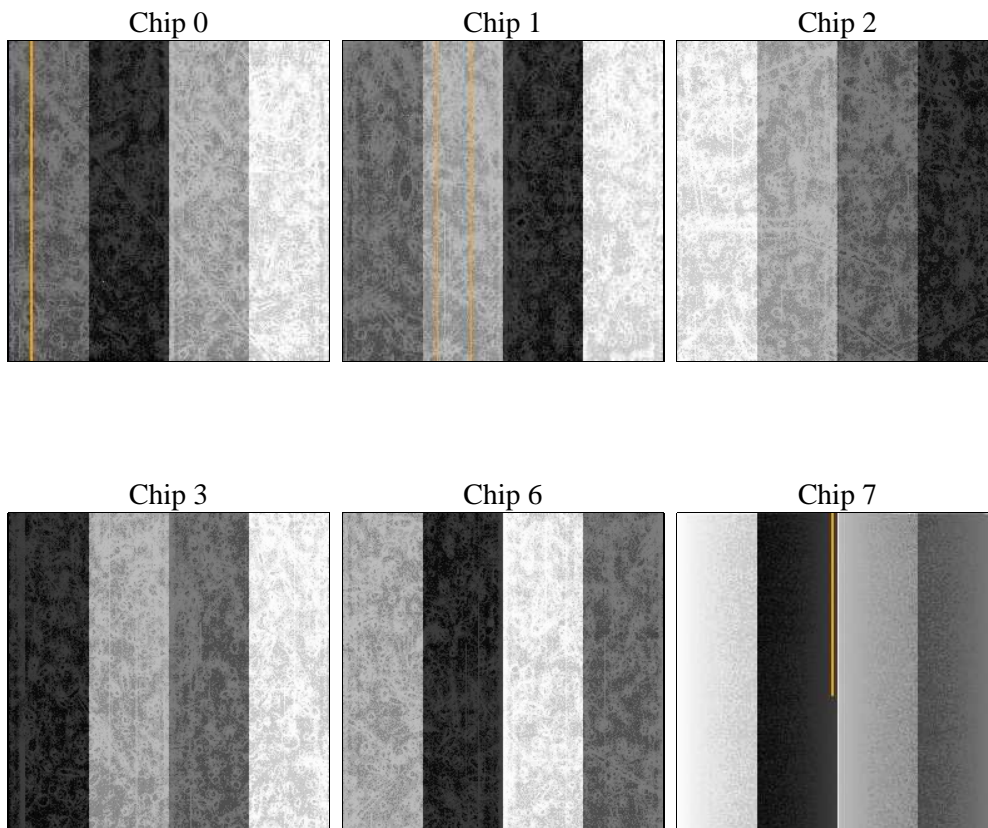
2 OBI

2.1 OBI

2.1.1 Images



2.1.2 Bias



2.1.3 Parameters

obi_num	0	Obi number	sched_exp_time	29411.500000	[s] Scheduled observation exposure time
ascdsver	8.4.4	Processing system revision	ontime	29461.170774758	Sum of GTIs [s]
caldsver	4.4.9	 	ontime0	29464.288605154	Sum of GTIs [s]
date	2012-04-21T01:42:08	Date and time of file creation	ontime1	29464.329615235	Sum of GTIs [s]
revision	3	Processing version of data	ontime2	29457.888874054	Sum of GTIs [s]
			ontime3	29461.170774758	Sum of GTIs [s]
			ontime6	29464.49385494	Sum of GTIs [s]
			ontime7	29467.693755329	Sum of GTIs [s]
			l1events	1291624	Number of level 1 events

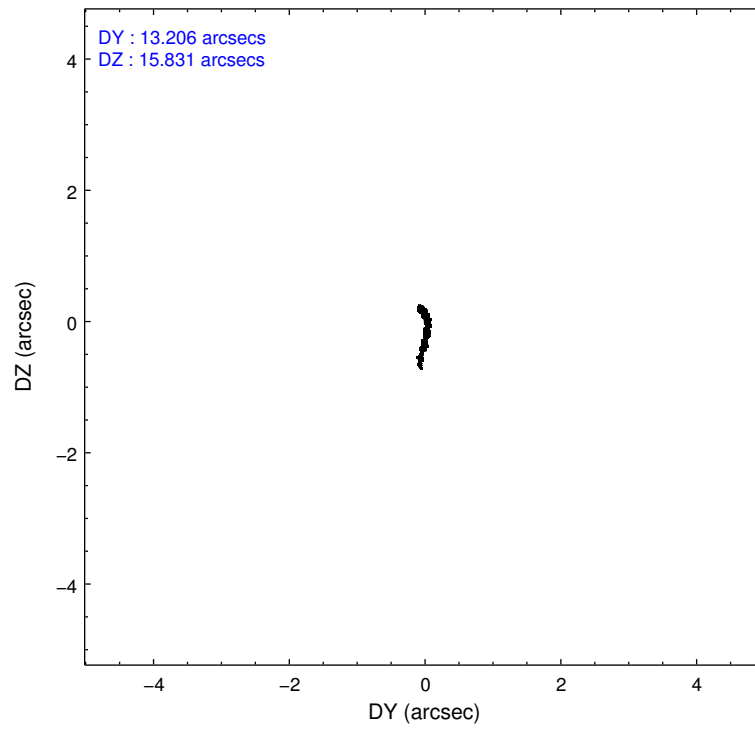
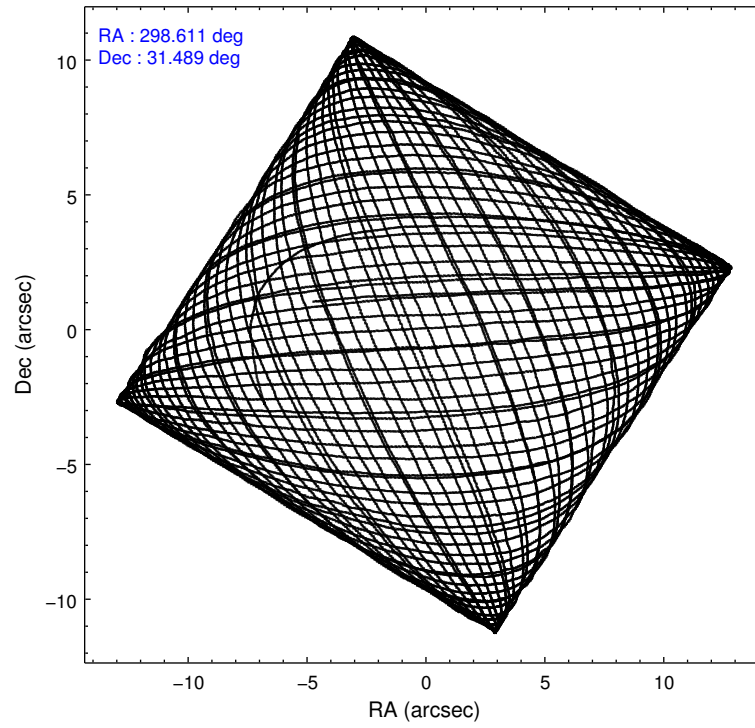
2.1.4 Events

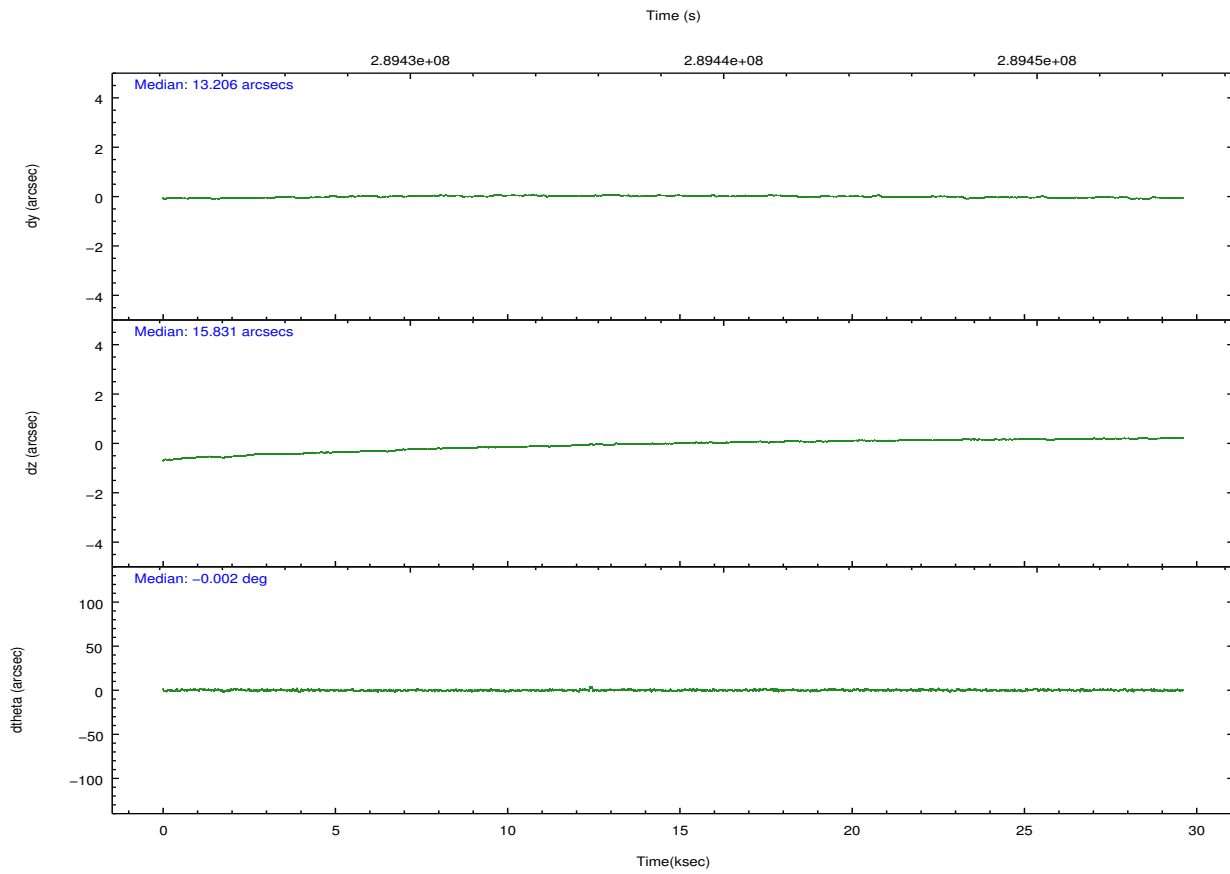
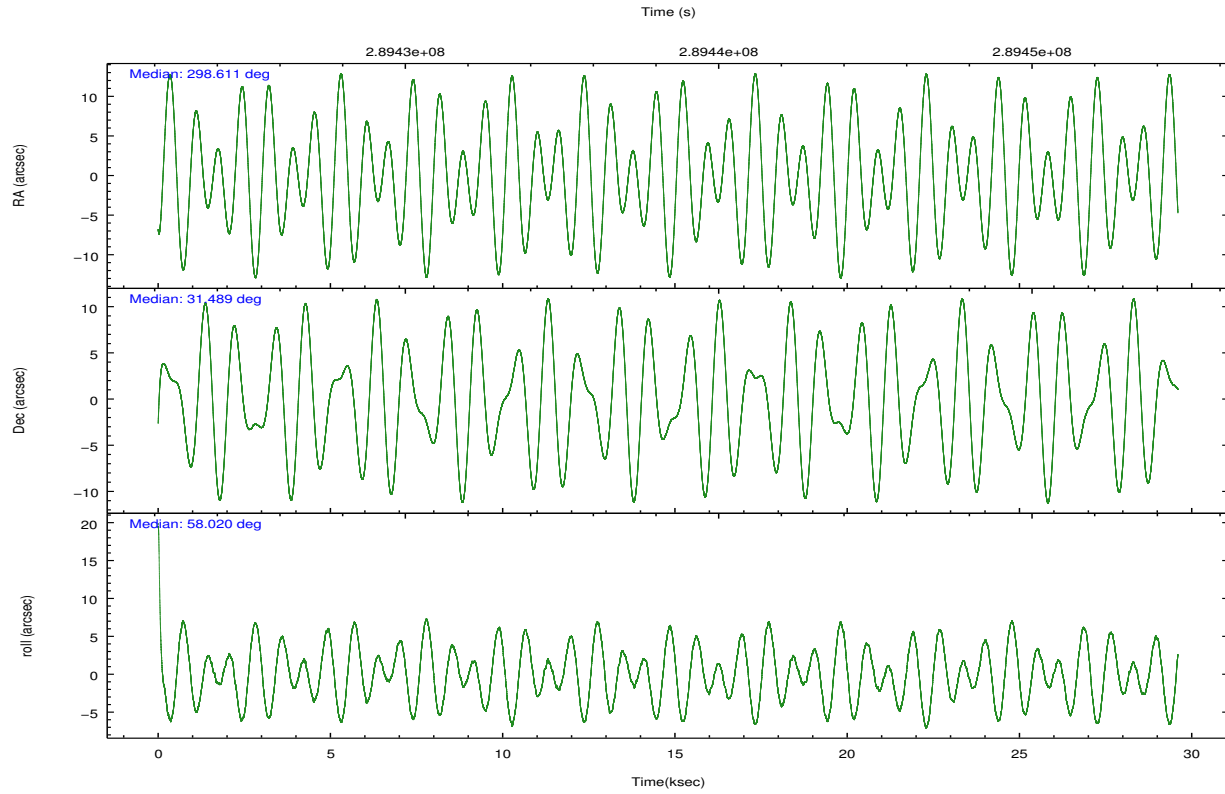
	ccd 0	ccd 1	ccd 2	ccd 3	ccd 6	ccd 7		ccd 0	ccd 1	ccd 2	ccd 3	ccd 6	ccd 7
level 1 events	208774	201557	228820	215290	225085	212098	grade 0 events	11639	11064	11450	12078	11118	11485
rejected events	182573	175054	203475	189393	198682	102485		5%	5%	5%	5%	4%	5%
rejected %	87%	86%	88%	87%	88%	48%	grade 1 events	131	115	139	138	115	288
								0%	0%	0%	0%	0%	0%
							grade 2 events	5552	5371	5381	4941	5363	22832
								2%	2%	2%	2%	2%	10%
							grade 3 events	2564	2632	2310	2425	2558	10306
								1%	1%	1%	1%	1%	4%
							grade 4 events	2392	2649	2370	2402	2635	10182
								1%	1%	1%	1%	1%	4%
							grade 5 events	6258	6939	5738	7215	7500	21857
								2%	3%	2%	3%	3%	10%
							grade 6 events	4062	4795	3843	4063	4742	54845
								1%	2%	1%	1%	2%	25%
							grade 7 events	176176	167992	197589	182028	191054	80303
								84%	83%	86%	84%	84%	37%

2.2 Compared Parameters

Parameter	Planned	Actual	Parameter	Planned	Actual
Instrument	ACIS	ACIS	Obspar format version number	7	7
Detector	ACIS-012367	ACIS-012367	Obspar file type	PREDICTED	ACTUAL
Grating	NONE	NONE	Obspar update status	NONE	UPDATED
Data mode	VFAINT	VFAINT	CCD I0 on	Y	Y
Observation mode	POINTING	POINTING	CCD I1 on	Y	Y
[deg] Pointing RA	298.609752	298.6107592968848	CCD I2 on	Y	Y
[deg] Pointing Dec	31.462003	31.48949804201937	CCD I3 on	Y	Y
[deg] Pointing Roll	57.819373	58.02753823782561	CCD S0 on	N	N
[mm] SIM focus pos	-0.782348	-0.7809083437167272	CCD S1 on	N	N
[mm] SIM defocus	0	0.001439871863259334	CCD S2 on	O1	Y
[mm] SIM translation stage pos	-233.592463	-233.5874344608287	CCD S3 on	O2	Y
[mm] SIM translation stage offset	0	-0.005018542100998502	CCD S4 on	N	N
[s] Observation start time (MET)	289423772.184000	289422758.61255	CCD S5 on	N	N
Observation start date	2007-03-04T19:28:27	2007-03-04T19:12:38	Number of optional ACIS chips dropped	0	0
[s] Observation end time (MET)	289453183.184000	289453423.539	On-chip summing requested	N	N
Observation end date	2007-03-05T03:38:38	2007-03-05T03:43:43	Subarray requested	NONE	NONE
Read mode	TIMED	TIMED	Alternating exposures requested	N	N
			[s] Primary exposure time	0.000000	3.2

2.3 Aspect



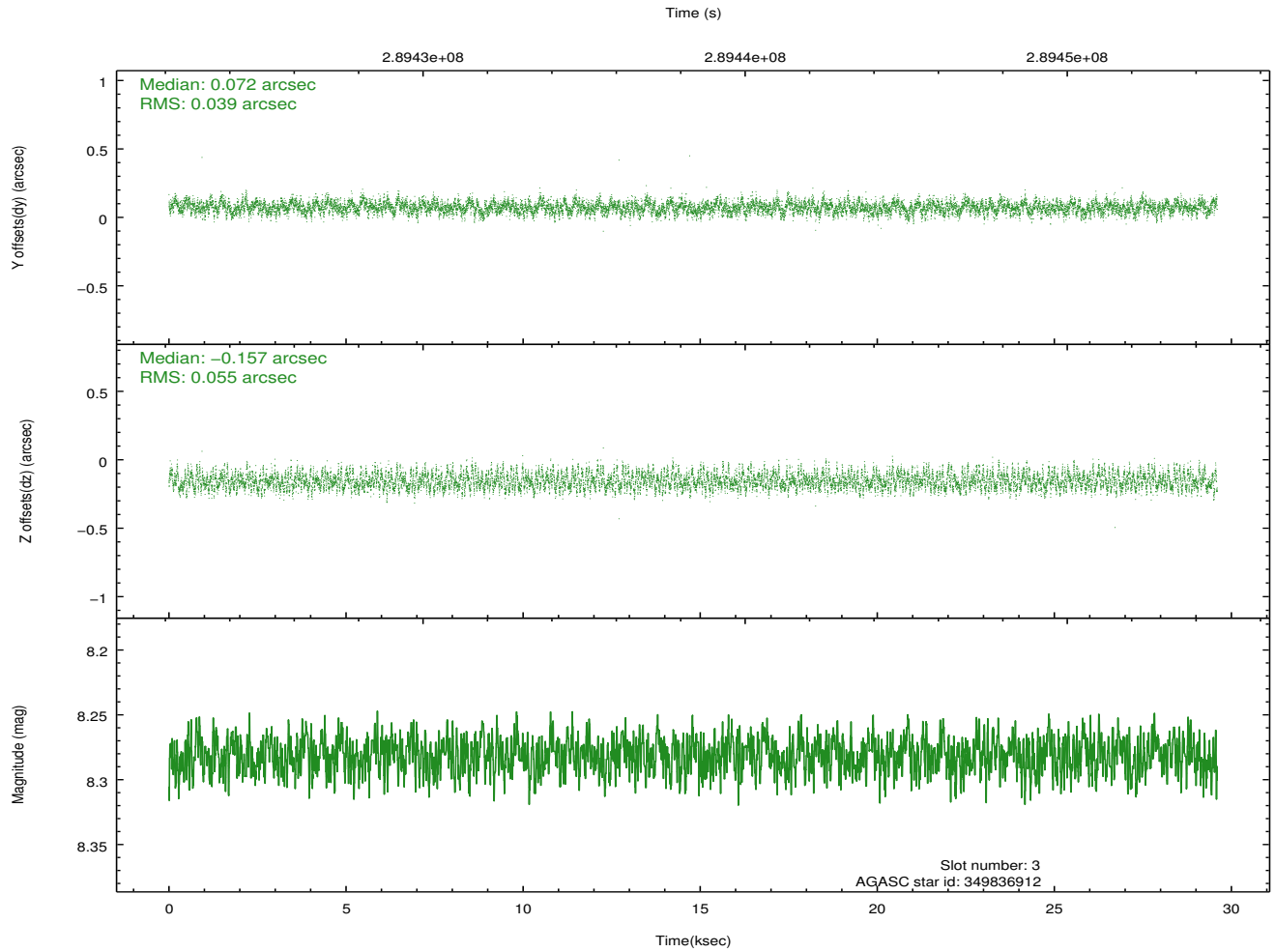
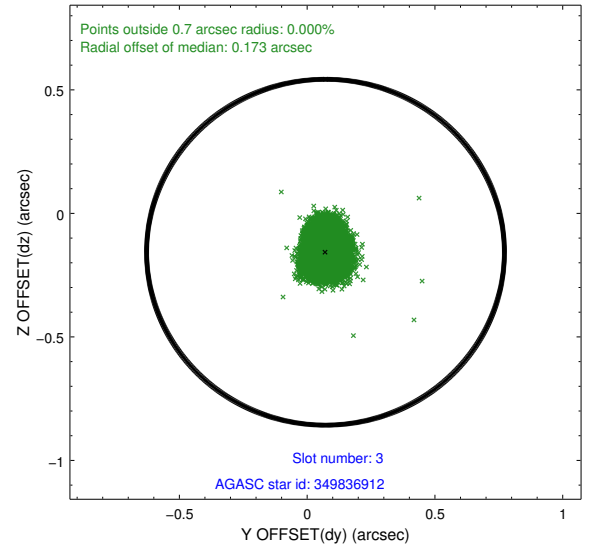
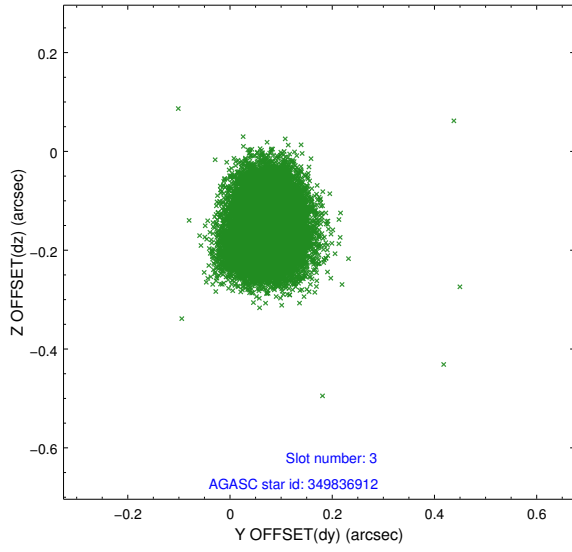


Slot Statistics

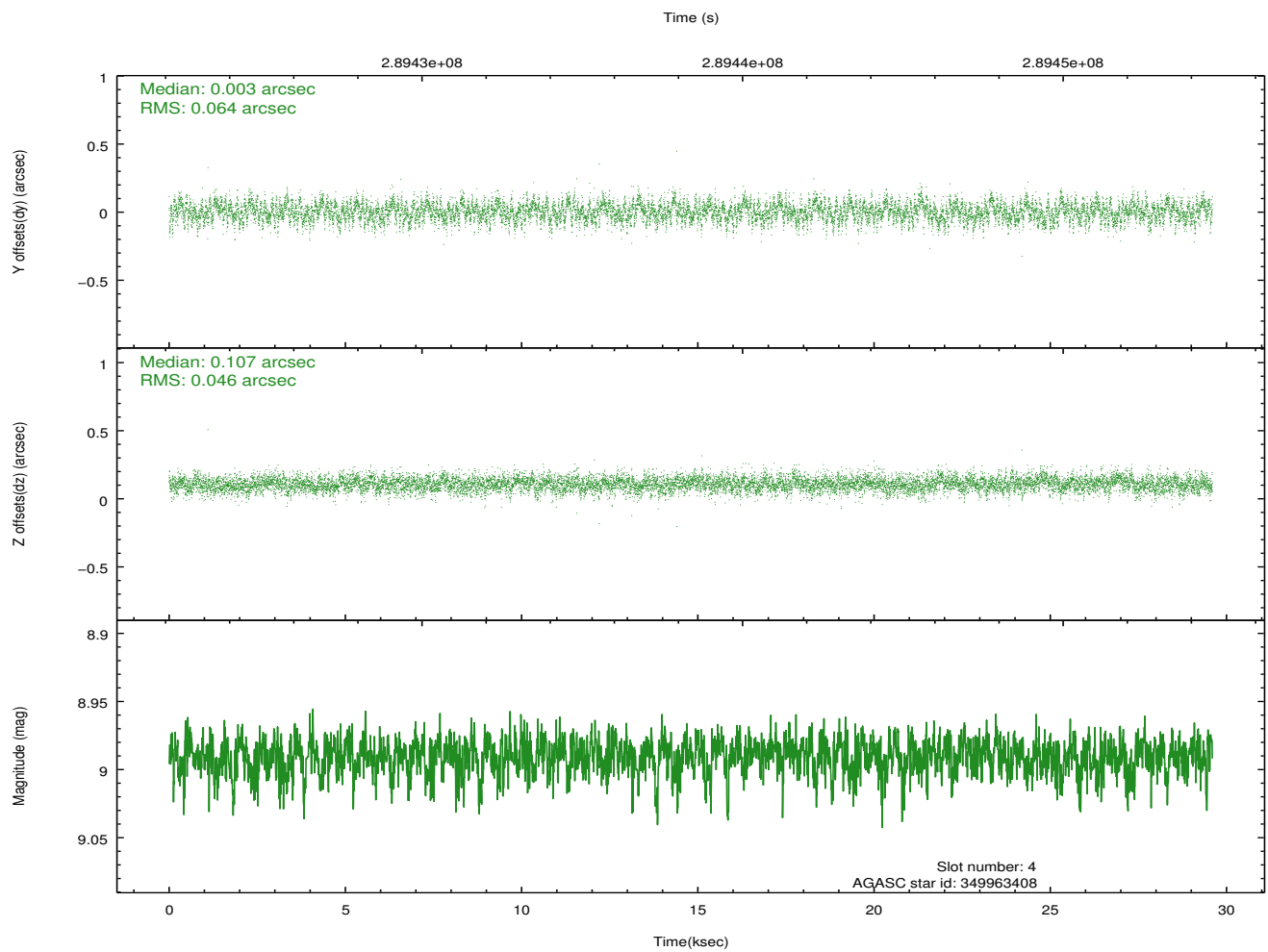
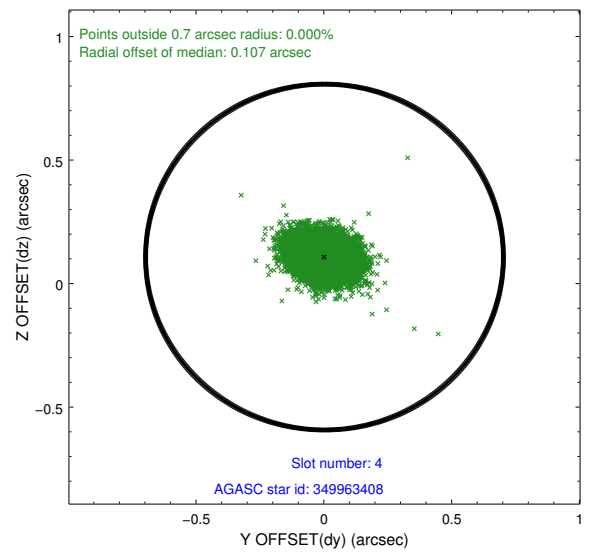
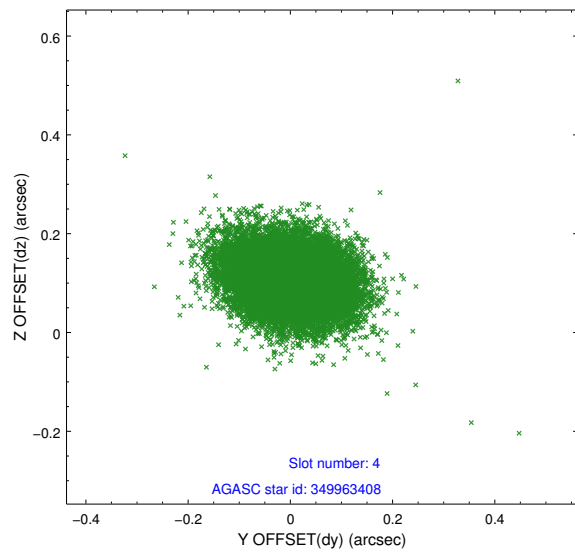
slot	status	id	mag	n_pts	med_dy	med_dz	dr1	dr2	ra	dec	mean_y	mean_z
0	FID	ACIS-I-2	7.15	7216	-0.085	-0.083	0.011	0.020	0.000000	0.000000	-767.96	-845.82
1	FID	ACIS-I-4	7.17	7219	0.220	0.074	0.011	0.018	0.000000	0.000000	2146.39	1060.45
2	FID	ACIS-I-5	7.22	7220	-0.236	0.077	0.011	0.019	0.000000	0.000000	-1821.82	1058.42
3	GUIDE	349836912	8.28	14436	0.072	-0.157	0.072	0.114	298.000867	31.707270	-241.58	2051.32
4	GUIDE	349963408	8.99	14433	0.003	0.107	0.082	0.137	299.534365	31.670641	2155.04	-1990.65
5	GUIDE	350380544	8.71	14430	-0.068	-0.040	0.062	0.102	298.631008	32.076988	1908.54	1124.51
6	GUIDE	349855304	8.05	14438	0.029	-0.071	0.060	0.095	298.096790	31.332327	-1231.96	1088.36
7	GUIDE	349838104	6.90	14438	-0.029	0.158	0.056	0.091	299.173678	30.947241	-636.89	-2457.69

2.4 Star Slots

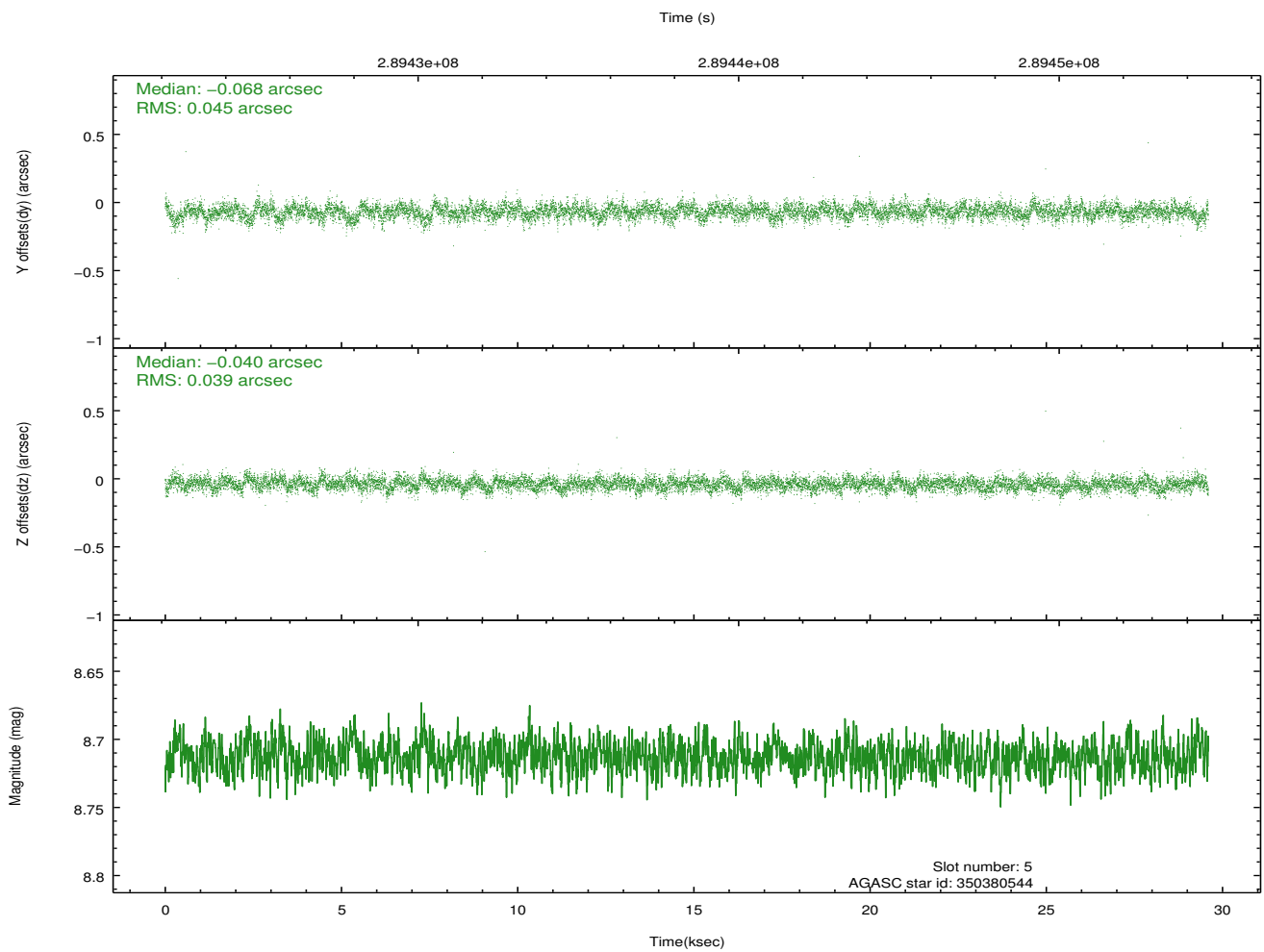
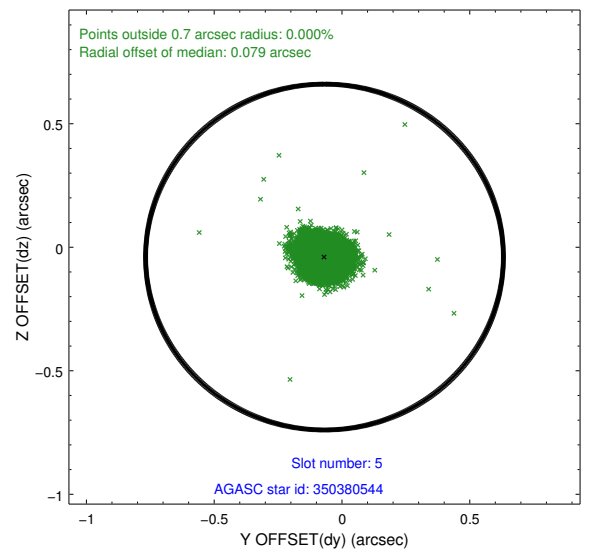
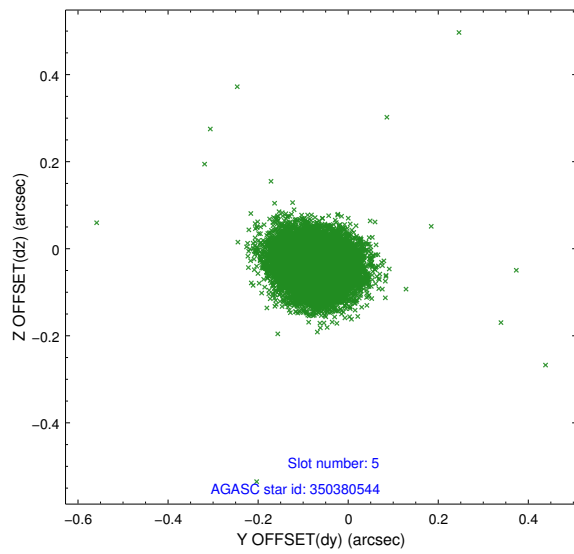
2.4.1 Slot 3



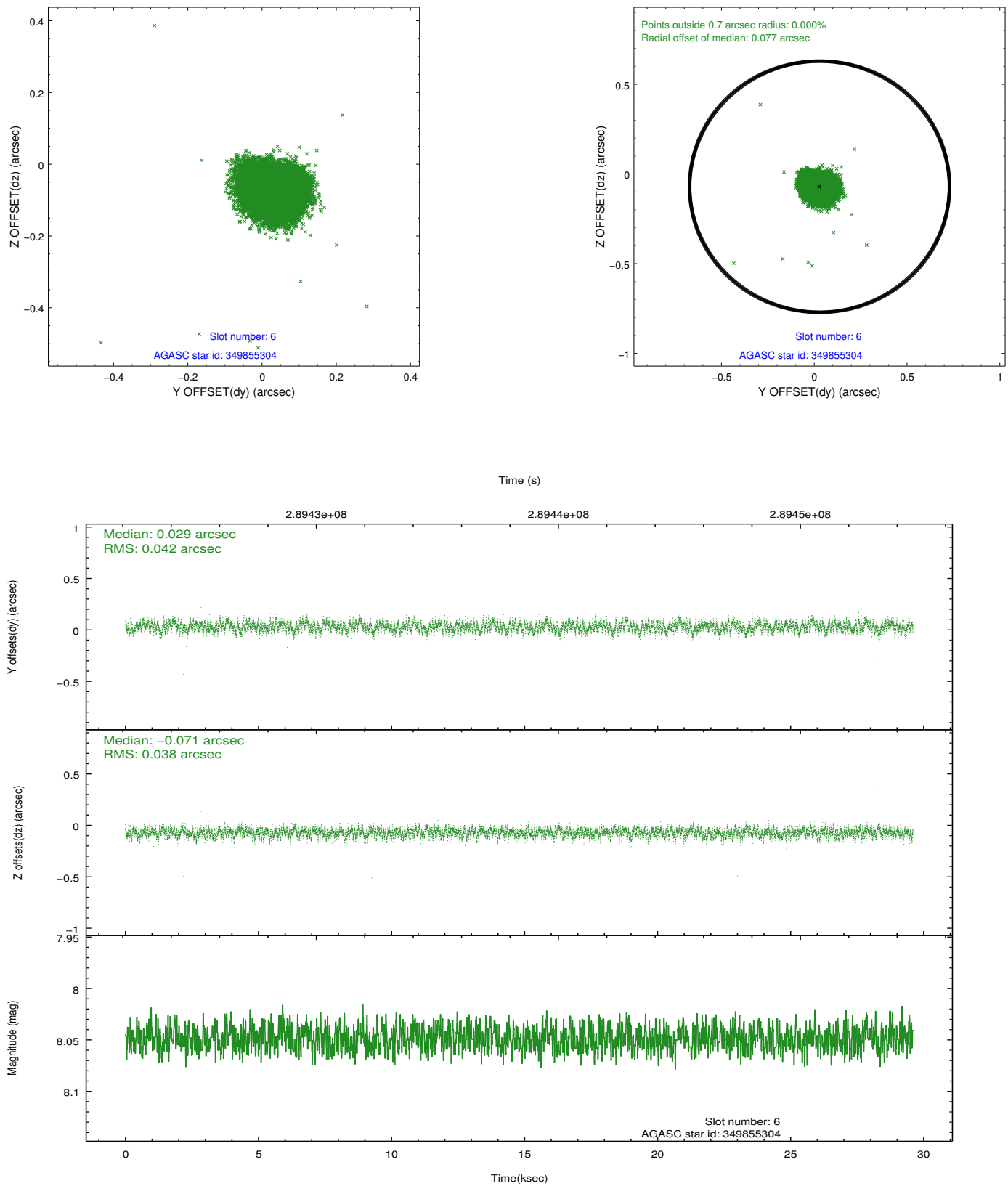
2.4.2 Slot 4



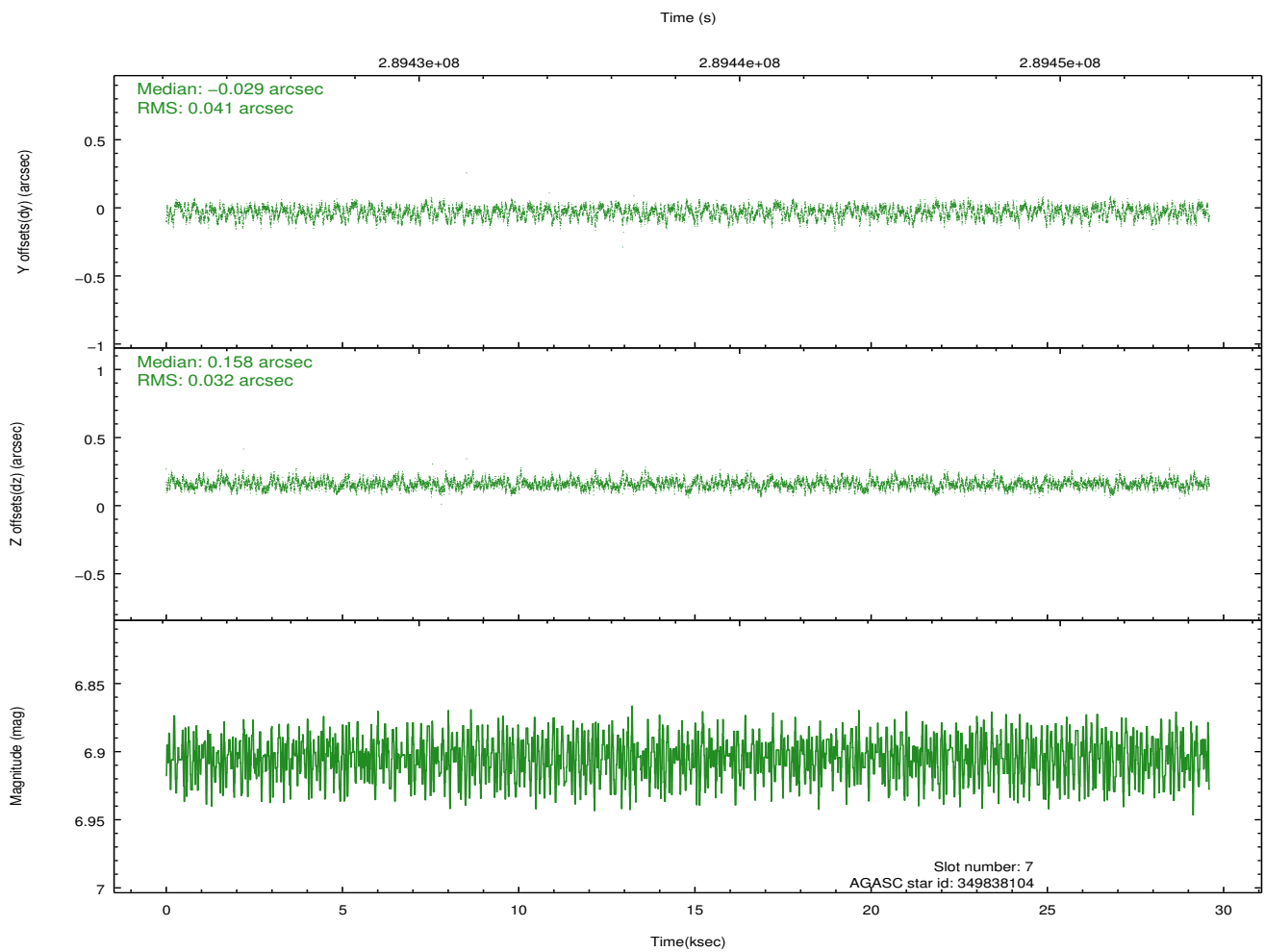
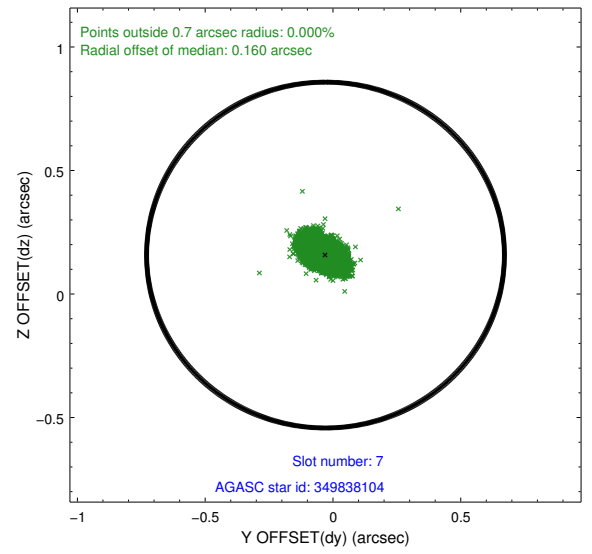
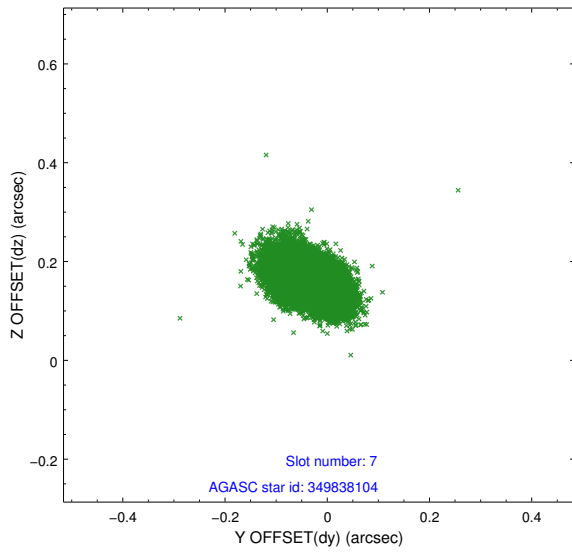
2.4.3 Slot 5



2.4.4 Slot 6

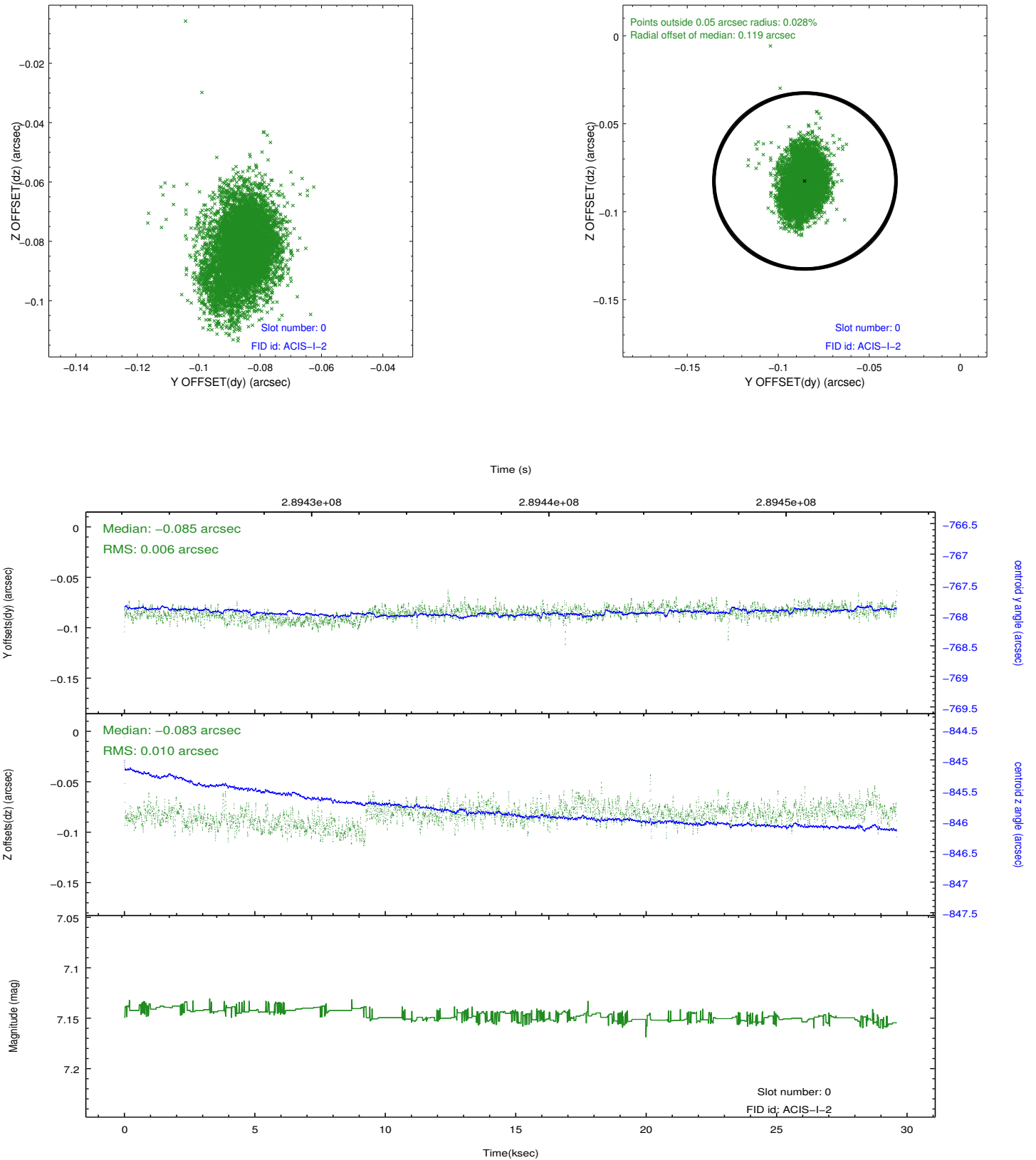


2.4.5 Slot 7

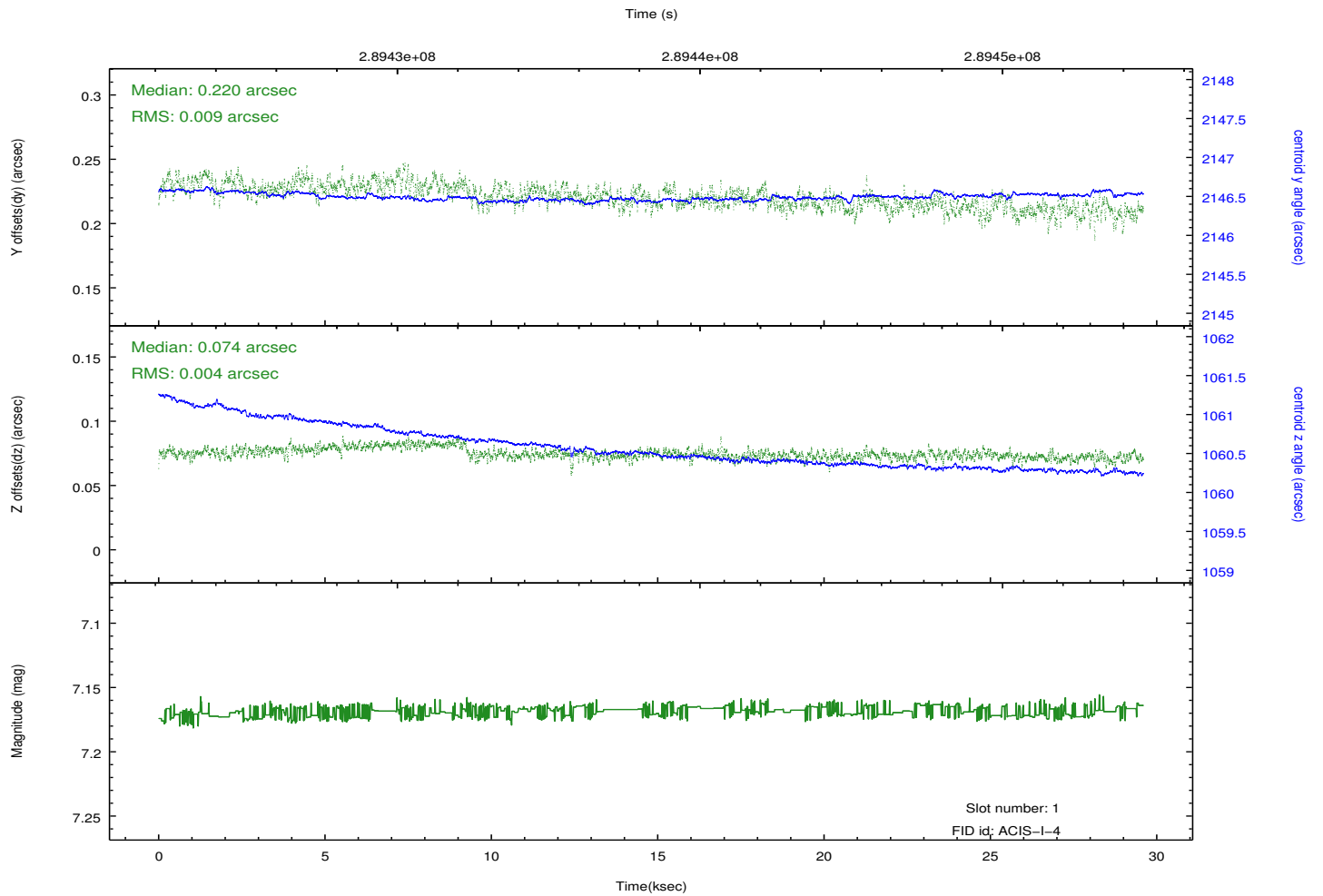
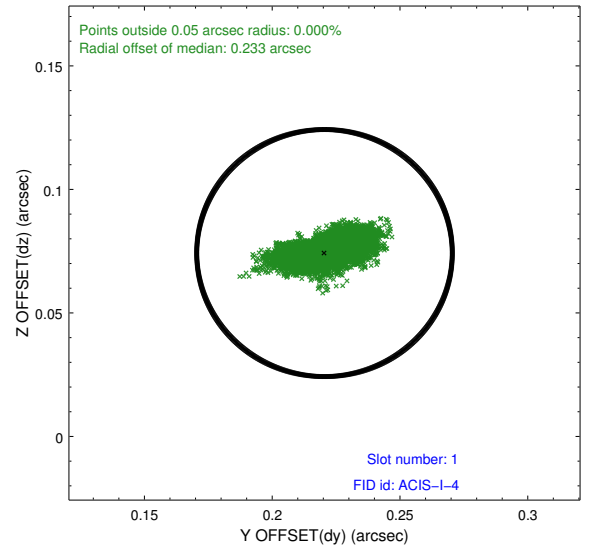
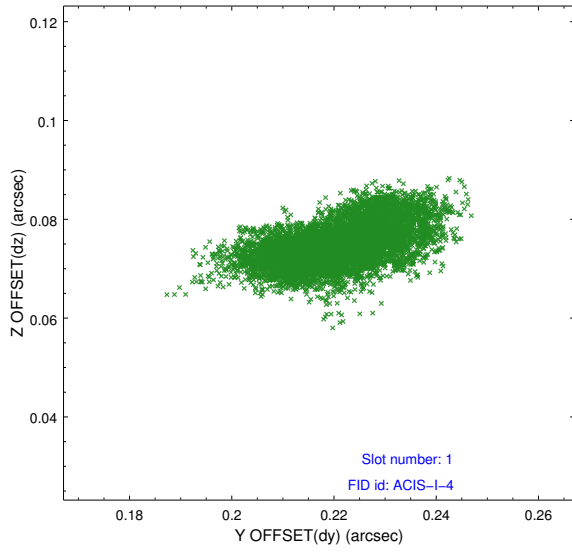


2.5 FID Slots

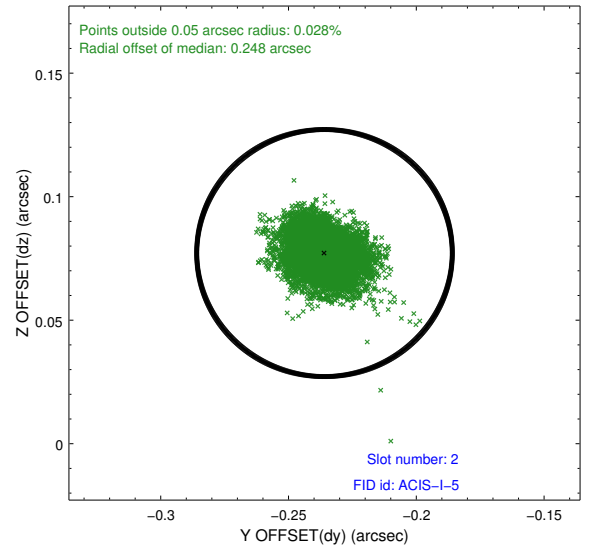
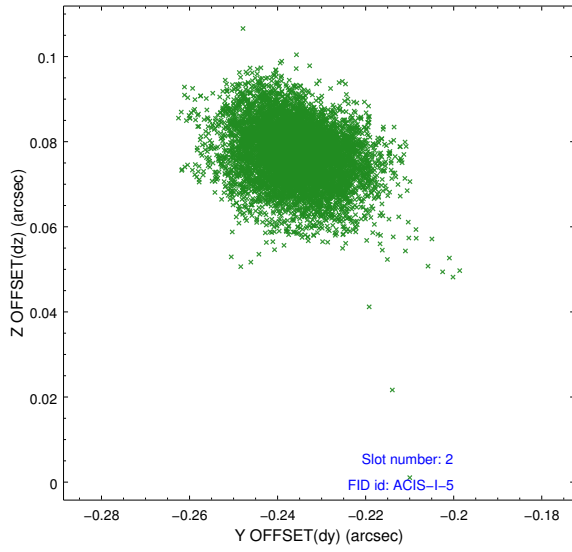
2.5.1 Slot 0



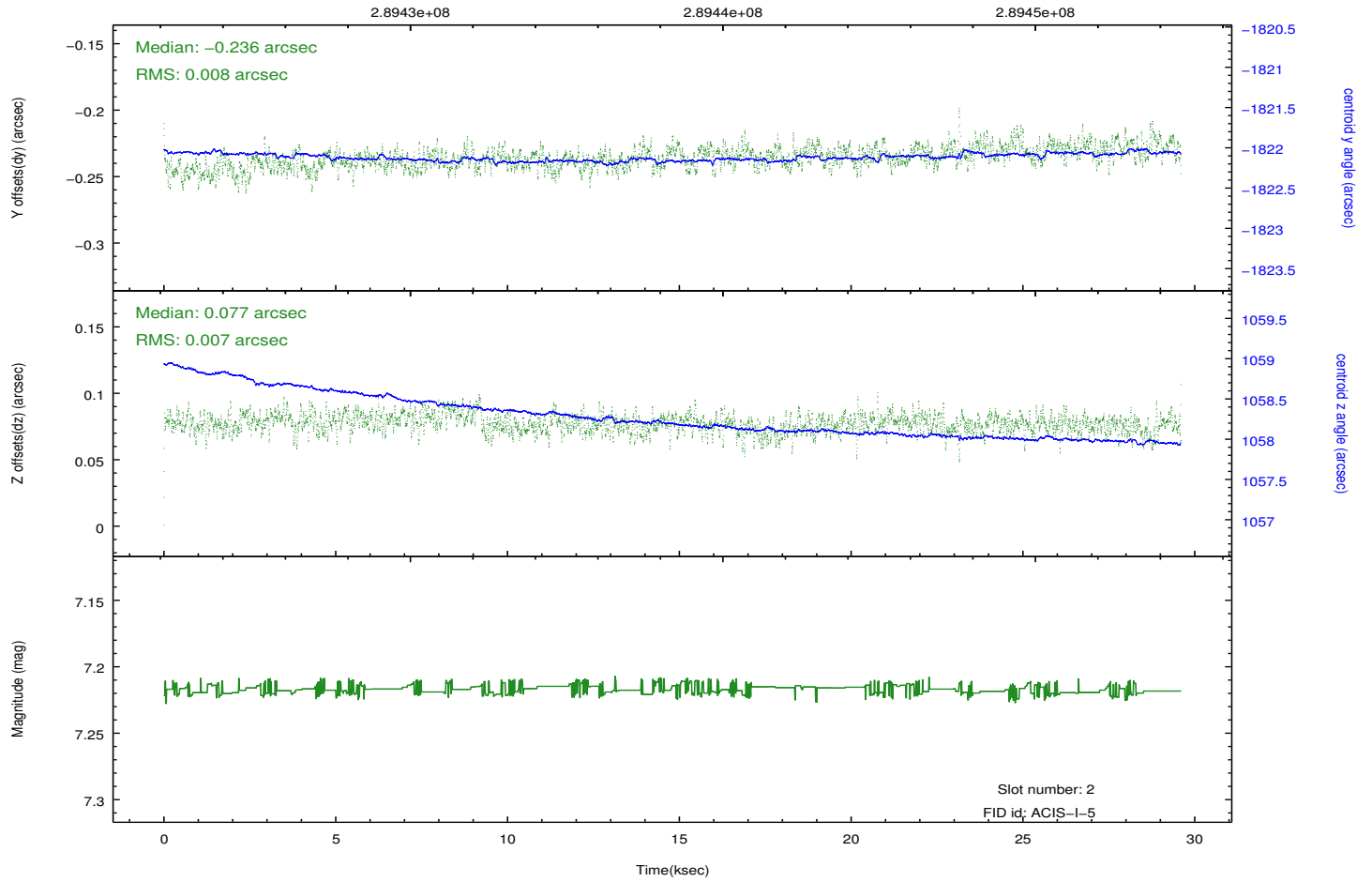
2.5.2 Slot 1



2.5.3 Slot 2



Time (s)



A Summary

A.1 Status

V&V Scientist	Beth Sundheim
V&V Date (YYYY-MM-DD)	2012.04.22
V&V Edition	1
V&V Disposition and Status	OK
V&V Charge Time	29.4623179

A.2 Comments