

V&V Reference Report

L2 ASCDS Version : 8.4.4

Observation 7645 - L2 Version 2
Chandra X-Ray Center

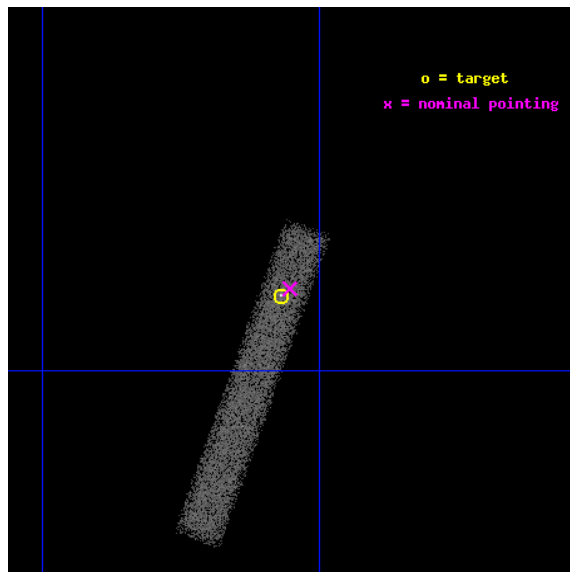
L2 Processing Date : May 16 2012

Contents

1	Front	2
2	OBI	3
2.1	OBI	3
2.1.1	Images	3
2.1.2	Bias	3
2.1.3	Parameters	4
2.1.4	Events	4
2.2	Compared Parameters	5
2.3	Aspect	6
2.4	Star Slots	9
2.4.1	Slot 3	9
2.4.2	Slot 4	10
2.4.3	Slot 5	11
2.4.4	Slot 6	12
2.4.5	Slot 7	13
2.5	FID Slots	14
2.5.1	Slot 0	14
2.5.2	Slot 1	15
2.5.3	Slot 2	16
A	Summary	17
A.1	Status	17
A.2	Comments	17

1 Front

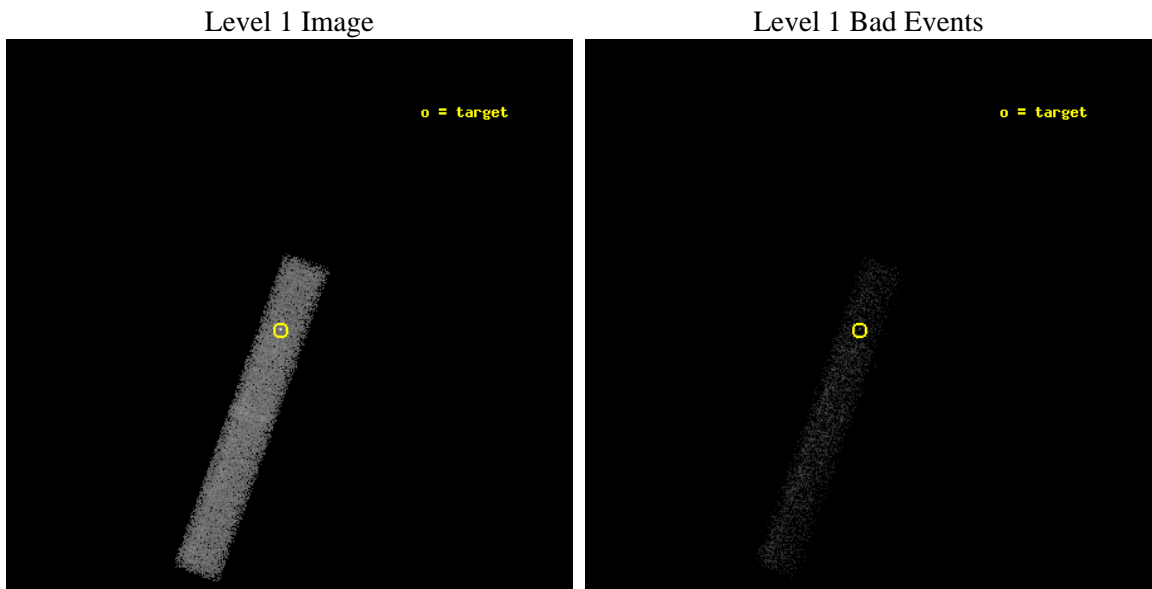
seq_num	500774	Sequence number
obs_id	7645	Observation id
title	Searching for X-ray variability in Rotating Radio Transients	Propo
observer	Dr. Nanda Rea	Principal investigator
object	RRAT J1819-1458	Source name
dtcycle	0	
cycle	P	events from which exps? Prim/Second/Both
ra_targ	274.892375	Observer's specified target RA [deg]
dec_targ	-14.967944	Observer's specified target Dec [deg]
ra_nom	274.88844366824	Nominal RA [deg]
dec_nom	-14.964921887734	Nominal Dec [deg]
roll_nom	109.7826656248	Nominal Roll [deg]
revision	2	Processing version of data
ontime	30523.998180628	Sum of GTIs [s]
liveltime	27683.655161099	Livetime [s]
ontime7	30523.998180628	Sum of GTIs [s]
l2events	17401	Number of level 2 events



2 OBI

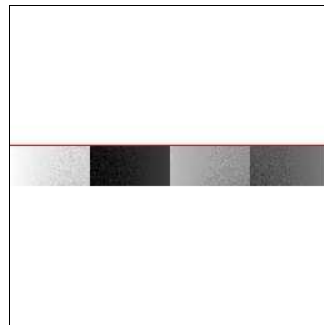
2.1 OBI

2.1.1 Images



2.1.2 Bias

Chip 7



2.1.3 Parameters

obi_num	0	Obi number	sched_exp_time	30394.000000	[s] Scheduled observation exposure time
ascdsver	8.4.4	Processing system revision	ontime	30523.998180628	Sum of GTIs [s]
caldbver	4.4.9	 	ontime7	30523.998180628	Sum of GTIs [s]
date	2012-05-16T03:45:17	Date and time of file creation	l1events	33008	Number of level 1 events
revision	2	Processing version of data			

2.1.4 Events

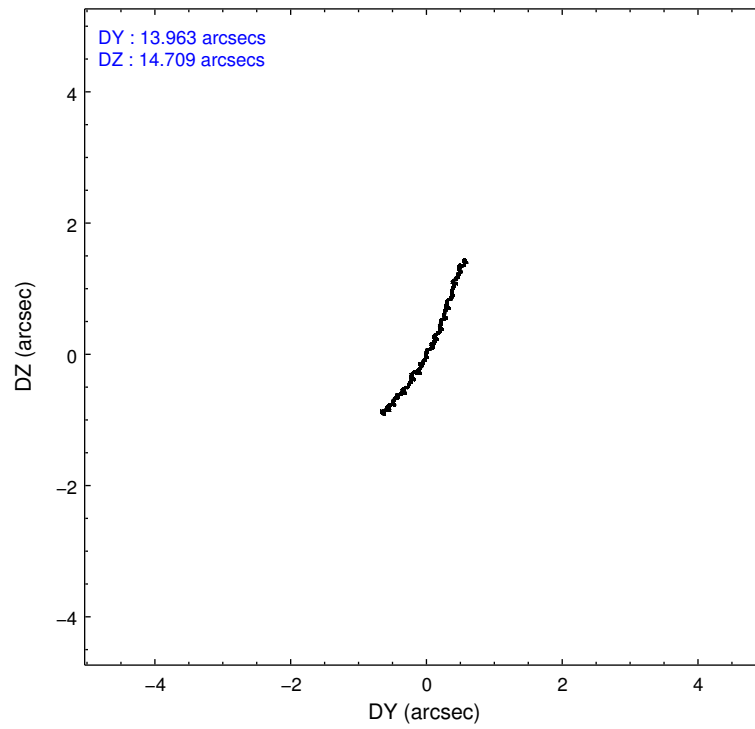
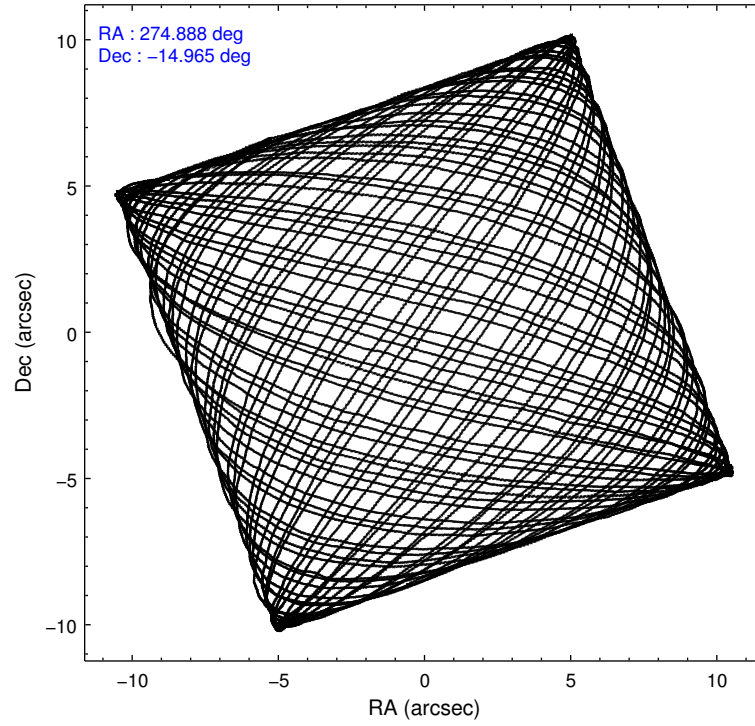
	ccd 7
level 1 events	33008
rejected events	14672
rejected %	44%

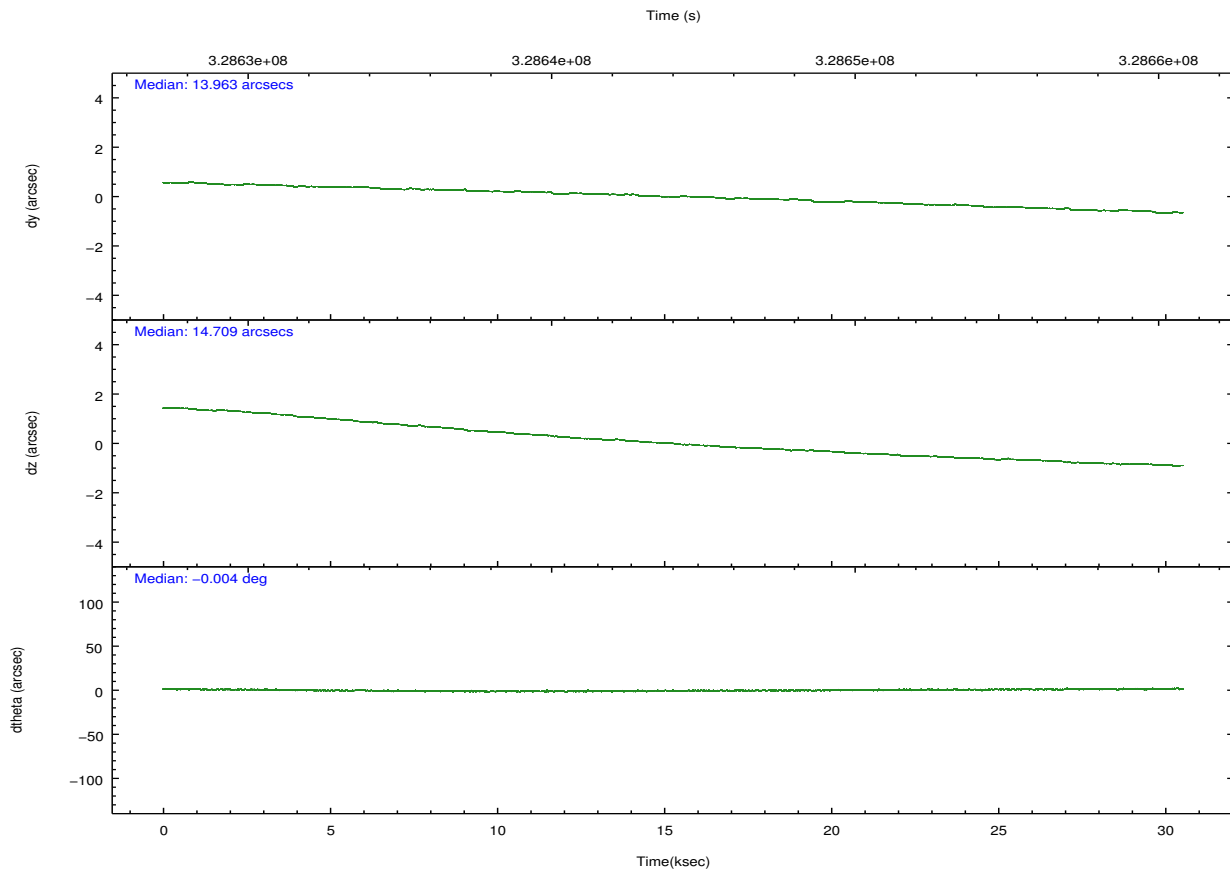
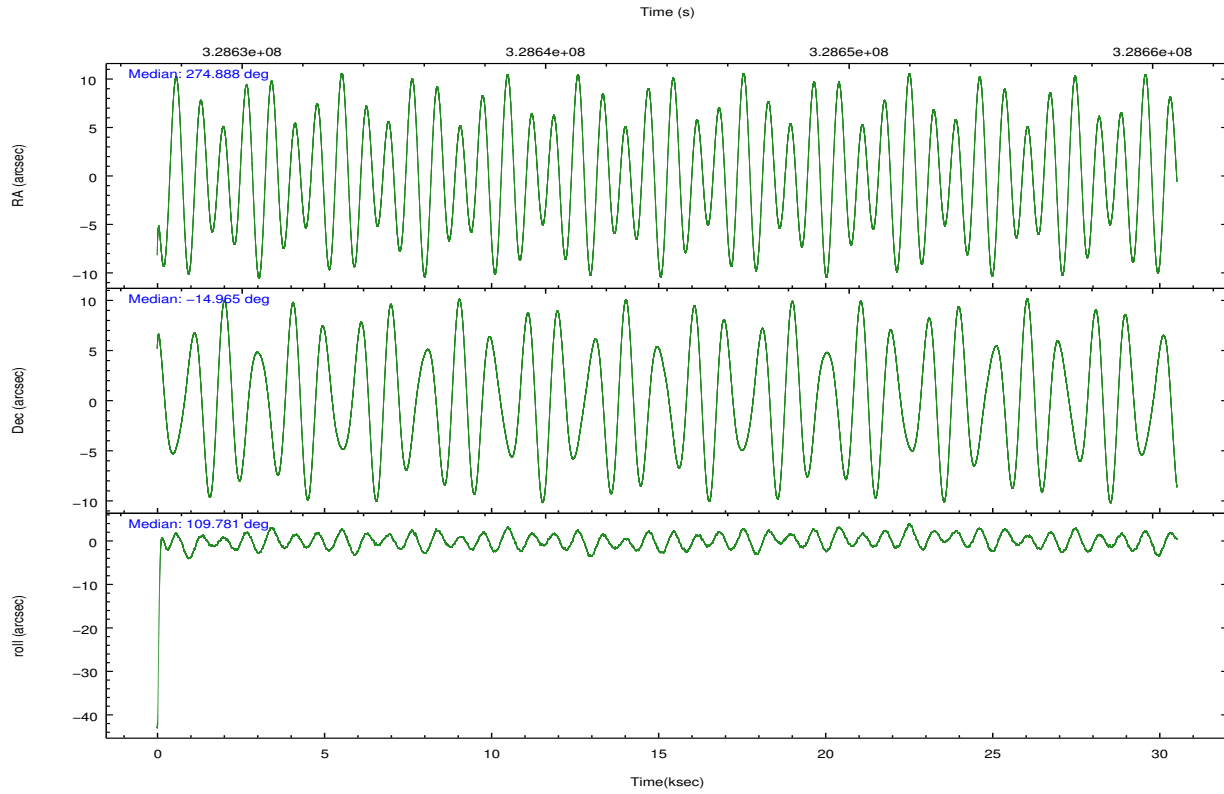
	ccd 7
grade 0 events	2450
	7%
grade 1 events	51
	0%
grade 2 events	3965
	12%
grade 3 events	2761
	8%
grade 4 events	2523
	7%
grade 5 events	3067
	9%
grade 6 events	7237
	21%
grade 7 events	10954
	33%

2.2 Compared Parameters

Parameter	Planned	Actual	Parameter	Planned	Actual
Instrument	ACIS	ACIS	Obspar format version number	7	7
Detector	ACIS-7	ACIS-7	Obspar file type	PREDICTED	ACTUAL
Grating	NONE	NONE	Obspar update status	NONE	UPDATED
Data mode	VFAINT	VFAINT	Number of optional ACIS chips dropped	0	0
Observation mode	POINTING	POINTING	On-chip summing requested	N	N
[deg] Pointing RA	274.910305	274.8884436682351	Subarray requested	CUSTOM	1/8
[deg] Pointing Dec	-14.982289	-14.96492188773378	Subarray start row	449	449
[deg] Pointing Roll	109.631707	109.7826656247972	Subarray row count	128	128
[mm] SIM focus pos	-0.684267	-0.6828225247311905	Alternating exposures requested	N	N
[mm] SIM defocus	0	0.001444936568705701	[s] Primary exposure time	0.000000	0.4
[mm] SIM translation stage pos	-190.132523	-190.1425803651734			
[mm] SIM translation stage offset	0	0.01005778216563158			
[s] Observation start time (MET)	328628856.184000	328627573.96454			
Observation start date	2008-05-31T13:46:31	2008-05-31T13:26:13			
[s] Observation end time (MET)	328659250.184000	328659570.3661			
Observation end date	2008-05-31T22:13:05	2008-05-31T22:19:30			
Read mode	TIMED	TIMED			

2.3 Aspect





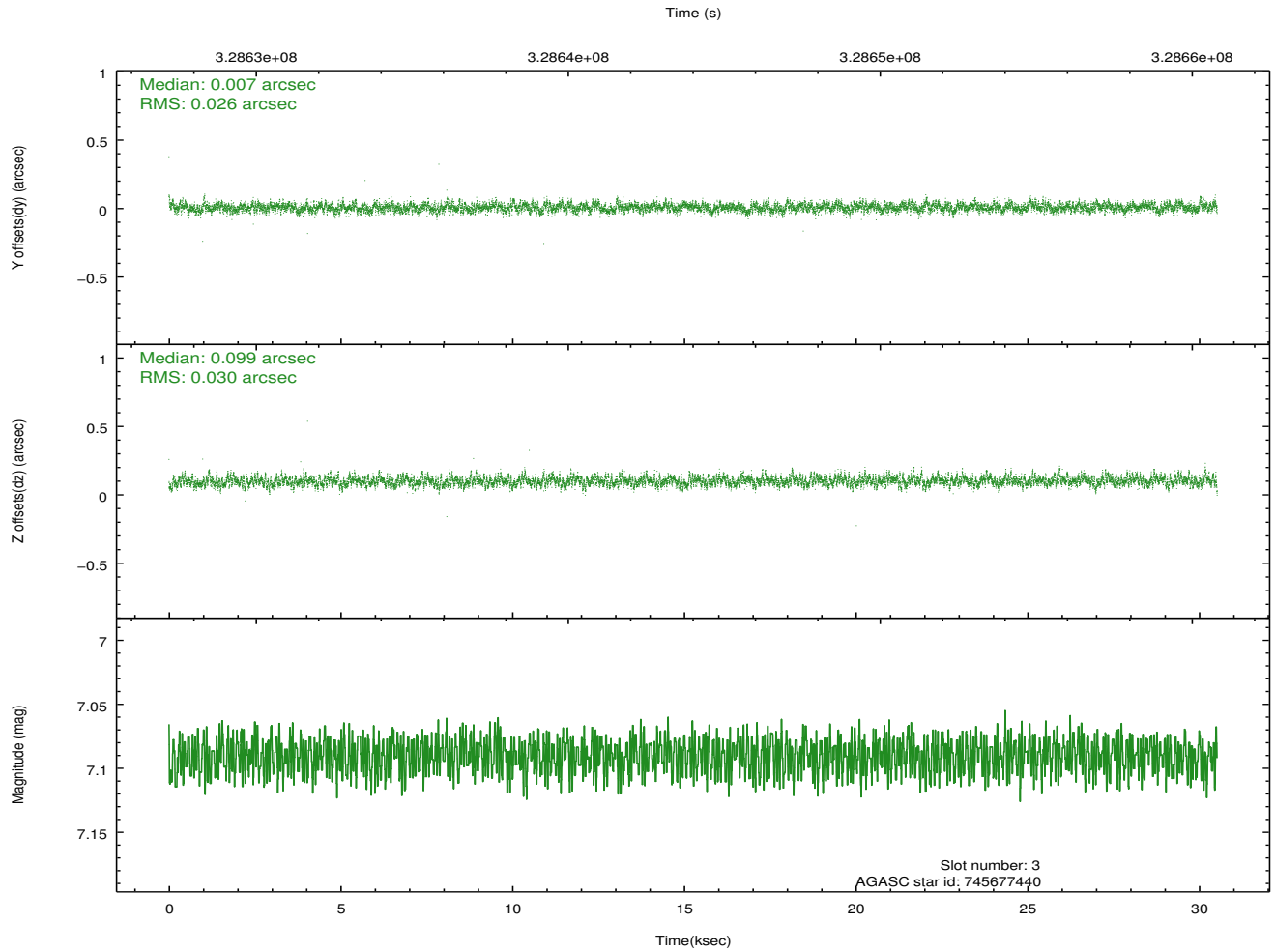
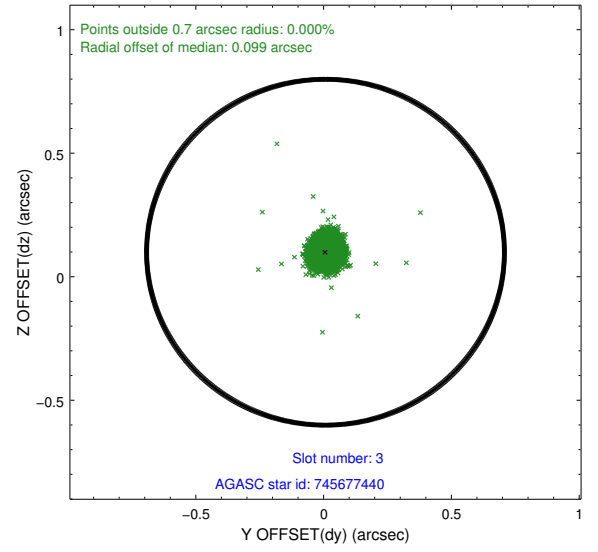
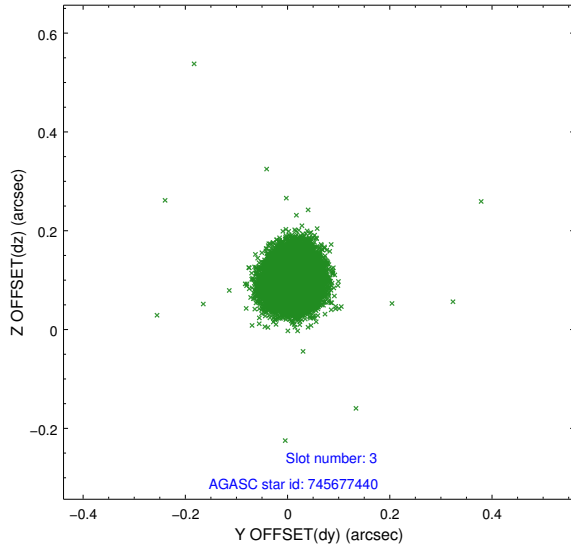
Slot Statistics

slot	status	id	mag	n_pts	med_dy	med_dz	dr1	dr2	ra	dec	mean_y	mean_z
0	FID	ACIS-S-2	6.88	7444	-0.063	-0.020	0.016	0.032	0.000000	0.000000	-766.94	-1736.16
1	FID	ACIS-S-4	6.97	7445	0.168	0.035	0.015	0.041	0.000000	0.000000	2146.52	172.31
2	FID	ACIS-S-5	6.99	7445	-0.136	-0.006	0.012	0.018	0.000000	0.000000	-1819.78	166.01
3	GUIDE	745677440	7.09	14891	0.007	0.099	0.041	0.067	275.264510	-14.978543	-402.39	-1163.76
4	GUIDE	821170816	6.68	14890	-0.080	-0.072	0.041	0.064	274.607248	-15.303658	-736.97	1380.00
5	GUIDE	821179256	7.34	14884	0.078	-0.015	0.045	0.071	274.840900	-15.612800	-2057.10	989.40
6	GUIDE	745680576	8.68	14823	0.046	-0.003	0.062	0.101	274.063292	-14.644899	2129.85	2372.78
7	GUIDE	745675904	9.18	14881	-0.050	-0.010	0.082	0.137	274.379684	-14.452468	2415.99	1102.53

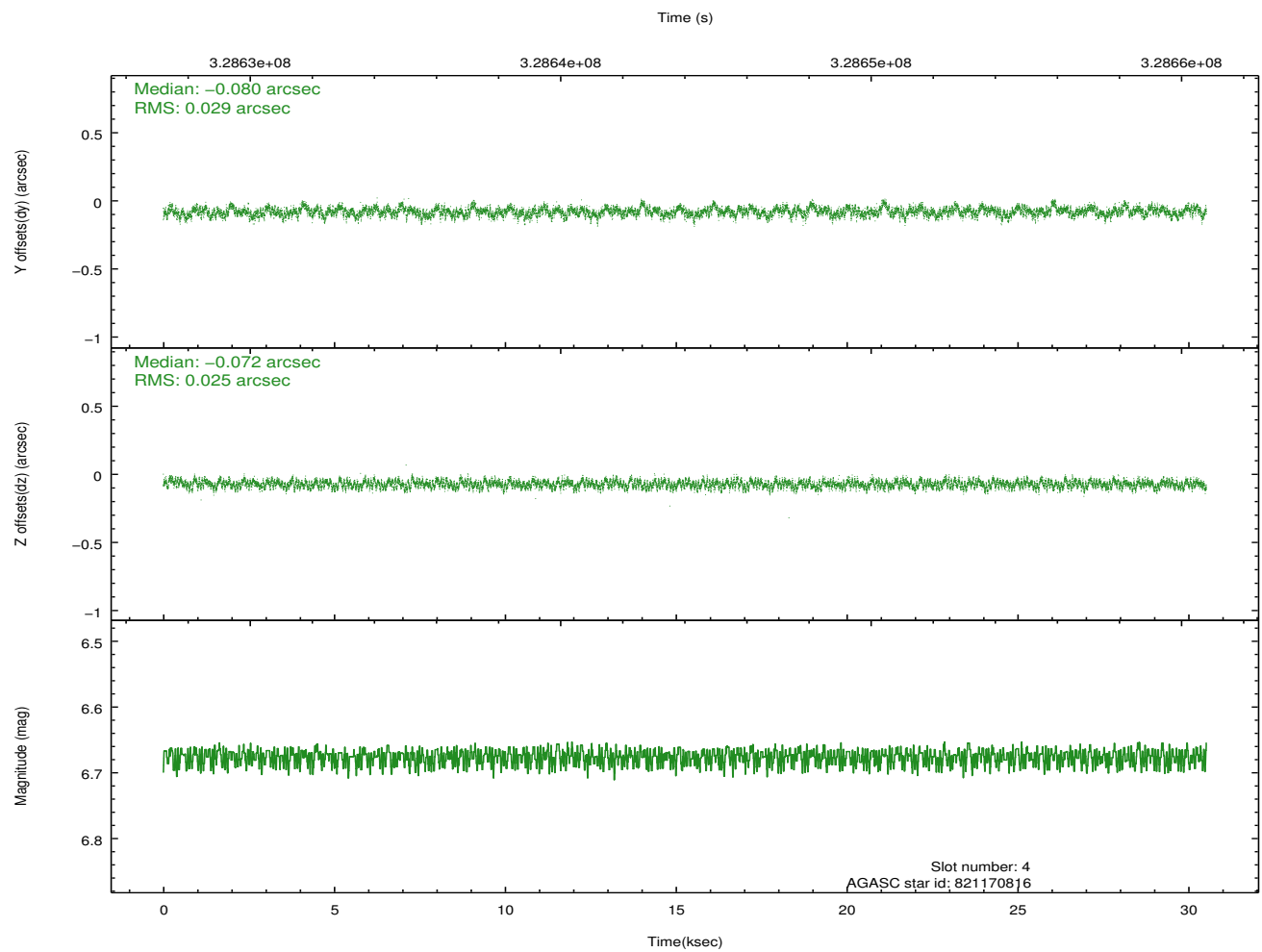
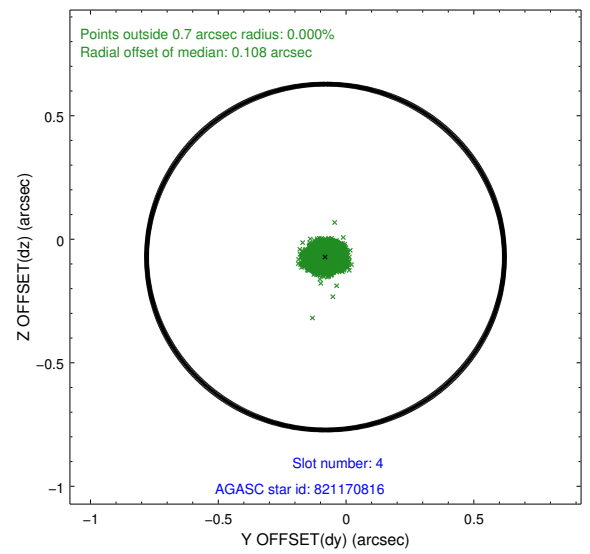
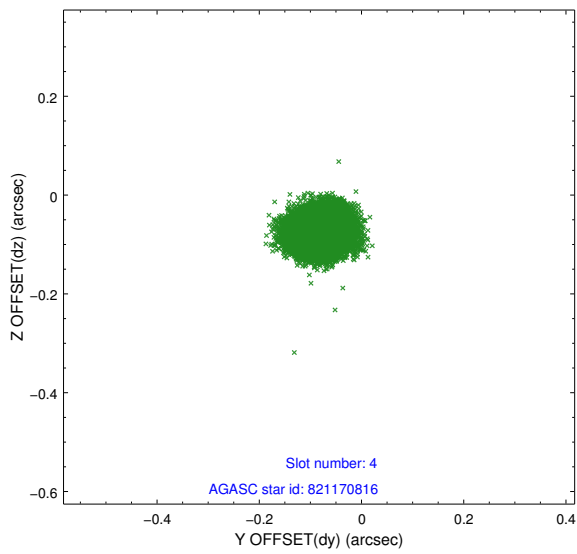
∞

2.4 Star Slots

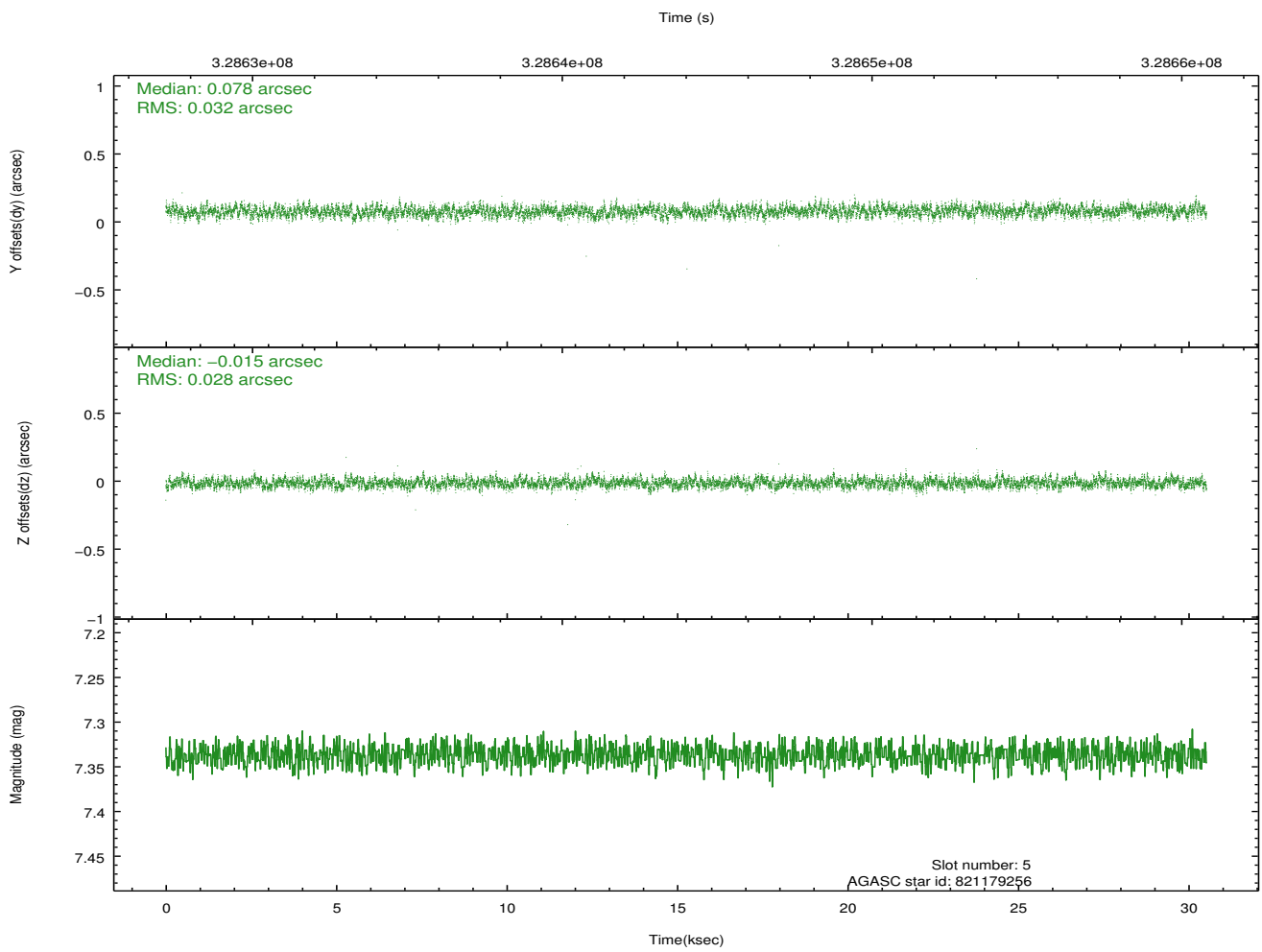
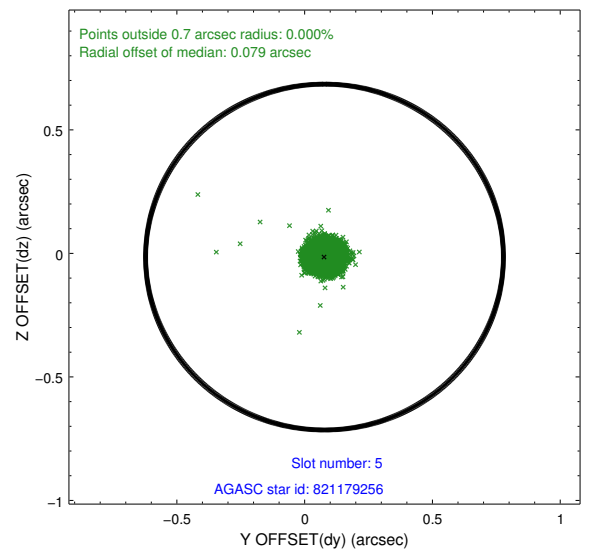
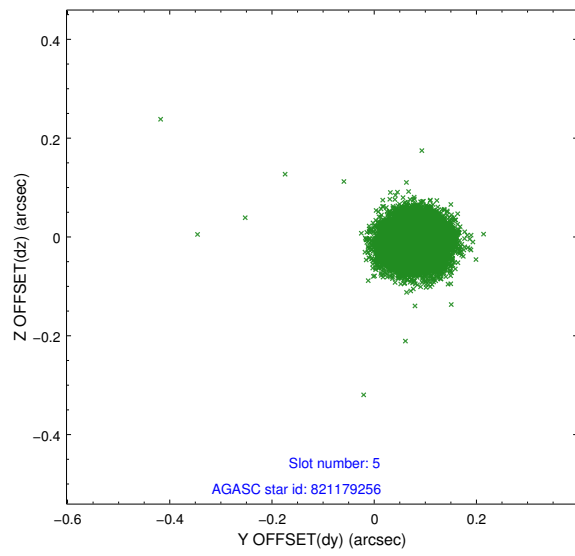
2.4.1 Slot 3



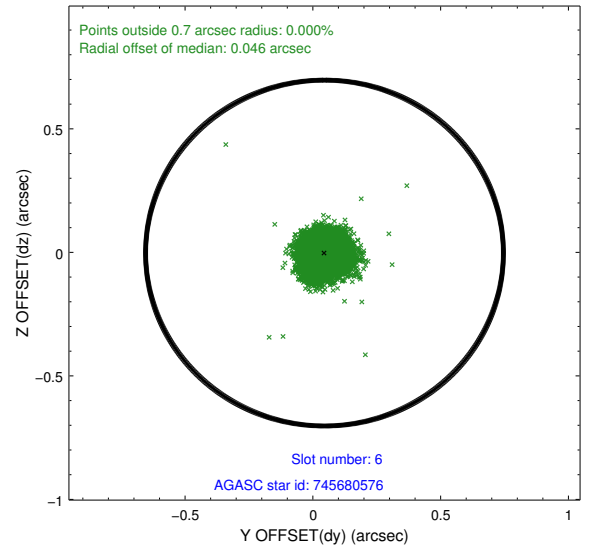
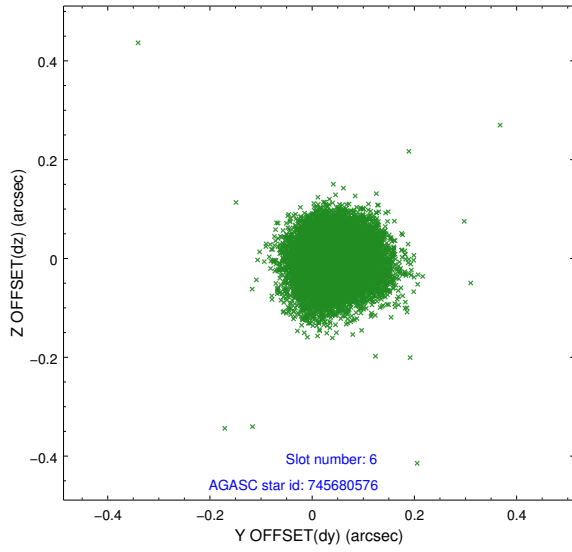
2.4.2 Slot 4



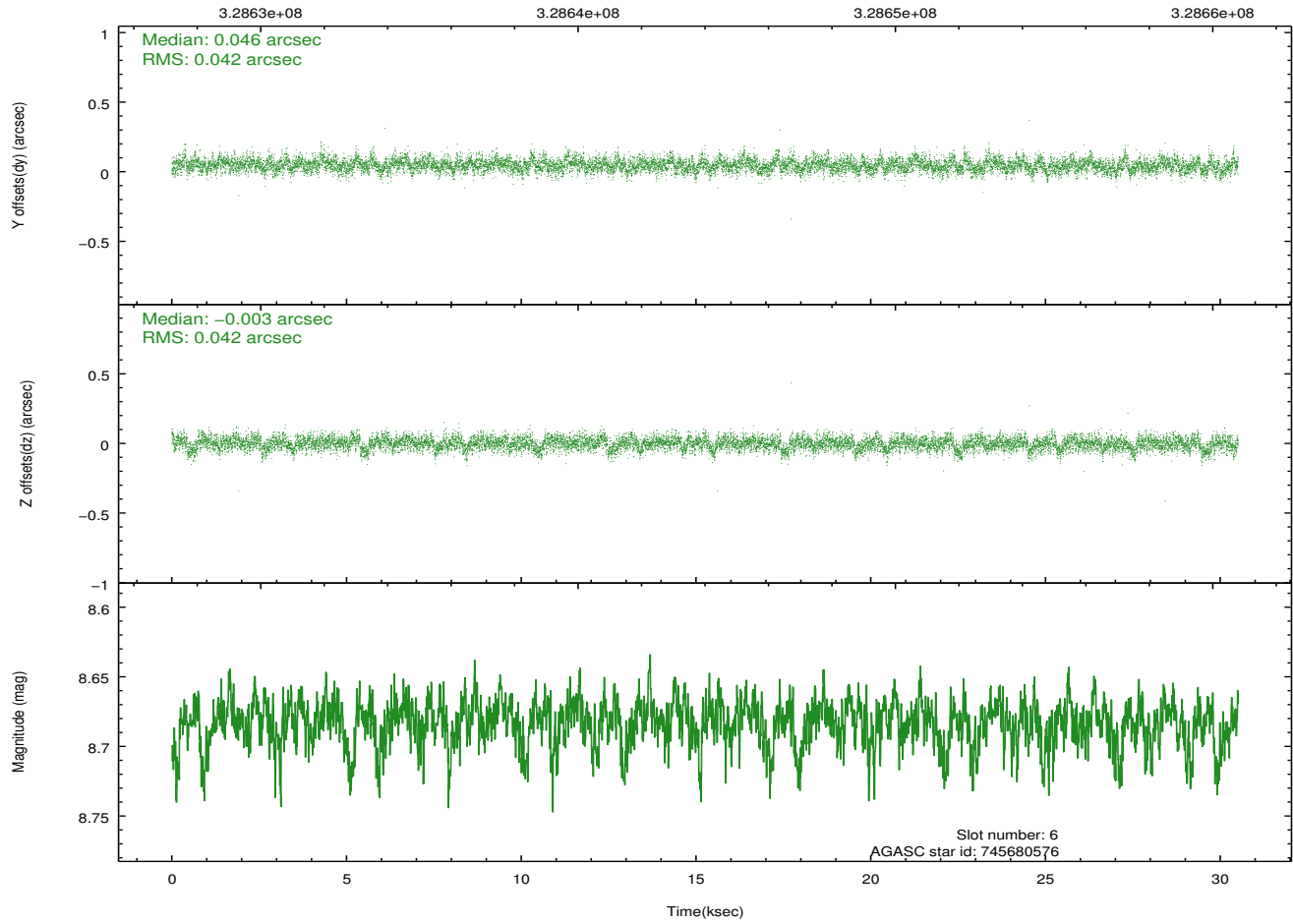
2.4.3 Slot 5



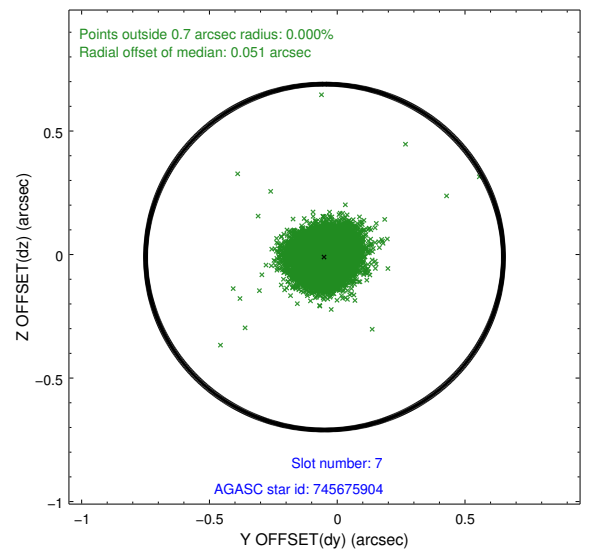
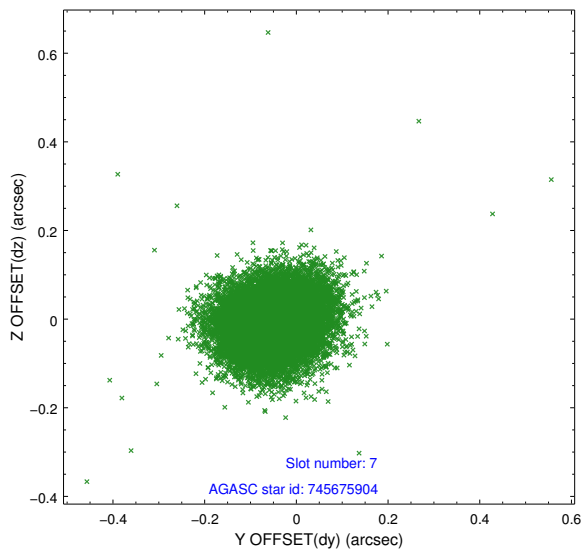
2.4.4 Slot 6



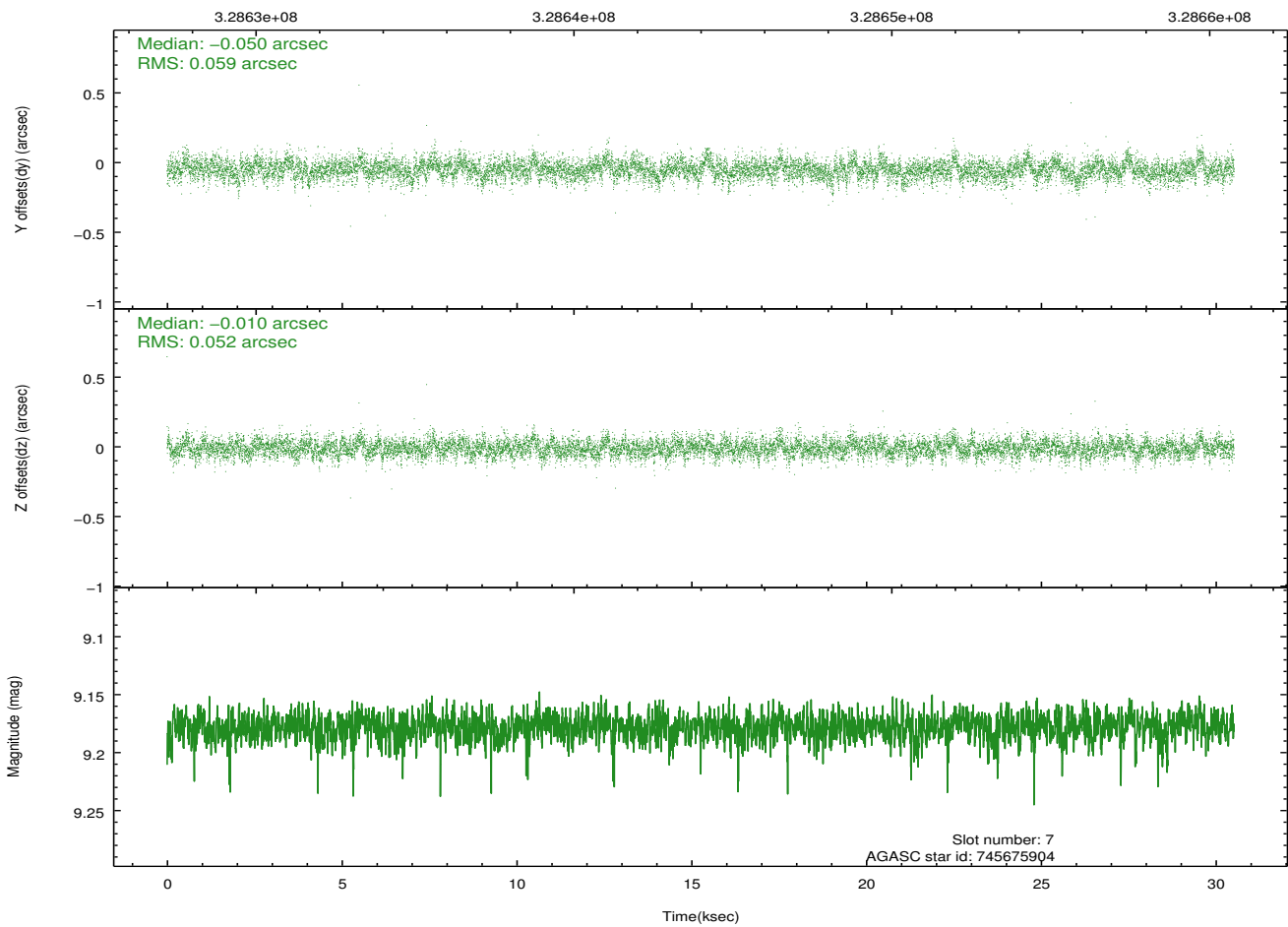
Time (s)



2.4.5 Slot 7

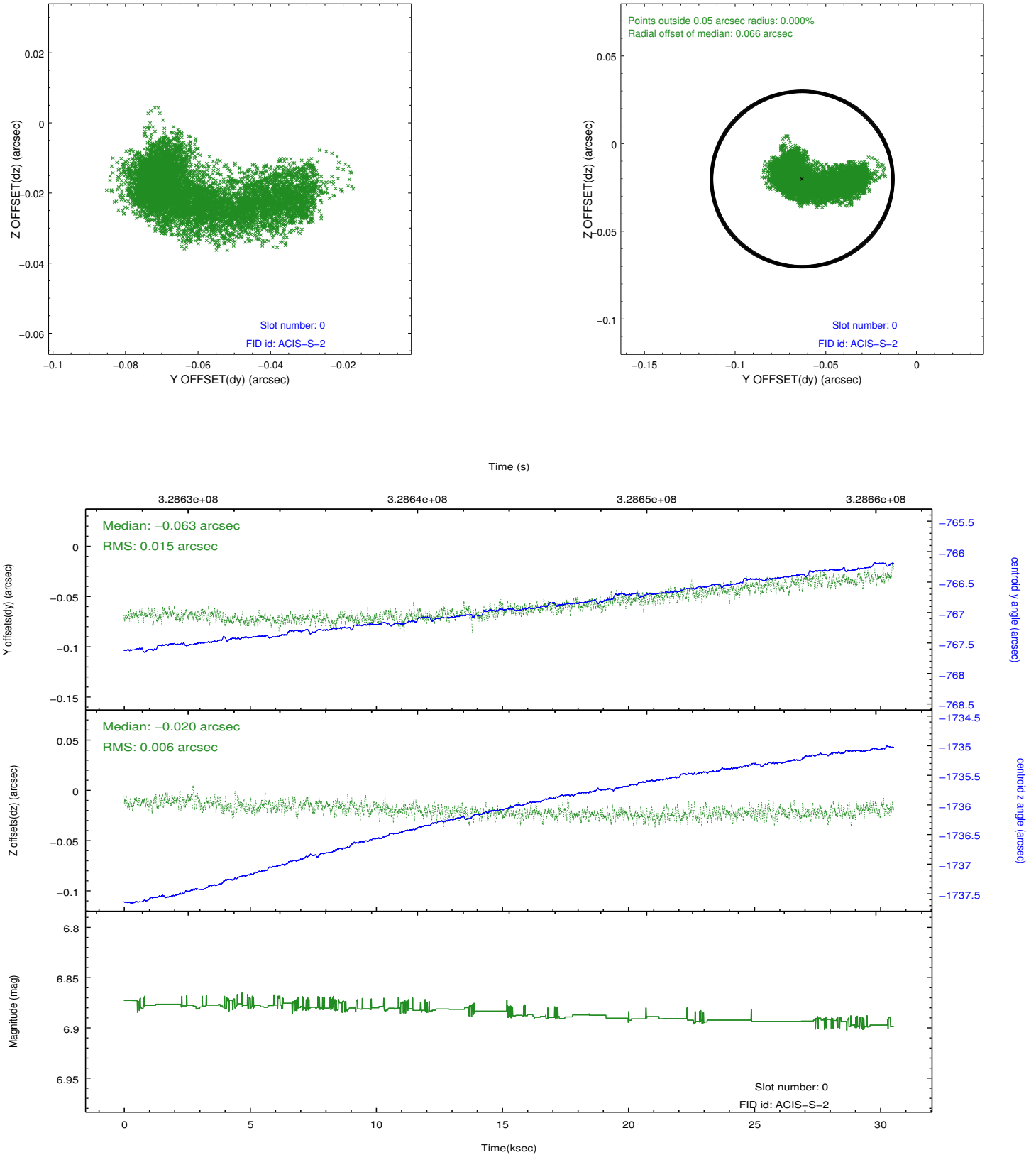


Time (s)

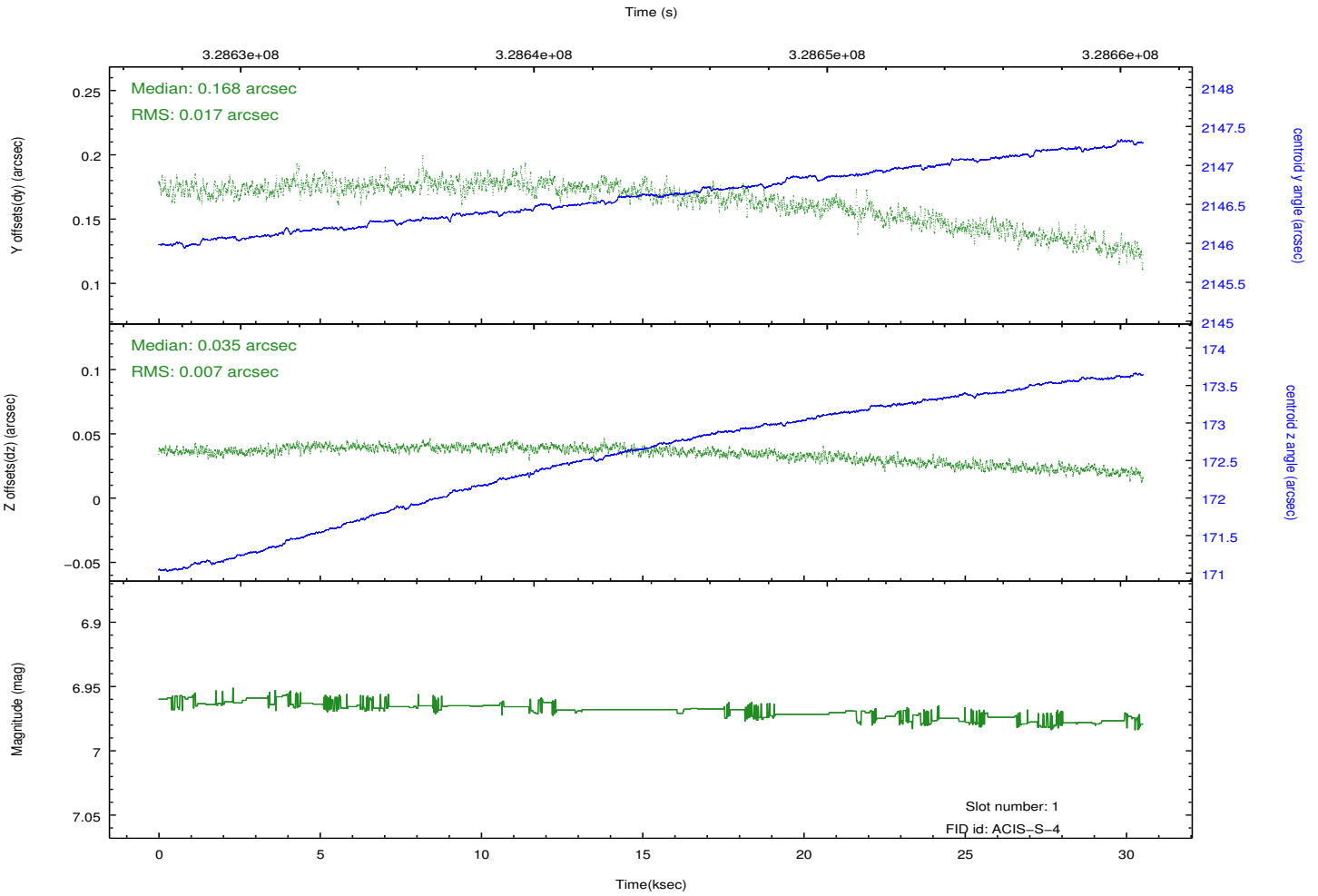
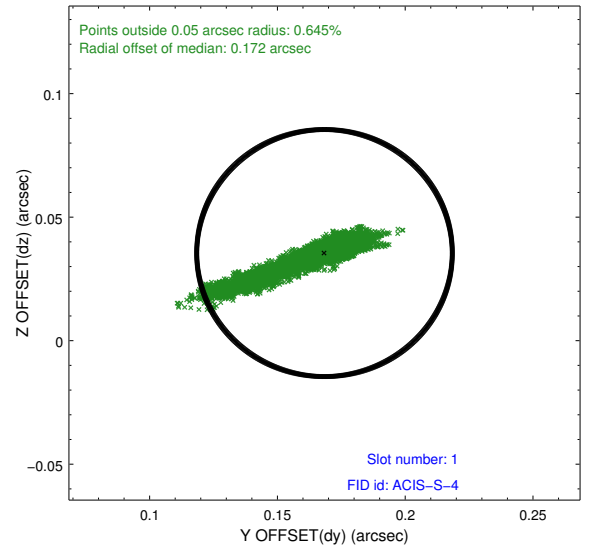
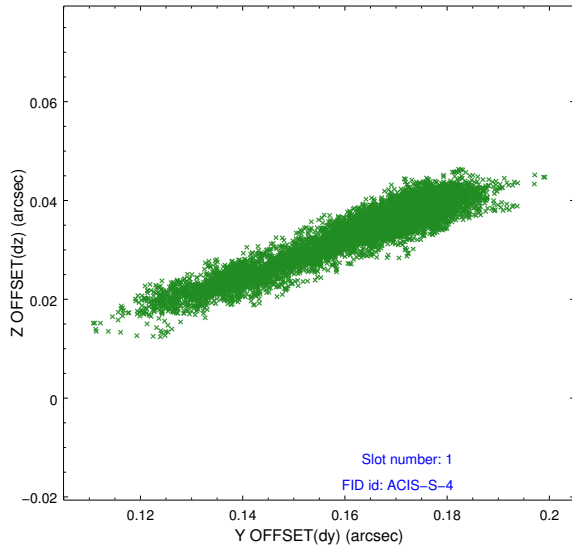


2.5 FID Slots

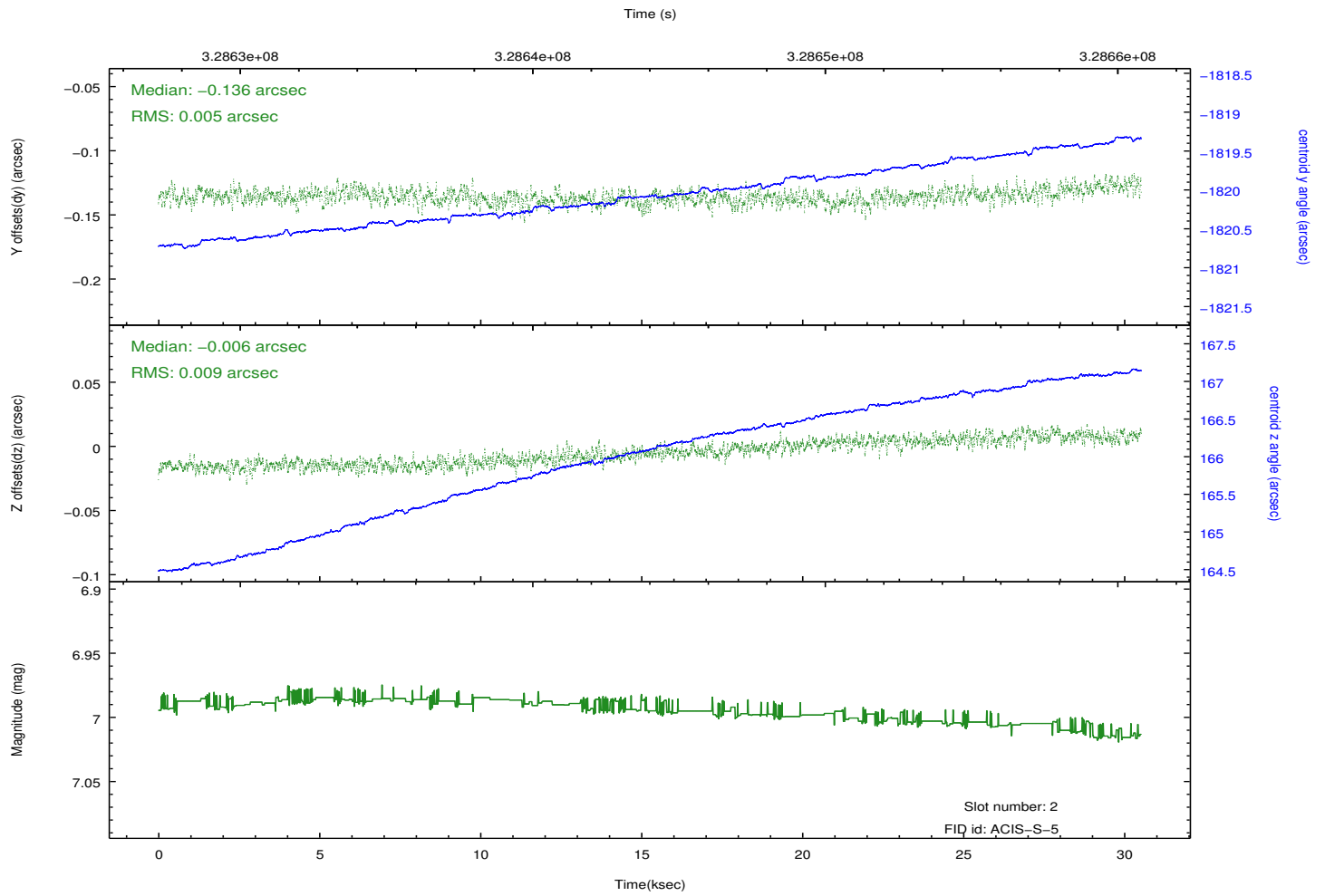
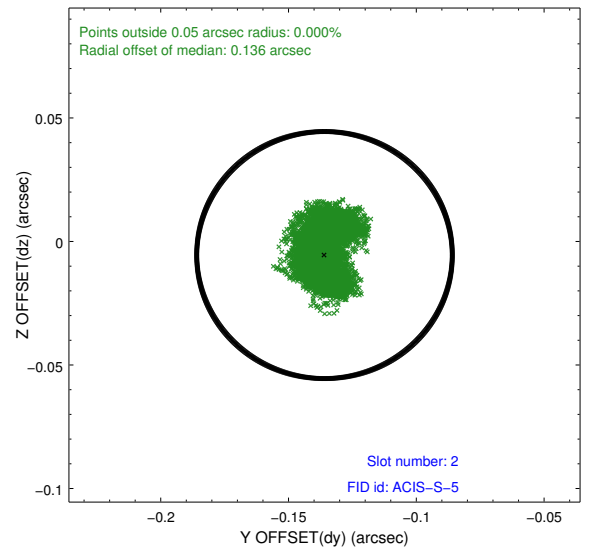
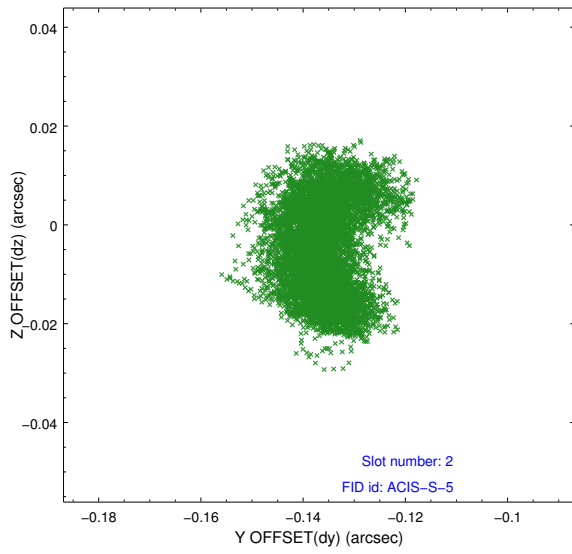
2.5.1 Slot 0



2.5.2 Slot 1



2.5.3 Slot 2



A Summary

A.1 Status

V&V Scientist	Jen Lauer
V&V Date (YYYY-MM-DD)	2012.05.22
V&V Edition	1
V&V Disposition and Status	OK
V&V Charge Time	30.5239981

A.2 Comments