

V&V Reference Report

L2 ASCDS Version : 8.4.3.1

Observation 7745 - L2 Version 2
Chandra X-Ray Center

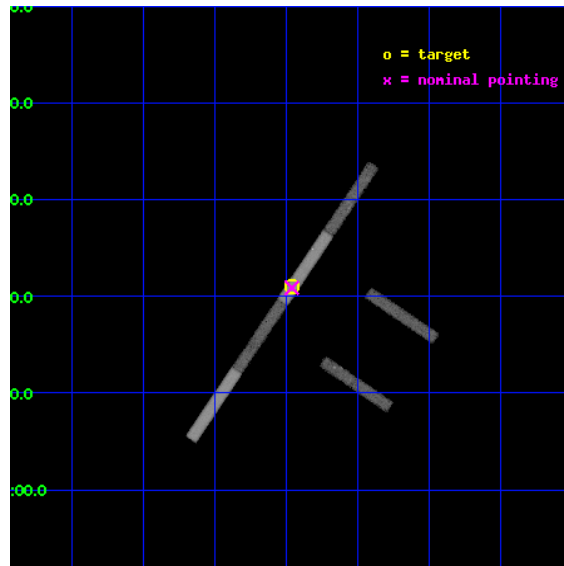
L2 Processing Date : Apr 13 2012

Contents

1	Front	2
2	OBI	3
2.1	OBI	3
2.1.1	Images	3
2.1.2	Bias	3
2.1.3	Parameters	4
2.1.4	Events	4
2.2	Compared Parameters	5
2.3	Aspect	6
2.4	Star Slots	9
2.4.1	Slot 3	9
2.4.2	Slot 4	10
2.4.3	Slot 5	11
2.4.4	Slot 6	12
2.4.5	Slot 7	13
2.5	FID Slots	14
2.5.1	Slot 0	14
2.5.2	Slot 1	15
2.5.3	Slot 2	16
A	Summary	17
A.1	Status	17
A.2	Comments	17

1 Front

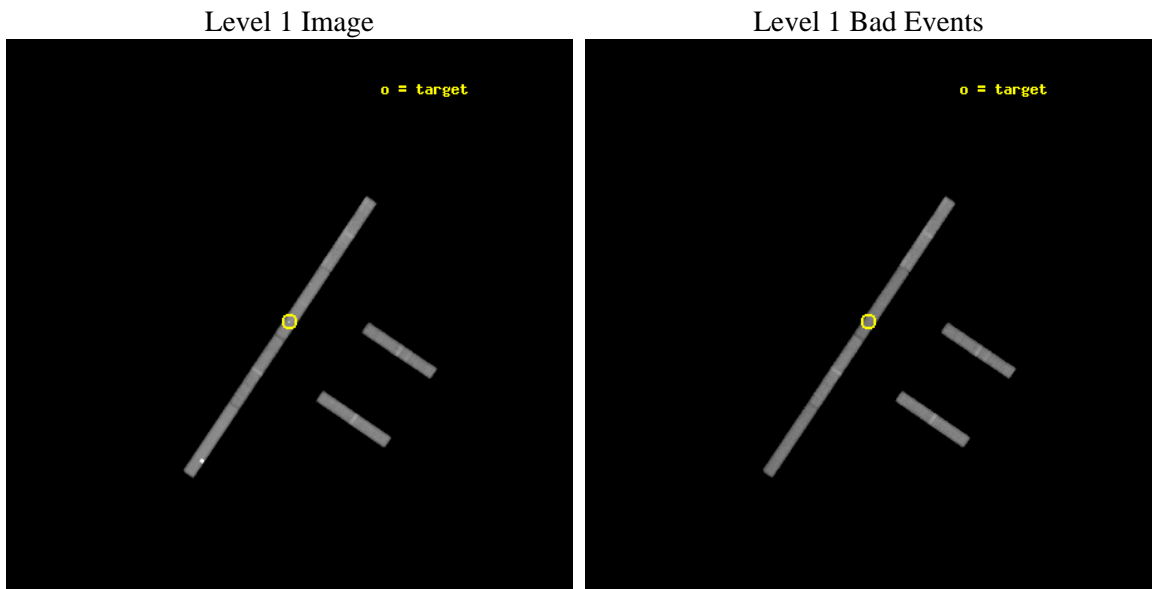
seq_num	701413	Sequence number
obs_id	7745	Observation id
title	Ionization map of the Seyfert 2 galaxy Mrk 573	Proposal title
observer	Dr Stefano Bianchi	Principal investigator
object	Mrk573	Source name
dtycycle	0	
cycle	P	events from which exps? Prim/Second/Both
ra_targ	25.990833	Observer's specified target RA [deg]
dec_targ	2.35	Observer's specified target Dec [deg]
ra_nom	25.990155636157	Nominal RA [deg]
dec_nom	2.3480188930208	Nominal Dec [deg]
roll_nom	303.99704966163	Nominal Roll [deg]
revision	2	Processing version of data
ontime	40316.499313354	Sum of GTIs [s]
livetime	38083.706033882	Livetime [s]
ontime2	40316.499313354	Sum of GTIs [s]
ontime3	40316.499313354	Sum of GTIs [s]
ontime5	40316.499313354	Sum of GTIs [s]
ontime6	40316.499313354	Sum of GTIs [s]
ontime7	40316.499313354	Sum of GTIs [s]
ontime8	40316.499313354	Sum of GTIs [s]
l2events	95898	Number of level 2 events



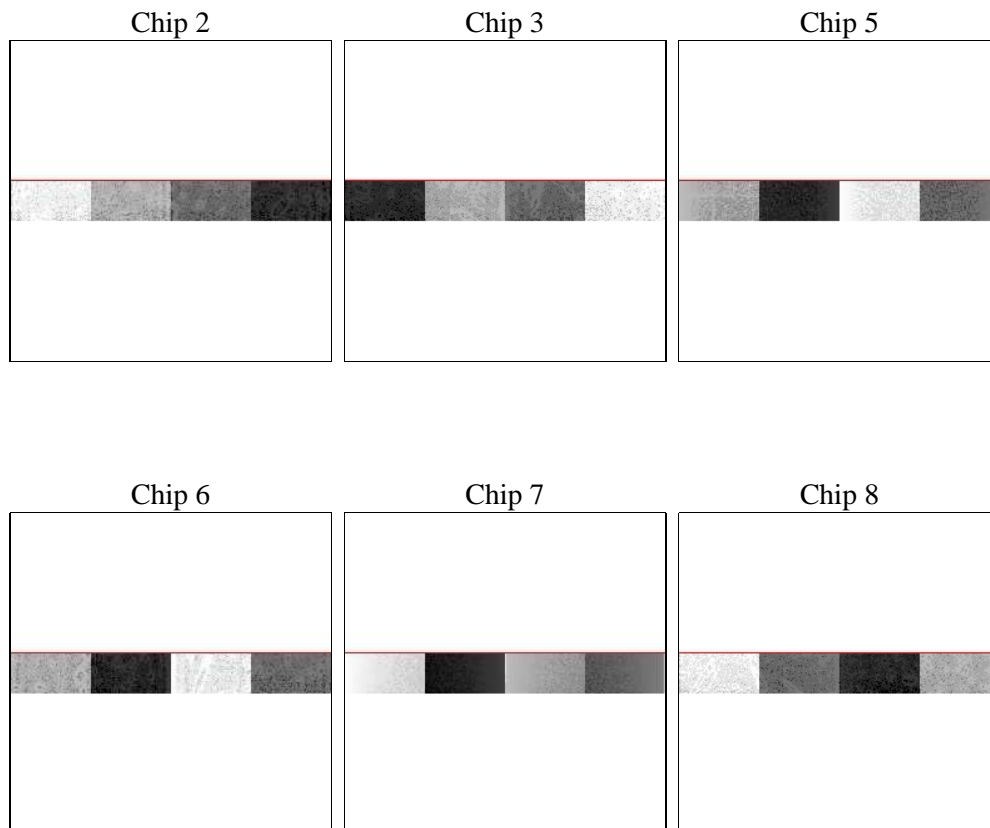
2 OBI

2.1 OBI

2.1.1 Images



2.1.2 Bias



2.1.3 Parameters

obi_num	0	Obi number	sched_exp_time	40128.722000	[s] Scheduled observation exposure time
ascdsver	8.4.3.1	Processing system revision	ontime	40316.499313354	Sum of GTIs [s]
caldbver	4.4.9	 	ontime2	40316.499313354	Sum of GTIs [s]
date	2012-04-13T16:55:47	Date and time of file creation	ontime3	40316.499313354	Sum of GTIs [s]
revision	2	Processing version of data	ontime5	40316.499313354	Sum of GTIs [s]
			ontime6	40316.499313354	Sum of GTIs [s]
			ontime7	40316.499313354	Sum of GTIs [s]
			ontime8	40316.499313354	Sum of GTIs [s]
			l1events	499329	Number of level 1 events

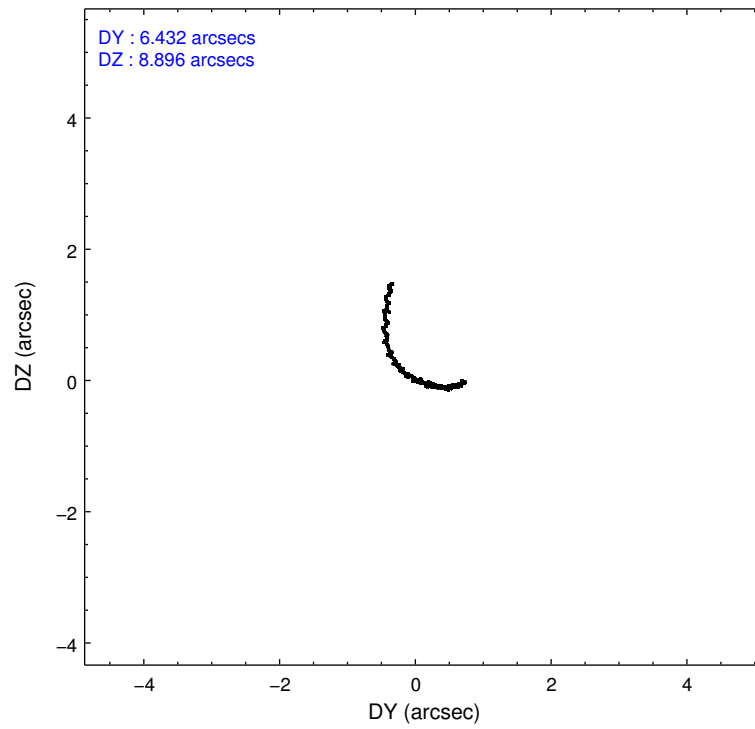
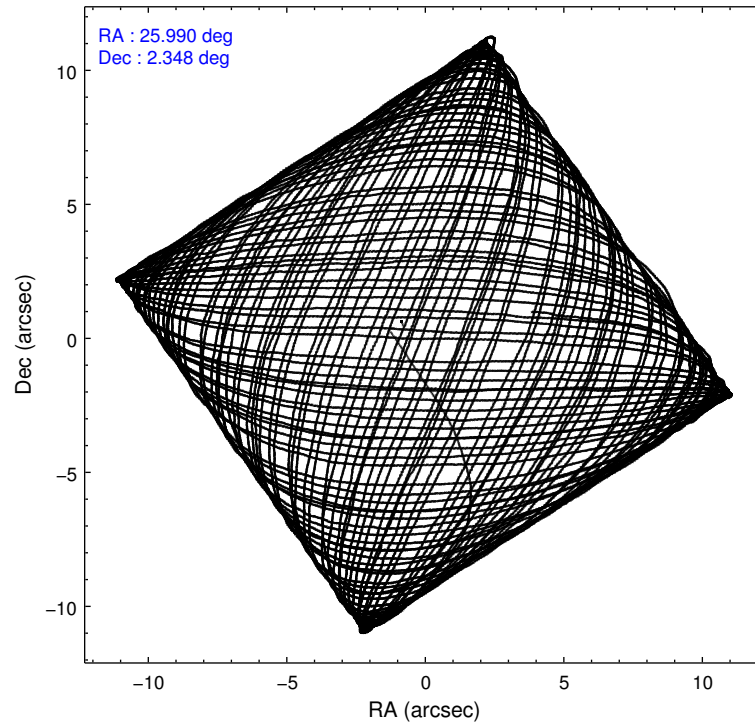
2.1.4 Events

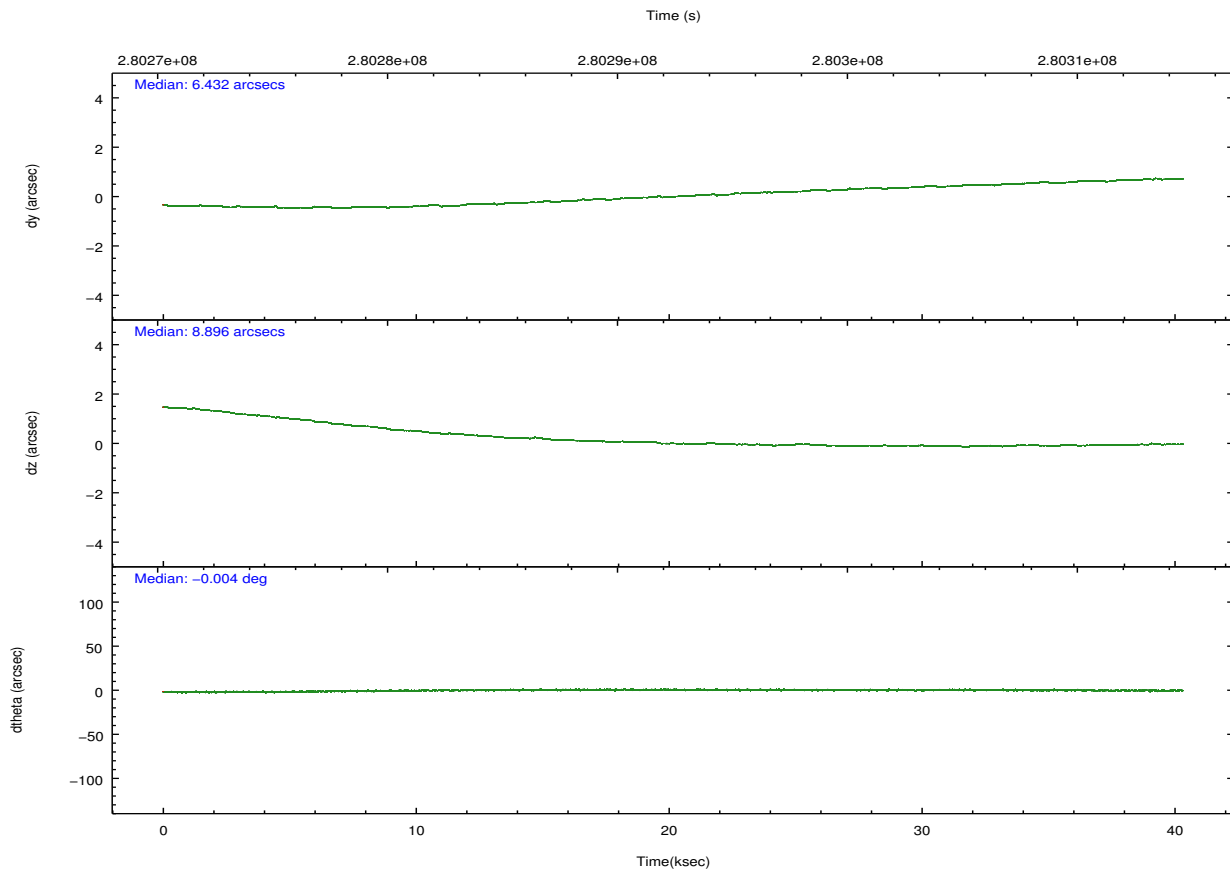
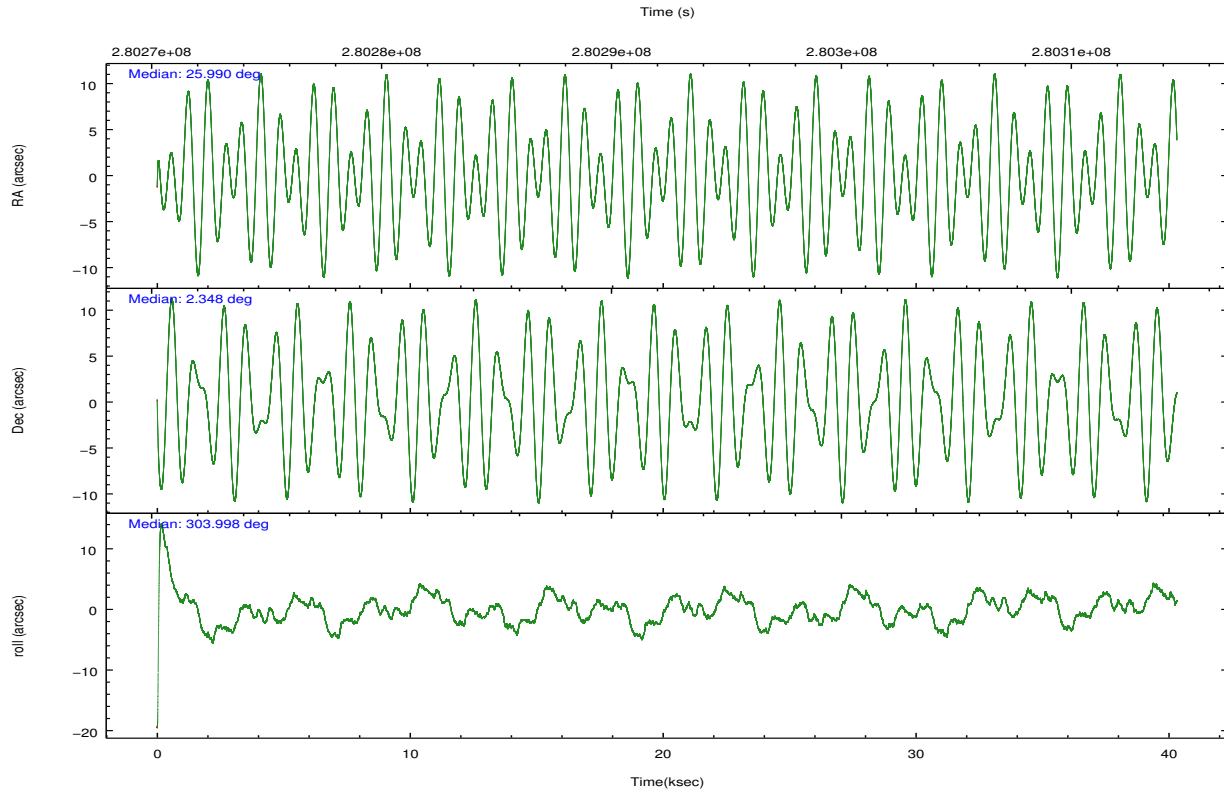
	ccd 2	ccd 3	ccd 5	ccd 6	ccd 7	ccd 8		ccd 2	ccd 3	ccd 5	ccd 6	ccd 7	ccd 8
level 1 events	69777	61206	133828	65204	79552	89762	grade 0 events	2906	2689	48985	2735	5017	4767
rejected events	62125	54215	44241	57575	42463	72668		4%	4%	36%	4%	6%	5%
rejected %	89%	88%	33%	88%	53%	80%	grade 1 events	28	18	156	18	105	20
								0%	0%	0%	0%	0%	0%
							grade 2 events	1353	1215	19375	1387	8031	3518
								1%	1%	14%	2%	10%	3%
							grade 3 events	1125	1111	2508	1180	4155	1970
								1%	1%	1%	1%	5%	2%
							grade 4 events	1231	1067	2354	1129	3985	1836
								1%	1%	1%	1%	5%	2%
							grade 5 events	2102	2176	6460	2435	6942	3043
								3%	3%	4%	3%	8%	3%
							grade 6 events	1199	1091	18397	1344	16622	5366
								1%	1%	13%	2%	20%	5%
							grade 7 events	59833	51839	35593	54976	34695	69242
								85%	84%	26%	84%	43%	77%

2.2 Compared Parameters

Parameter	Planned	Actual	Parameter	Planned	Actual
Instrument	ACIS	ACIS	Obspar format version number	7	7
Detector	ACIS-235678	ACIS-235678	Obspar file type	PREDICTED	ACTUAL
Grating	NONE	NONE	Obspar update status	NONE	UPDATED
Data mode	FAINT	FAINT	CCD I0 on	N	N
Observation mode	POINTING	POINTING	CCD I1 on	N	N
[deg] Pointing RA	25.965493	25.99015563615706	CCD I2 on	O3	Y
[deg] Pointing Dec	2.359642	2.348018893020845	CCD I3 on	O4	Y
[deg] Pointing Roll	303.841444	303.9970496616285	CCD S0 on	N	N
[mm] SIM focus pos	-0.684267	-0.6828225247311905	CCD S1 on	O1	Y
[mm] SIM defocus	0	0.001444936568705701	CCD S2 on	O5	Y
[mm] SIM translation stage pos	-190.132523	-190.1400660498719	CCD S3 on	Y	Y
[mm] SIM translation stage offset	0	0.00754346686406393	CCD S4 on	O2	Y
[s] Observation start time (MET)	280272439.184000	280271177.3914	CCD S5 on	N	N
Observation start date	2006-11-18T21:26:14	2006-11-18T21:06:17	Number of optional ACIS chips dropped	0	0
[s] Observation end time (MET)	280312568.184000	280312791.88086	On-chip summing requested	N	N
Observation end date	2006-11-19T08:35:03	2006-11-19T08:39:51	Subarray requested	CUSTOM	1/8
Read mode	TIMED	TIMED	Subarray start row	449	449
			Subarray row count	128	128
			Alternating exposures requested	N	N
			[s] Primary exposure time	0.000000	0.7

2.3 Aspect



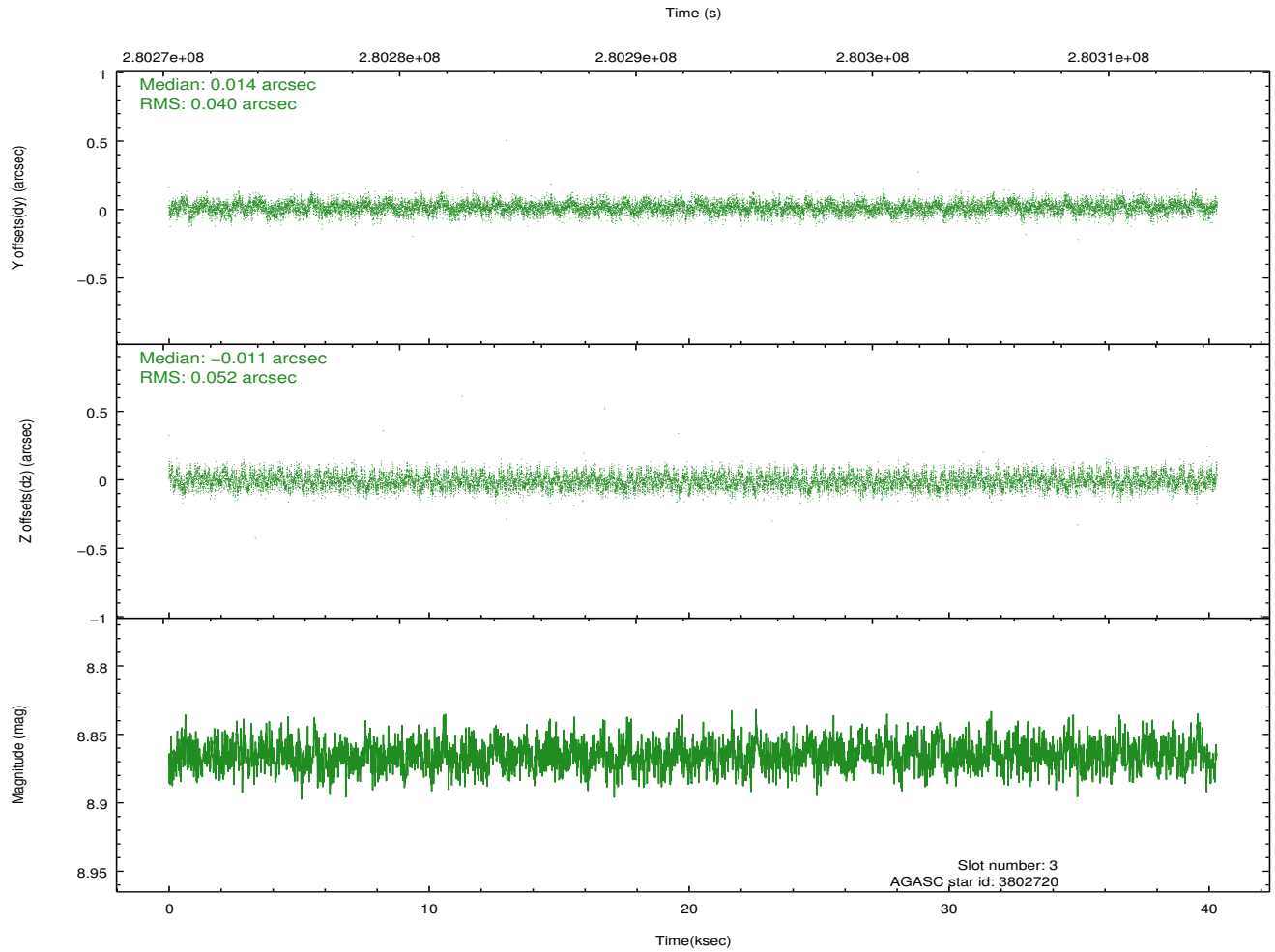
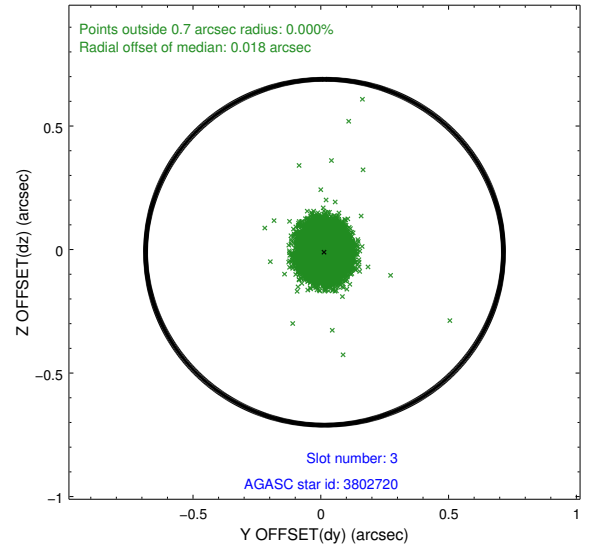
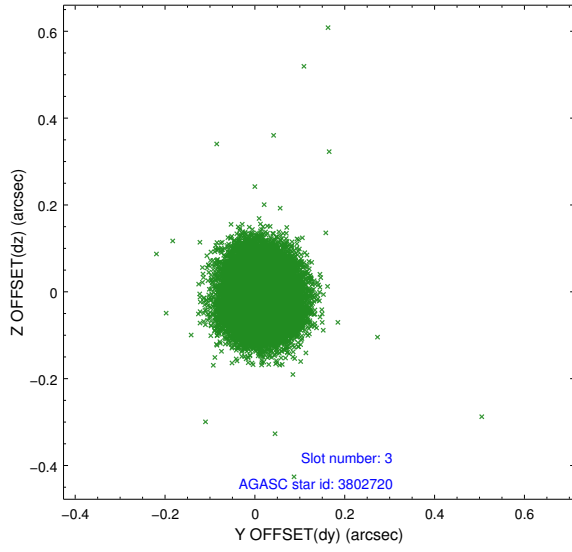


Slot Statistics

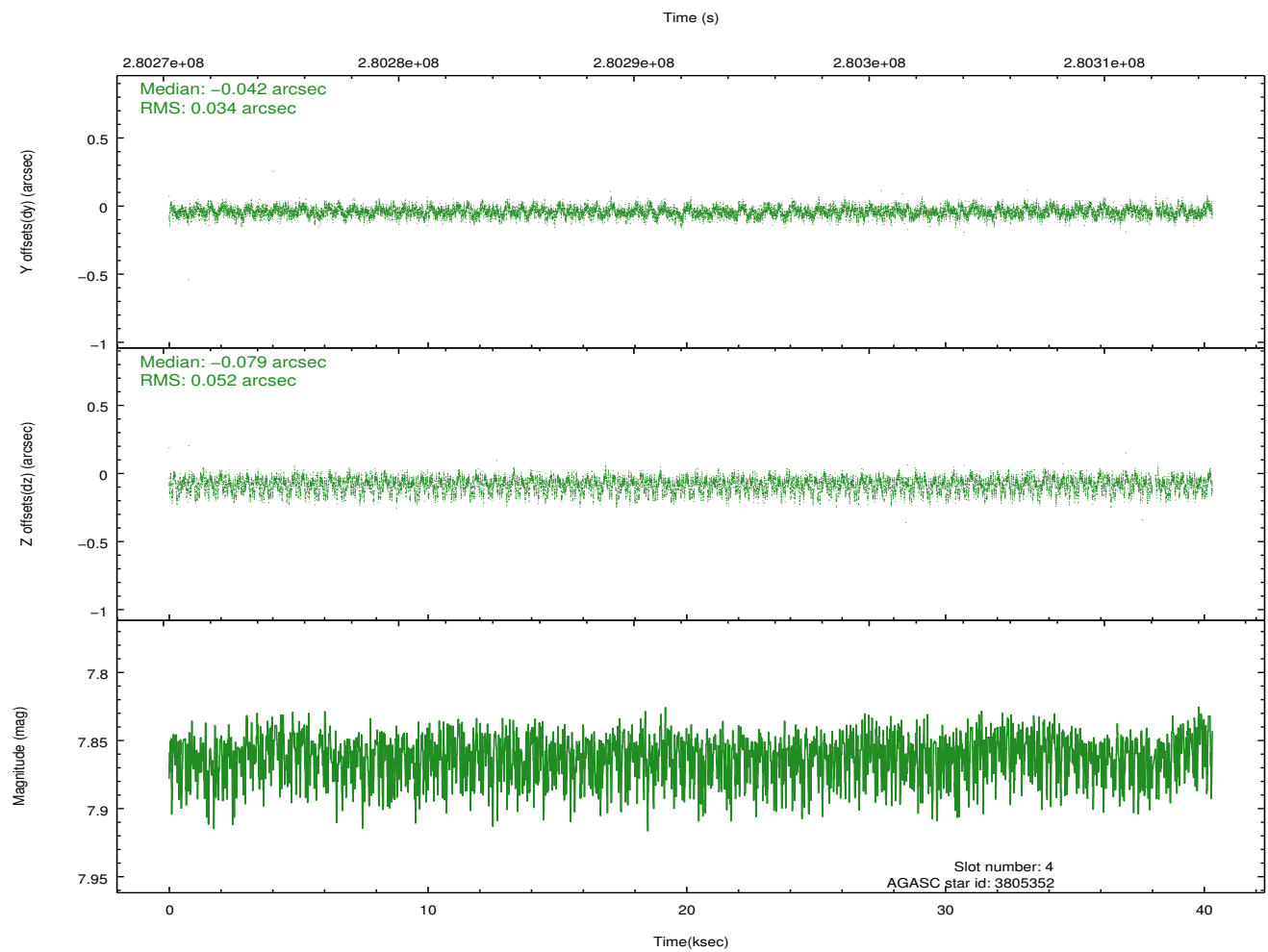
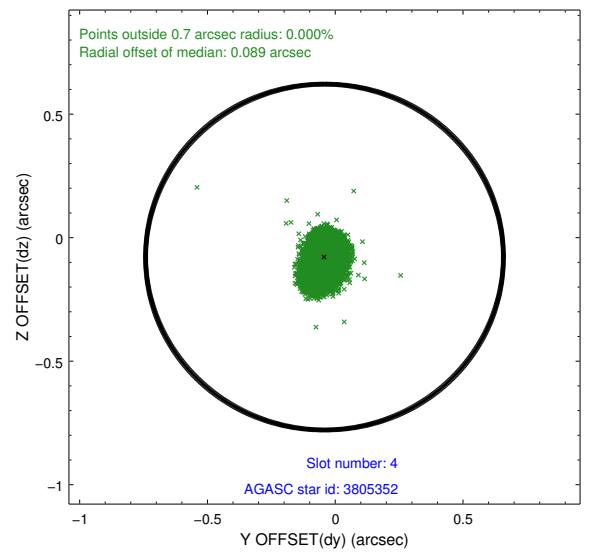
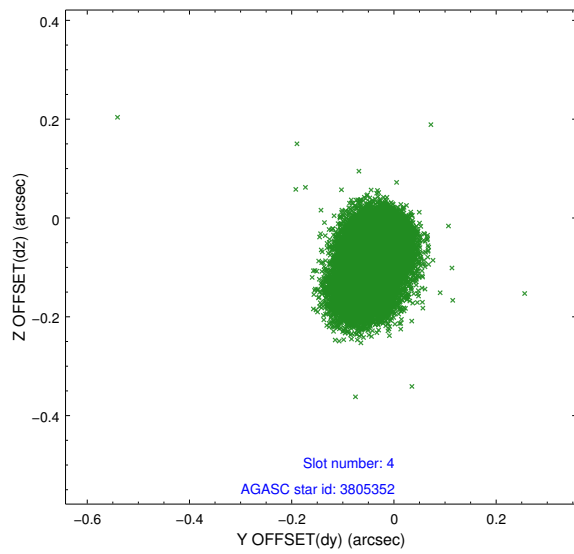
slot	status	id	mag	n_pts	med_dy	med_dz	dr1	dr2	ra	dec	mean_y	mean_z
0	FID	ACIS-S-2	7.10	9835	-0.052	-0.054	0.019	0.031	0.000000	0.000000	-759.25	-1730.44
1	FID	ACIS-S-4	7.22	9834	0.110	0.041	0.012	0.027	0.000000	0.000000	2154.17	178.14
2	FID	ACIS-S-5	7.24	9835	-0.086	0.026	0.014	0.031	0.000000	0.000000	-1812.12	171.78
3	GUIDE	3802720	8.87	19662	0.014	-0.011	0.071	0.111	25.517286	2.465362	-1213.92	-1126.73
4	GUIDE	3805352	7.86	19609	-0.042	-0.079	0.066	0.110	25.543196	2.308020	-691.58	-1364.96
5	GUIDE	3806872	8.46	19661	0.047	0.056	0.060	0.096	26.148027	1.973453	1520.82	-228.75
6	GUIDE	4194920	8.64	19659	0.046	0.028	0.061	0.098	26.080477	2.615510	-534.48	856.11
7	GUIDE	4197368	7.75	19667	-0.066	0.009	0.053	0.087	25.471433	2.704386	-2020.28	-783.86

2.4 Star Slots

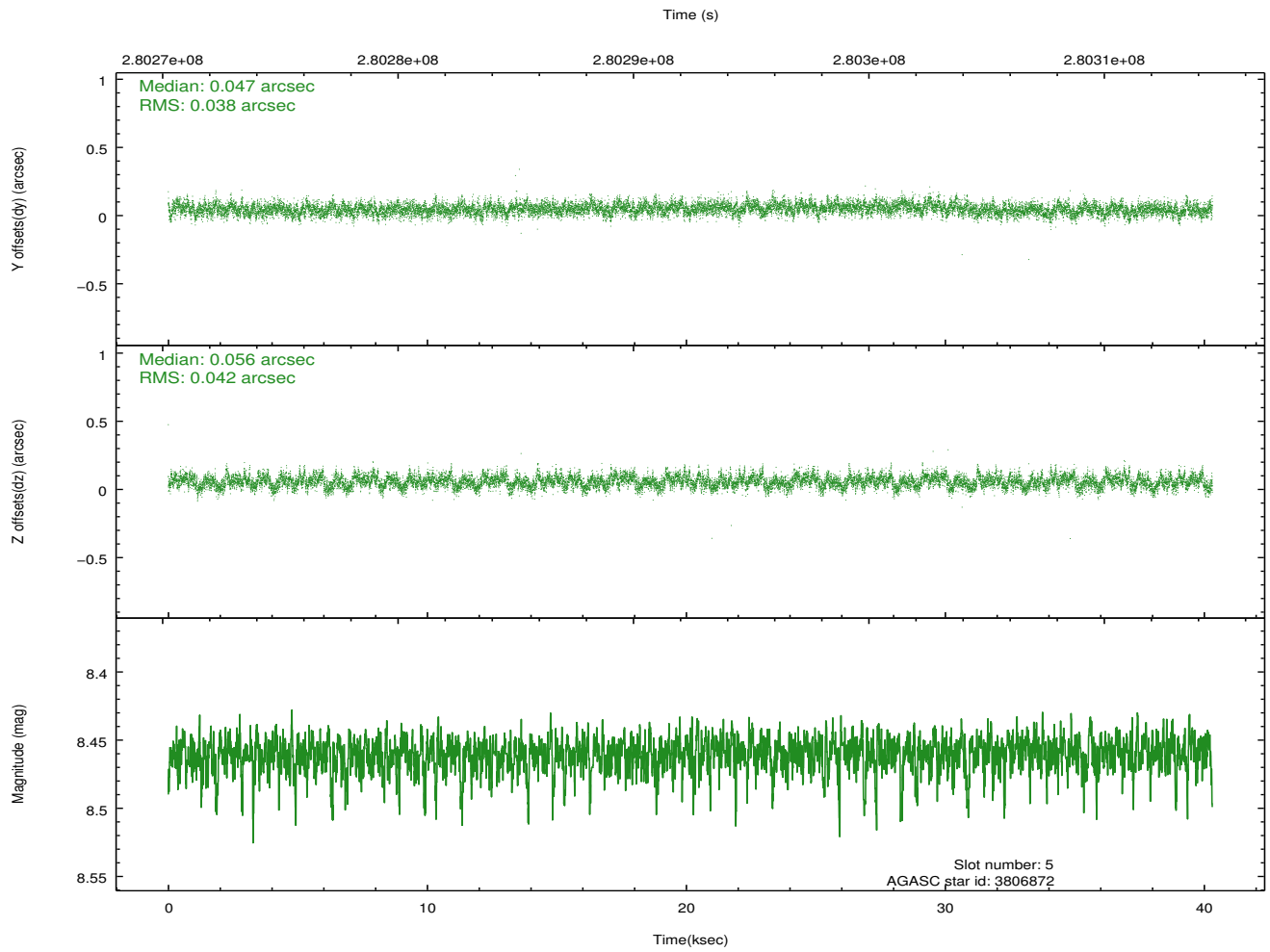
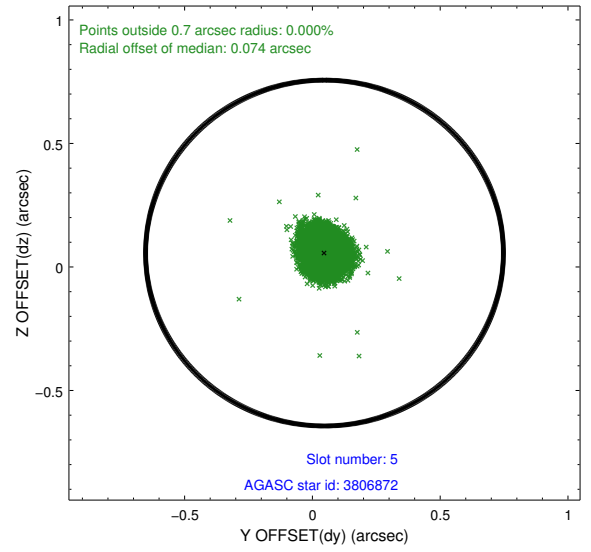
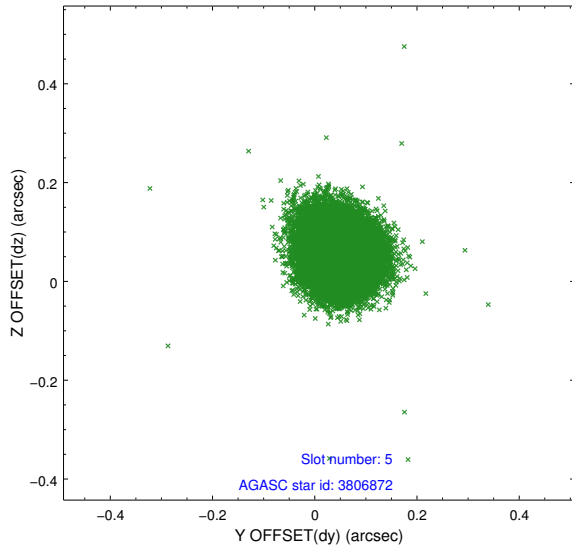
2.4.1 Slot 3



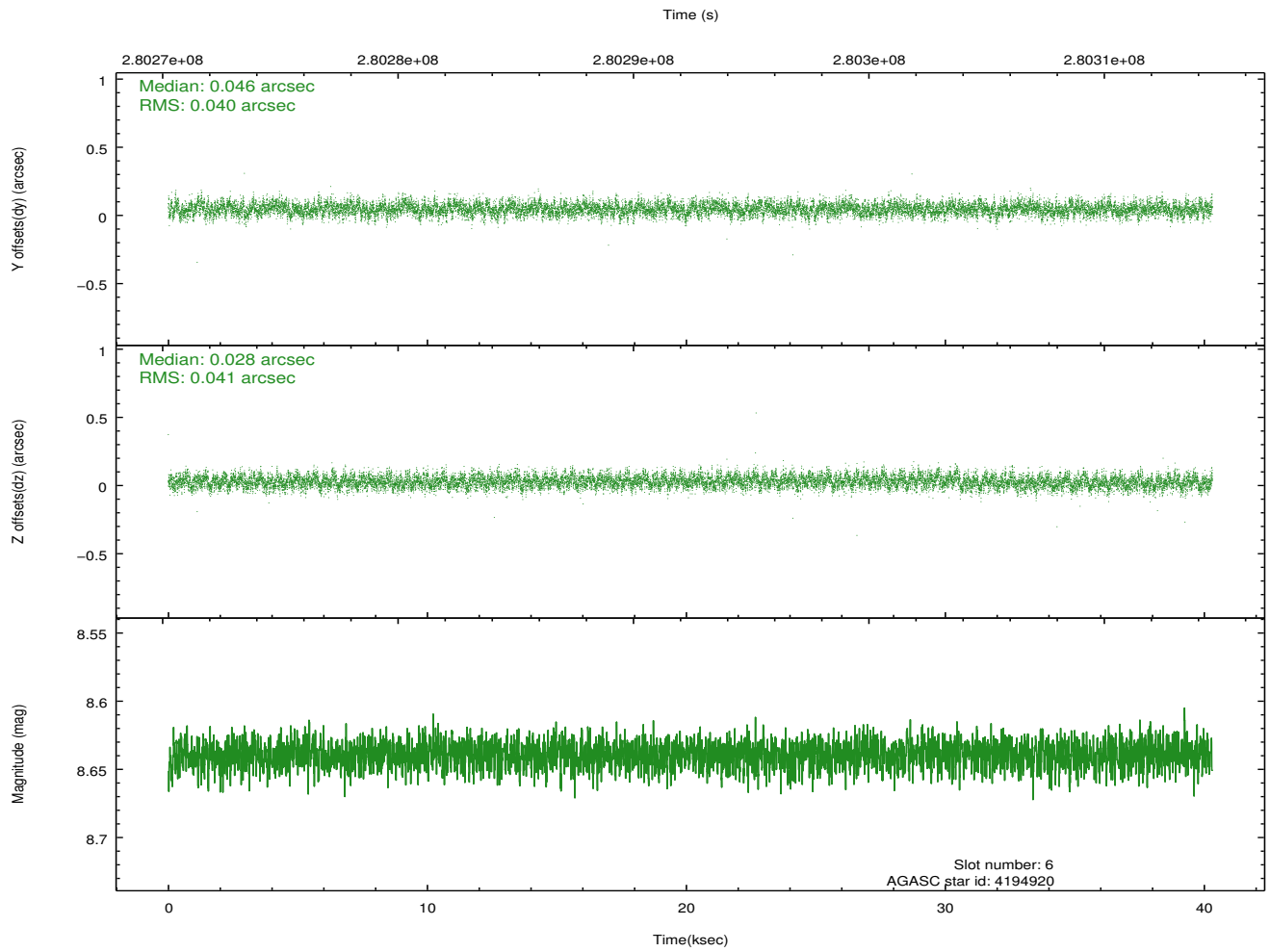
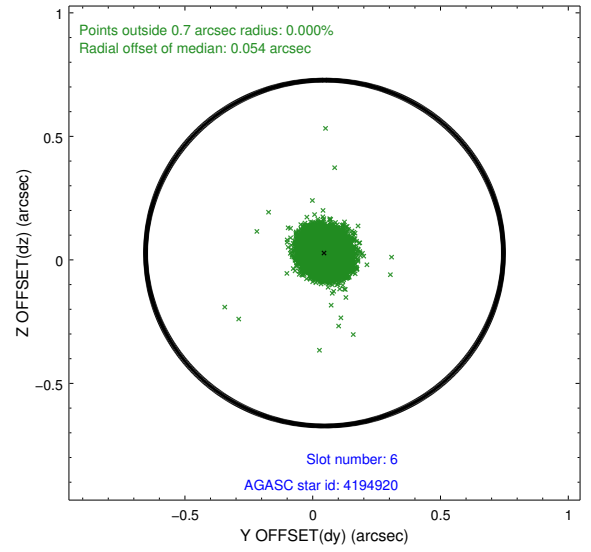
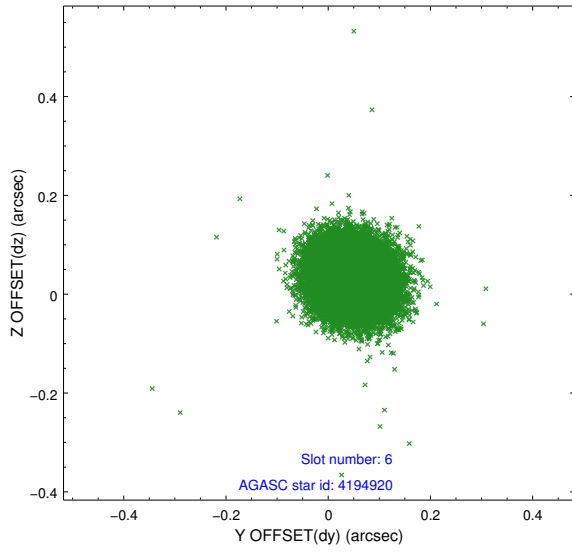
2.4.2 Slot 4



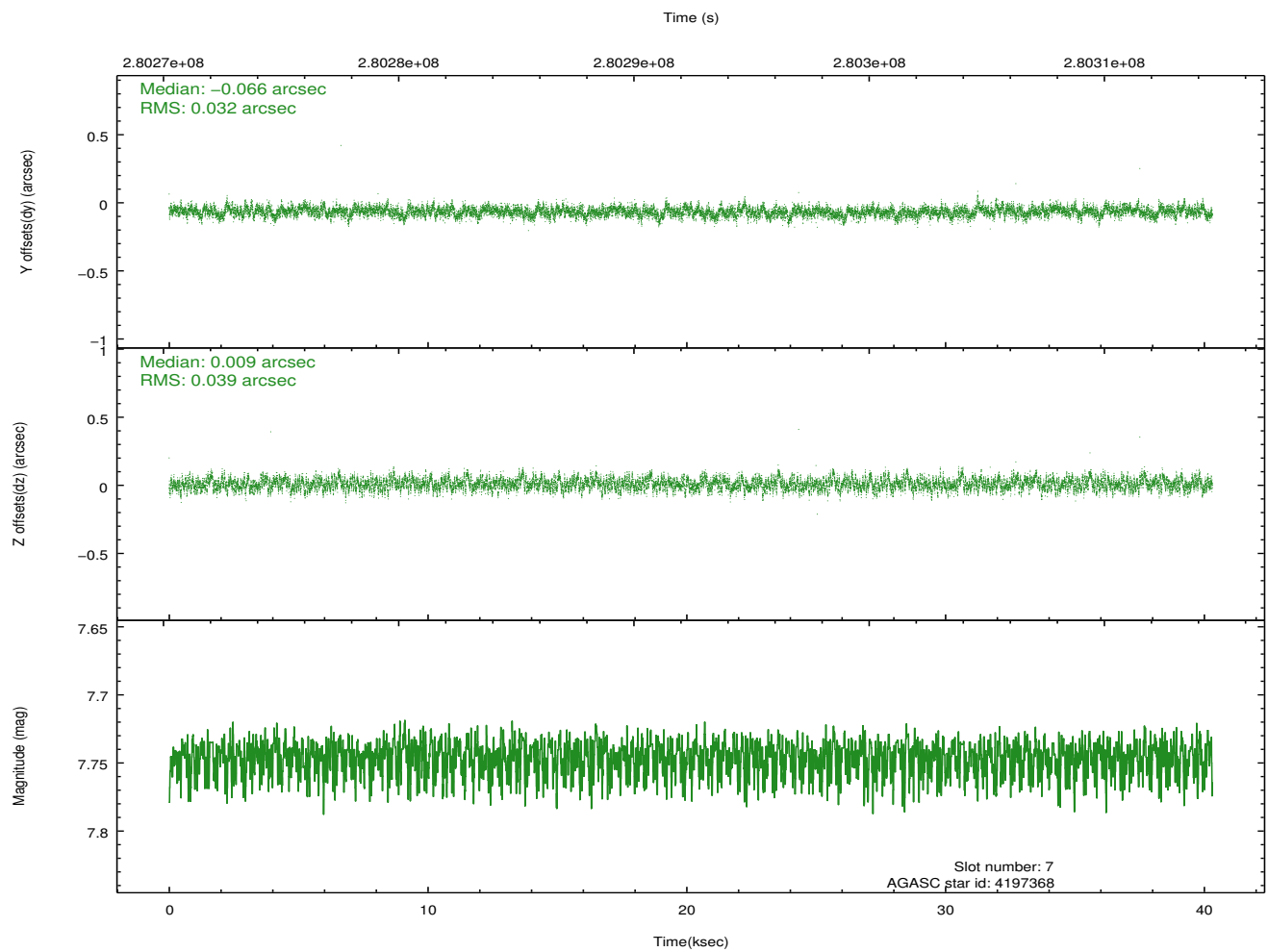
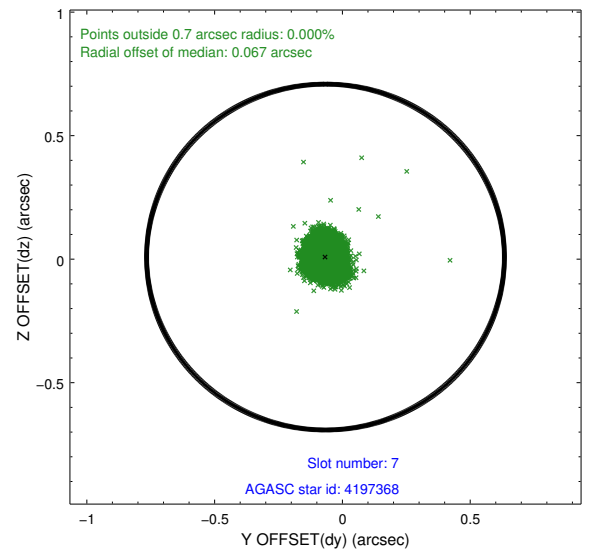
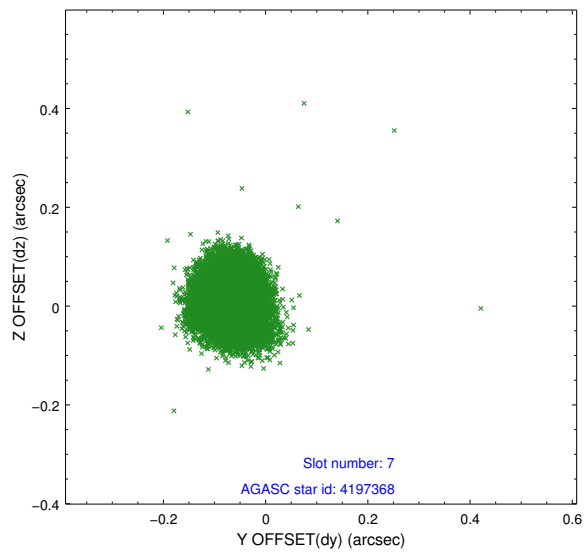
2.4.3 Slot 5



2.4.4 Slot 6

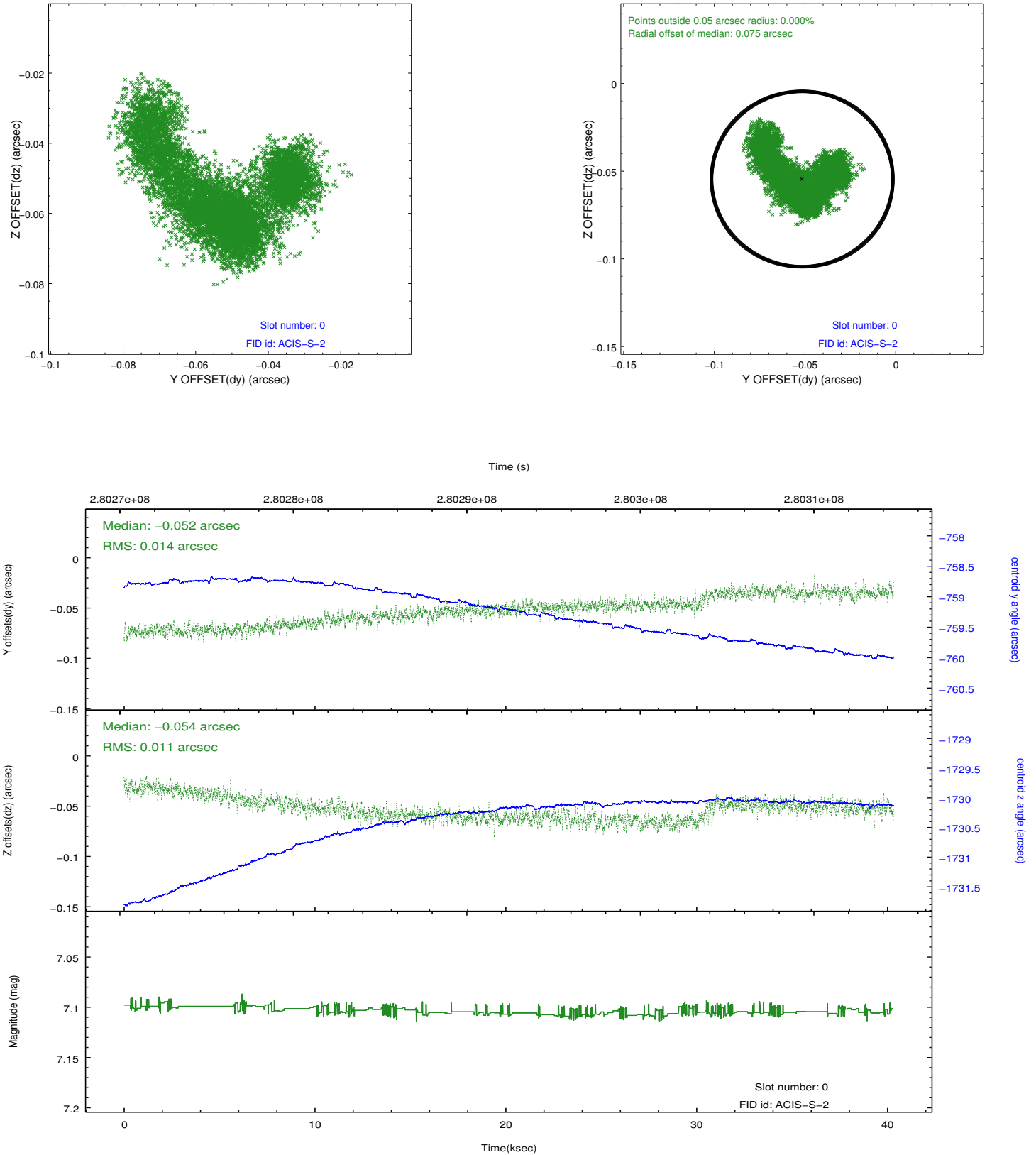


2.4.5 Slot 7

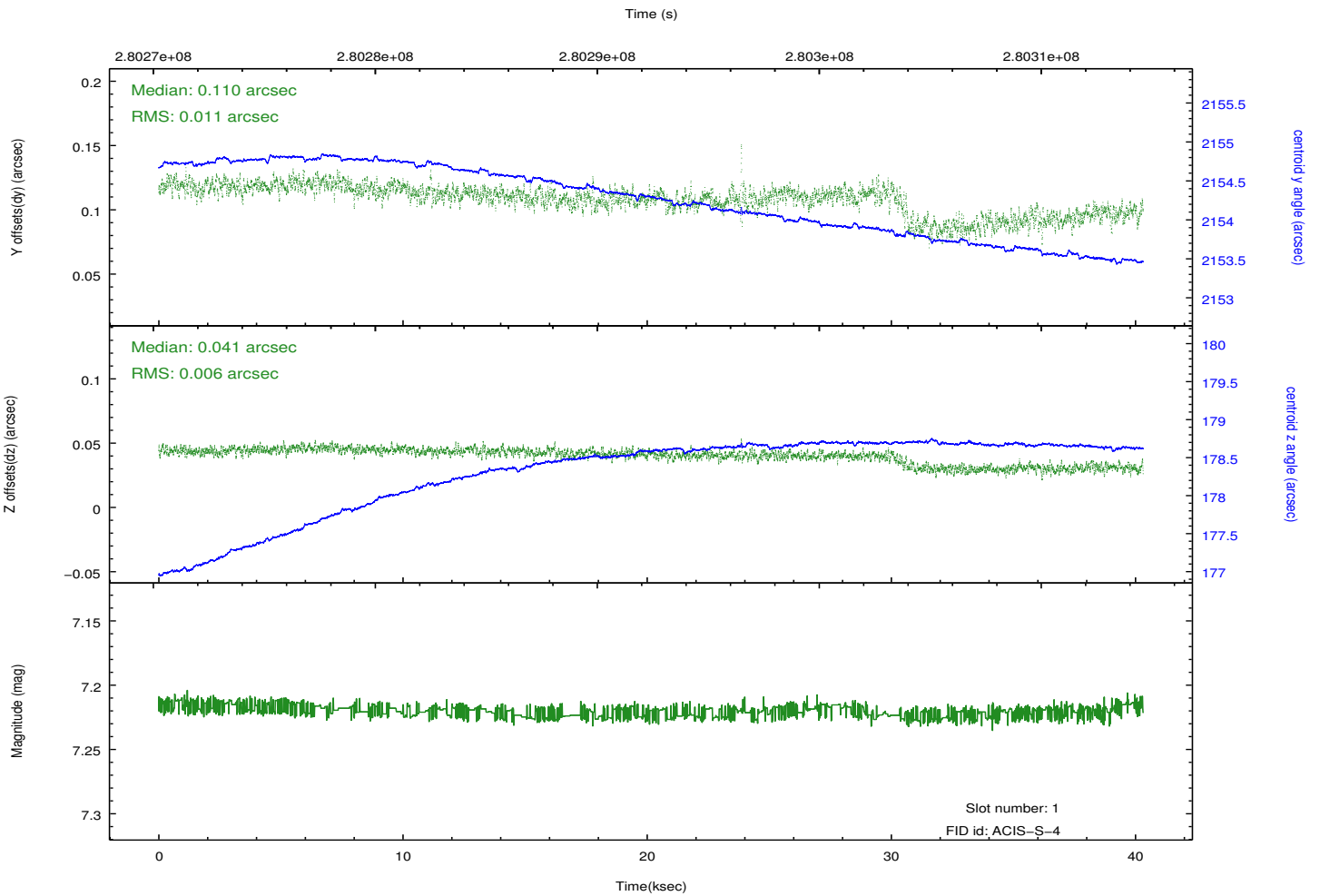
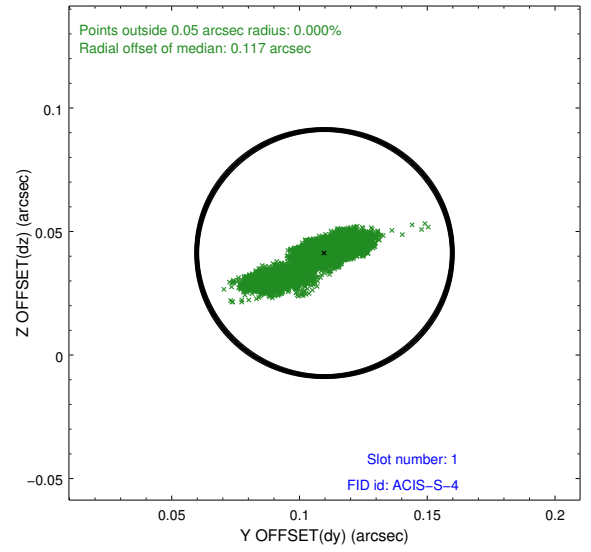
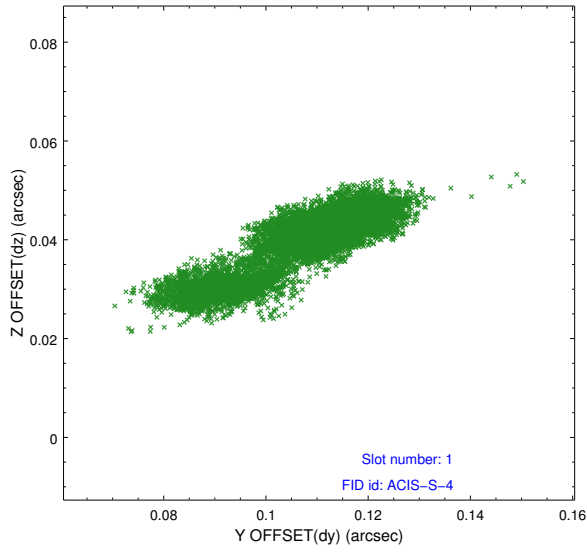


2.5 FID Slots

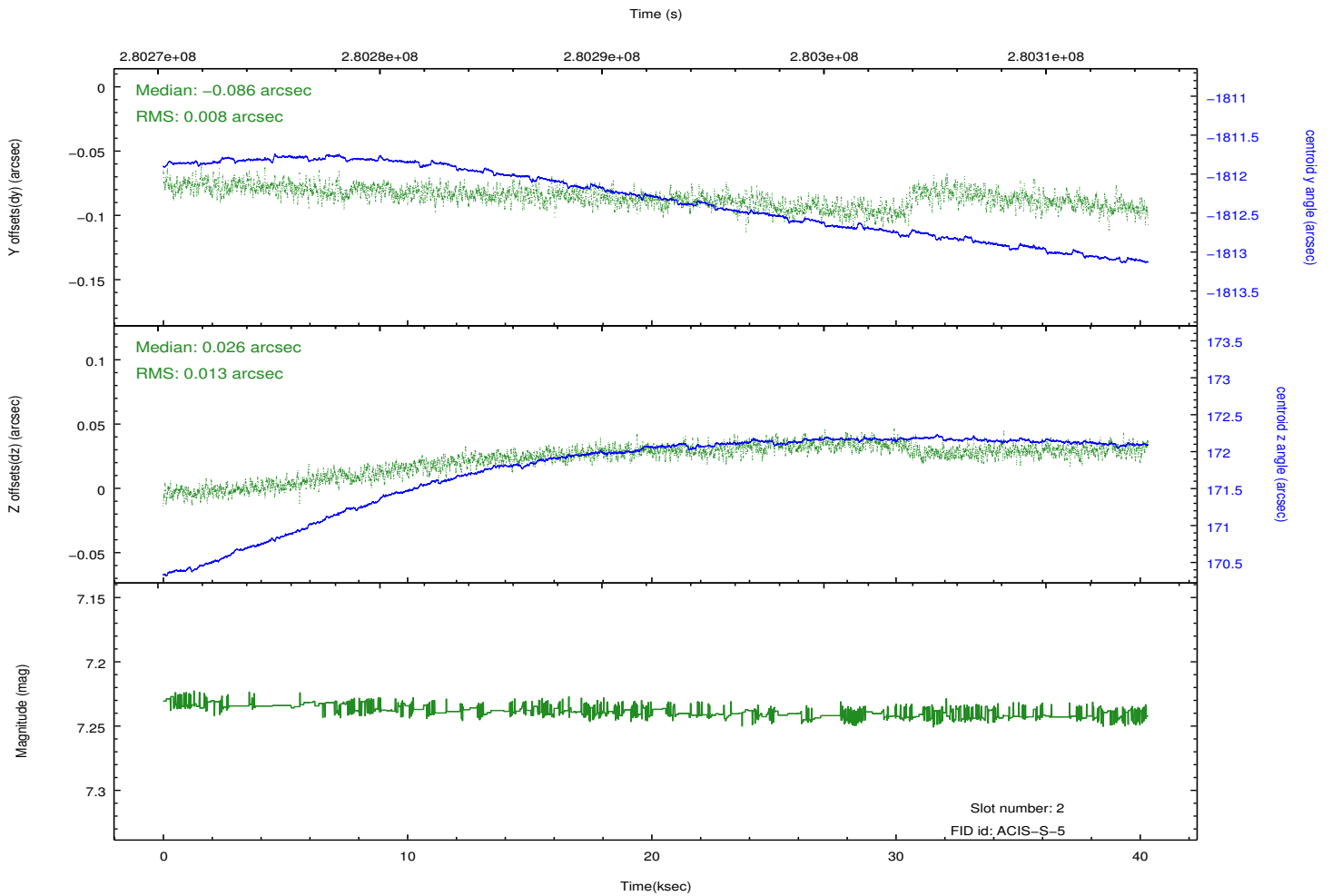
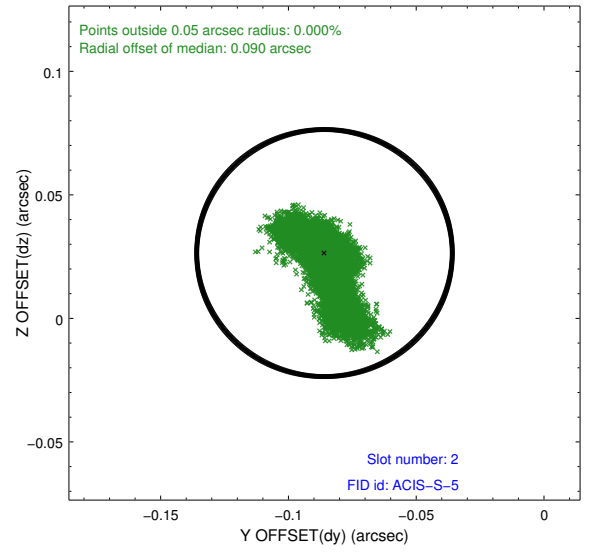
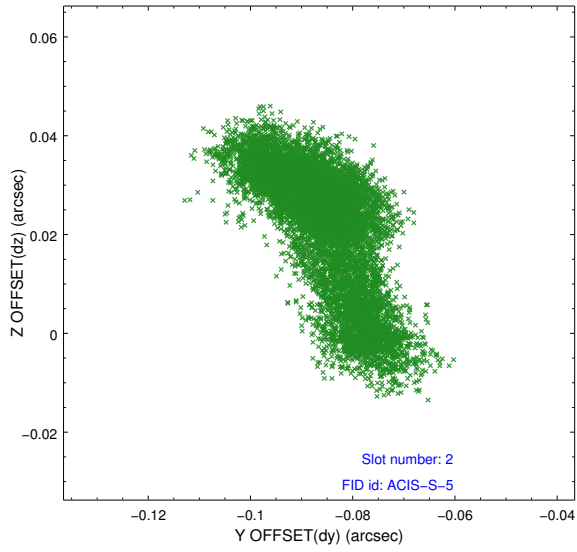
2.5.1 Slot 0



2.5.2 Slot 1



2.5.3 Slot 2



A Summary

A.1 Status

V&V Scientist	Beth Sundheim
V&V Date (YYYY-MM-DD)	2012.04.16
V&V Edition	1
V&V Disposition and Status	OK
V&V Charge Time	40.3164993

A.2 Comments