

V&V Reference Report

L2 ASCDS Version : 8.4.4

Observation 7755 - L2 Version 3
Chandra X-Ray Center

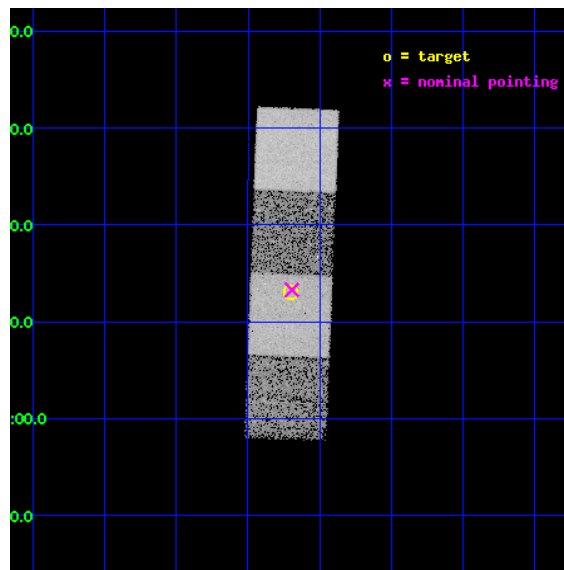
L2 Processing Date : Apr 22 2012

Contents

1	Front	2
2	OBI	3
2.1	OBI	3
2.1.1	Images	3
2.1.2	Bias	3
2.1.3	Parameters	4
2.1.4	Events	4
2.2	Compared Parameters	5
2.3	Aspect	6
2.4	Star Slots	9
2.4.1	Slot 3	9
2.4.2	Slot 4	10
2.4.3	Slot 5	11
2.4.4	Slot 6	12
2.4.5	Slot 7	13
2.5	FID Slots	14
2.5.1	Slot 0	14
2.5.2	Slot 1	15
2.5.3	Slot 2	16
A	Summary	17
A.1	Status	17
A.2	Comments	17

1 Front

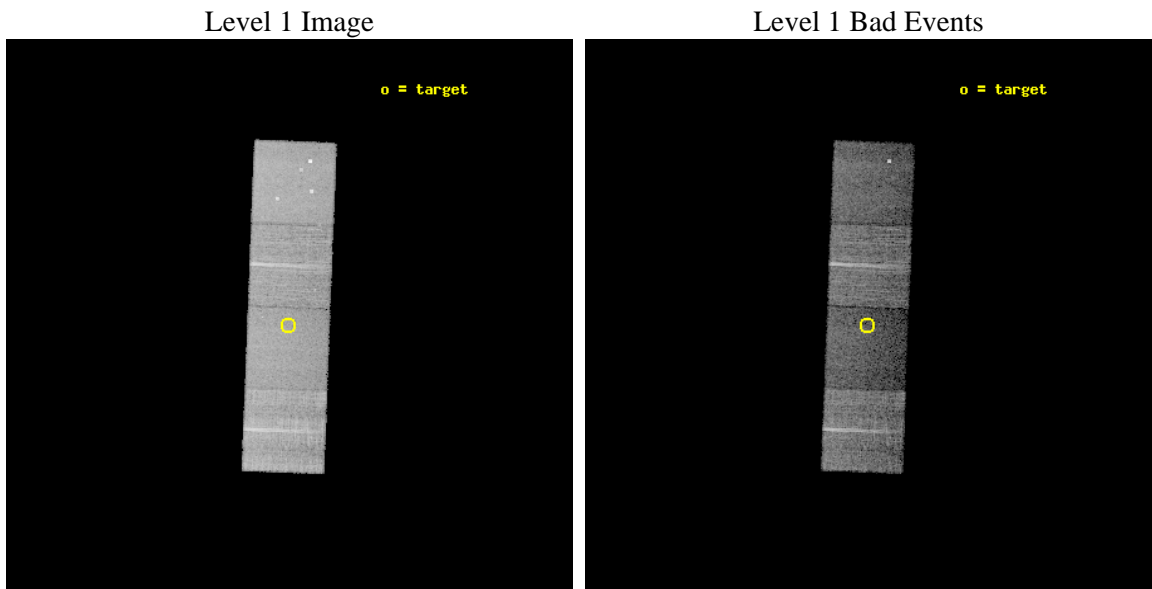
seq_num	701423	Sequence number
obs_id	7755	Observation id
title	Probing heavy obscuration in optically selected Type 2 quasar candidates	Proposal title
observer	Dr Cristian Vignali	Principal investigator
object	SDSS J144642.29+011303.0	Source name
dtcycle	0	
cycle	P	events from which exps? Prim/Second/Both
ra_targ	221.67625	Observer's specified target RA [deg]
dec_targ	1.2175	Observer's specified target Dec [deg]
ra_nom	221.67351229681	Nominal RA [deg]
dec_nom	1.221490007096	Nominal Dec [deg]
roll_nom	92.174210587939	Nominal Roll [deg]
revision	3	Processing version of data
ontime	10183.500078321	Sum of GTIs [s]
livetime	10050.445152814	Livetime [s]
ontime5	10183.500078321	Sum of GTIs [s]
ontime6	10183.500078321	Sum of GTIs [s]
ontime7	10183.500078321	Sum of GTIs [s]
ontime8	10183.500078321	Sum of GTIs [s]
l2events	94748	Number of level 2 events



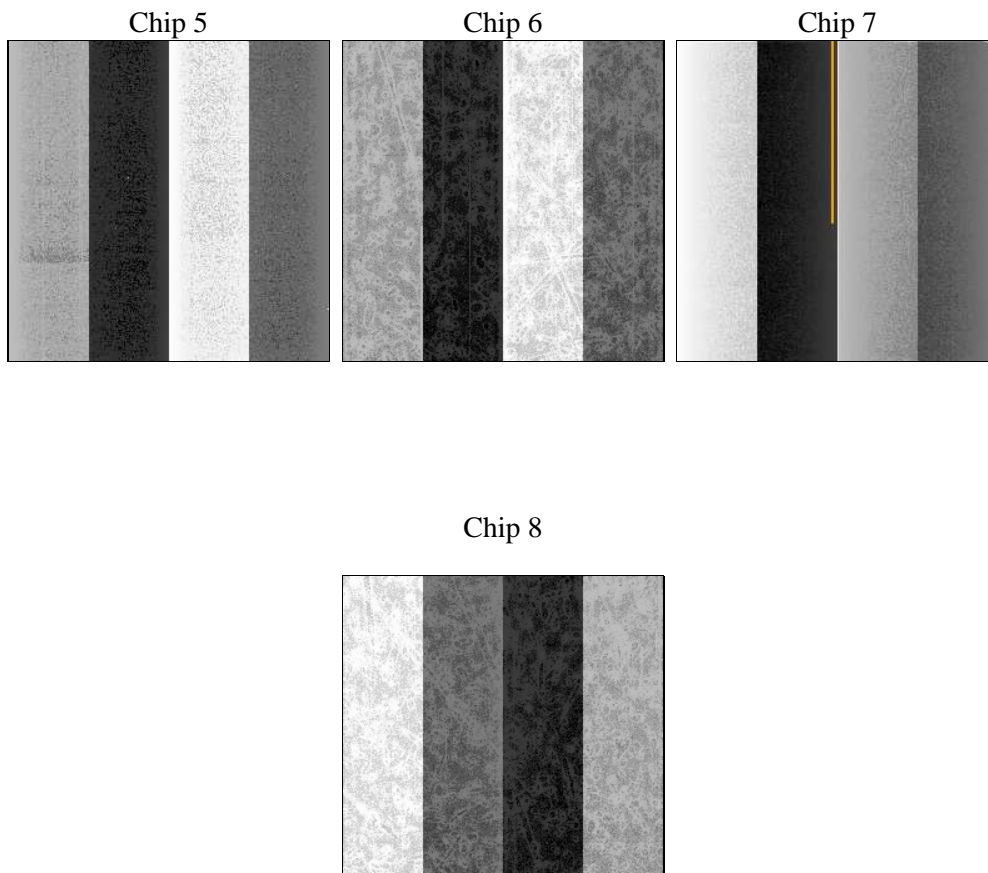
2 OBI

2.1 OBI

2.1.1 Images



2.1.2 Bias



2.1.3 Parameters

obi_num	0	Obi number	sched_exp_time	10000.000000	[s] Scheduled observation exposure time
ascdsver	8.4.4	Processing system revision	ontime	10183.500078321	Sum of GTIs [s]
caldbver	4.4.9	 	ontime5	10183.500078321	Sum of GTIs [s]
date	2012-04-22T04:22:32	Date and time of file creation	ontime6	10183.500078321	Sum of GTIs [s]
revision	3	Processing version of data	ontime7	10183.500078321	Sum of GTIs [s]
			ontime8	10183.500078321	Sum of GTIs [s]
			l1events	346841	Number of level 1 events

2.1.4 Events

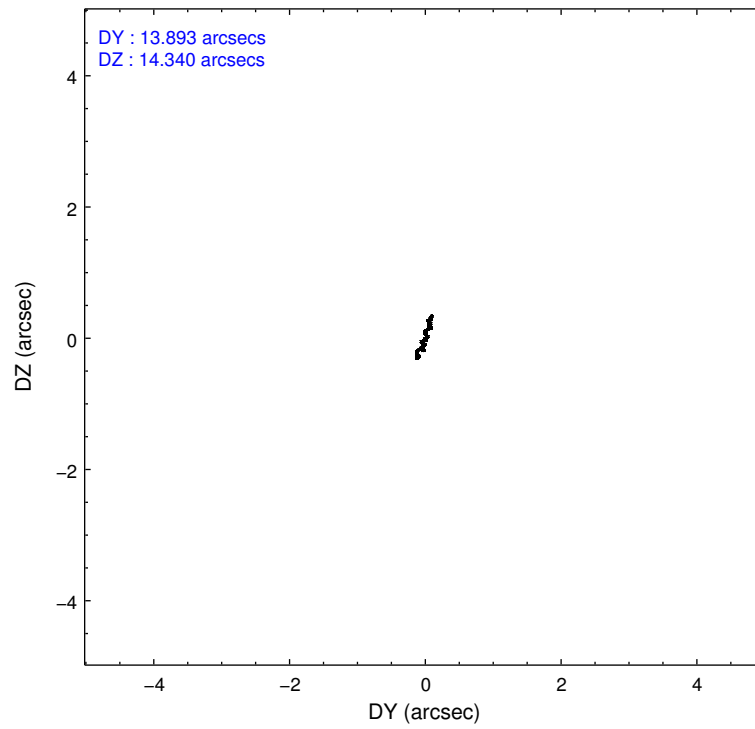
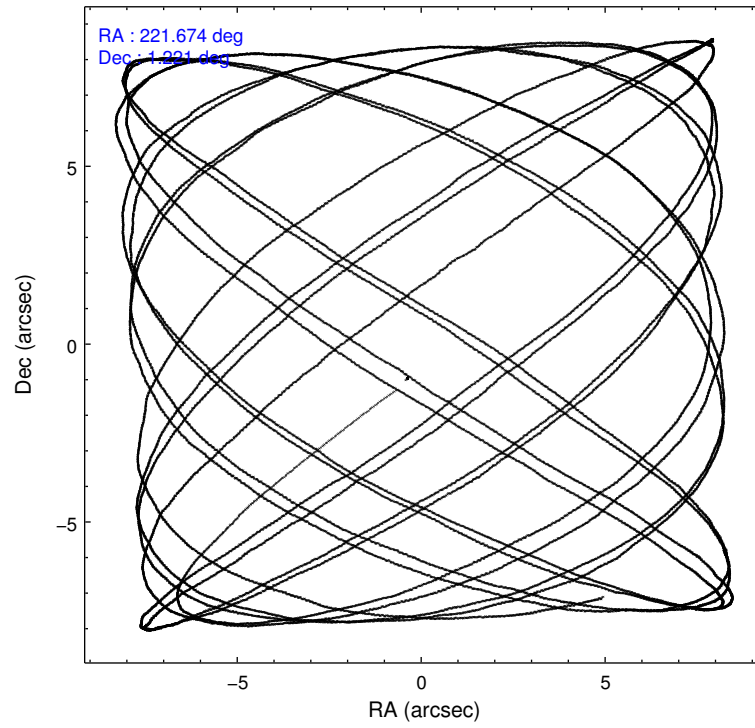
	ccd 5	ccd 6	ccd 7	ccd 8
level 1 events	97948	77663	73225	98005
rejected events	47268	69800	37587	73695
rejected %	48%	89%	51%	75%

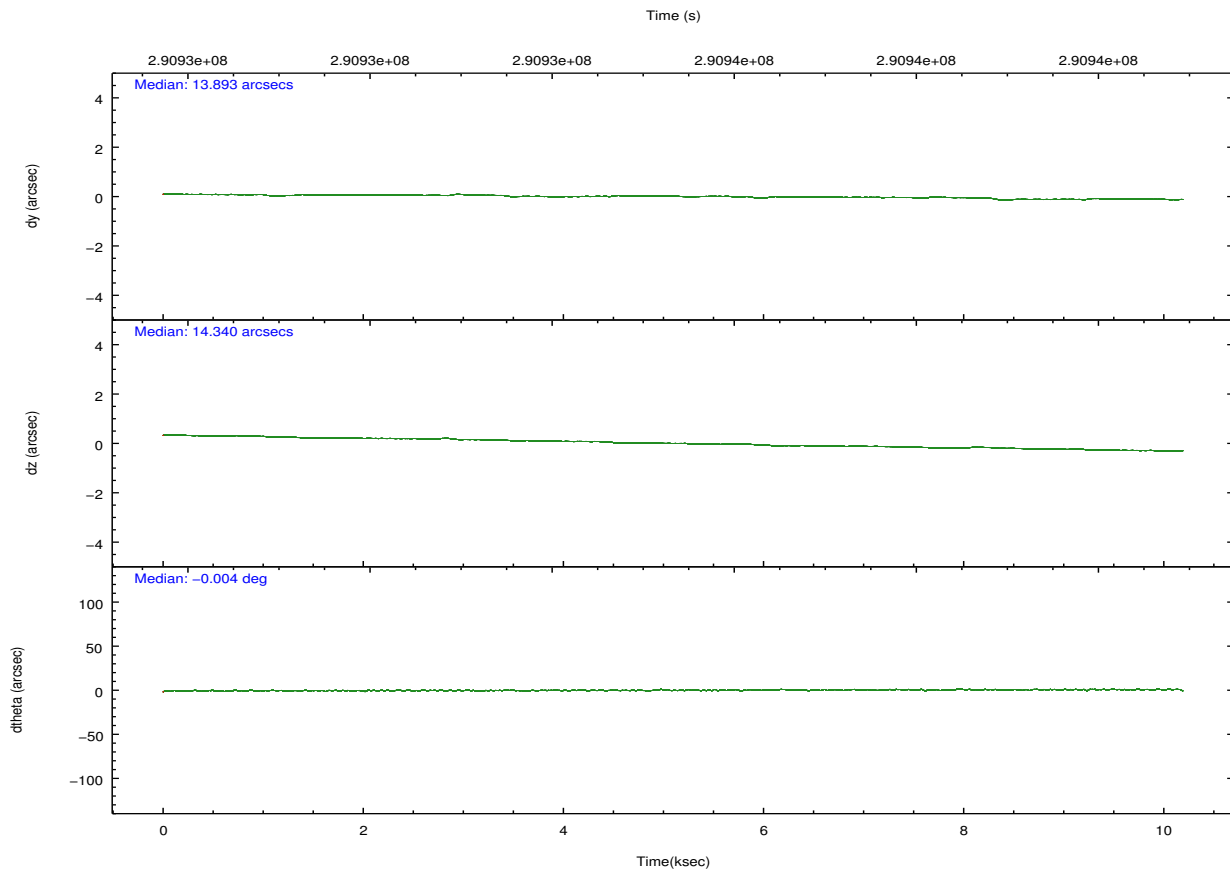
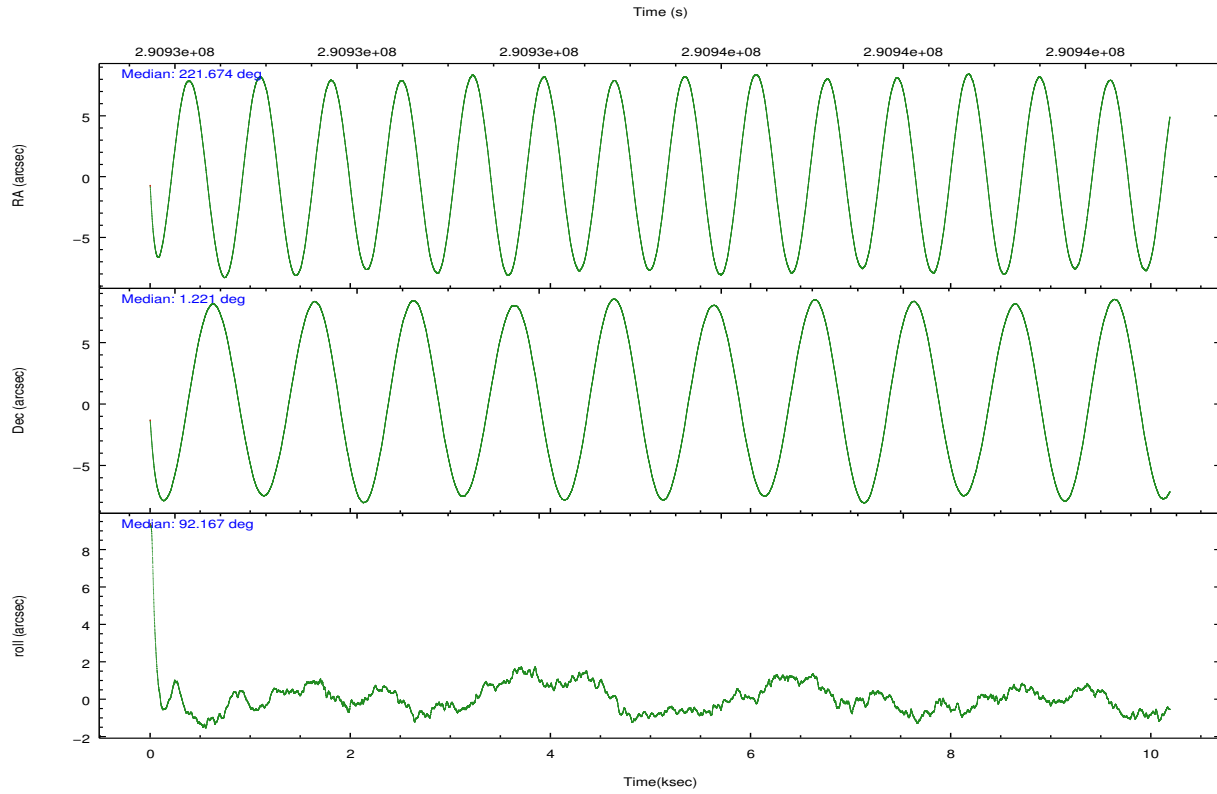
	ccd 5	ccd 6	ccd 7	ccd 8
grade 0 events	6035	2991	3695	6766
	6%	3%	5%	6%
grade 1 events	205	37	93	70
	0%	0%	0%	0%
grade 2 events	15724	1726	7694	5758
	16%	2%	10%	5%
grade 3 events	2297	841	3493	2888
	2%	1%	4%	2%
grade 4 events	2144	850	3488	2701
	2%	1%	4%	2%
grade 5 events	8321	2530	7767	3993
	8%	3%	10%	4%
grade 6 events	25344	1572	17846	6619
	25%	2%	24%	6%
grade 7 events	37878	67116	29149	69210
	38%	86%	39%	70%

2.2 Compared Parameters

Parameter	Planned	Actual	Parameter	Planned	Actual
Instrument	ACIS	ACIS	Obspar format version number	7	7
Detector	ACIS-5678	ACIS-5678	Obspar file type	PREDICTED	ACTUAL
Grating	NONE	NONE	Obspar update status	NONE	UPDATED
Data mode	VFAINT	VFAINT	Number of optional ACIS chips dropped	0	0
Observation mode	POINTING	POINTING	On-chip summing requested	N	N
[deg] Pointing RA	221.688430	221.6735122968087	Subarray requested	NONE	NONE
[deg] Pointing Dec	1.198584	1.221490007095952	Alternating exposures requested	N	N
[deg] Pointing Roll	92.017253	92.17421058793896	[s] Primary exposure time	0.000000	3.1
[mm] SIM focus pos	-0.684267	-0.6828225247311905			
[mm] SIM defocus	0	0.001444936568705701			
[mm] SIM translation stage pos	-190.132523	-190.1425803651734			
[mm] SIM translation stage offset	0	0.01005778216563158			
[s] Observation start time (MET)	290930431.184000	290929411.30922			
Observation start date	2007-03-22T05:59:26	2007-03-22T05:43:31			
[s] Observation end time (MET)	290940431.184000	290941255.69729			
Observation end date	2007-03-22T08:46:06	2007-03-22T09:00:55			
Read mode	TIMED	TIMED			

2.3 Aspect



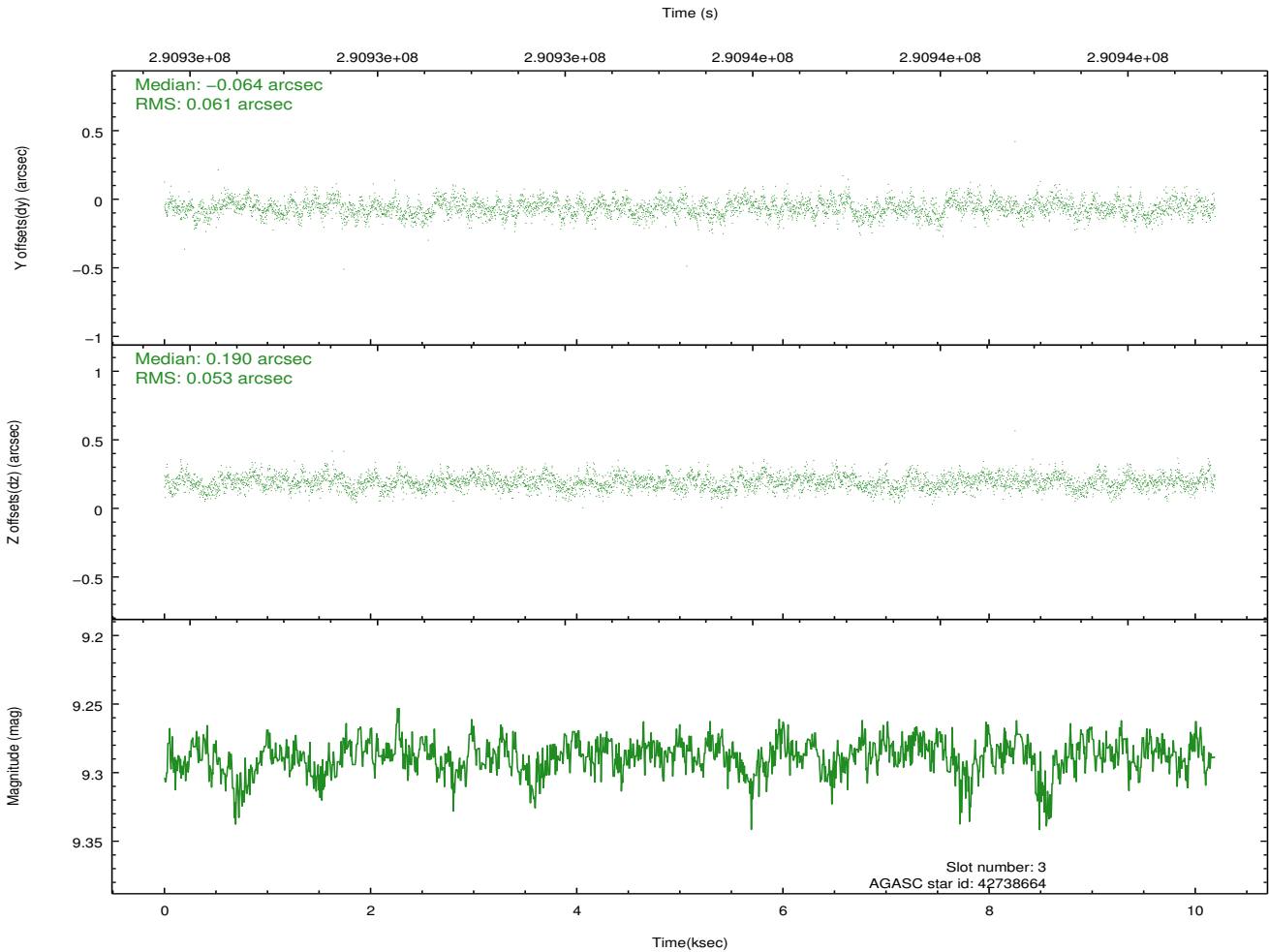
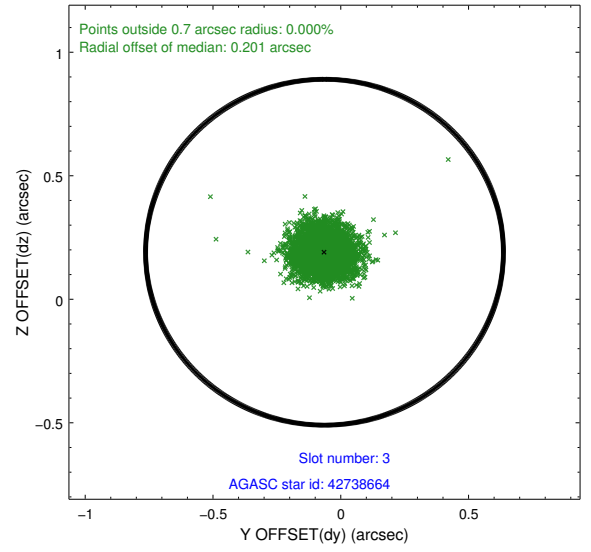
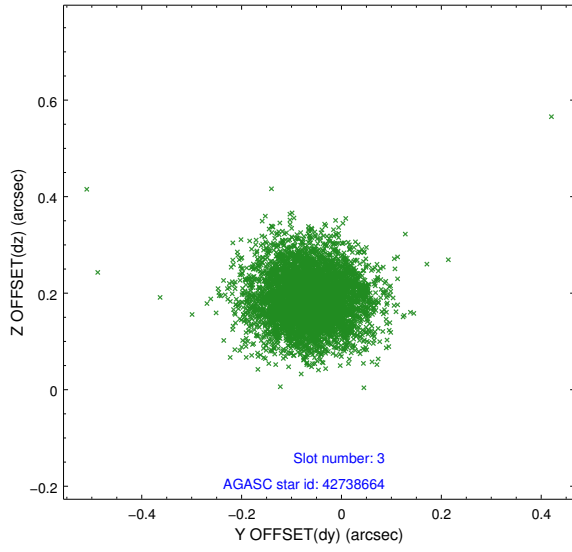


Slot Statistics

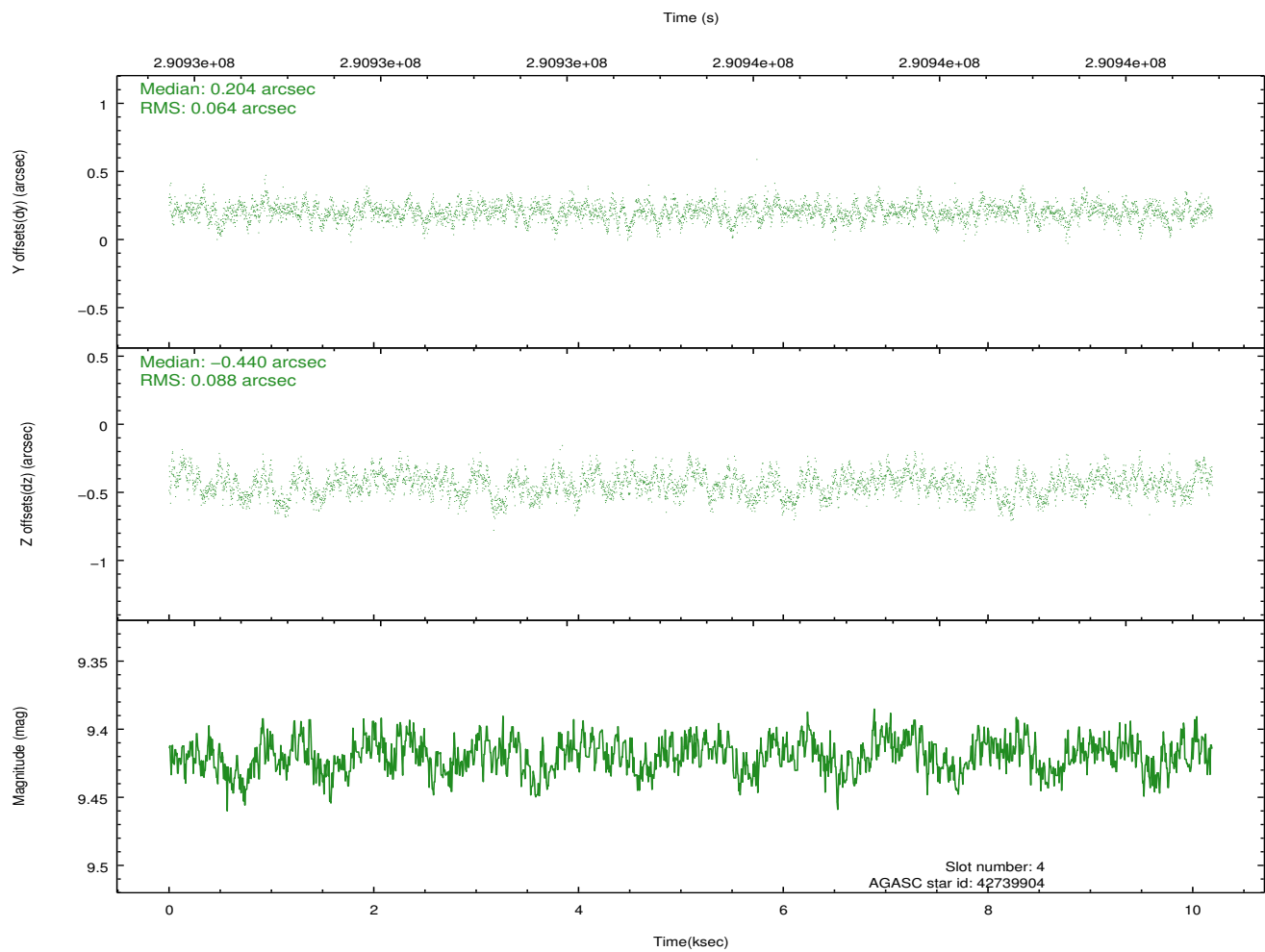
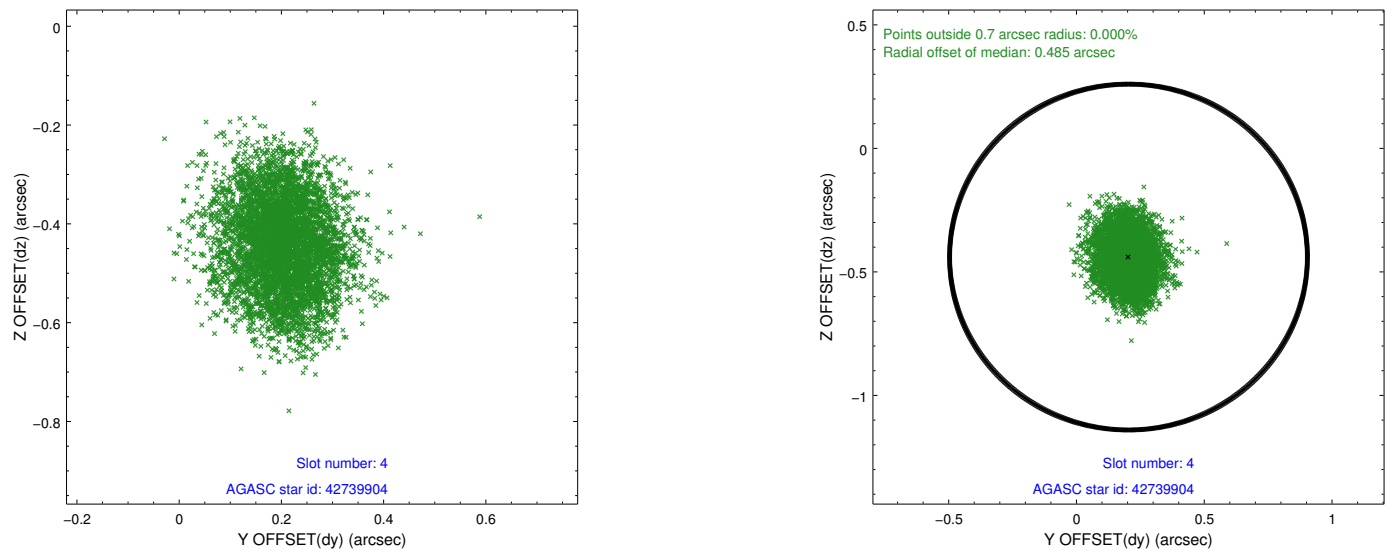
slot	status	id	mag	n_pts	med_dy	med_dz	dr1	dr2	ra	dec	mean_y	mean_z
0	FID	ACIS-S-2	7.09	2486	-0.066	-0.061	0.010	0.016	0.000000	0.000000	-766.88	-1735.72
1	FID	ACIS-S-4	7.19	2485	0.212	0.048	0.008	0.014	0.000000	0.000000	2146.42	172.34
2	FID	ACIS-S-5	7.22	2486	-0.177	0.022	0.009	0.014	0.000000	0.000000	-1819.18	166.56
3	GUIDE	42738664	9.29	4969	-0.064	0.190	0.085	0.137	221.798995	1.603981	1444.88	-448.72
4	GUIDE	42739904	9.42	4963	0.204	-0.440	0.118	0.187	221.063801	1.147543	-103.70	2252.65
5	GUIDE	42739912	9.07	4966	-0.222	0.171	0.099	0.159	221.944411	1.831113	2243.39	-999.50
6	GUIDE	42740064	9.37	4965	0.070	0.157	0.090	0.148	222.016092	0.872392	-1213.94	-1137.55
7	GUIDE	42740888	6.15	4971	0.014	-0.078	0.087	0.135	221.375855	0.717272	-1692.09	1185.20

2.4 Star Slots

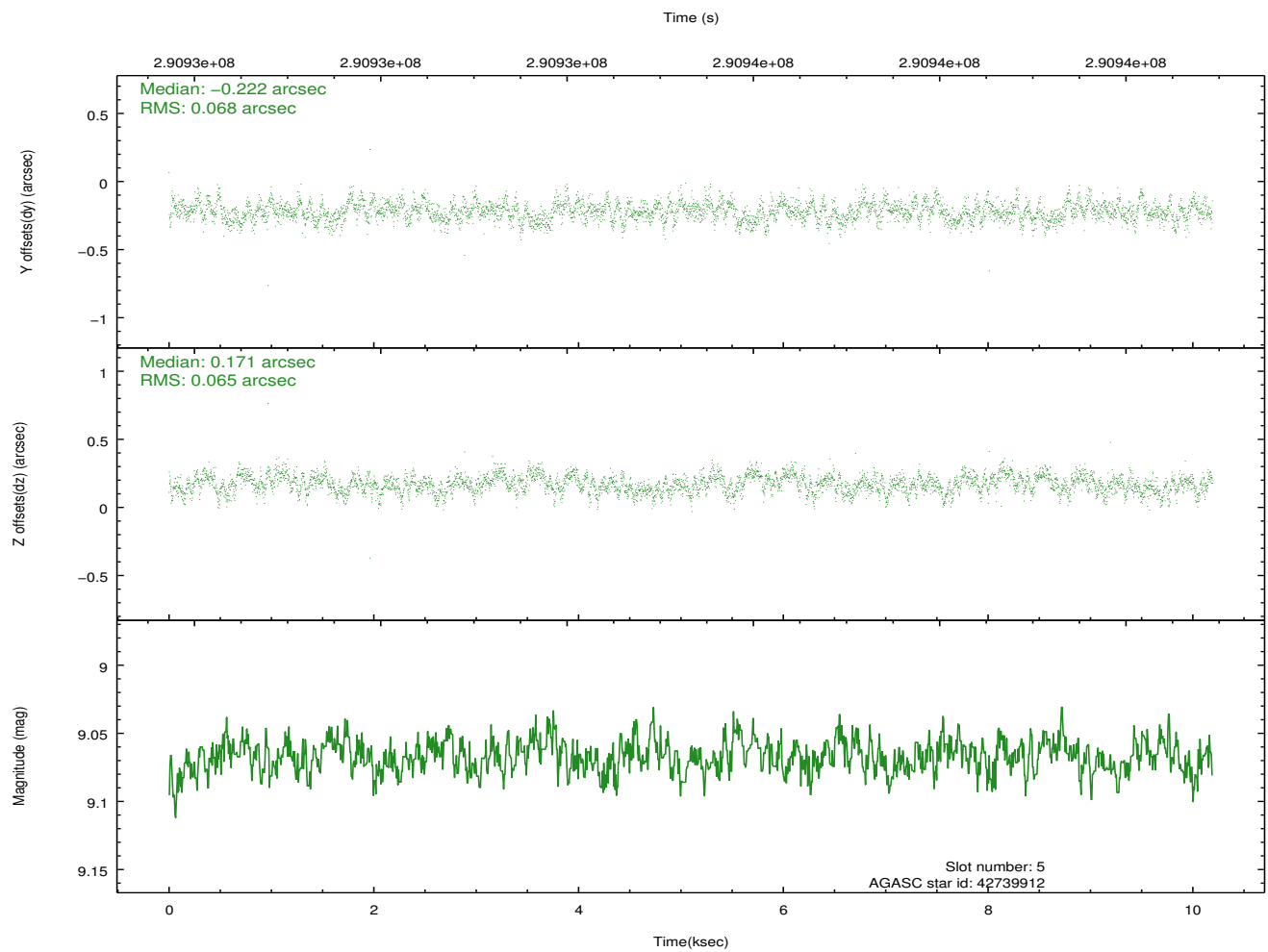
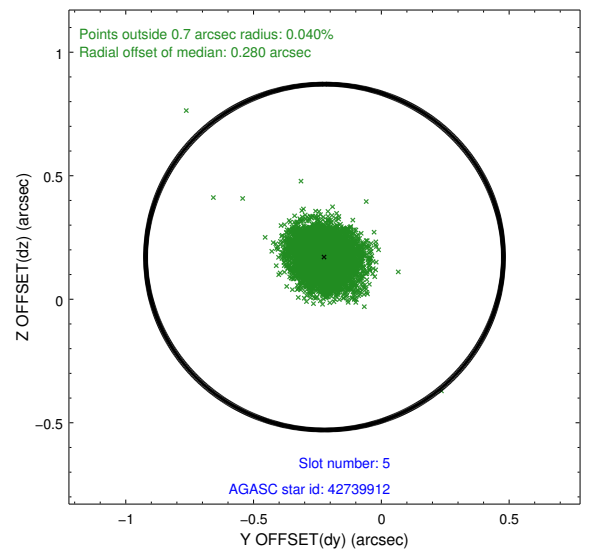
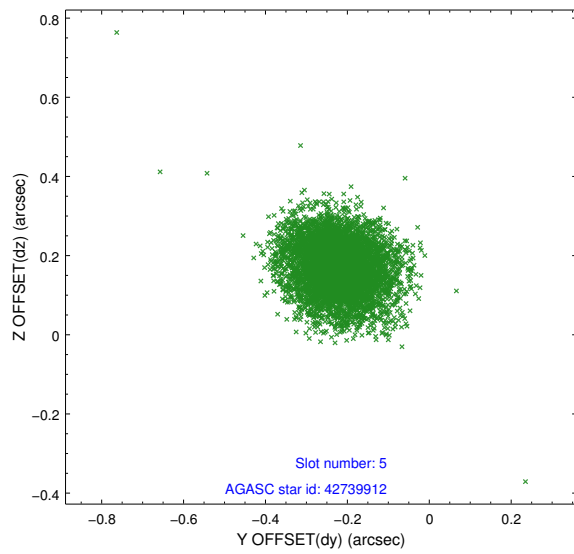
2.4.1 Slot 3



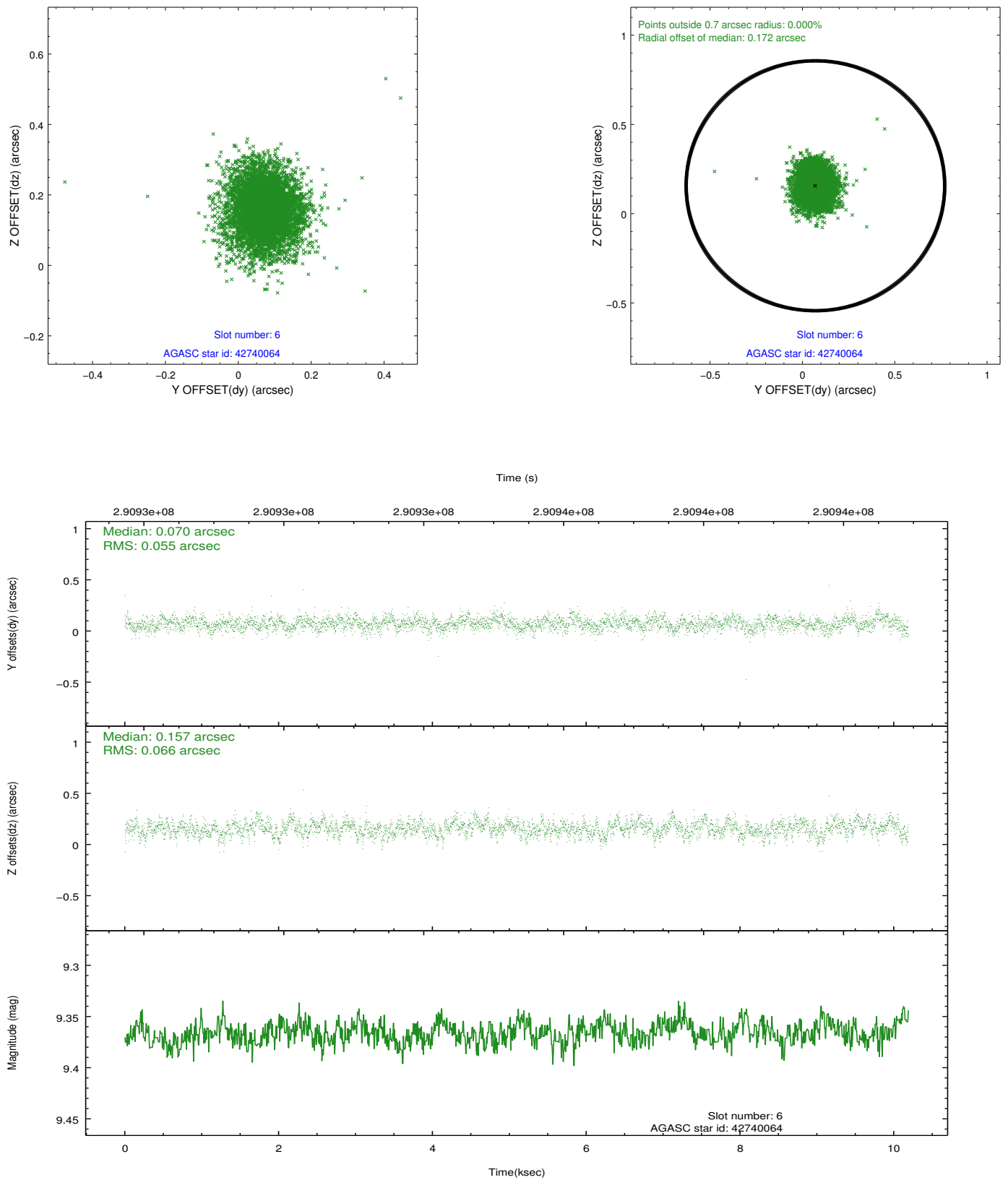
2.4.2 Slot 4



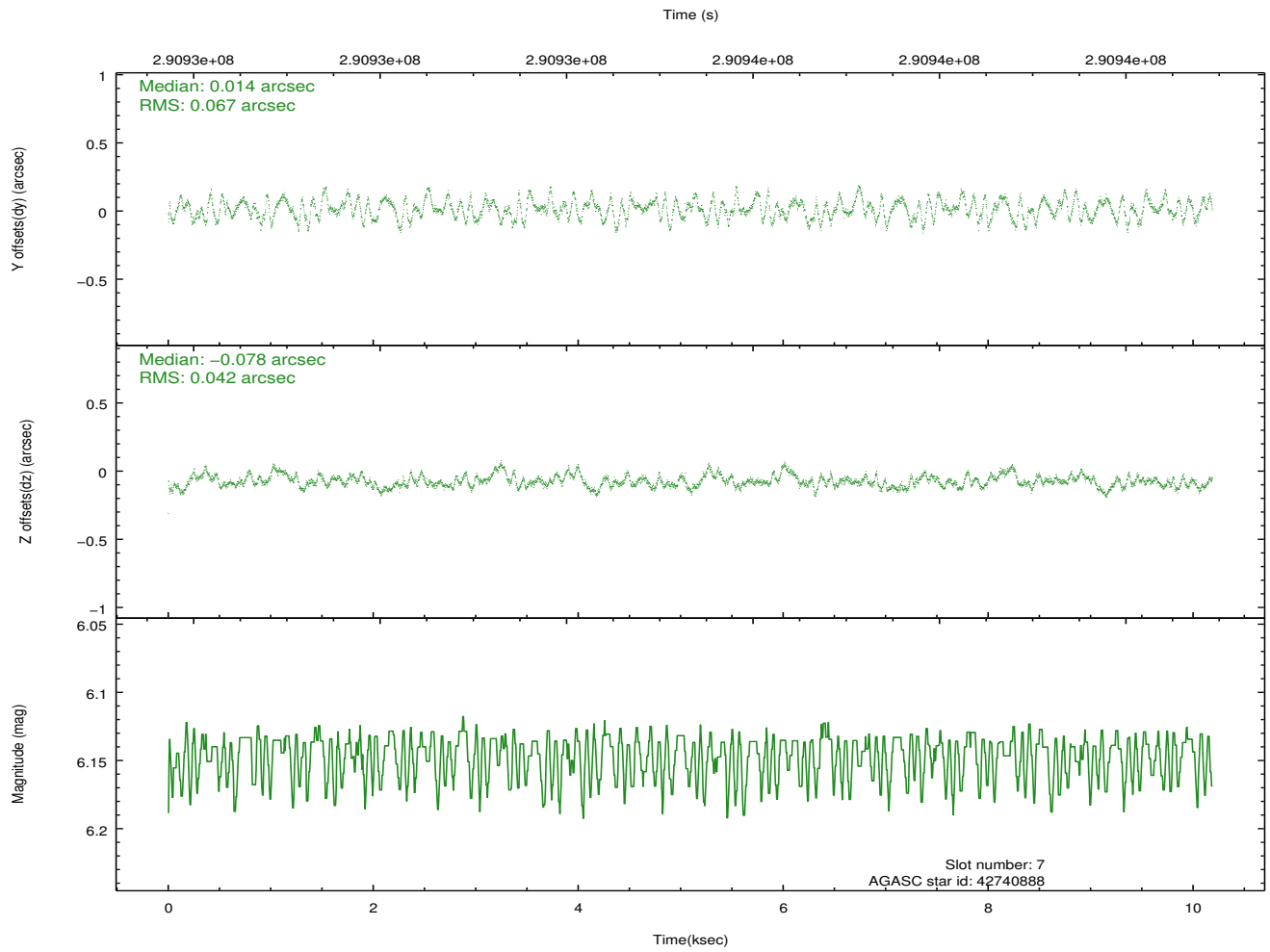
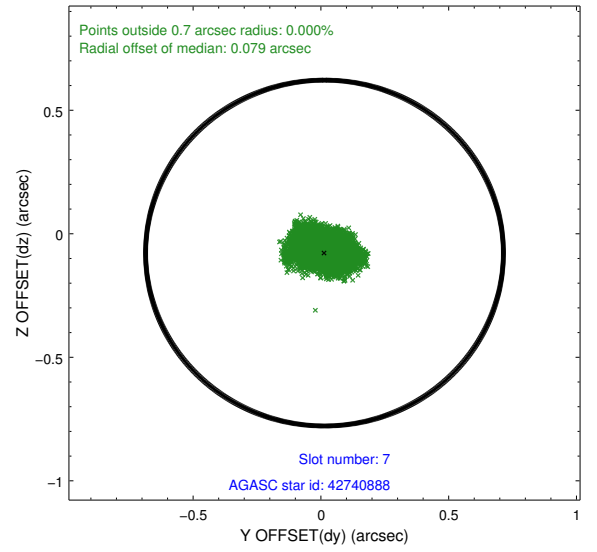
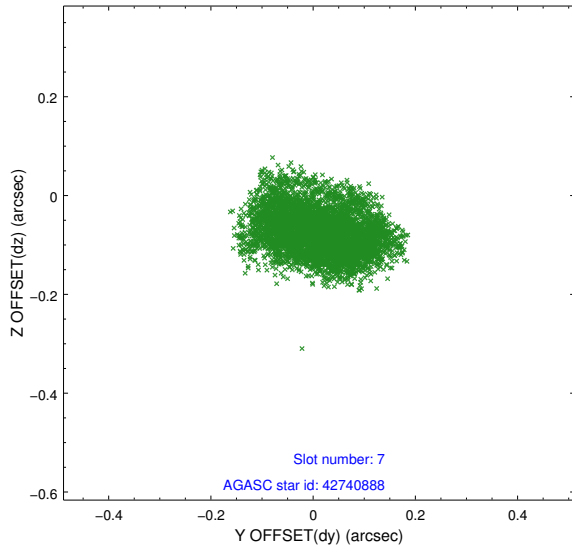
2.4.3 Slot 5



2.4.4 Slot 6

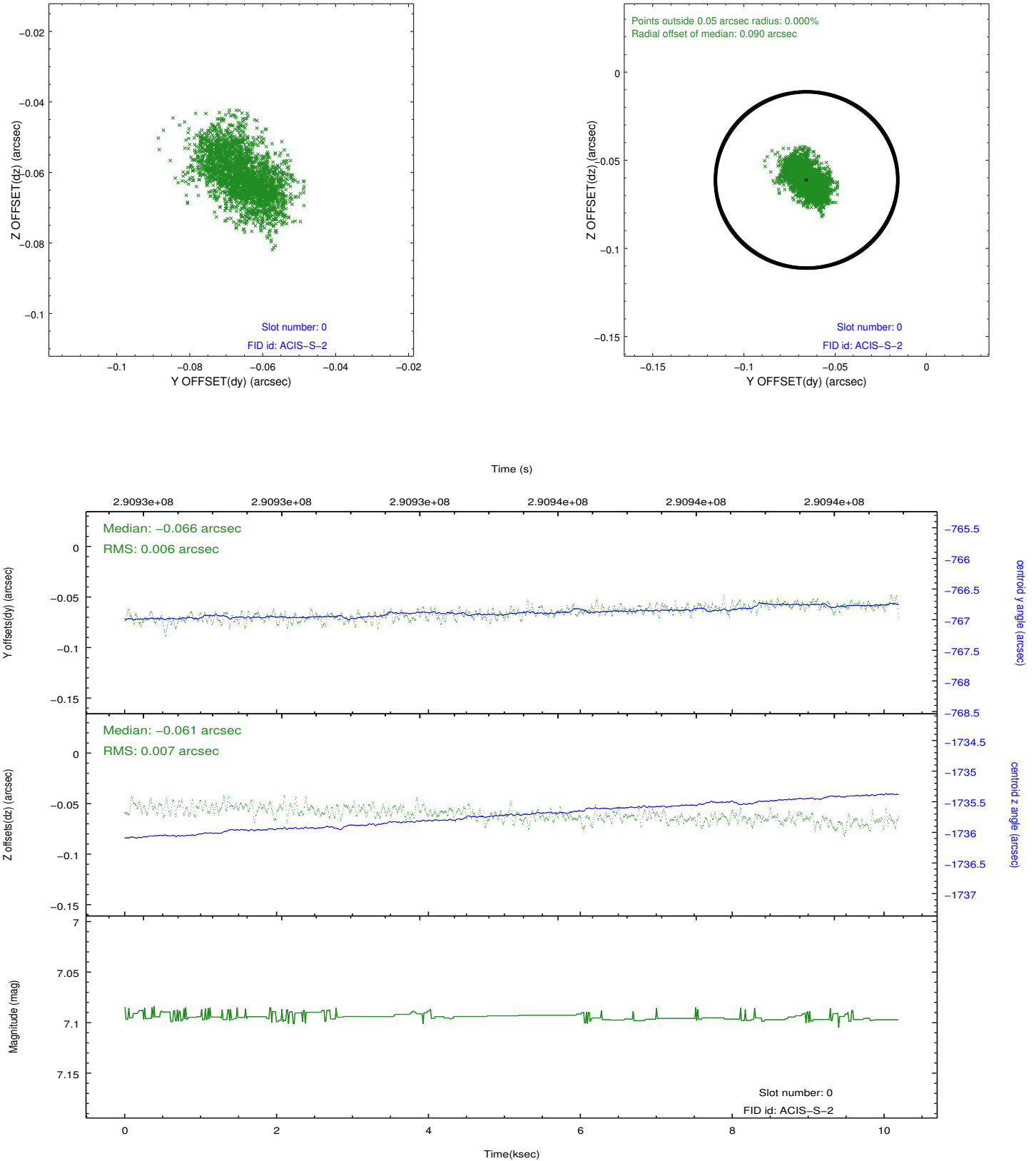


2.4.5 Slot 7

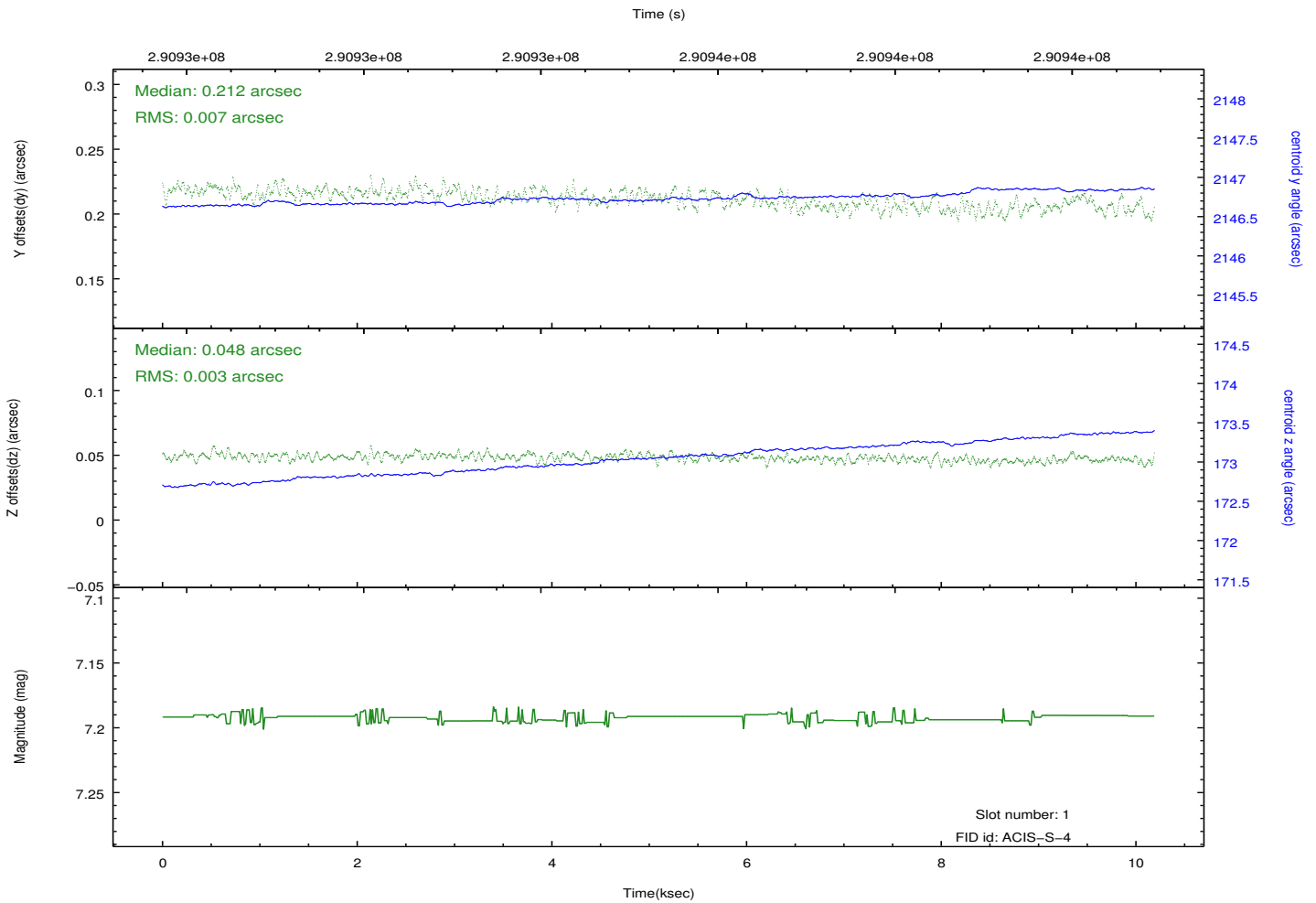
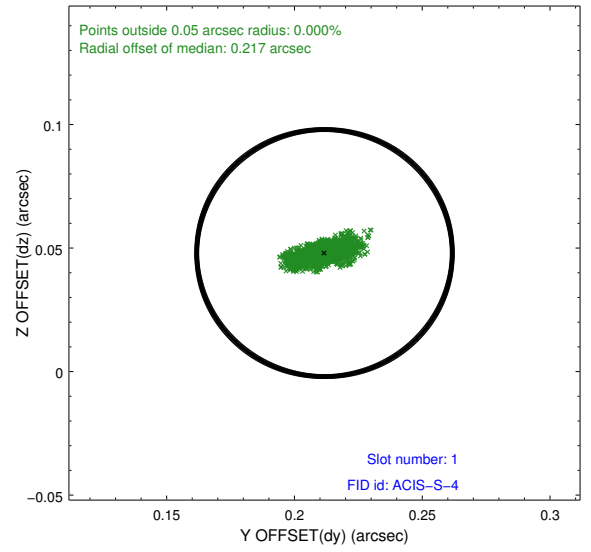
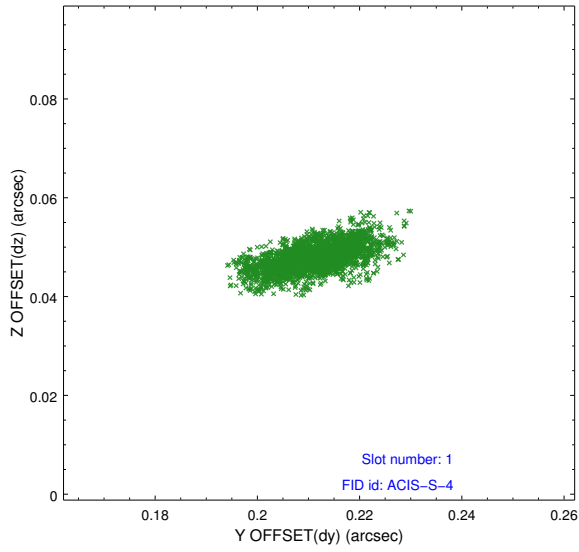


2.5 FID Slots

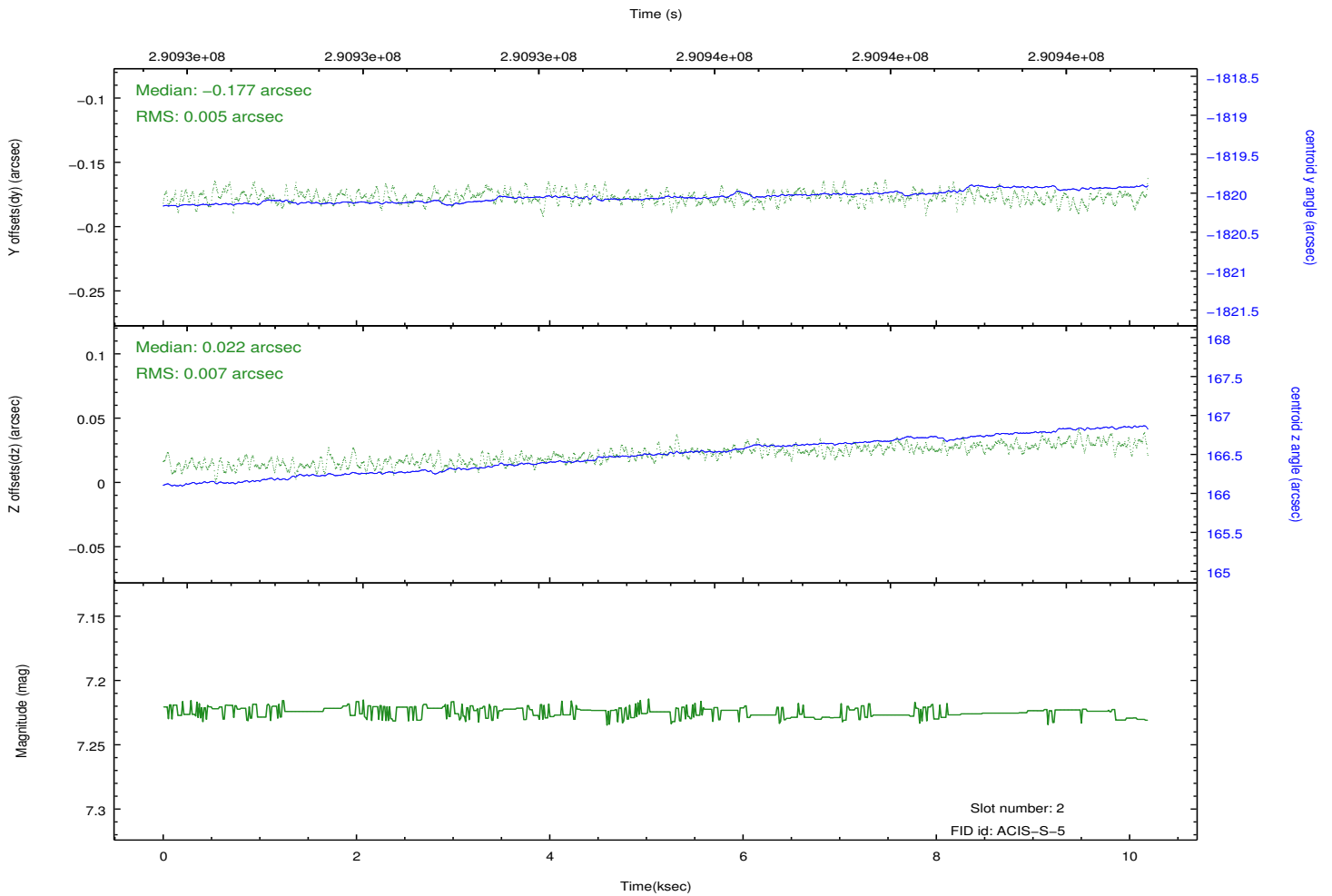
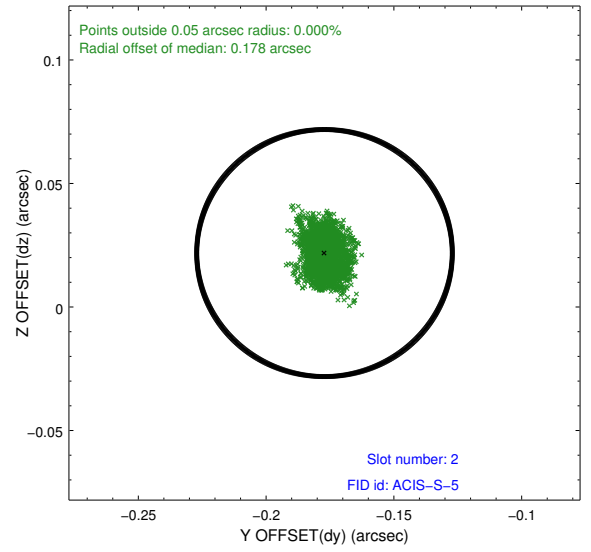
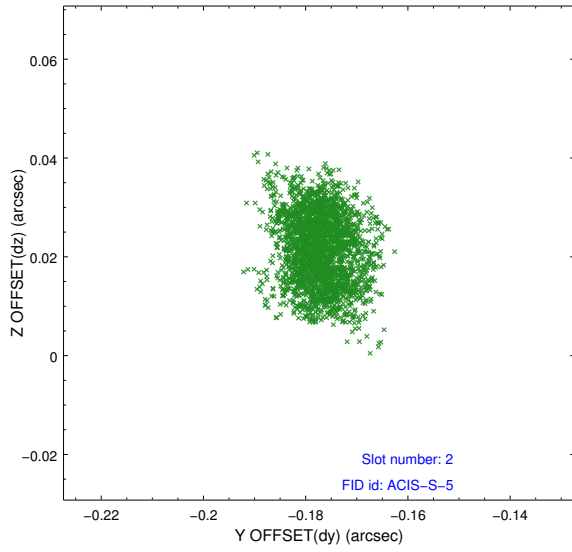
2.5.1 Slot 0



2.5.2 Slot 1



2.5.3 Slot 2



A Summary

A.1 Status

V&V Scientist	Jen Lauer
V&V Date (YYYY-MM-DD)	2012.04.23
V&V Edition	1
V&V Disposition and Status	OK
V&V Charge Time	10.1835

A.2 Comments