

# V&V Reference Report

## L2 ASCDS Version : 8.4.4

Observation 7775 - L2 Version 2  
Chandra X-Ray Center

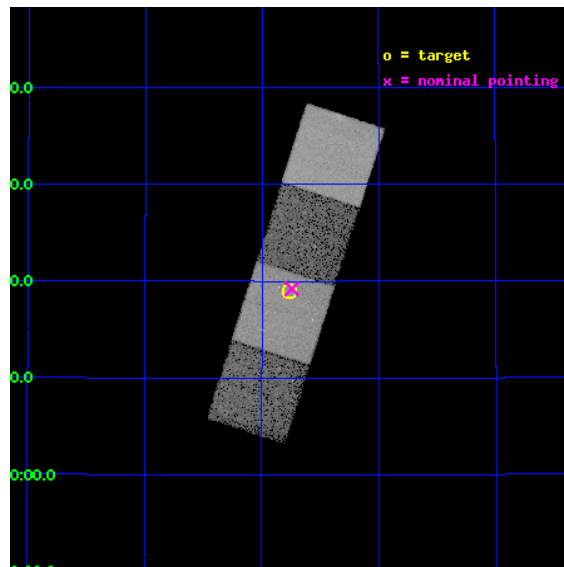
L2 Processing Date : May 10 2012

## Contents

<b>1</b>	<b>Front</b>	<b>2</b>
<b>2</b>	<b>OBI</b>	<b>3</b>
2.1	OBI . . . . .	3
2.1.1	Images . . . . .	3
2.1.2	Bias . . . . .	3
2.1.3	Parameters . . . . .	4
2.1.4	Events . . . . .	4
2.2	Compared Parameters . . . . .	5
2.3	Aspect . . . . .	6
2.4	Star Slots . . . . .	9
2.4.1	Slot 3 . . . . .	9
2.4.2	Slot 4 . . . . .	10
2.4.3	Slot 5 . . . . .	11
2.4.4	Slot 6 . . . . .	12
2.4.5	Slot 7 . . . . .	13
2.5	FID Slots . . . . .	14
2.5.1	Slot 0 . . . . .	14
2.5.2	Slot 1 . . . . .	15
2.5.3	Slot 2 . . . . .	16
<b>A</b>	<b>Summary</b>	<b>17</b>
A.1	Status . . . . .	17
A.2	Comments . . . . .	17

# 1 Front

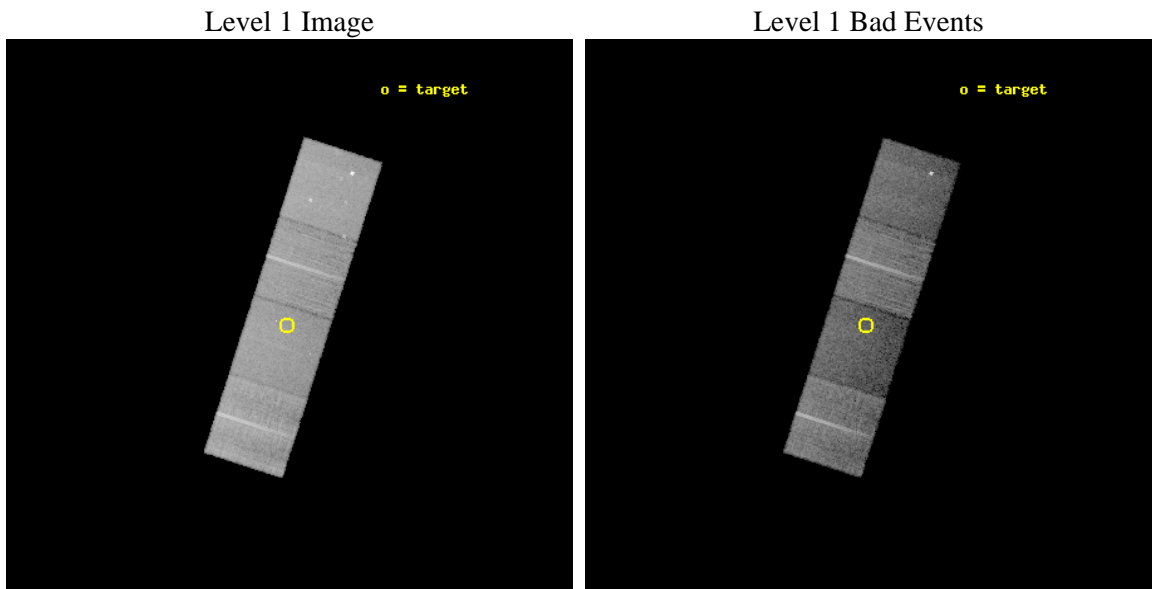
seq_num	701443	Sequence number
obs_id	7775	Observation id
title	Are Compton-thick quasars hidden among the population of heavily obscured Spitzer-selected AGN?	Proposal title
observer	Dr Cristian Vignali	Principal investigator
object	SST24 J142645.71+351901.4	Source name
dtcycle	0	&#160
cycle	P	events from which exps? Prim/Second/Both
ra_targ	216.690417	Observer's specified target RA [deg]
dec_targ	35.317056	Observer's specified target Dec [deg]
ra_nom	216.68588512622	Nominal RA [deg]
dec_nom	35.320238842828	Nominal Dec [deg]
roll_nom	107.80349479019	Nominal Roll [deg]
revision	2	Processing version of data
ontime	15043.20702529	Sum of GTIs [s]
livetime	14846.656450856	Livetime [s]
ontime5	15043.165985286	Sum of GTIs [s]
ontime6	15039.98396492	Sum of GTIs [s]
ontime7	15043.20702529	Sum of GTIs [s]
ontime8	15039.942914903	Sum of GTIs [s]
l2events	142219	Number of level 2 events



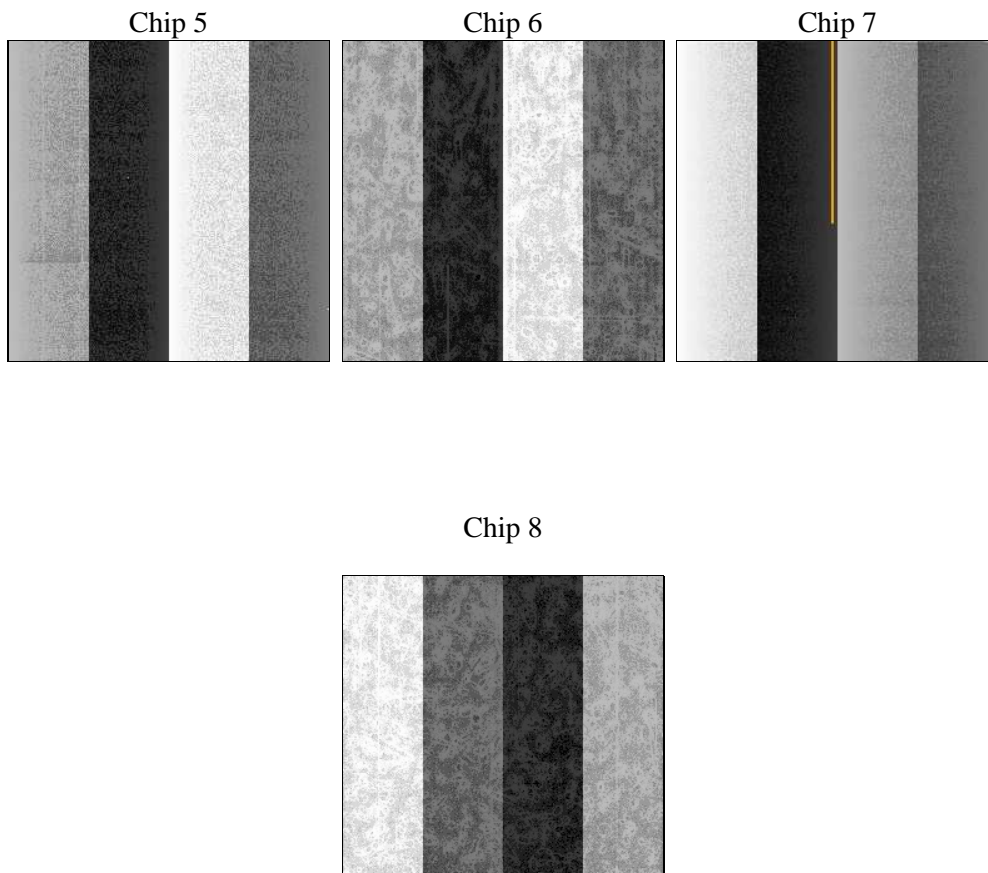
## 2 OBI

### 2.1 OBI

#### 2.1.1 Images



#### 2.1.2 Bias



### 2.1.3 Parameters

obi_num	0	Obi number	sched_exp_time	15000.000000	[s] Scheduled observation exposure time
ascdsver	8.4.4	Processing system revision	ontime	15043.20702529	Sum of GTIs [s]
caldbver	4.4.9	&#160	ontime5	15043.165985286	Sum of GTIs [s]
date	2012-05-10T22:24:55	Date and time of file creation	ontime6	15039.98396492	Sum of GTIs [s]
revision	2	Processing version of data	ontime7	15043.20702529	Sum of GTIs [s]
			ontime8	15039.942914903	Sum of GTIs [s]
			l1events	505047	Number of level 1 events

### 2.1.4 Events

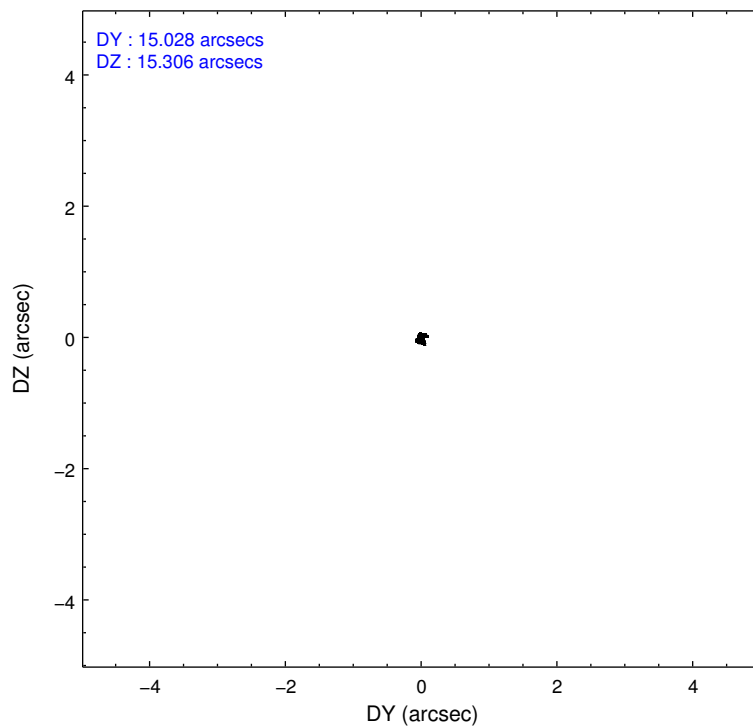
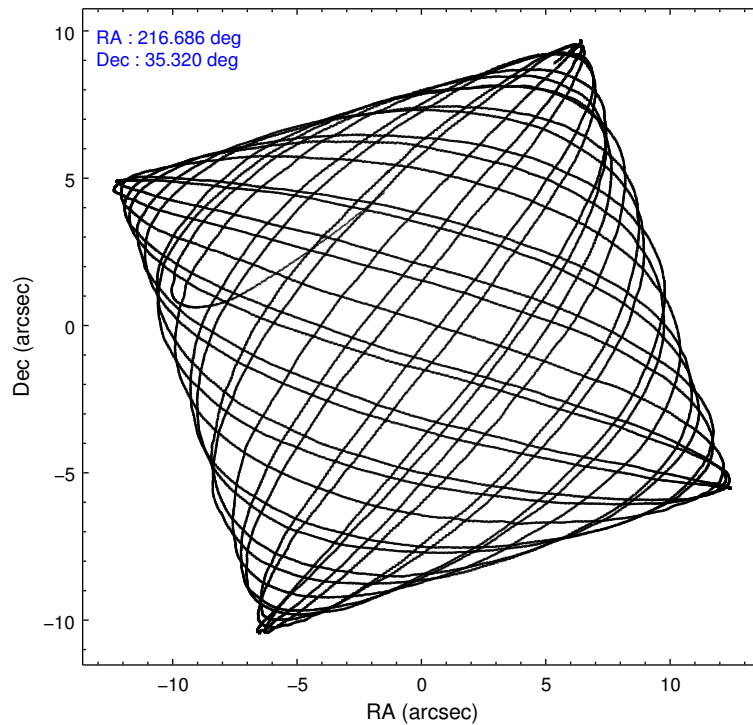
	ccd 5	ccd 6	ccd 7	ccd 8
level 1 events	144420	114722	107937	137968
rejected events	68993	103263	54533	103962
rejected %	47%	90%	50%	75%

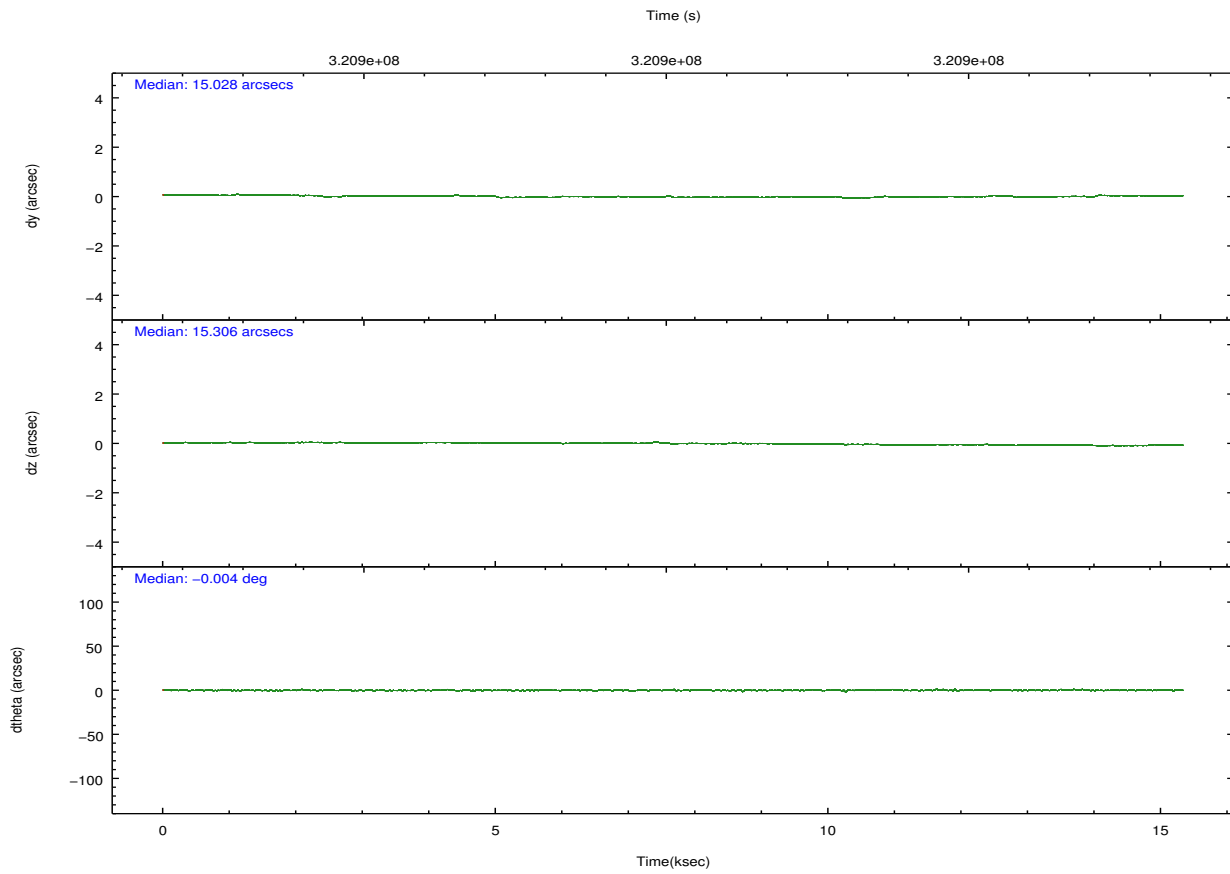
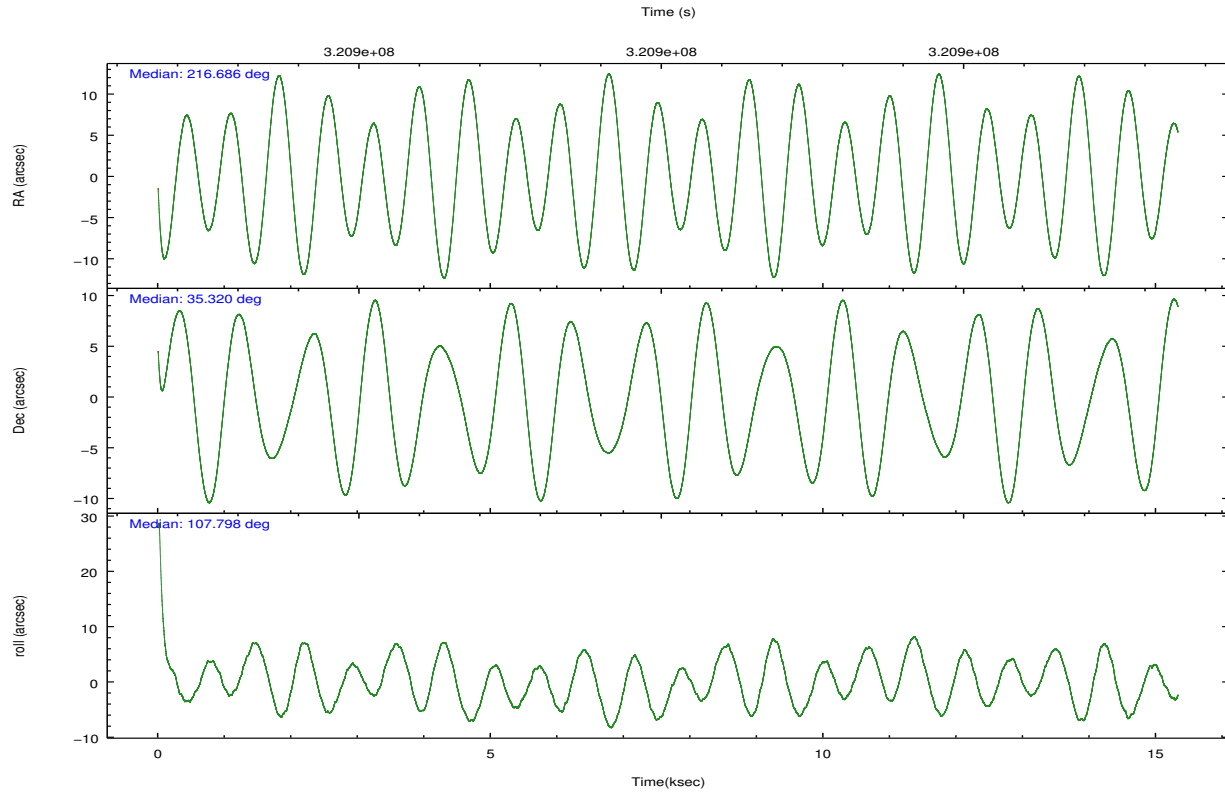
	ccd 5	ccd 6	ccd 7	ccd 8
grade 0 events	8319	4221	5698	9333
	5%	3%	5%	6%
grade 1 events	1982	68	176	108
	1%	0%	0%	0%
grade 2 events	23131	2517	11398	8049
	16%	2%	10%	5%
grade 3 events	3281	1265	5145	3799
	2%	1%	4%	2%
grade 4 events	3118	1220	4949	3508
	2%	1%	4%	2%
grade 5 events	11361	3818	11838	5877
	7%	3%	10%	4%
grade 6 events	37601	2242	26223	9330
	26%	1%	24%	6%
grade 7 events	55627	99371	42510	97964
	38%	86%	39%	71%

## 2.2 Compared Parameters

Parameter	Planned	Actual	Parameter	Planned	Actual
Instrument	ACIS	ACIS	Obspar format version number	7	7
Detector	ACIS-5678	ACIS-5678	Obspar file type	PREDICTED	ACTUAL
Grating	NONE	NONE	Obspar update status	NONE	UPDATED
Data mode	VFAINT	VFAINT	Number of optional ACIS chips dropped	0	0
Observation mode	POINTING	POINTING	On-chip summing requested	N	N
[deg] Pointing RA	216.711030	216.6858851262177	Subarray requested	NONE	NONE
[deg] Pointing Dec	35.302116	35.32023884282799	Alternating exposures requested	N	N
[deg] Pointing Roll	107.632312	107.8034947901862	[s] Primary exposure time	0.000000	3.1
[mm] SIM focus pos	-0.684267	-0.6828225247311905			
[mm] SIM defocus	0	0.001444936568705701			
[mm] SIM translation stage pos	-190.132523	-190.1400660498719			
[mm] SIM translation stage offset	0	0.00754346686406393			
[s] Observation start time (MET)	320892785.184000	320891843.75031			
Observation start date	2008-03-03T00:52:00	2008-03-03T00:37:23			
[s] Observation end time (MET)	320907785.184000	320908611.21363			
Observation end date	2008-03-03T05:02:00	2008-03-03T05:16:51			
Read mode	TIMED	TIMED			

## 2.3 Aspect





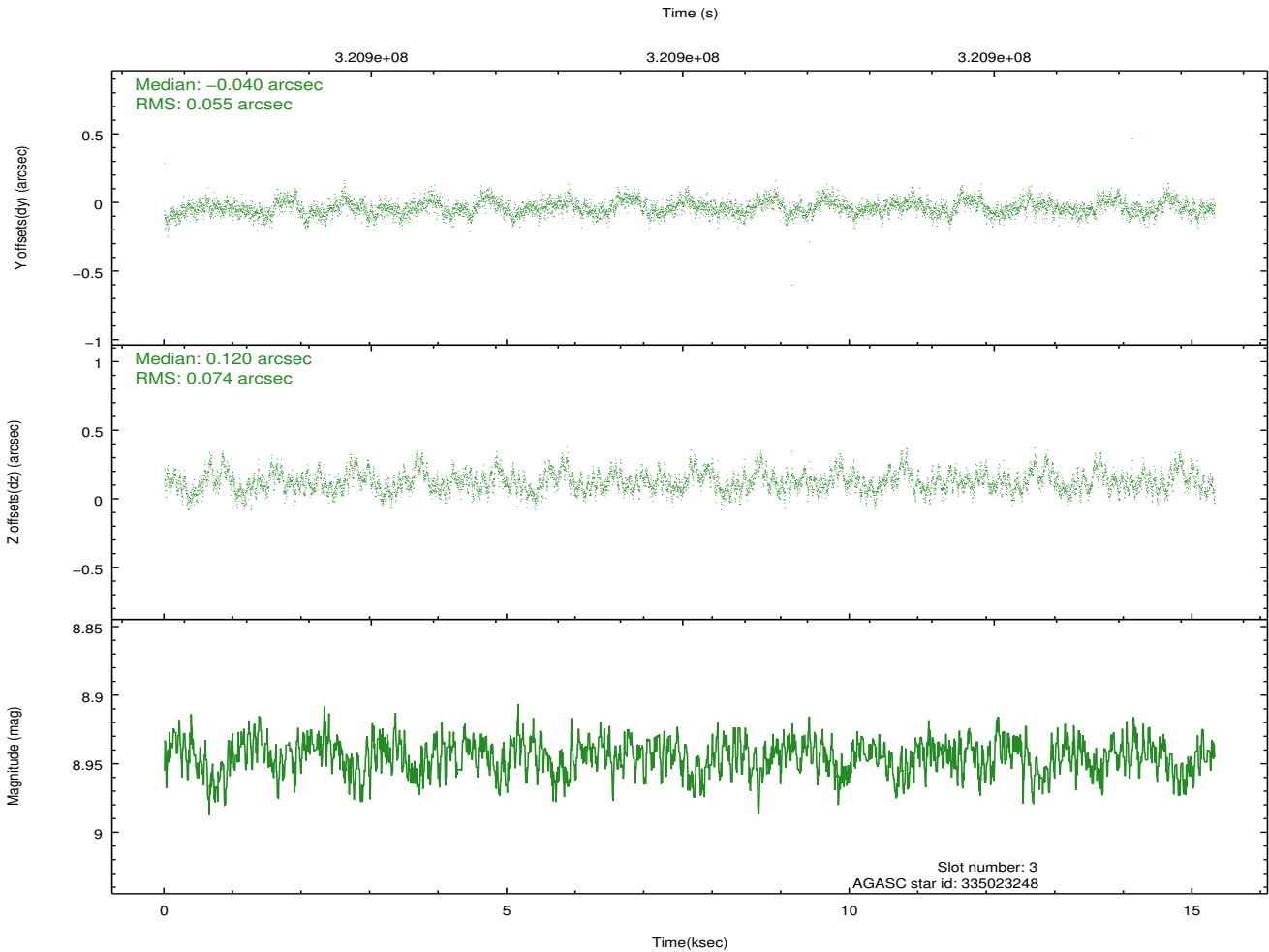
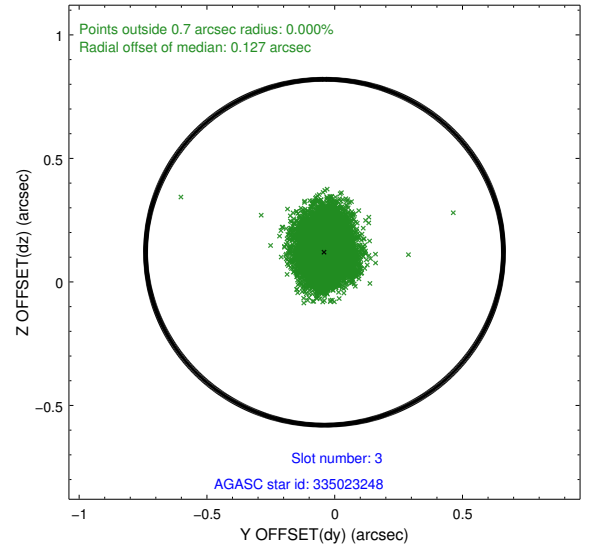
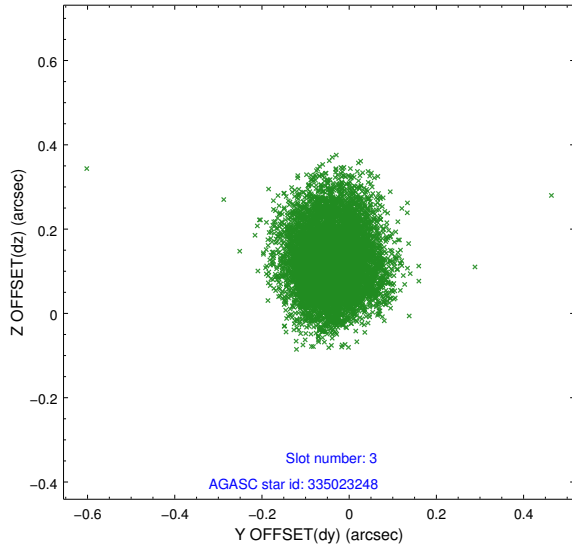
### Slot Statistics

slot	status	id	mag	n_pts	med_dy	med_dz	dr1	dr2	ra	dec	mean_y	mean_z
0	FID	ACIS-S-2	7.10	3740	-0.104	-0.023	0.007	0.011	0.000000	0.000000	-768.10	-1736.71
1	FID	ACIS-S-4	7.19	3740	0.204	0.056	0.006	0.010	0.000000	0.000000	2145.34	171.57
2	FID	ACIS-S-5	7.22	3739	-0.131	-0.025	0.007	0.012	0.000000	0.000000	-1820.60	165.47
3	GUIDE	335023248	8.94	7475	-0.040	0.120	0.098	0.159	217.634832	34.944512	-2040.33	-2211.57
4	GUIDE	335030384	8.83	7467	0.026	-0.265	0.080	0.134	216.806407	34.722197	-2075.12	363.09
5	GUIDE	335414448	7.36	7479	-0.233	-0.147	0.067	0.114	216.992261	35.577204	694.39	-1084.95
6	GUIDE	335417968	9.38	7473	0.071	0.237	0.135	0.214	217.358149	35.055285	-1418.15	-1549.76
7	GUIDE	335419056	10.26	7455	0.191	0.049	0.238	0.377	217.429800	35.467704	-63.32	-2189.92

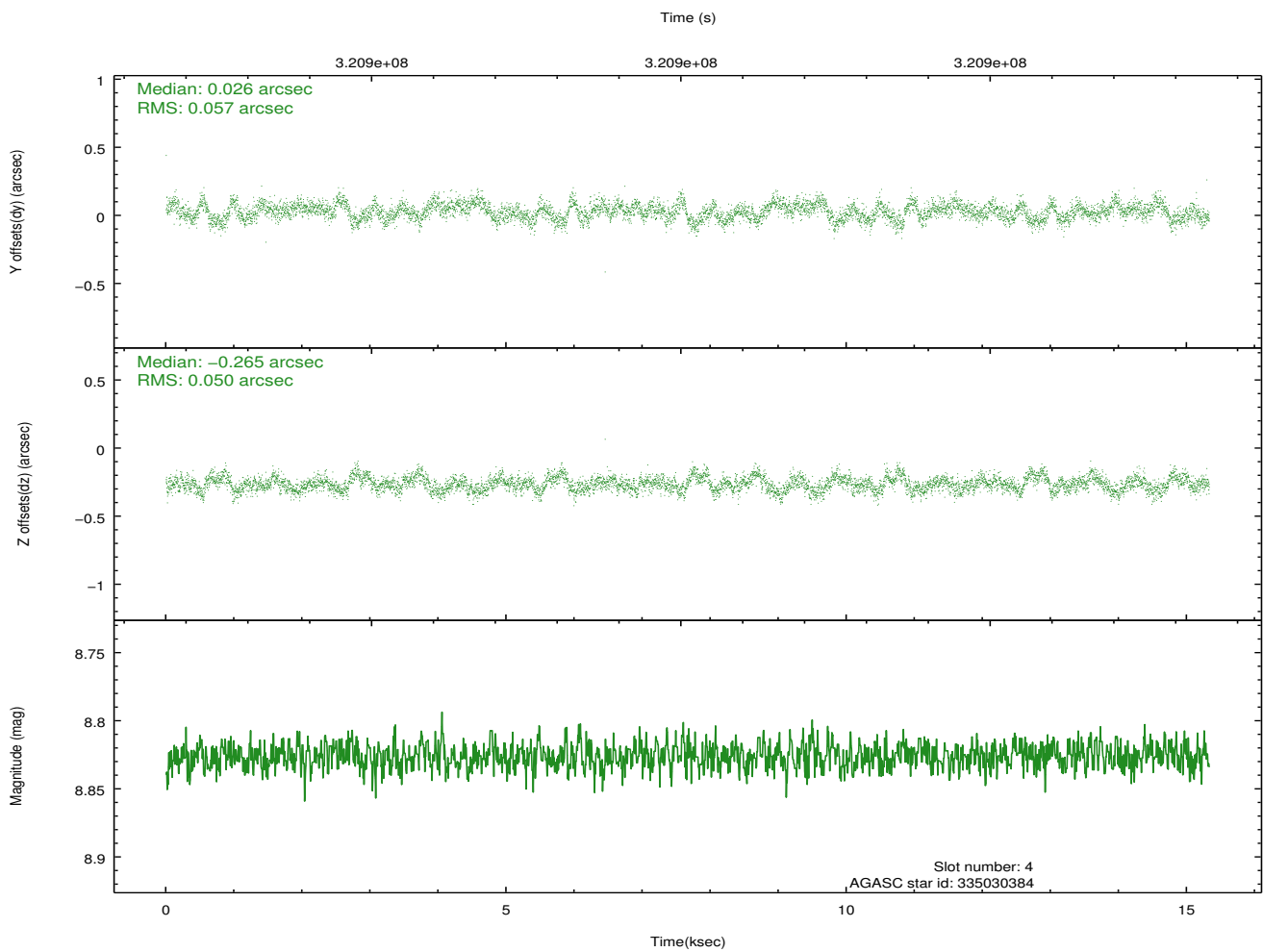
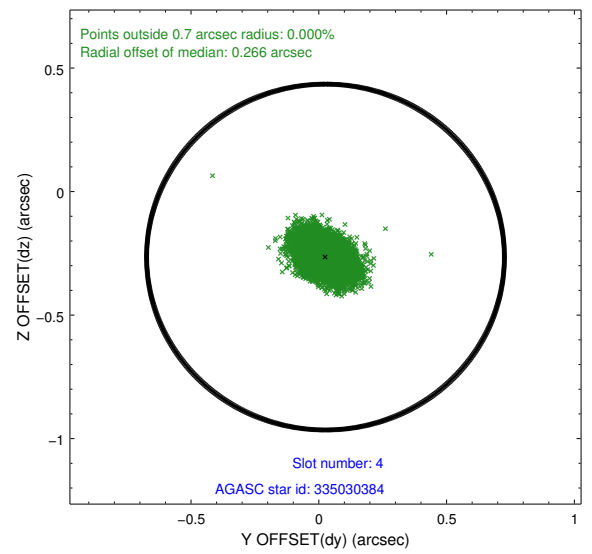
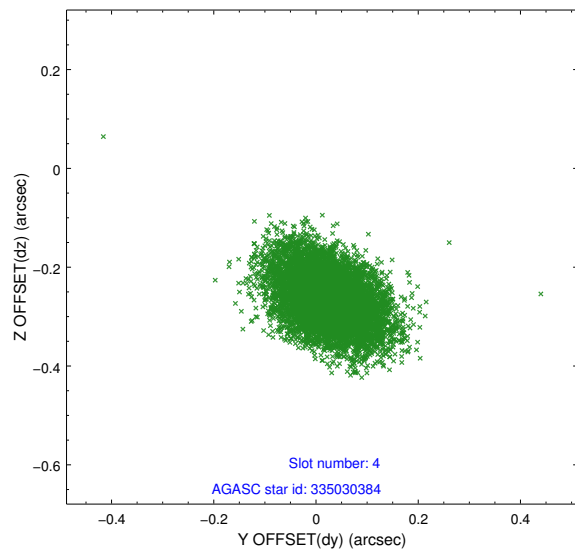
∞

## 2.4 Star Slots

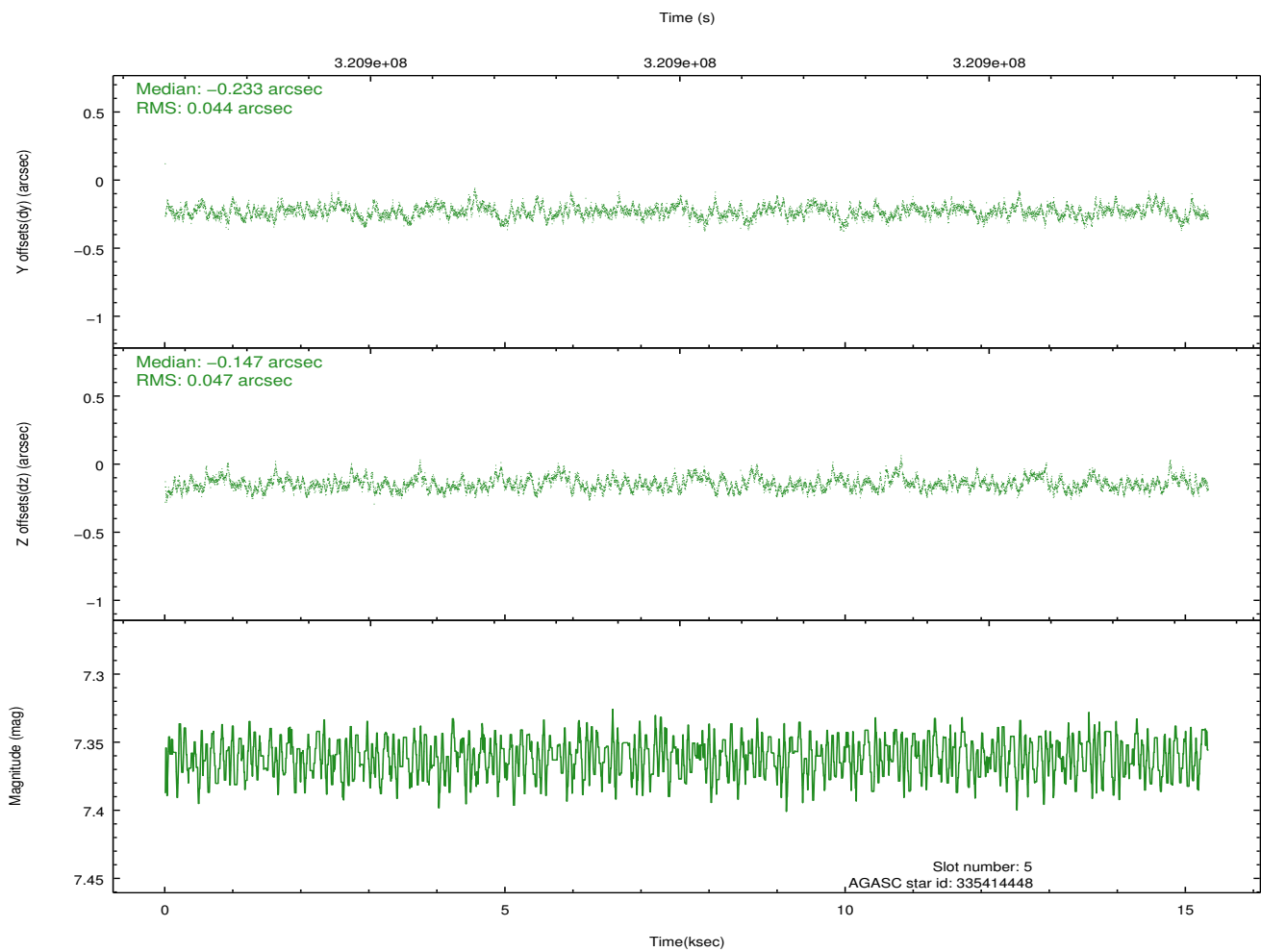
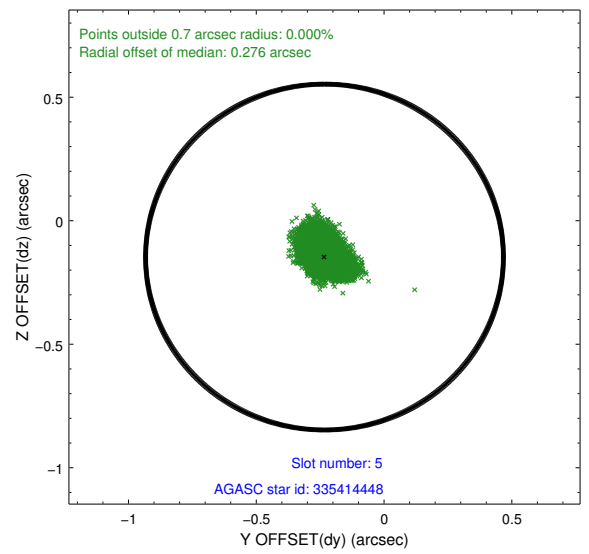
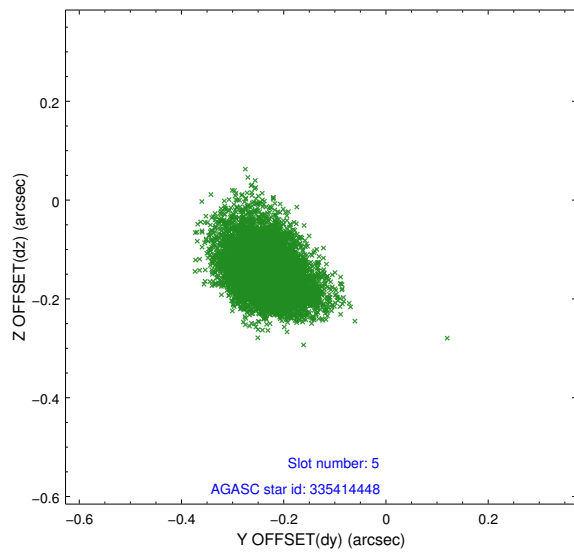
### 2.4.1 Slot 3



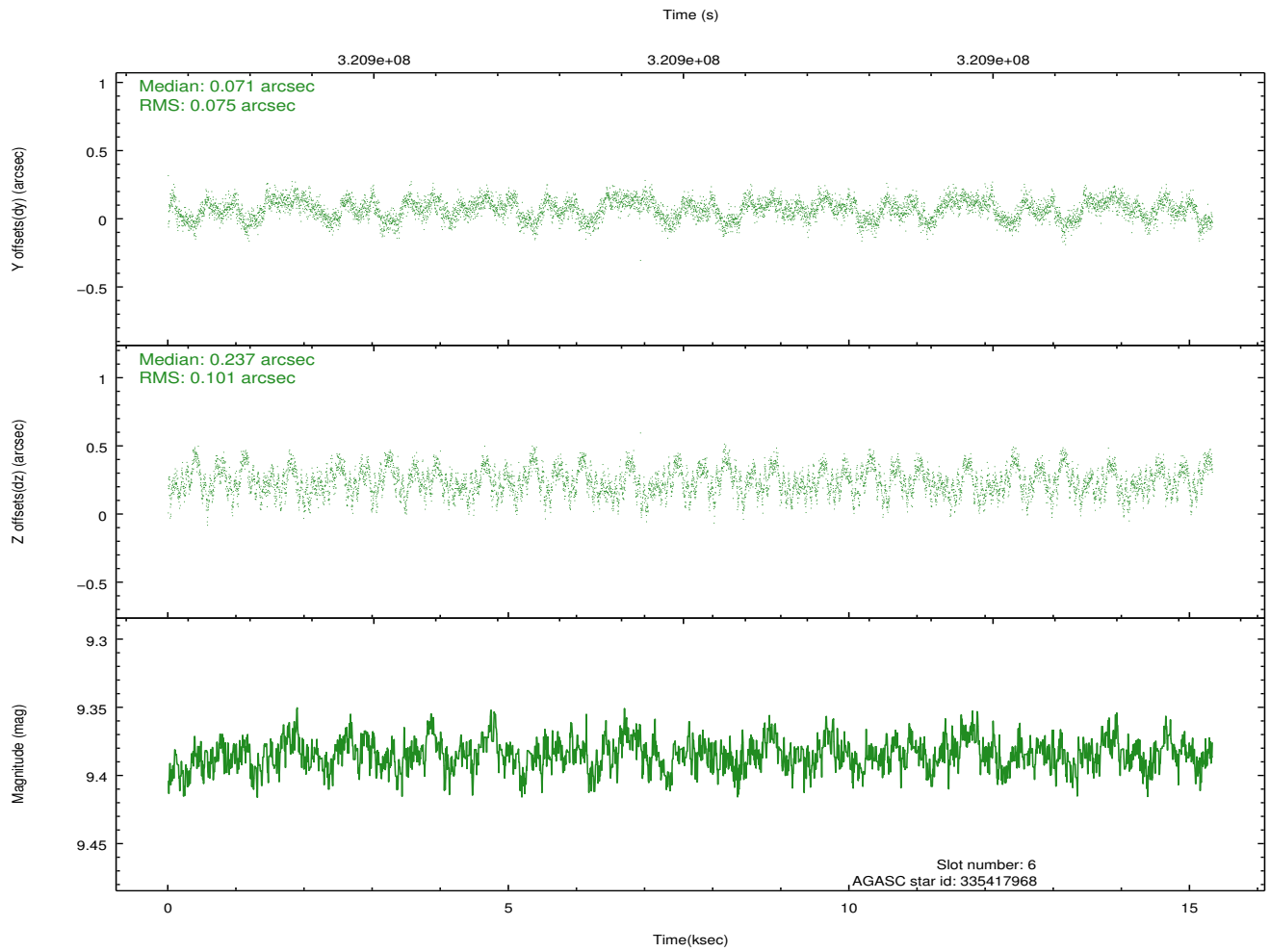
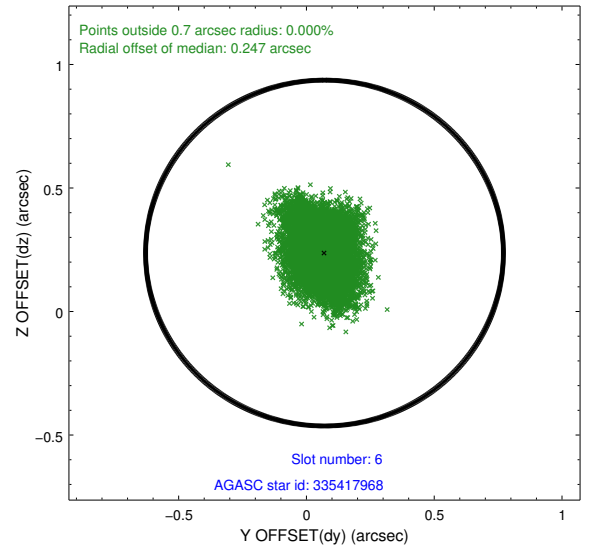
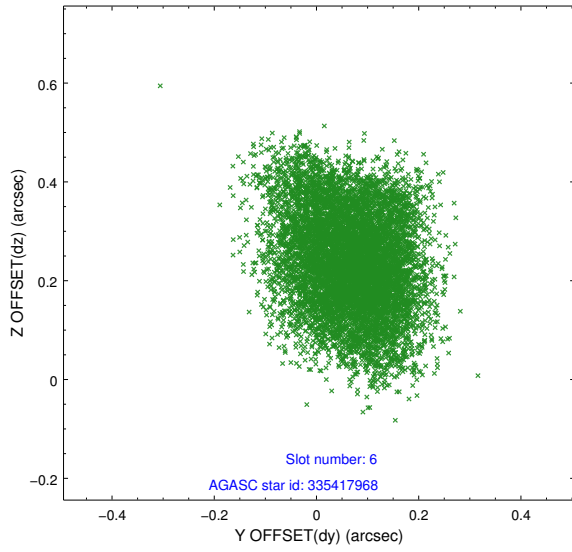
## 2.4.2 Slot 4



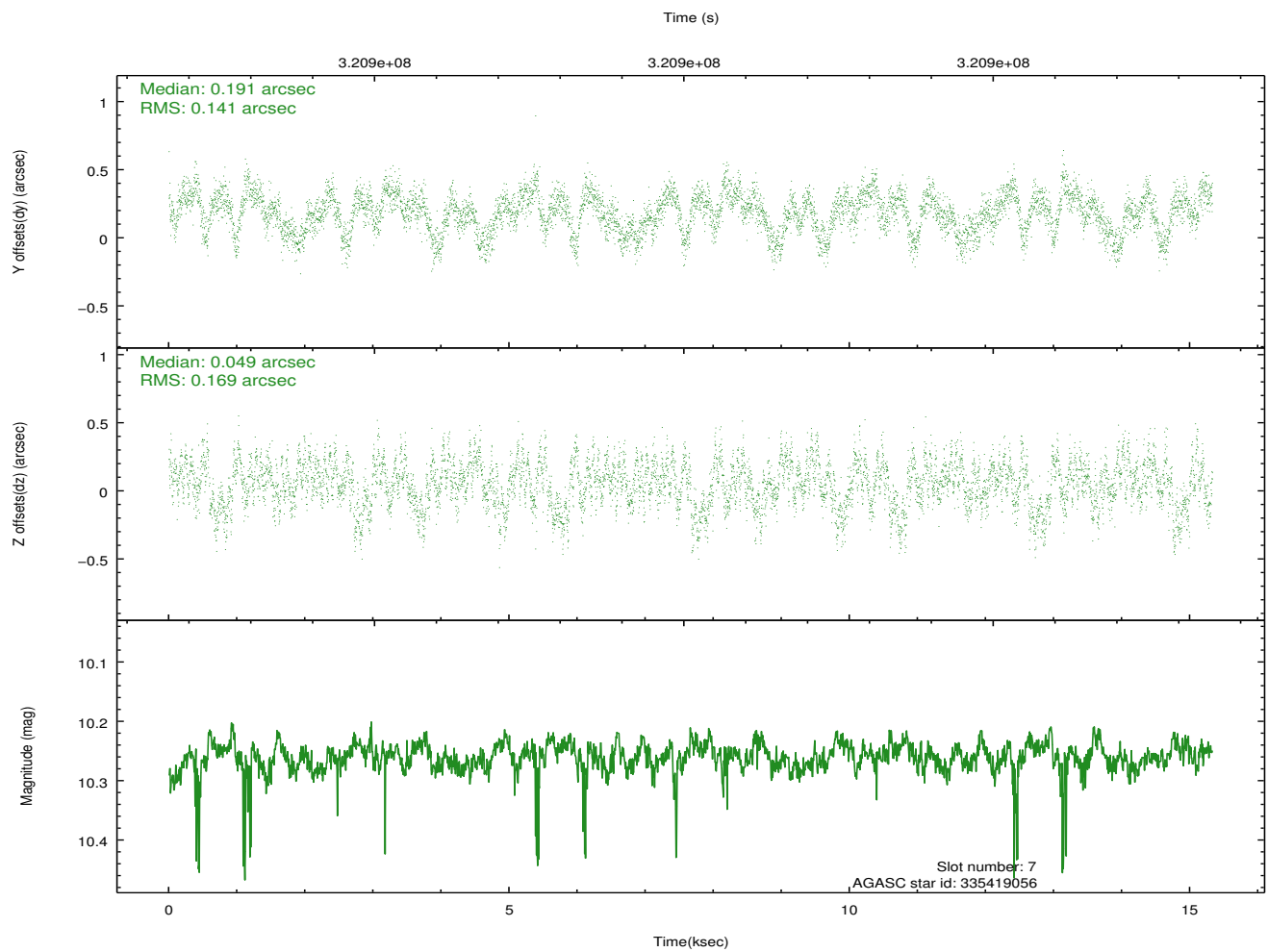
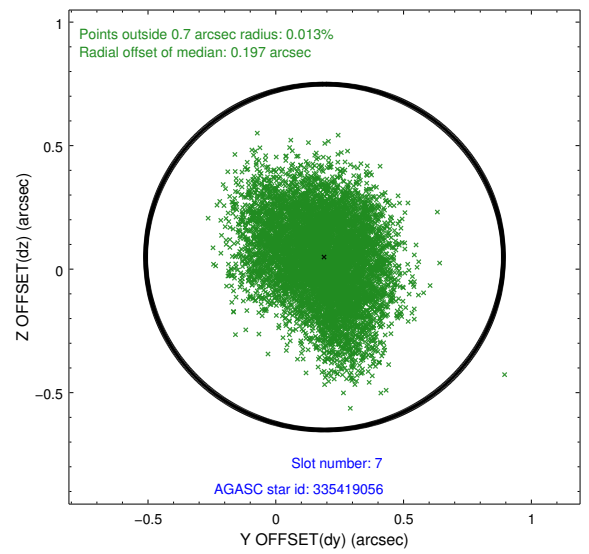
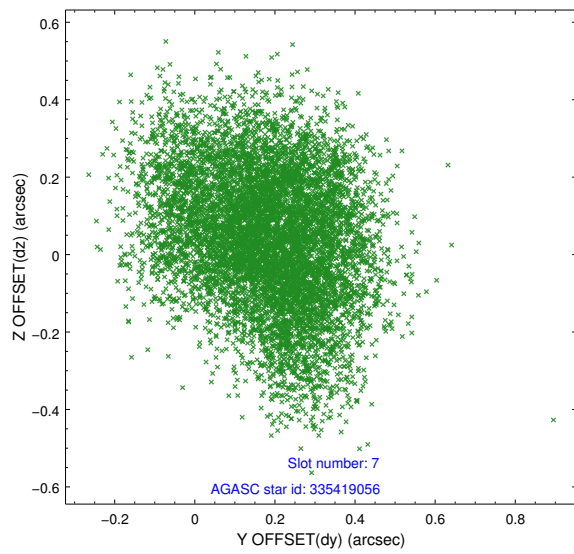
### 2.4.3 Slot 5



### 2.4.4 Slot 6

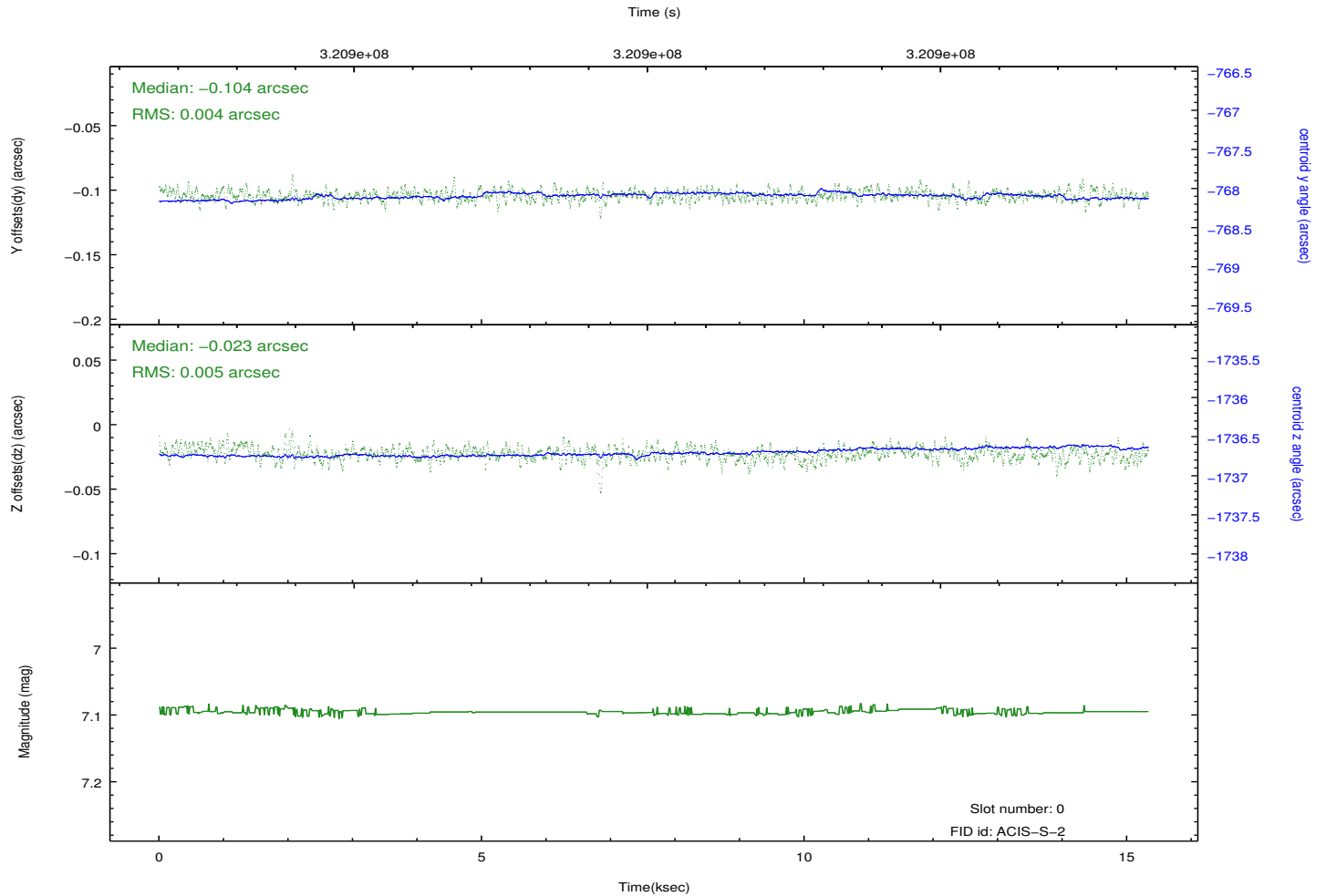
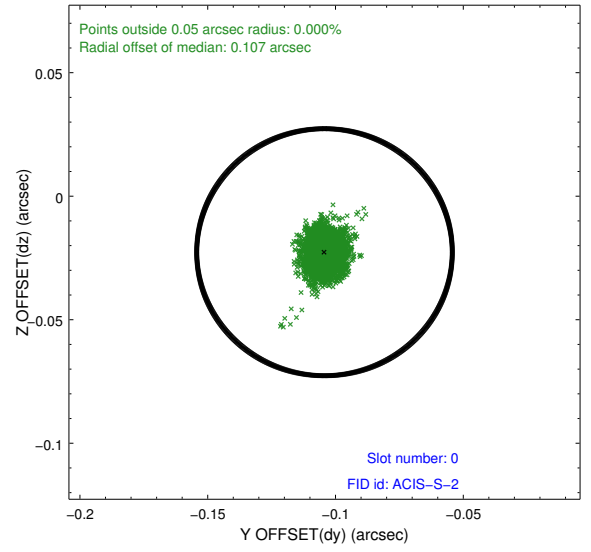
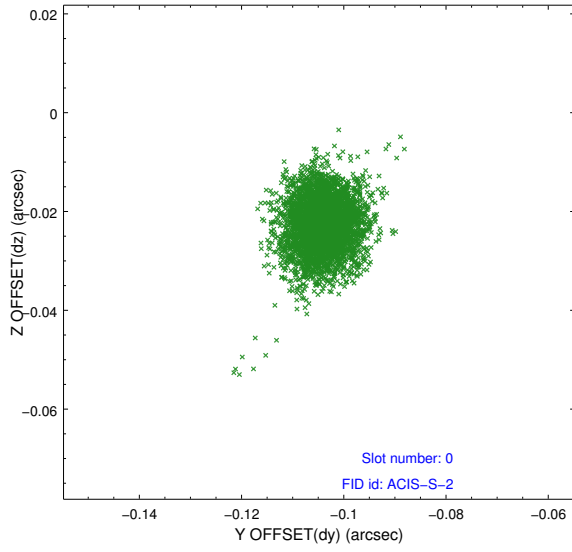


## 2.4.5 Slot 7

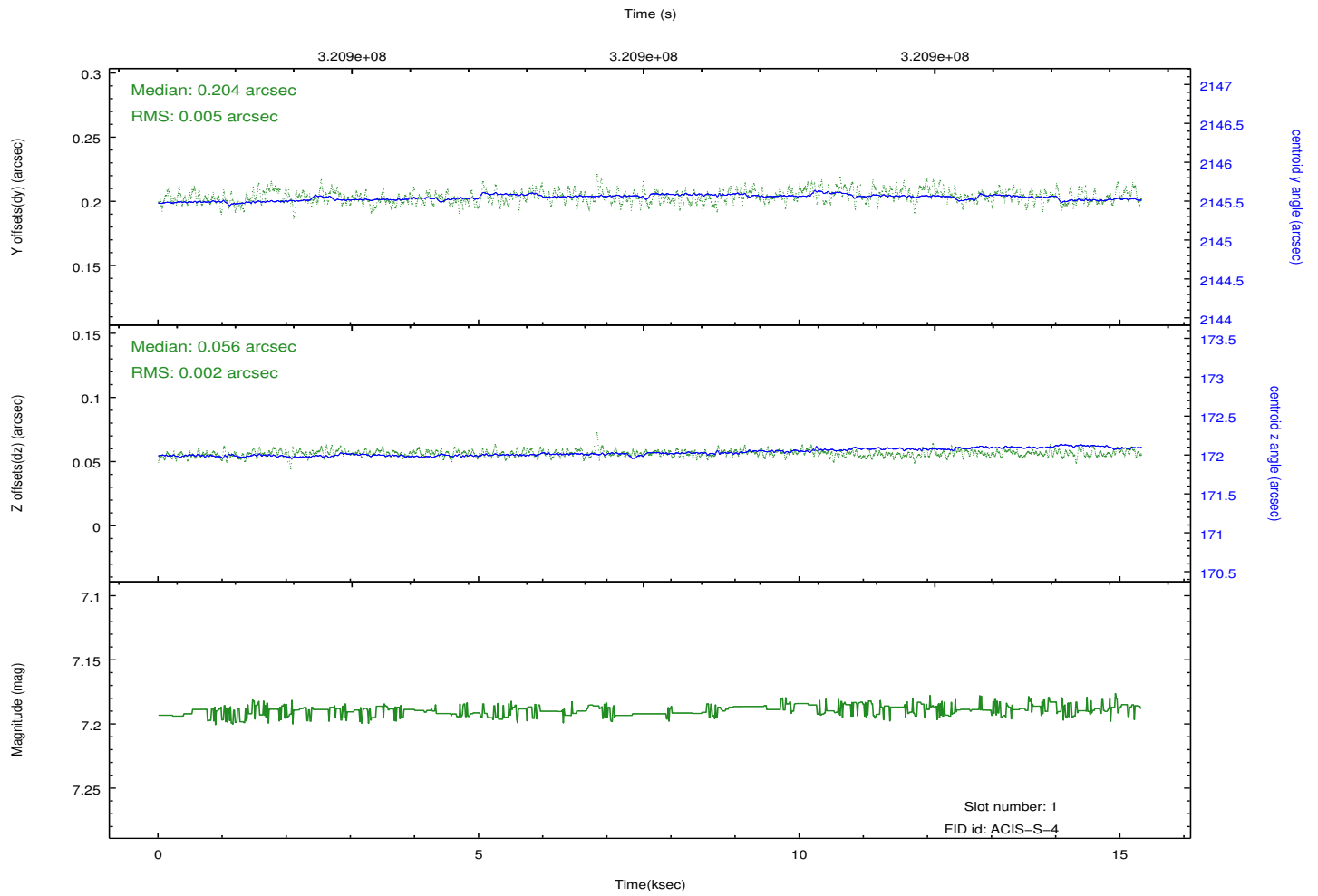
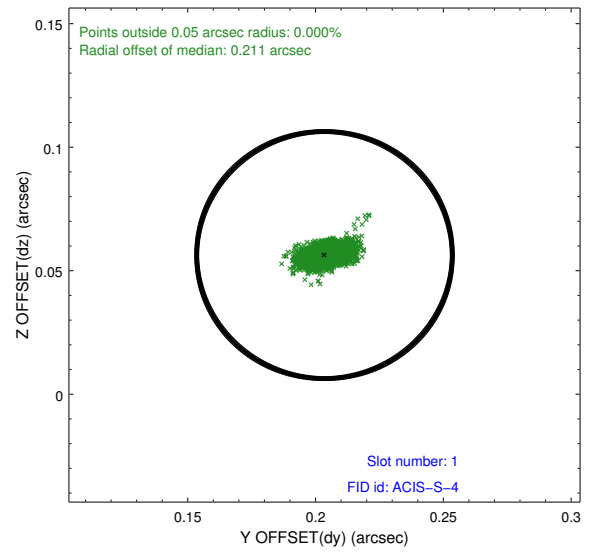
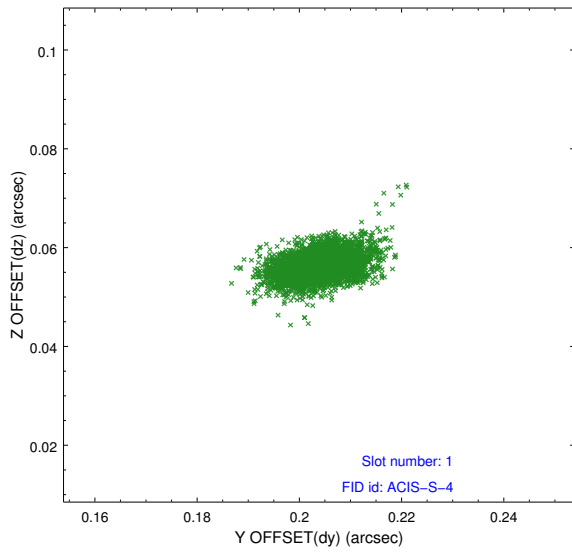


## 2.5 FID Slots

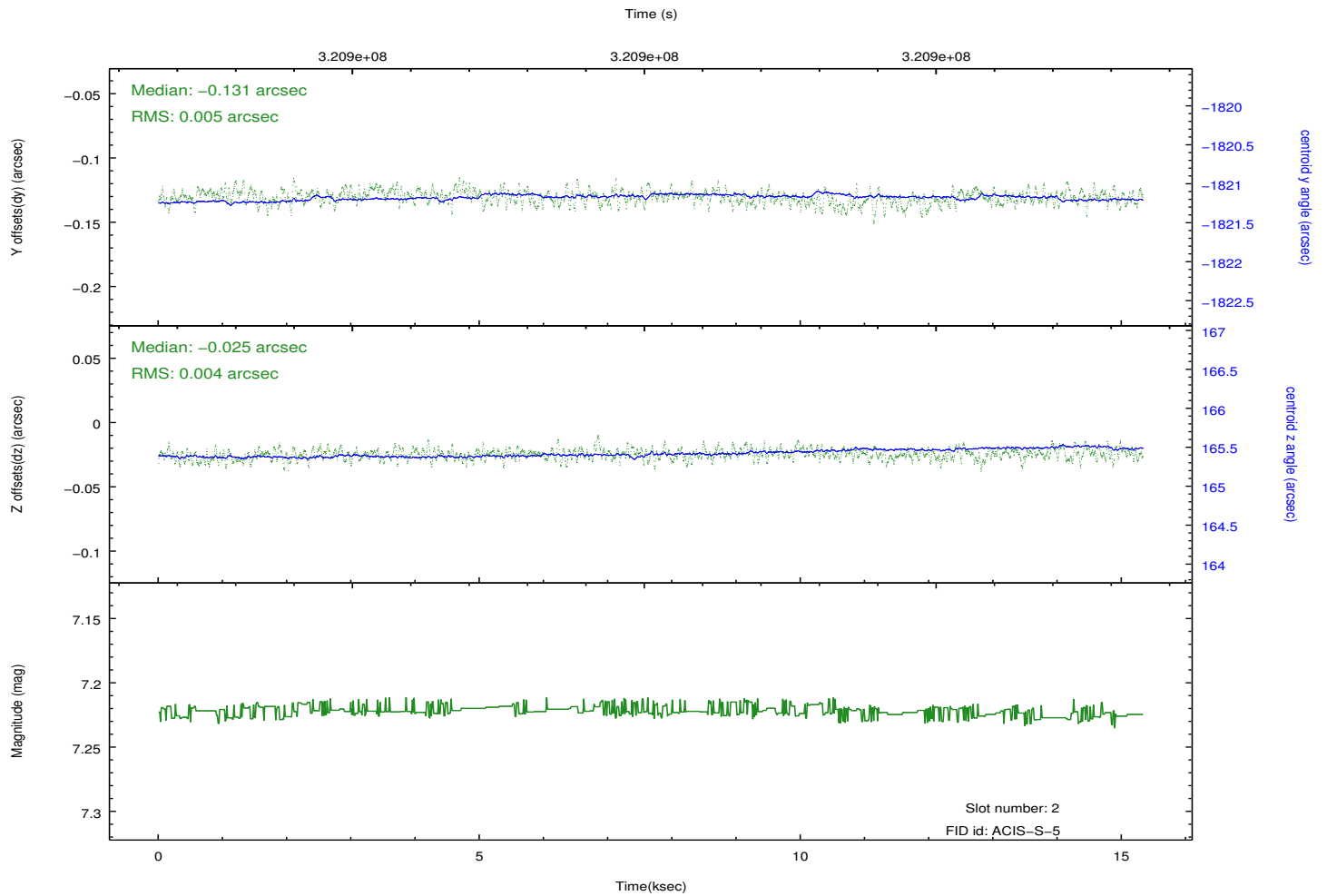
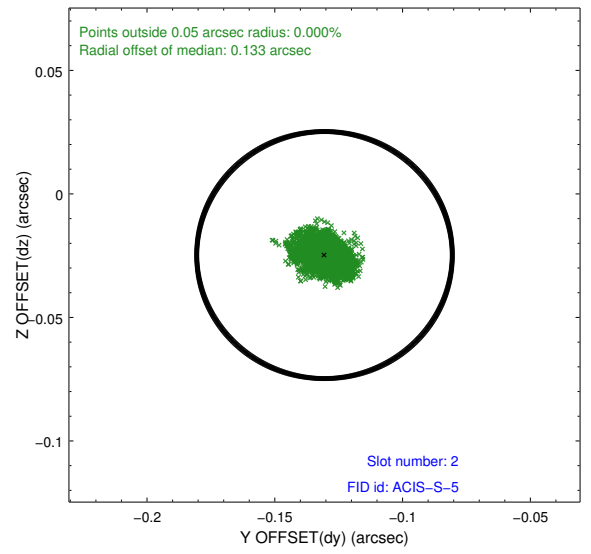
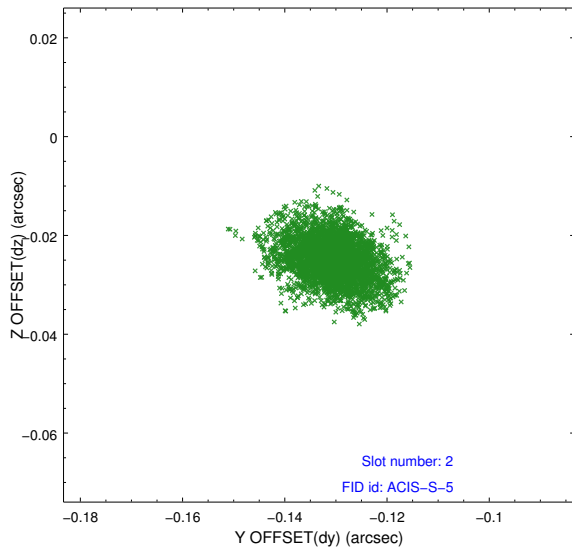
### 2.5.1 Slot 0



## 2.5.2 Slot 1



### 2.5.3 Slot 2



## **A Summary**

### **A.1 Status**

V&V Scientist	Jen Lauer
V&V Date (YYYY-MM-DD)	2012.05.14
V&V Edition	1
V&V Disposition and Status	OK
V&V Charge Time	15.0443001

### **A.2 Comments**