

V&V Reference Report

L2 ASCDS Version : 8.4.4

Observation 7825 - L2 Version 2
Chandra X-Ray Center

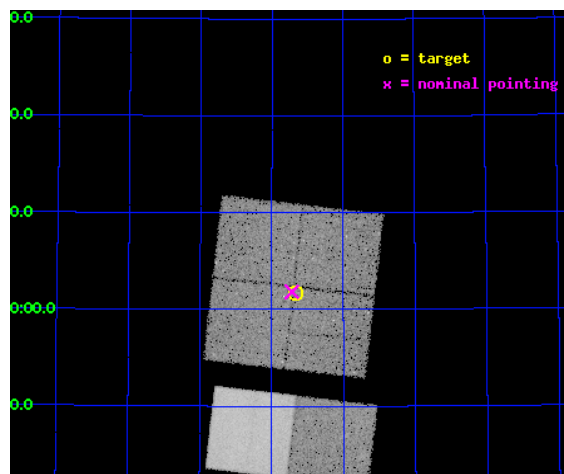
L2 Processing Date : Apr 26 2012

Contents

1	Front	2
2	OBI	3
2.1	OBI	3
2.1.1	Images	3
2.1.2	Bias	3
2.1.3	Parameters	4
2.1.4	Events	4
2.2	Compared Parameters	5
2.3	Aspect	6
2.4	Star Slots	9
2.4.1	Slot 3	9
2.4.2	Slot 4	10
2.4.3	Slot 5	11
2.4.4	Slot 6	12
2.4.5	Slot 7	13
2.5	FID Slots	14
2.5.1	Slot 0	14
2.5.2	Slot 1	15
2.5.3	Slot 2	16
A	Summary	17
A.1	Status	17
A.2	Comments	17

1 Front

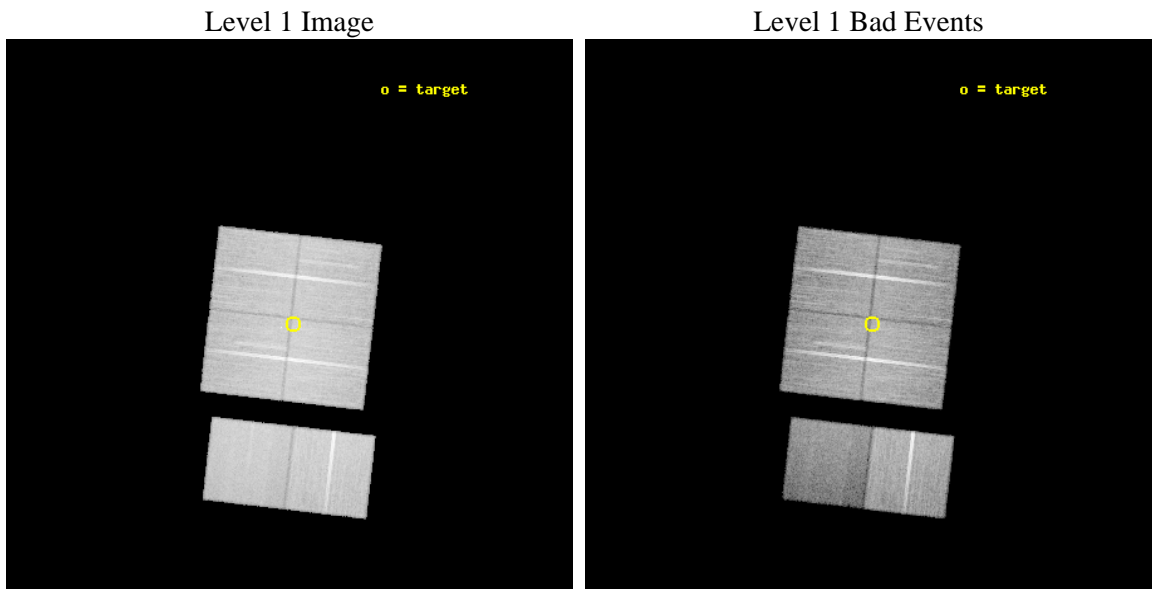
seq_num	701489	Sequence number
obs_id	7825	Observation id
title	What Powers the z~2 Spitzer ULIRGs in the First Look Survey	Propos
observer	Dr. Lin Yan	Principal investigator
object	FLS2	Source name
dtcycle	0	
cycle	P	events from which exps? Prim/Second/Both
ra_targ	259.667083	Observer's specified target RA [deg]
dec_targ	60.028	Observer's specified target Dec [deg]
ra_nom	259.67954263881	Nominal RA [deg]
dec_nom	60.030433340438	Nominal Dec [deg]
roll_nom	186.58131026584	Nominal Roll [deg]
revision	2	Processing version of data
ontime	28403.117933571	Sum of GTIs [s]
livetime	28043.460551992	Livetime [s]
ontime0	28406.358923972	Sum of GTIs [s]
ontime1	28409.599894226	Sum of GTIs [s]
ontime2	28403.117963493	Sum of GTIs [s]
ontime3	28403.117933571	Sum of GTIs [s]
ontime6	28409.599894226	Sum of GTIs [s]
ontime7	28409.599894226	Sum of GTIs [s]
l2events	181174	Number of level 2 events



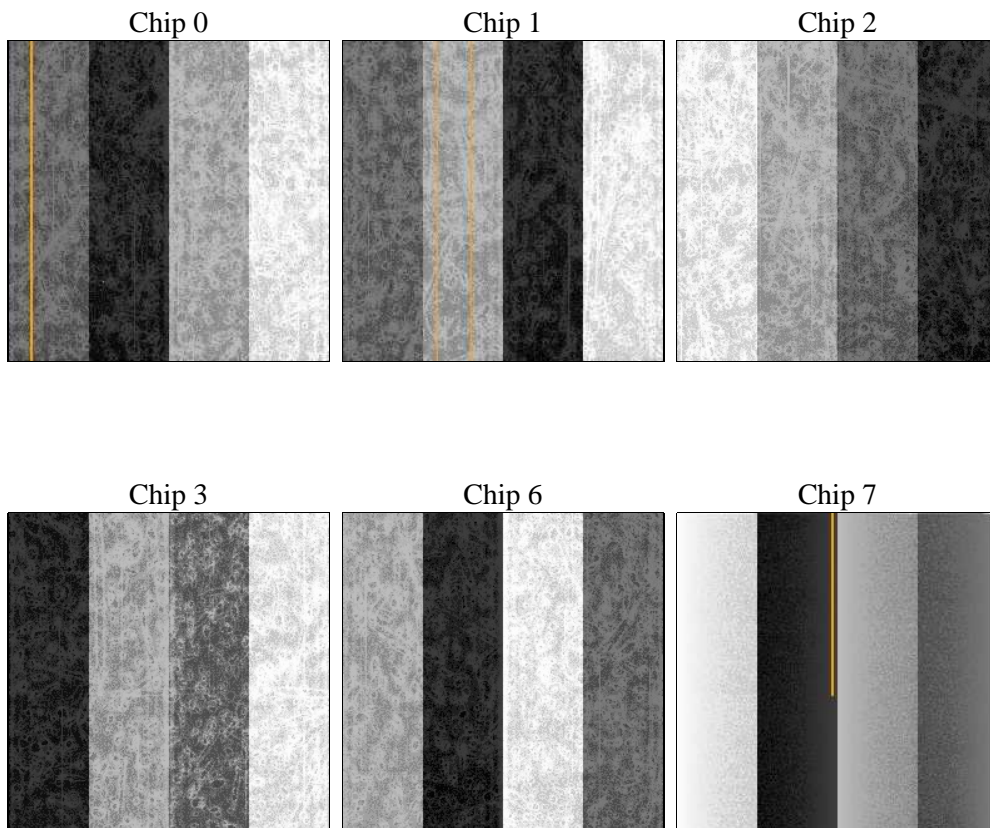
2 OBI

2.1 OBI

2.1.1 Images



2.1.2 Bias



2.1.3 Parameters

obi_num	0	Obi number	sched_exp_time	28237.435000	[s] Scheduled observation exposure time
ascdsver	8.4.4	Processing system revision	ontime	28403.117933571	Sum of GTIs [s]
caldbver	4.4.9	 	ontime0	28406.358923972	Sum of GTIs [s]
date	2012-04-26T13:46:58	Date and time of file creation	ontime1	28409.599894226	Sum of GTIs [s]
revision	2	Processing version of data	ontime2	28403.117963493	Sum of GTIs [s]
			ontime3	28403.117933571	Sum of GTIs [s]
			ontime6	28409.599894226	Sum of GTIs [s]
			ontime7	28409.599894226	Sum of GTIs [s]
			l1events	1274838	Number of level 1 events

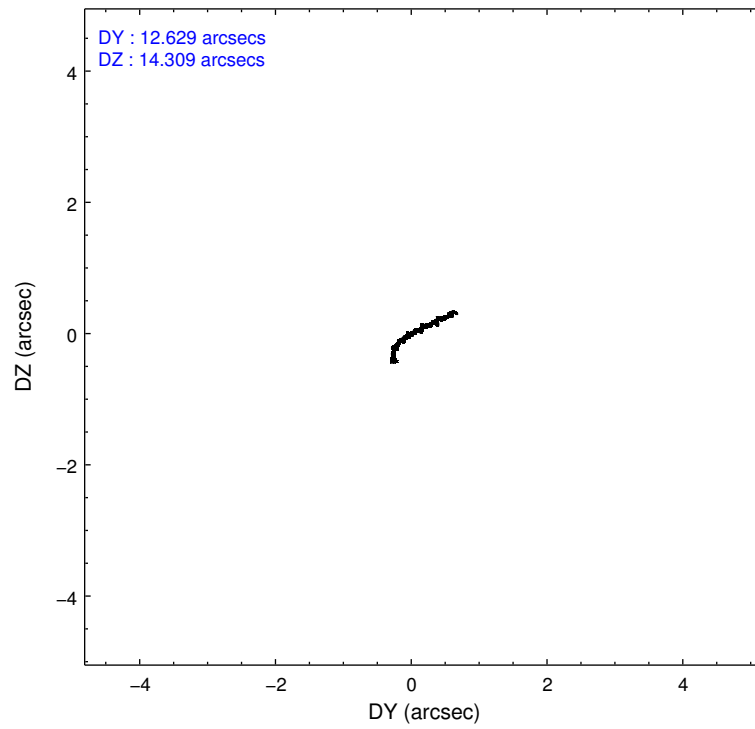
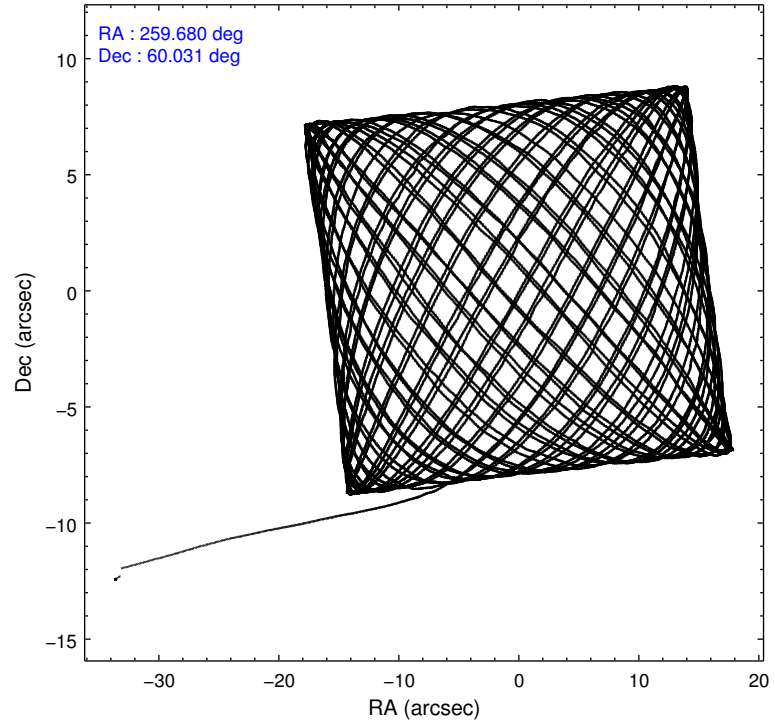
2.1.4 Events

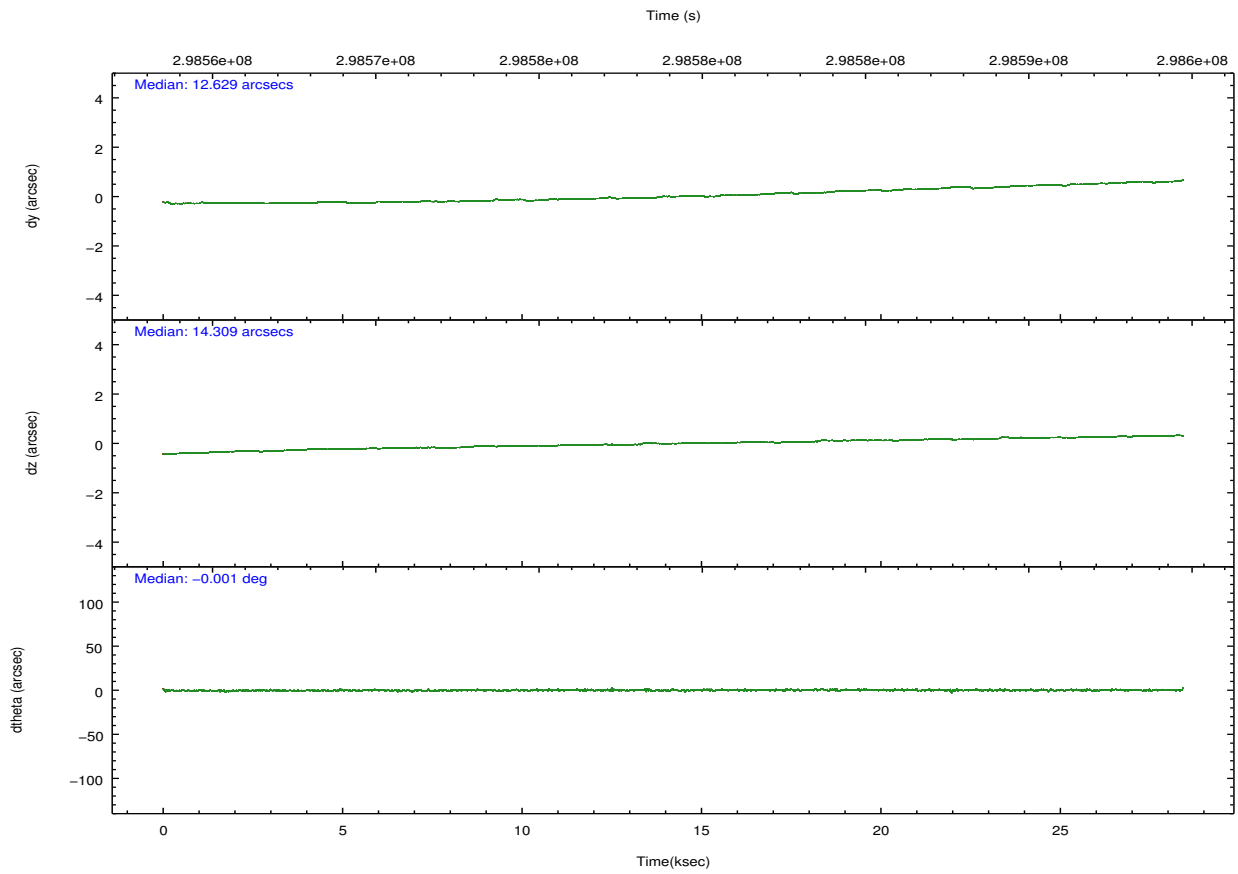
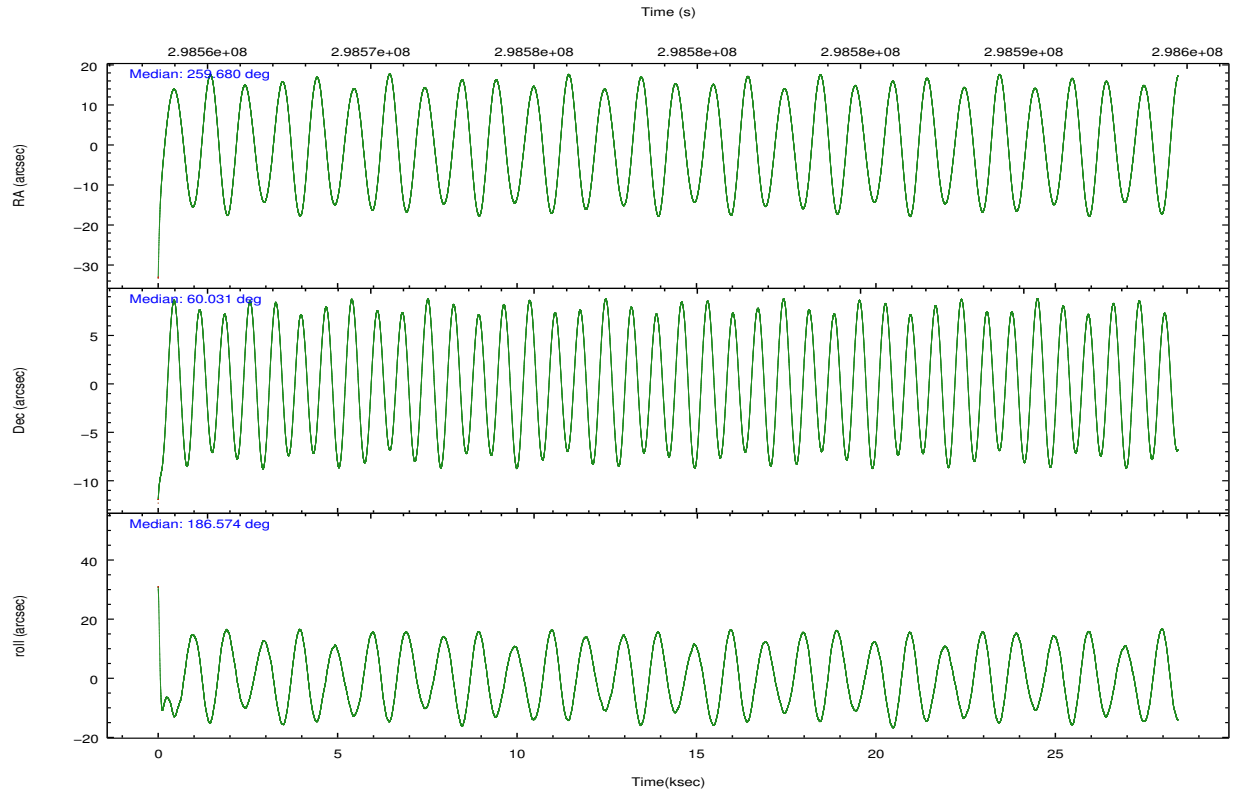
	ccd 0	ccd 1	ccd 2	ccd 3	ccd 6	ccd 7		ccd 0	ccd 1	ccd 2	ccd 3	ccd 6	ccd 7
level 1 events	204534	199031	233332	208954	226224	202763	grade 0 events	7526	7438	7650	7369	7781	10455
rejected events	183866	177547	213089	189429	204740	102888		3%	3%	3%	3%	3%	5%
rejected %	89%	89%	91%	90%	90%	50%	grade 1 events	118	97	101	136	114	296
								0%	0%	0%	0%	0%	0%
							grade 2 events	5111	4694	4932	4250	4876	21235
								2%	2%	2%	2%	2%	10%
							grade 3 events	2413	2654	2121	2257	2313	9595
								1%	1%	0%	1%	1%	4%
							grade 4 events	2145	2505	2194	2223	2378	9476
								1%	1%	0%	1%	1%	4%
							grade 5 events	6148	6846	5604	7323	7433	21927
								3%	3%	2%	3%	3%	10%
							grade 6 events	3628	4351	3496	3570	4292	49811
								1%	2%	1%	1%	1%	24%
							grade 7 events	177445	170446	207234	181826	197037	79968
								86%	85%	88%	87%	87%	39%

2.2 Compared Parameters

Parameter	Planned	Actual	Parameter	Planned	Actual
Instrument	ACIS	ACIS	Obspar format version number	7	7
Detector	ACIS-012367	ACIS-012367	Obspar file type	PREDICTED	ACTUAL
Grating	NONE	NONE	Obspar update status	NONE	UPDATED
Data mode	VFAINT	VFAINT	CCD I0 on	Y	Y
Observation mode	POINTING	POINTING	CCD I1 on	Y	Y
[deg] Pointing RA	259.723632	259.6795426388131	CCD I2 on	Y	Y
[deg] Pointing Dec	60.046917	60.03043334043758	CCD I3 on	Y	Y
[deg] Pointing Roll	186.334411	186.5813102658429	CCD S0 on	N	N
[mm] SIM focus pos	-0.782348	-0.7809083437167272	CCD S1 on	N	N
[mm] SIM defocus	0	0.001439871863259334	CCD S2 on	O1	Y
[mm] SIM translation stage pos	-233.992463	-233.9897249090783	CCD S3 on	O2	Y
[mm] SIM translation stage offset	0.4	0.3972719061486032	CCD S4 on	N	N
[s] Observation start time (MET)	298565075.184000	298563906.87355	CCD S5 on	N	N
Observation start date	2007-06-18T14:43:30	2007-06-18T14:25:06	Number of optional ACIS chips dropped	0	0
[s] Observation end time (MET)	298593312.184000	298593554.99997	On-chip summing requested	N	N
Observation end date	2007-06-18T22:34:07	2007-06-18T22:39:14	Subarray requested	NONE	NONE
Read mode	TIMED	TIMED	Alternating exposures requested	N	N
			[s] Primary exposure time	0.000000	3.2

2.3 Aspect



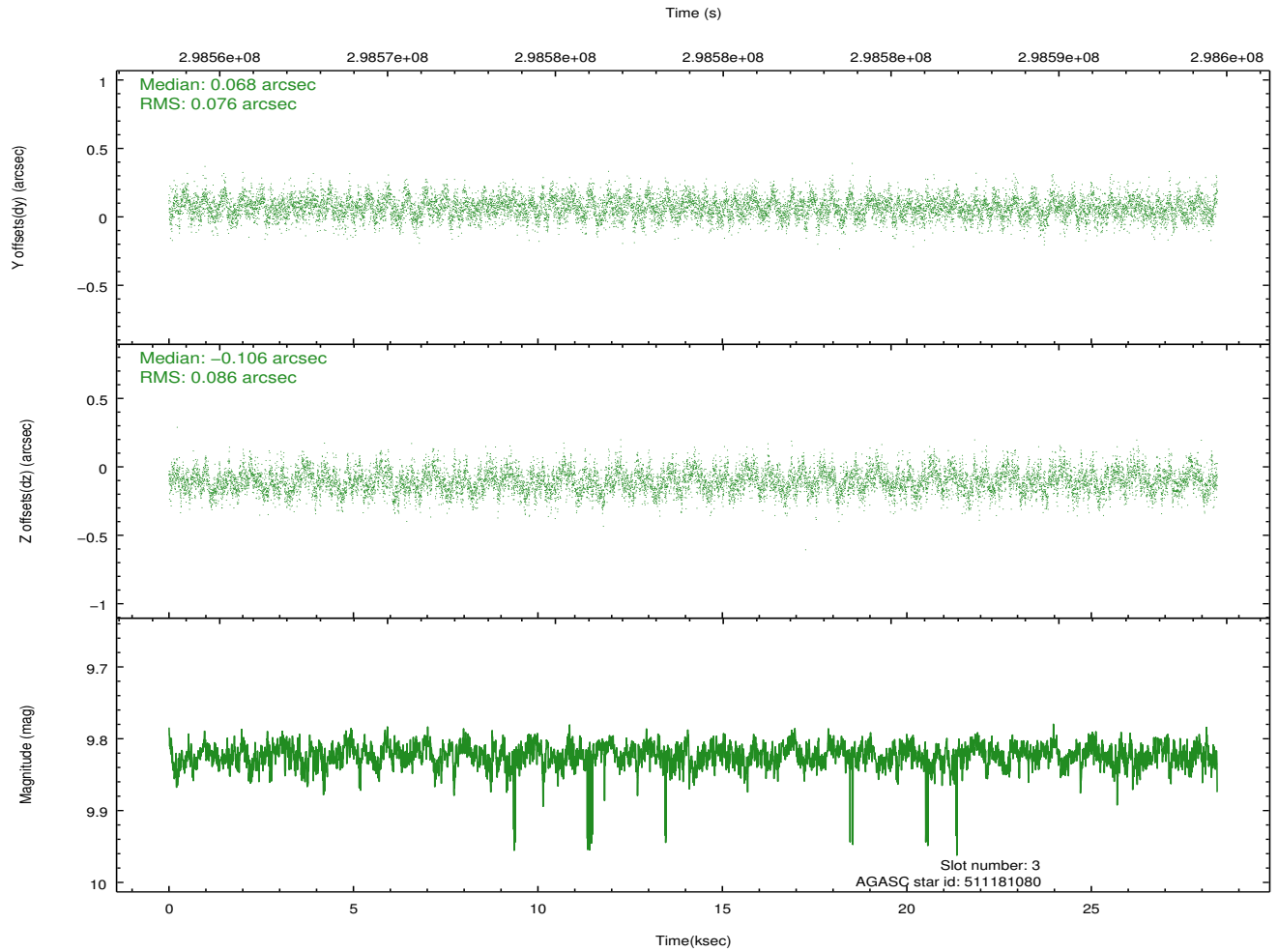
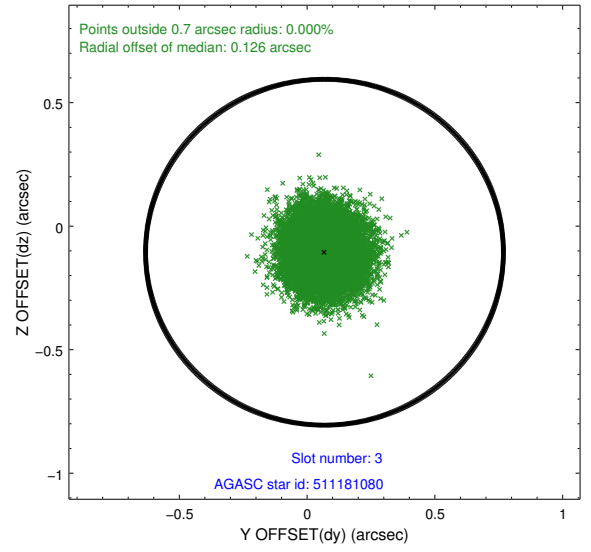
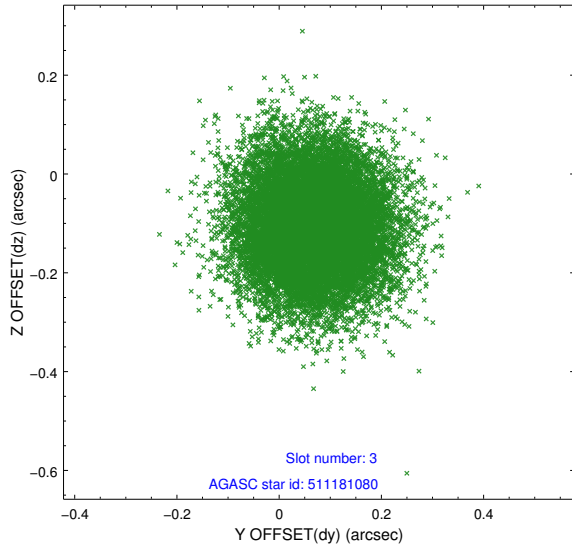


Slot Statistics

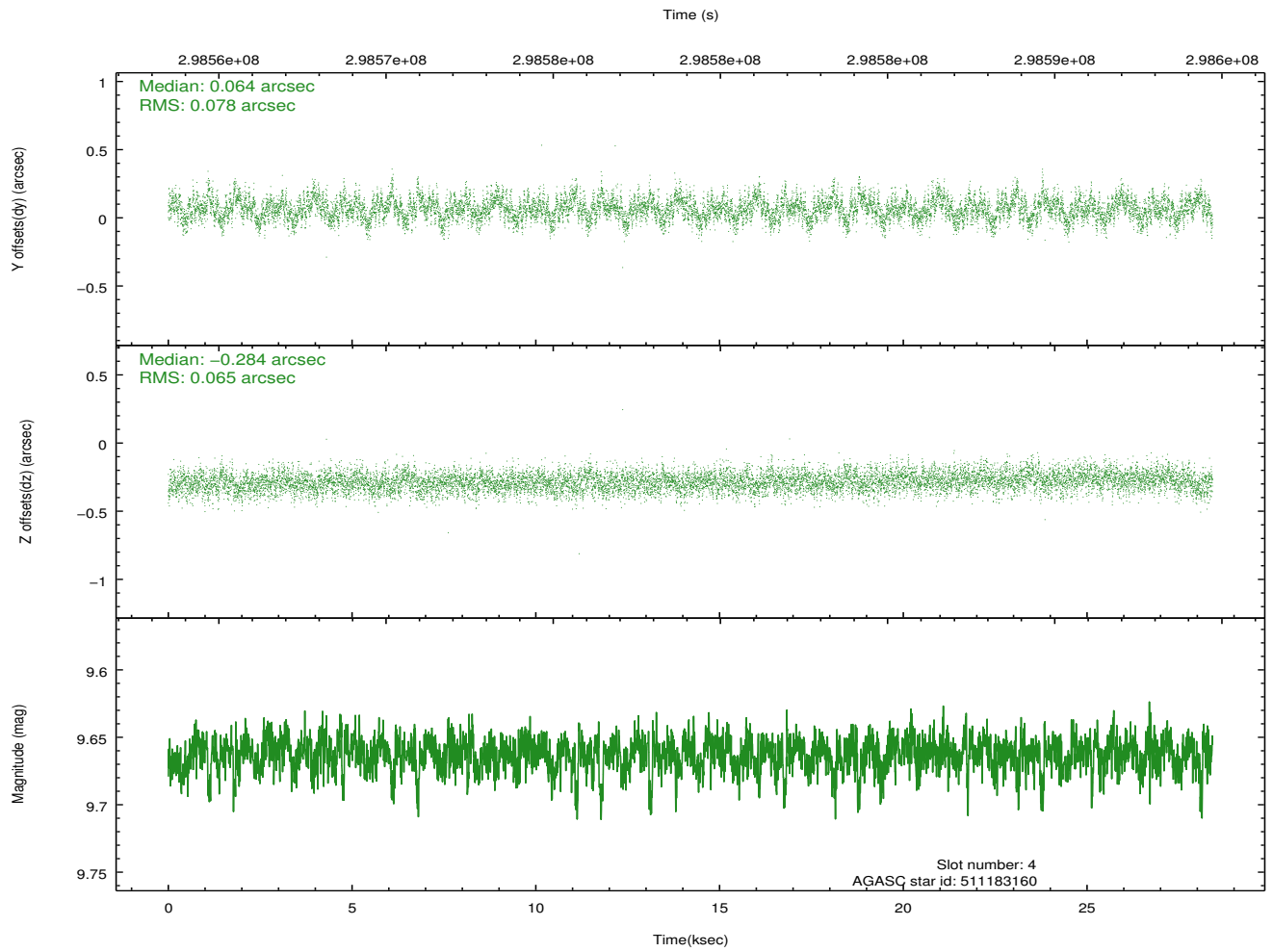
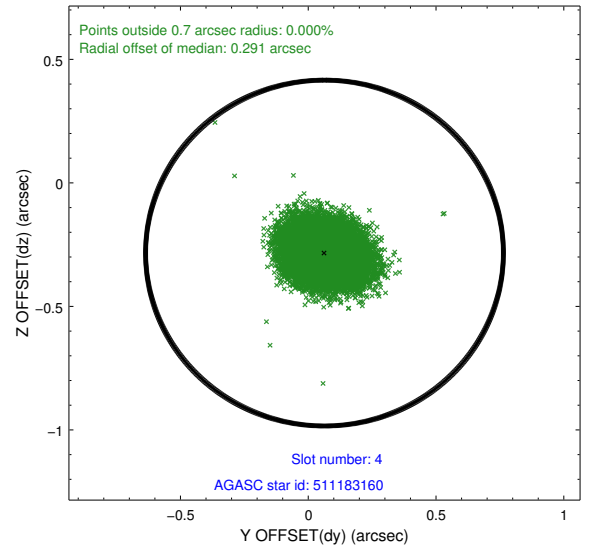
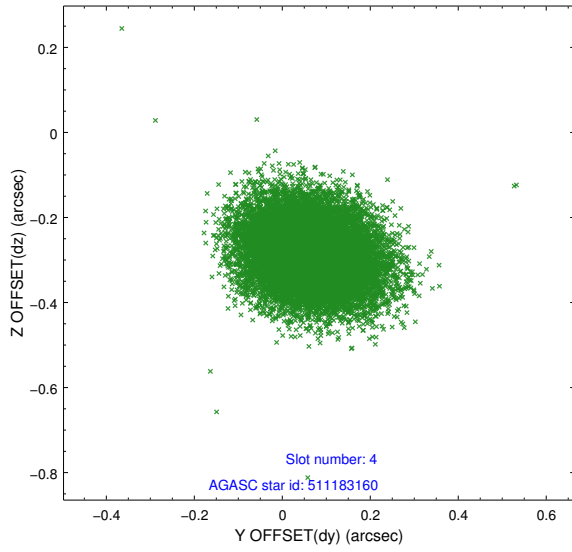
slot	status	id	mag	n_pts	med_dy	med_dz	dr1	dr2	ra	dec	mean_y	mean_z
0	FID	ACIS-I-1	7.23	6931	-0.006	-0.053	0.020	0.033	0.000000	0.000000	926.82	-829.67
1	FID	ACIS-I-4	7.16	6929	0.187	0.063	0.019	0.027	0.000000	0.000000	2147.16	1070.14
2	FID	ACIS-I-5	7.22	6931	-0.279	0.061	0.021	0.031	0.000000	0.000000	-1821.31	1068.19
3	GUIDE	511181080	9.82	13843	0.068	-0.106	0.123	0.198	260.972109	59.782719	-2145.09	1173.52
4	GUIDE	511183160	9.66	13843	0.064	-0.284	0.107	0.176	260.499263	59.520612	-1199.59	2031.18
5	GUIDE	550251704	9.26	13856	0.003	0.136	0.099	0.159	260.624311	60.710937	-1841.07	-2211.27
6	GUIDE	550254760	6.19	13862	-0.061	0.104	0.072	0.121	259.122492	60.670614	806.06	-2353.11
7	GUIDE	550249320	8.36	13849	-0.075	0.153	0.067	0.107	259.166381	60.646604	739.33	-2257.89

2.4 Star Slots

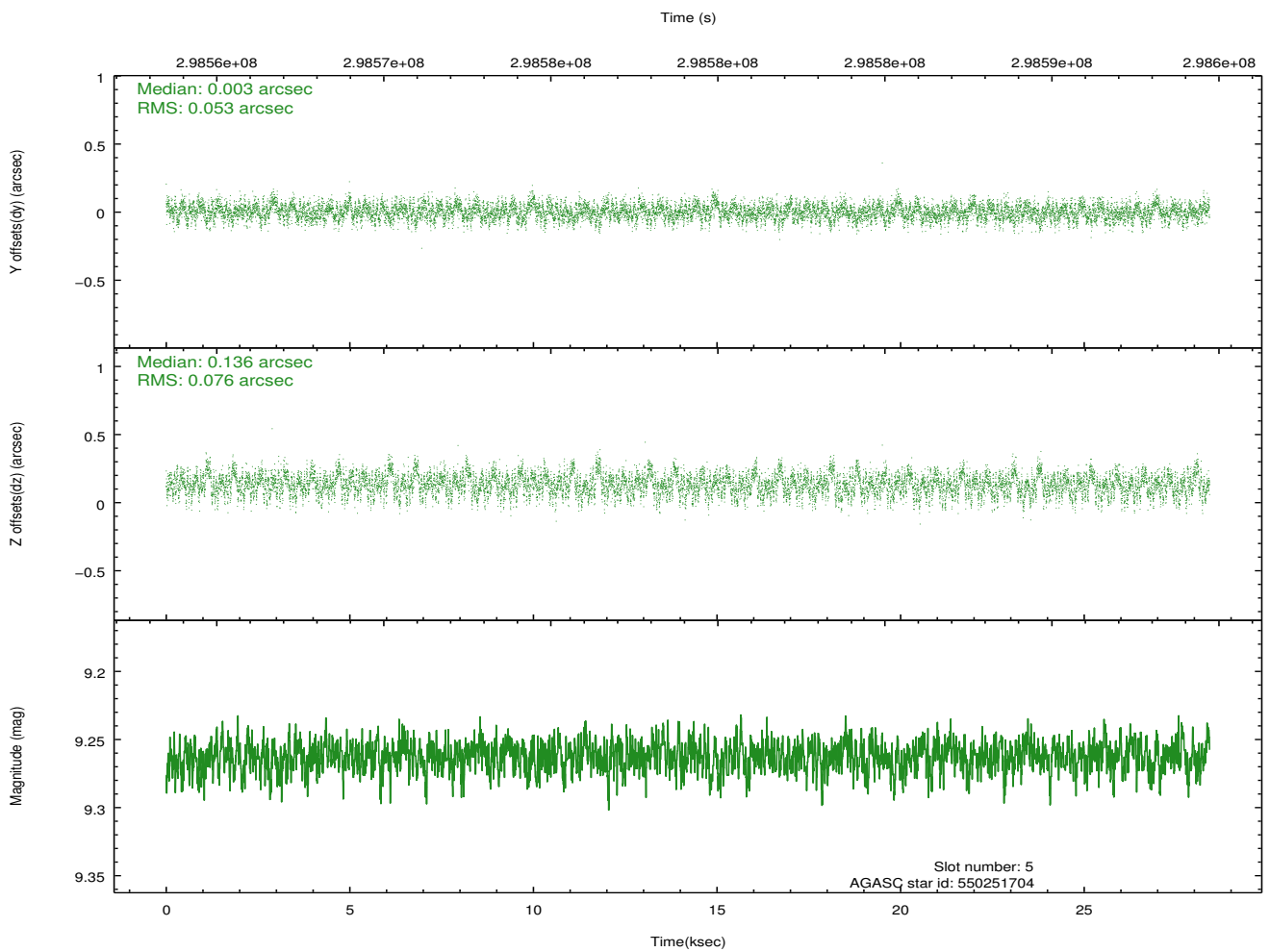
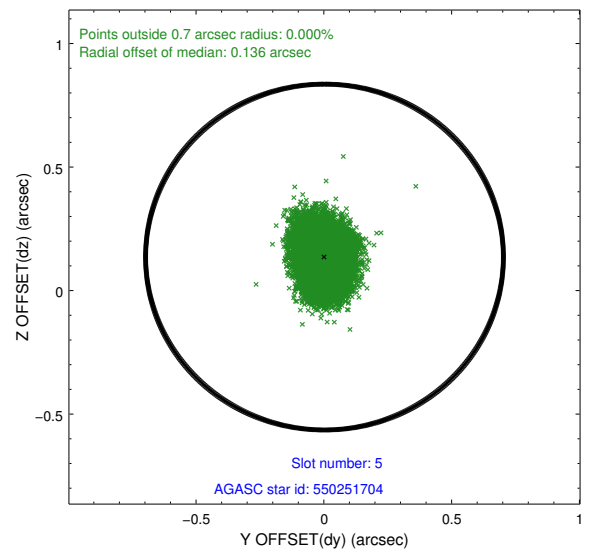
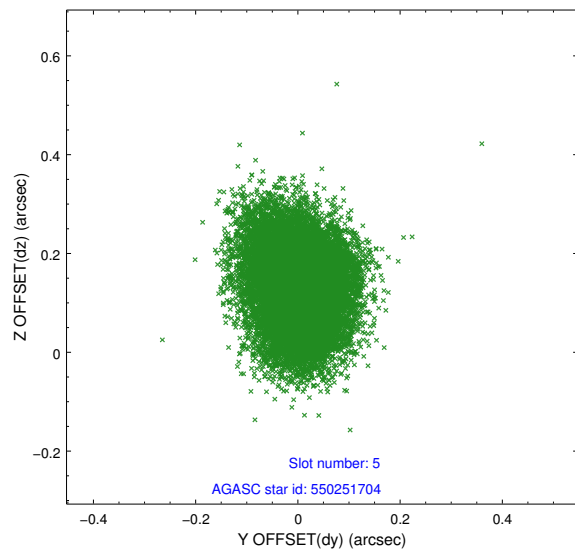
2.4.1 Slot 3



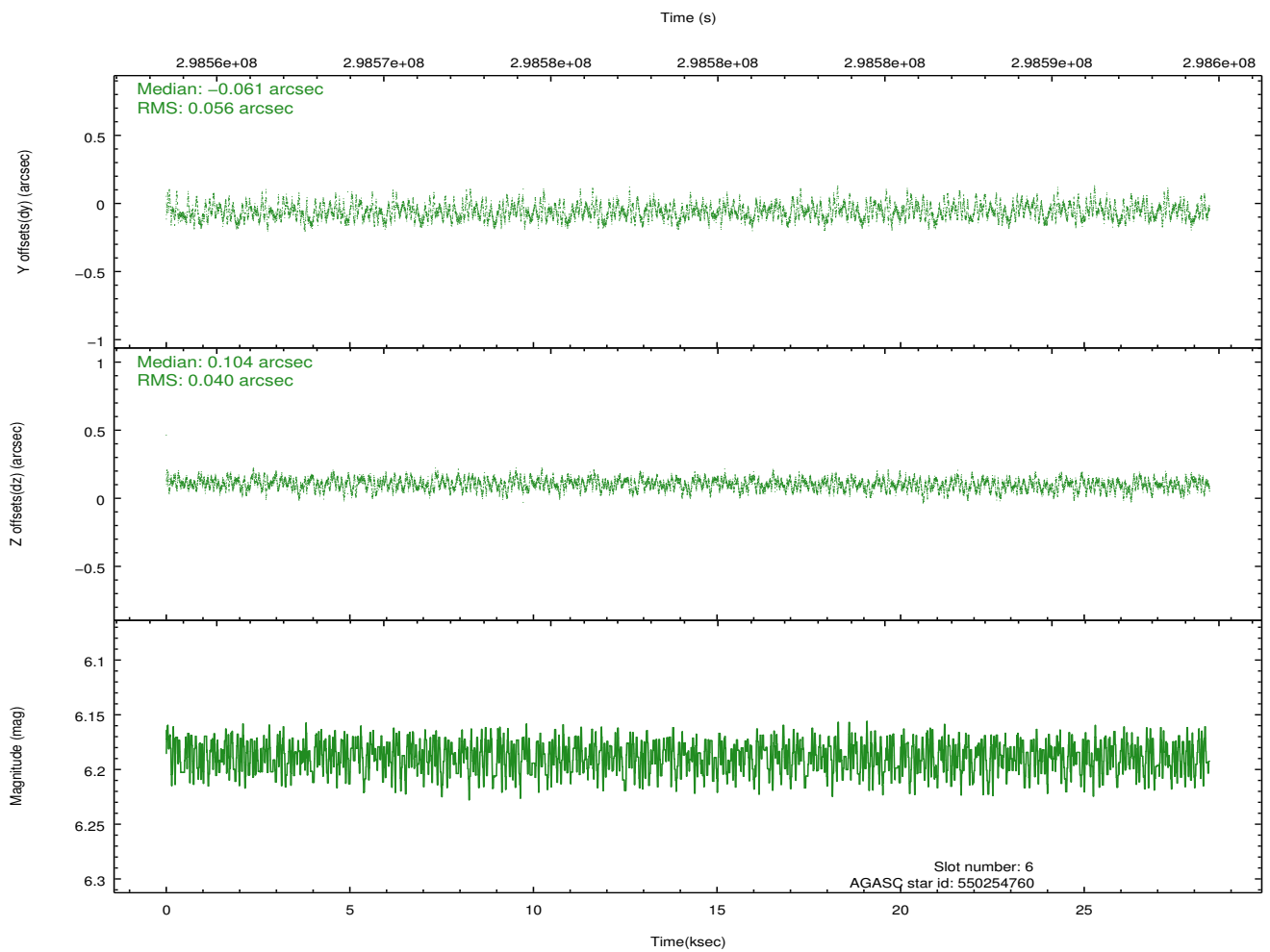
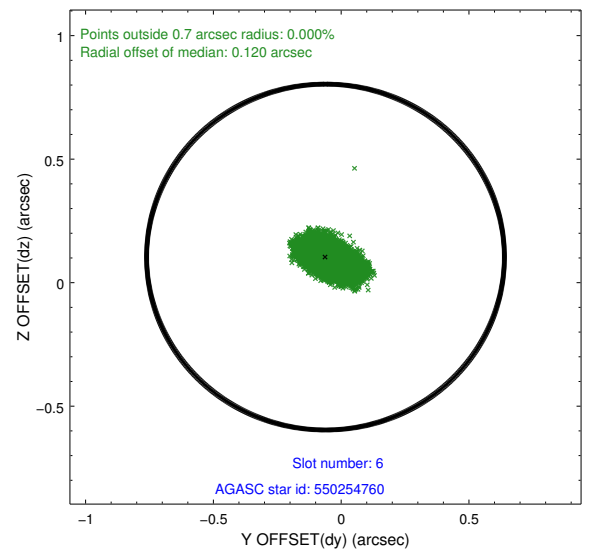
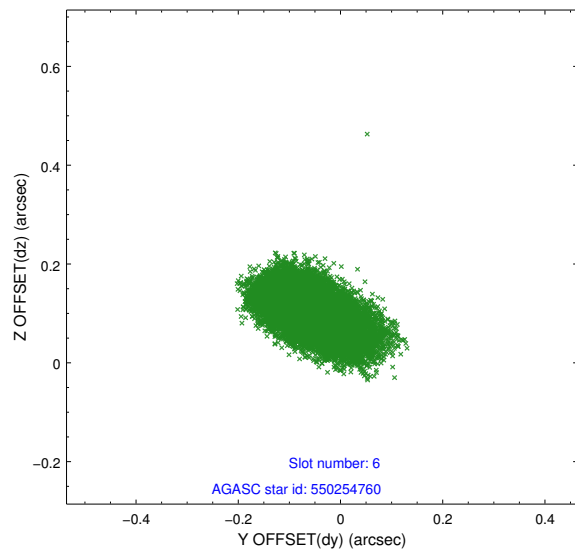
2.4.2 Slot 4



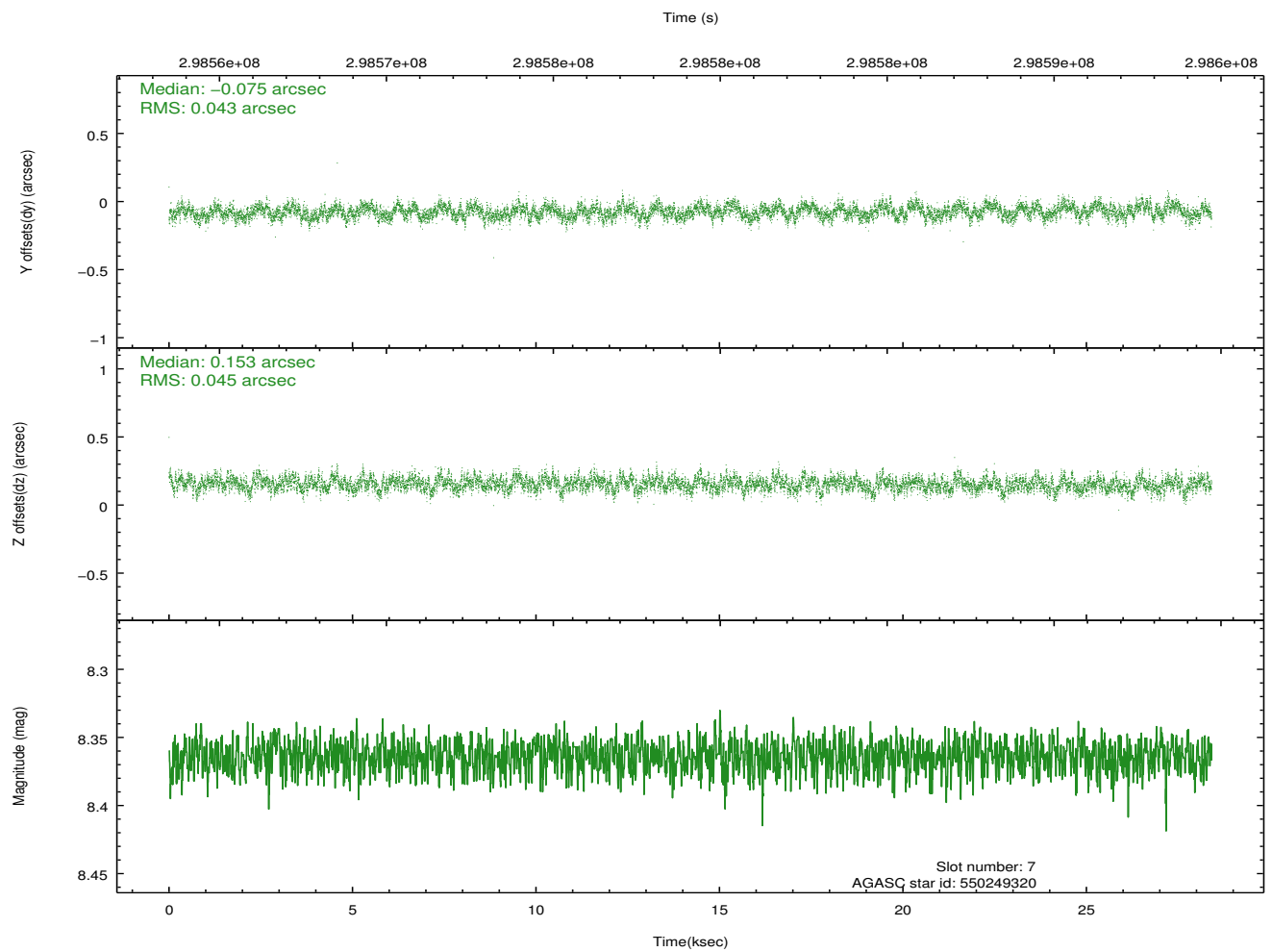
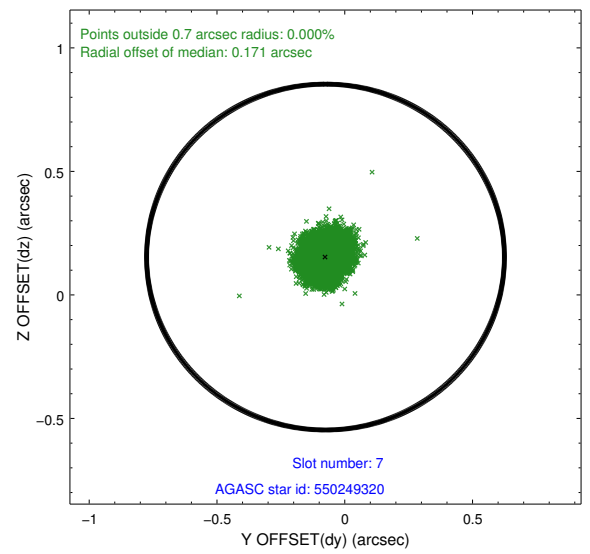
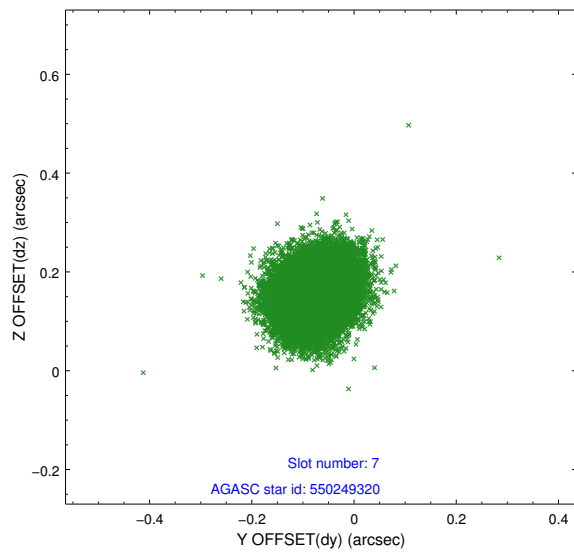
2.4.3 Slot 5



2.4.4 Slot 6

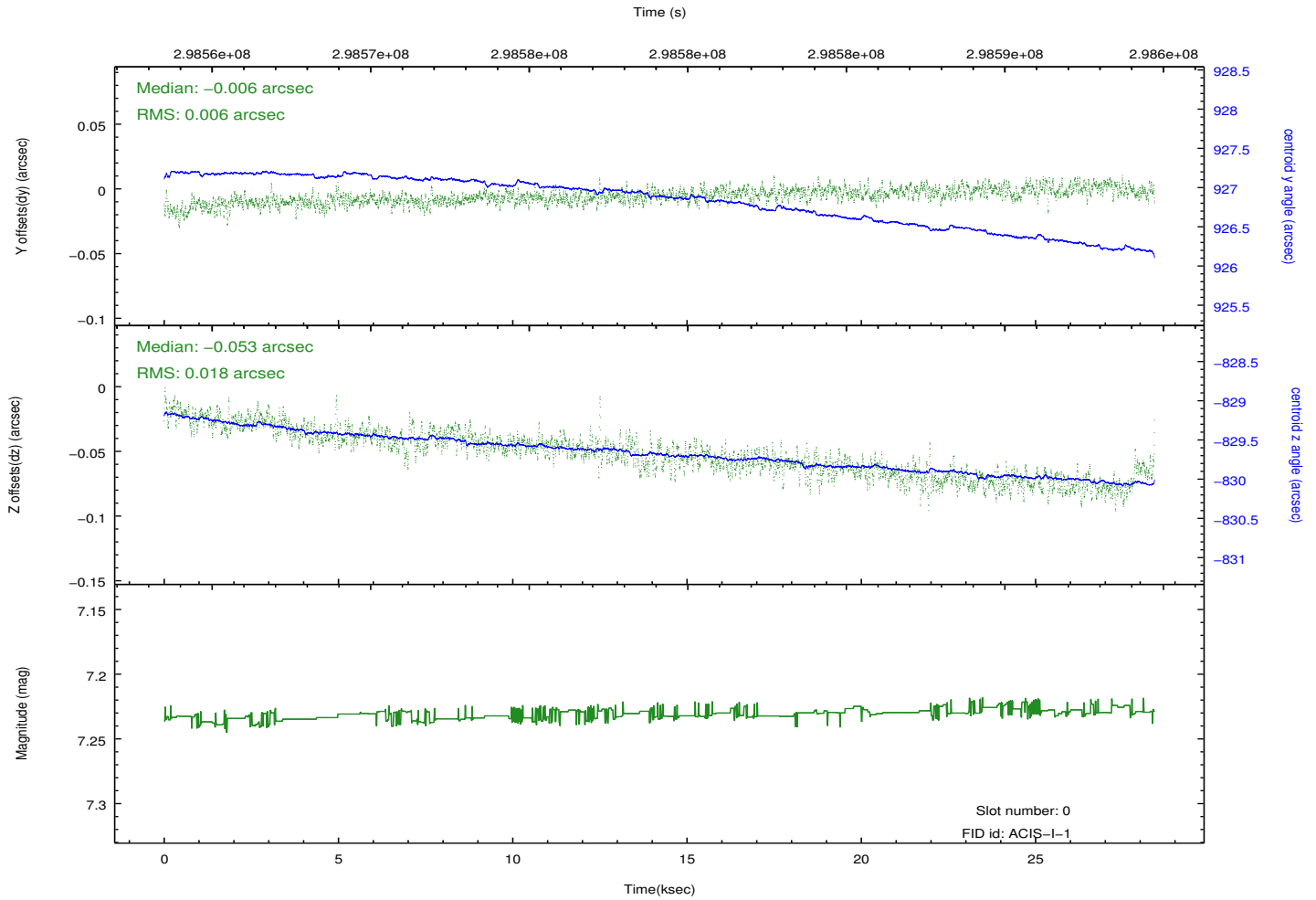
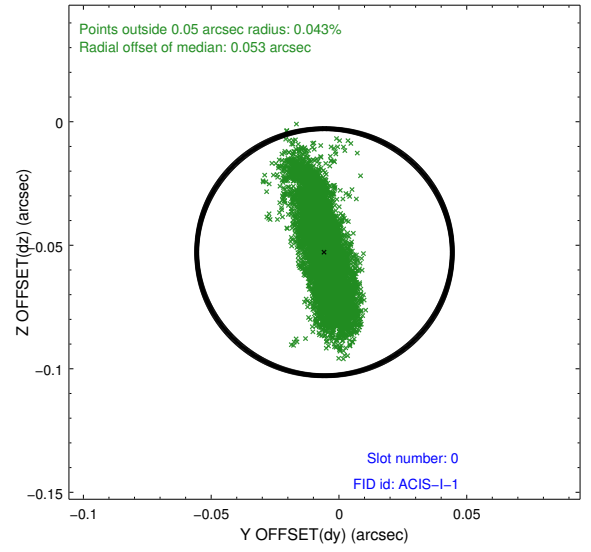
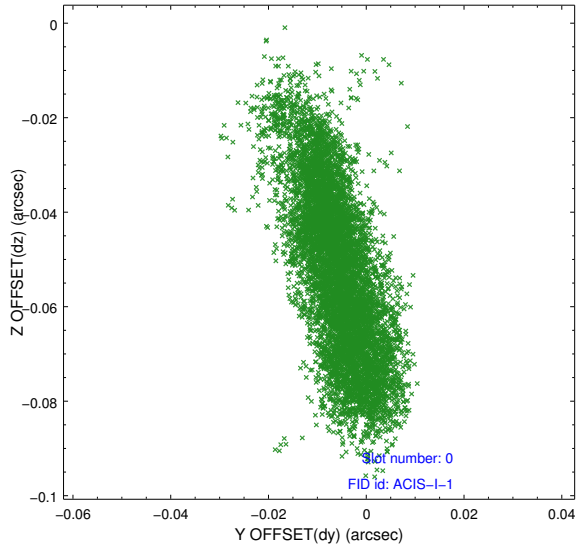


2.4.5 Slot 7

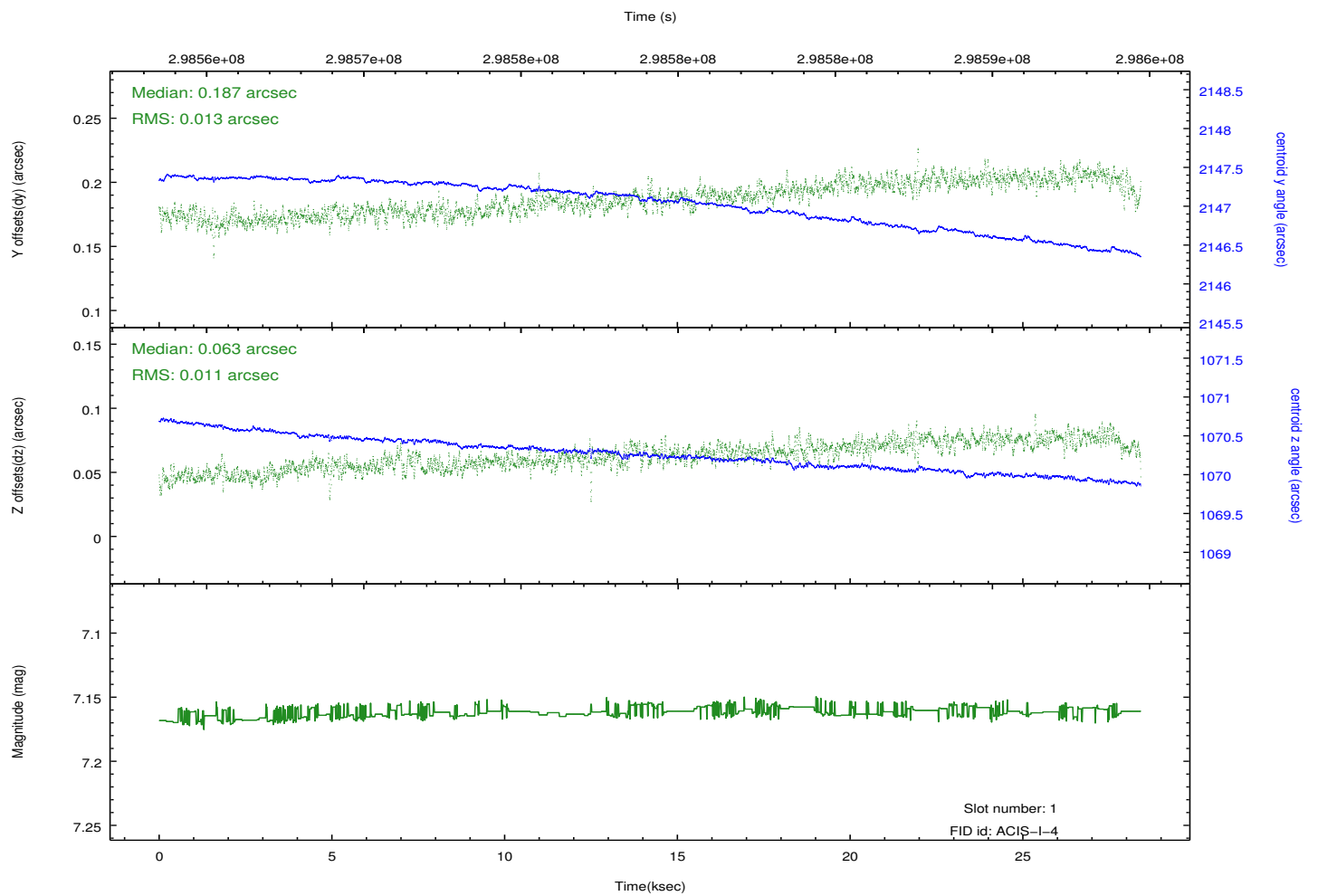
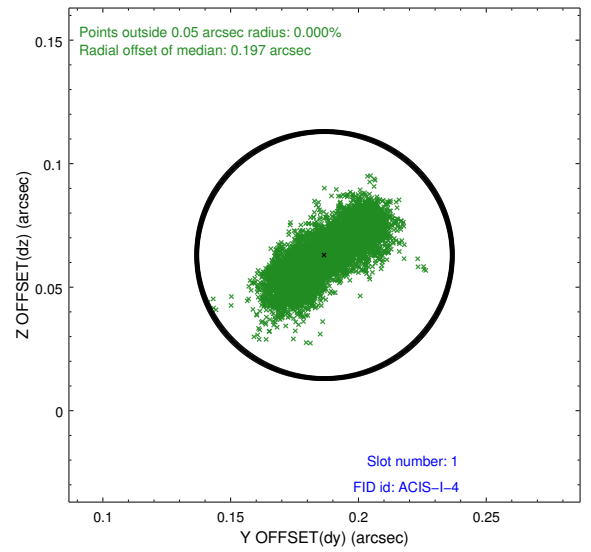
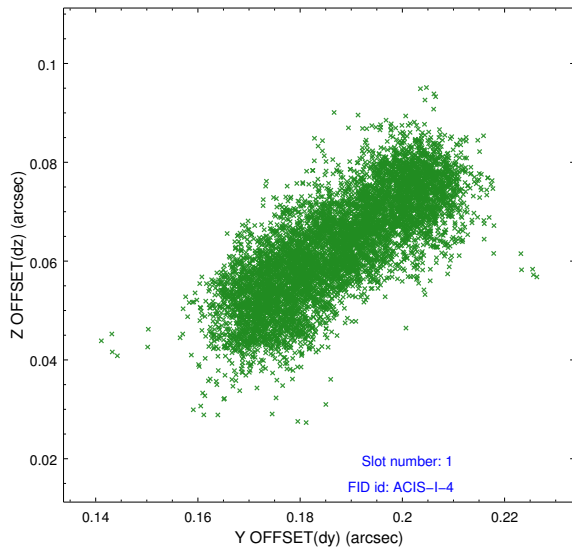


2.5 FID Slots

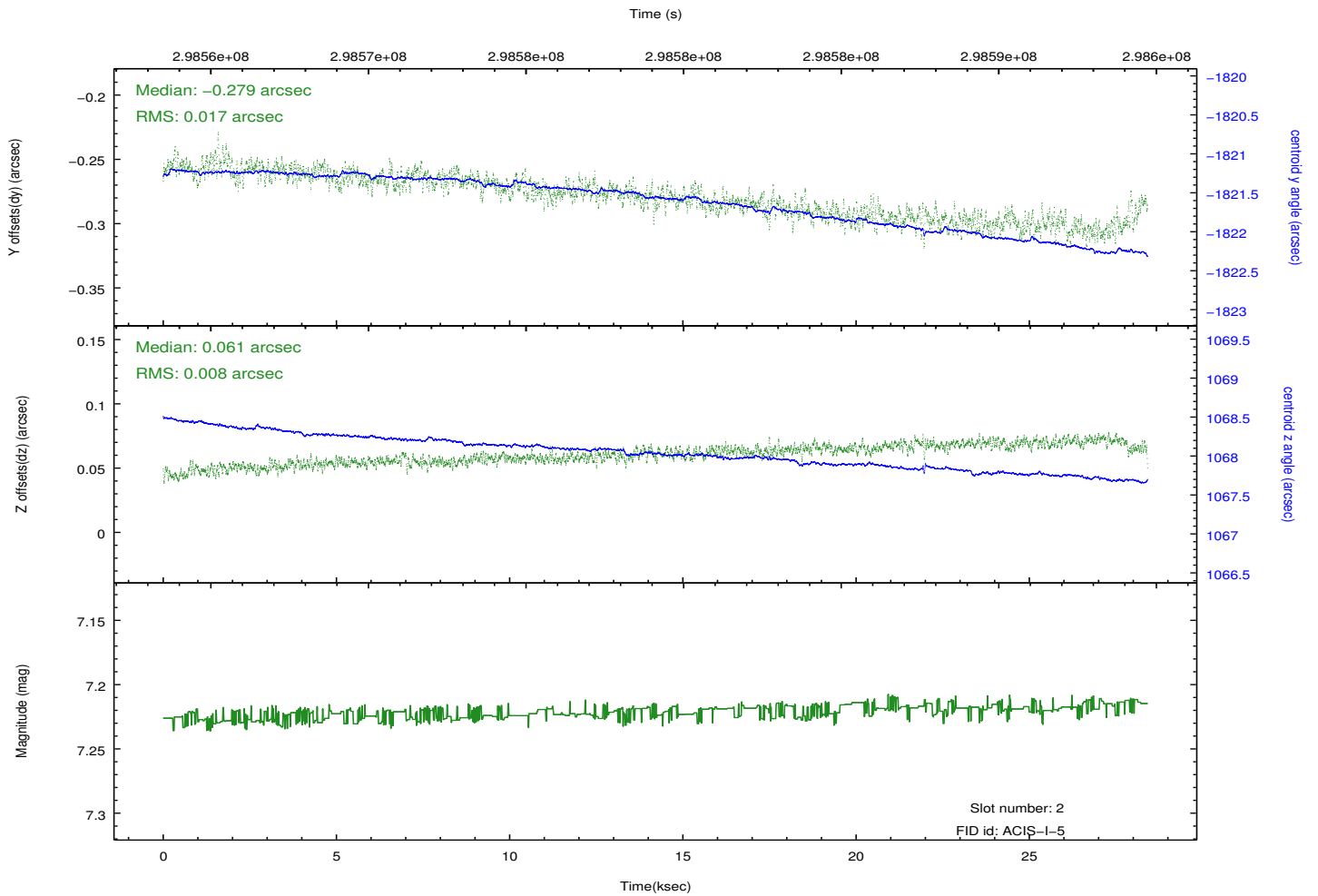
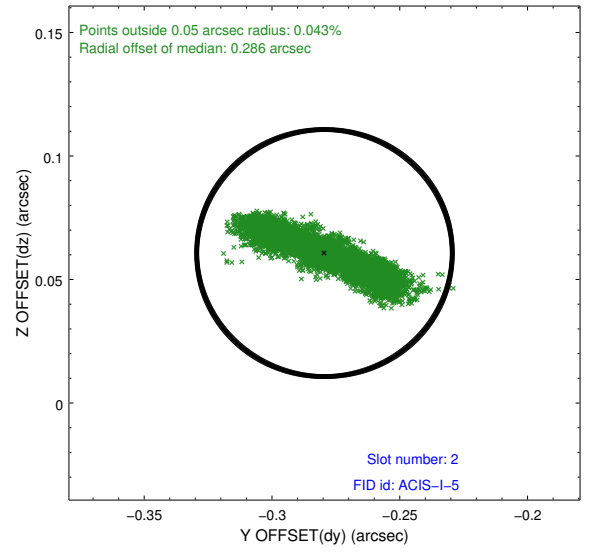
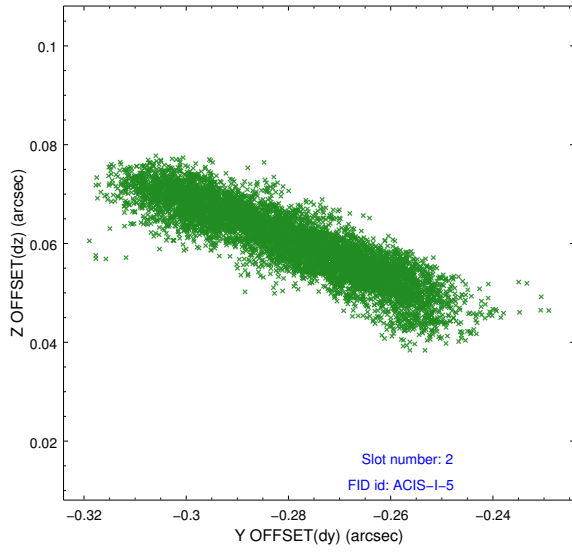
2.5.1 Slot 0



2.5.2 Slot 1



2.5.3 Slot 2



A Summary

A.1 Status

V&V Scientist	Jen Lauer
V&V Date (YYYY-MM-DD)	2012.04.27
V&V Edition	1
V&V Disposition and Status	OK
V&V Charge Time	28.4031179

A.2 Comments