

V&V Reference Report

L2 ASCDS Version : 8.4.4

Observation 7895 - L2 Version 2
Chandra X-Ray Center

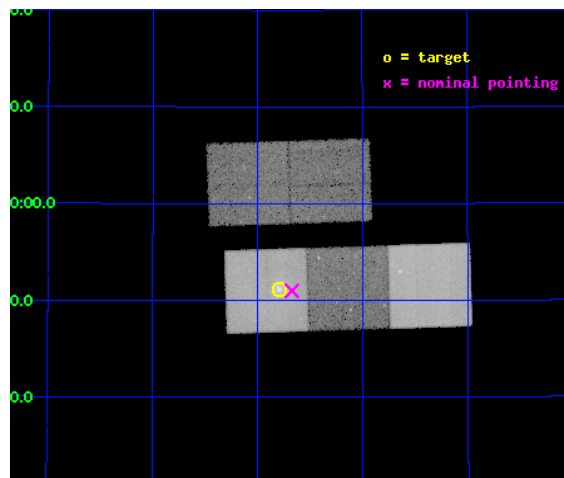
L2 Processing Date : Apr 30 2012

Contents

1	Front	2
2	OBI	3
2.1	OBI	3
2.1.1	Images	3
2.1.2	Bias	3
2.1.3	Parameters	4
2.1.4	Events	4
2.2	Compared Parameters	5
2.3	Aspect	6
2.4	Star Slots	9
2.4.1	Slot 3	9
2.4.2	Slot 4	10
2.4.3	Slot 5	11
2.4.4	Slot 6	12
2.4.5	Slot 7	13
2.5	FID Slots	14
2.5.1	Slot 0	14
2.5.2	Slot 1	15
2.5.3	Slot 2	16
A	Summary	17
A.1	Status	17
A.2	Comments	17

1 Front

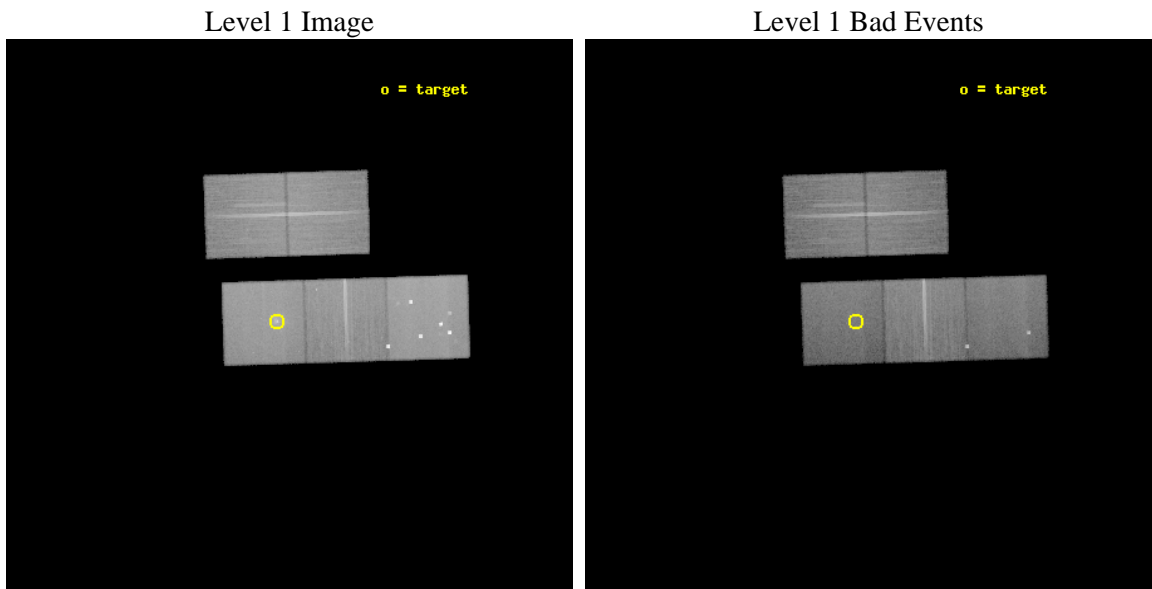
seq_num	800613	Sequence number
obs_id	7895	Observation id
title	The Complex X-ray Morphology of NGC 7618: A Major Group-Group Merger in the Local Universe?	Proposal title
observer	Dr. Stephen Murray	Principal investigator
object	NGC 7618	Source name
dtcycle	0	
cycle	P	events from which exps? Prim/Second/Both
ra_targ	349.946667	Observer's specified target RA [deg]
dec_targ	42.851944	Observer's specified target Dec [deg]
ra_nom	349.91820966601	Nominal RA [deg]
dec_nom	42.85010460094	Nominal Dec [deg]
roll_nom	178.17598528117	Nominal Roll [deg]
revision	2	Processing version of data
ontime	34506.100265384	Sum of GTIs [s]
livetime	34055.252662395	Livetime [s]
ontime2	34506.100265384	Sum of GTIs [s]
ontime3	34499.818284869	Sum of GTIs [s]
ontime5	34506.100265384	Sum of GTIs [s]
ontime6	34490.395383418	Sum of GTIs [s]
ontime7	34506.100265384	Sum of GTIs [s]
l2events	418258	Number of level 2 events



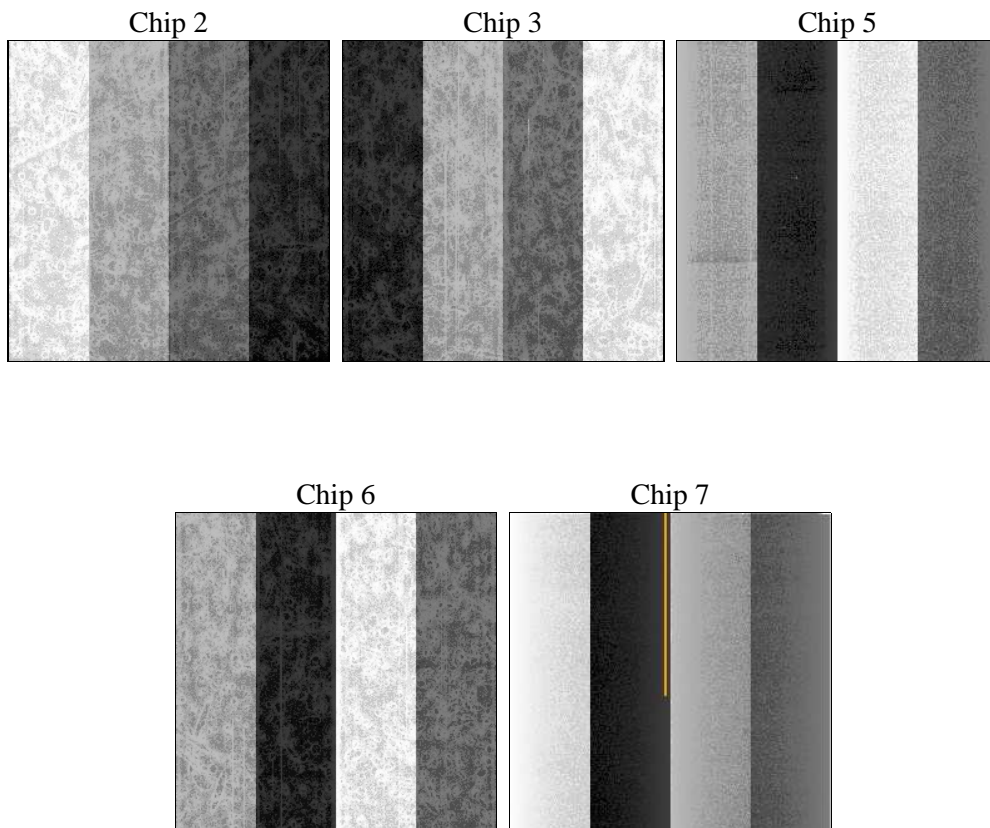
2 OBI

2.1 OBI

2.1.1 Images



2.1.2 Bias



2.1.3 Parameters

obi_num	0	Obi number	sched_exp_time	34731.680000	[s] Scheduled observation exposure time
ascdsver	8.4.4	Processing system revision	ontime	34506.100265384	Sum of GTIs [s]
caldbver	4.4.9	 	ontime2	34506.100265384	Sum of GTIs [s]
date	2012-04-30T15:22:30	Date and time of file creation	ontime3	34499.818284869	Sum of GTIs [s]
revision	2	Processing version of data	ontime5	34506.100265384	Sum of GTIs [s]
			ontime6	34490.395383418	Sum of GTIs [s]
			ontime7	34506.100265384	Sum of GTIs [s]
			l1events	1619912	Number of level 1 events

2.1.4 Events

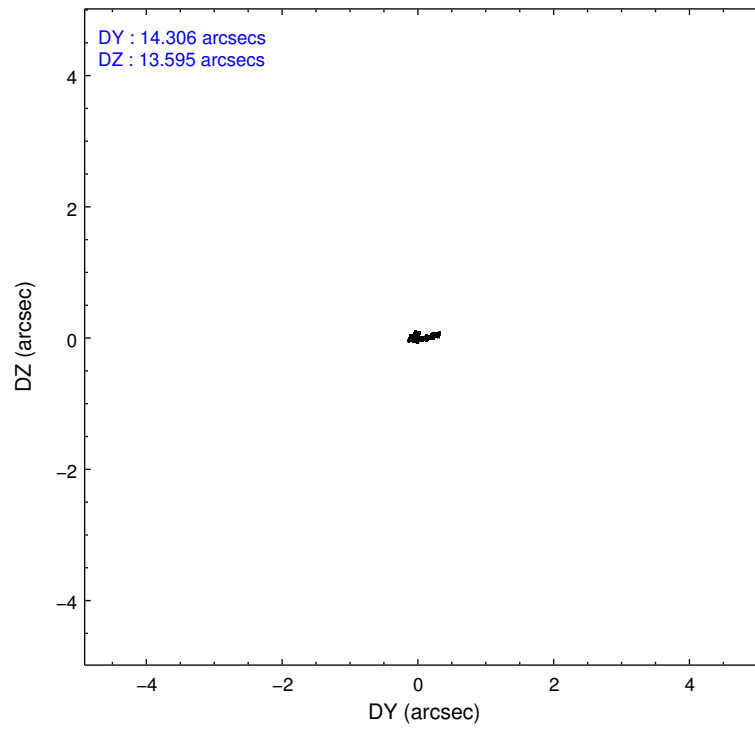
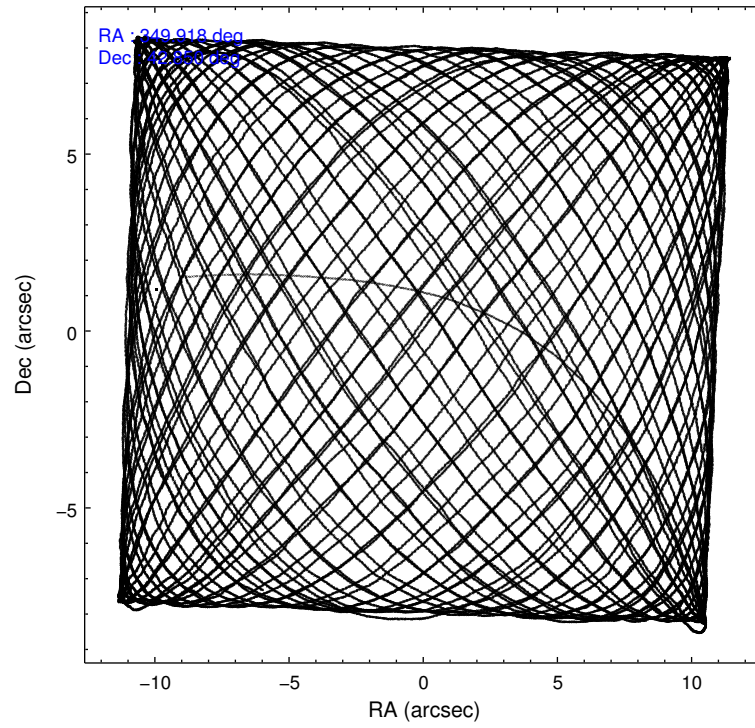
	ccd 2	ccd 3	ccd 5	ccd 6	ccd 7
level 1 events	285025	274995	439737	289220	330935
rejected events	255451	247387	197948	256753	169432
rejected %	89%	89%	45%	88%	51%

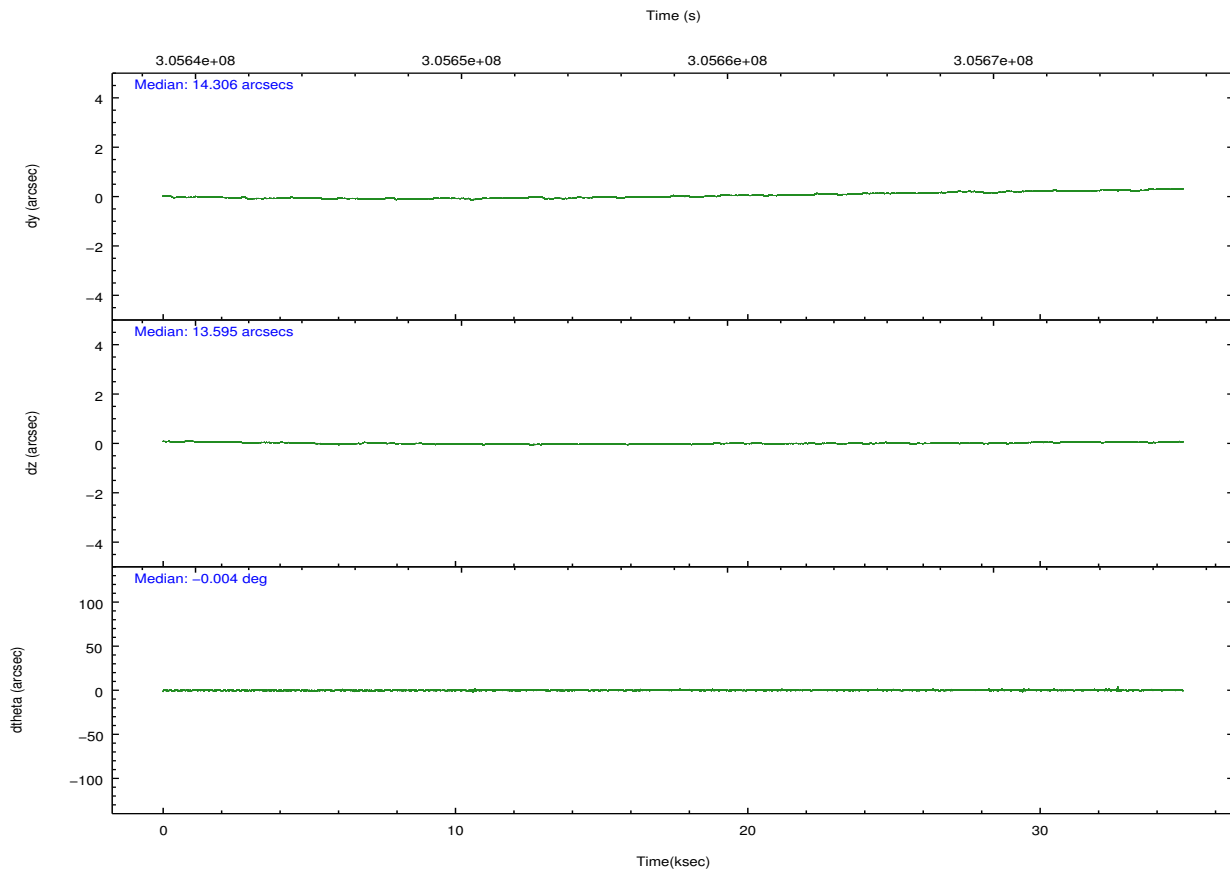
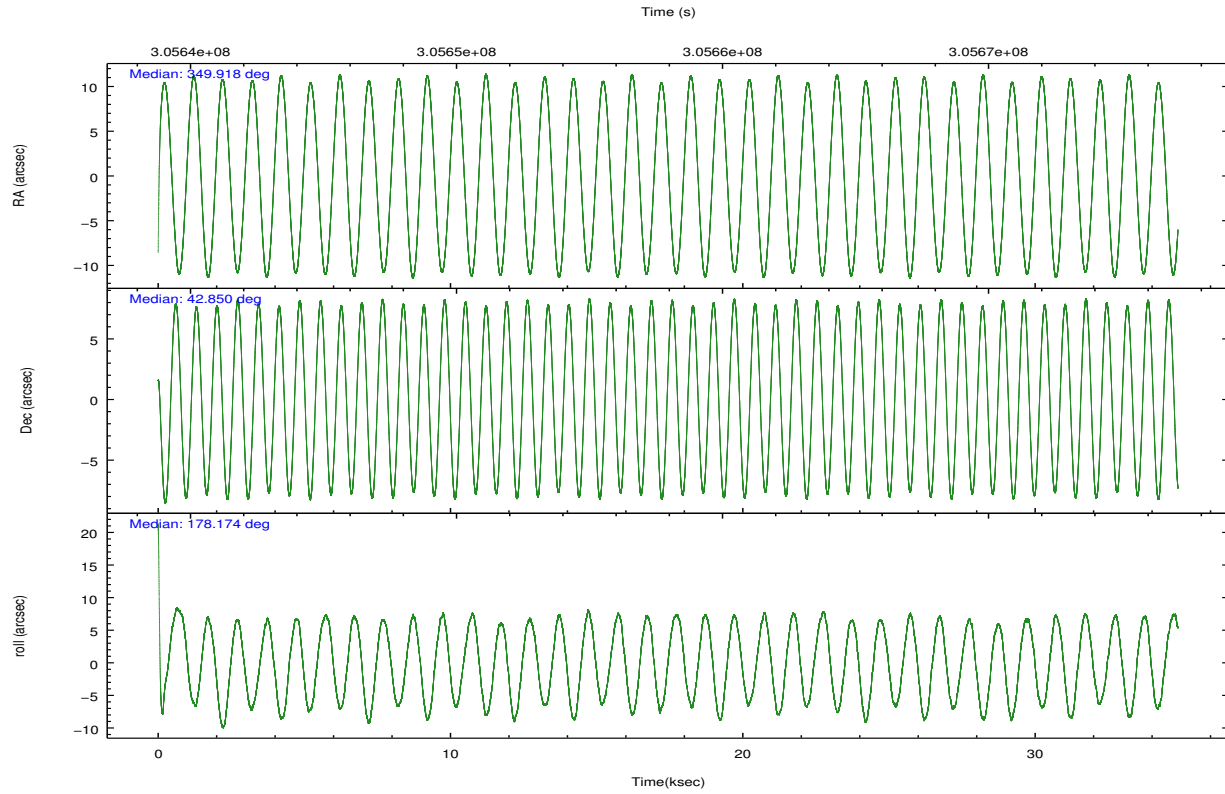
	ccd 2	ccd 3	ccd 5	ccd 6	ccd 7
grade 0 events	12038	10700	51594	13245	19536
	4%	3%	11%	4%	5%
grade 1 events	173	162	2972	135	370
	0%	0%	0%	0%	0%
grade 2 events	6478	5581	64833	6581	34113
	2%	2%	14%	2%	10%
grade 3 events	2994	3129	10488	3299	15273
	1%	1%	2%	1%	4%
grade 4 events	2924	3041	10060	3126	14909
	1%	1%	2%	1%	4%
grade 5 events	8700	10766	31581	11165	32440
	3%	3%	7%	3%	9%
grade 6 events	5145	5161	104830	6217	77683
	1%	1%	23%	2%	23%
grade 7 events	246573	236455	163379	245452	136611
	86%	85%	37%	84%	41%

2.2 Compared Parameters

Parameter	Planned	Actual	Parameter	Planned	Actual
Instrument	ACIS	ACIS	Obspar format version number	7	7
Detector	ACIS-23567	ACIS-23567	Obspar file type	PREDICTED	ACTUAL
Grating	NONE	NONE	Obspar update status	NONE	UPDATED
Data mode	VFAINT	VFAINT	CCD I0 on	N	N
Observation mode	POINTING	POINTING	CCD I1 on	N	N
[deg] Pointing RA	349.950845	349.9182096660102	CCD I2 on	O1	Y
[deg] Pointing Dec	42.863344	42.85010460094033	CCD I3 on	O2	Y
[deg] Pointing Roll	177.997147	178.1759852811739	CCD S0 on	N	N
[mm] SIM focus pos	-0.684267	-0.6828225247311905	CCD S1 on	Y	Y
[mm] SIM defocus	0	0.001444936568705701	CCD S2 on	Y	Y
[mm] SIM translation stage pos	-190.132523	-190.1400660498719	CCD S3 on	Y	Y
[mm] SIM translation stage offset	0	0.00754346686406393	CCD S4 on	N	N
[s] Observation start time (MET)	305640666.184000	305639531.92543	CCD S5 on	N	N
Observation start date	2007-09-08T12:10:01	2007-09-08T11:52:11	Number of optional ACIS chips dropped	0	0
[s] Observation end time (MET)	305675397.184000	305675610.90216	On-chip summing requested	N	N
Observation end date	2007-09-08T21:48:52	2007-09-08T21:53:30	Subarray requested	NONE	NONE
Read mode	TIMED	TIMED	Alternating exposures requested	N	N
			[s] Primary exposure time	0.000000	3.1

2.3 Aspect



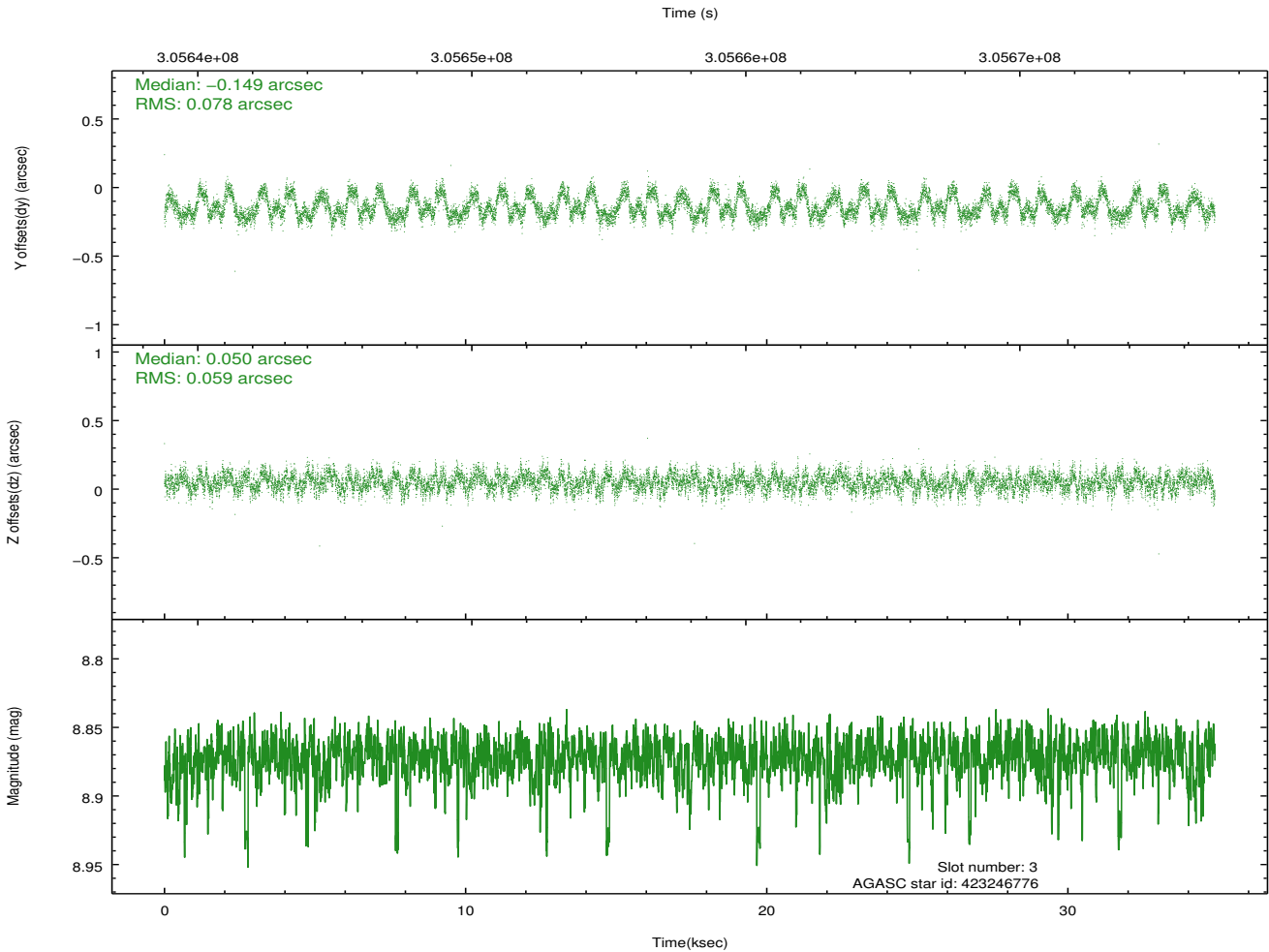
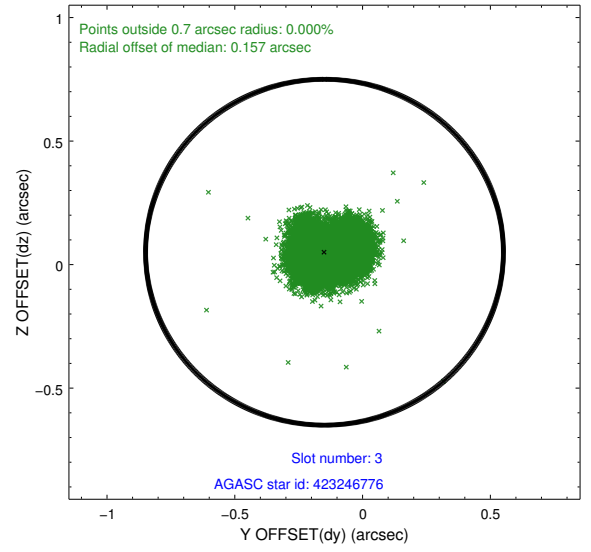
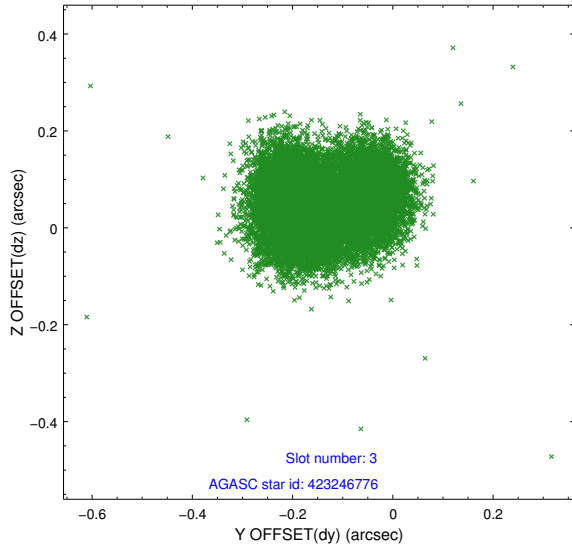


Slot Statistics

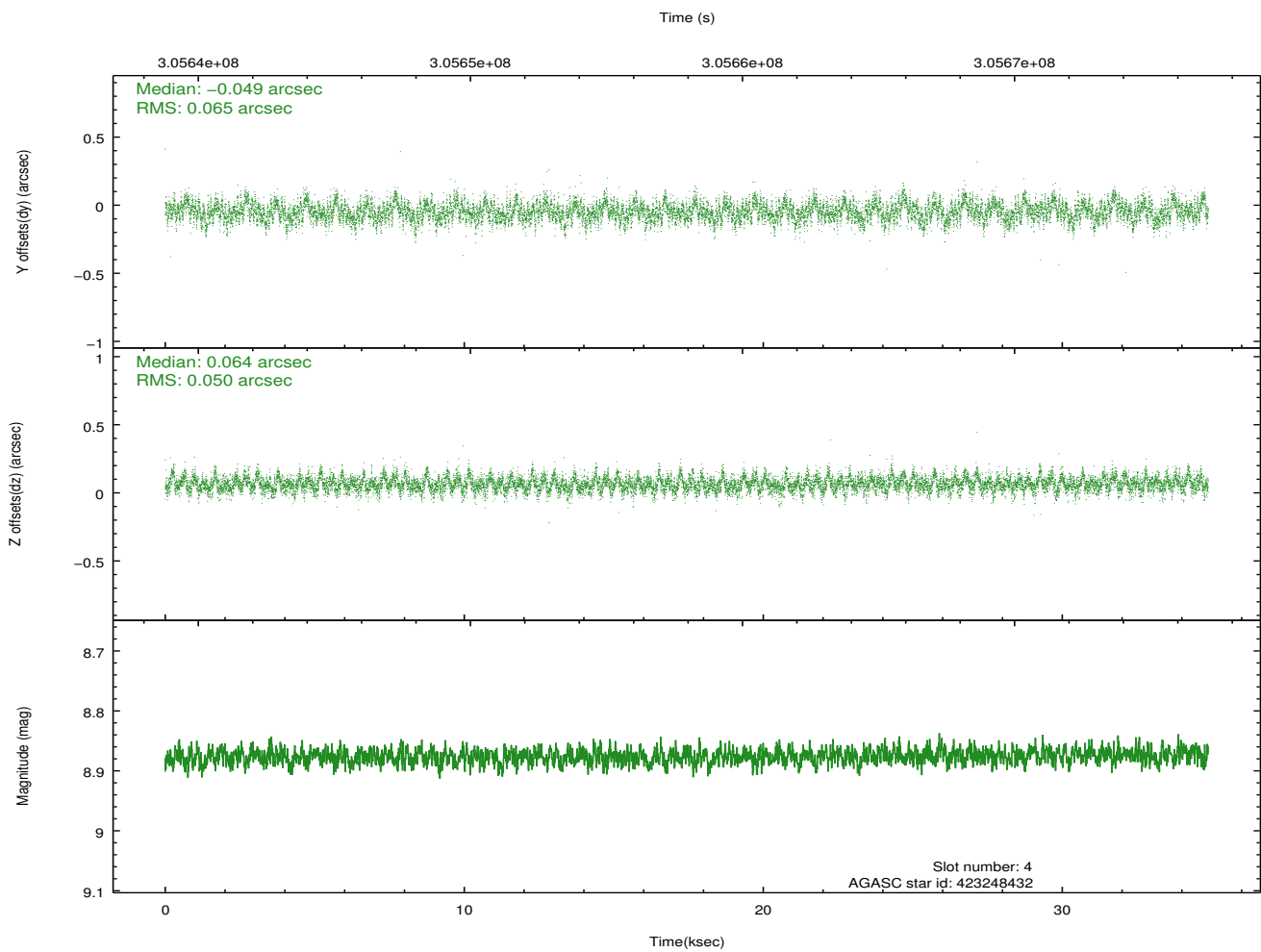
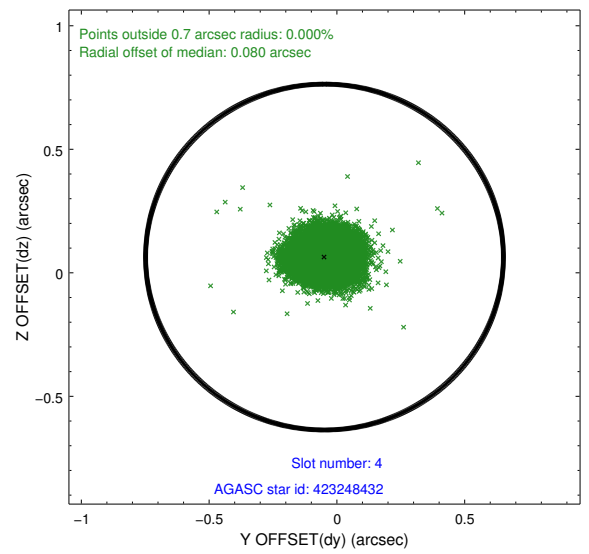
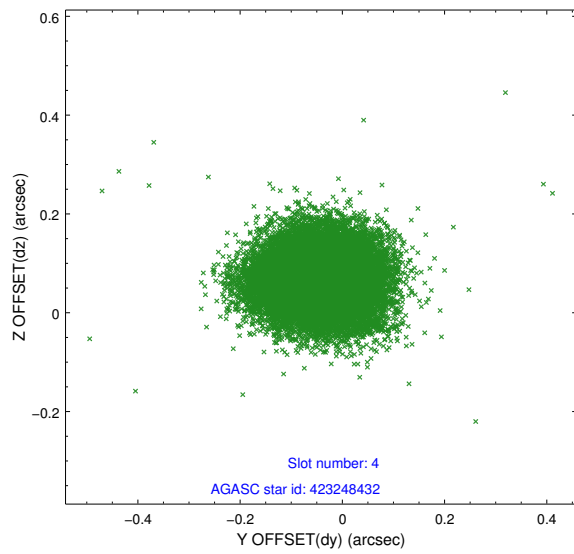
slot	status	id	mag	n_pts	med_dy	med_dz	dr1	dr2	ra	dec	mean_y	mean_z
0	FID	ACIS-S-2	7.10	8509	-0.068	-0.072	0.008	0.012	0.000000	0.000000	-767.39	-1735.01
1	FID	ACIS-S-4	7.19	8509	0.208	0.052	0.007	0.012	0.000000	0.000000	2146.16	173.53
2	FID	ACIS-S-5	7.22	8508	-0.171	0.029	0.007	0.011	0.000000	0.000000	-1820.26	167.26
3	GUIDE	423246776	8.87	16987	-0.149	0.050	0.106	0.163	349.847786	43.424046	340.38	-2007.70
4	GUIDE	423248432	8.88	17005	-0.049	0.064	0.087	0.140	349.086899	43.199426	2309.17	-1141.30
5	GUIDE	424938224	8.82	16998	0.185	-0.142	0.075	0.120	350.059175	43.180030	-243.42	-1149.42
6	GUIDE	423239648	8.32	17012	0.007	-0.011	0.081	0.128	349.461087	43.553312	1364.53	-2440.99
7	GUIDE	424936496	9.32	17001	-0.013	0.035	0.093	0.148	350.792053	43.521559	-2110.74	-2455.84

2.4 Star Slots

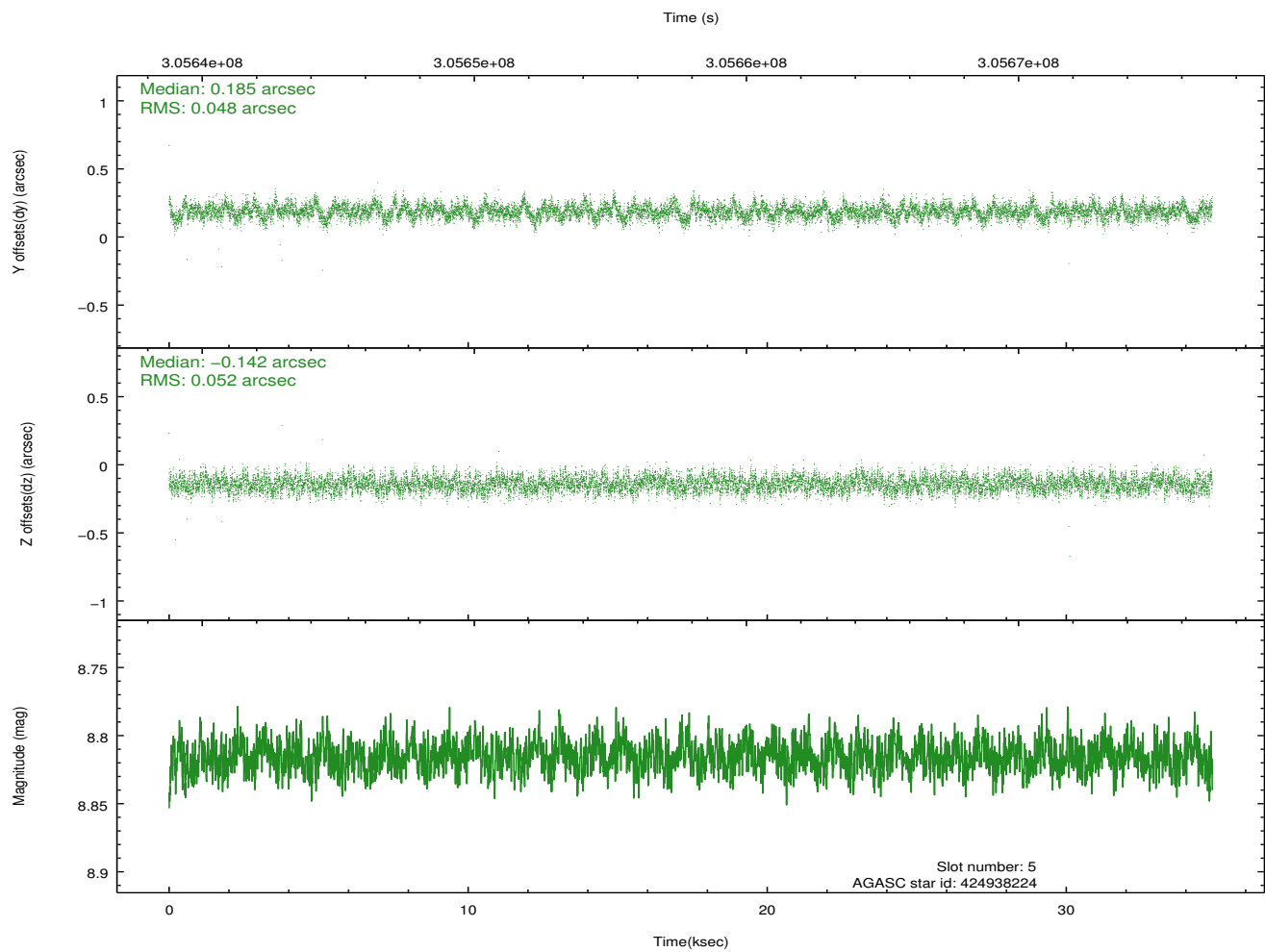
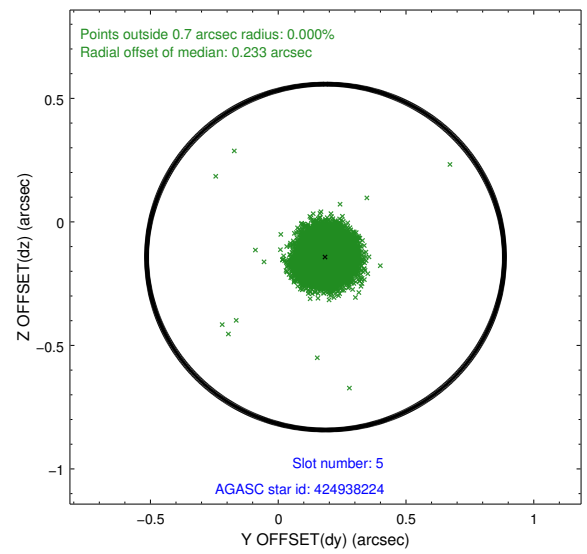
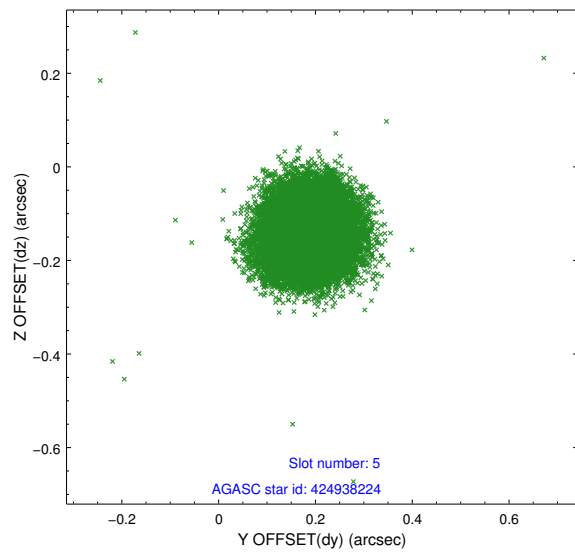
2.4.1 Slot 3



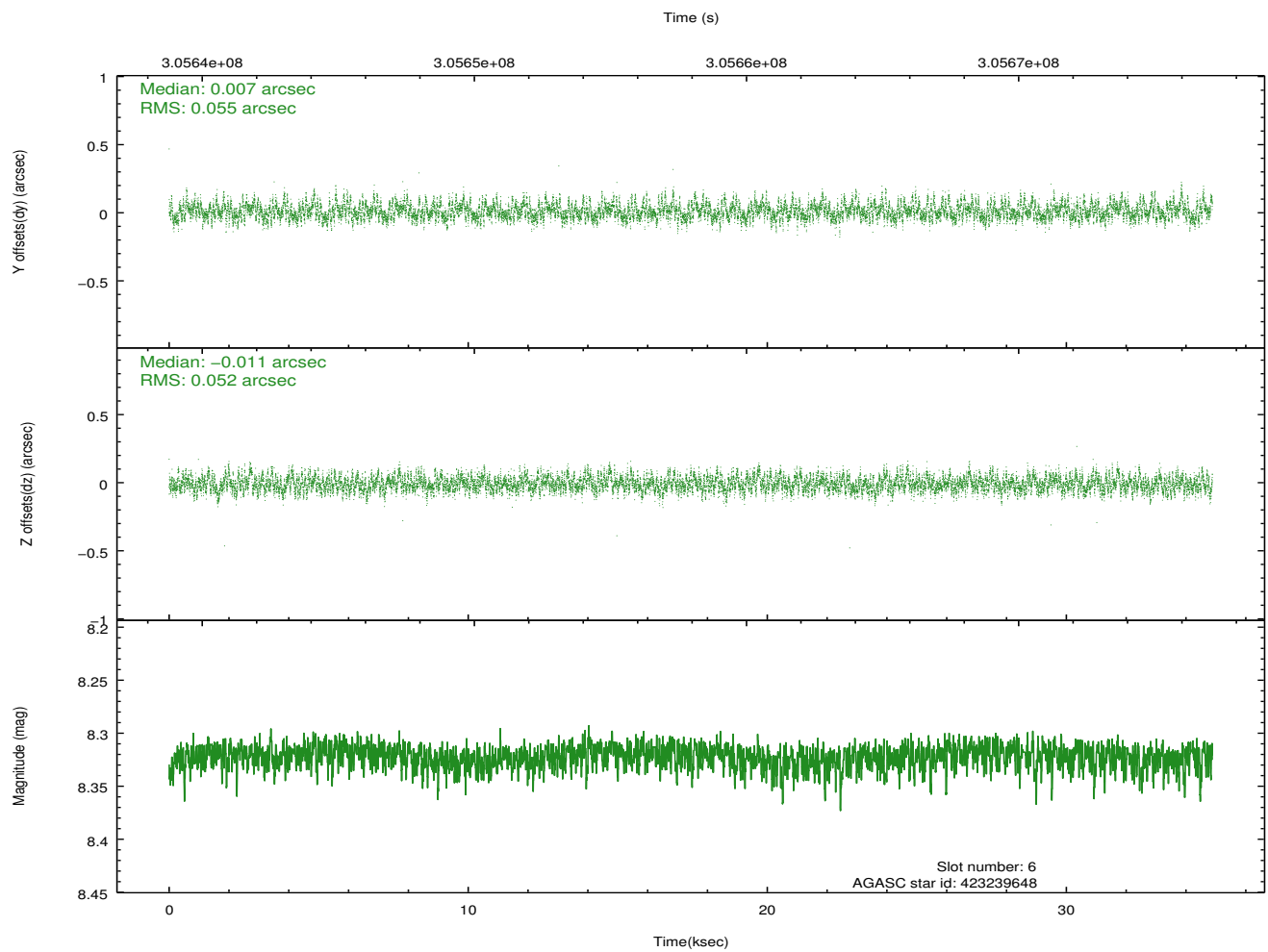
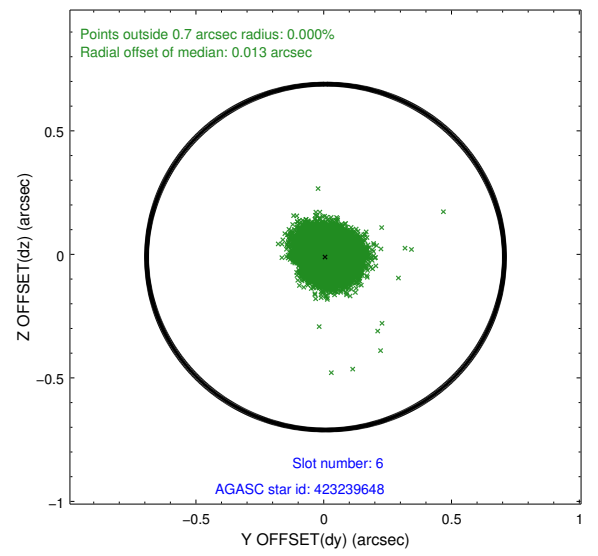
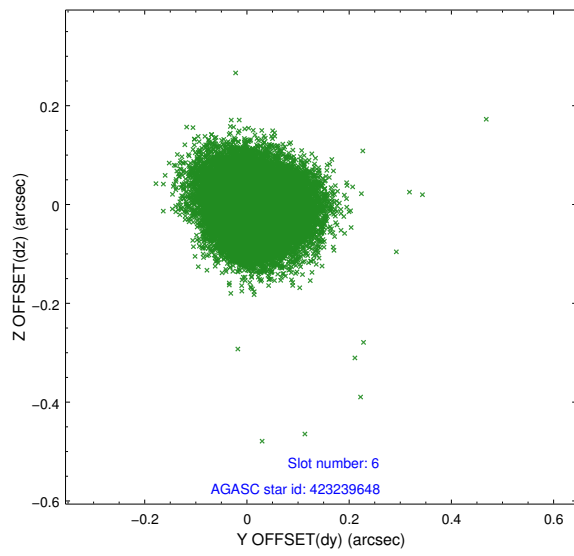
2.4.2 Slot 4



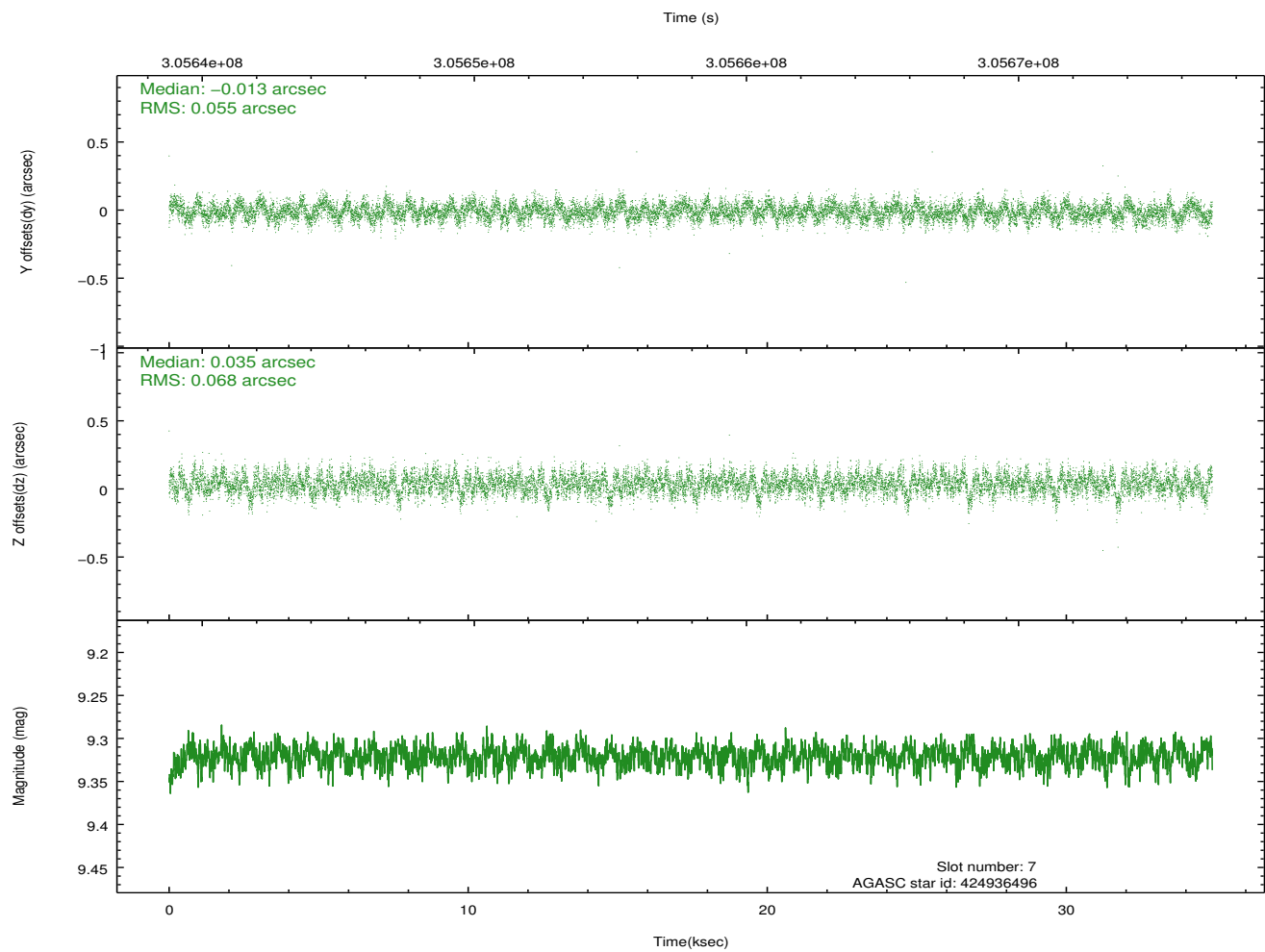
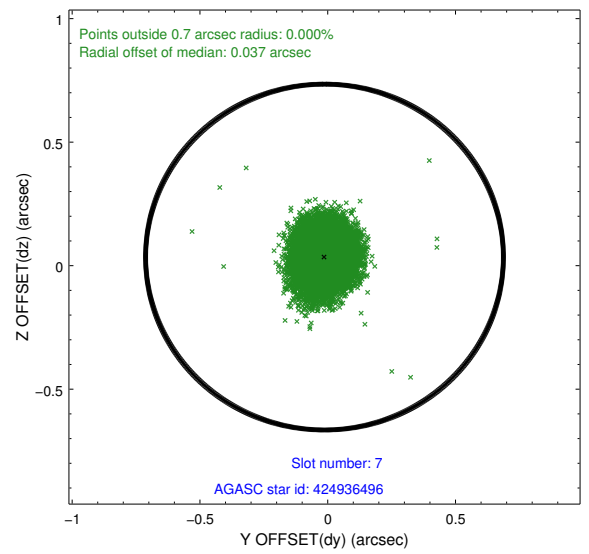
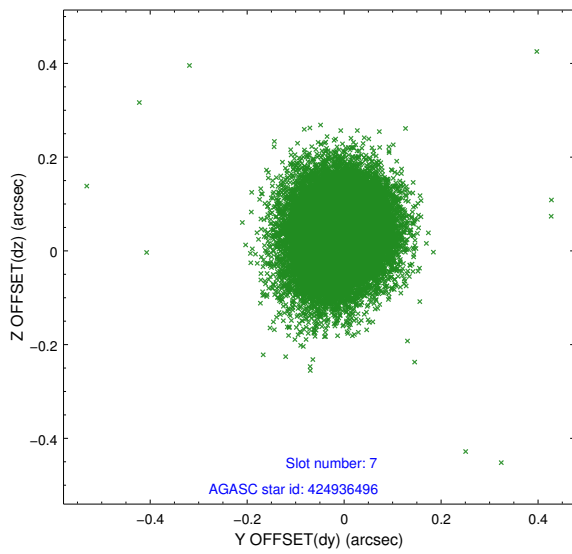
2.4.3 Slot 5



2.4.4 Slot 6

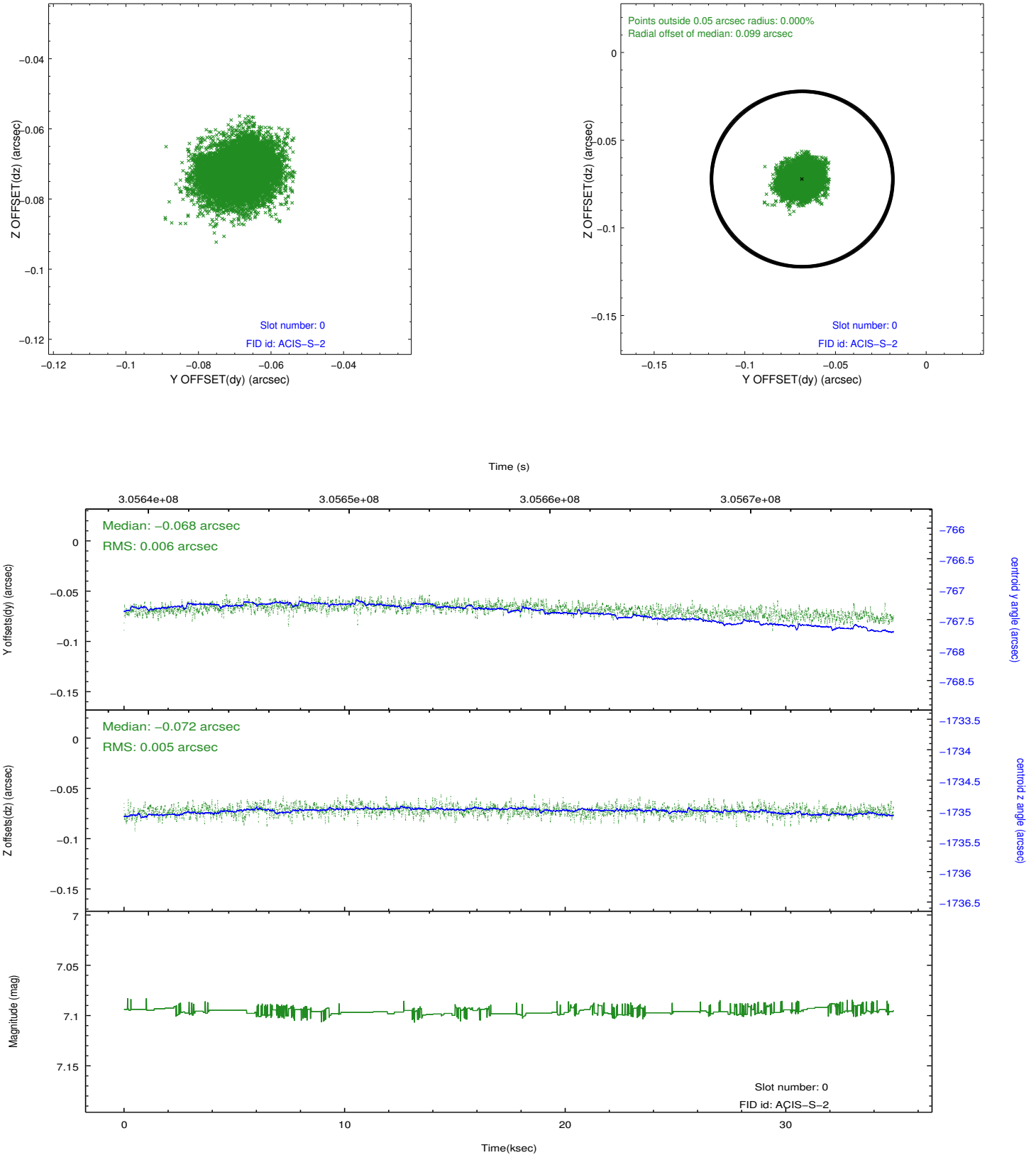


2.4.5 Slot 7

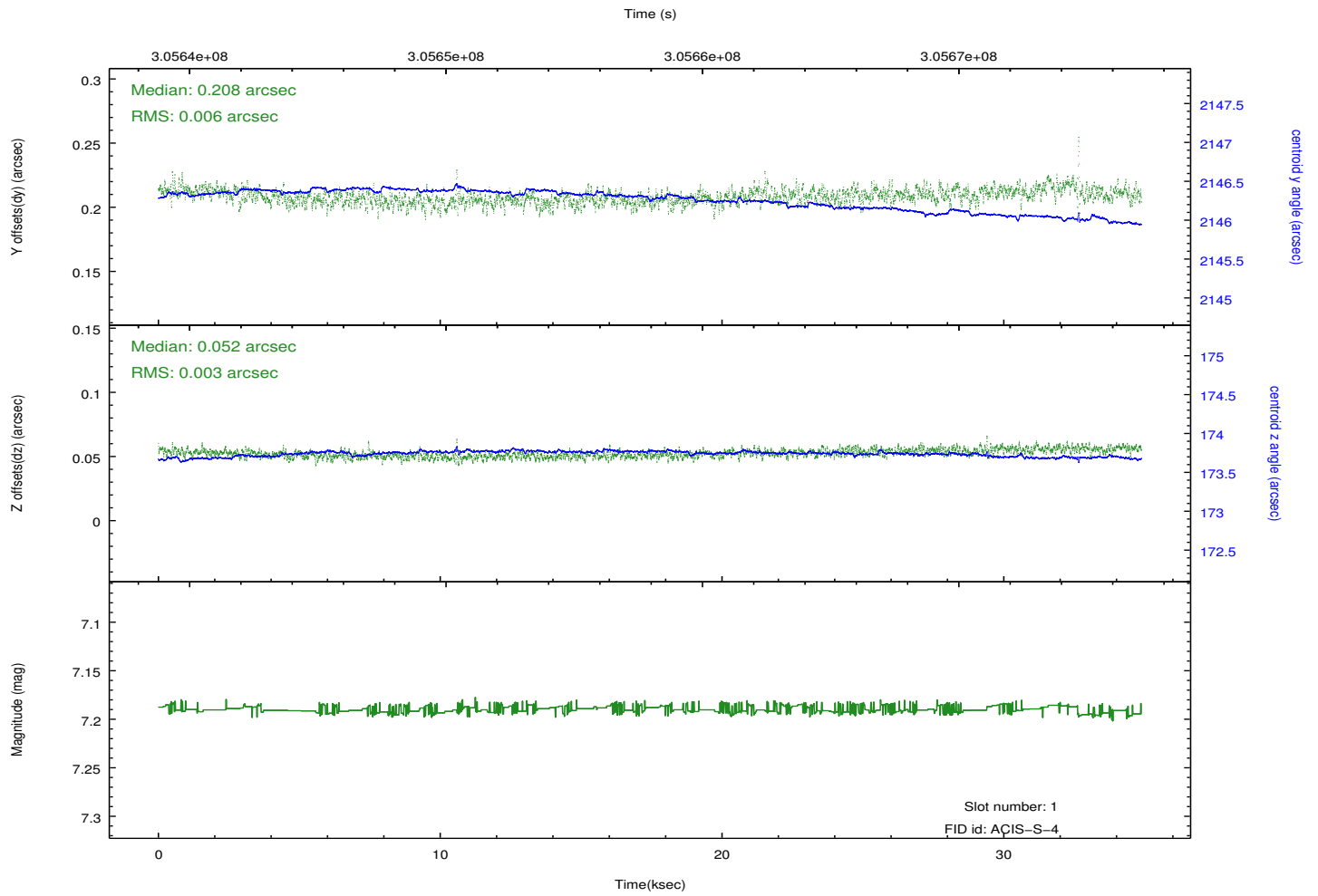
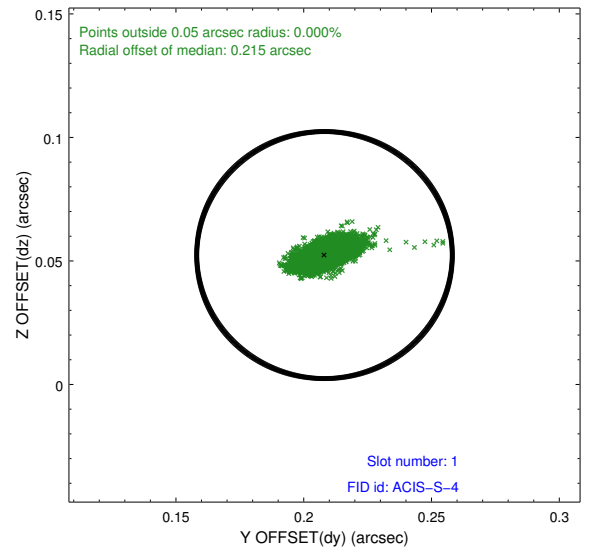
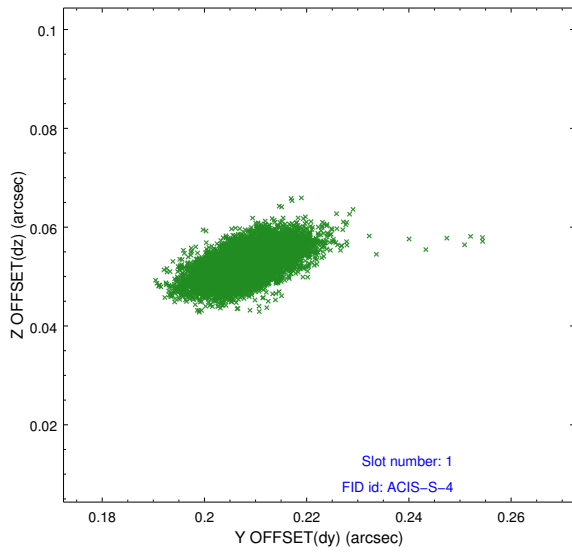


2.5 FID Slots

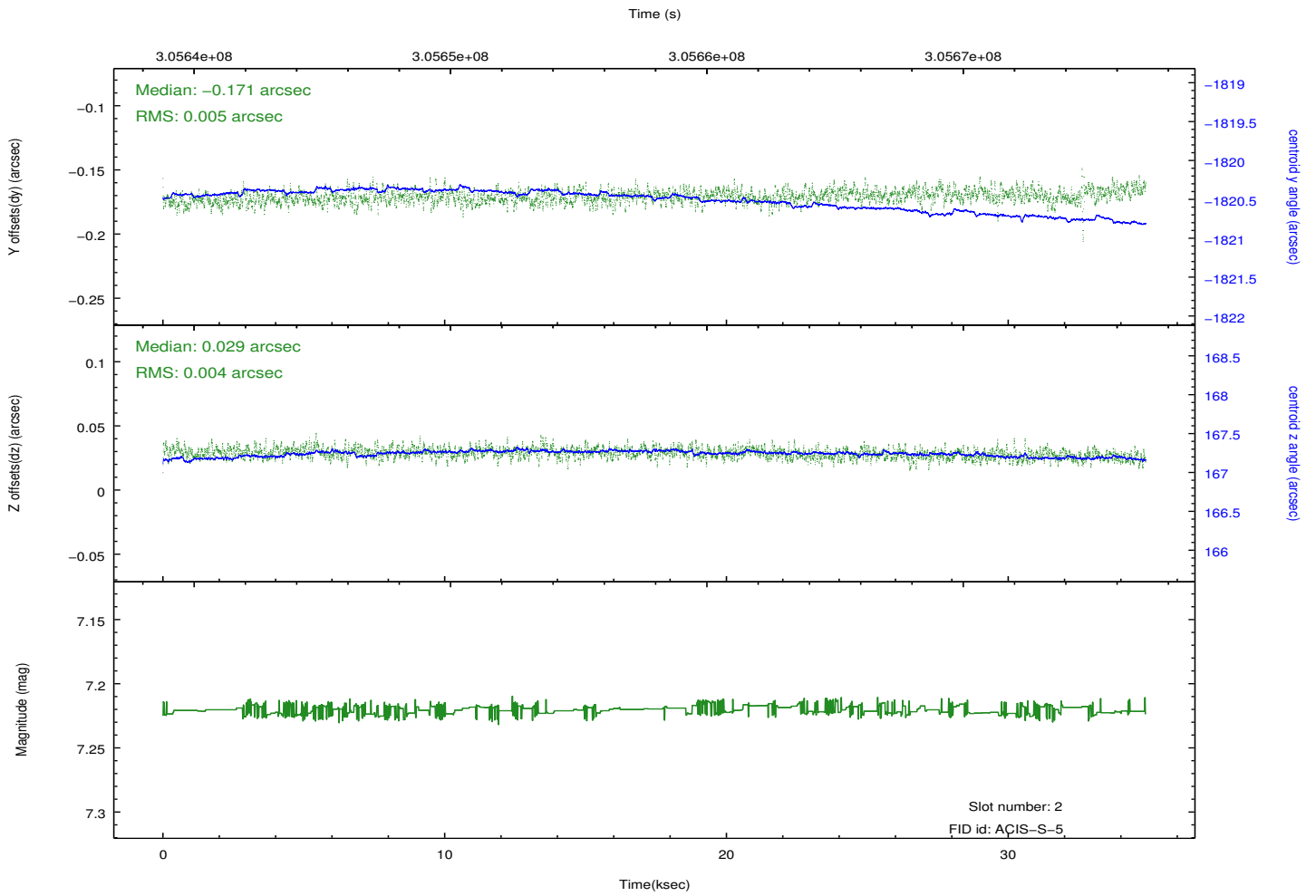
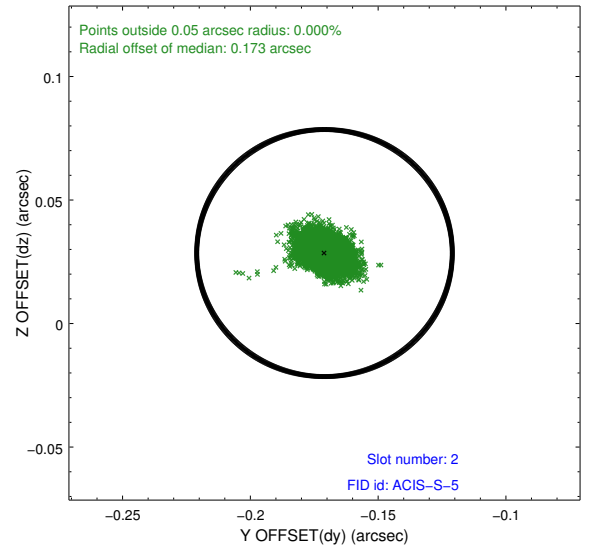
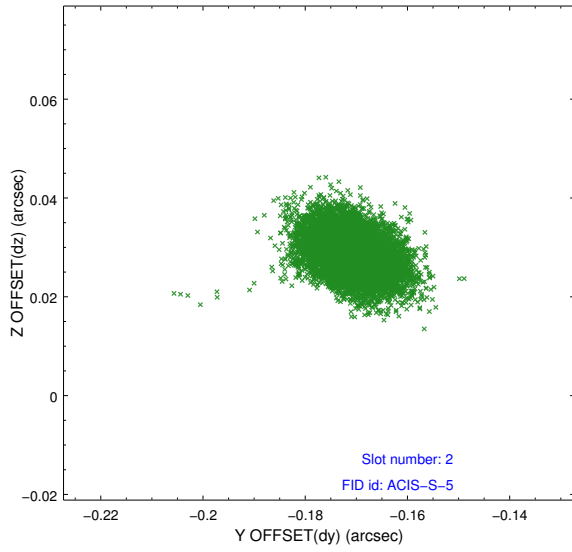
2.5.1 Slot 0



2.5.2 Slot 1



2.5.3 Slot 2



A Summary

A.1 Status

V&V Scientist	Jen Lauer
V&V Date (YYYY-MM-DD)	2012.05.02
V&V Edition	1
V&V Disposition and Status	OK
V&V Charge Time	34.5061002

A.2 Comments