

V&V Reference Report

L2 ASCDS Version : 8.4.4

Observation 7995 - L2 Version 2
Chandra X-Ray Center

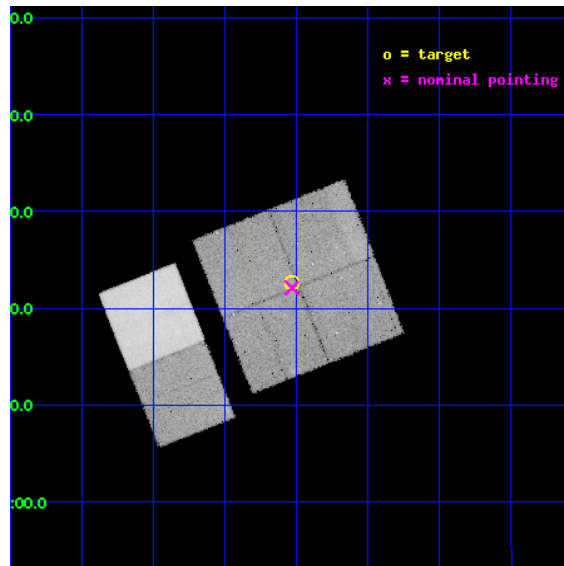
L2 Processing Date : Apr 25 2012

Contents

1	Front	2
2	OBI	3
2.1	OBI	3
2.1.1	Images	3
2.1.2	Bias	3
2.1.3	Parameters	4
2.1.4	Events	4
2.2	Compared Parameters	5
2.3	Aspect	6
2.4	Star Slots	9
2.4.1	Slot 3	9
2.4.2	Slot 4	10
2.4.3	Slot 5	11
2.4.4	Slot 6	12
2.4.5	Slot 7	13
2.5	FID Slots	14
2.5.1	Slot 0	14
2.5.2	Slot 1	15
2.5.3	Slot 2	16
A	Summary	17
A.1	Status	17
A.2	Comments	17

1 Front

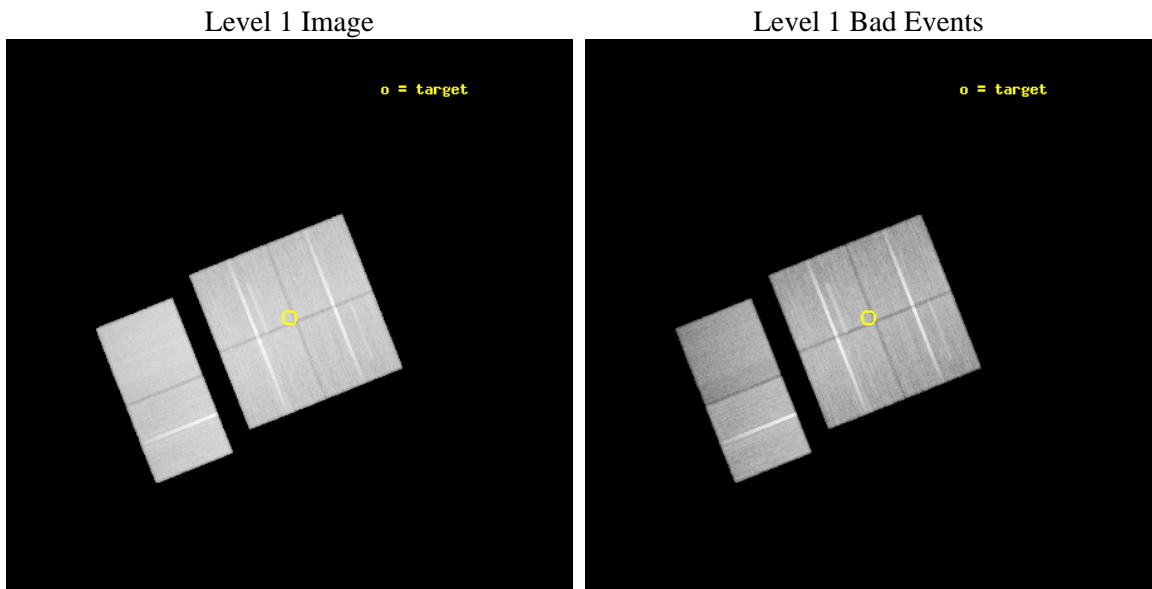
seq_num	900539	Sequence number
obs_id	7995	Observation id
title	THE CHANDRA-COSMOS SURVEY	Proposal title
observer	Dr. Martin Elvis	Principal investigator
object	C-COSMOS1-1	Source name
dtcycle	0	
cycle	P	events from which exps? Prim/Second/Both
ra_targ	150.508546	Observer's specified target RA [deg]
dec_targ	2.376794	Observer's specified target Dec [deg]
ra_nom	150.50792886121	Nominal RA [deg]
dec_nom	2.3687273643522	Nominal Dec [deg]
roll_nom	248.35390784124	Nominal Roll [deg]
revision	2	Processing version of data
ontime	46662.399826229	Sum of GTIs [s]
livetime	46071.532422905	Livetime [s]
ontime0	46652.676985085	Sum of GTIs [s]
ontime1	46652.677034676	Sum of GTIs [s]
ontime2	46655.917865694	Sum of GTIs [s]
ontime3	46662.399826229	Sum of GTIs [s]
ontime6	46655.917885721	Sum of GTIs [s]
ontime7	46662.399826229	Sum of GTIs [s]
l2events	339174	Number of level 2 events



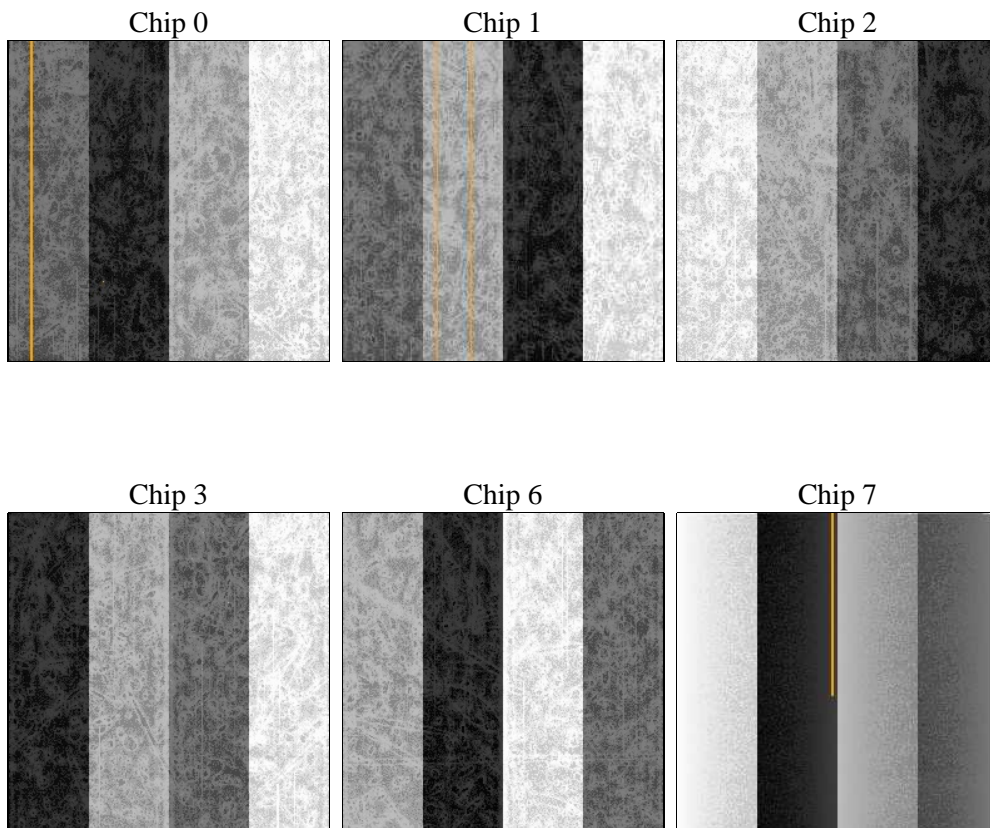
2 OBI

2.1 OBI

2.1.1 Images



2.1.2 Bias



2.1.3 Parameters

obi_num	0	Obi number	sched_exp_time	46500.000000	[s] Scheduled observation exposure time
ascdsver	8.4.4	Processing system revision	ontime	46662.399826229	Sum of GTIs [s]
caldbver	4.4.9	 	ontime0	46652.676985085	Sum of GTIs [s]
date	2012-04-25T21:54:34	Date and time of file creation	ontime1	46652.677034676	Sum of GTIs [s]
revision	2	Processing version of data	ontime2	46655.917865694	Sum of GTIs [s]
			ontime3	46662.399826229	Sum of GTIs [s]
			ontime6	46655.917885721	Sum of GTIs [s]
			ontime7	46662.399826229	Sum of GTIs [s]
			l1events	2288218	Number of level 1 events

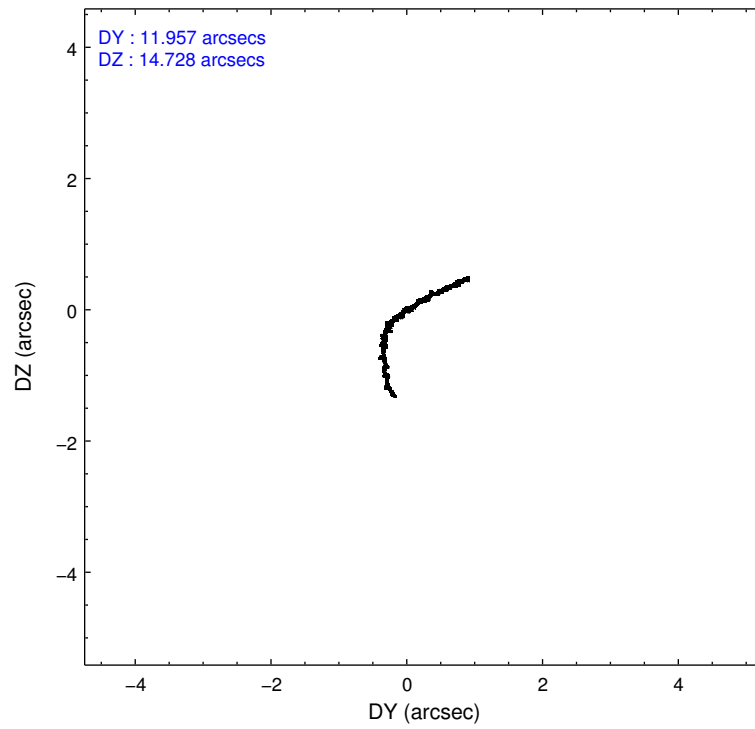
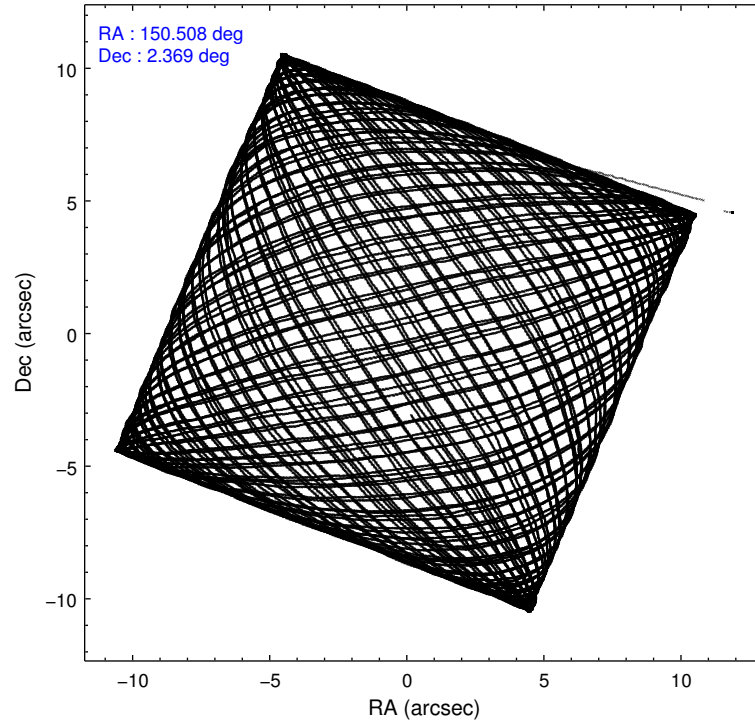
2.1.4 Events

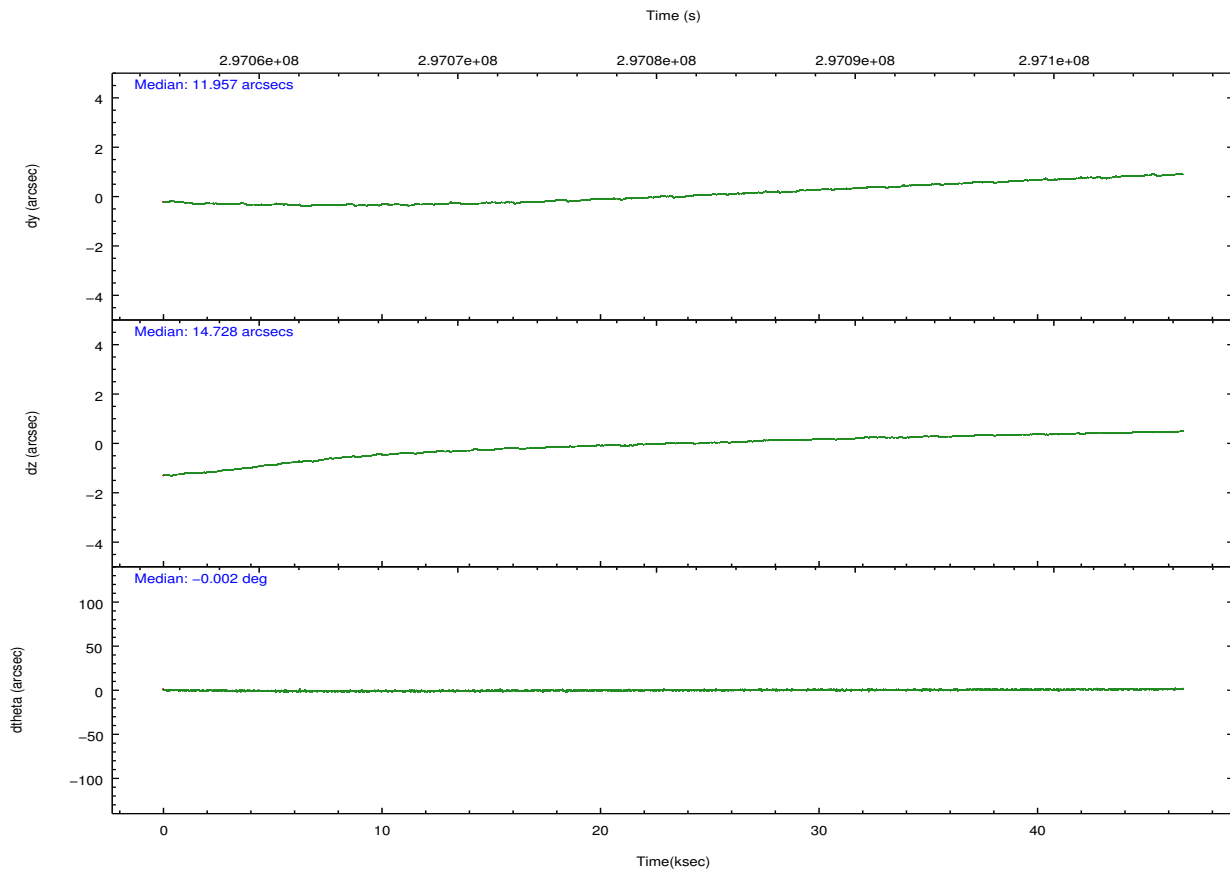
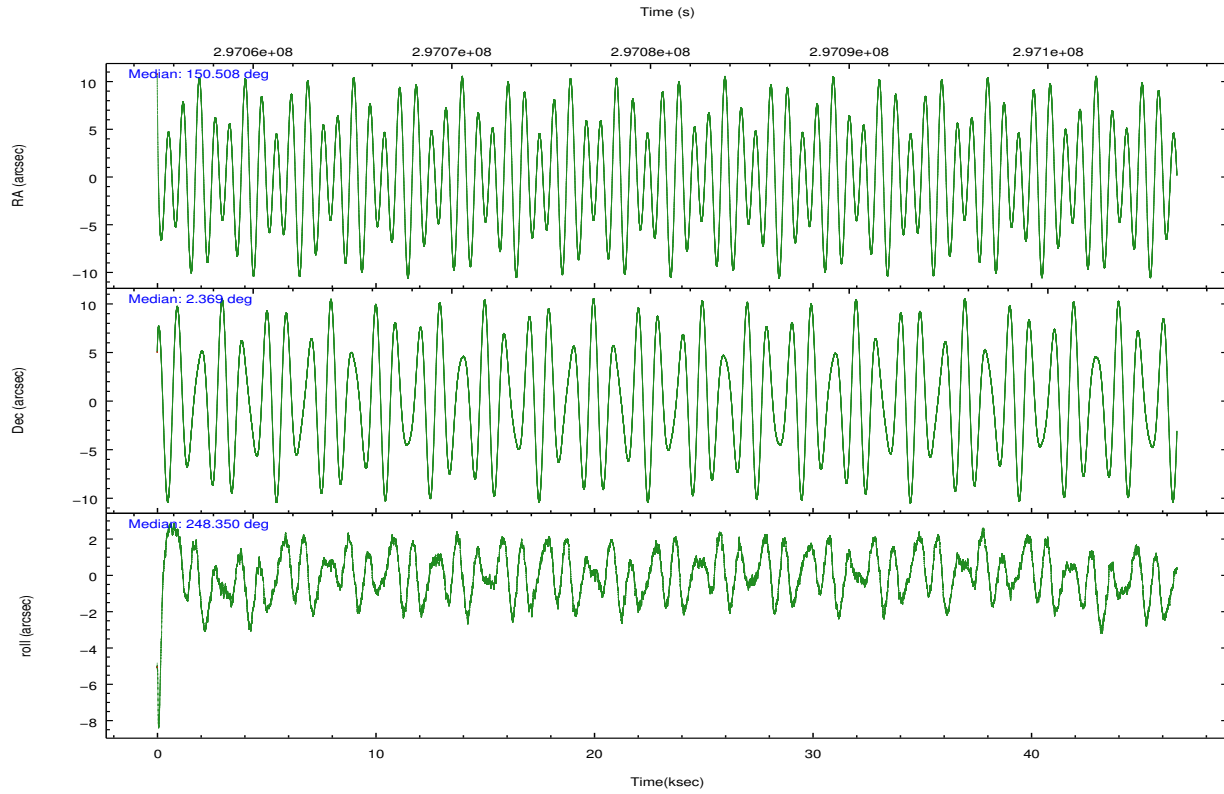
	ccd 0	ccd 1	ccd 2	ccd 3	ccd 6	ccd 7		ccd 0	ccd 1	ccd 2	ccd 3	ccd 6	ccd 7
level 1 events	351274	353579	400324	375812	394264	412965	grade 0 events	12742	15791	13309	12235	13207	17457
rejected events	314798	311403	363885	340919	355618	225070		3%	4%	3%	3%	3%	4%
rejected %	89%	88%	90%	90%	90%	54%	grade 1 events	196	175	194	187	183	505
								0%	0%	0%	0%	0%	0%
							grade 2 events	8712	9334	8675	7654	8627	37914
								2%	2%	2%	2%	2%	9%
							grade 3 events	4185	4380	3908	4082	4230	17371
								1%	1%	0%	1%	1%	4%
							grade 4 events	3871	4468	3821	3985	4073	17284
								1%	1%	0%	1%	1%	4%
							grade 5 events	12496	14024	11977	14854	15320	44039
								3%	3%	2%	3%	3%	10%
							grade 6 events	7062	8296	6799	7012	8599	98325
								2%	2%	1%	1%	2%	23%
							grade 7 events	302010	297111	351641	325803	340025	180070
								85%	84%	87%	86%	86%	43%

2.2 Compared Parameters

Parameter	Planned	Actual	Parameter	Planned	Actual
Instrument	ACIS	ACIS	Obspar format version number	7	7
Detector	ACIS-012367	ACIS-012367	Obspar file type	PREDICTED	ACTUAL
Grating	NONE	NONE	Obspar update status	NONE	UPDATED
Data mode	VFAINT	VFAINT	CCD I0 on	Y	Y
Observation mode	POINTING	POINTING	CCD I1 on	Y	Y
[deg] Pointing RA	150.503826	150.5079288612135	CCD I2 on	Y	Y
[deg] Pointing Dec	2.395921	2.368727364352157	CCD I3 on	Y	Y
[deg] Pointing Roll	248.145392	248.3539078412418	CCD S0 on	N	N
[mm] SIM focus pos	-0.782348	-0.7809083437167272	CCD S1 on	N	N
[mm] SIM defocus	0	0.001439871863259334	CCD S2 on	O1	Y
[mm] SIM translation stage pos	-233.592463	-233.5874344608287	CCD S3 on	O2	Y
[mm] SIM translation stage offset	0	-0.005018542100998502	CCD S4 on	N	N
[s] Observation start time (MET)	297057657.184000	297056535.13897	CCD S5 on	N	N
Observation start date	2007-06-01T03:59:52	2007-06-01T03:42:15	Number of optional ACIS chips dropped	0	0
[s] Observation end time (MET)	297104157.184000	297104701.94127	On-chip summing requested	N	N
Observation end date	2007-06-01T16:54:52	2007-06-01T17:05:01	Subarray requested	NONE	NONE
Read mode	TIMED	TIMED	Alternating exposures requested	N	N
			[s] Primary exposure time	0.000000	3.2

2.3 Aspect



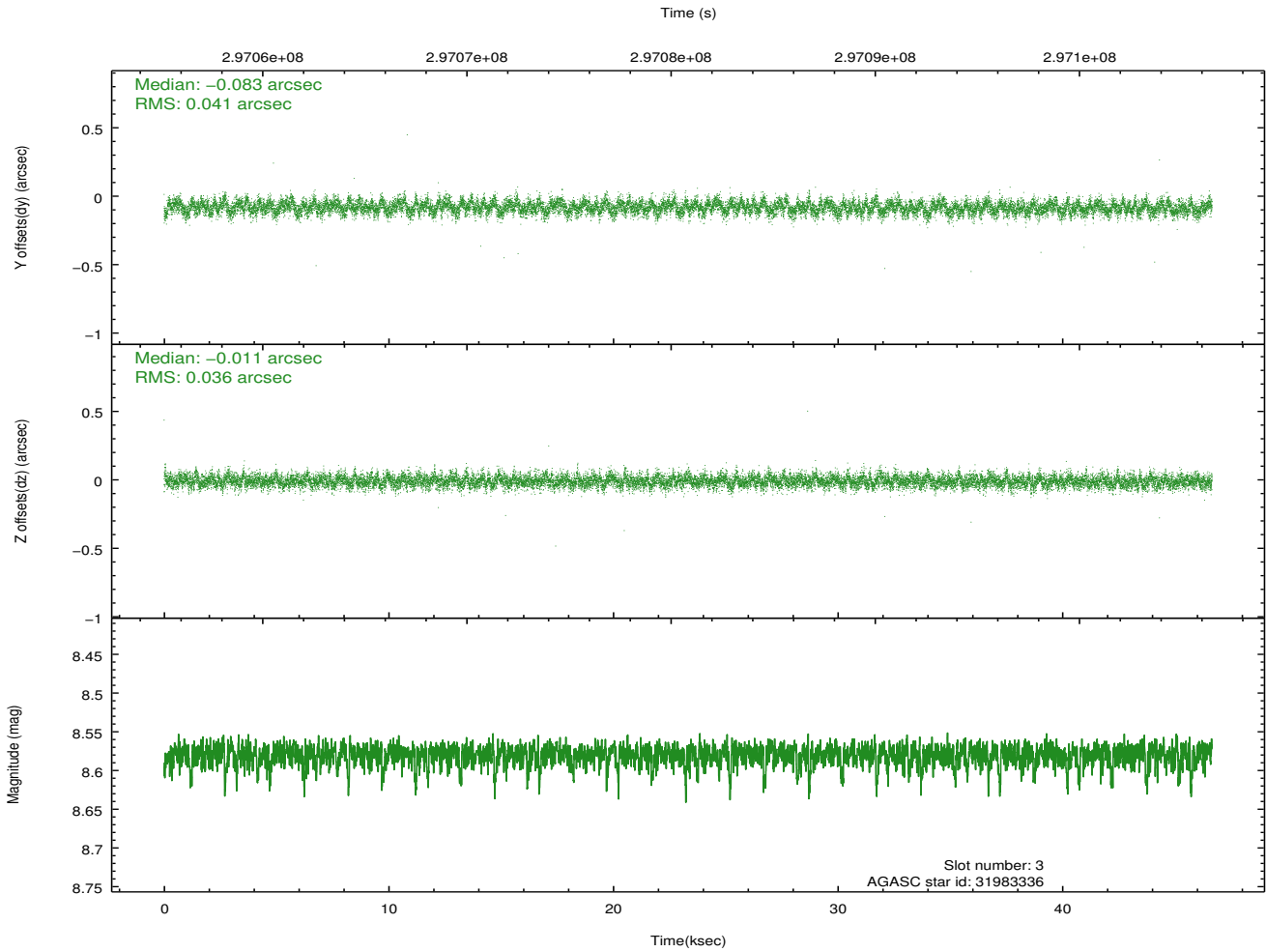
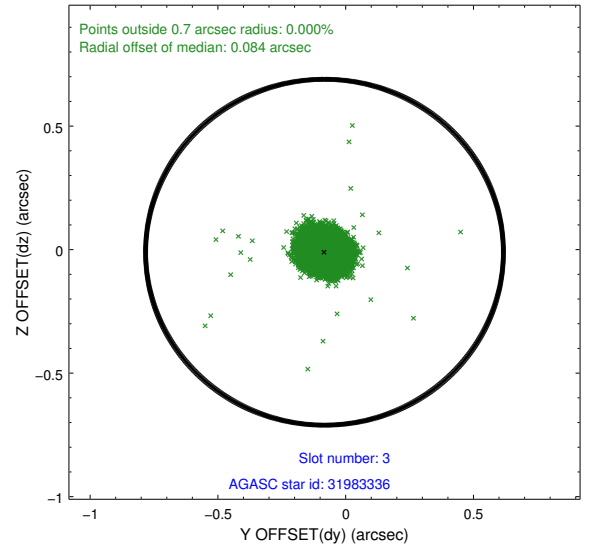
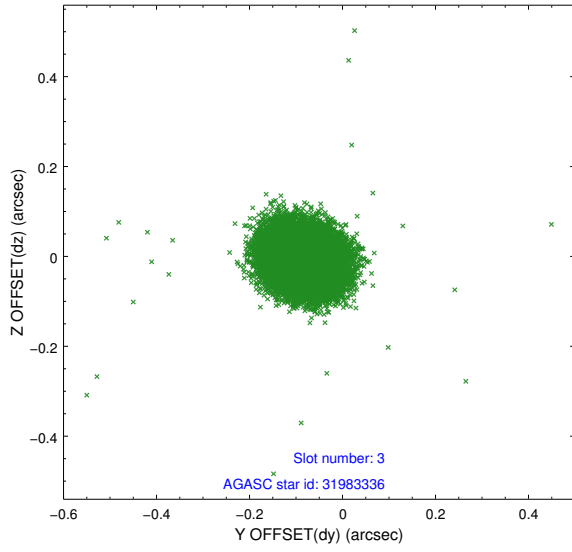


Slot Statistics

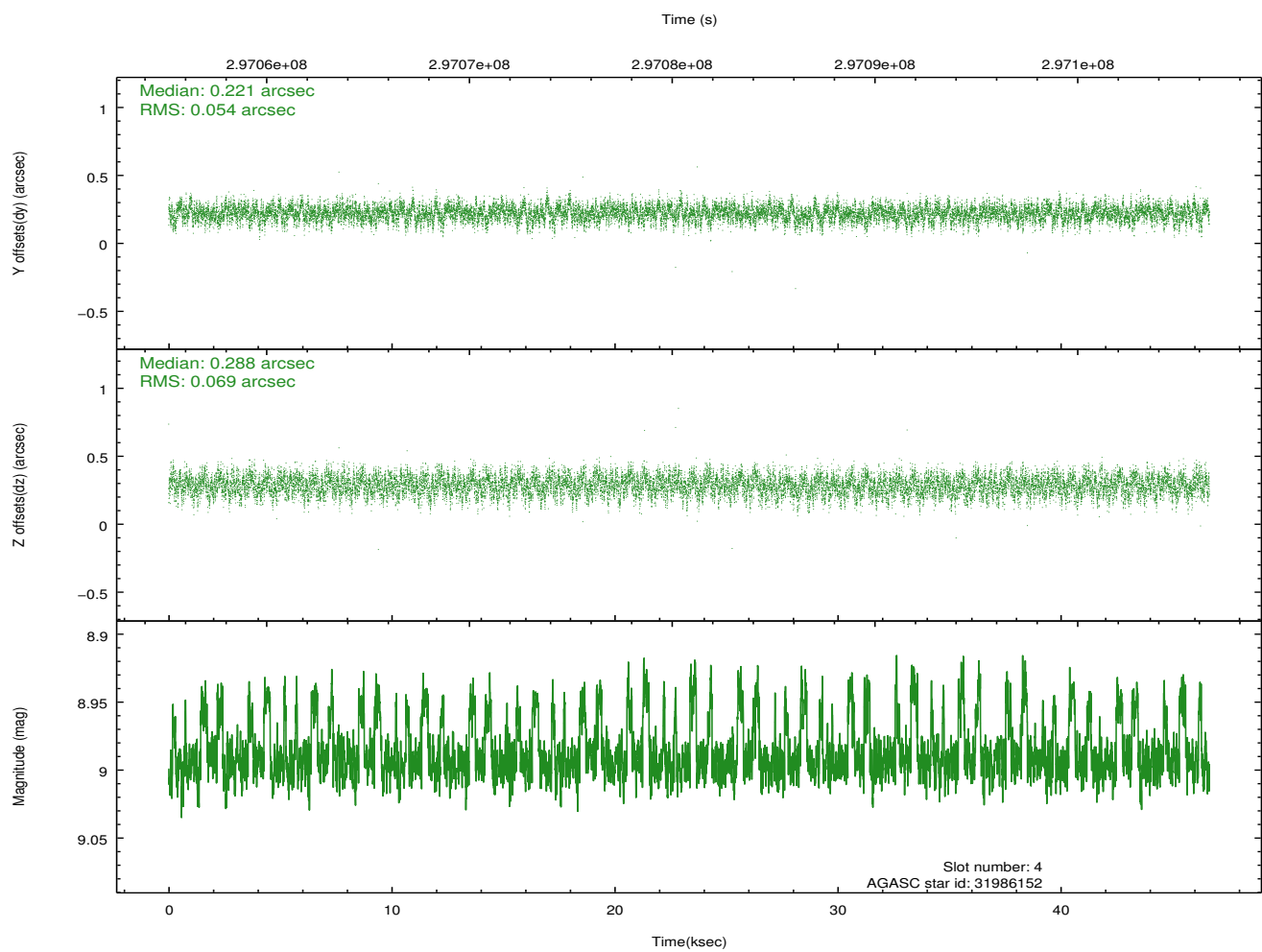
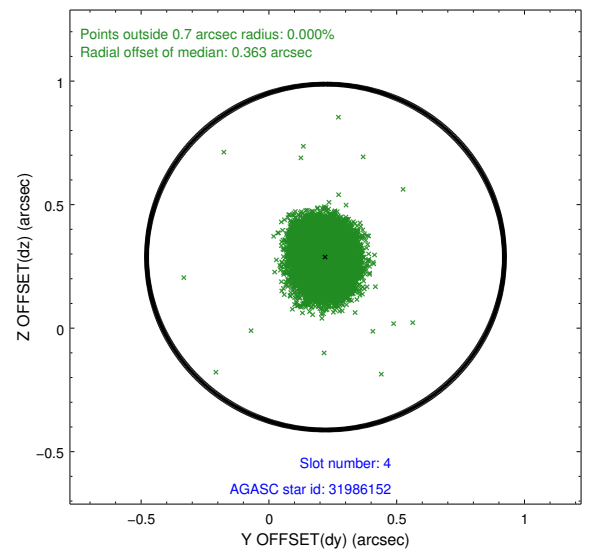
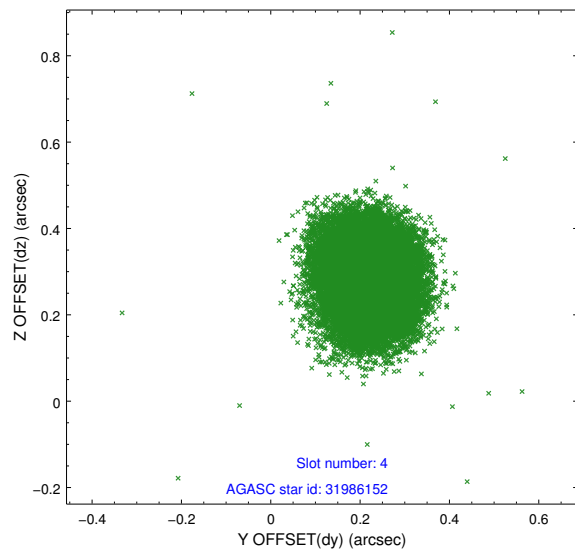
slot	status	id	mag	n_pts	med_dy	med_dz	dr1	dr2	ra	dec	mean_y	mean_z
0	FID	ACIS-I-1	7.23	11379	0.030	-0.013	0.015	0.027	0.000000	0.000000	927.51	-838.21
1	FID	ACIS-I-5	7.23	11382	-0.200	0.036	0.009	0.017	0.000000	0.000000	-1820.84	1059.32
2	FID	ACIS-I-6	7.24	11381	0.078	0.050	0.014	0.027	0.000000	0.000000	393.10	1703.83
3	GUIDE	31983336	8.58	22756	-0.083	-0.011	0.057	0.092	150.429924	2.291234	448.81	-106.32
4	GUIDE	31986152	8.99	22744	0.221	0.288	0.093	0.149	150.840314	2.057585	680.17	1577.08
5	GUIDE	32374896	9.21	22748	0.118	-0.153	0.084	0.134	150.682269	2.512794	-629.05	439.08
6	GUIDE	32387968	9.20	22739	-0.193	-0.222	0.107	0.170	150.106347	3.119099	-1884.72	-2295.67
7	GUIDE	31985760	8.45	22757	-0.058	0.102	0.067	0.107	150.924581	2.094394	443.91	1808.97

2.4 Star Slots

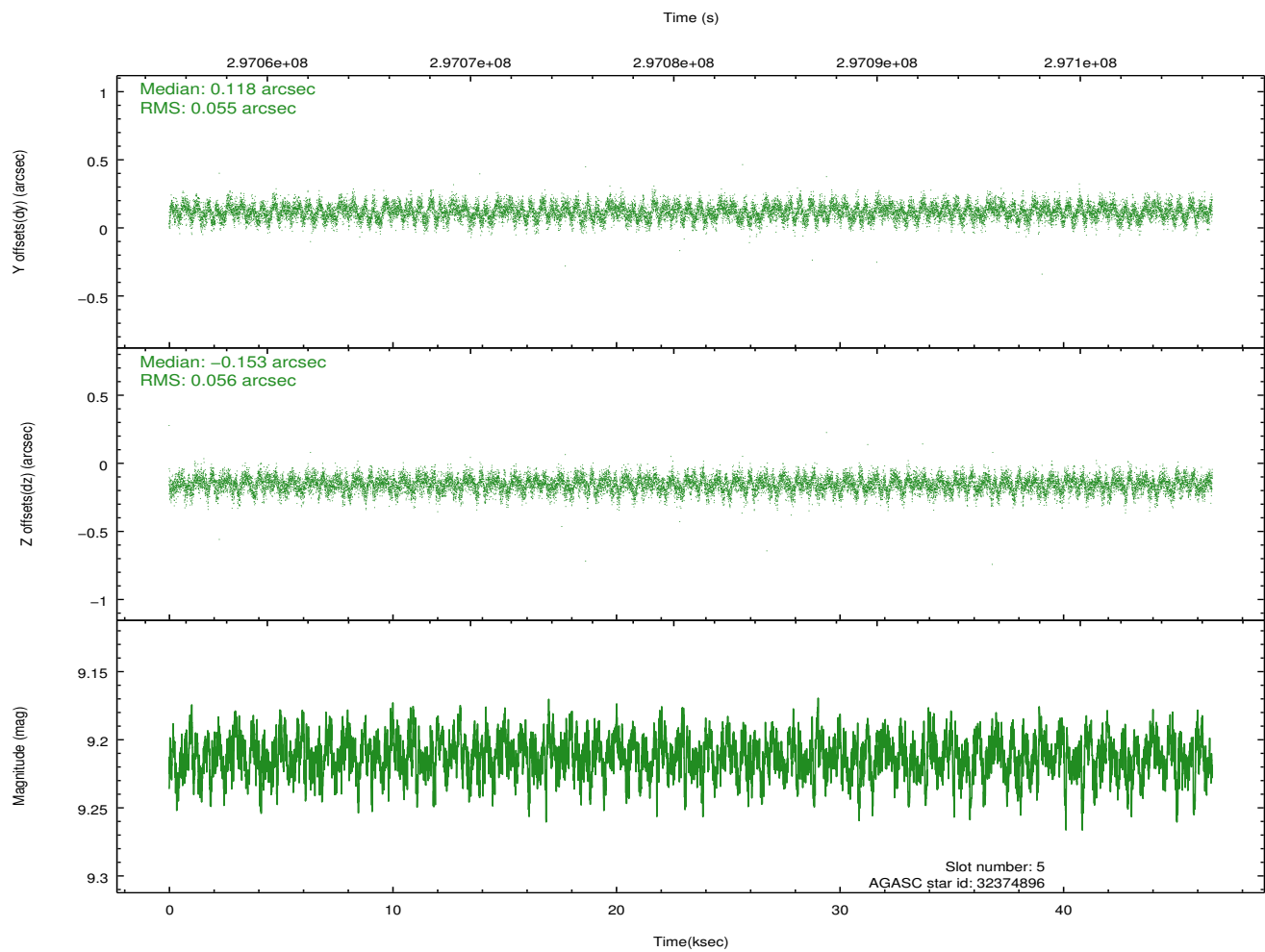
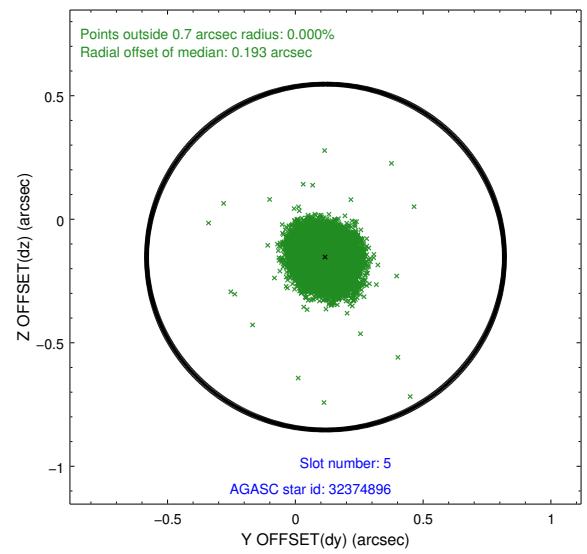
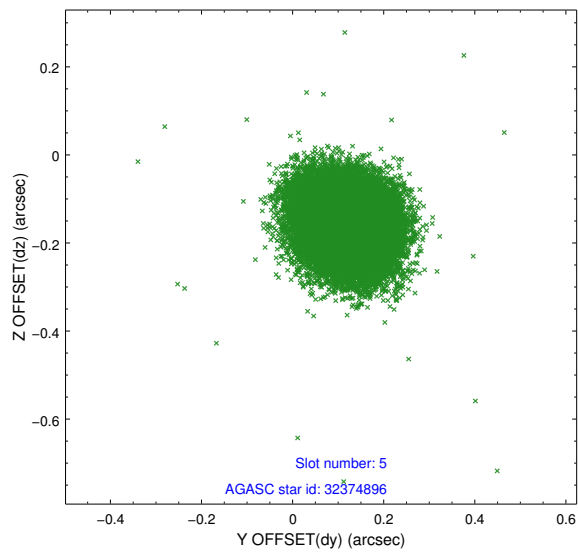
2.4.1 Slot 3



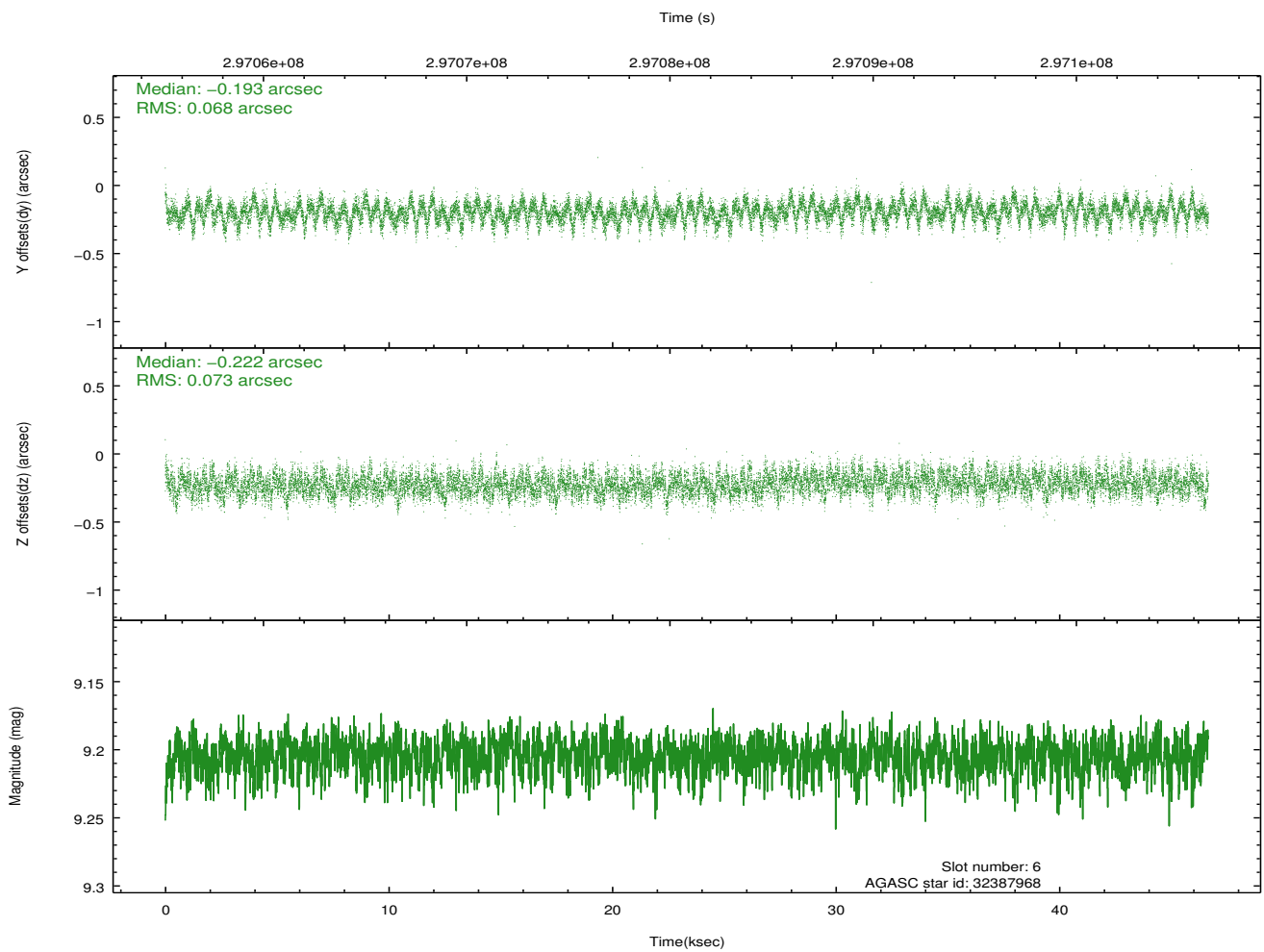
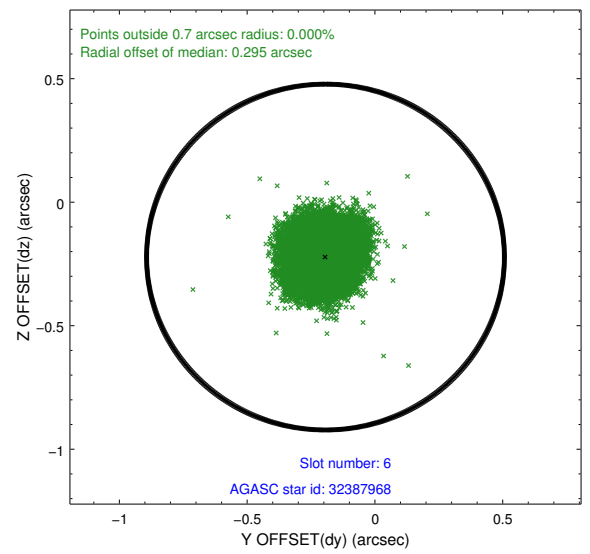
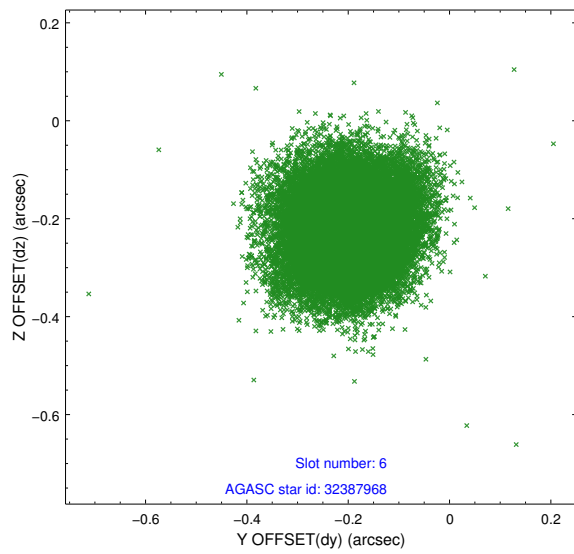
2.4.2 Slot 4



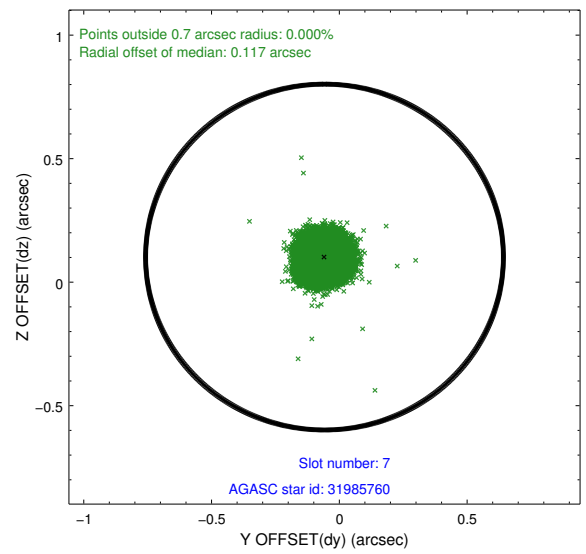
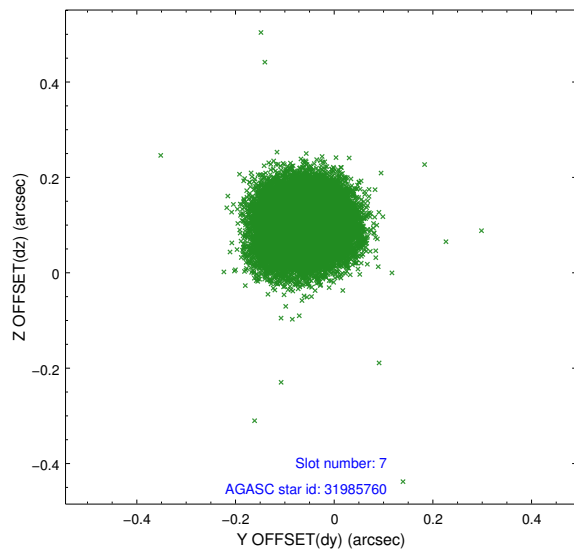
2.4.3 Slot 5



2.4.4 Slot 6

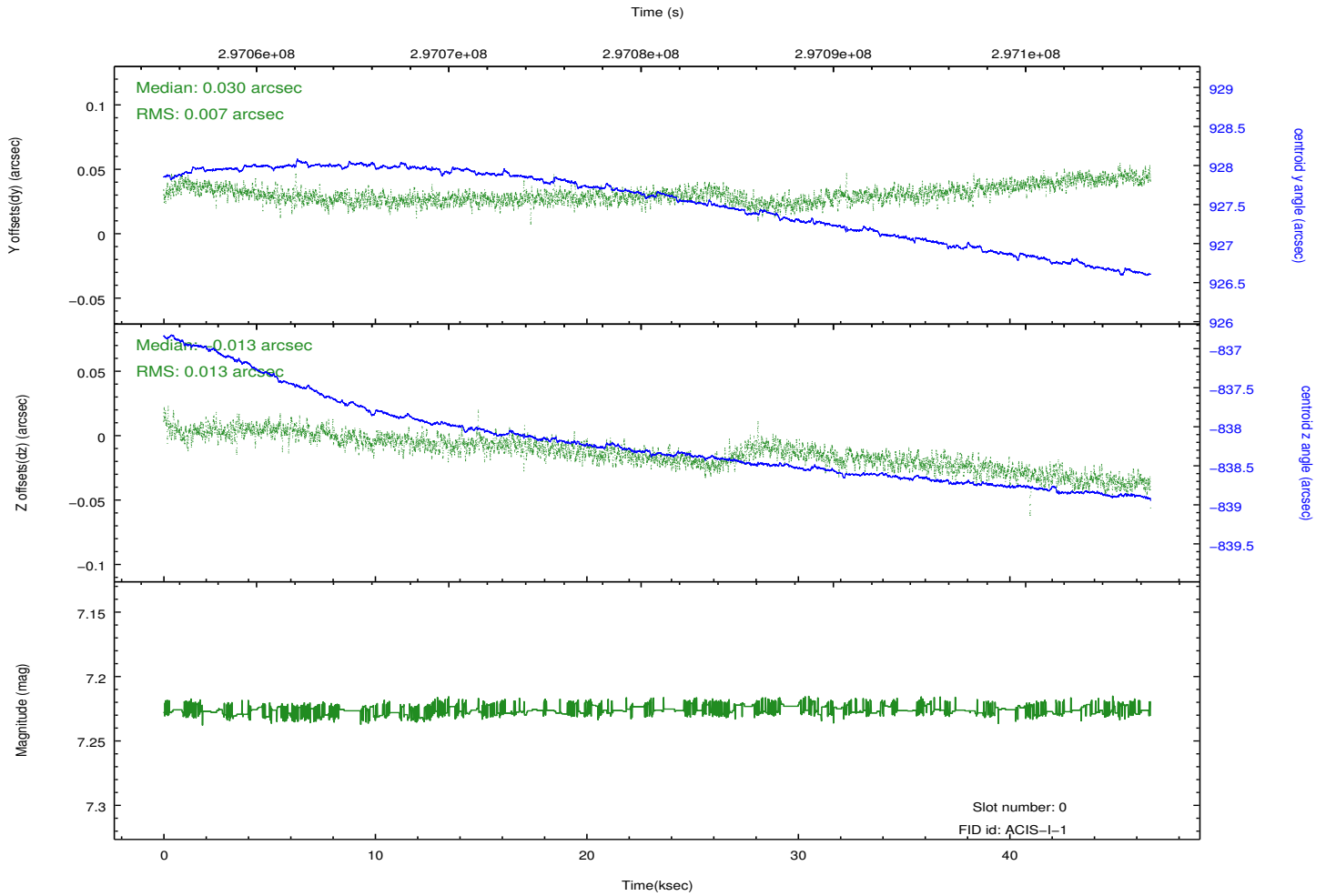
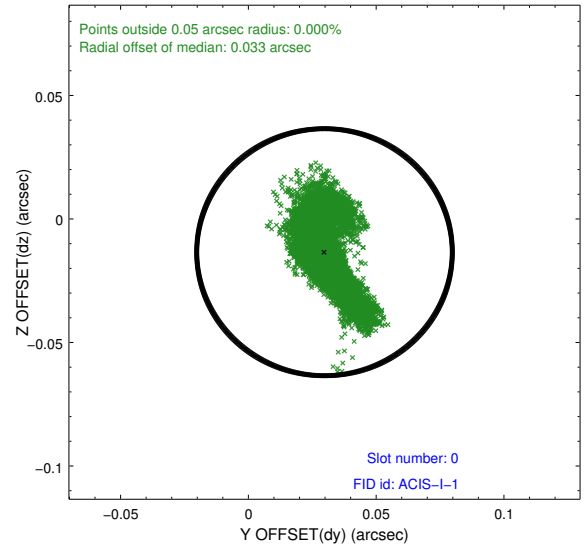
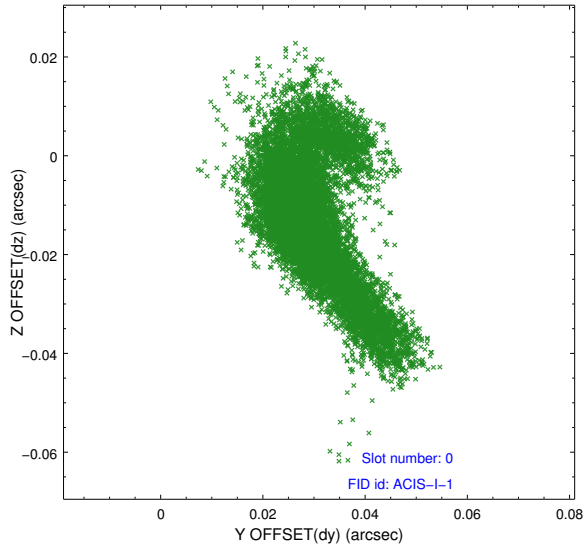


2.4.5 Slot 7

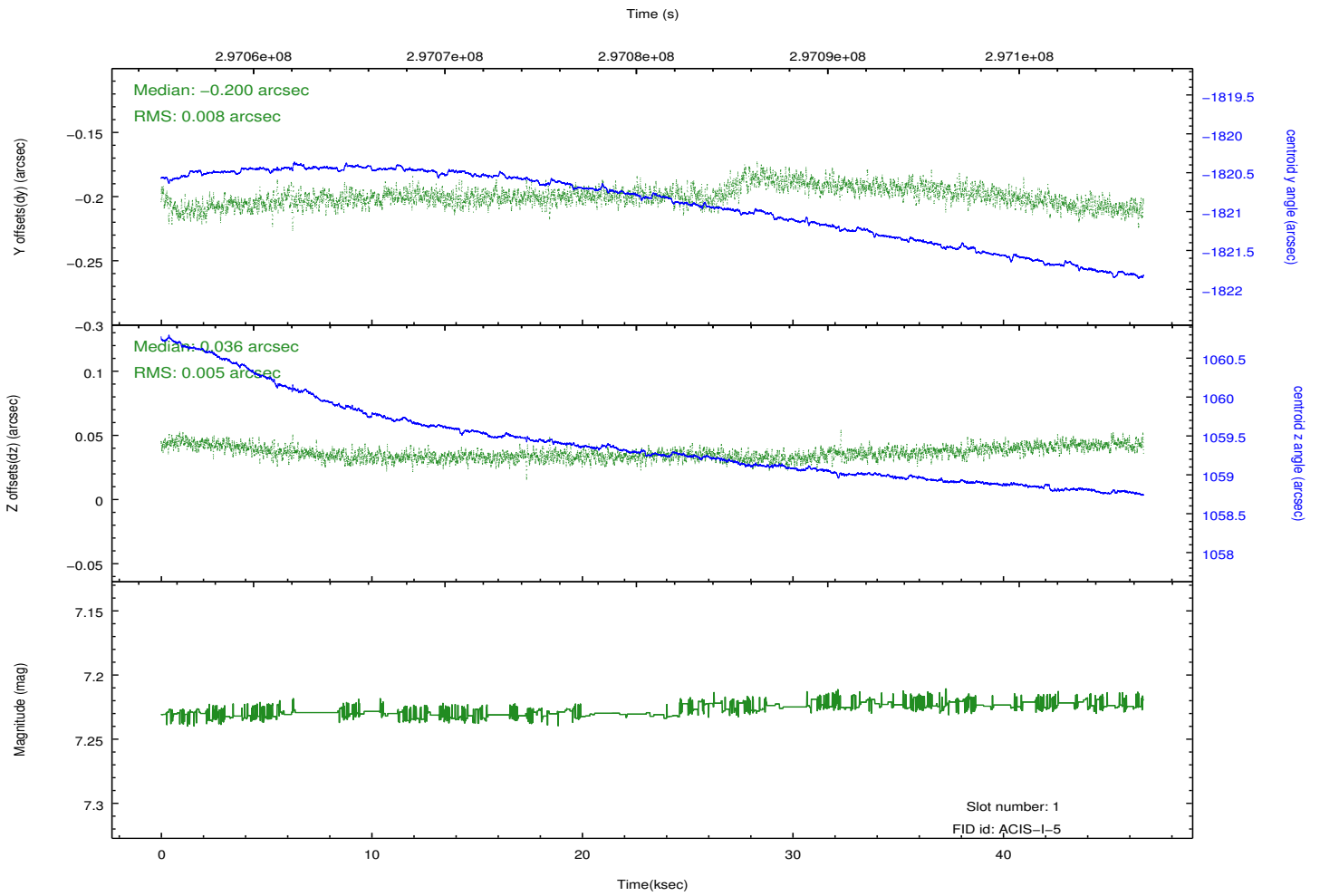
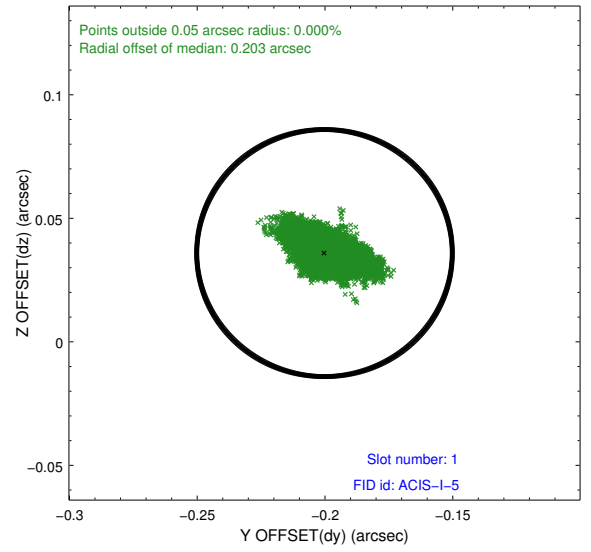
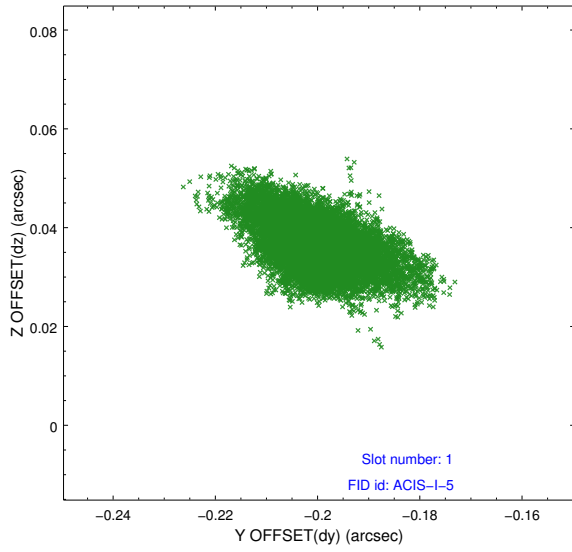


2.5 FID Slots

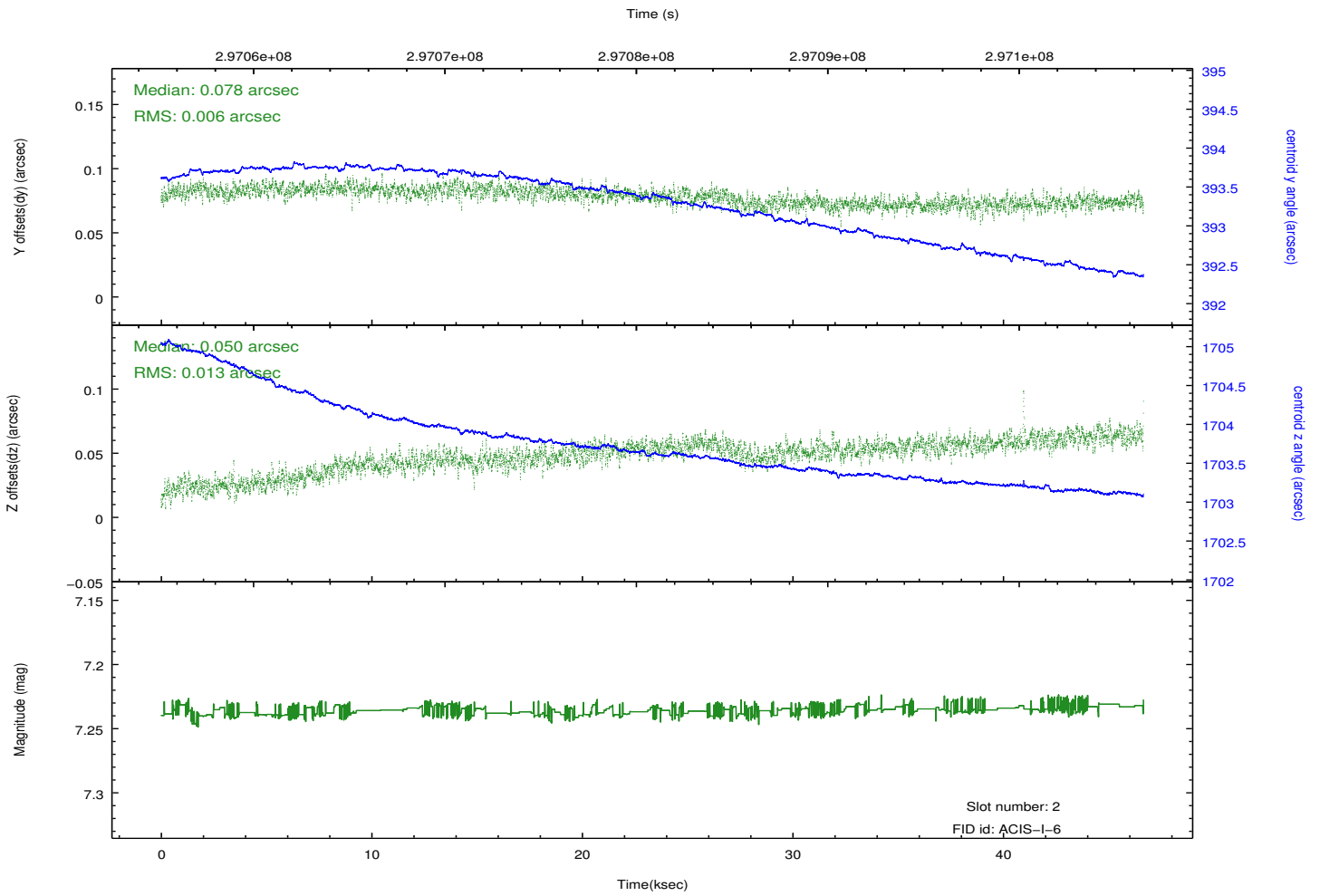
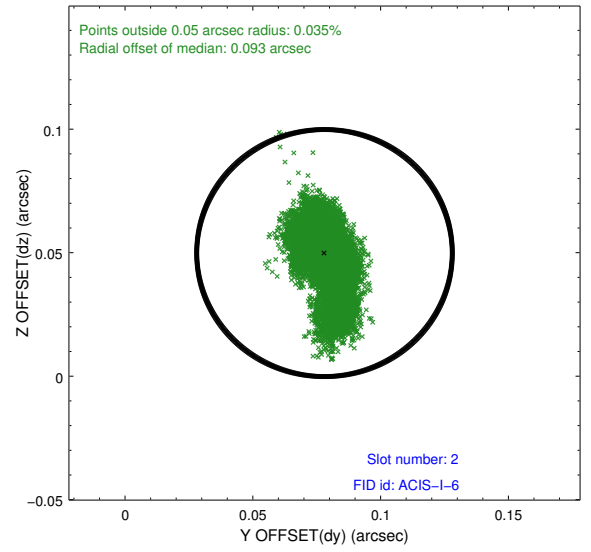
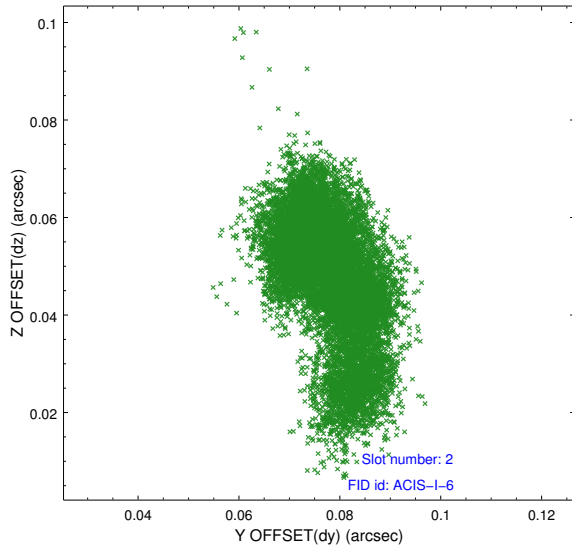
2.5.1 Slot 0



2.5.2 Slot 1



2.5.3 Slot 2



A Summary

A.1 Status

V&V Scientist	Jen Lauer
V&V Date (YYYY-MM-DD)	2012.04.26
V&V Edition	1
V&V Disposition and Status	OK
V&V Charge Time	46.6623998

A.2 Comments

Roll preference met.