

# V&V Reference Report

## L2 ASCDS Version : 8.4.4

Observation 8005 - L2 Version 3  
Chandra X-Ray Center

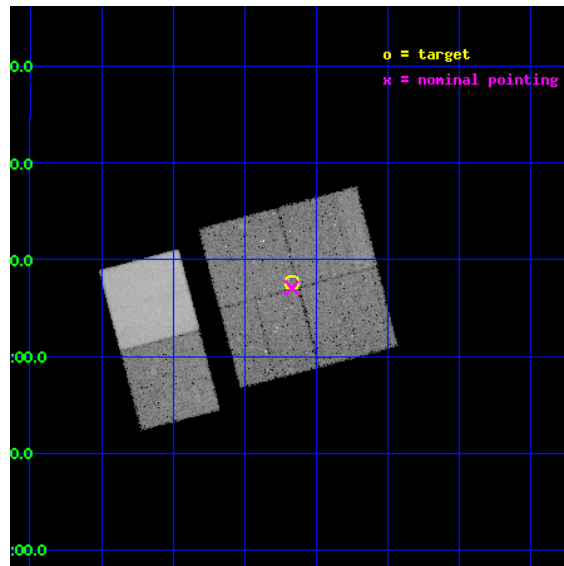
L2 Processing Date : Apr 23 2012

## Contents

<b>1</b>	<b>Front</b>	<b>2</b>
<b>2</b>	<b>OBI</b>	<b>3</b>
2.1	OBI . . . . .	3
2.1.1	Images . . . . .	3
2.1.2	Bias . . . . .	3
2.1.3	Parameters . . . . .	4
2.1.4	Events . . . . .	4
2.2	Compared Parameters . . . . .	5
2.3	Aspect . . . . .	6
2.4	Star Slots . . . . .	9
2.4.1	Slot 3 . . . . .	9
2.4.2	Slot 4 . . . . .	10
2.4.3	Slot 5 . . . . .	11
2.4.4	Slot 6 . . . . .	12
2.4.5	Slot 7 . . . . .	13
2.5	FID Slots . . . . .	14
2.5.1	Slot 0 . . . . .	14
2.5.2	Slot 1 . . . . .	15
2.5.3	Slot 2 . . . . .	16
<b>A</b>	<b>Summary</b>	<b>17</b>
A.1	Status . . . . .	17
A.2	Comments . . . . .	17

# 1 Front

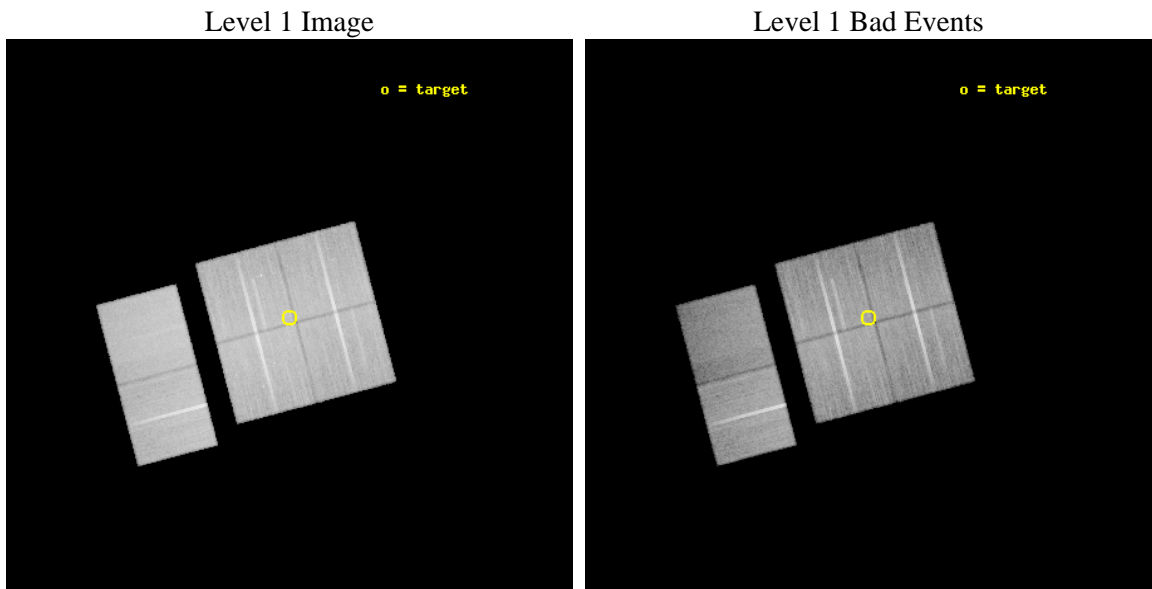
seq_num	900549	Sequence number
obs_id	8005	Observation id
title	THE CHANDRA-COSMOS SURVEY	Proposal title
observer	Dr. Martin Elvis	Principal investigator
object	C-COSMOS3-1	Source name
dtcycle	0	&#160
cycle	P	events from which exps? Prim/Second/Both
ra_targ	150.417292	Observer's specified target RA [deg]
dec_targ	2.126269	Observer's specified target Dec [deg]
ra_nom	150.41765110636	Nominal RA [deg]
dec_nom	2.1182100442212	Nominal Dec [deg]
roll_nom	255.20869538266	Nominal Roll [deg]
revision	3	Processing version of data
ontime	32038.108967364	Sum of GTIs [s]
livetime	31632.423140586	Livetime [s]
ontime0	32041.226857543	Sum of GTIs [s]
ontime1	32041.267897546	Sum of GTIs [s]
ontime2	32038.067937315	Sum of GTIs [s]
ontime3	32038.108967364	Sum of GTIs [s]
ontime6	32038.191077292	Sum of GTIs [s]
ontime7	32041.391017556	Sum of GTIs [s]
l2events	225363	Number of level 2 events



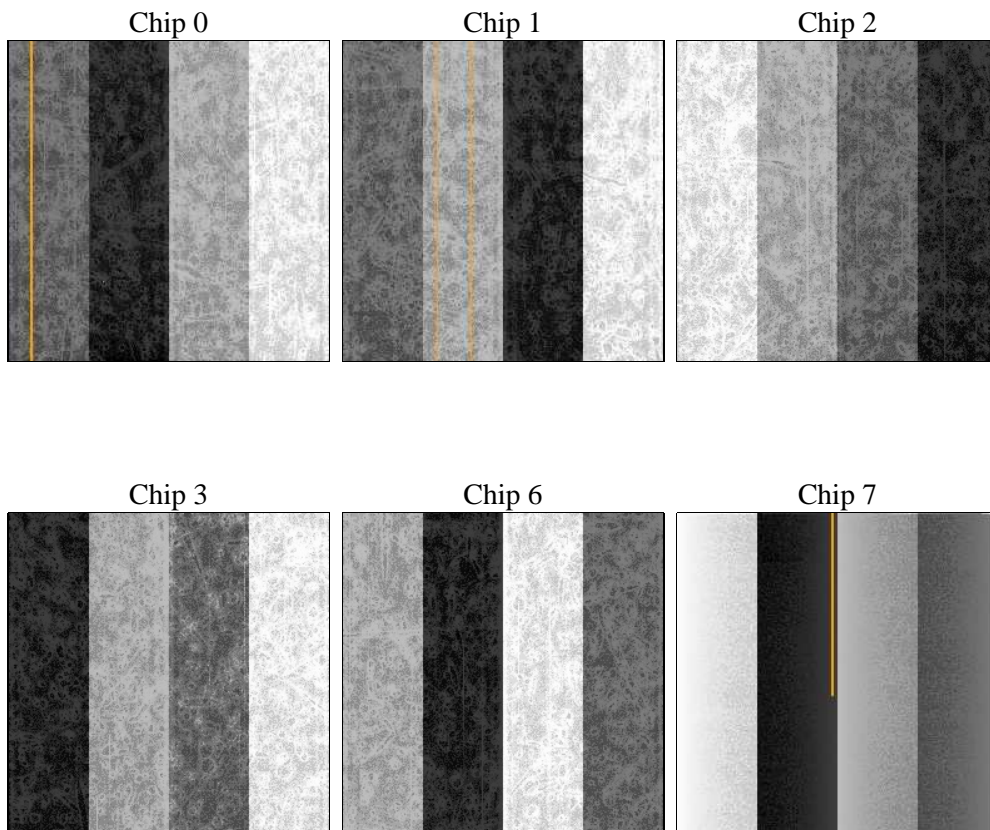
## 2 OBI

### 2.1 OBI

#### 2.1.1 Images



#### 2.1.2 Bias



### 2.1.3 Parameters

obi_num	0	Obi number	sched_exp_time	32000.000000	[s] Scheduled observation exposure time
ascdsver	8.4.4	Processing system revision	ontime	32038.108967364	Sum of GTIs [s]
caldbver	4.4.9	&#160	ontime0	32041.226857543	Sum of GTIs [s]
date	2012-04-23T21:29:00	Date and time of file creation	ontime1	32041.267897546	Sum of GTIs [s]
revision	3	Processing version of data	ontime2	32038.067937315	Sum of GTIs [s]
			ontime3	32038.108967364	Sum of GTIs [s]
			ontime6	32038.191077292	Sum of GTIs [s]
			ontime7	32041.391017556	Sum of GTIs [s]
			l1events	1535114	Number of level 1 events

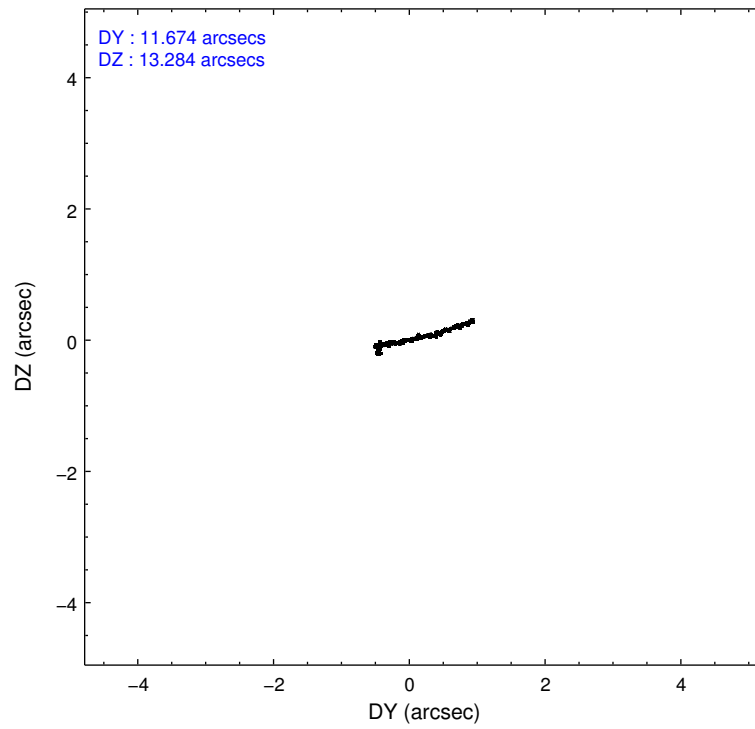
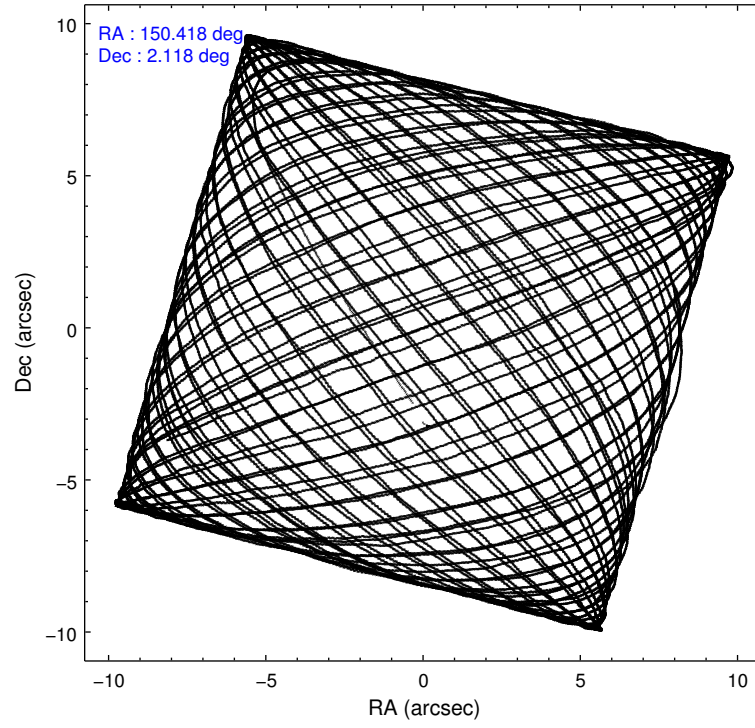
### 2.1.4 Events

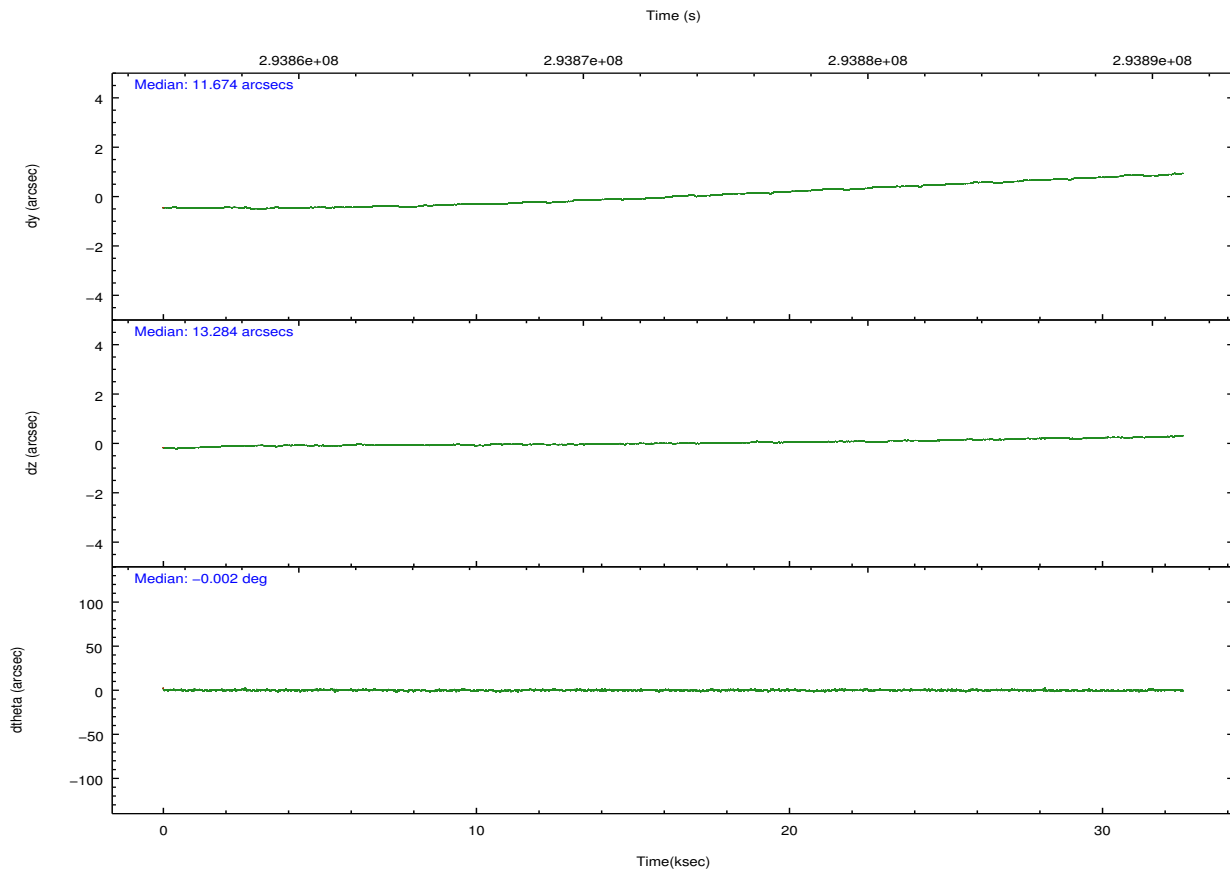
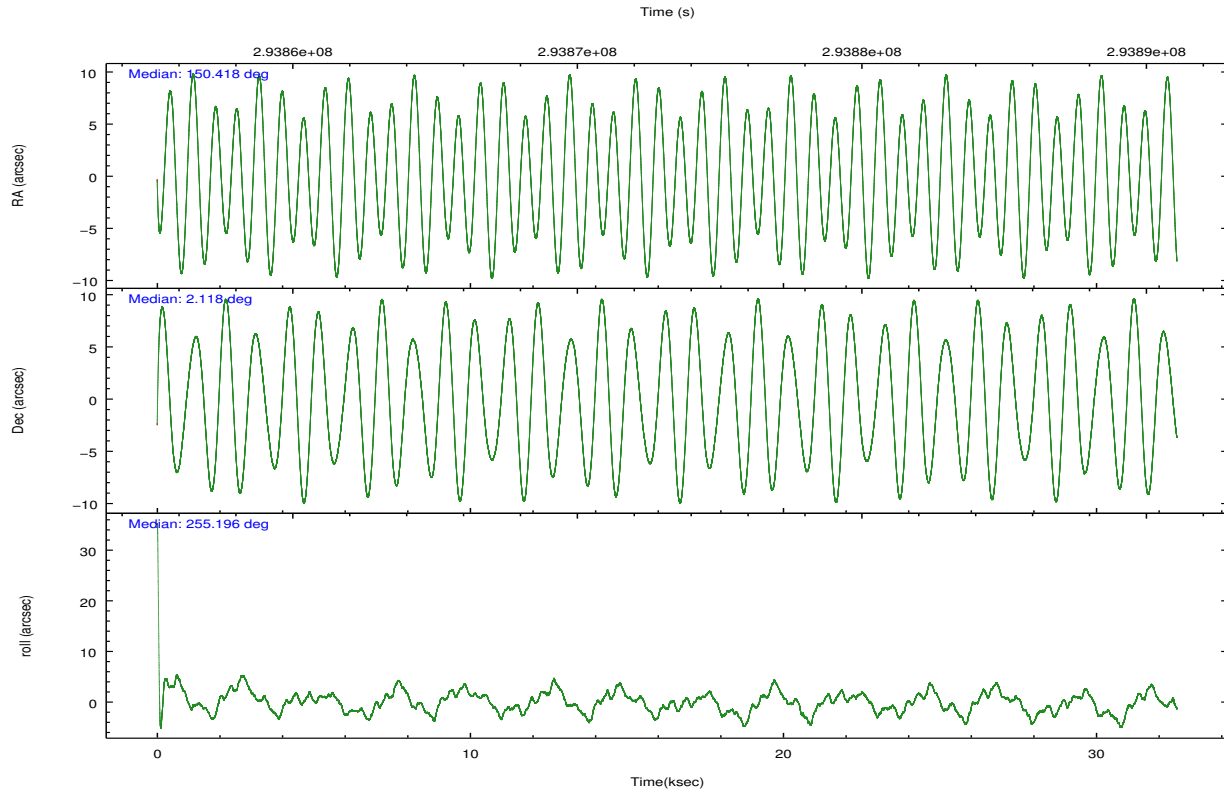
	ccd 0	ccd 1	ccd 2	ccd 3	ccd 6	ccd 7		ccd 0	ccd 1	ccd 2	ccd 3	ccd 6	ccd 7
level 1 events	236129	235133	271551	252800	264261	275240	grade 0 events	8473	9821	9135	9039	8717	11356
rejected events	211723	207536	246943	228798	238696	151094		3%	4%	3%	3%	3%	4%
rejected %	89%	88%	90%	90%	90%	54%	grade 1 events	110	96	138	139	125	325
								0%	0%	0%	0%	0%	0%
							grade 2 events	5905	6127	5766	4902	5738	24842
								2%	2%	2%	1%	2%	9%
							grade 3 events	2772	3027	2620	2785	2772	11320
								1%	1%	0%	1%	1%	4%
							grade 4 events	2573	3001	2736	2623	2645	11113
								1%	1%	1%	1%	1%	4%
							grade 5 events	8355	9465	8004	9908	10308	28748
								3%	4%	2%	3%	3%	10%
							grade 6 events	4691	5626	4356	4655	5703	65537
								1%	2%	1%	1%	2%	23%
							grade 7 events	203250	197970	238796	218749	228253	121999
								86%	84%	87%	86%	86%	44%

## 2.2 Compared Parameters

Parameter	Planned	Actual	Parameter	Planned	Actual
Instrument	ACIS	ACIS	Obspar format version number	7	7
Detector	ACIS-012367	ACIS-012367	Obspar file type	PREDICTED	ACTUAL
Grating	NONE	NONE	Obspar update status	NONE	UPDATED
Data mode	VFAINT	VFAINT	CCD I0 on	Y	Y
Observation mode	POINTING	POINTING	CCD I1 on	Y	Y
[deg] Pointing RA	150.410320	150.4176511063552	CCD I2 on	Y	Y
[deg] Pointing Dec	2.144694	2.118210044221249	CCD I3 on	Y	Y
[deg] Pointing Roll	255.000261	255.2086953826569	CCD S0 on	N	N
[mm] SIM focus pos	-0.782348	-0.7809083437167272	CCD S1 on	N	N
[mm] SIM defocus	0	0.001439871863259334	CCD S2 on	O1	Y
[mm] SIM translation stage pos	-233.592463	-233.5874344608287	CCD S3 on	O2	Y
[mm] SIM translation stage offset	0	-0.005018542100998502	CCD S4 on	N	N
[s] Observation start time (MET)	293857431.184000	293856232.83618	CCD S5 on	N	N
Observation start date	2007-04-25T03:02:46	2007-04-25T02:43:52	Number of optional ACIS chips dropped	0	0
[s] Observation end time (MET)	293889431.184000	293889948.16279	On-chip summing requested	N	N
Observation end date	2007-04-25T11:56:06	2007-04-25T12:05:48	Subarray requested	NONE	NONE
Read mode	TIMED	TIMED	Alternating exposures requested	N	N
			[s] Primary exposure time	0.000000	3.2

## 2.3 Aspect



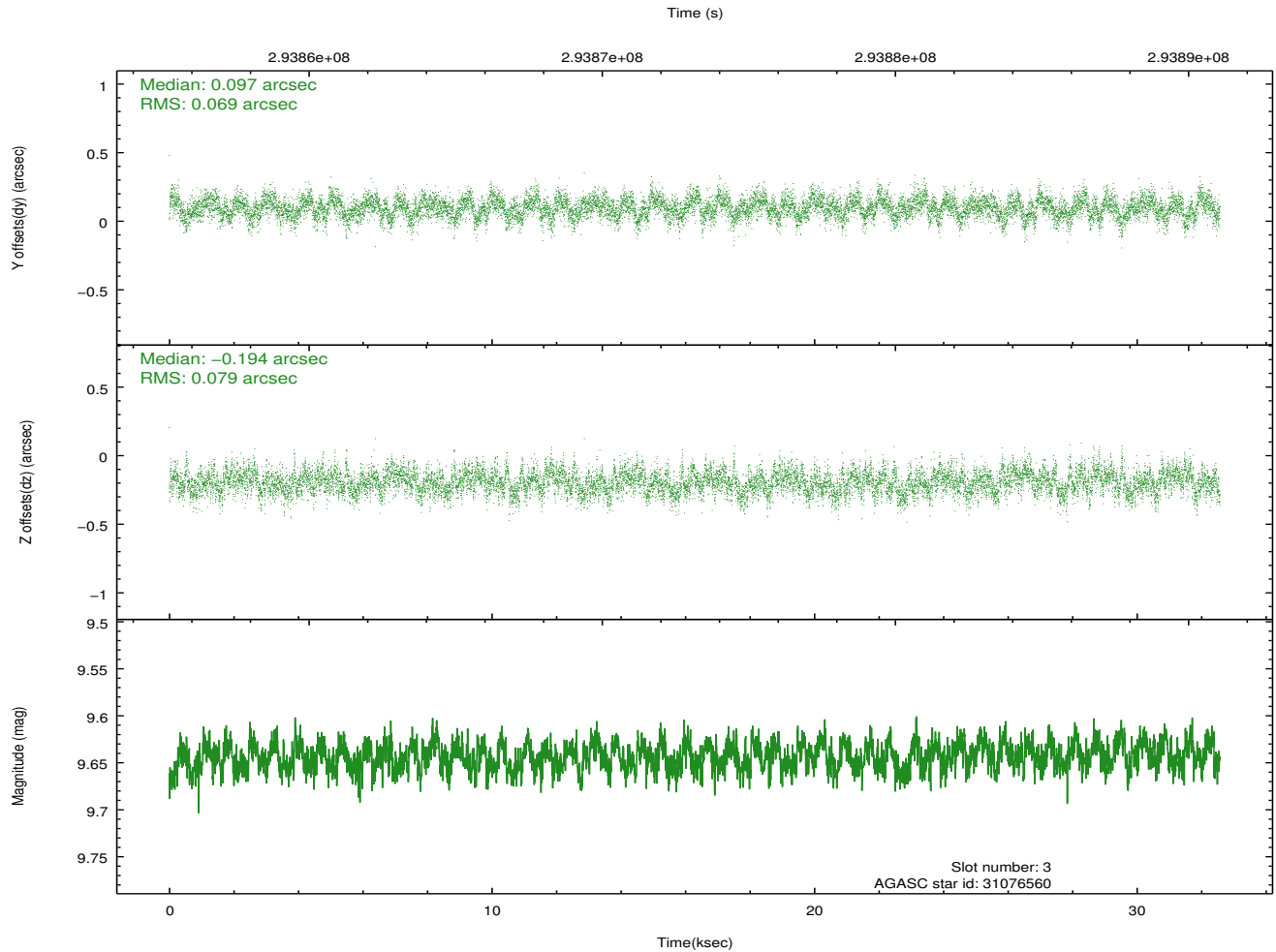
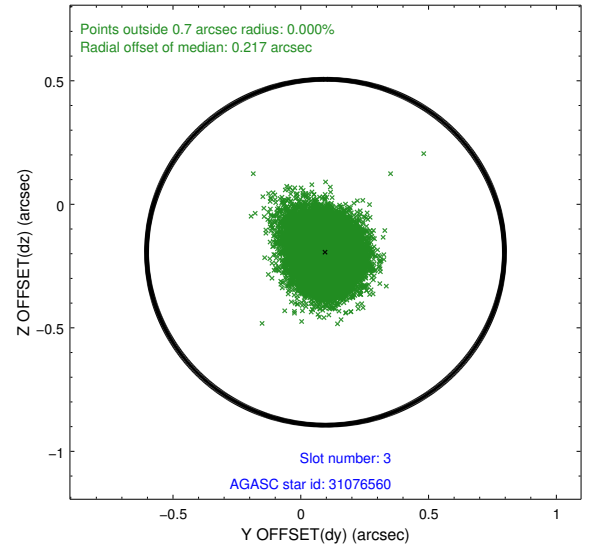
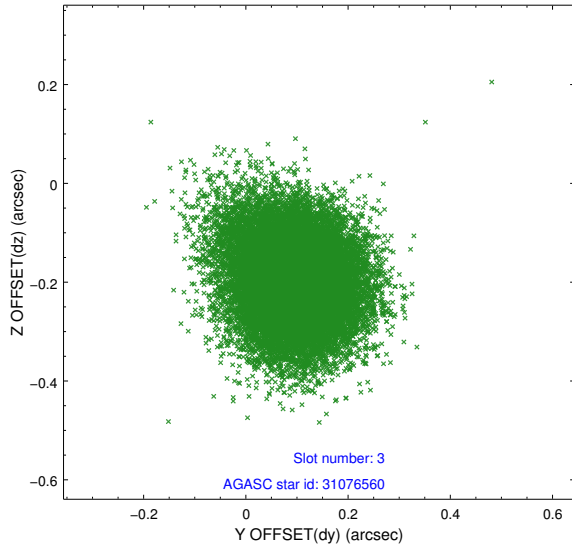


### Slot Statistics

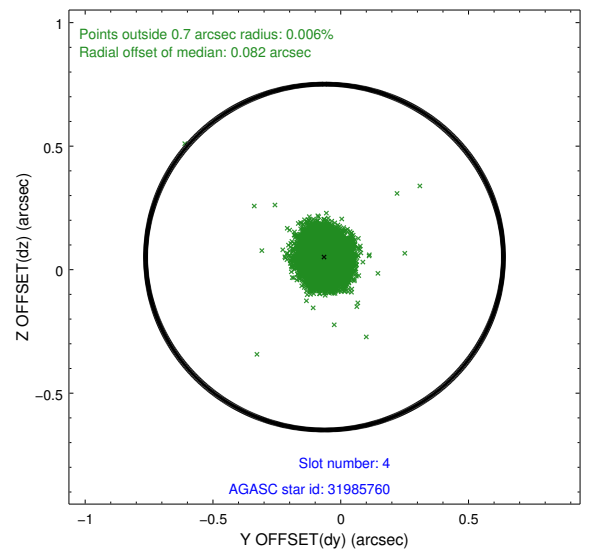
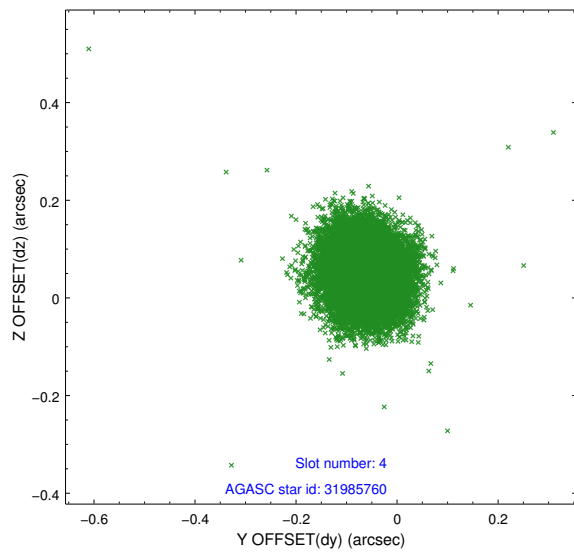
slot	status	id	mag	n_pts	med_dy	med_dz	dr1	dr2	ra	dec	mean_y	mean_z
0	FID	ACIS-I-1	7.23	7946	-0.013	0.004	0.014	0.024	0.000000	0.000000	927.79	-836.87
1	FID	ACIS-I-4	7.17	7944	0.181	0.026	0.017	0.026	0.000000	0.000000	2148.08	1062.92
2	FID	ACIS-I-5	7.23	7945	-0.266	0.040	0.012	0.020	0.000000	0.000000	-1820.38	1060.88
3	GUIDE	31076560	9.64	15880	0.097	-0.194	0.112	0.180	149.884782	2.009277	961.03	-1699.79
4	GUIDE	31985760	8.47	15885	-0.064	0.051	0.071	0.113	150.924581	2.094394	-304.06	1833.89
5	GUIDE	31986152	9.00	15874	0.125	0.201	0.113	0.178	150.840314	2.057585	-97.43	1575.63
6	GUIDE	32374896	9.22	15842	-0.134	-0.095	0.104	0.168	150.682269	2.512794	-1533.02	601.79
7	GUIDE	32375384	10.00	15864	-0.027	0.028	0.143	0.251	150.238117	2.622063	-1499.28	-1043.30

## 2.4 Star Slots

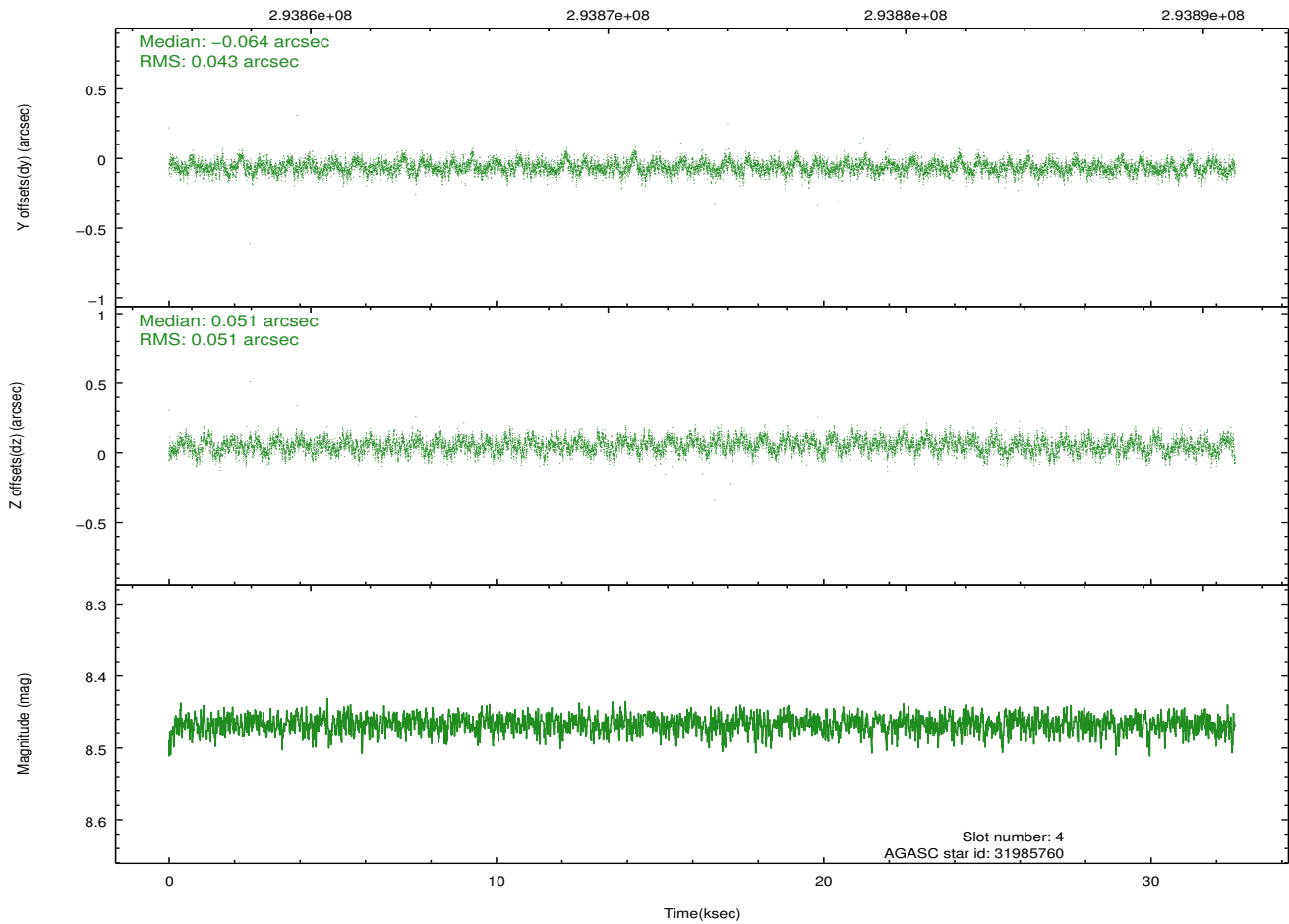
### 2.4.1 Slot 3



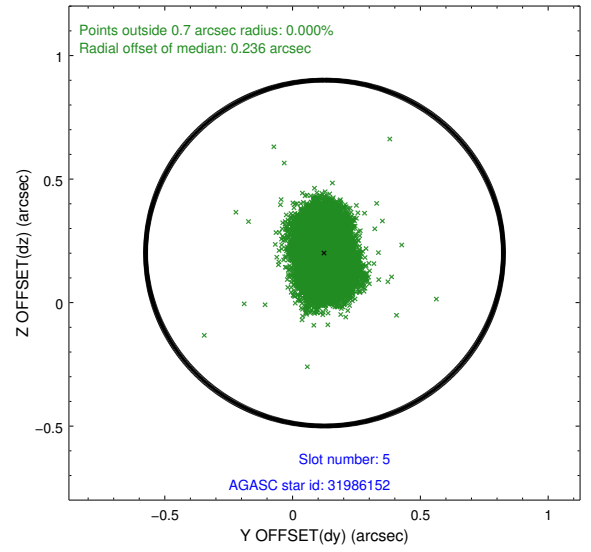
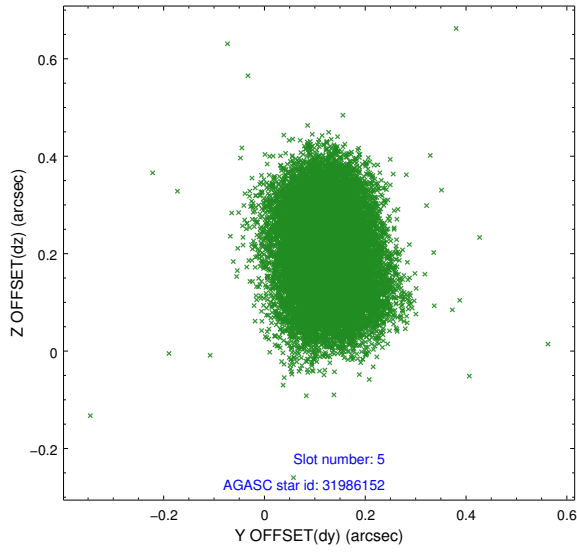
## 2.4.2 Slot 4



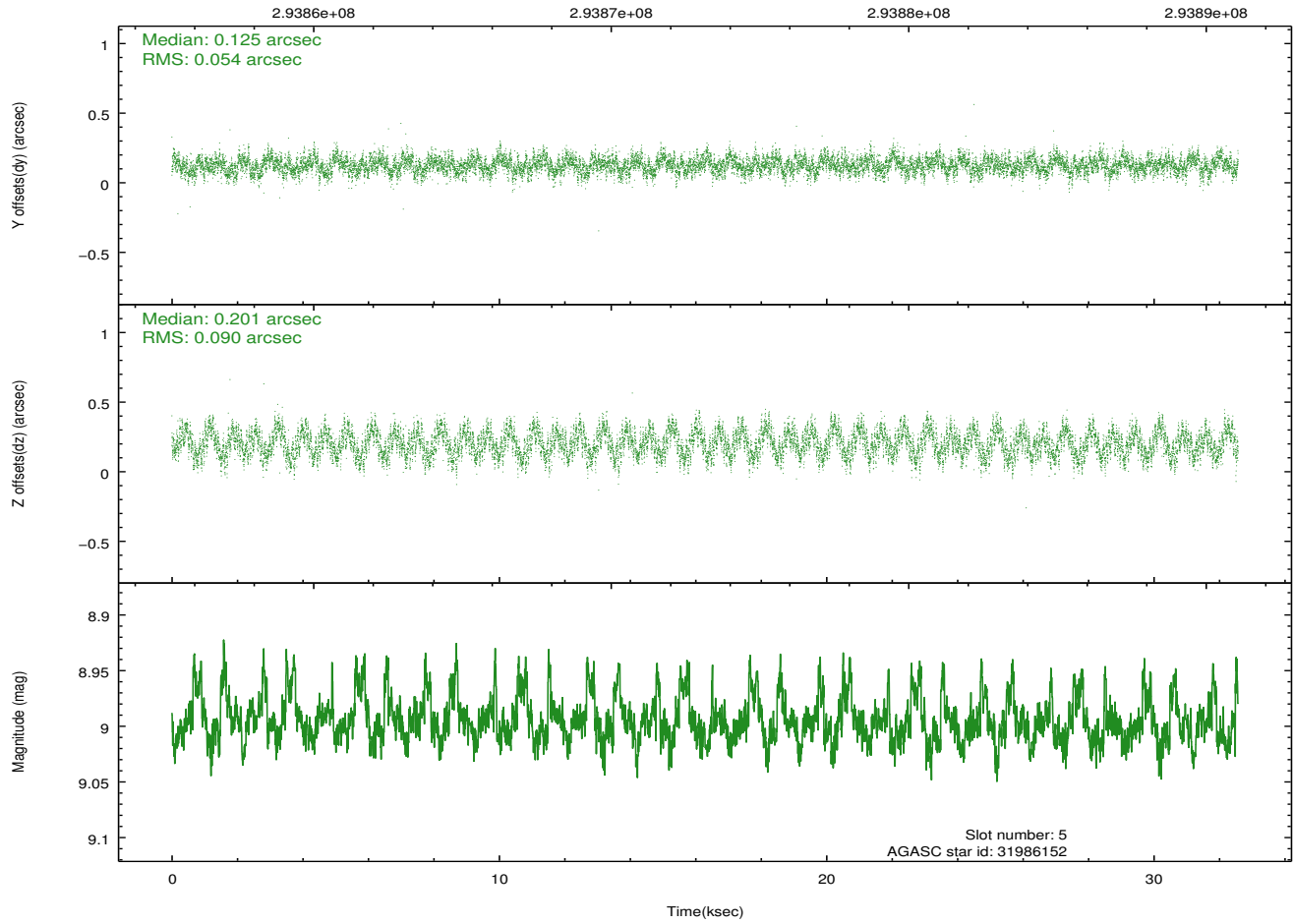
Time (s)



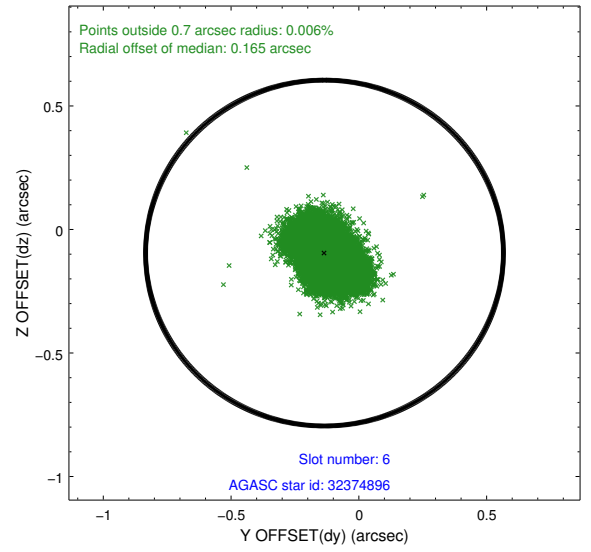
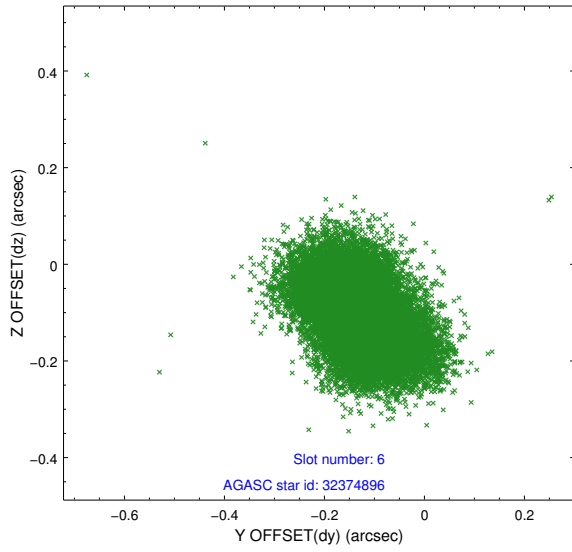
### 2.4.3 Slot 5



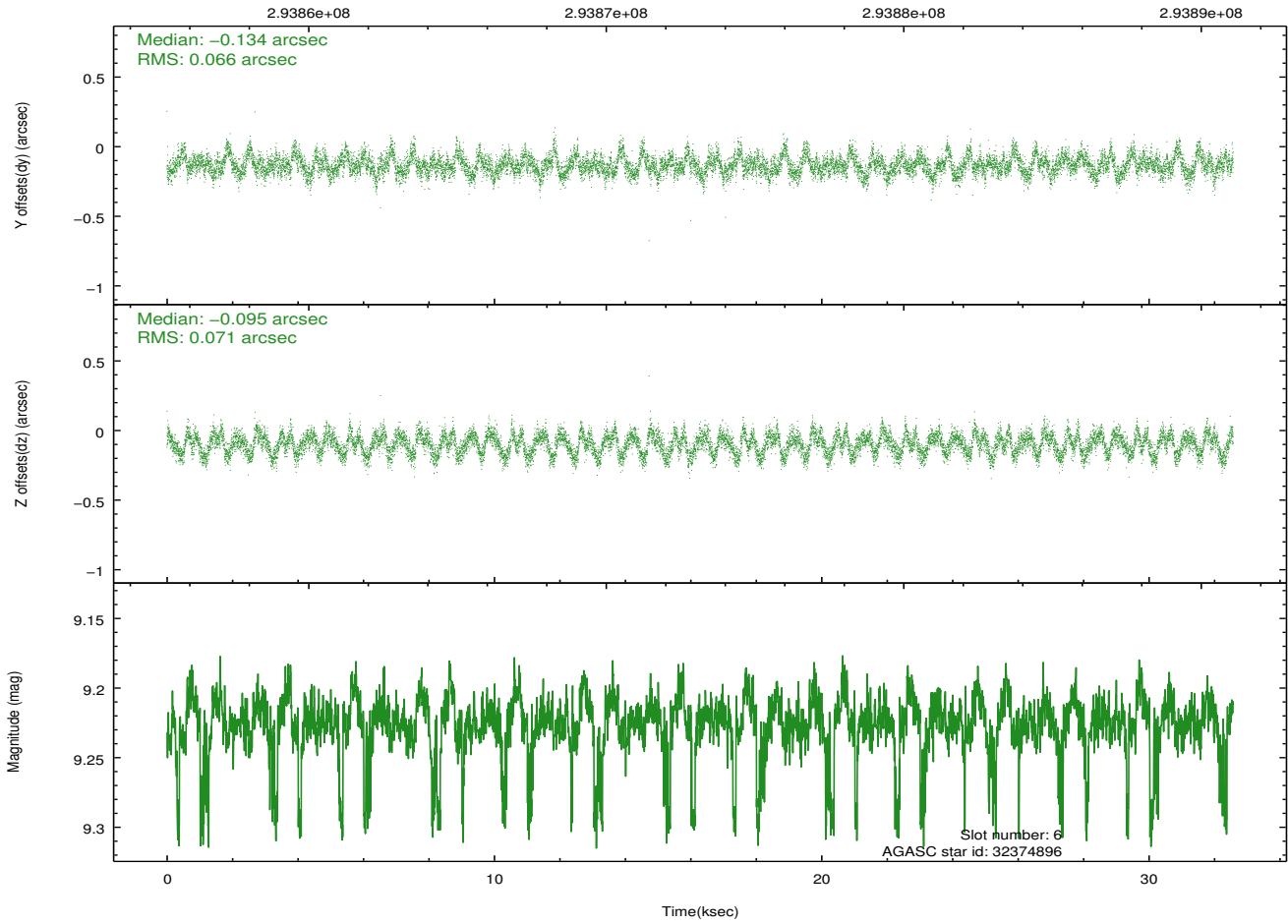
Time (s)



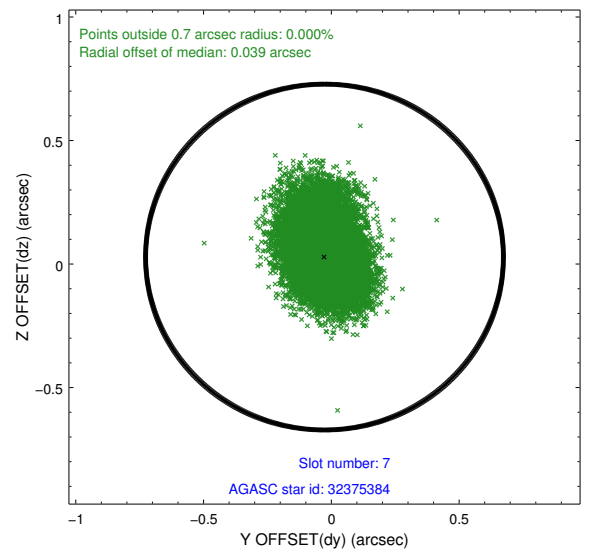
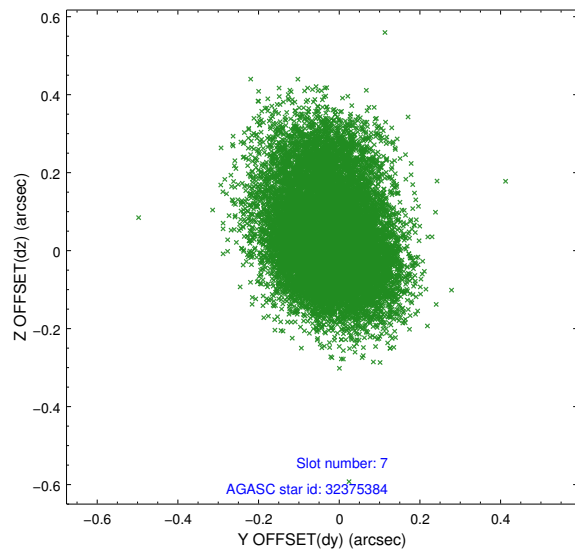
### 2.4.4 Slot 6



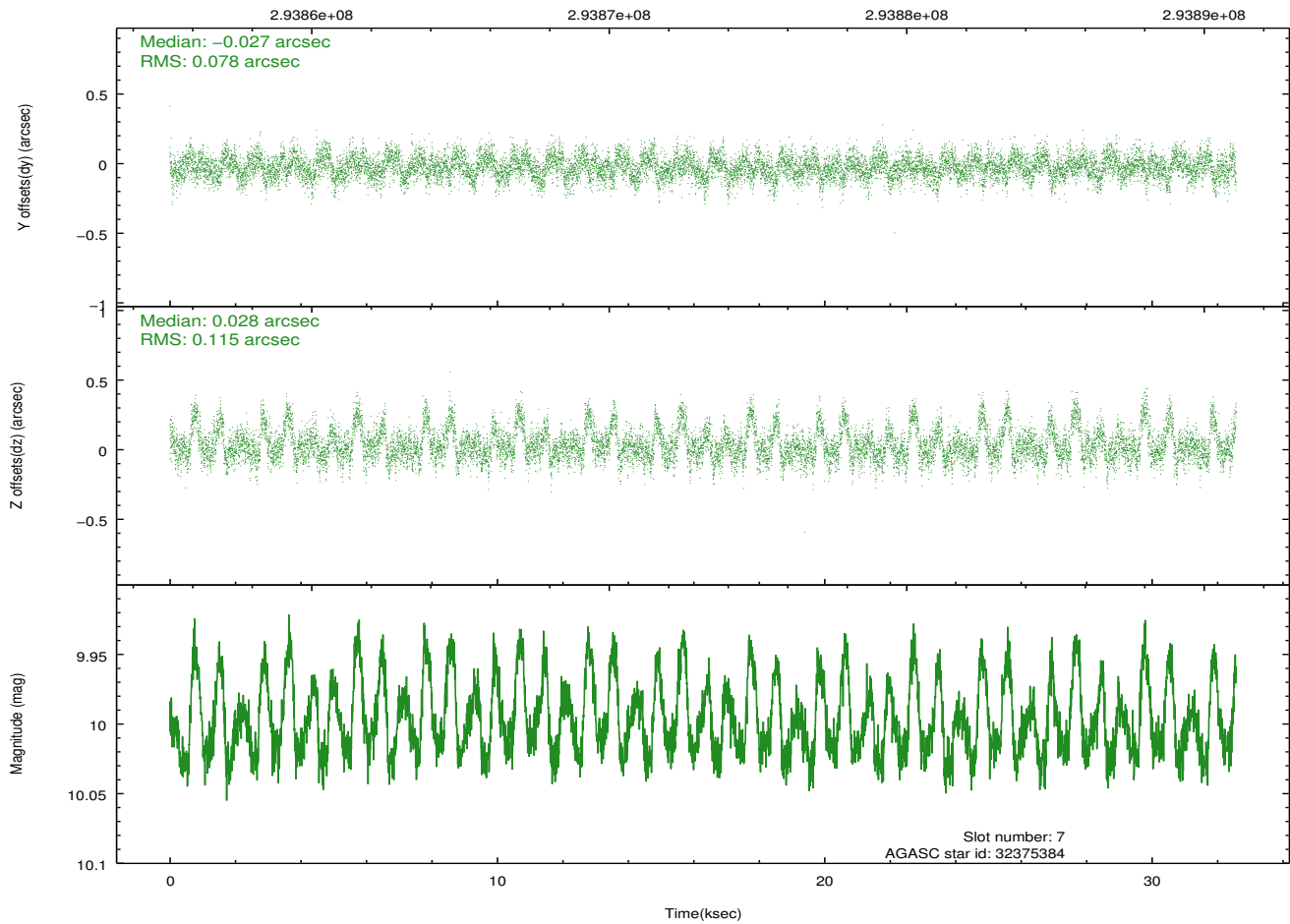
Time (s)



## 2.4.5 Slot 7

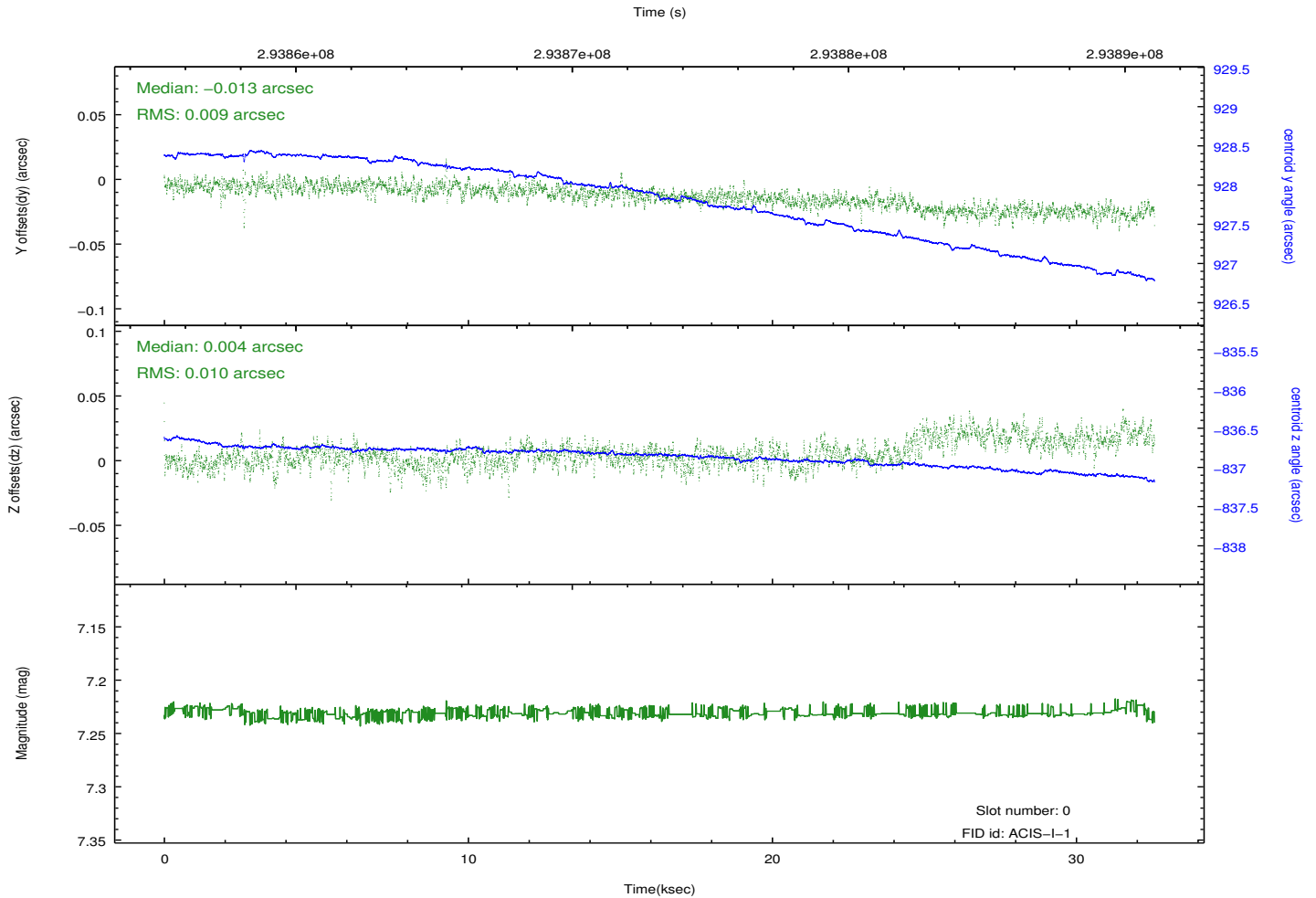
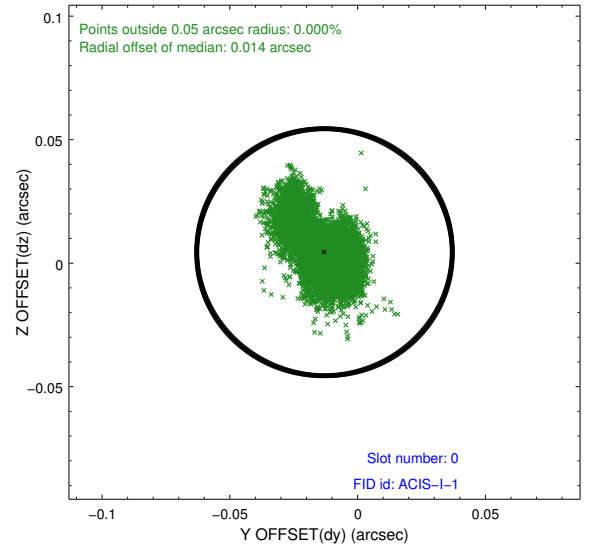
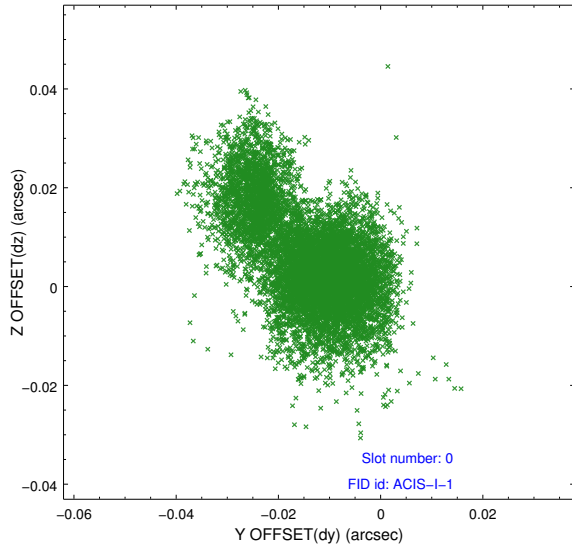


Time (s)

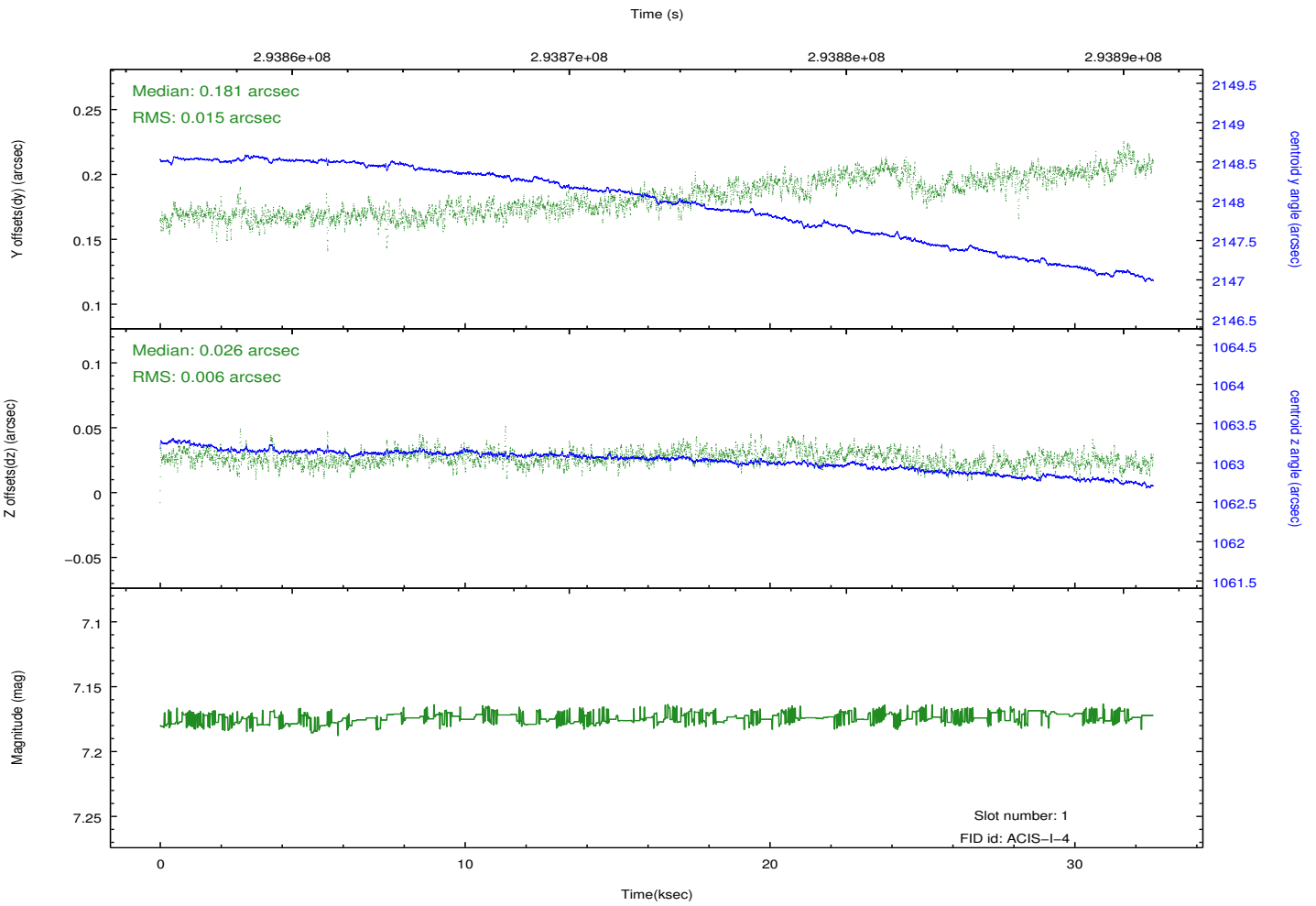
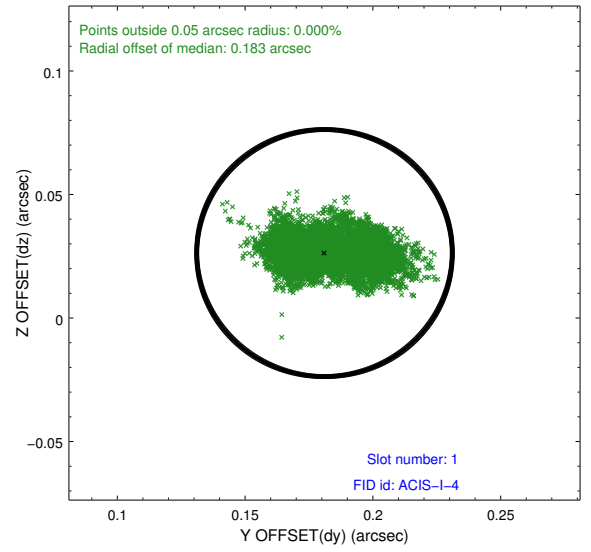
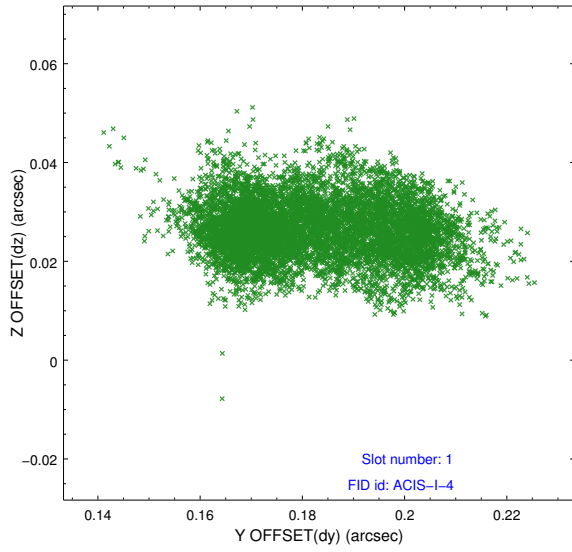


## 2.5 FID Slots

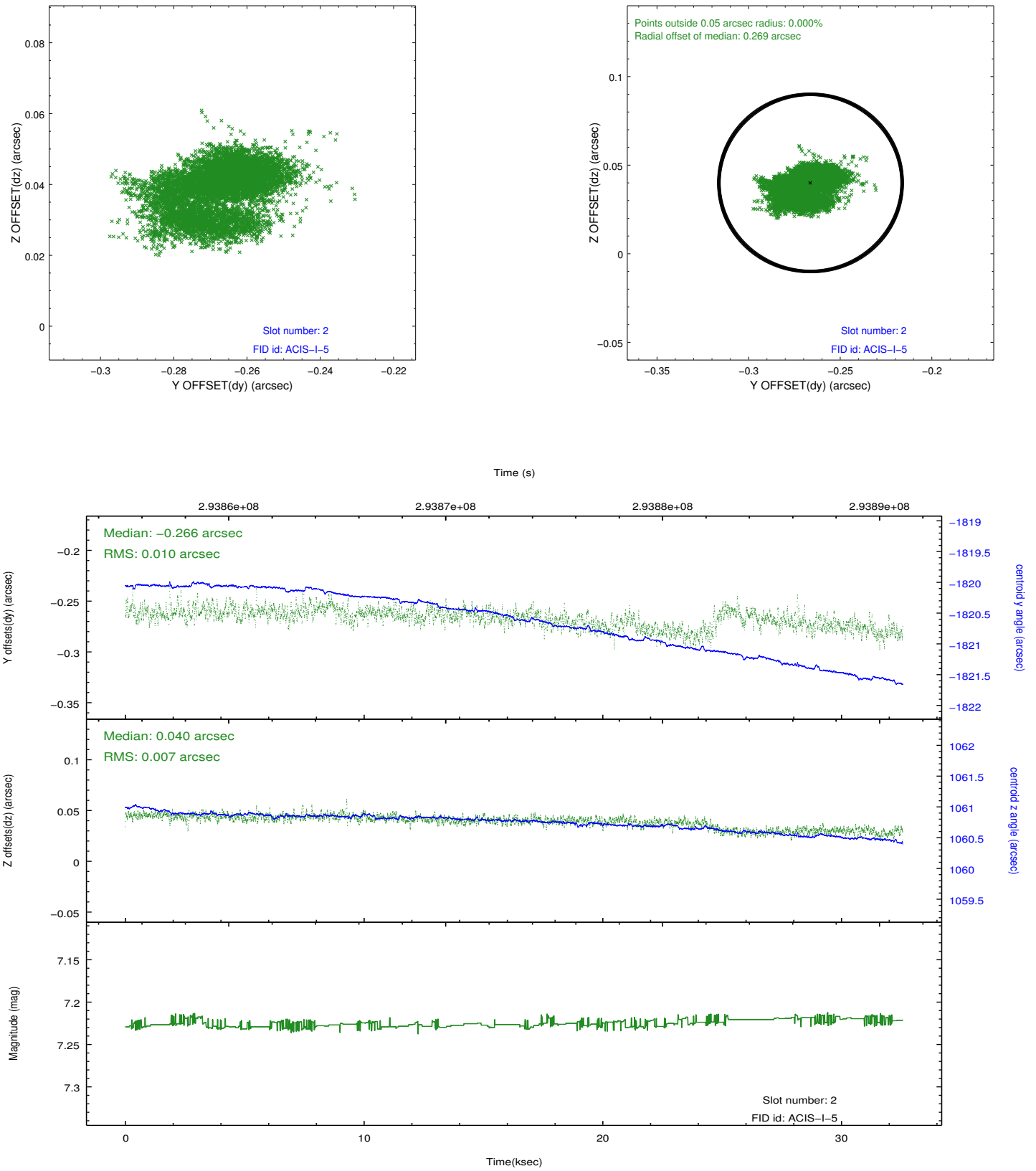
### 2.5.1 Slot 0



## 2.5.2 Slot 1



### 2.5.3 Slot 2



## A Summary

### A.1 Status

V&V Scientist	Beth Sundheim
V&V Date (YYYY-MM-DD)	2012.04.24
V&V Edition	1
V&V Disposition and Status	OK
V&V Charge Time	32.0383588

### A.2 Comments