

V&V Reference Report

L2 ASCDS Version : 8.4.4

Observation 8505 - L2 Version 5
Chandra X-Ray Center

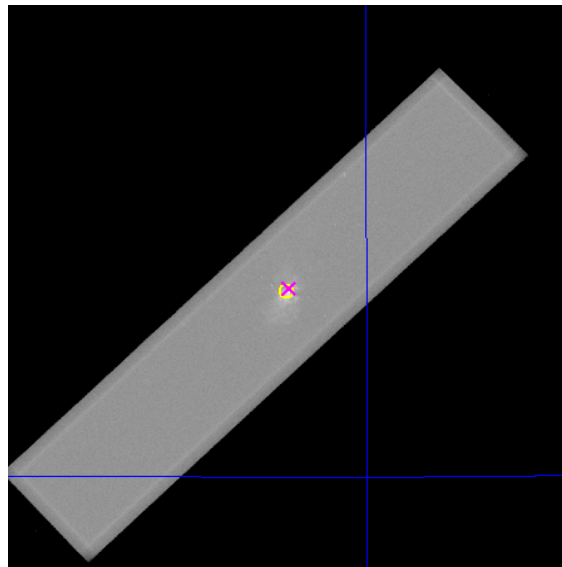
L2 Processing Date : Jun 29 2013

Contents

1	Front	2
2	OBI	3
2.1	OBI	3
2.1.1	Images	3
2.1.2	Parameters	4
2.1.3	Events	4
2.2	Compared Parameters	5
2.3	Aspect	6
2.4	Star Slots	9
2.4.1	Slot 3	9
2.4.2	Slot 4	10
2.4.3	Slot 5	11
2.4.4	Slot 6	12
2.4.5	Slot 7	13
2.5	FID Slots	14
2.5.1	Slot 0	14
2.5.2	Slot 1	15
2.5.3	Slot 2	16
A	Summary	17
A.1	Status	17
A.2	Comments	17

1 Front

seq_num	600626	Sequence number
obs_id	8505	Observation id
title	Searching for X-Ray Pulsars in M82	Proposal title
observer	Prof. Philip Kaaret	Principal investigator
object	M82	Source name
ra_targ	148.9675	Observer's specified target RA [deg]
dec_targ	69.679694	Observer's specified target Dec [deg]
ra_nom	148.95772455174	Nominal RA [deg]
dec_nom	69.683033518095	Nominal Dec [deg]
roll_nom	136.07650839093	Nominal Roll [deg]
revision	5	Processing version of data
ontime	83620.785212159	[s]
livetime	83217.388313627	Ontime multiplied by DTCOR
l2events	4201890	Number of level 2 events

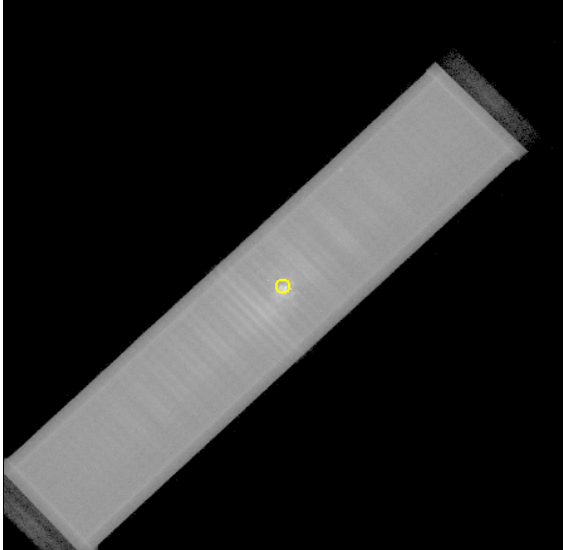


2 OBI

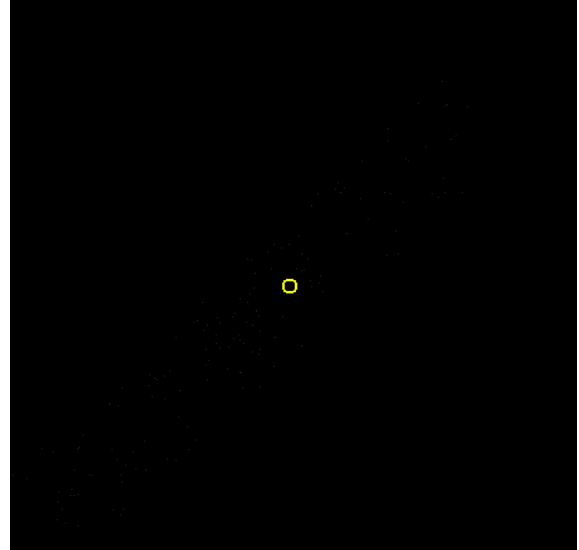
2.1 OBI

2.1.1 Images

Level 1 Image



Level 1 Bad Events



2.1.2 Parameters

obi_num	0	Obi number	sched_exp_time	83871.000000	[s] Scheduled observation exposure time
ascdsver	10	Processing system revision	ontime	83620.785212159	[s]
caldsver	4.5.7	 	l1events	5891992	Number of level 1 events
date	2013-06-29T07:13:02	Date and time of file creation			
revision	5	Processing version of data			

2.1.3 Events

Level 1 Events

	segment 1	segment 2	segment 3
level 1 events	6840	5885133	19
rejected events	4	3616	6
rejected %	0%	0%	31%

2.2 Compared Parameters

Parameter	Planned	Actual	Parameter	Planned	Actual
Instrument	HRC	HRC	Obspar format version number	7	7
Detector	HRC-S	HRC-S	Obspar file type	PREDICTED	ACTUAL
Grating	NONE	NONE	Obspar update status	NONE	UPDATED
Data mode	OBSERVING	OBSERVING			
Observation mode	POINTING	POINTING			
[deg] Pointing RA	149.038879	148.9577245517444			
[deg] Pointing Dec	69.677505	69.68303351809539			
[deg] Pointing Roll	135.933069	136.0765083909306			
[mm] SIM focus pos	-1.533336	-1.526339935833849			
[mm] SIM defocus	7.710433287538843e-07	0.006996703570447904			
[mm] SIM translation stage pos	250.455976	250.466033080201			
[mm] SIM translation stage offset	0	-0.01005468664627074			
[s] Observation start time (MET)	284955853.184000	284955229.78799			
Observation start date	2007-01-12T02:23:08	2007-01-12T02:13:49			
[s] Observation end time (MET)	285039724.184000	285040228.94202			
Observation end date	2007-01-13T01:40:59	2007-01-13T01:50:28			

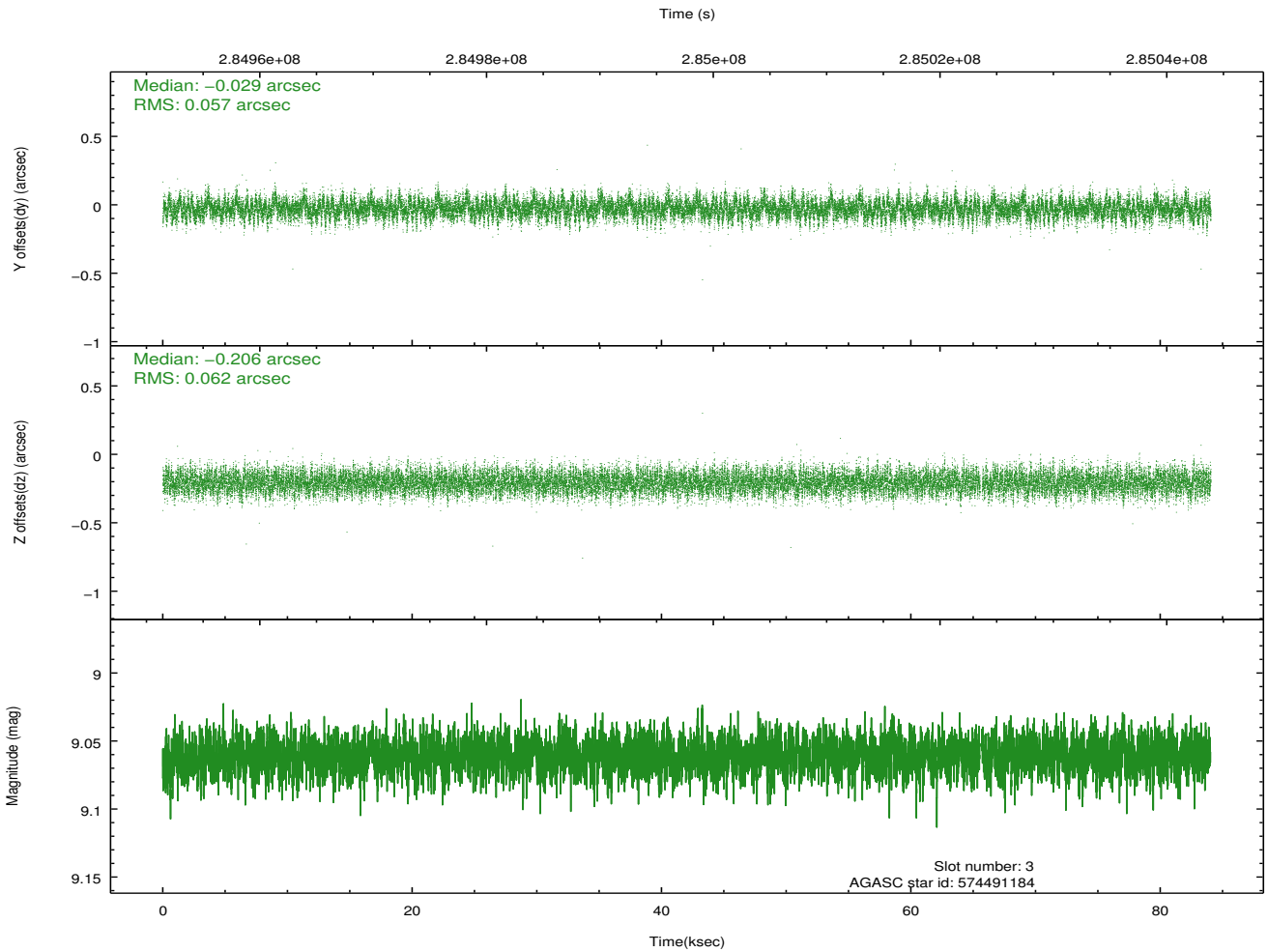
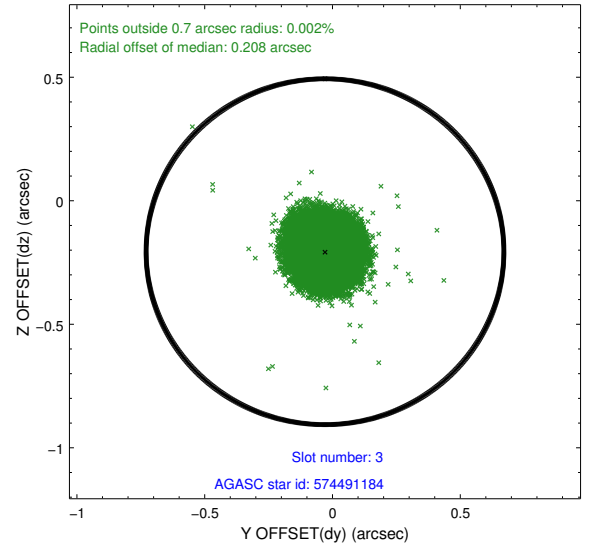
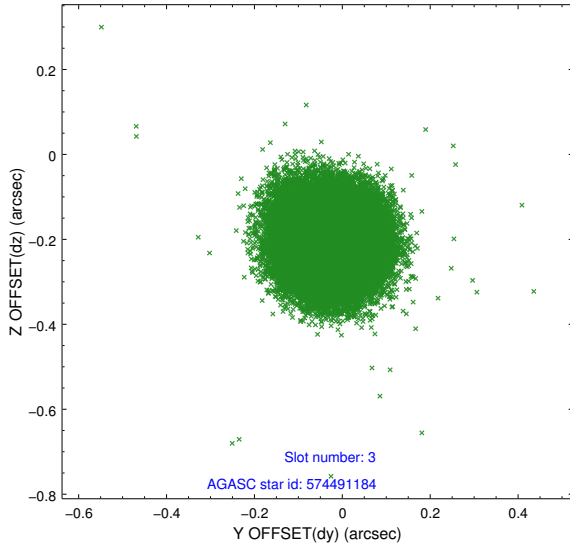
2.3 Aspect

Slot Statistics

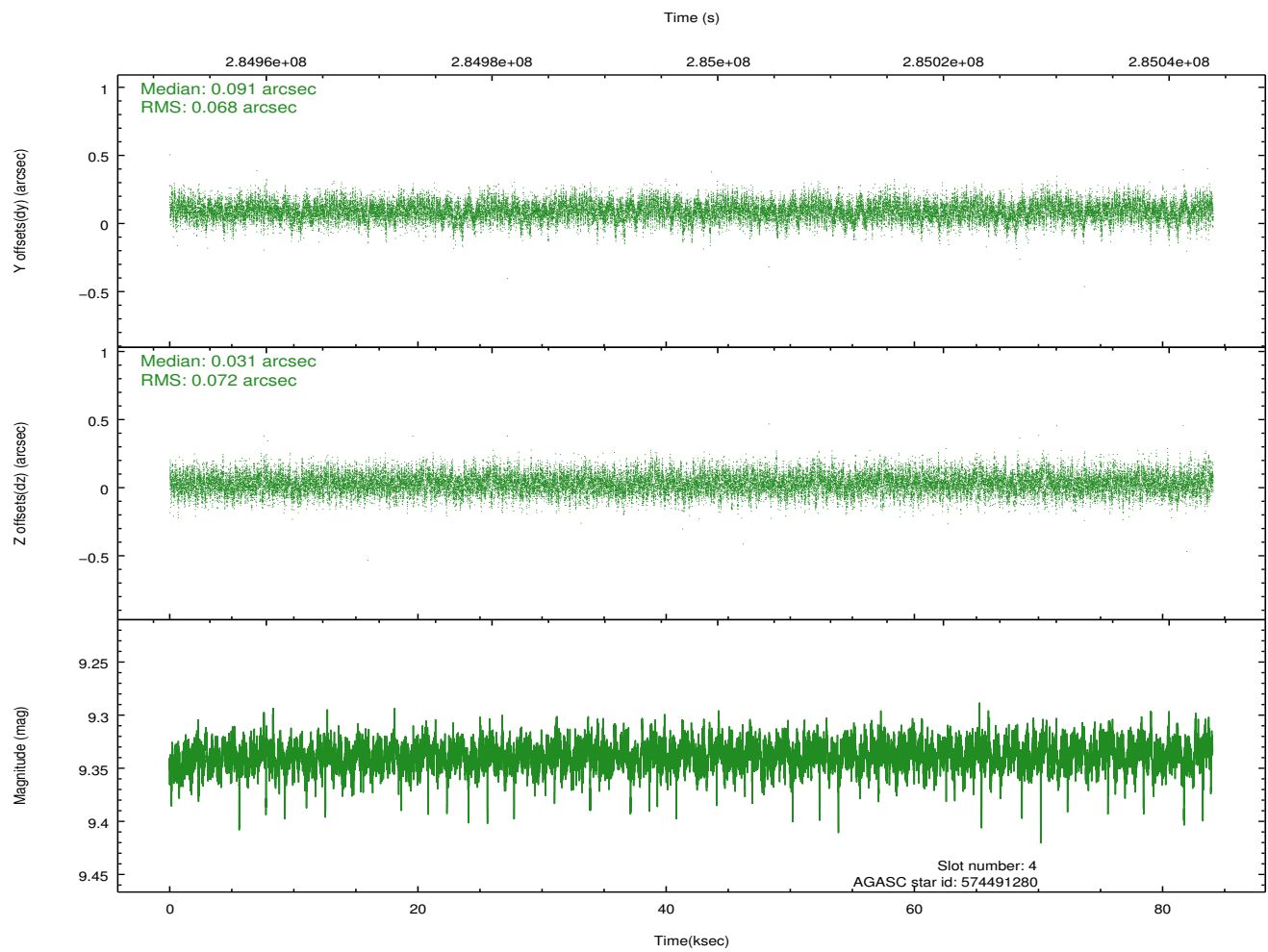
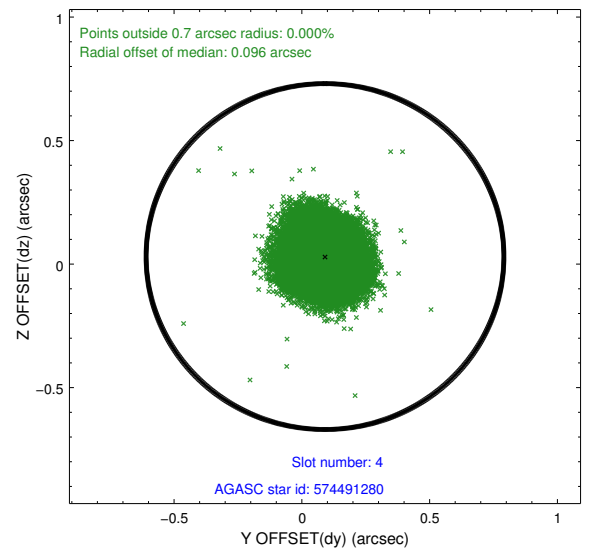
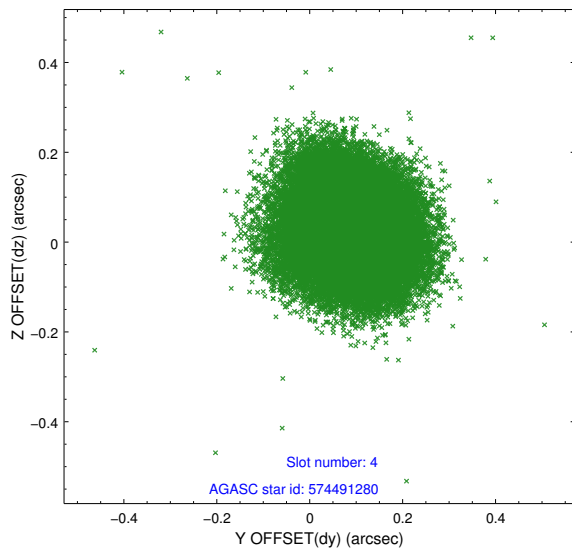
slot	status	id	mag	n_pts	med_dy	med_dz	dr1	dr2	ra	dec	mean_y	mean_z
0	FID	HRC-S-1	7.01	20501	0.065	-0.201	0.012	0.038	0.000000	0.000000	-1170.60	-463.38
1	FID	HRC-S-2	7.00	20503	0.234	-0.118	0.021	0.035	0.000000	0.000000	1229.16	-455.98
2	FID	HRC-S-3	7.02	20502	0.088	0.017	0.022	0.059	0.000000	0.000000	-1173.23	566.32
3	GUIDE	574491184	9.06	40898	-0.029	-0.206	0.091	0.143	148.582453	69.768699	638.19	157.68
4	GUIDE	574491280	9.34	40980	0.091	0.031	0.104	0.173	148.611567	69.450135	-179.77	963.38
5	GUIDE	574491872	9.27	40706	-0.116	-0.043	0.097	0.158	147.207613	69.765453	1880.49	1335.78
6	GUIDE	574886464	9.78	40825	-0.040	0.149	0.135	0.228	149.898674	70.203982	570.92	-2095.94
7	GUIDE	574886496	8.49	40978	0.094	0.071	0.084	0.141	148.945563	70.041136	993.59	-860.79

2.4 Star Slots

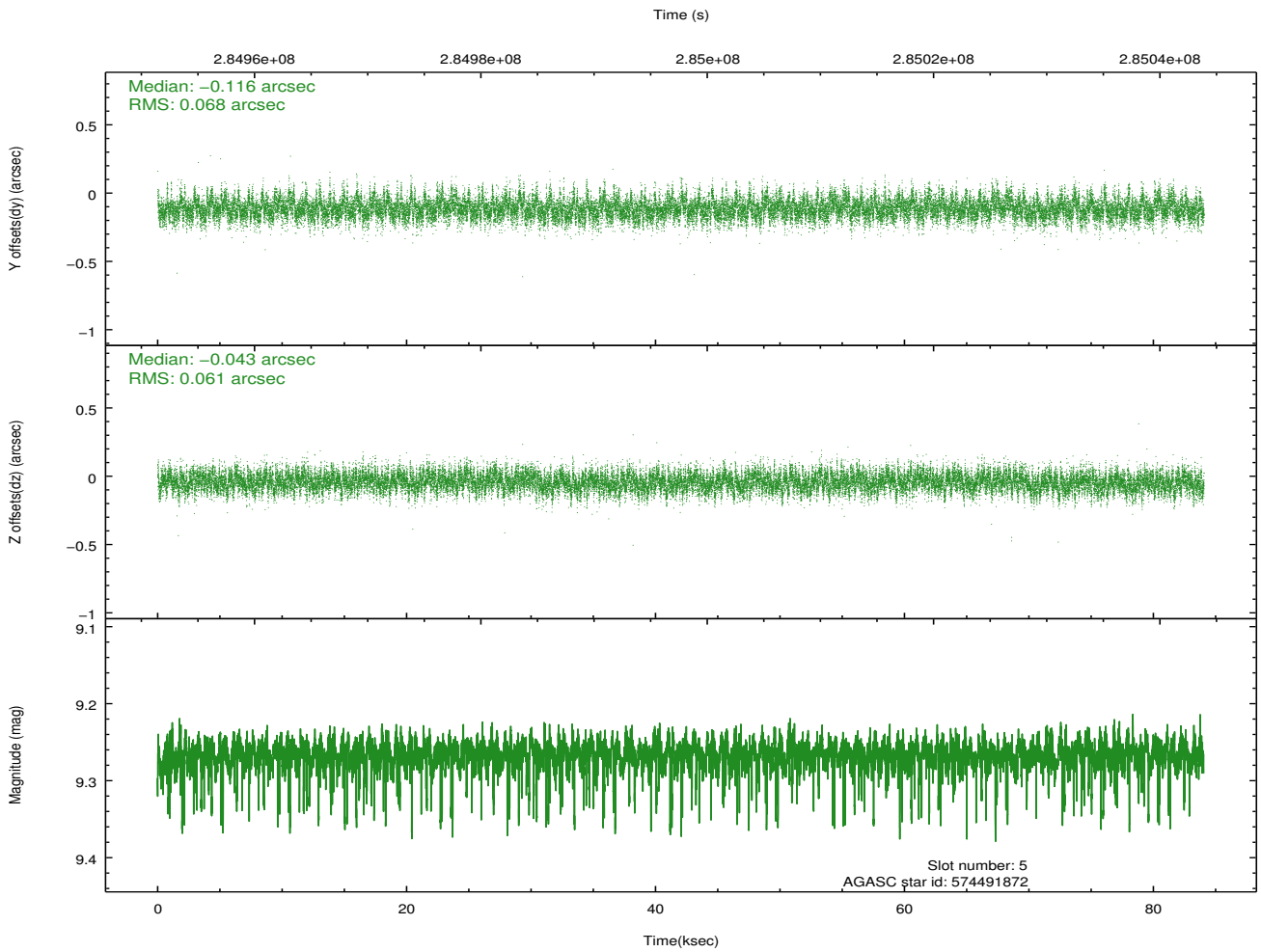
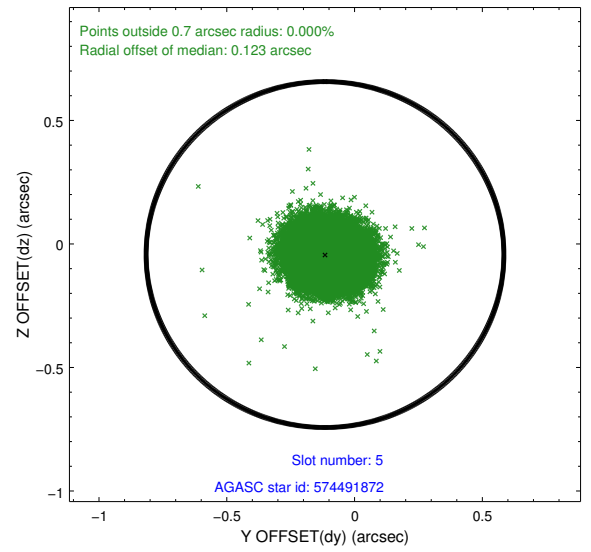
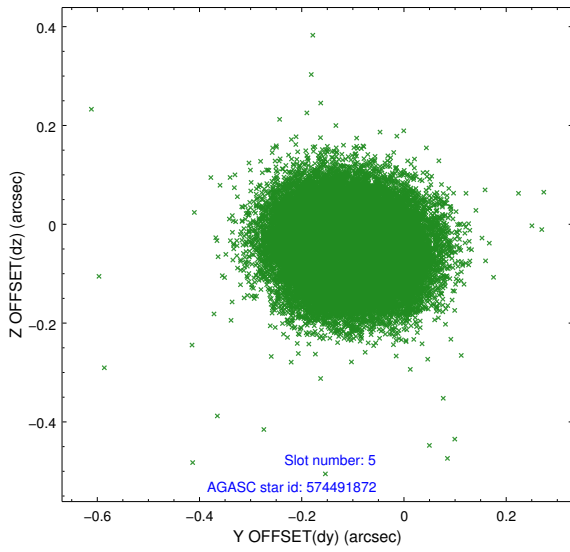
2.4.1 Slot 3



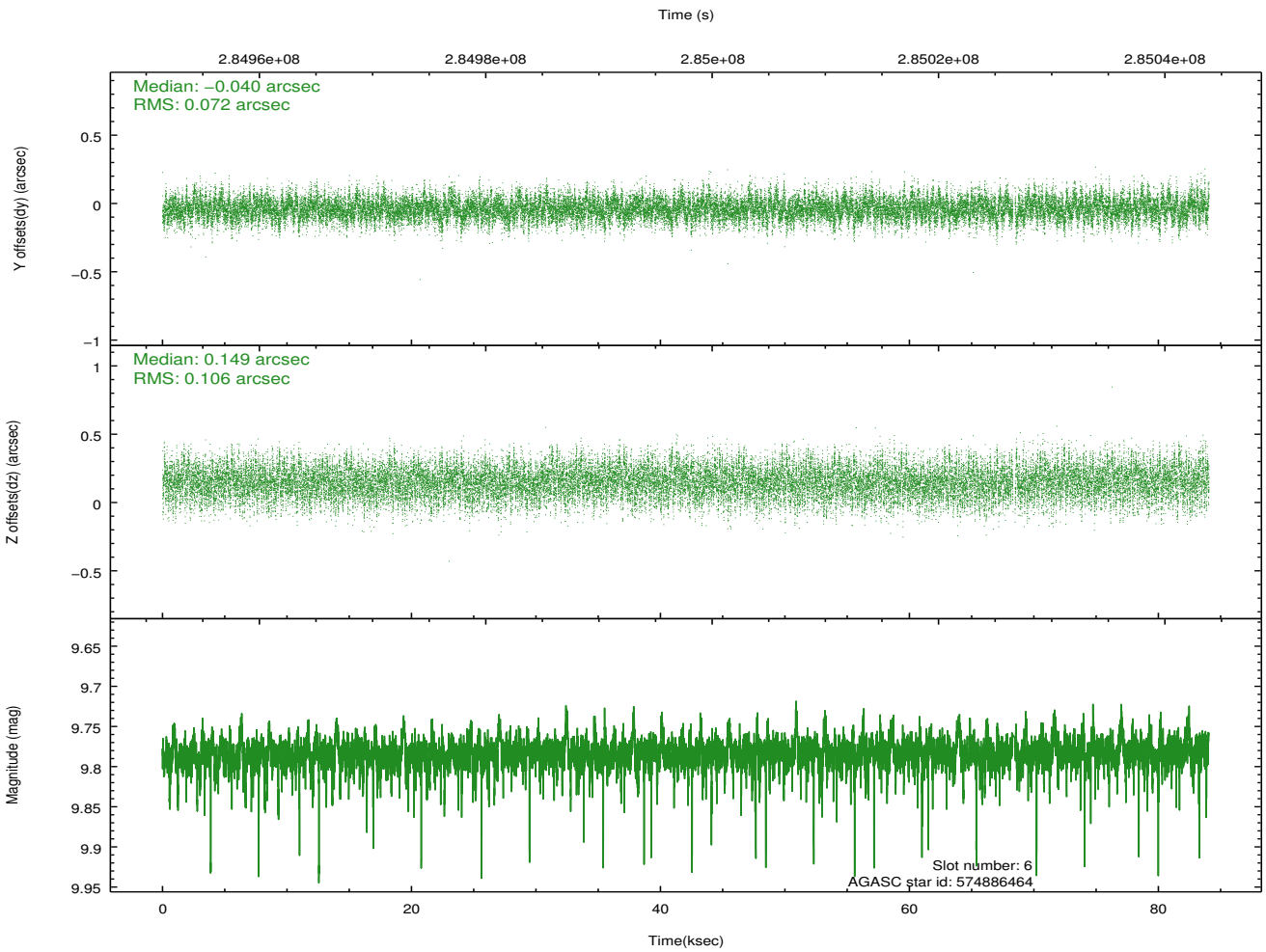
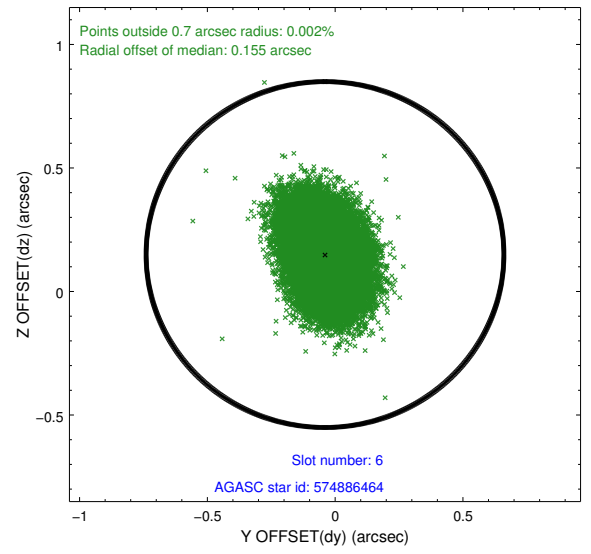
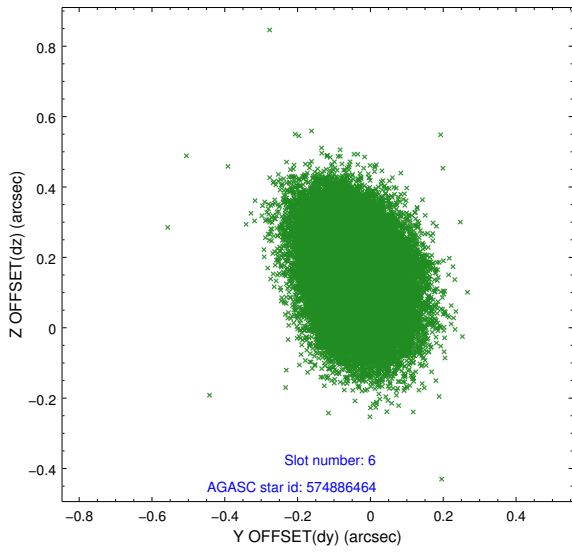
2.4.2 Slot 4



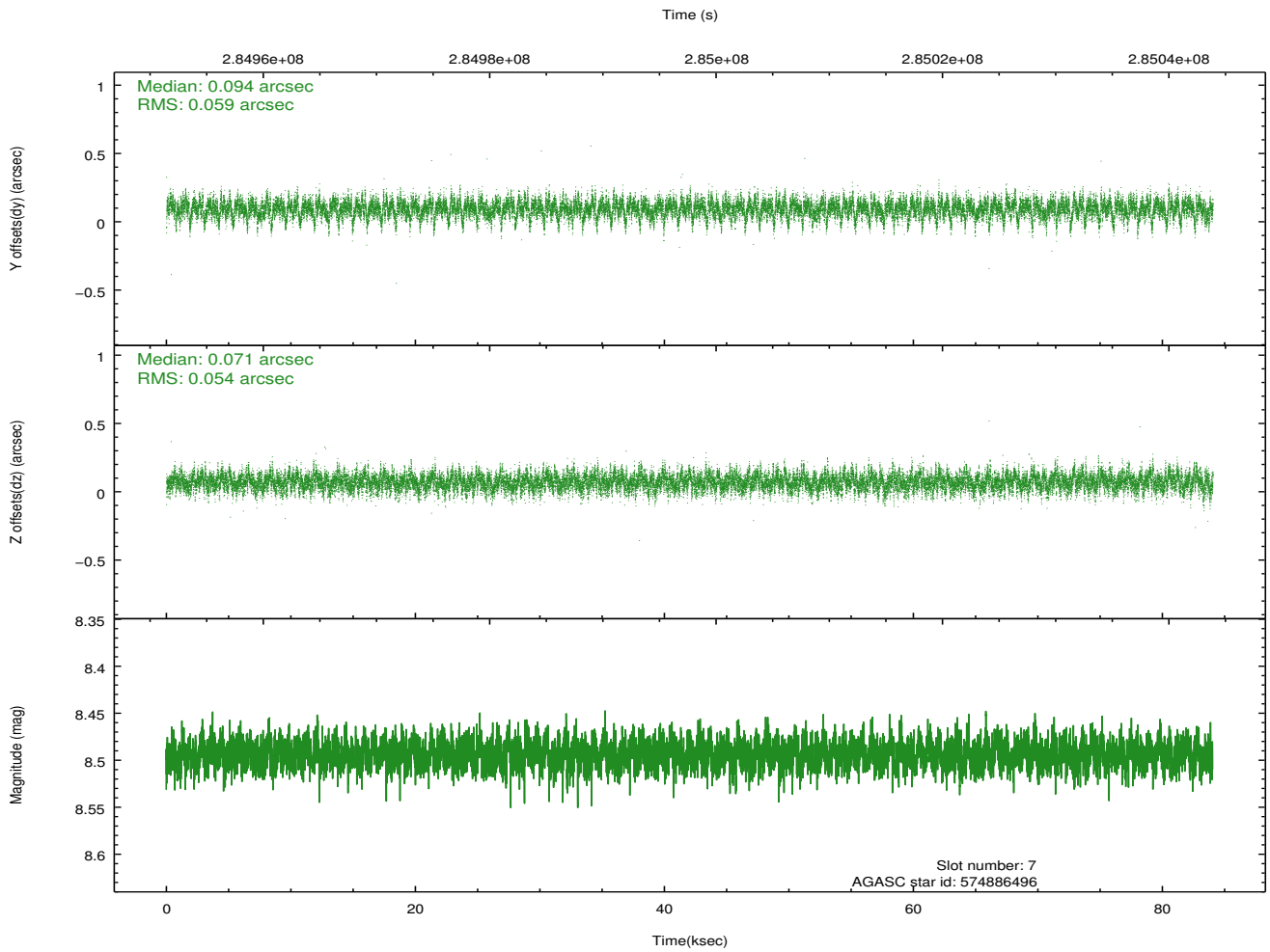
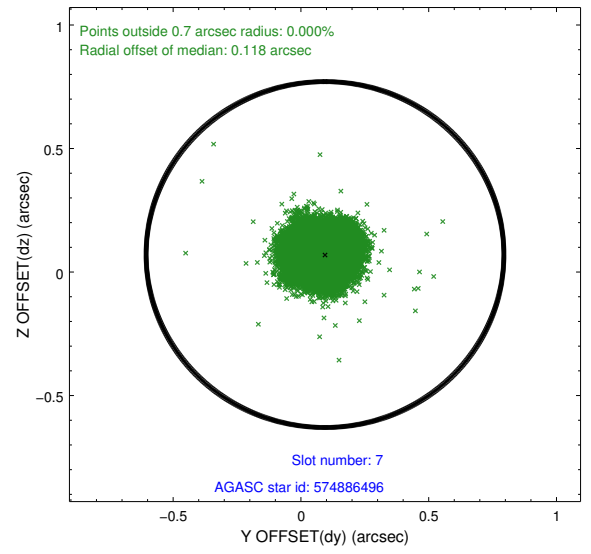
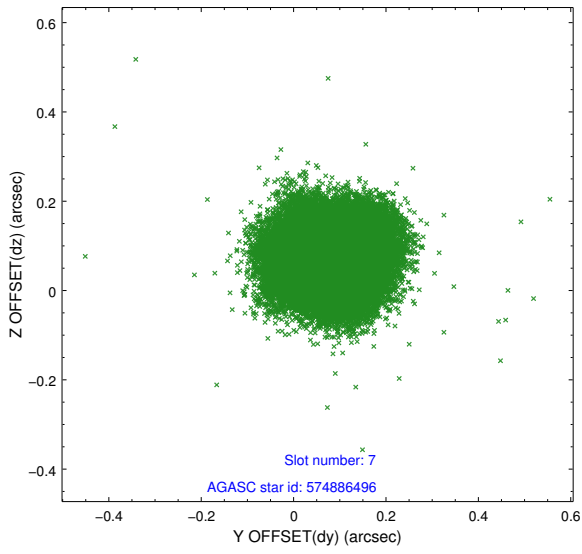
2.4.3 Slot 5



2.4.4 Slot 6

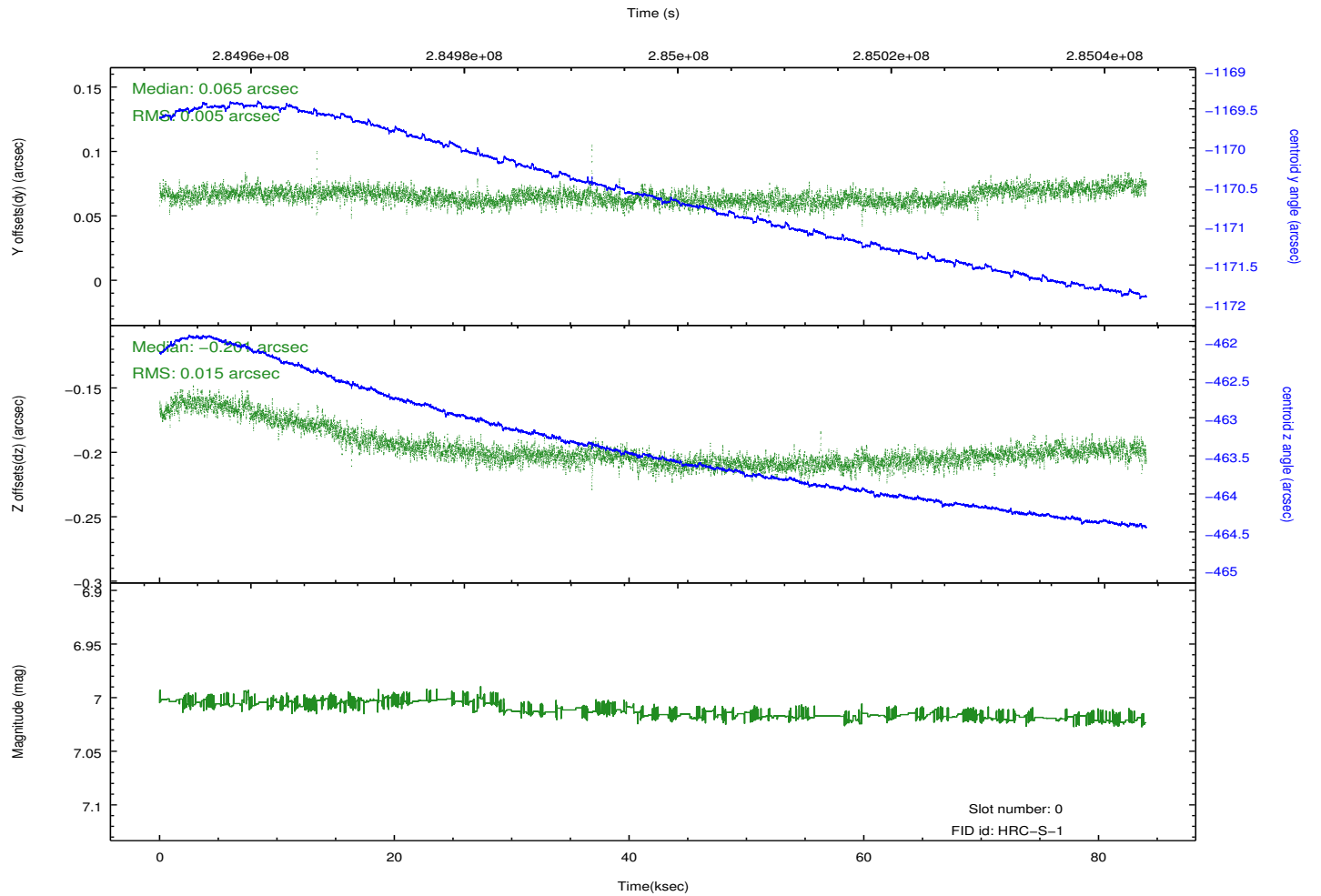
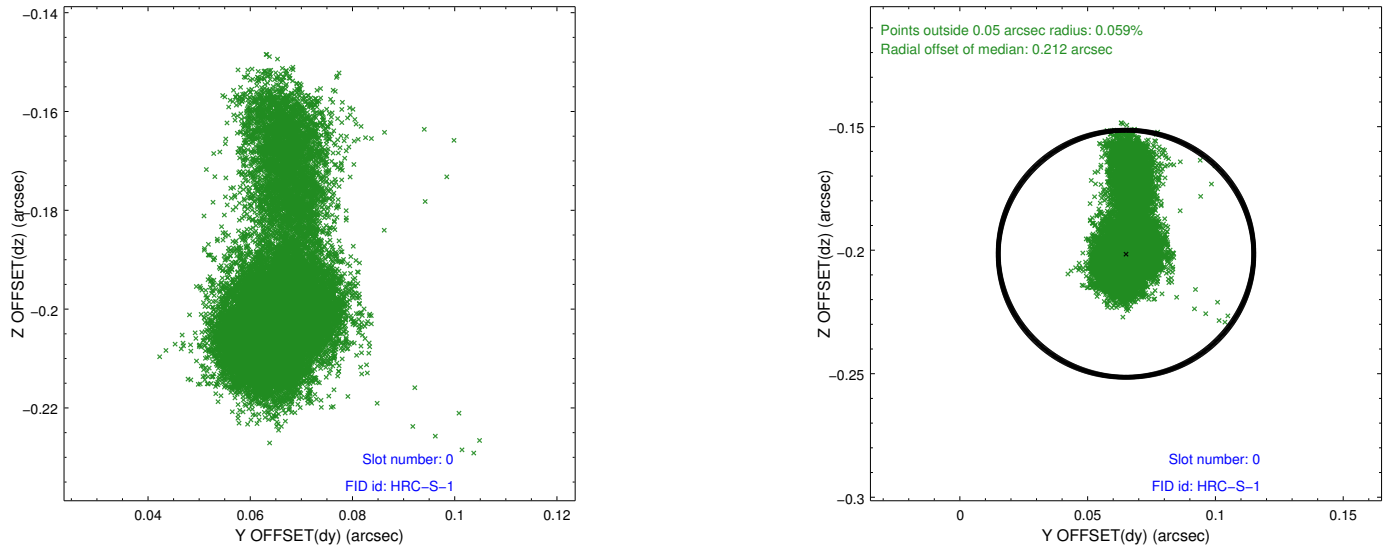


2.4.5 Slot 7

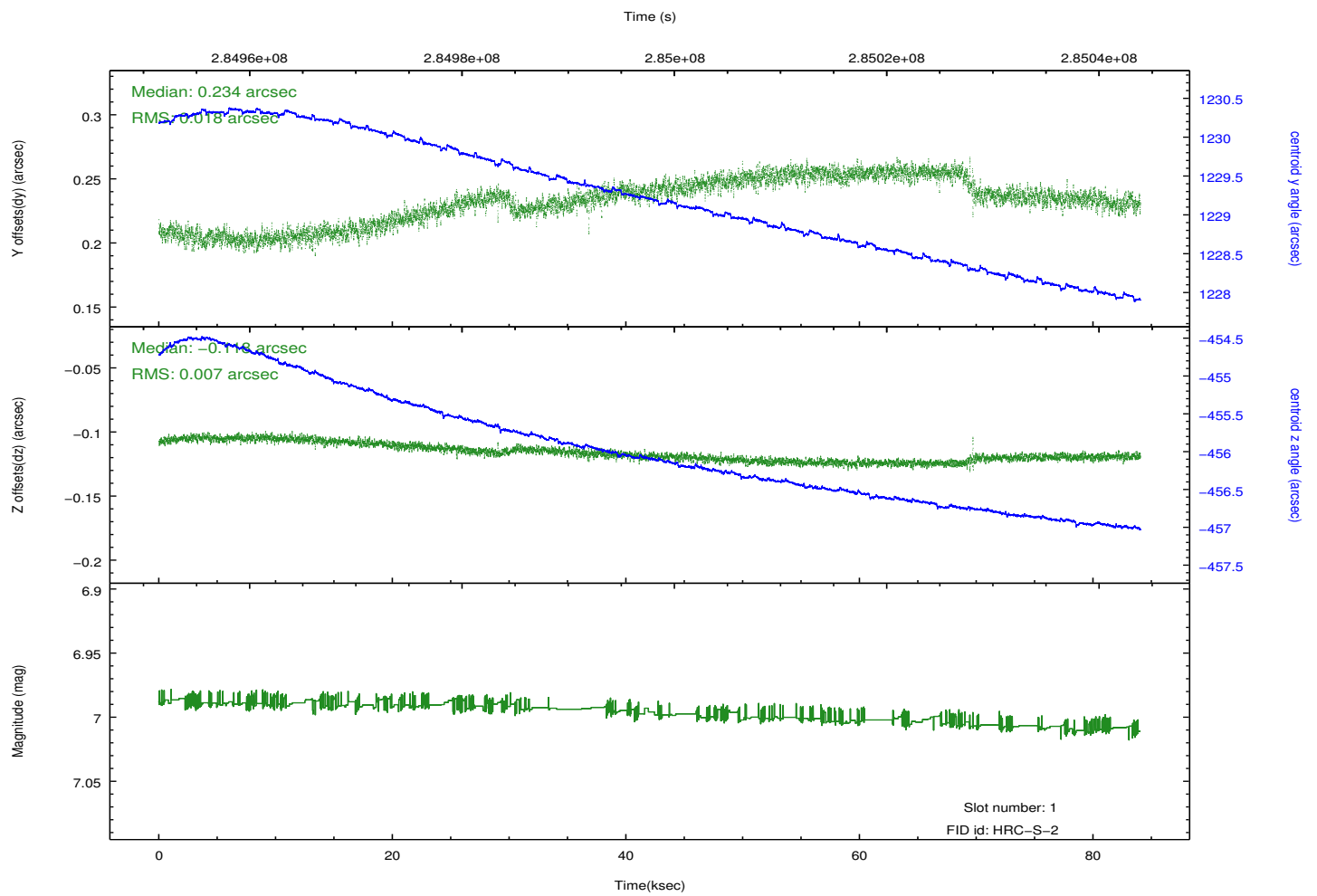
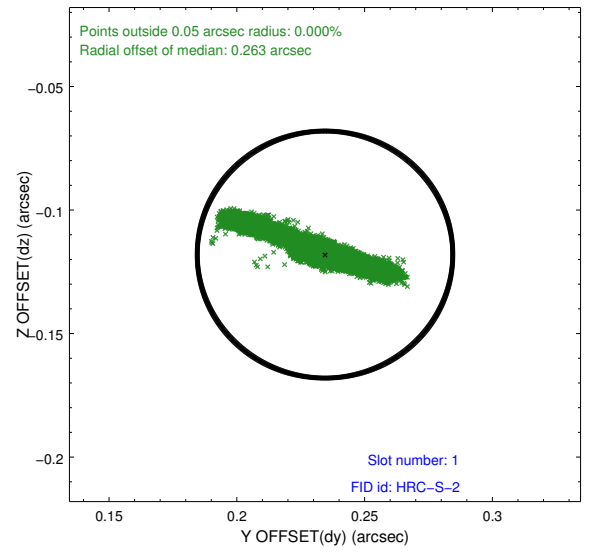
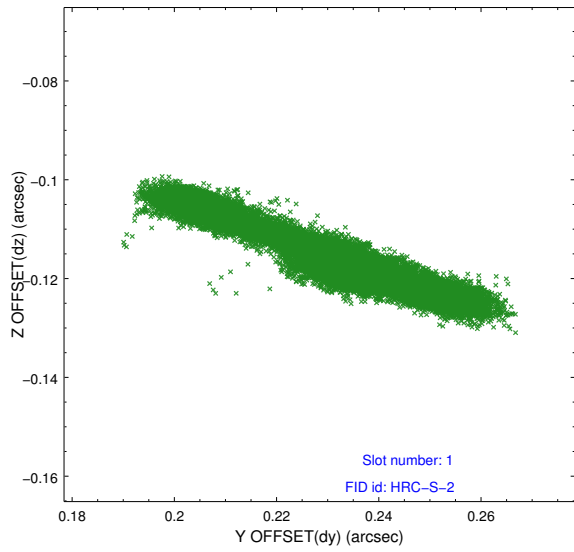


2.5 FID Slots

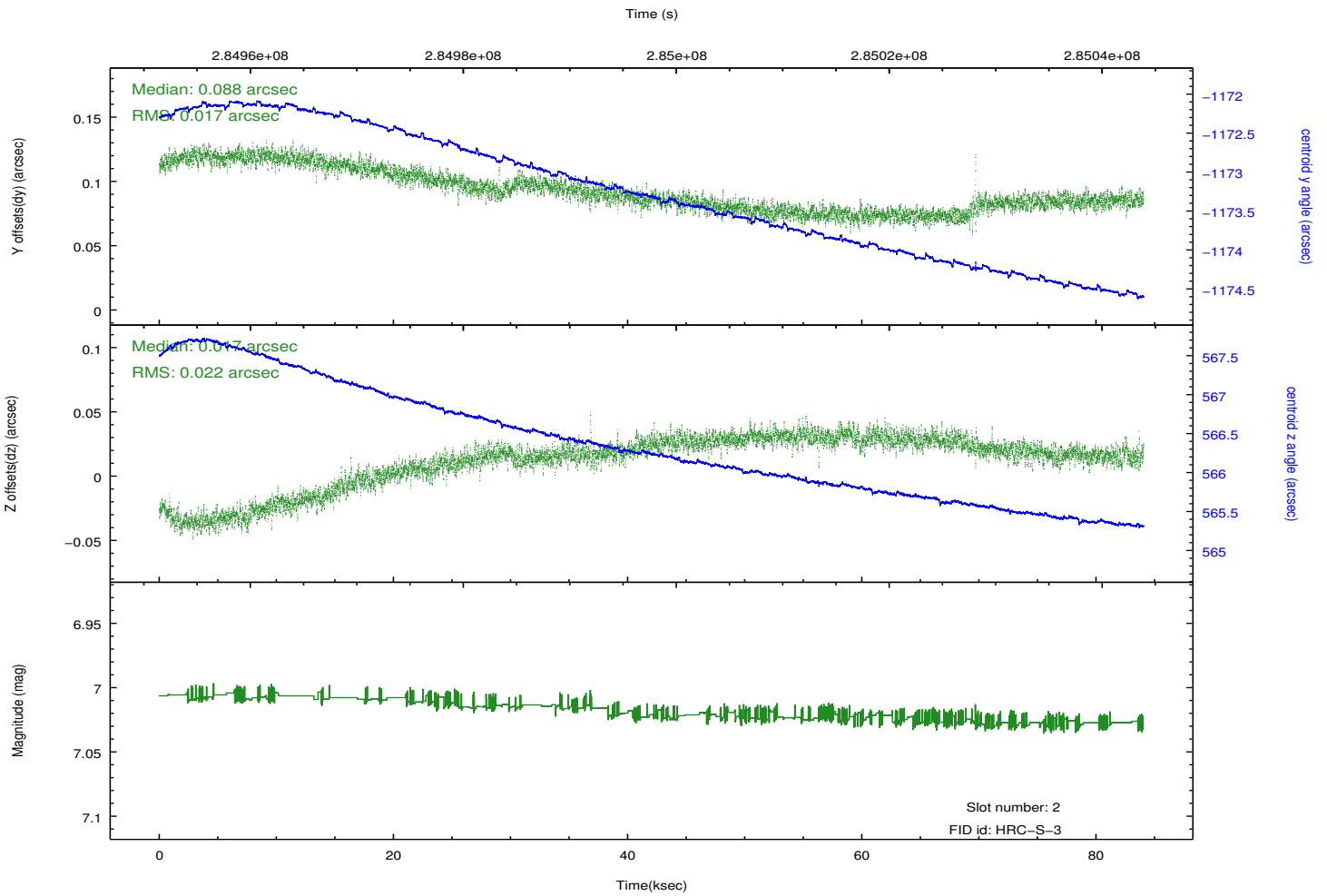
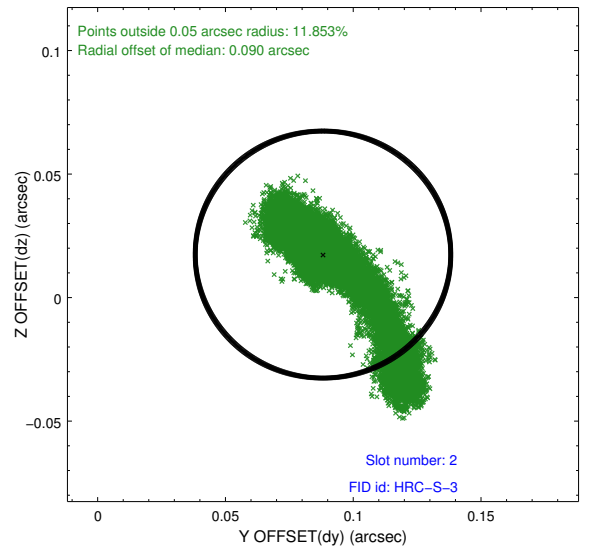
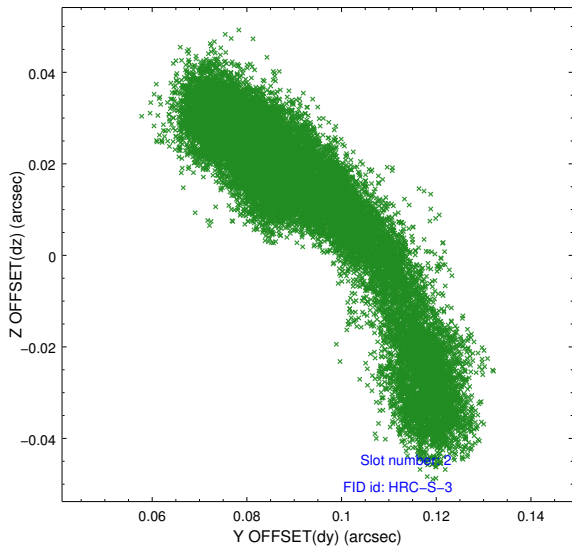
2.5.1 Slot 0



2.5.2 Slot 1



2.5.3 Slot 2



A Summary

A.1 Status

V&V Scientist	Beth Sundheim
V&V Date (YYYY-MM-DD)	2013.07.02
V&V Edition	1
V&V Disposition and Status	OK
V&V Charge Time	83.6207852

A.2 Comments