

V&V Reference Report

L2 ASCDS Version : 8.4.5

Observation 885 - L2 Version 3
Chandra X-Ray Center

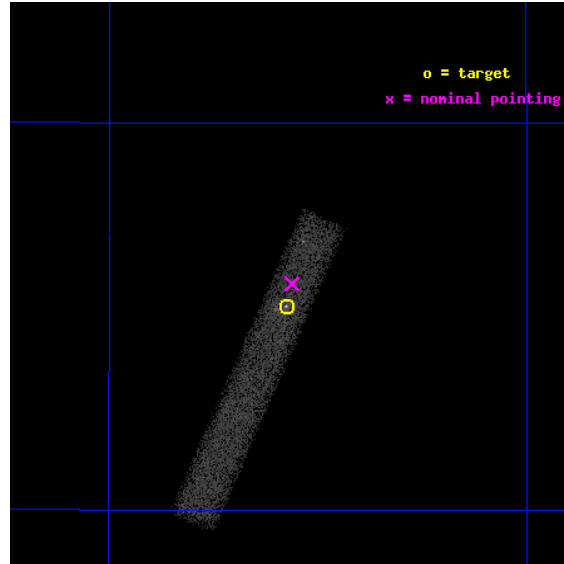
L2 Processing Date : Sep 1 2012

Contents

1	Front	2
2	OBI	3
2.1	OBI	3
2.1.1	Images	3
2.1.2	Bias	3
2.1.3	Parameters	4
2.1.4	Events	4
2.2	Compared Parameters	5
2.3	Aspect	6
2.4	Star Slots	9
2.4.1	Slot 3	9
2.4.2	Slot 4	10
2.4.3	Slot 5	11
2.4.4	Slot 6	12
2.4.5	Slot 7	13
2.5	FID Slots	14
2.5.1	Slot 0	14
2.5.2	Slot 1	15
2.5.3	Slot 2	16
A	Summary	17
A.1	Status	17
A.2	Comments	17

1 Front

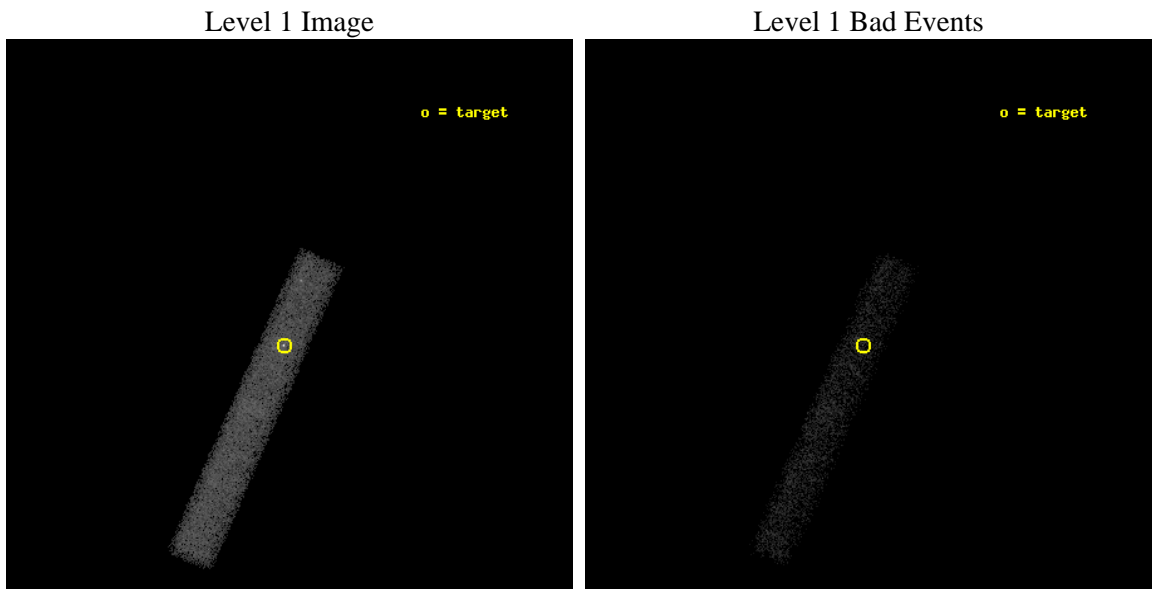
seq_num	700190	Sequence number
obs_id	885	Observation id
title	THE METAL ABUNDANCES IN LOW-REDSHIFT DAMPED LY-ALPHA GALAXIES	Prop
observer	Dr. David Turnshek	Principal investigator
object	0248+430	Source name
dtcycle	0	
cycle	P	events from which exps? Prim/Second/Both
ra_targ	42.89375	Observer's specified target RA [deg]
dec_targ	43.254389	Observer's specified target Dec [deg]
ra_nom	42.890601960619	Nominal RA [deg]
dec_nom	43.264032291398	Nominal Dec [deg]
roll_nom	113.83766100113	Nominal Roll [deg]
revision	3	Processing version of data
ontime	31262.00046584	Sum of GTIs [s]
livetime	28352.984278832	Livetime [s]
ontime7	31262.00046584	Sum of GTIs [s]
l2events	18202	Number of level 2 events



2 OBI

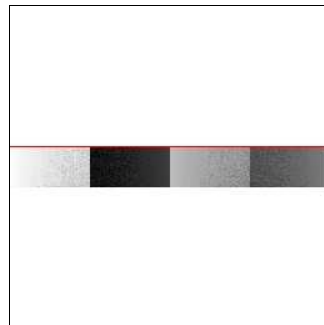
2.1 OBI

2.1.1 Images



2.1.2 Bias

Chip 7



2.1.3 Parameters

obi_num	0	Obi number	sched_exp_time	30595.622000	[s] Scheduled observation exposure time
ascdsver	8.4.5	Processing system revision	ontime	31262.00046584	Sum of GTIs [s]
caldbver	4.5.1.1	 	ontime7	31262.00046584	Sum of GTIs [s]
date	2012-09-01T04:12:49	Date and time of file creation	l1events	35746	Number of level 1 events
revision	3	Processing version of data			

2.1.4 Events

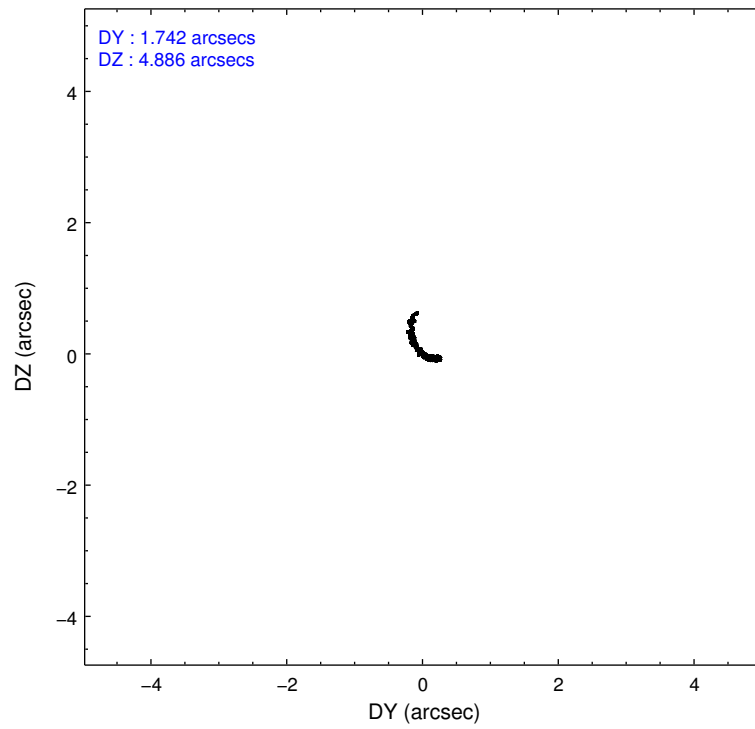
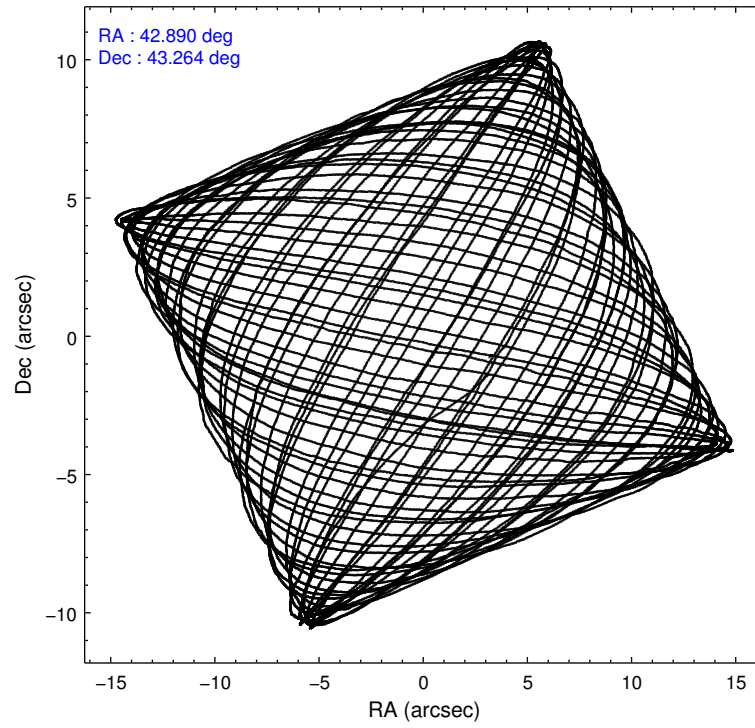
	ccd 7
level 1 events	35746
rejected events	16919
rejected %	47%

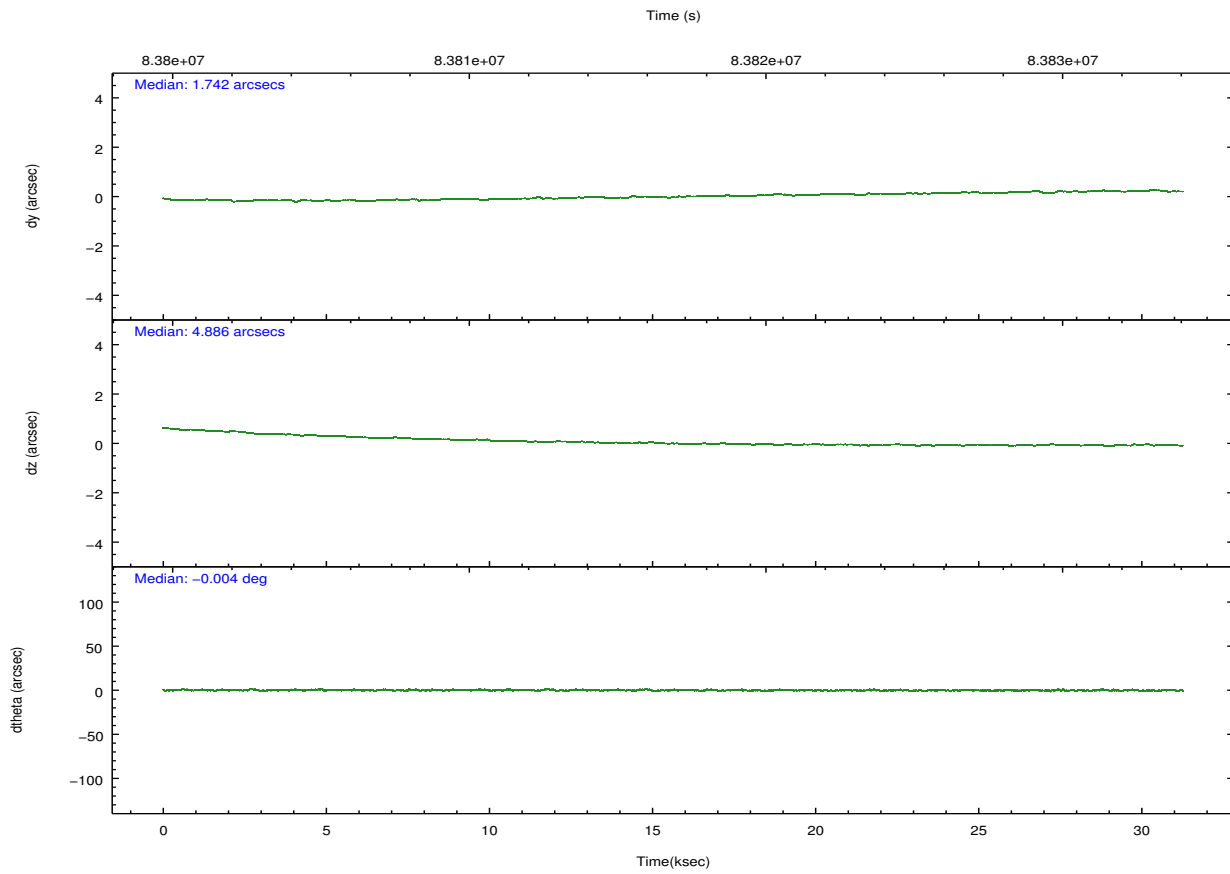
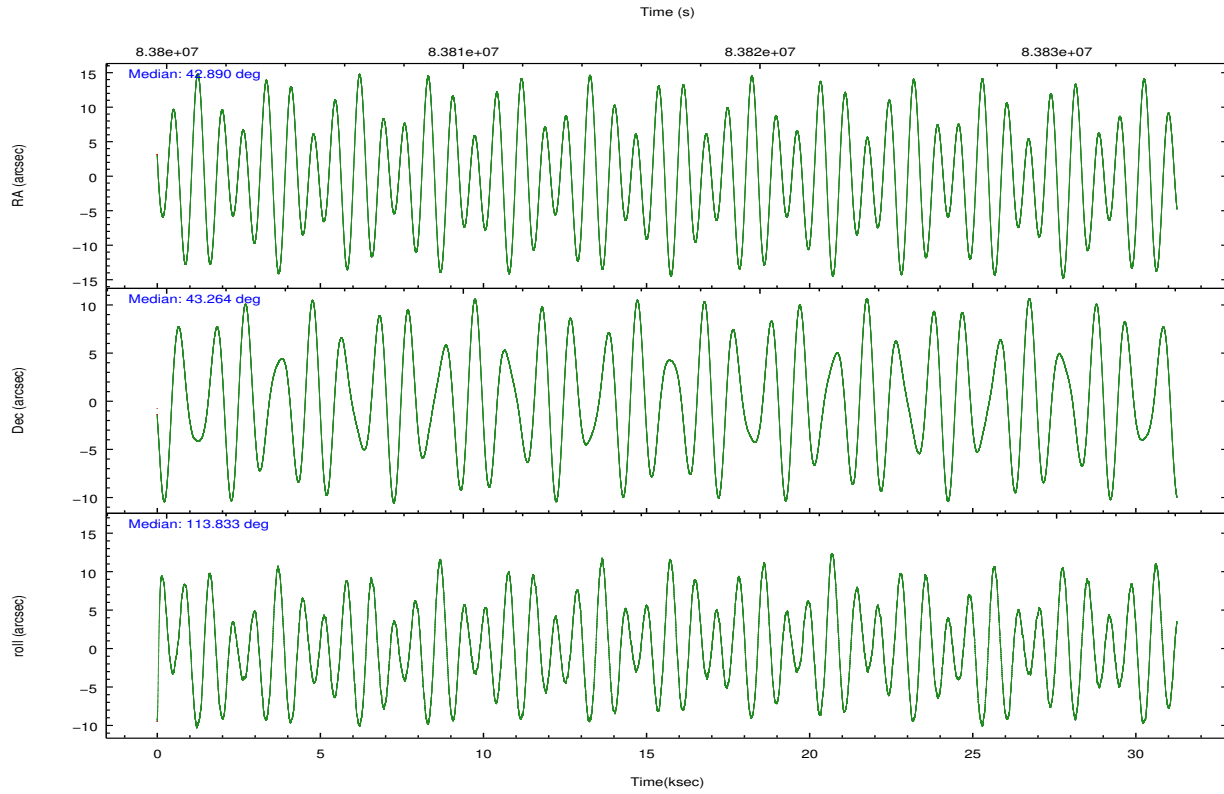
	ccd 7
grade 0 events	2579
	7%
grade 1 events	35
	0%
grade 2 events	3713
	10%
grade 3 events	2515
	7%
grade 4 events	2297
	6%
grade 5 events	2929
	8%
grade 6 events	7832
	21%
grade 7 events	13846
	38%

2.2 Compared Parameters

Parameter	Planned	Actual	Parameter	Planned	Actual
Instrument	ACIS	ACIS	Obspar format version number	7	7
Detector	ACIS-7	ACIS-7	Obspar file type	PREDICTED	ACTUAL
Grating	NONE	NONE	Obspar update status	NONE	UPDATED
Data mode	VFAINT	VFAINT	Number of optional ACIS chips dropped	0	0
Observation mode	POINTING	POINTING	On-chip summing requested	N	N
[deg] Pointing RA	42.921080	42.89060196061899	Subarray requested	CUSTOM	1/8
[deg] Pointing Dec	43.248014	43.26403229139833	Subarray start row	447	447
[deg] Pointing Roll	113.660155	113.8376610011256	Subarray row count	128	128
[mm] SIM focus pos	-0.684267	-0.6828225247311905	Alternating exposures requested	N	N
[mm] SIM defocus	0	0.001444936568705701	[s] Primary exposure time	0.000000	0.4
[mm] SIM translation stage pos	-190.132523	-190.1425803651734			
[mm] SIM translation stage offset	0	0.01005778216563158			
[s] Observation start time (MET)	83801905.184000	83800710.050845			
Observation start date	2000-08-27T22:17:21	2000-08-27T21:58:30			
[s] Observation end time (MET)	83832500.184000	83832814.58955			
Observation end date	2000-08-28T06:47:16	2000-08-28T06:53:34			
Read mode	TIMED	TIMED			

2.3 Aspect



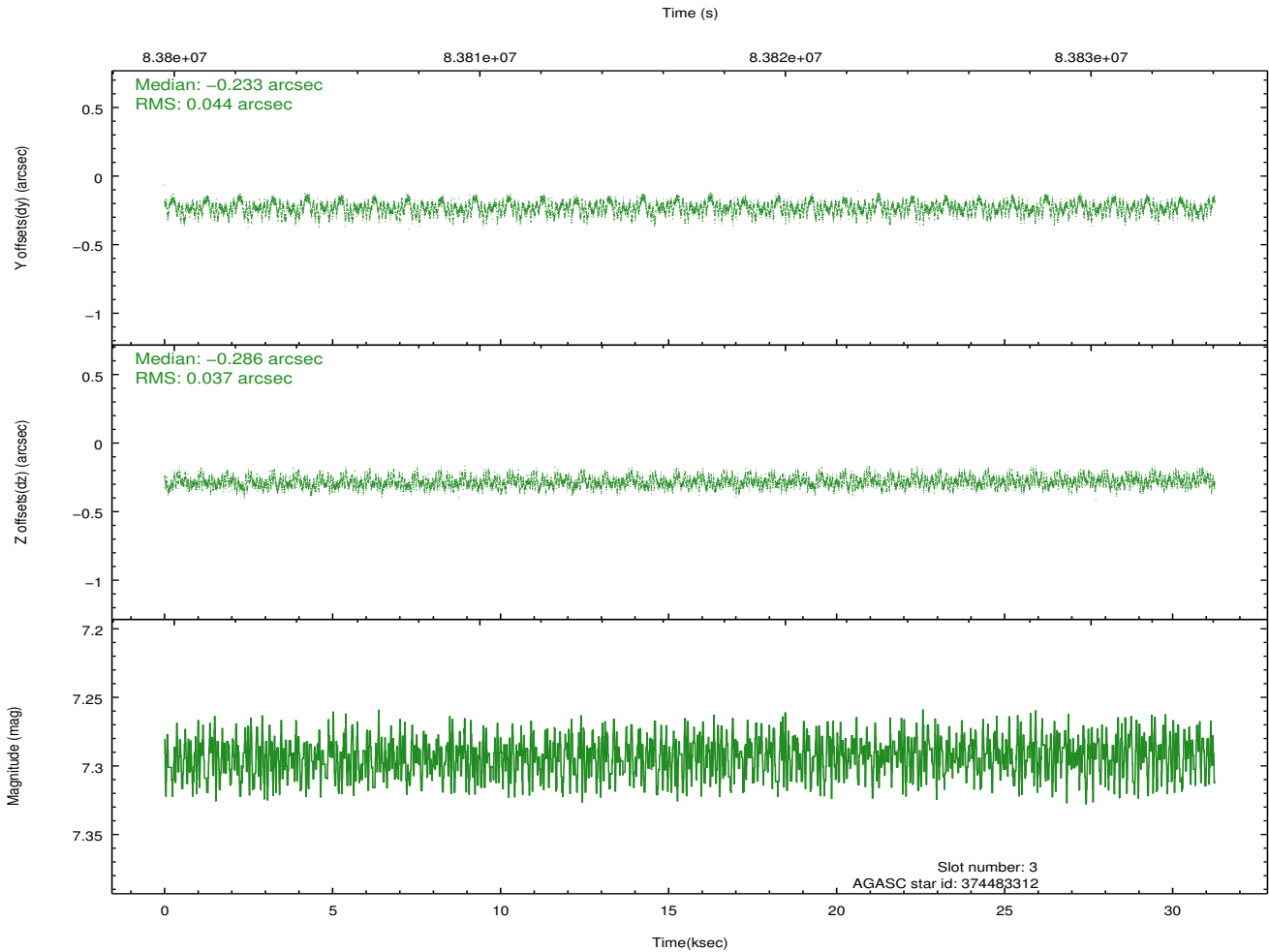
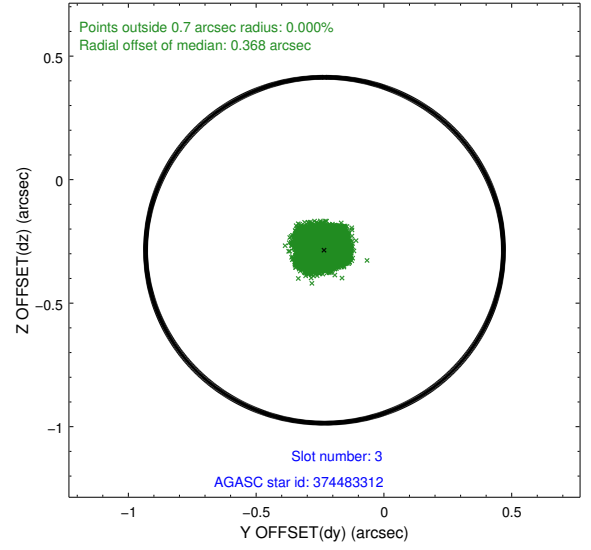
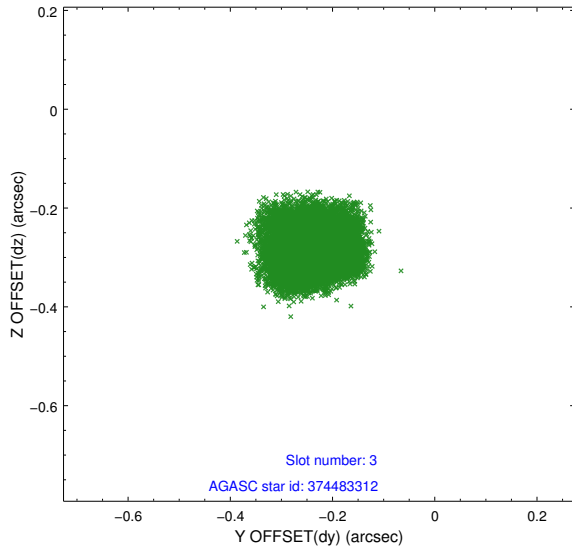


Slot Statistics

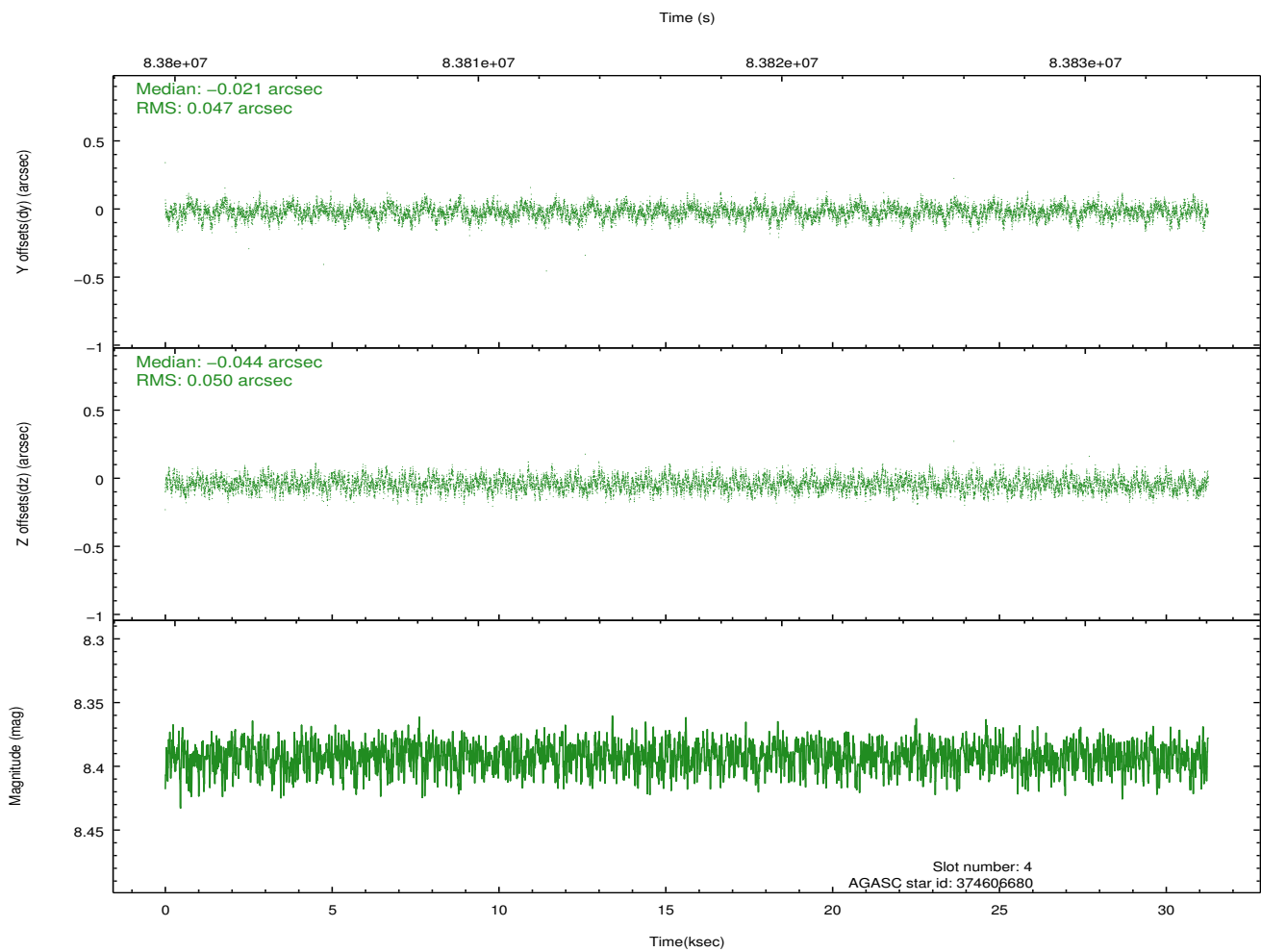
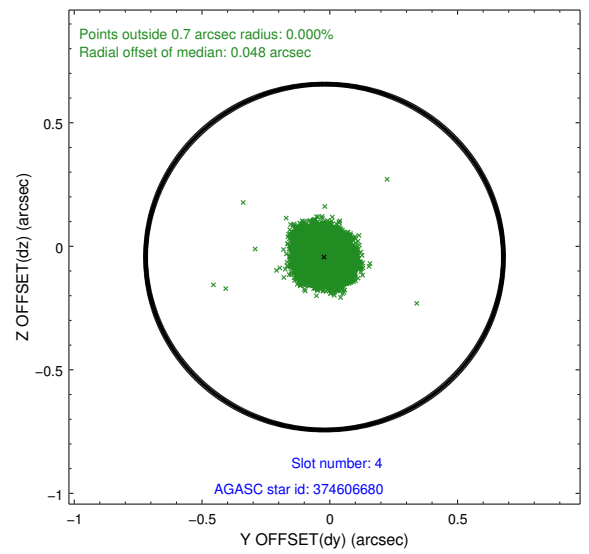
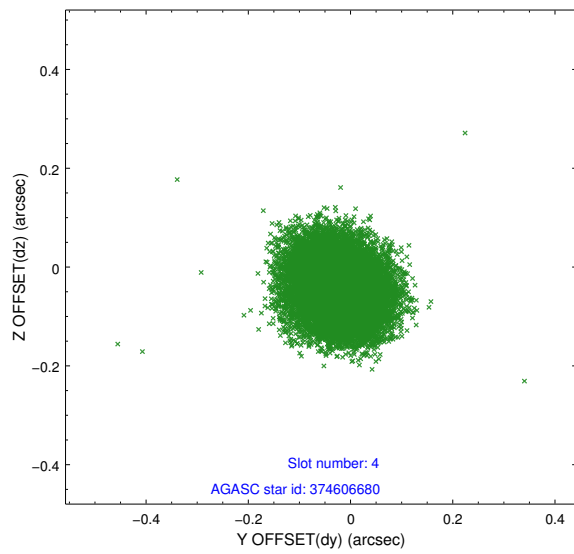
slot	status	id	mag	n_pts	med_dy	med_dz	dr1	dr2	ra	dec	mean_y	mean_z
0	FID	ACIS-S-2	7.11	7626	-0.017	-0.019	0.007	0.012	0.000000	0.000000	-754.37	-1726.05
1	FID	ACIS-S-4	7.21	7626	-0.002	0.002	0.007	0.011	0.000000	0.000000	2158.89	182.40
2	FID	ACIS-S-6	7.36	7626	-0.008	0.024	0.008	0.013	0.000000	0.000000	407.69	819.88
3	GUIDE	374483312	7.29	15250	-0.233	-0.286	0.062	0.097	41.844043	43.402031	1653.75	2350.18
4	GUIDE	374606680	8.39	15249	-0.021	-0.044	0.074	0.118	42.653126	43.314689	501.73	546.10
5	GUIDE	374614848	8.78	15249	-0.143	0.261	0.060	0.100	43.298819	43.828826	1522.73	-1738.33
6	GUIDE	374082544	9.55	15249	0.212	-0.090	0.104	0.167	42.604913	42.485254	-2177.58	1869.68
7	GUIDE	374082120	9.45	15241	0.183	0.154	0.072	0.119	43.873275	42.894393	-2161.52	-1795.19

2.4 Star Slots

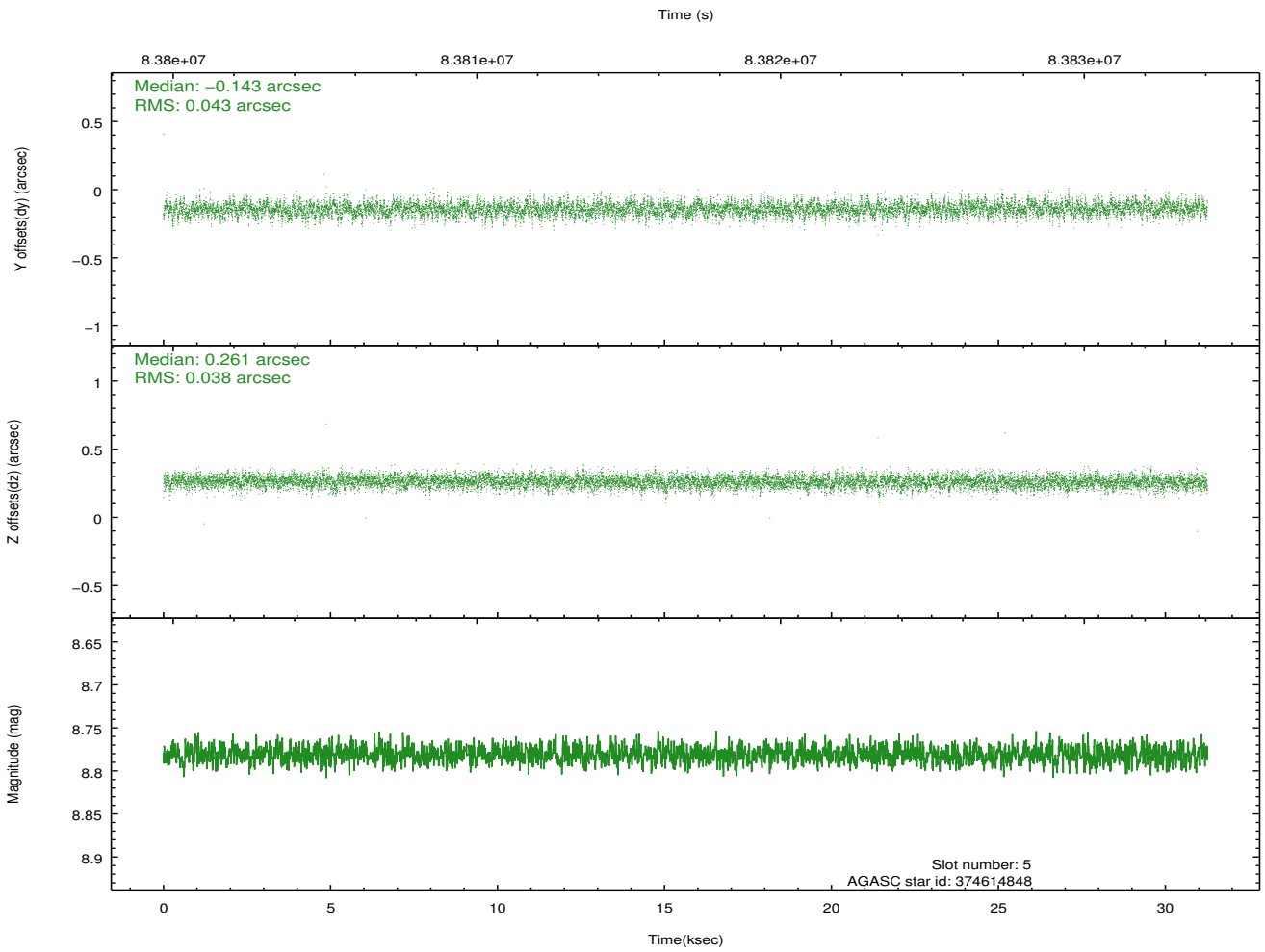
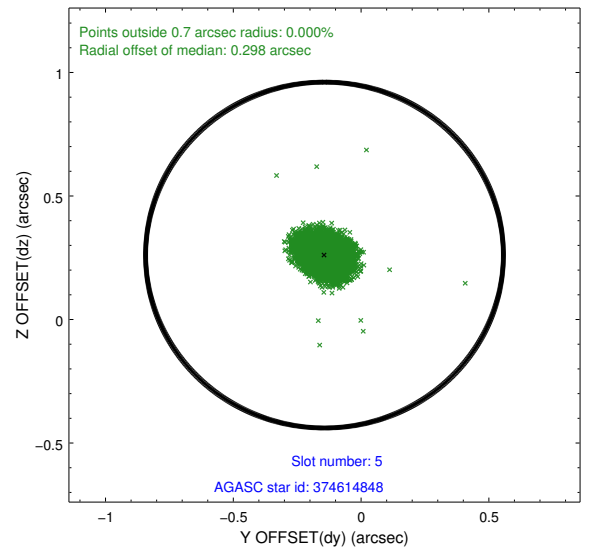
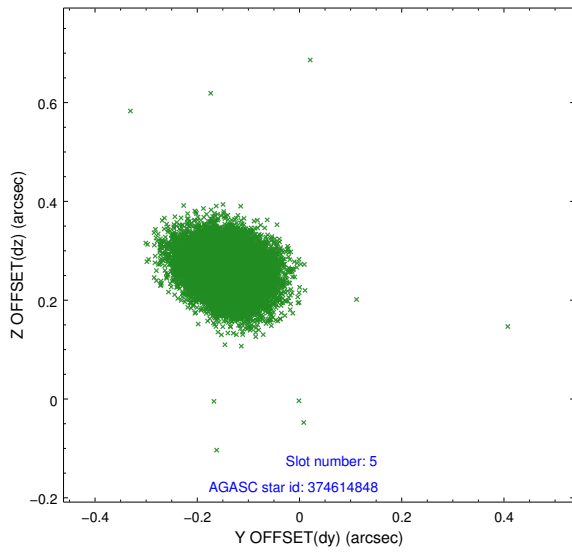
2.4.1 Slot 3



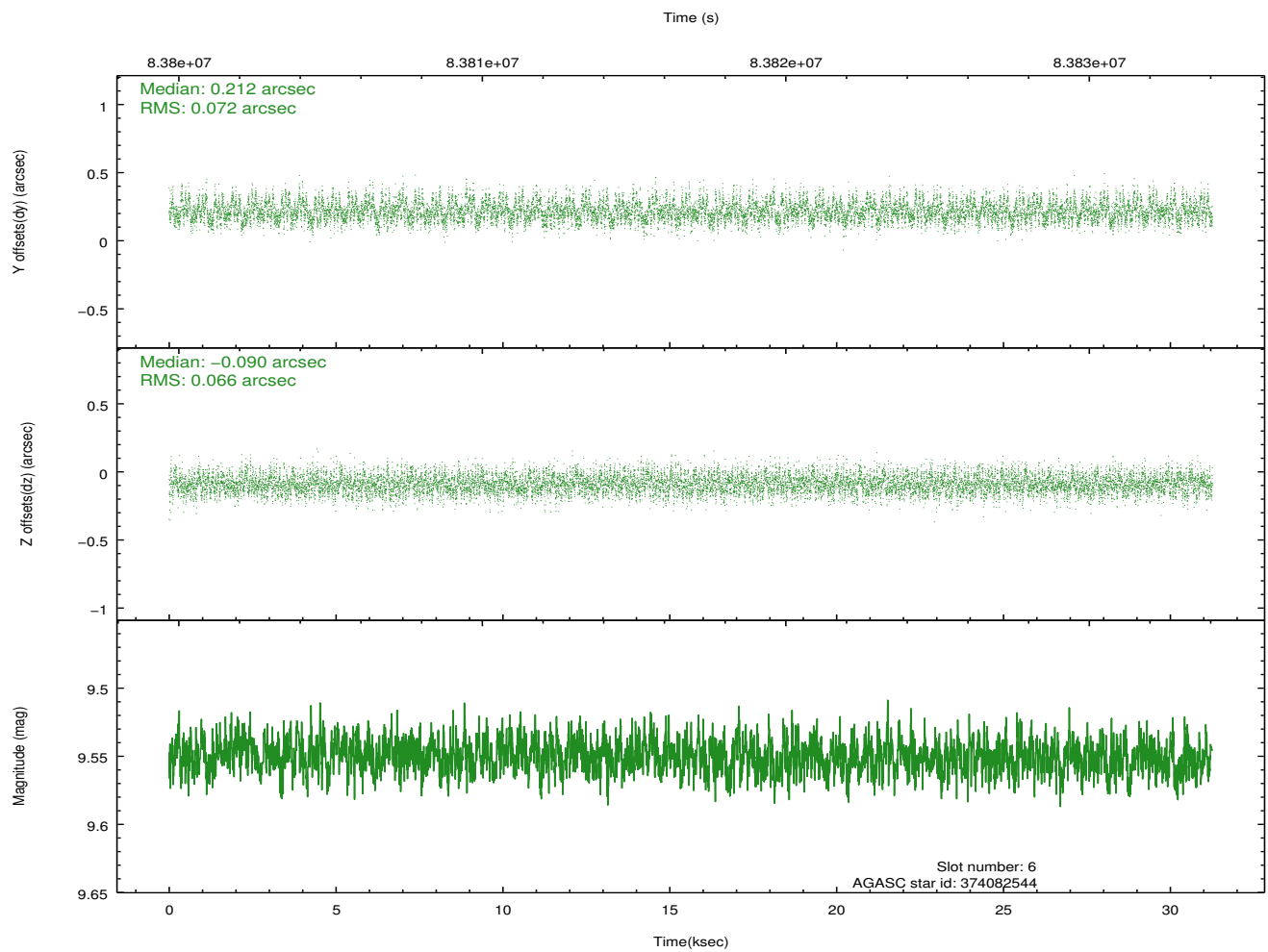
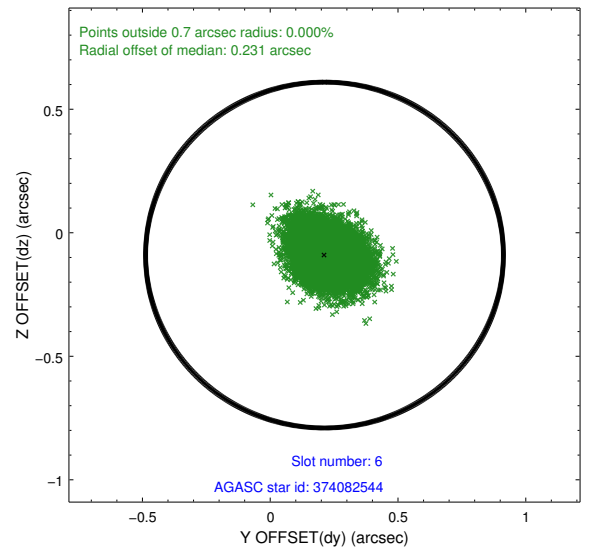
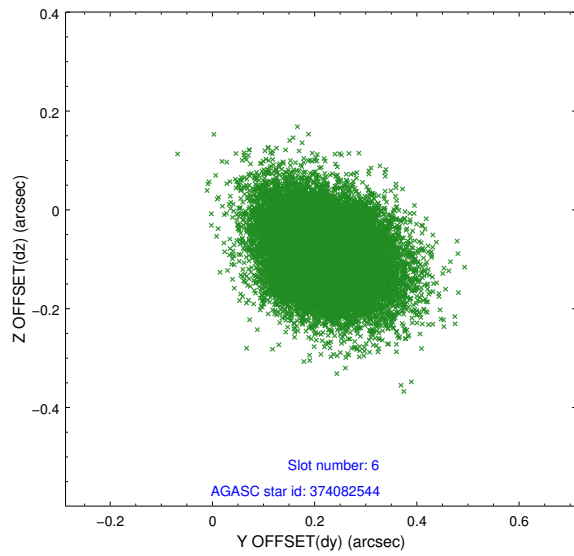
2.4.2 Slot 4



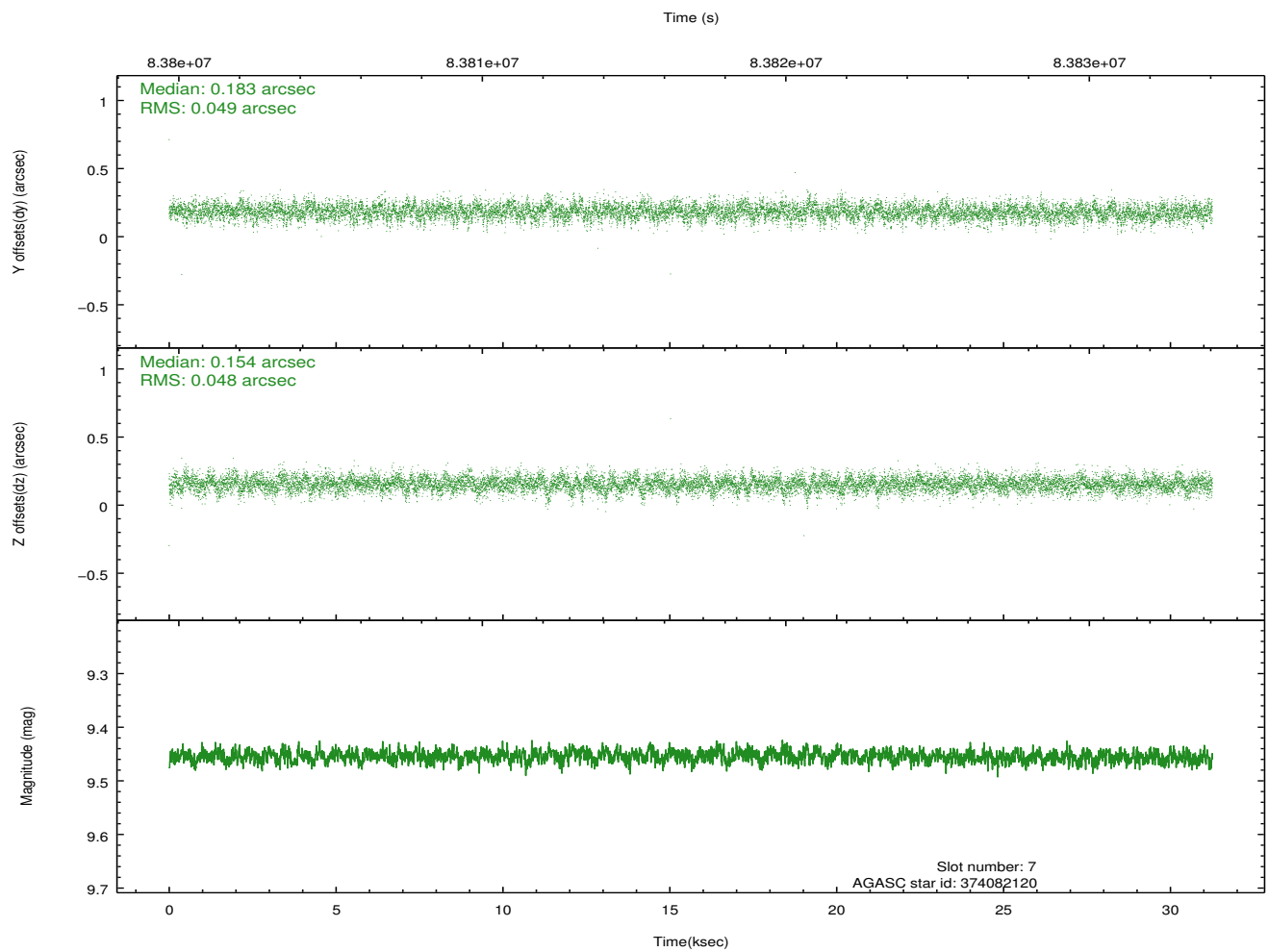
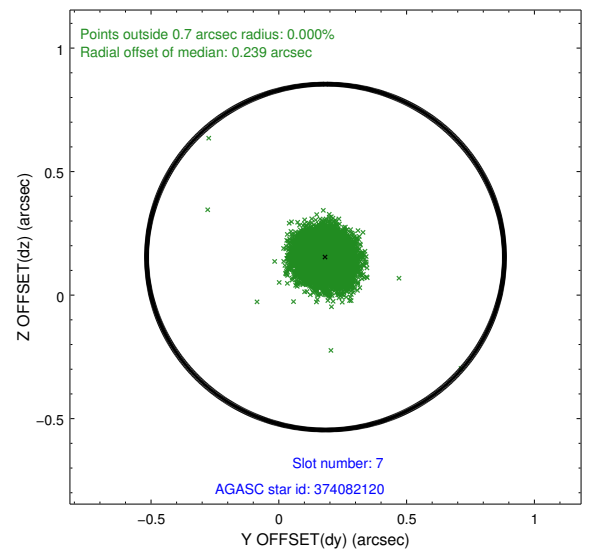
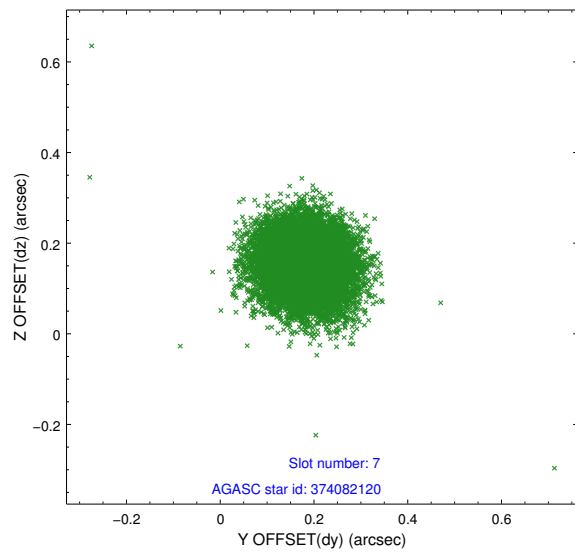
2.4.3 Slot 5



2.4.4 Slot 6

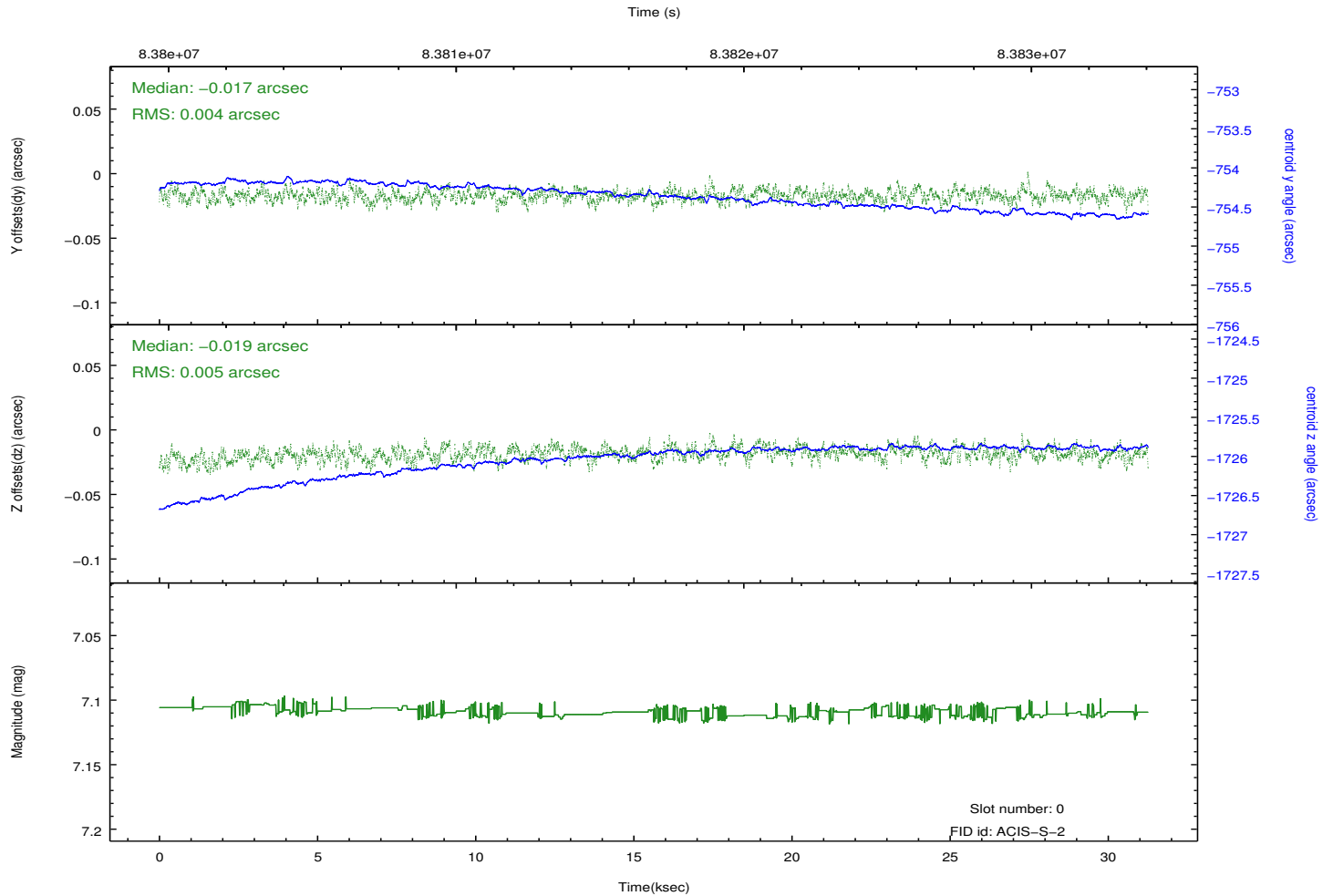
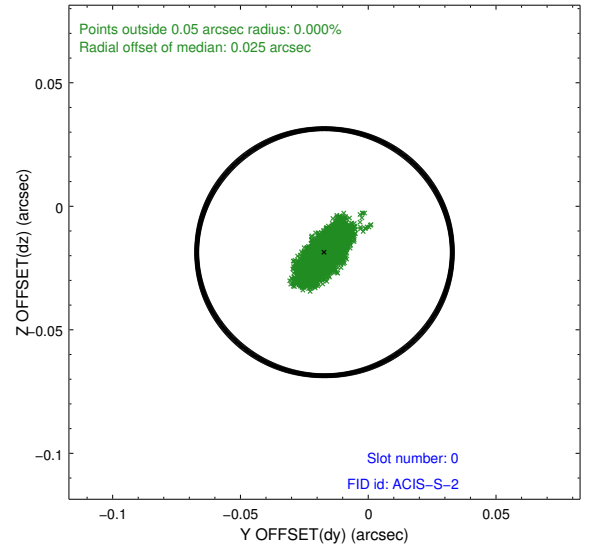
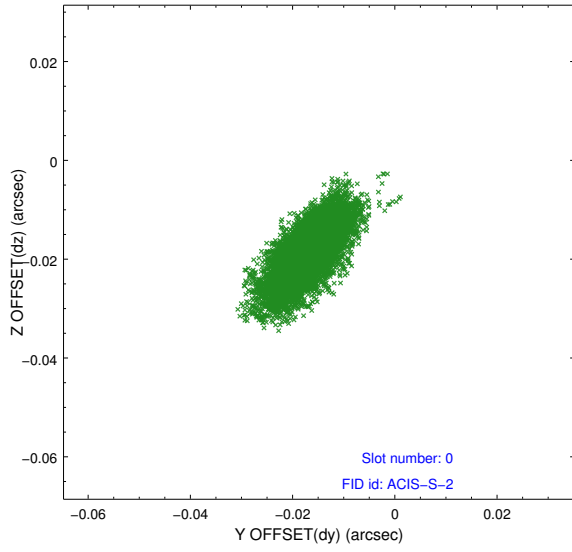


2.4.5 Slot 7

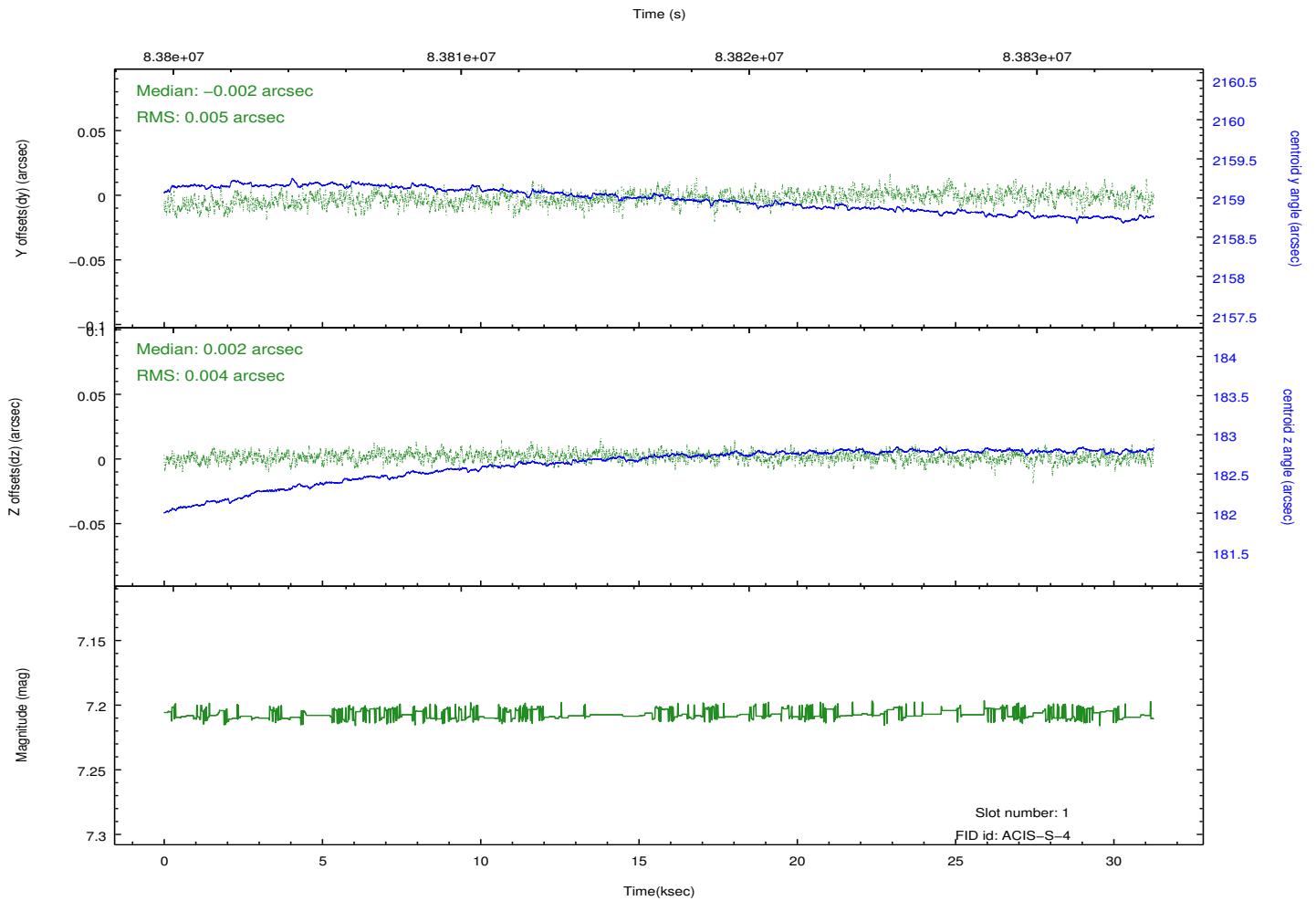
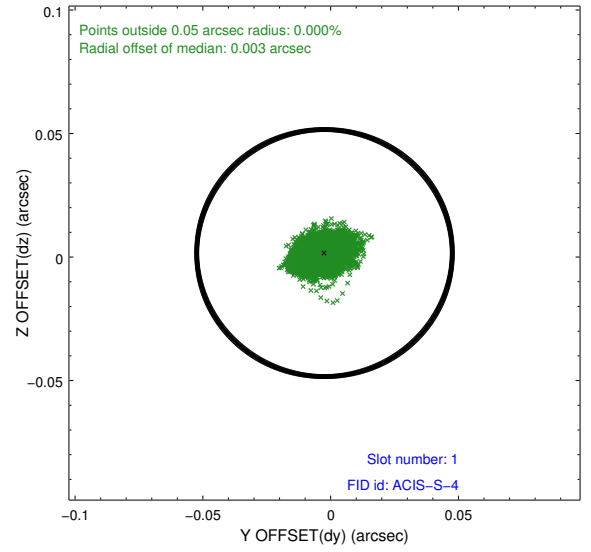
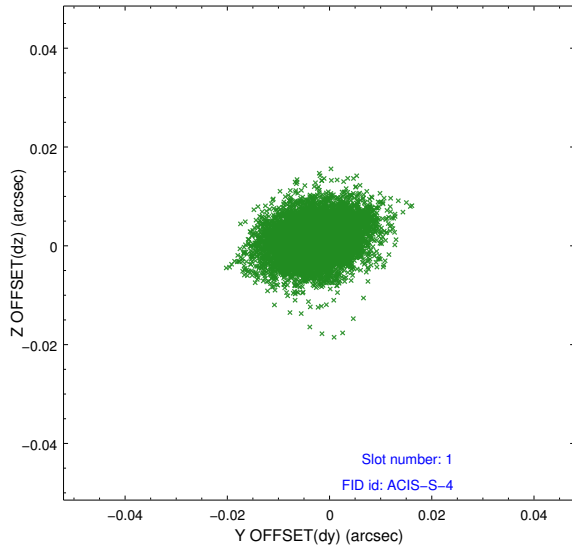


2.5 FID Slots

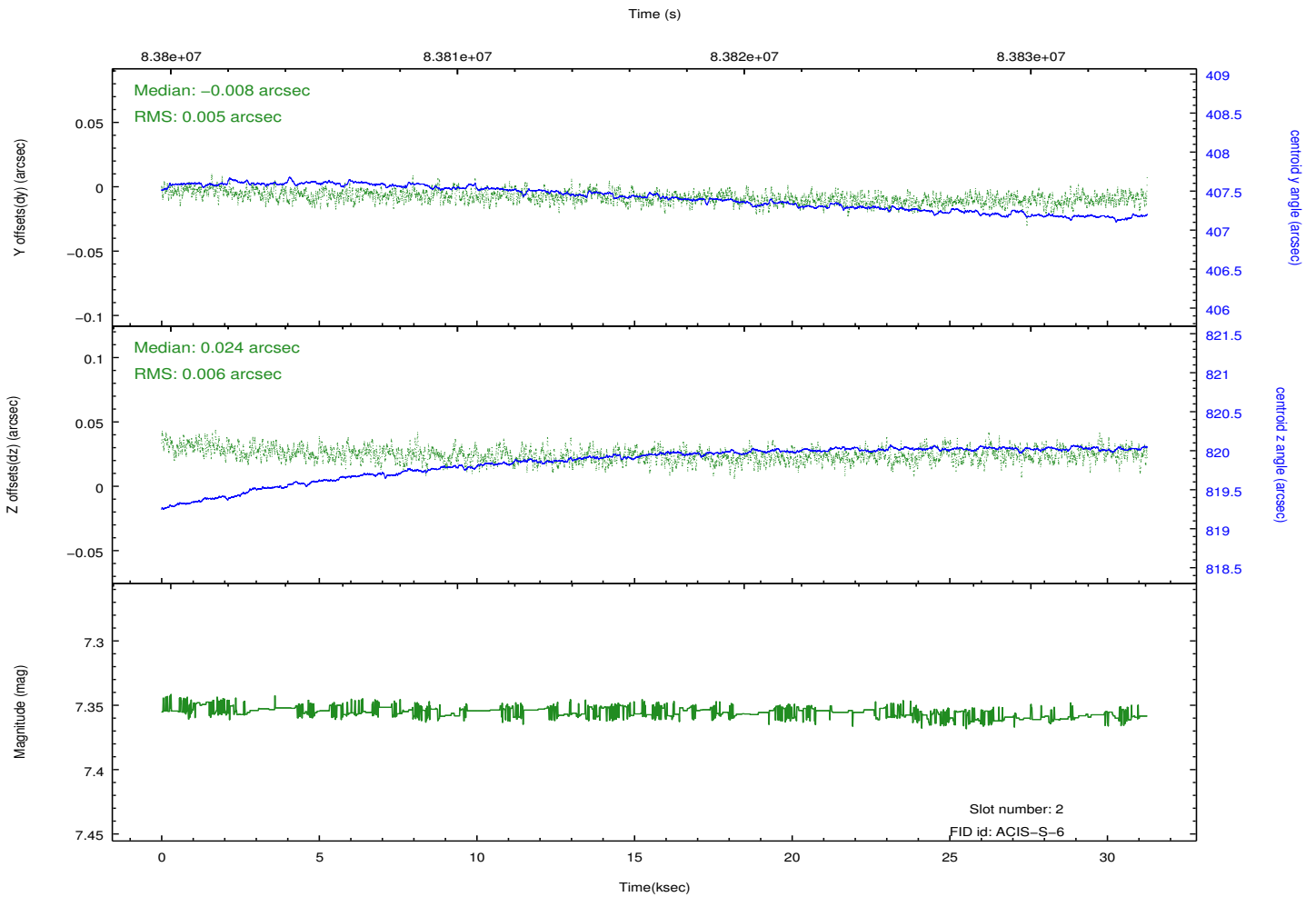
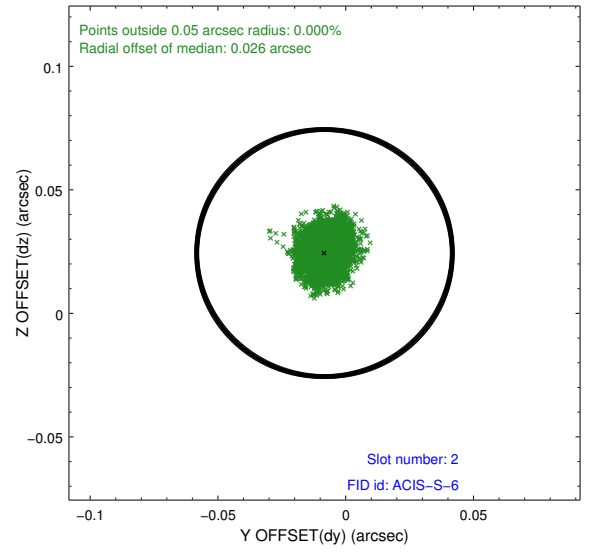
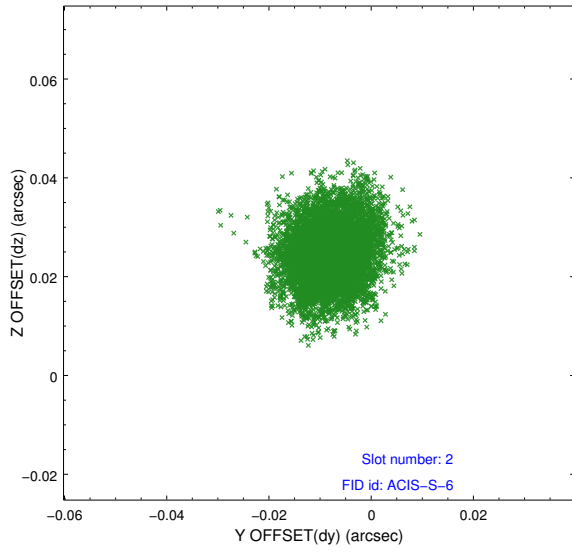
2.5.1 Slot 0



2.5.2 Slot 1



2.5.3 Slot 2



A Summary

A.1 Status

V&V Scientist	Beth Sundheim
V&V Date (YYYY-MM-DD)	2012.09.06
V&V Edition	1
V&V Disposition and Status	OK
V&V Charge Time	31.262

A.2 Comments