

V&V Reference Report

L2 ASCDS Version : 8.4.4

Observation 8915 - L2 Version 2
Chandra X-Ray Center

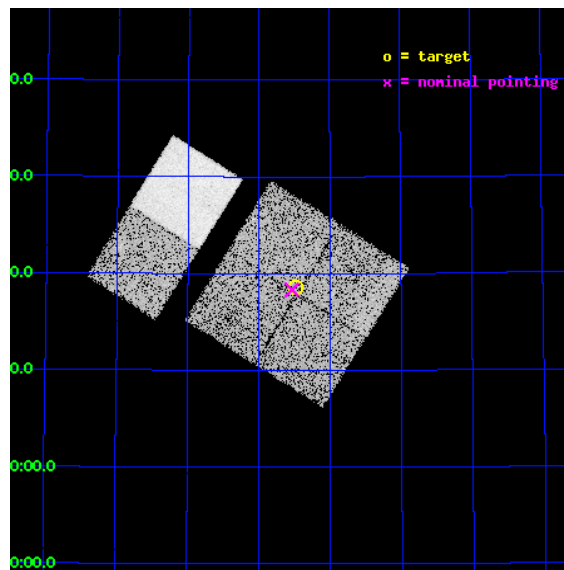
L2 Processing Date : May 25 2012

Contents

1	Front	2
2	OBI	3
2.1	OBI	3
2.1.1	Images	3
2.1.2	Bias	3
2.1.3	Parameters	4
2.1.4	Events	4
2.2	Compared Parameters	5
2.3	Aspect	6
2.4	Star Slots	9
2.4.1	Slot 3	9
2.4.2	Slot 4	10
2.4.3	Slot 5	11
2.4.4	Slot 6	12
2.4.5	Slot 7	13
2.5	FID Slots	14
2.5.1	Slot 0	14
2.5.2	Slot 1	15
2.5.3	Slot 2	16
A	Summary	17
A.1	Status	17
A.2	Comments	17

1 Front

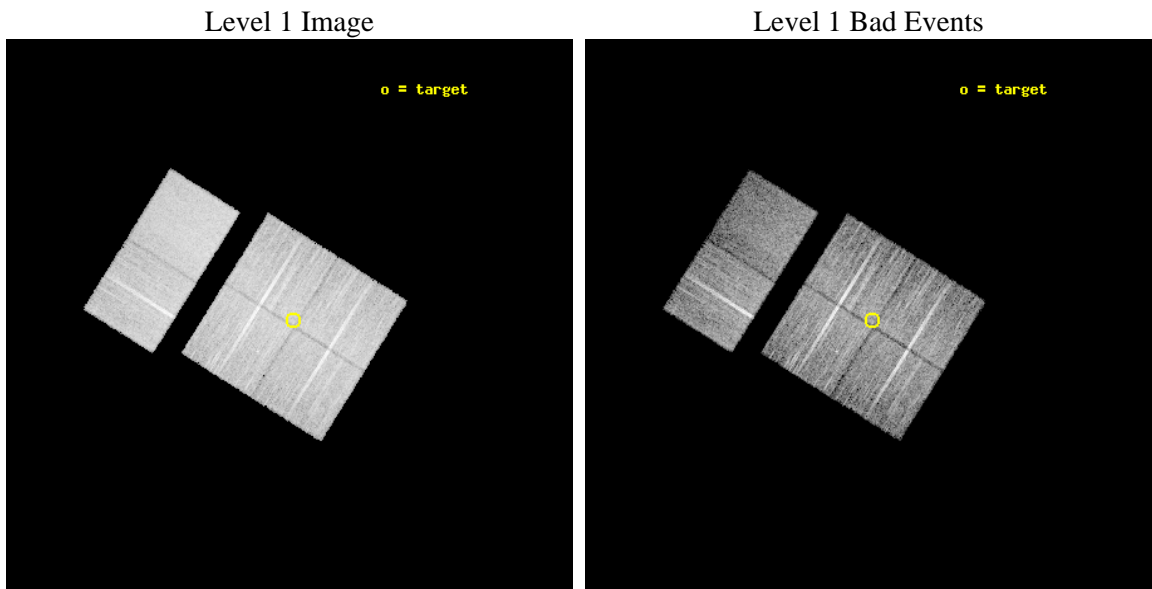
seq_num	200496	Sequence number
obs_id	8915	Observation id
title	Survey of Class 0 Protostars in the Smallest Clouds 'Bok Globules	
observer	Prof. Yohko Tsuboi	Principal investigator
object	GF9-2	Source name
dtcycle	0	
cycle	P	events from which exps? Prim/Second/Both
ra_targ	312.871213	Observer's specified target RA [deg]
dec_targ	60.310816	Observer's specified target Dec [deg]
ra_nom	312.88369743016	Nominal RA [deg]
dec_nom	60.305530084061	Nominal Dec [deg]
roll_nom	302.05975085118	Nominal Roll [deg]
revision	2	Processing version of data
ontime	10038.358922422	Sum of GTIs [s]
livetime	9911.2471773722	Livetime [s]
ontime0	10041.599962652	Sum of GTIs [s]
ontime1	10038.358942449	Sum of GTIs [s]
ontime2	10041.599962652	Sum of GTIs [s]
ontime3	10038.358922422	Sum of GTIs [s]
ontime6	10041.599962652	Sum of GTIs [s]
ontime7	10041.599962652	Sum of GTIs [s]
l2events	77219	Number of level 2 events



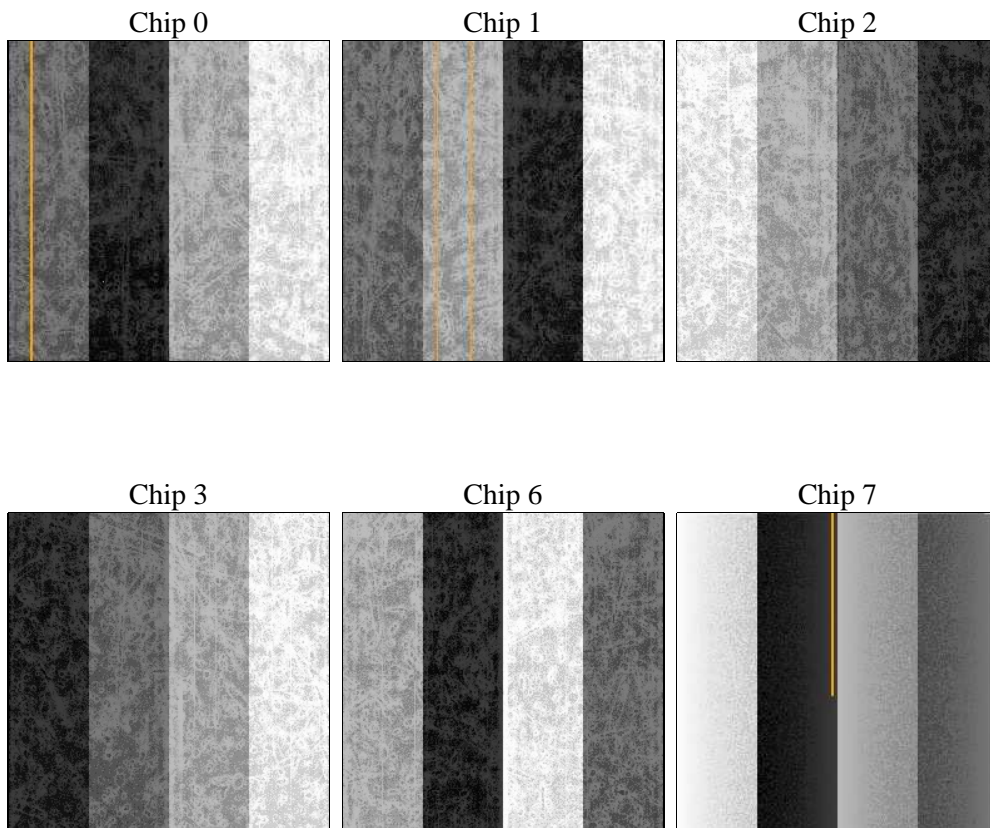
2 OBI

2.1 OBI

2.1.1 Images



2.1.2 Bias



2.1.3 Parameters

obi_num	0	Obi number	sched_exp_time	10001.031000	[s] Scheduled observation exposure time
ascdsver	8.4.4	Processing system revision	ontime	10038.358922422	Sum of GTIs [s]
caldbver	4.4.9	 	ontime0	10041.599962652	Sum of GTIs [s]
date	2012-05-25T18:04:18	Date and time of file creation	ontime1	10038.358942449	Sum of GTIs [s]
revision	2	Processing version of data	ontime2	10041.599962652	Sum of GTIs [s]
			ontime3	10038.358922422	Sum of GTIs [s]
			ontime6	10041.599962652	Sum of GTIs [s]
			ontime7	10041.599962652	Sum of GTIs [s]
			l1events	505429	Number of level 1 events

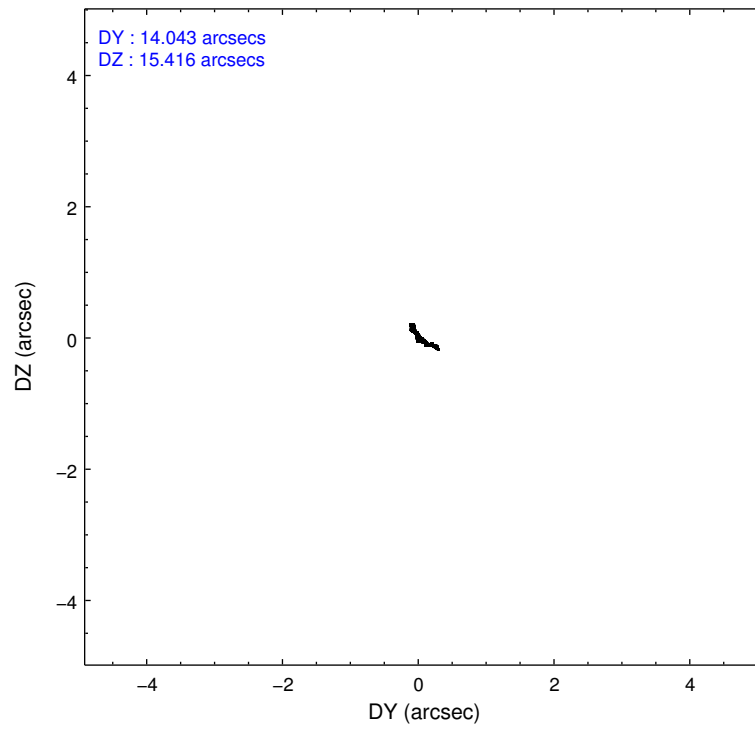
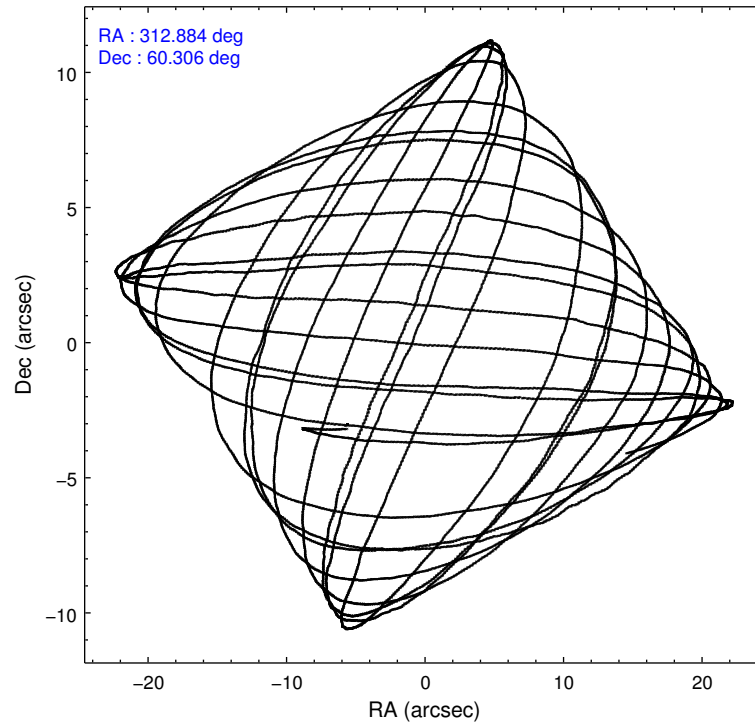
2.1.4 Events

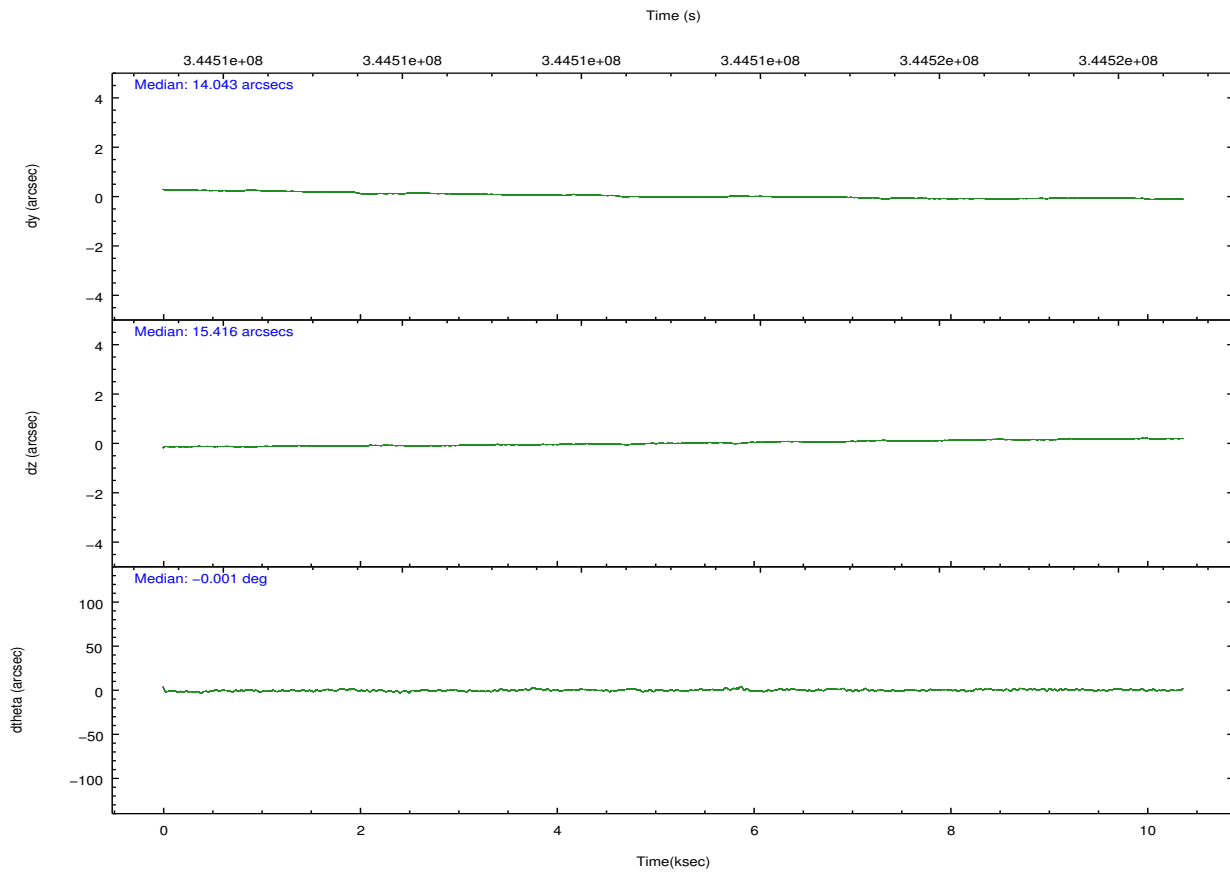
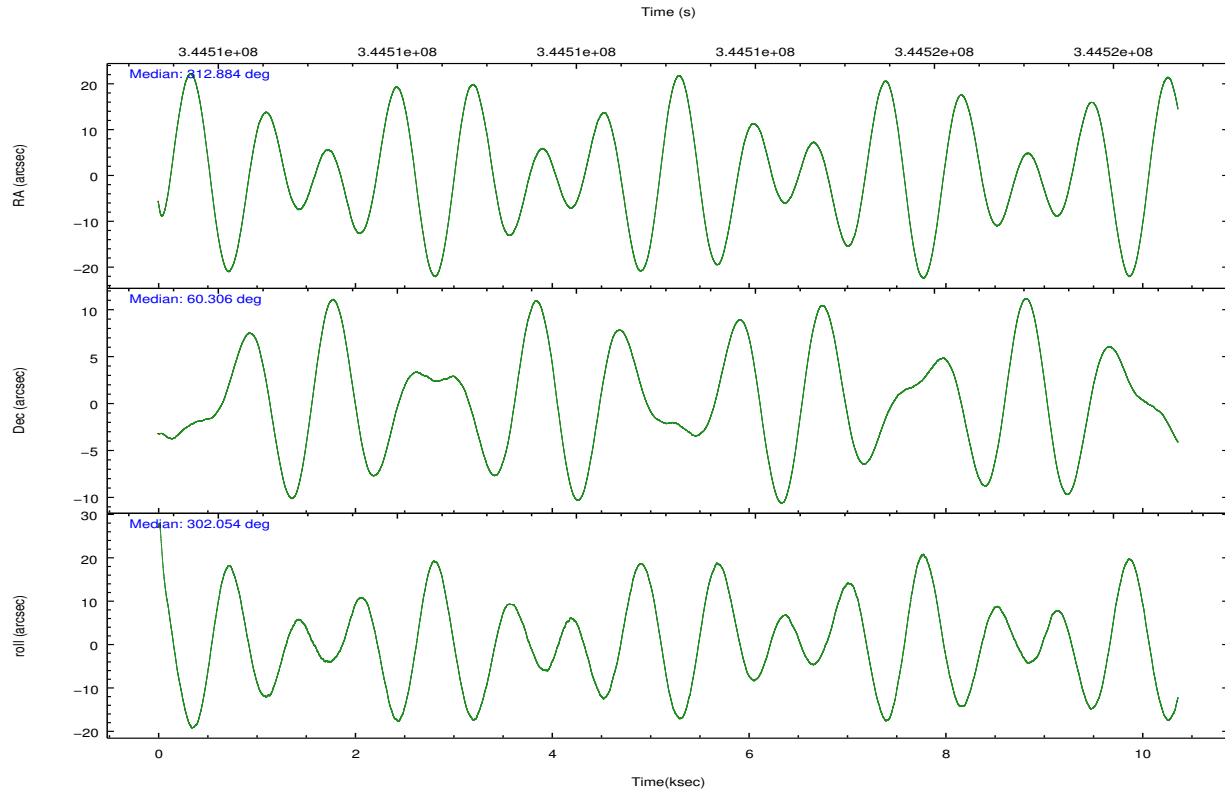
	ccd 0	ccd 1	ccd 2	ccd 3	ccd 6	ccd 7		ccd 0	ccd 1	ccd 2	ccd 3	ccd 6	ccd 7
level 1 events	74128	81747	85960	83810	84663	95121	grade 0 events	2874	3346	2935	2831	3113	3912
rejected events	65850	72231	77813	75778	75746	52425		3%	4%	3%	3%	3%	4%
rejected %	88%	88%	90%	90%	89%	55%	grade 1 events	48	40	33	50	44	119
								0%	0%	0%	0%	0%	0%
							grade 2 events	2022	2296	1939	1841	1932	8687
								2%	2%	2%	2%	2%	9%
							grade 3 events	923	985	823	885	924	3822
								1%	1%	0%	1%	1%	4%
							grade 4 events	862	972	889	866	976	3769
								1%	1%	1%	1%	1%	3%
							grade 5 events	2948	3190	2855	3462	3550	9899
								3%	3%	3%	4%	4%	10%
							grade 6 events	1602	1923	1567	1615	1973	22532
								2%	2%	1%	1%	2%	23%
							grade 7 events	62849	68995	74919	72260	72151	42381
								84%	84%	87%	86%	85%	44%

2.2 Compared Parameters

Parameter	Planned	Actual	Parameter	Planned	Actual
Instrument	ACIS	ACIS	Obspar format version number	7	7
Detector	ACIS-012367	ACIS-012367	Obspar file type	PREDICTED	ACTUAL
Grating	NONE	NONE	Obspar update status	NONE	UPDATED
Data mode	VFAINT	VFAINT	CCD I0 on	Y	Y
Observation mode	POINTING	POINTING	CCD I1 on	Y	Y
[deg] Pointing RA	312.834434	312.8836974301582	CCD I2 on	Y	Y
[deg] Pointing Dec	60.318331	60.30553008406088	CCD I3 on	Y	Y
[deg] Pointing Roll	301.893841	302.0597508511763	CCD S0 on	N	N
[mm] SIM focus pos	-0.782348	-0.7809083437167272	CCD S1 on	N	N
[mm] SIM defocus	0	0.001439871863259334	CCD S2 on	O2	Y
[mm] SIM translation stage pos	-233.592463	-233.5874344608287	CCD S3 on	O1	Y
[mm] SIM translation stage offset	0	-0.005018542100998502	CCD S4 on	N	N
[s] Observation start time (MET)	344508197.184000	344507049.79175	CCD S5 on	N	N
Observation start date	2008-12-01T08:42:12	2008-12-01T08:24:09	Number of optional ACIS chips dropped	0	0
[s] Observation end time (MET)	344518198.184000	344518430.36731	On-chip summing requested	N	N
Observation end date	2008-12-01T11:28:53	2008-12-01T11:33:50	Subarray requested	NONE	NONE
Read mode	TIMED	TIMED	Alternating exposures requested	N	N
			[s] Primary exposure time	0.000000	3.2

2.3 Aspect



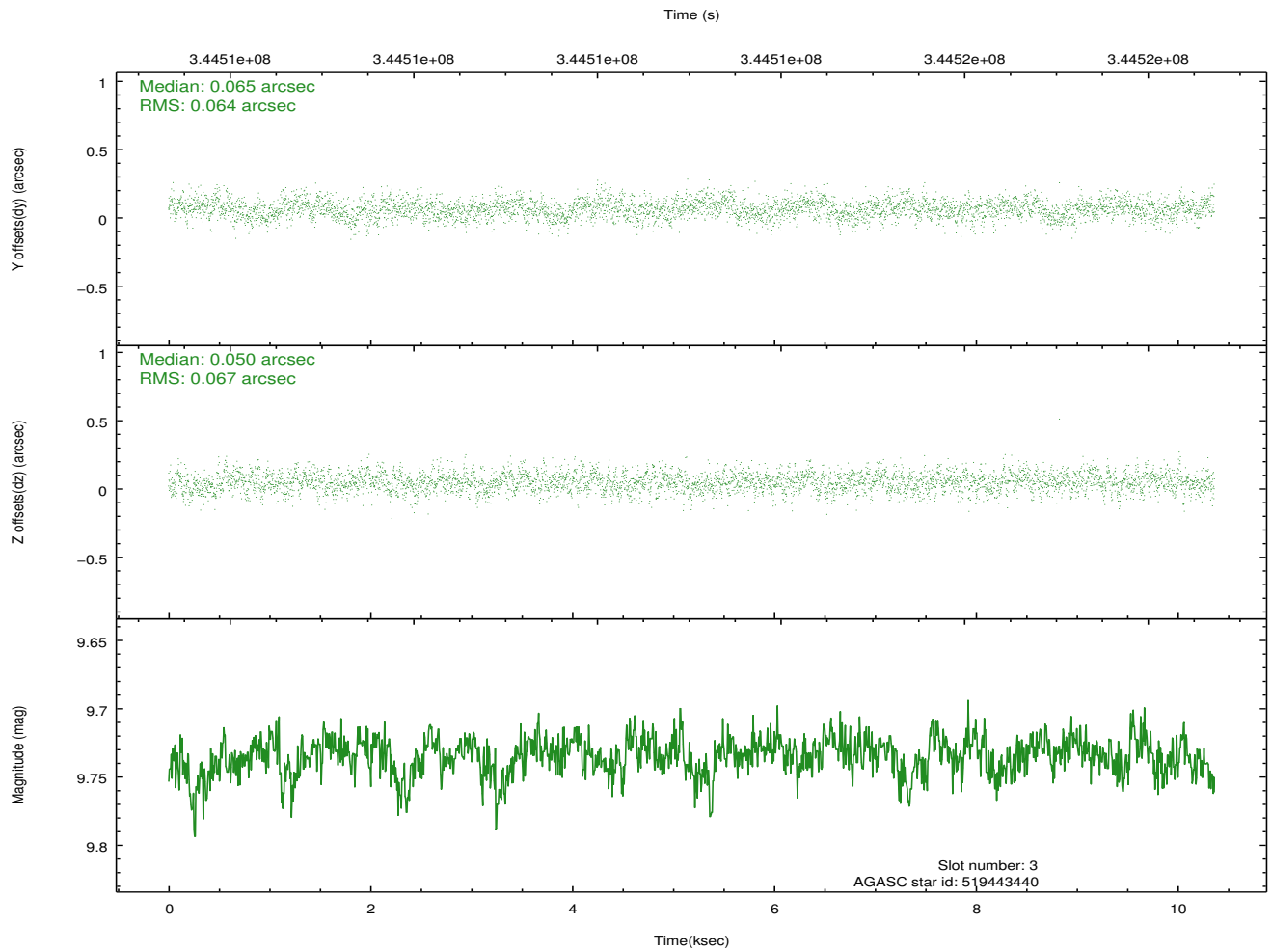
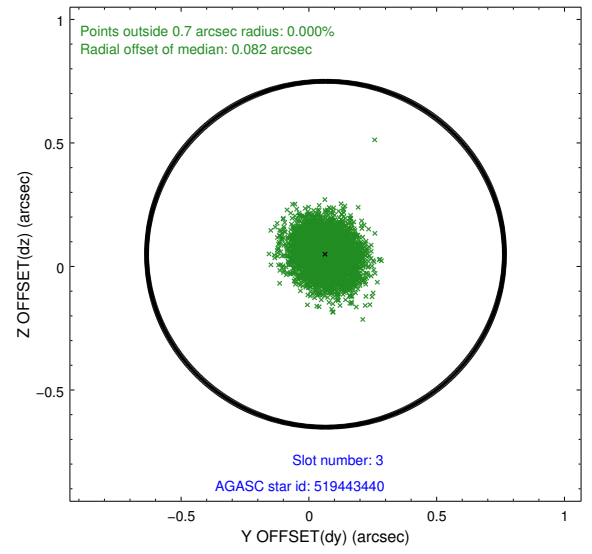
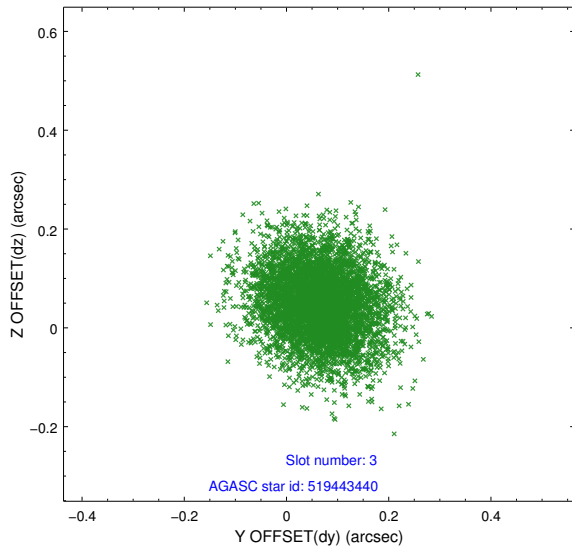


Slot Statistics

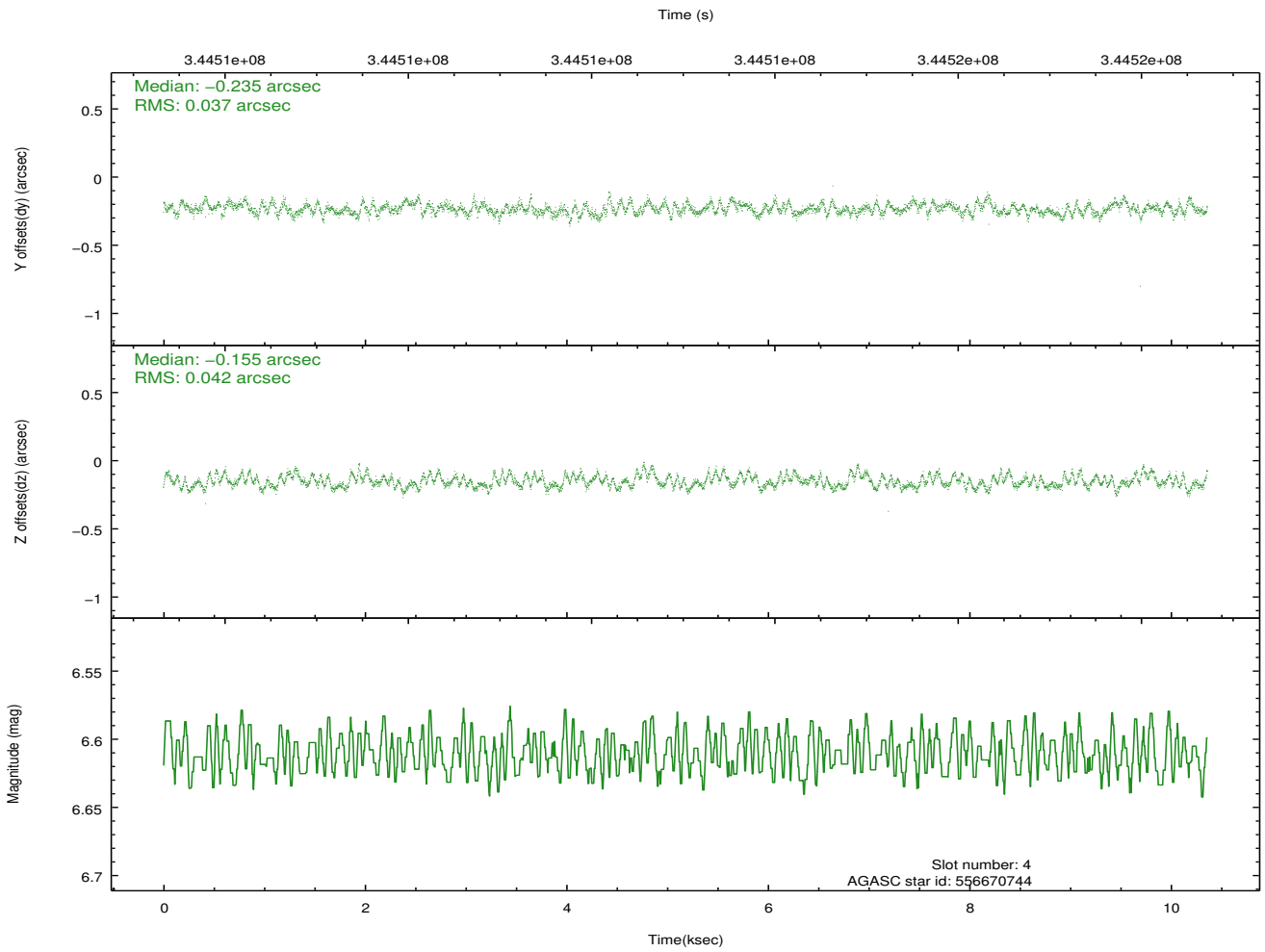
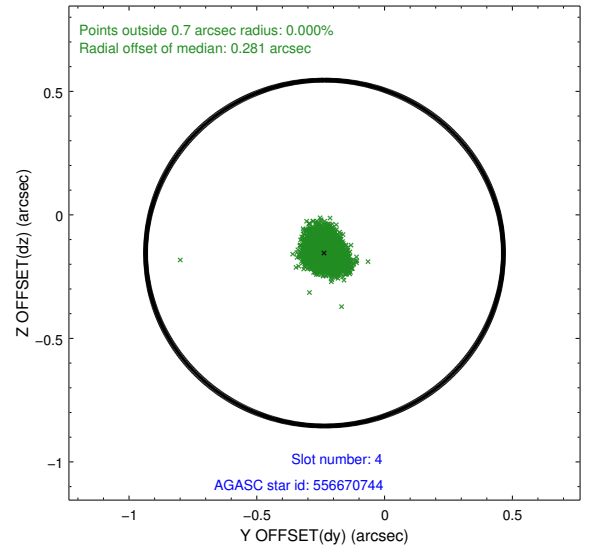
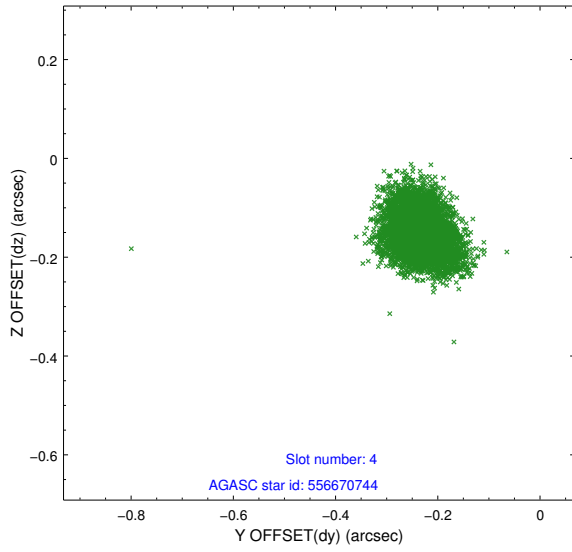
slot	status	id	mag	n_pts	med_dy	med_dz	dr1	dr2	ra	dec	mean_y	mean_z
0	FID	ACIS-I-1	7.12	2528	0.017	0.033	0.018	0.030	0.000000	0.000000	925.40	-839.03
1	FID	ACIS-I-2	7.04	2528	-0.109	-0.041	0.016	0.025	0.000000	0.000000	-768.54	-845.76
2	FID	ACIS-I-6	7.12	2528	-0.000	0.076	0.015	0.026	0.000000	0.000000	390.85	1702.59
3	GUIDE	519443440	9.73	5050	0.065	0.050	0.098	0.161	312.298954	59.718519	1316.83	-1963.90
4	GUIDE	556670744	6.61	5055	-0.235	-0.155	0.059	0.094	313.895479	60.021949	1901.29	1064.51
5	GUIDE	556672880	9.42	5050	0.013	-0.048	0.095	0.154	313.201380	60.980891	-1687.78	1805.30
6	GUIDE	556672952	8.70	5053	0.041	0.180	0.073	0.115	313.206848	60.703637	-832.96	1291.33
7	GUIDE	519440936	9.51	5050	0.114	-0.028	0.106	0.169	313.188013	59.889073	1648.07	-272.97

2.4 Star Slots

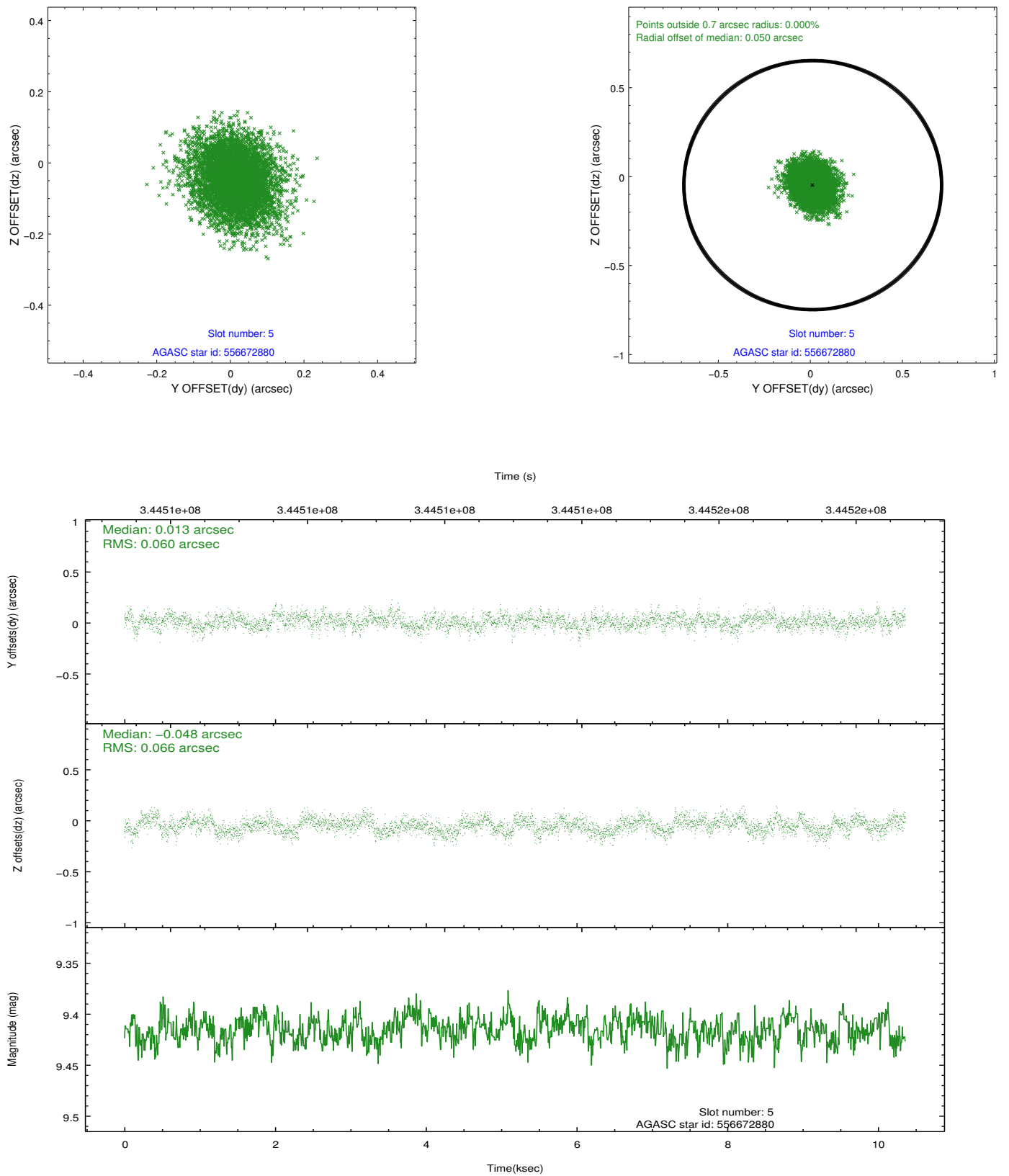
2.4.1 Slot 3



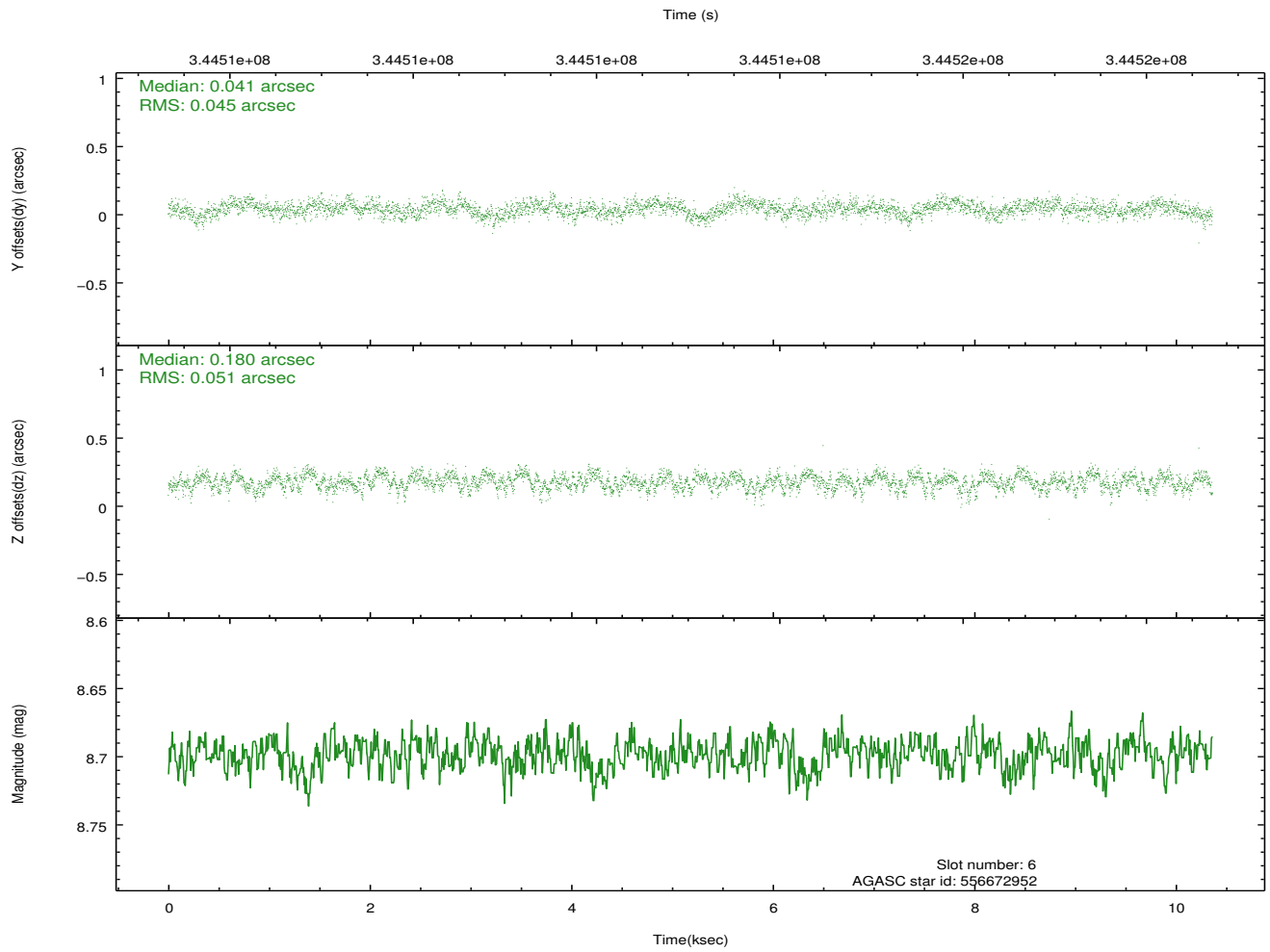
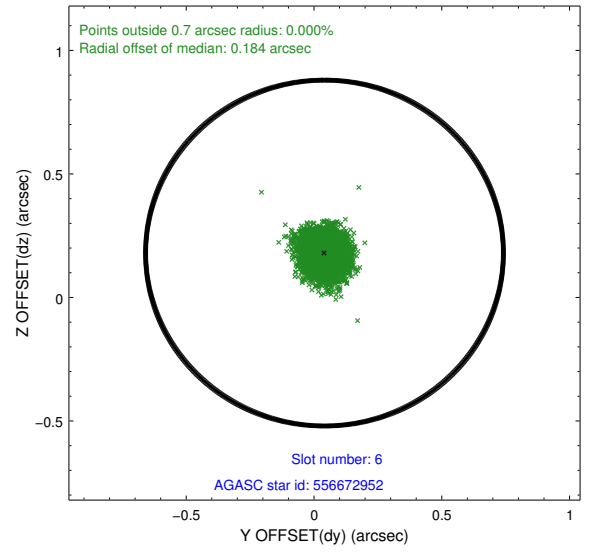
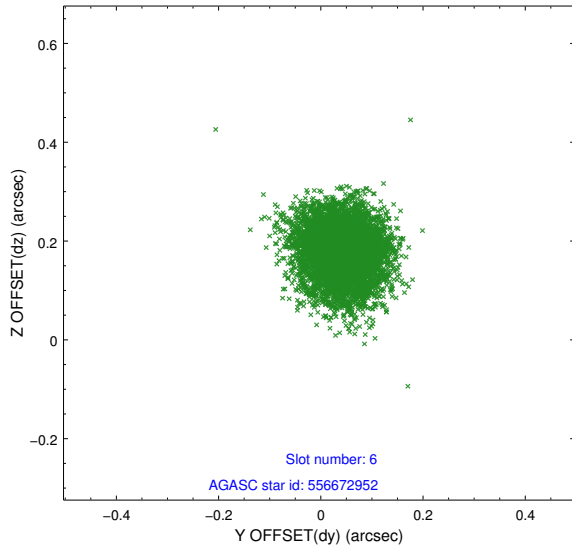
2.4.2 Slot 4



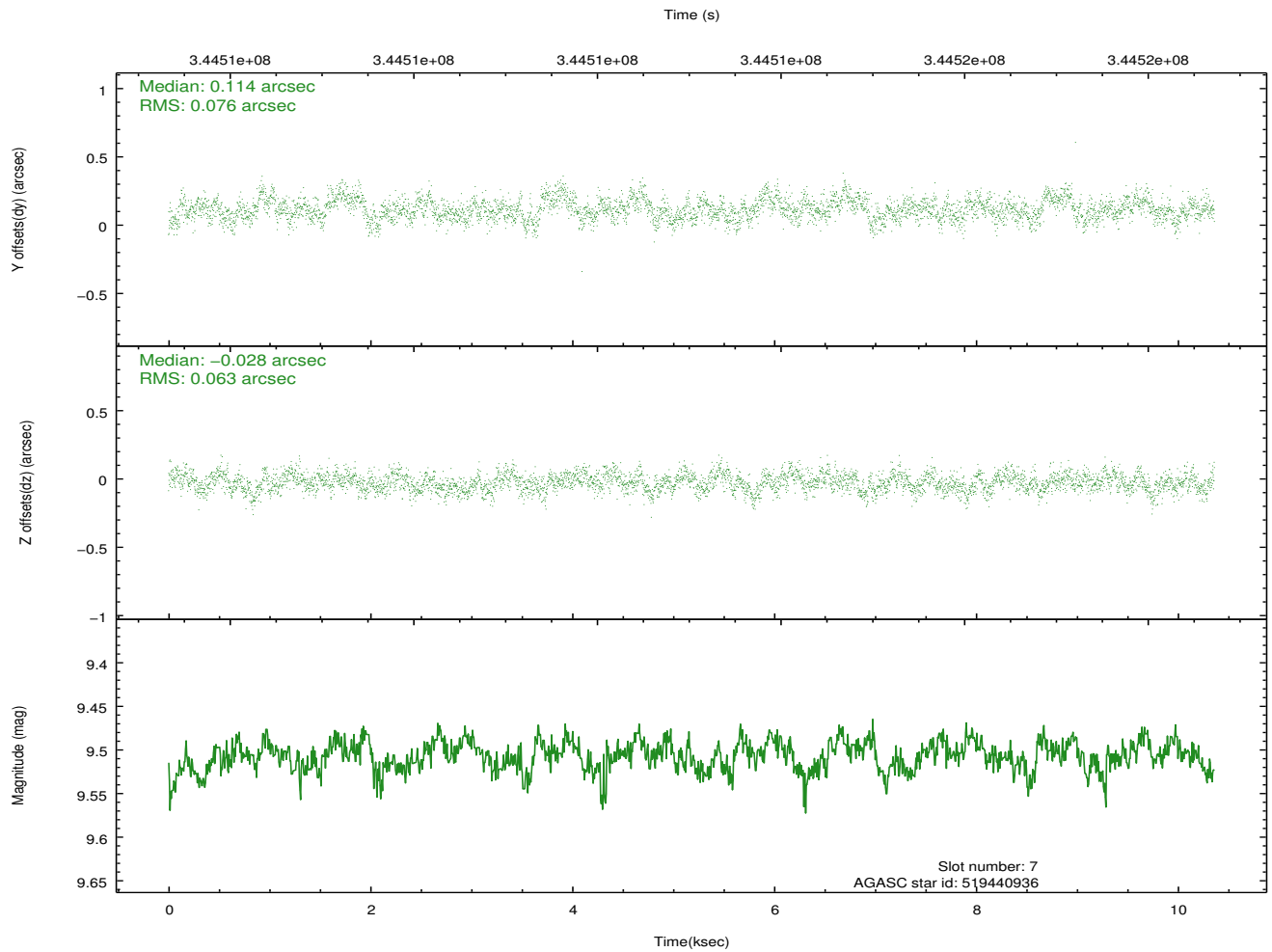
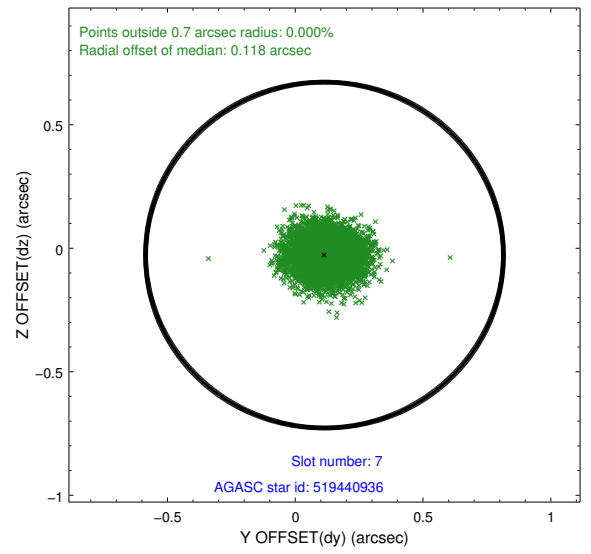
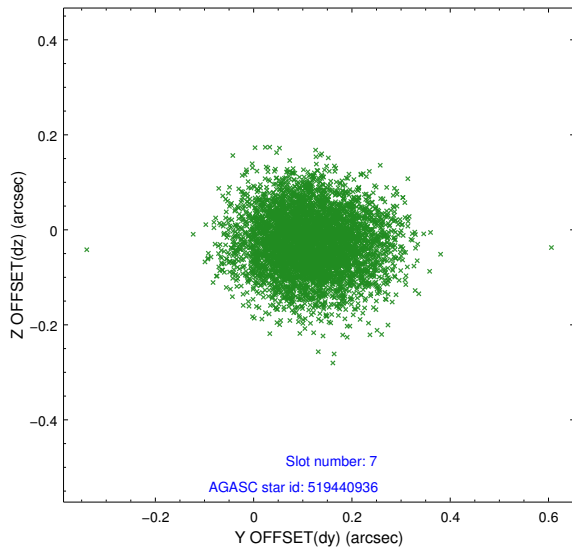
2.4.3 Slot 5



2.4.4 Slot 6

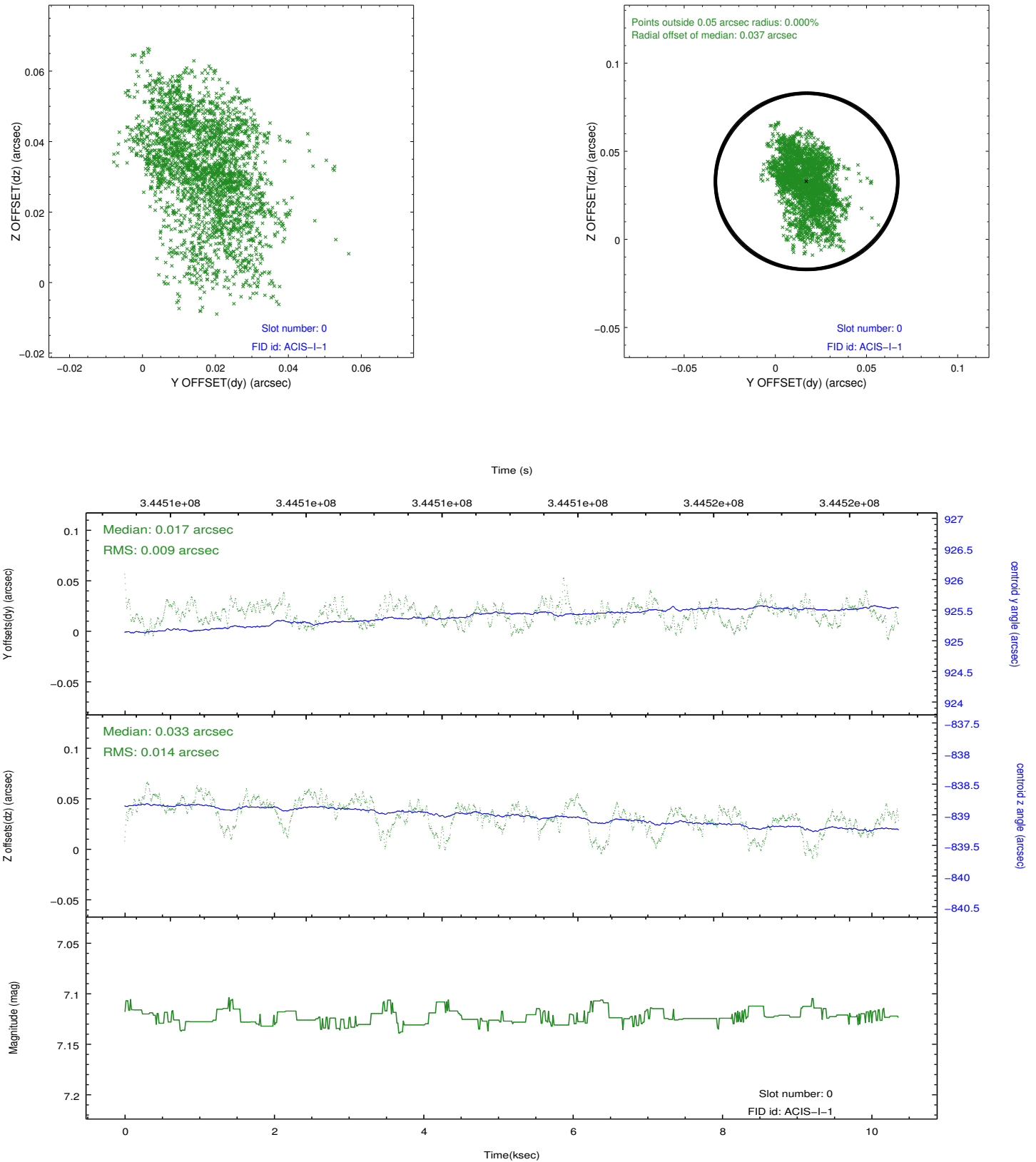


2.4.5 Slot 7

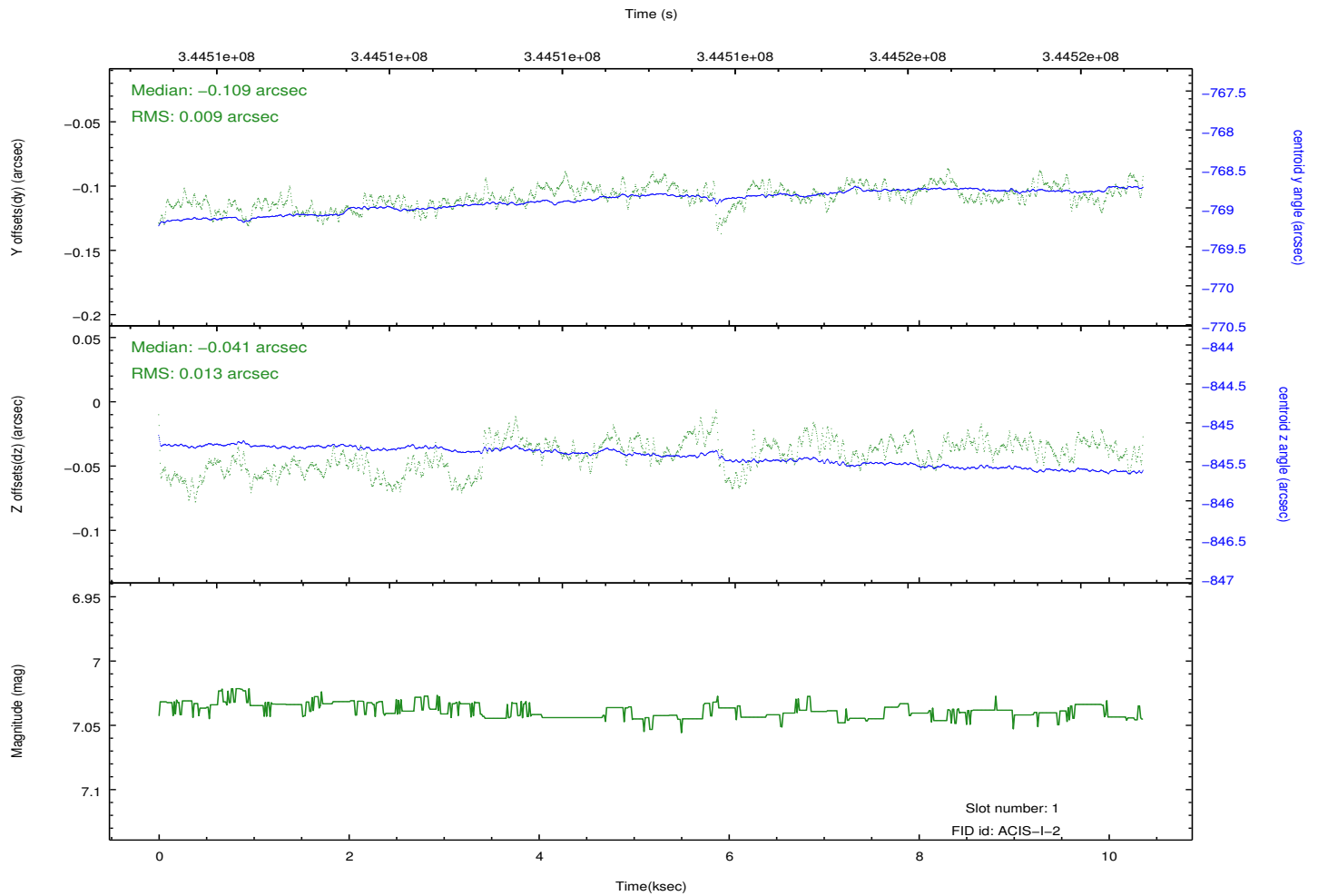
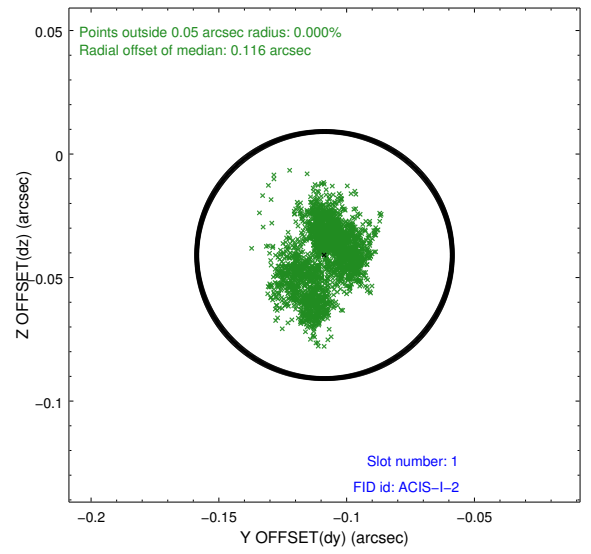
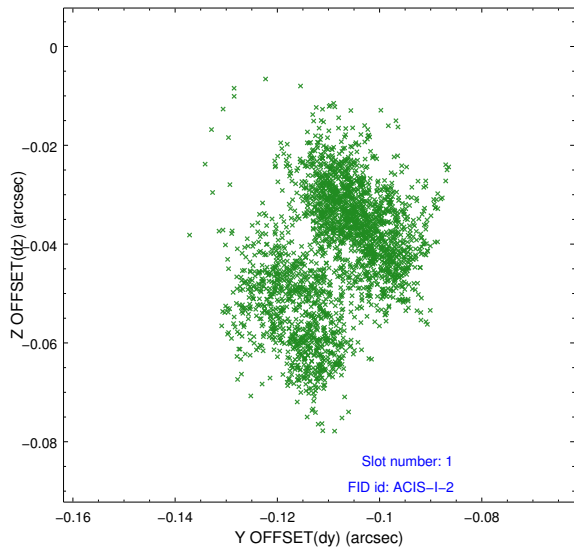


2.5 FID Slots

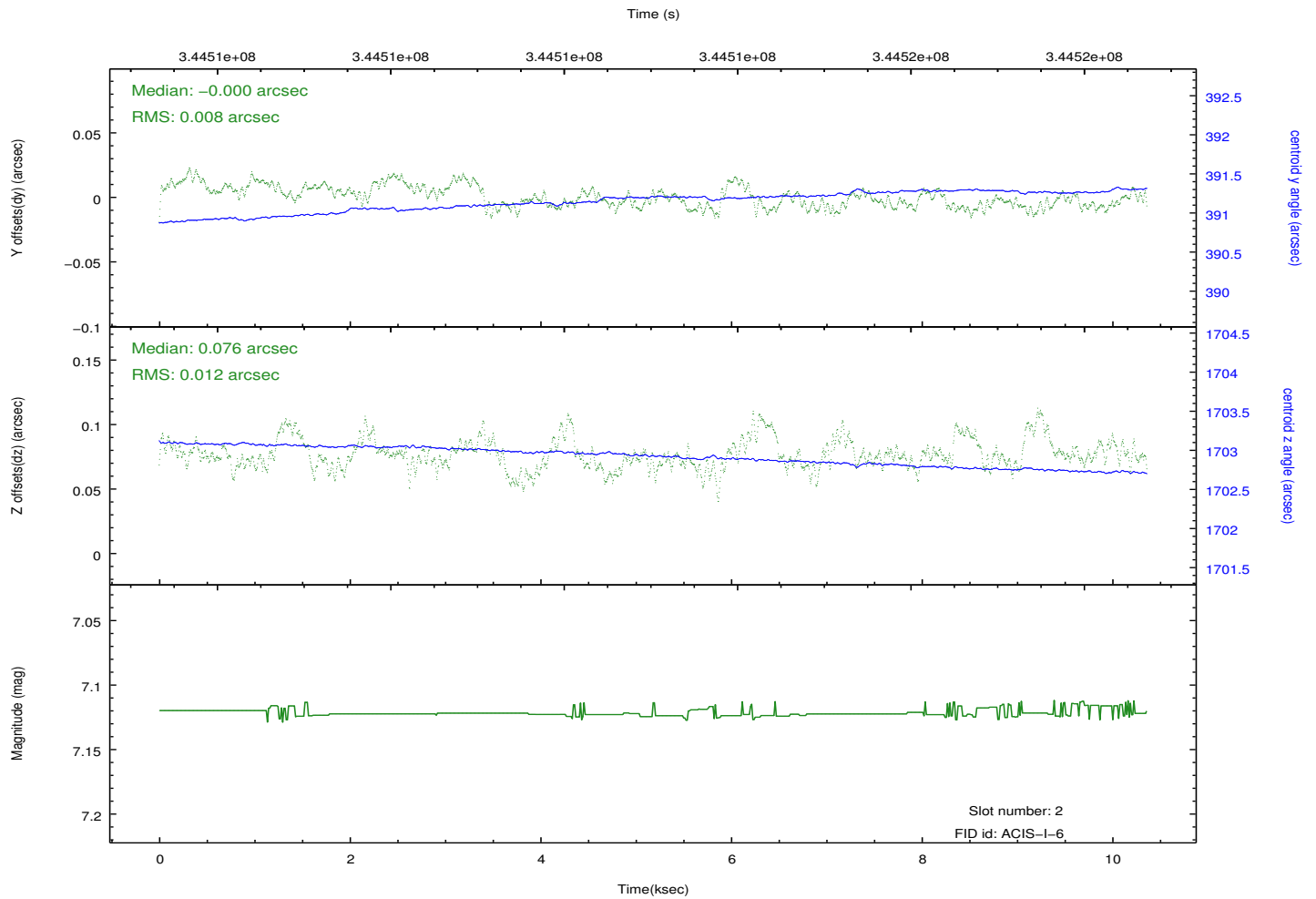
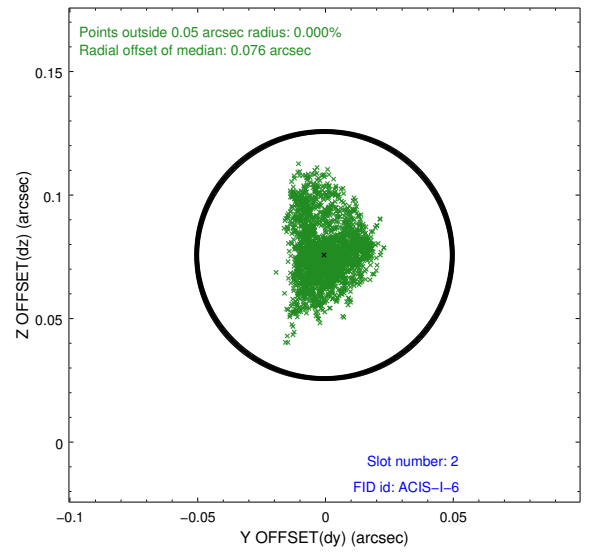
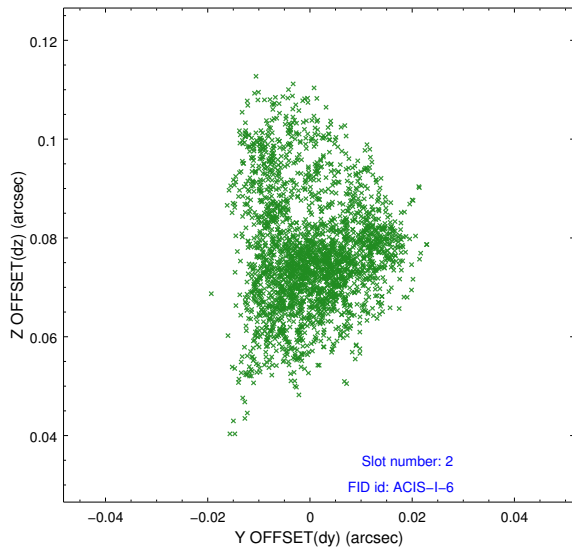
2.5.1 Slot 0



2.5.2 Slot 1



2.5.3 Slot 2



A Summary

A.1 Status

V&V Scientist	Jen Lauer
V&V Date (YYYY-MM-DD)	2012.06.01
V&V Edition	1
V&V Disposition and Status	OK
V&V Charge Time	10.0383589

A.2 Comments