

# V&V Reference Report

## L2 ASCDS Version : 8.4.4

Observation 8925 - L2 Version 2  
Chandra X-Ray Center

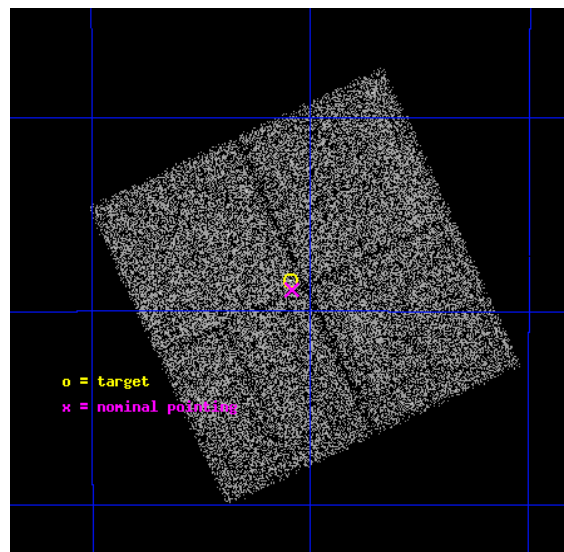
L2 Processing Date : Jul 20 2012

## Contents

<b>1</b>	<b>Front</b>	<b>2</b>
<b>2</b>	<b>OBI</b>	<b>3</b>
2.1	OBI . . . . .	3
2.1.1	Images . . . . .	3
2.1.2	Bias . . . . .	3
2.1.3	Parameters . . . . .	4
2.1.4	Events . . . . .	4
2.2	Compared Parameters . . . . .	5
2.3	Aspect . . . . .	6
2.4	Star Slots . . . . .	9
2.4.1	Slot 3 . . . . .	9
2.4.2	Slot 4 . . . . .	10
2.4.3	Slot 5 . . . . .	11
2.4.4	Slot 6 . . . . .	12
2.4.5	Slot 7 . . . . .	13
2.5	FID Slots . . . . .	14
2.5.1	Slot 0 . . . . .	14
2.5.2	Slot 1 . . . . .	15
2.5.3	Slot 2 . . . . .	16
<b>A</b>	<b>Summary</b>	<b>17</b>
A.1	Status . . . . .	17
A.2	Comments . . . . .	17

# 1 Front

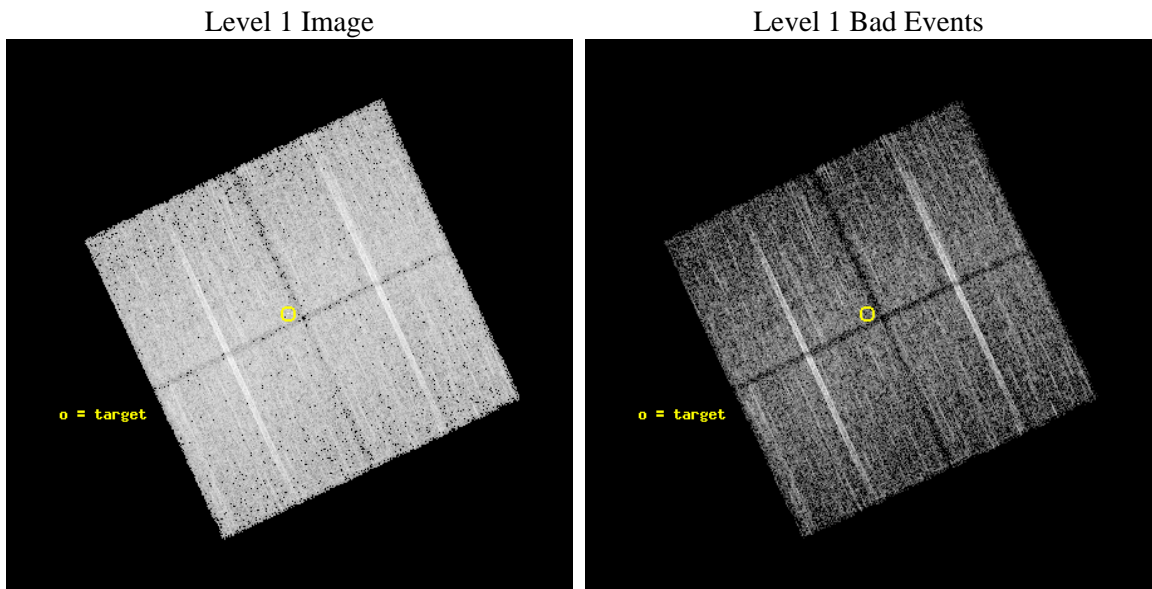
seq_num	200506	Sequence number
obs_id	8925	Observation id
title	ToO Studies with CXO of Pre-Main Sequence Stars Undergoing Optical Outbursts	Proposal title
observer	Professor David Weintraub	Principal investigator
object	EX Lupi	Source name
dtcycle	0	&#160
cycle	P	events from which exps? Prim/Second/Both
ra_targ	240.772917	Observer's specified target RA [deg]
dec_targ	-40.307	Observer's specified target Dec [deg]
ra_nom	240.77148395298	Nominal RA [deg]
dec_nom	-40.314983661862	Nominal Dec [deg]
roll_nom	244.85905494212	Nominal Roll [deg]
revision	2	Processing version of data
ontime	10558.600081205	Sum of GTIs [s]
livetime	10420.644198016	Livetime [s]
ontime0	10558.600081205	Sum of GTIs [s]
ontime1	10558.600081205	Sum of GTIs [s]
ontime2	10558.600081205	Sum of GTIs [s]
ontime3	10558.600081205	Sum of GTIs [s]
l2events	45570	Number of level 2 events



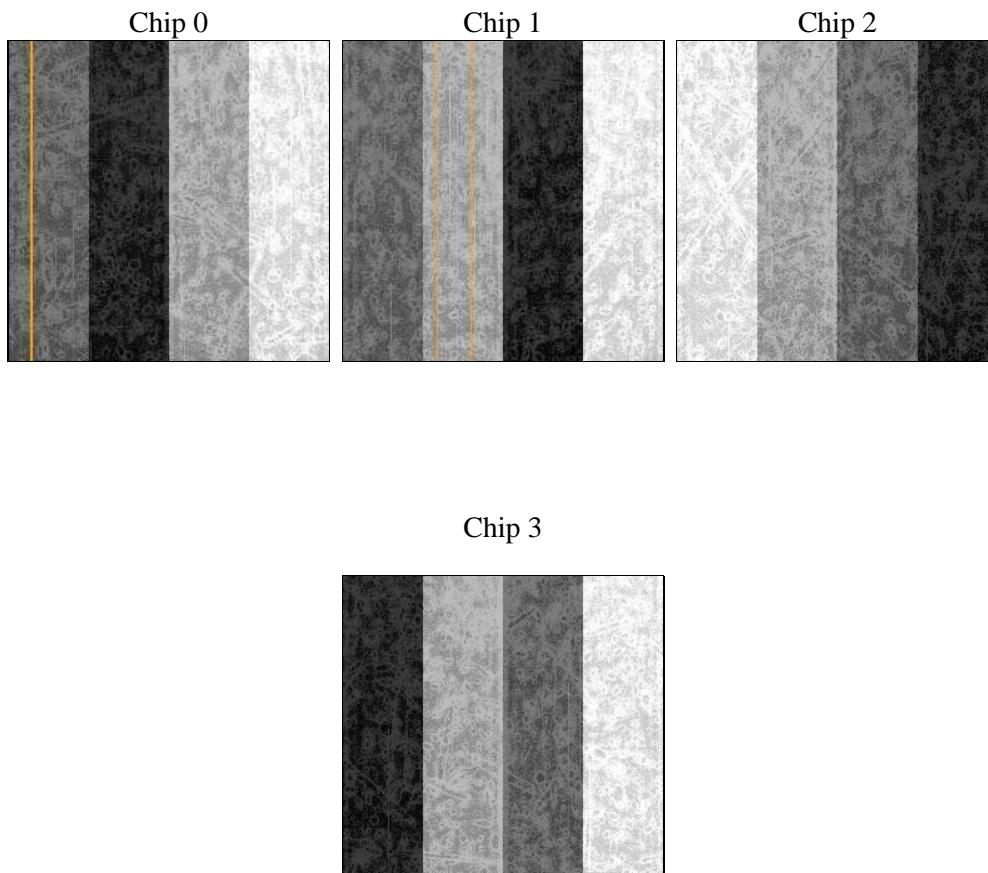
## 2 OBI

### 2.1 OBI

#### 2.1.1 Images



#### 2.1.2 Bias



### 2.1.3 Parameters

obi_num	0	Obi number	sched_exp_time	30000.000000	[s] Scheduled observation exposure time
ascdsver	8.4.5	Processing system revision	ontime	10558.600081205	Sum of GTIs [s]
caldbver	4.5.0	&#160	ontime0	10558.600081205	Sum of GTIs [s]
date	2012-07-20T17:57:00	Date and time of file creation	ontime1	10558.600081205	Sum of GTIs [s]
revision	2	Processing version of data	ontime2	10558.600081205	Sum of GTIs [s]
			ontime3	10558.600081205	Sum of GTIs [s]
			l1events	428731	Number of level 1 events

### 2.1.4 Events

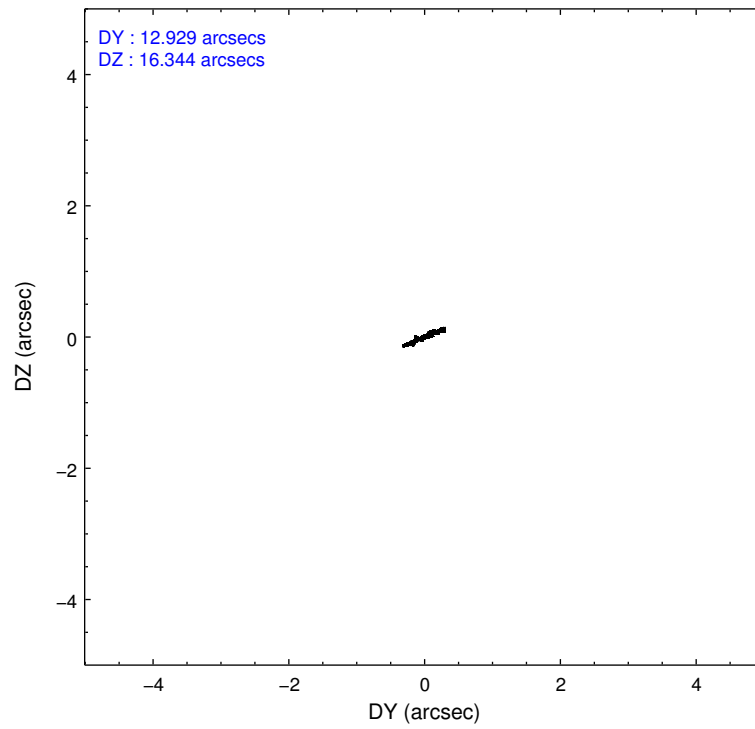
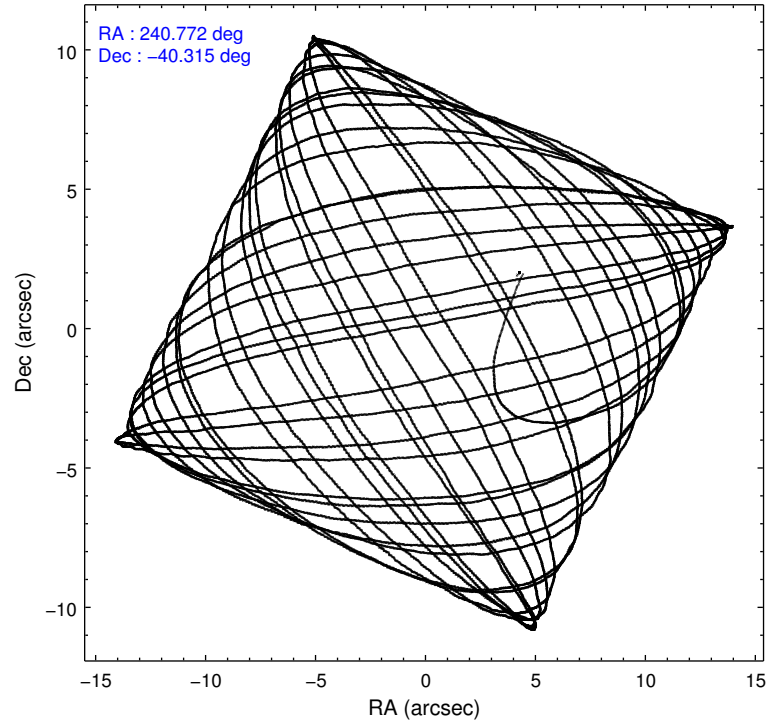
	ccd 0	ccd 1	ccd 2	ccd 3
level 1 events	102738	106392	109906	109695
rejected events	89586	92497	96863	96668
rejected %	87%	86%	88%	88%

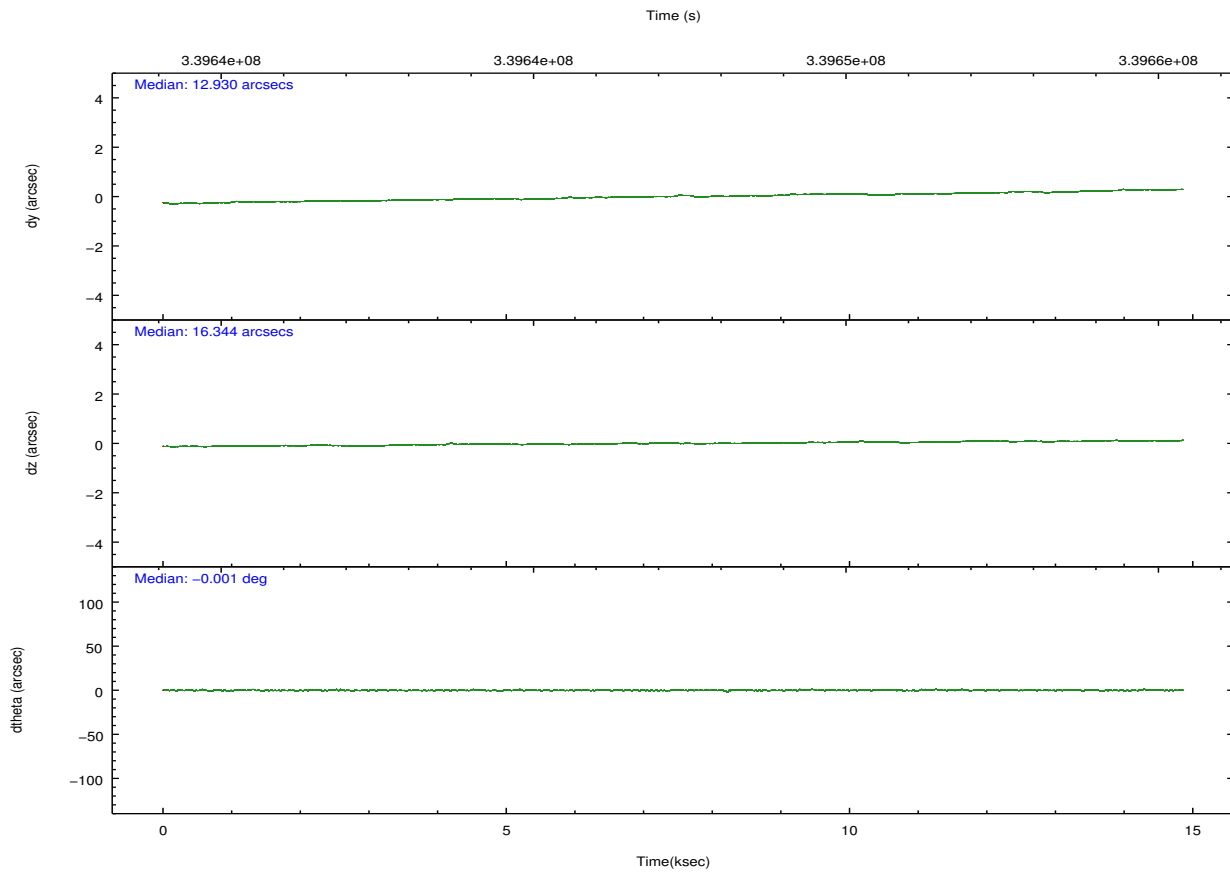
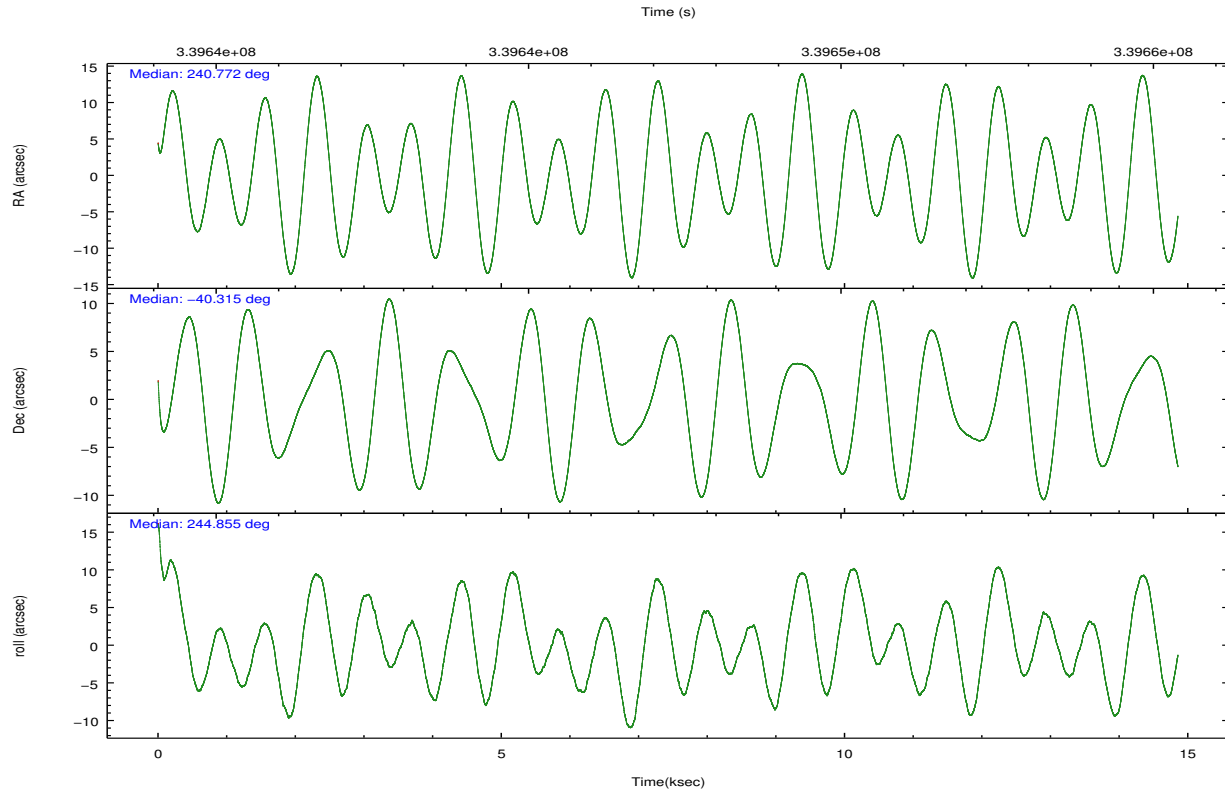
	ccd 0	ccd 1	ccd 2	ccd 3
grade 0 events	6109	5722	6526	6337
	5%	5%	5%	5%
grade 1 events	51	70	87	77
	0%	0%	0%	0%
grade 2 events	3240	3662	2916	2814
	3%	3%	2%	2%
grade 3 events	1291	1410	1168	1335
	1%	1%	1%	1%
grade 4 events	1193	1362	1325	1253
	1%	1%	1%	1%
grade 5 events	4742	5013	4498	5442
	4%	4%	4%	4%
grade 6 events	2476	2956	2236	2449
	2%	2%	2%	2%
grade 7 events	83636	86197	91150	89988
	81%	81%	82%	82%

## 2.2 Compared Parameters

Parameter	Planned	Actual	Parameter	Planned	Actual
Instrument	ACIS	ACIS	Obspar format version number	7	7
Detector	ACIS-0123	ACIS-0123	Obspar file type	PREDICTED	ACTUAL
Grating	NONE	NONE	Obspar update status	NONE	UPDATED
Data mode	FAINT	FAINT	Number of optional ACIS chips dropped	0	0
Observation mode	POINTING	POINTING	On-chip summing requested	N	N
[deg] Pointing RA	240.768277	240.7714839529786	Subarray requested	NONE	NONE
[deg] Pointing Dec	-40.287614	-40.31498366186175	Alternating exposures requested	N	N
[deg] Pointing Roll	244.648289	244.8590549421246	[s] Primary exposure time	0.000000	3.1
[mm] SIM focus pos	-0.782348	-0.7809083437167272			
[mm] SIM defocus	0	0.001439871863259334			
[mm] SIM translation stage pos	-233.592463	-233.5874344608287			
[mm] SIM translation stage offset	0	-0.005018542100998502			
[s] Observation start time (MET)	339639955.184000	339638577.83915			
Observation start date	2008-10-06T00:24:50	2008-10-06T00:02:57			
[s] Observation end time (MET)	339669955.184000	339655623.58999			
Observation end date	2008-10-06T08:44:50	2008-10-06T04:47:03			
Read mode	TIMED	TIMED			

## 2.3 Aspect



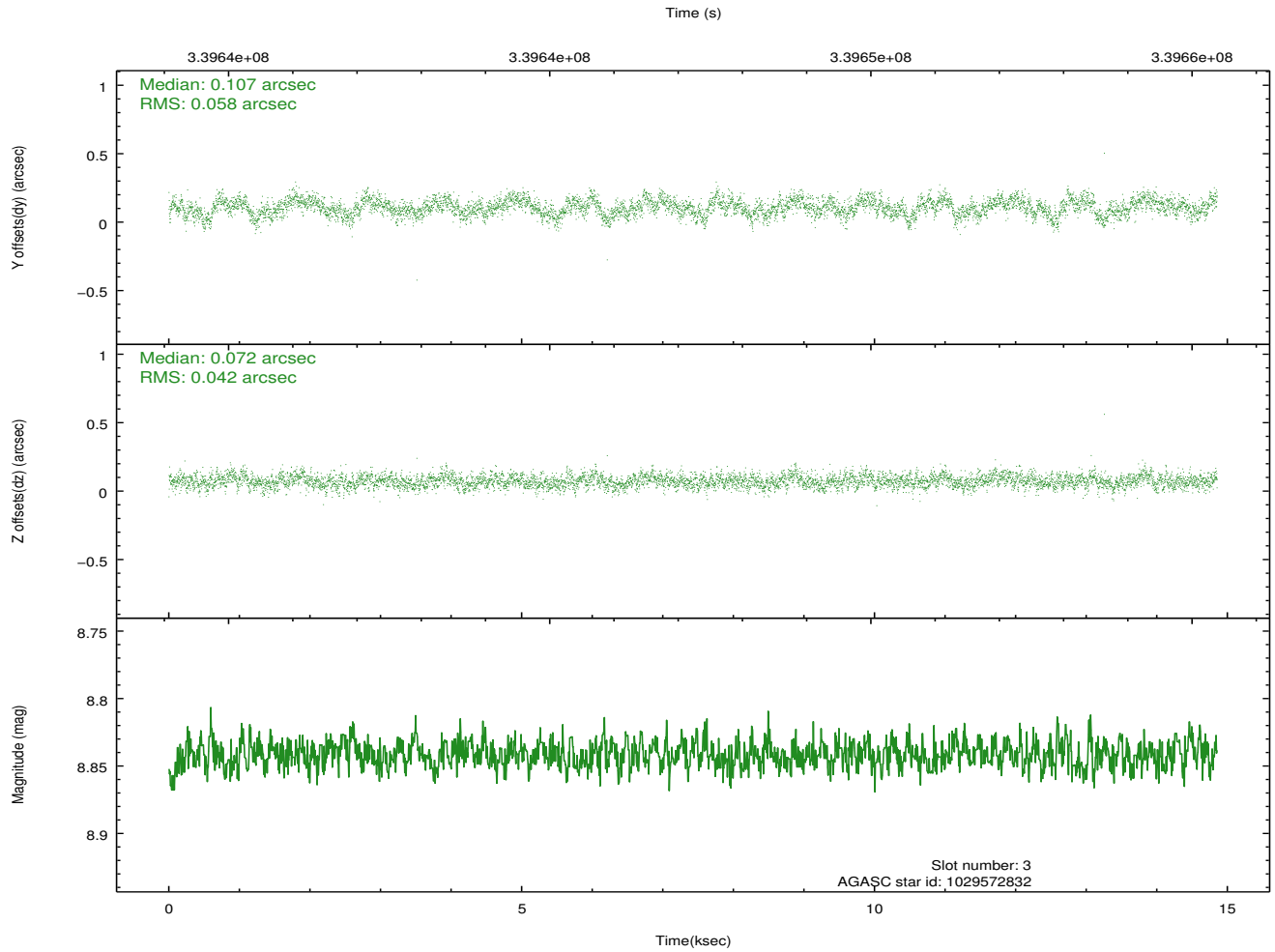
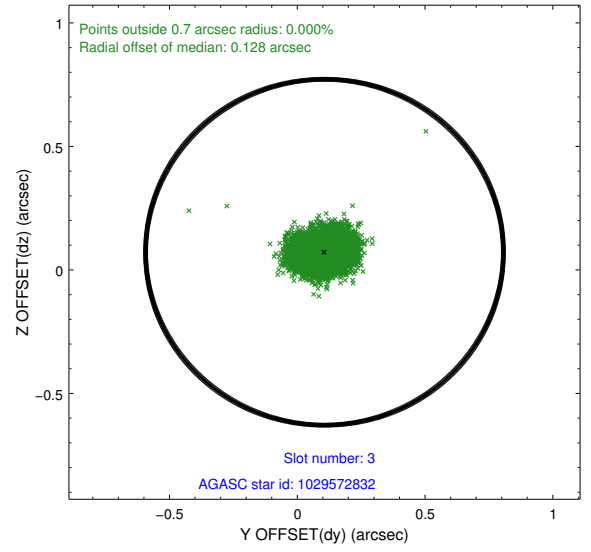
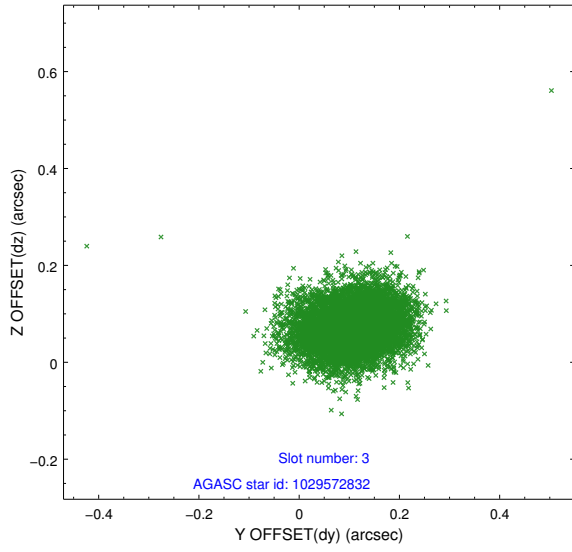


### Slot Statistics

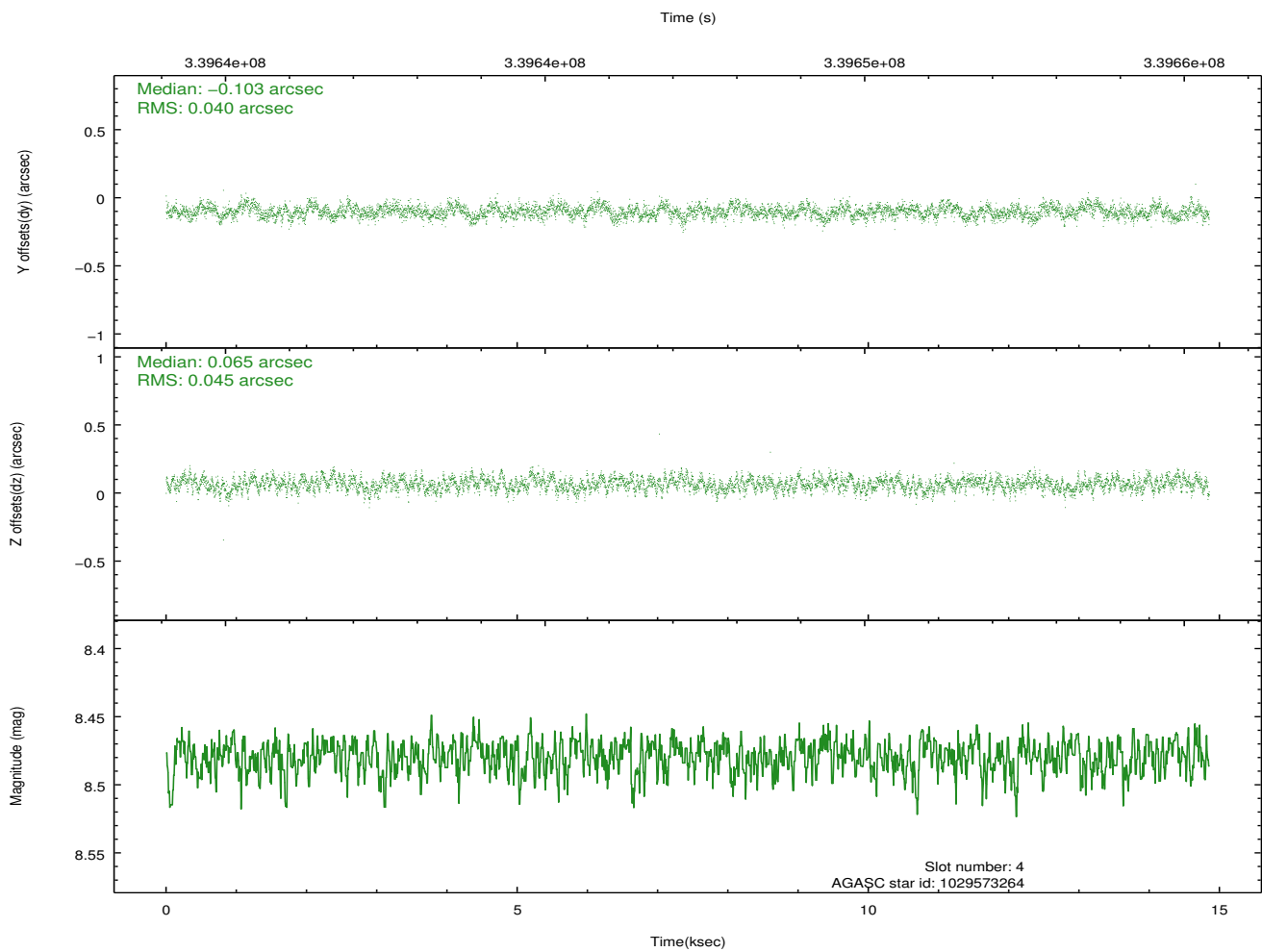
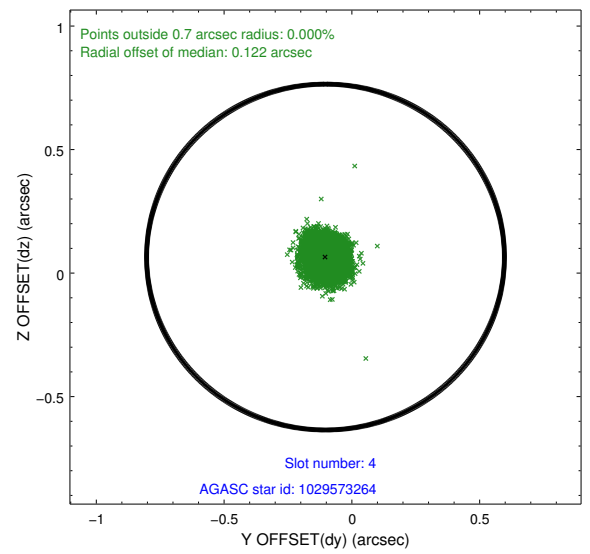
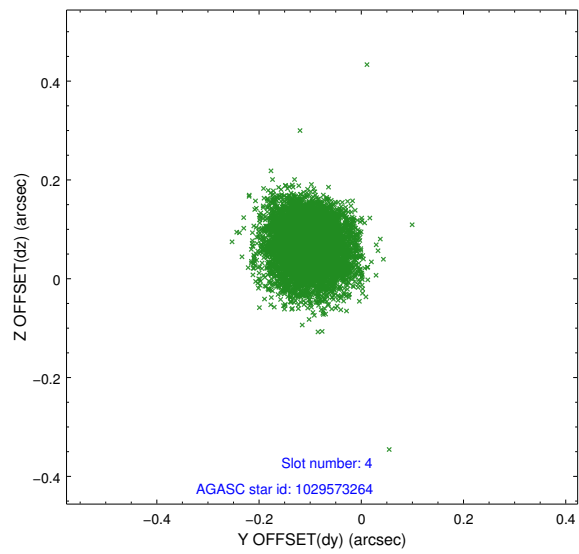
slot	status	id	mag	n_pts	med_dy	med_dz	dr1	dr2	ra	dec	mean_y	mean_z
0	FID	ACIS-I-1	7.01	3623	0.055	-0.033	0.007	0.013	0.000000	0.000000	926.63	-840.03
1	FID	ACIS-I-5	7.00	3624	-0.186	0.063	0.008	0.015	0.000000	0.000000	-1821.52	1057.45
2	FID	ACIS-I-6	7.00	3624	0.040	0.040	0.007	0.010	0.000000	0.000000	391.87	1702.24
3	GUIDE	1029572832	8.84	7240	0.107	0.072	0.075	0.123	240.911636	-41.020487	2218.10	1481.94
4	GUIDE	1029573264	8.48	7245	-0.103	0.065	0.064	0.102	241.313581	-40.319539	-532.50	1403.99
5	GUIDE	1029575760	7.99	7246	0.084	-0.064	0.066	0.102	241.064770	-40.844631	1468.12	1589.09
6	GUIDE	1029578000	7.72	7246	-0.078	-0.048	0.065	0.104	241.211449	-40.737672	949.67	1787.67
7	GUIDE	1029580448	9.64	7195	-0.012	-0.023	0.113	0.183	240.622045	-39.636367	-1944.41	-1370.07

## 2.4 Star Slots

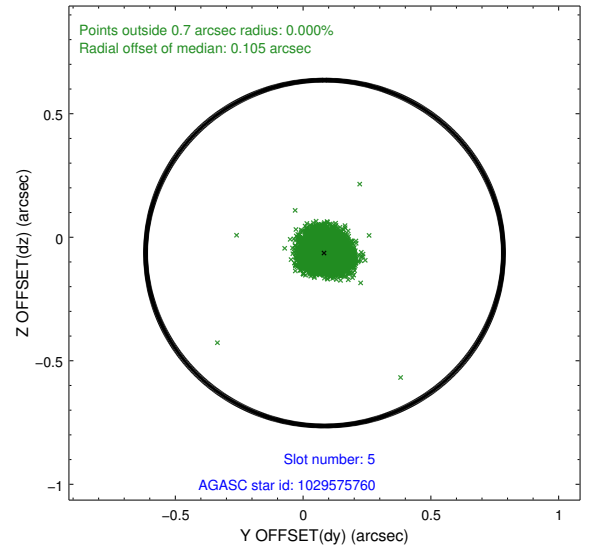
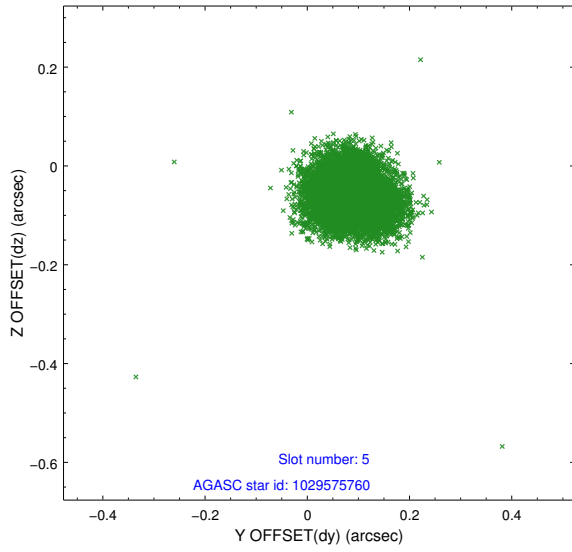
### 2.4.1 Slot 3



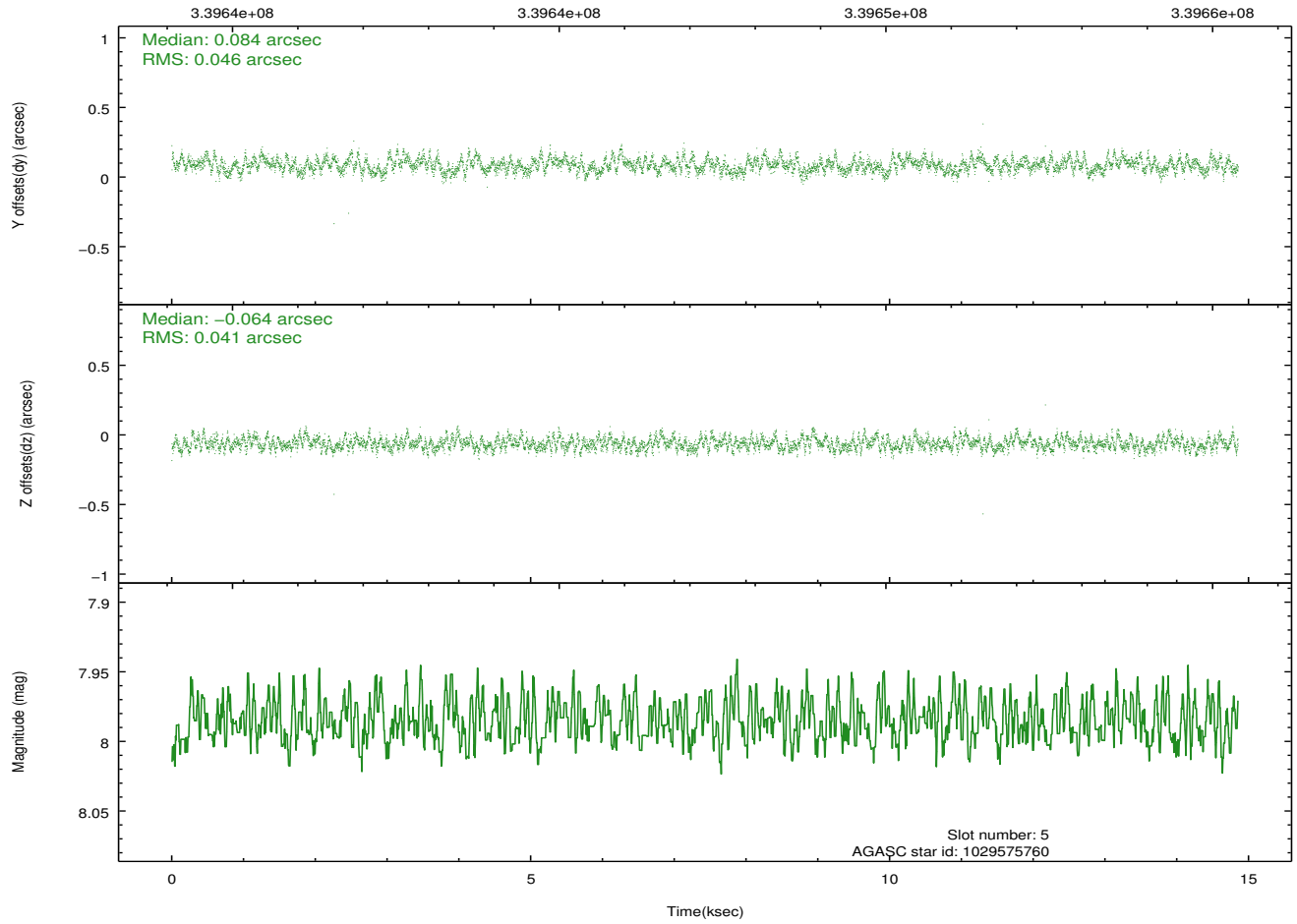
## 2.4.2 Slot 4



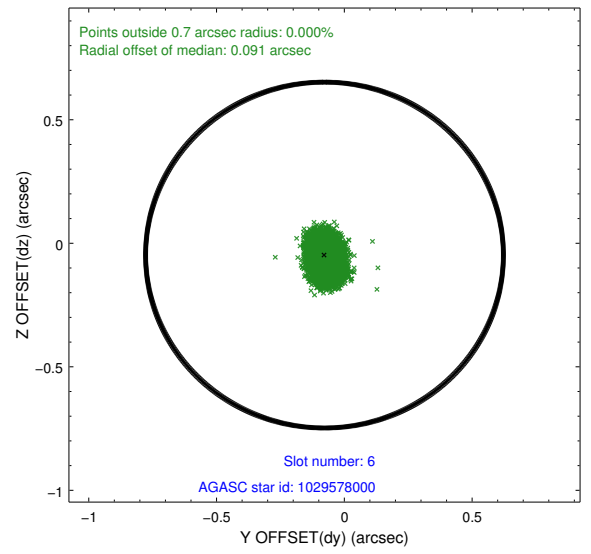
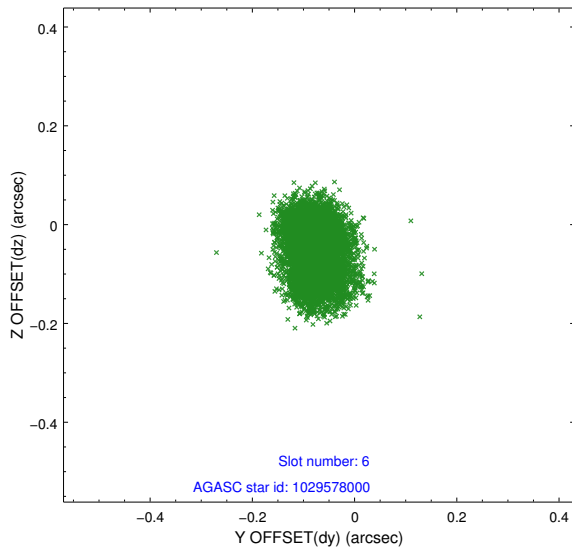
### 2.4.3 Slot 5



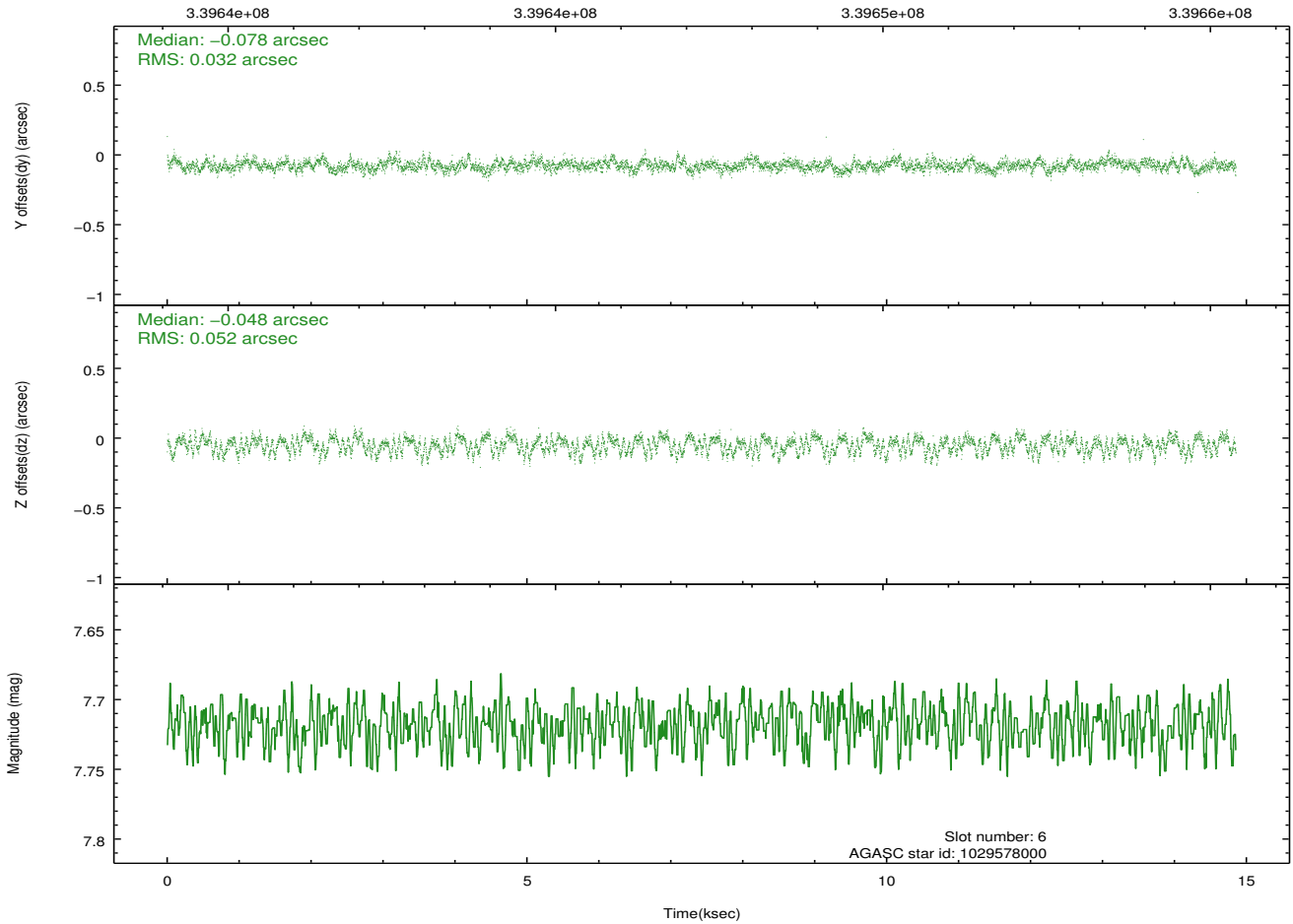
Time (s)



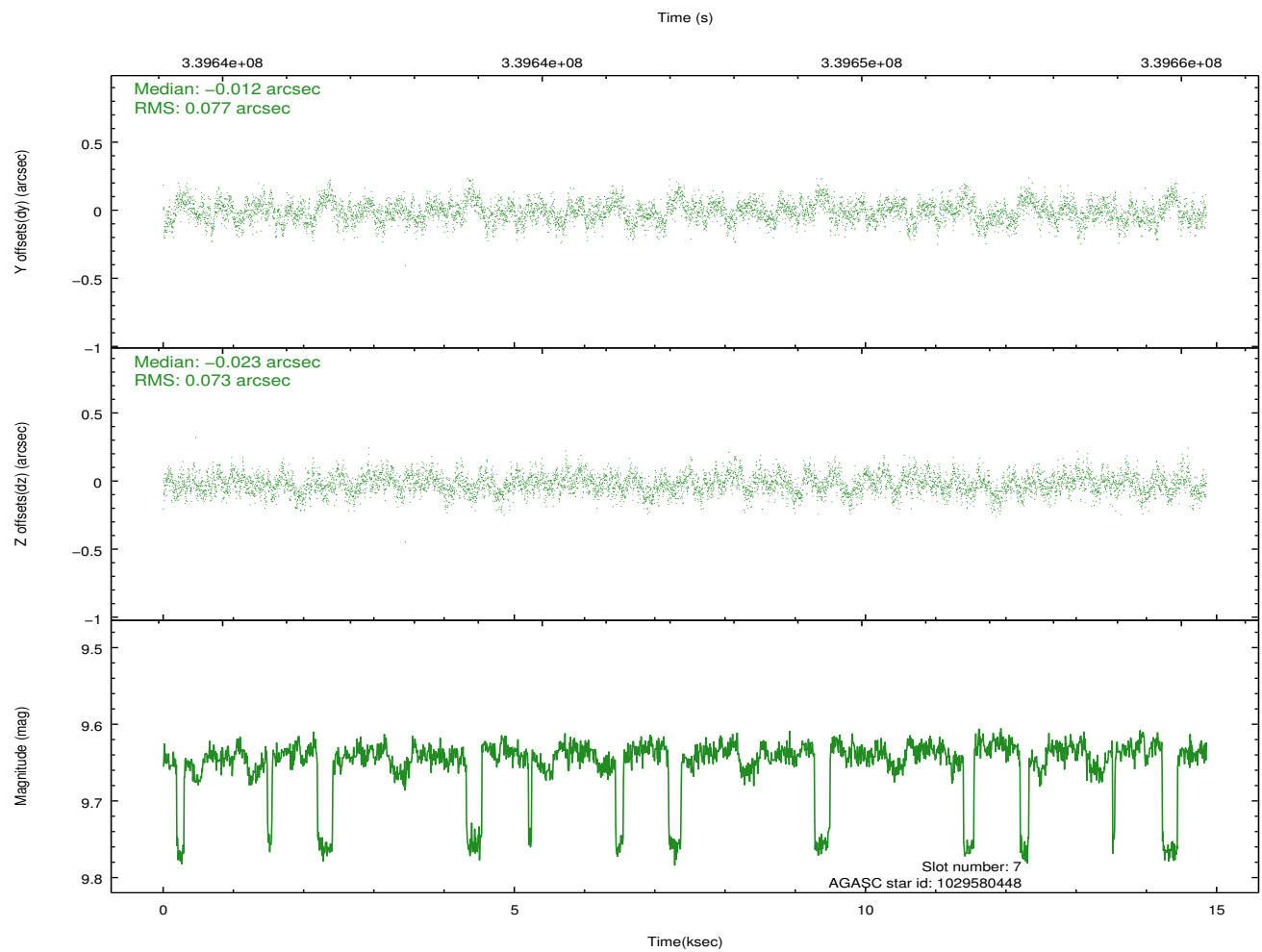
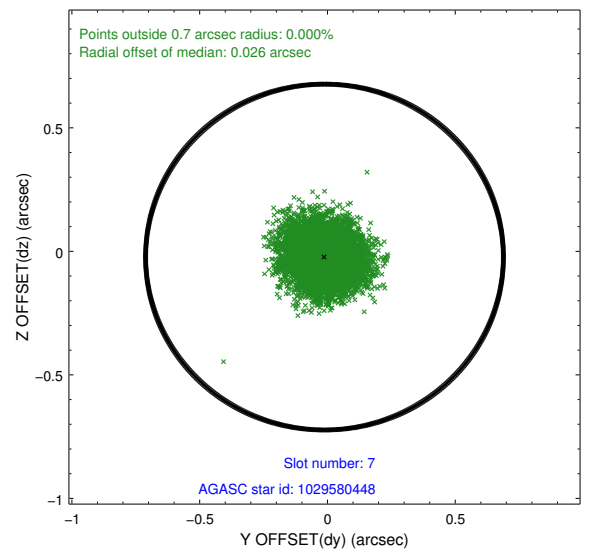
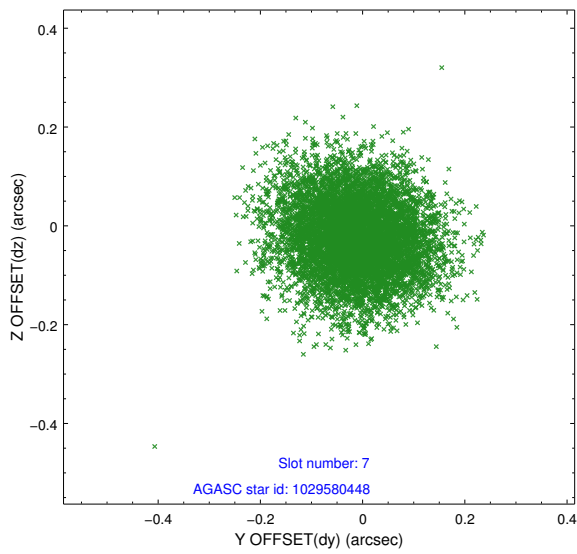
## 2.4.4 Slot 6



Time (s)

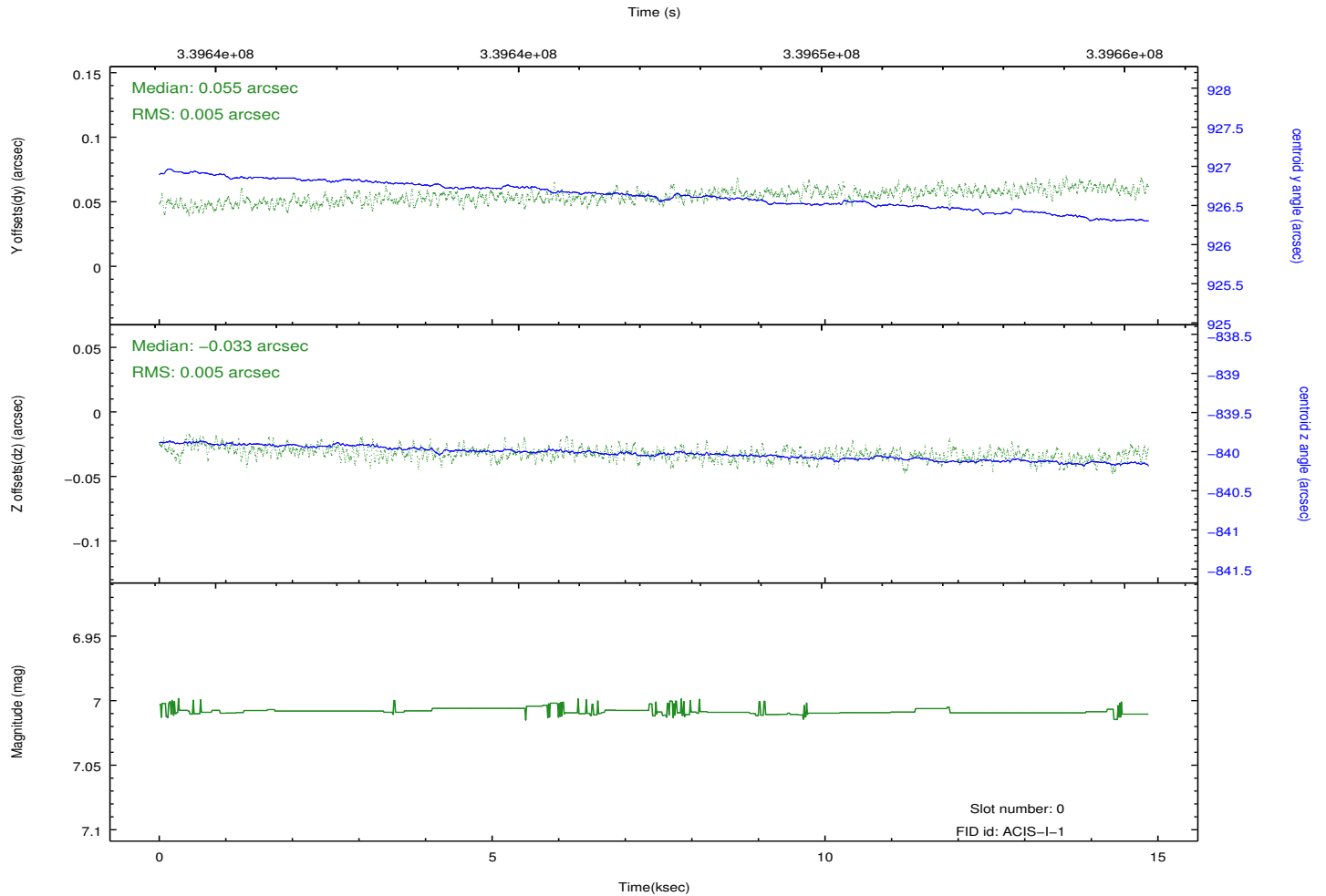
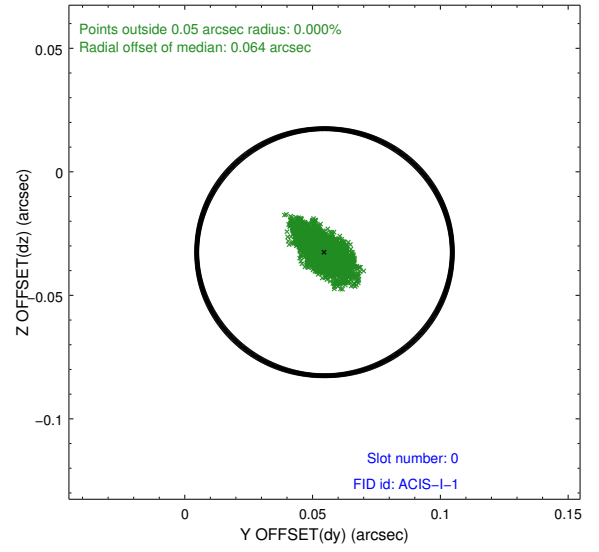
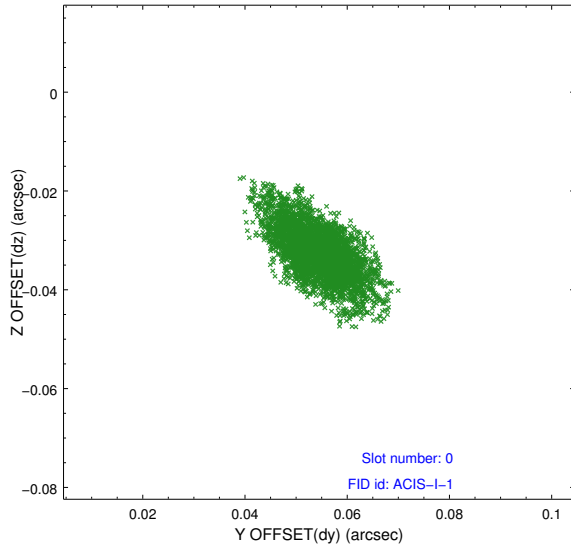


## 2.4.5 Slot 7

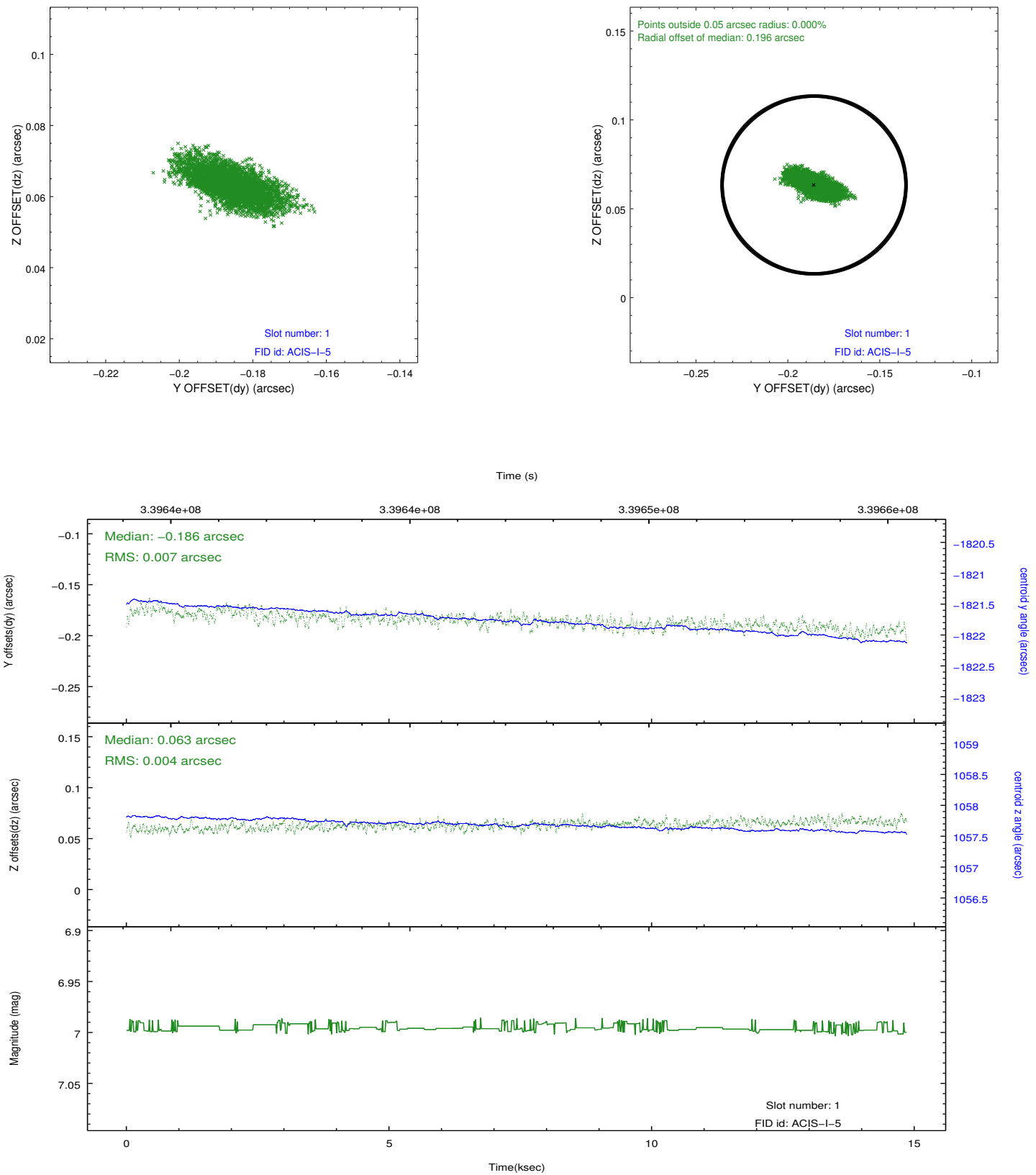


## 2.5 FID Slots

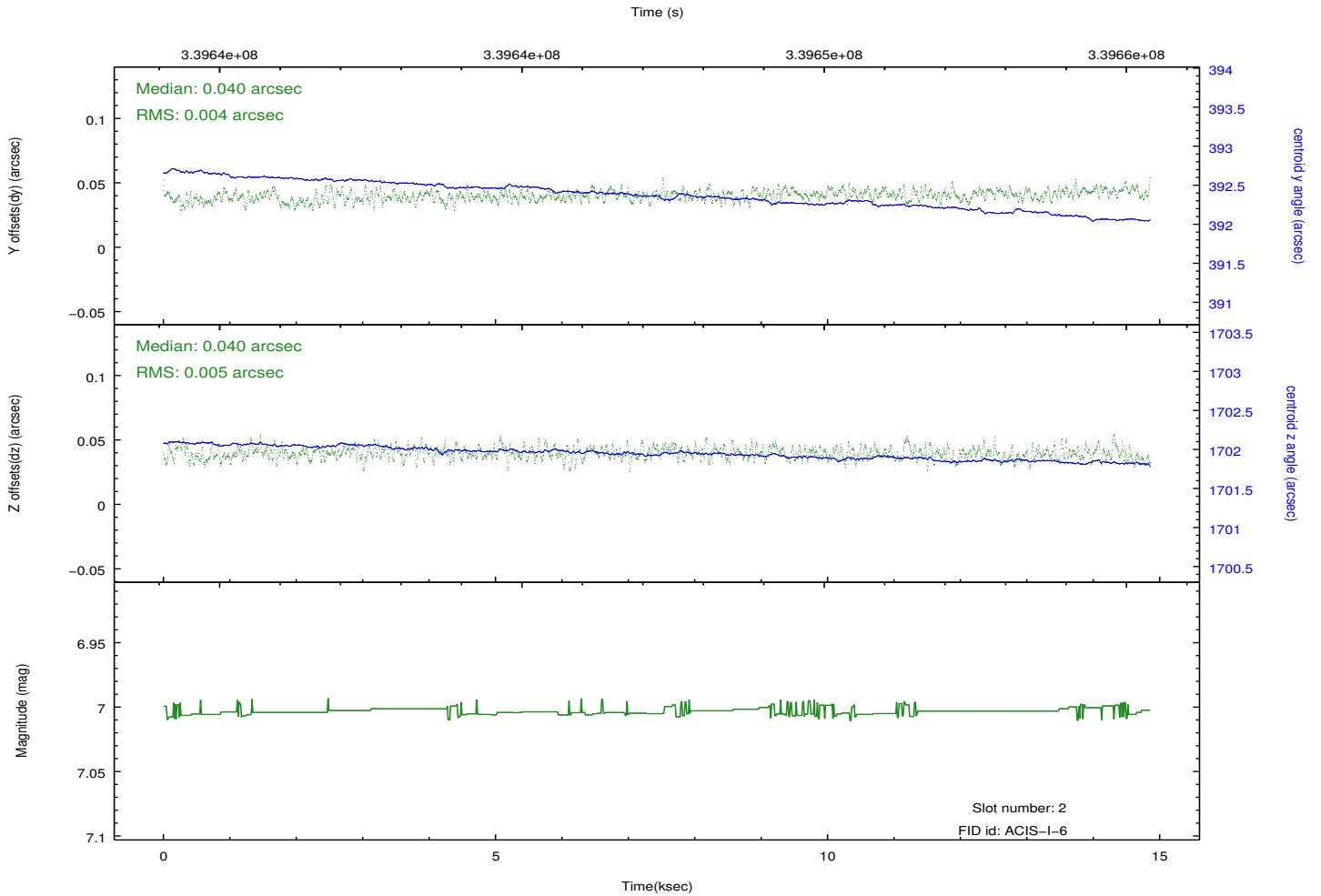
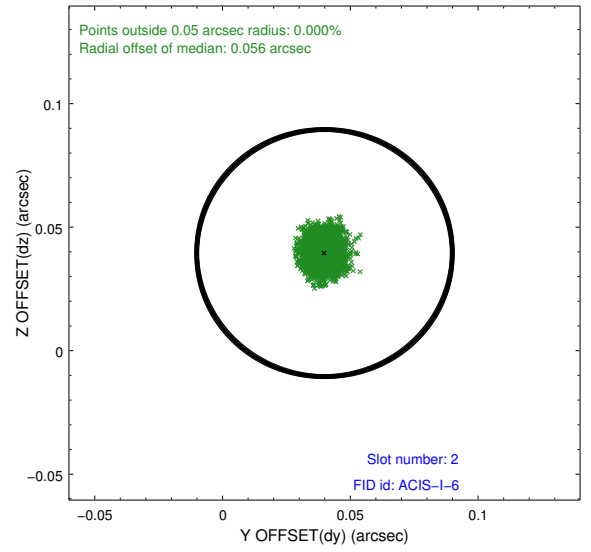
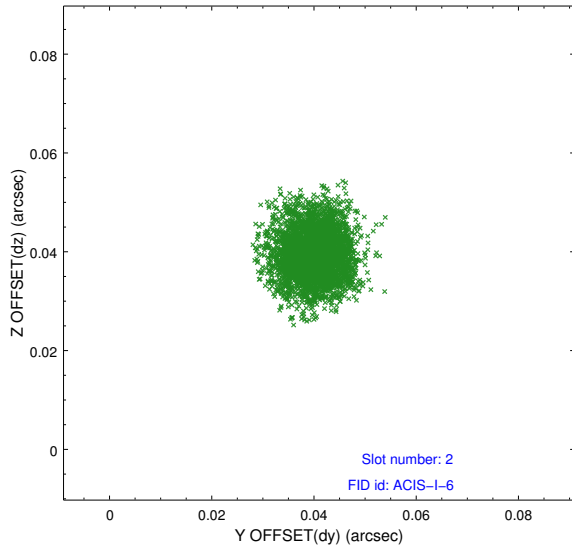
### 2.5.1 Slot 0



## 2.5.2 Slot 1



### 2.5.3 Slot 2



# A Summary

## A.1 Status

V&V Scientist	Beth Sundheim
V&V Date (YYYY-MM-DD)	2012.07.20
V&V Edition	1
V&V Disposition and Status	OK
V&V Charge Time	10.5586

## A.2 Comments

This observation was truncated in order to complete the recovery of ACIS from a previous problem. The observation is not affected by the ACIS problem, other than the shortened observation time.