

V&V Reference Report

L2 ASCDS Version : 8.4.4

Observation 8945 - L2 Version 2
Chandra X-Ray Center

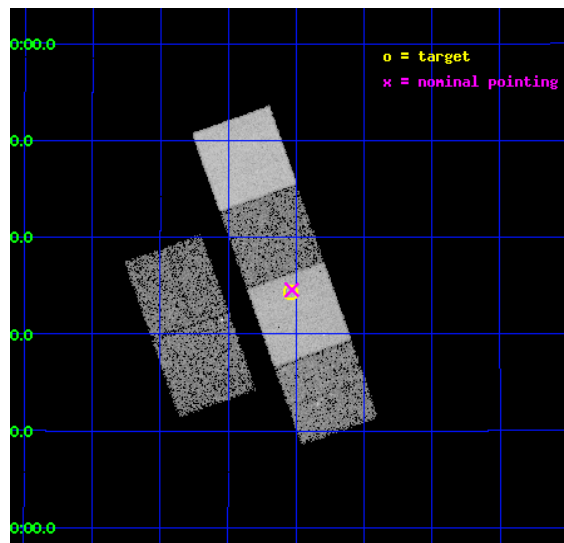
L2 Processing Date : May 10 2012

Contents

1	Front	2
2	OBI	3
2.1	OBI	3
2.1.1	Images	3
2.1.2	Bias	3
2.1.3	Parameters	4
2.1.4	Events	4
2.2	Compared Parameters	5
2.3	Aspect	6
2.4	Star Slots	9
2.4.1	Slot 3	9
2.4.2	Slot 4	10
2.4.3	Slot 5	11
2.4.4	Slot 6	12
2.4.5	Slot 7	13
2.5	FID Slots	14
2.5.1	Slot 0	14
2.5.2	Slot 1	15
2.5.3	Slot 2	16
A	Summary	17
A.1	Status	17
A.2	Comments	17

1 Front

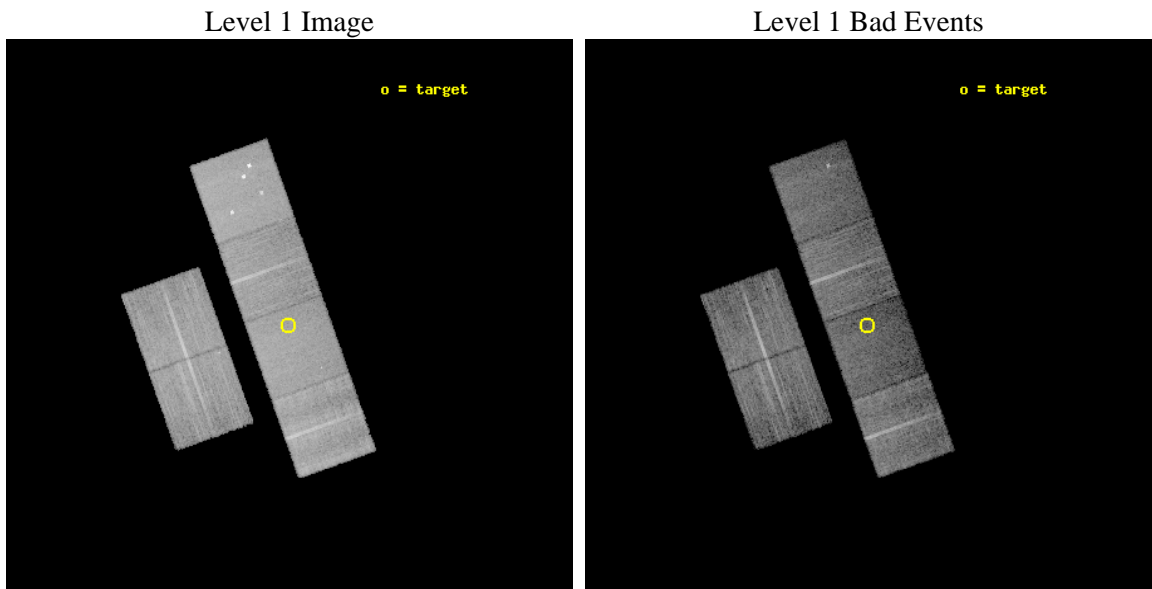
seq_num	300201	Sequence number
obs_id	8945	Observation id
title	A Chandra Legacy Survey of Dynamically Active Globular Clusters	Pr
observer	Prof. David Pooley	Principal investigator
object	Pal 10	Source name
dtcycle	0	
cycle	P	events from which exps? Prim/Second/Both
ra_targ	289.50875	Observer's specified target RA [deg]
dec_targ	18.571667	Observer's specified target Dec [deg]
ra_nom	289.50764830051	Nominal RA [deg]
dec_nom	18.576396141605	Nominal Dec [deg]
roll_nom	70.437294998153	Nominal Roll [deg]
revision	2	Processing version of data
ontime	11240.258666098	Sum of GTIs [s]
livetime	11097.927742797	Livetime [s]
ontime2	11237.058735847	Sum of GTIs [s]
ontime3	11240.135546088	Sum of GTIs [s]
ontime5	11240.217626095	Sum of GTIs [s]
ontime6	11240.176586092	Sum of GTIs [s]
ontime7	11240.258666098	Sum of GTIs [s]
ontime8	11240.094506085	Sum of GTIs [s]
l2events	133912	Number of level 2 events



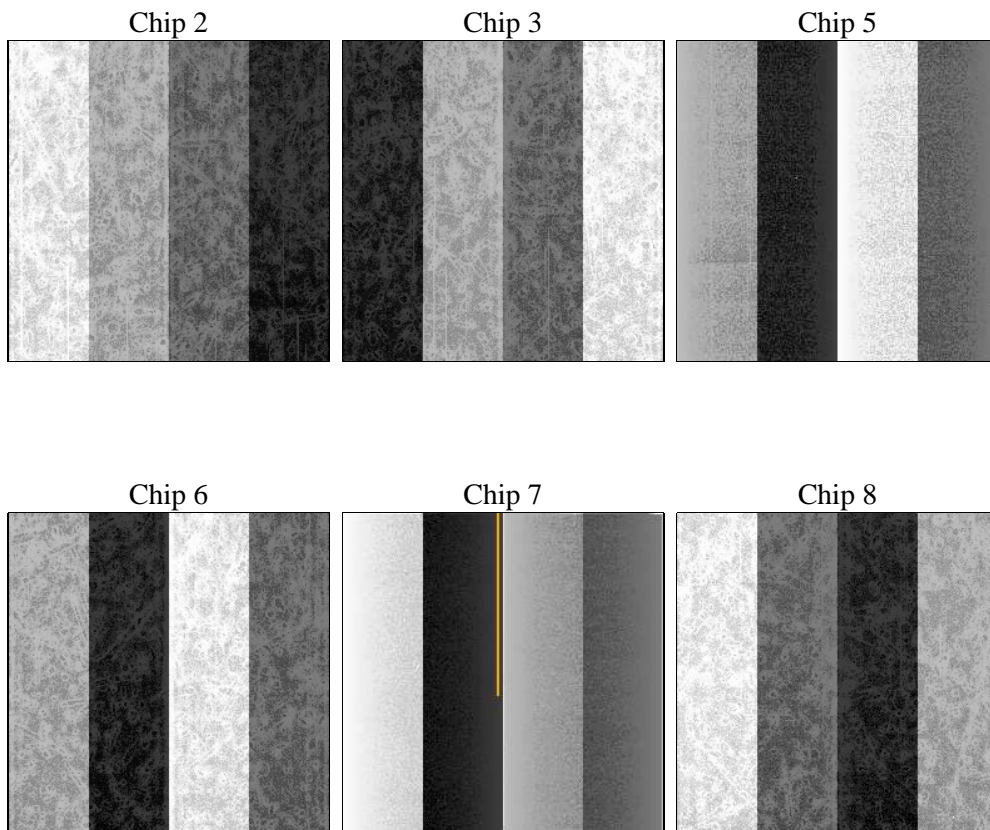
2 OBI

2.1 OBI

2.1.1 Images



2.1.2 Bias



2.1.3 Parameters

obi_num	0	Obi number	sched_exp_time	11200.000000	[s] Scheduled observation exposure time
ascdsver	8.4.4	Processing system revision	ontime	11240.258666098	Sum of GTIs [s]
caldbver	4.4.9	 	ontime2	11237.058735847	Sum of GTIs [s]
date	2012-05-10T22:00:15	Date and time of file creation	ontime3	11240.135546088	Sum of GTIs [s]
revision	2	Processing version of data	ontime5	11240.217626095	Sum of GTIs [s]
			ontime6	11240.176586092	Sum of GTIs [s]
			ontime7	11240.258666098	Sum of GTIs [s]
			ontime8	11240.094506085	Sum of GTIs [s]
			l1events	613725	Number of level 1 events

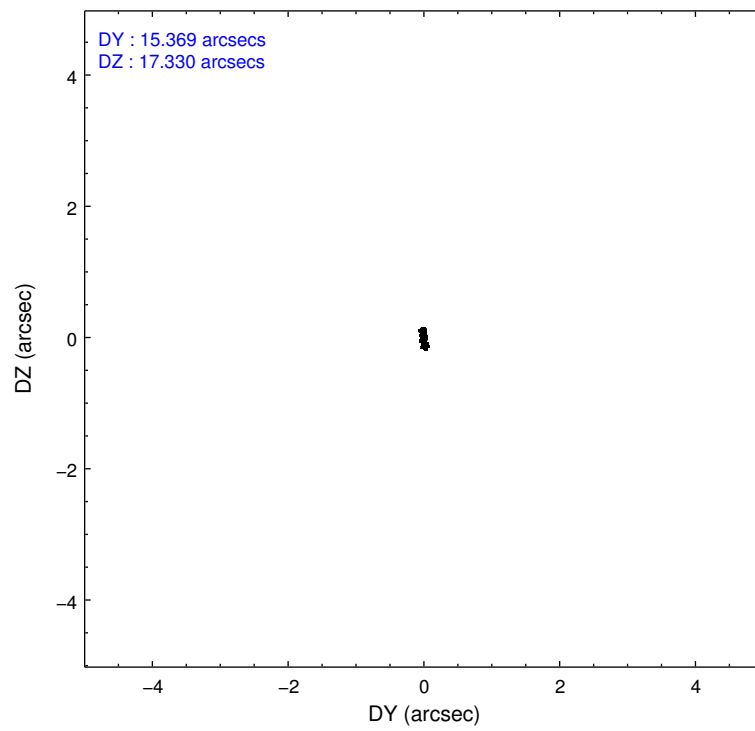
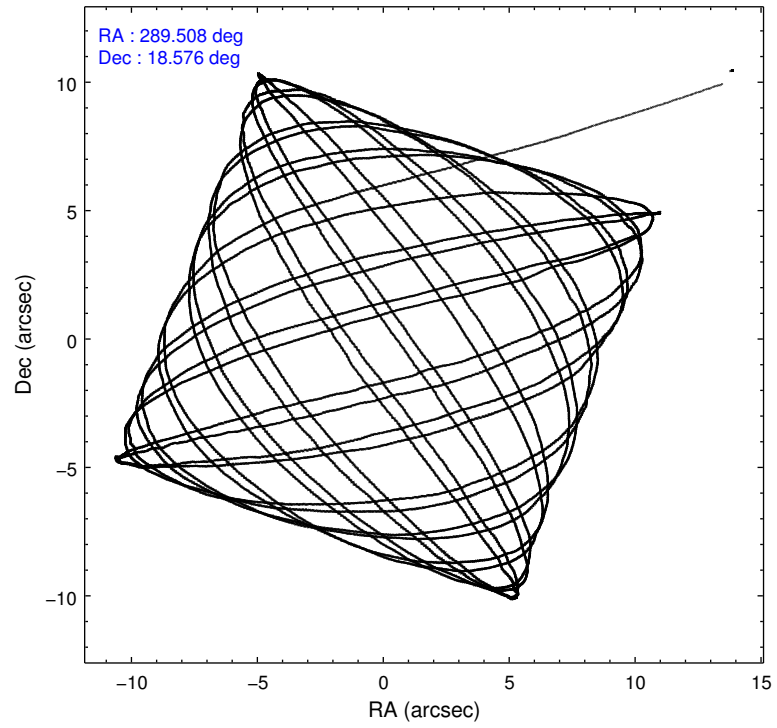
2.1.4 Events

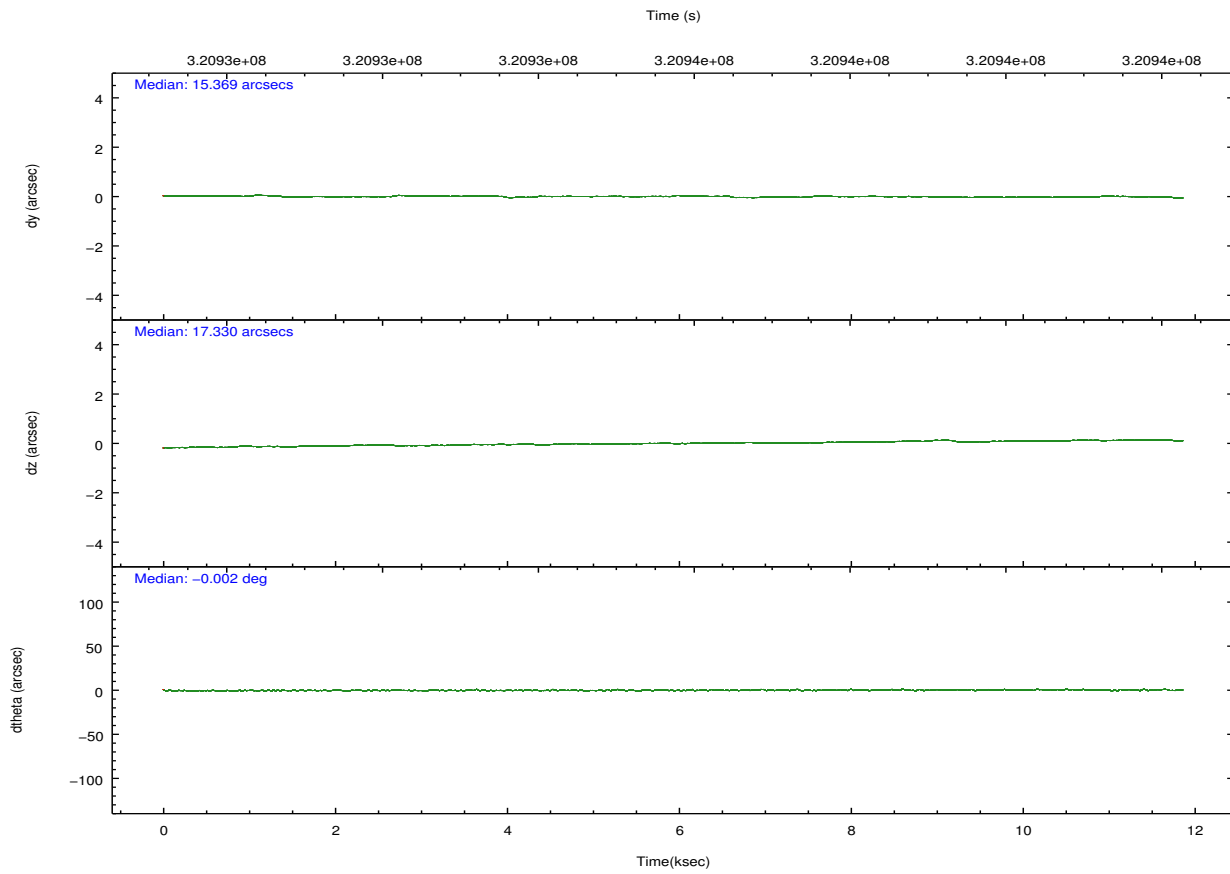
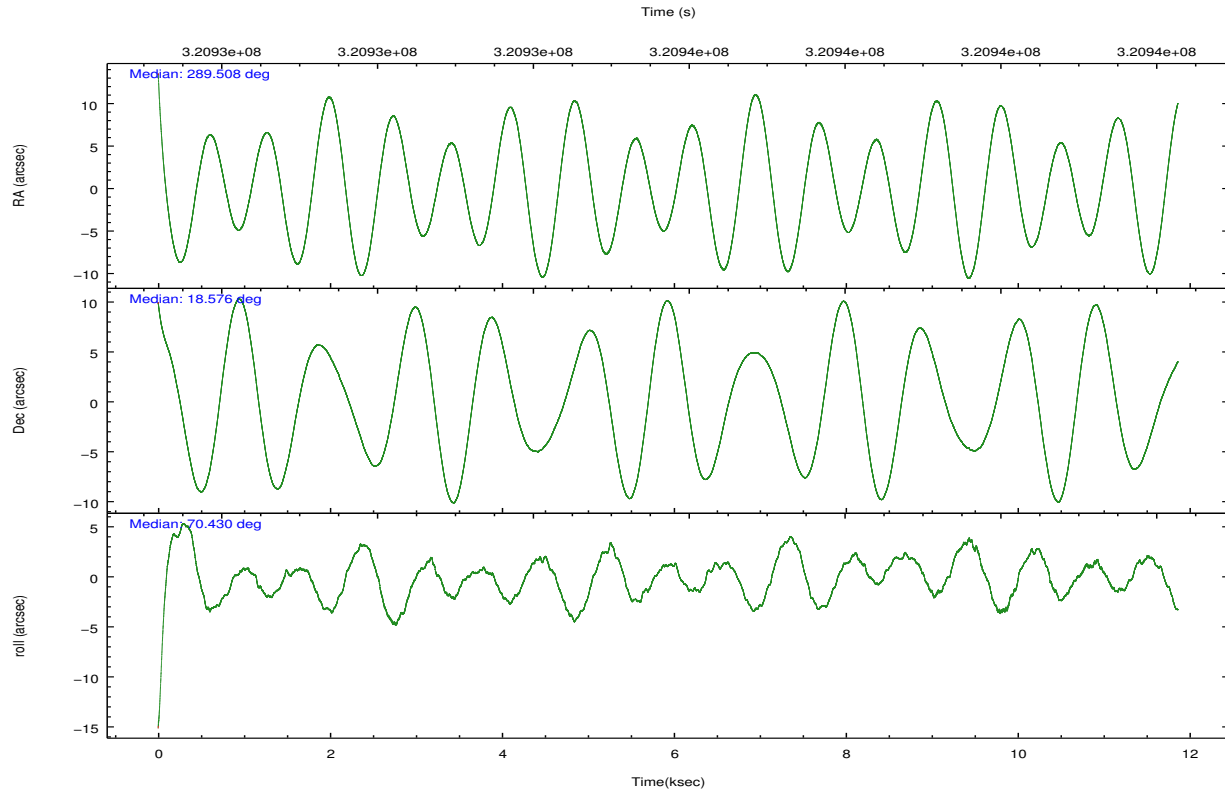
	ccd 2	ccd 3	ccd 5	ccd 6	ccd 7	ccd 8		ccd 2	ccd 3	ccd 5	ccd 6	ccd 7	ccd 8
level 1 events	94432	88709	129635	90077	98521	112351	grade 0 events	3054	3045	10711	3249	4196	8069
rejected events	85616	80290	62542	80629	53321	84634		3%	3%	8%	3%	4%	7%
rejected %	90%	90%	48%	89%	54%	75%	grade 1 events	56	51	250	40	109	107
								0%	0%	0%	0%	0%	0%
							grade 2 events	2251	1829	19432	2179	9152	6342
								2%	2%	14%	2%	9%	5%
							grade 3 events	947	952	2430	983	4180	2899
								1%	1%	1%	1%	4%	2%
							grade 4 events	959	969	2544	987	4069	2749
								1%	1%	1%	1%	4%	2%
							grade 5 events	2995	3511	9628	3547	10223	5257
								3%	3%	7%	3%	10%	4%
							grade 6 events	1612	1626	32018	2056	23620	7679
								1%	1%	24%	2%	23%	6%
							grade 7 events	82558	76726	52622	77036	42972	79249
								87%	86%	40%	85%	43%	70%

2.2 Compared Parameters

Parameter	Planned	Actual	Parameter	Planned	Actual
Instrument	ACIS	ACIS	Obspar format version number	7	7
Detector	ACIS-235678	ACIS-235678	Obspar file type	PREDICTED	ACTUAL
Grating	NONE	NONE	Obspar update status	NONE	UPDATED
Data mode	VFAINT	VFAINT	CCD I0 on	N	N
Observation mode	POINTING	POINTING	CCD I1 on	N	N
[deg] Pointing RA	289.513293	289.5076483005086	CCD I2 on	O1	Y
[deg] Pointing Dec	18.549587	18.5763961416046	CCD I3 on	O2	Y
[deg] Pointing Roll	70.278882	70.43729499815274	CCD S0 on	N	N
[mm] SIM focus pos	-0.684267	-0.6828225247311905	CCD S1 on	Y	Y
[mm] SIM defocus	0	0.001444936568705701	CCD S2 on	Y	Y
[mm] SIM translation stage pos	-190.132523	-190.1425803651734	CCD S3 on	Y	Y
[mm] SIM translation stage offset	0	0.01005778216563158	CCD S4 on	Y	Y
[s] Observation start time (MET)	320930450.184000	320929206.02713	CCD S5 on	N	N
Observation start date	2008-03-03T11:19:45	2008-03-03T11:00:06	Number of optional ACIS chips dropped	0	0
[s] Observation end time (MET)	320941650.184000	320942513.09028	On-chip summing requested	N	N
Observation end date	2008-03-03T14:26:25	2008-03-03T14:41:53	Subarray requested	NONE	NONE
Read mode	TIMED	TIMED	Alternating exposures requested	N	N
			[s] Primary exposure time	0.000000	3.2

2.3 Aspect



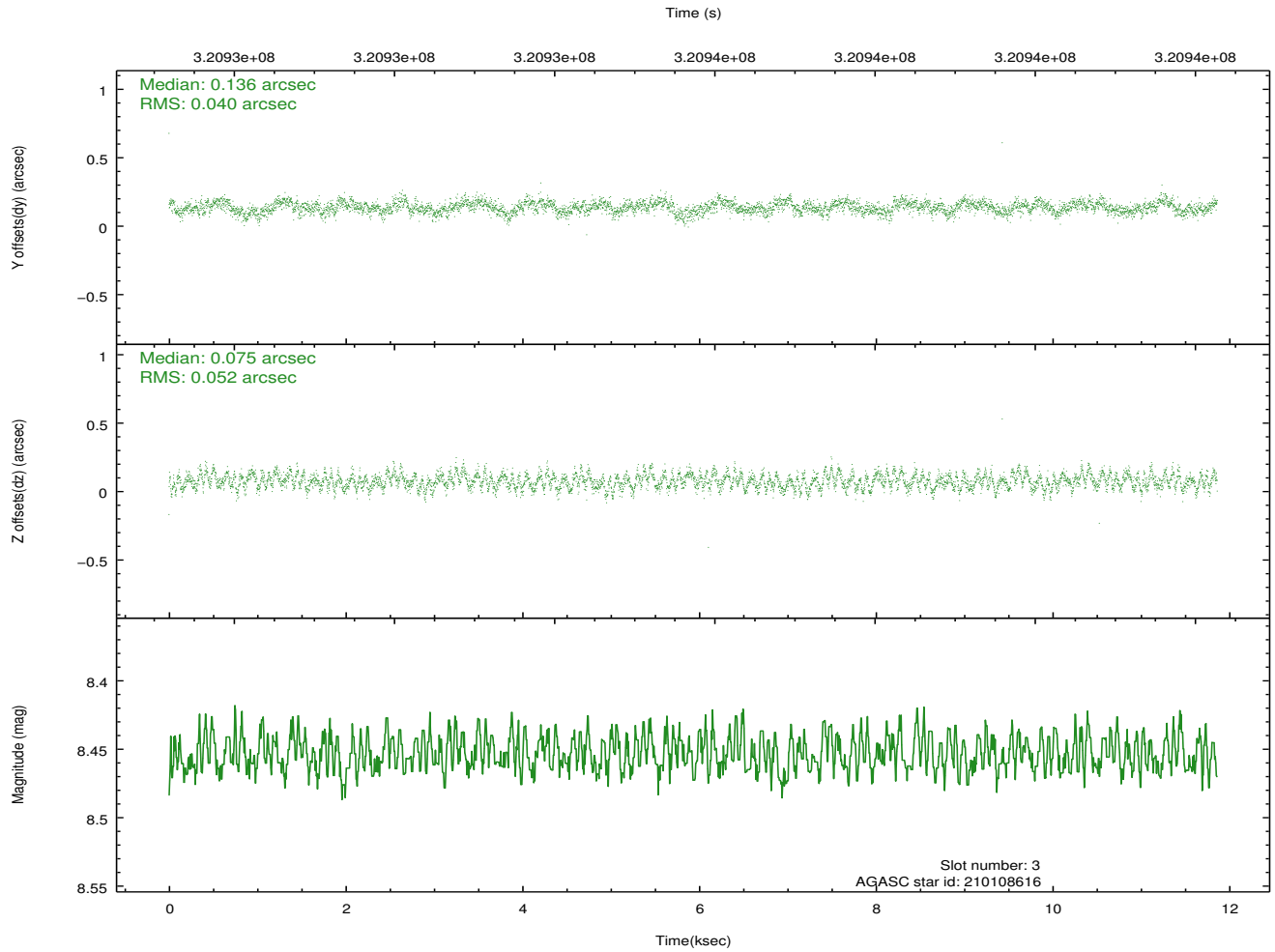
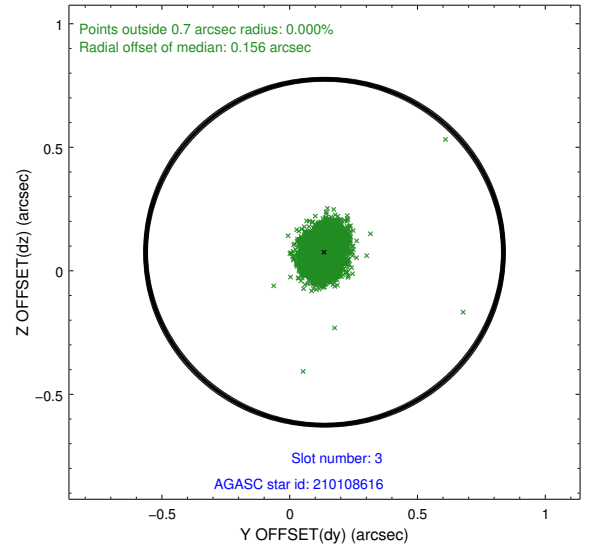
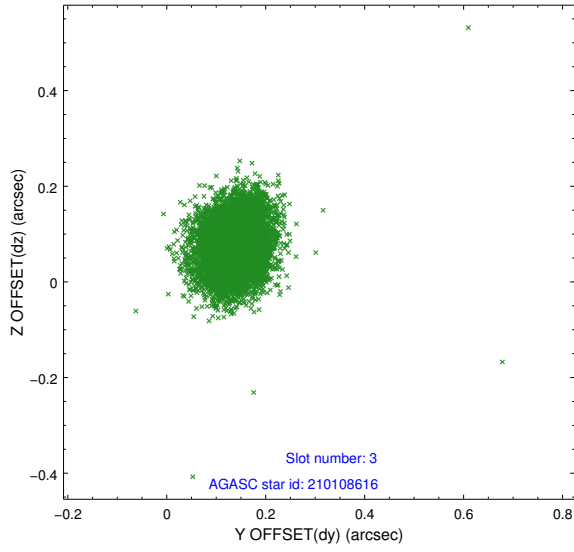


Slot Statistics

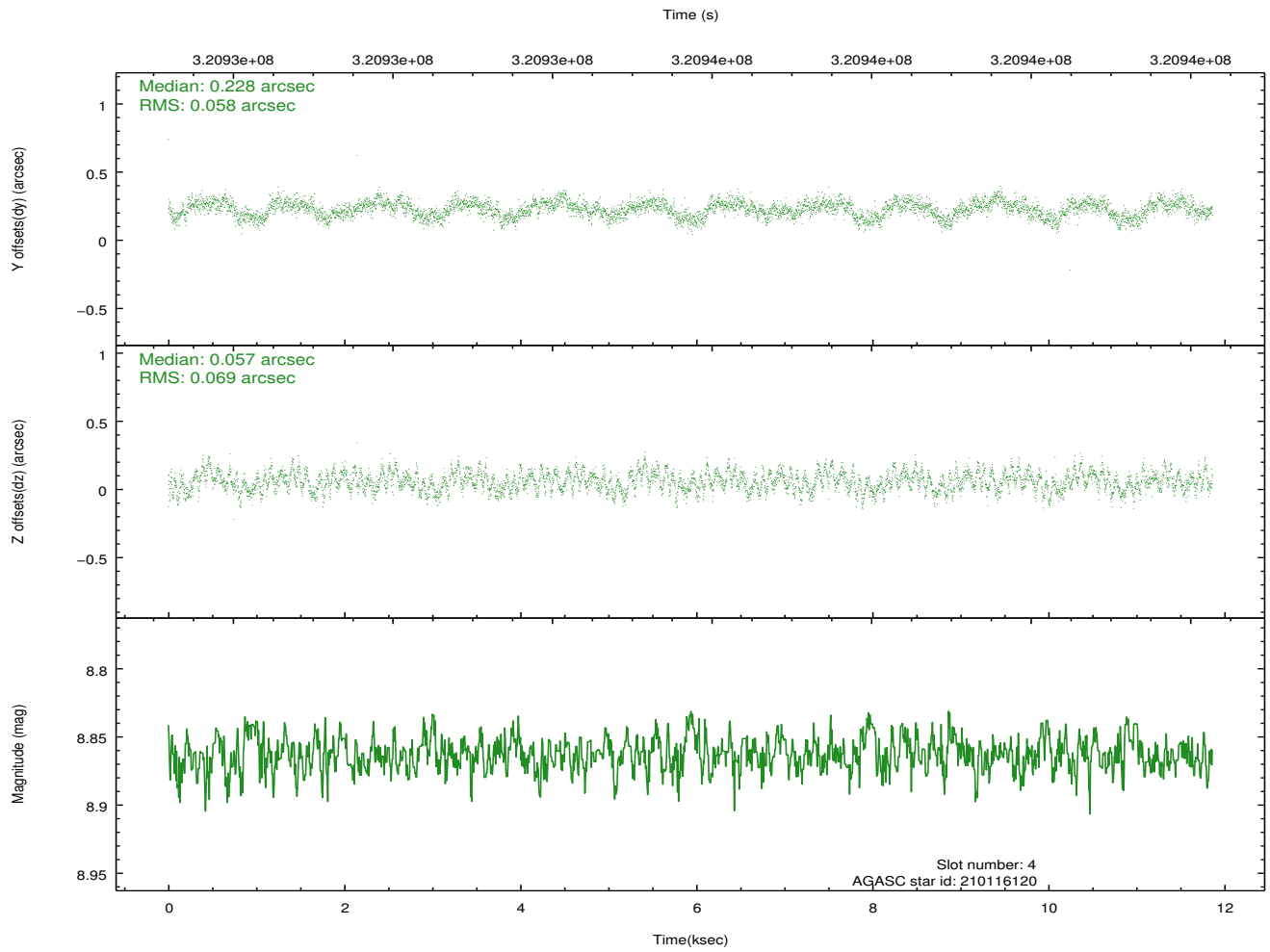
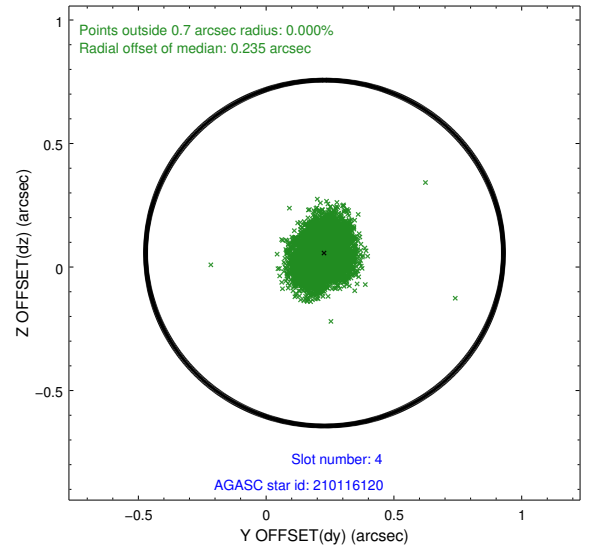
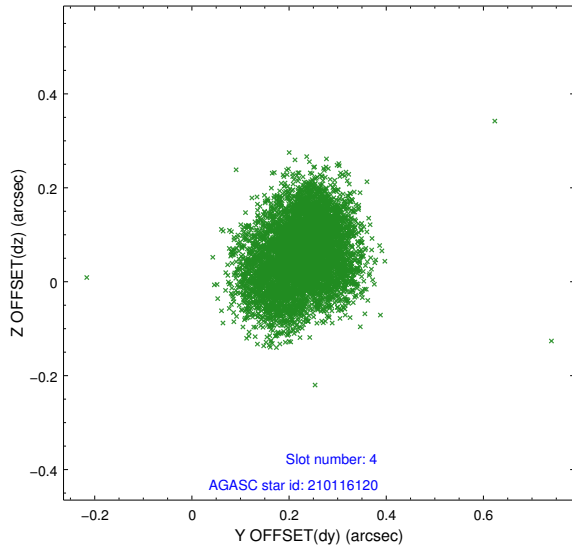
slot	status	id	mag	n_pts	med_dy	med_dz	dr1	dr2	ra	dec	mean_y	mean_z
0	FID	ACIS-S-2	7.09	2894	-0.072	-0.051	0.007	0.012	0.000000	0.000000	-768.47	-1738.75
1	FID	ACIS-S-4	7.19	2894	0.163	0.049	0.005	0.010	0.000000	0.000000	2144.90	169.32
2	FID	ACIS-S-5	7.22	2894	-0.122	0.012	0.007	0.011	0.000000	0.000000	-1820.77	163.54
3	GUIDE	210108616	8.45	5788	0.136	0.075	0.069	0.110	289.874025	18.103348	-1093.84	-1703.60
4	GUIDE	210116120	8.86	5784	0.228	0.057	0.098	0.149	289.715117	18.077443	-1365.90	-1224.05
5	GUIDE	210243704	8.68	5787	-0.064	0.117	0.070	0.115	290.135079	18.526410	641.57	-2024.81
6	GUIDE	210644240	7.15	5785	-0.161	-0.229	0.066	0.106	289.202469	18.976317	1089.67	1514.24
7	GUIDE	210767040	8.73	5769	-0.133	-0.018	0.087	0.144	290.235424	18.885989	1975.44	-1904.56

2.4 Star Slots

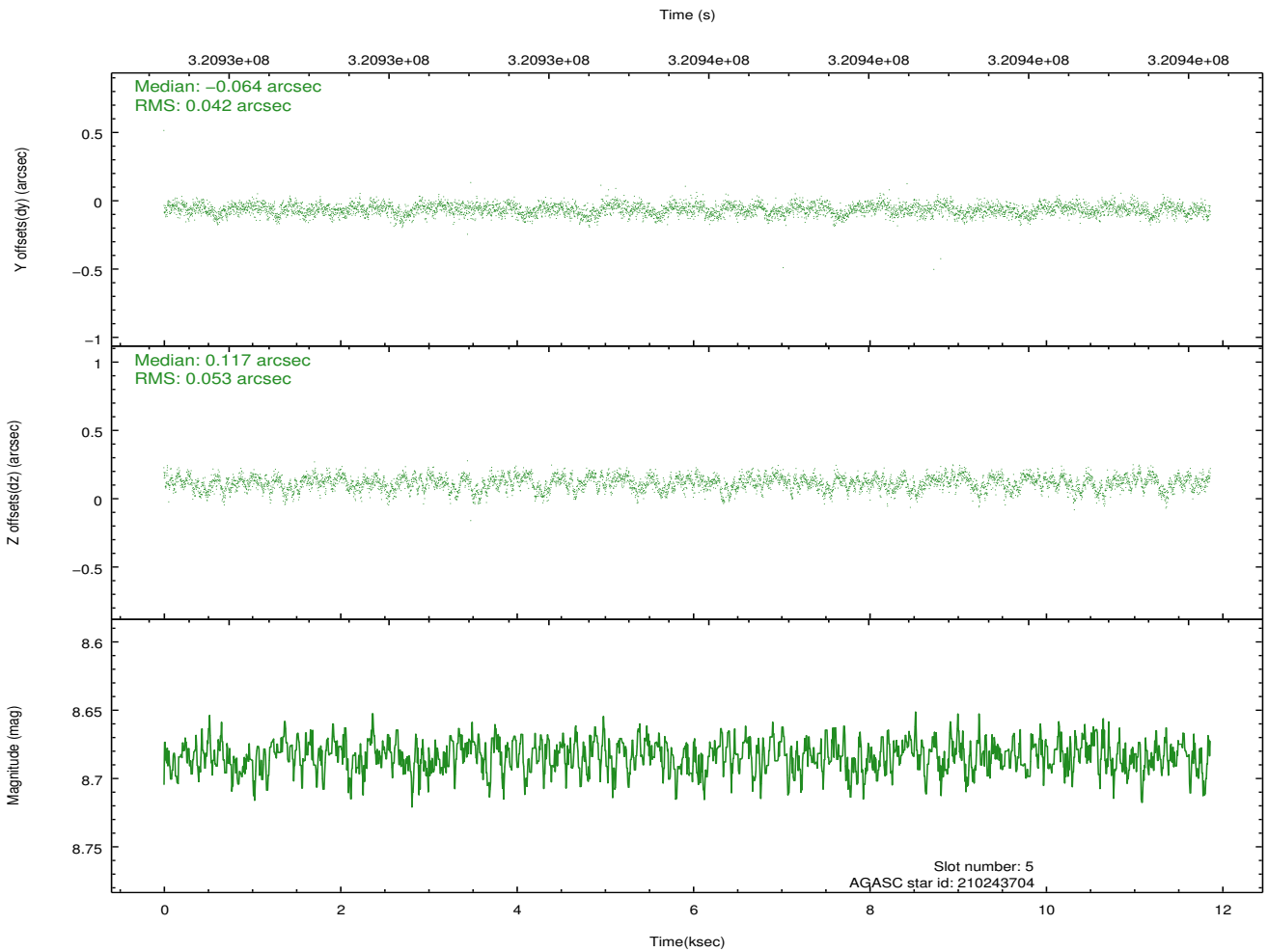
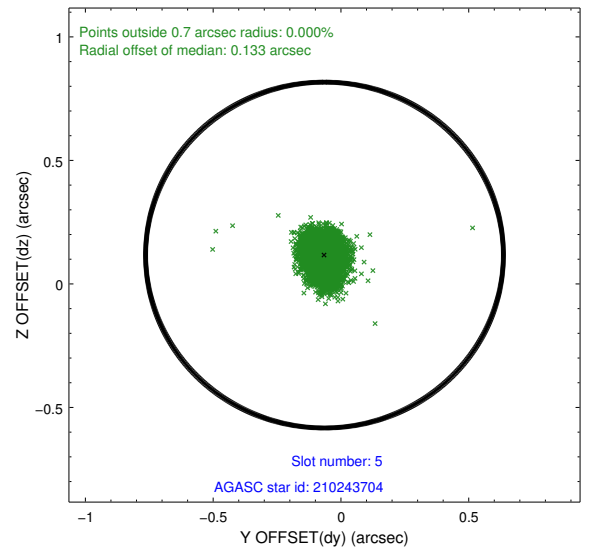
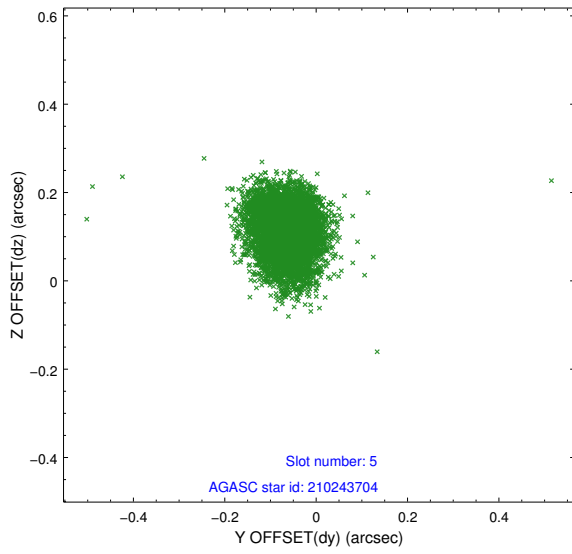
2.4.1 Slot 3



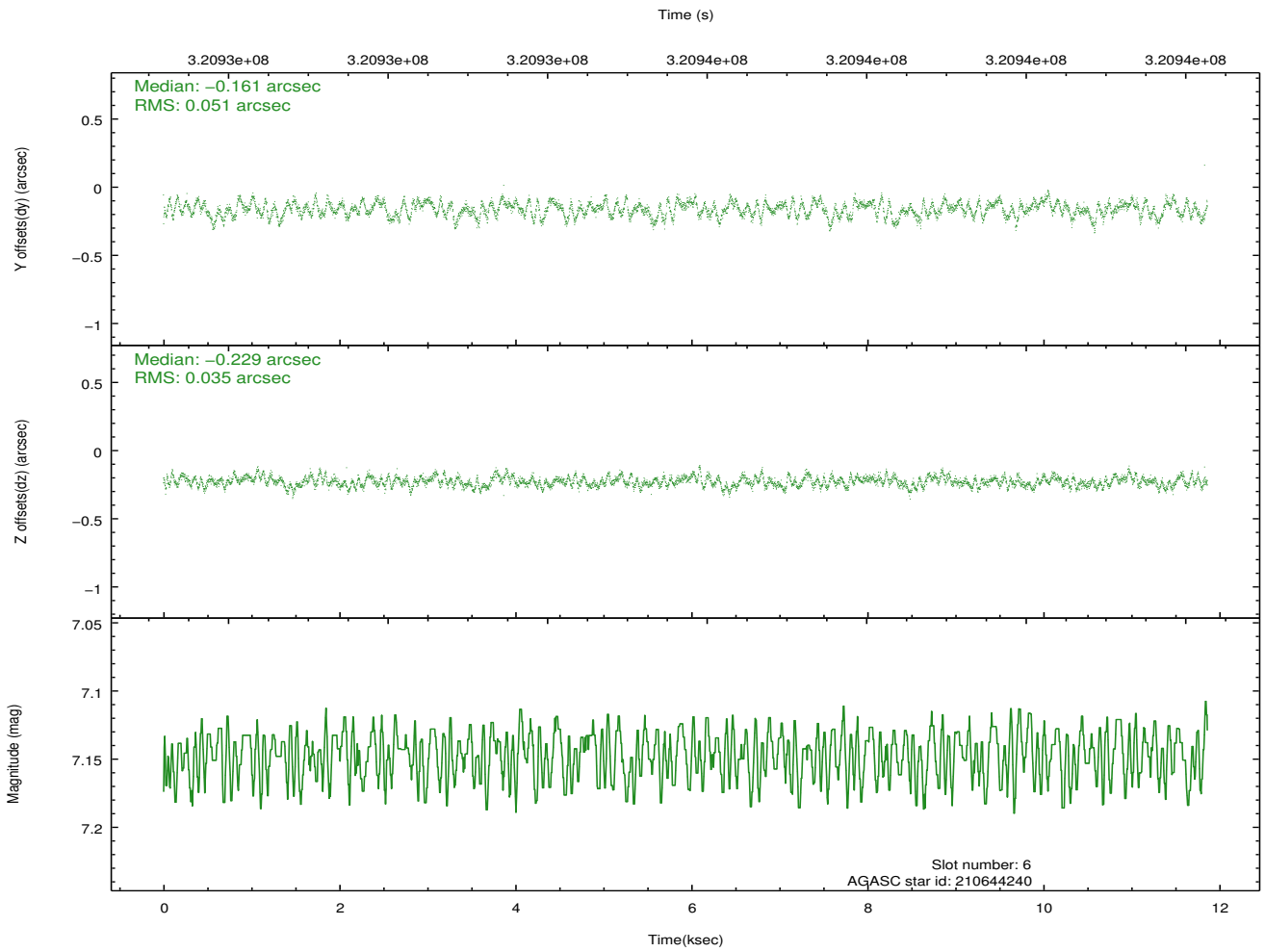
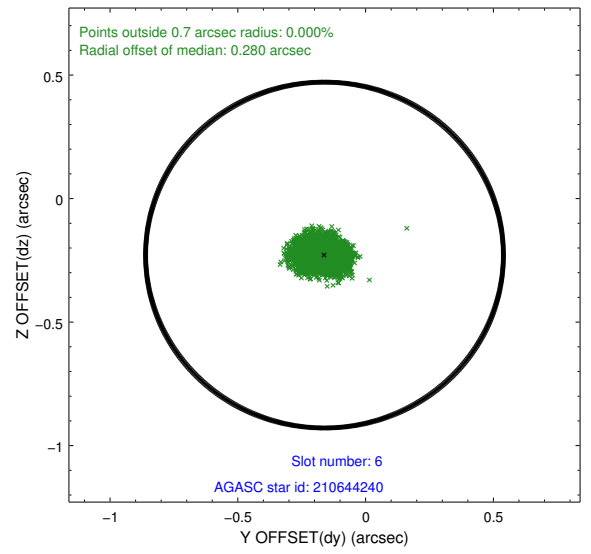
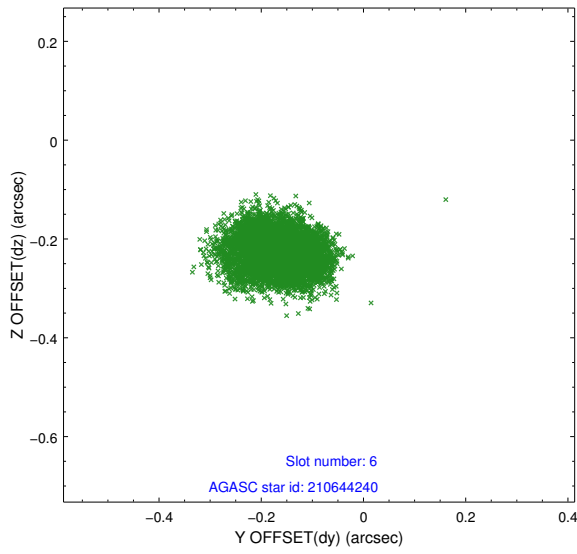
2.4.2 Slot 4



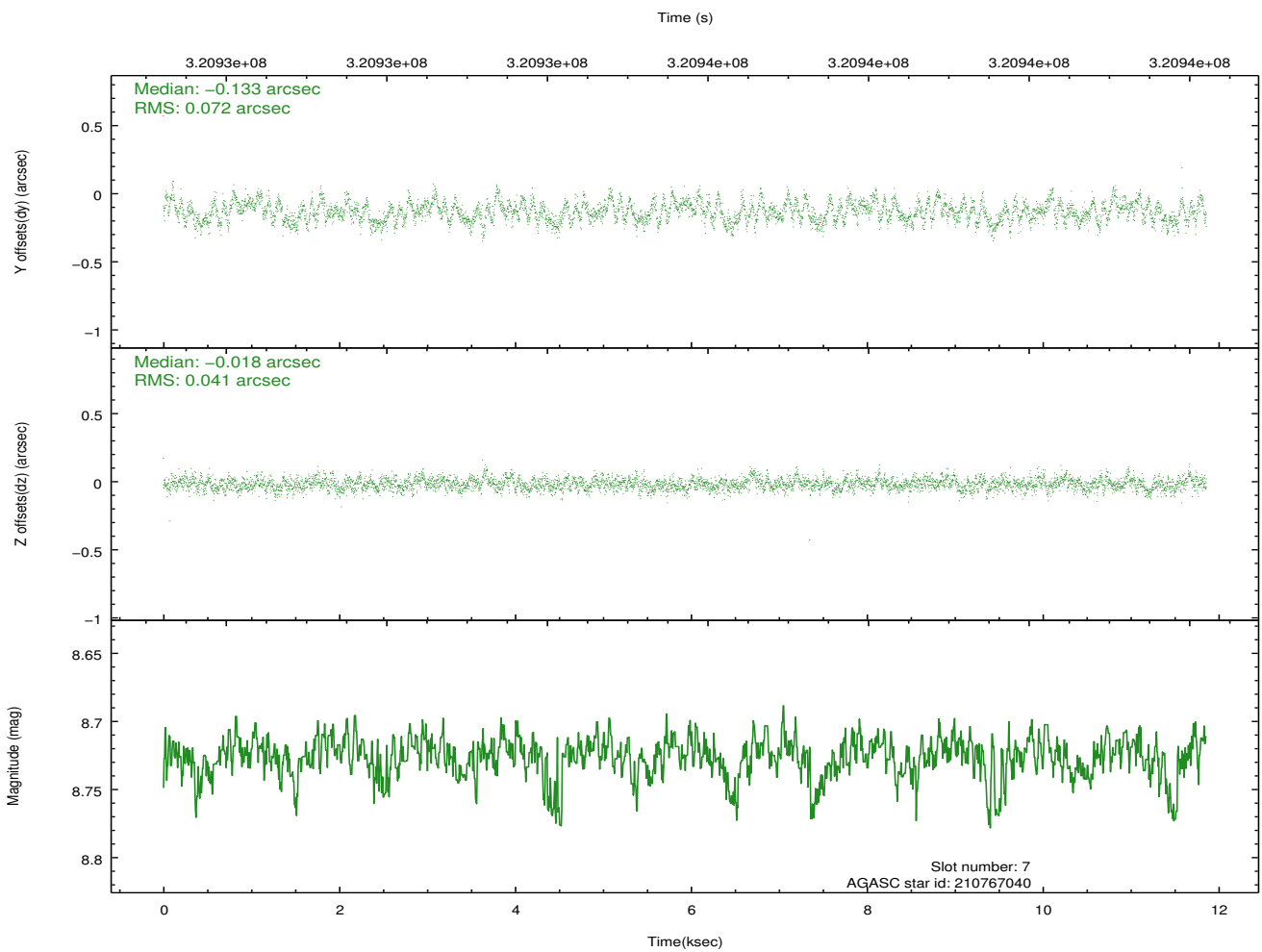
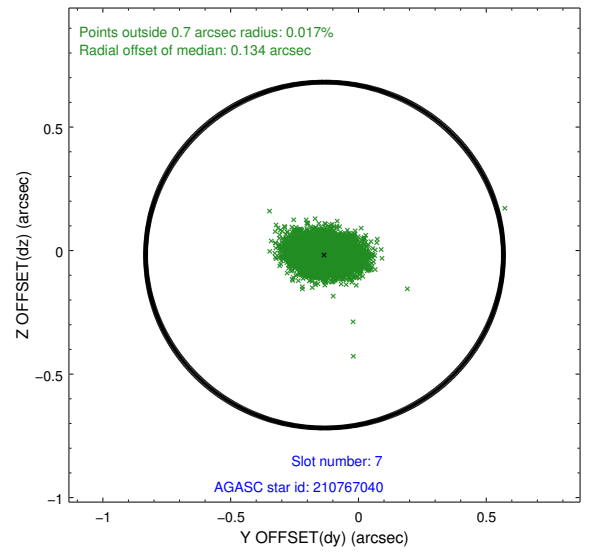
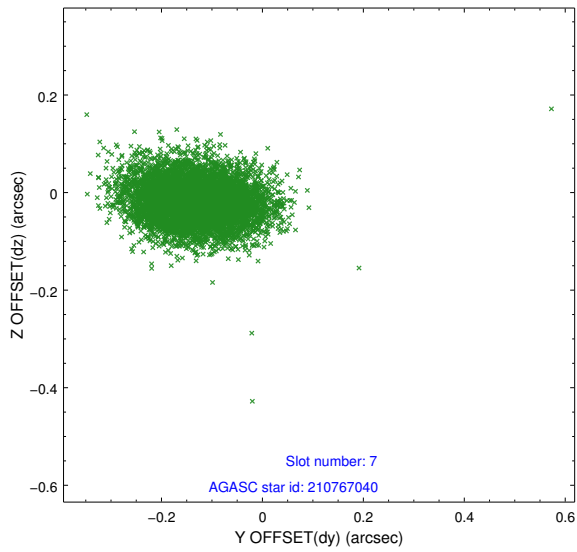
2.4.3 Slot 5



2.4.4 Slot 6

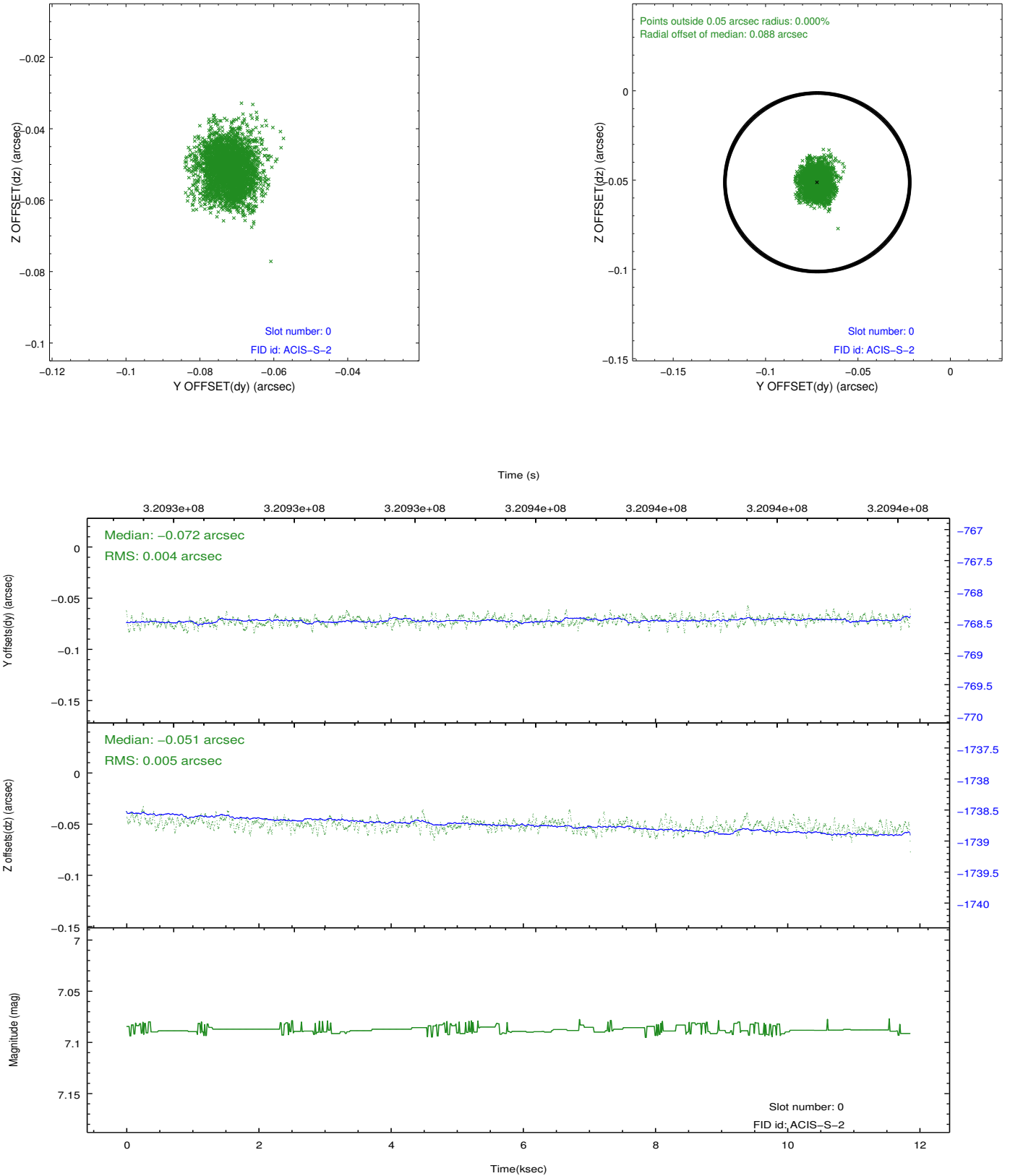


2.4.5 Slot 7

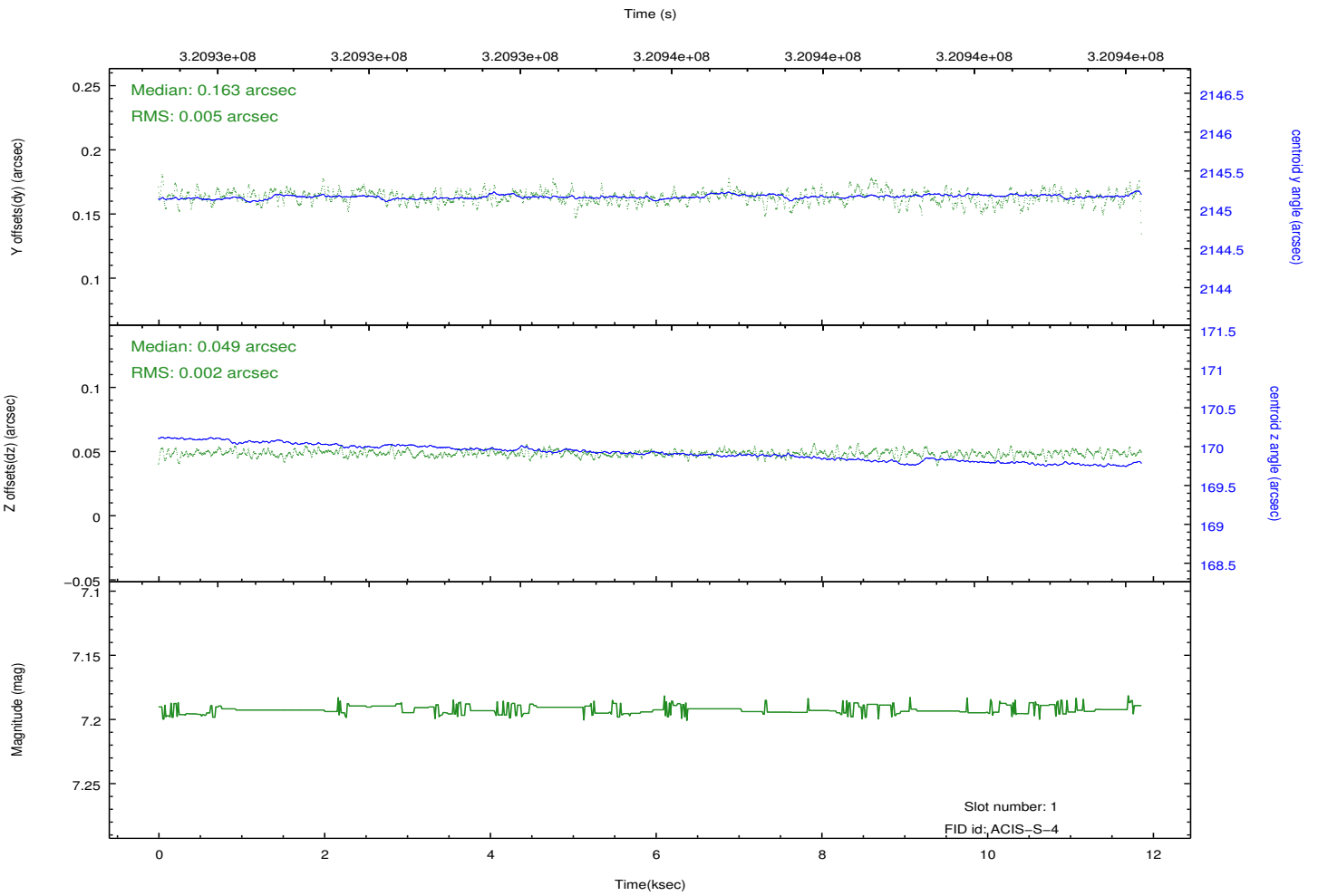
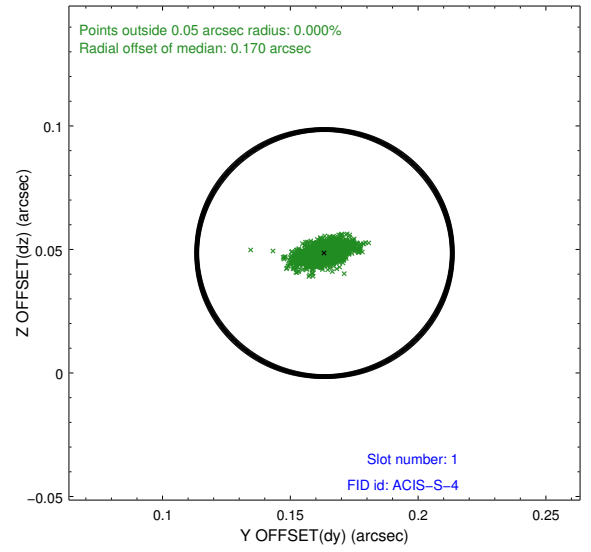
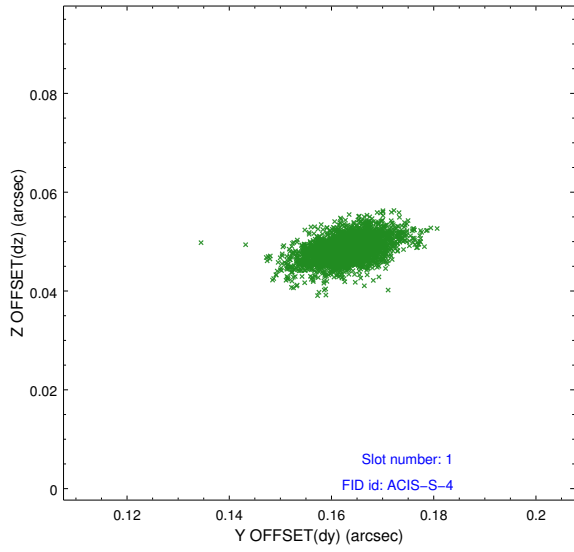


2.5 FID Slots

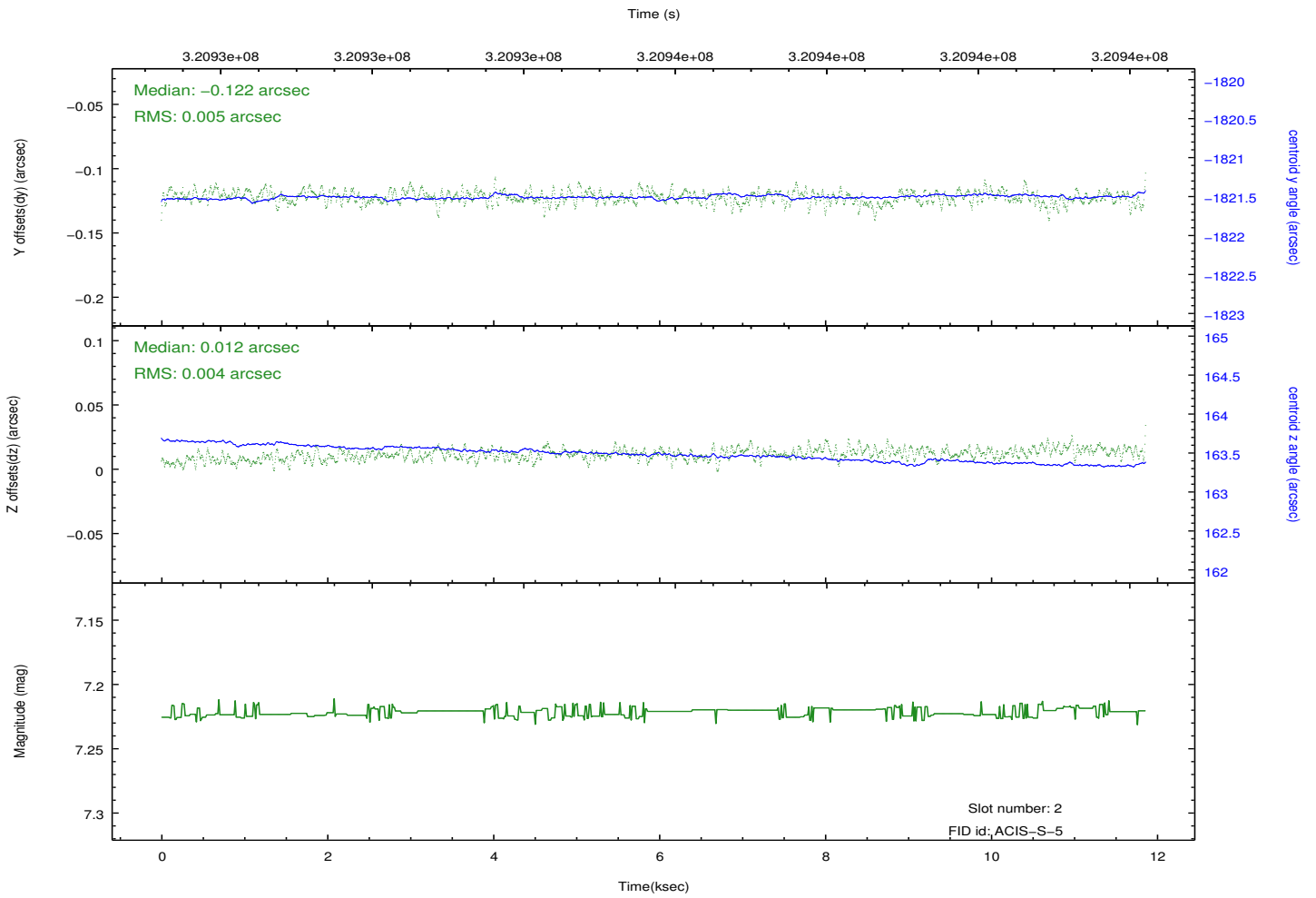
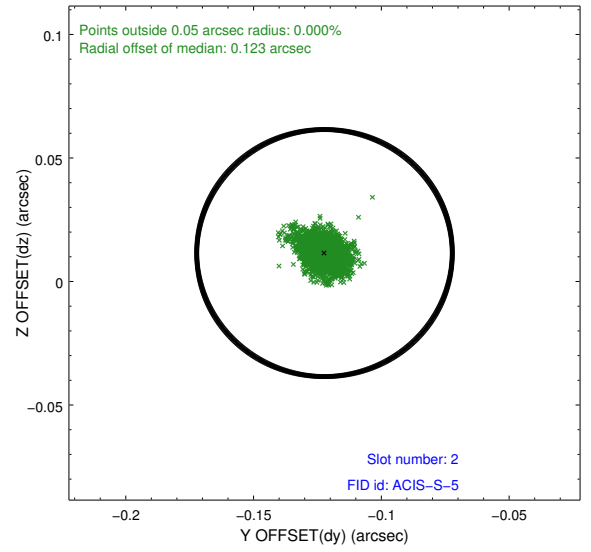
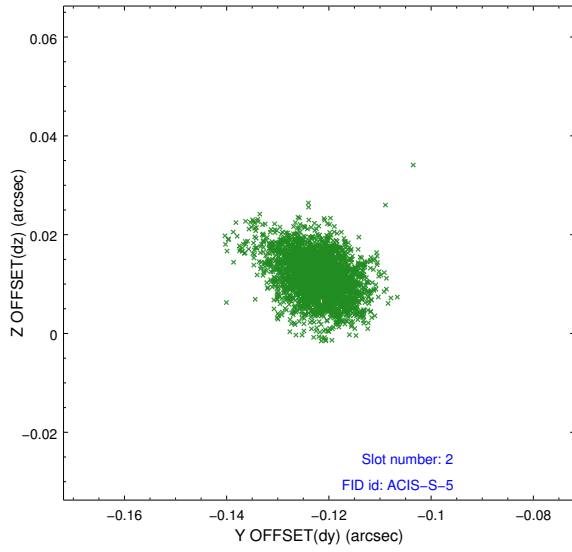
2.5.1 Slot 0



2.5.2 Slot 1



2.5.3 Slot 2



A Summary

A.1 Status

V&V Scientist	Jen Lauer
V&V Date (YYYY-MM-DD)	2012.05.14
V&V Edition	1
V&V Disposition and Status	OK
V&V Charge Time	11.2415999

A.2 Comments