

V&V Reference Report

L2 ASCDS Version : 8.4.4

Observation 9085 - L2 Version 3
Chandra X-Ray Center

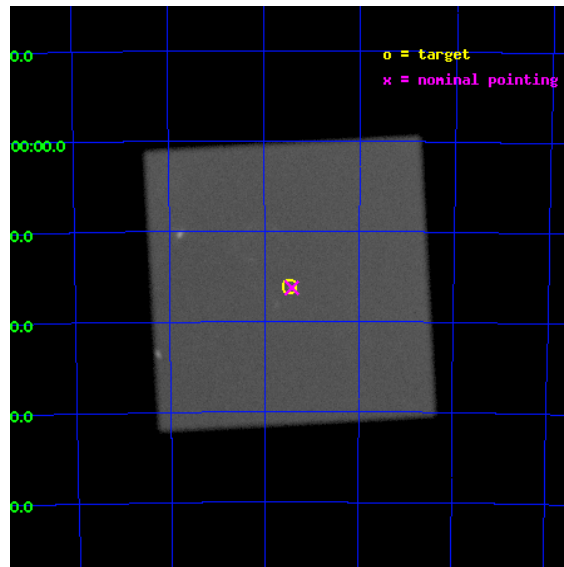
L2 Processing Date : Aug 12 2012

Contents

1	Front	2
2	OBI	3
2.1	OBI	3
2.1.1	Images	3
2.1.2	Parameters	4
2.1.3	Events	4
2.2	Compared Parameters	5
2.3	Aspect	6
2.4	Star Slots	9
2.4.1	Slot 3	9
2.4.2	Slot 4	10
2.4.3	Slot 5	11
2.4.4	Slot 6	12
2.4.5	Slot 7	13
2.5	FID Slots	14
2.5.1	Slot 0	14
2.5.2	Slot 1	15
2.5.3	Slot 2	16
A	Summary	17
A.1	Status	17
A.2	Comments	17

1 Front

seq_num	500948	Sequence number
obs_id	9085	Observation id
title	High Resolution HRC Imaging of Supernova Remnant 1987A	Proposal ti
observer	Dr. Stephen Murray	Principal investigator
object	SN 1987A	Source name
ra_targ	83.866667	Observer's specified target RA [deg]
dec_targ	-69.269722	Observer's specified target Dec [deg]
ra_nom	83.855482048678	Nominal RA [deg]
dec_nom	-69.271165879056	Nominal Dec [deg]
roll_nom	221.89404761038	Nominal Roll [deg]
revision	3	Processing version of data
ontime	33794.507896185	[s]
livetime	33435.270567483	Overtime multiplied by DTCOR
l2events	2223595	Number of level 2 events

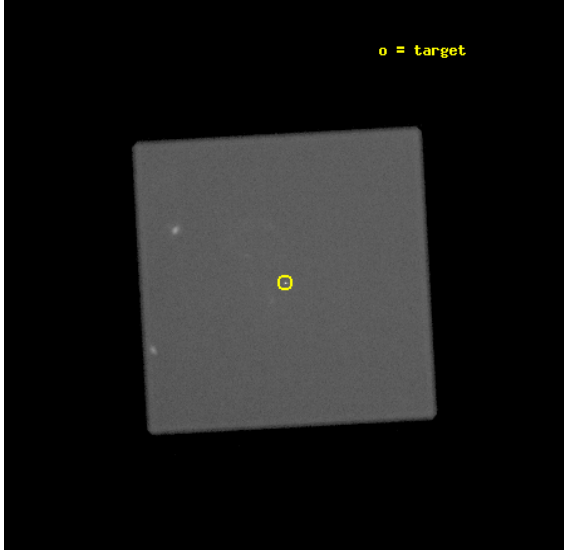


2 OBI

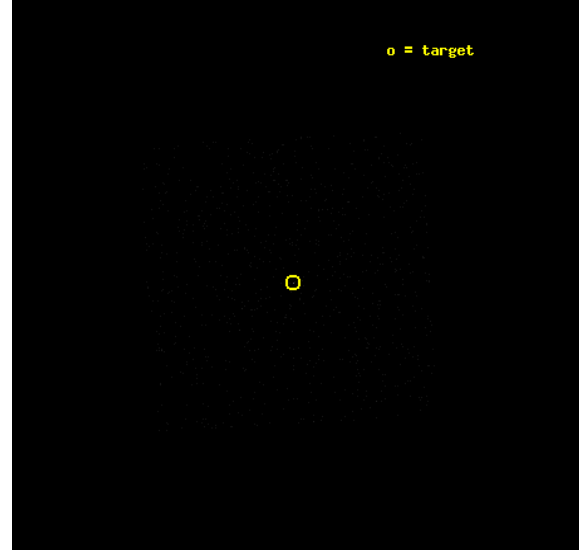
2.1 OBI

2.1.1 Images

Level 1 Image



Level 1 Bad Events



2.1.2 Parameters

obi_num	0	Obi number	sched_exp_time	34000.000000	[s] Scheduled observation exposure time
ascdsver	8.4.5	Processing system revision	ontime	33794.507896185	[s]
caldbver	4.5.1.1	 	l1events	3217087	Number of level 1 events
date	2012-08-12T11:34:43	Date and time of file creation			
revision	3	Processing version of data			

2.1.3 Events

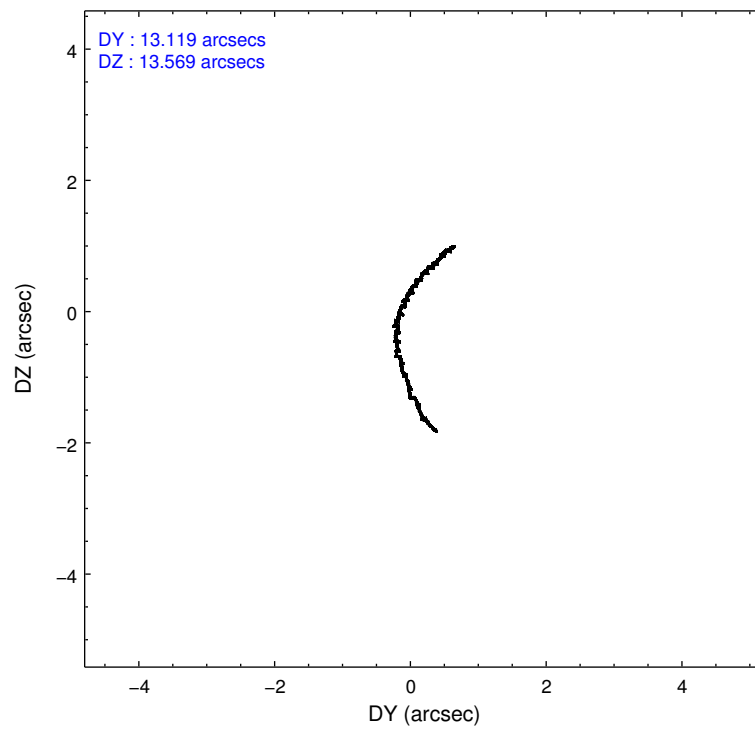
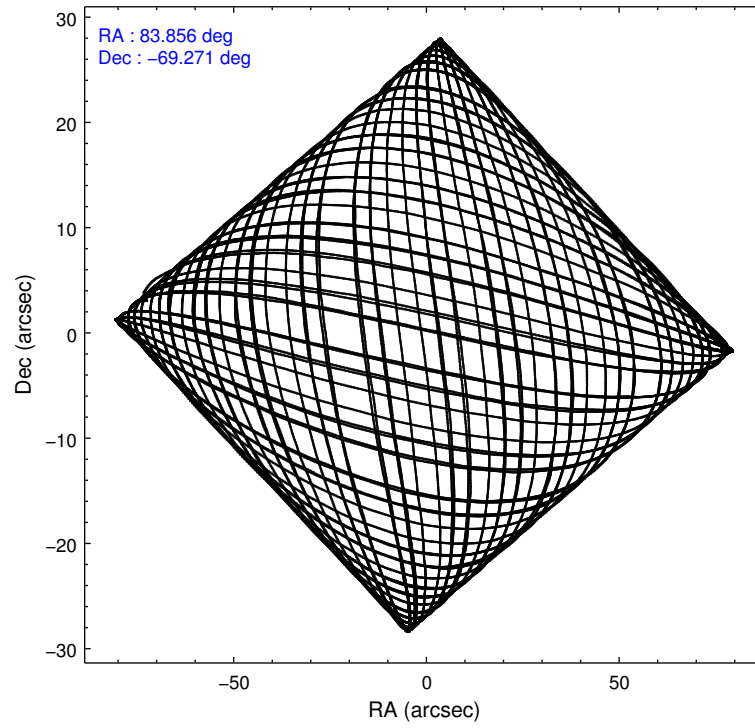
Level 1 Events

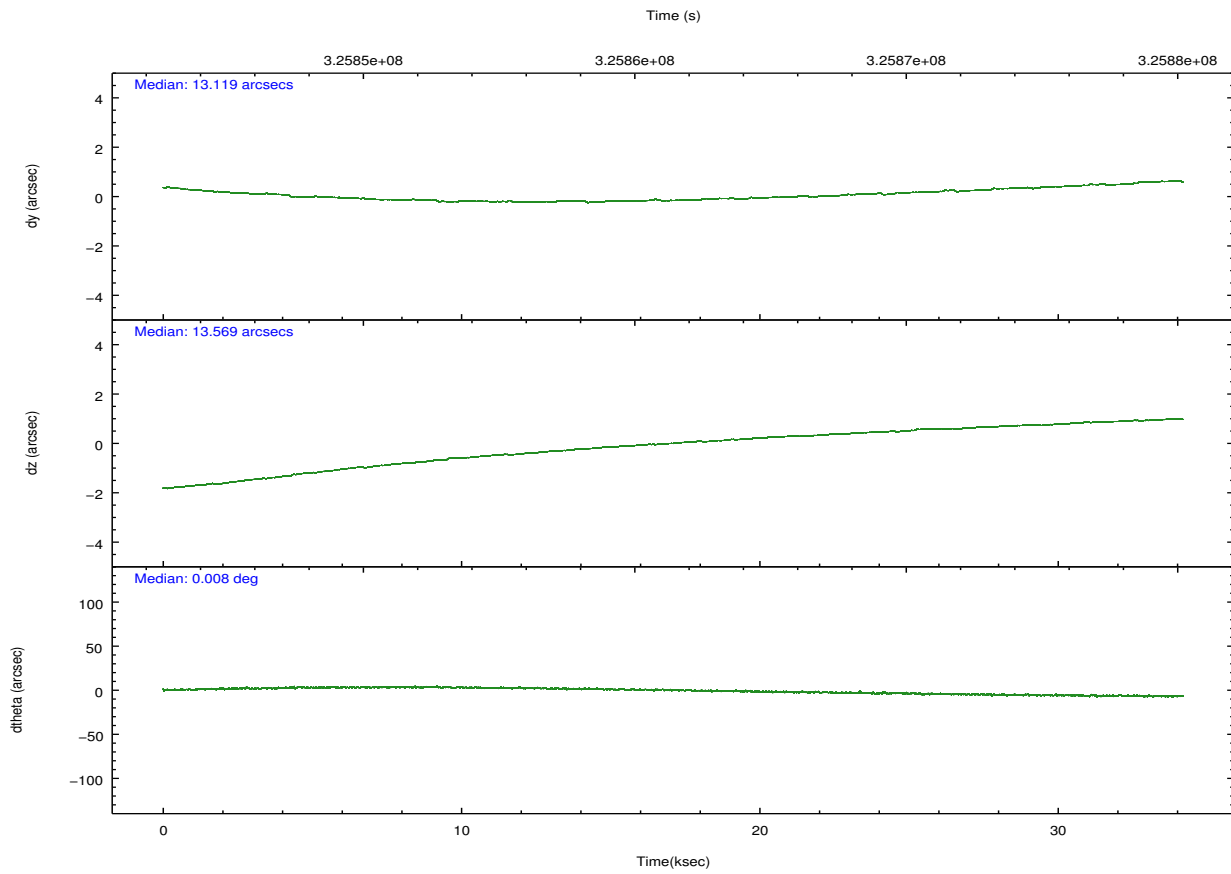
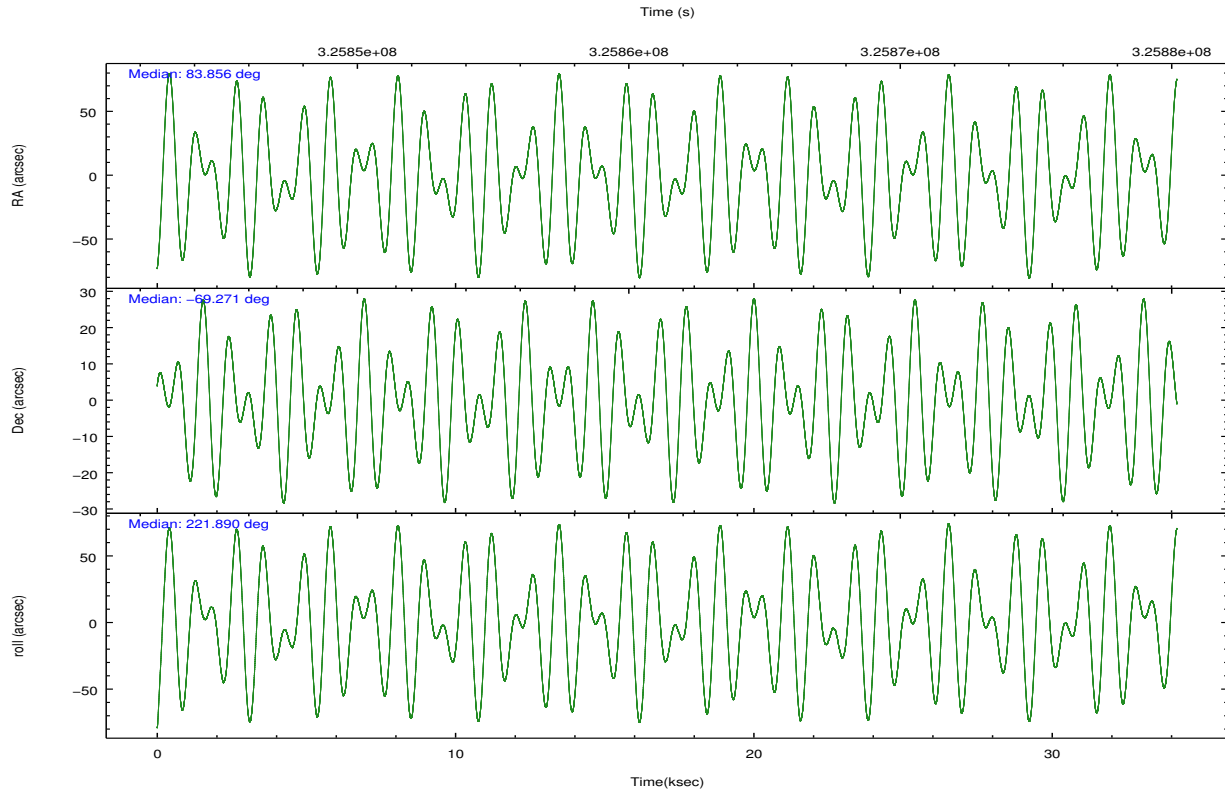
	segment 0
level 1 events	3217087
rejected events	10130
rejected %	0%

2.2 Compared Parameters

Parameter	Planned	Actual	Parameter	Planned	Actual
Instrument	HRC	HRC	Obspar format version number	7	7
Detector	HRC-I	HRC-I	Obspar file type	PREDICTED	ACTUAL
Grating	NONE	NONE	Obspar update status	NONE	UPDATED
Data mode	OBSERVING	OBSERVING			
Observation mode	POINTING	POINTING			
[deg] Pointing RA	83.877625	83.85548204867833			
[deg] Pointing Dec	-69.245141	-69.27116587905559			
[deg] Pointing Roll	222.010250	221.8940476103849			
[mm] SIM focus pos	-1.040293	-1.038866356238299			
[mm] SIM defocus	0	0.001426264420575141			
[mm] SIM translation stage pos	126.985494	126.9854943052878			
[mm] SIM translation stage offset	0	-5.413686238853188e-06			
[s] Observation start time (MET)	325844501.184000	325843498.04128			
Observation start date	2008-04-29T08:20:36	2008-04-29T08:04:58			
[s] Observation end time (MET)	325878501.184000	325879470.41803			
Observation end date	2008-04-29T17:47:16	2008-04-29T18:04:30			

2.3 Aspect



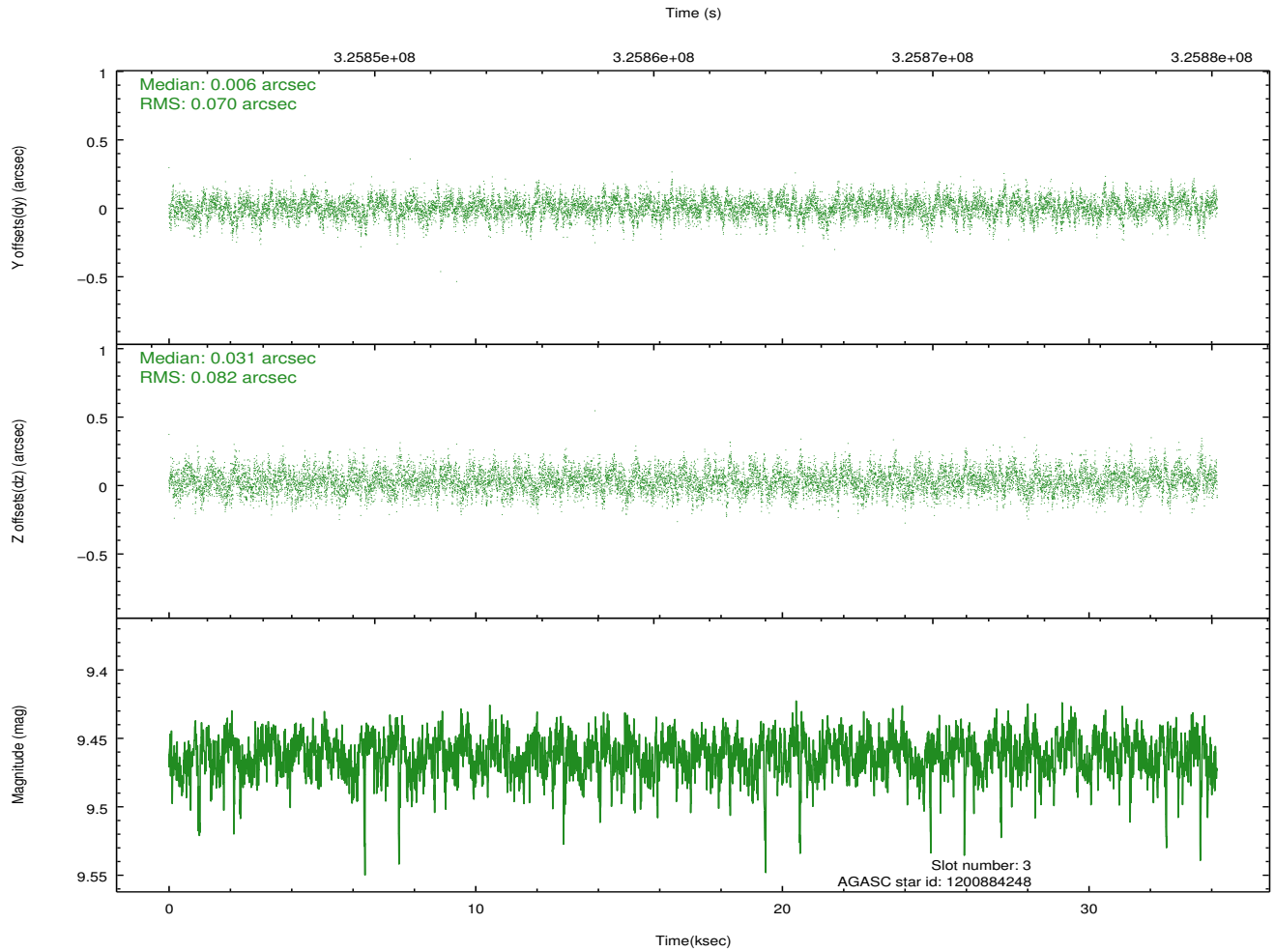
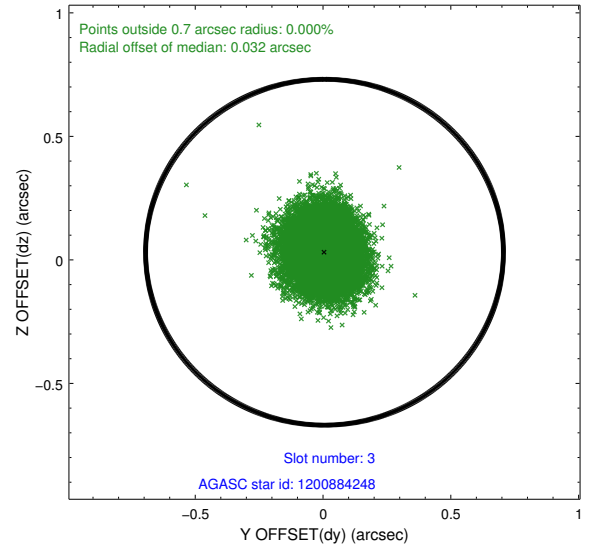
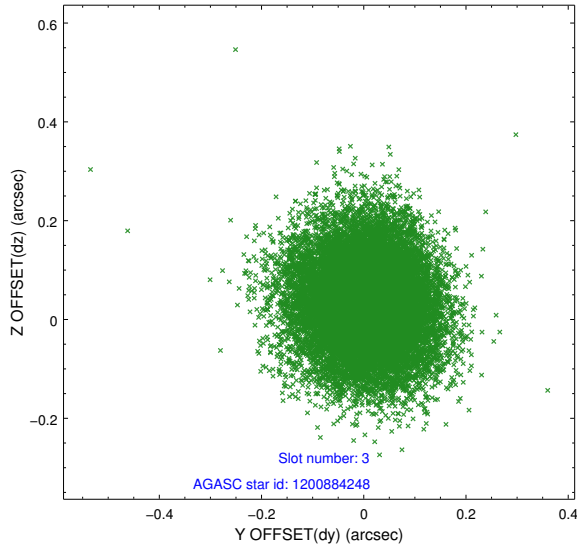


Slot Statistics

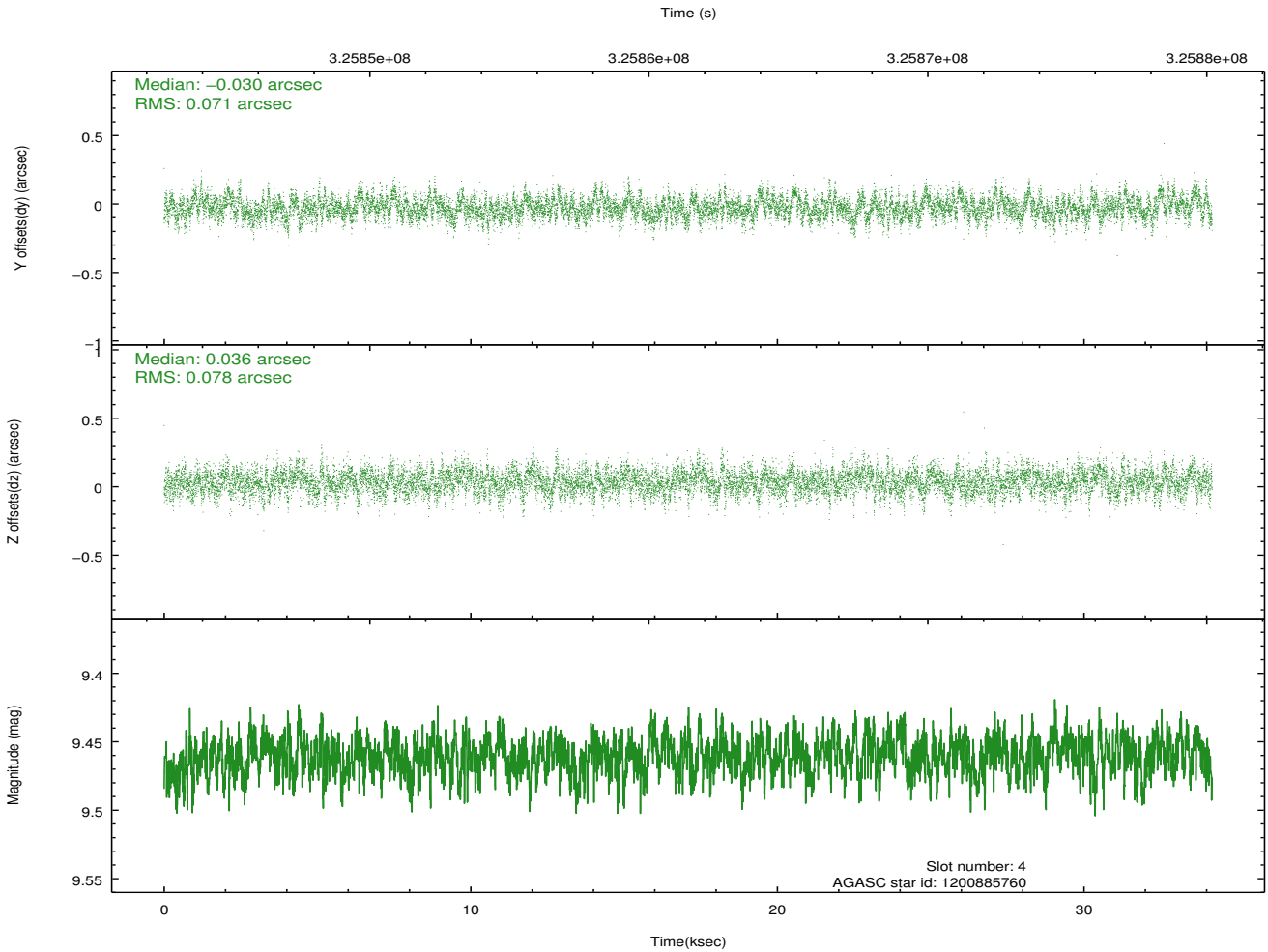
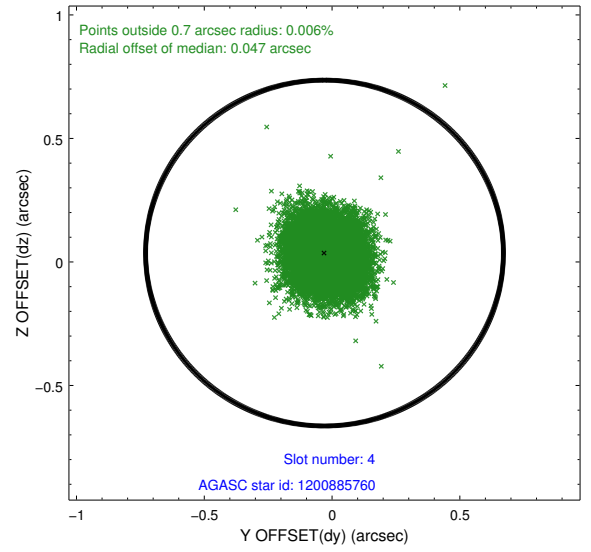
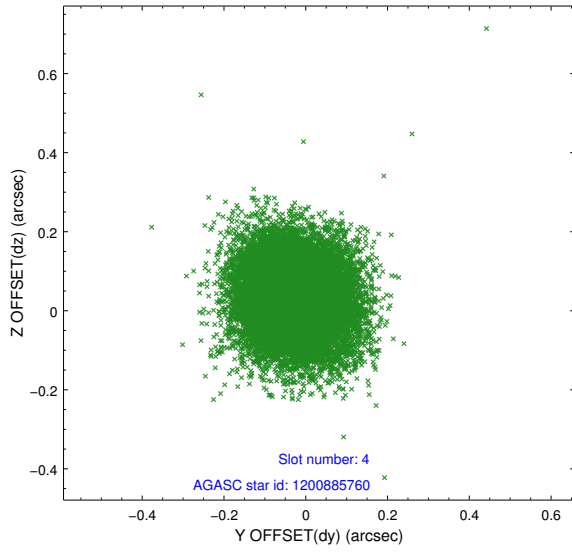
slot	status	id	mag	n_pts	med_dy	med_dz	dr1	dr2	ra	dec	mean_y	mean_z
0	FID	HRC-I-2	6.99	8338	0.114	-0.084	0.021	0.040	0.000000	0.000000	843.83	-1303.15
1	FID	HRC-I-3	7.05	8338	-0.118	0.050	0.020	0.033	0.000000	0.000000	-1197.46	1002.92
2	FID	HRC-I-4	6.98	8337	0.123	-0.054	0.008	0.014	0.000000	0.000000	1273.81	1000.74
3	GUIDE	1200884248	9.46	16654	0.006	0.031	0.115	0.187	83.880915	-68.565170	-1641.34	-1815.77
4	GUIDE	1200885760	9.46	16658	-0.030	0.036	0.111	0.182	83.723637	-68.777667	-976.71	-1384.31
5	GUIDE	1201019200	9.47	16658	-0.042	0.064	0.116	0.194	84.213591	-68.777384	-1451.20	-957.16
6	GUIDE	1201020040	8.60	16662	0.021	-0.143	0.070	0.114	85.379163	-68.879396	-2312.12	342.76
7	GUIDE	1201407840	7.96	16664	0.042	0.013	0.069	0.114	83.696303	-70.172201	2398.67	2332.55

2.4 Star Slots

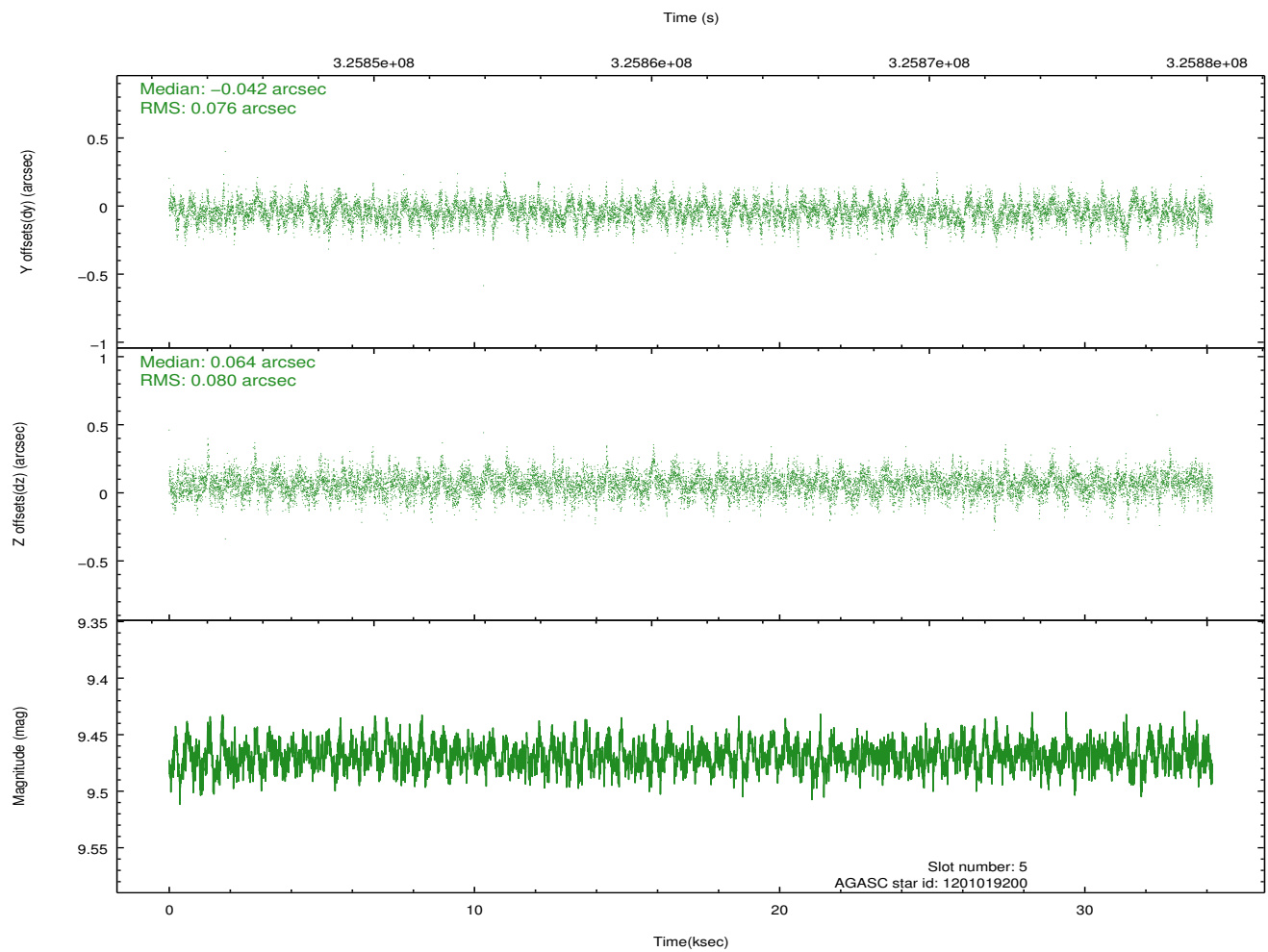
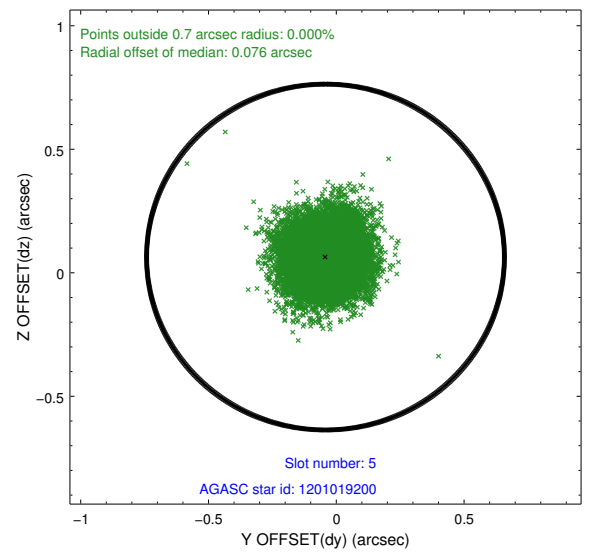
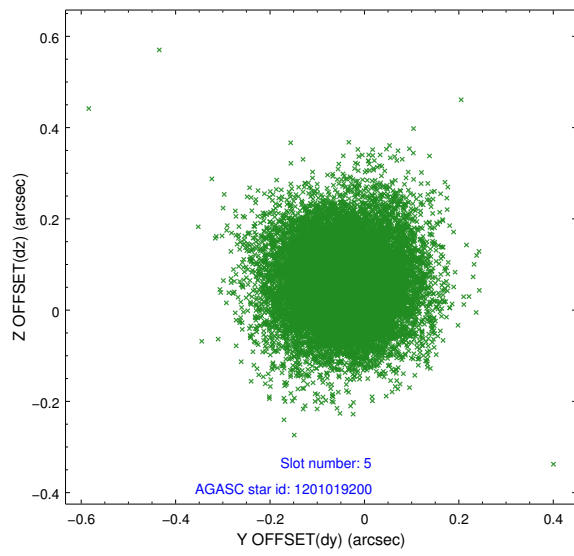
2.4.1 Slot 3



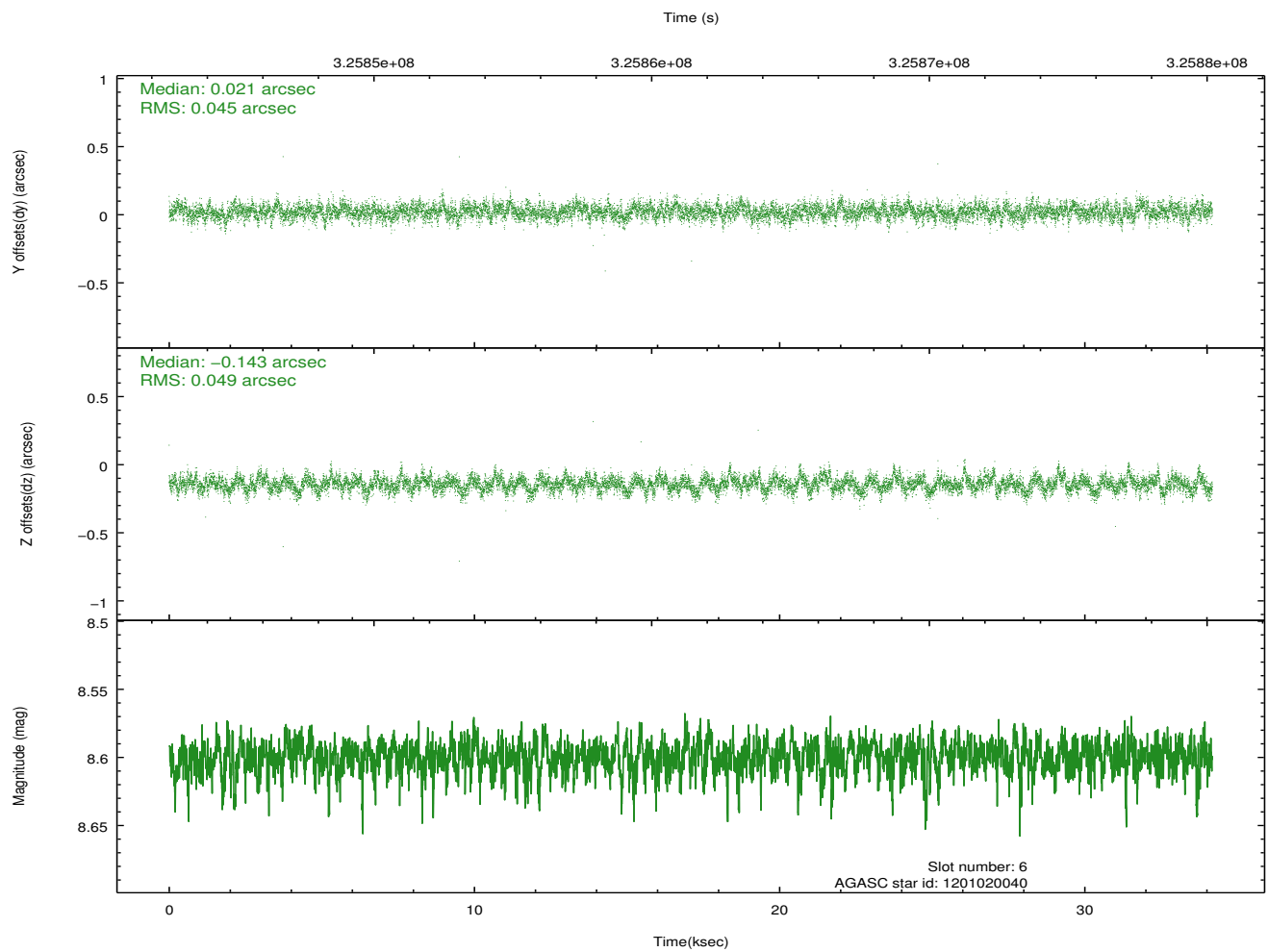
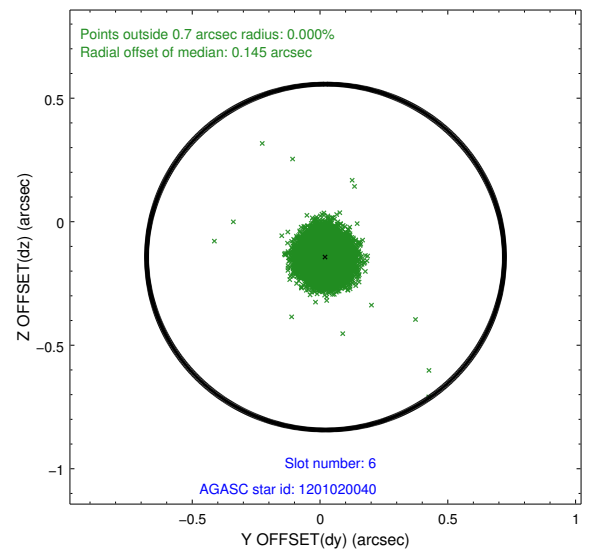
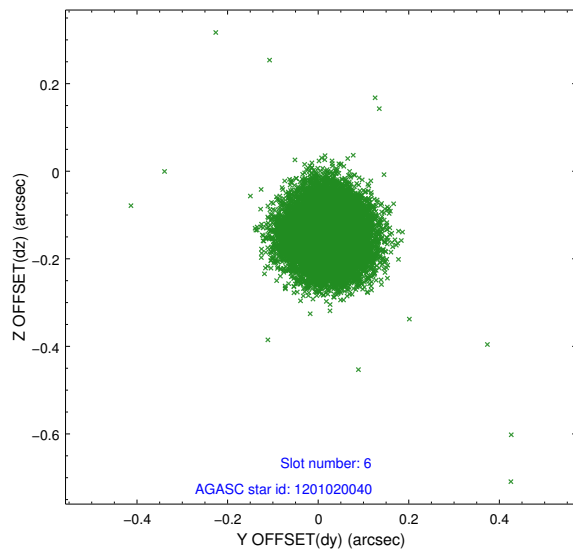
2.4.2 Slot 4



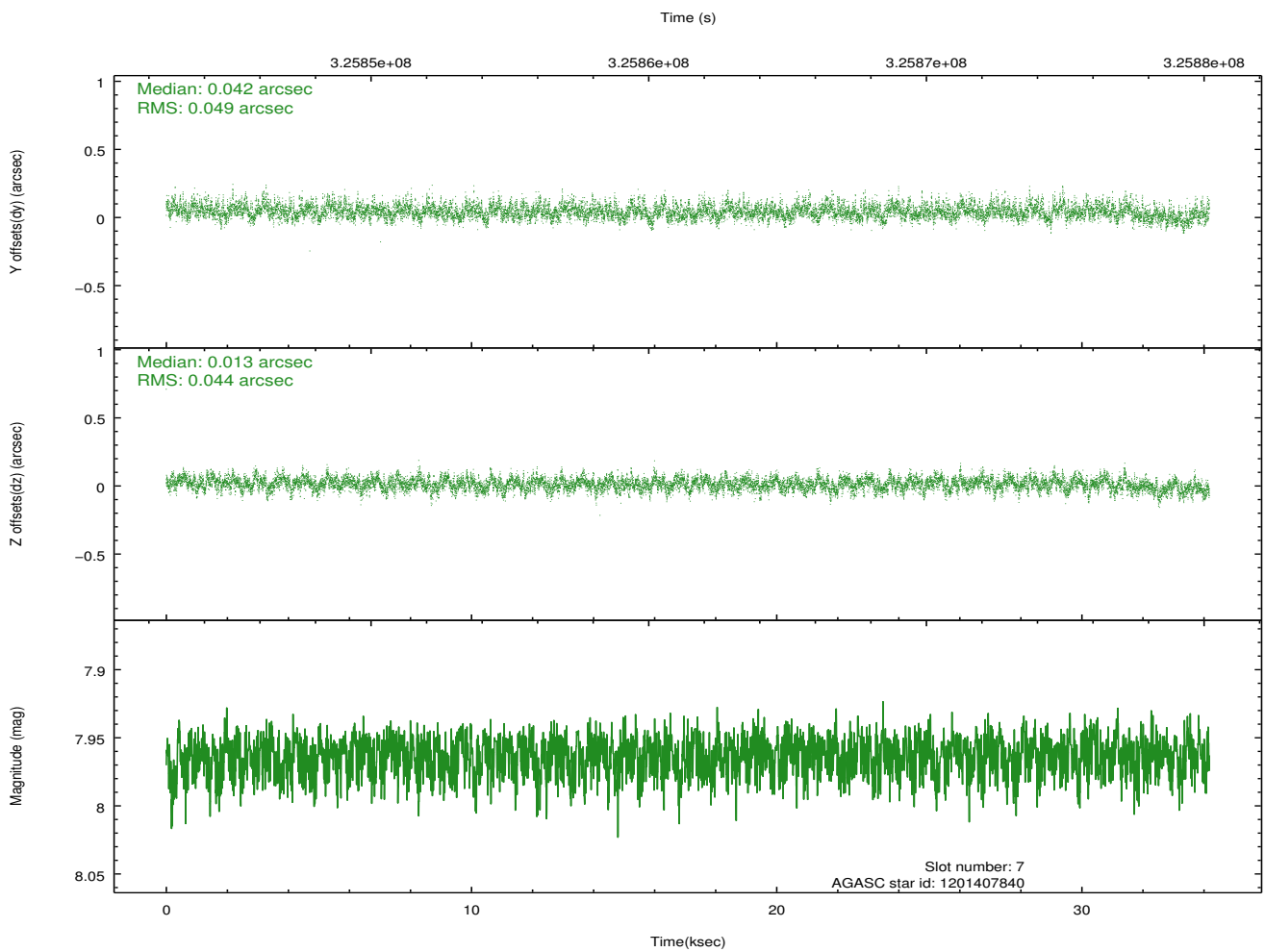
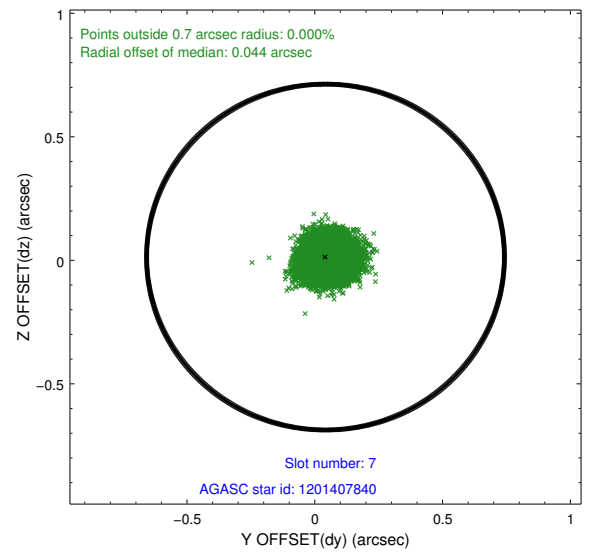
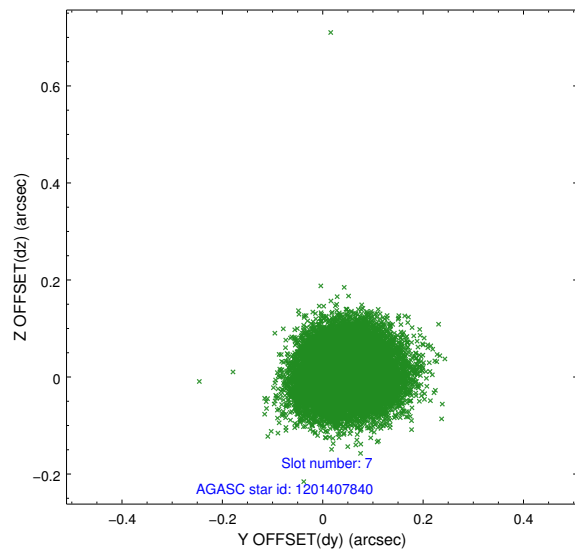
2.4.3 Slot 5



2.4.4 Slot 6

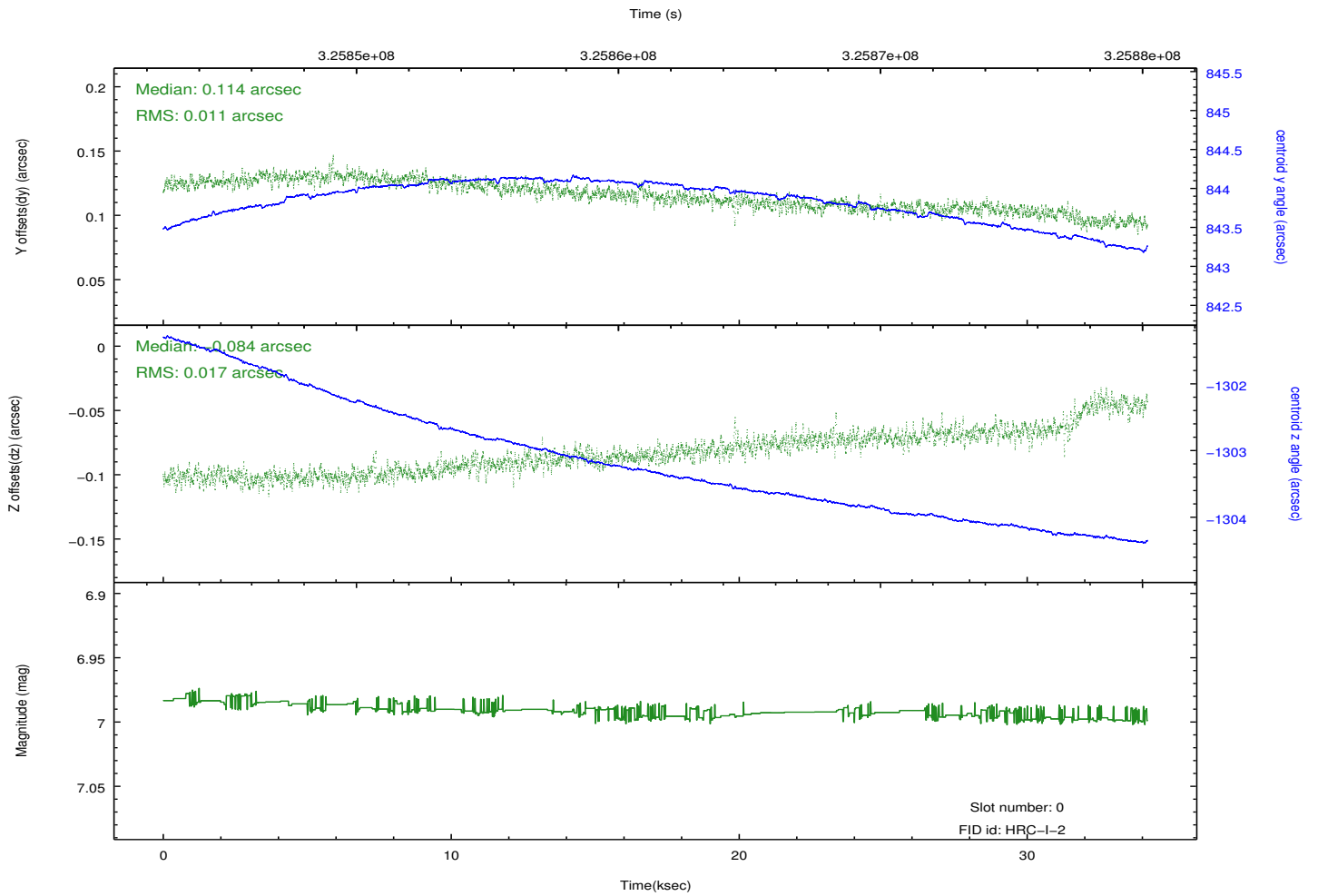
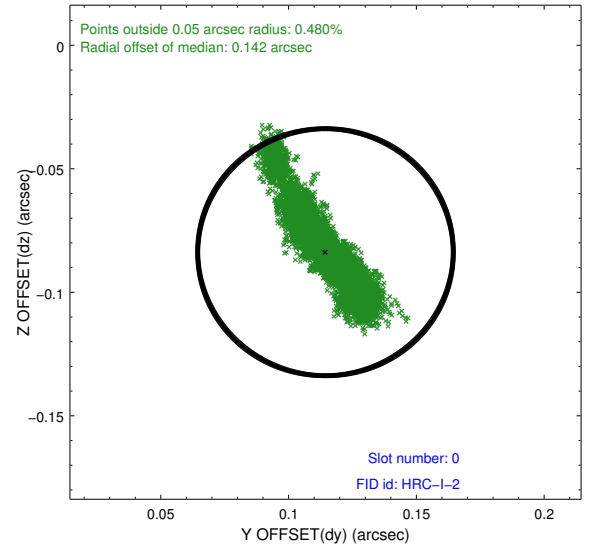
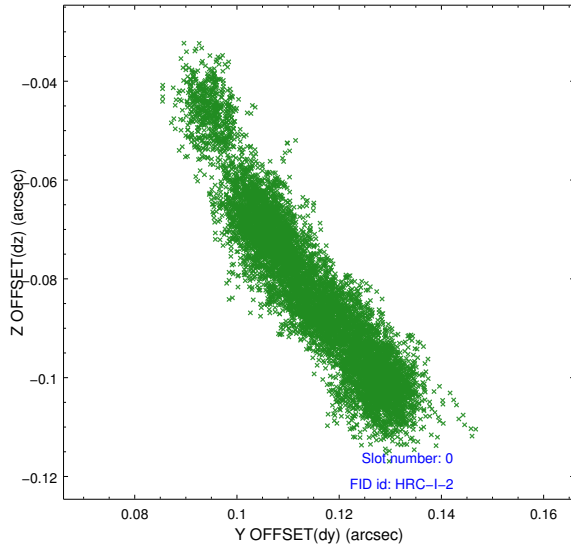


2.4.5 Slot 7

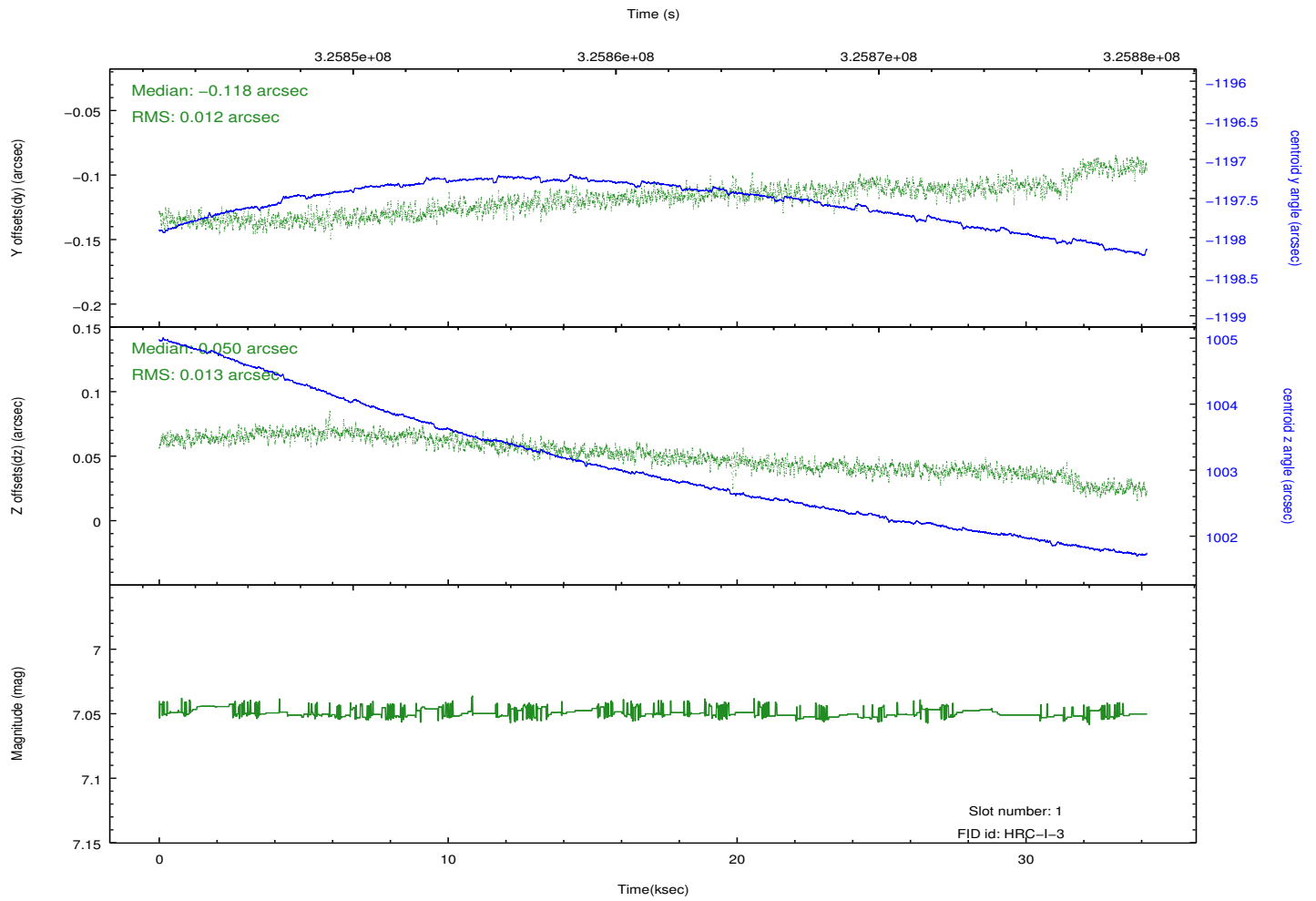
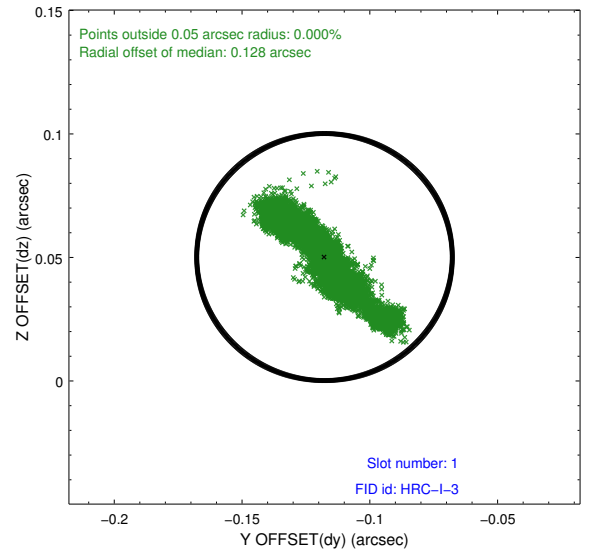
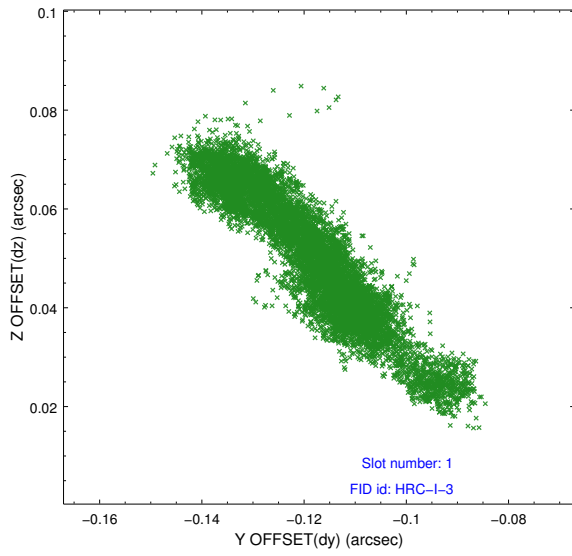


2.5 FID Slots

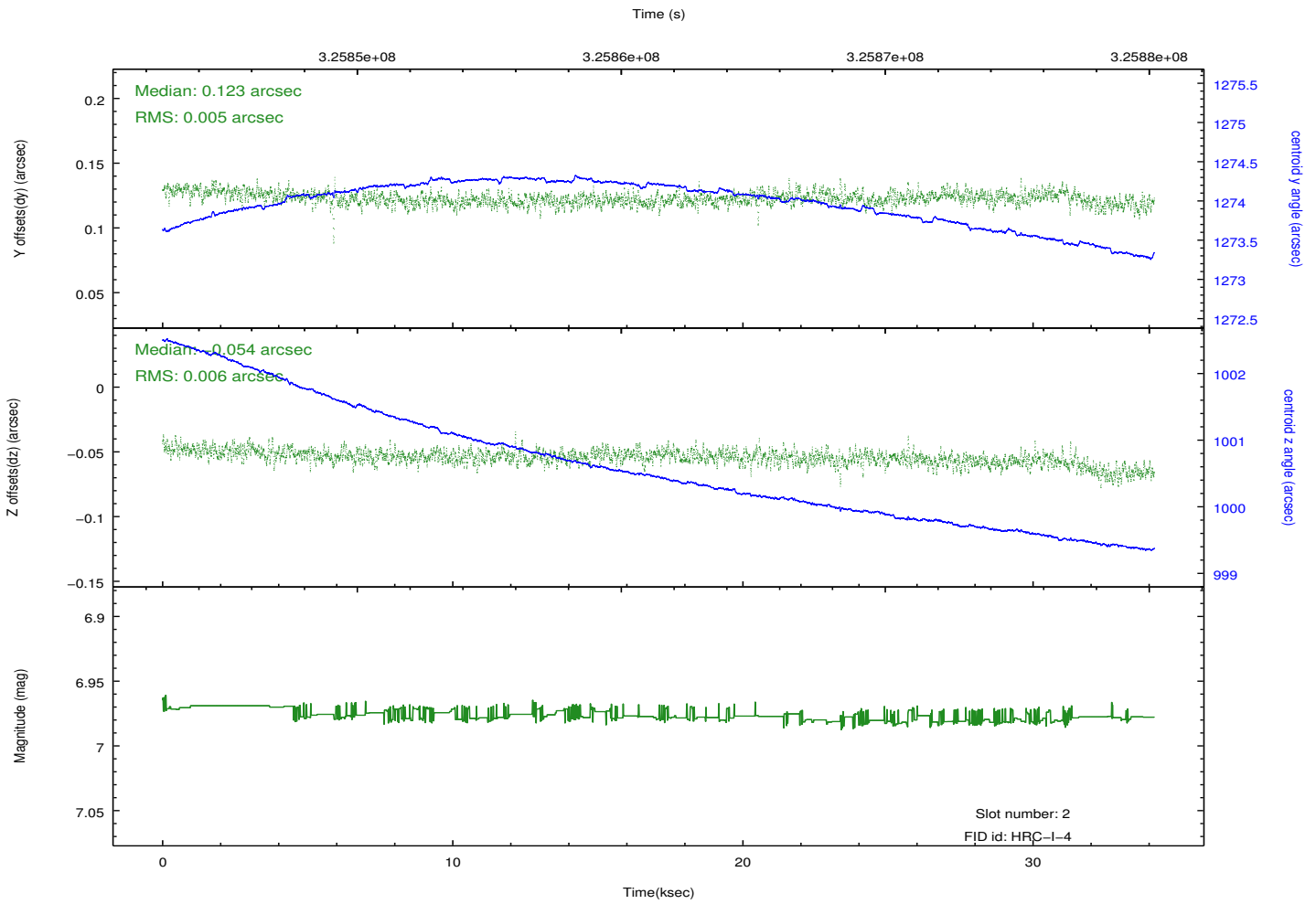
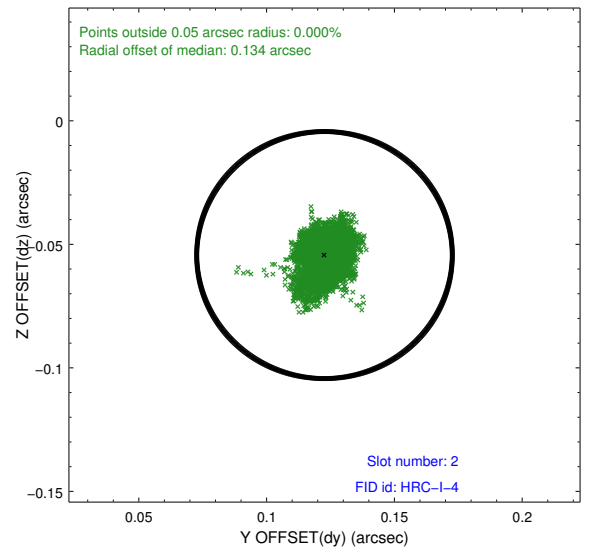
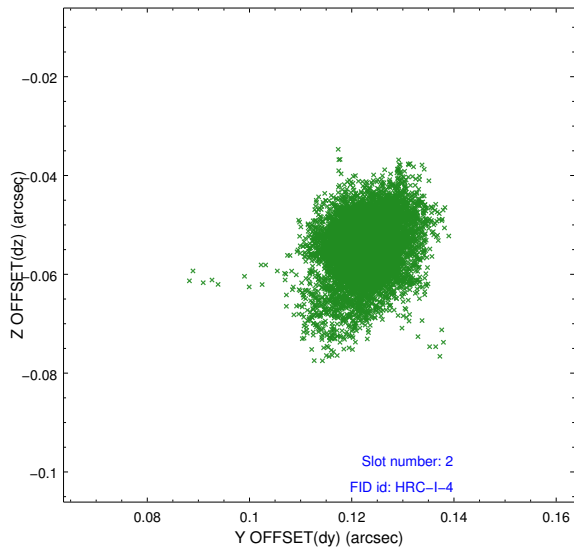
2.5.1 Slot 0



2.5.2 Slot 1



2.5.3 Slot 2



A Summary

A.1 Status

V&V Scientist	Beth Sundheim
V&V Date (YYYY-MM-DD)	2012.08.17
V&V Edition	1
V&V Disposition and Status	OK
V&V Charge Time	33.7945078

A.2 Comments