

V&V Reference Report

L2 ASCDS Version : 8.4.4

Observation 9115 - L2 Version 4
Chandra X-Ray Center

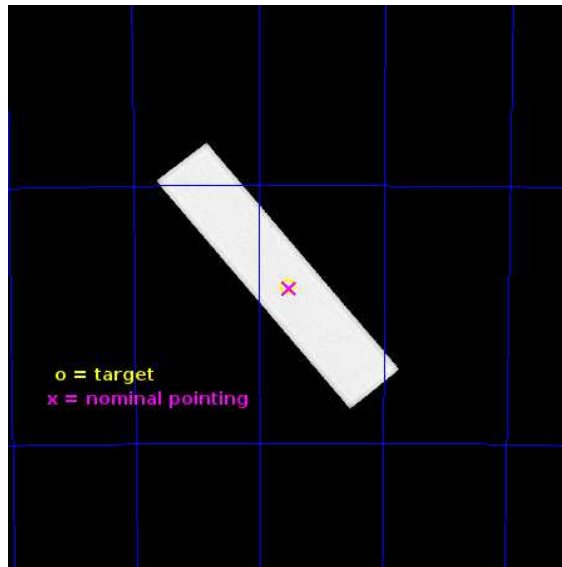
L2 Processing Date : Jun 29 2013

Contents

1	Front	2
2	OBI	3
2.1	OBI	3
2.1.1	Images	3
2.1.2	Parameters	4
2.1.3	Events	4
2.2	Compared Parameters	5
2.3	Aspect	6
2.4	Star Slots	9
2.4.1	Slot 3	9
2.4.2	Slot 4	10
2.4.3	Slot 5	11
2.4.4	Slot 6	12
2.4.5	Slot 7	13
2.5	FID Slots	14
2.5.1	Slot 0	14
2.5.2	Slot 1	15
2.5.3	Slot 2	16
A	Summary	17
A.1	Status	17
A.2	Comments	17

1 Front

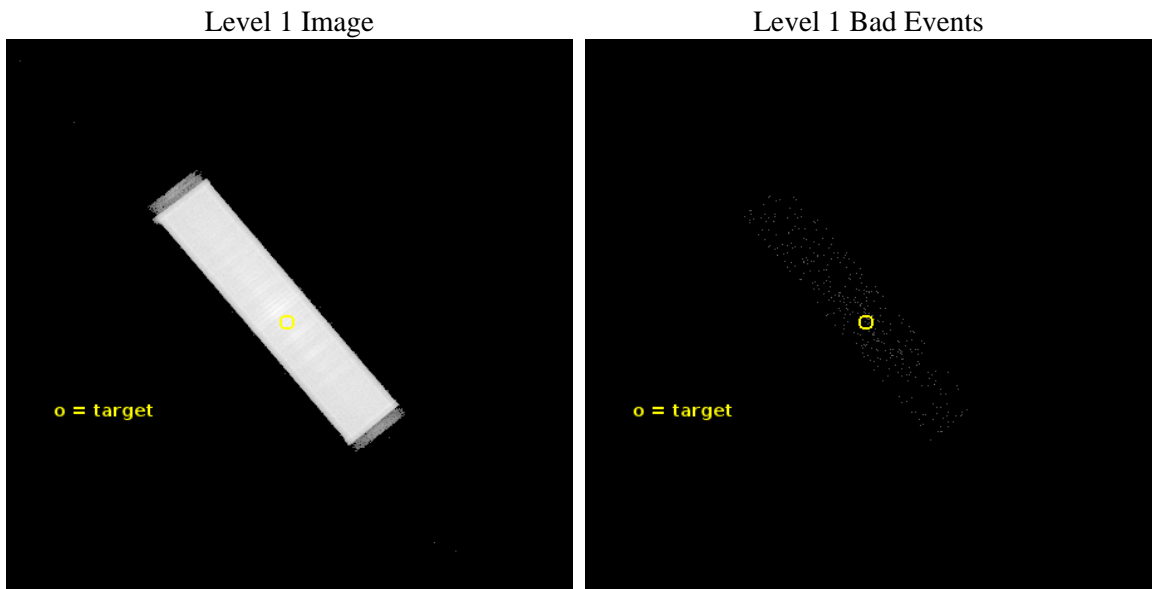
seq_num	500977	Sequence number
obs_id	9115	Observation id
title	A Search for X-ray Pulsations from Rotation-Powered Millisecond Pulsars	Proposal title
observer	Dr. Kent Wood	Principal investigator
object	PSR J1933-6211	Source name
ra_targ	293.385	Observer's specified target RA [deg]
dec_targ	-62.196333	Observer's specified target Dec [deg]
ra_nom	293.37826296226	Nominal RA [deg]
dec_nom	-62.200021147332	Nominal Dec [deg]
roll_nom	230.58768621603	Nominal Roll [deg]
revision	4	Processing version of data
ontime	20160.982224643	[s]
livetime	20056.950434425	Ontime multiplied by DTCOR
l2events	1094078	Number of level 2 events



2 OBI

2.1 OBI

2.1.1 Images



2.1.2 Parameters

obi_num	0	Obi number	sched_exp_time	20000.000000	[s] Scheduled observation exposure time
ascdsver	10	Processing system revision	ontime	20160.982224643	[s]
caldbver	4.5.7	 	l1events	1615510	Number of level 1 events
date	2013-06-29T07:18:12	Date and time of file creation			
revision	4	Processing version of data			

2.1.3 Events

Level 1 Events

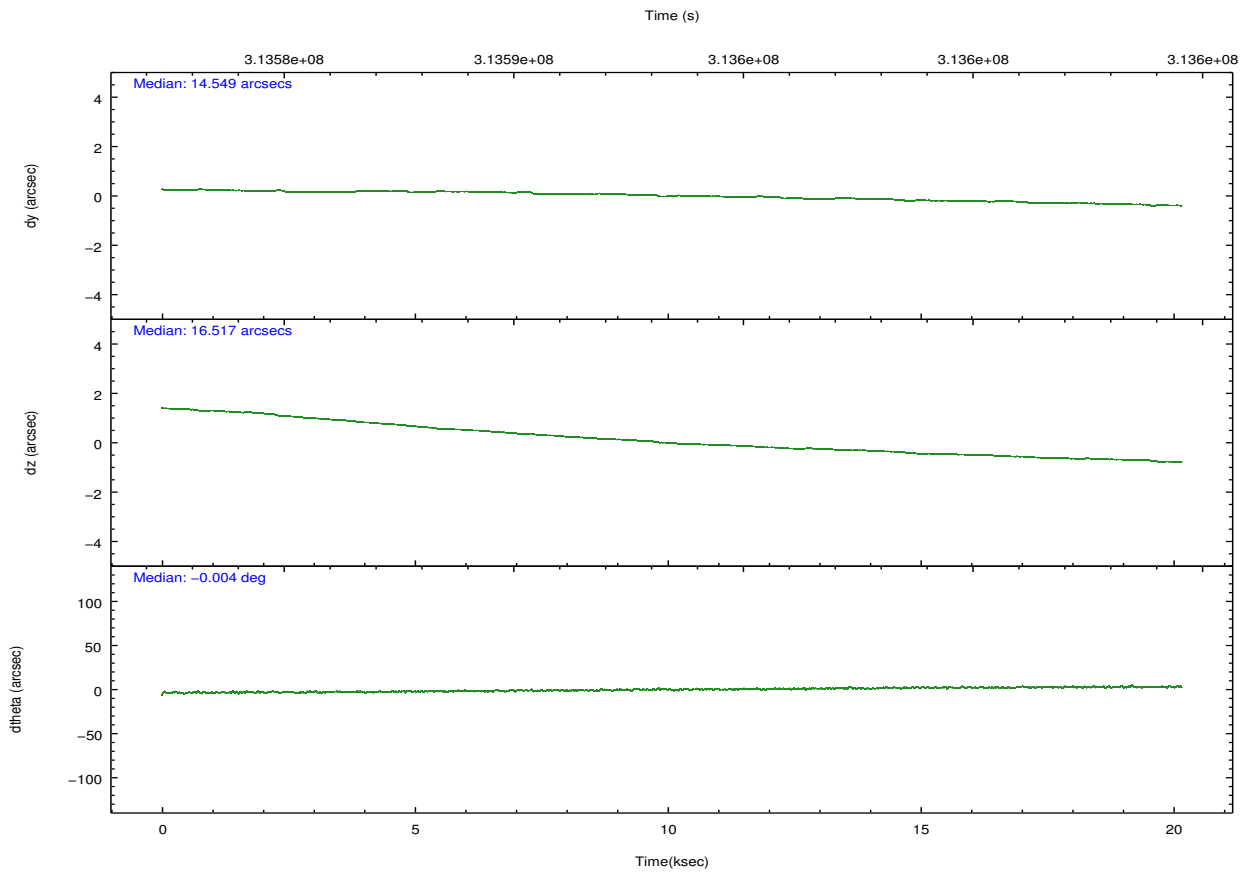
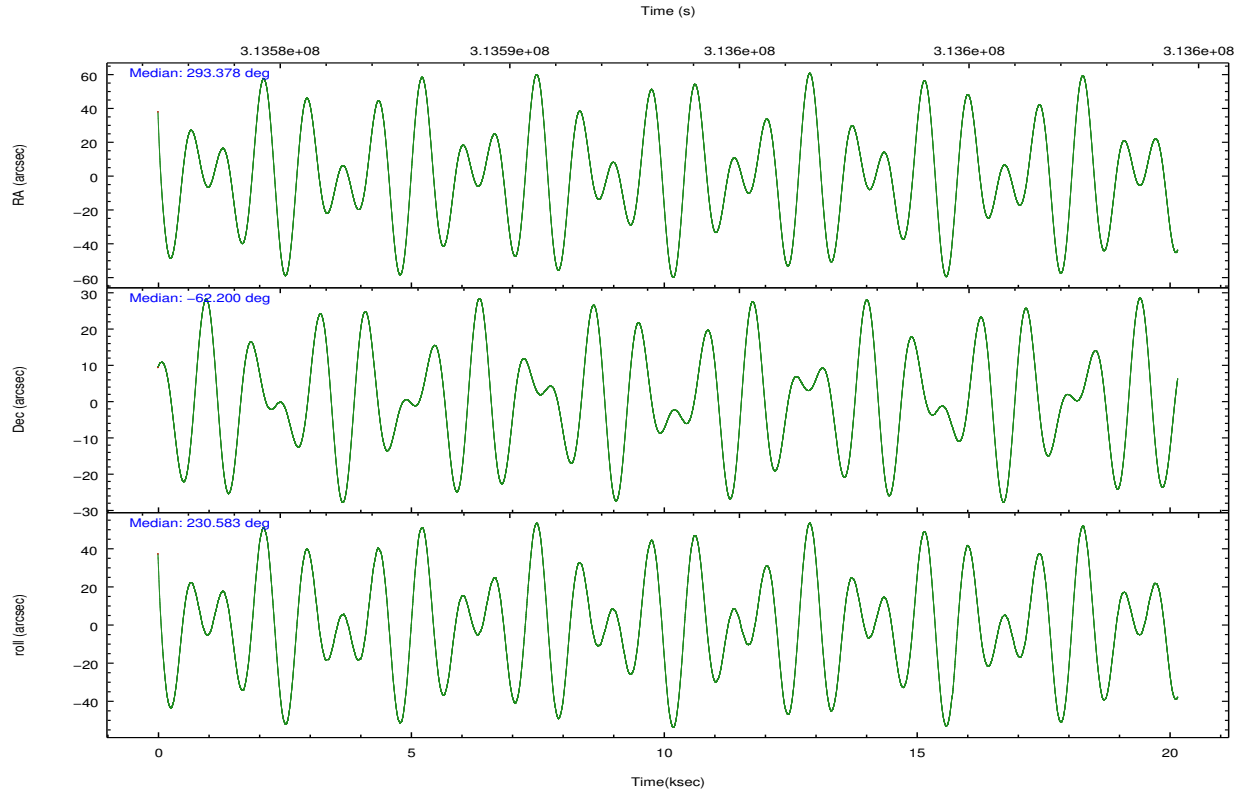
	segment 1	segment 2	segment 3
level 1 events	1841	1613662	7
rejected events	104	96901	4
rejected %	5%	6%	57%

2.2 Compared Parameters

Parameter	Planned	Actual
Instrument	HRC	HRC
Detector	HRC-S	HRC-S
Grating	NONE	NONE
Data mode	OBSERVING	OBSERVING
Observation mode	POINTING	POINTING
[deg] Pointing RA	293.385420	293.3782629622558
[deg] Pointing Dec	-62.171455	-62.2000211473319
[deg] Pointing Roll	230.526685	230.5876862160348
[mm] SIM focus pos	-1.533336	-1.526339935833849
[mm] SIM defocus	7.710433287538843e-07	0.006996703570447904
[mm] SIM translation stage pos	250.455976	250.466033080201
[mm] SIM translation stage offset	0	-0.01005468664627074
[s] Observation start time (MET)	313583510.184000	313582099.45852
Observation start date	2007-12-09T10:30:45	2007-12-09T10:08:19
[s] Observation end time (MET)	313603510.184000	313604187.69709
Observation end date	2007-12-09T16:04:05	2007-12-09T16:16:27

Parameter	Planned	Actual
Obspar format version number	7	7
Obspar file type	PREDICTED	ACTUAL
Obspar update status	NONE	UPDATED

2.3 Aspect

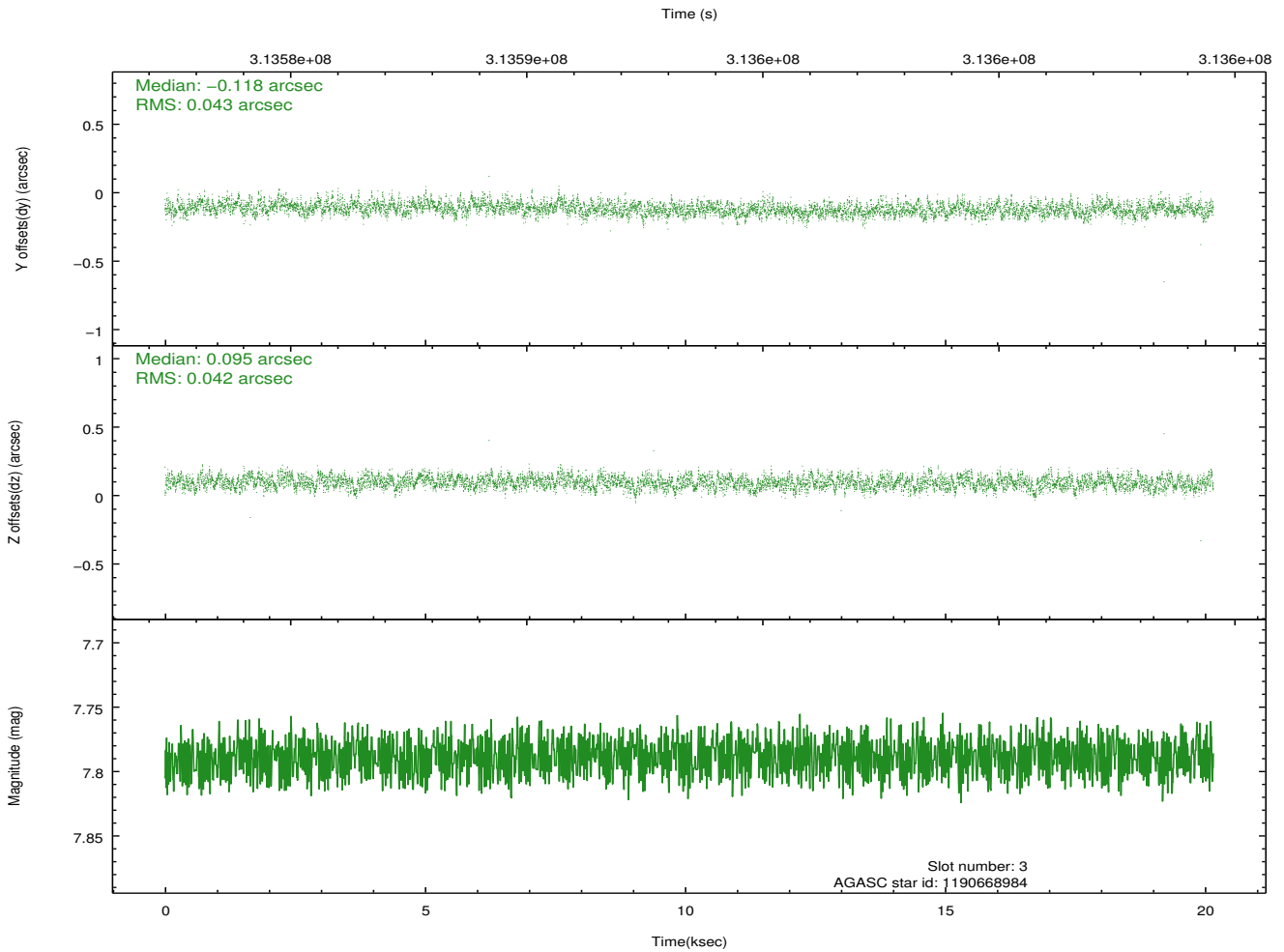
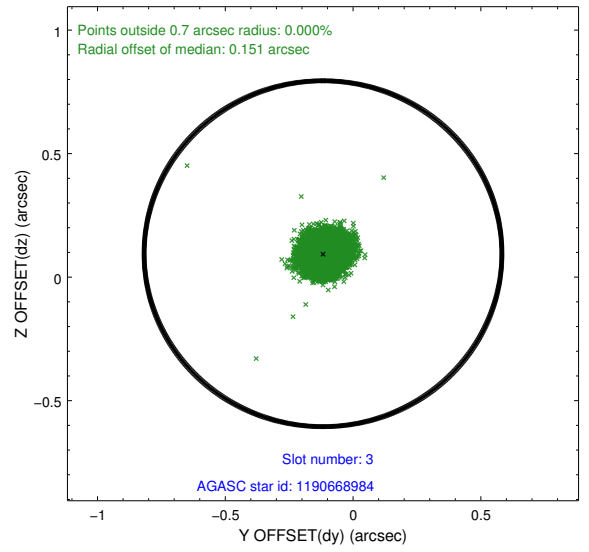
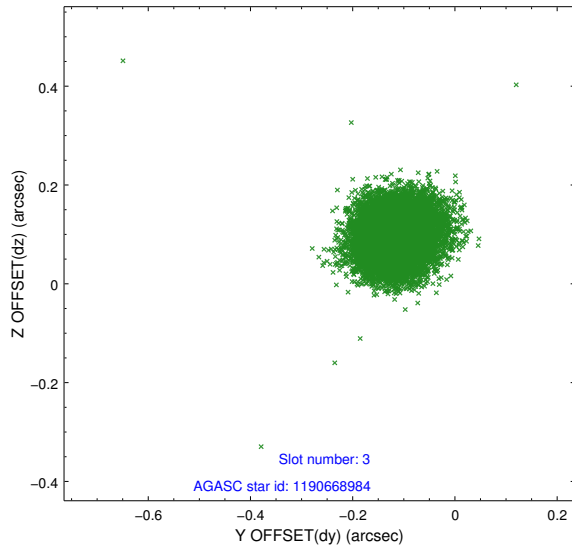


Slot Statistics

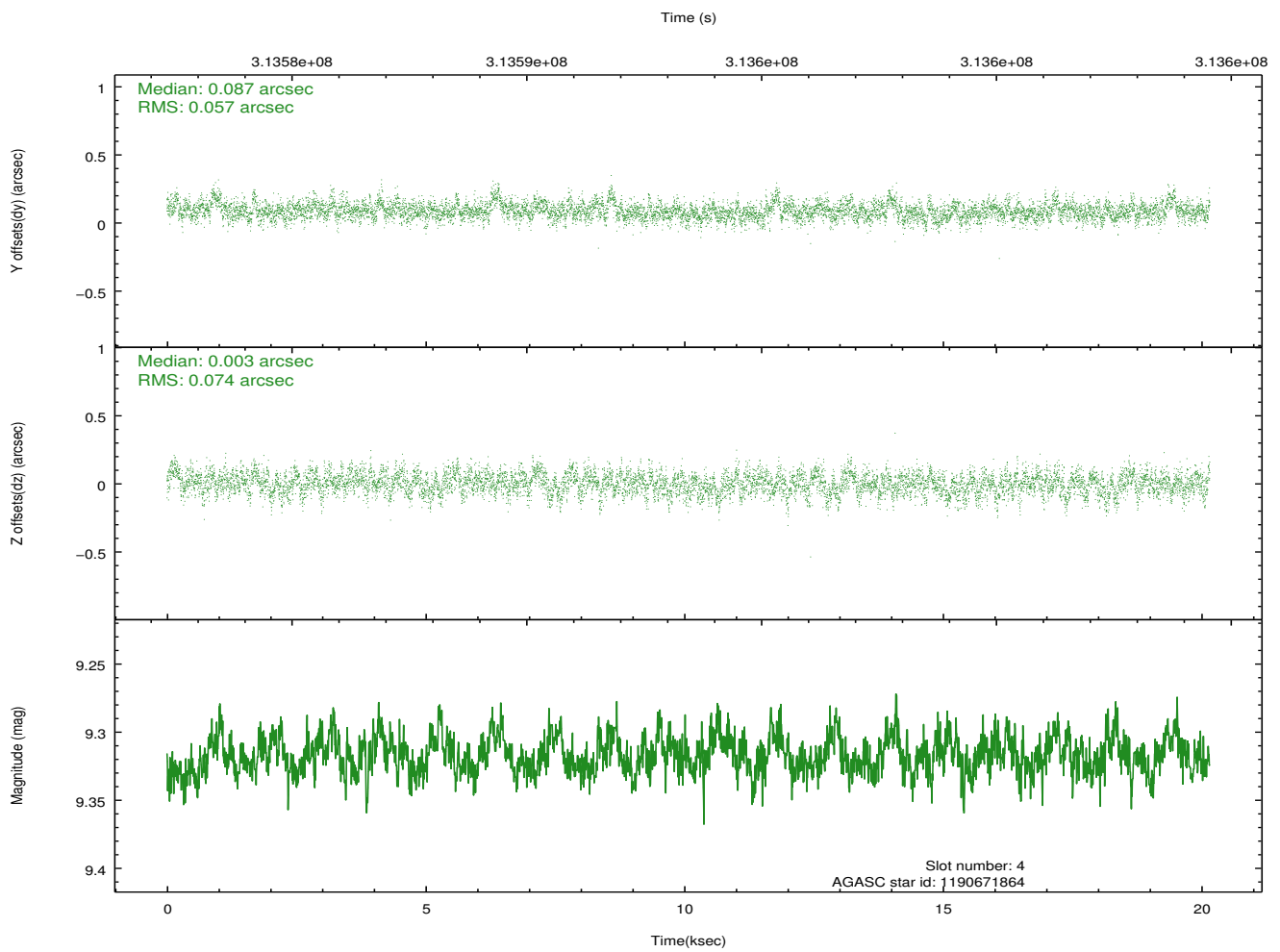
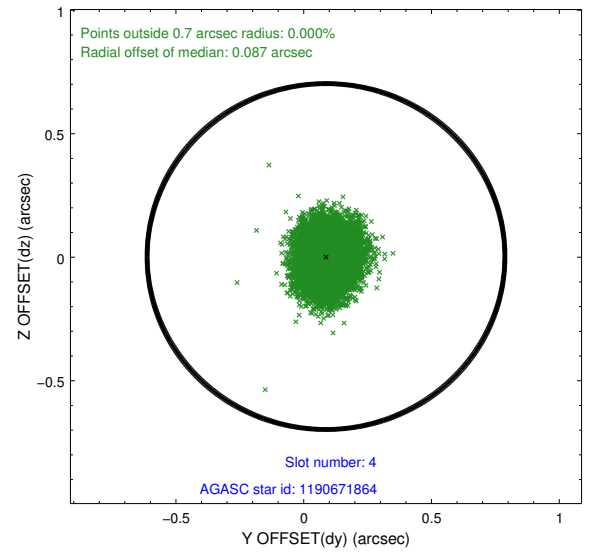
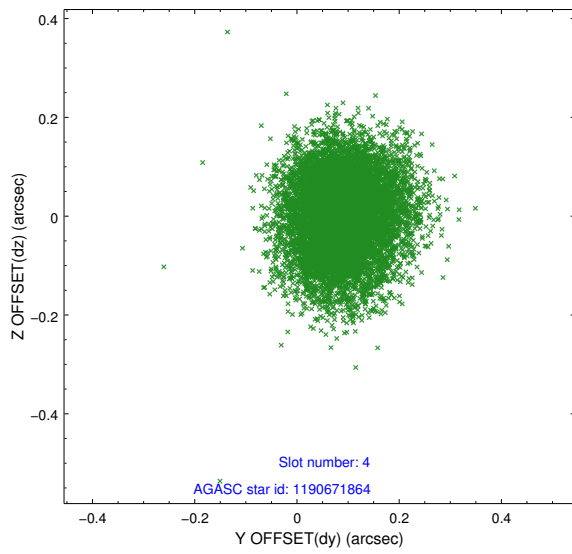
slot	status	id	mag	n_pts	med_dy	med_dz	dr1	dr2	ra	dec	mean_y	mean_z
0	FID	HRC-S-1	7.03	4917	0.076	-0.161	0.023	0.034	0.000000	0.000000	-1168.91	-465.56
1	FID	HRC-S-2	7.01	4916	0.177	-0.098	0.010	0.016	0.000000	0.000000	1230.61	-458.21
2	FID	HRC-S-3	7.03	4918	0.136	-0.044	0.028	0.039	0.000000	0.000000	-1171.32	563.99
3	GUIDE	1190668984	7.79	9830	-0.118	0.095	0.064	0.101	293.942319	-61.630924	-2104.55	-498.79
4	GUIDE	1190671864	9.32	9829	0.087	0.003	0.100	0.164	293.171008	-61.808360	-776.73	-1112.04
5	GUIDE	1191188728	8.06	9827	-0.185	-0.123	0.068	0.109	294.124549	-62.586675	380.14	1900.44
6	GUIDE	1191189448	8.48	9833	0.058	-0.057	0.084	0.138	291.658705	-62.332212	2311.75	-1835.05
7	GUIDE	1191183584	7.80	9832	0.149	0.085	0.074	0.126	293.447636	-63.058306	2400.52	2108.62

2.4 Star Slots

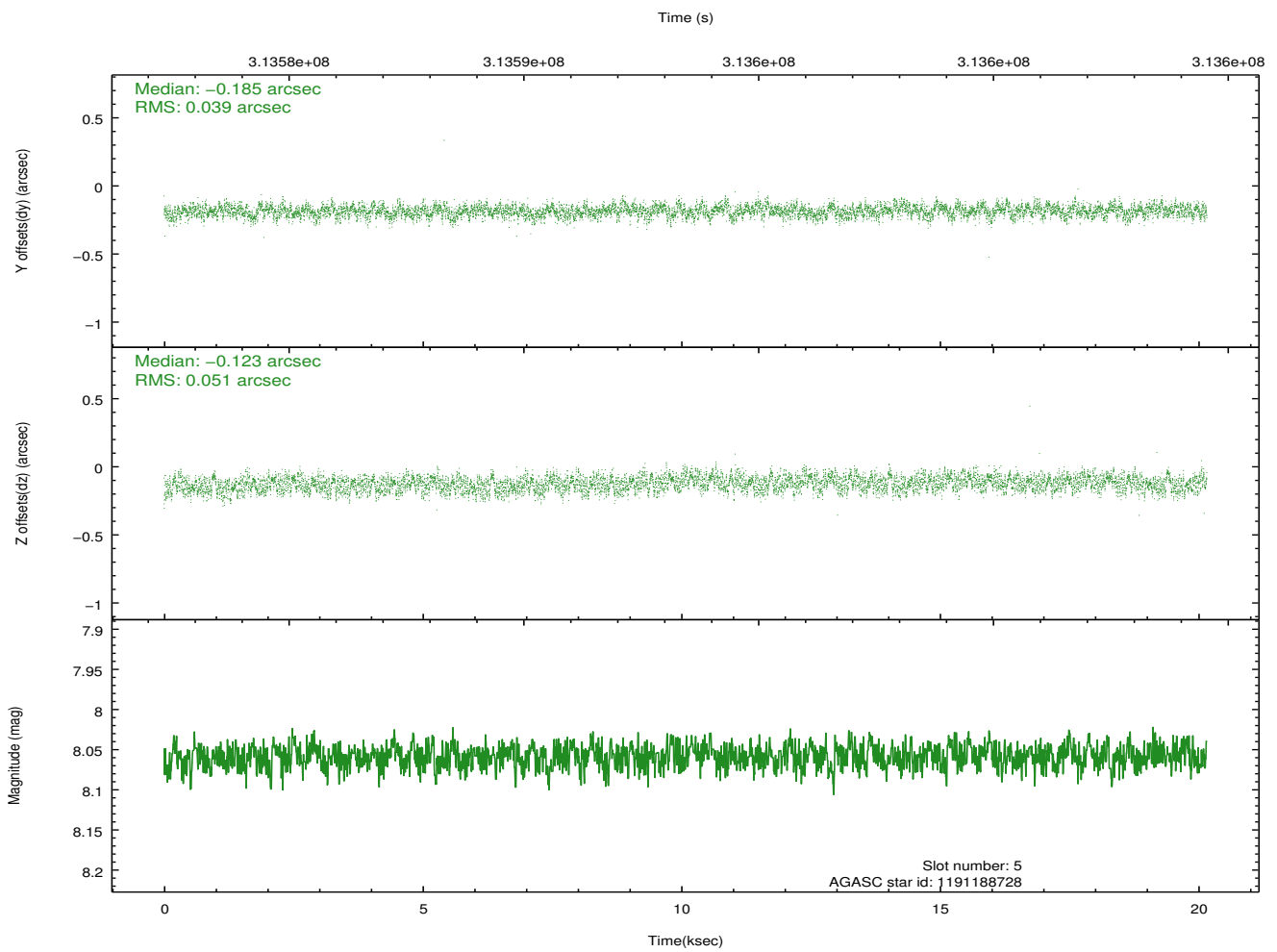
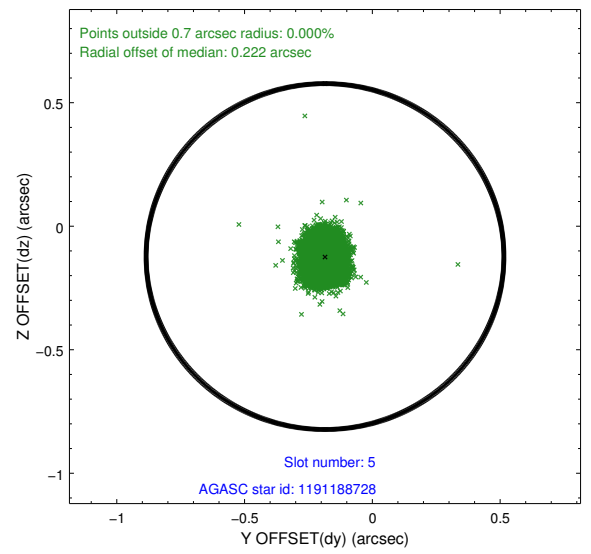
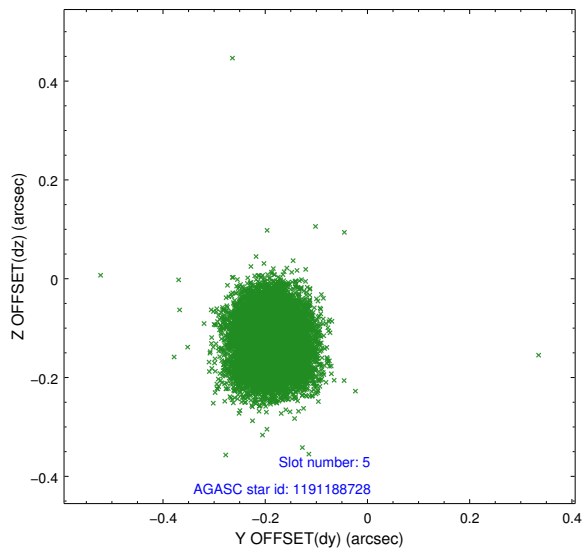
2.4.1 Slot 3



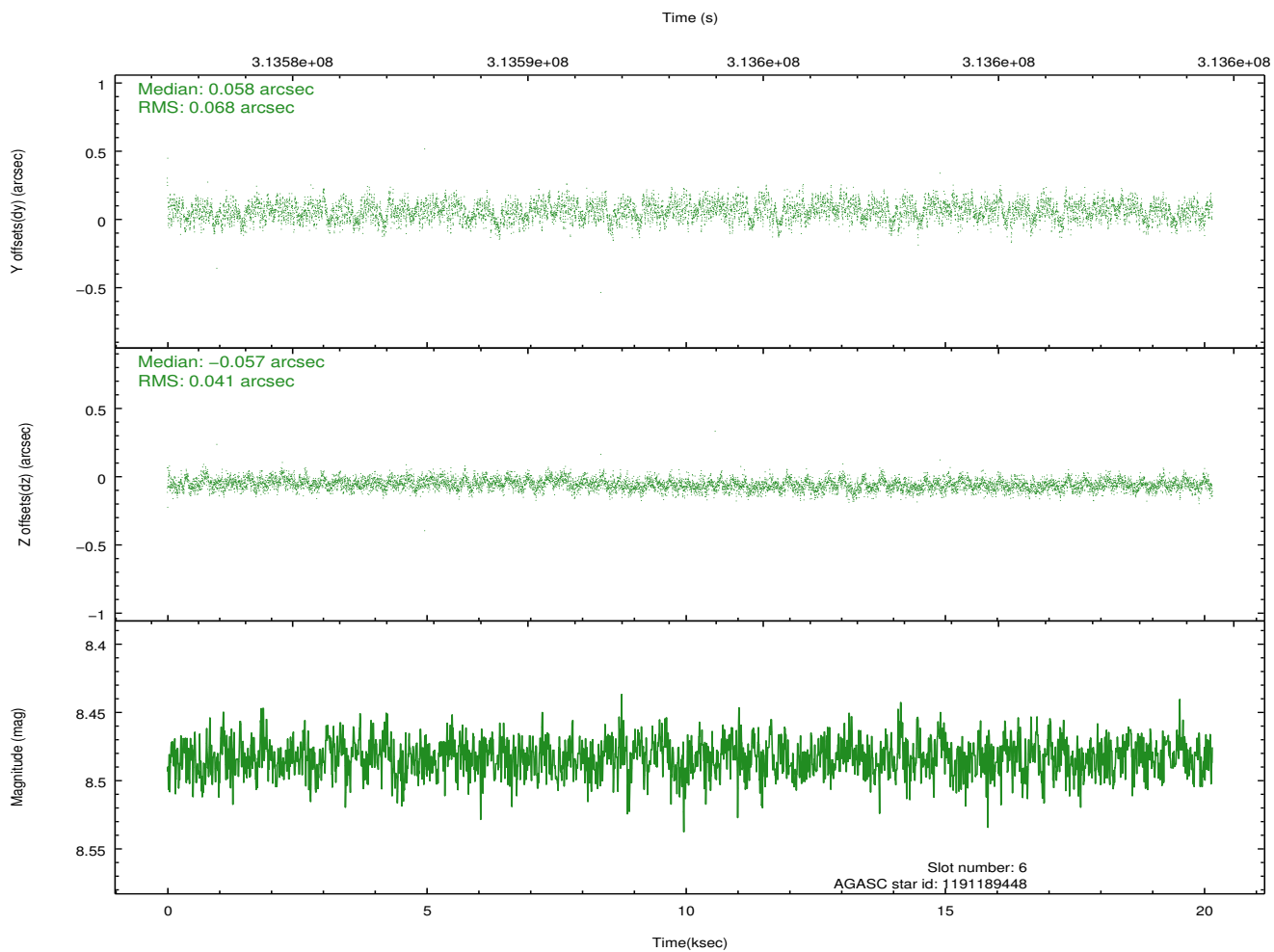
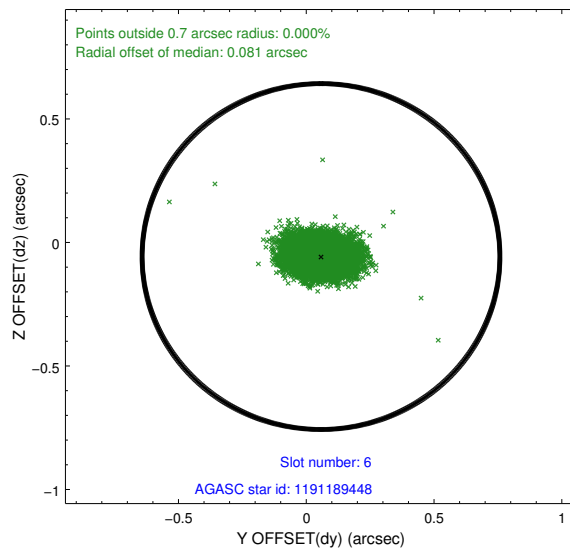
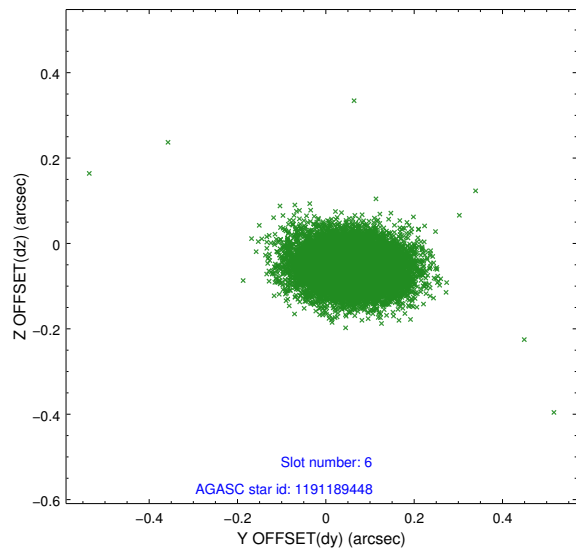
2.4.2 Slot 4



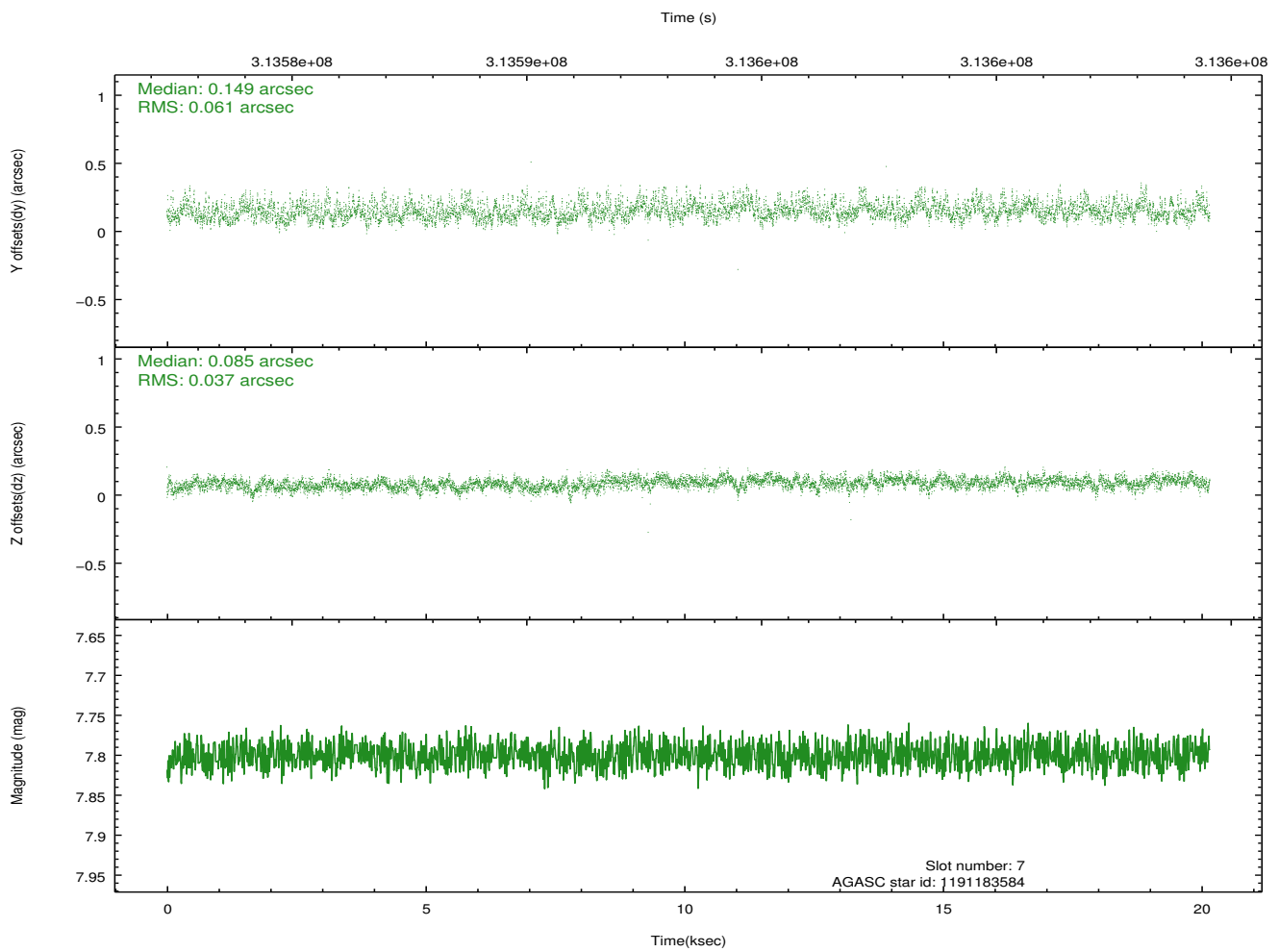
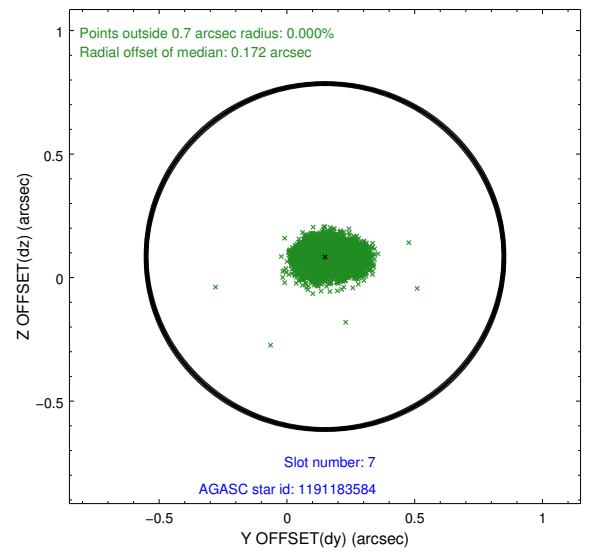
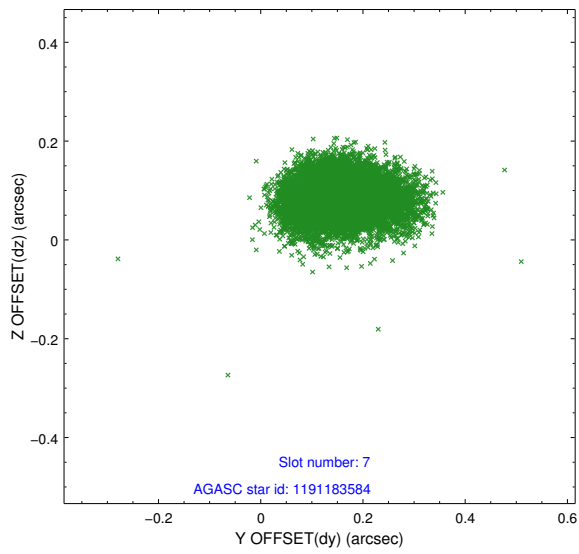
2.4.3 Slot 5



2.4.4 Slot 6

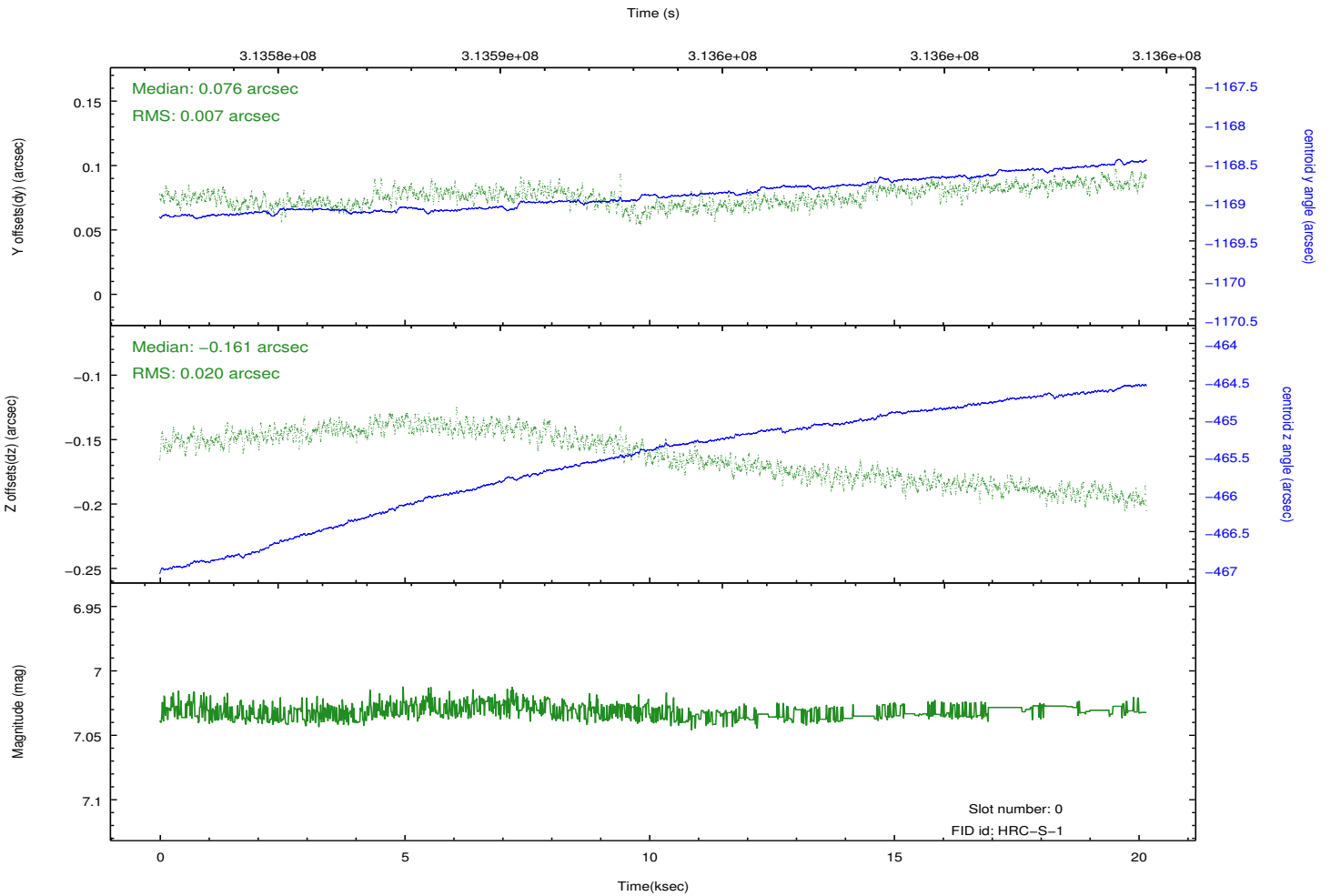
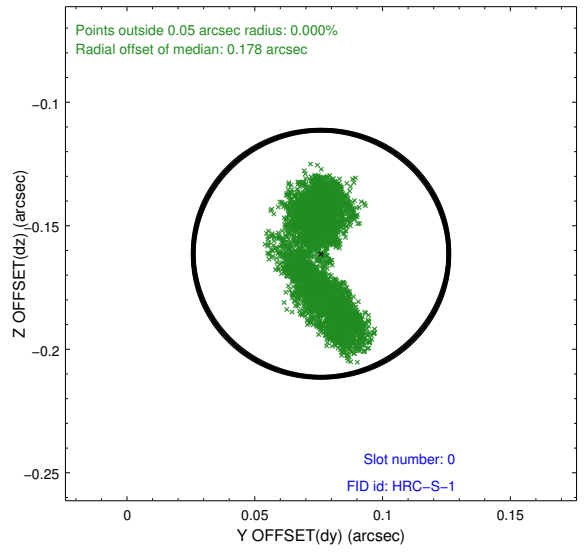
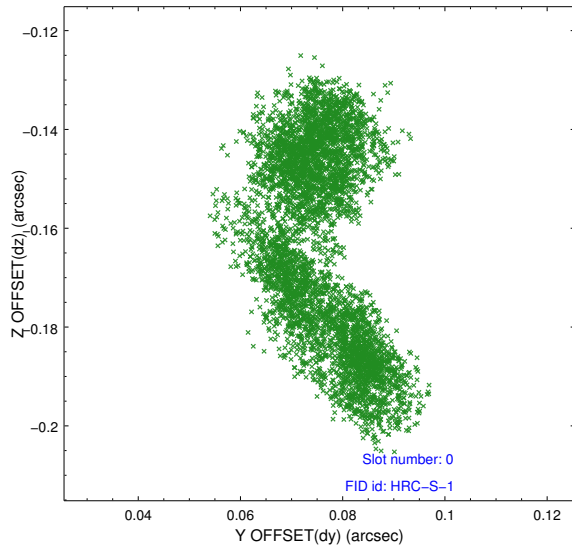


2.4.5 Slot 7

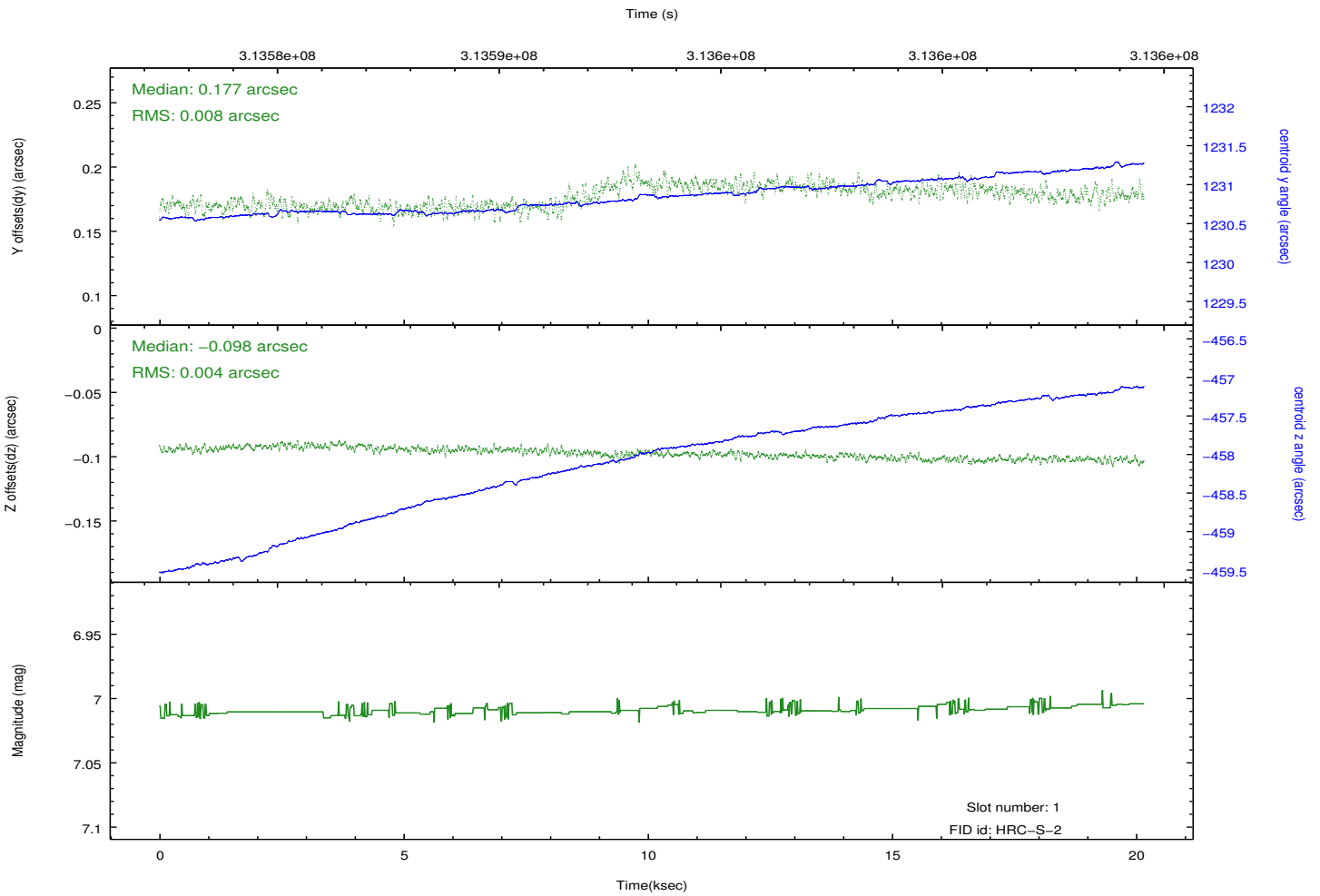
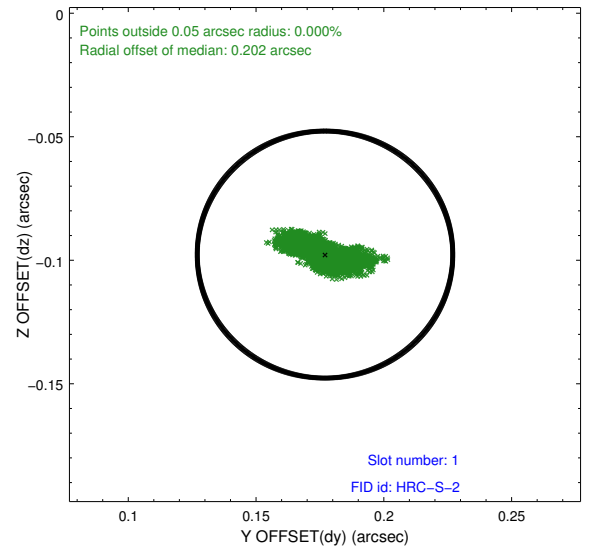
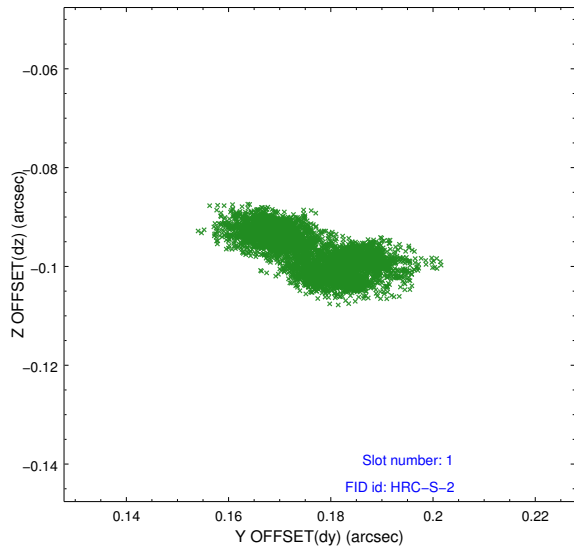


2.5 FID Slots

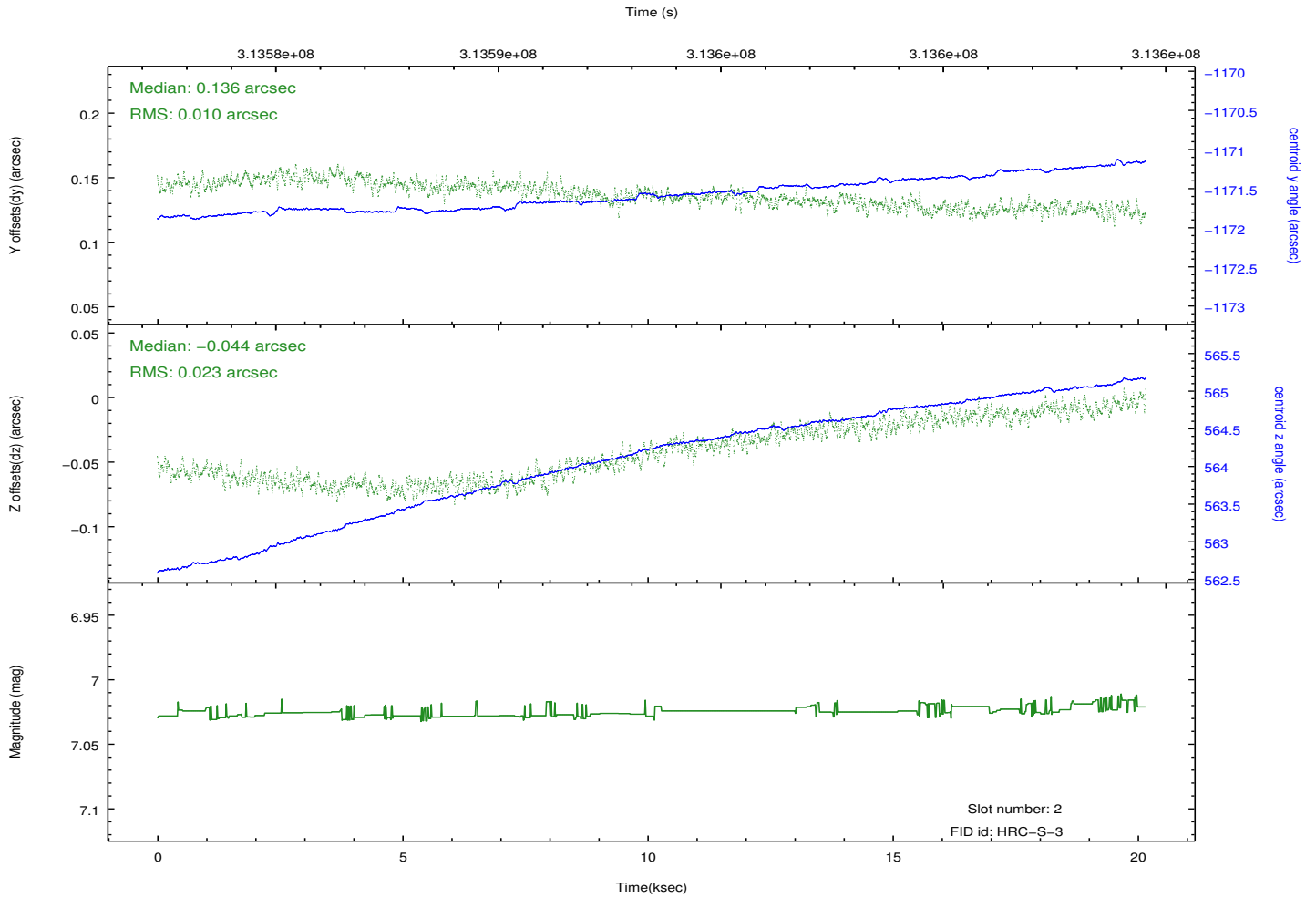
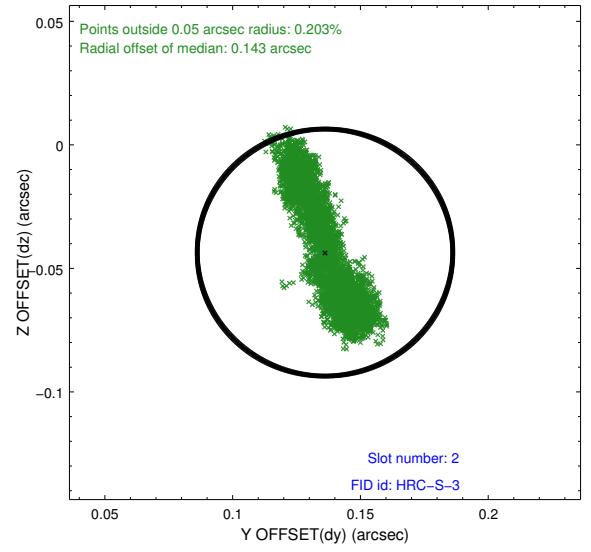
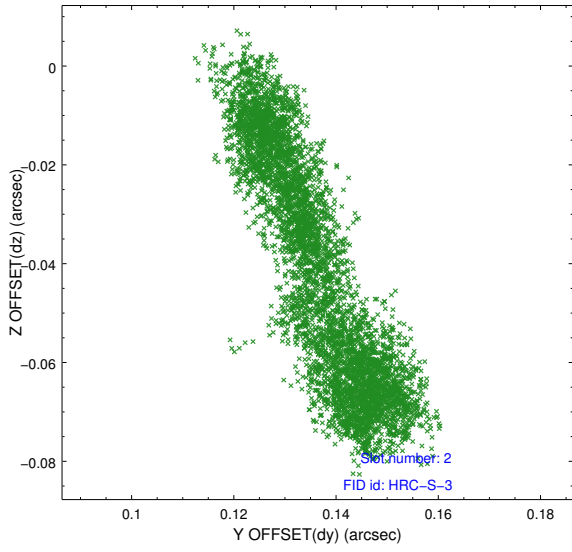
2.5.1 Slot 0



2.5.2 Slot 1



2.5.3 Slot 2



A Summary

A.1 Status

V&V Scientist	Beth Sundheim
V&V Date (YYYY-MM-DD)	2013.07.01
V&V Edition	1
V&V Disposition and Status	OK
V&V Charge Time	20.1609822

A.2 Comments